



DE VALK
YACHT BROKERS



VAN DER VALK 24M



DE VALK
YACHT BROKERS

VAN DER VALK 24M

BROKER'S COMMENTS

Discover the impressive Van der Valk 24M. This beautiful yacht has recently undergone extensive upgrades, with more than €300,000 invested. She is now equipped with brand-new chart plotters and modern navigation equipment at both helm stations, new air conditioning, new interior flooring, and a new bathtub for extra comfort on board. In addition, the seams of the teak deck are currently being completely renewed, enhancing both the appearance and the durability to an even higher level. The yacht is available for viewing 7 days a week in our sales marina.

Mark Hesselmans

SPECIFICATIONS

Dimensions	23.74 x 5.40 x 1.50 (m)	Builder	Van der Valk Shipyard
Built	1992	Cabins	4
Material	Steel	Berths	10
Engine(s)	2 x MAN D2840LYE diesel	Hp/Kw	2 x 820.00 (hp), 603.52 (kw)
Asking price	€ 649.950 (VAT Paid)	Lying	at sales office

CONTACT

Sales office	De Valk Loosdrecht B.V.	Telephone	+31 (0)35 582 90 30
Address	't Breukeleveense Meentje 6 1231LM Loosdrecht / Wijdmeren NL	E-mail	loosdrecht@devalk.nl

DISCLAIMER

These particulars are given in good faith as supplied but cannot be guaranteed.



VAN DER VALK 24M

GENERAL

Model	VAN DER VALK 24M
Type	motor yacht
LOA (m)	23,74
Beam (m)	5,40
Draft (m)	1,50
Headroom (m)	1,95
Year built	1992
Builder	Van der Valk Shipyard
Country	The Netherlands
Designer	Jan des Bouvrie
Displacement (t)	50
Hull material	steel
Hull colour	white
Hull shape	hard chine
Superstructure material	steel
Rubbing strake	stainless steel
Deck material	steel
Deck finish	teak
Cockpit deck finish	teak
Window frame	aluminium
Window material	tempered glass
Deckhatch	yes
Portholes	stainless steel 7x each side
Flybridge	yes
Flybridge cover	yes
Flybridge cockpit cover	yes
Flybridge suncover	yes
Radar arch	non collapsible
Mast can be lowered	manual
Fuel tank (litre)	steel 3000



VAN DER VALK 24M

Fuel tank 2 (litre)	steel 3000
Level indicator (fuel tank)	yes
Fuel daytank (litre)	steel 800
Level indicator (daytank)	yes
Freshwater tank (litre)	3200
Level indicator (freshwater)	VDO
Wheel steering	powersteer
Inside helm position	yes
Outside helm position	powersteer Docking station on starboard side
Flybridge helm position	powersteer

ACCOMMODATION

Cabins	4
Berths	10
Crew cabin	yes
Crew berths	yes
Interior	Jan des Bouvrie
Floor	Synthetic teak (2024)
Aft deck	yes
Deck saloon	yes
Pilot house/deck saloon	yes
Saloon	yes
Headroom saloon (m)	1,95
Heating	central heating
Air-conditioning	2024
Aft Cabin	yes
Dinette	yes
Sliding door to cockpit	yes
Galley	yes
Countertop	corian
Sink	stainless steel



Cooker	ceramic Smeg 4 pits
Extractor	yes
Microwave/oven combi	Smeg
Fridge	Siemens
Freezer	yes
Hot water system	220V + engine
Water pressure system	electrical
Owners cabin	double bed
Bed length (m)	2,00
Wardrobe	hanging/drawers/shelves
Bathroom	en suite
Toilet	en suite
Toilet system	electric
Wash basin	in the bathroom
Shower	en suite
Bath tub	en suite 2024
Guest cabin 1	bunk bed
Bed length (m)	1,95
Wardrobe	shelves
Wash basin	in the cabin
Guest cabin 2	twin single
Bed length (m)	2,00
Wardrobe	hanging/drawers/shelves
Bathroom	en suite
Toilet	en suite
Toilet system	electric
Wash basin	in the bathroom
Shower	en suite
Guest cabin 3	double bed
Bed length (m)	2,00
Wardrobe	hanging/drawers/shelves
Bathroom	yes



Toilet	shared
Toilet system	electric
Wash basin	in the bathroom
Shower	shared
Crew cabin(s)	1
Bathroom (crew)	yes
Toilet (crew)	yes
Toilet system	electric
Wash basin	in the bathroom
Shower (crew)	yes
Washing machine/dryer combi	Indesit
Sky lounge	yes
Flybridge	yes
Wet bar	yes

MACHINERY

No of engines	2
Make	MAN
Type	D2840LYE
HP	820
kW	603.52
Fuel	diesel
Maximum speed (kn)	22
Cruising speed (kn)	17
Engine cooling system	freshwater heat exchanger
Drive	shaft
Shaft seal	yes
Engine controls	electrical & bowden cable
Gearbox	hydraulic ZF-Hurthz
Bowthruster	hydraulic
Sternthruster	electric



VAN DER VALK 24M

Exhaust	watercooled
Propeller type	fixed
Propeller shaft material	stainless steel
Shaft lubrication	water
Electric bilge pump	yes
Electrical installation	12V/24V/230V
Generator	silent separator Mastervolt 16Kw
Generator 2	silent separator Whisper power 16Kw
Batteries	yes
Start battery	yes
Service battery	yes
Generator battery	yes
Bowthruster battery	yes
Sternthruster battery	yes
Battery monitor	yes
Battery charger	Mastervolt 24V/75A Mastervolt 24V/50A Mastervolt 24V/30A
Inverter	Mastervolt 24V/2500W
Shorepower	with cable

NAVIGATION

Compass	Sestrel
Electric compass	Raymarine (2024)
Depth sounder/log	2x Raymarine (2024)
VHF	Raymarine RayMic60/70 (2024)
Autopilot	Raymarine (2024)
Rudder angle indicator	Raymarine (2024)
Radar/GPS/plotter	Raymarine Axiom Pro 16S (2024)
AIS transceiver	Simrad V5035 Class A
Navigation lights	yes

EQUIPMENT



VAN DER VALK 24M

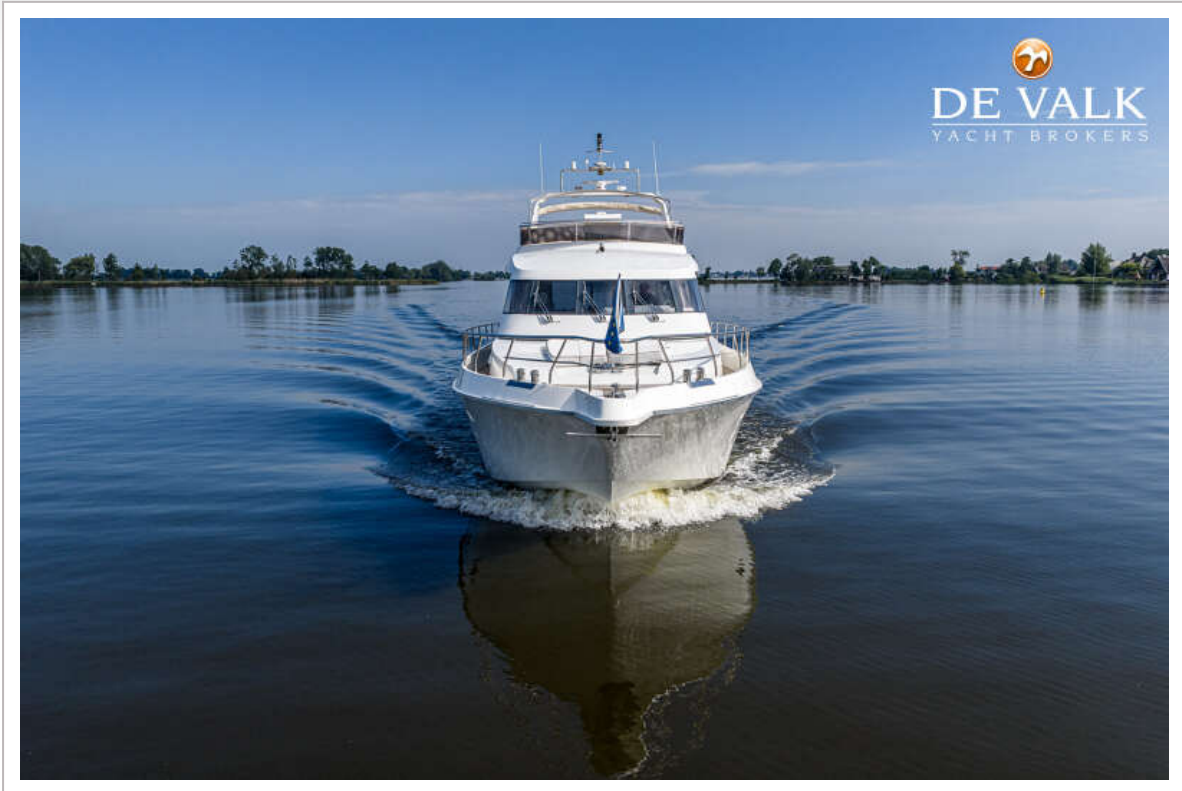
Fixed windscreen	yes
Cockpit cover	yes
Bimini	yes
Sun awning	yes
Cockpit cushions	yes
Cockpit table	yes
Cockpit chairs	yes
Bathing platform	yes
Boarding ladder	aluminum
Transom door	yes
Gangway	yes
Deck shower	yes
Anchor	yes
Windlass	yes
Deck wash	yes
Dinghy	rigid inflatable
Outboard	Honda 40 Hp 4 stroke
Sea railing	stainless steel
Grab rail (superstructure)	stainless steel
Railing side opening gates	yes
Wiper	yes
Clearview window	yes
Horn	air pressure
TV	Medion
TV receiver	yes
Radio	Fusion MS-RA770
Cockpit speakers	yes
Speakers in salon	JBL
Speakers in cabin	yes



VAN DER VALK 24M



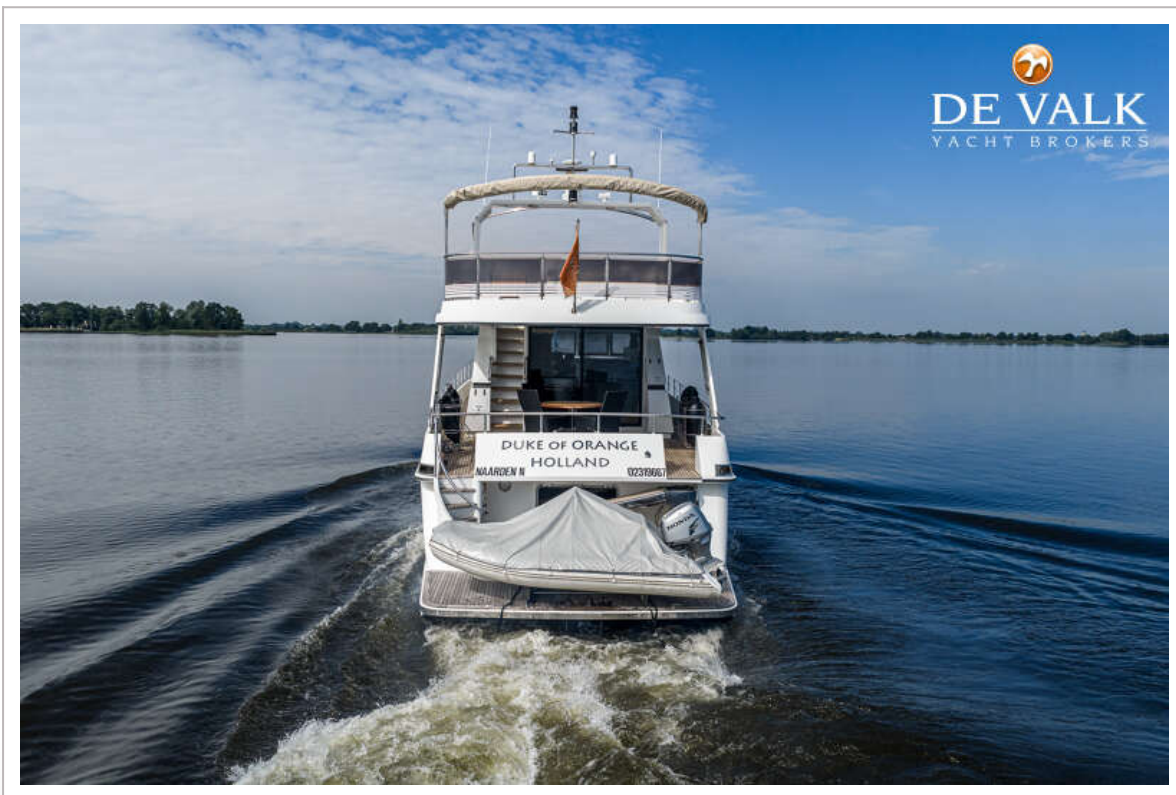
VAN DER VALK 24M



VAN DER VALK 24M



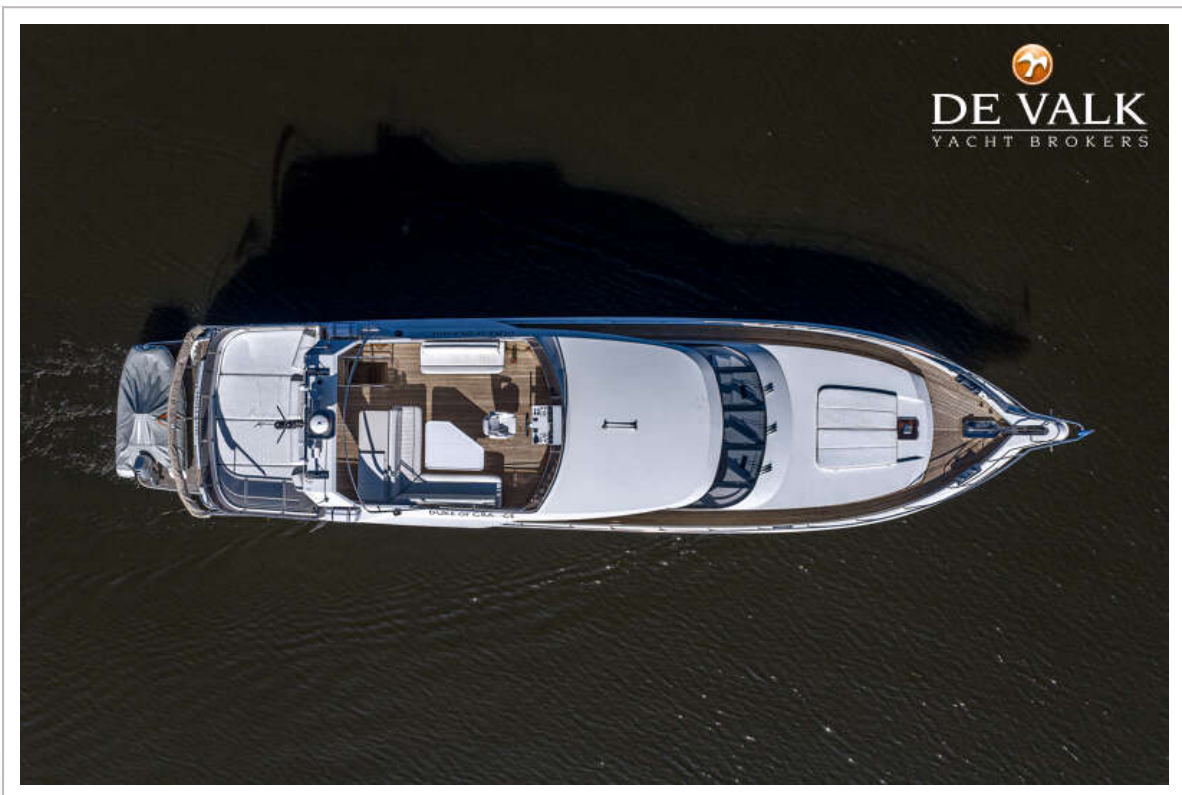
VAN DER VALK 24M



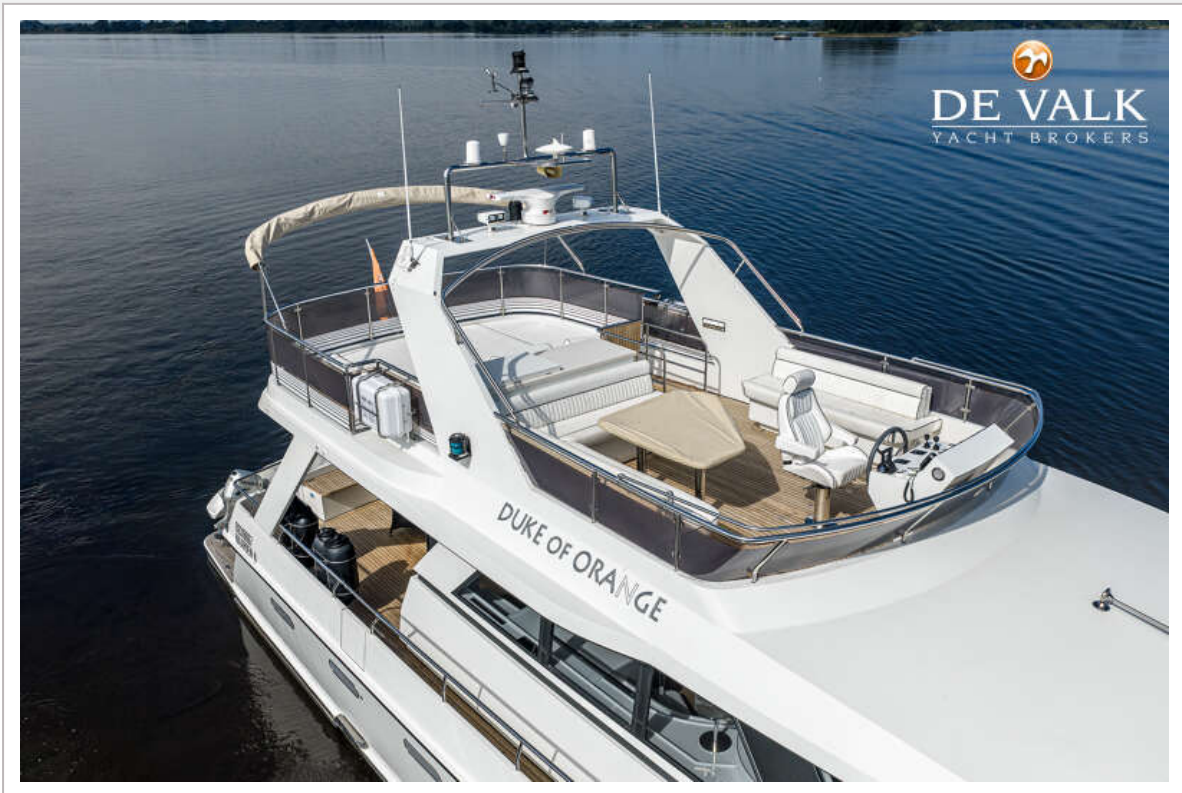
VAN DER VALK 24M



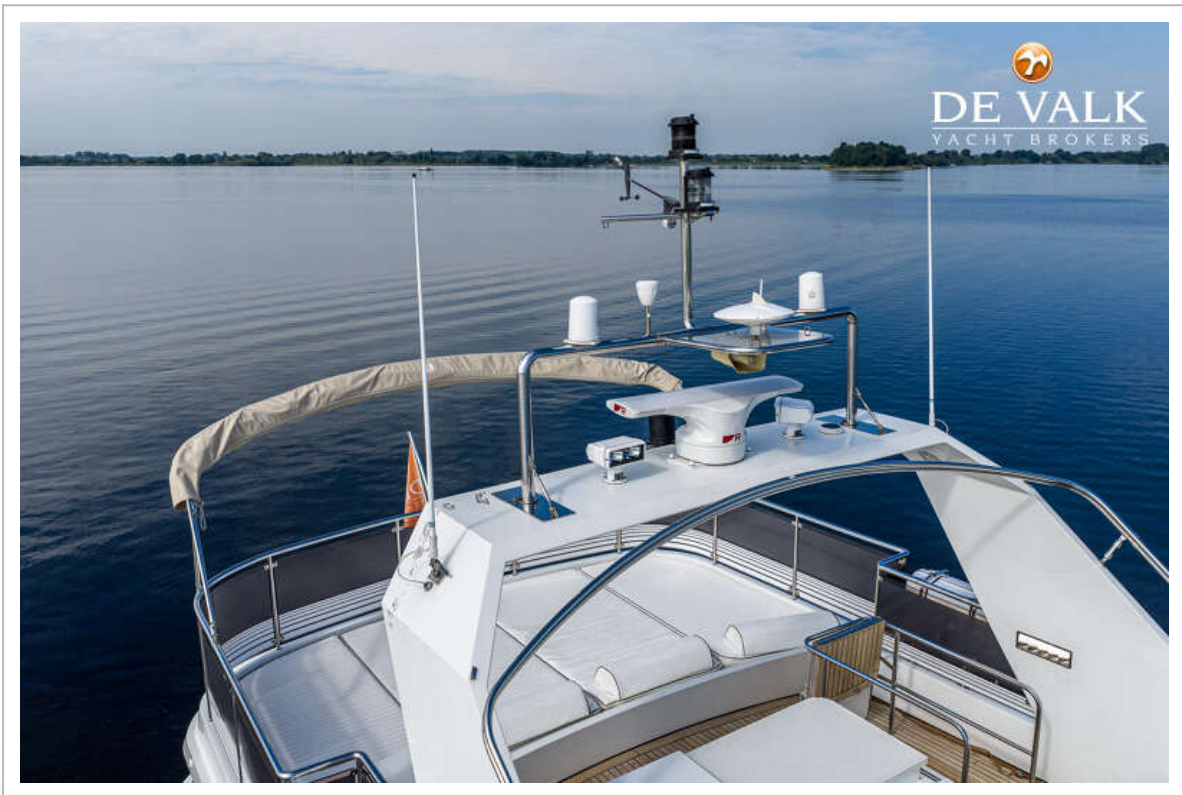
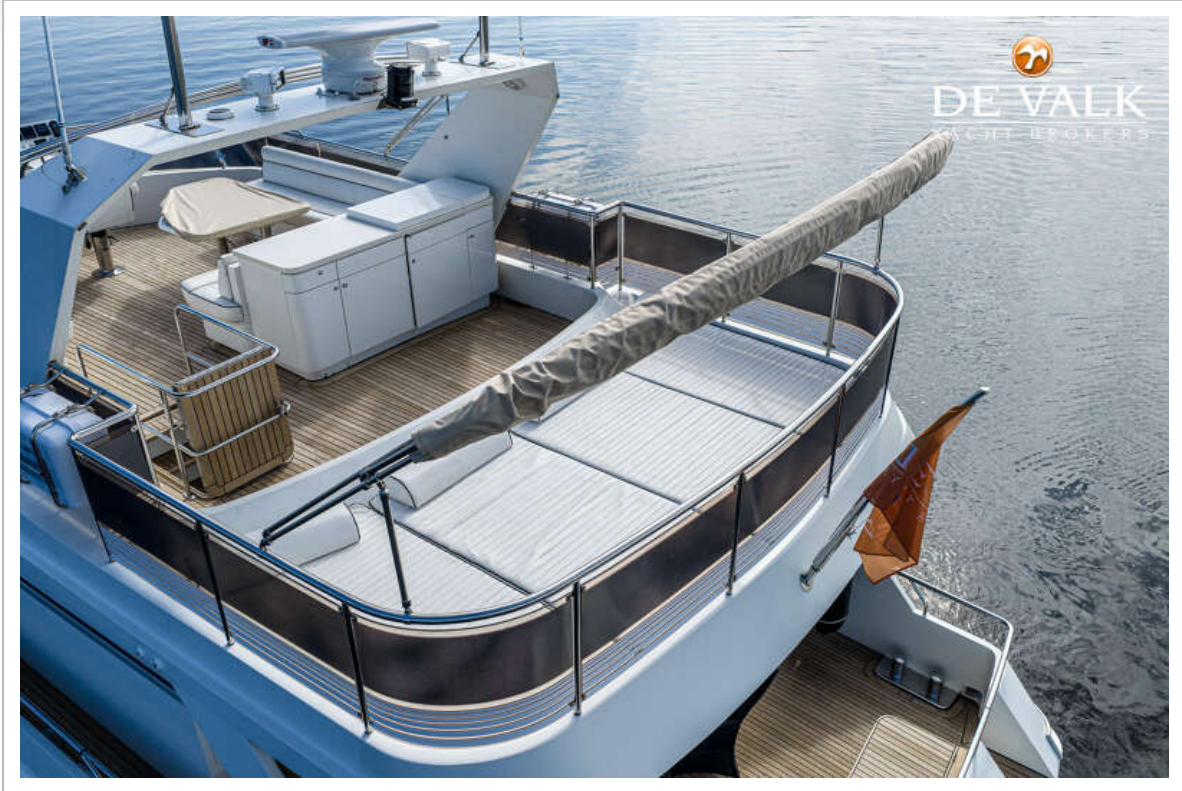
VAN DER VALK 24M



VAN DER VALK 24M



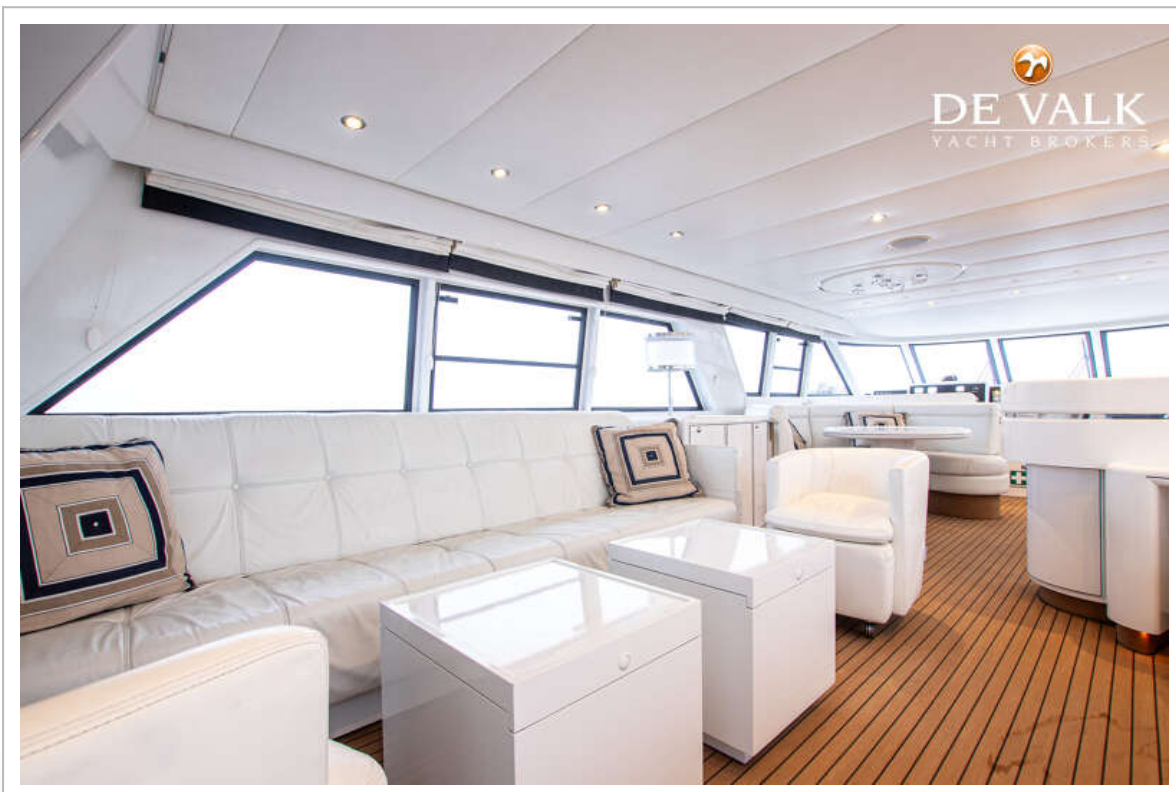
VAN DER VALK 24M



VAN DER VALK 24M



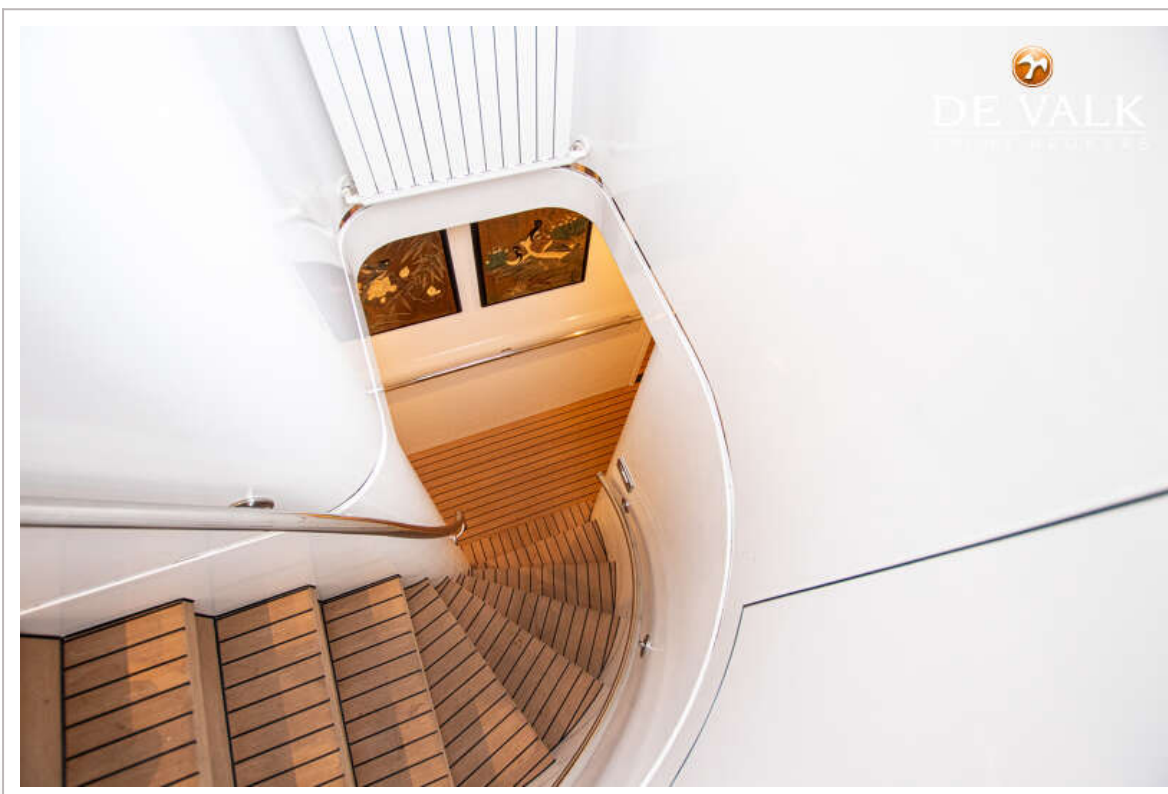
VAN DER VALK 24M



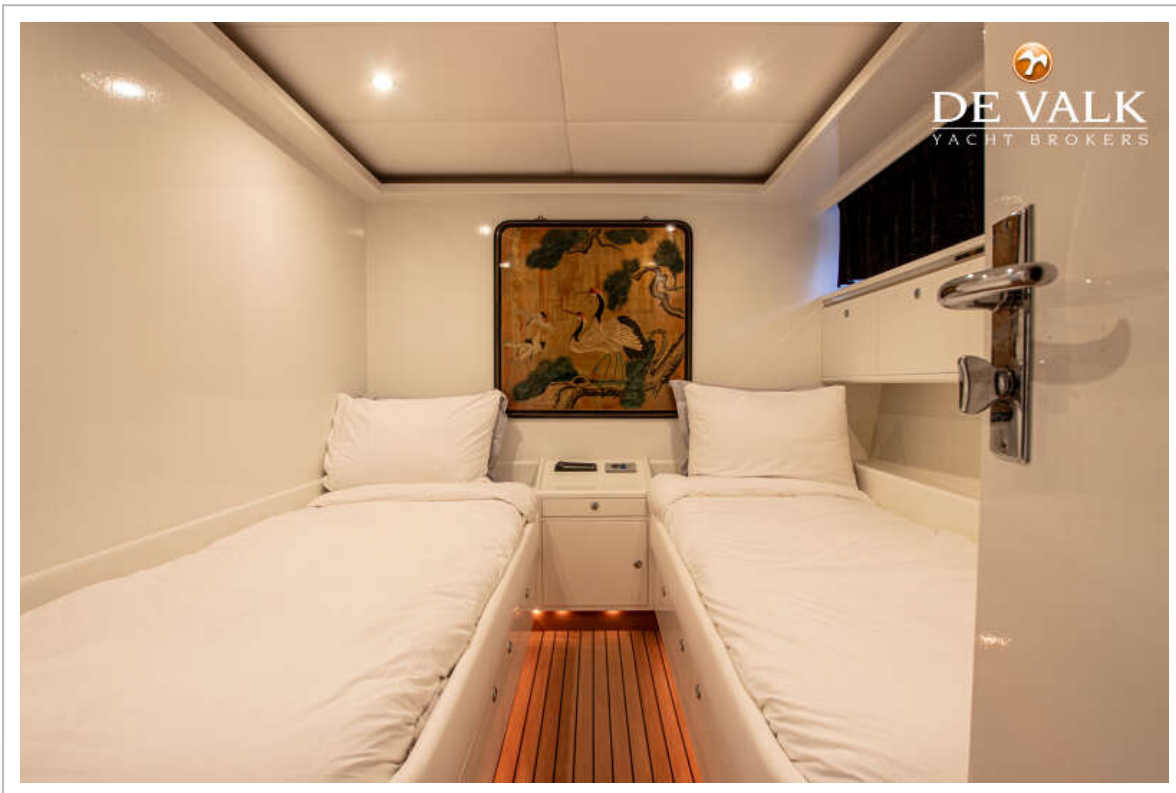
VAN DER VALK 24M



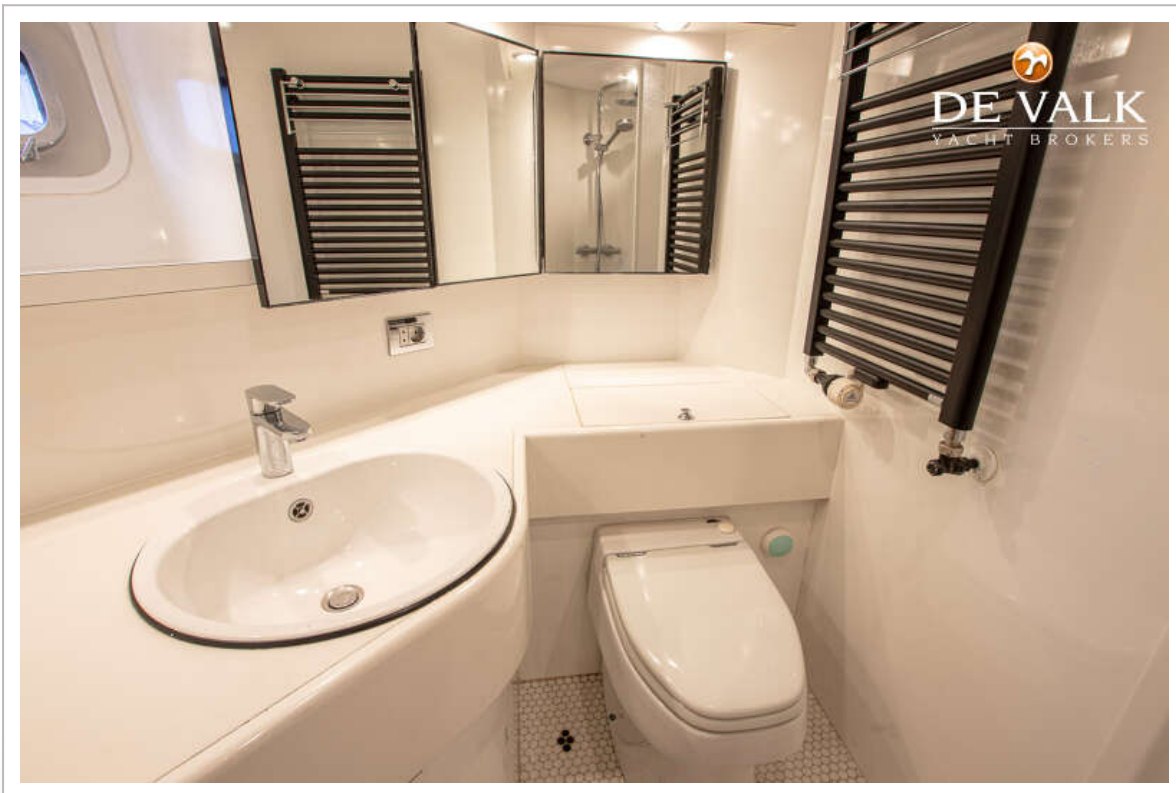
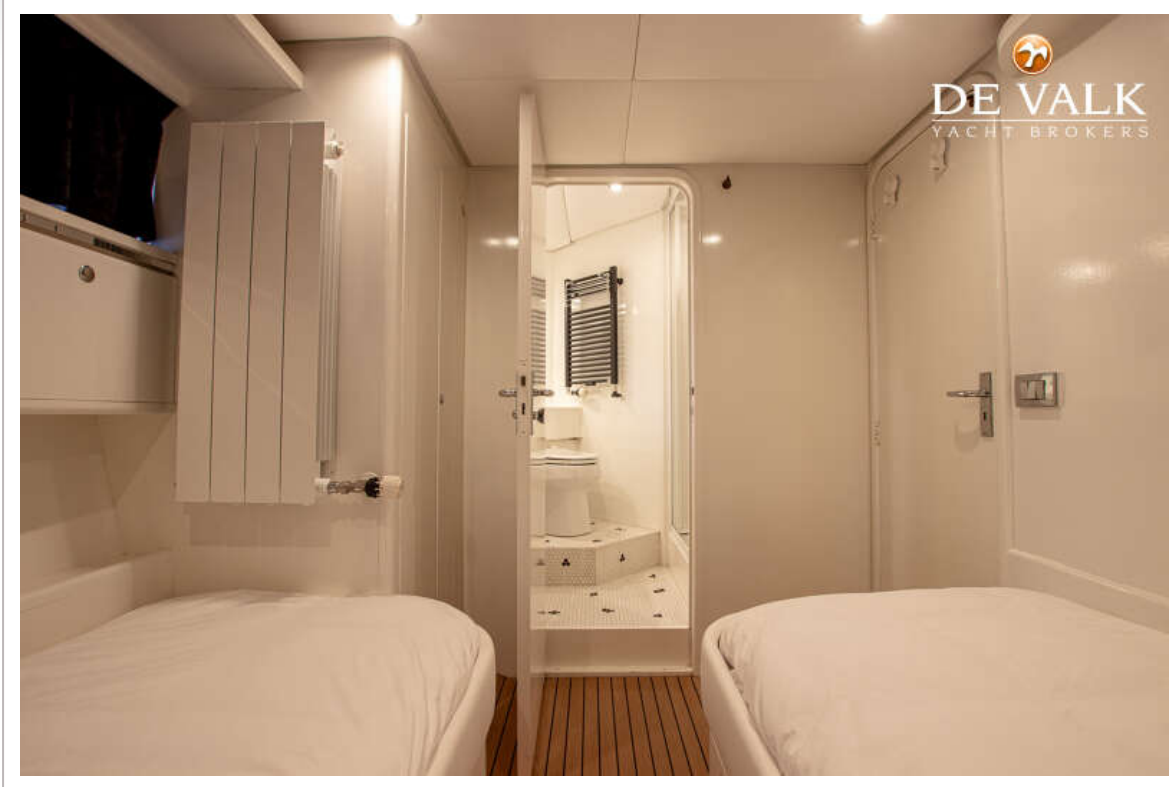
VAN DER VALK 24M



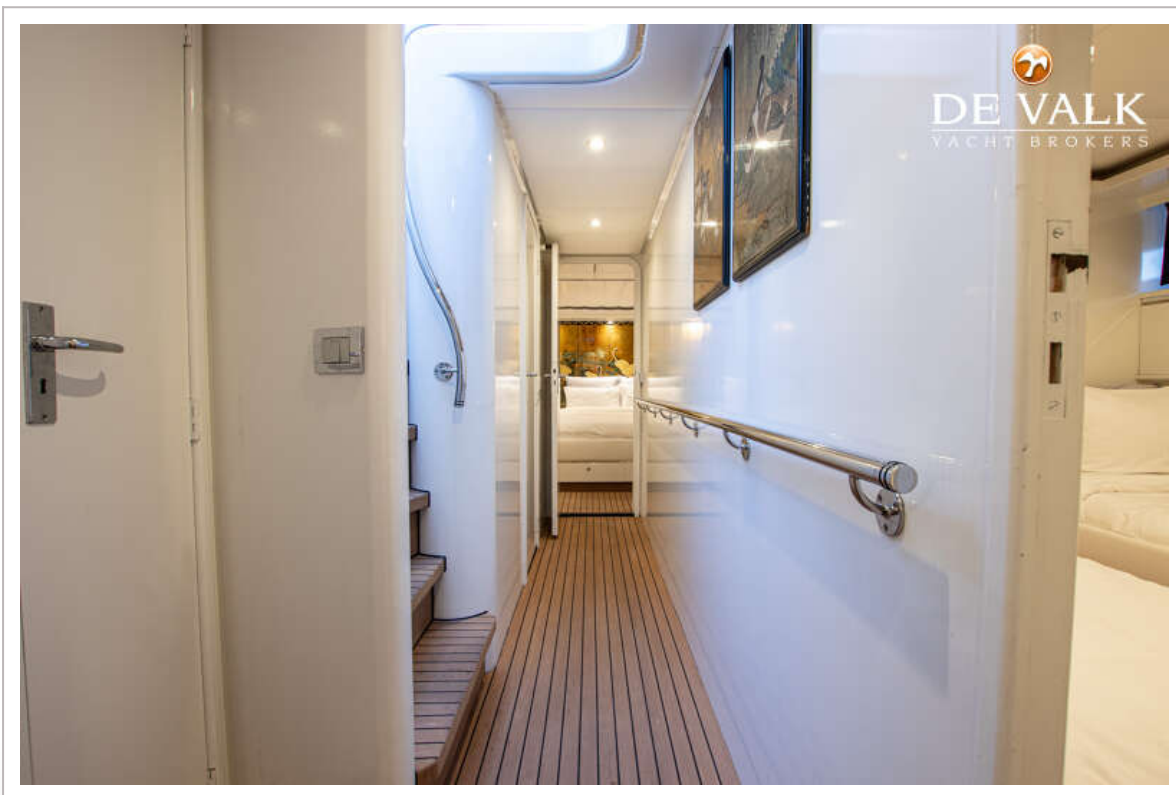
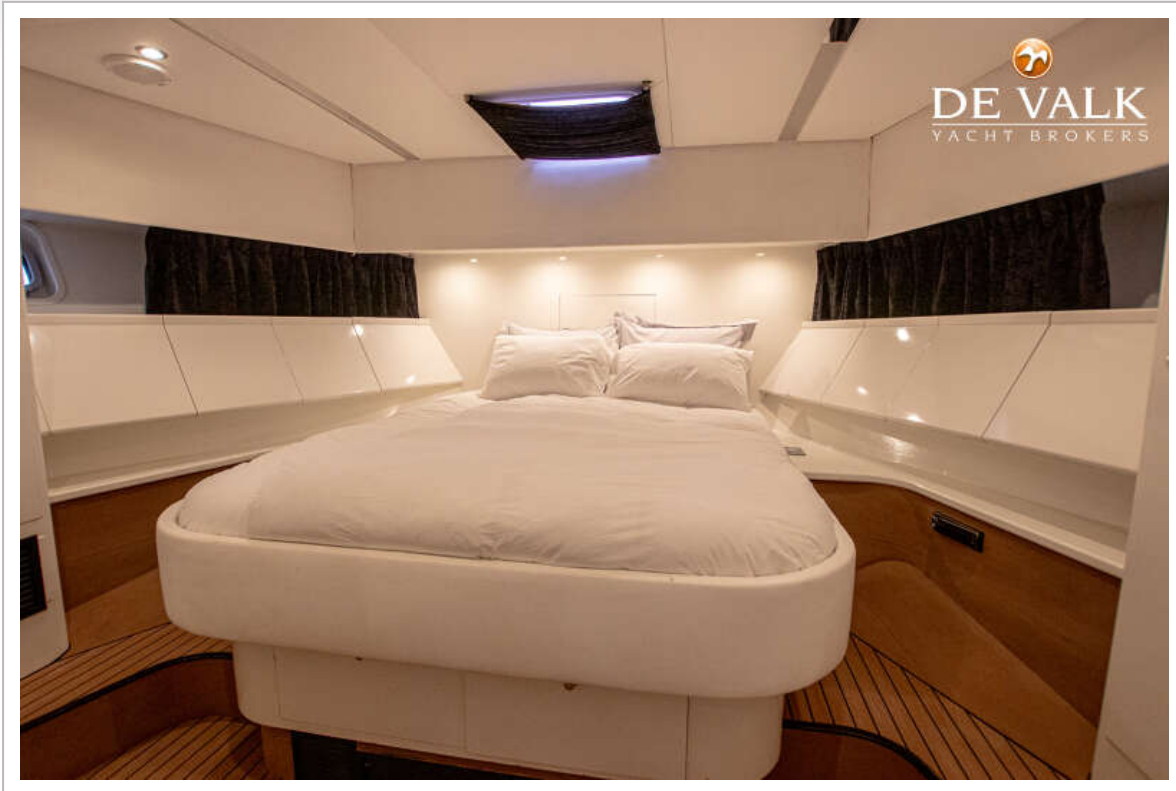
VAN DER VALK 24M



VAN DER VALK 24M



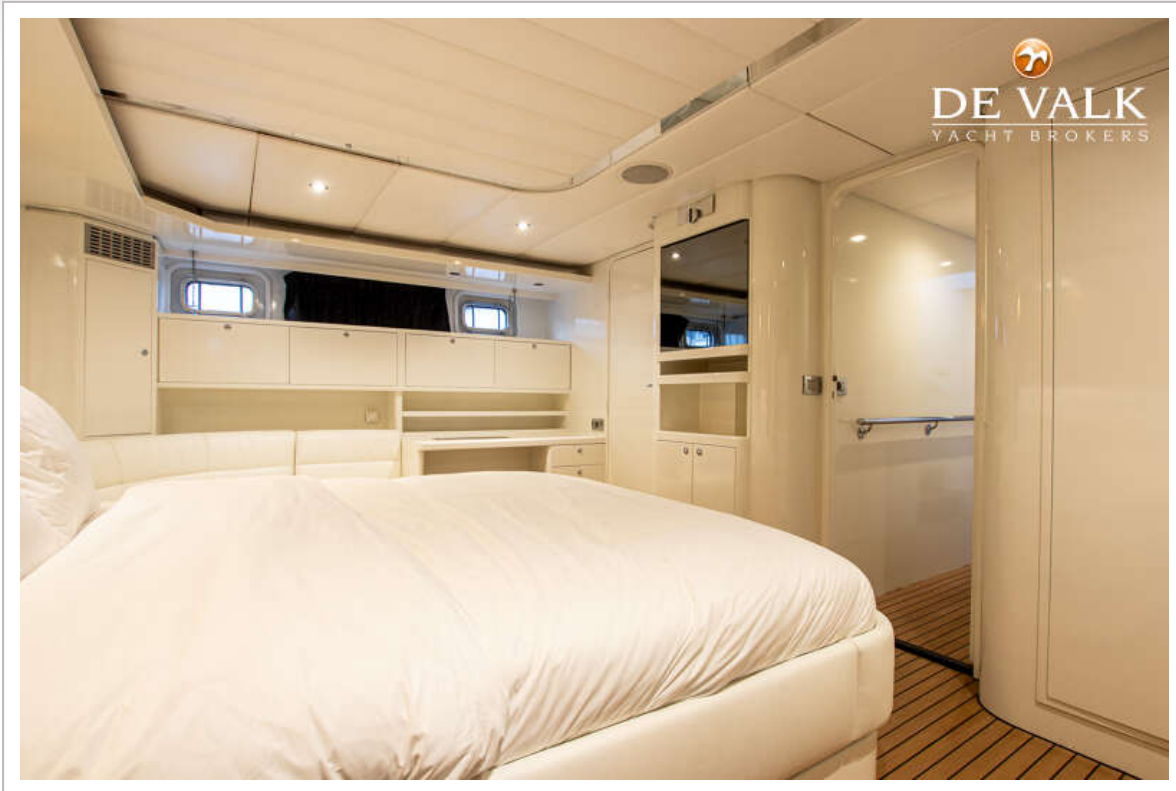
VAN DER VALK 24M



VAN DER VALK 24M



VAN DER VALK 24M



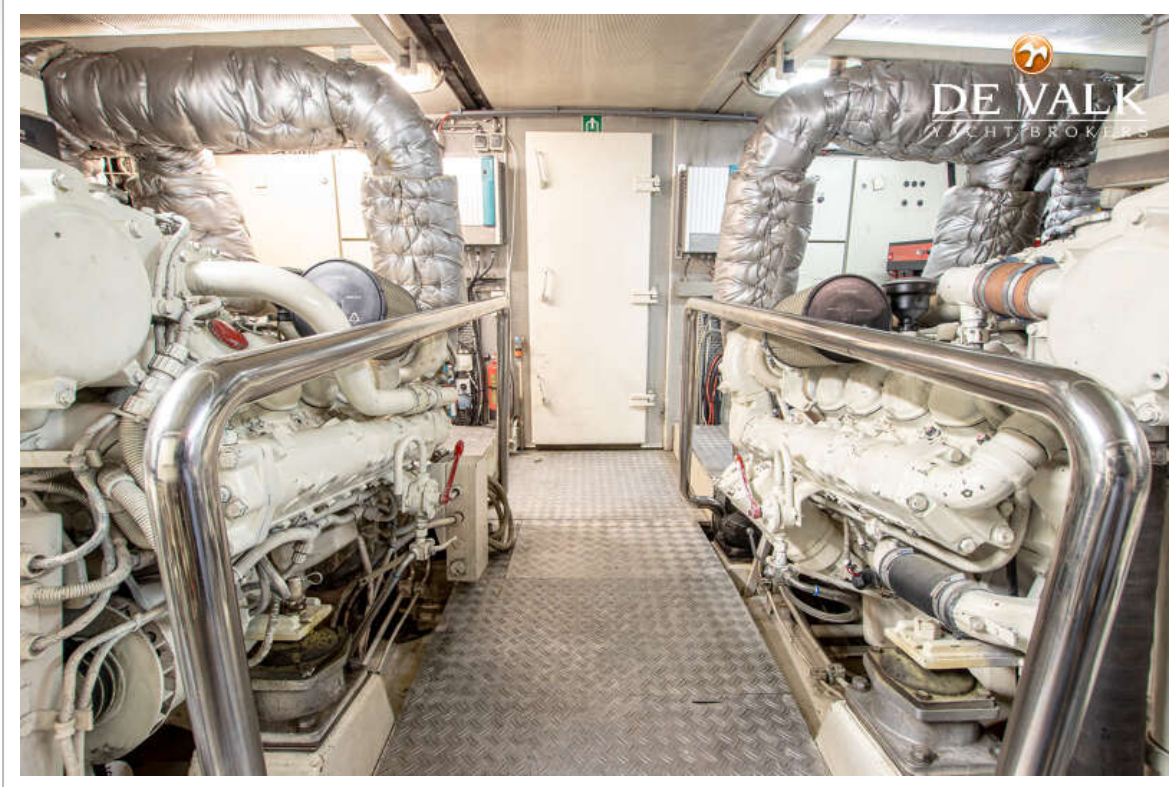
VAN DER VALK 24M



VAN DER VALK 24M



VAN DER VALK 24M



VAN DER VALK 24M

