



DE VALK  
YACHT BROKERS



SUPER VAN CRAFT 1160



DE VALK  
YACHT BROKERS

# SUPER VAN CRAFT 1160

## BROKER'S COMMENTS

This Super Van Craft 1160 combines traditional Dutch elegance with reliable performance. Her timeless mahogany finish, cozy interior, and classic steel hull make her ideal for relaxed cruising. Well-maintained and featuring twin engines, she offers charm and comfort in a compact size. A true gentleman's motor yacht, perfect for inland and coastal waters.

*Hielke Peters*

## SPECIFICATIONS

<b>Dimensions</b>	12.20 x 3.65 x 1.25 (m)	<b>Builder</b>	Klaassen Jachtbouw
<b>Built</b>	1982	<b>Cabins</b>	2
<b>Material</b>	Steel	<b>Berths</b>	6
<b>Engine(s)</b>	2 x Volvo Penta MD32 diesel	<b>Hp/Kw</b>	2 x 90.00 (hp), 66.24 (kw)
<b>Asking price</b>	€ 99.500 (VAT Paid)	<b>Lying</b>	at sales office

## CONTACT

<b>Sales office</b>	De Valk Loosdrecht B.V.	<b>Telephone</b>	+31 (0)35 582 90 30
<b>Address</b>	't Breukeleveense Meentje 6 1231LM Loosdrecht / Wijdmeren NL	<b>E-mail</b>	loosdrecht@devalk.nl

## DISCLAIMER

These particulars are given in good faith as supplied but cannot be guaranteed.



# SUPER VAN CRAFT 1160

## GENERAL

<b>Model</b>	SUPER VAN CRAFT 1160
<b>Type</b>	motor yacht
<b>LOA (m)</b>	12,20
<b>Beam (m)</b>	3,65
<b>Draft (m)</b>	1,25
<b>Headroom (m)</b>	1,90
<b>Year built</b>	1982
<b>Builder</b>	Klaassen Jachtbouw
<b>Country</b>	The Netherlands
<b>Gross tonnage</b>	14
<b>Hull material</b>	steel
<b>Hull colour</b>	white
<b>Hull shape</b>	multi hard chine
<b>Superstructure material</b>	wood
<b>Rubbing strake</b>	steel
<b>Deck material</b>	steel
<b>Deck finish</b>	teak
<b>Superstructure deck finish</b>	paint
<b>Cockpit deck finish</b>	teak
<b>Window frame</b>	aluminium
<b>Window material</b>	tempered glass
<b>Deckhatch</b>	yes
<b>Portholes</b>	aluminium 6 each side
<b>Mast can be lowered</b>	manual
<b>Fuel tank (litre)</b>	1200
<b>Level indicator (fuel tank)</b>	VDO
<b>Freshwater tank (litre)</b>	800
<b>Level indicator (freshwater)</b>	yes
<b>Wheel steering</b>	chain steering
<b>Inside helm position</b>	yes



# SUPER VAN CRAFT 1160

Outside helm position chain steering

## ACCOMMODATION

Cabins	2
Berths	6
Interior	mahogany
Floor	teak and holly
Aft deck	yes
Deck saloon	yes
Headroom saloon (m)	1,90
Sliding roof	manual
Heating	diesel ducted hot air Eberspächer
Aft Cabin	yes
Dinette to convert into berth	yes
Opening door to aft deck	yes
Galley	yes
Countertop	wood
Sink	stainless steel
Cooker	calor gas
Oven	yes
Fridge	With freezer Vitrifrigo
Hot water system	220V + engine
Water pressure system	electrical
Owners cabin	twin single
Bed length (m)	2,00
Wardrobe	hanging/drawers/shelves
Bathroom	shared
Toilet	shared
Toilet system	electric
Wash basin	in the bathroom
Shower	shared



# SUPER VAN CRAFT 1160

Guest cabin 1	bunk bed
Wardrobe	hanging and shelves

## MACHINERY

No of engines	2
Make	Volvo Penta
Type	MD32
HP	90
kW	66.24
Fuel	diesel
Engine hours	2810
Engine cooling system	freshwater heat exchanger
Drive	shaft
Shaft seal	yes
Engine controls	bowden cable
Bowthruster	electric
Sternthruster	electric
Exhaust	dry
Propeller type	fixed
Propeller shaft material	stainless steel
Shaft lubrication	grease
Manual bilge pump	yes
Electric bilge pump	yes
Bilge alarm	yes
Batteries	yes
Start battery	2x12v 120Ah
Service battery	4x 12v 140Ah
Battery charger	Mastervolt 12V/60 Mastervolt 24V/15
Shorepower	with cable

## NAVIGATION



# SUPER VAN CRAFT 1160

Compass	yes
Depth sounder/log	Raymarine ST40
VHF handheld	Cobra Marine HH350
Rudder angle indicator	yes
Plotter/GPS	Raymarine C70
Navigation lights	yes

## EQUIPMENT

Fixed windscreen	yes
Sprayhood	yes
Cockpit cover	yes
Bimini	yes
Sun awning	yes
Winter cover	yes
Window cover	yes
Cockpit cushions	yes
Cockpit table	yes
Cockpit chairs	yes
Bathing platform	yes
Boarding ladder	steel
Transom door	yes
Gangway	yes
Anchor	yes
Windlass	manual
Davits	steel
Davits controls	manual
Sea railing	steel
Grab rail (superstructure)	wood
Railing side opening gates	yes
Wiper	yes
Clearview window	yes



# SUPER VAN CRAFT 1160

Window ventilator	yes
Horn	air pressure
Horn cover	yes
Clock - barometer	yes



# SUPER VAN CRAFT 1160



# SUPER VAN CRAFT 1160



# SUPER VAN CRAFT 1160



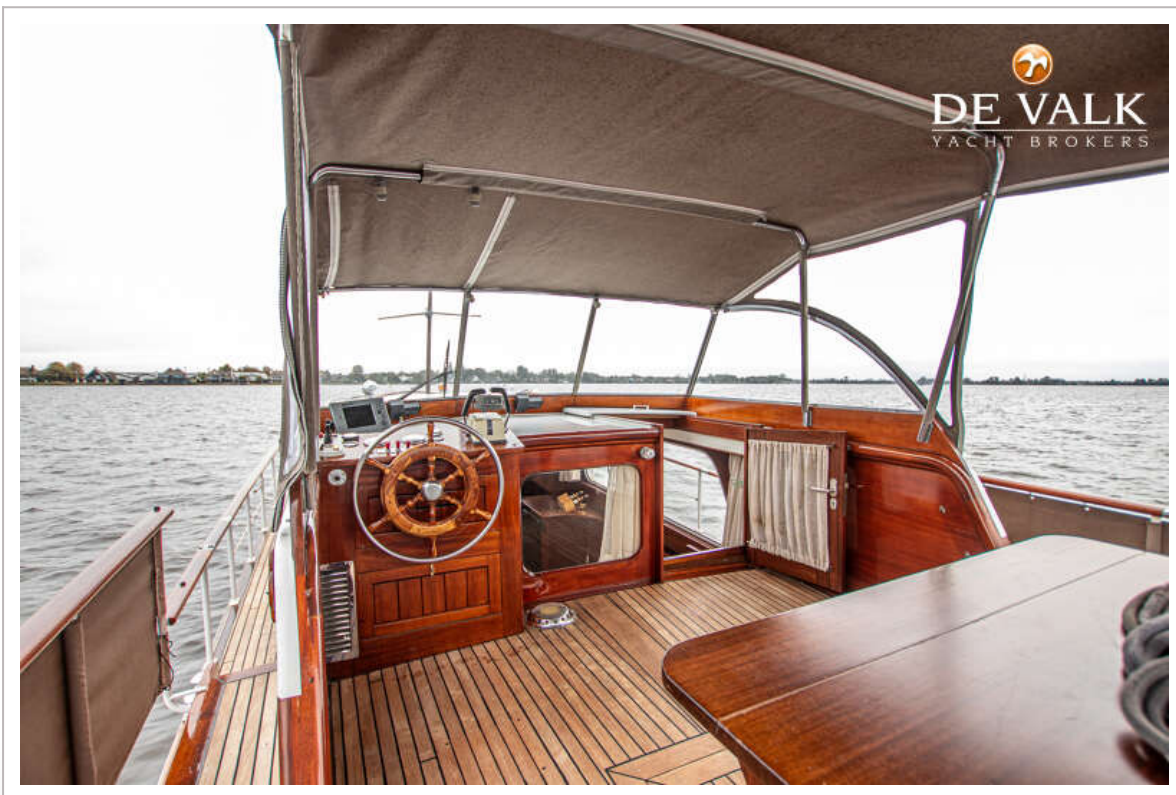
# SUPER VAN CRAFT 1160



# SUPER VAN CRAFT 1160



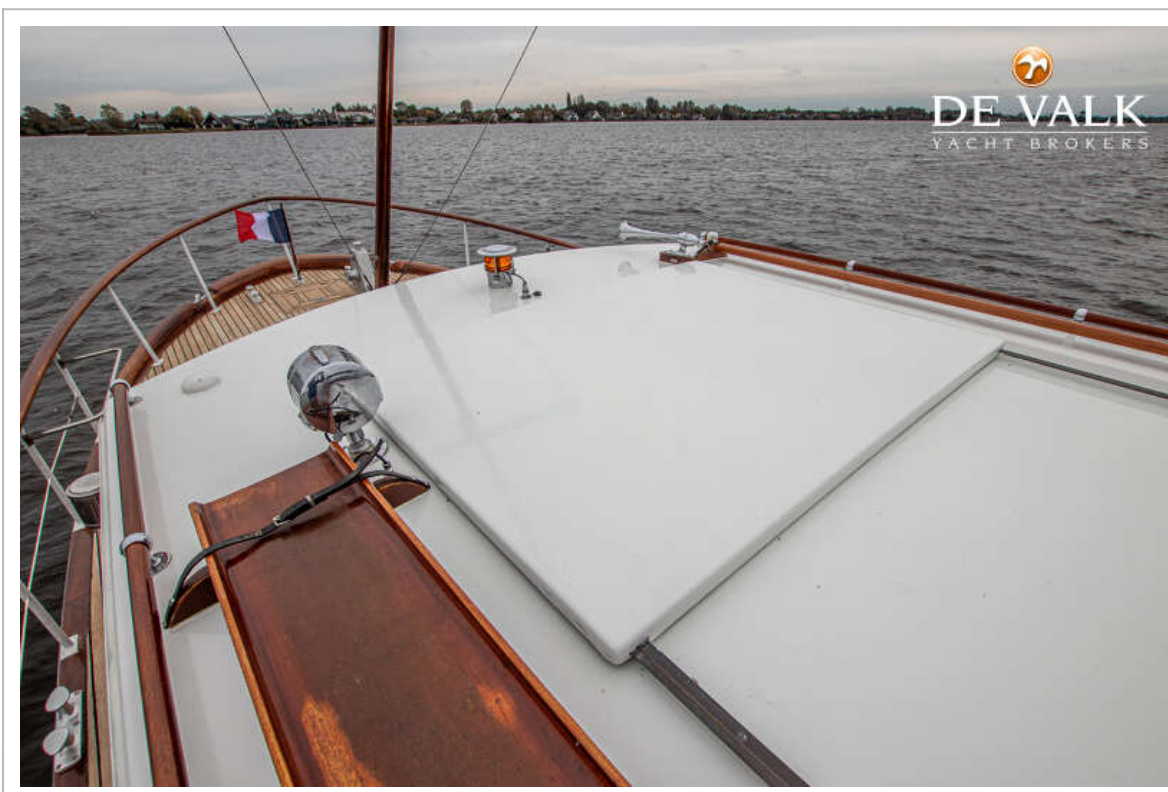
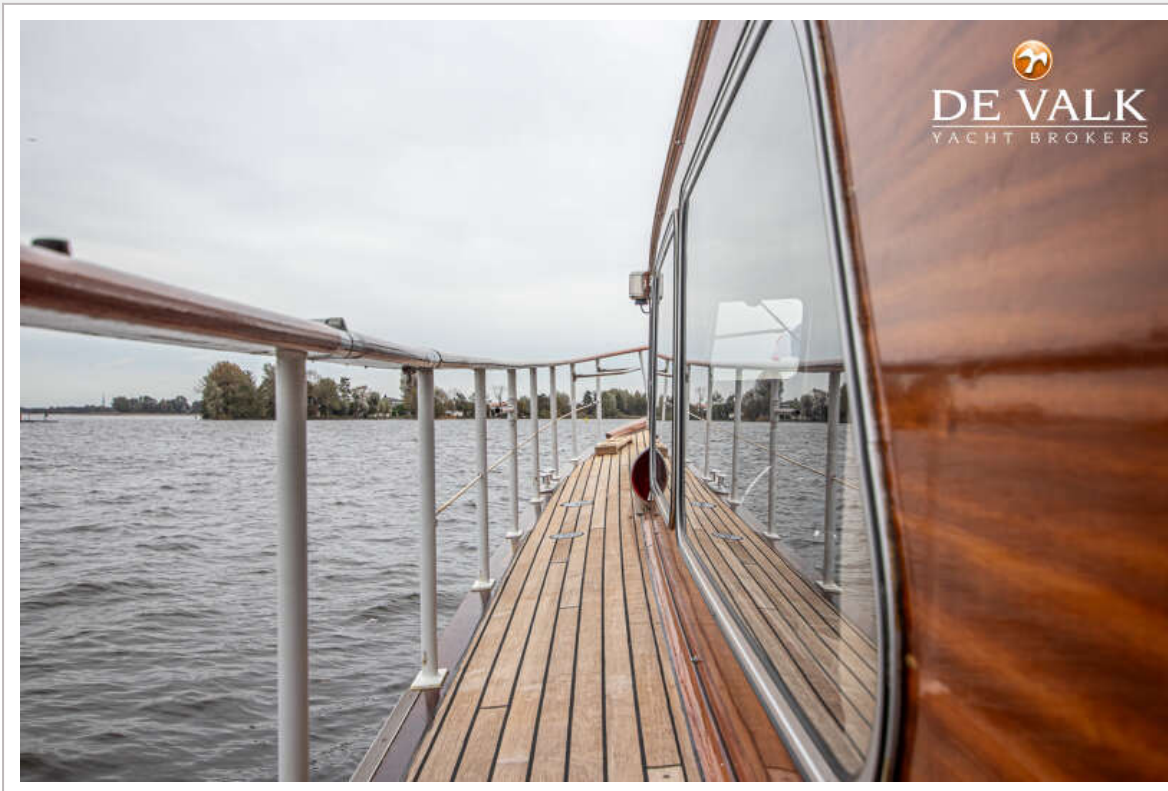
# SUPER VAN CRAFT 1160



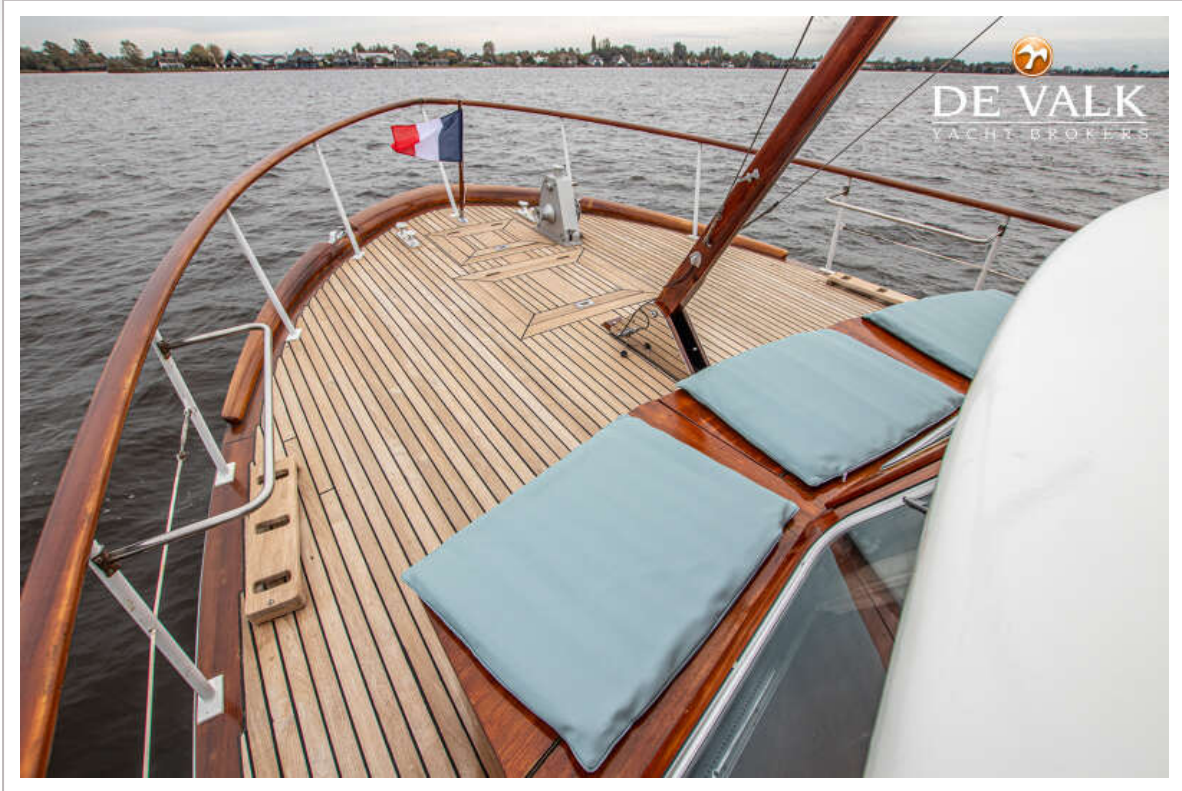
# SUPER VAN CRAFT 1160



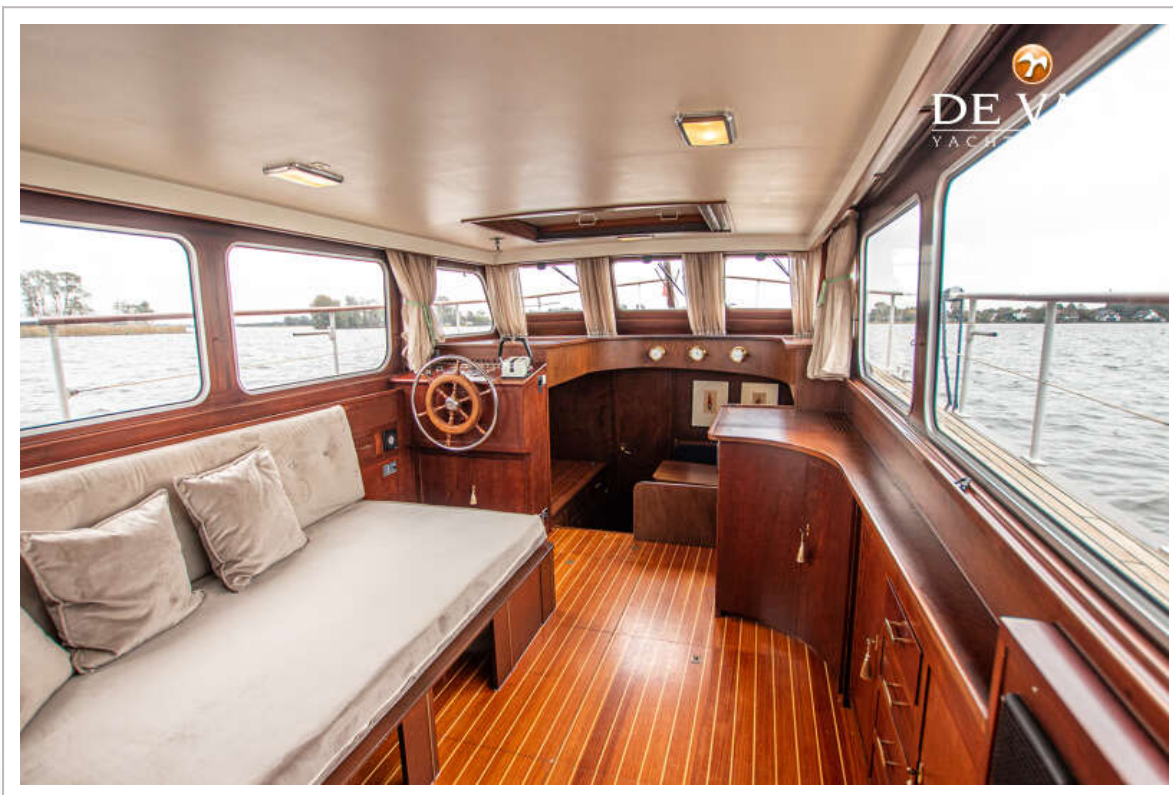
# SUPER VAN CRAFT 1160



# SUPER VAN CRAFT 1160



# SUPER VAN CRAFT 1160





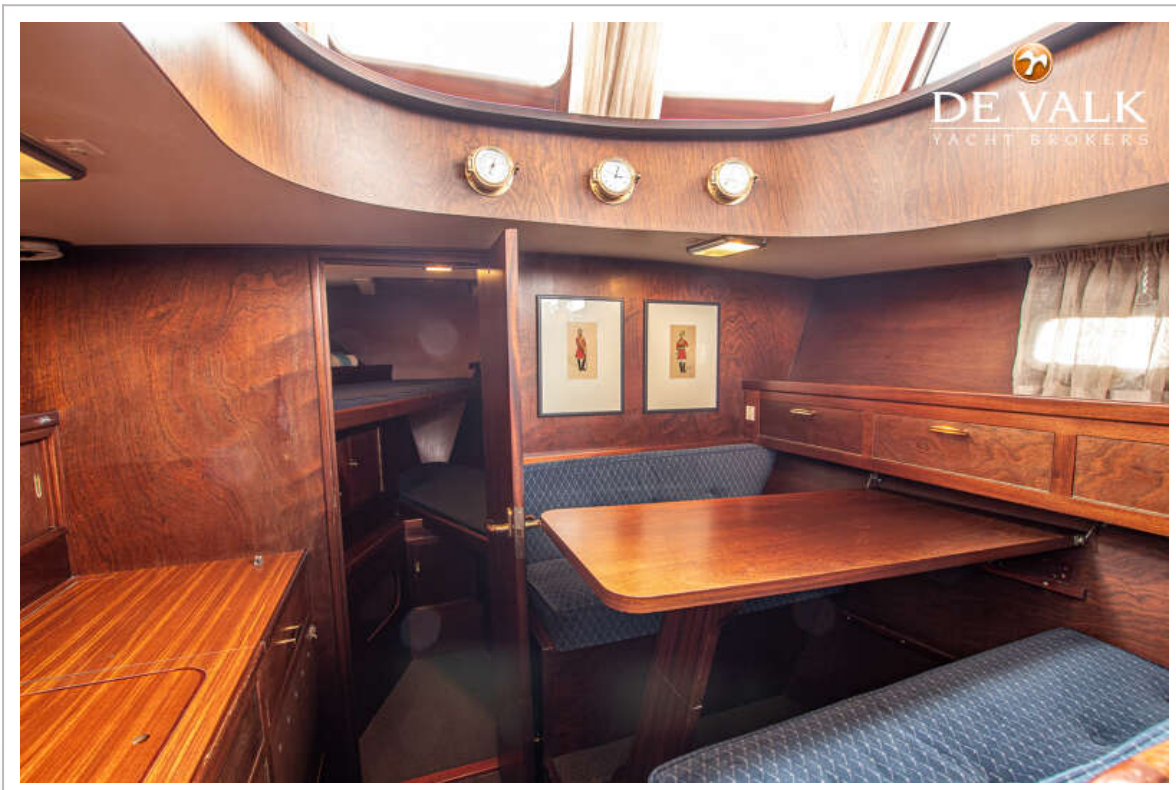
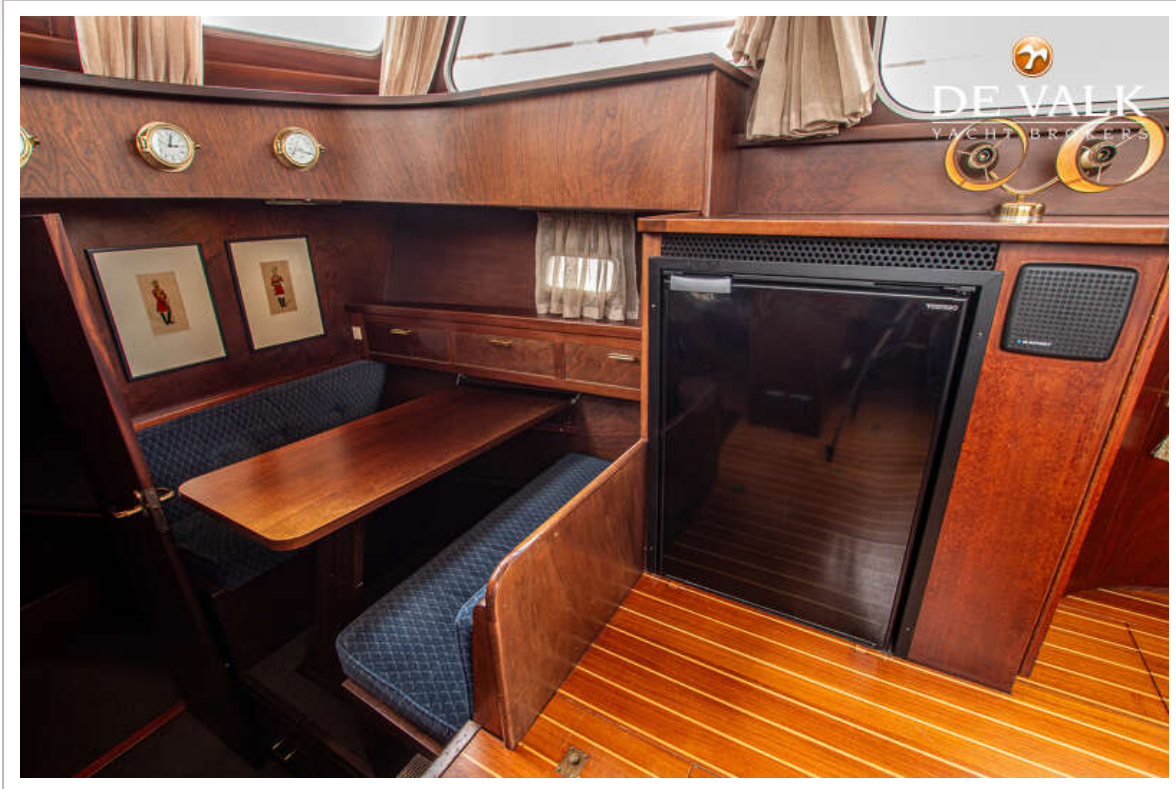
# SUPER VAN CRAFT 1160



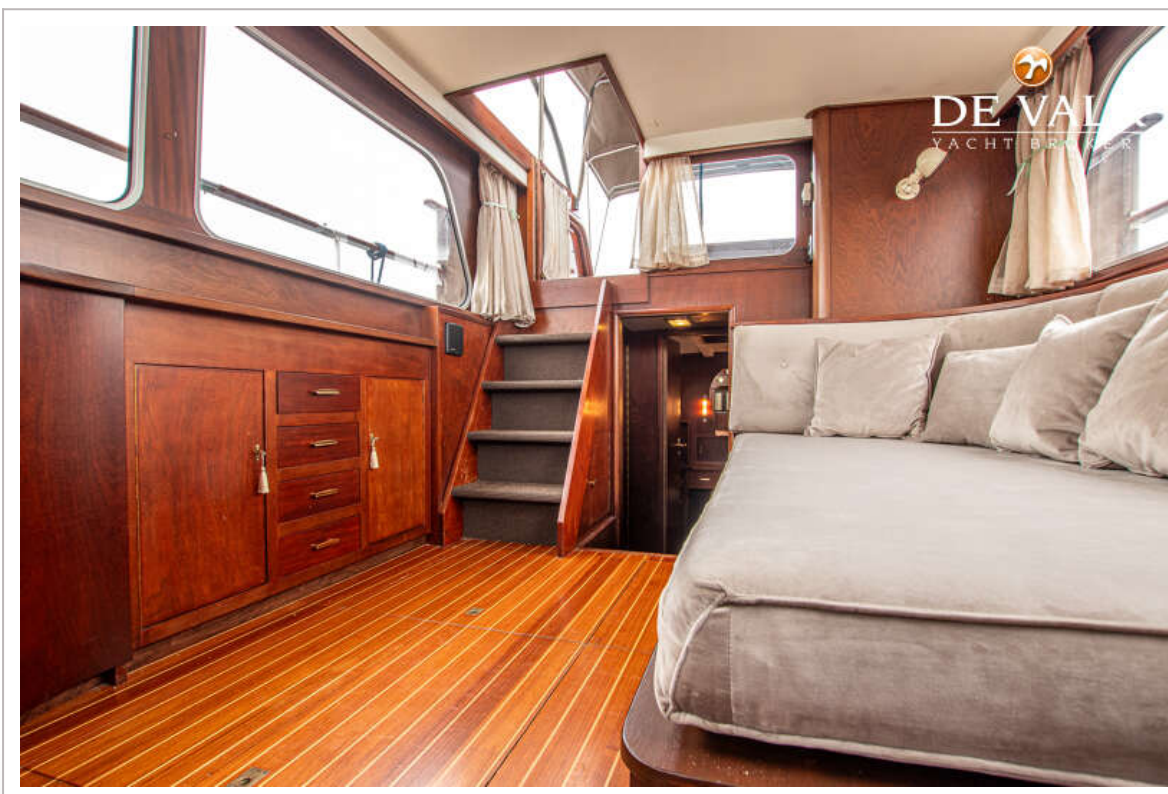
# SUPER VAN CRAFT 1160



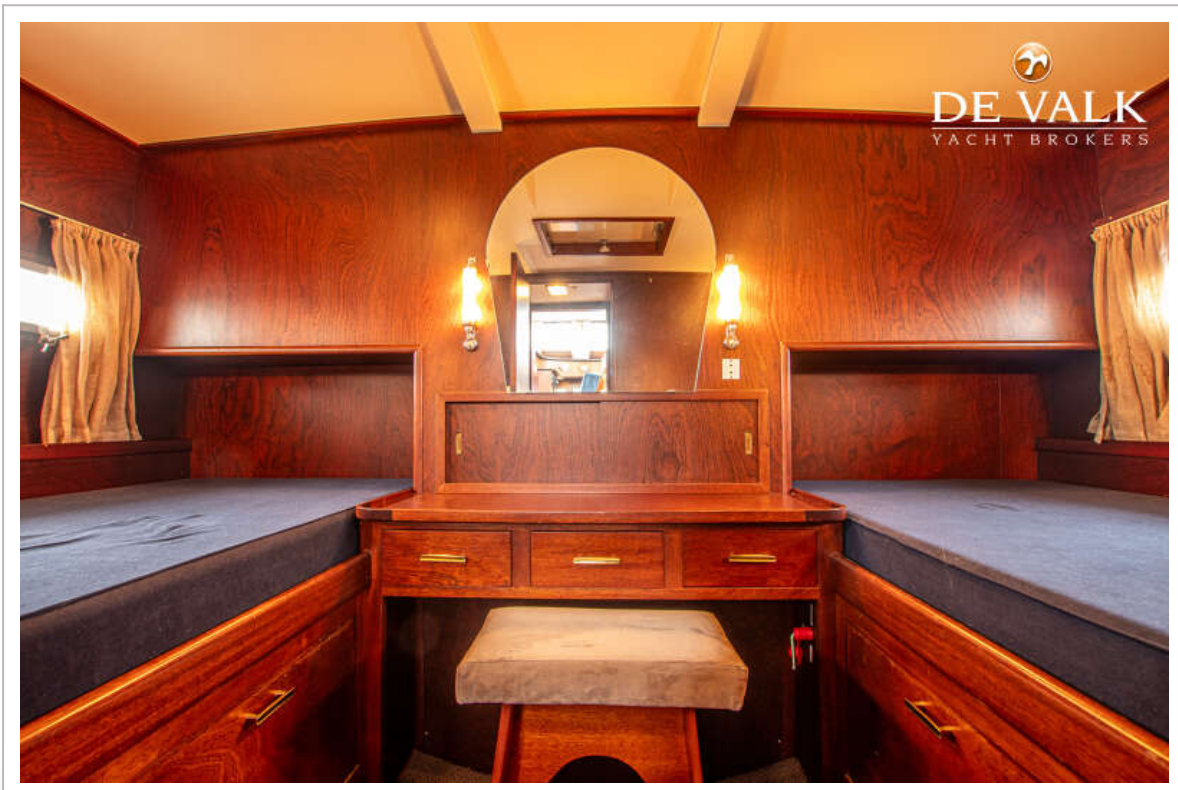
# SUPER VAN CRAFT 1160



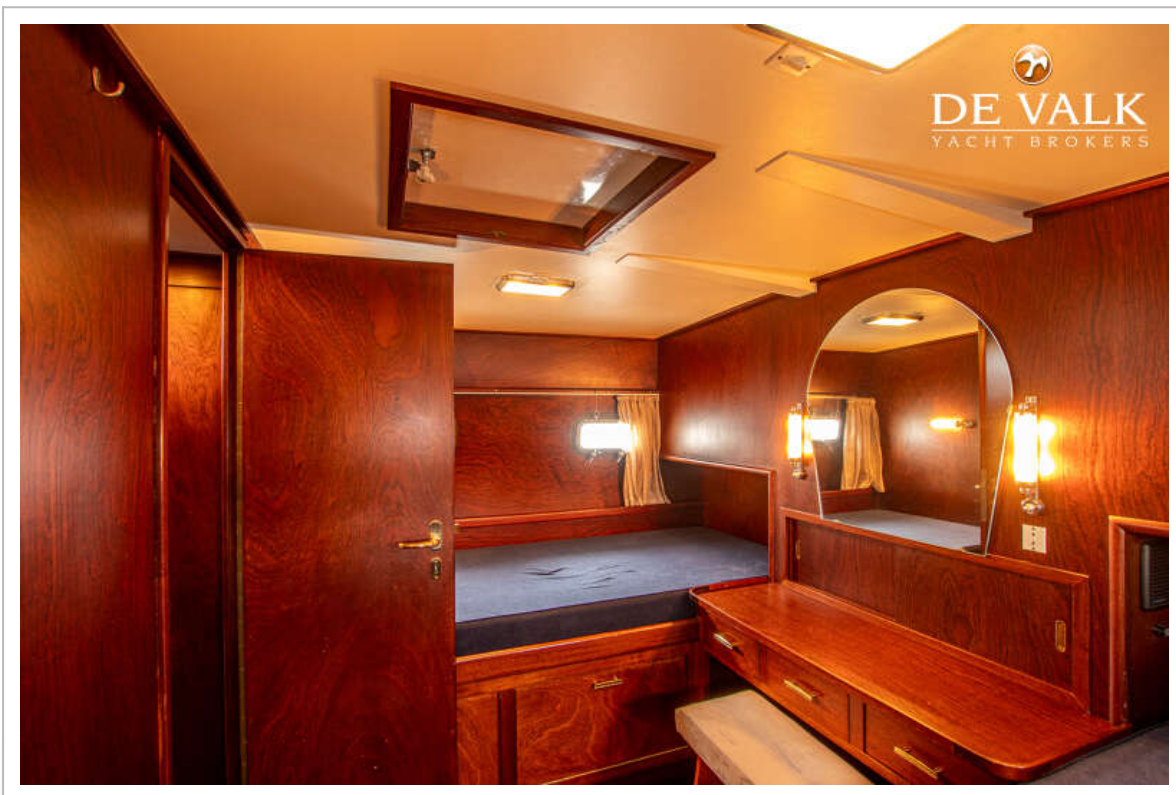
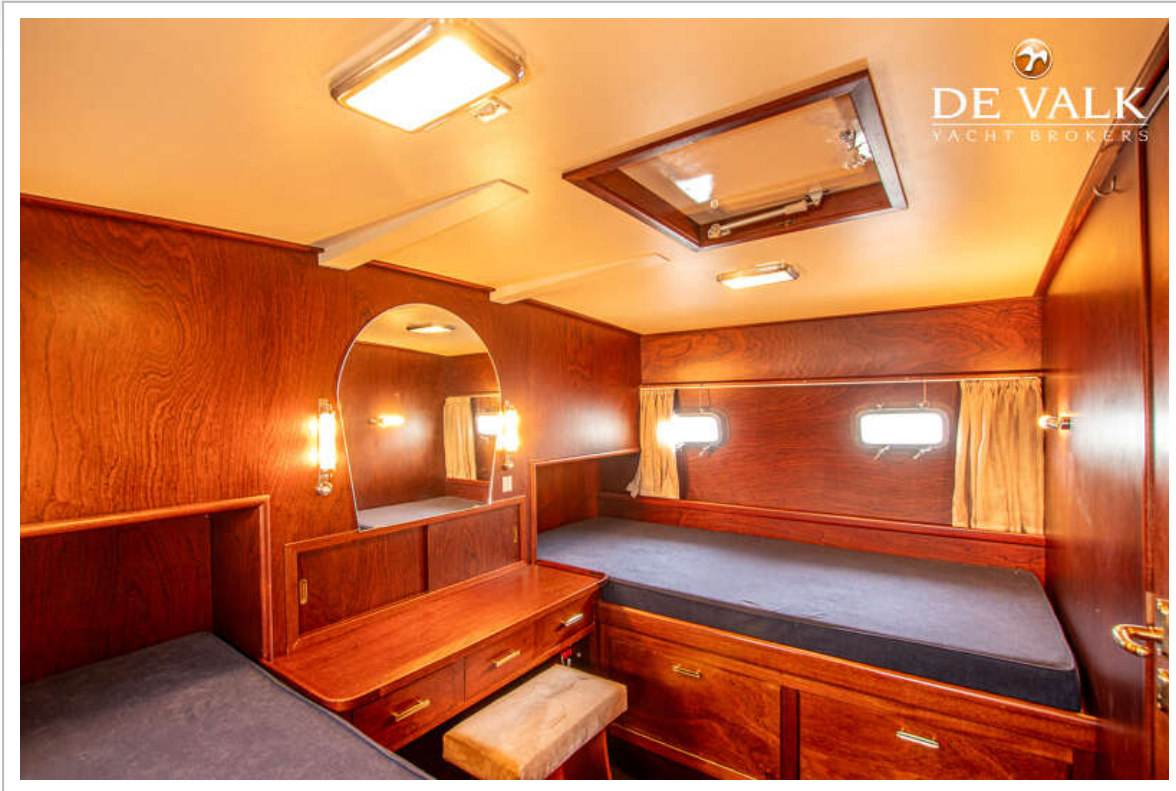
# SUPER VAN CRAFT 1160



# SUPER VAN CRAFT 1160



# SUPER VAN CRAFT 1160



# SUPER VAN CRAFT 1160



