



HANSE 455



BROKER'S COMMENTS

For sale: Hanse 455 in excellent condition. This magnificent Hanse 455 from 2016 is in truly beautiful condition and has only been used privately, never chartered. In 2017, a new and more powerful engine was - under warranty - installed with slightly improving performance. Comfort, speed and elegance come together in this perfectly maintained yacht, which is unsurprisingly ready for many sailing adventures. She is fully equipped and a unique opportunity for the discerning sailor who recognises quality and good maintenance. Viewing by appointment, feel free to be surprised!

Willem Koopmans

SPECIFICATIONS

Dimensions	14.04 x 4.38 x 2.25 (m)	Builder	Hanse Yachts AG
Built	2016	Cabins	3
Material	GRP	Berths	8
Engine(s)	1 x Volvo Penta D2-60 diesel	Hp/Kw	60.00 (hp), 44.16 (kw)
Asking price	€ 269.000 (VAT Paid)	Lying	contact sales office

CONTACT

Sales office	De Valk Costa Blanca	Telephone	+34 96 50 21 569
Address	Costa Blanca Region 03730 Javea Alicante ES	E-mail	costablanca@devalk.nl

DISCLAIMER

These particulars are given in good faith as supplied but cannot be guaranteed.



GENERAL

Model	HANSE 455
Type	sailing yacht
LOA (m)	14,04
LWL (m)	12,20
Beam (m)	4,38
Draft (m)	2,25
Air draft (m)	21,50
Headroom (m)	2,00
Year built	2016
Builder	Hanse Yachts AG
Country	Germany
Displacement (t)	11,7
CE norm	A
Hull material	GRP
Hull colour	off-white
Hull shape	round-bilged
Keel type	fin keel
Superstructure material	GRP
Deck material	GRP
Deck finish	synthetic teak
Superstructure deck finish	non-skid moulded in
Cockpit deck finish	synthetic teak
Antifouling (year)	Sept. 2025
Fuel tank (litre)	polyethylene 220
Level indicator (fuel tank)	yes
Freshwater tank (litre)	polyethylene 450
Level indicator (freshwater)	yes
Blackwater tank (litre)	polyethylene
Wheel steering	cable steering Double Y-spoke wheels, composite, black, Jefa Steering Systems
Outside helm position	cable steering Double with full set of instruments on both sides



Emergency tiller	yes
More info on hull	Hull polished September 2025 (not shown on the pictures)
Extra info	Superb looking vessel, she comes with very fresh "looks"

ACCOMMODATION

Cabins	3
Berths	8
Interior	oak White oak
Layout	Owner in front, 2 guest cabins in aft
Floor	teak
Headroom saloon (m)	2
Aft Cabin	Double
Dinette to convert into berth	Makes 8 berths in total
Sliding door to cockpit	Going down system
Galley	yes
Countertop	Seashell white
Sink	stainless steel Double
Cooker	calor gas 3 burner
Oven	yes
Microwave	LG
Fridge	Isotherm and extra Waeco front loader
Hot water system	220V + engine Boiler
Water pressure system	electrical
Owners cabin	With Duvalay fitted mattress topper
Bed length (m)	2
Wardrobe	hanging and shelves
Bathroom	en suite Bathroom and toilet in 2 separate cabins
Toilet	en suite Jabsco litflush
Toilet system	electric
Wash basin	in the bathroom
Shower	en suite In separate shower cabin



Guest cabin 1	With Duvalay fitted mattress topper
Wardrobe	hanging and shelves
Bathroom	shared
Toilet	shared
Toilet system	electric Jabsco litflush
Wash basin	in the bathroom
Shower	shared
Guest cabin 2	With Duvalay fitted mattress topper
Bed length (m)	2
Bathroom	shared
Toilet	shared
Toilet system	electric
Wash basin	in the bathroom
Shower	shared

MACHINERY

No of engines	1
Make	Volvo Penta
Type	D2-60
HP	60
kW	44.16
Fuel	diesel
Year installed	2017
Maximum speed (kn)	8,5
Cruising speed (kn)	7,5
Consumption (l/hr)	3
Engine hours	350
Engine cooling system	freshwater heat exchanger
Drive	sail-drive
Engine controls	bowden cable
Gearbox	mechanical



Bowthruster	Retractable system
Propeller type	folding
Propeller blades	3
Manual bilge pump	yes
Electric bilge pump	yes
Electrical installation	12/230
Batteries	1x 90 Ah, 2x 160 Ah AGM
Service battery	New, 2025
Bowthruster battery	Separate
Battery charger/inverter	2000 Watt
Solar panel	3x 115 Watt removable, walkable Faraday Power & Smart solar
Shorepower	with cable
Extra info	Original engine replaced after 1 year due to poor performance

NAVIGATION

Compass	Garmin
Electric compass	RC42
VHF	B&G V50
VHF handheld	B&G H50
Autopilot	B&G
Radar	B&G Broadband system 4G
Plotter	2x B&G Zeus, 9"
AIS transponder	Class B
Navigation lights	yes

EQUIPMENT

Sprayhood with grab rail	Grey, new 2023
Bimini	New 2023
Cockpit cushions	Dark grey
Cockpit table	Stainless steel with teak folding tops and LED light
Bathing platform	Folding



Boarding ladder	yes
Deck shower	Hot & cold water
Anchor	Ultra Marine, stainless steel, 21 kg
Anchor chain	100 m stainless steel
Windlass	electrical Quick with remote control
Outboard support	yes
Sea railing	wire
Railing side opening gates	yes
Life raft	Ocean Safety
Life raft (pers)	6
Last life raft survey	Needs check
Radar reflector	yes
Fenders	8x
Mooring lines	4x
TV	Samsung
Radio	Fusion, new 2025, with Fusion speakers
Cockpit speakers	yes
Speakers in salon	Fusion
Fire extinguisher	yes
Latest extinguisher survey	Needs data check
Extra info	Midships cleats

RIGGING

Rigging	sloop
Spreaders	2x
Mainsail	Lazy bag with lazy jacks
Battcars	yes
Fully battened mainsail	Elvstrom (FCL) tri-radial, washed, checked and coated 2025
Jib	Selftacking, Furlstrom, washed, checked and coated 2025
Genoa furler	Seldén
Code Zero	As new, blue



Self tacking jib installation	yes
Reefing System	slabreefing 3x reef
Backstay adjuster	yes
Boomvang	yes
Primary sheet winch	2x Lewmar 50ST EVO electric
Secondary sheet winch	2x Lewmar 50ST
Halyard winches	Dyneema
Extra info	Sails are washed, cleaned checked and coated in 2025
Extra info	Elvstrom performance package



HANSE 455



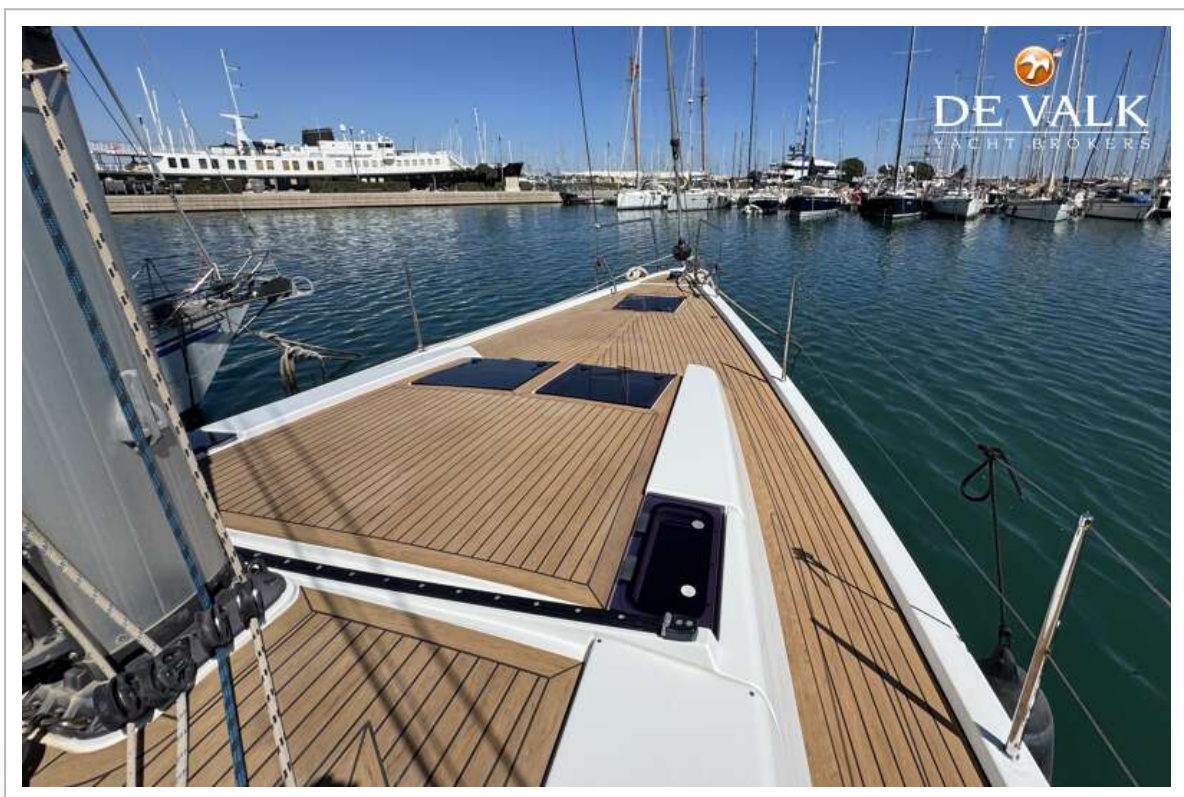
HANSE 455



HANSE 455



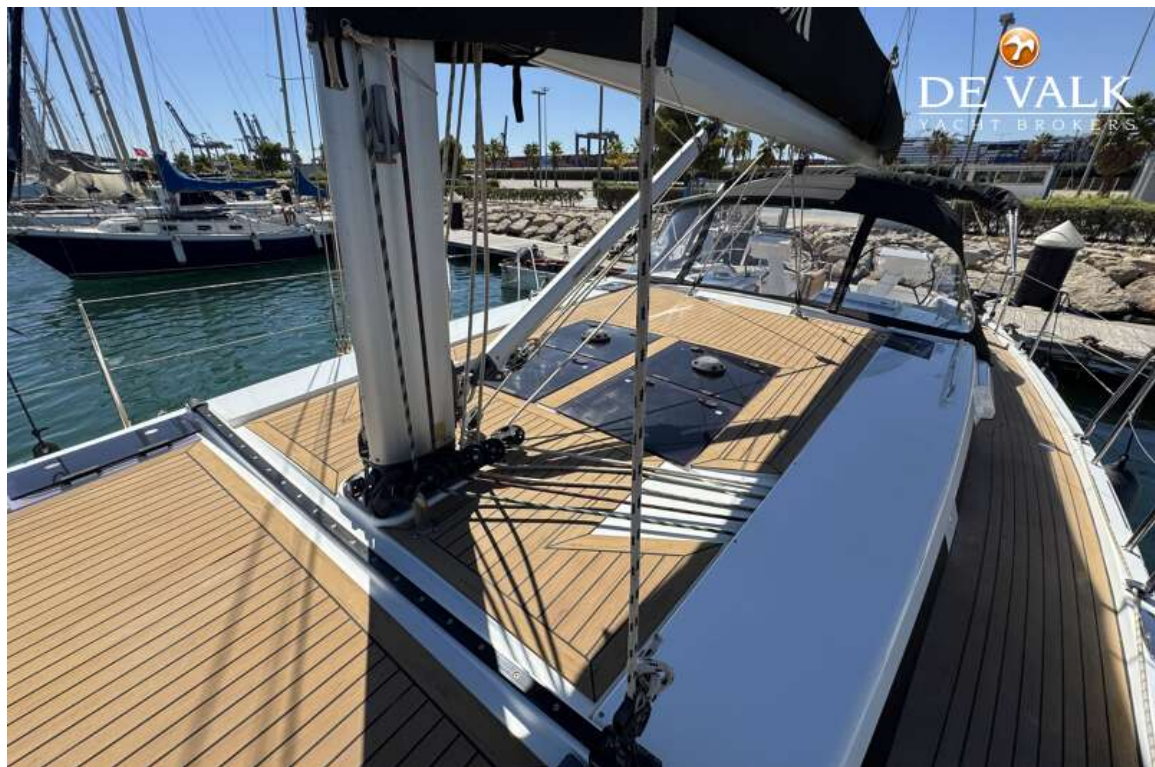
HANSE 455



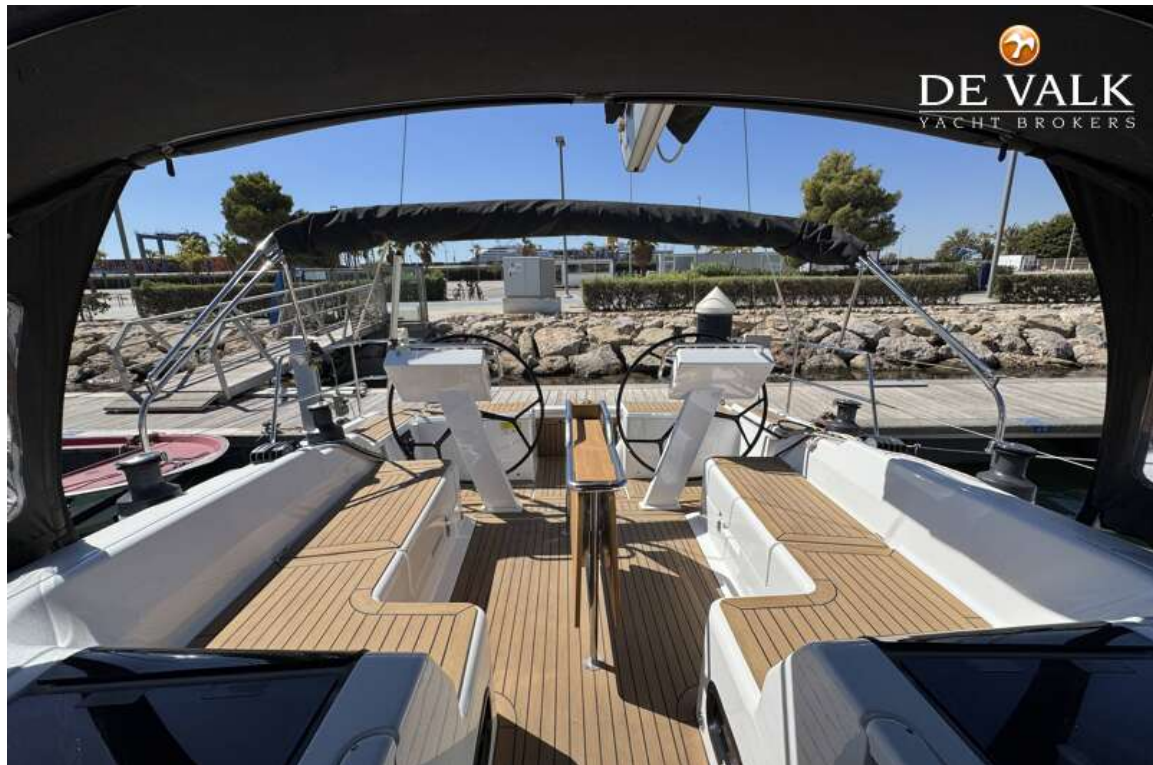
HANSE 455



HANSE 455



HANSE 455



HANSE 455



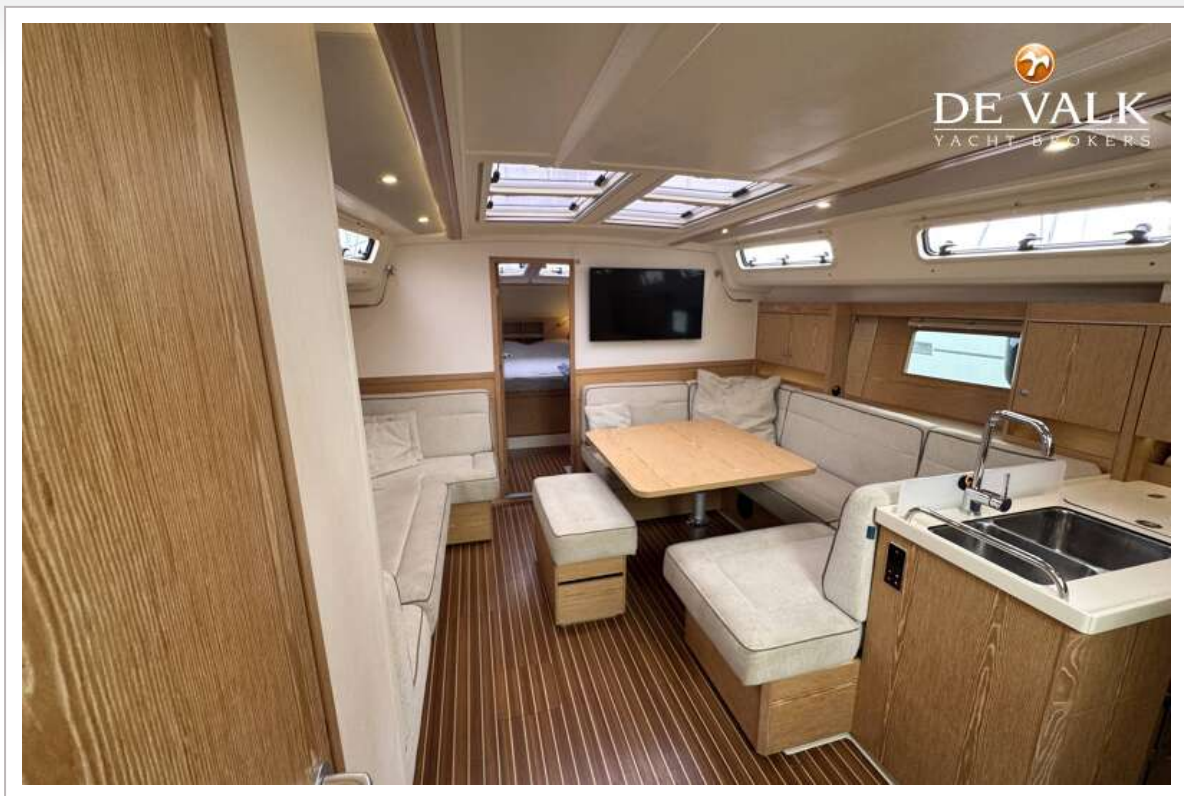
HANSE 455



HANSE 455



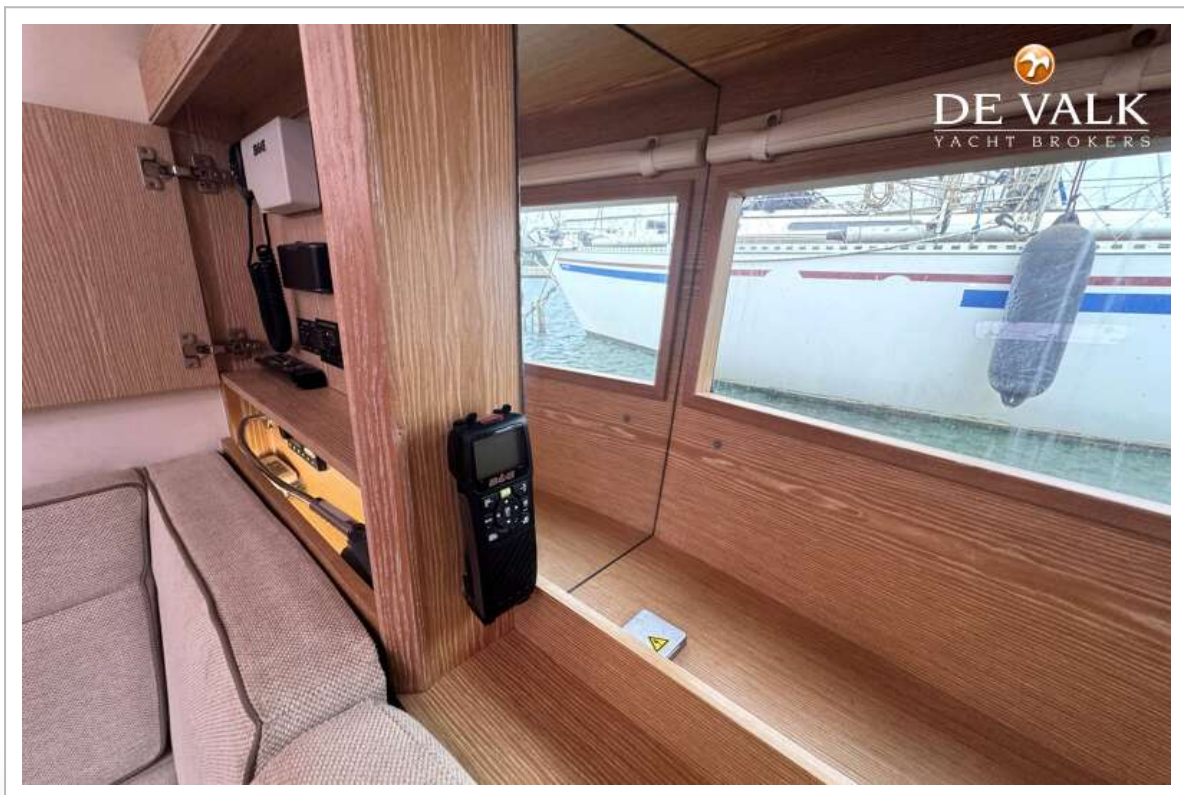
HANSE 455



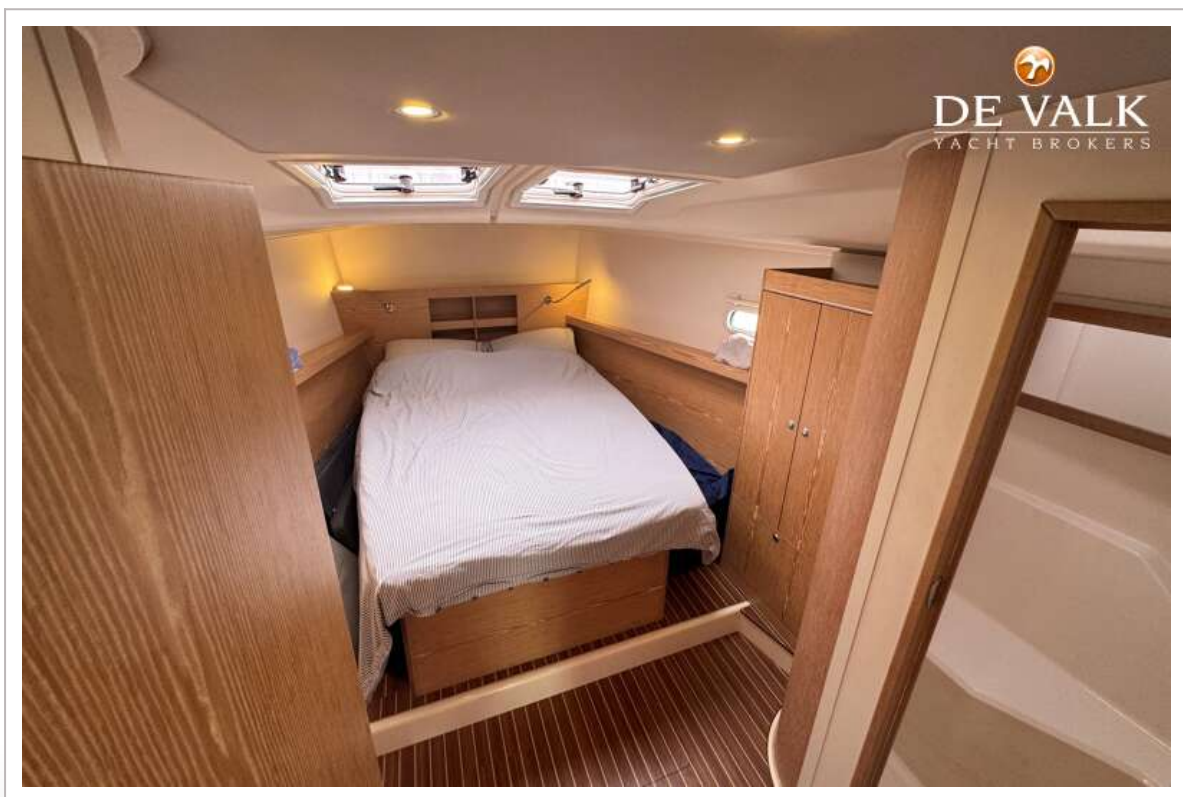
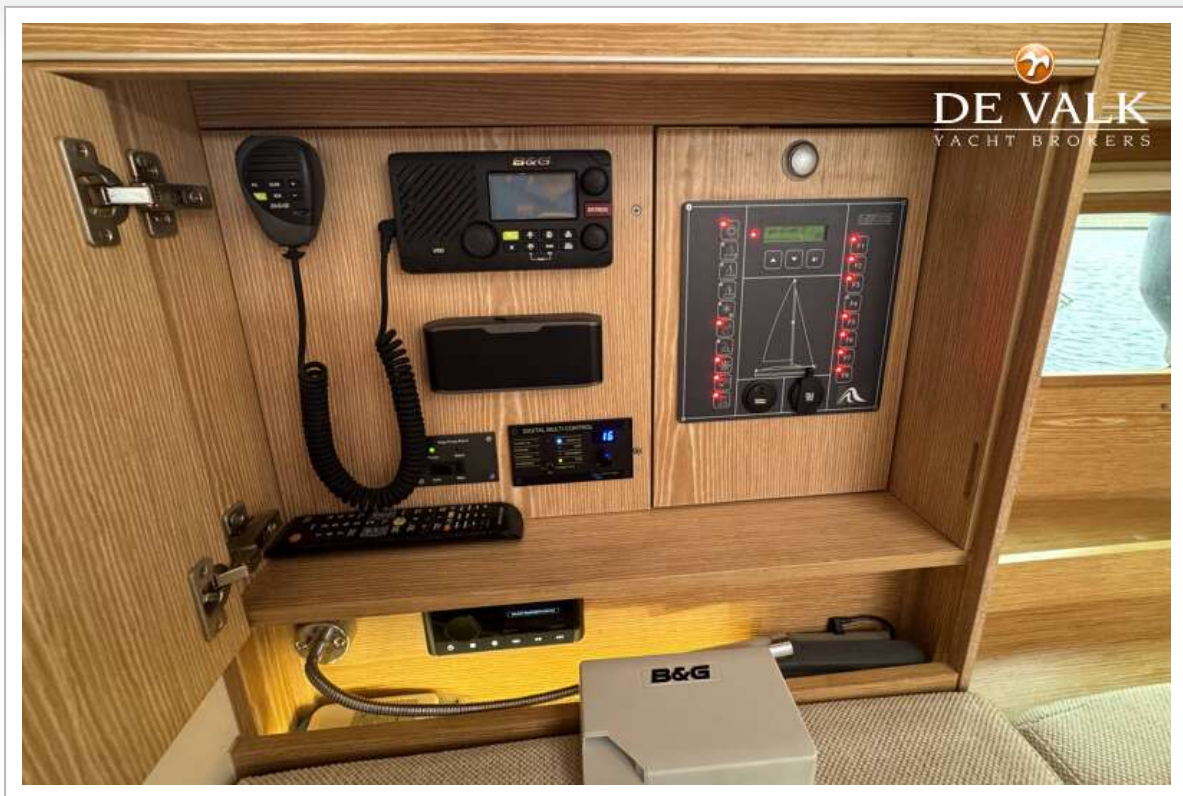
HANSE 455



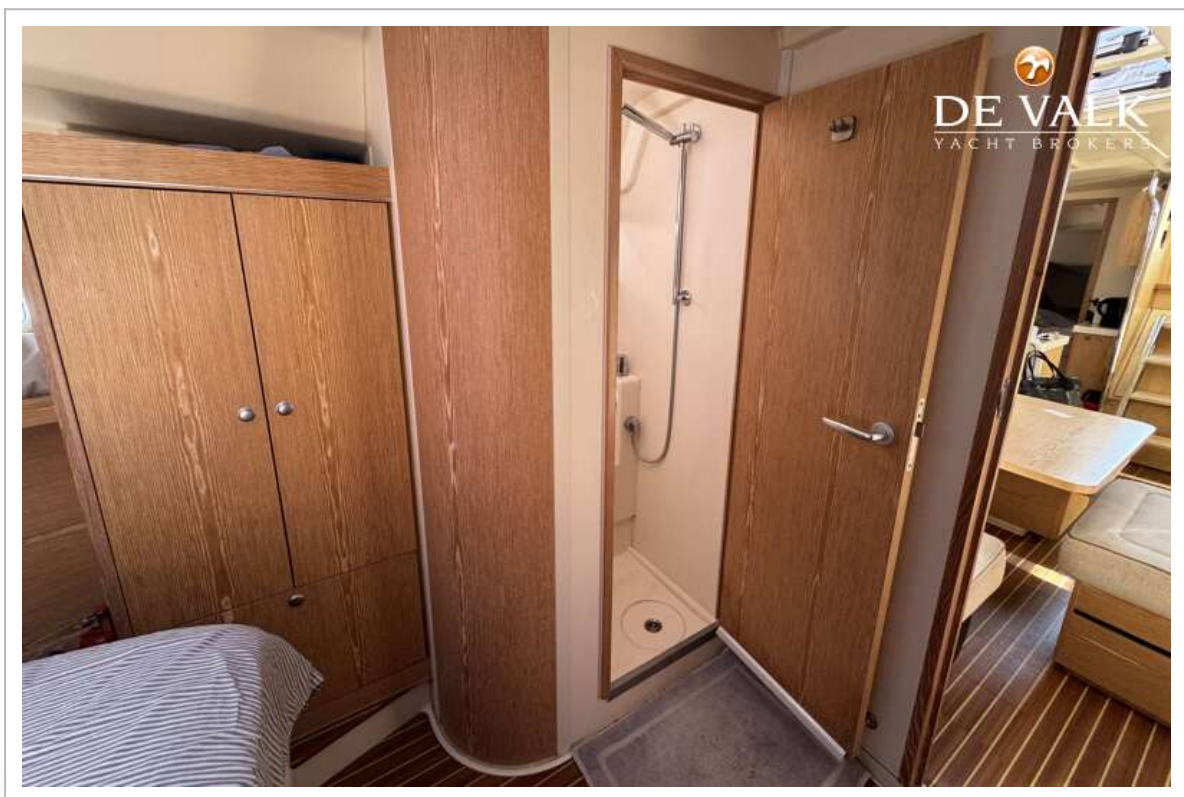
HANSE 455

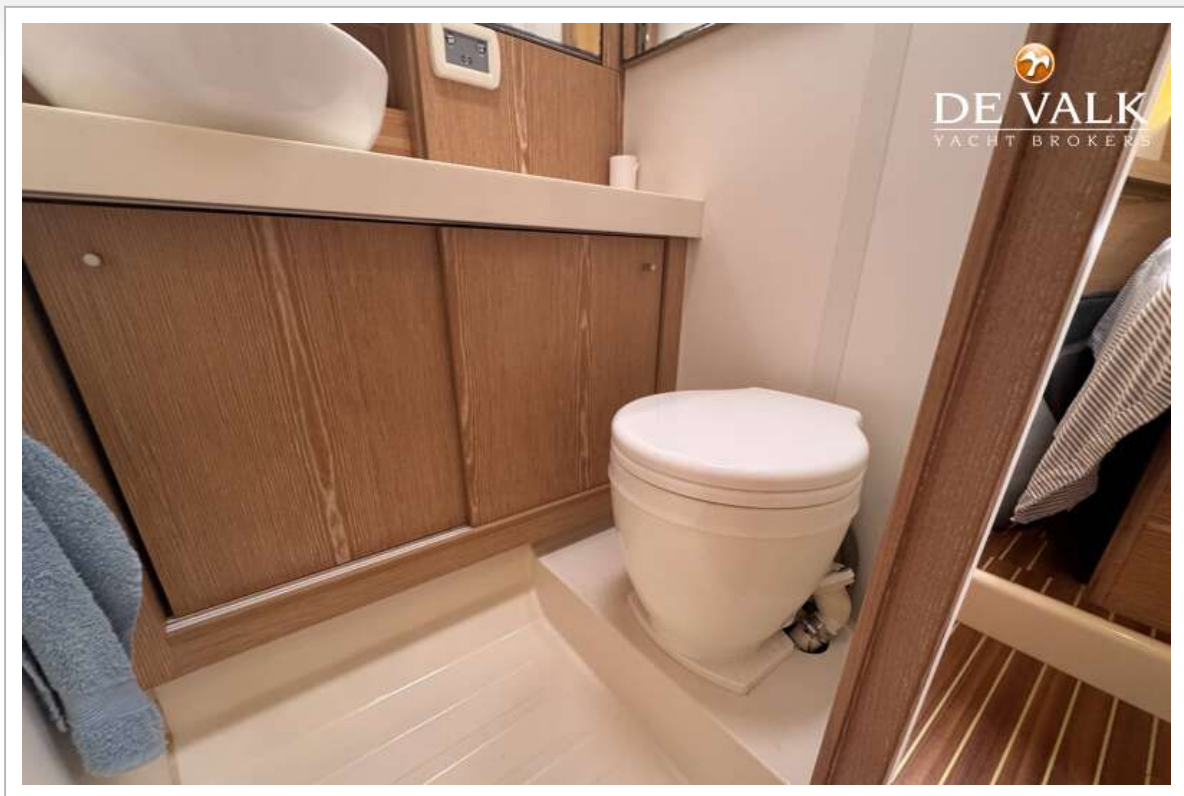


HANSE 455



HANSE 455





HANSE 455



HANSE 455



HANSE 455



HANSE 455

See Fig. 6 (General arrangement variants).

