



DE VALK
YACHT BROKERS



OVERSEAS 394



DE VALK
YACHT BROKERS

BROKER'S COMMENTS

Newly polished and splashed 26 of May. Price reduced , priced to sell. A very strong Scandinavian built boat. Very well designed with a sharp bow and round stern. Smooth in the water and equipped for comfortable ocean sailing with a small crew. High quality aspect in design, construction and gears. Large modern galley, Separate Navtable, extra high headroom. Profurl Furling boom and sails from Der Boer Sails. Long fin keel integrated in the hull. Ask for full dokumentation.

Per Engdahl

SPECIFICATIONS

Dimensions	11.98 x 3.60 x 1.95 (m)	Builder	Fliskär Varvet i Gävle
Built	2018	Cabins	2
Material	GRP	Berths	5
Engine(s)	1 x CRAFTSMAN Ltd CM 4.42 diesel	Hp/Kw	42.00 (hp), 30.91 (kw)
Asking price	€ 209.000 (VAT Paid)	Lying	

CONTACT

Sales office	De Valk Sweden	Telephone	+46 72 358 50 74
Address	385 98 Bergkvara SE	E-mail	sweden@devalk.nl

DISCLAIMER

These particulars are given in good faith as supplied but cannot be guaranteed.



GENERAL

Model	OVERSEAS 394
Type	sailing yacht
LOA (m)	11,98
Beam (m)	3,60
Draft (m)	1,95
Headroom (m)	2,10
Year built	2018
Builder	Fliskär Varvet i Gävle
Country	Sweden
Designer	Stefan Westergren/Rolf Eliasson
Displacement (t)	11
Ballast (tonnes)	4.8
CE norm	A
Hull material	GRP
Hull colour	White
Hull thickness (mm)	40 mm
Hull shape	round-bilged
Keel type	long keel Long fin keel
Superstructure material	Grp sandwich
Deck material	Grp sandwich
Deck finish	Kiwi grip
Antifouling (year)	2021 and overseen every year since
Dorades	yes
Deckhatch	yes
Portholes	yes
Insulation	20 mm
Fuel tank (litre)	150l ss316L
Level indicator (fuel tank)	yes
Freshwater tank (litre)	200l ss316L
Level indicator (freshwater)	yes



Blackwater tank (litre)	40l ss316L
Blackwater tank extraction	On deck
Wheel steering	Lewmar Cobra, enguard Cobra Crusing, leather on wheel
Emergency tiller	yes

ACCOMMODATION

Cabins	2
Berths	5
Interior	Kayha mahogany and white Dibond
Floor	18 mm Teak
Doghouse	Indoor with view all around
Headroom saloon (m)	More than two meter.
Heating	Kabola 7 kw diesel heater, water radiaters and fans.
Chart table	yes
Aft Cabin	yes
Convertible berth	Sofas in saloon work as berth
Galley	yes
Sink	yes
Cooker	yes
Oven	yes
Fridge	yes
Freezer	yes
Hot water system	yes
Water pressure system	yes
Bathroom	yes
Toilet	yes
Toilet system	Jabsco 12 v quiet fluch compact
Wash basin	yes
Shower	Separate space for shower in the head
Central vacuum cleaner	In the bow



MACHINERY

No of engines	1
Make	CRAFTSMAN Ltd
Type	CM 4.42
HP	42
kW	30.91
Fuel	diesel
Year installed	2017
Engine hours	78
Drive	shaft
Shaft seal	Craftsman
Bowthruster	Craftsman Marine
Propeller type	Ss316L 17x16
Propeller blades	3 blades
Propeller shaft material	35 mm diam
Shaft lubrication	Water cutter
Manual bilge pump	Lewmar
Electric bilge pump	Johnson
Electrical installation	yes
Batteries	4 x 110 Ah
Start battery	yes
Service battery	yes
Battery monitor	yes
Battery charger/inverter	Victron energy 12v 230 v 1600W
Shorepower	yes
Extra info	Shaft = Hydraulic reverse-Technodrive TM345A with seawater cool
Extra info	Python-Drive P30R anti-vibration clutch.

NAVIGATION

Compass	Lewmar 135 on steering pedestal
----------------	---------------------------------



Multi control display	Raymarine I70 s, analog transducer
Depth sounder/log	Raymarine I70s
Windset	yes
VHF	Raymarine Ray50
VHF handheld	Navicom RT420DSC
Autopilot	Raymarine p70s
Radar	Raymarine Quantum wifi on mast
GPS	Seataalk GPS receiver +Wesper B 8000 Ais not installed, top anten
Radar/GPS/plotter	Raymarine eS7
AIS transceiver	Wesper B 8000 not fully installed. Antenna on top.
Navigation lights	Tricolour on mast top Led Led aft lantern Anchor led lantern

EQUIPMENT

Fixed hardtop	Deck house, 360 view
Boarding ladder	yes
Bow ladder	yes
Anchor	Delta anchor 25 kg
Anchor chain	10 mm
Windlass	yes
Deck wash	yes
Grab rail (superstructure)	yes
Railing side opening gates	yes
Pushpit	yes
Pulpit	yes
Lifejackets	Automatic safety jackets
Lifebuoy	Plastimo rescue sling
Safety lines on deck	yes
Fenders	With pump
Mooring lines	yes
Radio-cd player	Fusion BB 100 stereo radio system



Sub-woofer	yes
Clock - barometer	yes
Fire extinguisher	yes
Extinguisher in engine room	Fire Pro Automatic in engineroom and battery space

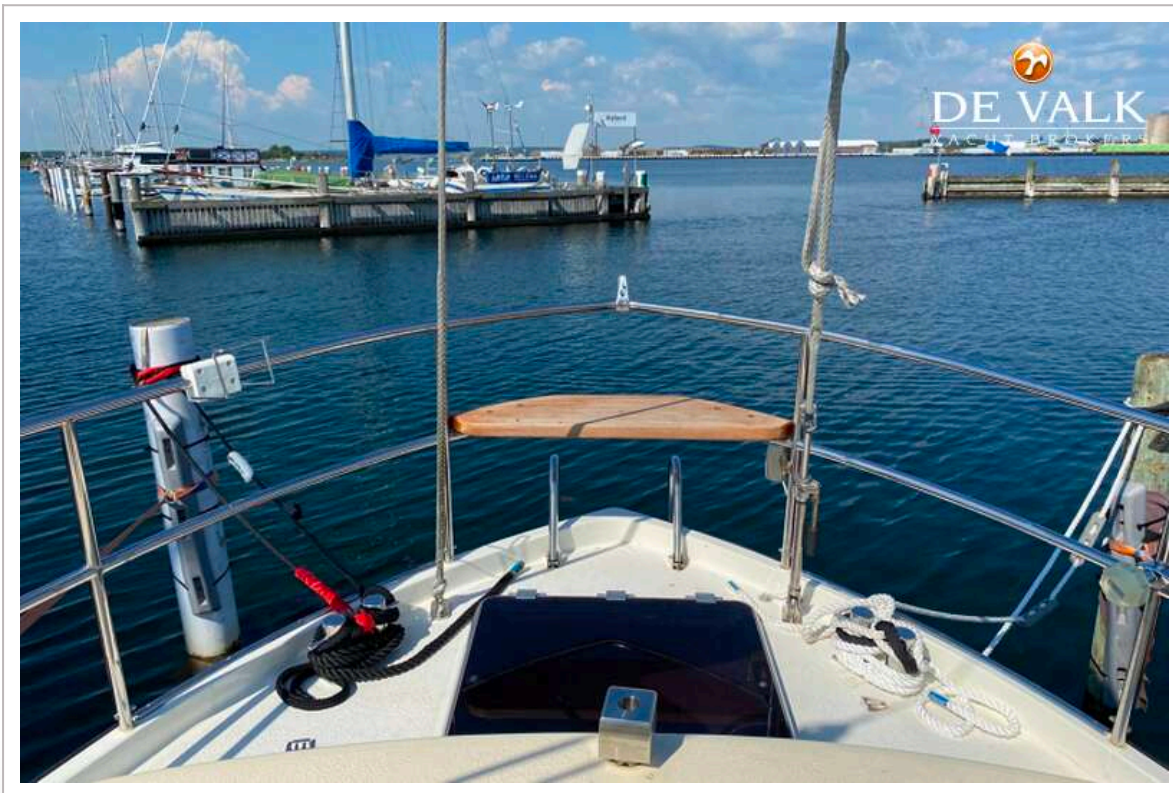
RIGGING

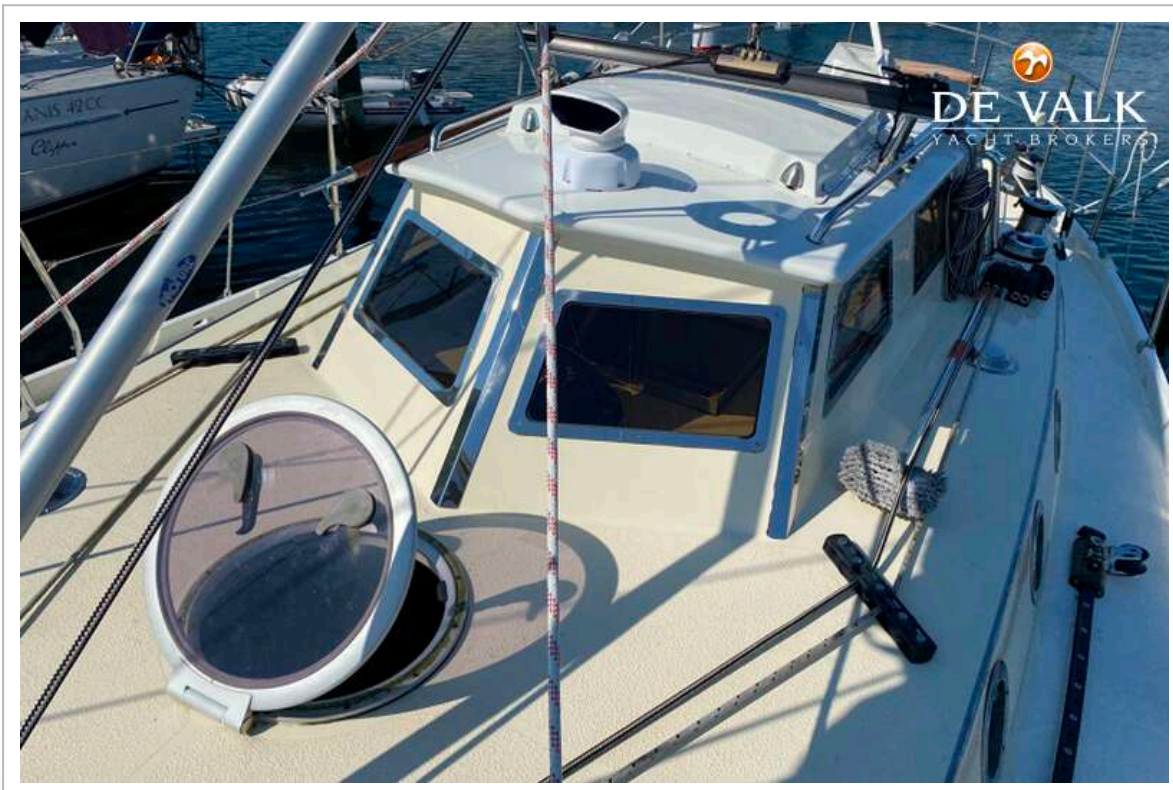
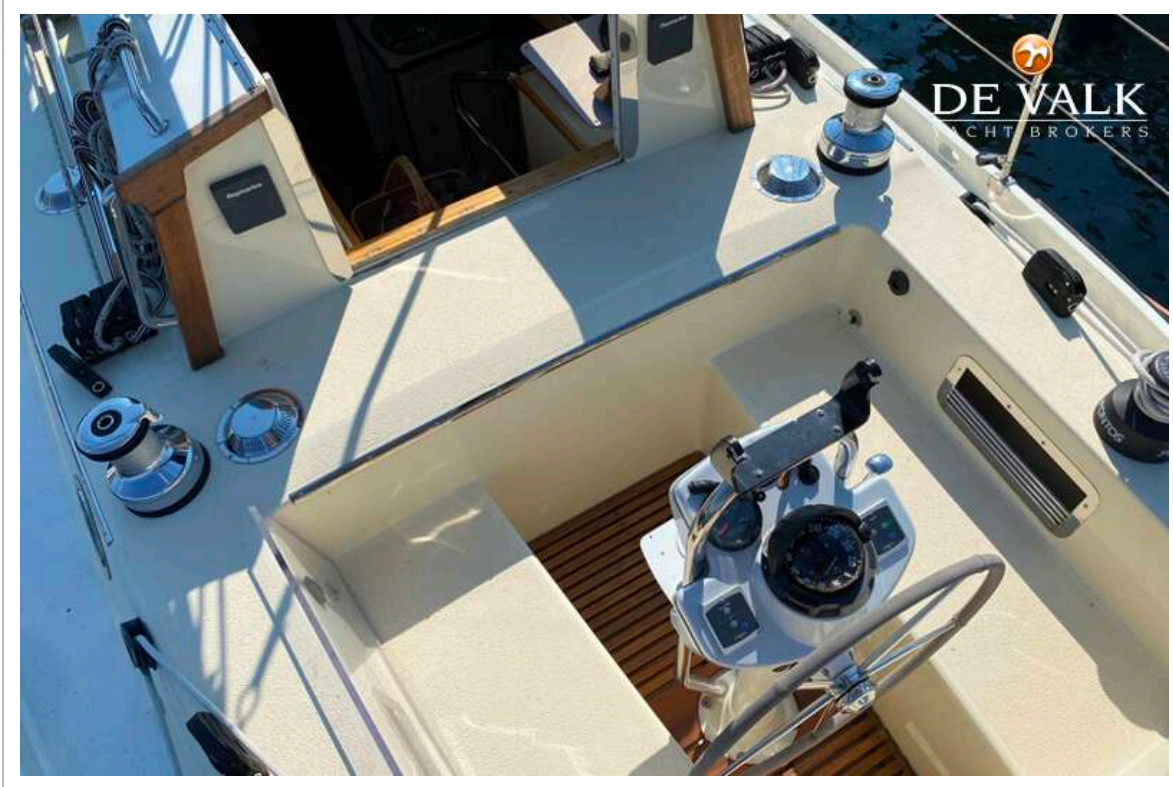
Rigging	Cutter
Standing rigging	Nieuwemast.NL
Brand mast	VMG SOROMAP YACHTING
Material mast	Aluminium
Spreaders	2 pair
Mainsail	Den Boer sails 50 m2
Mainsail cover	yes
Cutterstay	yes
Furling boom	Profurl MK3R
Jib	yes
Genoa furler	45 m2 Yankee on Harken MK4 furler
Genoa cover	yes
Cutter furler	20 m2 cutter sail on Harken MK4 furler and cover for cutter sail
Gennaker	124 m2 with sock
Yankee	yes
Reefing System	Furling boom for the mainsail
Boomvang	yes
Primary sheet winch	2 electric Lewmar evo 50
Secondary sheet winch	1 electric Lewmar evo 40
Genoa sheetwinches	2 Pontos winch trimmer 4 gear
Multifunctional winches	yes
Extra info	Boom brake, Walder 304 H

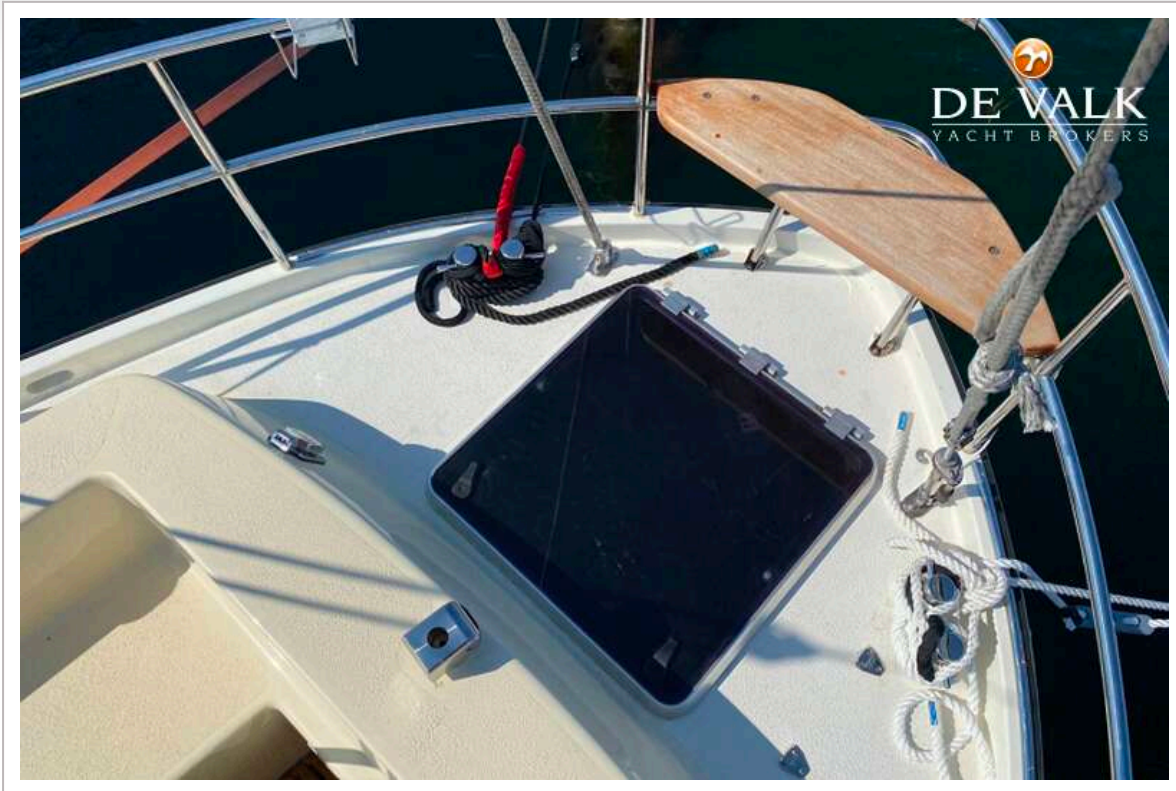


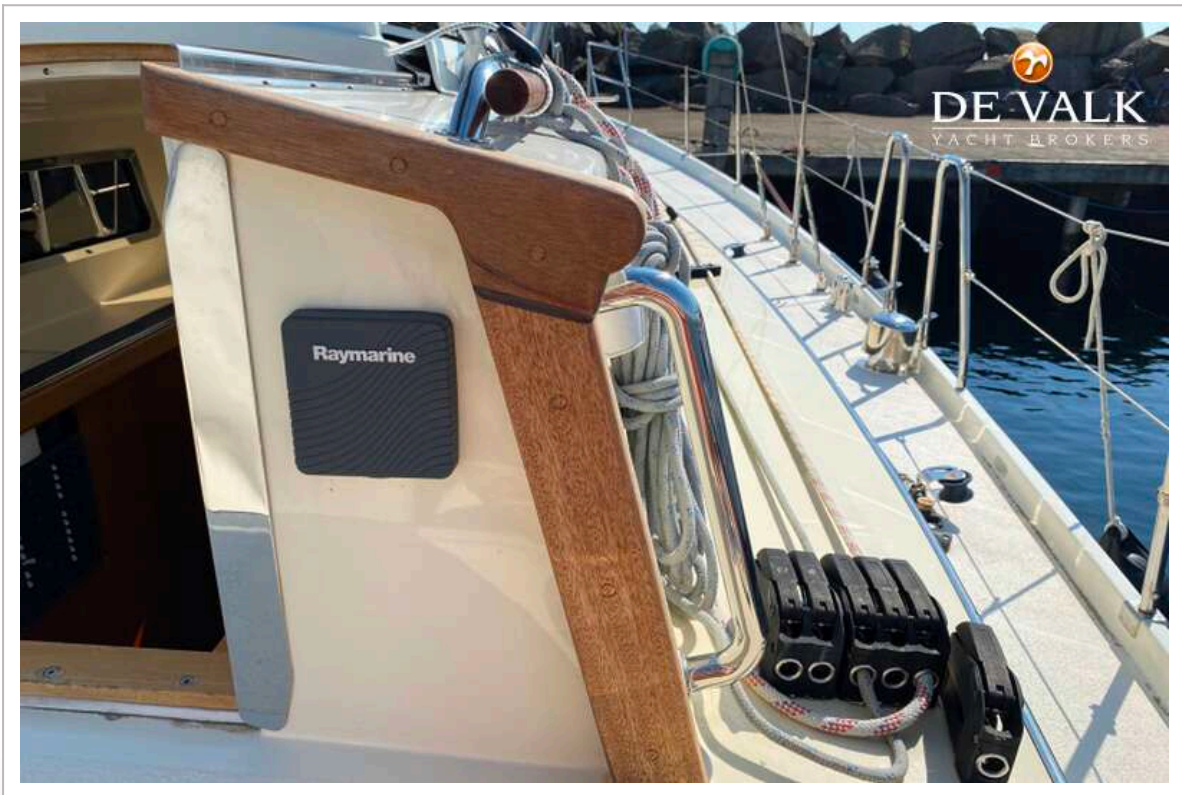




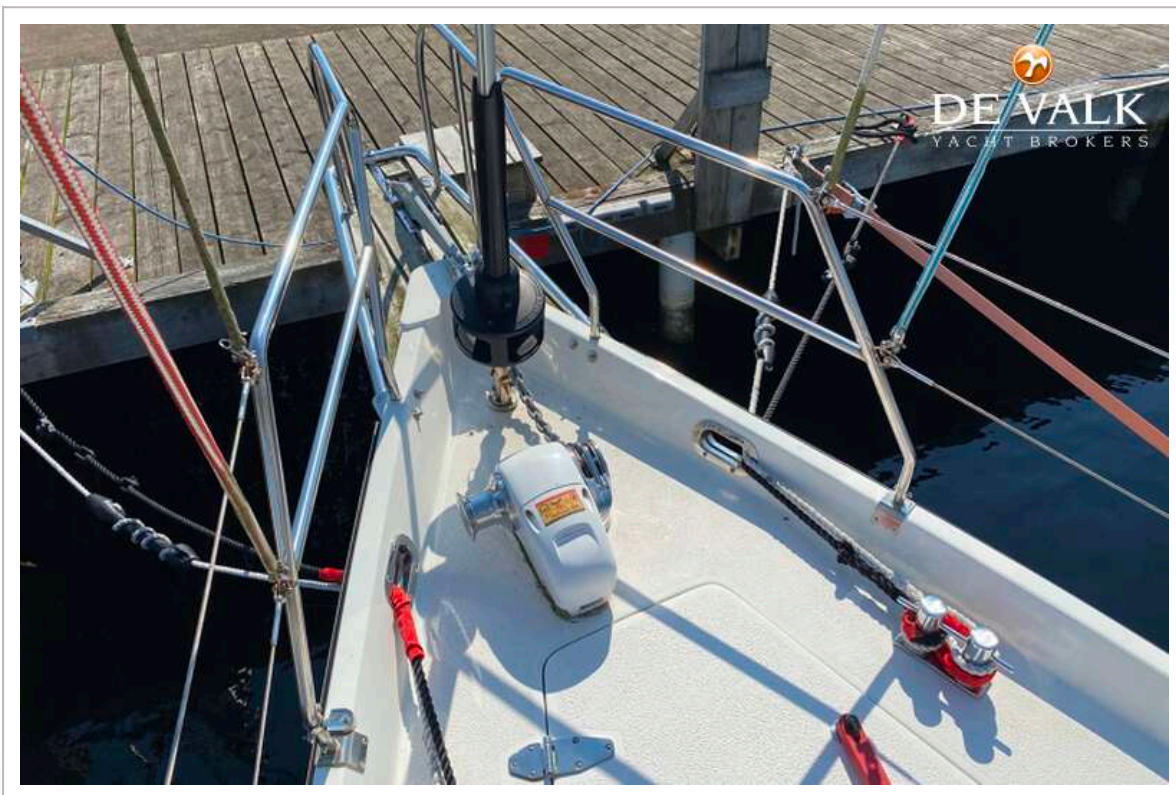


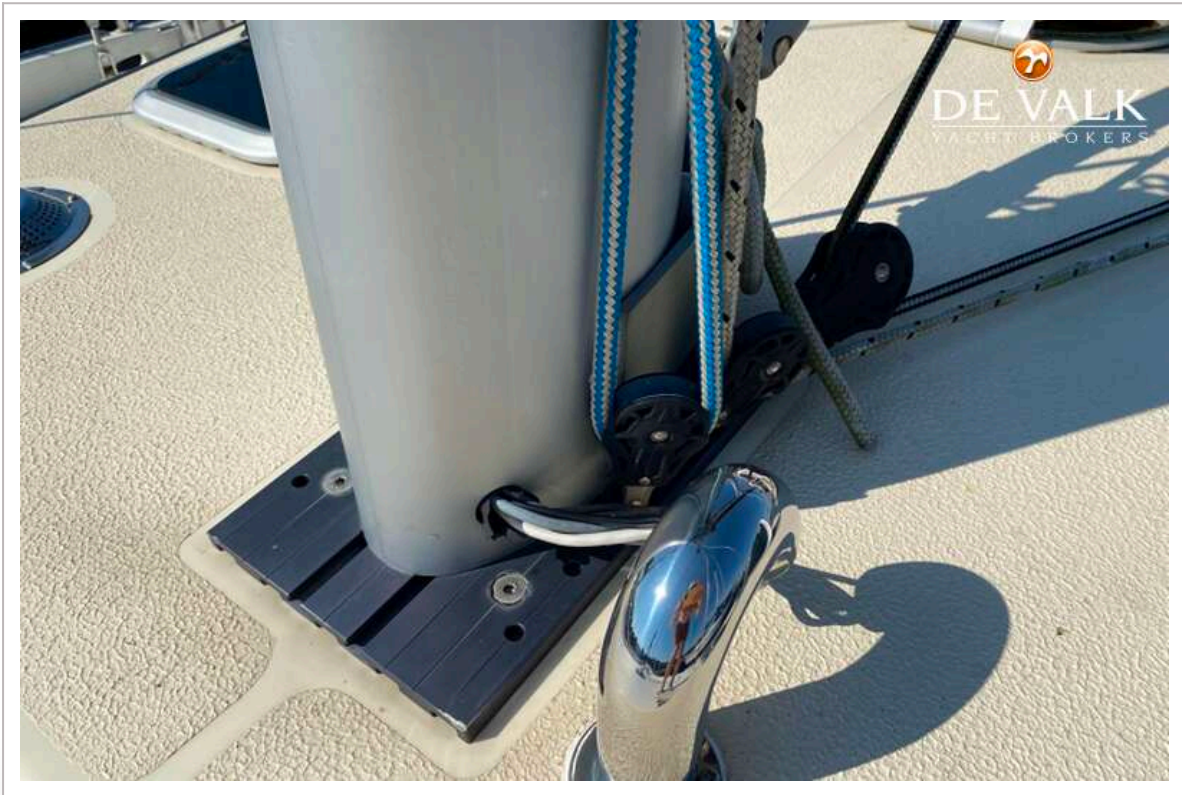
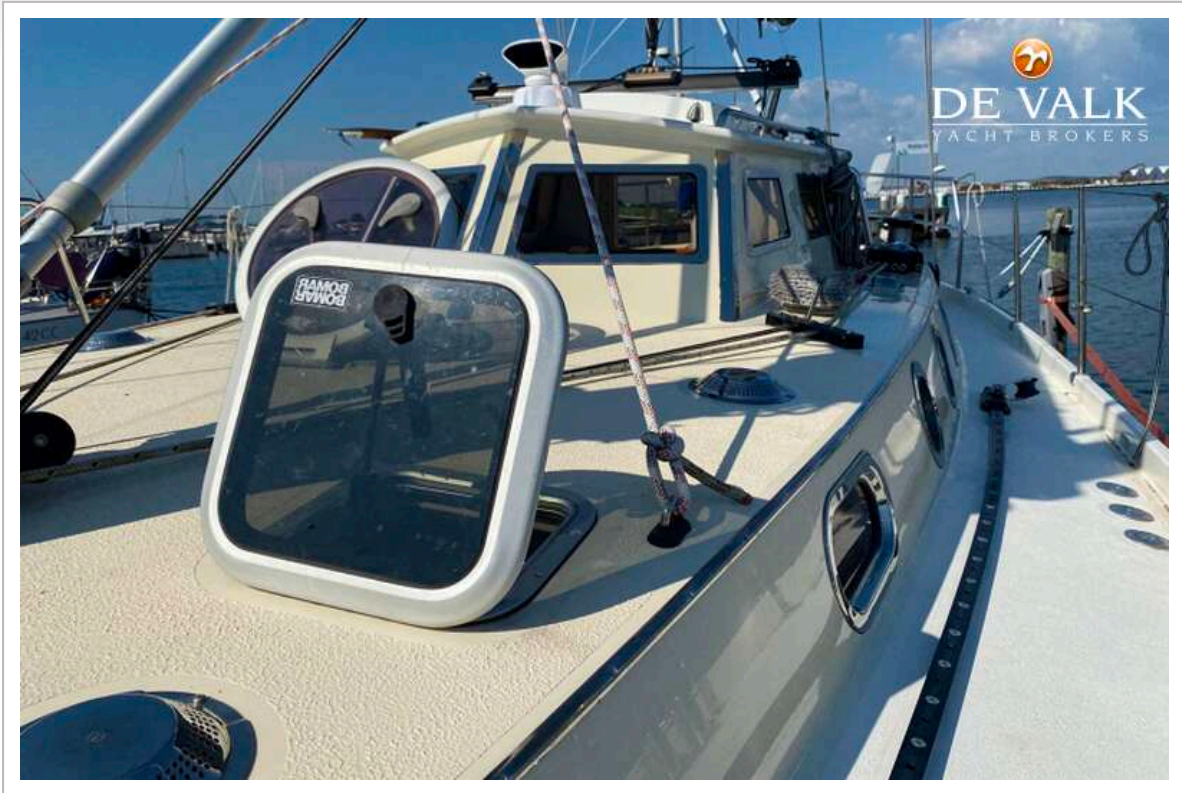




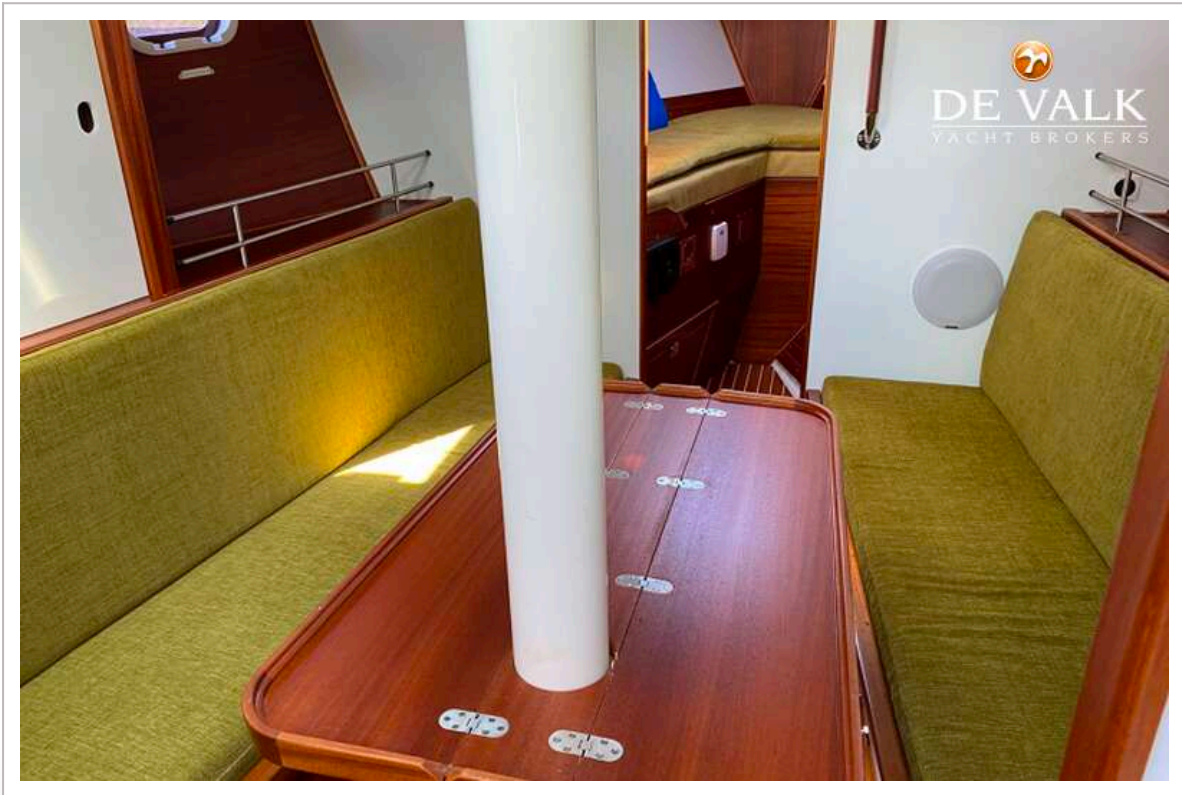
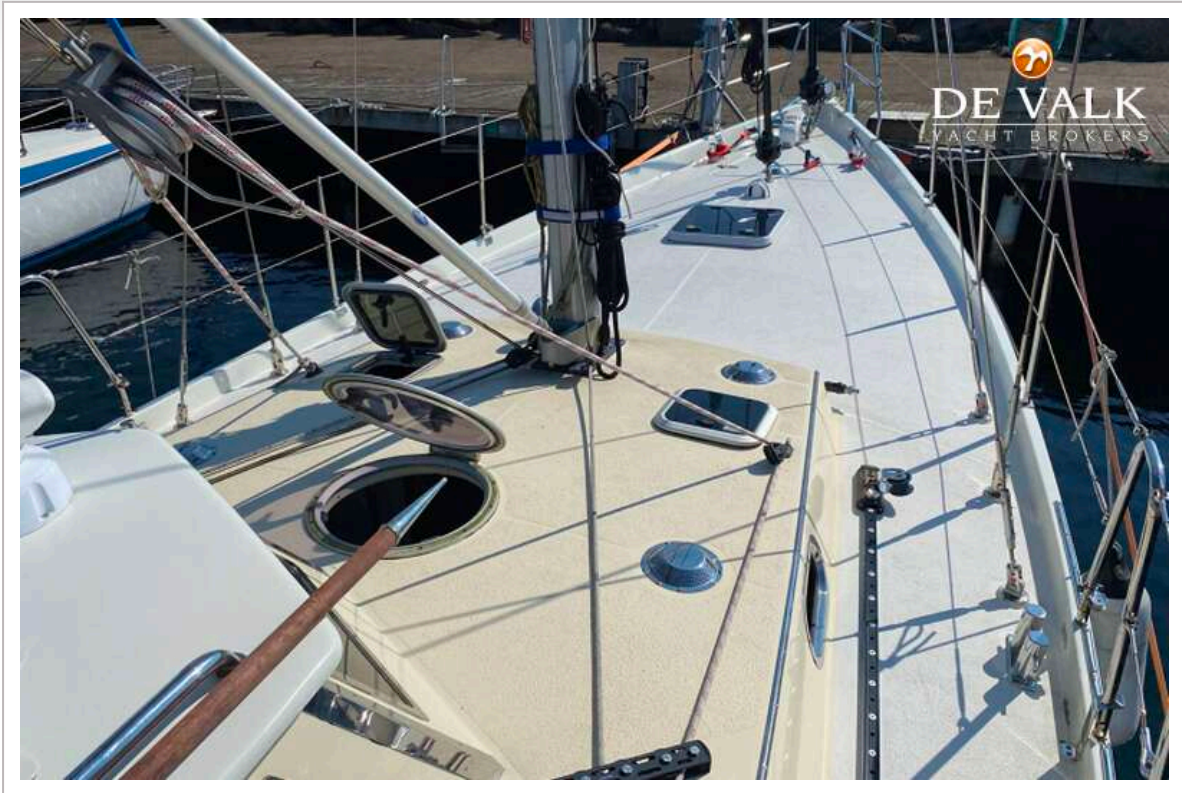




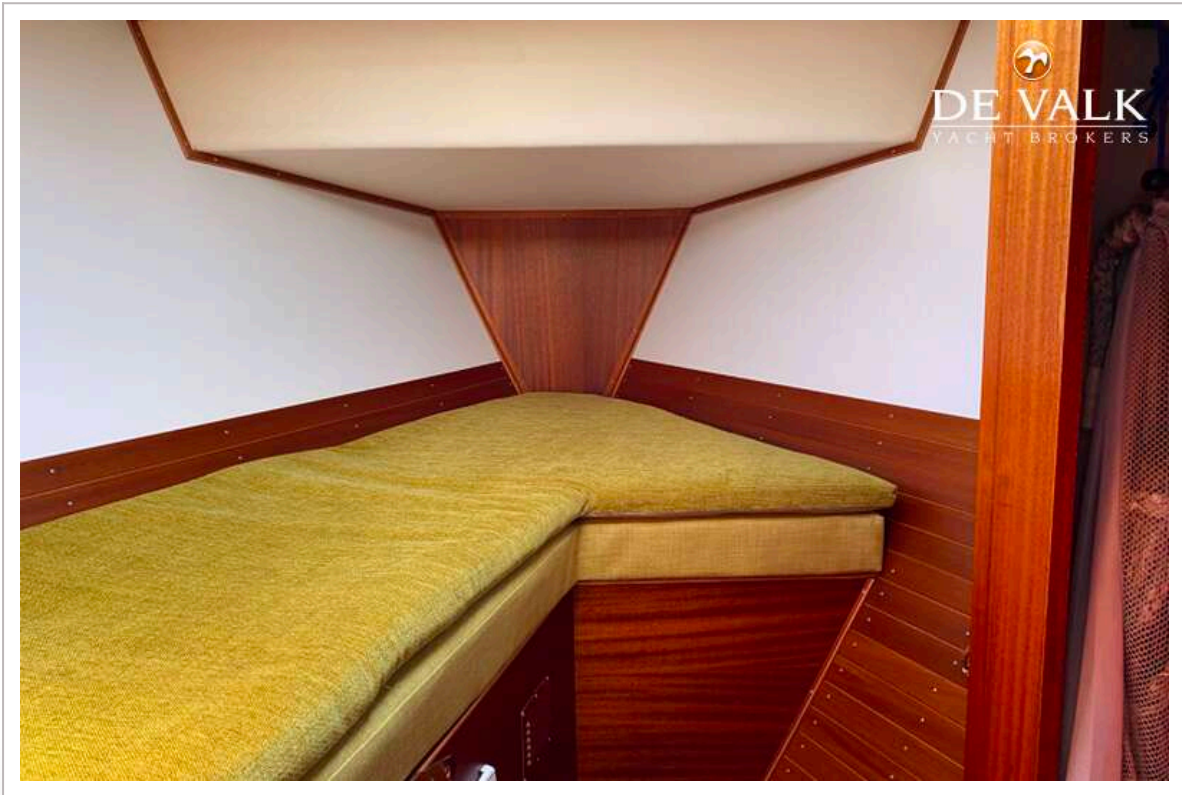
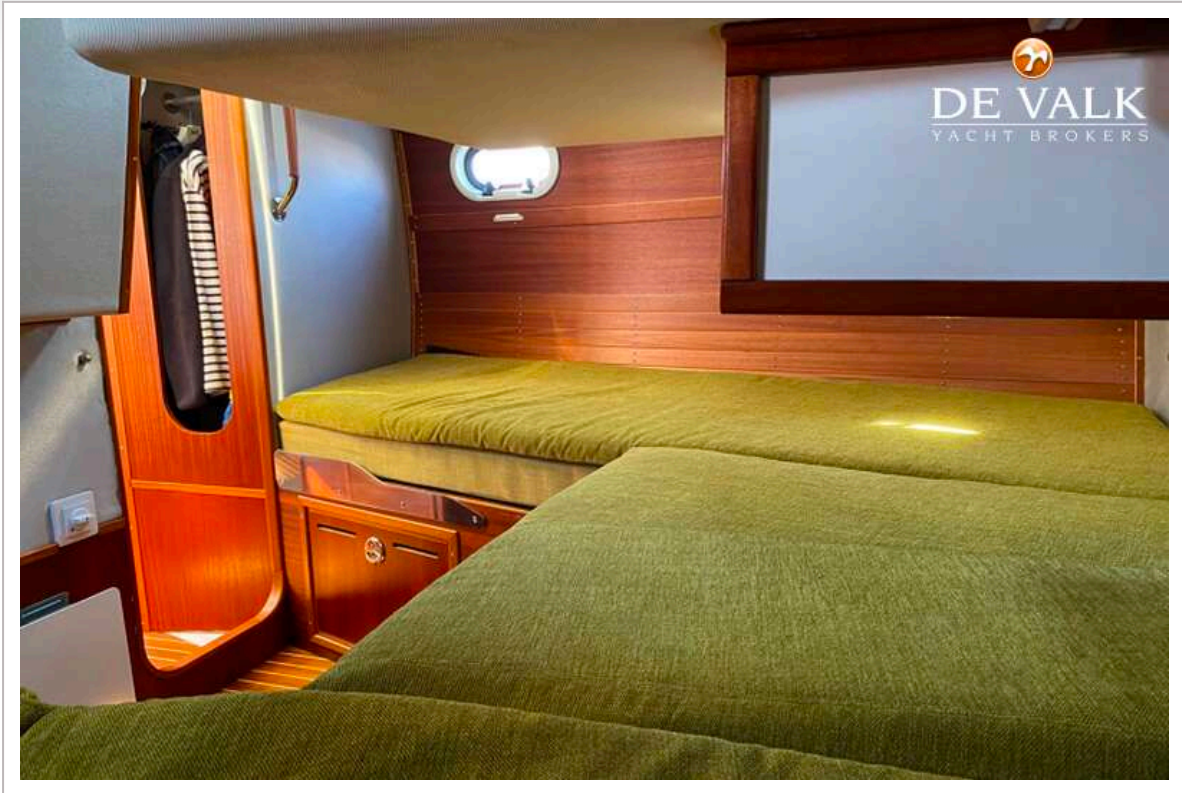




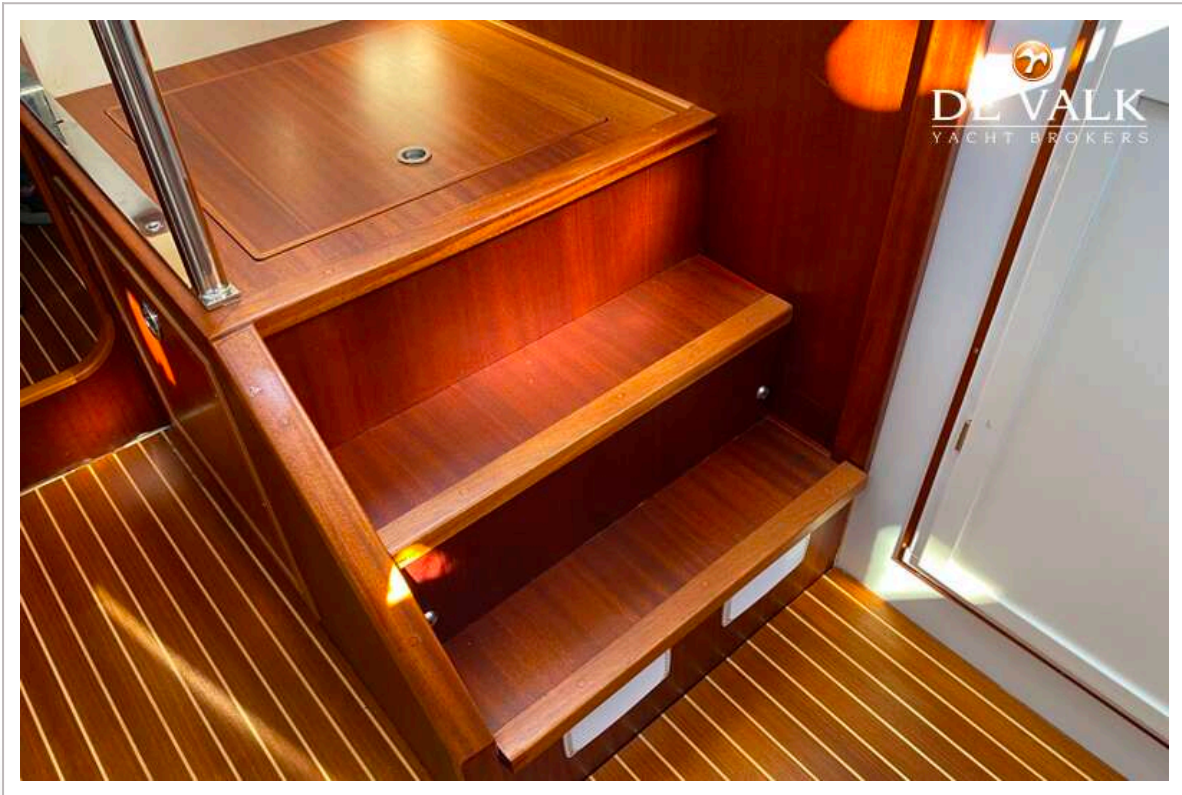
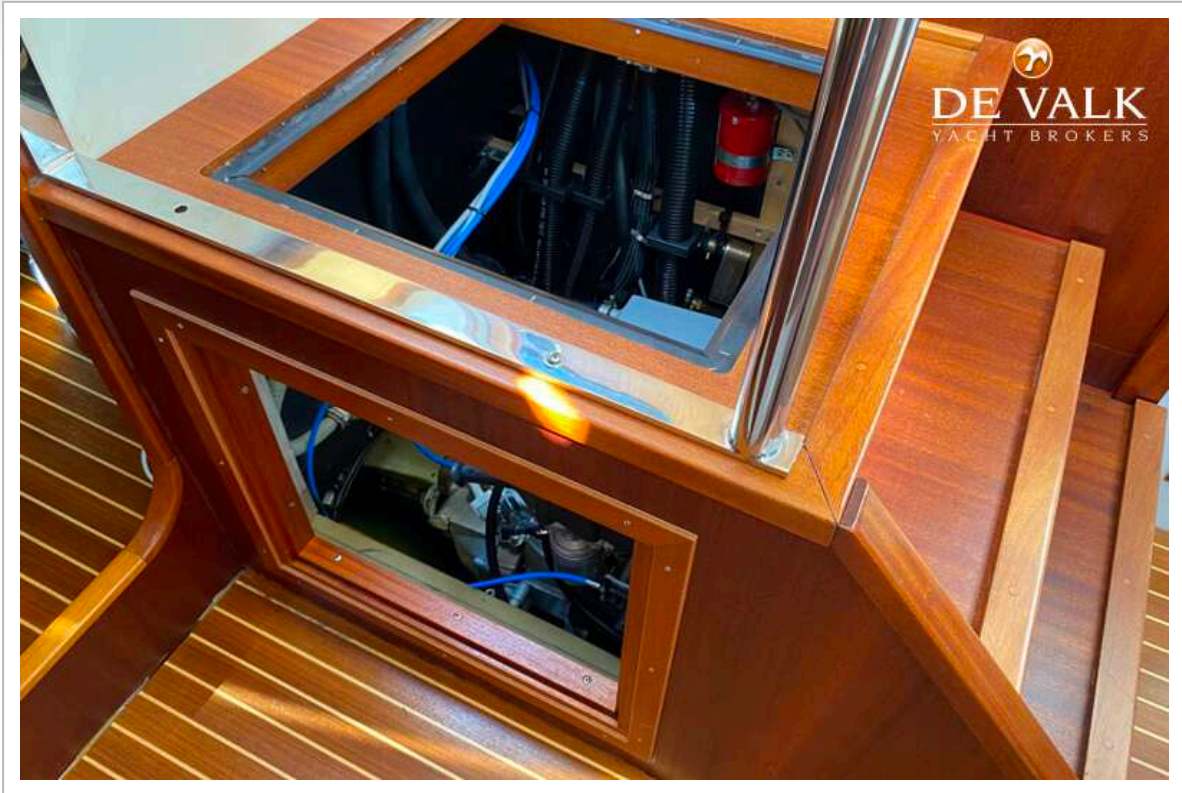
OVERSEAS 394



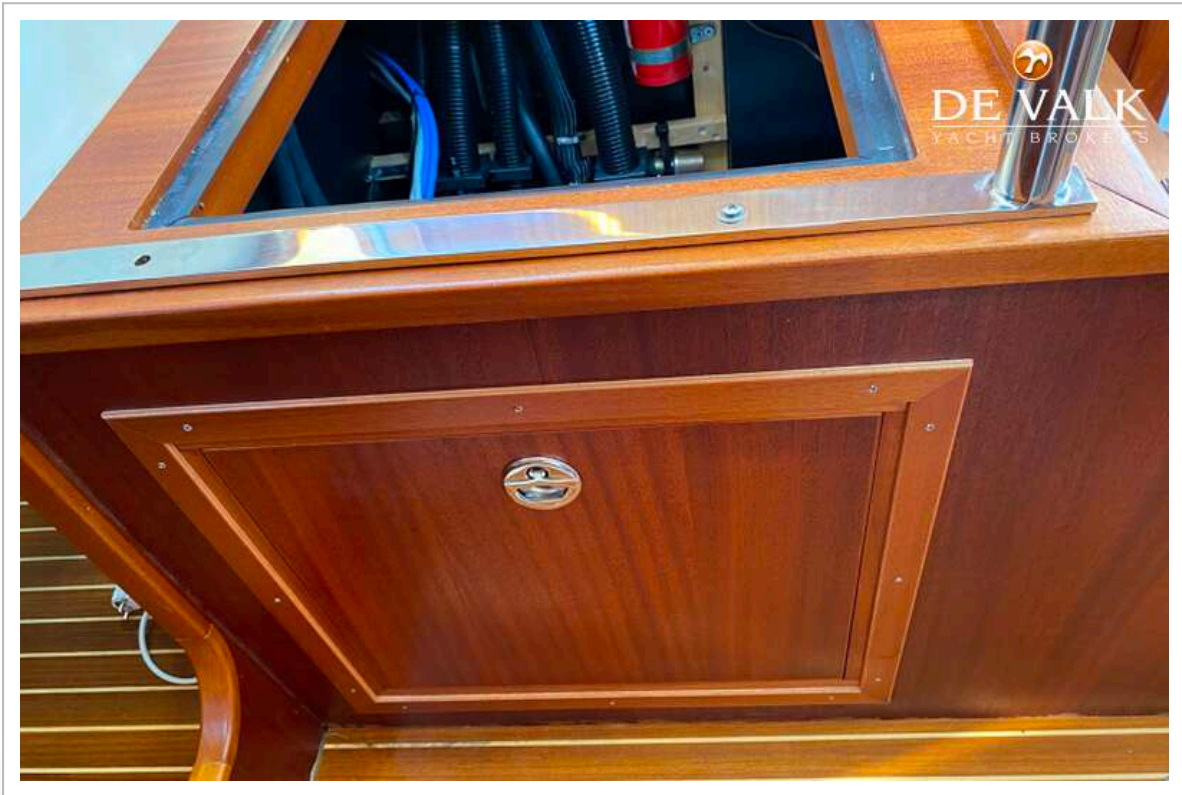
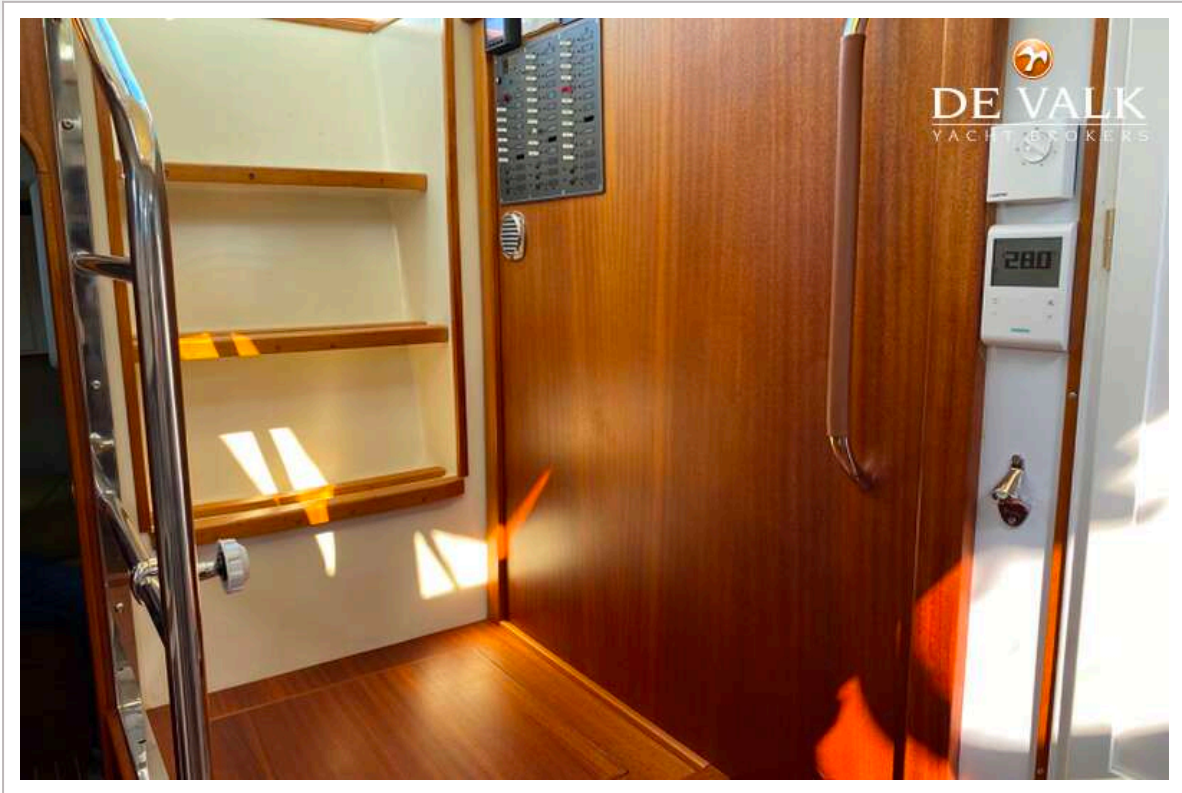
OVERSEAS 394











OVERSEAS 394



