



## WESTERLY OCEANLORD 41



# WESTERLY OCEANLORD 41

## BROKER'S COMMENTS

The Westerly Oceanlord epitomises the Westerly Yachts signature blend of durability, practicality, and classic styling. The Oceanlord 41 quickly earned a reputation for its seaworthiness, making it a trusted choice for sailors embarking on long passages. Designed by Ed Dubois, the yacht combines excellent sailing performance with a forgiving nature, making it a natural choice for seasoned blue-water cruisers.

*Sofia Iliia-Salvanou*

## SPECIFICATIONS

<b>Dimensions</b>	12.34 x 4.11 x 1.68 (m)	<b>Builder</b>	WESTERLY
<b>Built</b>	1988	<b>Cabins</b>	3
<b>Material</b>	GRP	<b>Berths</b>	7
<b>Engine(s)</b>	1 x VOLVO 2003T diesel	<b>Hp/Kw</b>	43.00 (hp), 31.65 (kw)
<b>Asking price</b>	€ 55.000 (VAT Paid)	<b>Lying</b>	elsewhere / Not at sales office

## CONTACT

<b>Sales office</b>	De Valk Corfu	<b>Telephone</b>	(+30) 266 111 8095
<b>Address</b>	New Port of Corfu, near Gouvia Marina 490 83 Corfu GR	<b>E-mail</b>	corfu@devalk.nl

## DISCLAIMER

These particulars are given in good faith as supplied but cannot be guaranteed.



# WESTERLY OCEANLORD 41

## GENERAL

Model	WESTERLY OCEANLORD 41
Type	sailing yacht
LOA (m)	12,34
LWL (m)	10,74
Beam (m)	4,11
Draft (m)	1,68
Headroom (m)	1,75
Year built	1988
Builder	WESTERLY
Country	United Kingdom
Designer	ED DUBOIS
Displacement (t)	9,47
Hull material	GRP
Hull colour	white
Hull shape	full bilged
Keel type	fin keel
Superstructure material	GRP
Rubbing strake	wood
Deck material	GRP
Deck finish	Treadmaster
Superstructure deck finish	Treadmaster
Cockpit deck finish	teak
Antifouling (year)	2025
Window frame	aluminium
Window material	glass
Deckhatch	yes
Insulation	foam
Mast can be lowered	NO
Fuel tank (litre)	stainless steel 204,5
Level indicator (fuel tank)	yes



# WESTERLY OCEANLORD 41

Freshwater tank (litre)	stainless steel 500
Level indicator (freshwater)	yes
Wheel steering	cable steering
Outside helm position	cable steering
Emergency tiller	yes

## ACCOMMODATION

Cabins	3
Berths	7
Interior	teak
Floor	teak and holly New 2025
Saloon	yes
Headroom saloon (m)	1,9
Heating	diesel ducted hot air WEBASTO but not working
Navigation center	yes
Chart table	yes
Aft Cabin	yes
Dinette	yes
Dinette to convert into berth	yes
Galley	yes
Countertop	Ceramic tiles
Sink	stainless steel
Cooker	calor gas Force 10
Oven	yes
Fridge	yes
Hot water system	220V + engine
Water pressure system	electrical
Kettle	yes
Coffee maker	yes
Crockery	yes
Owners cabin	double bed



# WESTERLY OCEANLORD 41

Bed length (m)	2m
Wardrobe	hanging/drawers/shelves
Bathroom	en suite
Toilet	en suite
Toilet system	manual
Wash basin	in the bathroom
Shower	en suite
Guest cabin 1	v-bed
Bed length (m)	2m
Wardrobe	hanging/drawers/shelves
Bathroom	separate
Toilet	separate
Toilet system	manual
Wash basin	in the bathroom
Shower	separate
Guest cabin 2	single bed
Bed length (m)	2m
Bathroom	separate
Toilet	separate
Toilet system	manual
Wash basin	in the bathroom
Shower	separate

## MACHINERY

No of engines	1
Make	VOLVO
Type	2003T
HP	43
kW	31.65
Fuel	diesel
Year installed	1988



# WESTERLY OCEANLORD 41

Year of overhaul	2000
Maximum speed (kn)	7
Cruising speed (kn)	6
Range (nm)	300
Drive	shaft
Shaft seal	yes
Engine controls	bowden cable
Gearbox	mechanical
Engine controls	bowden cable
Gearbox	mechanical
Exhaust	watercooled
Propeller type	fixed
Propeller shaft material	stainless steel
Shaft lubrication	water
Manual bilge pump	yes
Electric bilge pump	yes
Generator	Stands alone, 1 Kva, needs service
Batteries	yes
Start battery	yes
Service battery	3 x 100 amp
Battery monitor	yes
Battery charger	yes
Inverter	yes
Solar panel	X2 x 280 w
Shorepower	with cable

## NAVIGATION

Compass	yes
Depth sounder	yes
Log	yes
VHF	yes



VHF handheld	yes
Autopilot	yes
Radar	yes
GPS	yes
Navtex	yes
AIS transponder	yes
Radio receiver	yes
EPIRB	yes
Navigation lights	yes
Searchlight	yes

## EQUIPMENT

Fixed windscreen	yes
Sprayhood	yes
Bimini	yes
Winter cover	yes
Cockpit cushions	X 2
Cockpit table	yes
Bow ladder	yes
Anchor	Rocna 25 Kg Manson supreme
Anchor chain	70 m x 10 mm
Anchor 2	Danforth
Anchor chain	50 m x 8 mm
Windlass	electrical
Dinghy	inflatable Ribeye
Outboard	Epropulsion
Outboard support	yes
Davits	stainless steel
Davits controls	manual
Deck crane	manual
Sea railing	wire



Grab rail (superstructure)	teak
Pushpit	yes
Pulpit	yes
Life raft	container
Lifejackets	yes
Safety lines on deck	yes
Rope cutter	yes
Horn	air pressure
Fenders	yes
Mooring lines	yes
Cockpit speakers	yes
Fire extinguisher	yes

## RIGGING

Rigging	sloop
Standing rigging	wire
Brand mast	Kemp
Material mast	aluminium
Spreaders	yes
Mainsail	yes
Mainsail cover	yes
Fully battened mainsail	yes
Genoa	yes
Genoa furler	yes
Genoa cover	yes
Spinnaker	yes
Reefing System	slabreefing
Backstay adjuster	mechanical
Boomvang	mechanical
Primary sheet winch	yes
Halyard winches	yes





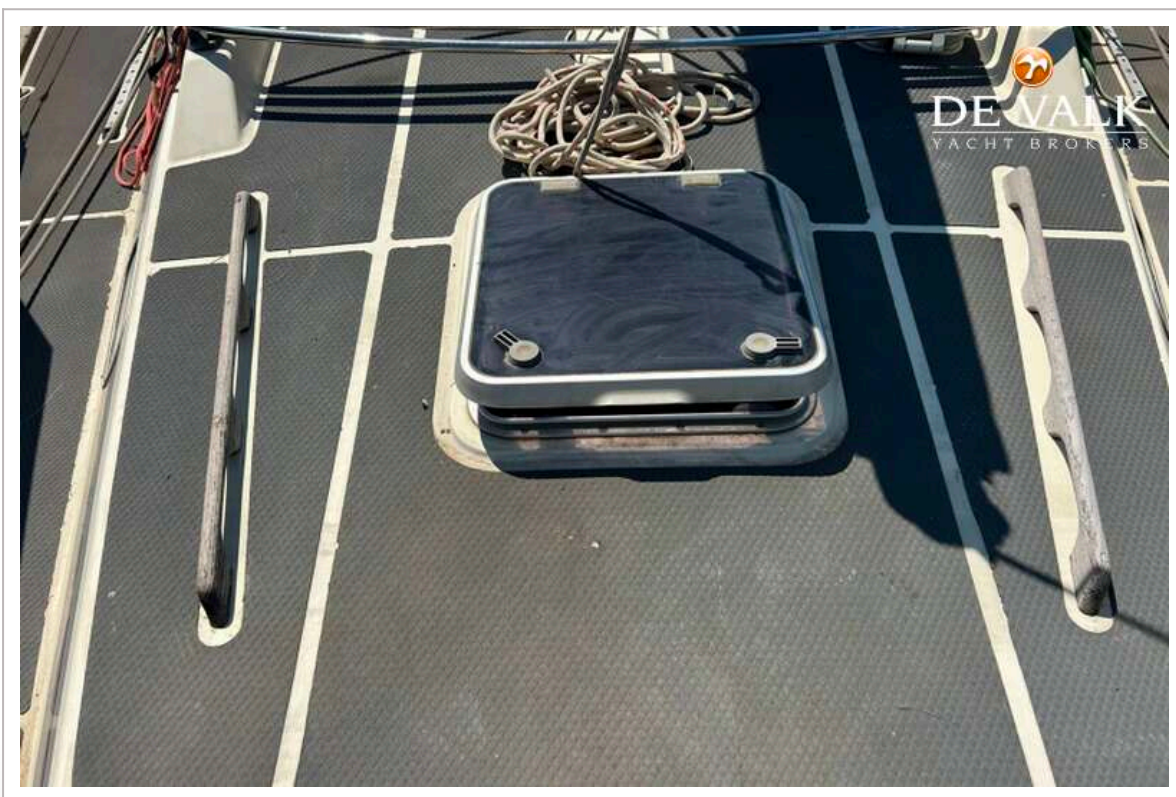


# WESTERLY OCEANLORD 41



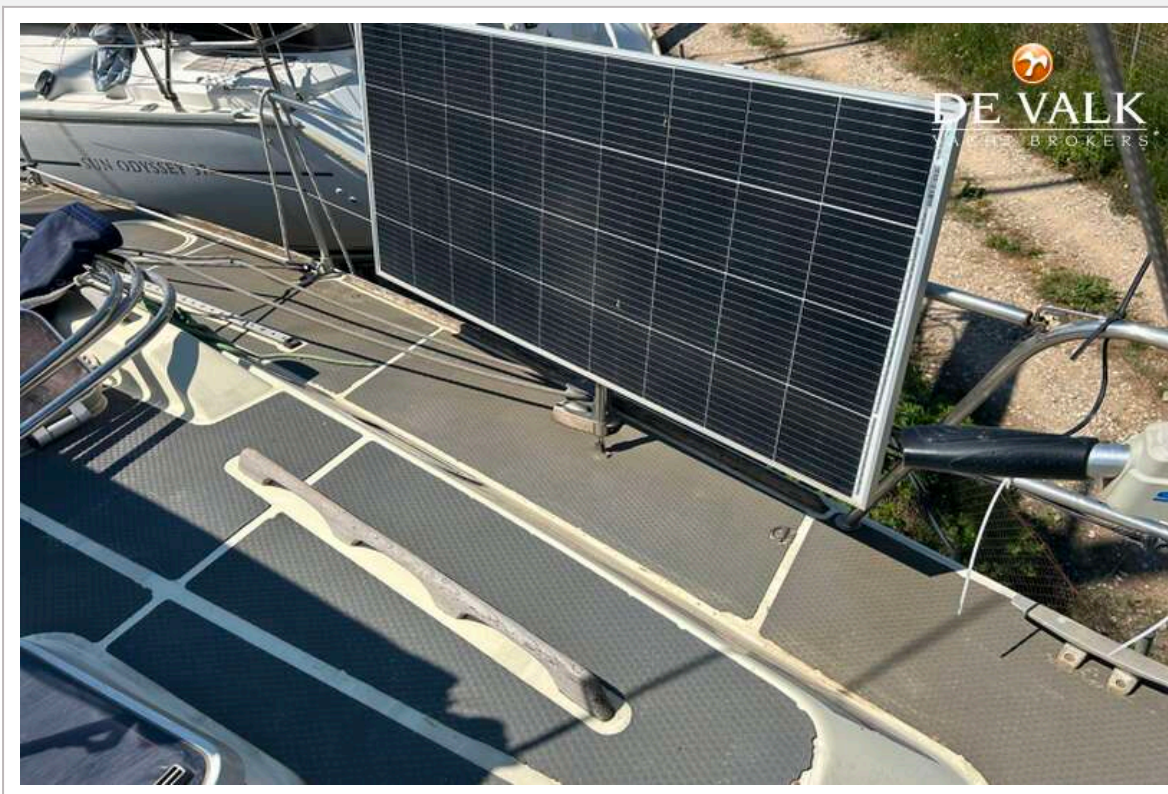


# WESTERLY OCEANLORD 41



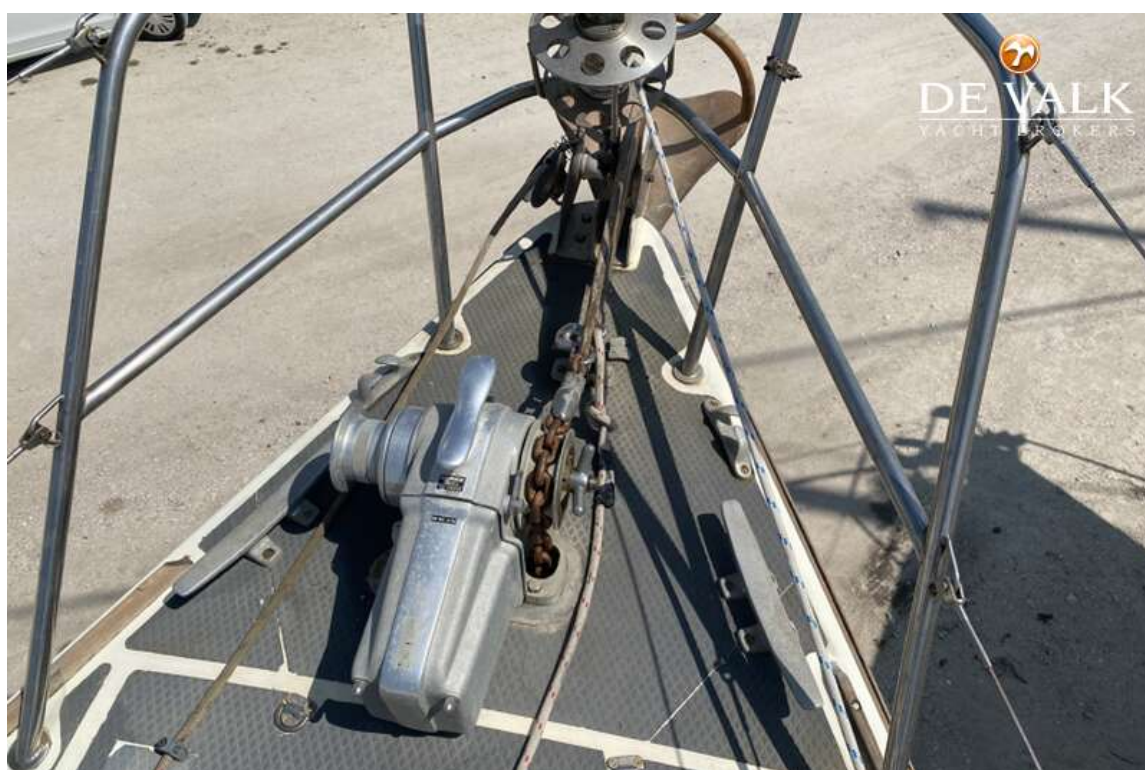
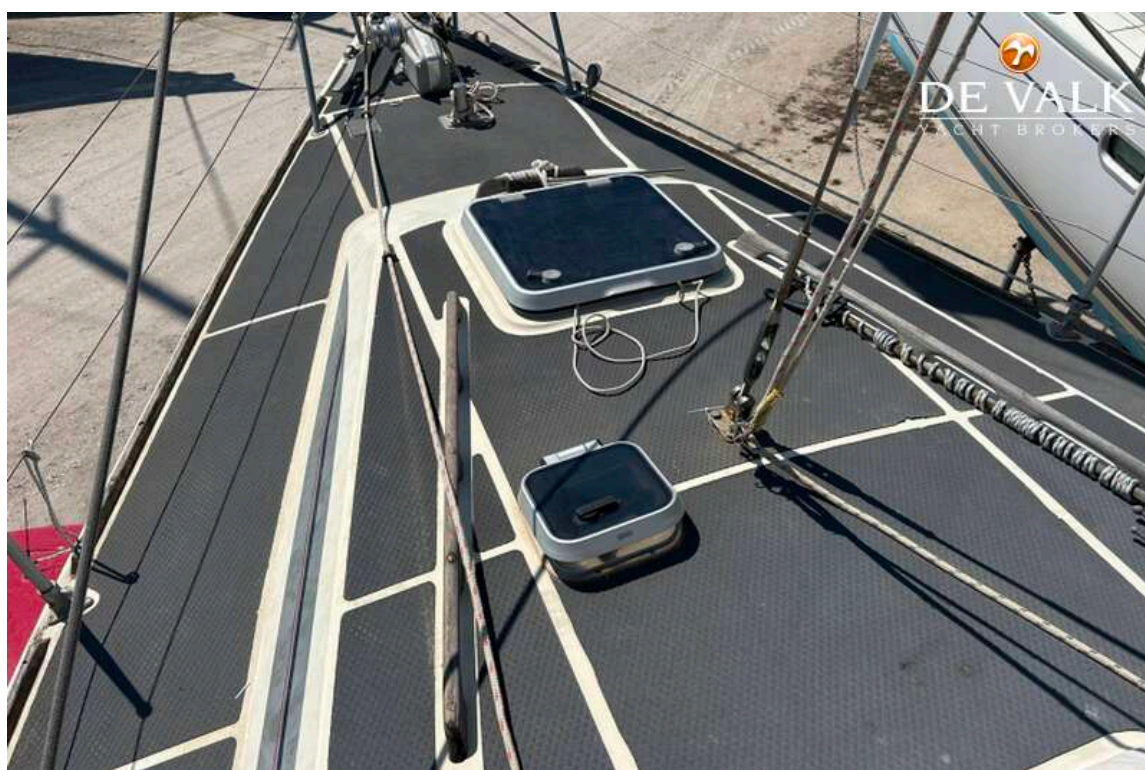


# WESTERLY OCEANLORD 41



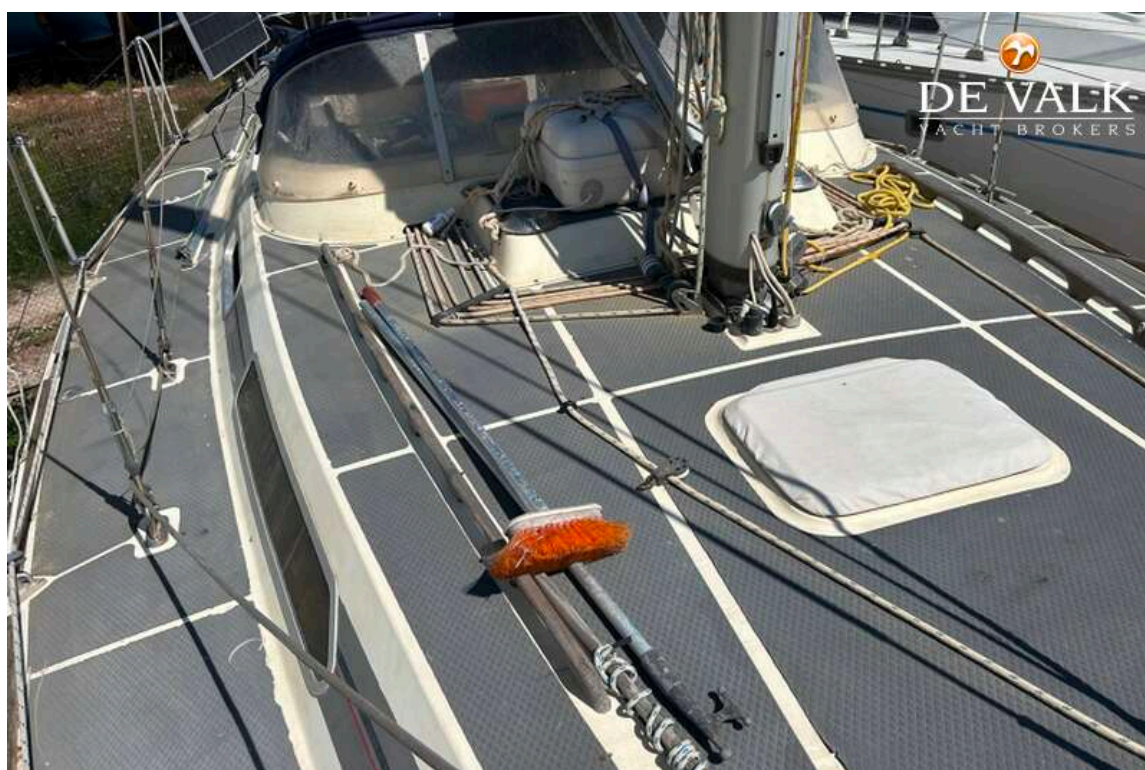


# WESTERLY OCEANLORD 41

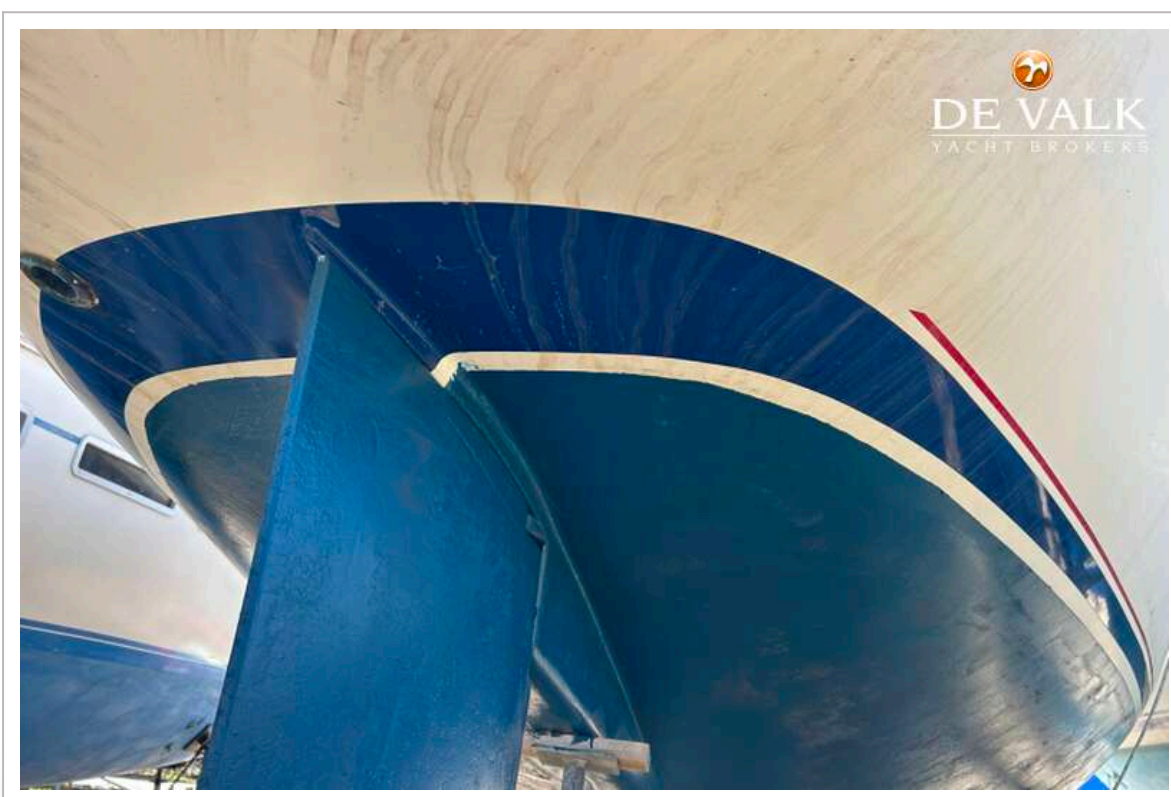




# WESTERLY OCEANLORD 41



# WESTERLY OCEANLORD 41



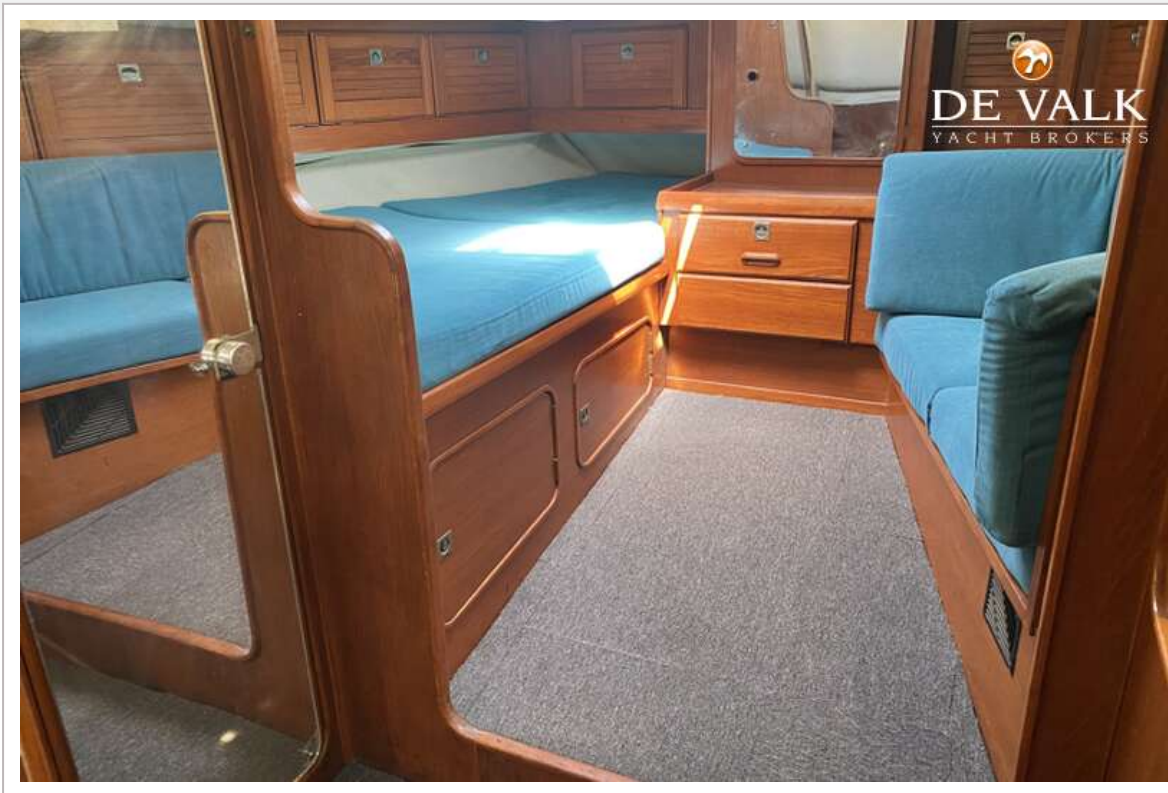


# WESTERLY OCEANLORD 41

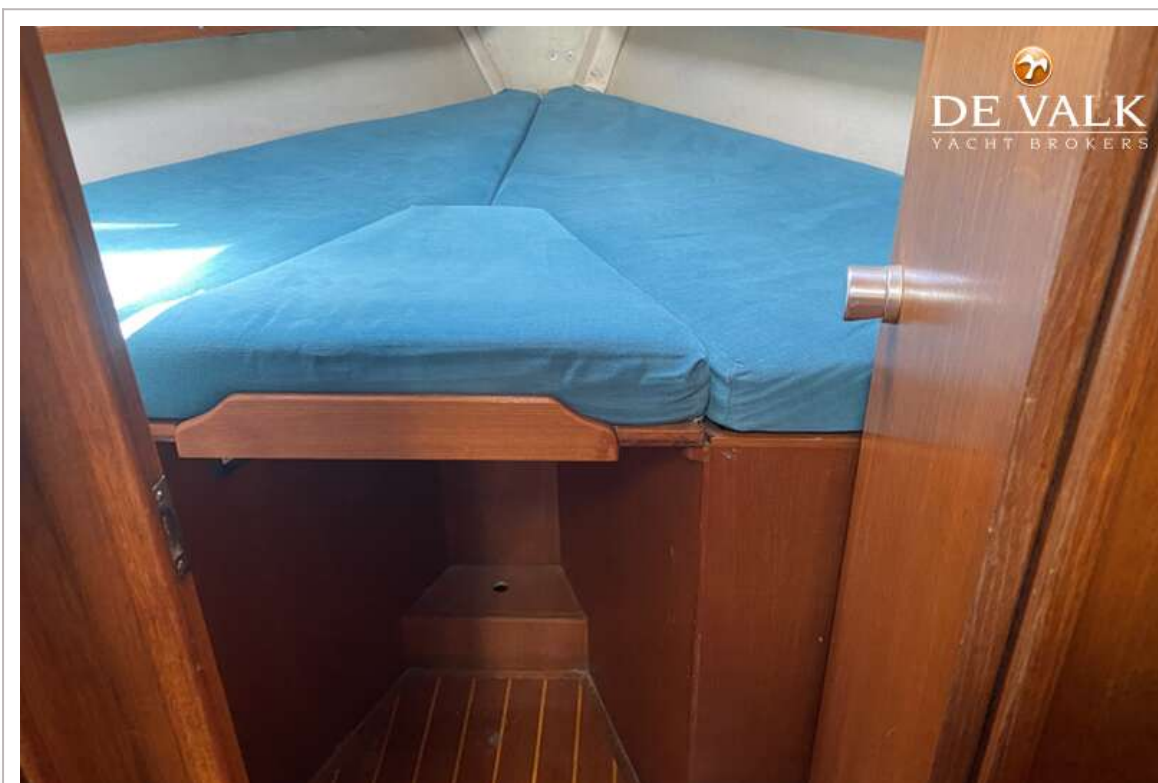




# WESTERLY OCEANLORD 41

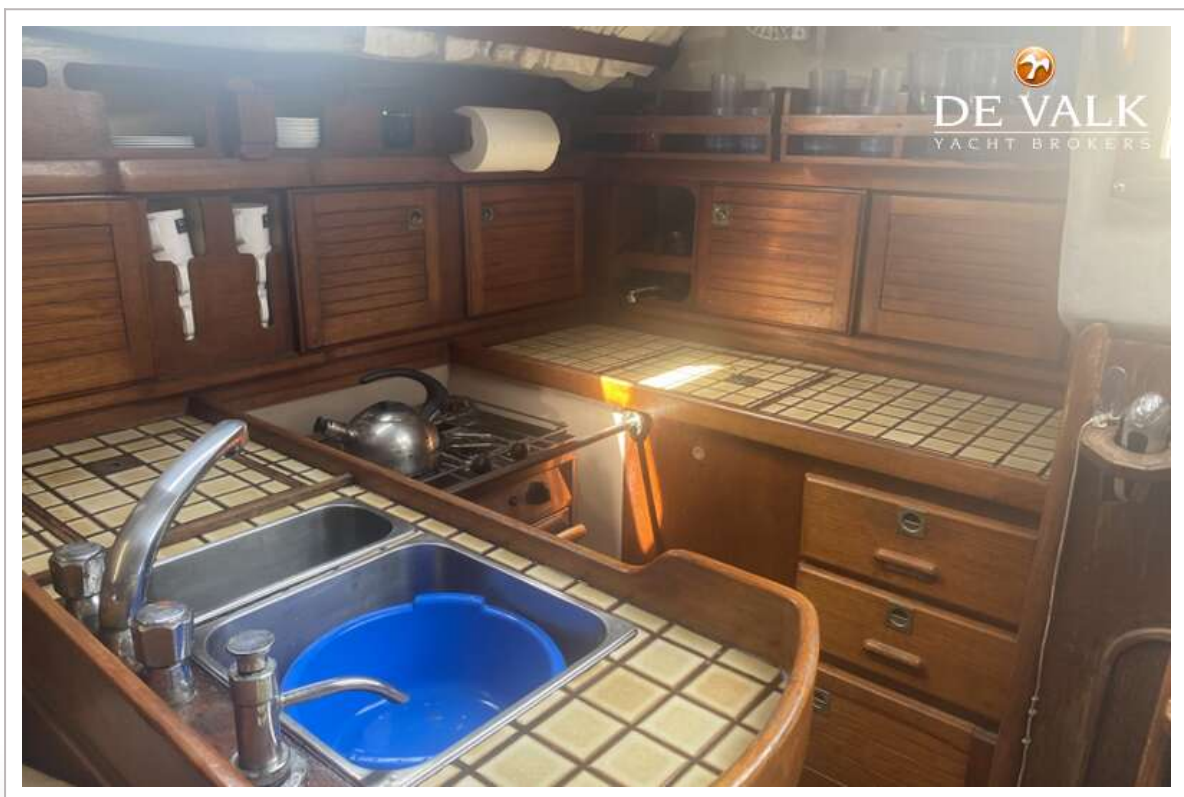


# WESTERLY OCEANLORD 41

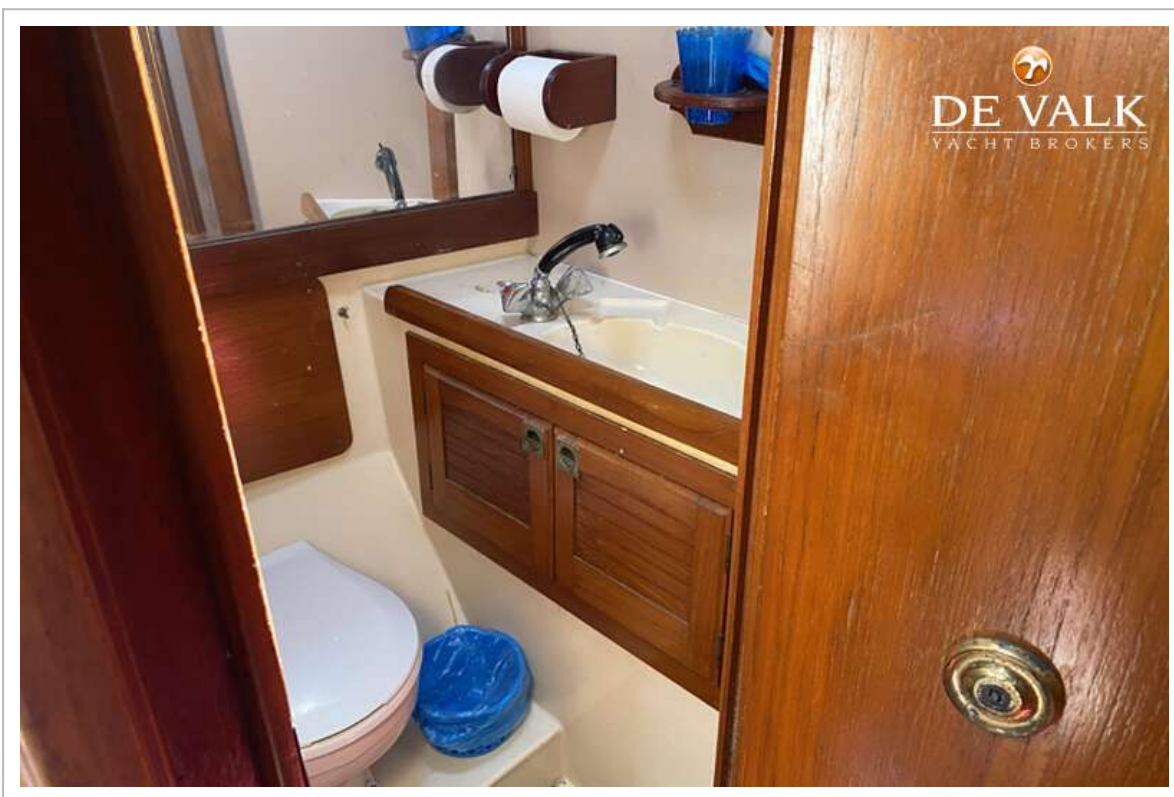




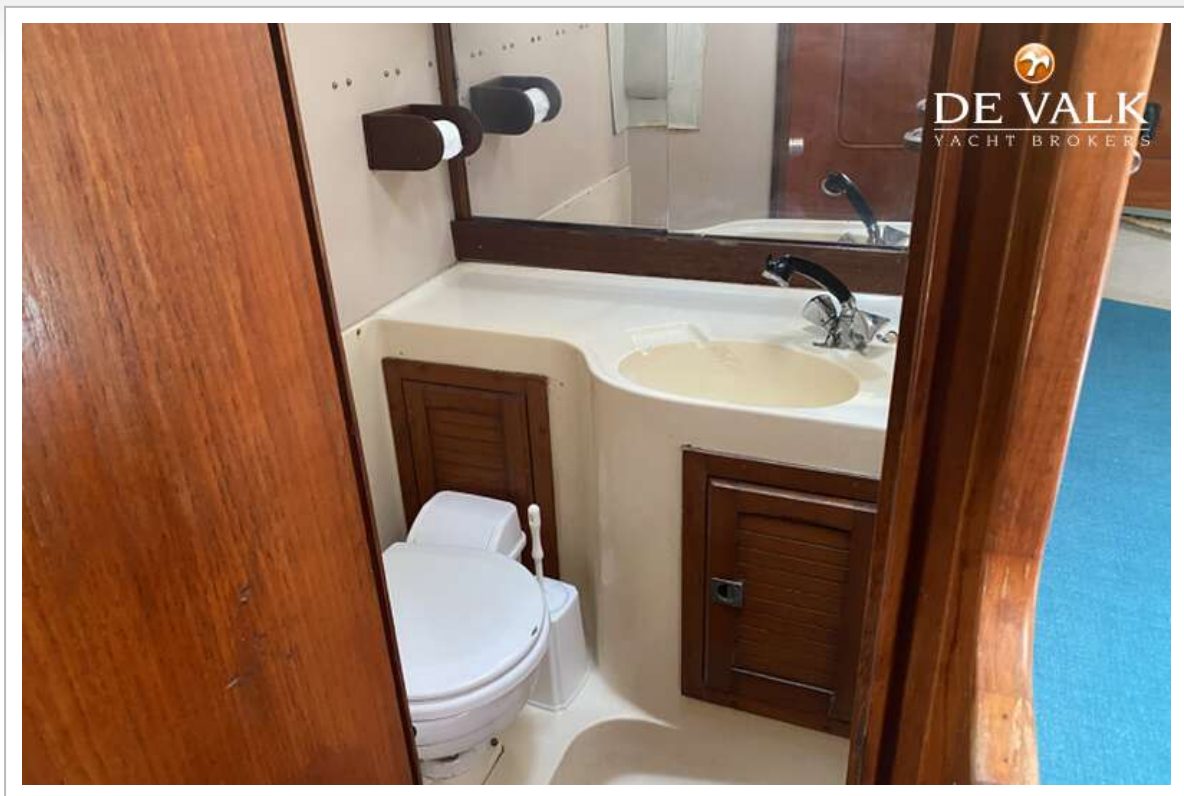
# WESTERLY OCEANLORD 41



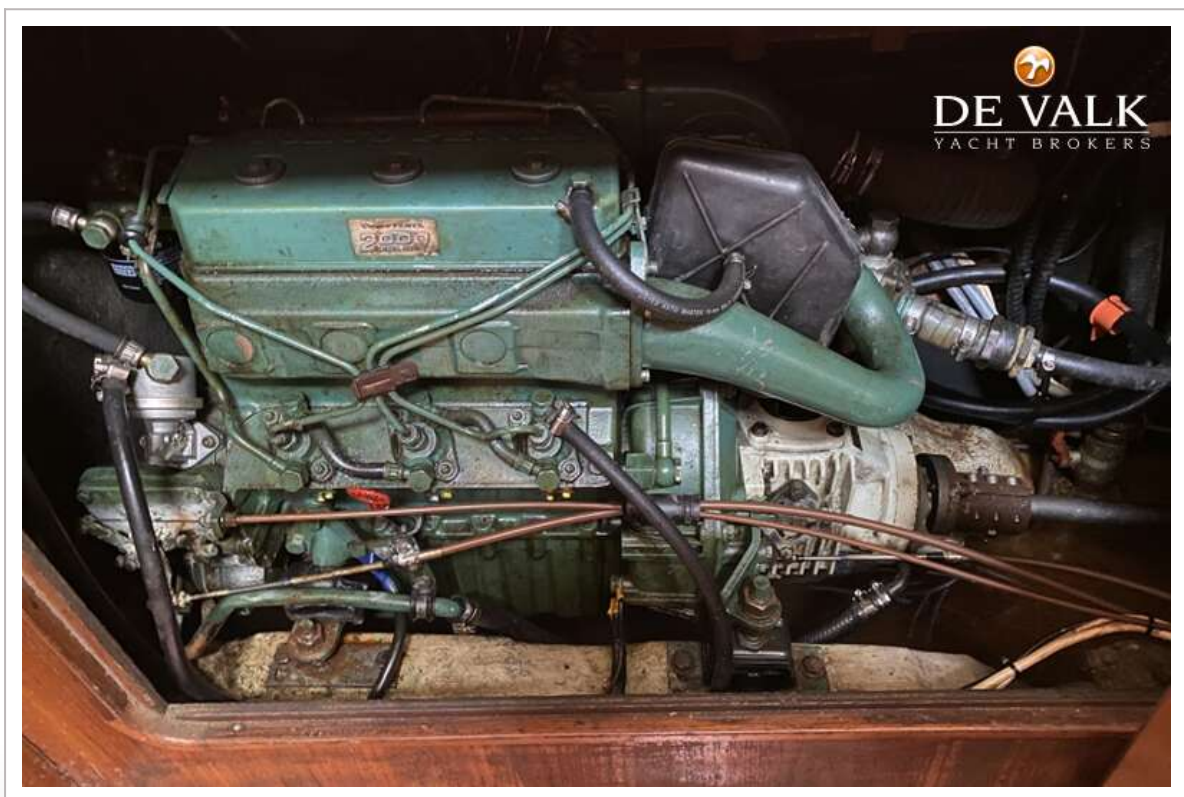
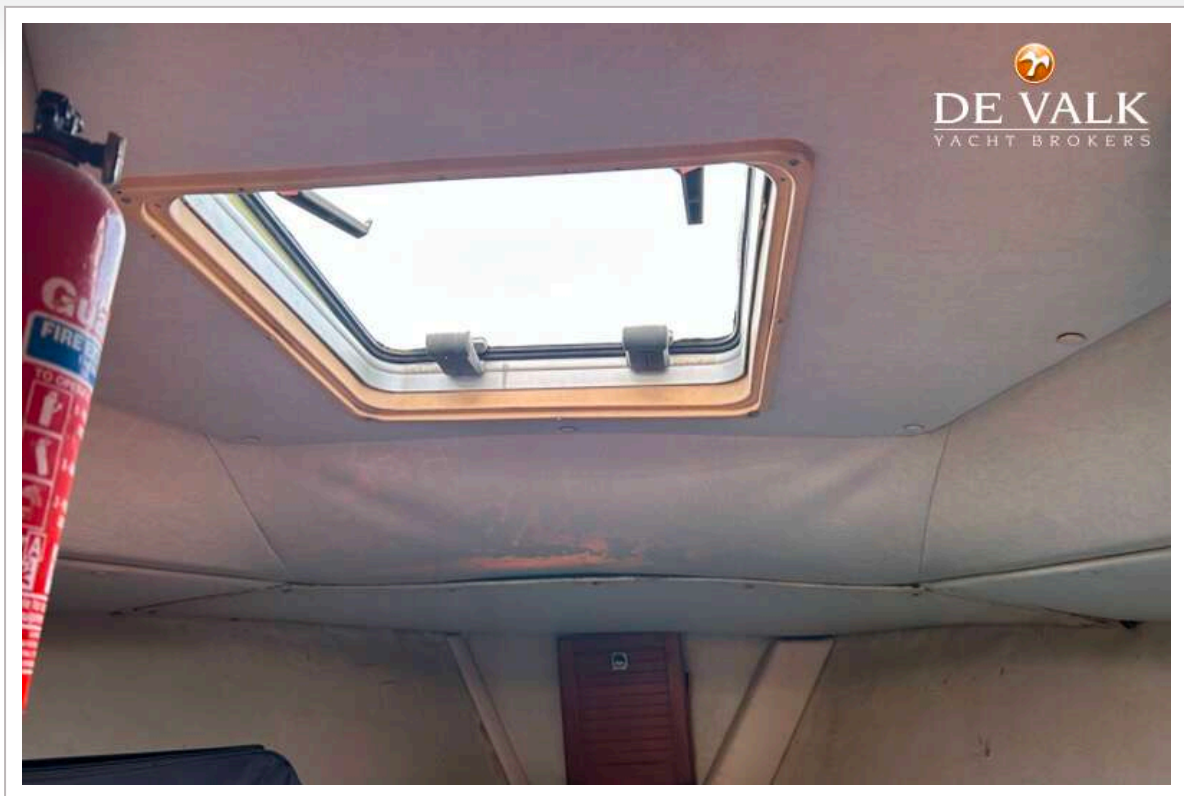
# WESTERLY OCEANLORD 41







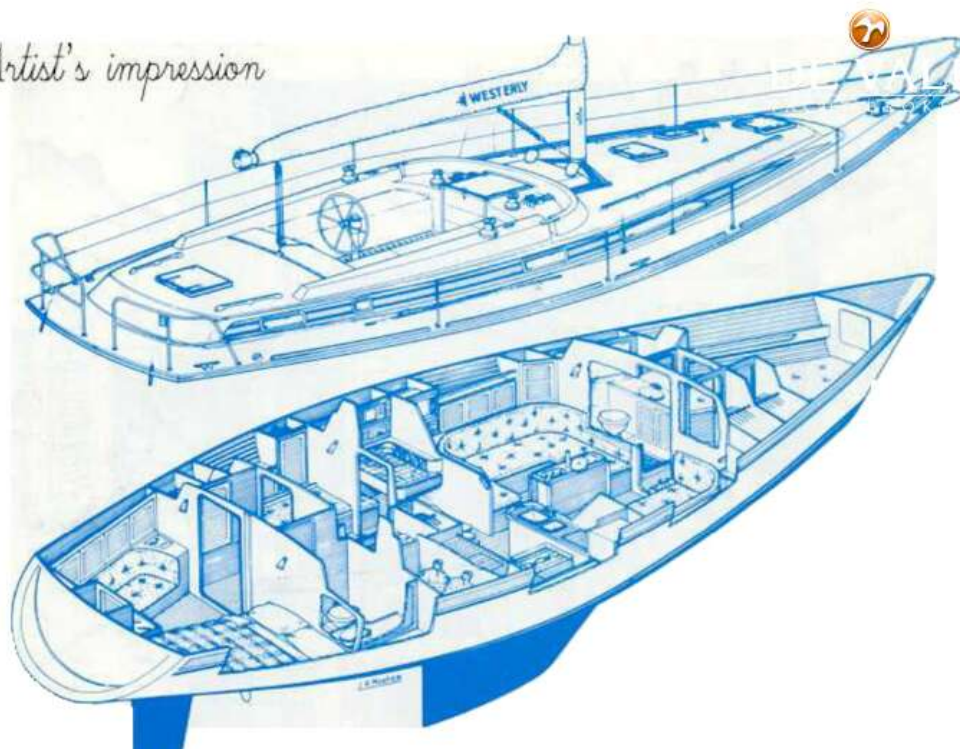
# WESTERLY OCEANLORD 41





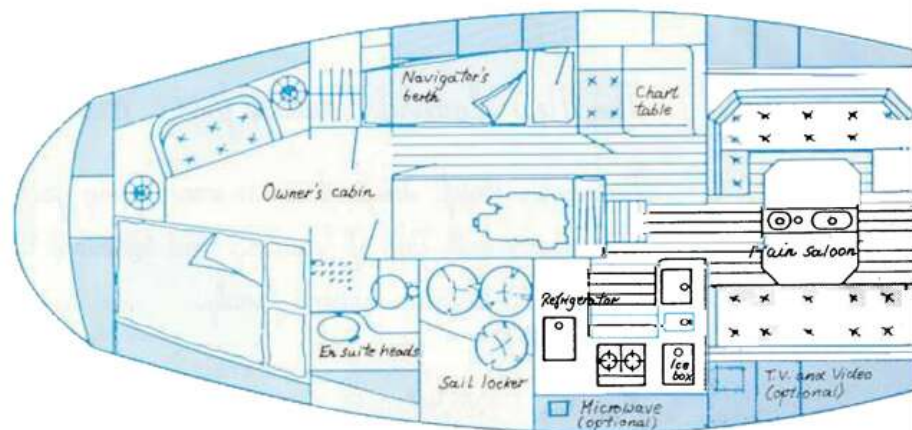
# WESTERLY OCEANLORD 41

*Artist's impression*



*Designer Draft Specifications*

**WESTERLY**  
*Oceanlord 41*



*Saloon and Galley looking aft*

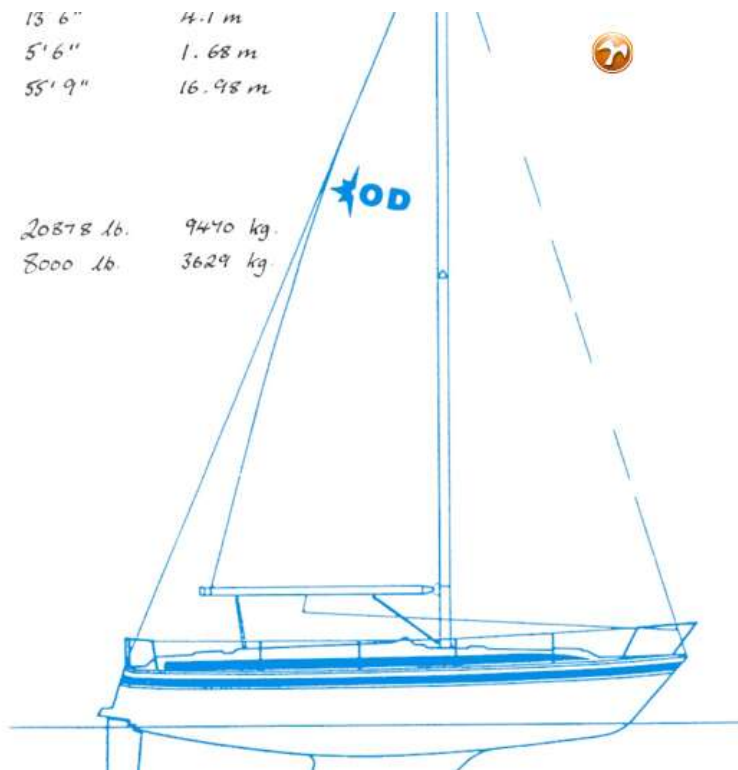


# WESTERLY OCEANLORD 41

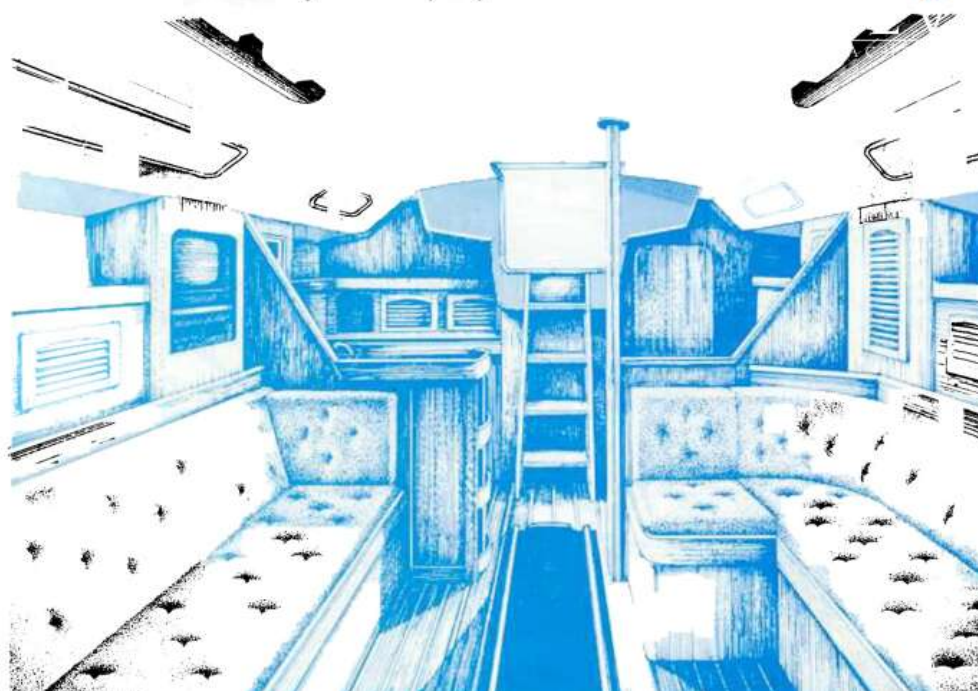
Beam	13' 6"	4.1 m
Draft	5' 6"	1.68 m
Mast height above waterline	55' 9"	16.98 m

## Designed weights :

Displacement	20878 lb.	9440 kg.
Ballast	8000 lb.	3629 kg.



## Saloon and Galley looking aft





*Owner's  
Double Aft Cabin  
with en suite heads  
to starboard*

