



DE VALK  
YACHT BROKERS



## AQUASTAR 43 FISHERMAN



DE VALK  
YACHT BROKERS

# AQUASTAR 43 FISHERMAN

## BROKER'S COMMENTS

Aquastar 43 - blue water luxury with timeless British craftsmanship. This is a fantastic example of the sought after Aquastar 43 which is available for viewing. The Aquastar 43 is a premium semi-displacement motor yacht, meticulously handcrafted in the Channel Islands by one of the UK's most respected yacht builders. Designed for serious cruising in comfort and safety, she combines robust offshore performance with the luxurious appointments of a true gentleman's motor yacht. Whether cruising the English Channel or traversing the Bay of Biscay, the Aquastar 43 offers exceptional stability.

*Hartmut Ross*

## SPECIFICATIONS

<b>Dimensions</b>	14.30 x 4.10 x 1.35 (m)	<b>Builder</b>	Aquastar
<b>Built</b>	1994	<b>Cabins</b>	2
<b>Material</b>	GRP	<b>Berths</b>	4
<b>Engine(s)</b>	2 x Cummins 6 BTA diesel	<b>Hp/Kw</b>	2 x 250.00 (hp), 184.00 (kw)
<b>Asking price</b>	€ 149.000 (VAT Paid)	<b>Lying</b>	contact Kiel

## CONTACT

<b>Sales office</b>	De Valk Kiel	<b>Telephone</b>	+49 1712312133
<b>Address</b>	Hermann Rennerstrasse 12 22609 Hamburg DE	<b>E-mail</b>	kiel@devalk.nl

## DISCLAIMER

These particulars are given in good faith as supplied but cannot be guaranteed.



# AQUASTAR 43 FISHERMAN

## GENERAL

<b>Model</b>	AQUASTAR 43 FISHERMAN
<b>Type</b>	motor yacht
<b>LOA (m)</b>	14,30
<b>Beam (m)</b>	4,10
<b>Draft (m)</b>	1,35
<b>Air draft (m)</b>	4,75
<b>Air draft min (m)</b>	3,75
<b>Headroom (m)</b>	2,00
<b>Year built</b>	1994
<b>Launched</b>	1994
<b>Builder</b>	Aquastar
<b>Country</b>	United Kingdom
<b>Displacement (t)</b>	14
<b>Hull material</b>	GRP
<b>Hull colour</b>	white
<b>Superstructure material</b>	GRP
<b>Rubbing strake</b>	stainless steel
<b>Deck material</b>	GRP
<b>Deck finish</b>	non-skid paint
<b>Superstructure deck finish</b>	paint
<b>Cockpit deck finish</b>	teak
<b>Antifouling (year)</b>	2015 2015 Osmosis profile axis
<b>Window frame</b>	aluminium
<b>Window material</b>	glass
<b>Insulation</b>	rockwool
<b>Flybridge</b>	yes
<b>Flybridge cover</b>	yes
<b>Flybridge suncover</b>	yes
<b>Radar arch</b>	collapsible
<b>Fuel tank (litre)</b>	GRP 2.200



# AQUASTAR 43 FISHERMAN

Level indicator (fuel tank)	yes
Freshwater tank (litre)	GRP 1.000
Level indicator (freshwater)	yes
Blackwater tank (litre)	120
Wheel steering	hydraulic
Inside helm position	yes
Flybridge helm position	yes
Emergency tiller	yes

## ACCOMMODATION

Cabins	2
Berths	4
Interior	yes
Layout	yes
Floor	carpet
Open cockpit	yes
Aft deck	yes
Deck saloon	yes
Doghouse	yes
Saloon	yes
Headroom saloon (m)	2,00
Heating	Ebersbacher Diesel
Navigation center	yes
Chart table	yes
Dinette	yes
Sliding door to cockpit	yes
Galley	yes
Countertop	yes
Sink	stainless steel
Cooker	calor gas
Fridge	New 2025



# AQUASTAR 43 FISHERMAN

Hot water system	yes
Water pressure system	yes
Owners cabin	double bed
Bed length (m)	2,00 x 1,60
Wardrobe	hanging/drawers/shelves
Bathroom	separate
Toilet	en suite
Toilet system	manual
Wash basin	in the bathroom
Shower	en suite
Guest cabin 1	double bed
Bed length (m)	1,97 x 1,20
Wardrobe	hanging and drawers

## MACHINERY

No of engines	2
Make	Cummins
Type	6 BTA
HP	250
kW	184
Fuel	diesel
Year installed	1994
Year of overhaul	Regularly
Maximum speed (kn)	17
Cruising speed (kn)	10
Consumption (l/hr)	10
Engine hours	1319
Engine cooling system	seawater
Drive	shaft
Shaft seal	yes
Engine controls	yes



# AQUASTAR 43 FISHERMAN

<b>Gearbox</b>	yes
<b>Bowthruster</b>	electric
<b>Sternthruster</b>	electric
<b>Exhaust</b>	yes
<b>Propeller type</b>	fixed
<b>Propeller blades</b>	4
<b>Electric bilge pump</b>	yes
<b>Bilge alarm</b>	yes
<b>Electrical installation</b>	yes
<b>Batteries</b>	yes
<b>Start battery</b>	2
<b>Service battery</b>	2
<b>Battery charger</b>	yes
<b>Inverter</b>	yes
<b>Shorepower</b>	with cable
<b>Trimtabs</b>	yes

## NAVIGATION

<b>Compass</b>	yes
<b>Compass on flybridge</b>	yes
<b>Electric compass</b>	yes
<b>Multi control display</b>	yes
<b>Depth sounder/log</b>	yes
<b>VHF</b>	yes
<b>Autopilot</b>	yes
<b>Rudder angle indicator</b>	yes
<b>Plotter/GPS</b>	yes
<b>Electronic chart(s)</b>	yes
<b>Camera</b>	Fore and aft
<b>Navigation lights</b>	yes
<b>Searchlight</b>	yes



# AQUASTAR 43 FISHERMAN

Loudhailer yes

## EQUIPMENT

Fixed windscreen	yes
Cockpit cover	yes
Cockpit cushions	yes
Cockpit table	yes
Cockpit chairs	yes
Bathing platform	yes
Boarding ladder	yes
Bow ladder	yes
Deck shower	yes
Anchor	yes
Anchor chain	yes
Windlass	electrical
Deck wash	yes
Dinghy	rigid hull
Outboard	Suzuki 15 PS
Davits	stainless steel
Davits controls	electrical
Sea railing	stainless steel
Grab rail (superstructure)	stainless steel
Wiper	yes
Horn	yes
Binocular	yes
Fenders	yes
Mooring lines	yes
Spare parts	yes
Tools	yes
TV	yes
Satellite	yes



# AQUASTAR 43 FISHERMAN

Radio-cd player	yes
Clock - barometer	yes



# AQUASTAR 43 FISHERMAN



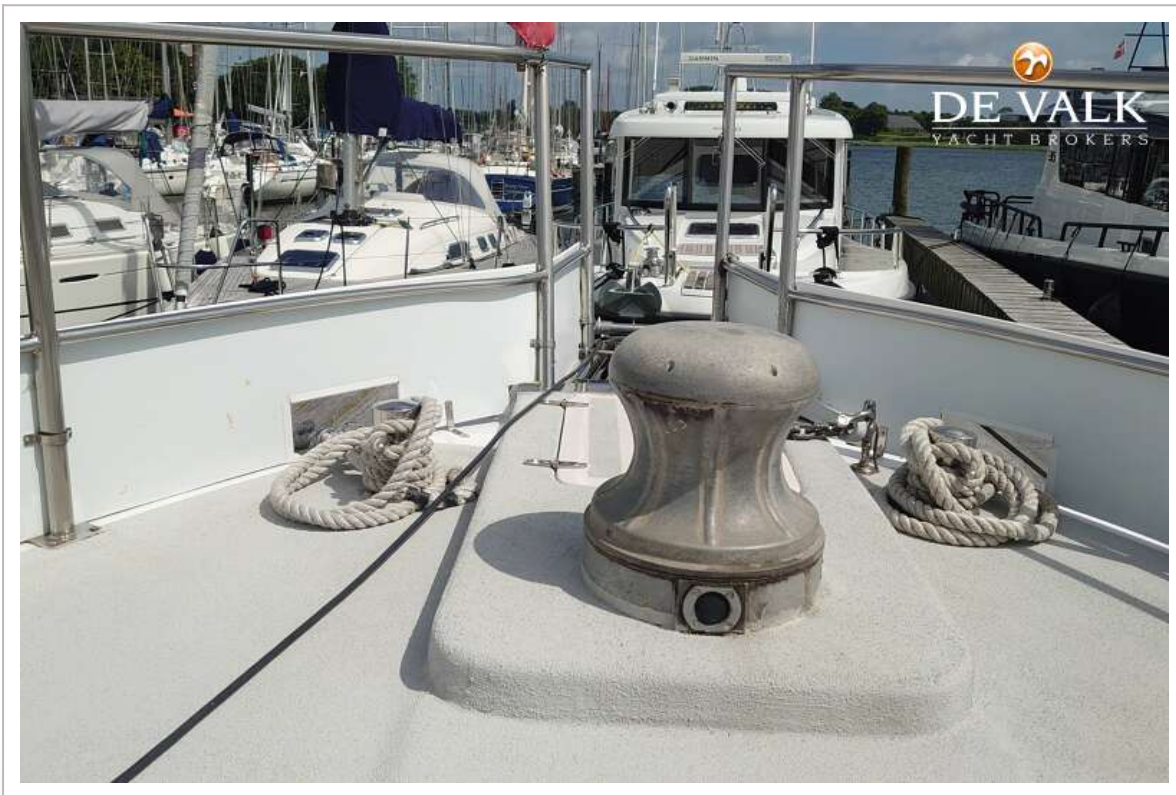
# AQUASTAR 43 FISHERMAN



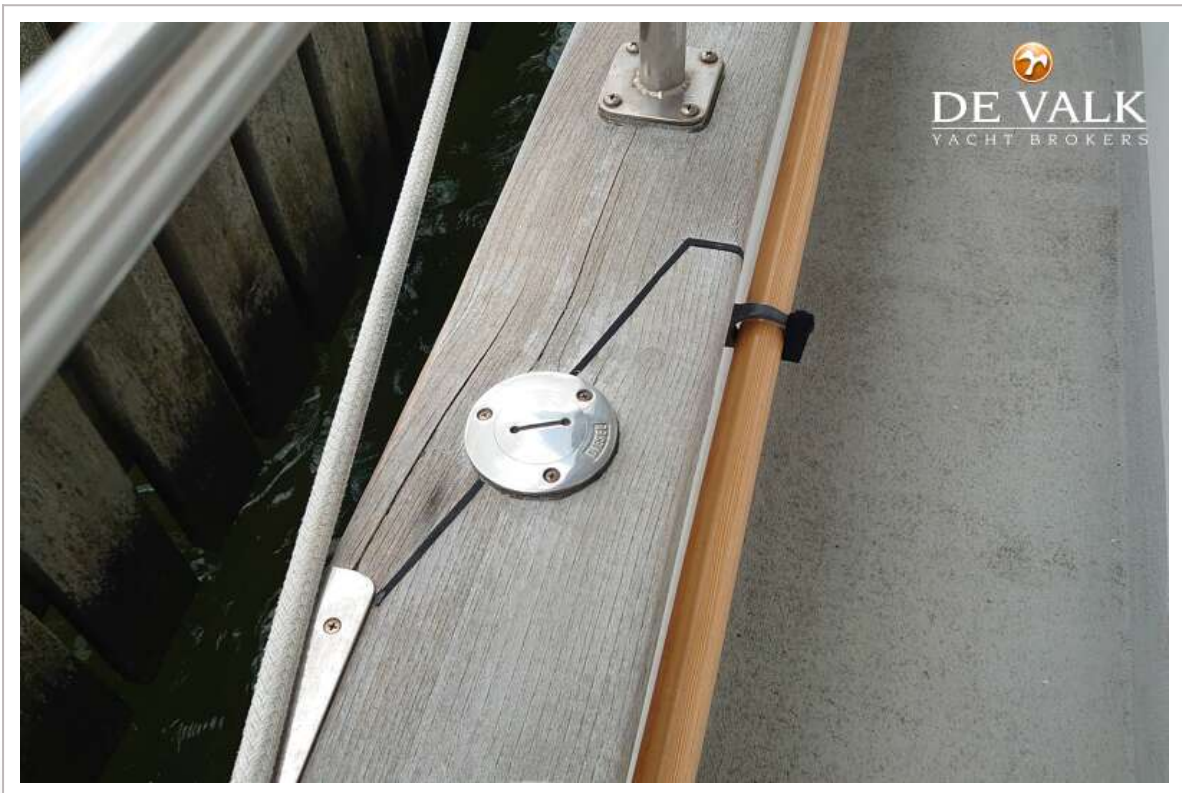
# AQUASTAR 43 FISHERMAN



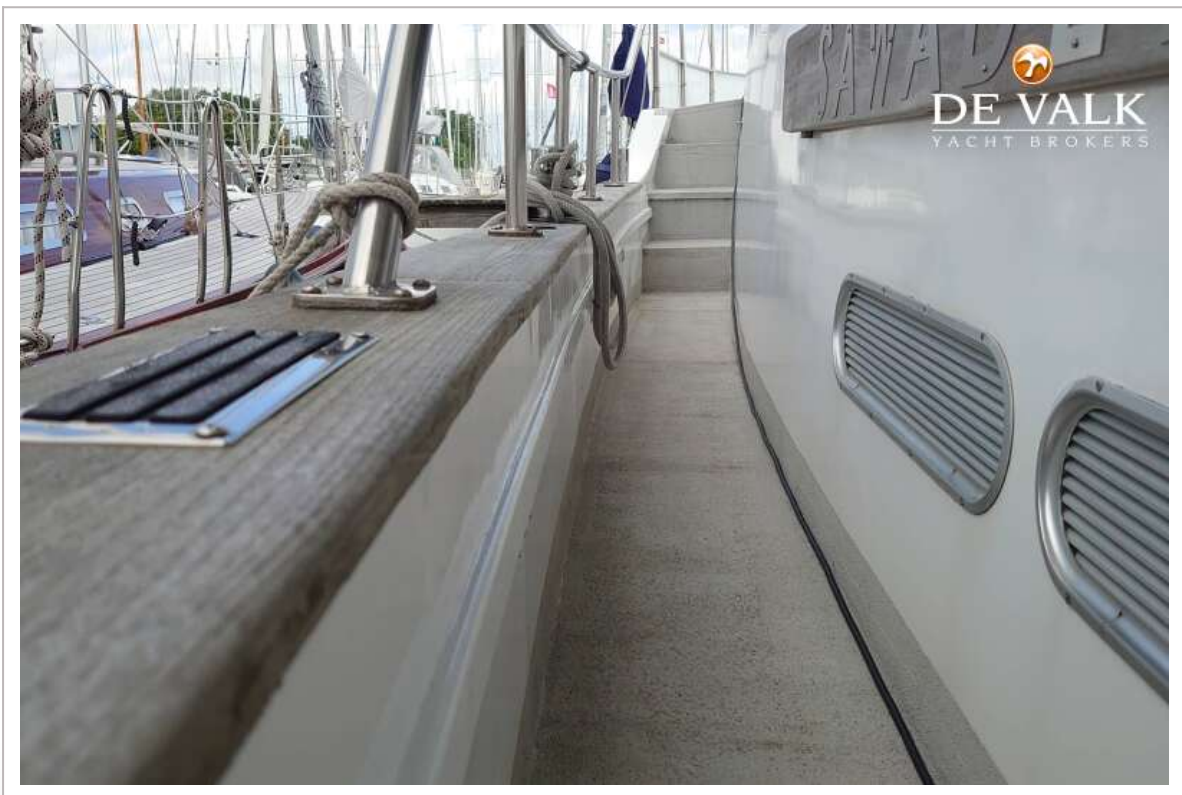
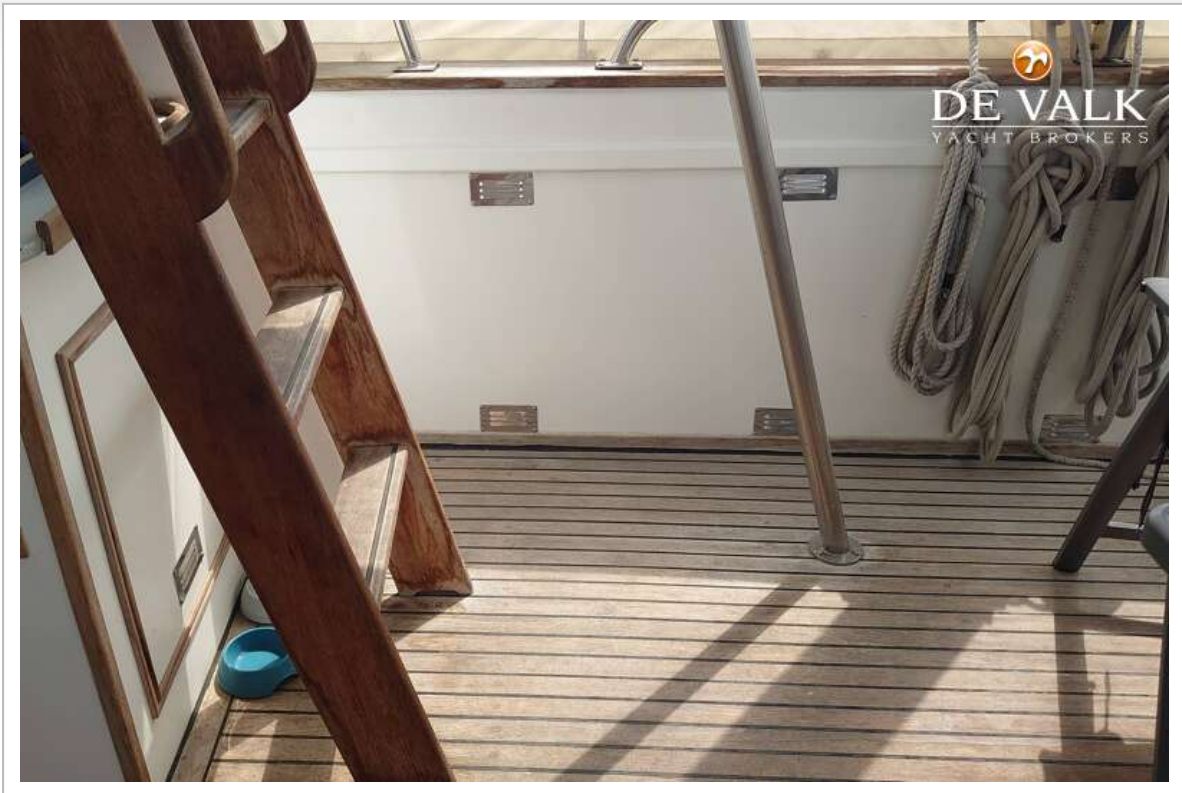
# AQUASTAR 43 FISHERMAN



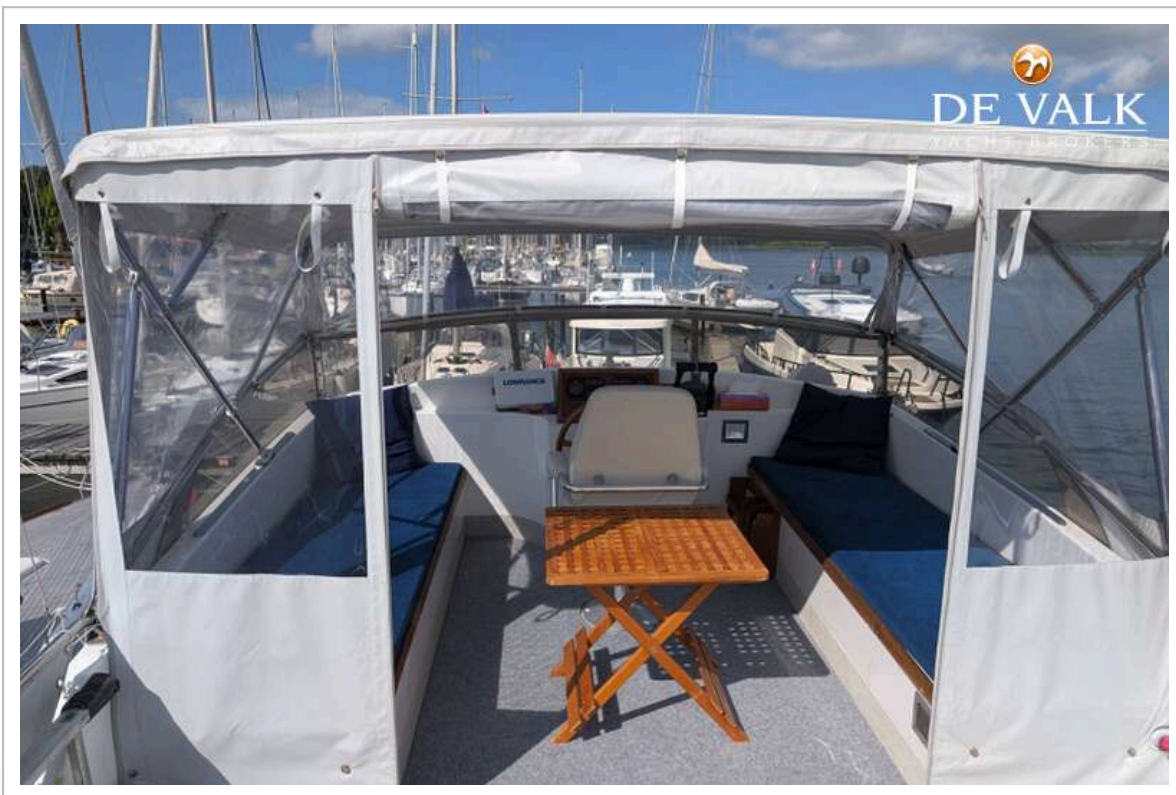
# AQUASTAR 43 FISHERMAN



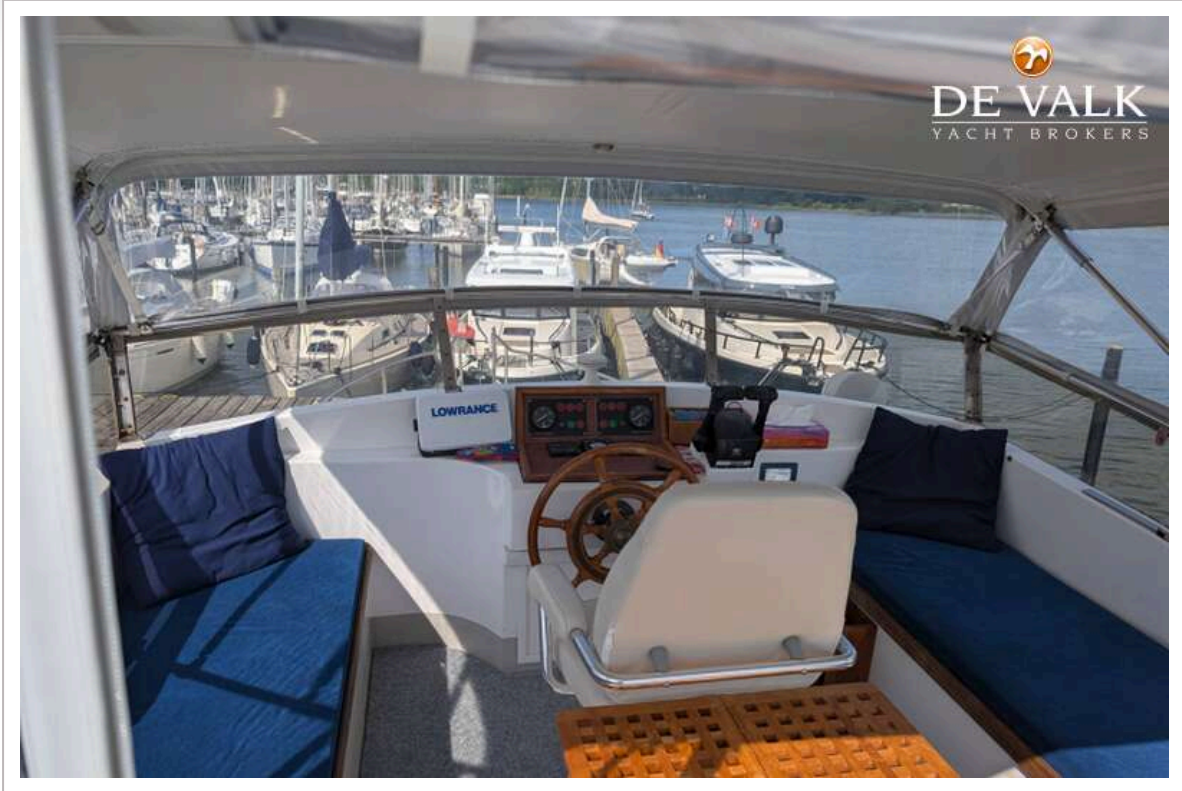
# AQUASTAR 43 FISHERMAN



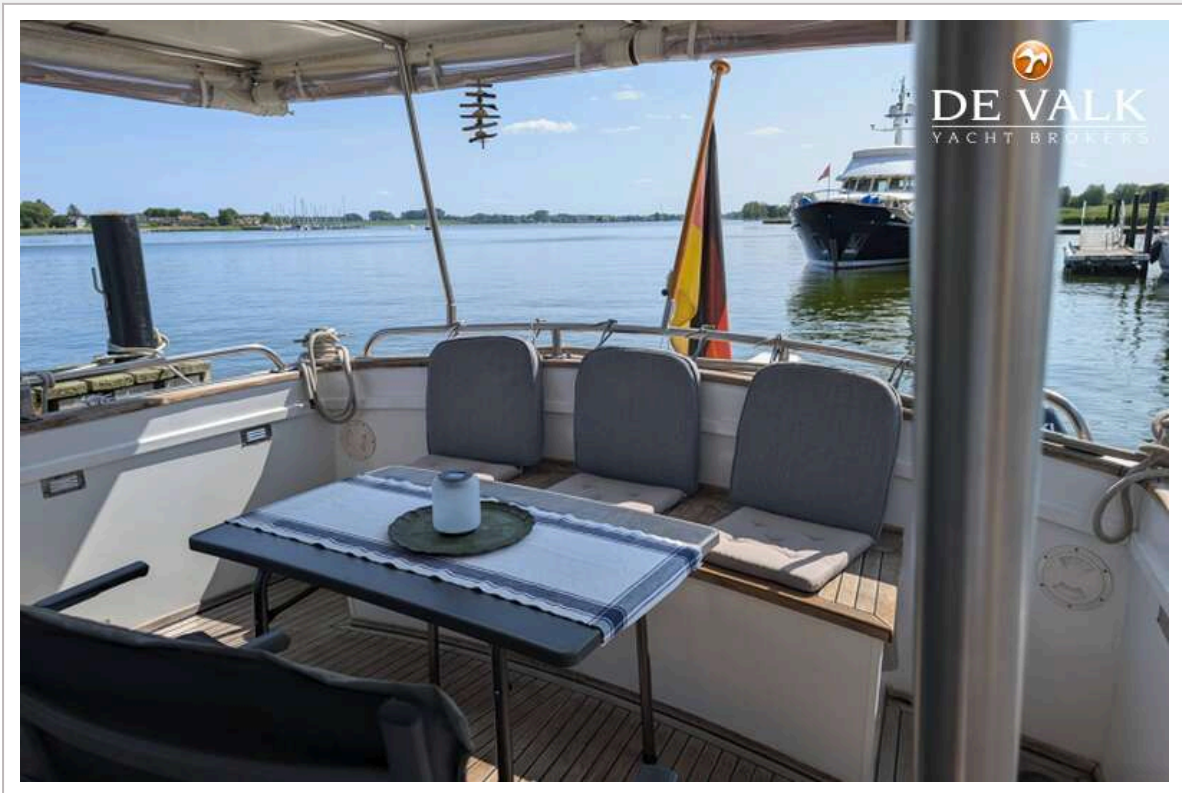
# AQUASTAR 43 FISHERMAN



# AQUASTAR 43 FISHERMAN



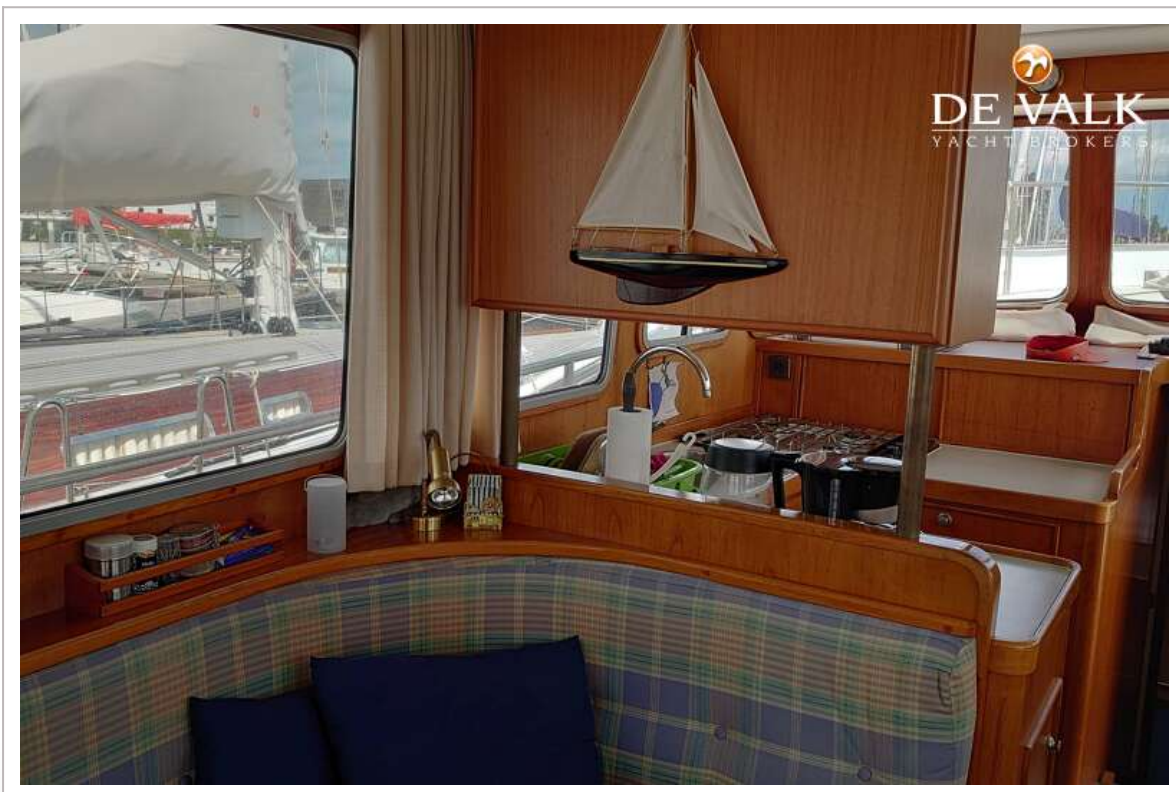
# AQUASTAR 43 FISHERMAN



# AQUASTAR 43 FISHERMAN



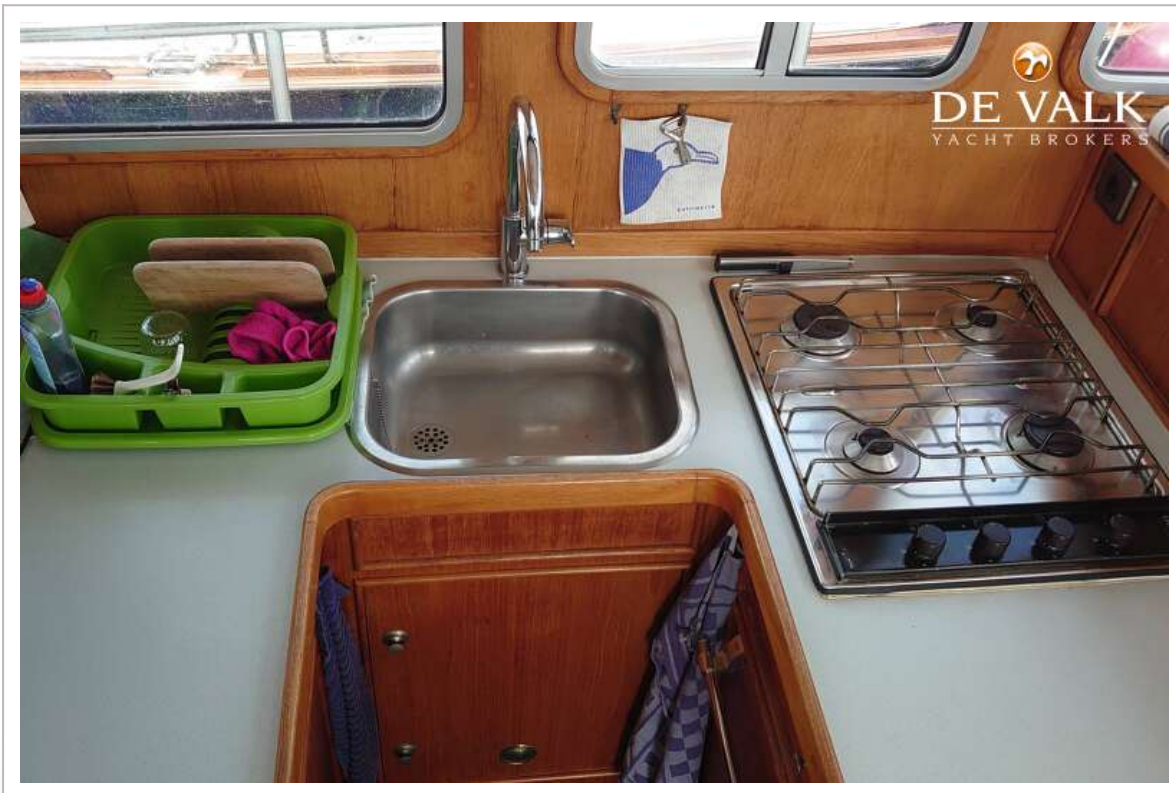
# AQUASTAR 43 FISHERMAN



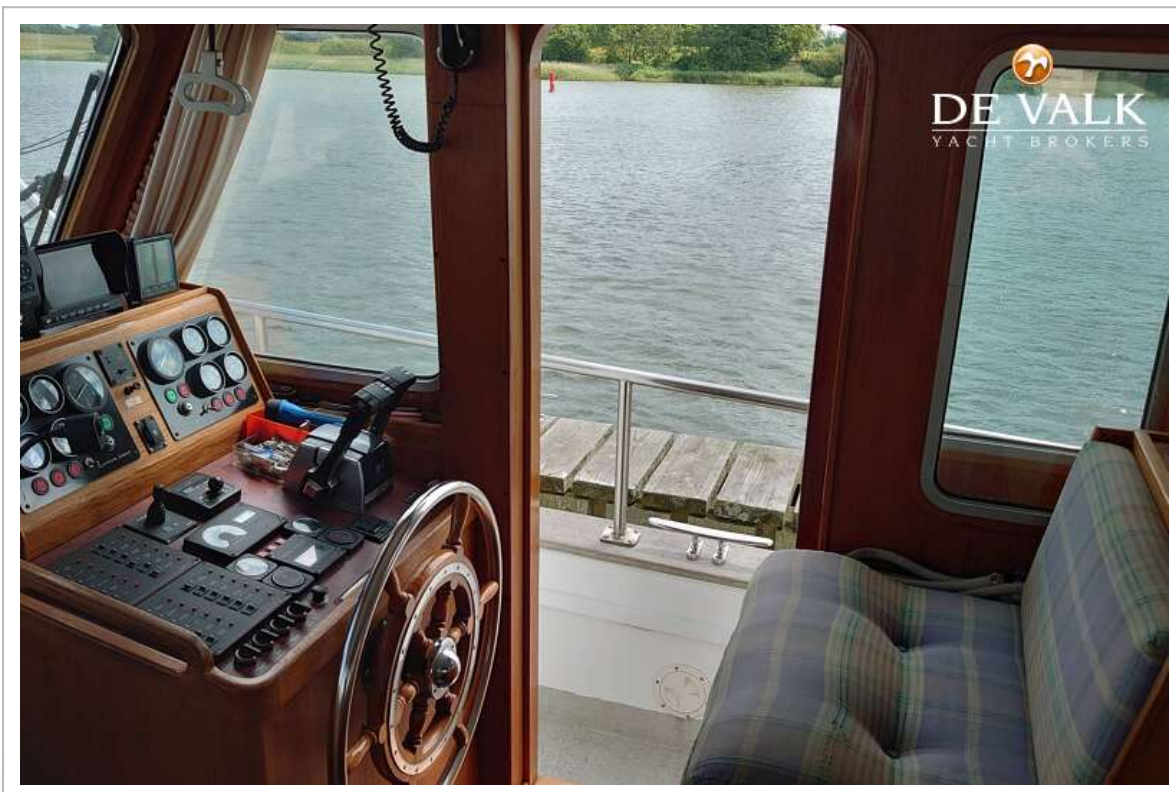
# AQUASTAR 43 FISHERMAN



# AQUASTAR 43 FISHERMAN



# AQUASTAR 43 FISHERMAN



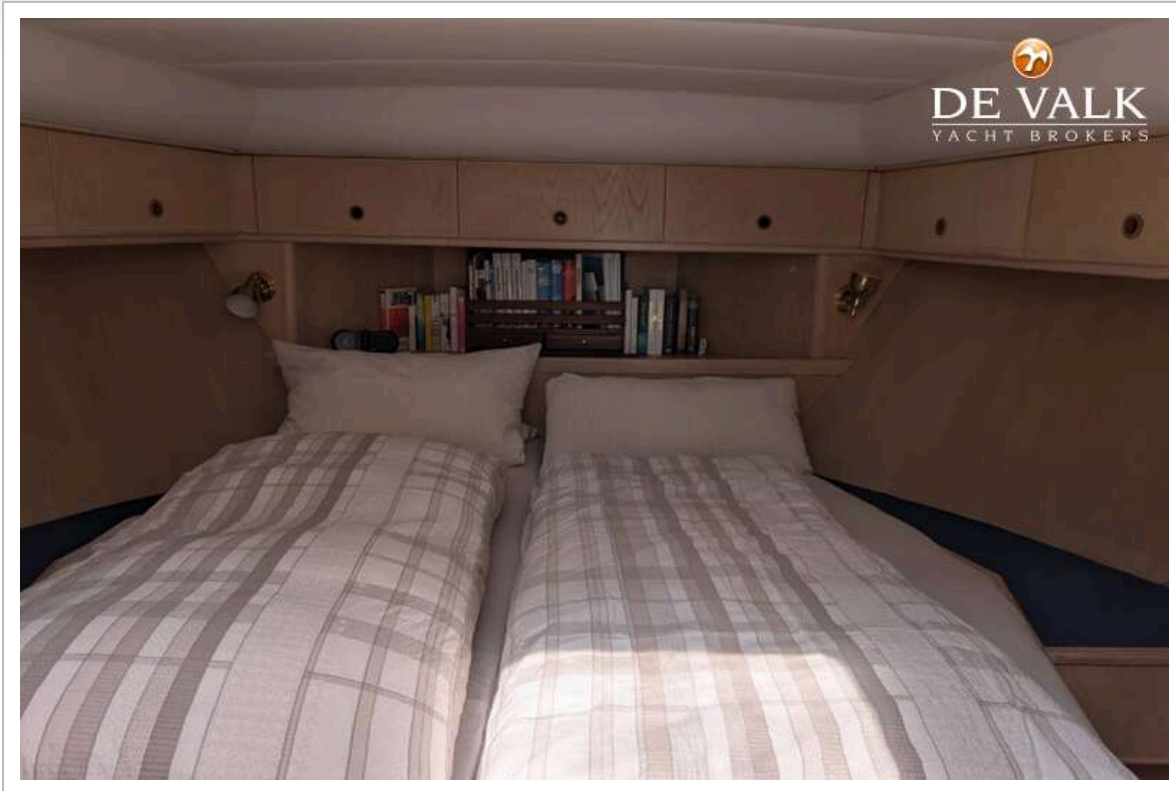
# AQUASTAR 43 FISHERMAN



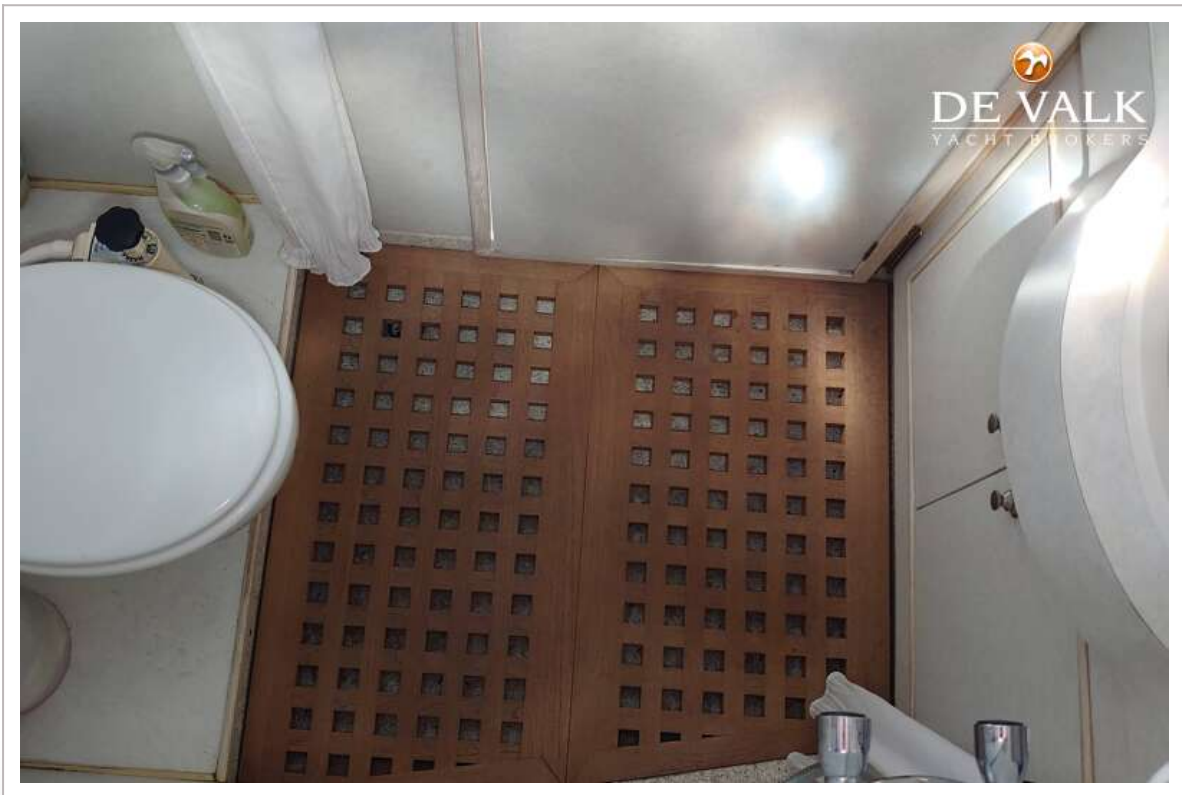
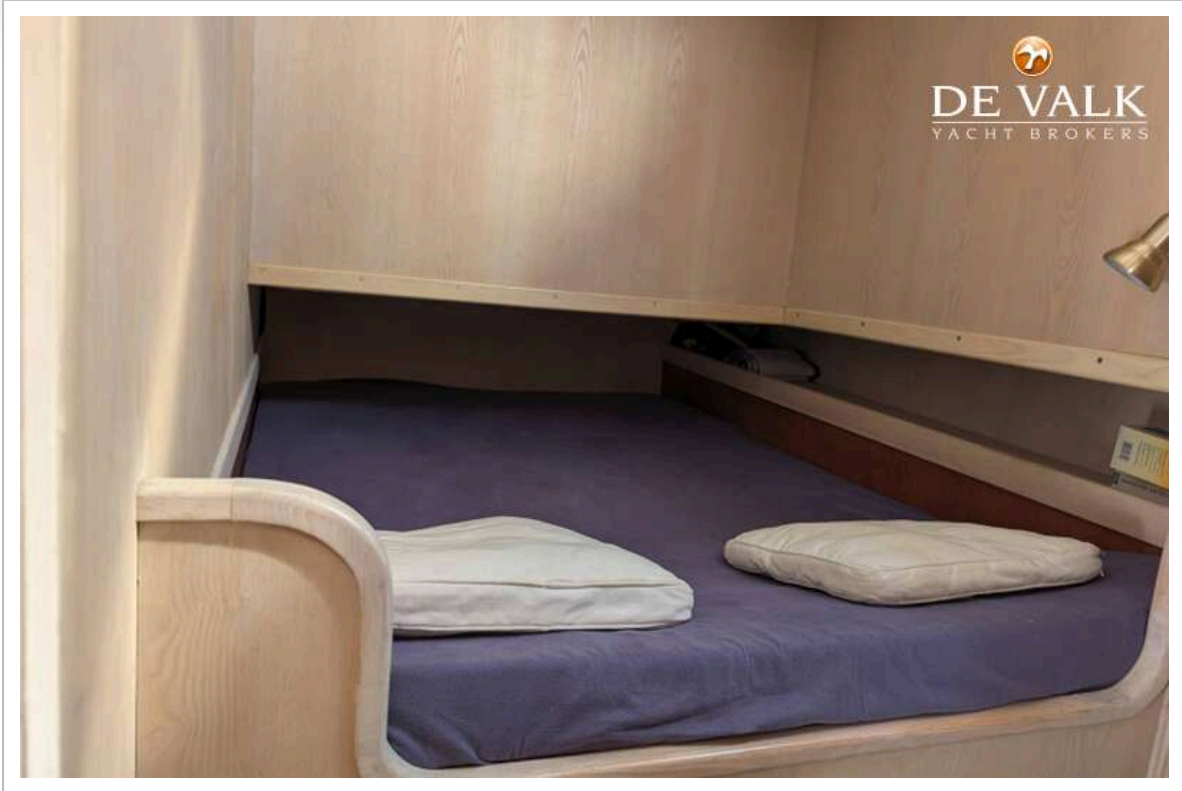
# AQUASTAR 43 FISHERMAN



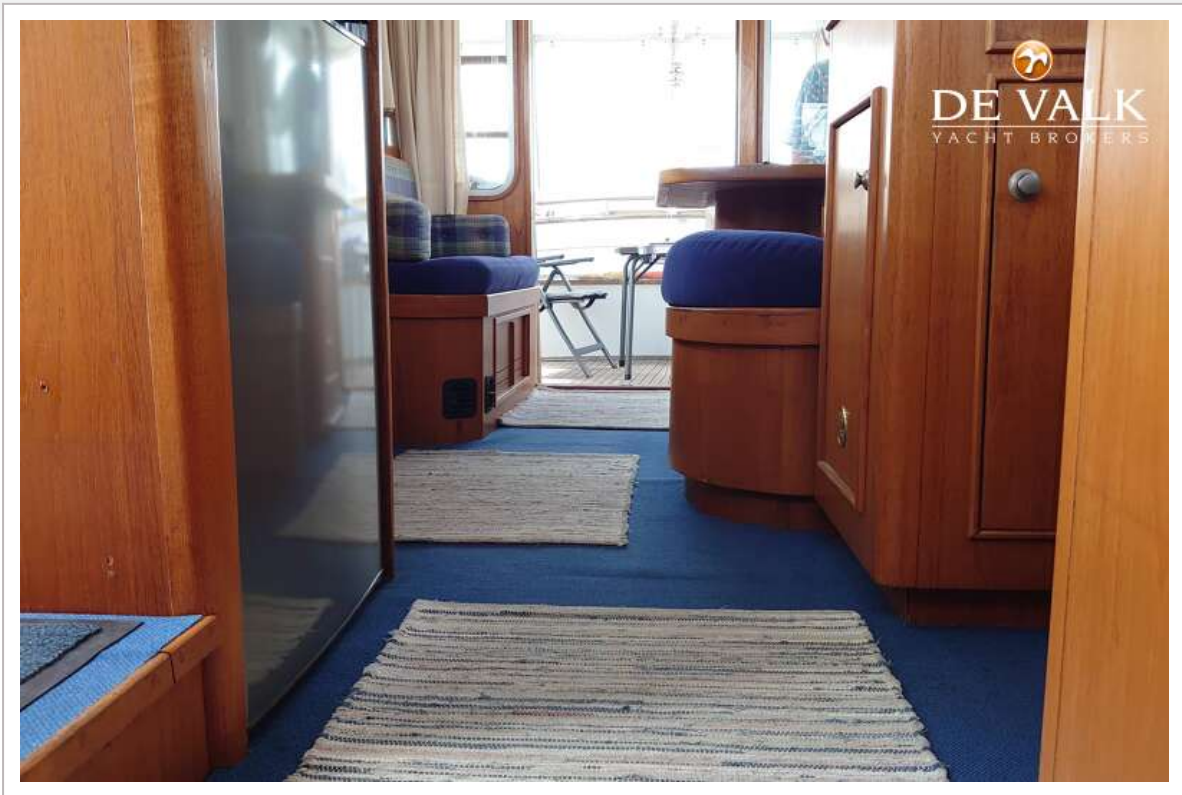
# AQUASTAR 43 FISHERMAN



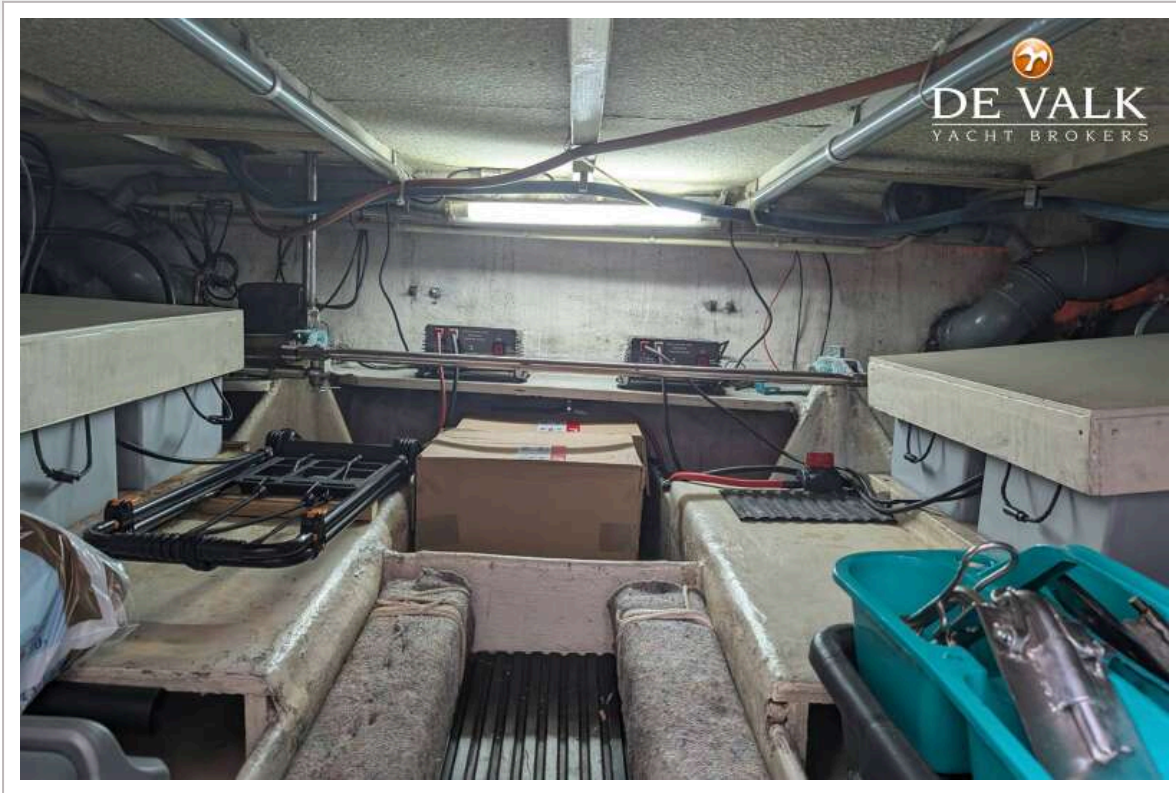
# AQUASTAR 43 FISHERMAN



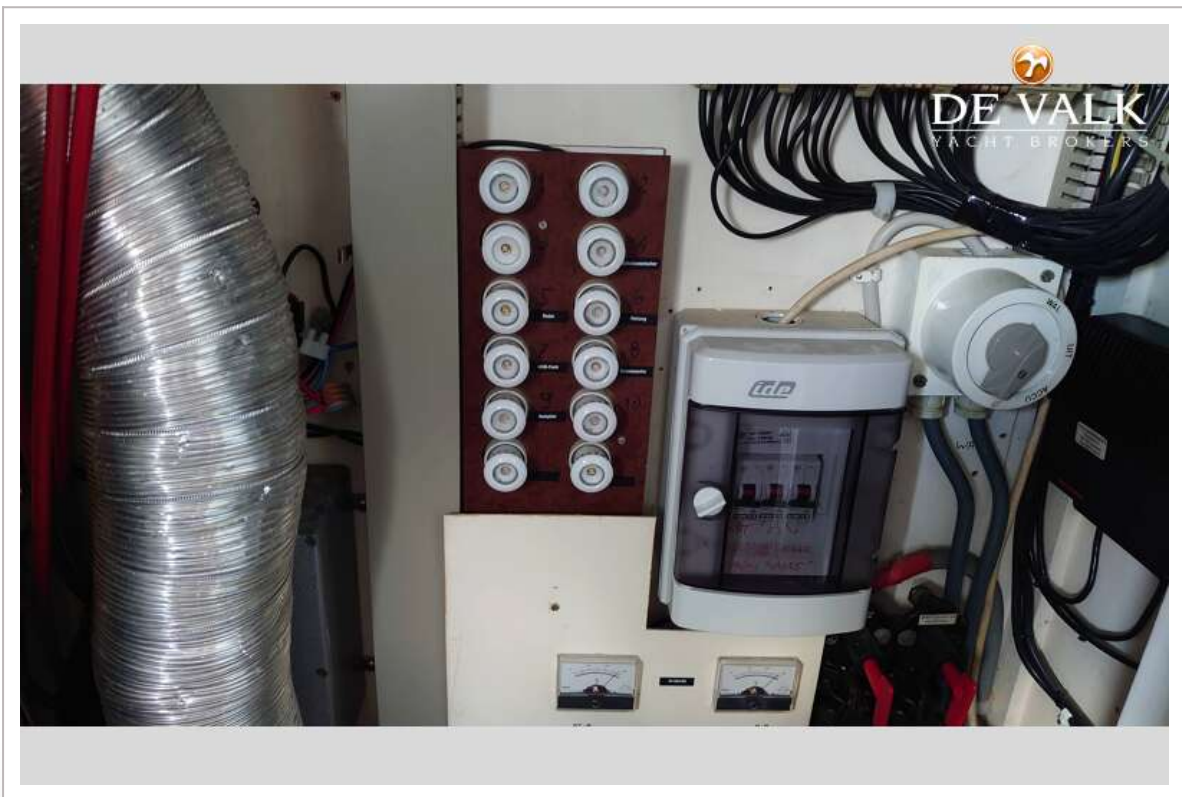
# AQUASTAR 43 FISHERMAN



# AQUASTAR 43 FISHERMAN



# AQUASTAR 43 FISHERMAN



# AQUASTAR 43 FISHERMAN

