



ED BURNETT 58 LOD CLASSIC SCHOONER



ED BURNETT 58 LOD CLASSIC SCHOONER

BROKER'S COMMENTS

Amelia is a beautifully crafted Ed Burnett 58, combining timeless elegance with modern capability. Extensively refitted in 2023 with new sails, navigation equipment, a rebuilt engine, and a generator, she is ready for her next adventure. Her warm mahogany interior, electric winches, and easy-to-handle rig make her ideal for both long-distance cruising and relaxed coastal sailing. A rare opportunity for those seeking classic design with modern comfort. This vessel is offered via an online auction. For full details, specifications and bidding information, please visit: <https://bit.ly/4ekcoHG>

Jochem Heijermans

SPECIFICATIONS

Dimensions	21.58 x 4.53 x 2.45 (m)	Builder	MB Yachts, Dorset, UK
Built	2007	Cabins	4
Material	Wood Epoxy	Berths	7
Engine(s)	1 x Nanni 4.330 diesel	Hp/Kw	115.00 (hp), 84.64 (kw)
Asking price	€ 75.000 (VAT Paid)	Lying	

CONTACT

Sales office	De Valk Belgium	Telephone	+32 586 80 218
Address	1401 PT Nieuwpoort BE	E-mail	belgium@devalk.nl

DISCLAIMER

These particulars are given in good faith as supplied but cannot be guaranteed.



ED BURNETT 58 LOD CLASSIC SCHOONER

GENERAL

Model	ED BURNETT 58 LOD CLASSIC SCHOONER
Type	sailing yacht
LOA (m)	21,58
LWL (m)	14,92
Beam (m)	4,53
Draft (m)	2,45
Year built	2007
Builder	MB Yachts, Dorset, UK
Country	United Kingdom
Designer	Ed Burnett
Displacement (t)	32,3
Hull material	wood epoxy
Hull colour	white
Hull shape	round-bilged
Keel type	long keel
Superstructure material	mahogany Laminated
Rubbing strake	wood Solid teak
Deck material	teak Teak wood on plywood with epoxy coating
Deck finish	teak Solid teak
Superstructure deck finish	teak
Cockpit deck finish	teak
Antifouling (year)	2024
Dorades	yes
Window frame	mahogany Mahogany wood with tongue and groove joint
Window material	tempered glass
Deckhatch	yes
Portholes	mahogany Mahogany wood with tongue and groove joint
Fuel tank (litre)	stainless steel 1000
Level indicator (fuel tank)	yes
Freshwater tank (litre)	stainless steel 900



ED BURNETT 58 LOD CLASSIC SCHOONER

Level indicator (freshwater)	yes
Blackwater tank (litre)	stainless steel 2x 60
Greywater tank (litre)	2x 15l
Wheel steering	hydraulic Worm gear steering gear from Edson
More info on paintwork	(2023) Awlgrip hull & superstructure

ACCOMMODATION

Cabins	4
Berths	7
Crew cabin	yes
Interior	mahogany
Floor	teak Teak and maple inlay
Saloon	yes
Headroom saloon (m)	1.96
Sliding roof	manual
Heating	central heating Kabola (2023) radiators in every cabin and salon
Navigation center	yes
Chart table	yes
Aft Cabin	yes
Opening door to cockpit	yes
Galley	yes
Countertop	marble Black, natural marble tops (2023)
Sink	Black, natural marble tops (2023)
Cooker	Eno
Oven	Eno
Extractor	yes
Fridge	2x
Freezer	yes
Hot water system	on central heating
Water pressure system	electrical
Owners cabin	double bed



ED BURNETT 58 LOD CLASSIC SCHOONER

Bathroom	en suite
Toilet	en suite
Toilet system	electric (2023)
Wash basin	in the bathroom
Shower	en suite
Guest cabin 1	bunk bed
Wardrobe	hanging and shelves
Bathroom	en suite Portside
Toilet	en suite
Toilet system	electric (2023)
Wash basin	in the bathroom
Shower	en suite
Guest cabin 2	bunk bed
Wardrobe	hanging and shelves
Bathroom	shared
Toilet	shared
Toilet system	electric (2023)
Wash basin	in the bathroom
Shower	en suite

MACHINERY

No of engines	1
Make	Nanni
Type	4.330
HP	115
kW	84.64
Fuel	diesel
Year of overhaul	2023
Cruising speed (kn)	7
Engine cooling system	freshwater heat exchanger
Drive	shaft



ED BURNETT 58 LOD CLASSIC SCHOONER

Shaft seal	yes
Engine controls	bowden cable
Gearbox	hydraulic F 2.20:1 hydraulic transmission (2007, overhauled in 2023)
Bowthruster	electric
Exhaust	watercooled
Thrust bearing	Python thrust bearing (2023)
Propeller type	Max-Prop Whisper 5-blade (2023)
Shaft lubrication	water
Manual bilge pump	yes
Electric bilge pump	Automatic
Electrical installation	12V/220V
Generator	silent separator Mastervolt 6Kw
Batteries	yes
Start battery	yes
Service battery	Mastervolt lithium-ion batteries (aft cabin)
Battery monitor	yes
Battery charger	Mastervolt shore AC-charger
Battery charger/inverter	(Mastervolt combo)
Shorepower	with cable 2 shore power

NAVIGATION

Compass	Lewmar helm-comfort kompas
Multi control display	B&G Hydra 2000 display
Depth sounder/log	Hydra 2000 combo
Windset	yes
VHF	Simrad RS 82 (vast)
Autopilot	Simrad AP24
Radar	Simrad radar (2020)
Radar/GPS/plotter	Simrad CX44 (2020)
Navtex	Furuno



ED BURNETT 58 LOD CLASSIC SCHOONER

AIS transceiver	yes
EPIRB	yes
Navigation lights	yes

EQUIPMENT

Sprayhood with grab rail	(2023)
Cockpit cushions	(2023)
Cockpit table	yes
Deck shower	yes
Anchor	yes
Anchor chain	yes
Windlass	electrical
Deck wash	yes
Sea railing	wire
Grab rail (superstructure)	wood
Railing side opening gates	yes
Pushpit	yes
Pulpit	yes
Radar reflector	yes
Fenders	yes
Mooring lines	yes
Tools	yes
TV	yes
Radio	yes
Clock - barometer	yes

RIGGING

Rigging	gaff-rig
Standing rigging	wire
Brand mast	Freeland Yacht Spars
Material mast	wood Douglas fir



ED BURNETT 58 LOD CLASSIC SCHOONER

Keel stepped mast	yes
Mainsail cover	yes
Battcars	All-bearing luff cars (new in 2023 refit)
Fully battened mainsail	Ratsey 3DL (2023)
Cutterstay	(2022-2023)
Main staysail	Ratsey & Lapthorn (2023)
Topsail	Ratsey & Lapthorn / Karver furler (2023)
Mizzen	Ratsey & Lapthorn / Karver furler (2023)
Mizzen sailcover	(2023)
Jib	Ratsey & Lapthorn / Karver furler (2023)
Genoa	Ratsey & Lapthorn (2023)
Genoa furler	Reckmann electric (2023)
Genoa cover	UV-strip (2023)
Cutter furler	Karver (2023)
Staysail	Ratsey & Lapthorn (2023)
Staysail furler	Karver (2023)
Removable innerforestay	yes
Reefing System	slabreefing
Backstay adjuster	hydraulic (2023)
Boomvang	hydraulic (2023)
Primary sheet winch	Andersen 52 ST (2023)
Secondary sheet winch	Andersen 52 ST (2023)
Genoa sheetwinches	Andersen 46 ST electric (2023)
Halyard winches	yes
Reefing winch	yes
Multifunctional winches	yes
Winchcovers	yes
Extra info	Backstays: Dyneema



ED BURNETT 58 LOD CLASSIC SCHOONER



ED BURNETT 58 LOD CLASSIC SCHOONER



ED BURNETT 58 LOD CLASSIC SCHOONER



ED BURNETT 58 LOD CLASSIC SCHOONER



ED BURNETT 58 LOD CLASSIC SCHOONER



ED BURNETT 58 LOD CLASSIC SCHOONER



ED BURNETT 58 LOD CLASSIC SCHOONER



ED BURNETT 58 LOD CLASSIC SCHOONER



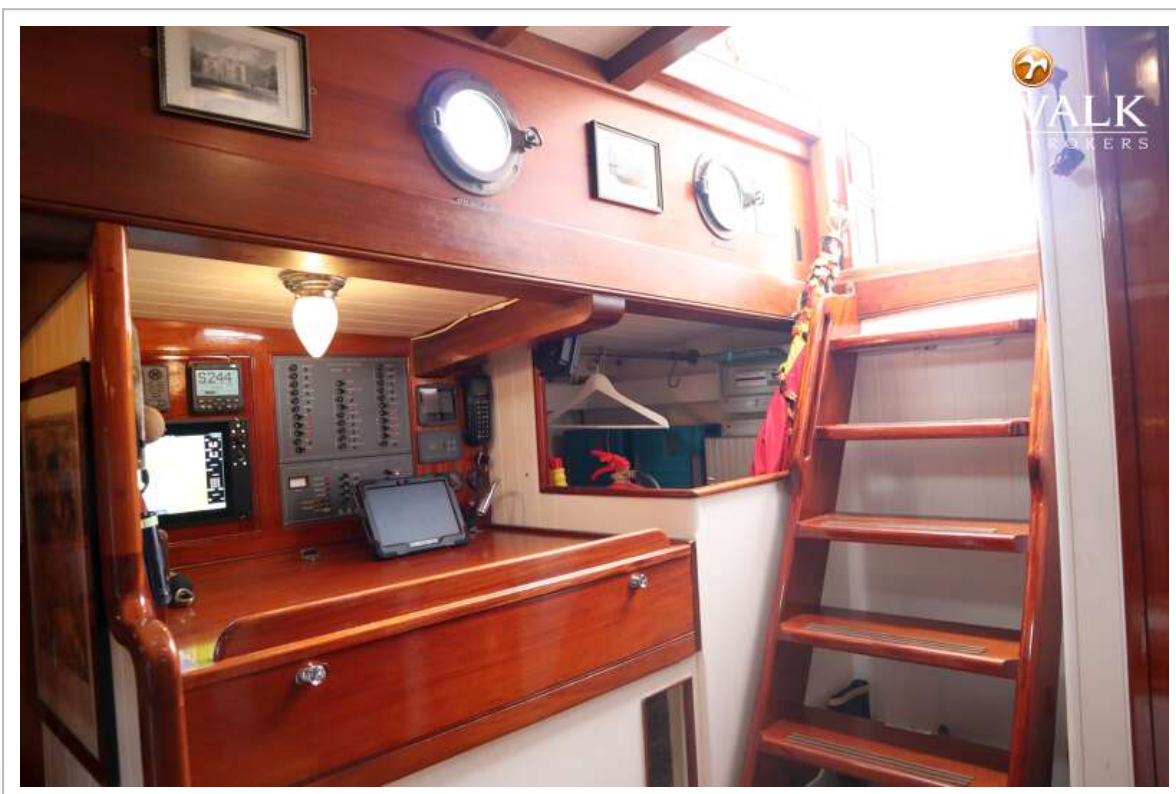
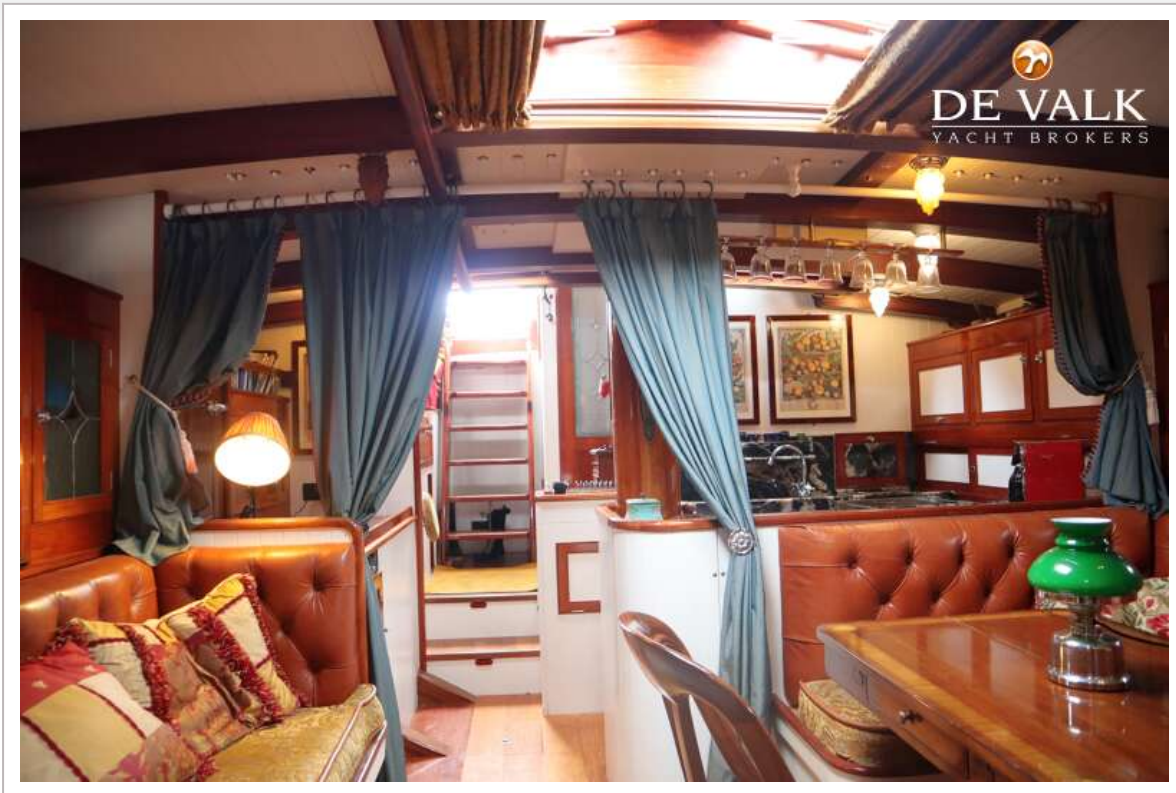
ED BURNETT 58 LOD CLASSIC SCHOONER



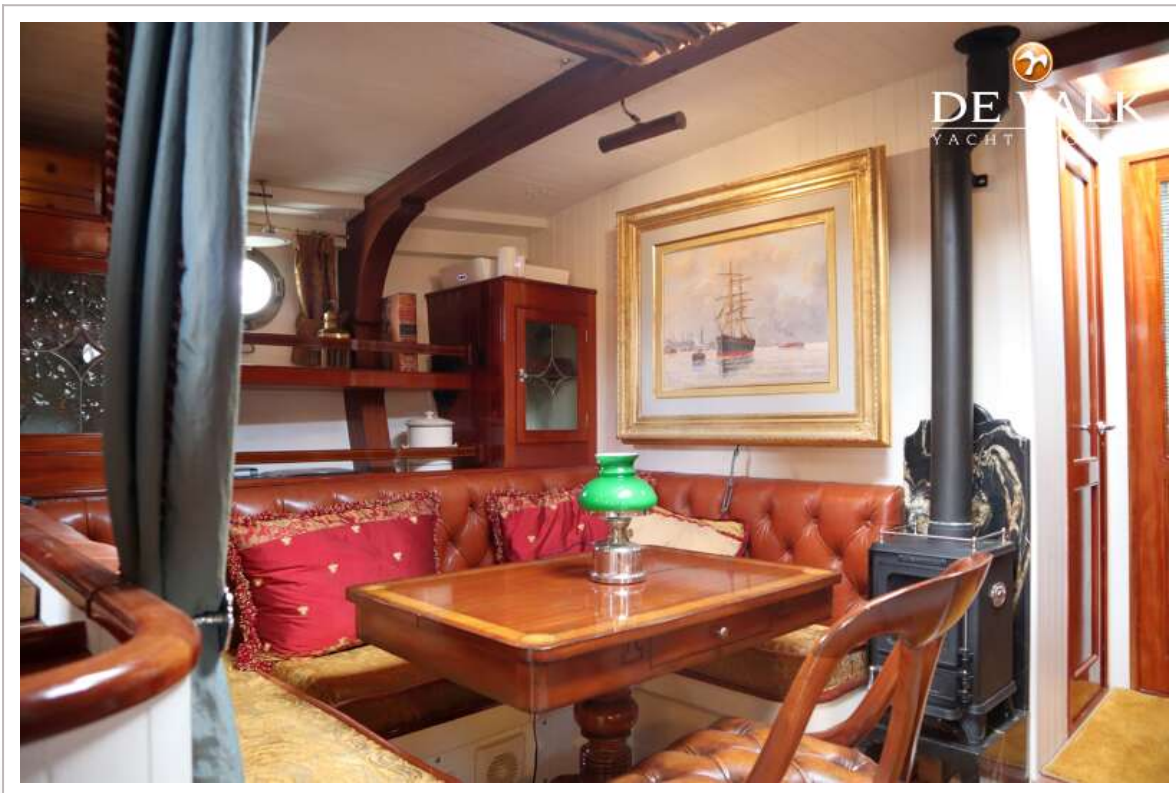
ED BURNETT 58 LOD CLASSIC SCHOONER



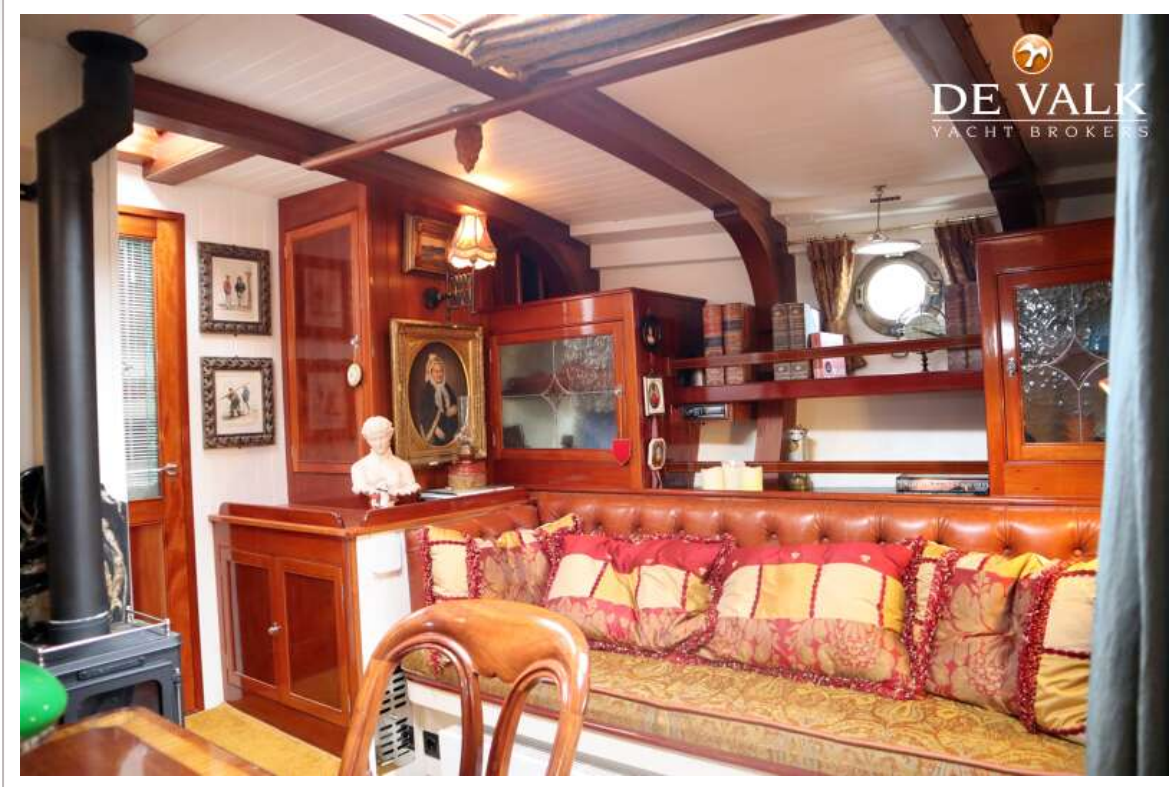
ED BURNETT 58 LOD CLASSIC SCHOONER



ED BURNETT 58 LOD CLASSIC SCHOONER



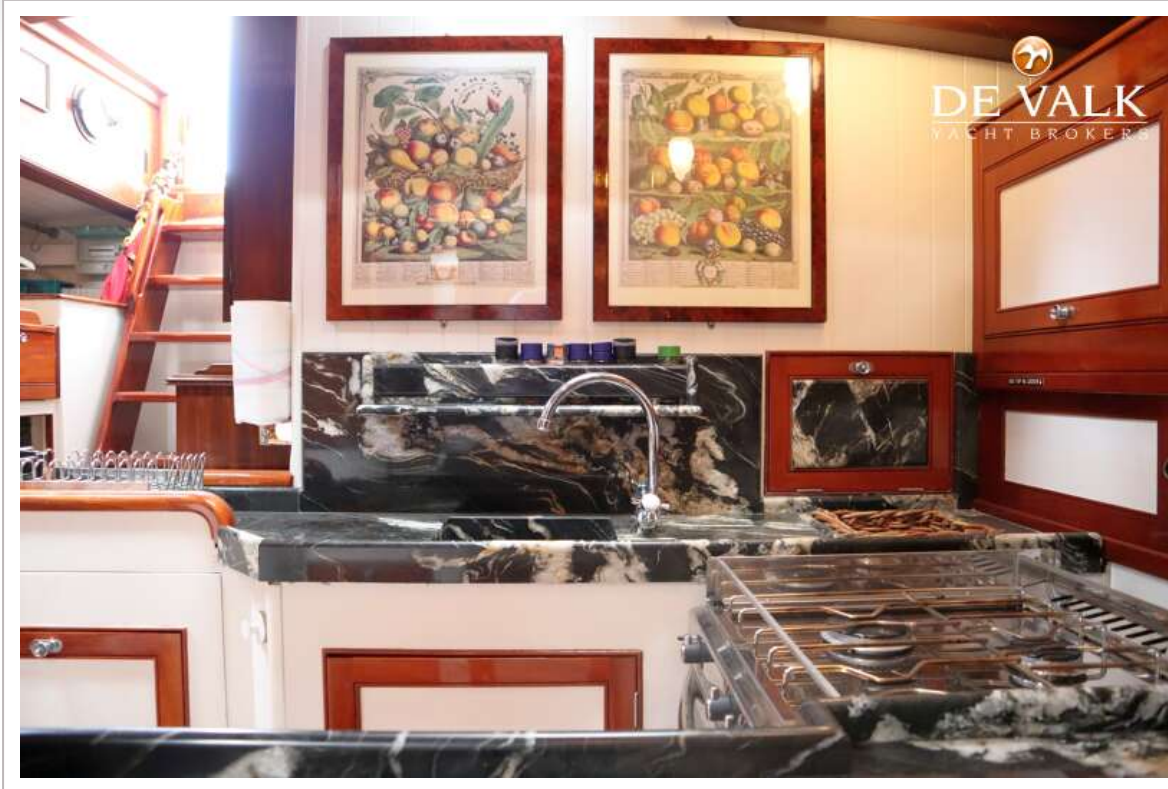
ED BURNETT 58 LOD CLASSIC SCHOONER



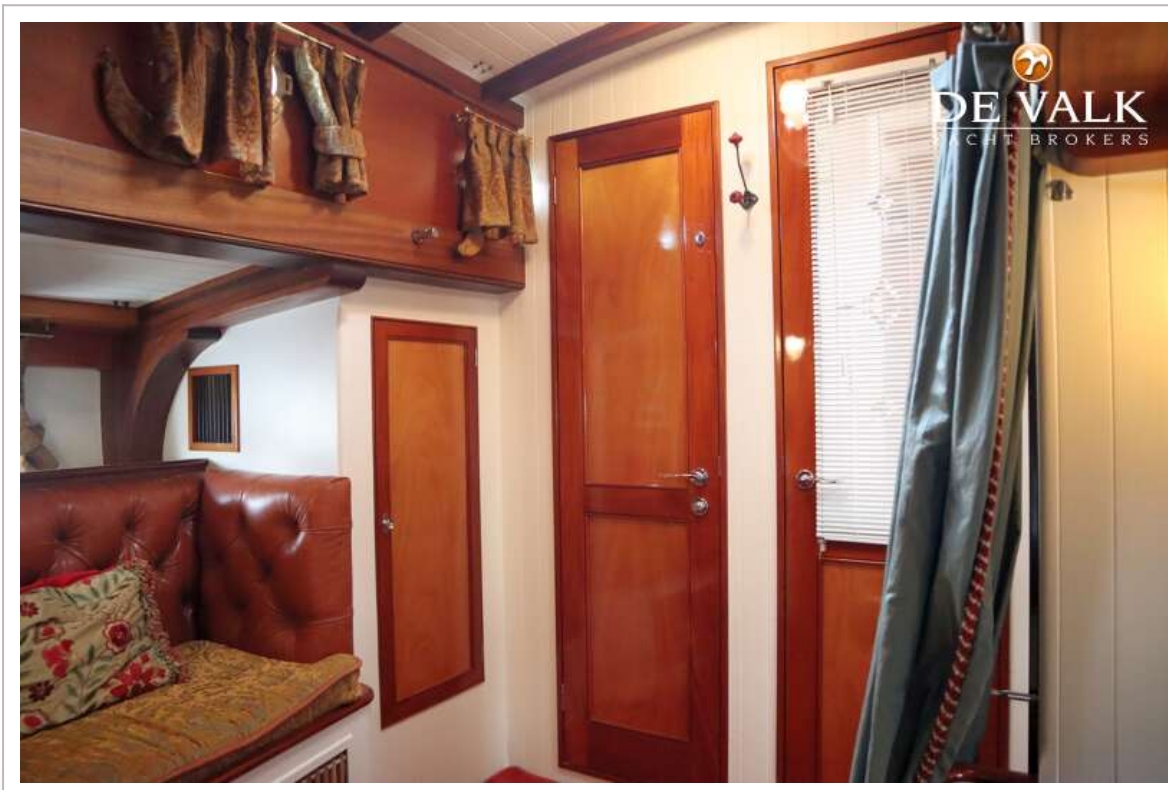
ED BURNETT 58 LOD CLASSIC SCHOONER



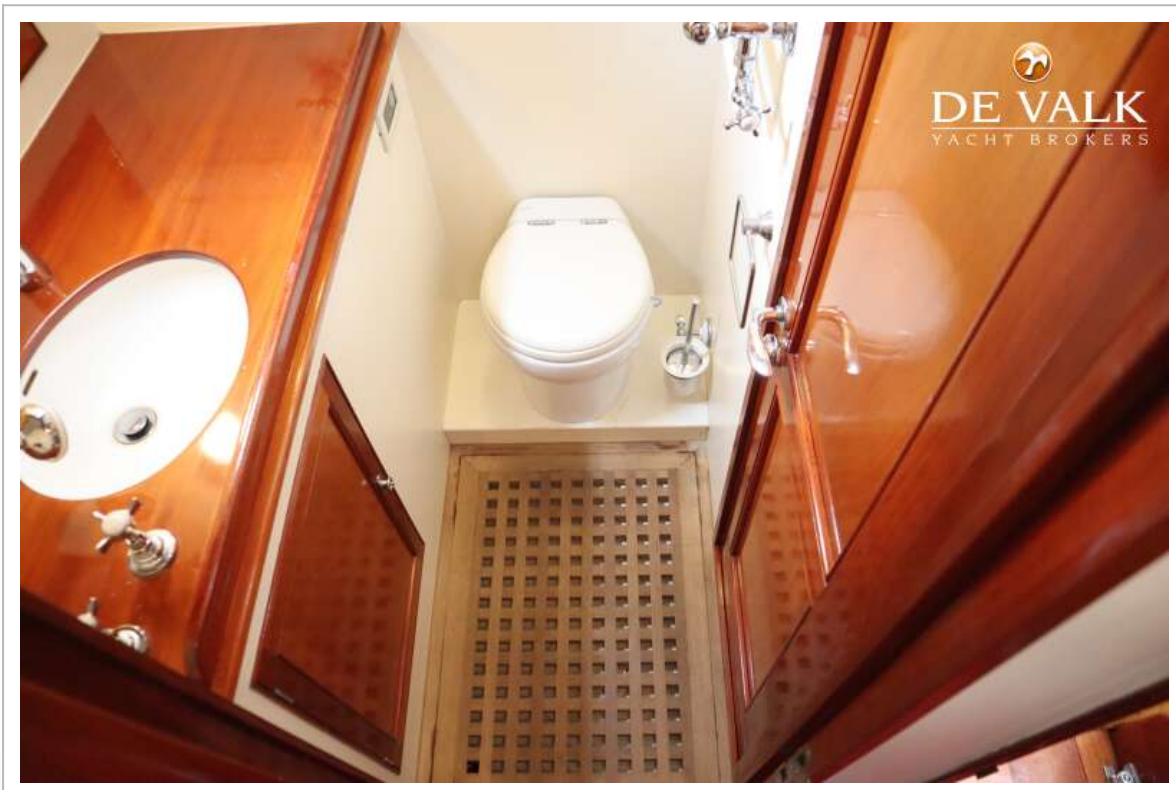
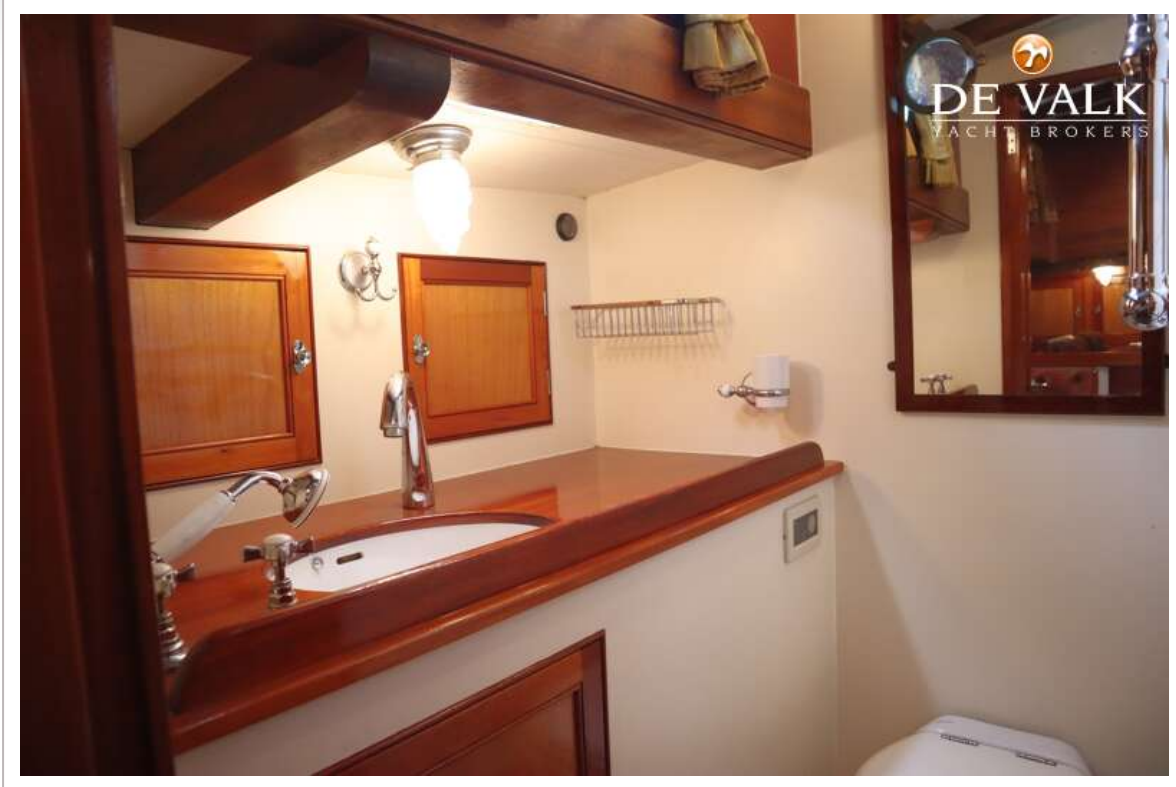
ED BURNETT 58 LOD CLASSIC SCHOONER



ED BURNETT 58 LOD CLASSIC SCHOONER



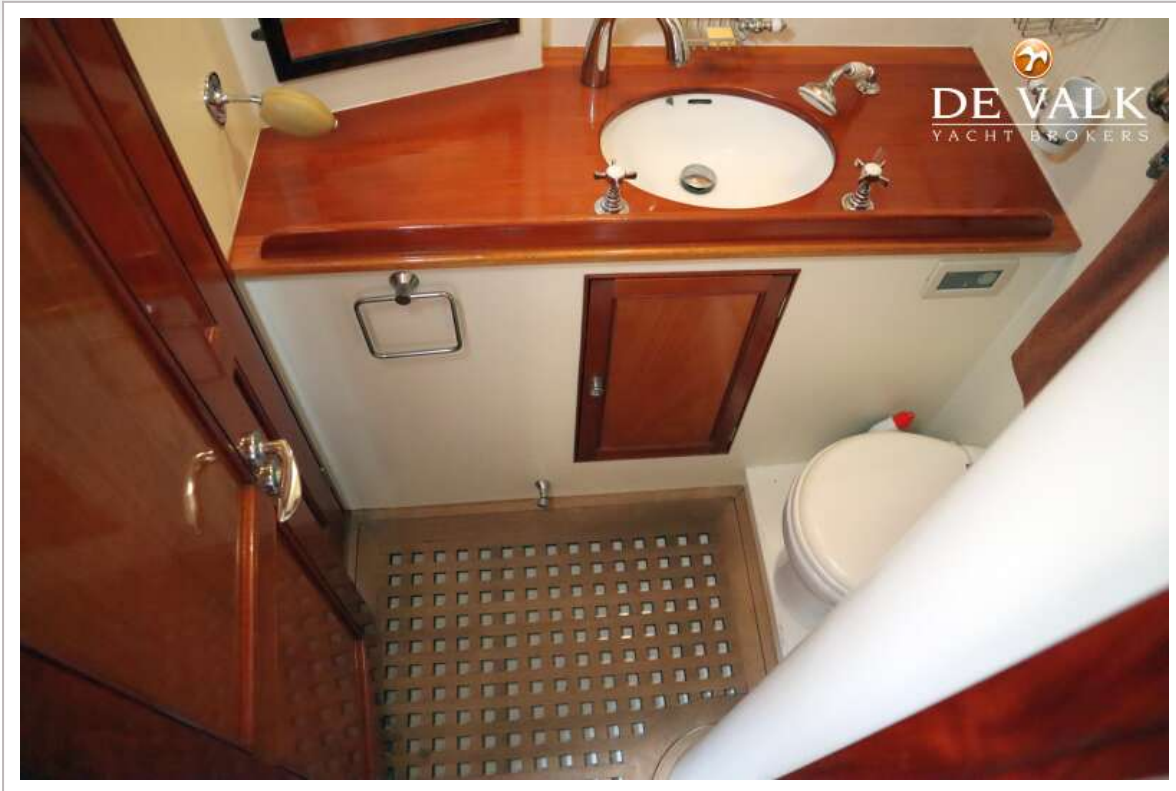
ED BURNETT 58 LOD CLASSIC SCHOONER



ED BURNETT 58 LOD CLASSIC SCHOONER



ED BURNETT 58 LOD CLASSIC SCHOONER



ED BURNETT 58 LOD CLASSIC SCHOONER

