



LIVE ABOARD MY WITH BERTH IN AMSTERDAM

# LIVE ABOARD MY WITH BERTH IN AMSTERDAM

## BROKER'S COMMENTS

Live aboard MY "Frisia XV", completely renovated in 2019-2021. Approx. 240m2 living area, Approx. 540m3, Approx. 124 m2 terrasses! The asking price includes her berth, 10 minutes from Amsterdam city centre. Sail away without bridges into the inland waterways. Much attention to insulation, fresh air, central heating and running the whole vessel on a very low energy level. Her layout is easy to convert for other possibilities as: home office, seperate B&B, luxury charter etc. Where do you find a comfortable luxury house and the freedom to sail away directly? Contact us for more information.

*Reinier van der Wolf*

## SPECIFICATIONS

<b>Dimensions</b>	39.60 x 6.60 x 1.40 (m)	<b>Builder</b>	Meyer Werft, Papenburg
<b>Built</b>	2020	<b>Cabins</b>	7
<b>Material</b>	Steel	<b>Berths</b>	13
<b>Engine(s)</b>	2 x DAF 1160 diesel	<b>Hp/Kw</b>	2 x 168.00 (hp), 123.65 (kw)
<b>Asking price</b>	on request (VAT )	<b>Lying</b>	contact Monnickendam

## CONTACT

<b>Sales office</b>	De Valk Monnickendam B.V.	<b>Telephone</b>	+31 (0)299 65 63 50
<b>Address</b>	Hoogedijk 6 1145 PM Katwoude NL	<b>E-mail</b>	monnickendam@devalk.nl

## DISCLAIMER

These particulars are given in good faith as supplied but cannot be guaranteed.



# LIVE ABOARD MY WITH BERTH IN AMSTERDAM

## GENERAL

<b>Model</b>	LIVE ABOARD MY WITH BERTH IN AMSTERDAM
<b>Type</b>	motor yacht
<b>LOA (m)</b>	39,60
<b>Beam (m)</b>	6,60
<b>Draft (m)</b>	1,40
<b>Year built</b>	2020
<b>Launched</b>	2020, explanation: Completed in 1949 at the Meijer Werft in Papenburg, Germany. Frisia XV is completely renovated in the period 2019-2021. The renovation is carried out by o.a.: SRF, JSF jachtservice and builders, AP marine propulsion systems, Donker Veenstra, Multiship Harlingen, HJF De Koning stoffering, and many other companies.
<b>Builder</b>	Meyer Werft, Papenburg
<b>Country</b>	Germany
<b>Displacement (t)</b>	145
<b>Ballast (tonnes)</b>	concrete
<b>CE norm</b>	NA
<b>Hull material</b>	steel
<b>Hull colour</b>	white
<b>Hull thickness (mm)</b>	From 6mm till 8 mm
<b>Hull shape</b>	flat bottom
<b>Superstructure material</b>	steel
<b>Rubbing strake</b>	steel
<b>Deck material</b>	steel
<b>Deck finish</b>	synthetic teak
<b>Superstructure deck finish</b>	paint
<b>Cockpit deck finish</b>	synthetic teak
<b>Antifouling (year)</b>	05-2025
<b>Window frame</b>	polymer   Triple layer insulation windows in Polymer frames
<b>Window material</b>	Triple layer insulation windows
<b>Portholes</b>	yes
<b>Insulation</b>	foam   Approx. 15 cm foam. ** See explanation



# LIVE ABOARD MY WITH BERTH IN AMSTERDAM

<b>Fuel tank (litre)</b>	stainless steel   Approx. 4000 litre
<b>Level indicator (fuel tank)</b>	Can be viewed in the Yachtcontrol system
<b>Freshwater tank (litre)</b>	polyethylene   Approx. 5400 litre
<b>Level indicator (freshwater)</b>	Can be viewed in the Yachtcontrol system
<b>Blackwater tank (litre)</b>	polyethylene   Approx. 2700 litre
<b>Level indicator (blackwater)</b>	Can be viewed in the Yachtcontrol system
<b>Blackwater tank extraction</b>	deck extraction + pump
<b>Wheel steering</b>	hydraulic
<b>Inside helm position</b>	yes
<b>More info on paintwork</b>	Completely new painted in 2020 during the renovation.
<b>Extra info</b>	** Approx. 15 cm foam insulation till the waterline. On a couple of places PIR insulation plates are used for insulation.
<b>Extra info</b>	CVO certified, renewed in 09-2025 for a period of 7 years.
<b>Extra info</b>	The asking price includes her berth at the Cas Oorthyskade in Amsterdam, size approx. 40 x 6.75m, lease paid till 2065. Entrance house with: mailbox, door with code and storage. You walk via a concrete pontoon to the berth of "Frisia XV". A terrace and possibility to moor a small boat in front of the berth. The annual costs are approx. € 1061,-, the costs for the homeowners association is approx. € 132,- per month. The costs for transfer the ownership are for the expense of the buyer. Buying Frisia XV without the berth is also possible, to buy only her berth is not an option.

## ACCOMMODATION

<b>Cabins</b>	7
<b>Berths</b>	13
<b>Crew cabin</b>	At this moment there isn't a crew cabin, but there is the possibility to convert the front cabin into a separate cabin for crew, with own entrance.
<b>Interior</b>	Modern interior designed by: Egbert Duijn architect+



# LIVE ABOARD MY WITH BERTH IN AMSTERDAM

<b>Layout</b>	From top till bottom: Large wheelhouse, office desks on both sides and seating area with woodstove and flatscreen. Entrance to one of the aftdecks (Approx. 6 x 4m) by a sliding door. Second level: Entrance hall, in front a relax area, large eat-in-kitchen, sliding door to a staircase to the aftdeck (approx. 8 x 5,50m), corridor with office desk, television room with the possibility for a double berth, day toilet, owners cabin in aft ship with French berth, large wardrobe, private bathroom (shower/washbowl/toilet) Lower level" Two bedrooms with double berth and sink, three bedrooms with single berth and sink, wardrobes and washbowl at the corridor, laundry and storage, cabin with French berth/bathroom/office desk.
<b>Floor</b>	wood
<b>Aft deck</b>	Two large aft decks: Approx 6 x 4m and approx. 8 x 5,50m.
<b>Saloon</b>	yes
<b>Heating</b>	central heating   NIBE heat pump
<b>Heating 2</b>	central heating   Kabola KB40
<b>Navigation center</b>	yes
<b>Chart table</b>	yes
<b>Dining room</b>	yes
<b>Sliding door to aft deck</b>	yes
<b>Galley</b>	yes
<b>Countertop</b>	stainless steel
<b>Sink</b>	stainless steel   Double stainless steel sink
<b>Cooker</b>	induction   Siemens Studio Line 4 burner induction cooker
<b>Extractor</b>	yes
<b>Microwave/oven combi</b>	1 x Siemens Studio Line Oven/steam oven, 1 x Siemens oven/microwhave
<b>Fridge</b>	2 x 320 litre Siemens fridge
<b>Freezer</b>	1 x 320 litre Siemens freezer
<b>Hot water system</b>	on central heating
<b>Water pressure system</b>	electrical
<b>Dishwasher</b>	Siemens
<b>Owners cabin</b>	French bed   In the stern
<b>Wardrobe</b>	hanging and shelves   Large built-in wardrobe



# LIVE ABOARD MY WITH BERTH IN AMSTERDAM

<b>Bathroom</b>	en suite
<b>Wash basin</b>	Double wash basin
<b>Shower</b>	yes
<b>Guest cabin 1</b>	French bed   In the front, with office desk, possibility for own entrance
<b>Bathroom</b>	en suite
<b>Toilet</b>	yes
<b>Toilet system</b>	electric
<b>Wash basin</b>	yes
<b>Shower</b>	yes
<b>Guest cabin 2</b>	double bed
<b>Wardrobe</b>	At the corridor
<b>Wash basin</b>	yes
<b>Guest cabin 3</b>	double bed
<b>Wardrobe</b>	At the corridor
<b>Wash basin</b>	yes
<b>Guest cabin 4</b>	single bed
<b>Guest cabin 5</b>	single bed
<b>Wardrobe</b>	At corridor
<b>Guest cabin 6</b>	single bed
<b>Wash basin</b>	yes
<b>Washing machine</b>	Placed in the laundry   Bosch serie 6
<b>Dryer</b>	Placed in the laundry   Bosch serie 4
<b>Extra info</b>	Approx. 240m <sup>2</sup> living area, Approx. 540m <sup>3</sup> , Approx. 124 m <sup>2</sup> terrasses! These dimensions were not measured via the nen 2580 measurement method, no rights can be derived from this.

## MACHINERY

<b>No of engines</b>	2
<b>Make</b>	DAF
<b>Type</b>	1160
<b>HP</b>	168



# LIVE ABOARD MY WITH BERTH IN AMSTERDAM

<b>kW</b>	123.65
<b>Fuel</b>	diesel
<b>Year of overhaul</b>	2019, a complete rebuilt of both DAF engines and the ZF gearboxes
<b>Engine cooling system</b>	freshwater heat exchanger
<b>Drive</b>	shaft
<b>Engine controls</b>	electrical   Morse
<b>Gearbox</b>	Two ZF BW 35 E45 gearboxes
<b>Bowthruster</b>	electric   380V bowthruster
<b>Thrust bearing</b>	yes
<b>Propeller type</b>	fixed
<b>Propeller blades</b>	4 bladed propellers
<b>Propeller shaft material</b>	steel
<b>Shaft lubrication</b>	grease   Automatic grease machine for the propellershafts and steering.
<b>Electric bilge pump</b>	yes
<b>Generator</b>	Partner LSA 44.1, 100kVa, 400V generator, Iveco diesel engine
<b>Start battery</b>	2 x 50ah Optima Red Top batteries for both engines (total: 4)
<b>Service battery</b>	Battery package of 12 x 2V cells with a total capacity of 1010Ah.
<b>Generator battery</b>	1x 50ah Optima Red Top
<b>Battery monitor</b>	Can be read in the Yachtcontrol sytems and several screens throughout the ship.
<b>Battery charger</b>	2 x Mastervolt Chargemaster plus 24/40-3
<b>Inverter</b>	3 x Mastervolt Mass Sine Ultra 24/4000
<b>Solar panel</b>	On the upper roof are 20 solar panels 340-380WP each, 2 x Mastervolt MPPT Solar chargemaster 60.
<b>Shorepower</b>	with cable
<b>Insulation transformer</b>	Weseman transformer, 44 kVa
<b>Watermaker</b>	There is no watermaker installed but the systems on board are already prepared and the connections are there.
<b>Extra info</b>	ORCON WTU 800 heat recovery system
<b>Extra info</b>	AERIS air ventilation and filter sytem throughout the whole ship



## NAVIGATION

Depth sounder	Via the Yachtcontrol system
Log	Via the Yachtcontrol system
Windset	Via the Yachtcontrol system
VHF	Simrad HS90
VHF handheld	Cobra handheld VHF
Autopilot	Simrad AP70 MK 2 autopilot
Rudder angle indicator	Via the Yachtcontrol system
Radar	There is currently no radar installed. The cables have been laid already and it is possible to add a Radar on the Yachtcontrol system.
Radar/GPS/plotter	2 digital screens in the wheelhouse who operate the Yachtcontrol system for navigation and functions on board.
AIS transponder	Em-Trak A100
Camera	There are several camera's installed to view the bow/stern/ps/sb/engine room
Navigation lights	yes

## EQUIPMENT

Boarding ladder	stainless steel
Transom door	yes
Gangway	Manual aluminum gangway
Deck shower	yes
Anchor	Two bow achors
Anchor chain	Approx. 50 meter galvanized chain
Anchor 2	Two sput poles to anchor till a depth of approx 4 meter
Windlass	electrical
Deck wash	yes
Deck crane	hydraulic   2000KG
Sea railing	stainless steel
Railing side opening gates	2 x bow, 2 x stern
Wiper	3 x pantograph wipers



# LIVE ABOARD MY WITH BERTH IN AMSTERDAM

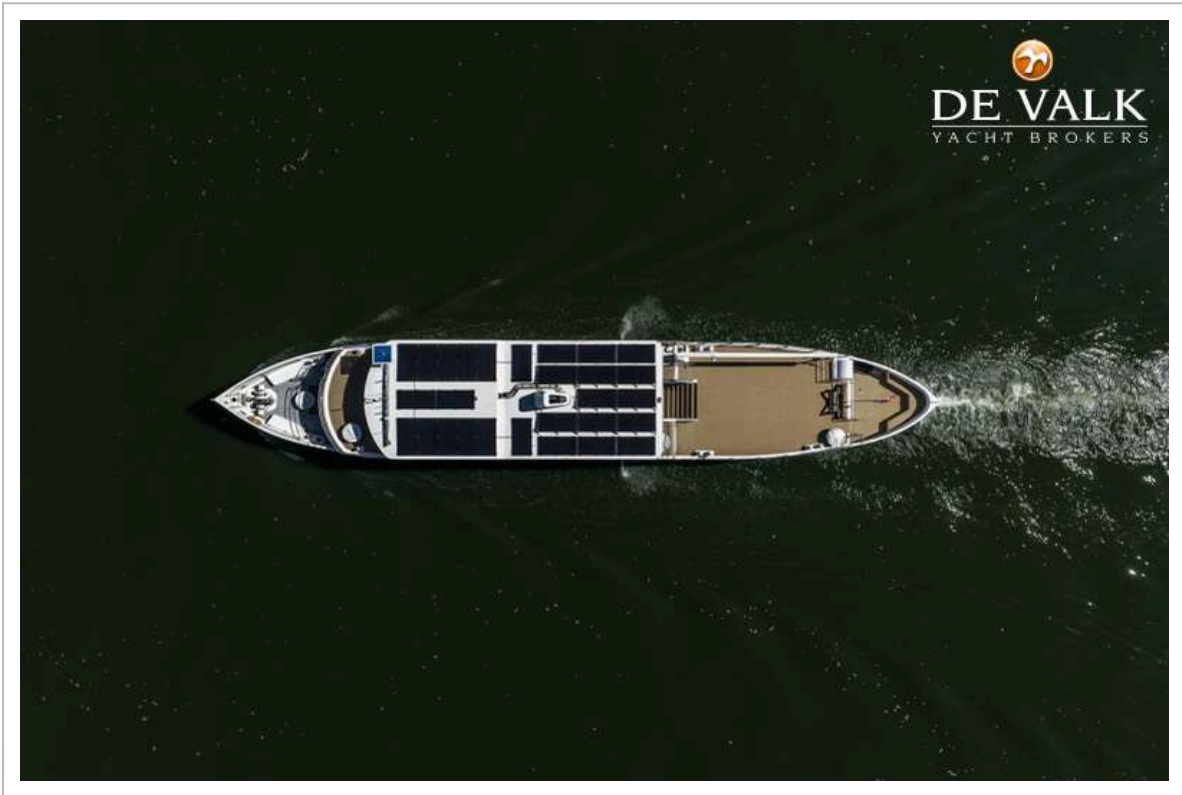
<b>Horn</b>	yes
<b>Fenders</b>	yes
<b>Mooring lines</b>	yes
<b>TV</b>	In the television room
<b>Surround Sound System</b>	In the television room
<b>Fire extinguisher</b>	yes
<b>Extinguisher in engine room</b>	FirePro



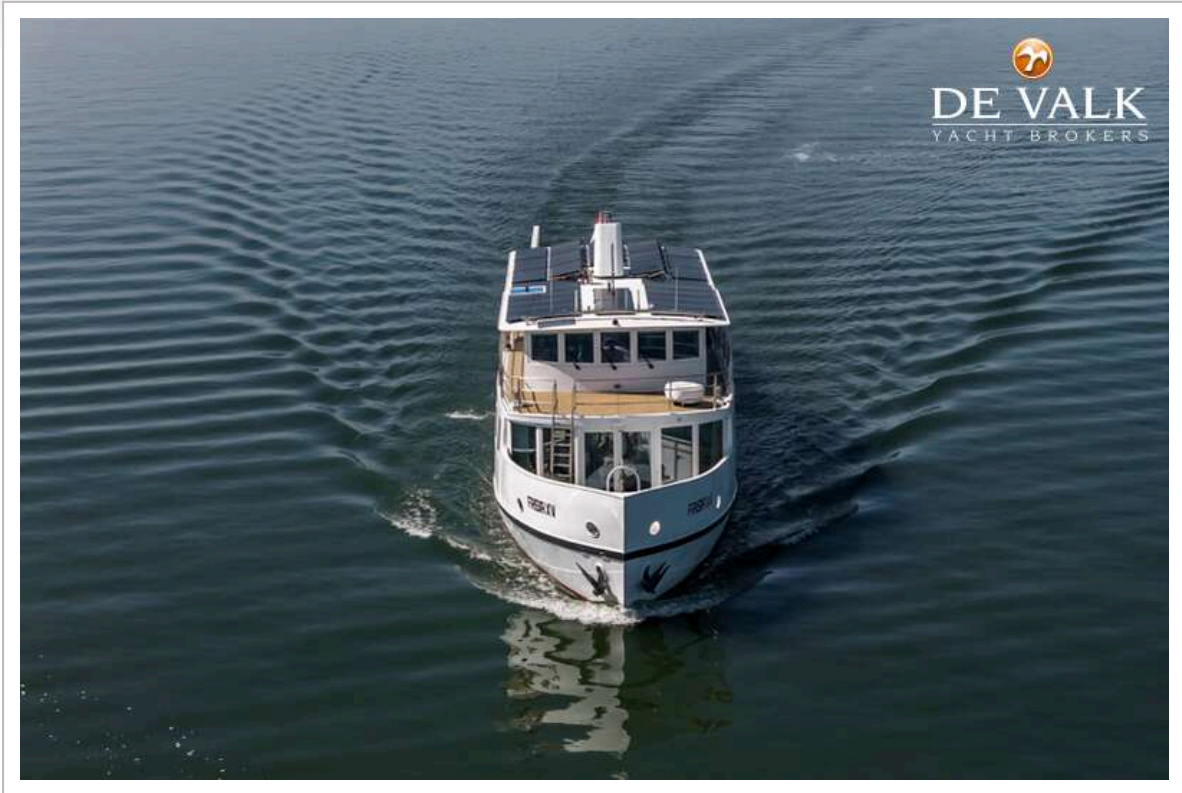
LIVE ABOARD MY WITH BERTH IN AMSTERDAM



LIVE ABOARD MY WITH BERTH IN AMSTERDAM



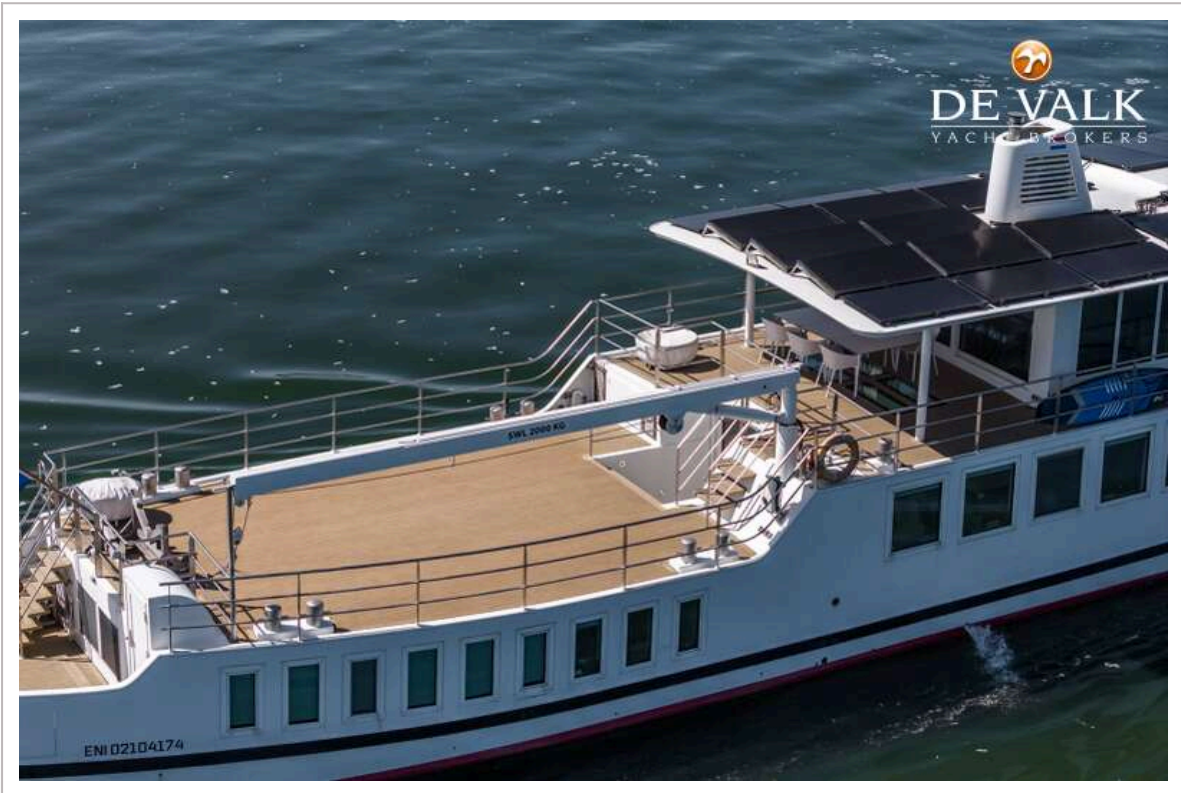
LIVE ABOARD MY WITH BERTH IN AMSTERDAM



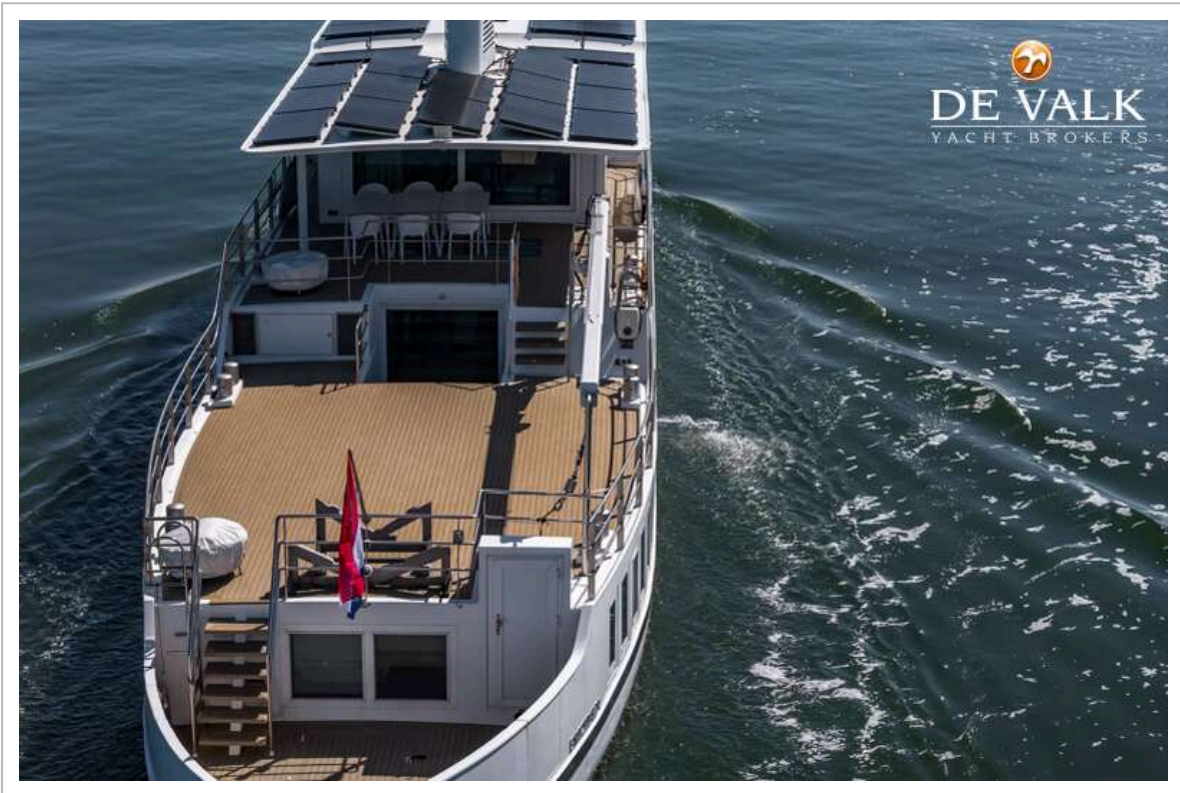
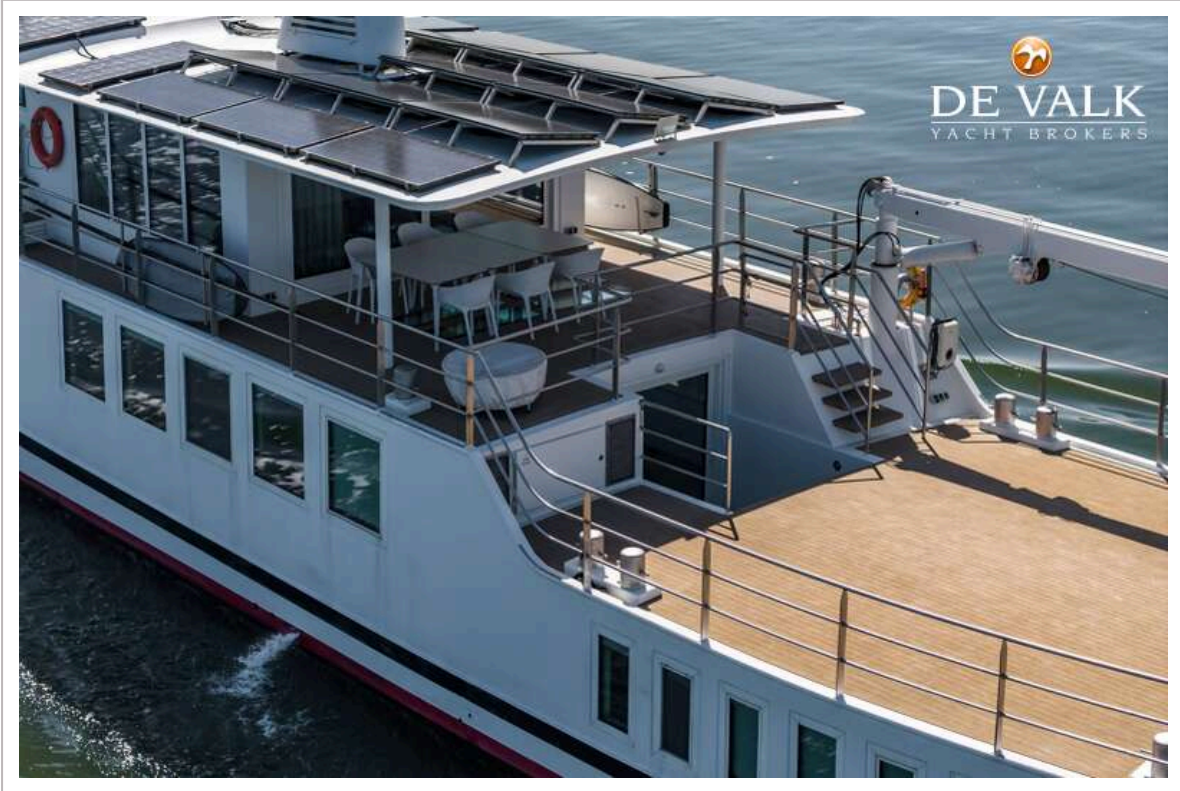
LIVE ABOARD MY WITH BERTH IN AMSTERDAM



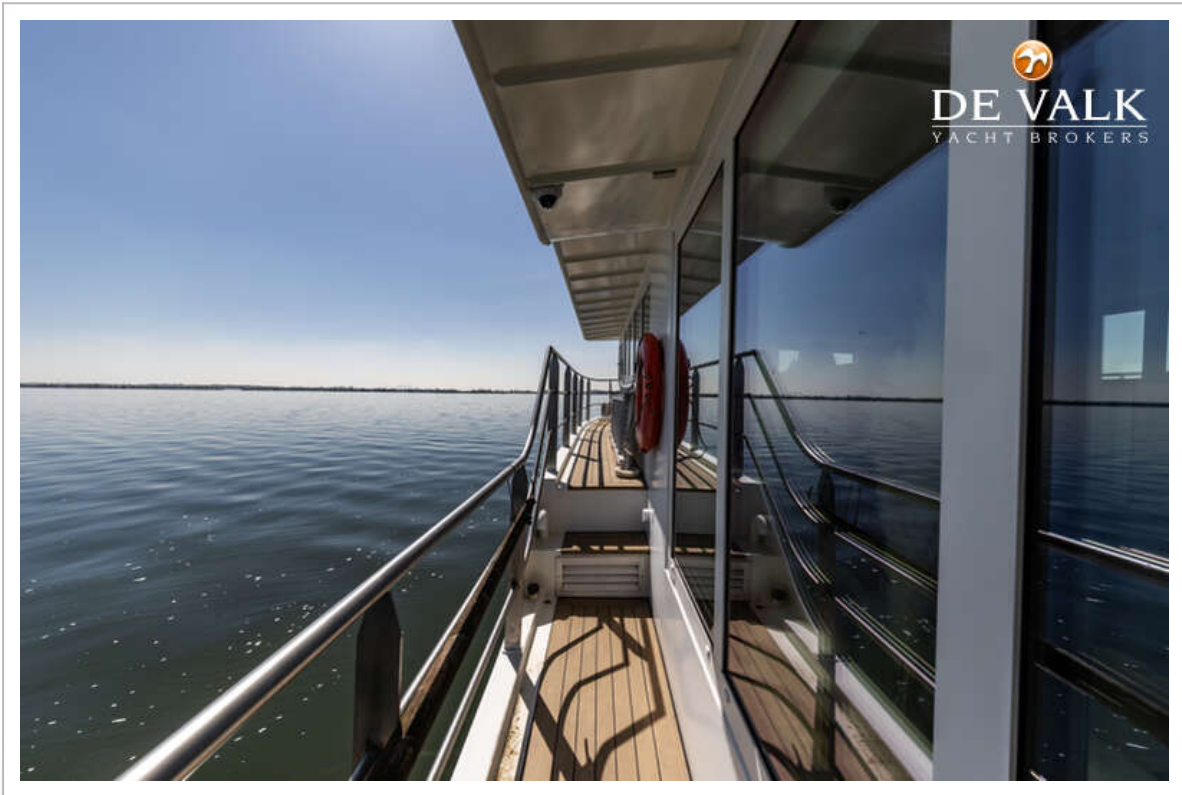
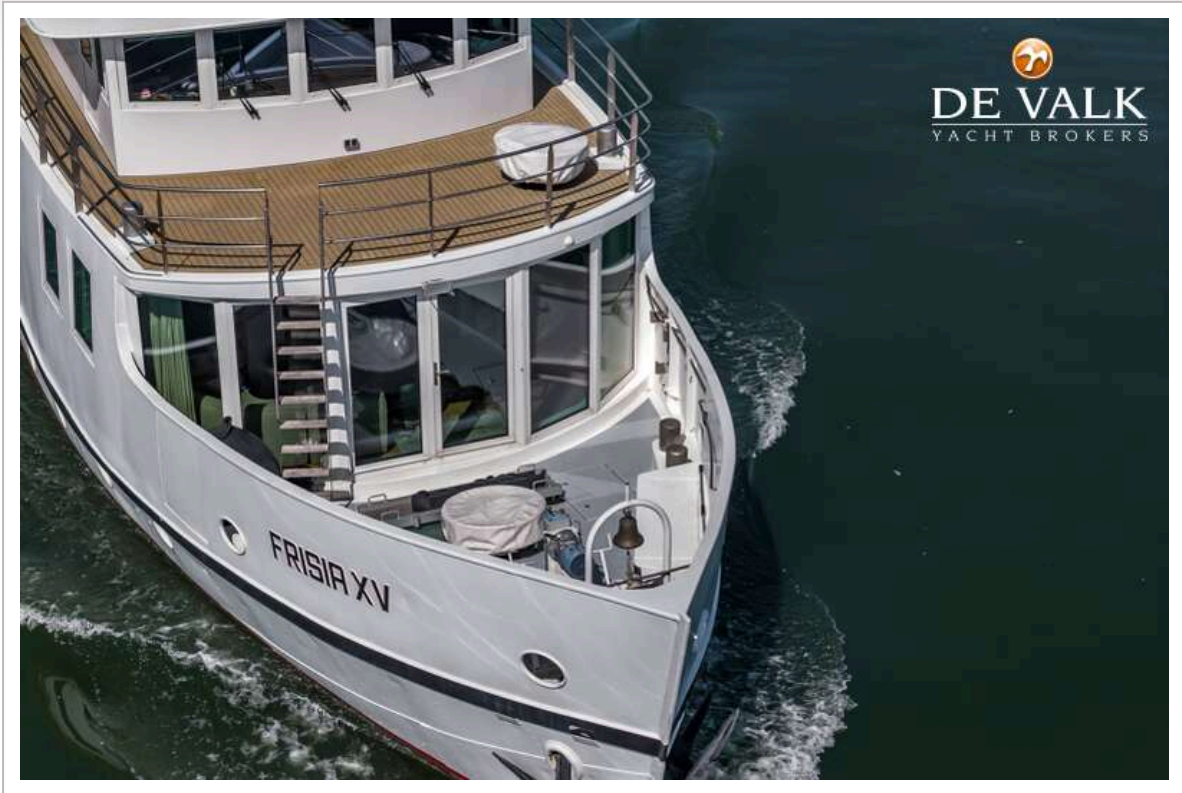
LIVE ABOARD MY WITH BERTH IN AMSTERDAM



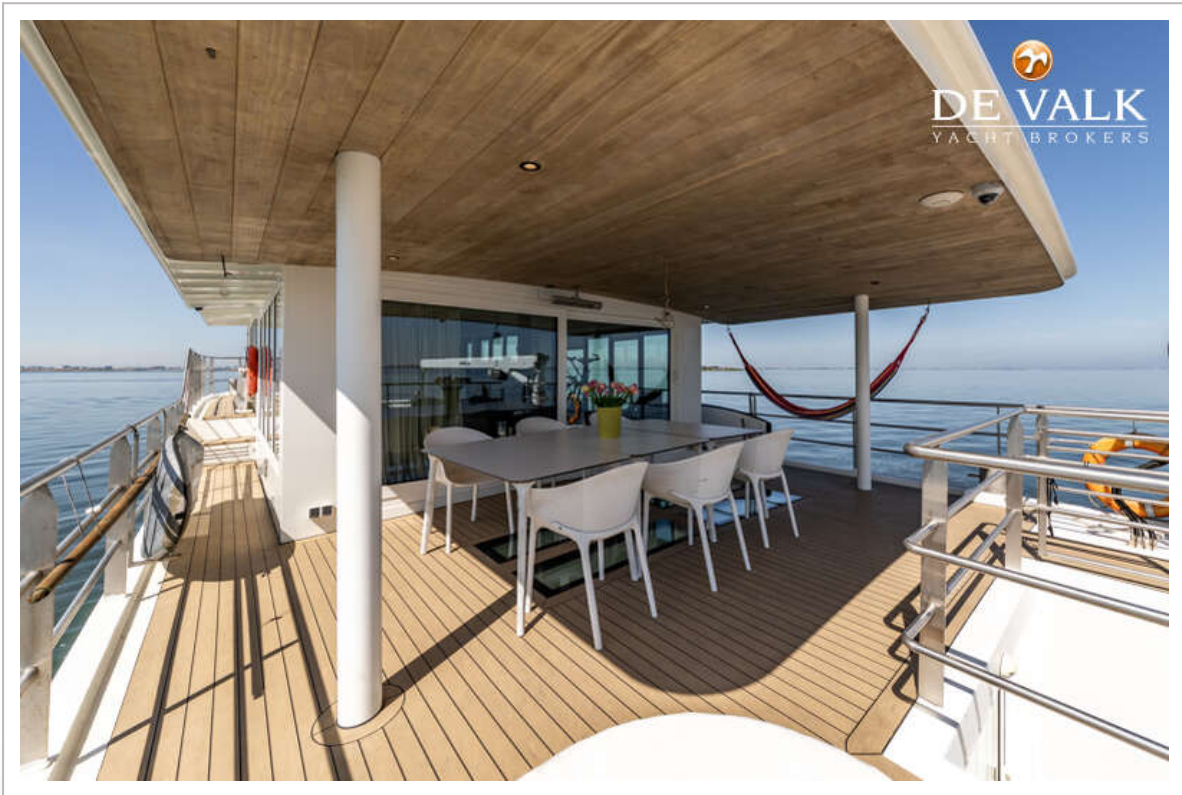
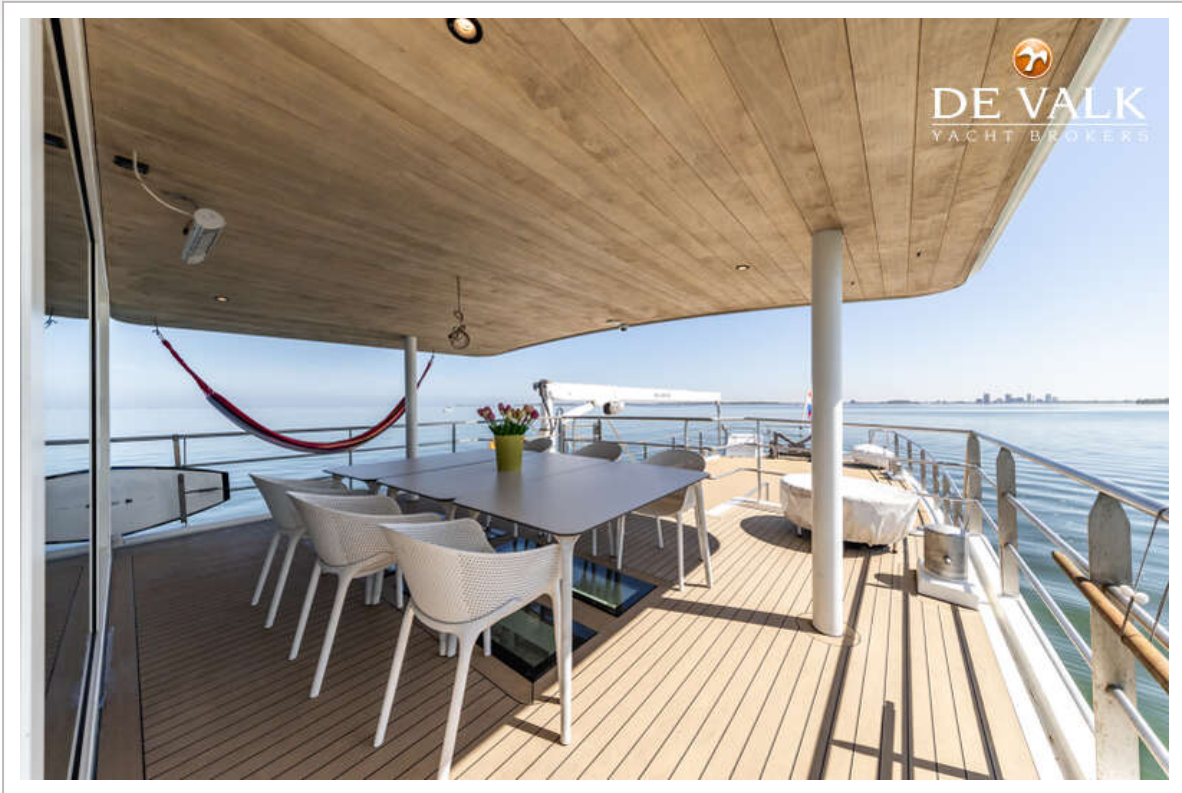
LIVE ABOARD MY WITH BERTH IN AMSTERDAM



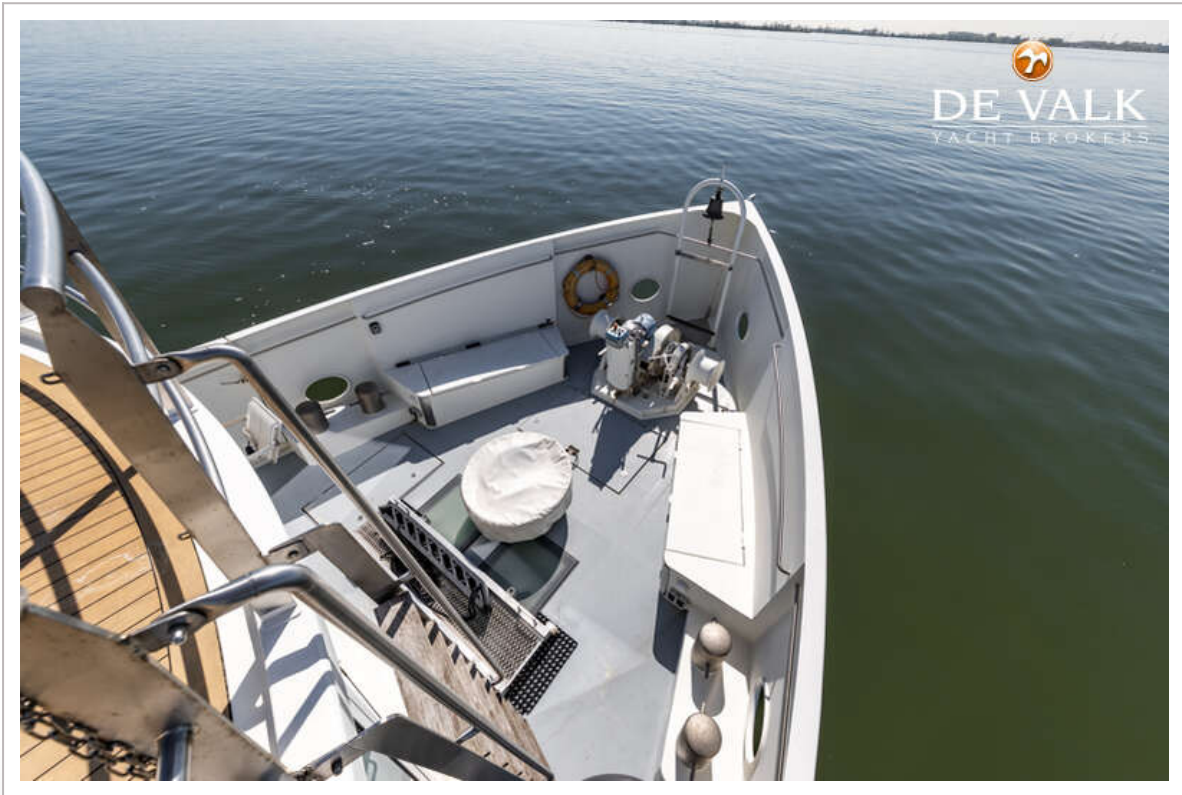
LIVE ABOARD MY WITH BERTH IN AMSTERDAM



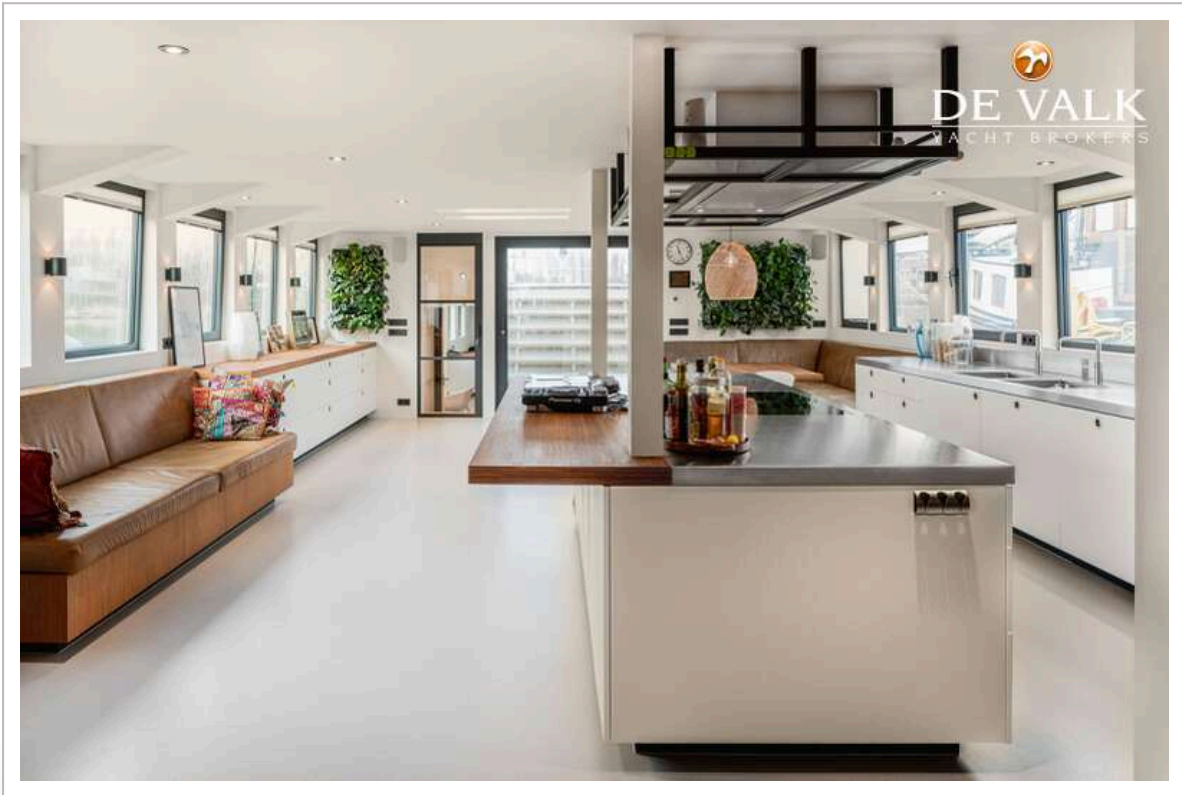
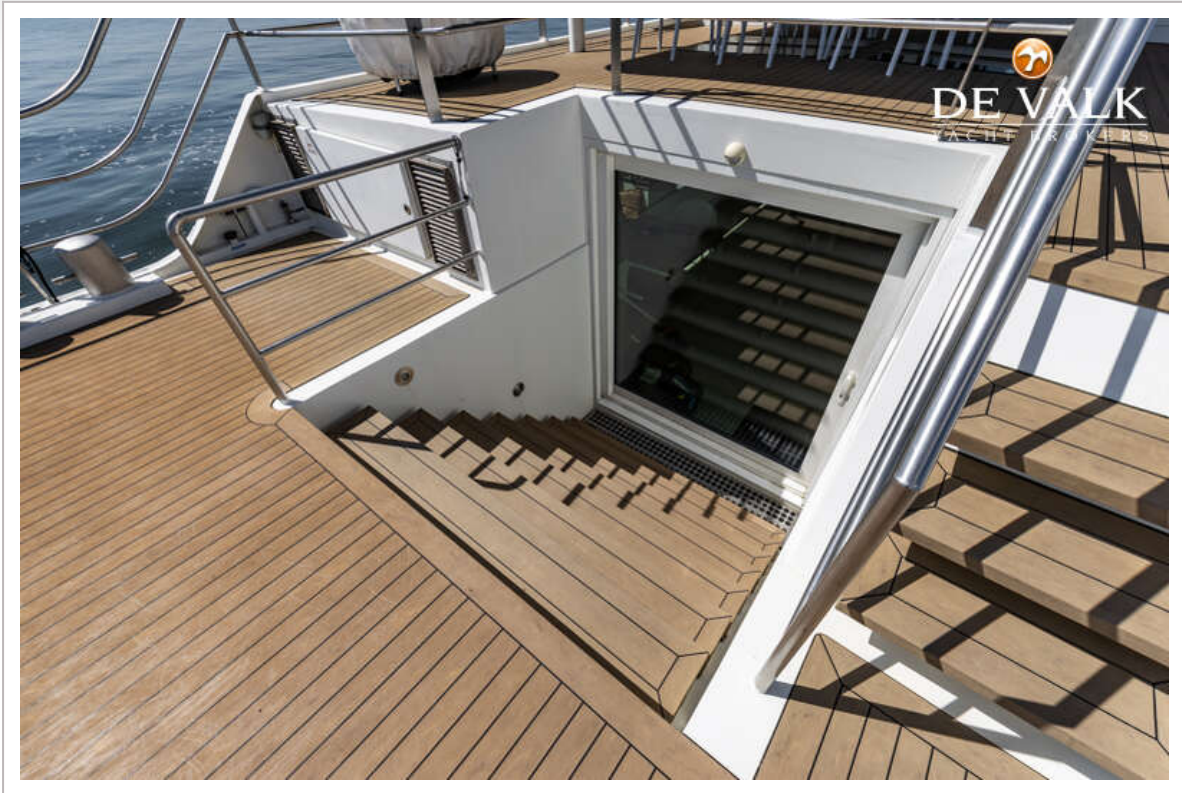
LIVE ABOARD MY WITH BERTH IN AMSTERDAM



LIVE ABOARD MY WITH BERTH IN AMSTERDAM



LIVE ABOARD MY WITH BERTH IN AMSTERDAM



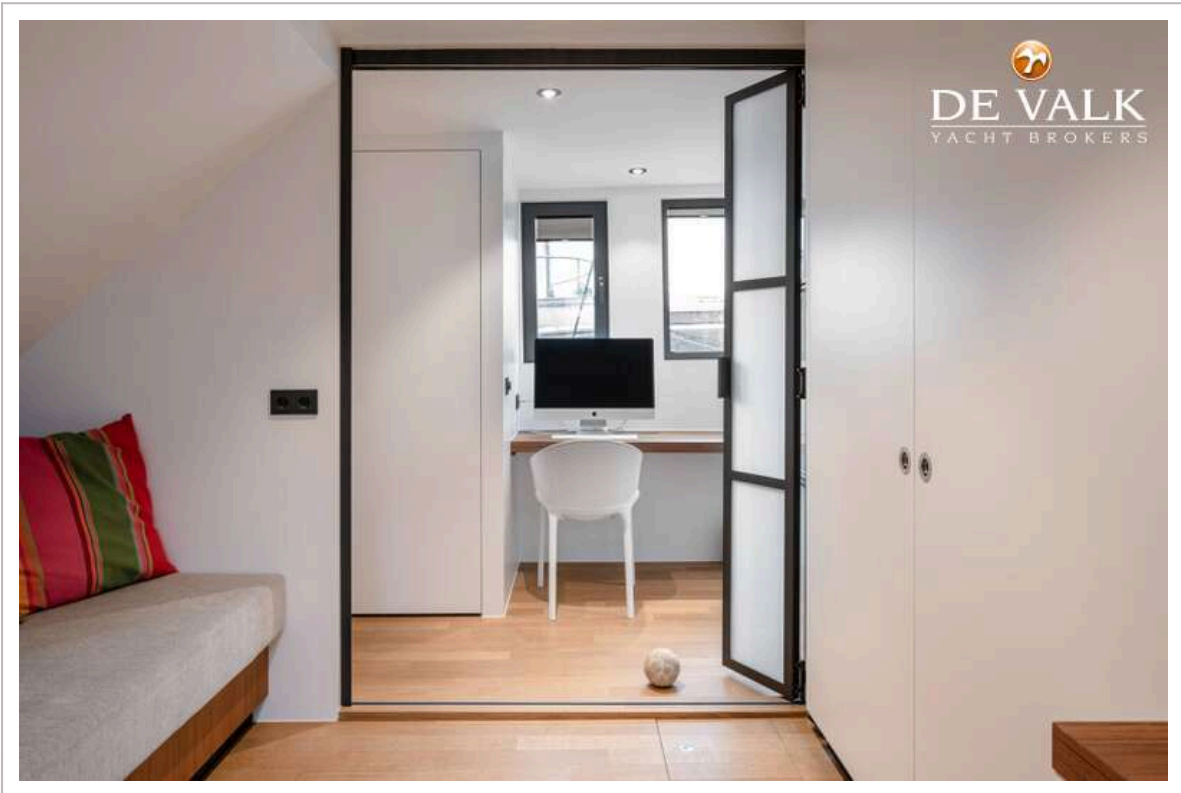
LIVE ABOARD MY WITH BERTH IN AMSTERDAM



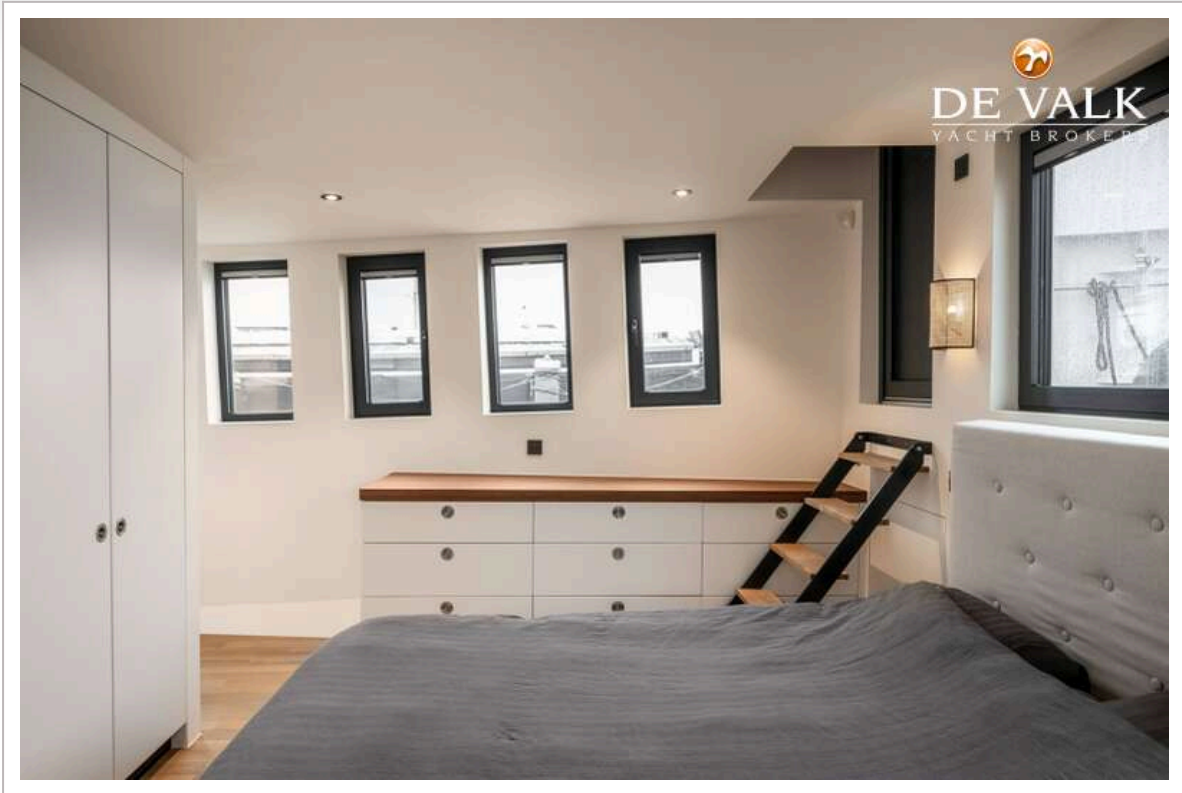
LIVE ABOARD MY WITH BERTH IN AMSTERDAM



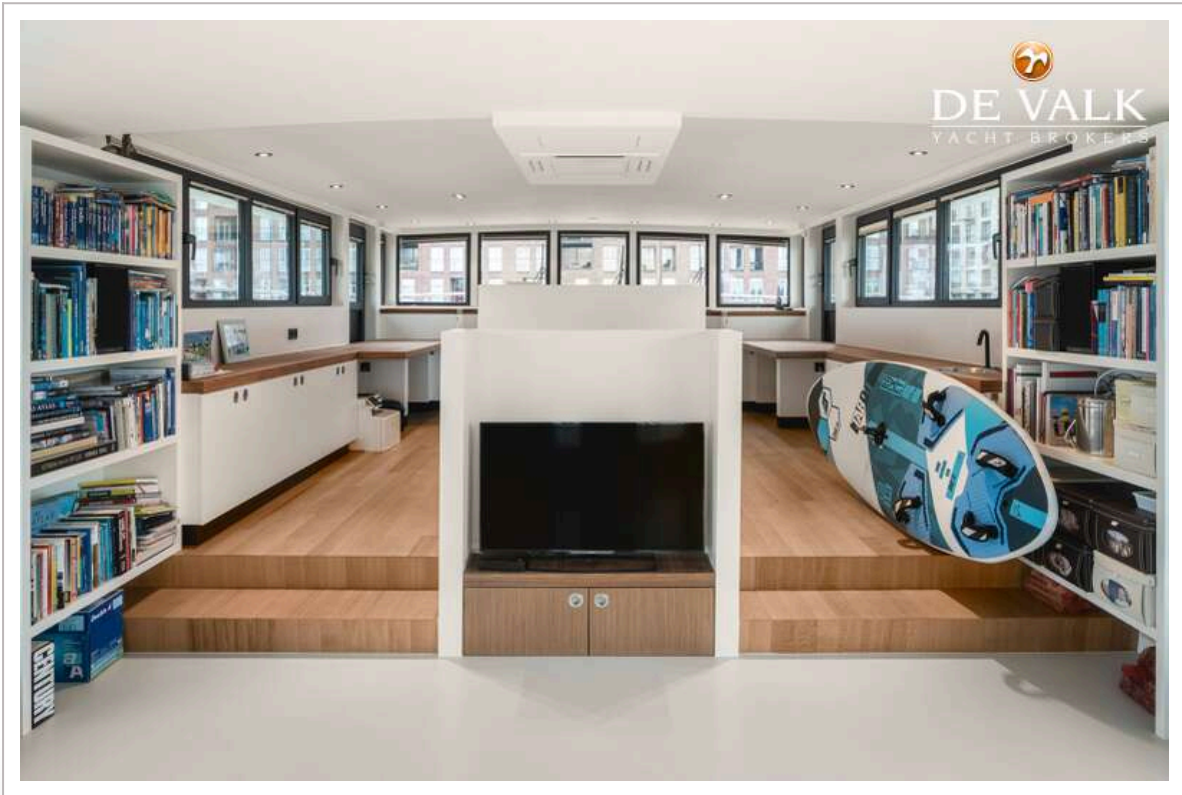
LIVE ABOARD MY WITH BERTH IN AMSTERDAM



LIVE ABOARD MY WITH BERTH IN AMSTERDAM



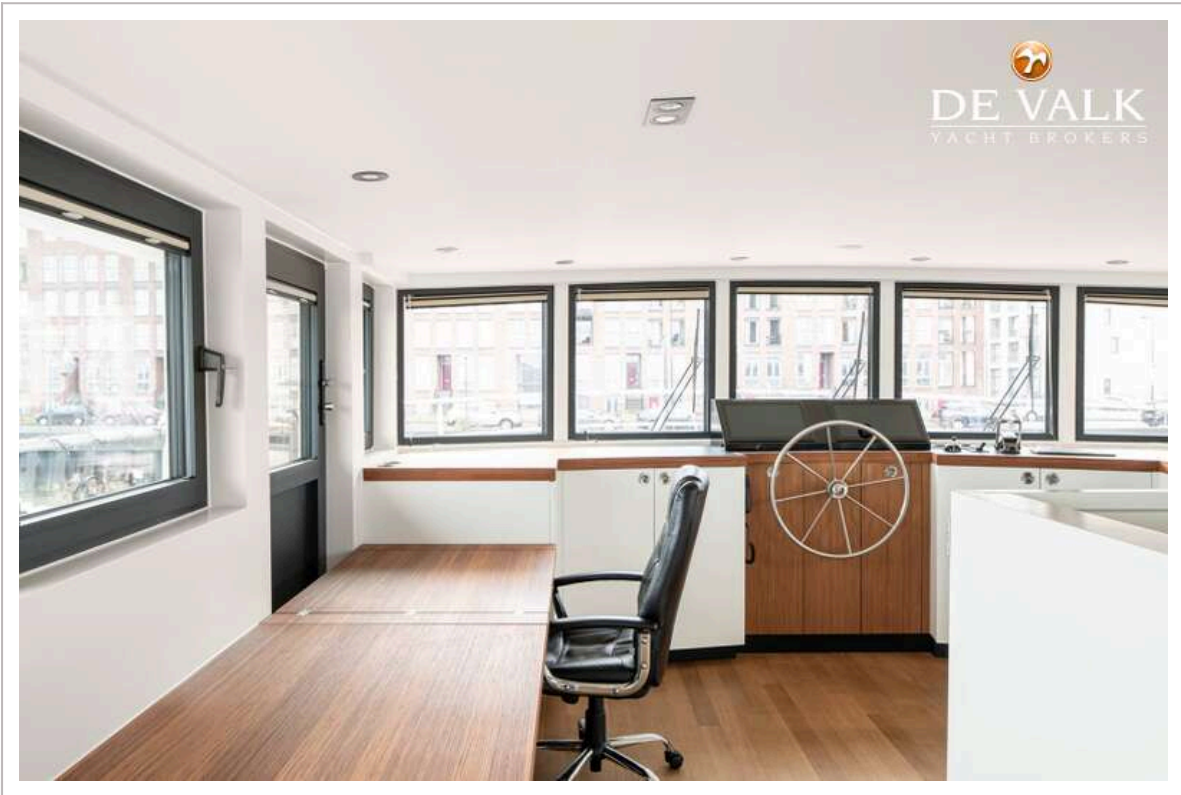
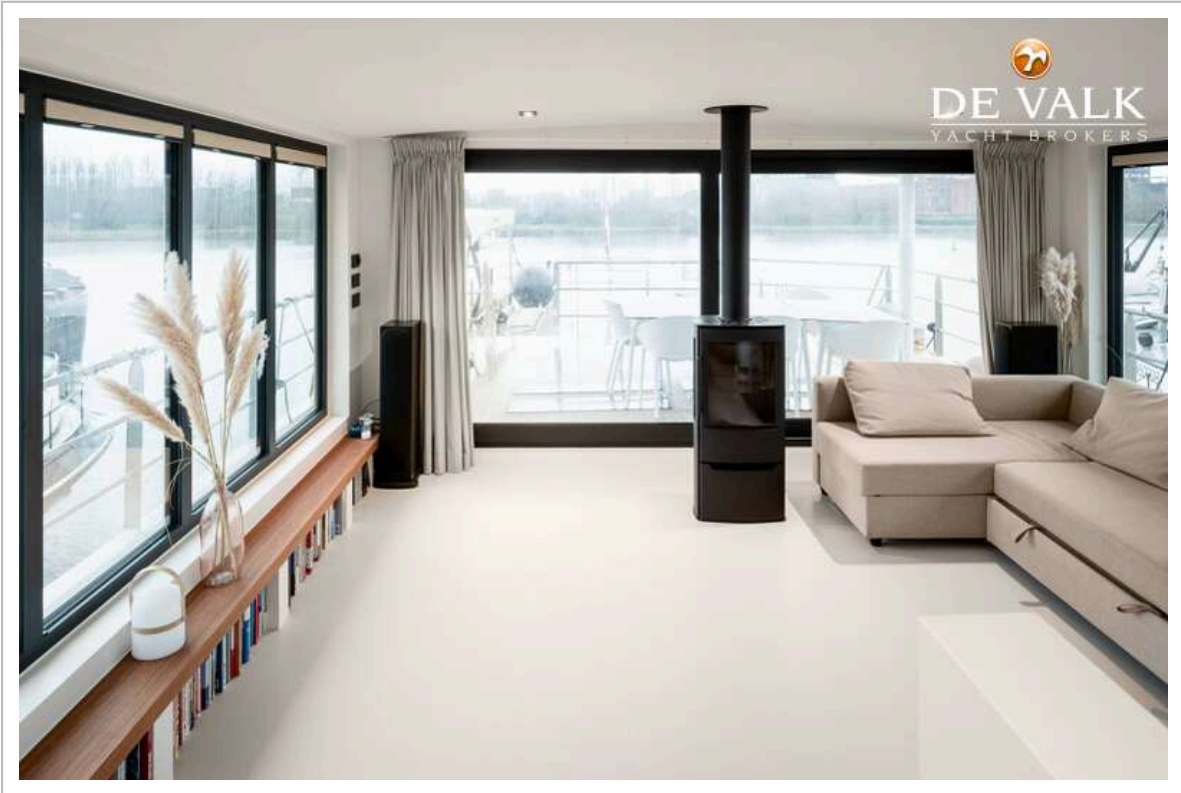
  
DE VALK  
YACHT BROKERS



  
DE VALK  
YACHT BROKERS



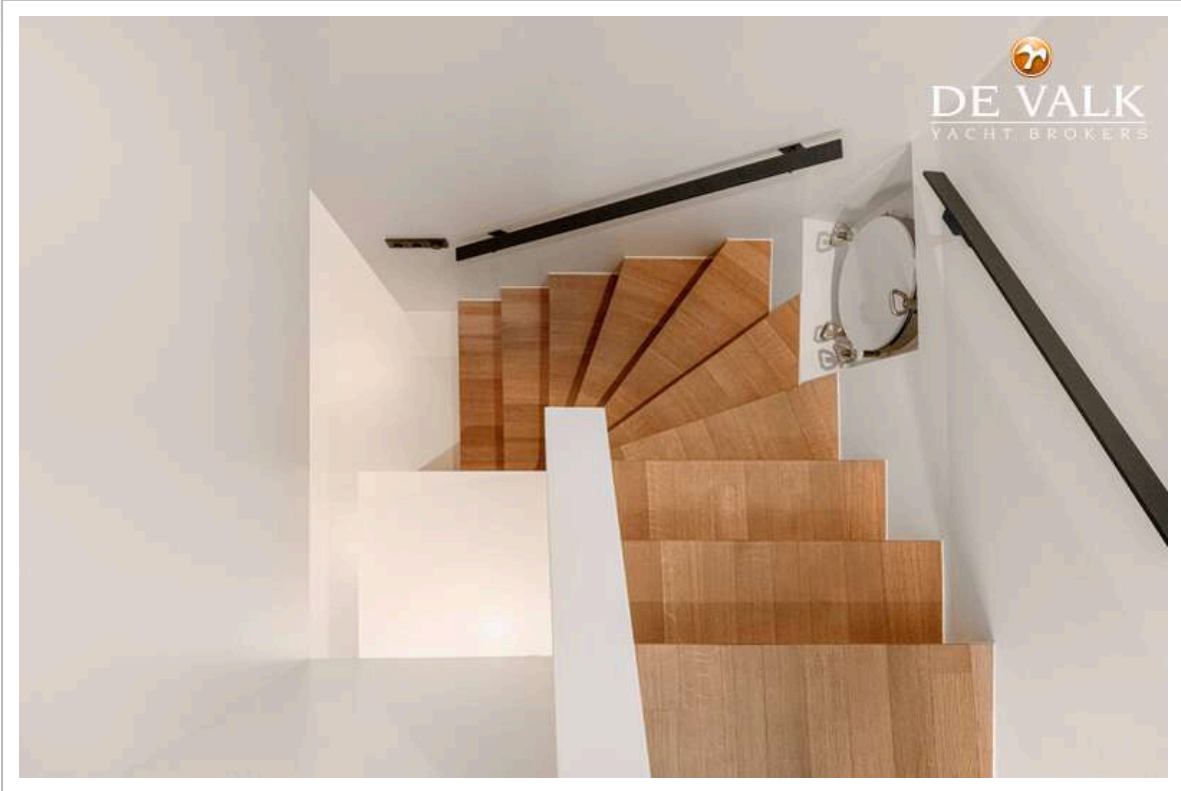
LIVE ABOARD MY WITH BERTH IN AMSTERDAM



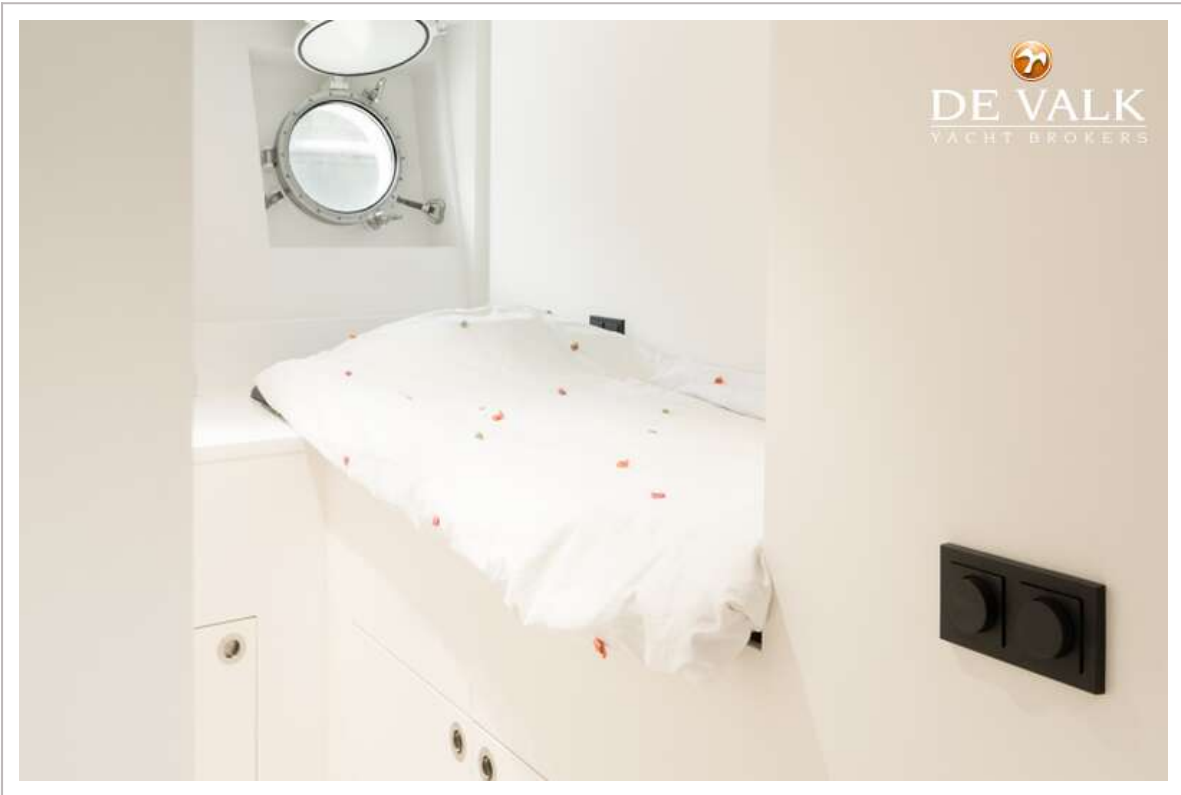
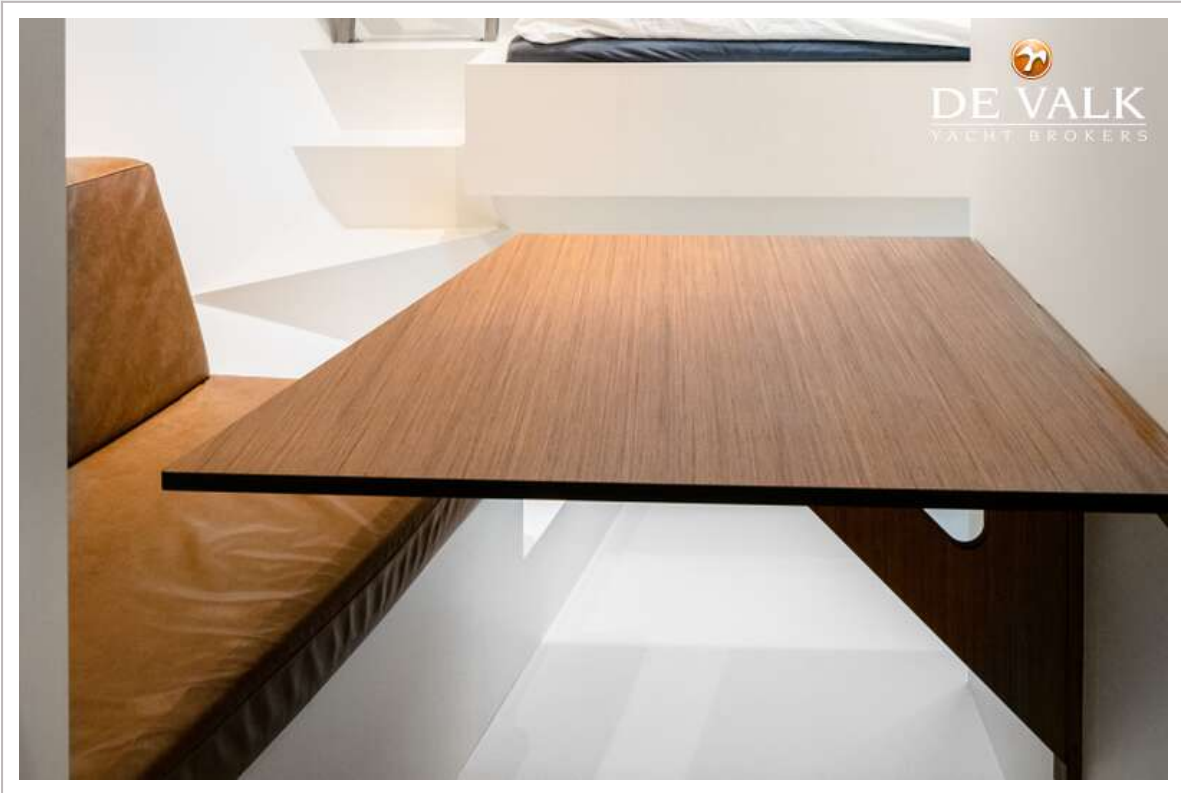
LIVE ABOARD MY WITH BERTH IN AMSTERDAM



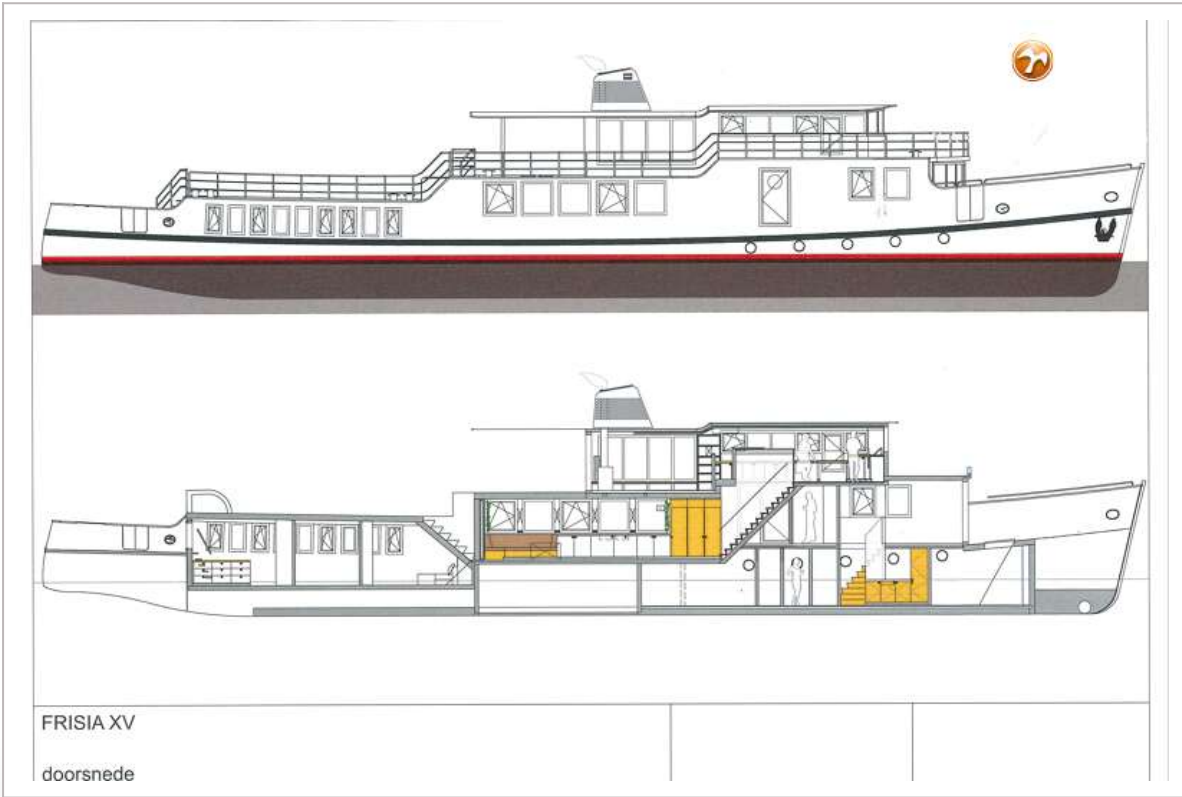
LIVE ABOARD MY WITH BERTH IN AMSTERDAM



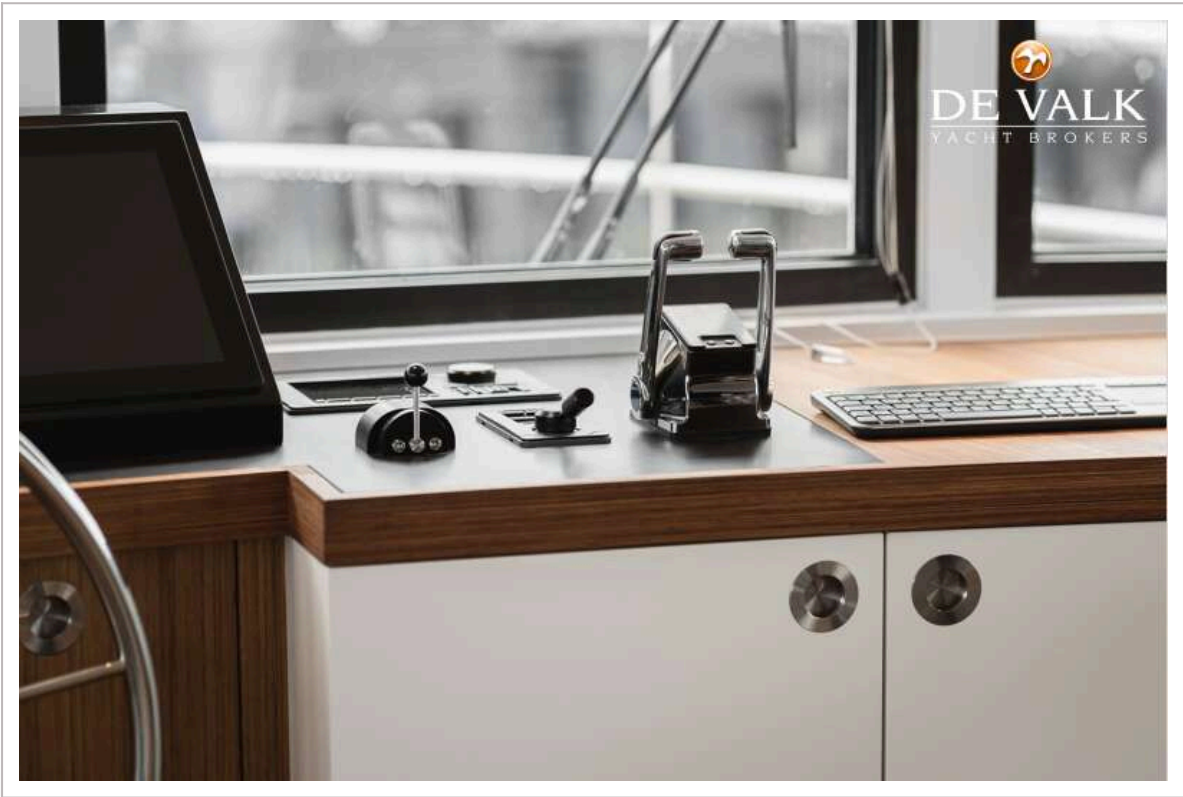
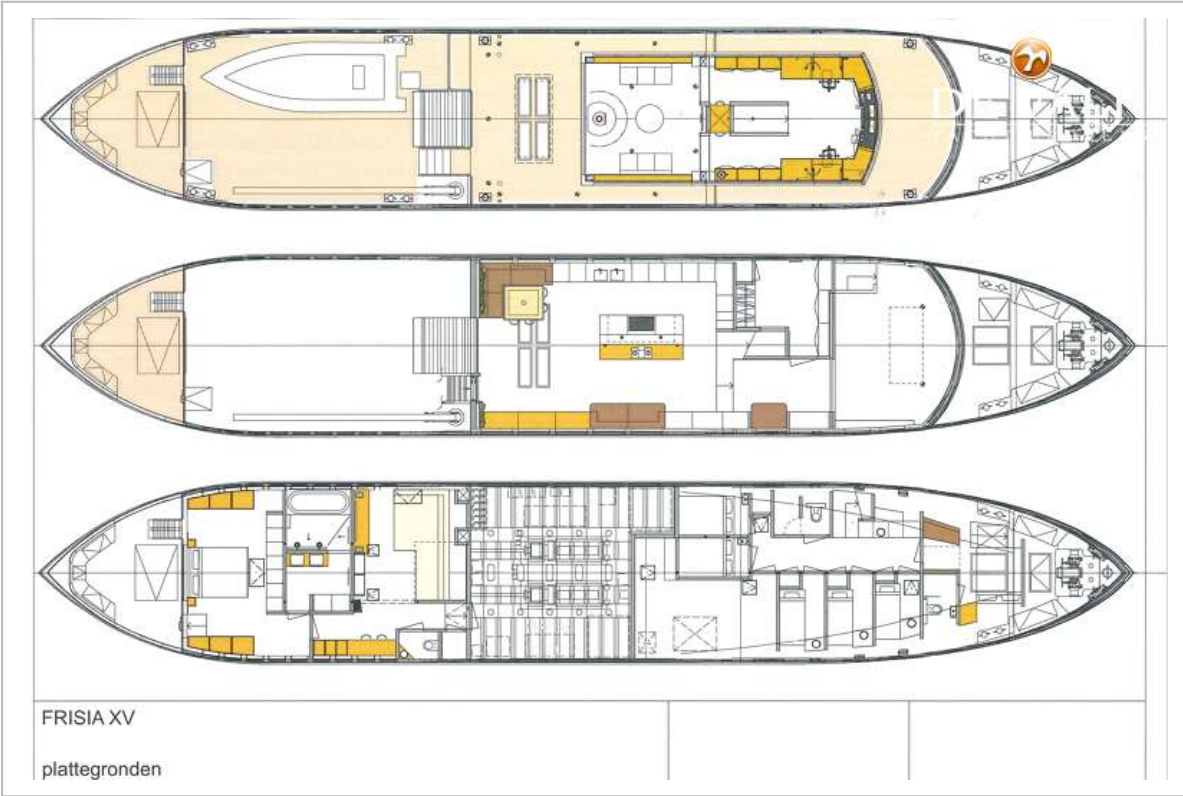
LIVE ABOARD MY WITH BERTH IN AMSTERDAM



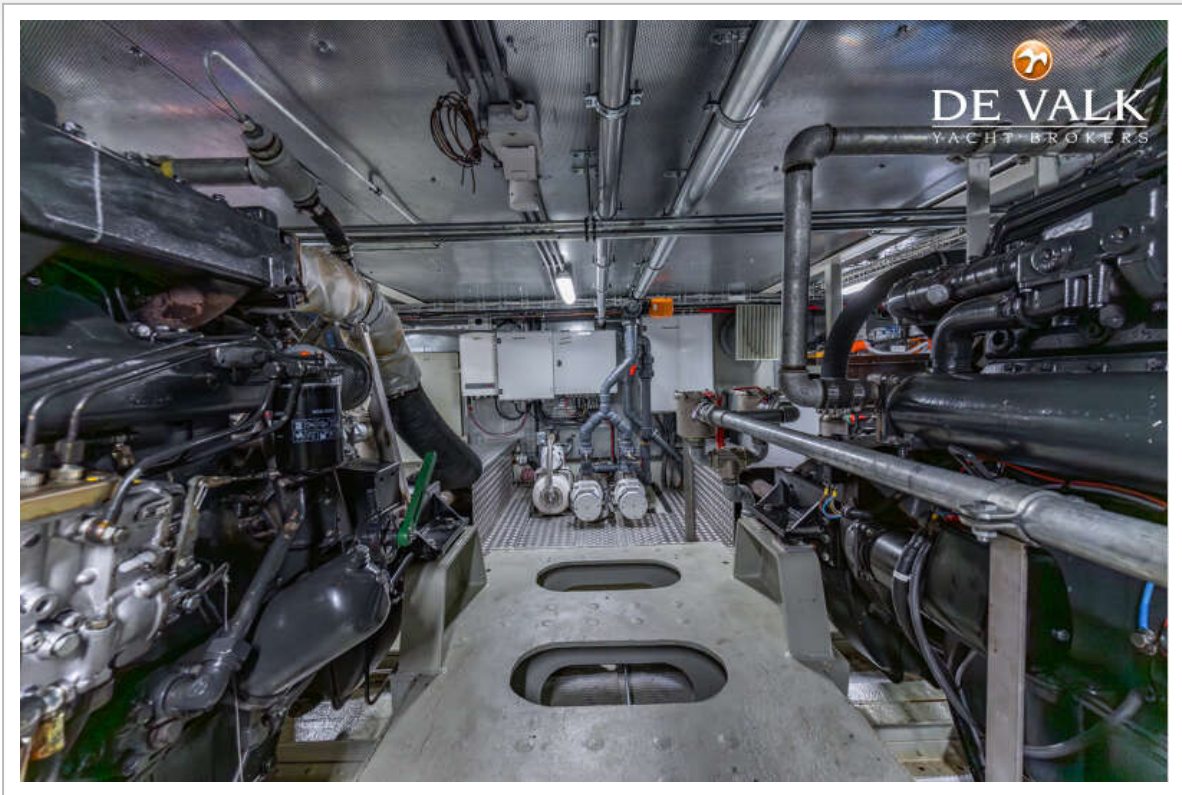
# LIVE ABOARD MY WITH BERTH IN AMSTERDAM



# LIVE ABOARD MY WITH BERTH IN AMSTERDAM



LIVE ABOARD MY WITH BERTH IN AMSTERDAM



LIVE ABOARD MY WITH BERTH IN AMSTERDAM

