



DE VALK
YACHT BROKERS



FOUNTAIN PAJOT BELIZE 43



DE VALK
YACHT BROKERS

FOUNTAIN PAJOT BELIZE 43

BROKER'S COMMENTS

The Belize 43, from the Fountaine Pajot shipyard, is a high-performance catamaran. It proves to be one of the fastest in its class and generation thanks to the 111m² of sail. Everything has been thought of to facilitate navigation as can be seen from the optimised stations. The helm station is well protected; circulation is fluid with large gangways and under deck stowage of halyards; the cockpit is directly connected to the saloon. All these details offer a real cruising comfort. Inside a spacious living area. Well-equipped and maintained. Private use only.

Jörg Hellmich

SPECIFICATIONS

| | | | |
|---------------------|-------------------------|----------------|----------------------------|
| Dimensions | 13.11 x 7.00 x 1.30 (m) | Builder | Fountaine Pajot |
| Built | 2004 | Cabins | 3 |
| Material | GRP | Berths | 8 |
| Engine(s) | 2 x Yanmar 3JH3E diesel | Hp/Kw | 2 x 40.00 (hp), 29.44 (kw) |
| Asking price | € 279.000 (VAT Paid) | Lying | at sales office |

CONTACT

| | | | |
|---------------------|---|------------------|-------------------|
| Sales office | De Valk Almeria | Telephone | +34 950 497 825 |
| Address | Puerto Deportivo, Darsena de la Batea 42 04711 Almerimar ES | E-mail | almeria@devalk.nl |

DISCLAIMER

These particulars are given in good faith as supplied but cannot be guaranteed.



FONTAINE PAJOT BELIZE 43

GENERAL

| | |
|-----------------------------------|--------------------------|
| Model | FONTAINE PAJOT BELIZE 43 |
| Type | catamaran sailing yacht |
| LOA (m) | 13,11 |
| LWL (m) | 12,00 |
| Beam (m) | 7,00 |
| Draft (m) | 1,30 |
| Air draft (m) | 21,00 |
| Headroom (m) | 1,98 |
| Year built | 2004 |
| Builder | Fountaine Pajot |
| Country | France |
| Designer | Joubert - Nivelt |
| Displacement (t) | 10 |
| Gross tonnage | 8,6 |
| CE norm | A |
| Hull material | GRP |
| Hull colour | white |
| Hull shape | Multihull |
| Keel type | fin keel |
| Superstructure material | GRP |
| Deck material | GRP |
| Deck finish | non-skid moulded in |
| Superstructure deck finish | non-skid moulded in |
| Cockpit deck finish | non-skid moulded in |
| Antifouling (year) | 2024 |
| Window frame | aluminium |
| Window material | perspex |
| Deckhatch | Lewmar |
| Portholes | aluminium |
| Fuel tank (litre) | stainless steel 300 |



| | |
|------------------------------|-------------------------|
| Level indicator (fuel tank) | yes |
| Freshwater tank (litre) | polyethylene 600 |
| Level indicator (freshwater) | yes |
| Blackwater tank (litre) | polyethylene |
| Blackwater tank extraction | deck extraction + pump |
| Wheel steering | cable steering |
| Emergency tiller | yes |
| More info on hull | No damages or scratches |

ACCOMMODATION

| | |
|-------------------------|--|
| Cabins | 3 |
| Berths | 8 |
| Interior | New saloon upholstery (2022) |
| Layout | Converted to 3 cabin version (originally 4 cabins) |
| Floor | wood |
| Open cockpit | yes |
| Deck saloon | yes |
| Headroom saloon (m) | 1,98 |
| Heating | diesel ducted hot air Eberspächer (2022) with warm air circulation in all cabins |
| Chart table | yes |
| Sliding door to cockpit | yes |
| Galley | U-shape |
| Countertop | corian |
| Sink | stainless steel Double |
| Cooker | calor gas Ono 3 burner |
| Oven | Ono |
| Fridge | And add. 220V fridge (2021) |
| Freezer | yes |
| Hot water system | 220V + engine Boiler 60 L. (2021) |
| Water pressure system | electrical Jabsco |



FONTAINE PAJOT BELIZE 43

| | |
|-----------------|--|
| Hot water tap | yes |
| Crockery | yes |
| Owners cabin | double bed Aft Port |
| Bed length (m) | 2,00 |
| Wardrobe | hanging and shelves |
| Toilet | en suite |
| Toilet system | manual Jabsco |
| Wash basin | at the toilet |
| Shower | en suite |
| Guest cabin 1 | double bed Aft STB |
| Bed length (m) | 2,00 |
| Wardrobe | hanging and shelves |
| Toilet | shared |
| Toilet system | manual Jabsco |
| Wash basin | at the toilet |
| Shower | shared |
| Guest cabin 2 | double bed Forward STB |
| Bed length (m) | 2,00 |
| Wardrobe | hanging and drawers |
| Guest cabin 3 | Forward Port is converted into a storage cabin |
| Crew cabin(s) | 2 x Forward with single bed |
| Washing machine | Candy Rapido 7kg (220V) |
| Extra info | Internal lights in LED (2022) |
| Extra info | New slatted frames & mattresses (2023) in aft cabins |

MACHINERY

| | |
|---------------|--------|
| No of engines | 2 |
| Make | Yanmar |
| Type | 3JH3E |
| HP | 40 |
| kW | 29.44 |



FOUNTAIN PAJOT BELIZE 43

| | |
|---------------------------------|---|
| Fuel | diesel |
| Year installed | 2004 |
| Year of overhaul | 2021 (injectors, pumps, saildrives, silent blocks) |
| Maximum speed (kn) | 7,8 |
| Cruising speed (kn) | 6 |
| Consumption (l/hr) | 6 |
| Range (nm) | 300 |
| Engine hours | 5300 |
| Engine cooling system | freshwater heat exchanger |
| Drive | sail-drive |
| Saildrive seal | New 2021 |
| Engine controls | bowden cable |
| Gearbox | hydraulic |
| Exhaust | watercooled |
| Propeller type | folding Maxprop (2021) |
| Propeller blades | 3 |
| Propeller shaft material | stainless steel |
| Shaft lubrication | water |
| Manual bilge pump | yes |
| Electric bilge pump | 4 units |
| Electrical installation | 12V system |
| Start battery | 2 x 12V / 90 Ah Acid (2021) |
| Service battery | 2 x 12V / 300 Ah Lithium (2021) |
| Battery monitor | yes |
| Battery charger | Sterling Power Pro Alt C 130 Amp |
| Battery charger/inverter | Victron Energy Multiplus 12V / 3000 VA / 120 Amp (2021) |
| Solar panel | 300W on Bimini (2021) & 400W on Davits (2015) |
| Diode battery combiners | yes |
| Shorepower | with cable 220V |
| Watermaker | Acquabase SLCE (60 l/hr) |
| Extra info | 2 x new 85 Amp alternator in 2024 |



NAVIGATION

| | |
|------------------------|-------------------------------|
| Compass | Plastimo |
| Multi control display | Raymarine |
| Depth sounder/log | Raymarine i70 |
| Windset | Raymarine Wind ST2 90 |
| Repeater | Raymarine Multi |
| VHF | Raymarine RO 4800 |
| Autopilot | Raymarine STR6000 SP |
| Rudder angle indicator | Raymarine |
| Radar/GPS/plotter | Raymarine Hybrid Touch (2015) |
| Electronic chart(s) | Navionics |
| AIS transceiver | Raymarine |
| EPIRB | Oceansignal (2025) |
| Navigation lights | LED (2023) |
| Extra info | Repeater at nav station |

EQUIPMENT

| | |
|---------------------|--|
| Fixed windscreen | At helm |
| Bimini | On aluminum frame |
| Cockpit cushions | New 2022 |
| Cockpit table | yes |
| Bathing platform | yes |
| Boarding ladder | stainless steel |
| Deck shower | H&c (new 2021) |
| Anchor | Spade 30kg (2021) |
| Anchor chain | 60m (10mm) |
| Anchor 2 | Lewmar 20kg |
| Anchor chain | 15m (8mm) + 40m lead filled rope (18mm) |
| Other ground tackle | Stern anchor: Britany 15kp + chain & rope |
| Windlass | electrical Lofrans (1000W) |
| Dinghy | rigid inflatable Highfield extralight 310 (2022) |



| | |
|-----------------------------|----------------------------|
| Outboard | Tohatsu 2,6 kW (2023) |
| Outboard support | yes |
| Davits | stainless steel |
| Davits controls | manual |
| Sea railing | wire New 2021 |
| Grab rail (superstructure) | stainless steel New 2022 |
| Pushpit | yes |
| Pulpit | yes |
| Life raft | container Seasafe |
| Life raft (pers) | 8 |
| Last life raft survey | In 2024 |
| Lifejackets | yes |
| Safety harness | yes |
| Lifebuoy | Ring |
| Danbuoy | IOR |
| Safety lines on deck | yes |
| Clearview window | yes |
| Binocular | yes |
| Radar reflector | Mer Veille |
| Fenders | yes |
| Mooring lines | yes |
| Spare parts | yes |
| Tools | yes |
| Radio-cd player | Blaupunkt Amsterdam |
| Speakers in salon | yes |
| Clock - barometer | yes |
| Fire extinguisher | 6 units |
| Extinguisher in engine room | yes |
| Extra info | New trampoline net in 2023 |

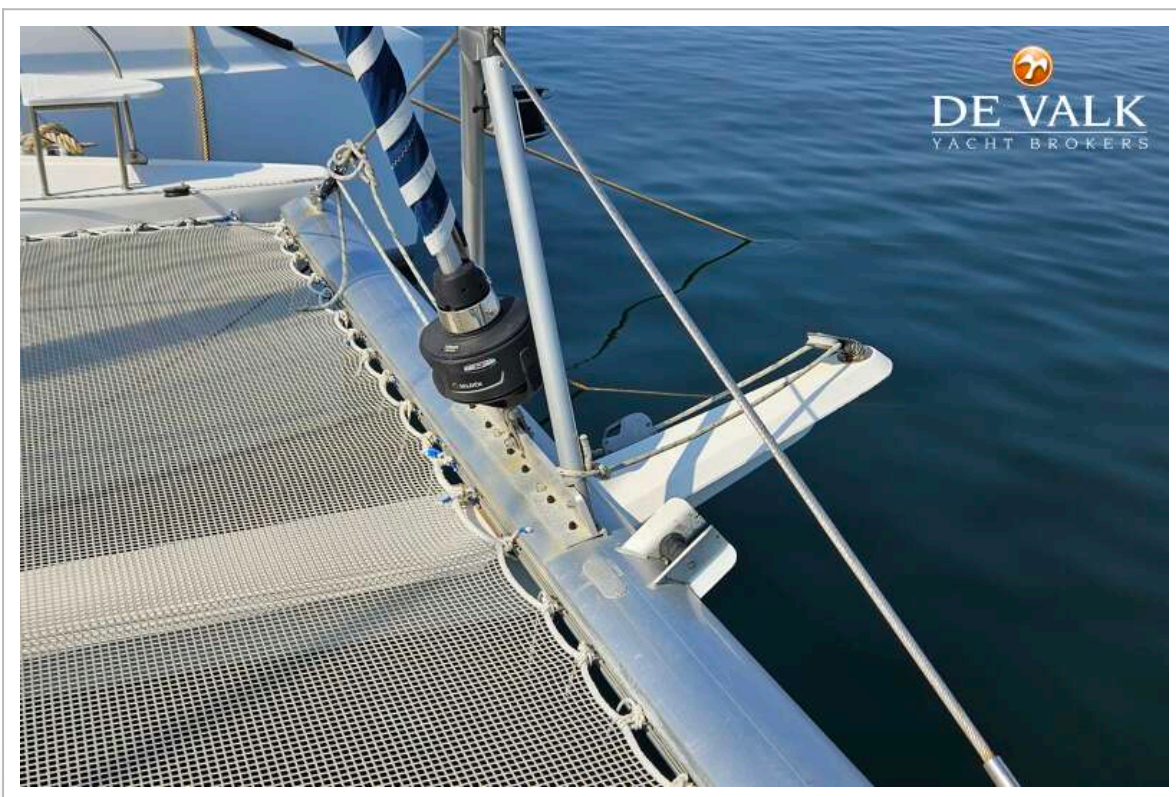
RIGGING



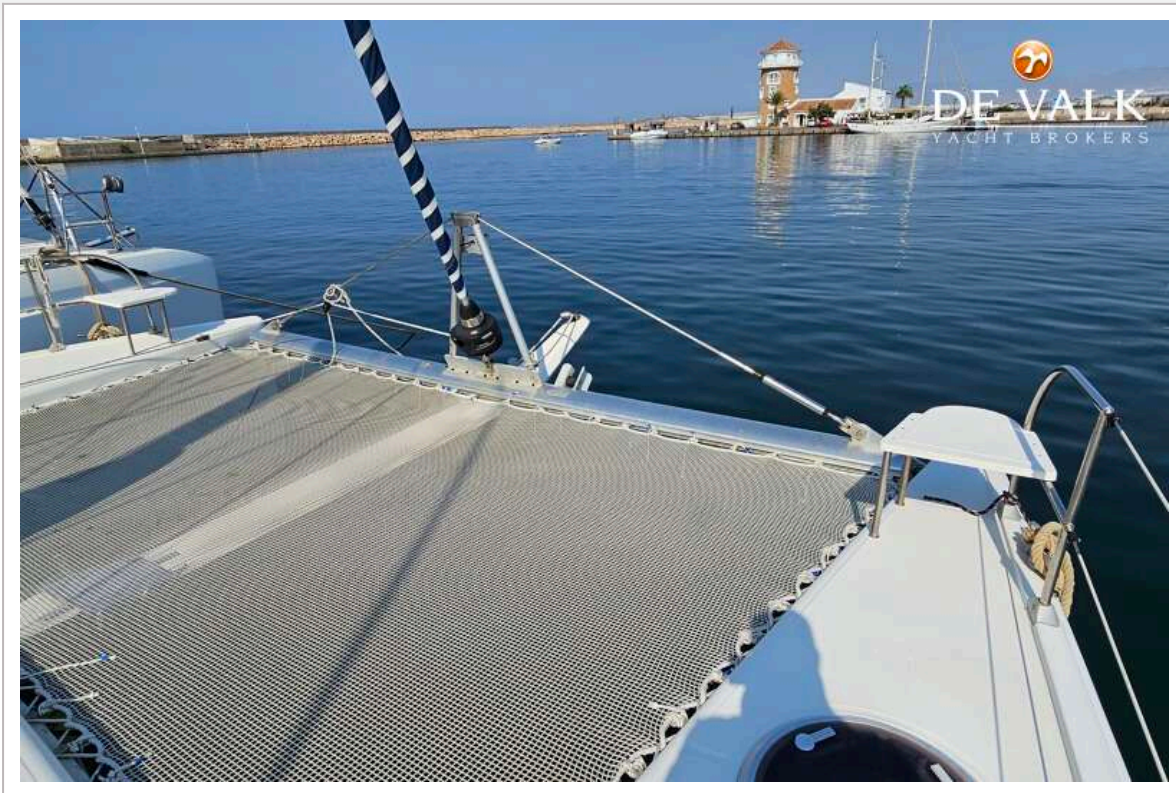
| | |
|--------------------------------|--|
| Rigging | cat-rig |
| Standing rigging | wire New in 2015 and 2023 (for- & backstay) |
| Brand mast | Z-Spar |
| Material mast | aluminium |
| Spreaders | 2 sets |
| Battcars | yes |
| Fully battened mainsail | Dracon 67m ² (2015), overhauled in 2024 |
| Genoa | Dracon 44m ² (2015), overhauled in 2023 |
| Genoa furler | Furlex (new 2023) |
| Gennaker | 115m ² with furler & sheets (2015) |
| Reefing System | slabreefing 2 reefs (new Dyneema 2022) |
| Boomvang | mechanical and tackle Y-Spars |
| Primary sheet winch | 2 x Lewmar 54 ST 2SP |
| Secondary sheet winch | 2 x Lewmar 48 ST 2SP |
| Halyard winches | 1 x Lewmar 40 ST 2SP |
| Reefing winch | 2 x Lewmar 44 ST 2 SP |
| Multifunctional winches | E-winch + 2. battery and charger |
| Extra info | Dyneema running rigging new in 2022 |

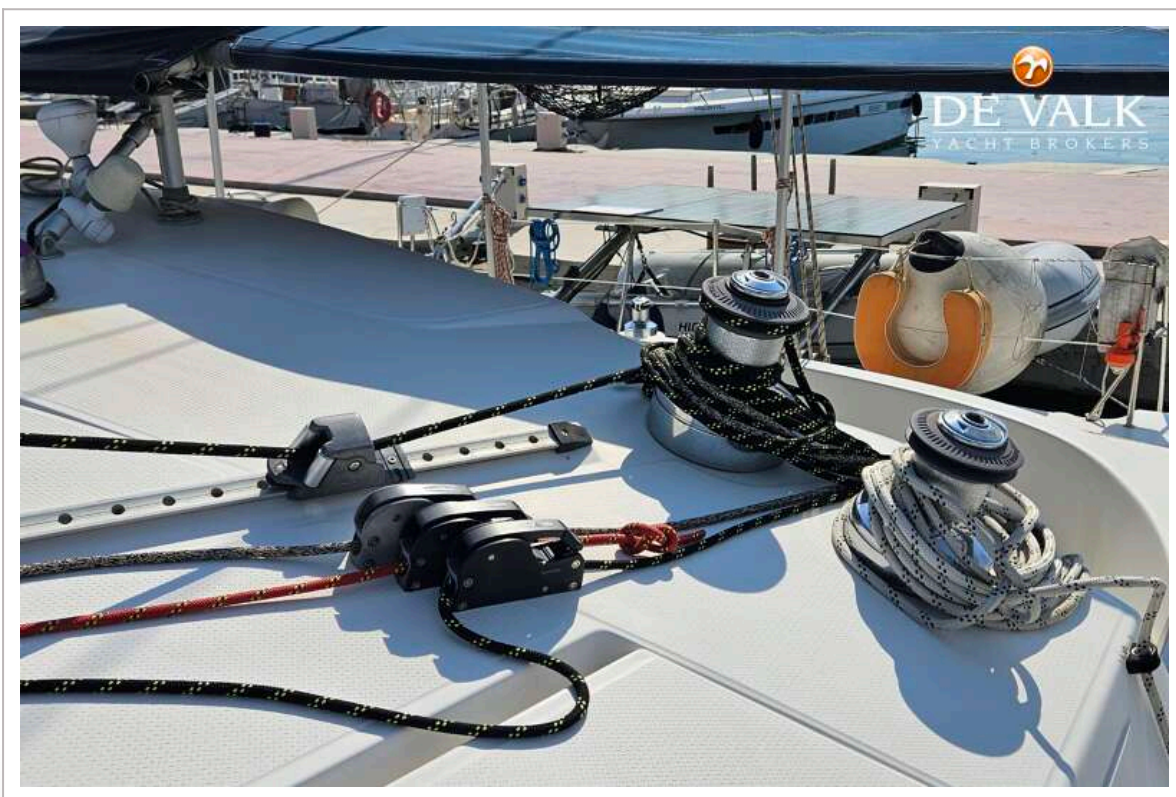


FOUNTAINE PAJOT BELIZE 43

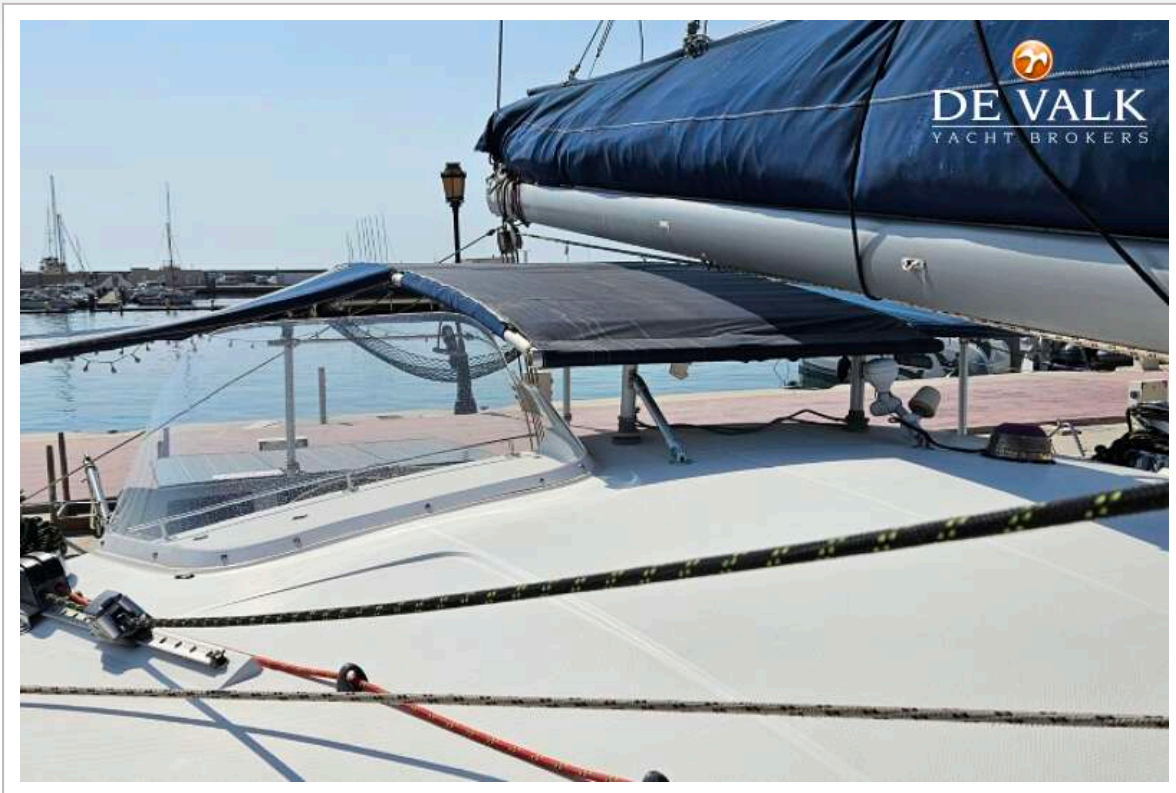


FONTAINE PAJOT BELIZE 43





FONTAINE PAJOT BELIZE 43



FONTAINE PAJOT BELIZE 43



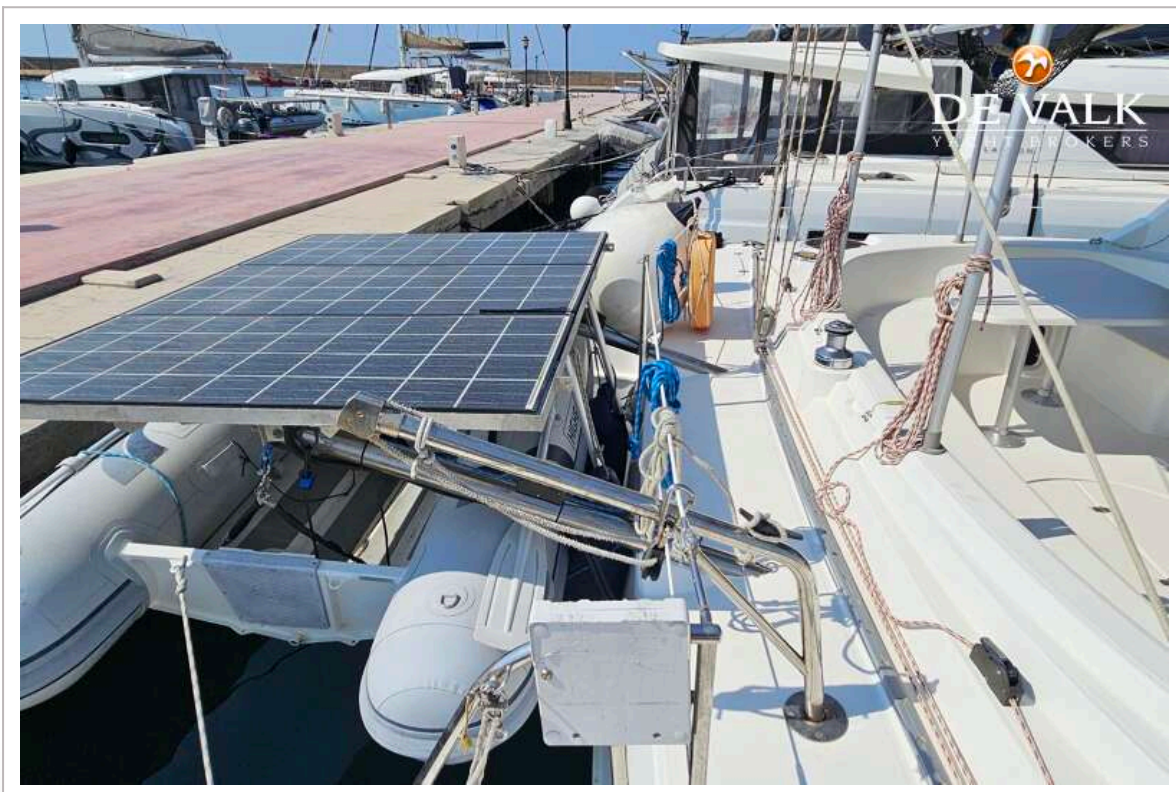
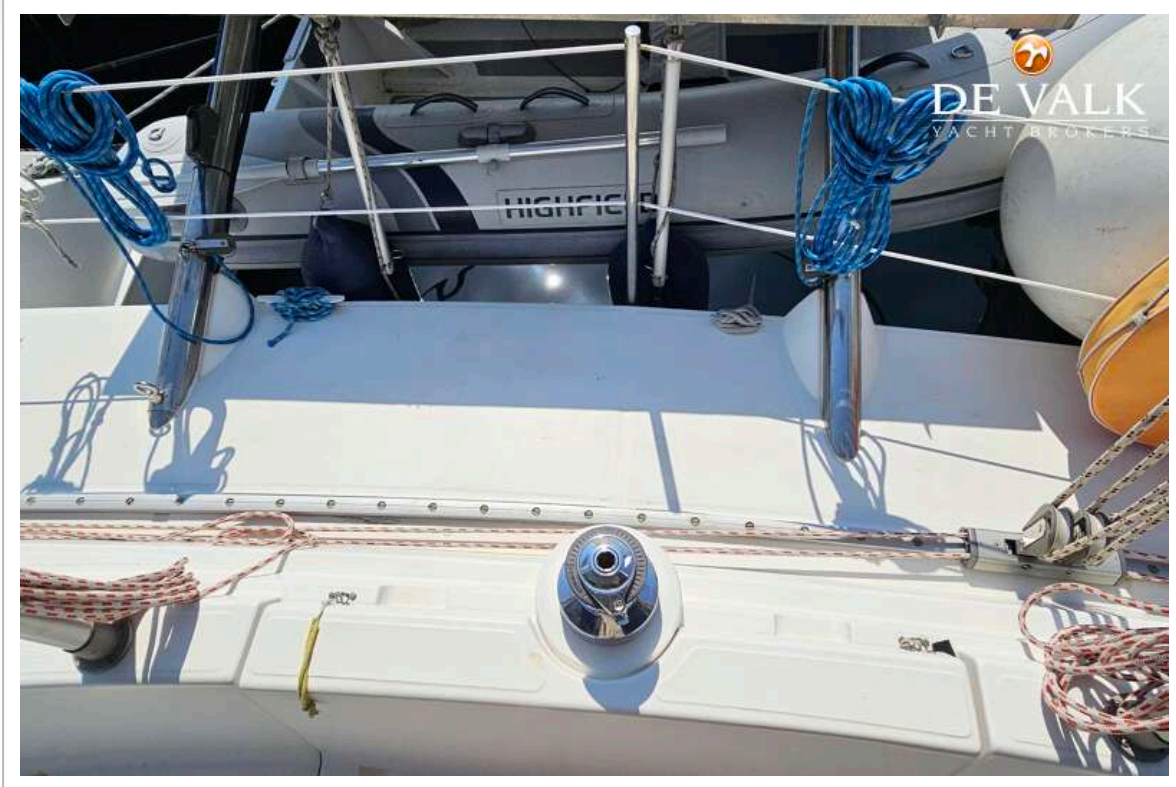
FONTAINE PAJOT BELIZE 43



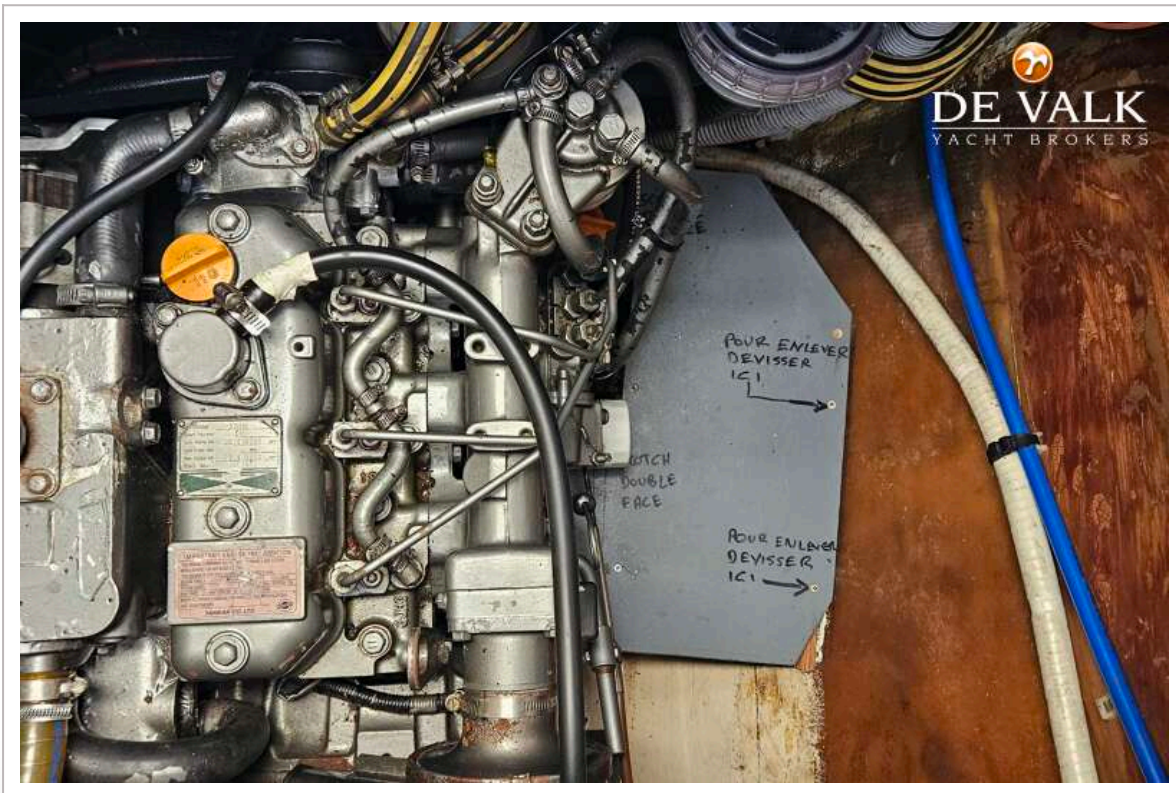
FONTAINE PAJOT BELIZE 43



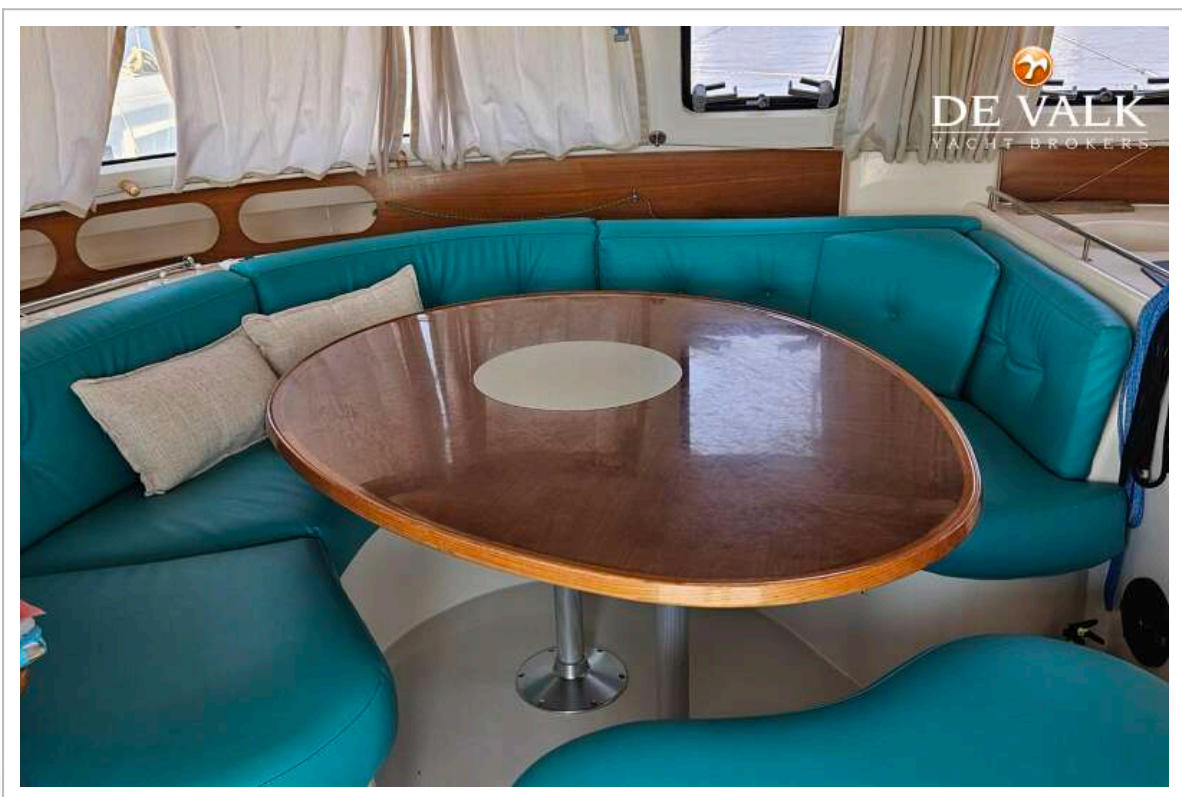
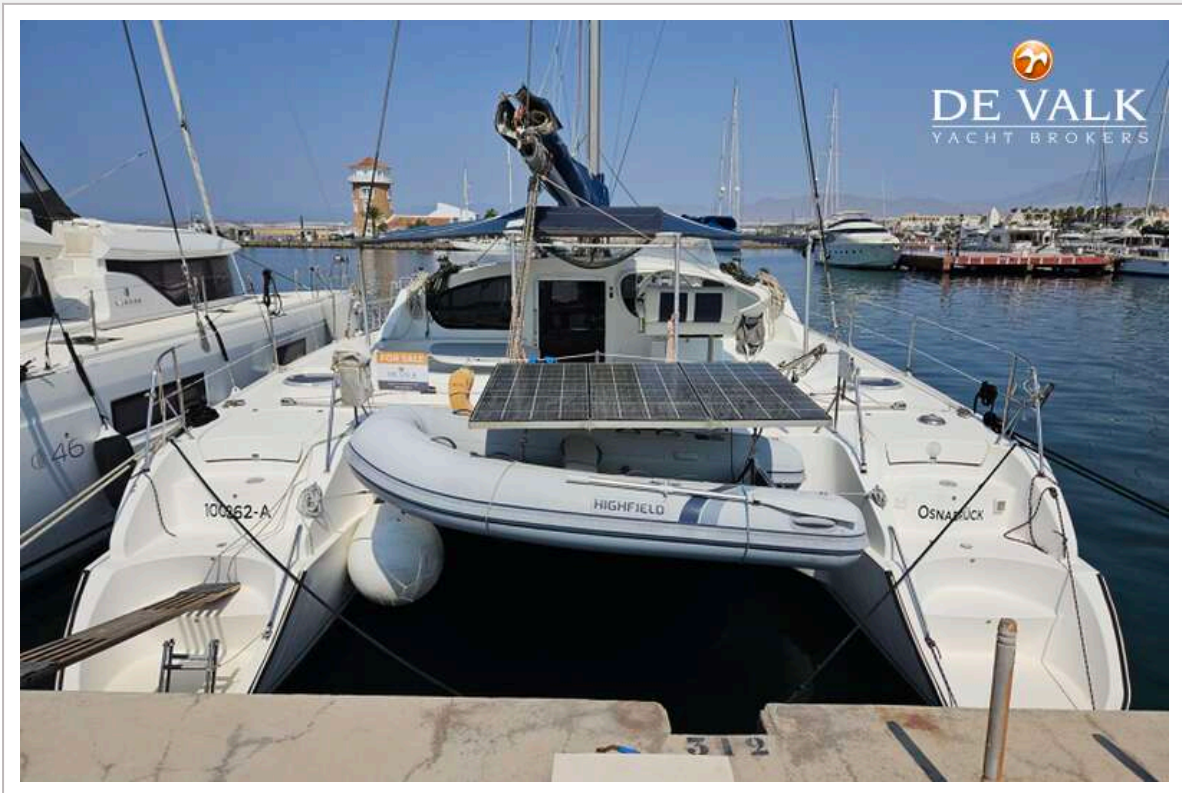
FONTAINE PAJOT BELIZE 43



FONTAINE PAJOT BELIZE 43



FONTAINE PAJOT BELIZE 43



FONTAINE PAJOT BELIZE 43

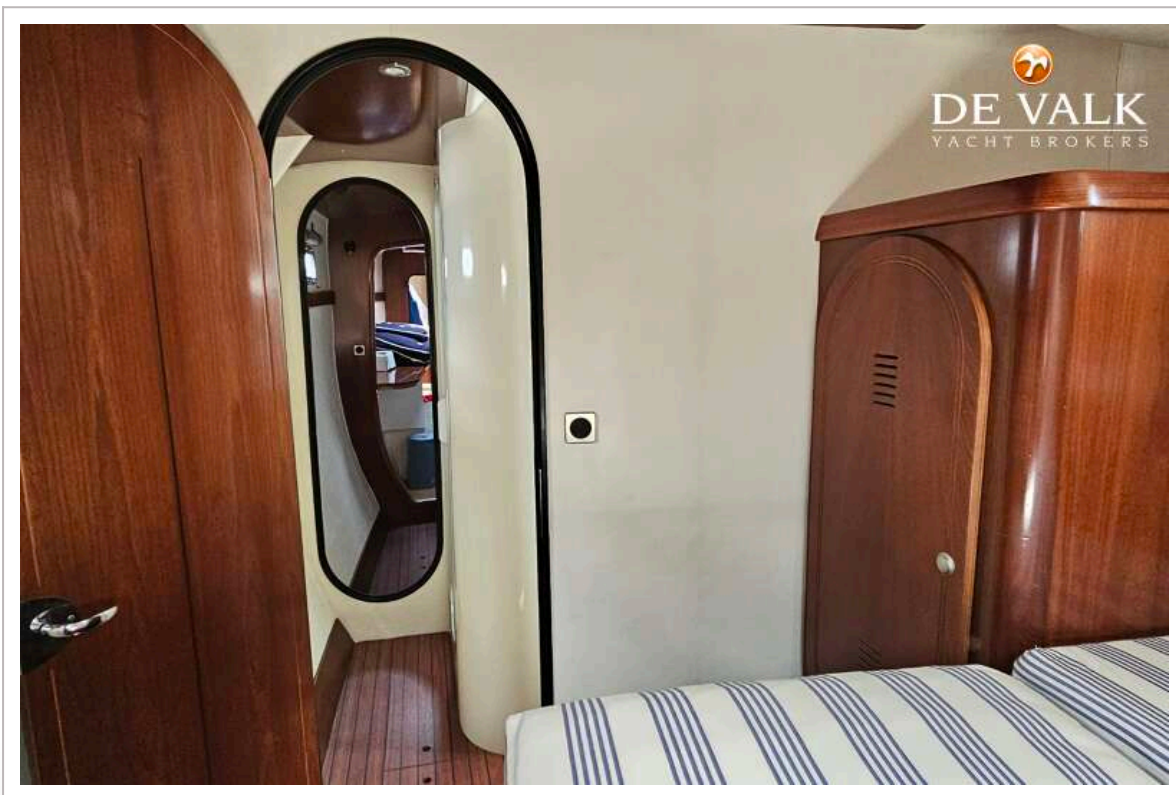


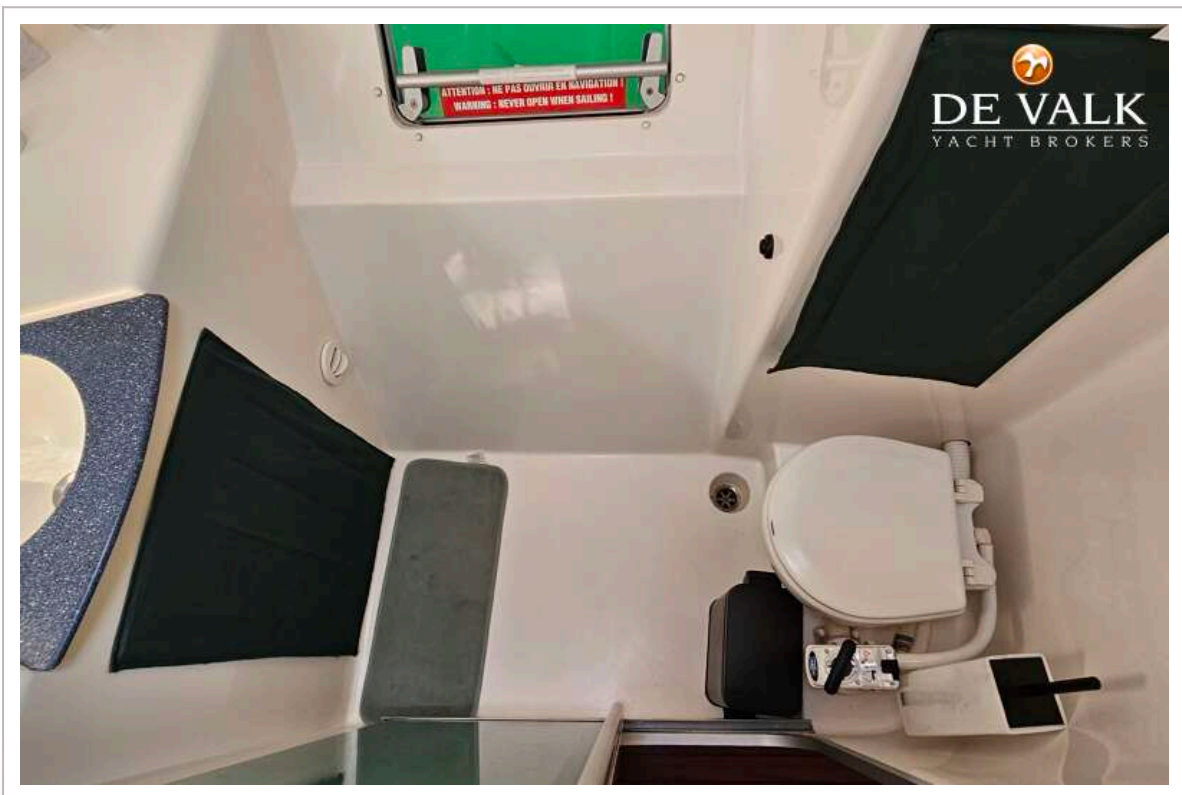
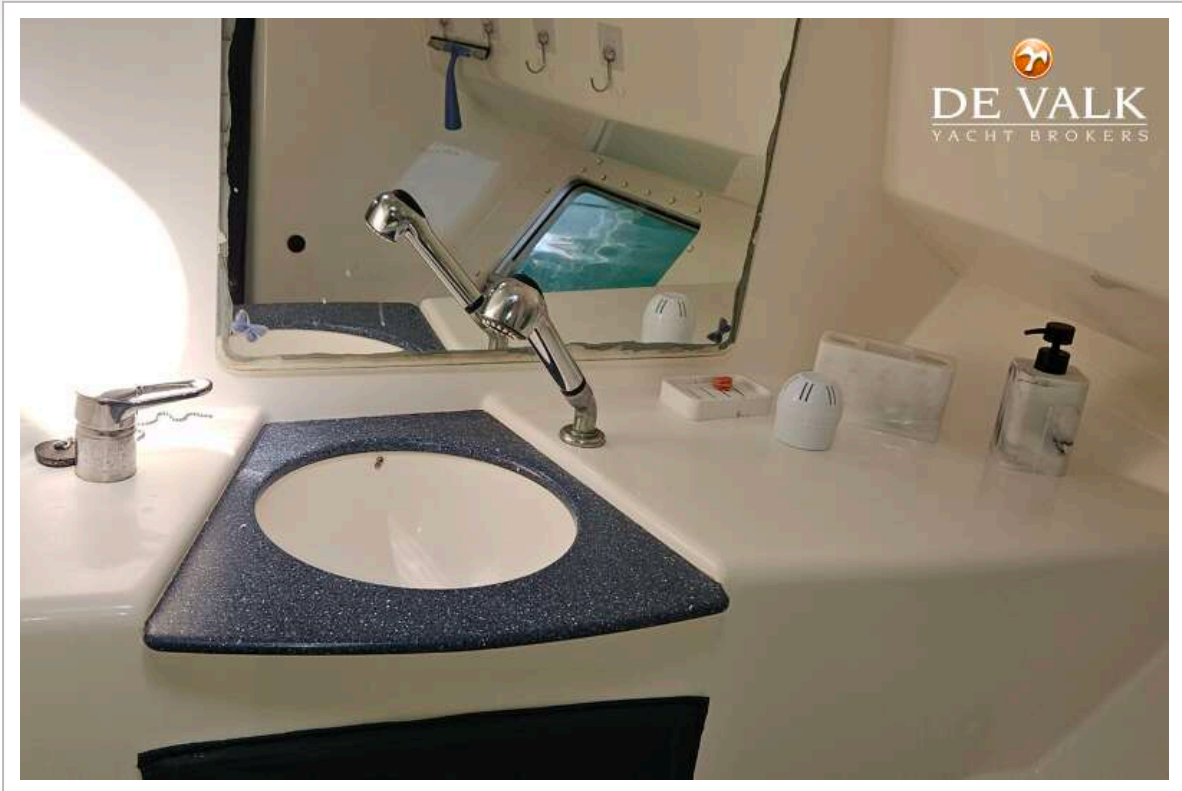
FONTAINE PAJOT BELIZE 43



FONTAINE PAJOT BELIZE 43







FONTAINE PAJOT BELIZE 43

