



BENETEAU ANTARES 9.80

BENETEAU ANTARES 9.80

BROKER'S COMMENTS

Never seen a better maintained and more spotless kept Beneteau Antares 9.80. She comes with an honest 1300 hours on the D4 engines, maintained by Volvo only. All safety equipment full in service, but please focus on the 60 cm extended swimming platform, the new flexi teak, the spotless engine room. Also, a new fridge, new oven, new instruments, new fish finder, new pilot, new cushions and carpentry, new luxury mattress, and the list goes on and on. What is not, or doesn't look like new? Simply an amazing vessel, she must be seen to believe it! No need to say, she is highly recommended.

Willem Koopmans

SPECIFICATIONS

Dimensions	9.80 x 3.36 x 0.90 (m)	Builder	Chantiers Beneteau S.A.
Built	2005	Cabins	2
Material	GRP	Berths	6
Engine(s)	2 x Volvo Penta D4-225 diesel	Hp/Kw	2 x 225.00 (hp), 165.60 (kw)
Asking price	€ 95.000 (VAT Paid)	Lying	contact sales office

CONTACT

Sales office	De Valk Costa Blanca	Telephone	+34 96 50 21 569
Address	Costa Blanca Region 03730 Javea Alicante ES	E-mail	costablanca@devalk.nl

DISCLAIMER

These particulars are given in good faith as supplied but cannot be guaranteed.



GENERAL

Model	BENETEAU ANTARES 9.80
Type	motor yacht
LOA (m)	9,80
Beam (m)	3,36
Draft (m)	0,90
Headroom (m)	1,90
Year built	2005
Launched	2005
Builder	Chantiers Beneteau S.A.
Country	France
Displacement (t)	5,4
CE norm	B
Hull material	GRP
Hull colour	blue
Hull shape	V-shaped hull
Superstructure material	GRP
Rubbing strake	yes
Deck material	GRP
Deck finish	non-skid moulded in
Superstructure deck finish	non-skid moulded in
Cockpit deck finish	synthetic teak
Antifouling (year)	2024
Window frame	aluminium
Window material	tempered glass
Flybridge	New cushions and carpentry
Flybridge cover	Over instruments
Flybridge cockpit cover	Over cockpit
Fuel tank (litre)	polyethylene 325
Fuel tank 2 (litre)	polyethylene 325
Level indicator (fuel tank)	yes



Freshwater tank (litre)	polyethylene 220
Level indicator (freshwater)	yes
Blackwater tank (litre)	polyethylene 2 way system
Wheel steering	hydraulic
Inside helm position	2 seats
Flybridge helm position	yes
Extra info	All superb maintained

ACCOMMODATION

Cabins	2
Berths	6
Interior	teak
Floor	teak and holly New carpet
Open cockpit	Fully covered by sun screens
Aft deck	yes
Deck saloon	With sun shades outside
Headroom saloon (m)	1.90
Dinette to convert into berth	Cushions available
Sliding door to aft deck	yes
Galley	yes
Countertop	New
Sink	stainless steel New
Oven	New, Corbero
Microwave	Taurus
Fridge	New 80 ltr
Freezer	In fridge, decent size
Hot water system	220V + engine 200 ltr boiler
Water pressure system	electrical
Owners cabin	double bed In front with luxury mattress
Wardrobe	hanging/drawers/shelves
Bathroom	shared



Toilet	shared
Toilet system	manual
Wash basin	in the bathroom
Shower	shared
Guest cabin 1	bunk bed
Wardrobe	drawers and shelves
Bathroom	shared
Toilet	shared
Toilet system	manual
Wash basin	in the bathroom
Shower	shared
Extra info	All LED lights

MACHINERY

No of engines	2
Make	Volvo Penta
Type	D4-225
HP	225
kW	165.60
Fuel	diesel
Year installed	2005
Year of overhaul	In full maintenance by Volvo
Maximum speed (kn)	21
Cruising speed (kn)	17
Engine hours	1350
Engine cooling system	freshwater heat exchanger
Drive	shaft
Engine controls	bowden cable
Bowthruster	electric Lewmar
Propeller type	fixed
Propeller blades	4



Propeller shaft material	stainless steel
Shaft lubrication	water
Electric bilge pump	yes
Electrical installation	12/230
Start battery	2x 95 Ah
Service battery	2x 145 Ah HD
Battery charger	Dolphin
Inverter	Hunzei 2000 Watt
Diode battery combiners	yes
Shorepower	yes
Trimtabs	Lenco

NAVIGATION

Compass	yes
Compass on flybridge	yes
Electric compass	On pilot
Depth sounder	On Raymarine Axion
Fish finder	On Raymarine Axion
VHF	Cobra DSC
Autopilot	New Raymarine inside and on flybridge, new hydraulics
Rudder angle indicator	On pilot inside and on flybridge
Plotter/GPS	Raymarine Axion inside and on flybridge
AIS transceiver	yes
Camera	Fw looking on fly is foreseen
Navigation lights	yes

EQUIPMENT

Cockpit cover	yes
Bimini	yes
Sun awning	On all windows
Cockpit cushions	On flybridge, new

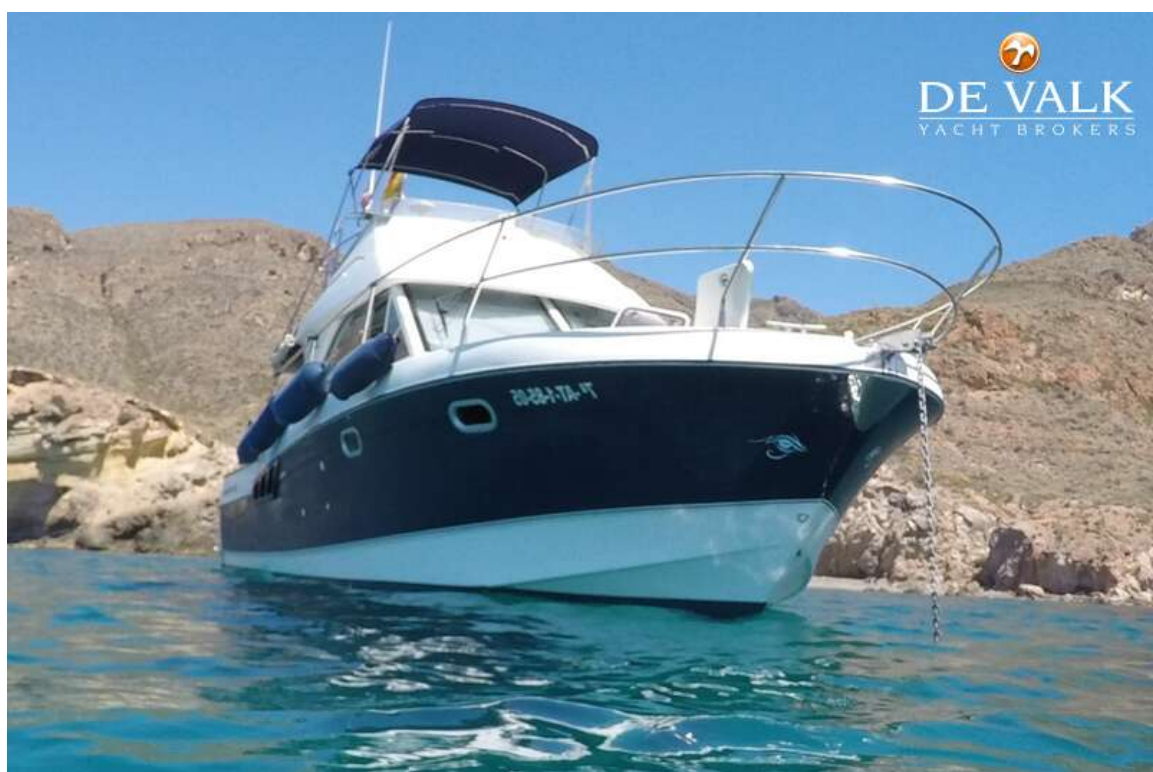


BENETEAU ANTARES 9.80

Cockpit table	Teak
Cockpit chairs	2
Bathing platform	Extended version, flexible, enlarge cockpit or swimming platform
Boarding ladder	New
Transom door	yes
Deck shower	yes
Anchor	Lewmar 33 lbs
Anchor chain	Galvanized
Anchor 2	Lewmar
Windlass	electrical
Lifejackets	yes
Wiper	yes
Window ventilator	Double
Horn	yes
Fenders	yes
Mooring lines	yes
TV	Nevir
Radio-cd player	Kenwood
Cockpit speakers	Sony
Speakers in salon	Pioneer
Fire extinguisher	In service
Latest extinguisher survey	2025
Extinguisher in engine room	yes
Extra info	All equip, flares, etc within service date



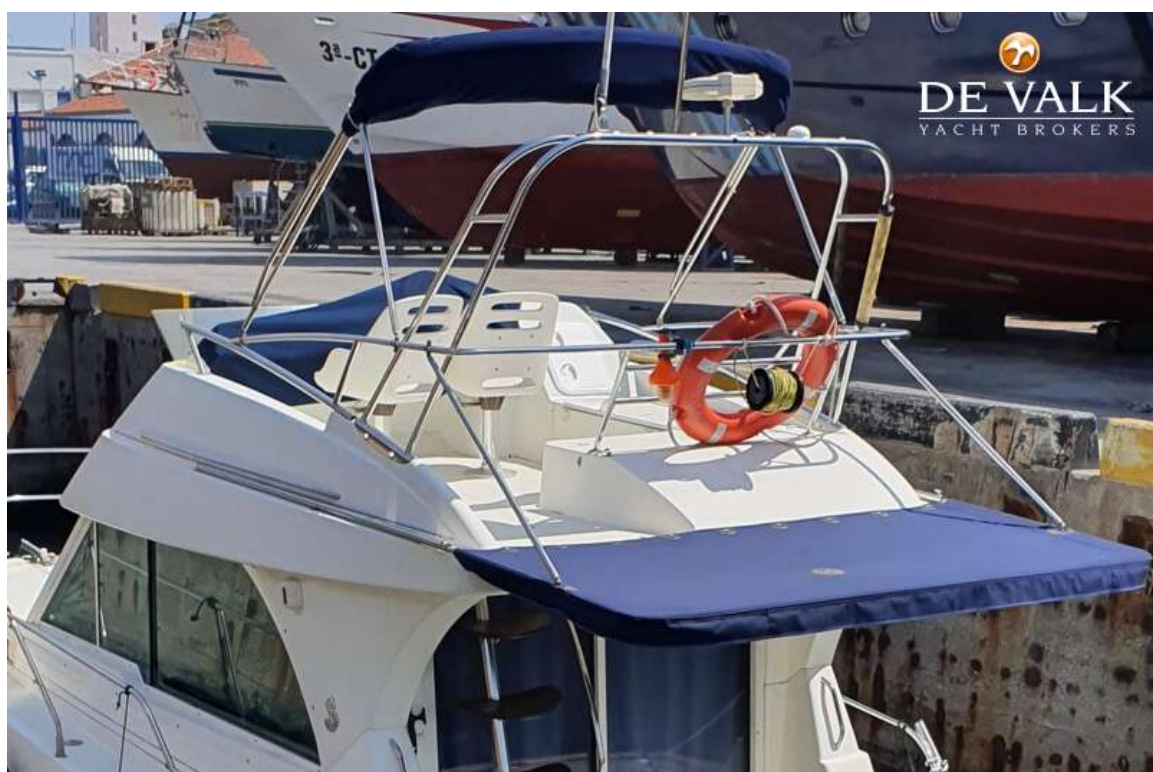
BENETEAU ANTARES 9.80



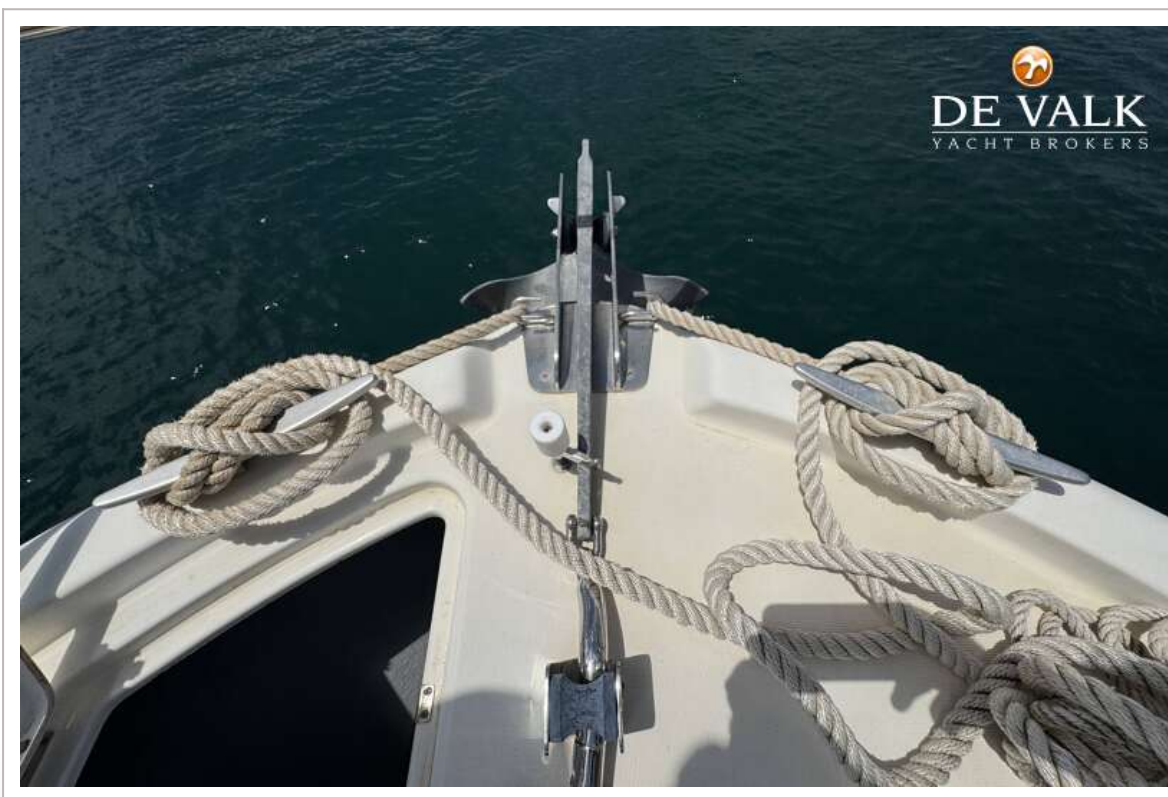
BENETEAU ANTARES 9.80



BENETEAU ANTARES 9.80



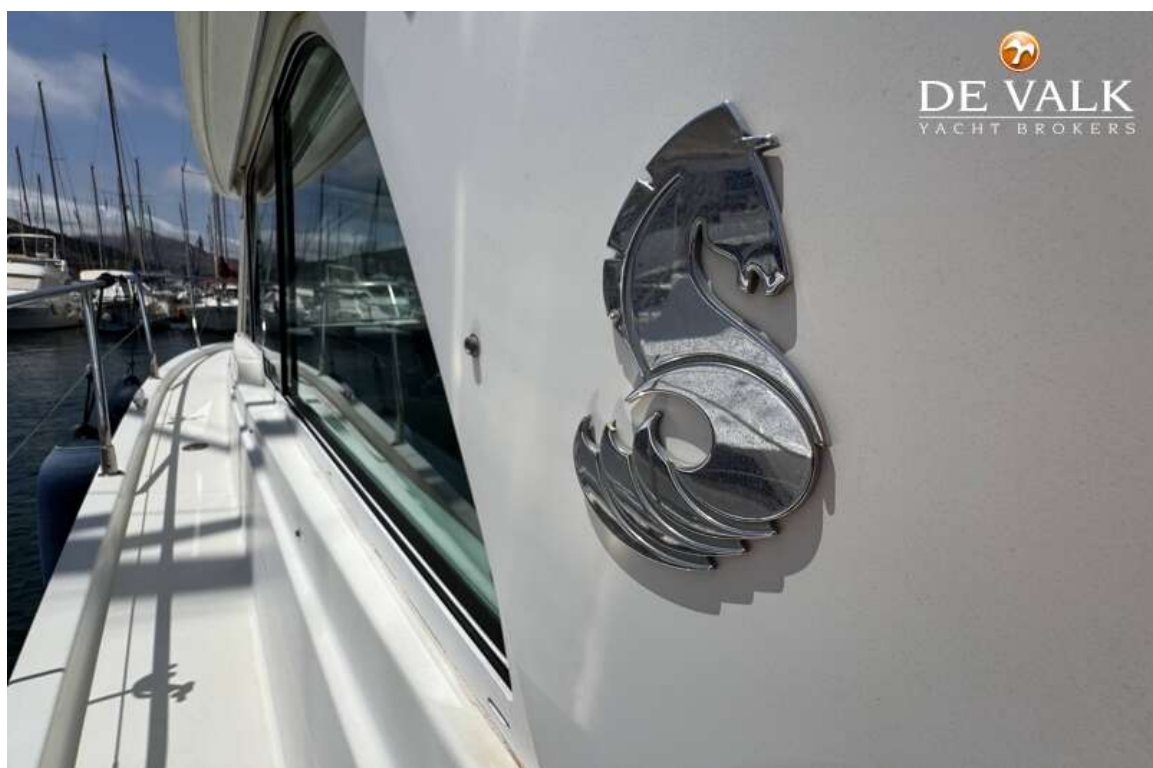
BENETEAU ANTARES 9.80



BENETEAU ANTARES 9.80



BENETEAU ANTARES 9.80



BENETEAU ANTARES 9.80



BENETEAU ANTARES 9.80



BENETEAU ANTARES 9.80



BENETEAU ANTARES 9.80



BENETEAU ANTARES 9.80



BENETEAU ANTARES 9.80



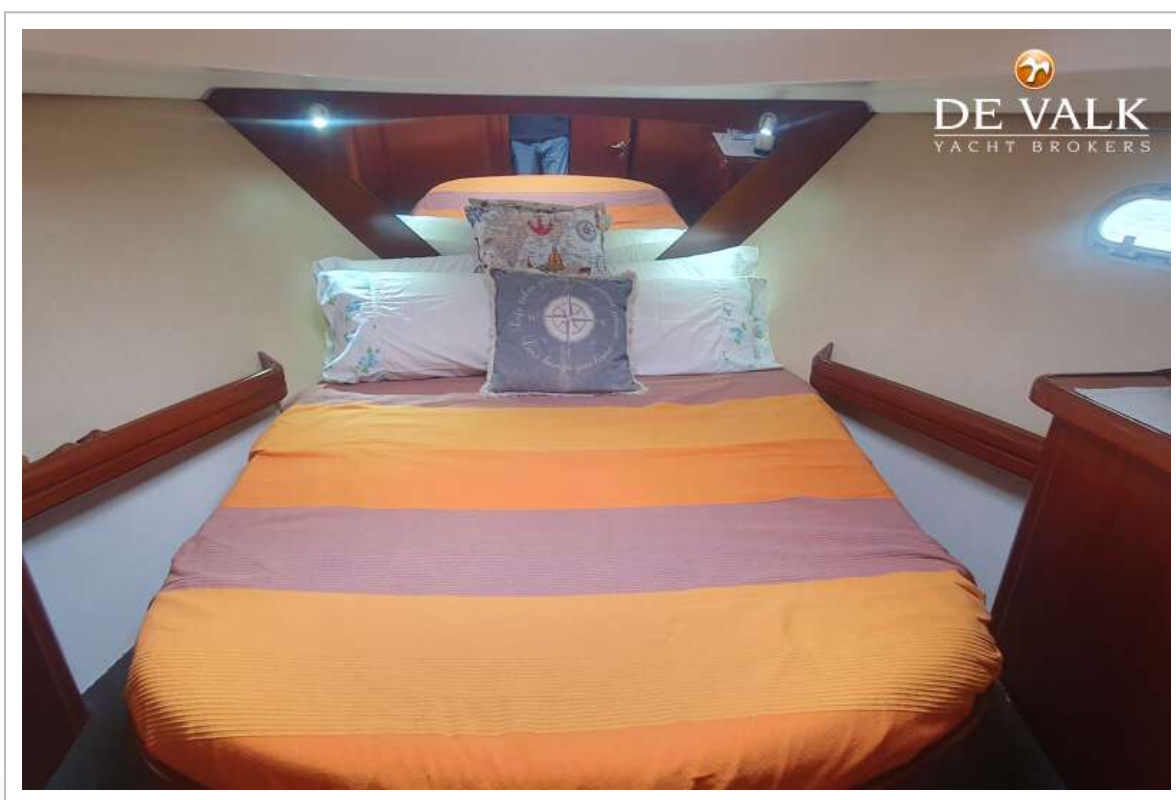
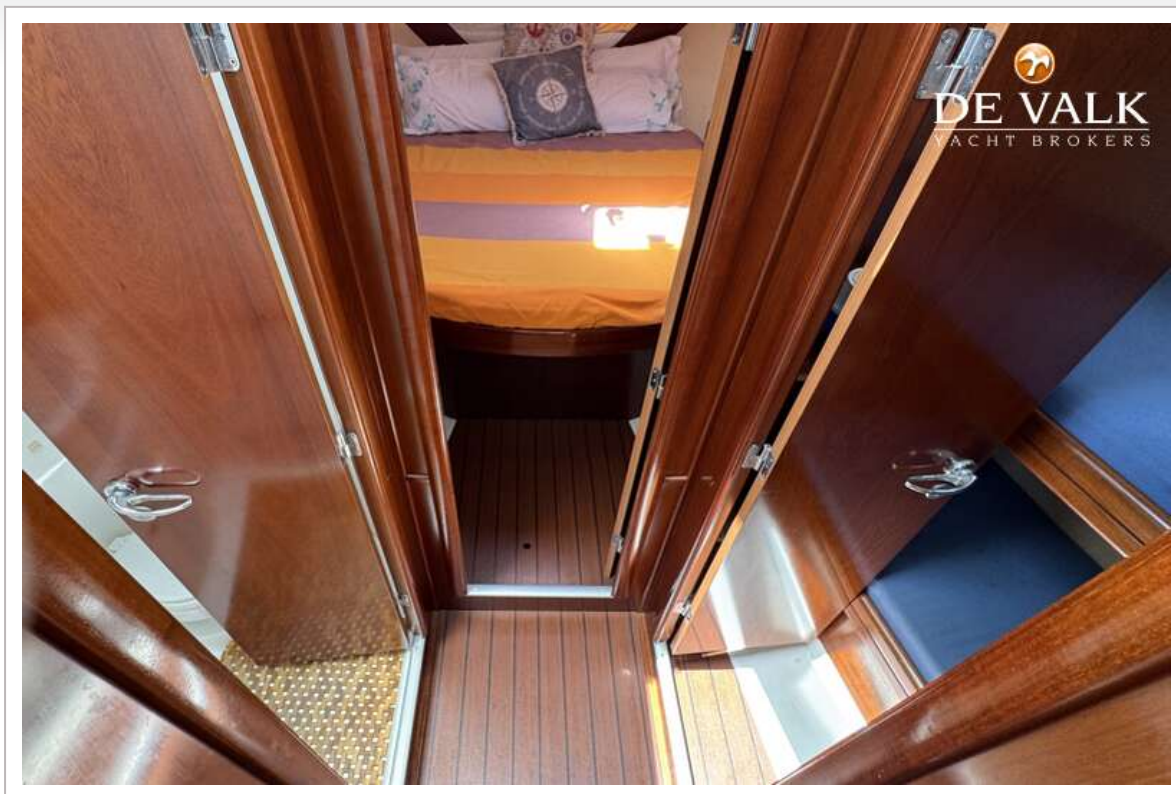
BENETEAU ANTARES 9.80



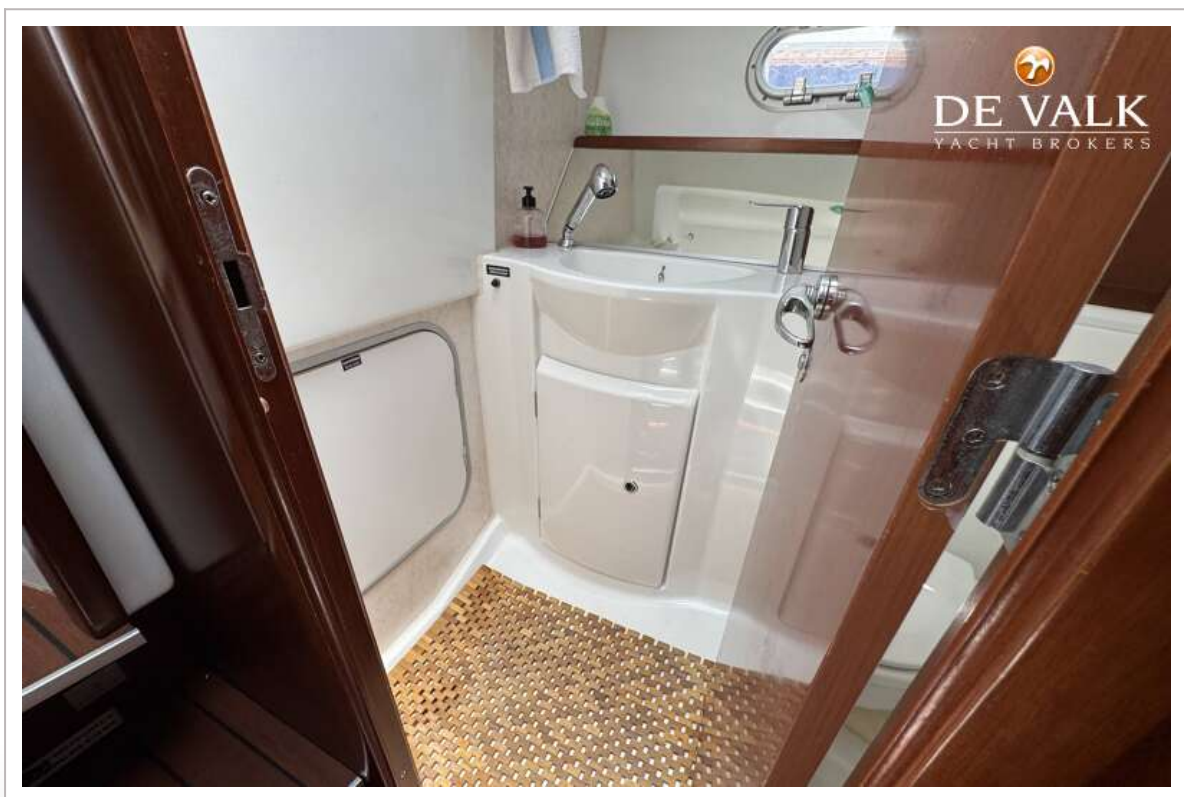
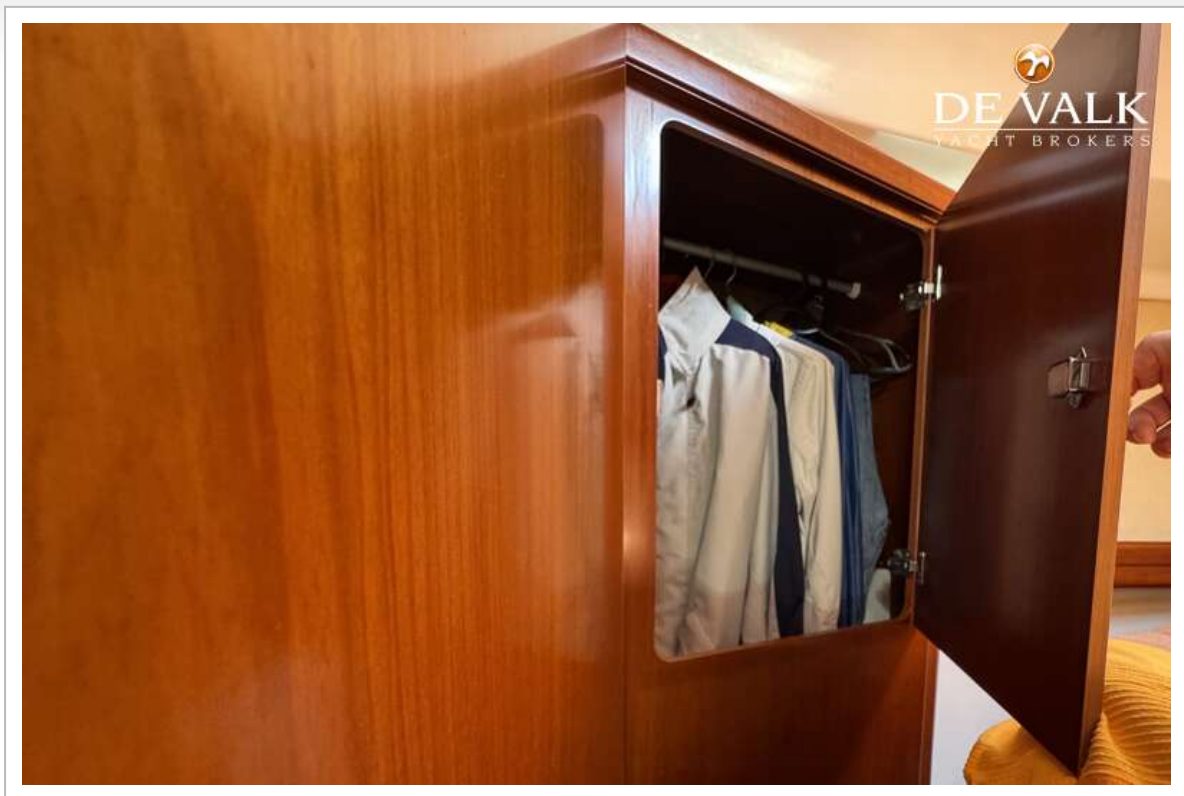
BENETEAU ANTARES 9.80



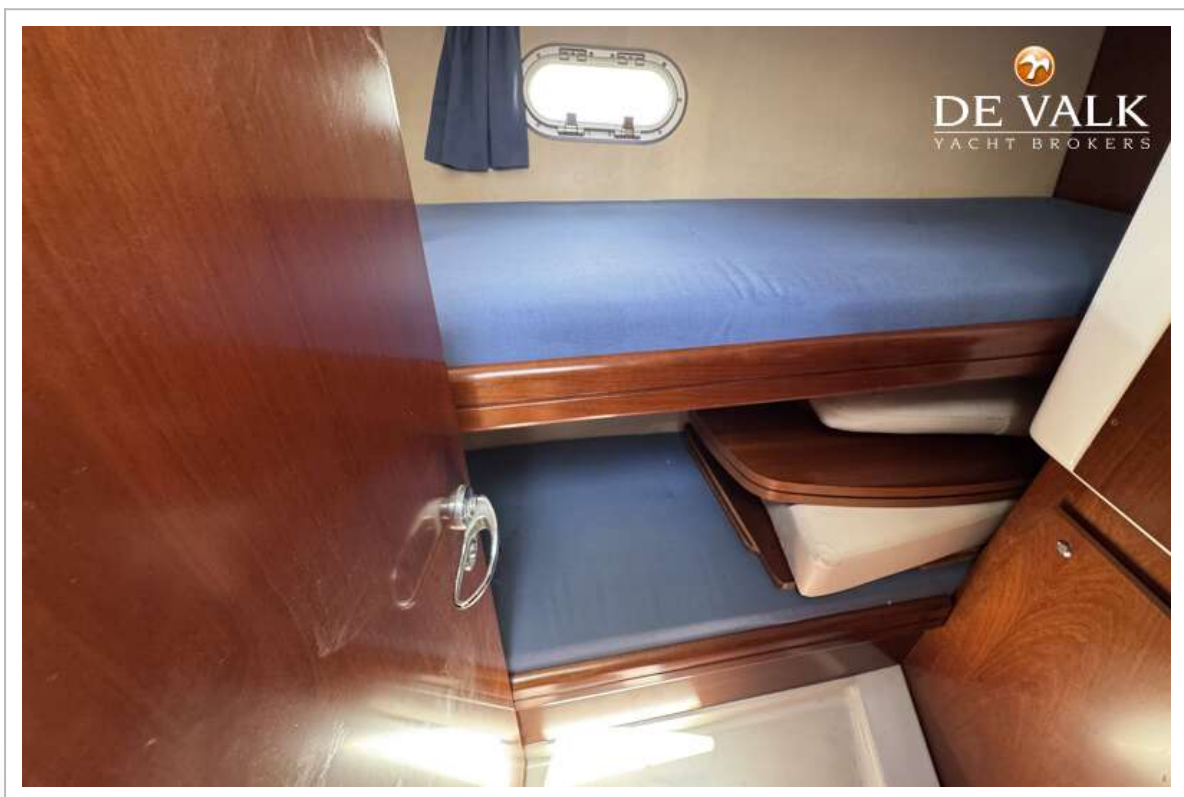
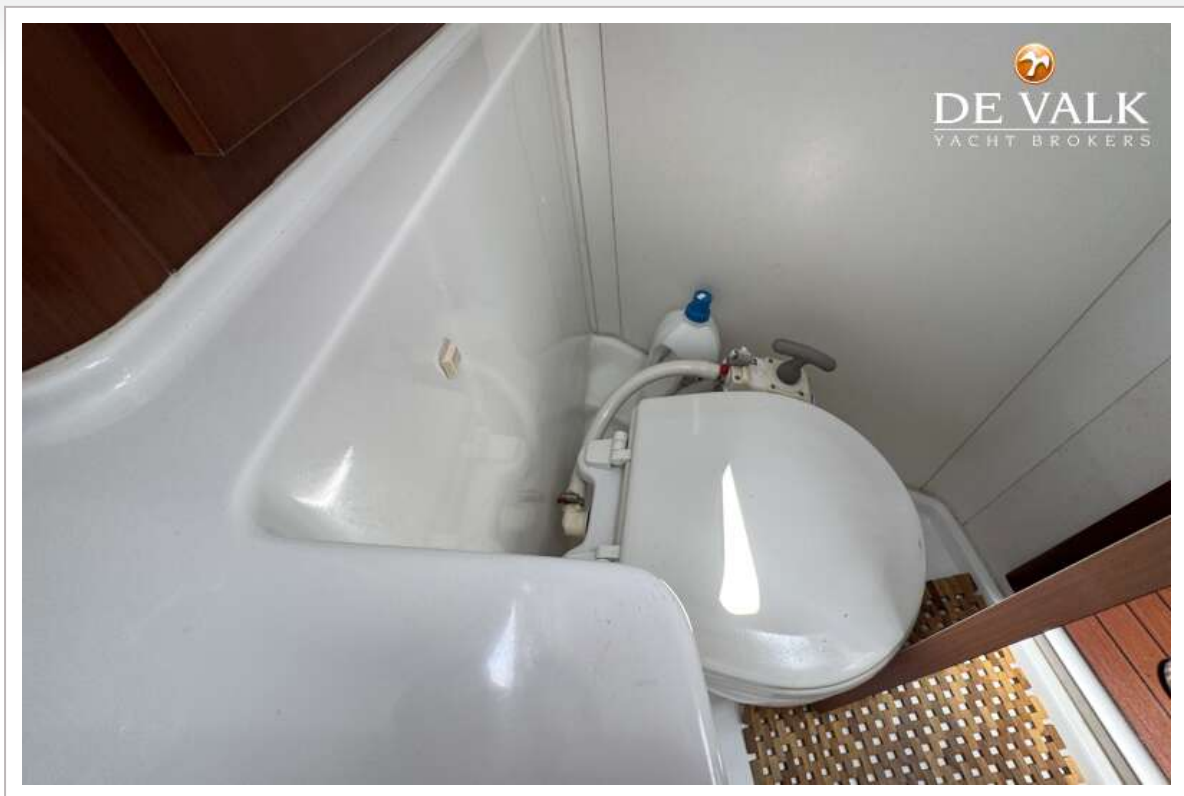
BENETEAU ANTARES 9.80



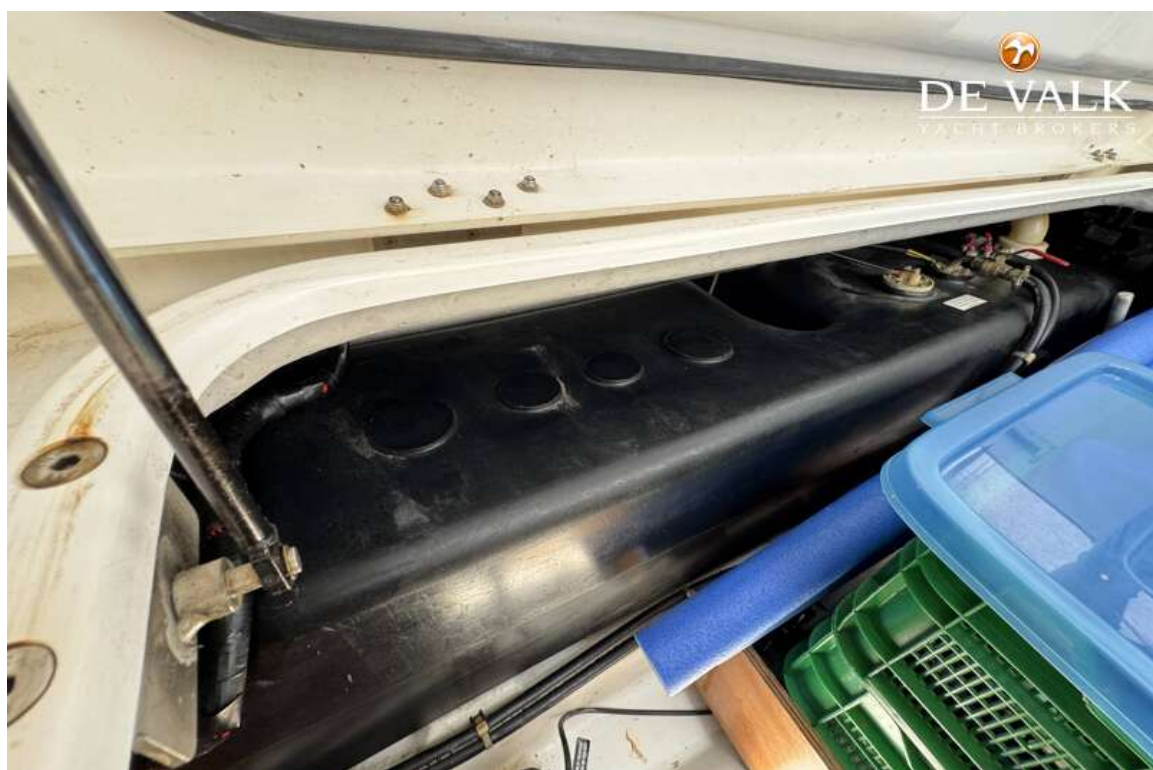
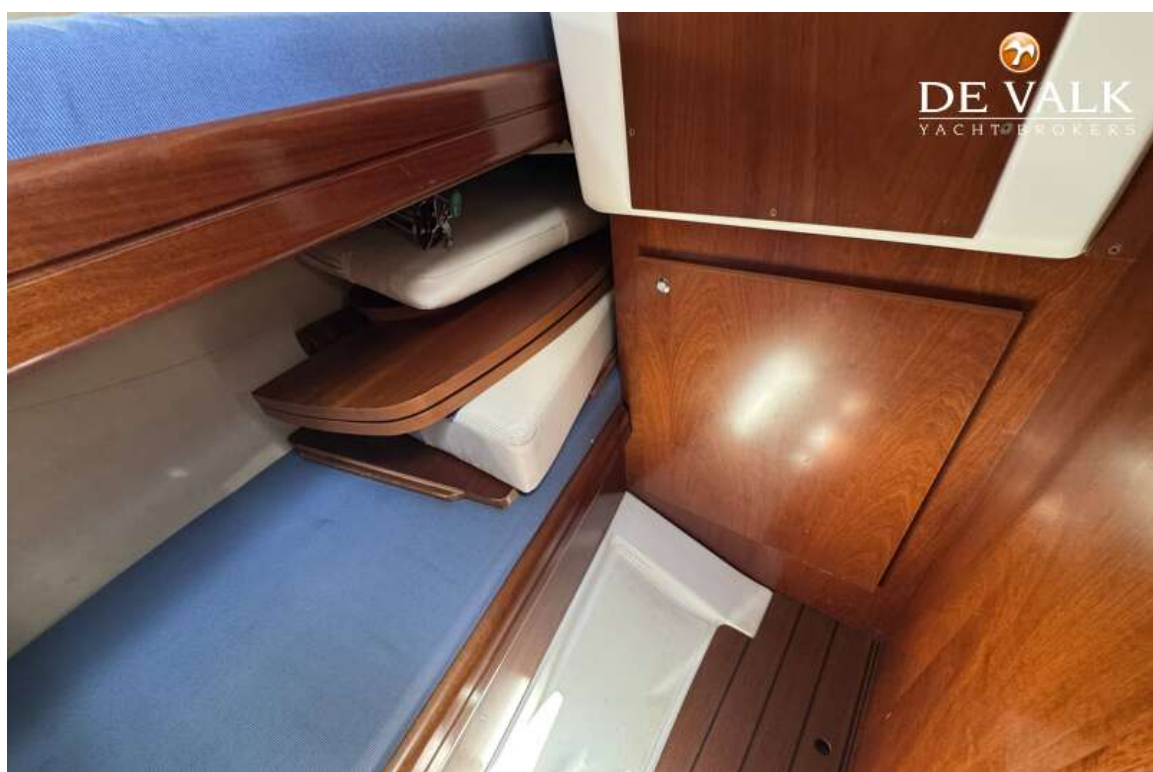
BENETEAU ANTARES 9.80



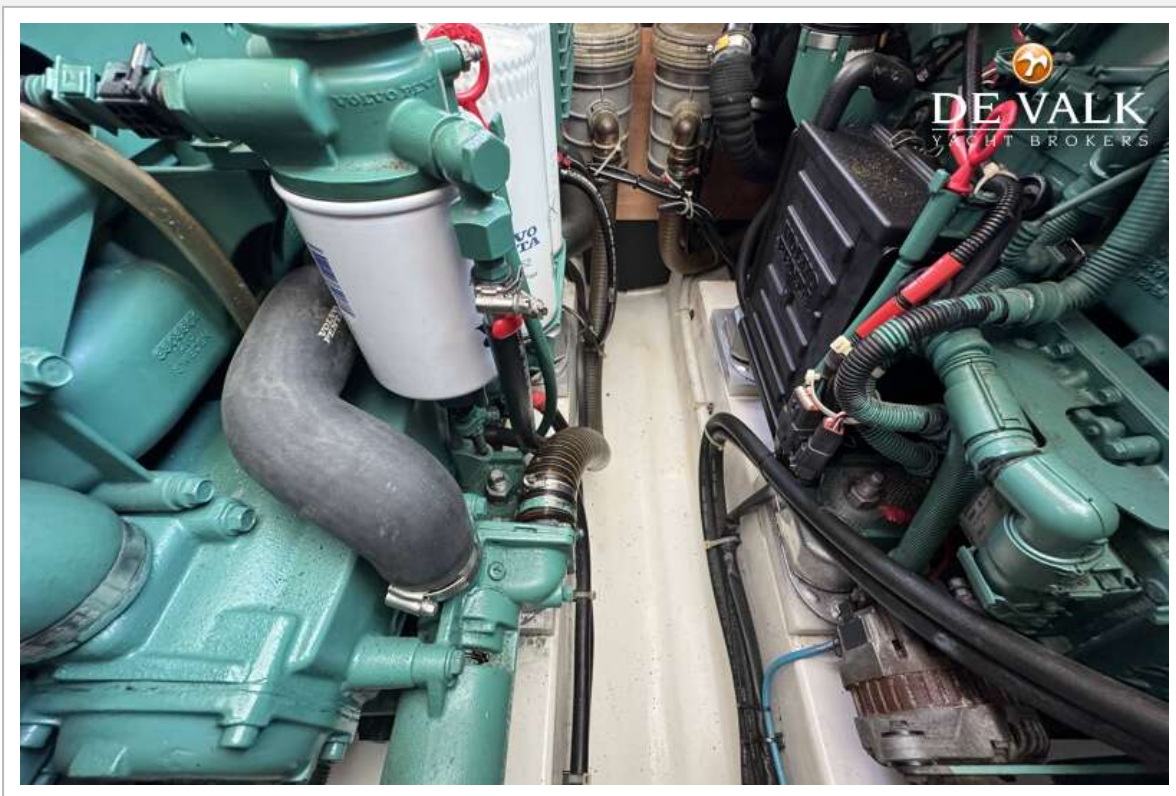
BENETEAU ANTARES 9.80



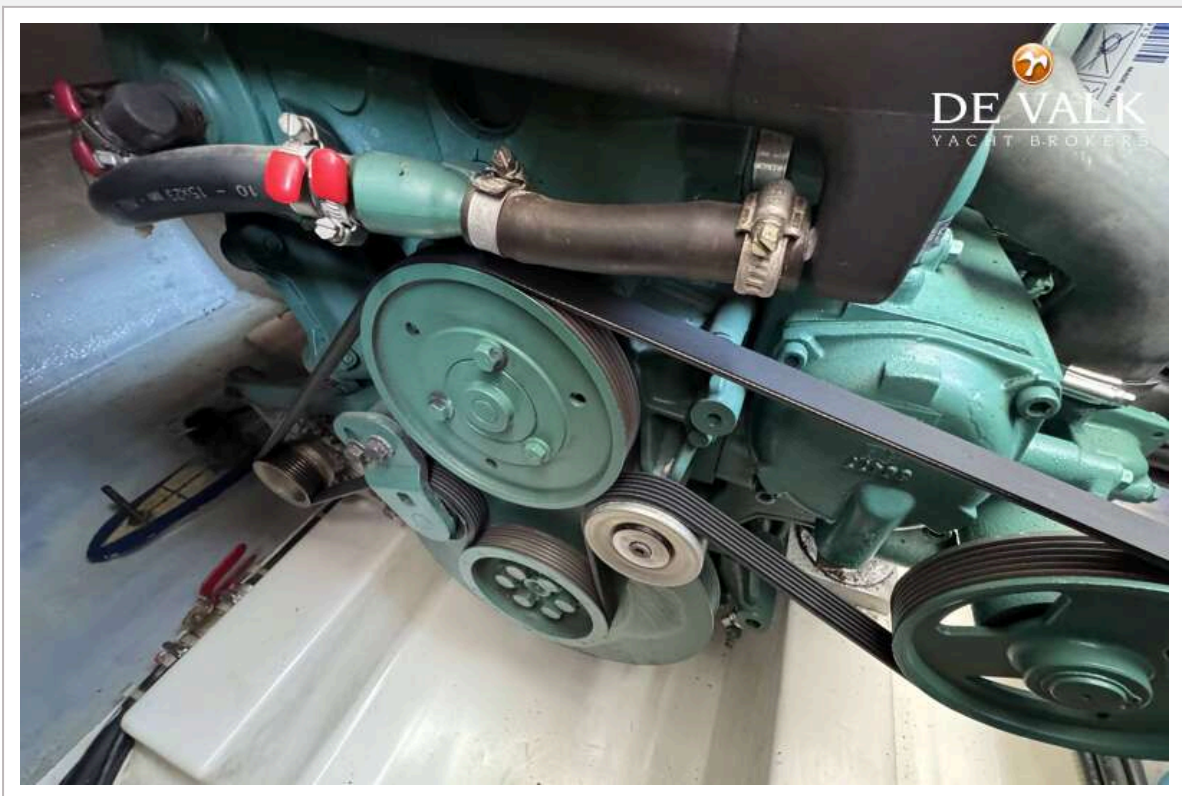
BENETEAU ANTARES 9.80



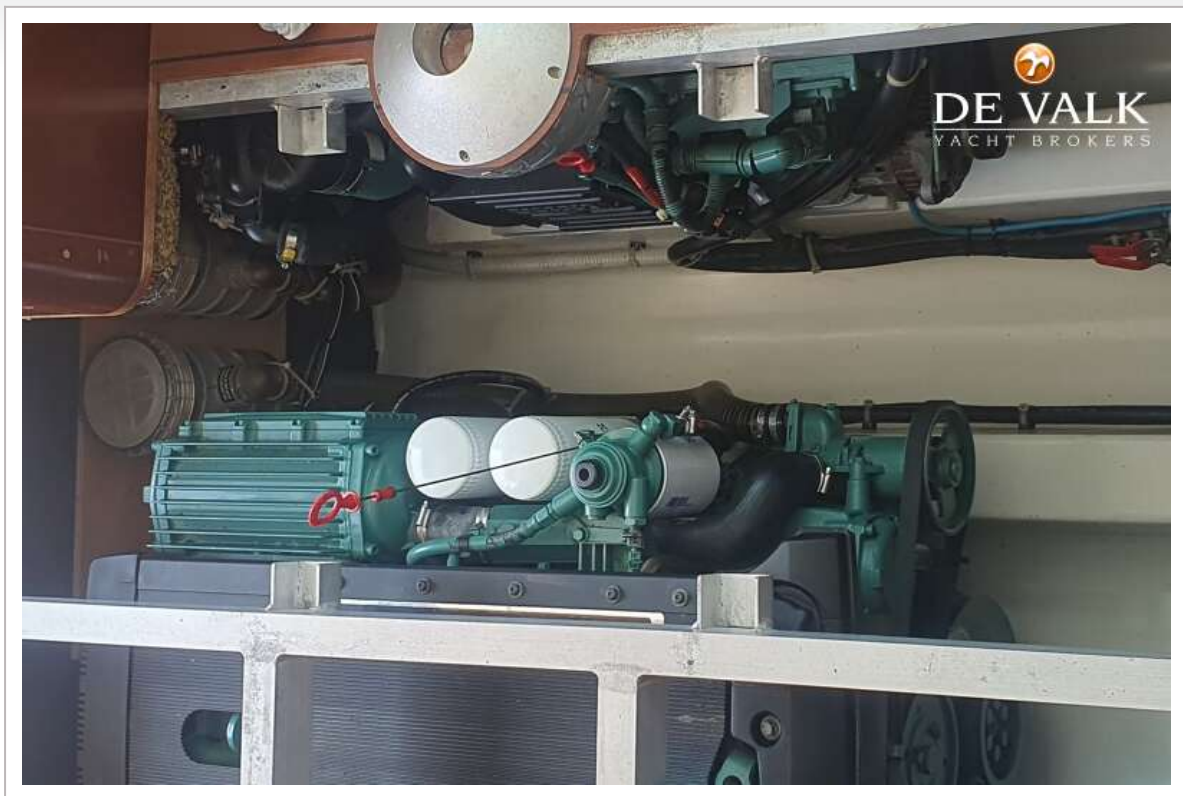
BENETEAU ANTARES 9.80



BENETEAU ANTARES 9.80



BENETEAU ANTARES 9.80



BENETEAU ANTARES 9.80

