



DE VALK  
YACHT BROKERS



## BERCKEMEYER 43



DE VALK  
YACHT BROKERS

## BROKER'S COMMENTS

Well-proven aluminium performance cruiser designed by Martin Menzner. The Berckemeyer 43 combines a sleek, no-nonsense hull with a cutter rig for offshore versatility. Built for serious passagemaking with composite sails, carbon spinnaker pole, and a practical, warm interior. Powered by a reliable Lombardini diesel engine and equipped with a generator for extended autonomy. Full Raymarine navigation suite on board, making her ready for bluewater cruising. Strong, light, and well-balanced — a superb opportunity for the demanding sailor.

*Jochem Heijermans*

## SPECIFICATIONS

<b>Dimensions</b>	13.10 x 4.20 x 1,30 / 2.80 (m)	<b>Builder</b>	Jabo
<b>Built</b>	2017	<b>Cabins</b>	3
<b>Material</b>	Aluminium	<b>Berths</b>	6
<b>Engine(s)</b>	1 x Lombardini KD11903M diesel	<b>Hp/Kw</b>	40.00 (hp), 29.44 (kw)
<b>Asking price</b>	€ 397.500 (VAT Paid)	<b>Lying</b>	

## CONTACT

<b>Sales office</b>	De Valk Belgium	<b>Telephone</b>	+32 586 80 218
<b>Address</b>	1401 PT Nieuwpoort BE	<b>E-mail</b>	belgium@devalk.nl

## DISCLAIMER

These particulars are given in good faith as supplied but cannot be guaranteed.



## GENERAL

<b>Model</b>	BERCKEMEYER 43
<b>Type</b>	sailing yacht
<b>LOA (m)</b>	13,10
<b>LWL (m)</b>	12,40
<b>Beam (m)</b>	4,20
<b>Draft (m)</b>	2,80
<b>Draft min (m)</b>	1,30
<b>Air draft (m)</b>	20,00
<b>Headroom (m)</b>	2,10
<b>Year built</b>	2017
<b>Builder</b>	Jabo
<b>Country</b>	Poland
<b>Designer</b>	Berckemeyer ( Martin Menzner)
<b>Displacement (t)</b>	10
<b>CE norm</b>	A
<b>Hull material</b>	aluminium
<b>Hull thickness (mm)</b>	6-8-10
<b>Hull shape</b>	round-bilged
<b>Keel type</b>	lifting keel Double rudder
<b>Superstructure material</b>	aluminium
<b>Superstructure (mm)</b>	5
<b>Rubbing strake</b>	aluminum
<b>Deck material</b>	aluminium
<b>Deck finish</b>	non-skid paint
<b>Superstructure deck finish</b>	non-skid paint
<b>Cockpit deck finish</b>	paint
<b>Antifouling (year)</b>	04/2025
<b>Window frame</b>	aluminium
<b>Window material</b>	polycarbonate
<b>Deckhatch</b>	4x



<b>Portholes</b>	aluminium
<b>Insulation</b>	yes
<b>Fuel tank (litre)</b>	aluminium 240
<b>Level indicator (fuel tank)</b>	yes
<b>Fuel daytank (litre)</b>	stainless steel 58
<b>Level indicator (daytank)</b>	yes
<b>Freshwater tank (litre)</b>	aluminium 300
<b>Blackwater tank (litre)</b>	stainless steel 80
<b>Blackwater tank extraction</b>	deck extraction + pump
<b>Tiller</b>	yes

## ACCOMMODATION

<b>Cabins</b>	3
<b>Berths</b>	6
<b>Interior</b>	oak
<b>Floor</b>	carpet
<b>Saloon</b>	yes
<b>Headroom saloon (m)</b>	2,10
<b>Heating</b>	diesel ducted hot air Webasto 3,3 Kw
<b>Chart table</b>	yes
<b>Sliding door to cockpit</b>	yes
<b>Galley</b>	yes
<b>Countertop</b>	corian
<b>Sink</b>	stainless steel
<b>Cooker</b>	induction 2 burner
<b>Microwave/oven combi</b>	Samsung
<b>Fridge</b>	Dometic
<b>Freezer</b>	Dometic
<b>Hot water system</b>	220V + engine 40l
<b>Water pressure system</b>	electrical
<b>Owners cabin</b>	double bed Bow



<b>Wardrobe</b>	hanging and shelves
<b>Bathroom</b>	shared
<b>Toilet</b>	shared
<b>Toilet system</b>	manual
<b>Wash basin</b>	in the bathroom
<b>Shower</b>	shared
<b>Guest cabin 1</b>	double bed Aft stb
<b>Wardrobe</b>	hanging and shelves
<b>Guest cabin 2</b>	Aft port

## MACHINERY

<b>No of engines</b>	1
<b>Make</b>	Lombardini
<b>Type</b>	KD11903M
<b>HP</b>	40
<b>kW</b>	29.44
<b>Fuel</b>	diesel
<b>Year installed</b>	2017
<b>Engine cooling system</b>	freshwater heat exchanger
<b>Drive</b>	shaft
<b>Engine controls</b>	bowden cable
<b>Gearbox</b>	hydraulic
<b>Exhaust</b>	watercooled
<b>Propeller type</b>	folding MaxProp 20"
<b>Shaft lubrication</b>	water
<b>Manual bilge pump</b>	yes
<b>Electric bilge pump</b>	yes
<b>Bilge alarm</b>	yes
<b>Electrical installation</b>	12V/220V
<b>Generator</b>	silent separator Lombardini 4Kva
<b>Batteries</b>	Lithium 800Ah



<b>Generator battery</b>	Lithium 320Ah
<b>Battery monitor</b>	yes
<b>Inverter</b>	yes
<b>Battery charger/inverter</b>	Victron quattro 12V/120Ah/3000W
<b>Shorepower</b>	with cable

## NAVIGATION

<b>Compass</b>	yes
<b>Multi control display</b>	3x Raymarine
<b>Depth sounder/log</b>	Raymarine
<b>VHF</b>	Raymarine
<b>Radar/GPS/plotter</b>	Raymarine
<b>AIS transceiver</b>	Raymarine 650
<b>Navigation lights</b>	yes

## EQUIPMENT

<b>Sprayhood with grab rail</b>	yes
<b>Bimini</b>	yes
<b>Cockpit cushions</b>	yes
<b>Cockpit table</b>	yes
<b>Bathing platform</b>	yes
<b>Deck shower</b>	W+C
<b>Anchor</b>	15KG
<b>Windlass</b>	electrical
<b>Capstan</b>	yes
<b>Sea railing</b>	wire
<b>Grab rail (superstructure)</b>	stainless steel
<b>Railing side opening gates</b>	2x
<b>Life raft</b>	container
<b>Life raft (pers)</b>	6 persoons
<b>Fenders</b>	yes



**Mooring lines** yes

## RIGGING

<b>Rigging</b>	sloop-cutter
<b>Standing rigging</b>	wire
<b>Brand mast</b>	Z-Spar
<b>Material mast</b>	aluminium
<b>Spreaders</b>	2x
<b>Fully battened mainsail</b>	U sails
<b>Cutterstay</b>	U Sails
<b>Genoa</b>	U Sails
<b>Genoa furler</b>	Profurl
<b>A-symmetric spi</b>	U Sails (snuffer)
<b>Stormjib</b>	Wittewrongel
<b>Reefing System</b>	slabreefing
<b>Backstay adjuster</b>	mechanical
<b>Primary sheet winch</b>	yes
<b>Genoa sheetwinches</b>	1x electric STB
<b>Spi-pole</b>	carbon



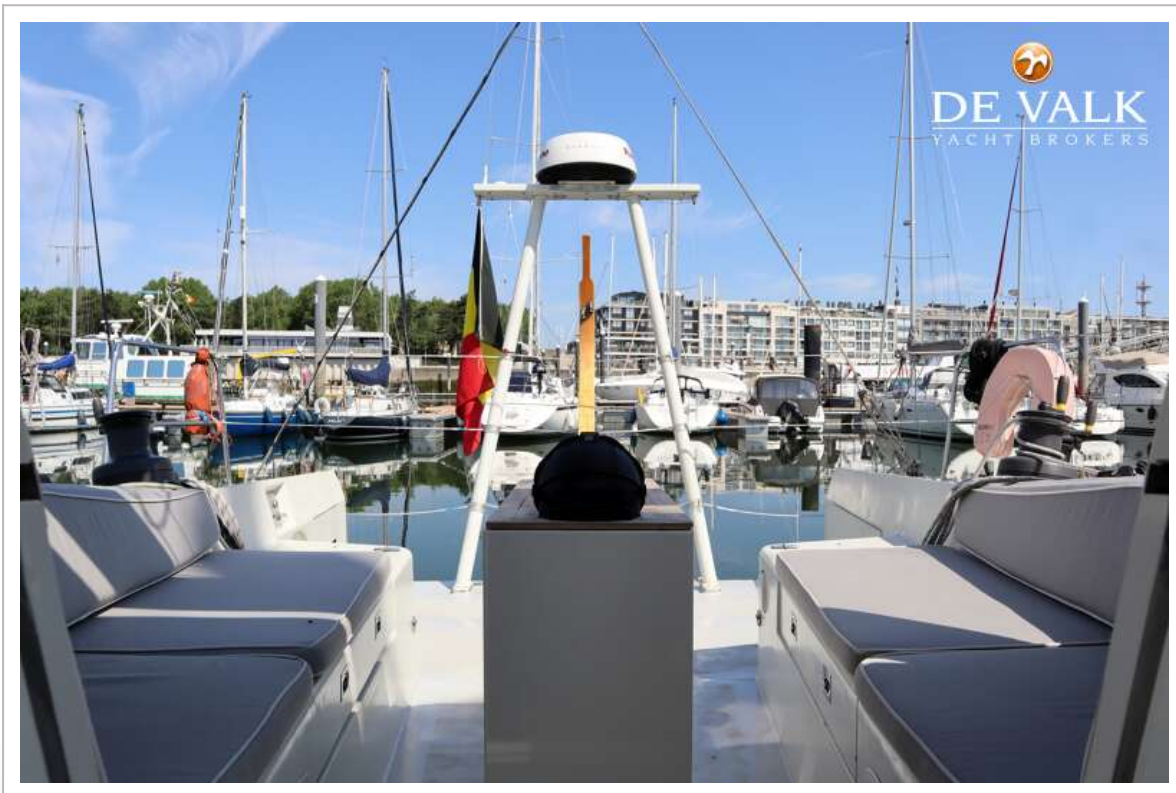
# BERCKEMEYER 43





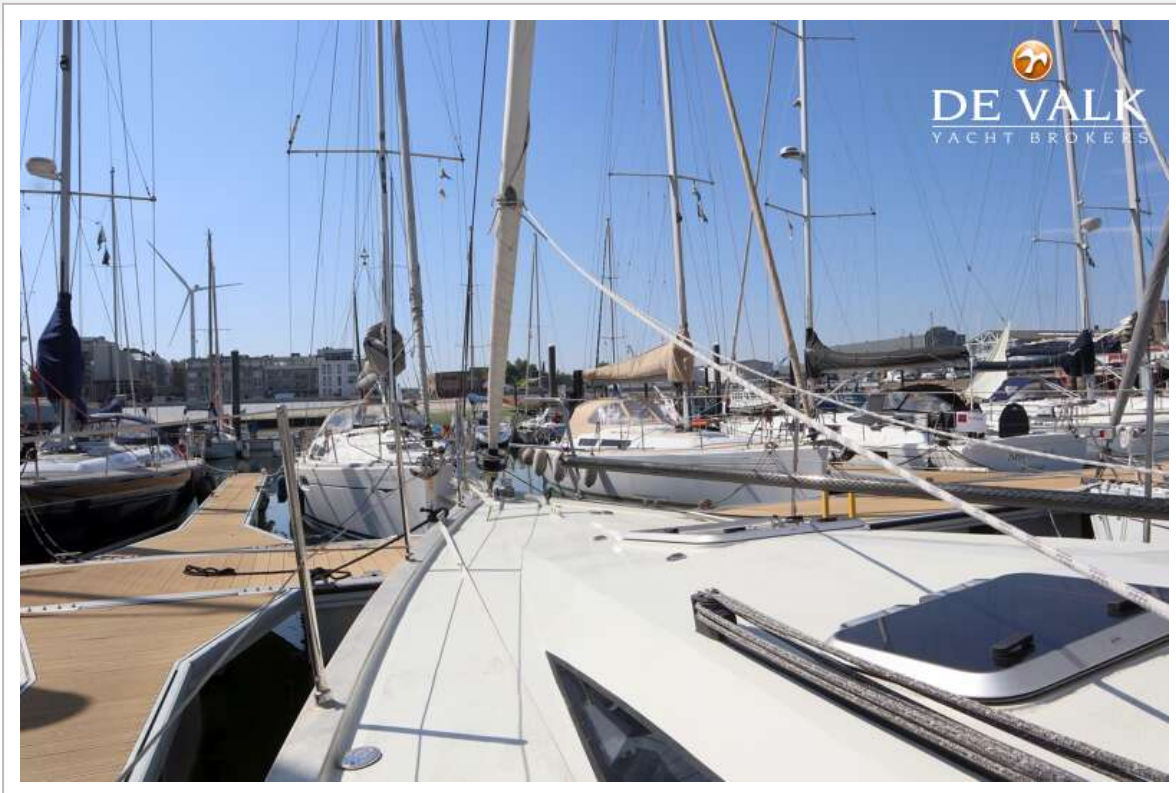












# BERCKEMEYER 43

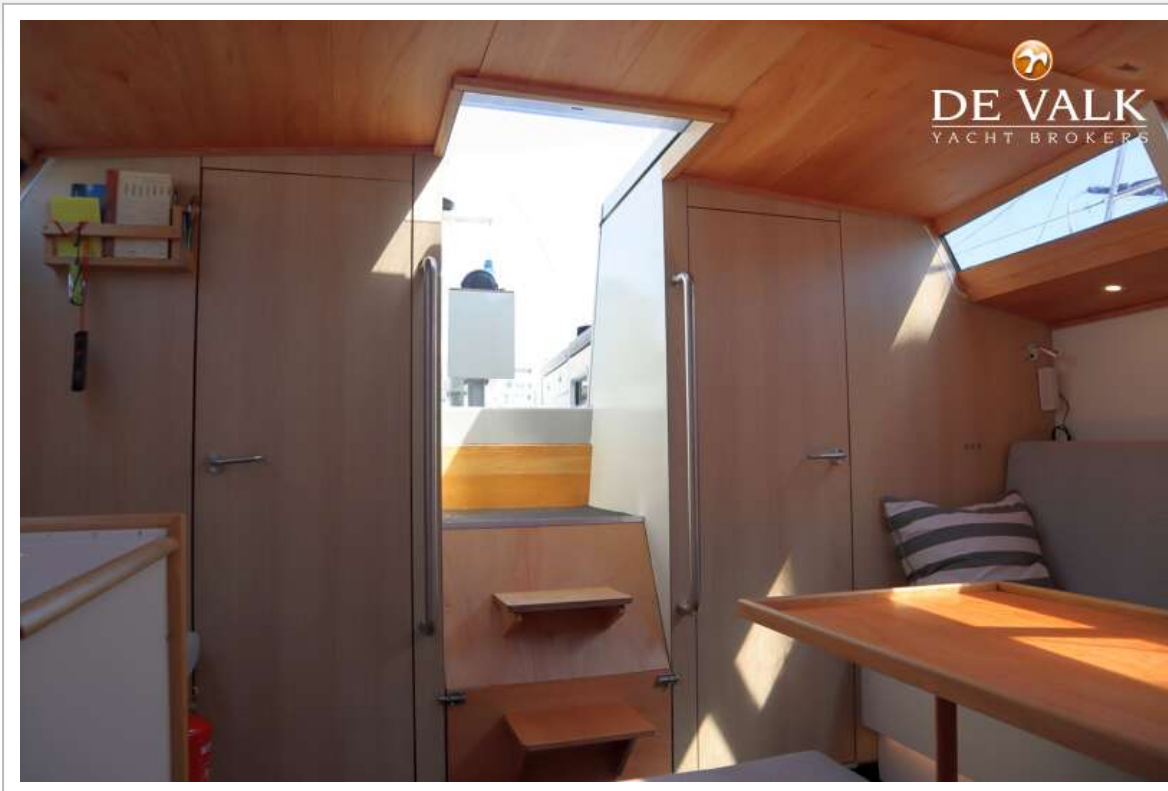






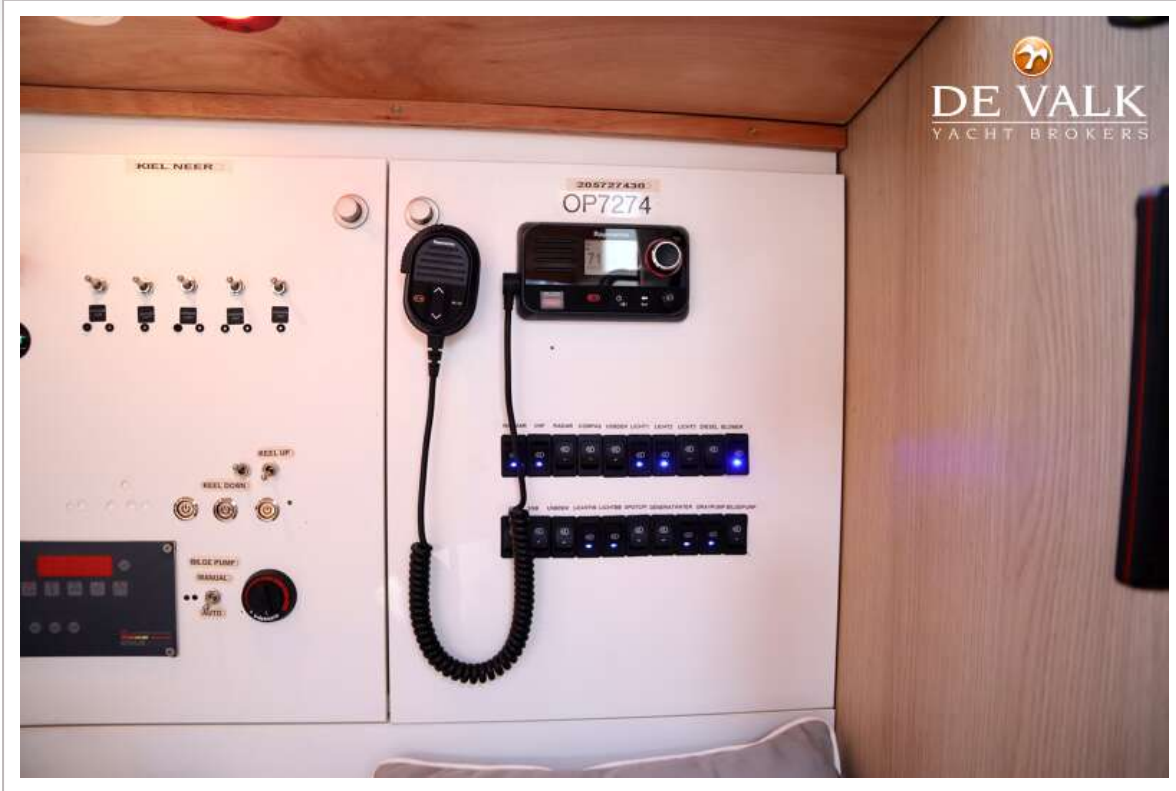


# BERCKEMEYER 43

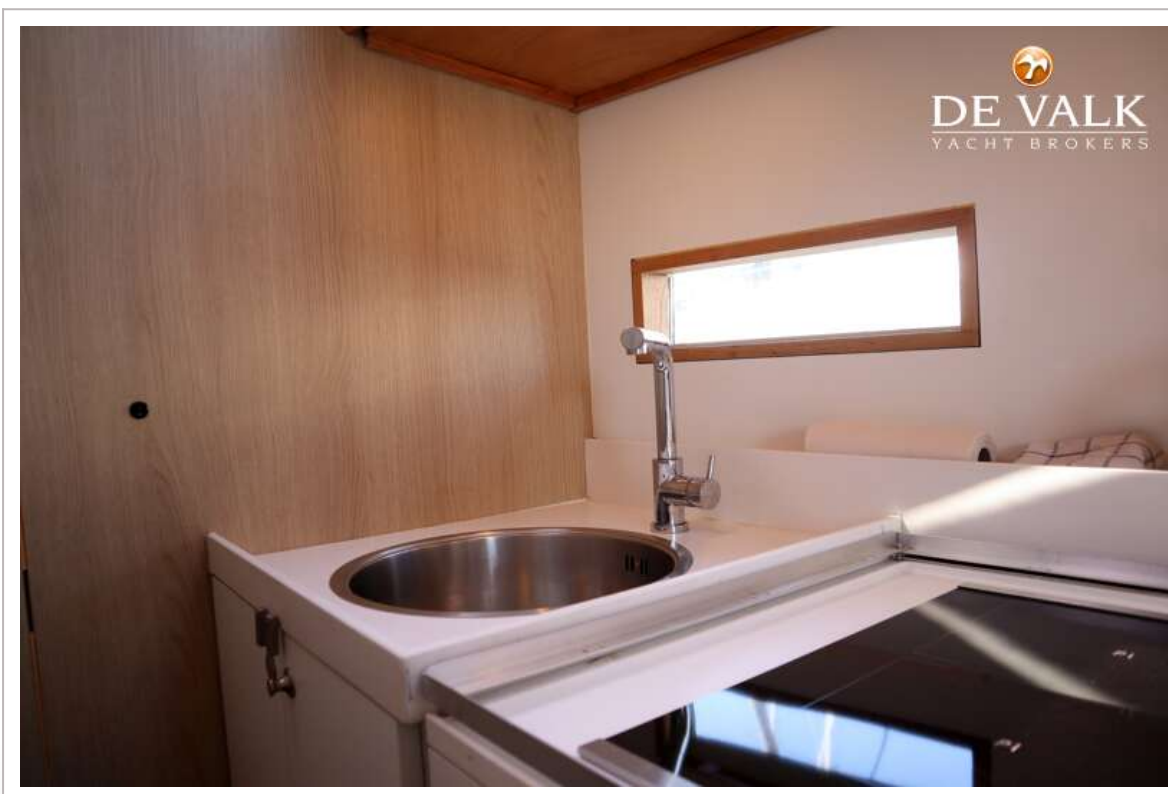


# BERCKEMEYER 43





# BERCKEMEYER 43



# BERCKEMEYER 43

