



HANSE 388



**DE VALK**  
YACHT BROKERS

## BROKER'S COMMENTS

Hanse 388 "Maan" built in 2023 and launched in May 2024. Built at the Hanse AG shipyard and designed by Judel/Vrolijk & co / HanseYachts Design. This three cabin sailing yacht is privately owned (one owner) and sailed mostly on the IJsselmeer and Markermeer in The Netherlands. Equipped with a Yanmar diesel engine and a Sleipner electric bowthruster. Easy sailing with a selftacking jib and all the lines can be handled from the cockpit. Viewing is possible by appointment in Monnickendam.

*Reinier van der Wolf*

## SPECIFICATIONS

<b>Dimensions</b>	11.40 x 3.90 x 1.62 (m)	<b>Builder</b>	Hanse Yacht AG
<b>Built</b>	2023	<b>Cabins</b>	3
<b>Material</b>	GRP	<b>Berths</b>	6
<b>Engine(s)</b>	1 x Yanmar 3YM30AE diesel	<b>Hp/Kw</b>	29.00 (hp), 21.34 (kw)
<b>Asking price</b>	€ 265.000 (VAT Paid)	<b>Lying</b>	contact Monnickendam

## CONTACT

<b>Sales office</b>	De Valk Monnickendam B.V.	<b>Telephone</b>	+31 (0)299 65 63 50
<b>Address</b>	Hoogedijk 6 1145 PM Katwoude NL	<b>E-mail</b>	monnickendam@devalk.nl

## DISCLAIMER

These particulars are given in good faith as supplied but cannot be guaranteed.



## GENERAL

<b>Model</b>	HANSE 388
<b>Type</b>	sailing yacht
<b>LOA (m)</b>	11,40
<b>Beam (m)</b>	3,90
<b>Draft (m)</b>	1,62
<b>Year built</b>	2023
<b>Launched</b>	Delivered to her first en current private owner 05-2024
<b>Builder</b>	Hanse Yacht AG
<b>Country</b>	Germany
<b>Designer</b>	Judel/Vrolijk & co / HanseYachts Design
<b>Displacement (t)</b>	11
<b>CE norm</b>	A
<b>Hull material</b>	GRP
<b>Hull colour</b>	white
<b>Hull shape</b>	round-bilged
<b>Keel type</b>	fin keel with bulb
<b>Superstructure material</b>	GRP
<b>Rubbing strake</b>	wood
<b>Deck material</b>	GRP
<b>Deck finish</b>	non-skid moulded in
<b>Cockpit deck finish</b>	teak
<b>Window material</b>	polycarbonate
<b>Deckhatch</b>	yes
<b>Fuel tank (litre)</b>	Approx. 160 litre
<b>Level indicator (fuel tank)</b>	In the screen at the chart table
<b>Freshwater tank (litre)</b>	Approx. 295 litre
<b>Level indicator (freshwater)</b>	In the screen at the chart table
<b>Blackwater tank (litre)</b>	Approx. 35 litre
<b>Level indicator (blackwater)</b>	Gobius, in the bathroom
<b>Wheel steering</b>	cable steering   A double Jefa wheel steering system in the cockpit



Outside helm position | Double helmposition in the cockpit

## ACCOMMODATION

Cabins	3
Berths	6
Layout	Owners cabin with V-berth in the front, round seat, chart table, galley, bathroom, two double cabins in the stern
Floor	woodprint
Open cockpit	yes
Saloon	yes
Heating	diesel ducted hot air Webasto
Chart table	yes
Sliding door to cockpit	yes
Galley	yes
Countertop	corian
Sink	stainless steel   Double stainless steel sink
Cooker	calor gas   Eno two burner
Oven	Eno
Fridge	Isothemp
Freezer	Freezing compartment in the fridge
Hot water system	yes
Water pressure system	electrical Jabsco Par-Max 2.9
Owners cabin	v-bed
Wardrobe	yes
Bathroom	shared
Toilet	Jabsco
Toilet system	manual
Wash basin	yes
Shower	yes
Guest cabin 1	double bed
Wardrobe	yes



Guest cabin 2	double bed
Wardrobe	yes

## MACHINERY

No of engines	1
Make	Yanmar
Type	3YM30AE
HP	29
kW	21.34
Fuel	diesel
Engine cooling system	freshwater heat exchanger
Drive	sail-drive
Saildrive seal	yes
Engine controls	bowden cable
Bowthruster	electric   Sleipner
Exhaust	watercooled
Manual bilge pump	yes
Electric bilge pump	yes
Start battery	yes
Service battery	2x AMG
Battery monitor	In the screen at the chart table
Battery charger	Victron Blue Smart charger 12/30-1
Shorepower	with cable

## NAVIGATION

Depth sounder	B&G
Log	B&G
VHF	B&G
VHF handheld	Icom IC-M25
Autopilot	B&G autopilot with remote
Plotter/GPS	B&G Vulcan 7



AIS transponder	yes
Navigation lights	yes

## EQUIPMENT

Sprayhood	yes
Cockpit cushions	yes
Cockpit table	yes
Bathing platform	Folding bathing platform
Boarding ladder	stainless steel
Deck shower	yes
Anchor	Delta
Anchor chain	Galvanized chain
Windlass	electrical   Quick Genius
Sea railing	wire
Grab rail (superstructure)	stainless steel
Railing side opening gates	yes
Pushpit	yes
Pulpit	yes
Fenders	yes
Mooring lines	yes
Radio	yes

## RIGGING

Rigging	sloop
Standing rigging	wire
Brand mast	Seldén
Material mast	aluminium
Spreaders	2x
Mainsail	yes
Mainsail cover	yes
Battcars	yes



<b>Fully battened mainsail</b>	yes
<b>Genoa furler</b>	Furlex 204S
<b>Self tacking jib installation</b>	yes
<b>Reefing System</b>	quick-one-line-reefing
<b>Boomvang</b>	Selden Rodkicker 20
<b>Primary sheet winch</b>	2 x Lewmar 40



# HANSE 388



# HANSE 388



# HANSE 388



# HANSE 388

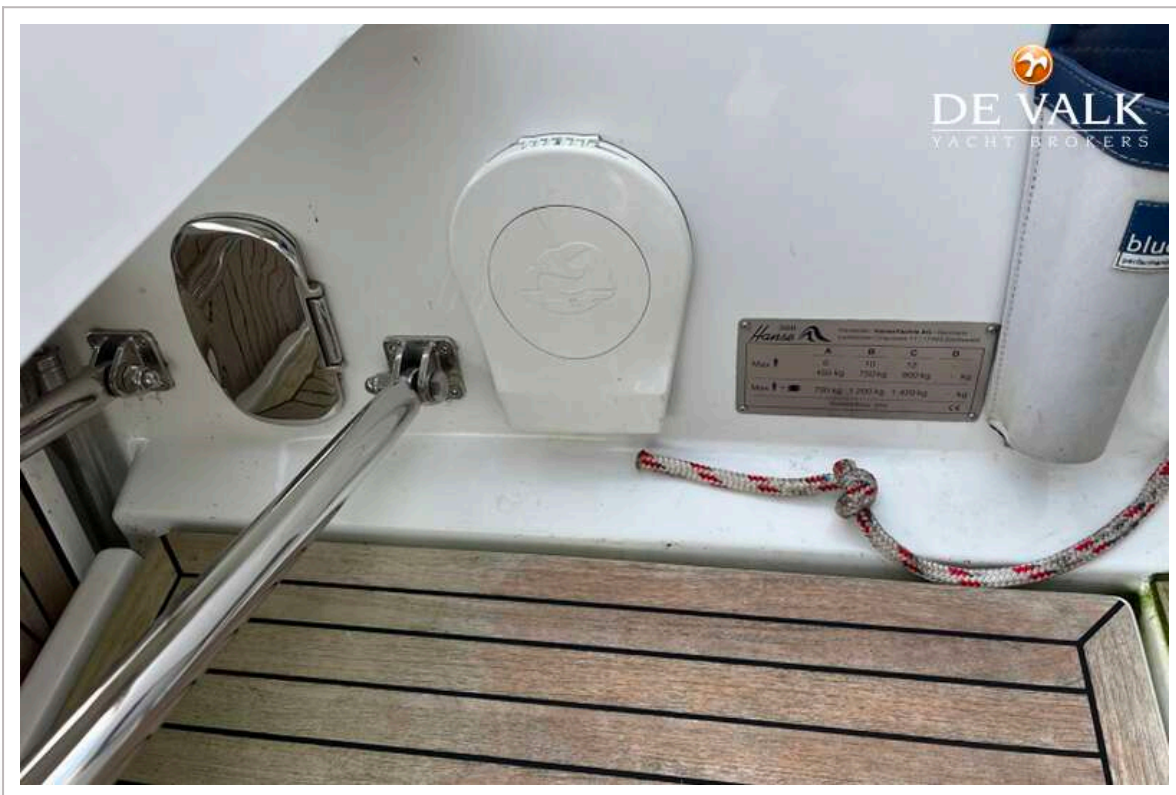
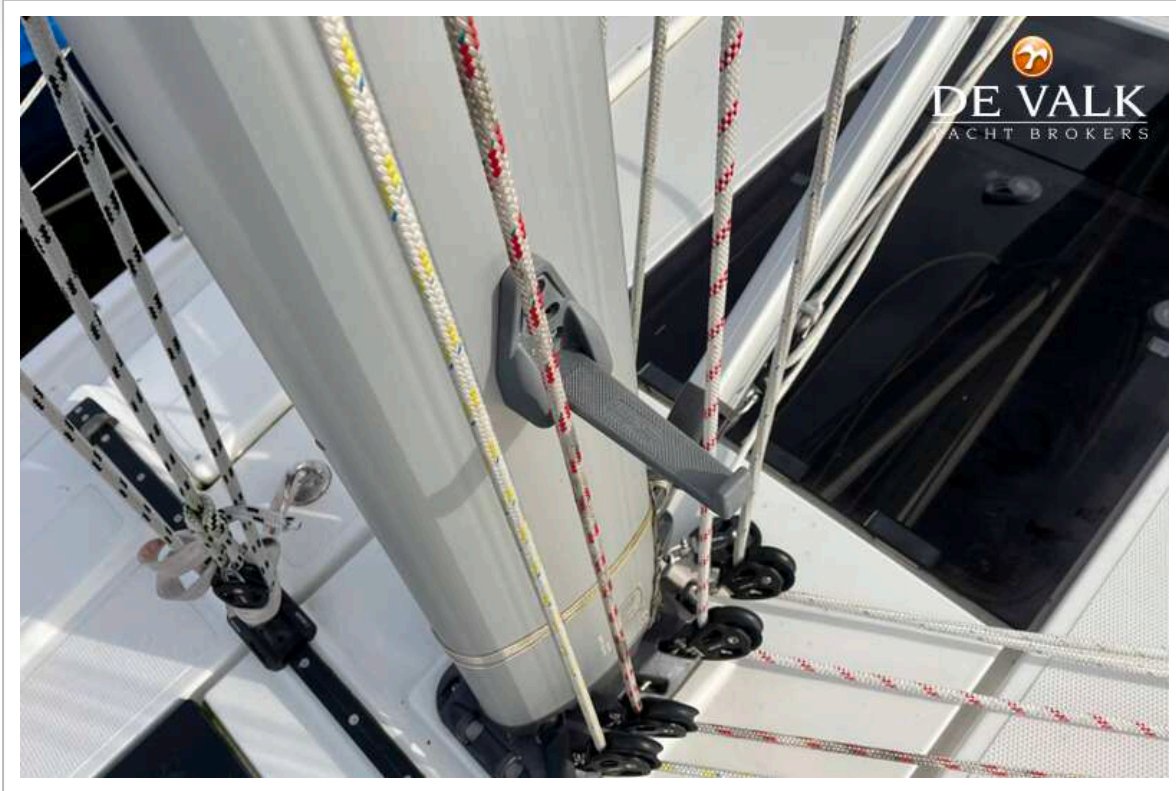


# HANSE 388



# HANSE 388







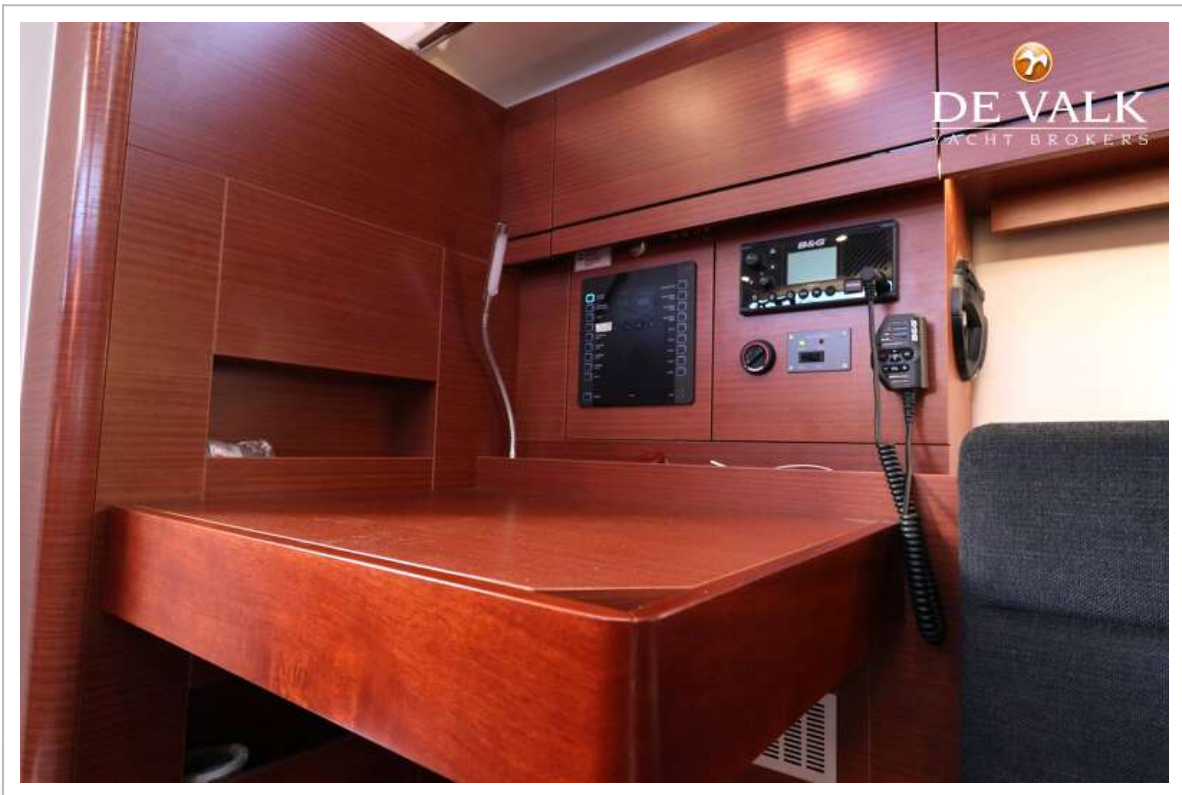
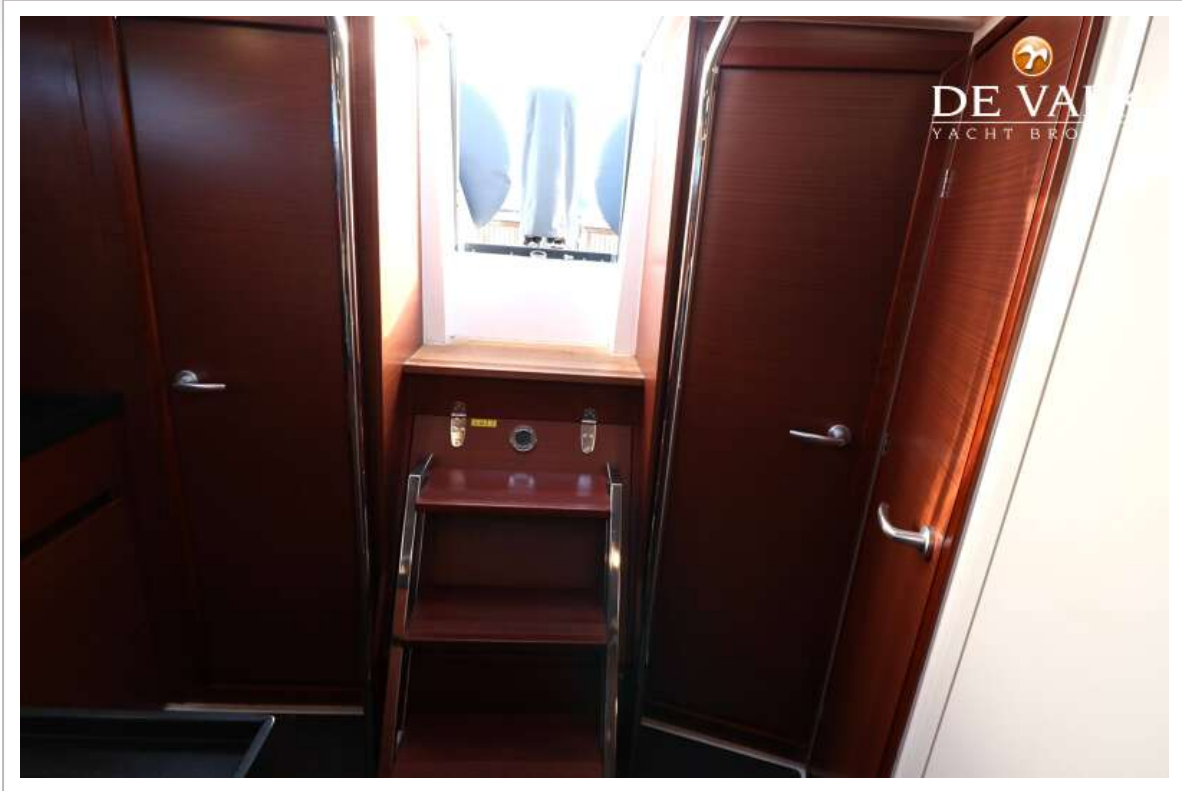
# HANSE 388



# HANSE 388

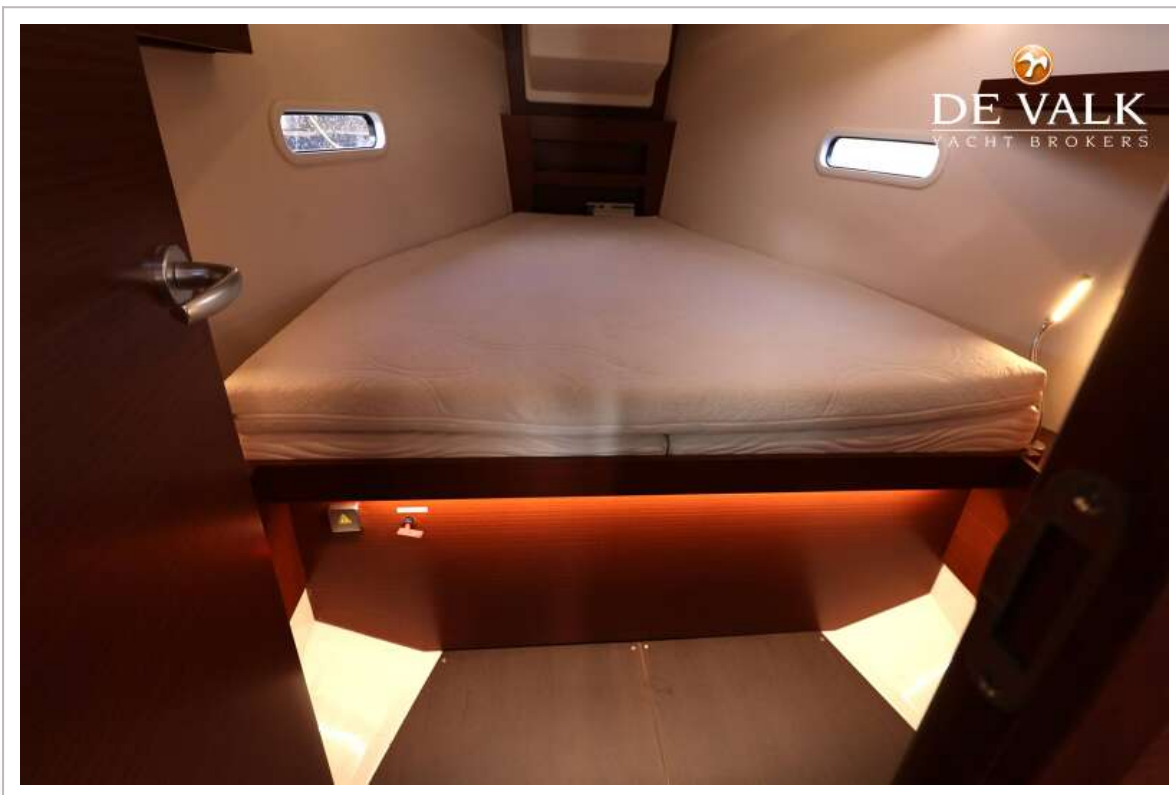


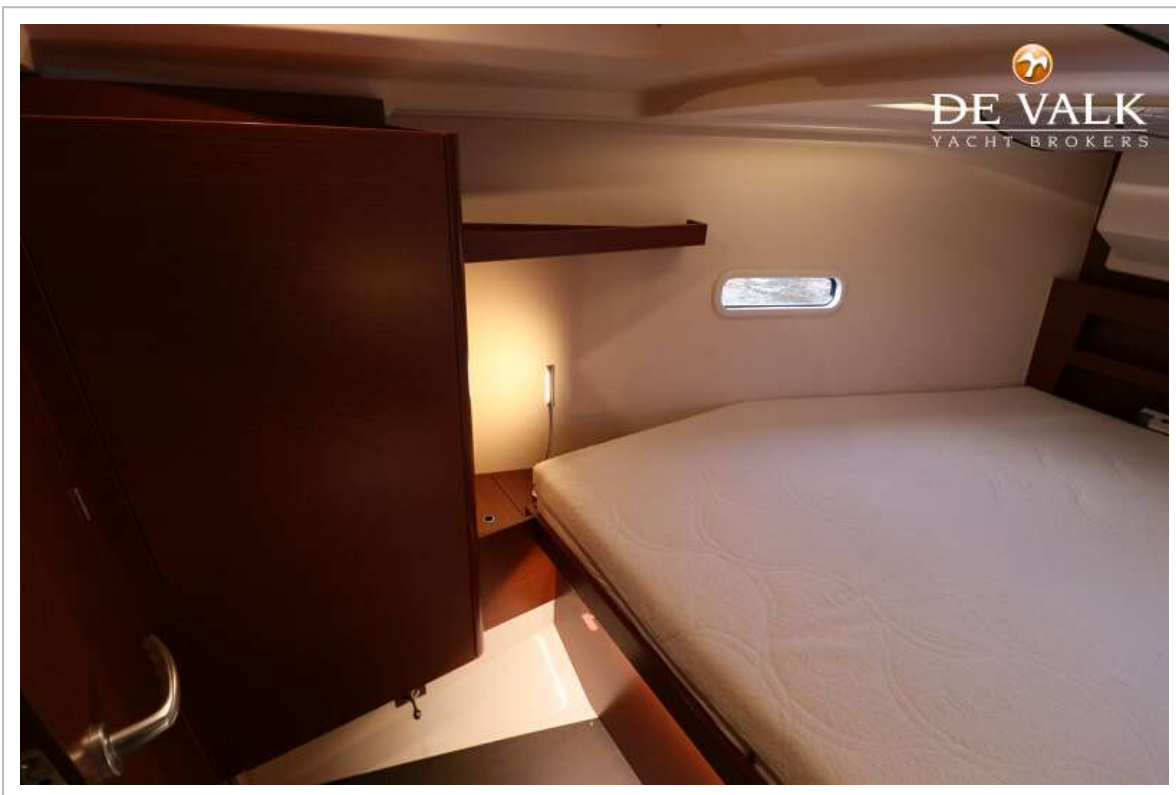
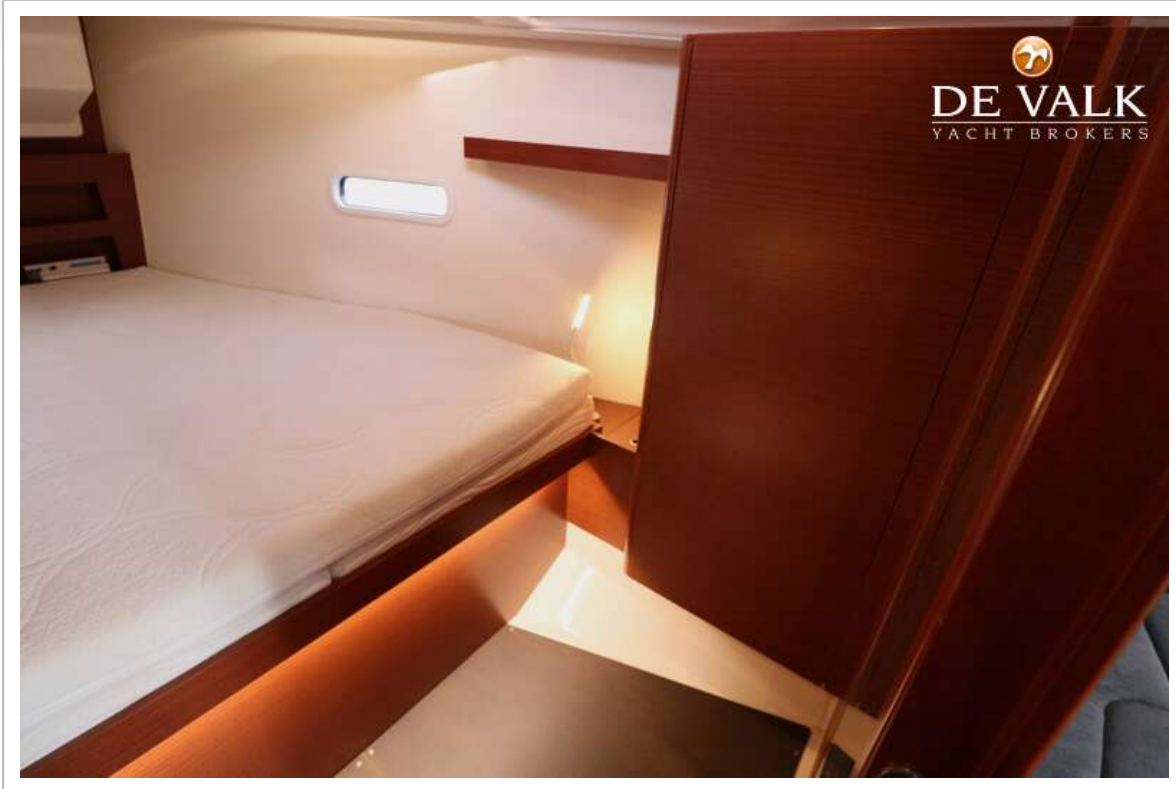
# HANSE 388



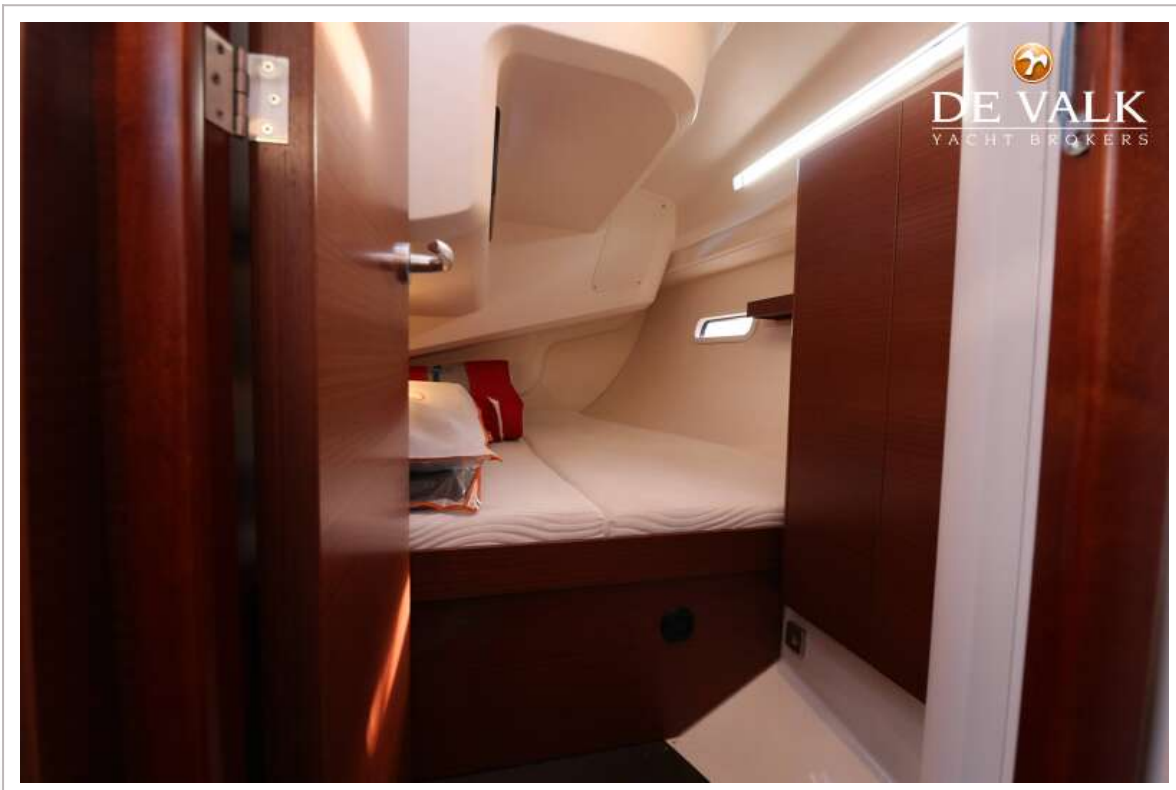
# HANSE 388







# HANSE 388



# HANSE 388

