



DE VALK
YACHT BROKERS



GRAND BANKS 46 CLASSIC



DE VALK
YACHT BROKERS

GRAND BANKS 46 CLASSIC

BROKER'S COMMENTS

This Grand Banks 46 "Mrs Bucket" is a spacious vessel with two engines, two cabins, and four berths, teak interior, air heating and airco. The fly- bridge has a beautiful seating area with a special seat for several people and a great view. A great ship for long stays on board. If you are interested, you can view them in our covered sales harbor in Sneek.

Peter Spruyt

SPECIFICATIONS

| | | | |
|---------------------|-----------------------------|----------------|------------------------------|
| Dimensions | 14.35 x 4.50 x 1.33 (m) | Builder | American Marine Ltd |
| Built | 1988 | Cabins | 2 |
| Material | GRP | Berths | 4 |
| Engine(s) | 2 x Cummins 6BTA5.9M diesel | Hp/Kw | 2 x 210.00 (hp), 154.56 (kw) |
| Asking price | € 169.000 (VAT Paid) | Lying | at sales office |

CONTACT

| | | | |
|---------------------|--------------------------------------|------------------|---------------------|
| Sales office | De Valk Sneek | Telephone | +31 (0)515 42 80 30 |
| Address | Zwolsmanweg 7 8606 KC Sneek NL | E-mail | sneek@devalk.nl |

DISCLAIMER

These particulars are given in good faith as supplied but cannot be guaranteed.



GRAND BANKS 46 CLASSIC

GENERAL

| | |
|----------------------------|---|
| Model | GRAND BANKS 46 CLASSIC |
| Type | motor yacht |
| LOA (m) | 14,35 |
| LWL (m) | 13,65 |
| Beam (m) | 4,50 |
| Draft (m) | 1,33 |
| Air draft (m) | 6,25 |
| Air draft min (m) | 3,90 |
| Headroom (m) | 2,00 |
| Year built | 1988 |
| Builder | American Marine Ltd |
| Country | Malaysia |
| Displacement (t) | 16 |
| CE norm | NA |
| Hull material | GRP |
| Hull colour | white |
| Hull shape | V-shaped hull |
| Keel type | box keel |
| Superstructure material | GRP |
| Rubbing strake | stainless steel |
| Deck material | GRP |
| Deck finish | teak Excluded from inspection due to age! |
| Superstructure deck finish | teak |
| Cockpit deck finish | teak |
| Antifouling (year) | (2025) |
| Dorades | yes |
| Window frame | wood |
| Window material | glass Gehärtetes Glas |
| Deckhatch | 3 x (2025) |
| Portholes | wood |



GRAND BANKS 46 CLASSIC

| | |
|-------------------------------------|-------------------------|
| Flybridge | yes |
| Flybridge cockpit cover | yes |
| Mast can be lowered | manual |
| Fuel tank (litre) | BB 800 Ltr/ Rvs |
| Fuel tank 2 (litre) | SB 950 Ltr/ Rvs |
| Level indicator (fuel tank) | yes |
| Freshwater tank (litre) | 600 Ltr/ Rvs |
| Level indicator (freshwater) | yes |
| Blackwater tank (litre) | 120 Ltr (not connected) |
| Level indicator (blackwater) | yes |
| Wheel steering | mechanical |
| Inside helm position | yes |
| Flybridge helm position | yes |

ACCOMMODATION

| | |
|---------------------------------|-------------------------------------|
| Cabins | 2 |
| Berths | 4 |
| Interior | teak |
| Floor | teak |
| Aft deck | yes |
| Saloon | yes |
| Headroom saloon (m) | 2,00 Mtr |
| Heating | diesel ducted hot air Webasto 5Kw |
| Air-conditioning | Dometic Turbo DTU 1600 AC/ 220 volt |
| Aft Cabin | yes |
| Opening door to cockpit | yes |
| Opening door to aft deck | yes |
| Galley | yes |
| Countertop | corian |
| Sink | stainless steel |
| Cooker | induction |



GRAND BANKS 46 CLASSIC

| | |
|------------------------------|--------------------------------------|
| Extractor | yes |
| Microwave/oven combi | yes |
| Fridge | Webasto +Koelbox Webasto |
| Freezer | Webasto |
| Hot water system | 220V + engine Quystick Boiler 60 Ltr |
| Water pressure system | electrical |
| Owners cabin | French bed |
| Bed length (m) | 2,10 Mtr |
| Wardrobe | hanging and shelves |
| Bathroom | Not working |
| Toilet | en suite |
| Toilet system | electric (2025) |
| Wash basin | at the toilet |
| Shower | Not connected |
| Guest cabin 1 | v-bed |
| Bed length (m) | 2,00 Mtr |
| Wardrobe | hanging and shelves |
| Bathroom | yes |
| Toilet | en suite |
| Toilet system | electric |
| Wash basin | at the toilet |
| Shower | en suite |

MACHINERY

| | |
|----------------------|-----------------|
| No of engines | 2 |
| Make | Cummins |
| Type | 6BTA5.9M |
| HP | 210 |
| kW | 154.56 |
| Fuel | diesel |
| Engine hours | BB 2812 SB 2800 |



GRAND BANKS 46 CLASSIC

| | |
|---------------------------------|---|
| Engine cooling system | freshwater heat exchanger |
| Drive | shaft |
| Engine controls | bowden cable |
| Gearbox | hydraulic |
| Bowthruster | electric Sidepower SE 130 |
| Propeller type | fixed |
| Propeller blades | 4 x |
| Propeller shaft material | stainless steel |
| Shaft lubrication | water |
| Electric bilge pump | yes |
| Electrical installation | 12/ 220 volt |
| Generator | wet exhaust Fiher Panda 6 Kw (2021) |
| Batteries | yes |
| Start battery | 1 x BB Motor 220 Amp |
| Service battery | 3 x Victron 200 Amp |
| Generator battery | 1 x 200 Amp |
| Bowthruster battery | 1 x 200 Amp |
| Windlass battery | 1 x 200 Amp |
| Battery charger | Mastervolt (gangway Battery) |
| Battery charger/inverter | Mastervolt Combi 12/ 3000/ 150 |
| Shorepower | yes |
| Extra info | 1 x 200 Amp Hydraulic/ Electric Gangway |

NAVIGATION

| | |
|--------------------------|-------------------------|
| Compass | Fluid compass Danfortt |
| Depth sounder | Raymarine |
| Depth sounder/log | Raymarine |
| VHF | Horizon (Not connected) |
| Autopilot | Raymarine |
| Radar/plotter | Raymarine |
| AIS receiver | 650 Class |



GRAND BANKS 46 CLASSIC

| | |
|-------------------|-----------|
| Camera | (Plotter) |
| Navigation lights | yes |
| Searchlight | yes |

EQUIPMENT

| | |
|----------------------------|----------------------|
| Fixed windscreen | yes |
| Sprayhood | yes |
| Cockpit cover | yes |
| Bimini | yes |
| Cockpit cushions | yes |
| Cockpit table | yes |
| Cockpit chairs | yes |
| Bathing platform | yes |
| Transom door | yes |
| Gangway | Hydraulic/ Electric |
| Deck shower | yes |
| Anchor | CQR Plough 15 Kg |
| Anchor chain | yes |
| Windlass | electrical |
| Deck wash | yes |
| Dinghy | Optional |
| Deck crane | manual |
| Sea railing | stainless steel Teak |
| Railing side opening gates | 3x |
| Wiper | 3x |
| Horn | electric |
| Fenders | yes |
| Mooring lines | yes |
| TV | yes |
| Clock - barometer | yes |
| Fire extinguisher | yes |





GRAND BANKS 46 CLASSIC



GRAND BANKS 46 CLASSIC



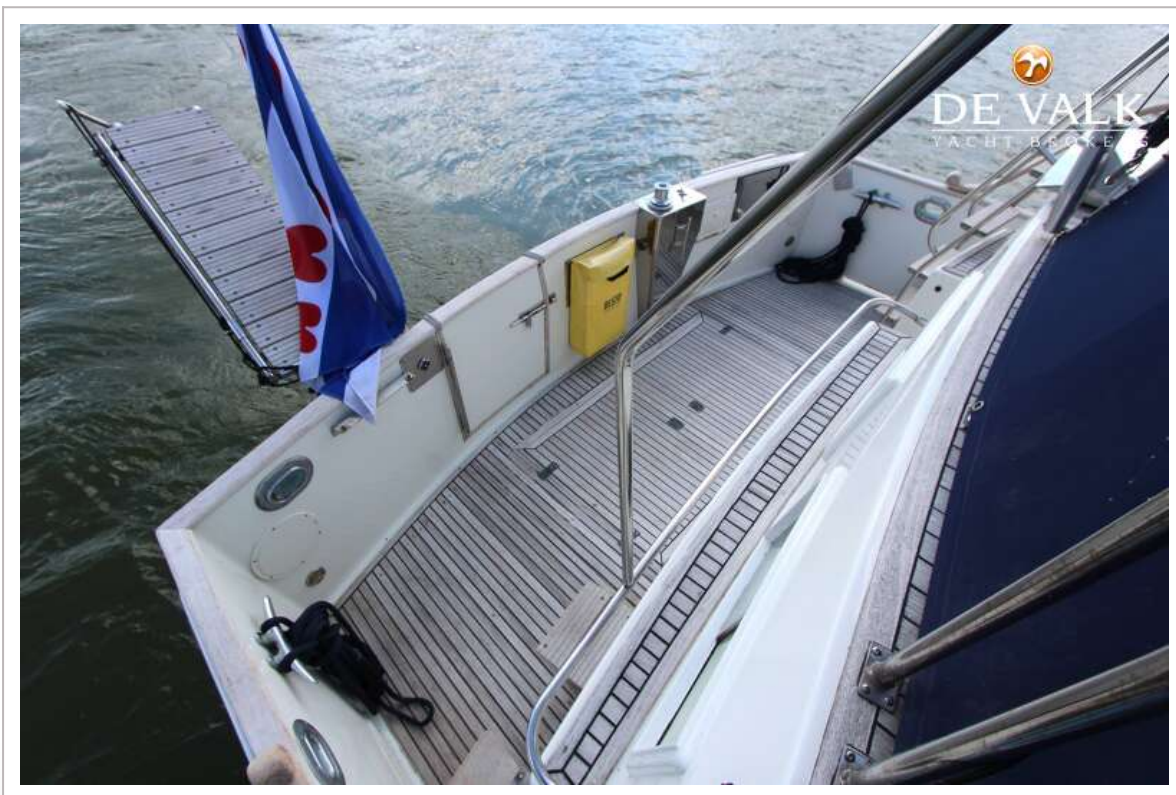
GRAND BANKS 46 CLASSIC



GRAND BANKS 46 CLASSIC



GRAND BANKS 46 CLASSIC



GRAND BANKS 46 CLASSIC



GRAND BANKS 46 CLASSIC



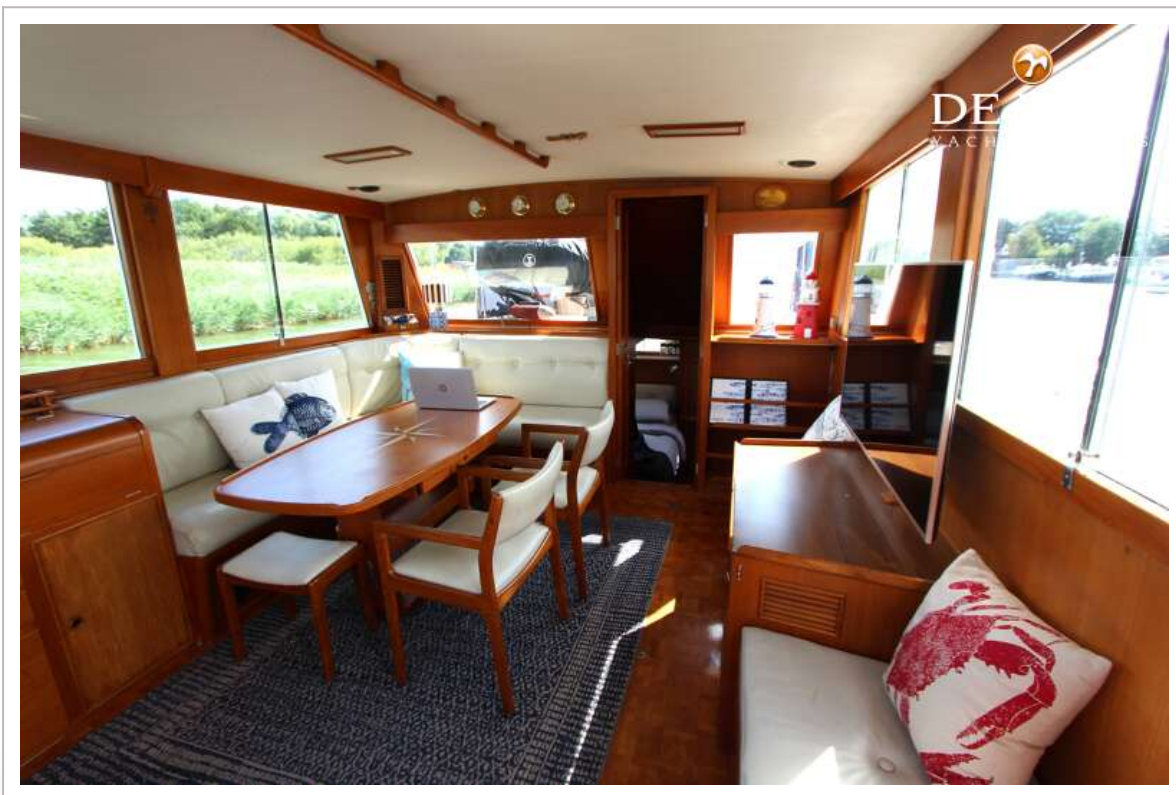
GRAND BANKS 46 CLASSIC



GRAND BANKS 46 CLASSIC



GRAND BANKS 46 CLASSIC



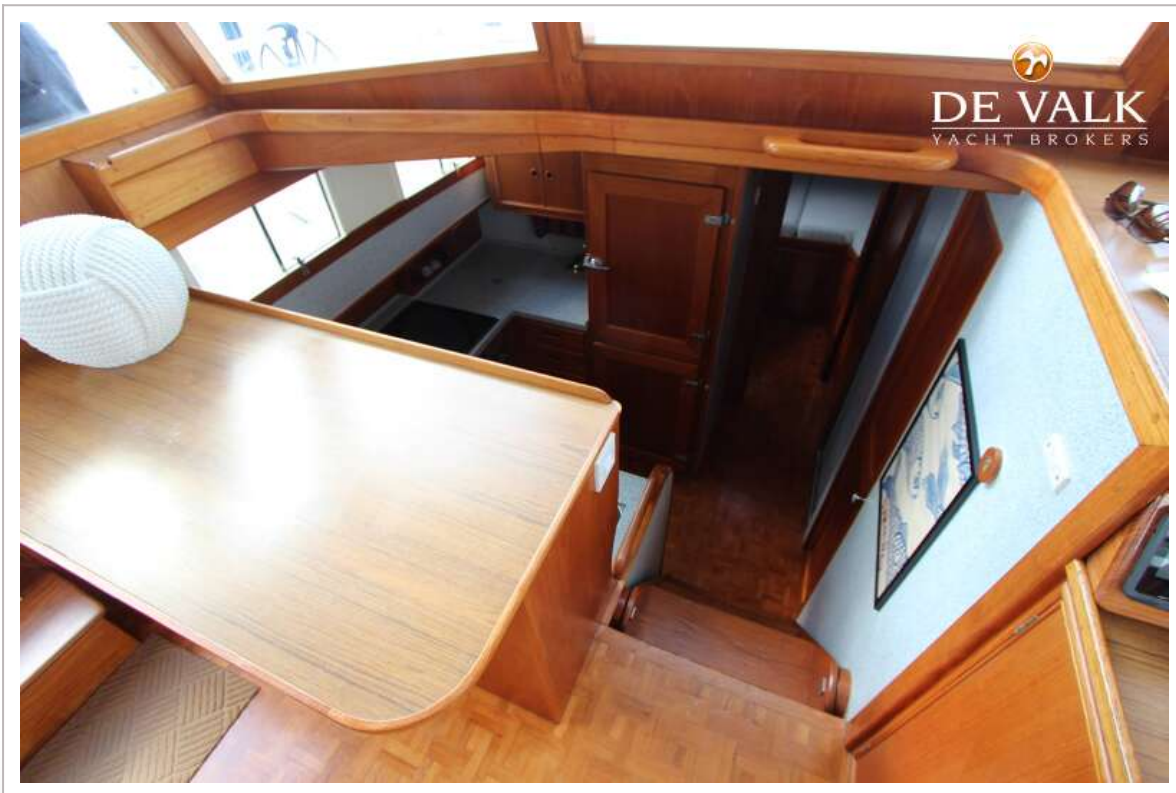
GRAND BANKS 46 CLASSIC



GRAND BANKS 46 CLASSIC



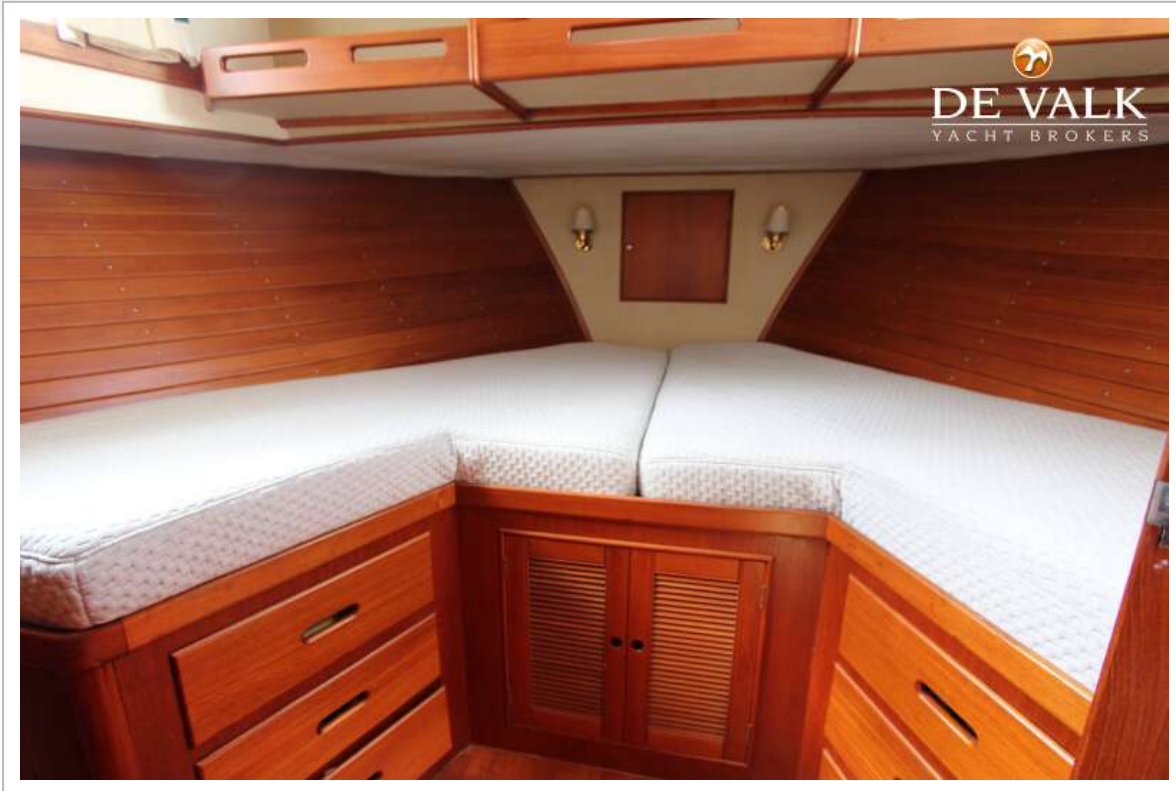
GRAND BANKS 46 CLASSIC



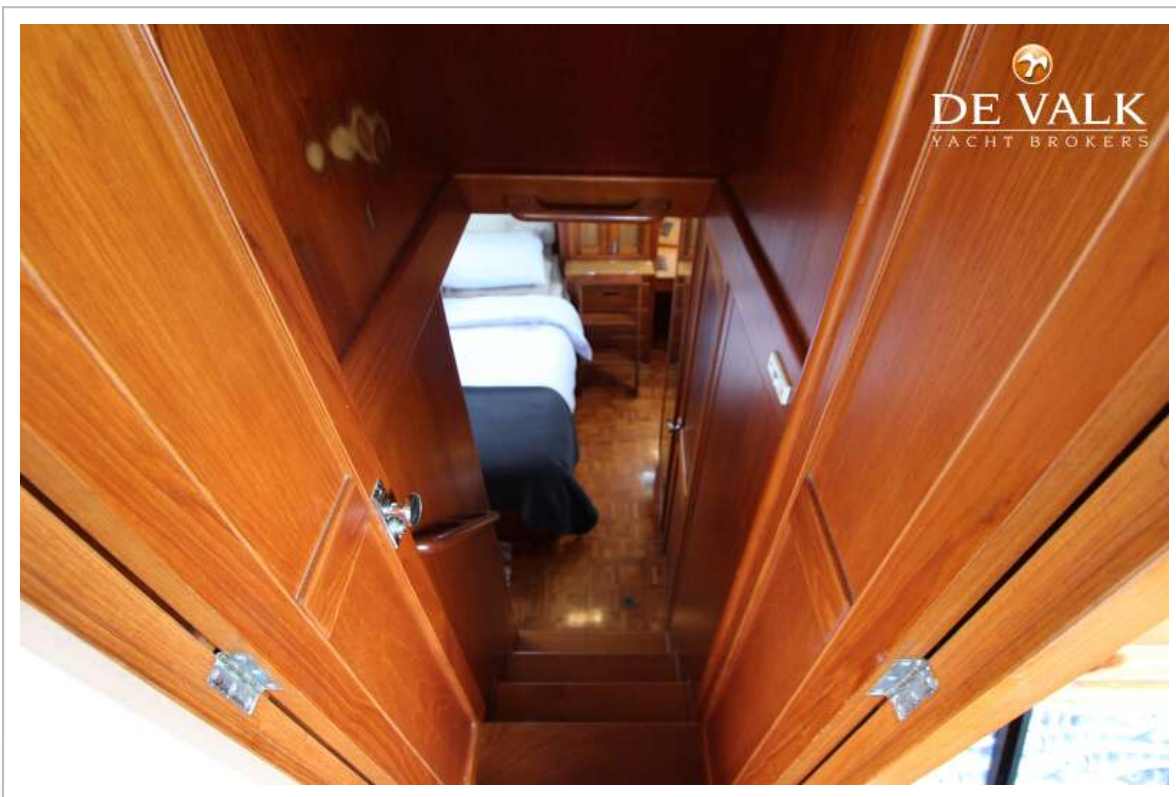
GRAND BANKS 46 CLASSIC



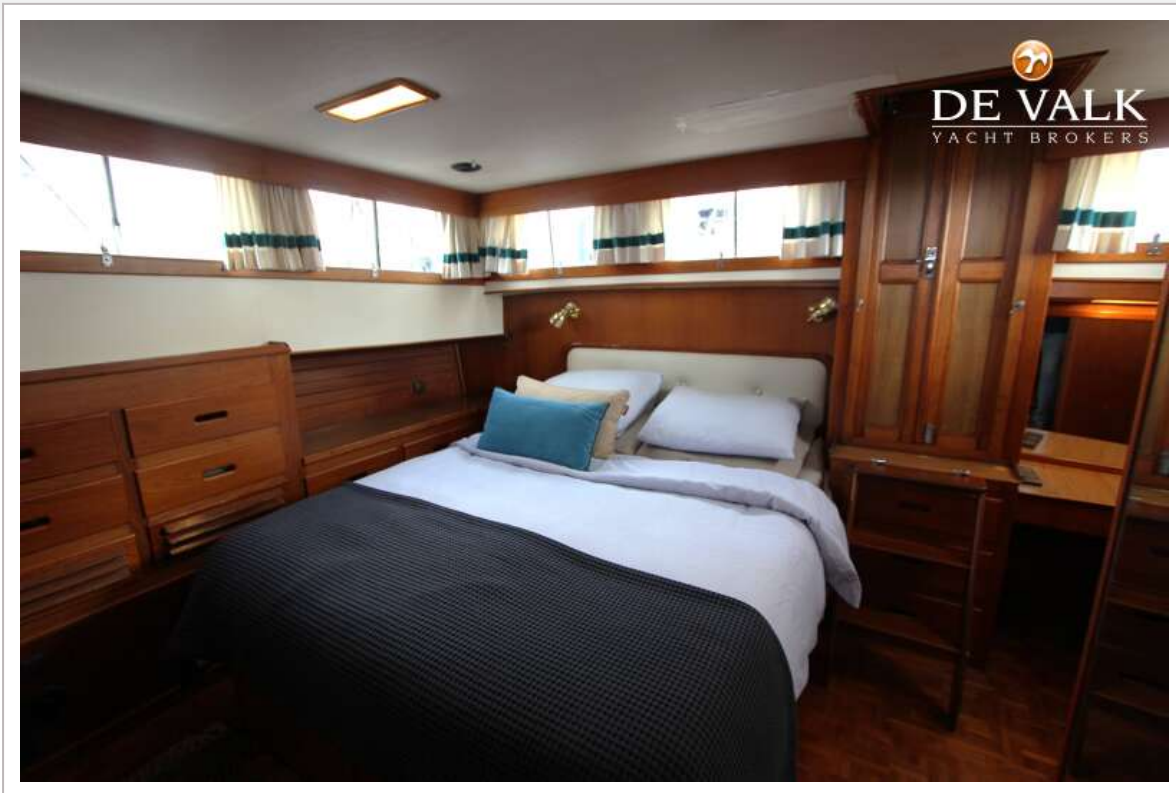
GRAND BANKS 46 CLASSIC



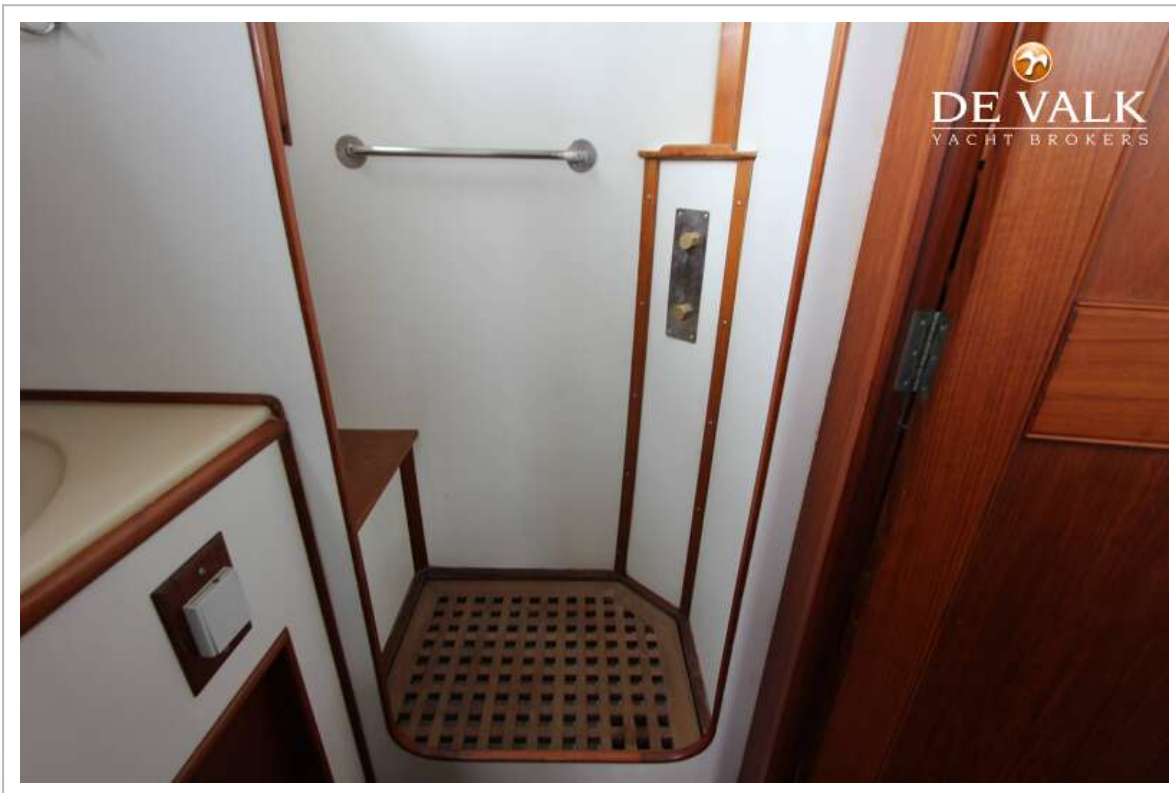
GRAND BANKS 46 CLASSIC



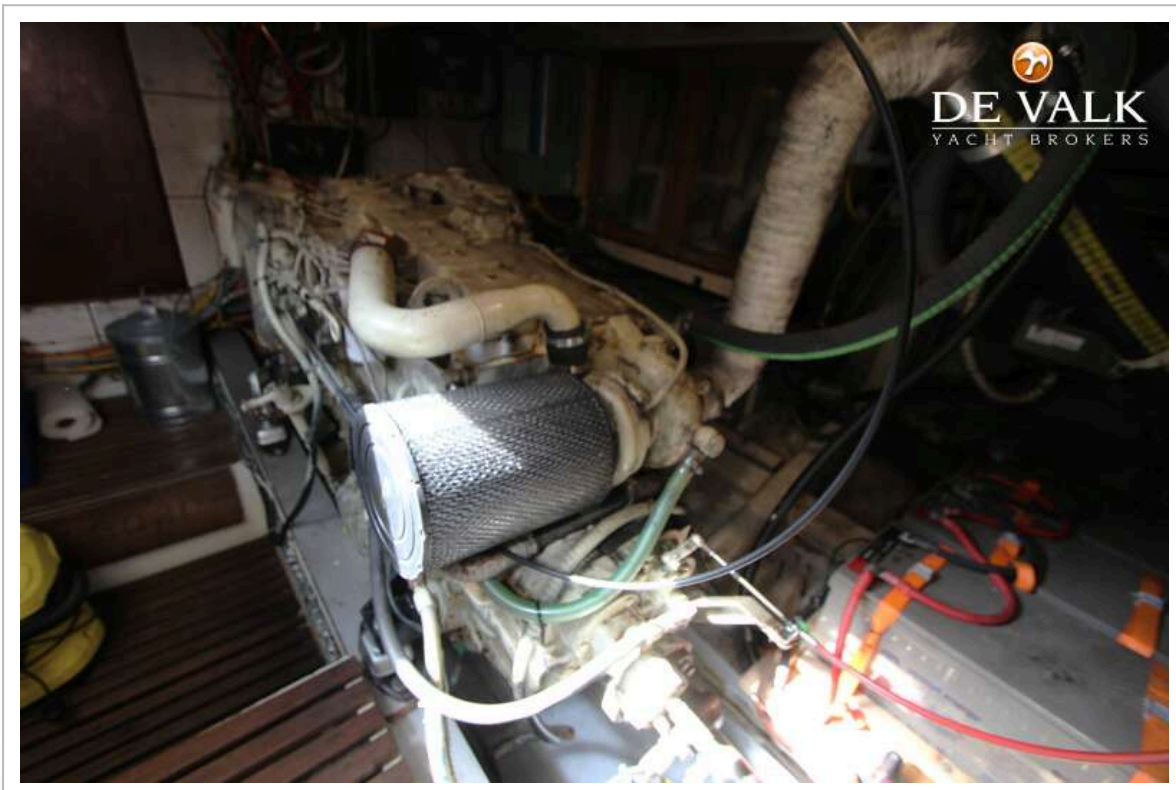
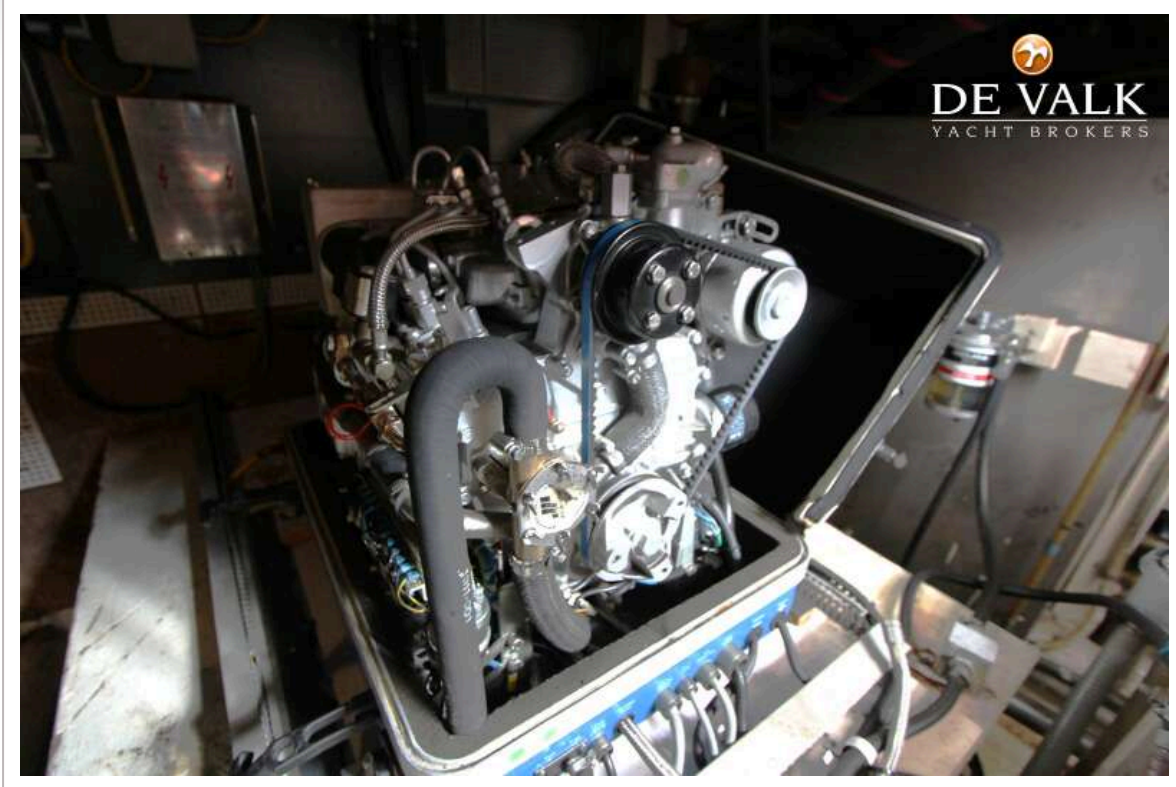
GRAND BANKS 46 CLASSIC



GRAND BANKS 46 CLASSIC



GRAND BANKS 46 CLASSIC



GRAND BANKS 46 CLASSIC

