



DE VALK
YACHT BROKERS



COLIN ARCHER 45



DE VALK
YACHT BROKERS

COLIN ARCHER 45

BROKER'S COMMENTS

Beautiful Colin Archer 45 with timeless lines and a proven seaworthy design. Built for safe and comfortable long distance cruising, she is ideal for ocean passages and extended adventures. The spacious interior provides ample living and storage space for extended stays aboard. She requires some cosmetic attention and general updating, offering an excellent opportunity for an enthusiast to make her their own. A genuine classic with character, charm, and strong cruising credentials, ready for a new owner to restore, enjoy, and sail the world's oceans.

Hans Visser

SPECIFICATIONS

Dimensions	13.70 x 4.44 x 2.25 (m)	Builder	J. van der Molen & Zonen BV - Zaandam
Built	1976	Cabins	3
Material	Steel	Berths	7
Engine(s)	1 x Mitsubishi S6S diesel	Hp/Kw	95.00 (hp), 69.92 (kw)
Asking price	€ 99.000 (VAT Paid)	Lying	contact Hindeloopen

CONTACT

Sales office	De Valk Hindeloopen B.V.	Telephone	+31 514 52 40 00
Address	Oosterstrand 1 8713 JS Hindeloopen NL	E-mail	hindeloopen@devalk.nl

DISCLAIMER

These particulars are given in good faith as supplied but cannot be guaranteed.



GENERAL

Model	COLIN ARCHER 45
Type	sailing yacht
LOA (m)	13,70
LWL (m)	11,00
Beam (m)	4,44
Draft (m)	2,25
Air draft (m)	19,50
Headroom (m)	1,90
Year built	1976
Builder	J. van der Molen & Zonen BV - Zaandam
Country	The Netherlands
Designer	Frans Cobelens
Displacement (t)	18
Ballast (tonnes)	5
CE norm	NA
Hull material	steel
Hull colour	white
Hull thickness (mm)	6 - 10 mm
Hull shape	round-bilged
Keel type	long keel
Superstructure material	steel
Superstructure (mm)	4 mm
Deck plate thickness (mm)	5 mm
Rubbing strake	steel
Deck material	steel
Deck finish	non-skid paint
Superstructure deck finish	teak
Antifouling (year)	05-2021
Dorades	two large and one small
Window frame	Bronze / brons / Bronze



Window material	double glazing And Glazing
Deckhatch	Goiot
Portholes	Bronze / brons / Bronze
Insulation	foam plates
Fuel tank (litre)	steel 1500 ltr.
Level indicator (fuel tank)	electric and dipstick
Fuel daytank (litre)	steel 120 ltr.
Level indicator (daytank)	sight glass
Freshwater tank (litre)	steel 350 ltr.
Level indicator (freshwater)	electrical
Blackwater tank (litre)	steel 80 ltr.
Level indicator (blackwater)	electrical
Blackwater tank extraction	deck extraction + uw line
Greywater tank (litre)	steel 80 ltr.
Wheel steering	hydraulic Hydraulic system leaks
Inside helm position	yes
Outside helm position	yes
Emergency tiller	yes
More info on paintwork	Professionally coated, Sikkens 2K

ACCOMMODATION

Cabins	3
Berths	7
Interior	mahogany
Floor	woodprint
Pilot house	yes
Saloon	yes
Headroom saloon (m)	1,90 mtr.
Heating	central heating Diesel Needs service
Navigation center	in pilothouse
Chart table	yes



Aft Cabin	yes
Galley	yes
Countertop	wood
Sink	stainless steel
Cooker	electric
Oven	yes
Extractor	yes
Microwave	yes
Fridge	yes
Freezer	yes
Hot water system	yes
Water pressure system	electrical
Manual and/or foot pump	yes
Owners cabin	twin single
Bed length (m)	2 mtr.
Wardrobe	hanging and shelves
Bathroom	yes
Toilet	yes
Toilet system	manual
Wash basin	yes
Shower	yes
Guest cabin 1	double bed + single bed
Bed length (m)	2 mtr.
Wardrobe	hanging and shelves
Guest cabin 2	twin single
Bed length (m)	2 mtr.
Wardrobe	hanging

MACHINERY

No of engines	1
Make	Mitsubishi



COLIN ARCHER 45

Type	S6S
HP	95
kW	69.92
Fuel	diesel
Year installed	2016
Maximum speed (kn)	8
Cruising speed (kn)	6
Engine cooling system	freshwater heat exchanger
Drive	shaft
Engine controls	bowden cable Outside motor control needs service
Gearbox	mechanical
Bowthruster	electric
Exhaust	watercooled
Thrust bearing	yes
Propeller type	fixed
Propeller blades	3
Propeller shaft material	stainless steel
Shaft lubrication	grease
Manual bilge pump	yes
Electric bilge pump	yes
Bilge alarm	yes
Electrical installation	12 / 220 volt
Generator	Needs service
Start battery	lead-acid batteries
Service battery	Lithium-ion batteries
Generator battery	Lead-acid battery
Battery monitor	BMS
Battery charger	Mastervolt
Inverter	Mastervolt
Diode battery combiners	yes
Shorepower	with cable
Insulation transformer	yes



NAVIGATION

Compass	yes
Depth sounder	yes
Log	yes
Windset	yes
Repeater	yes
VHF	yes
VHF handheld	yes
Autopilot	yes
Rudder angle indicator	yes
Radar	B&G
Plotter	2x B&G
Radar/GPS	B&G
Navtex	yes
Electronic chart(s)	yes
AIS transceiver	yes
Radio receiver	yes
EPIRB	yes
Navigation lights	yes
Searchlight	yes

EQUIPMENT

Fixed windscreen	yes
Sun awning	yes
Boarding ladder	steel on the rudder / op roer / am Ruder
Anchor	CQR Plough
Anchor chain	110 mtr.
Anchor 2	Rock anchor / Rotsanker / Felsanker 60 kg
Windlass	mechanical
Davits	steel
Davits controls	manual



Sea railing	wire
Grab rail (superstructure)	teak
Railing side opening gates	yes
Pulpit	yes
Lifejackets	6 adults
Safety harness	yes
Lifebuoy	yes
Danbuoy	yes
Safety lines on deck	yes
Wiper	yes
Radar reflector	yes
Fenders	yes
Mooring lines	yes
Spare parts	yes
Tools	yes
Radio-cd player	yes
Speakers in salon	yes
Speakers in cabin	yes
Fire extinguisher	3x
Latest extinguisher survey	approx. 2022
Auto extinguisher system	in the engine room

RIGGING

Rigging	ketch-cutter
Standing rigging	wire
Brand mast	Fa. Duivendak, zeeland Mast requires maintenance
Material mast	wood
Spreaders	One pair
Mainsail	yes
Mainsail cover	yes
Topsail	gaff topsail



Mizzen	yes
Mizzen sailcover	yes
Jib	Jib on boom
Jib I	Furling jib
Jib II	multiple sails on the third stay
Reefing System	Reef points / Reefknuttels / Reffbändsel
Boomvang	tackle
Primary sheet winch	on the pilothouse
Secondary sheet winch	on deck next to the wheelhouse
Halyard winches	yes
Extra info	standing rigging up to the spreaders of the main mast
Extra info	Bowsprit requires maintenance



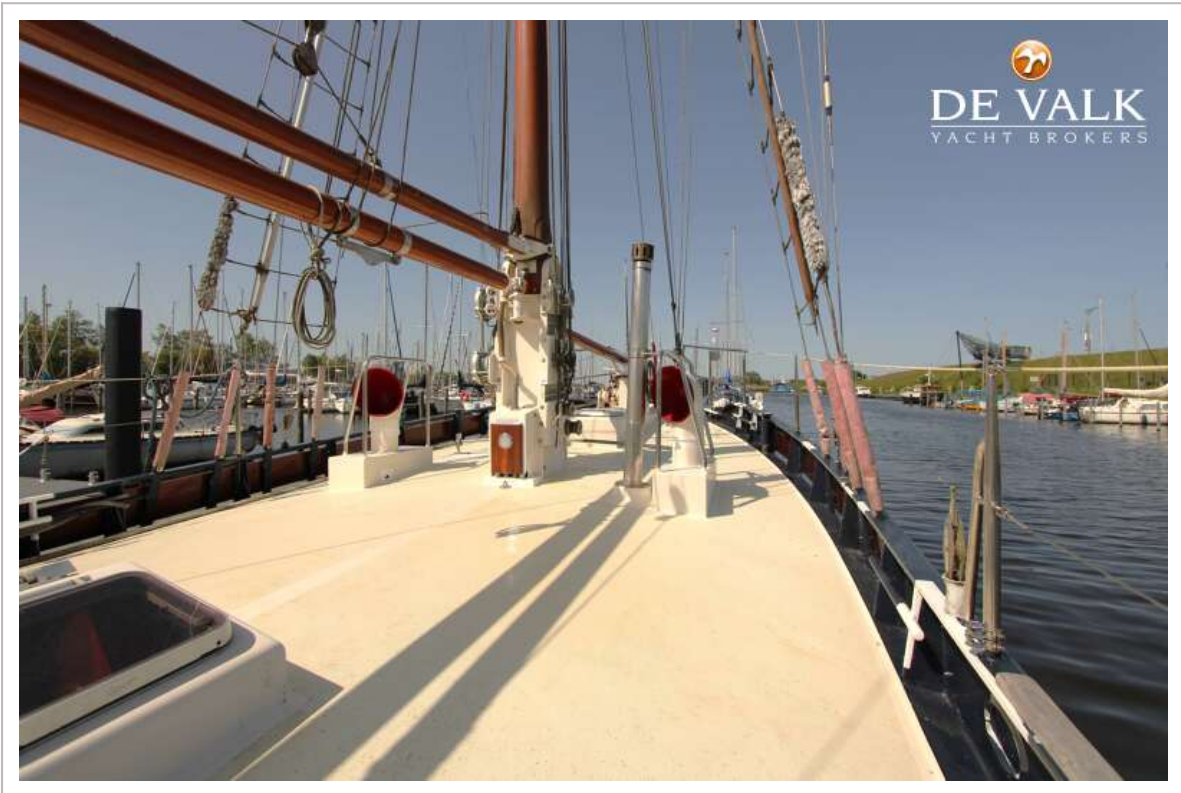
COLIN ARCHER 45



COLIN ARCHER 45



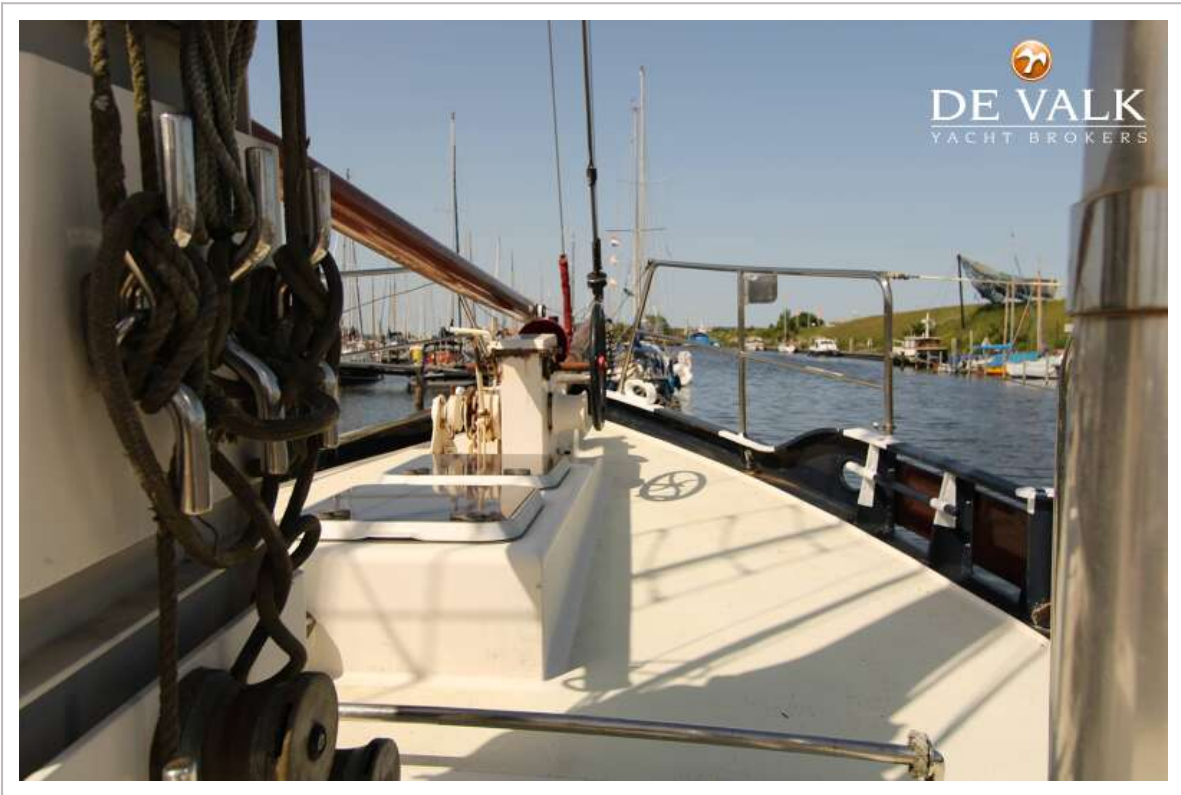
COLIN ARCHER 45



COLIN ARCHER 45

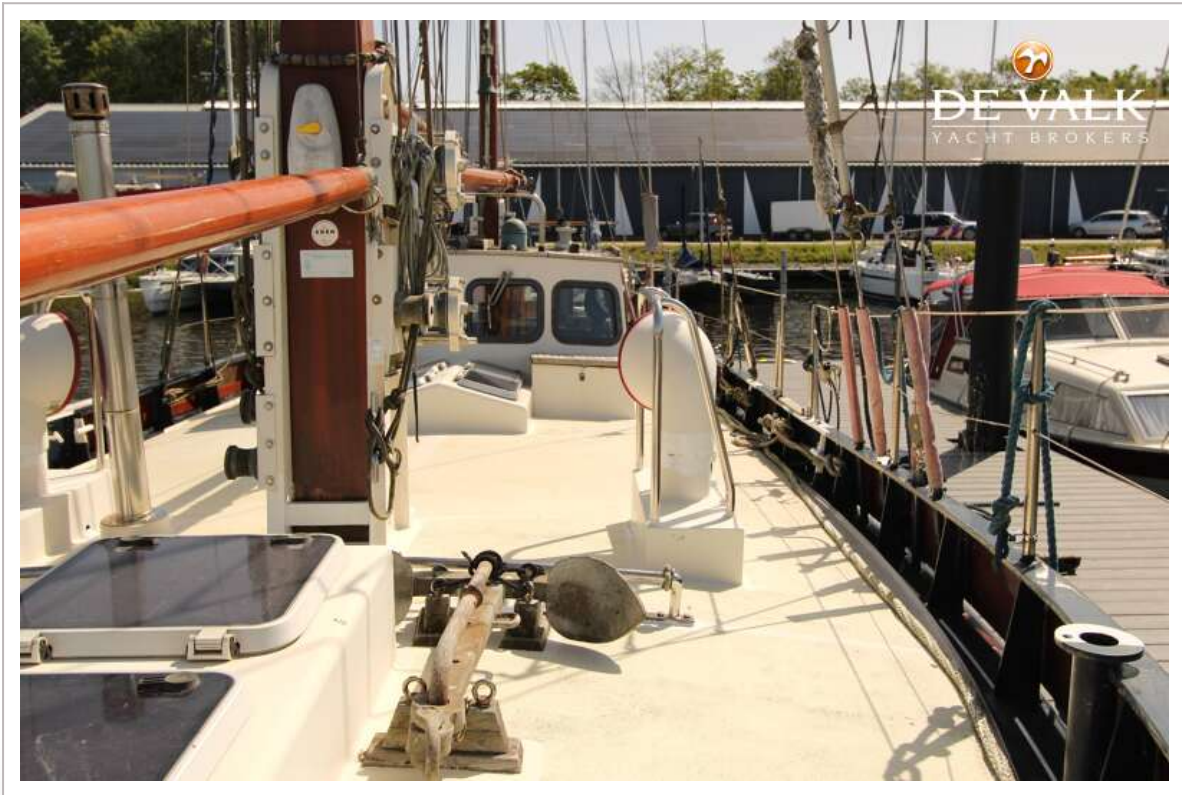
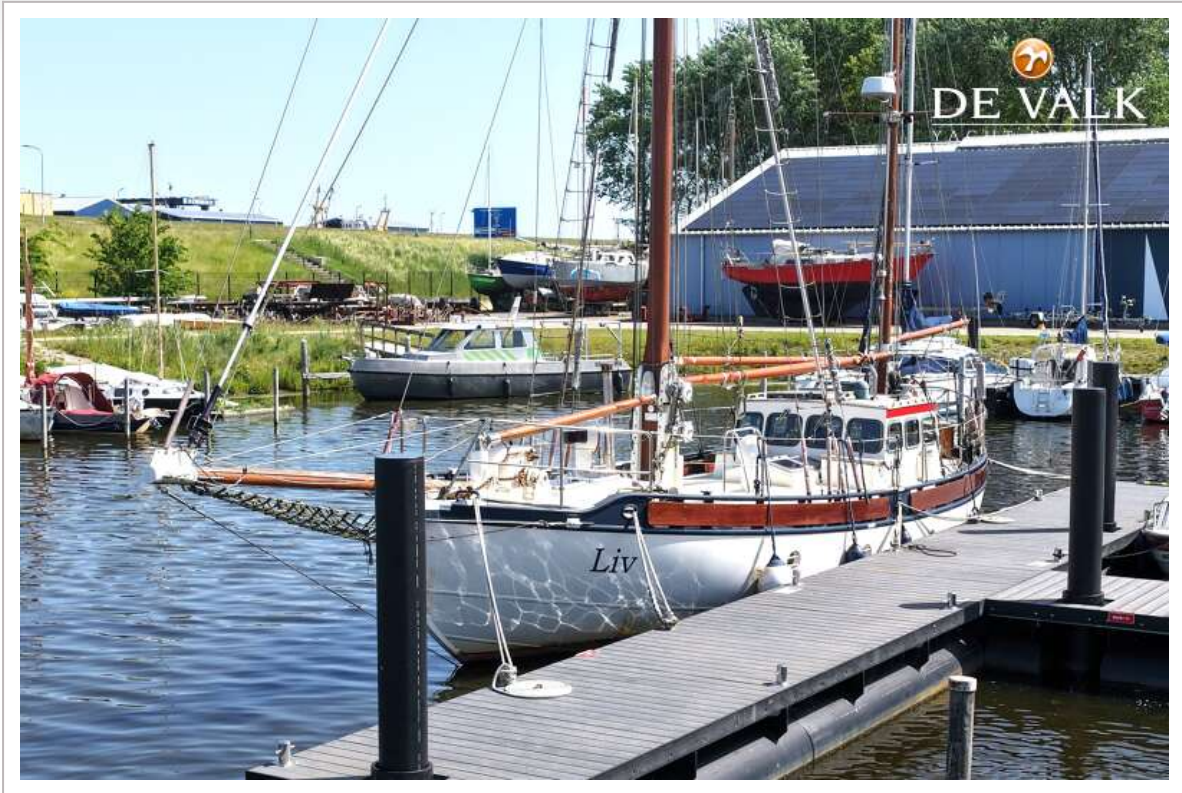


COLIN ARCHER 45



COLIN ARCHER 45



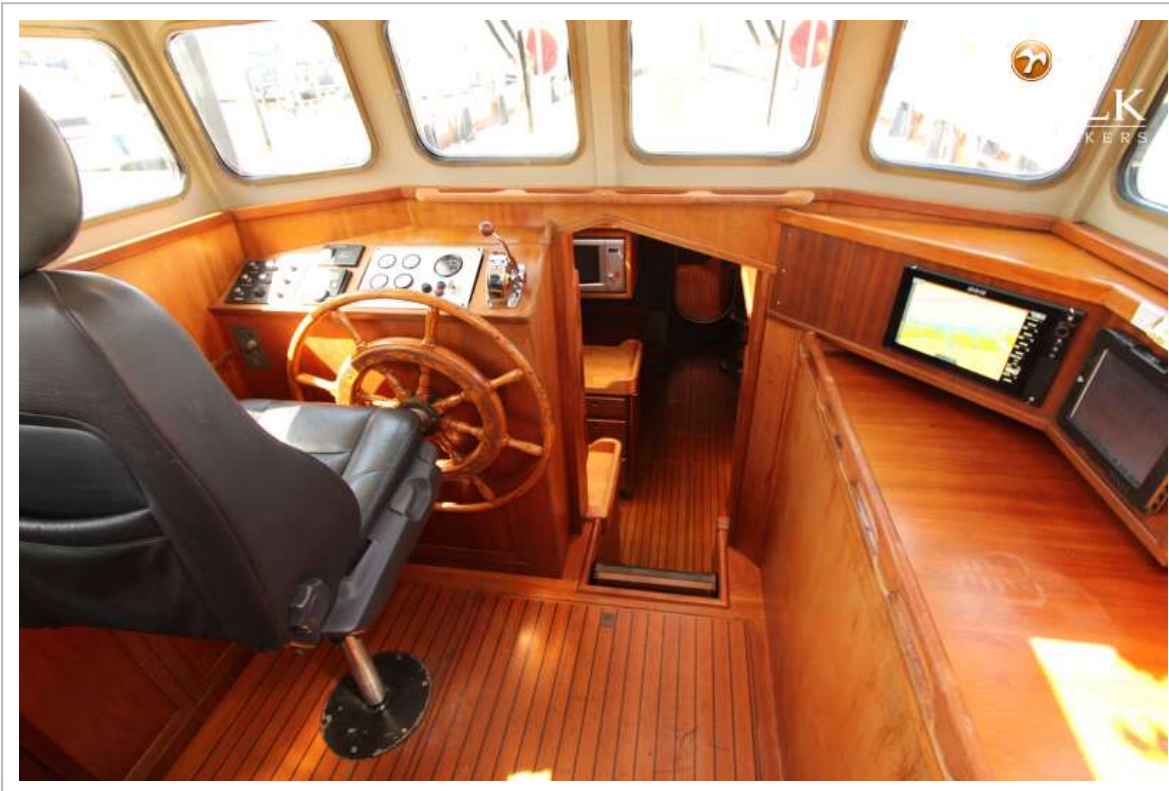


COLIN ARCHER 45





COLIN ARCHER 45



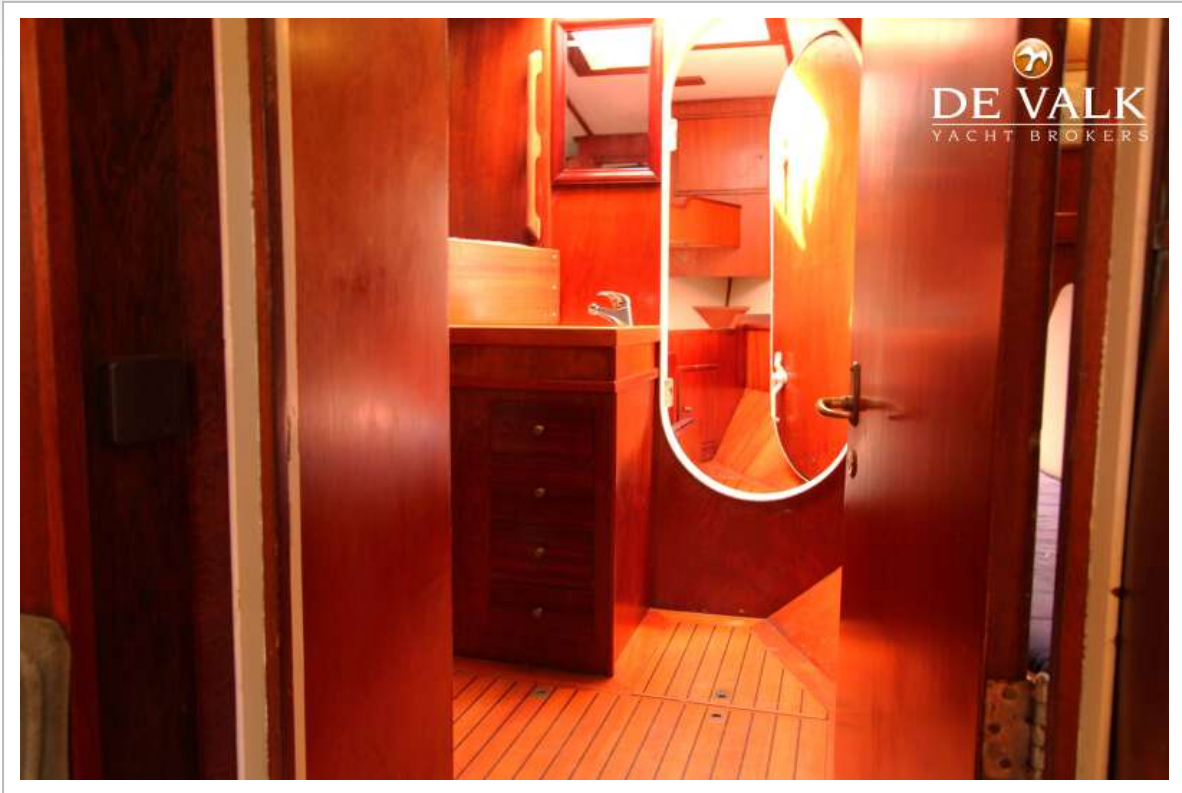
COLIN ARCHER 45



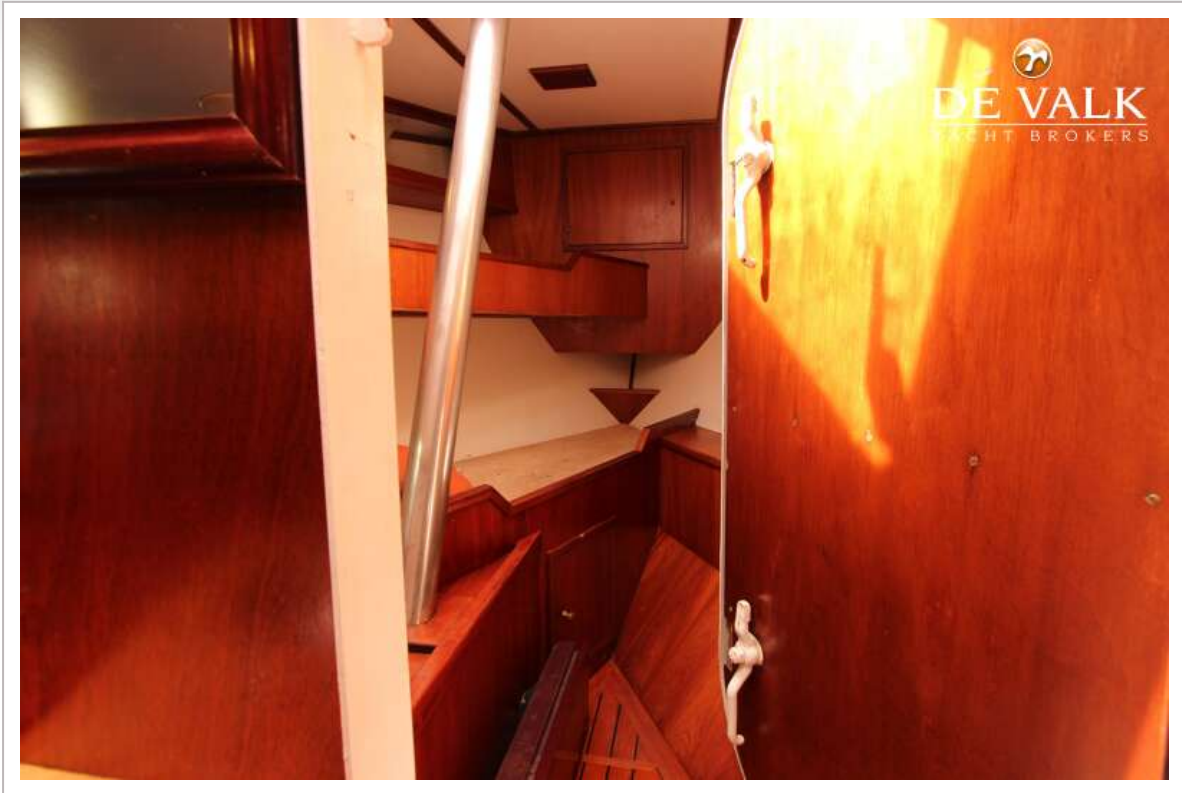
COLIN ARCHER 45



COLIN ARCHER 45



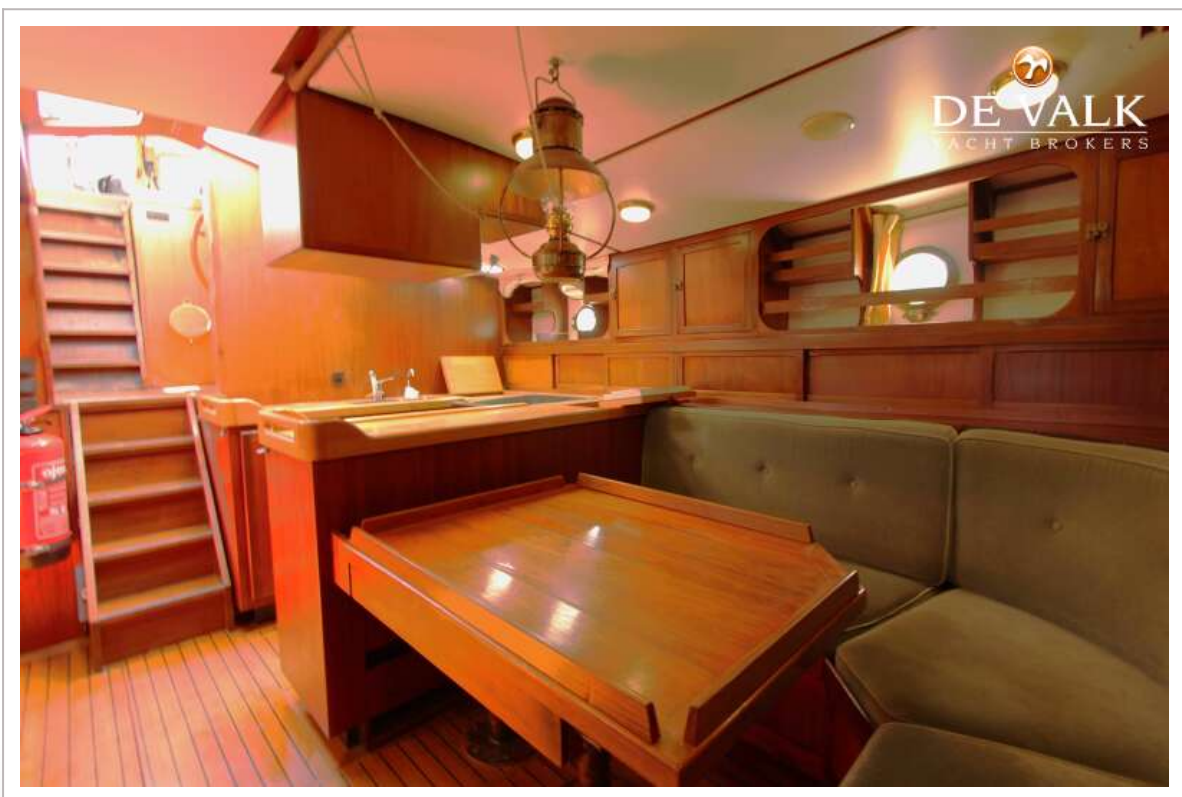
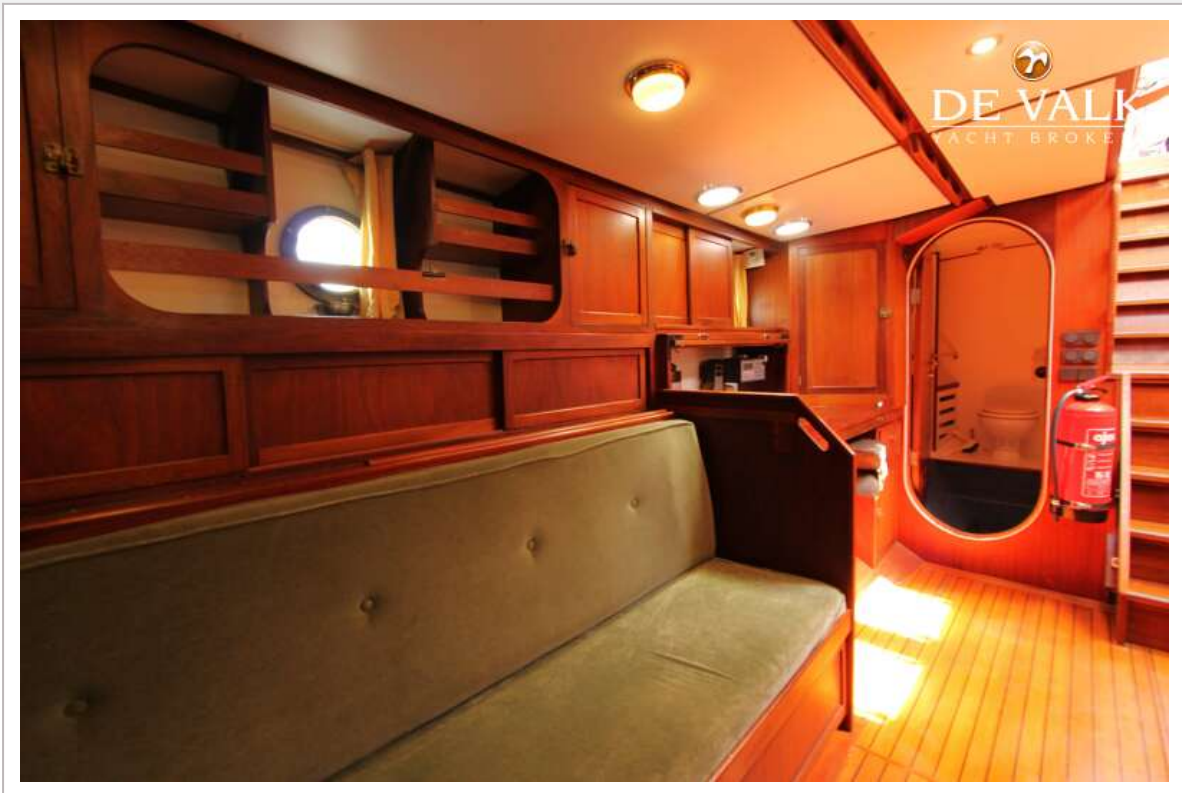
COLIN ARCHER 45



COLIN ARCHER 45



COLIN ARCHER 45



COLIN ARCHER 45



COLIN ARCHER 45



COLIN ARCHER 45

