



DE VALK
YACHT BROKERS



BEKEBREDE ONE OFF



DE VALK
YACHT BROKERS

BROKER'S COMMENTS

FREYA NJORD is a beautiful, newly built and extremely strong offshore sailing vessel with a shallow draught and a canting keel, designed by Martin Bekebrede and launched in 2008. She is built to very high standards and is suitable for long distance cruising, commercial charter or as a comfortable live-aboard that can be sailed anywhere. With her hydraulically operated ketch rig, swing keel and long range fuel capacity, she can easily be sailed with a small crew. You can go anywhere you want to explore and anchor in cosy bays and lead an autonomous life for very long periods of time, in places.

Hartmut Ross

SPECIFICATIONS

Dimensions	25.95 x 5.02 x 1,35 / 3.00 (m)	Builder	SRF
Built	2008	Cabins	5
Material	Steel	Berths	8
Engine(s)	1 x Doosan MD 136TI diesel	Hp/Kw	232.00 (hp), 170.75 (kw)
Asking price	€ 479.000 (VAT Paid)	Lying	contact Kiel

CONTACT

Sales office	De Valk Kiel	Telephone	+49 1712312133
Address	Hermann Rennerstrasse 12 22609 Hamburg DE	E-mail	kiel@devalk.nl

DISCLAIMER

These particulars are given in good faith as supplied but cannot be guaranteed.



BEKEBREDE ONE OFF

GENERAL

Model	BEKEBREDE ONE OFF
Type	sailing yacht
LOA (m)	25,95
Beam (m)	5,02
Draft (m)	3,00
Draft min (m)	1,35
Air draft (m)	21,80
Headroom (m)	2,05
Year built	2008
Launched	2009
Builder	SRF
Country	The Netherlands
Designer	Martin Bekebrede
Displacement (t)	85
CE norm	A
Hull material	steel
Hull colour	black
Hull thickness (mm)	10
Keel type	swing keel
Superstructure material	steel
Superstructure (mm)	6
Deck plate thickness (mm)	6
Rubbing strake	steel
Deck material	steel
Deck finish	non-skid paint
Superstructure deck finish	non-skid paint
Cockpit deck finish	non-skid paint
Antifouling (year)	2024
Window frame	wood
Window material	double glazing



BEKEBREDE ONE OFF

Deckhatch	yes
Portholes	brass
Insulation	glasswool 100 mm
Fuel tank (litre)	steel 3800
Fuel tank 2 (litre)	steel 3800
Level indicator (fuel tank)	yes
Fuel daytank (litre)	steel 200
Level indicator (daytank)	yes
Freshwater tank (litre)	steel 2 x 5000
Level indicator (freshwater)	yes
Blackwater tank (litre)	steel 2000
Level indicator (blackwater)	yes
Greywater tank (litre)	2000
Level indicator (greywater)	yes
Wheel steering	hydraulic
Outside helm position	yes
Emergency tiller	yes

ACCOMMODATION

Cabins	5
Berths	8
Interior	teak
Floor	wood
Open cockpit	yes
Pilot house/deck saloon	yes
Saloon	yes
Headroom saloon (m)	2,05
Heating	Central water, Kabola B25 29kW
Air-conditioning	Single cycle Airco
Navigation center	yes
Chart table	yes



BEKEBREDE ONE OFF

Dining room	yes
Opening door to cockpit	yes
Galley	yes
Countertop	Norwegian granite
Sink	stainless steel
Cooker	Siemens Induction
Oven	Siemens Toplevel
Microwave	Siemens
Fridge	2 x Miele
Freezer	Siemens
Hot water system	Electric, Kabola and engine
Water pressure system	Danfoss
Dishwasher	Siemens
Coffee maker	Siemens EQ-500
Owners cabin	French bed
Bed length (m)	2,10 x 1,80
Wardrobe	hanging/drawers/shelves
Bathroom	separate
Toilet	en suite
Toilet system	electric
Wash basin	in the bathroom
Guest cabin 1	double bed
Bed length (m)	2,05 x 1,80
Wardrobe	hanging/drawers/shelves
Bathroom	separate
Toilet	en suite
Toilet system	electric
Wash basin	in the bathroom
Shower	en suite
Guest cabin 2	single bed
Bed length (m)	2,10 X 0,80
Wardrobe	hanging/drawers/shelves



BEKEBREDE ONE OFF

Guest cabin 3	single bed
Bed length (m)	2,10 X 0,80
Wardrobe	hanging/drawers/shelves

MACHINERY

No of engines	1
Make	Doosan MD
Type	136TI
HP	232
kW	170.75
Fuel	diesel
Year installed	2008
Year of overhaul	Regularly serviced
Maximum speed (kn)	11
Cruising speed (kn)	7,5
Engine hours	1330
Engine cooling system	hopper cooling
Drive	shaft
Engine controls	bowden cable
Gearbox	hydraulic
Bowthruster	hydraulic Vetus 80 HP
Exhaust	yes
Propeller type	fixed
Propeller blades	4
Electric bilge pump	4 x electric with sensors
Bilge alarm	yes
Generator	25 Kw 400/230V + Hydraulic pump
Running hours generator	1300
Batteries	380/230/24/12V
Start battery	yes
Service battery	12 x 2v cells: 24 v bank



Battery charger/inverter	2x Victron Phoenix Multiplus 24/3000/70
Shorepower	with cable 380V / 230V

NAVIGATION

Compass	yes
Compass on flybridge	yes
Electric compass	yes
Multi control display	Raymarine i70
Depth sounder/log	Raymarine
VHF	SIMRAD in pilot house and steering position
Autopilot	Raymarine ST8000
Radar	Furuno digita
Plotter/GPS	yes
Wifi antenna	yes
AIS receiver	Em-track A200, Class A
Navigation lights	yes
Extra info	All navigation information is also available on wifi

EQUIPMENT

Cockpit cover	yes
Dodger	yes
Sun awning	yes
Cockpit cushions	yes
Cockpit table	yes
Cockpit chairs	yes
Boarding ladder	yes
Bow ladder	yes
Gangway	yes
Deck shower	yes
Anchor	2 x 180 kg d'Hone STS
Windlass	Hydraulic De Rek en Horsman



BEKEBREDE ONE OFF

Dinghy	New RIB boat with steering position
Outboard	New 20 HP Suzuki
Davits	2 heavy-duty steel electric + manual winches
Sea railing	yes
Grab rail (superstructure)	yes
Railing side opening gates	yes
Life raft	New 2020
Life raft (pers)	6
Safety harness	yes
Lifebuoy	yes
Horn	yes
Fenders	yes
Mooring lines	yes
Spare parts	yes
Tools	yes
TV	4 Deckhouse, Saloon, TV saloon and owners' cabin
Satellite	Internet
Speakers in salon	yes
Clock - barometer	yes
Fire extinguisher	Throughout ship, some needs service
Extra info	Fire alarm system throughout the ship

RIGGING

Rigging	ketch
Standing rigging	wire
Brand mast	2 steel masts, gaff rig, manual and hydraulic winches
Material mast	Steel
Mainsail	De Boer, commenced 2020
Mainsail cover	yes
Mizzen	De Boer, commenced 2020
Mizzen sailcover	yes



Jib

Furling, De Boer, commenced 2020

Primary sheet winch

2 x manual Meisner

Halyard winches

2 x hydraulic and manual Strikwerda

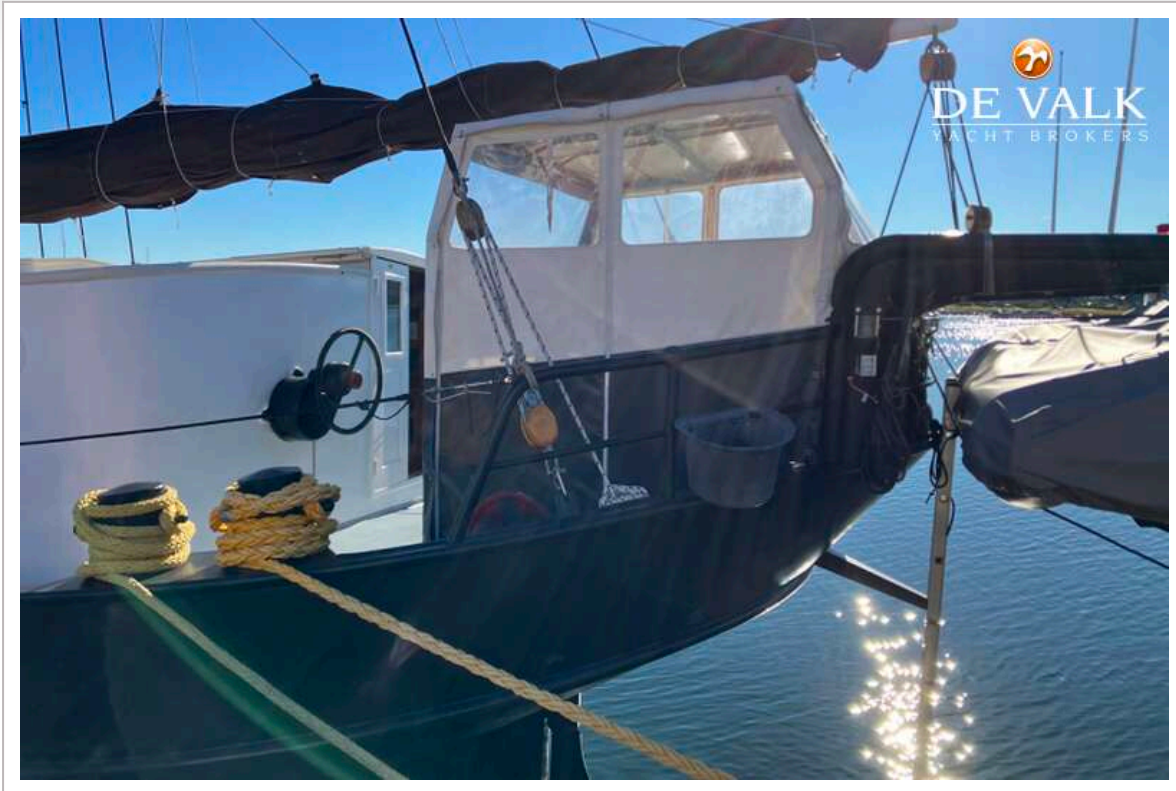


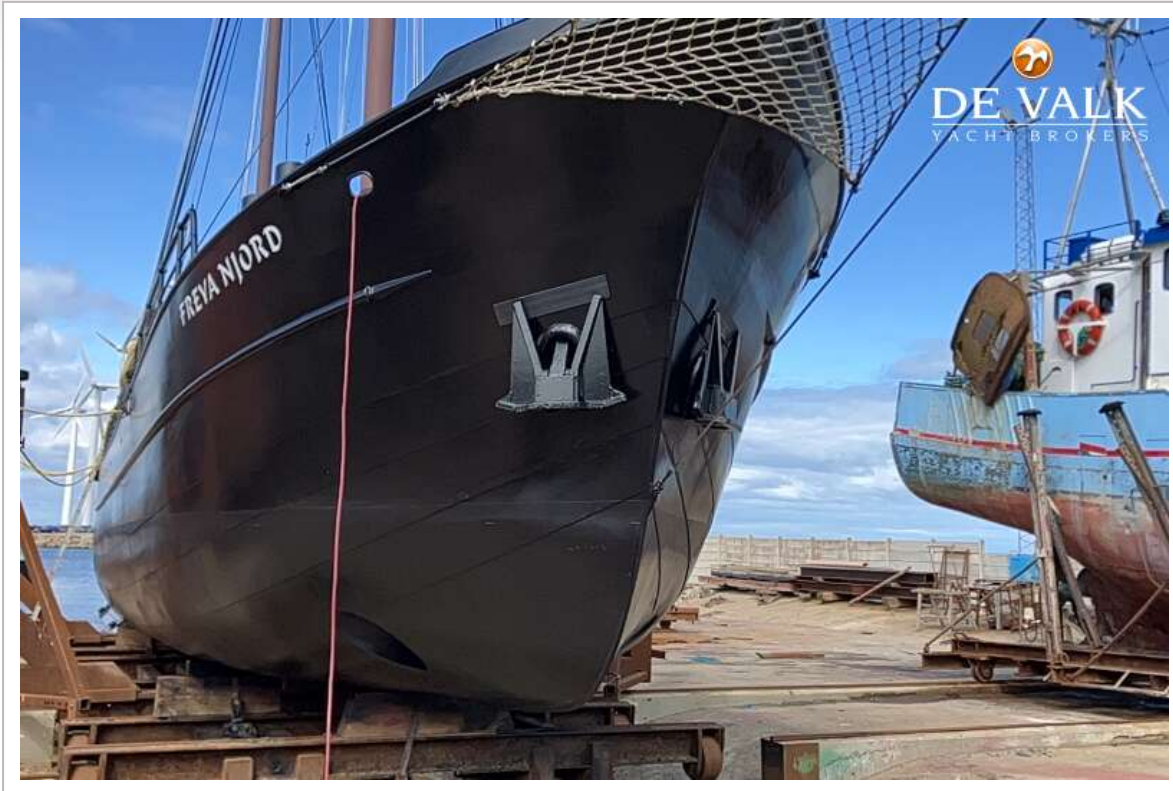
BEKEBREDE ONE OFF



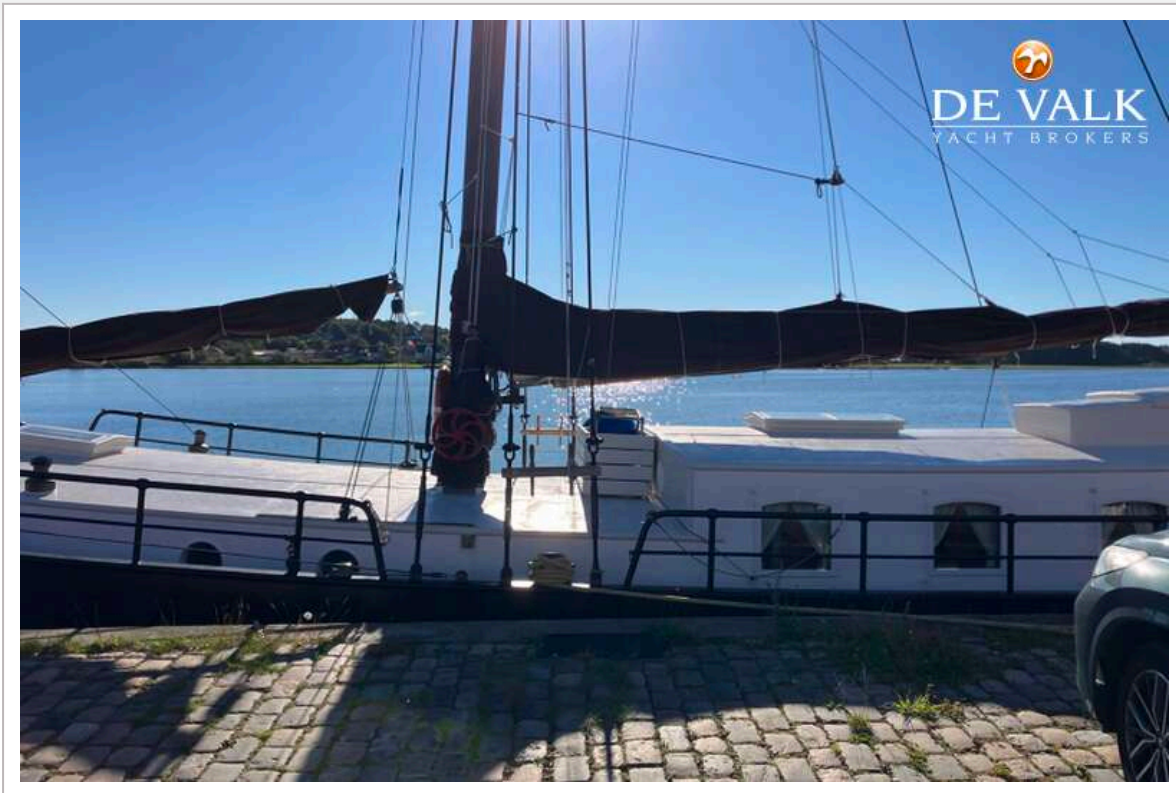


BEKEBREDE ONE OFF

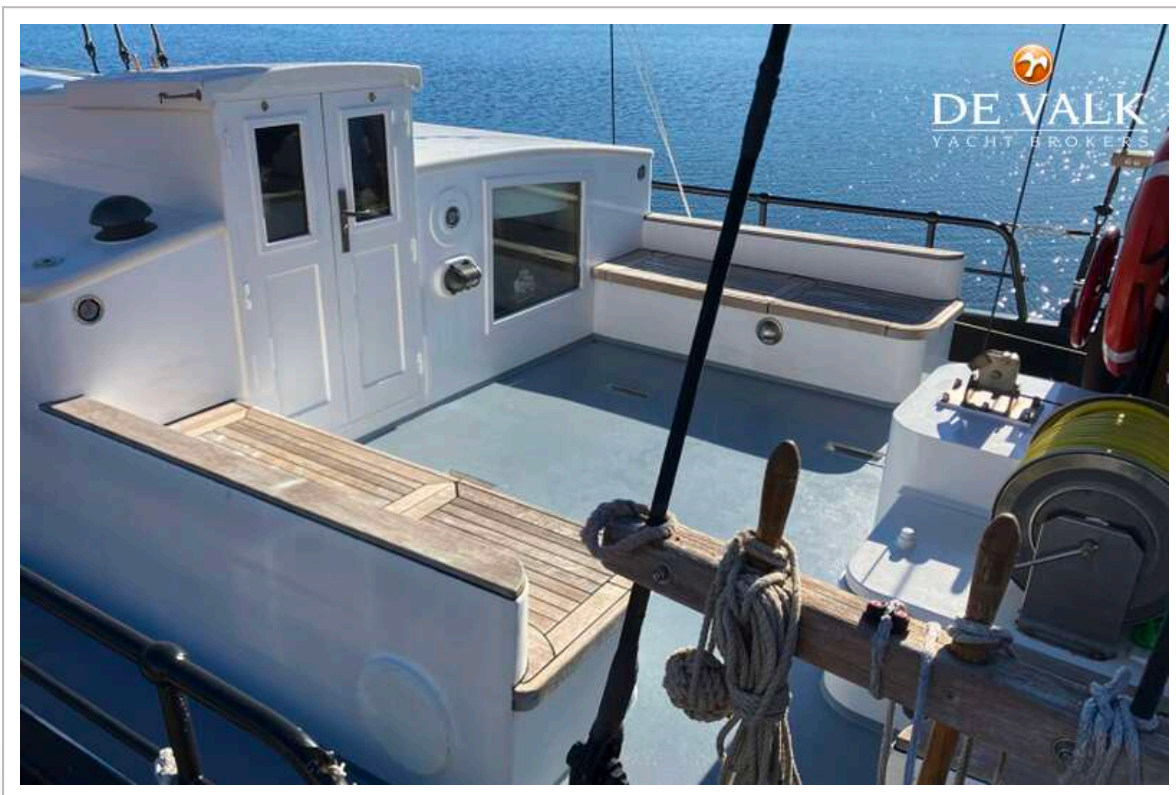
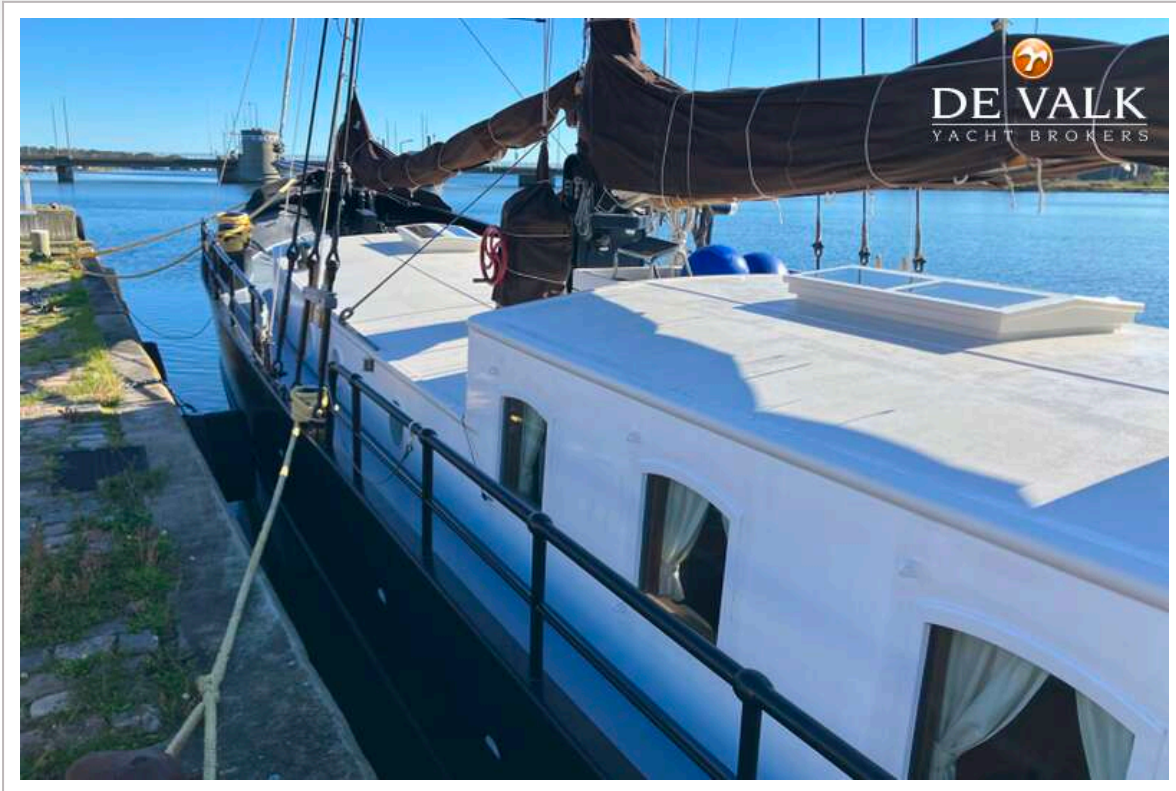




BEKEBREDE ONE OFF

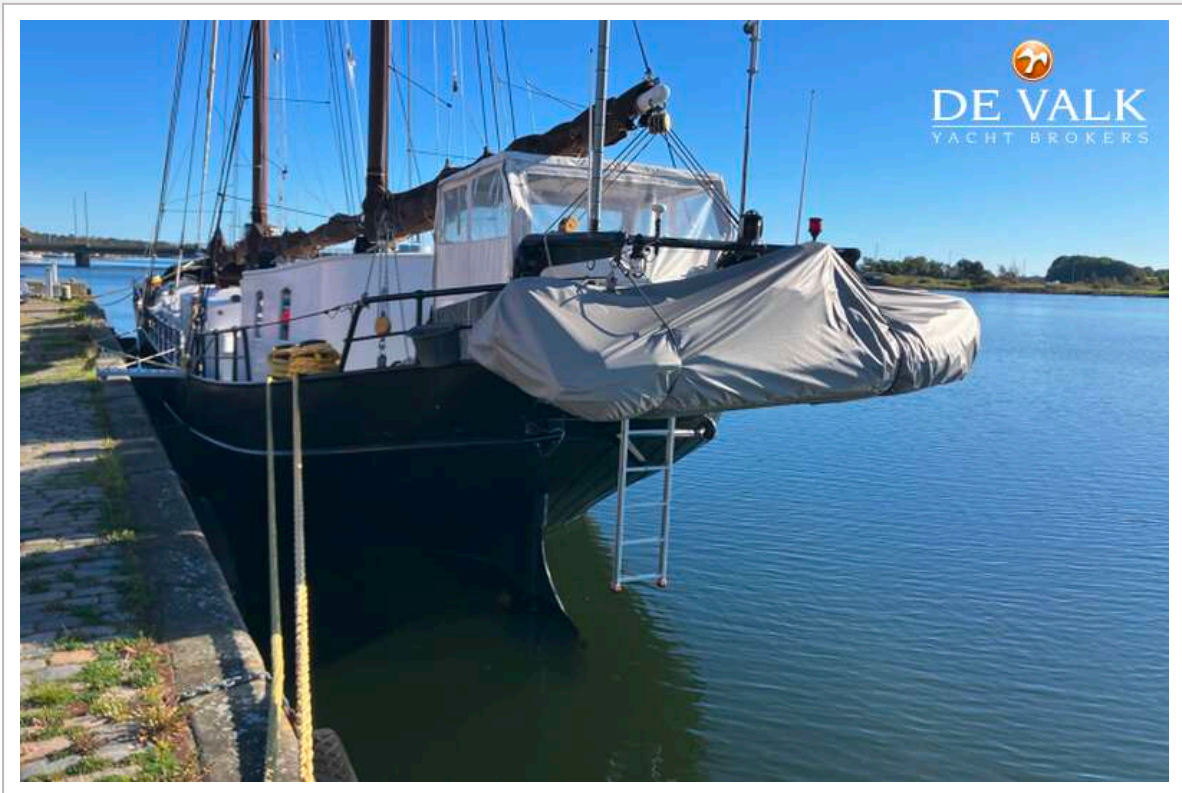


BEKEBREDE ONE OFF



BEKEBREDE ONE OFF

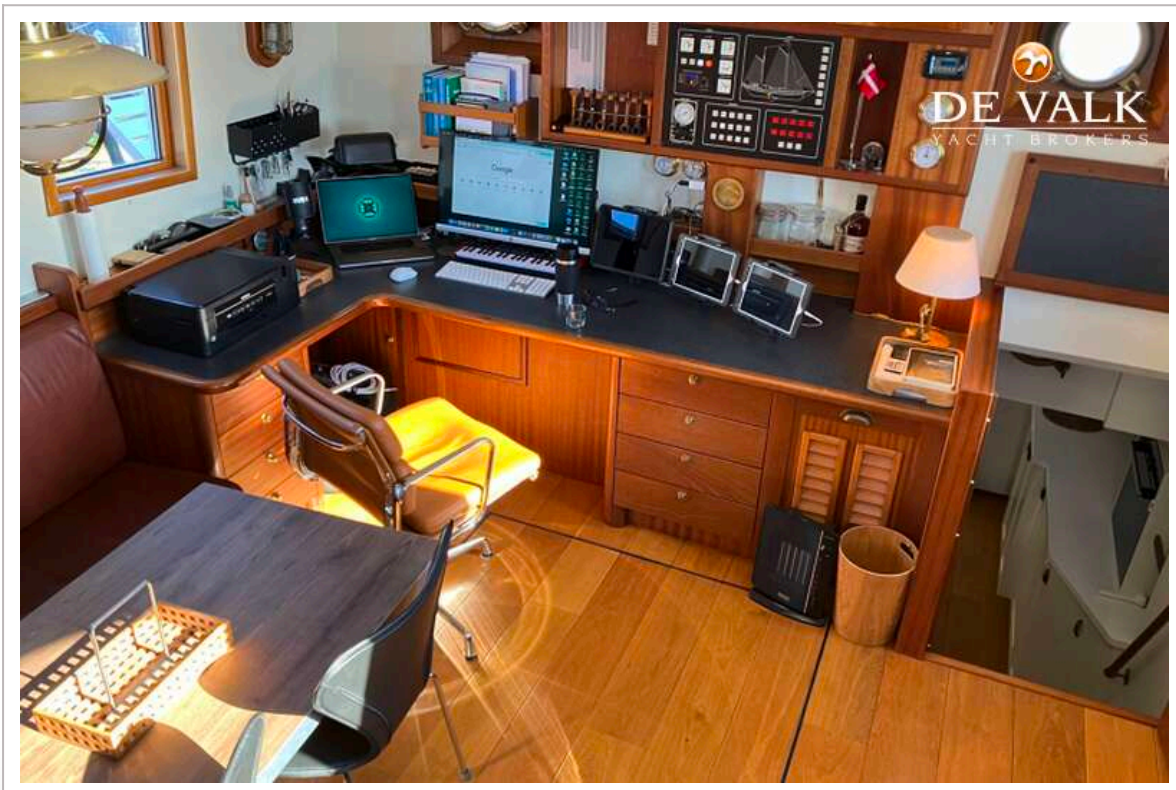
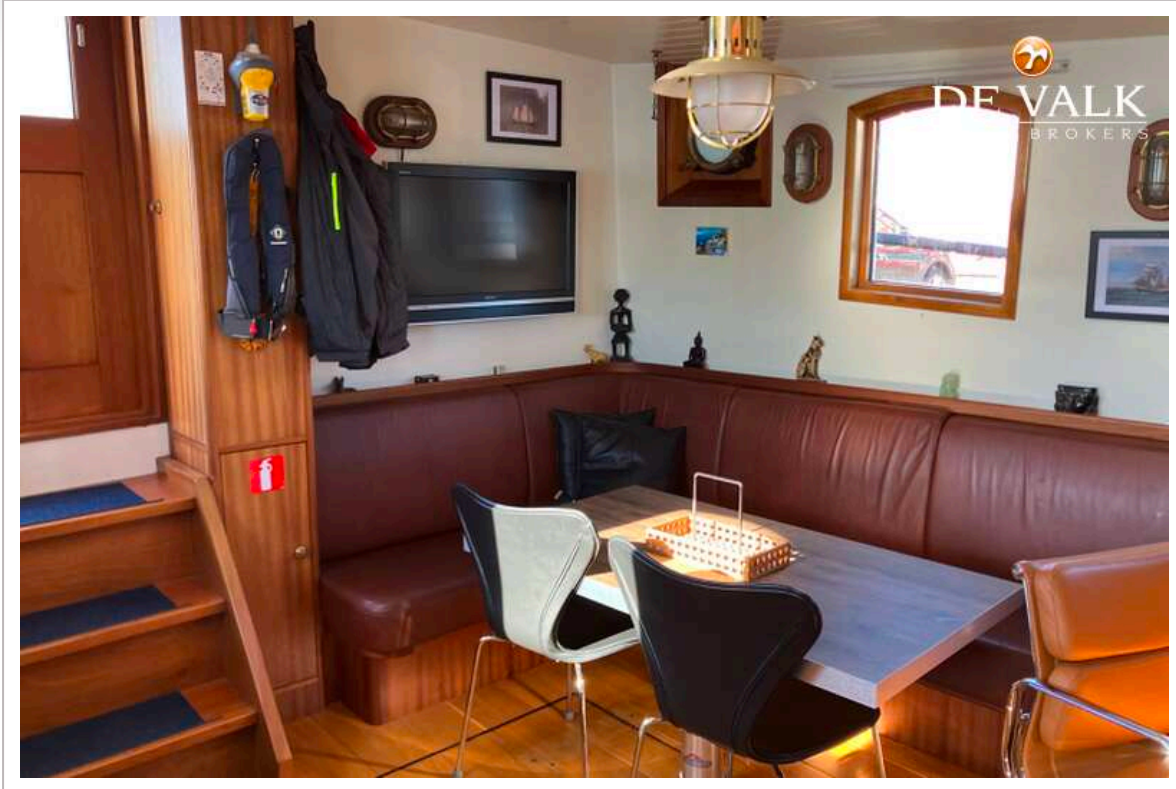




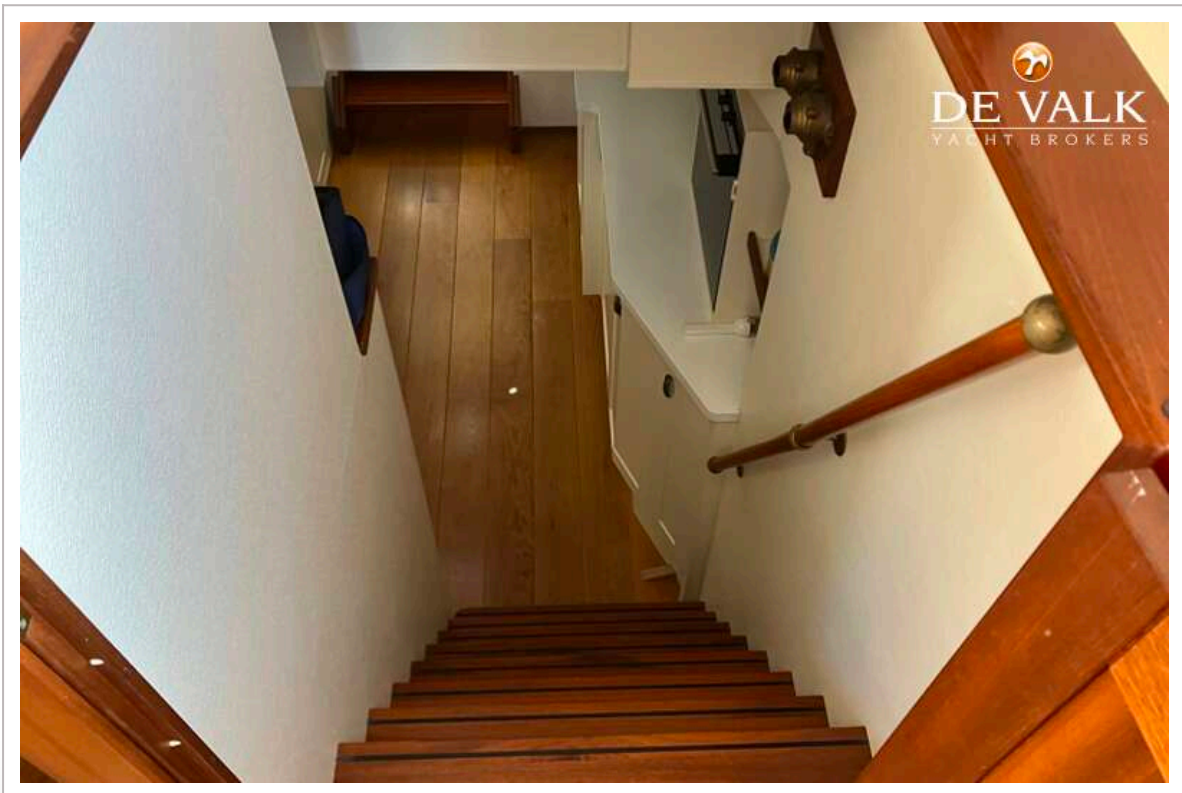
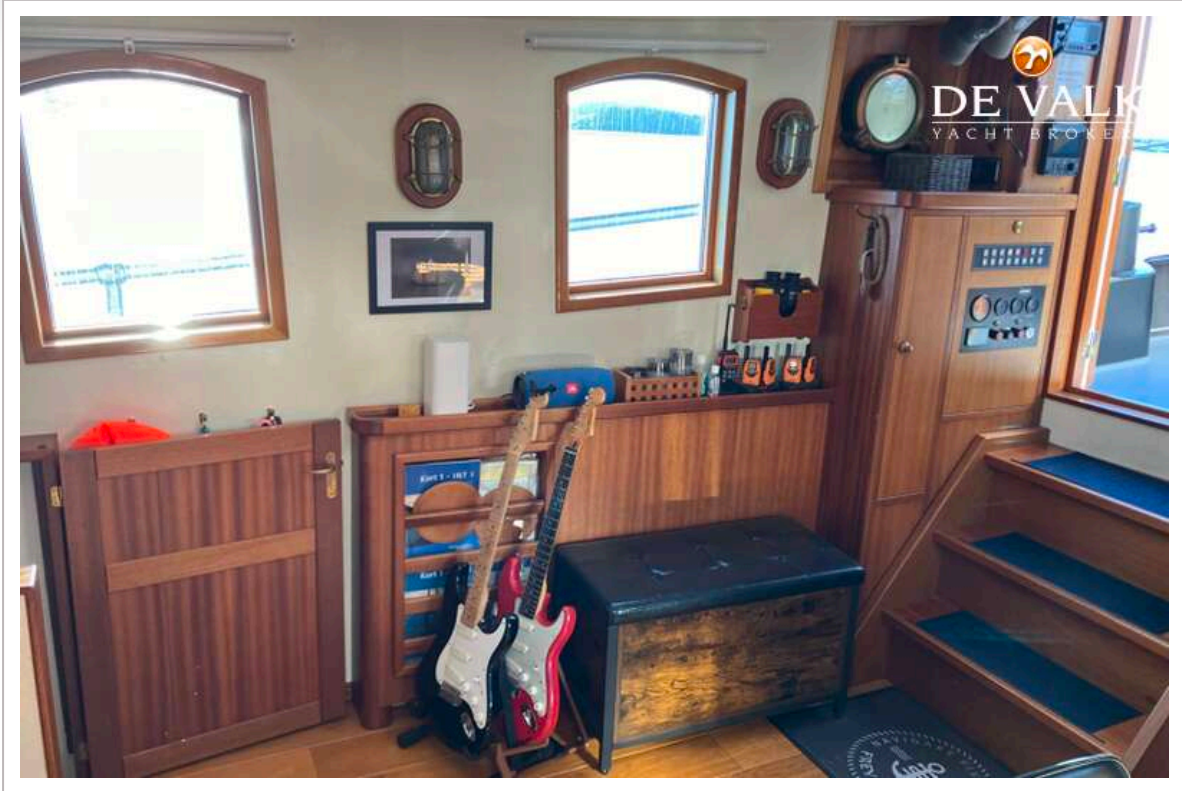
BEKEBREDE ONE OFF



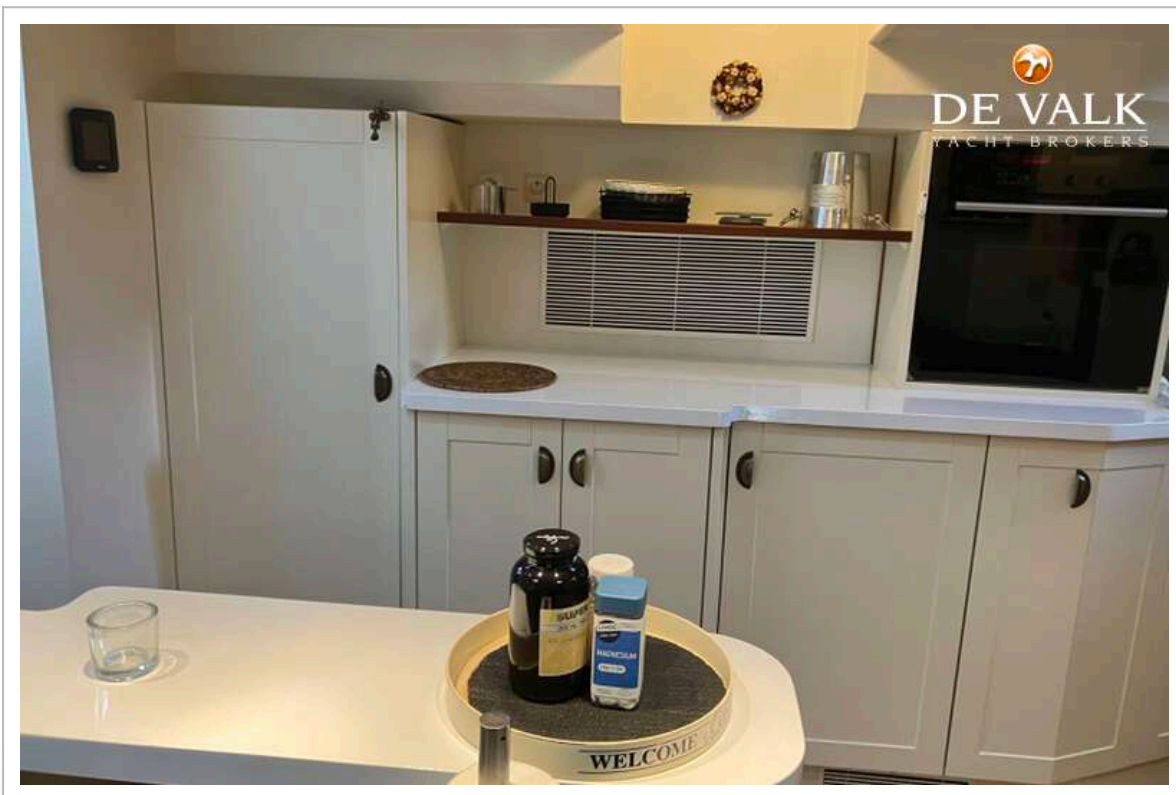
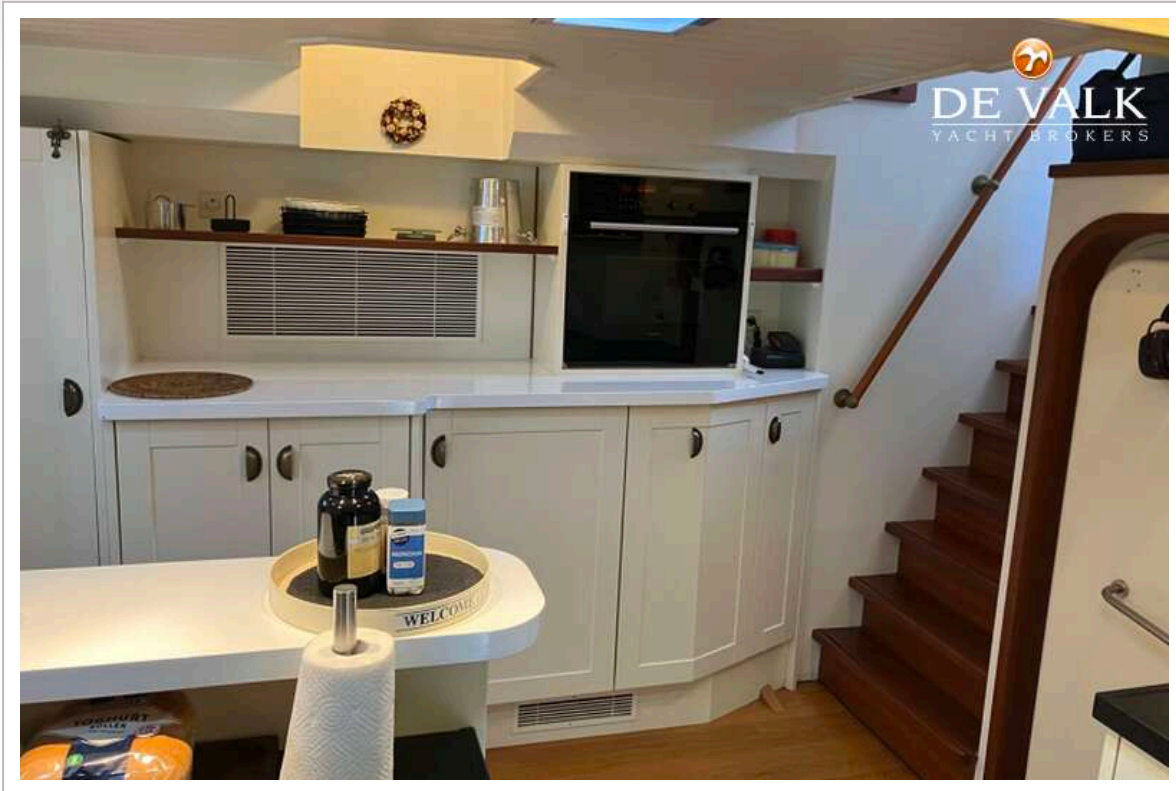
BEKEBREDE ONE OFF



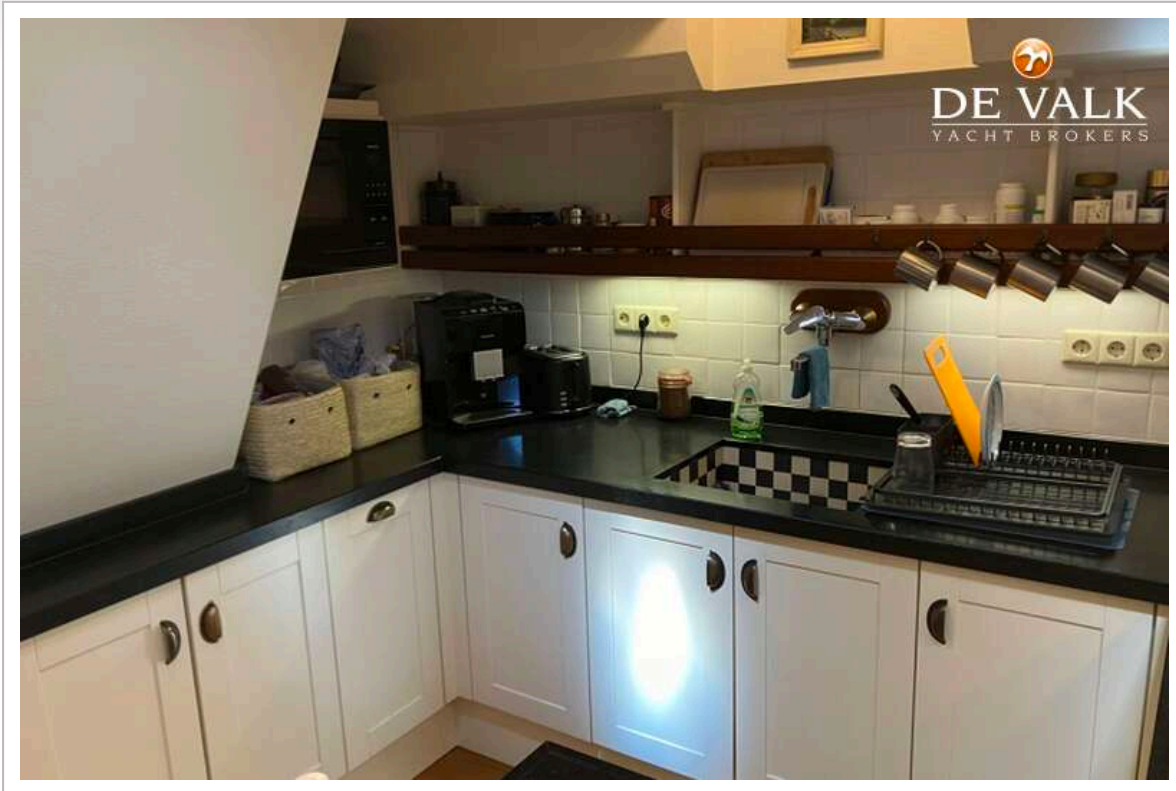
BEKEBREDE ONE OFF



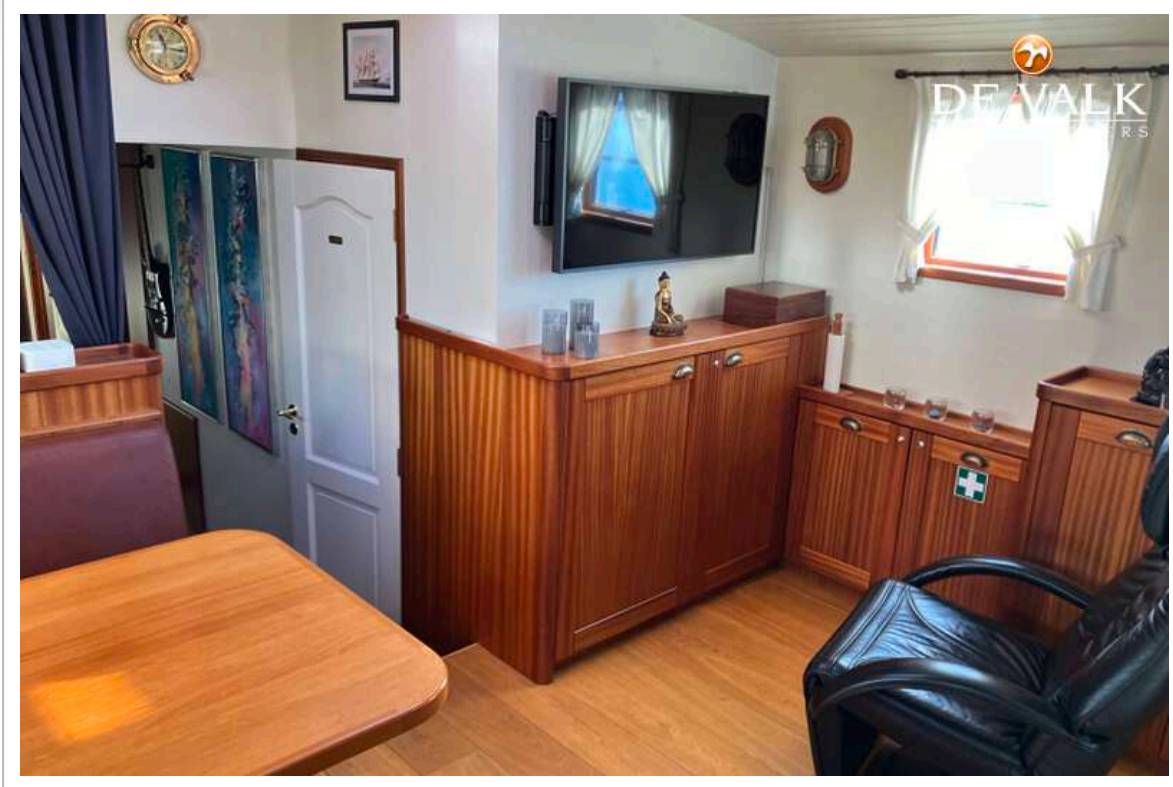
BEKEBREDE ONE OFF



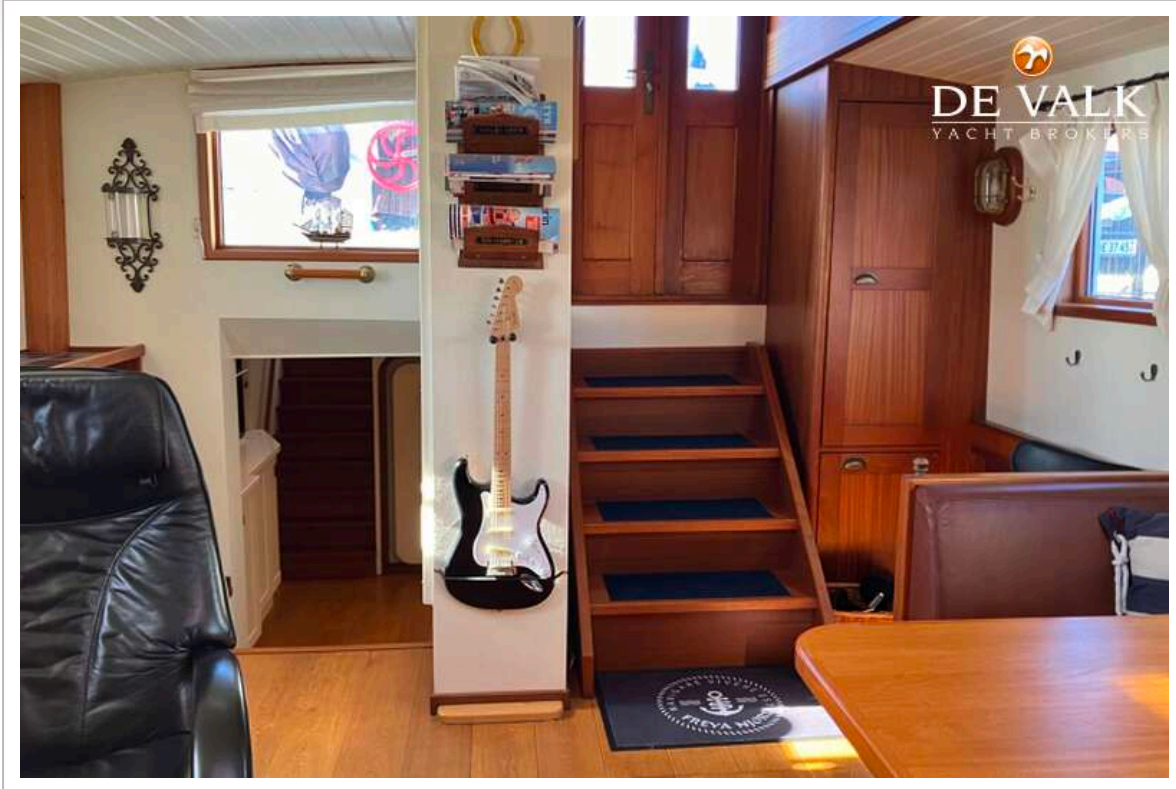
BEKEBREDE ONE OFF



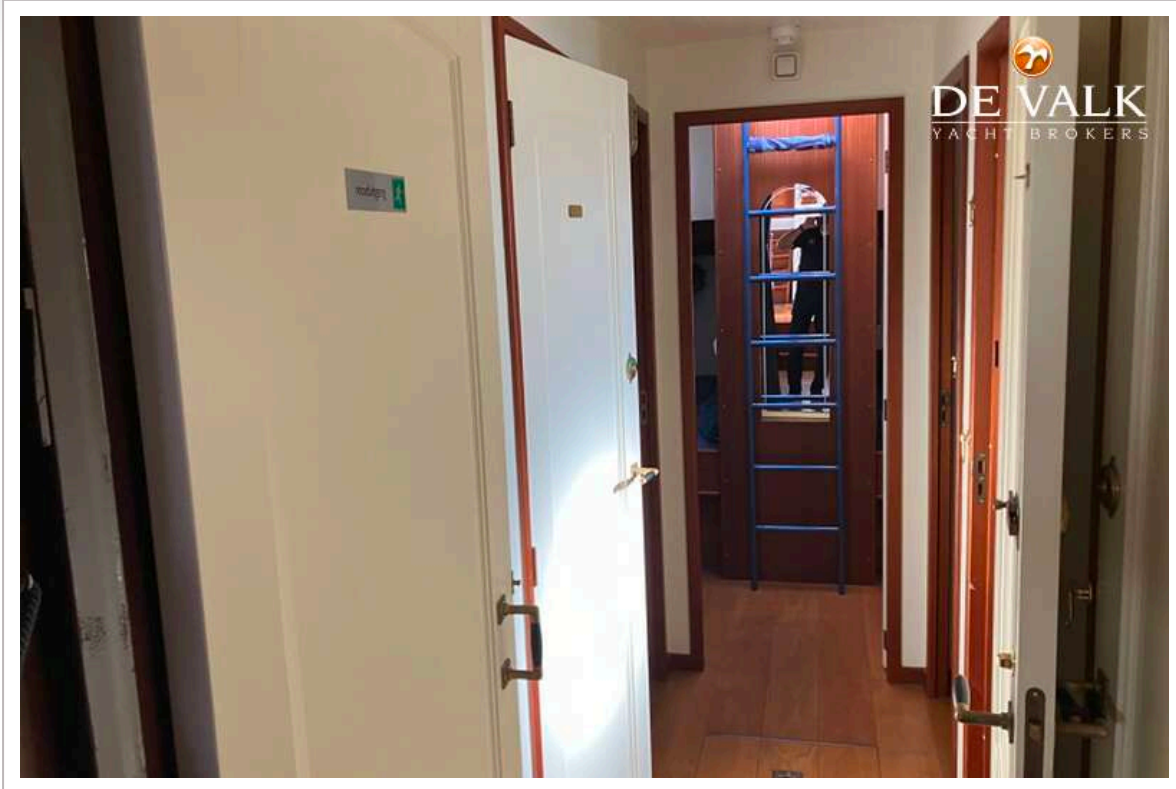
BEKEBREDE ONE OFF



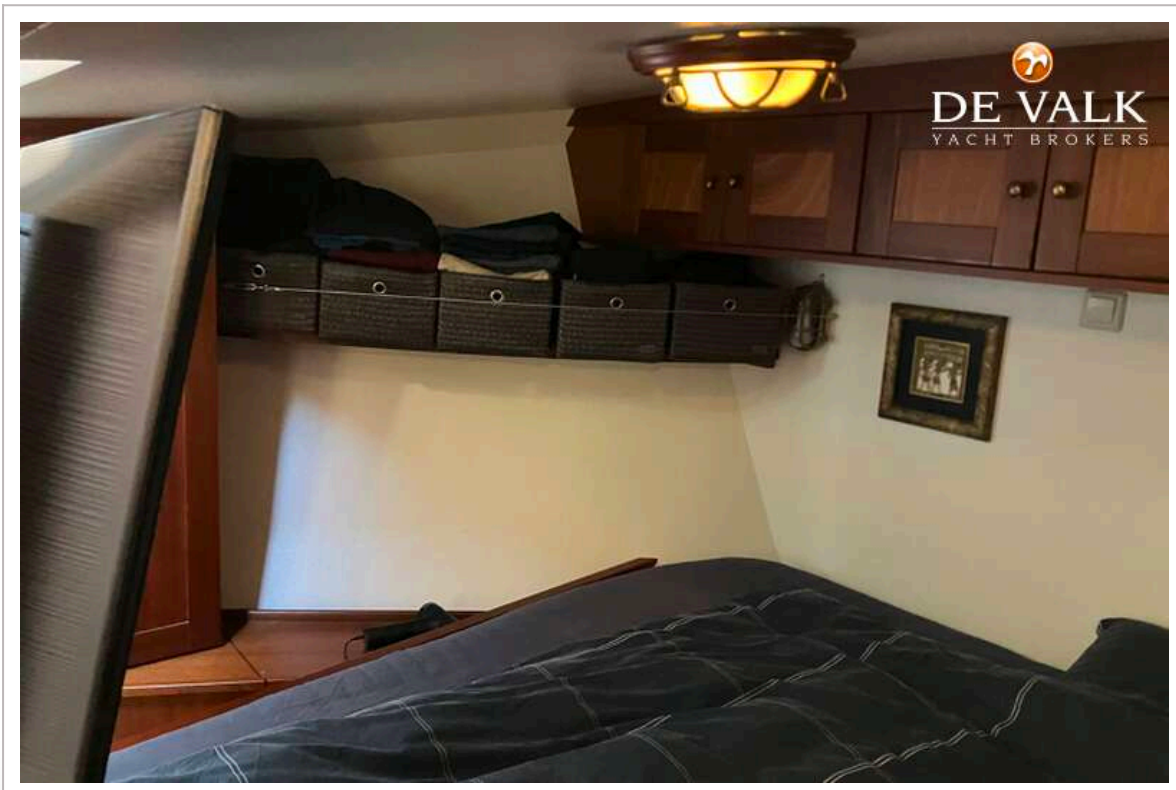
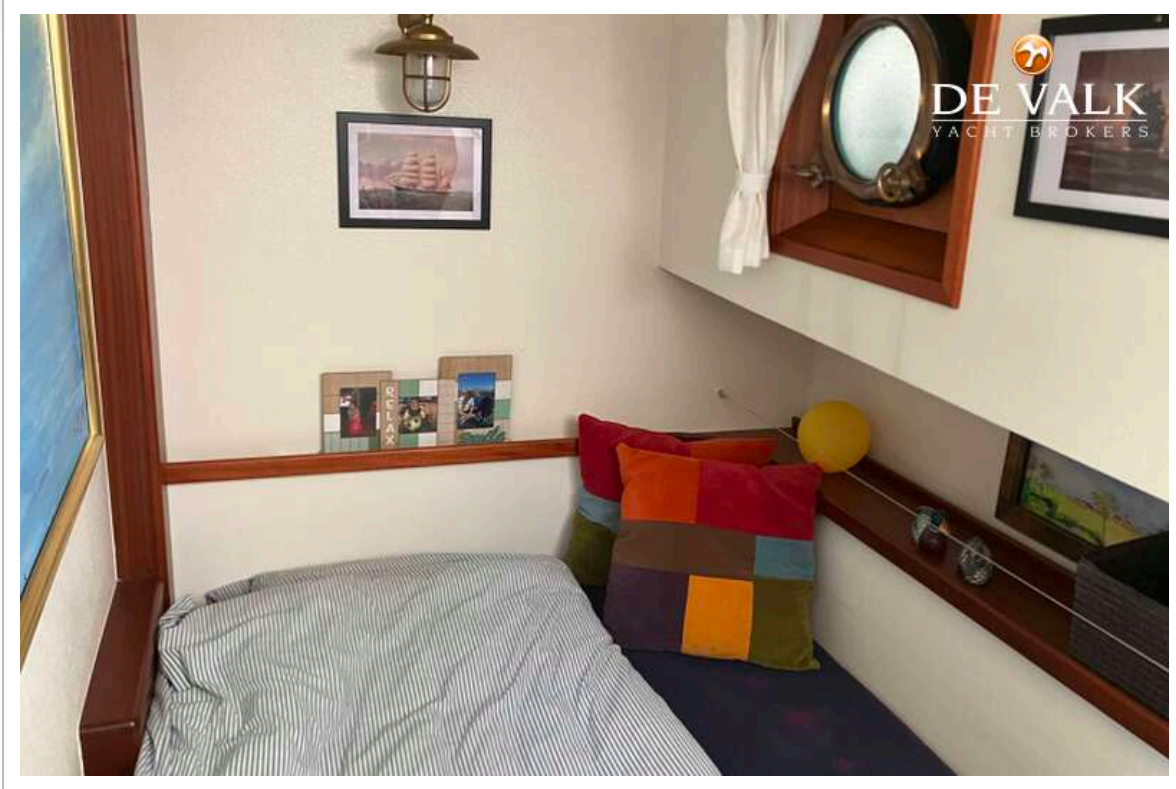
BEKEBREDE ONE OFF



BEKEBREDE ONE OFF



BEKEBREDE ONE OFF



BEKEBREDE ONE OFF

