



DE VALK
YACHT BROKERS



DANISH FLOWER 38



DE VALK
YACHT BROKERS

DANISH FLOWER 38

BROKER'S COMMENTS

The Danish Flower 38, 'daisy' is a fine example of Dutch craftsmanship, sistership of the Danish Rose, purpose designed by Martin Bekebrede for the renowned Bloemsma Shipyard in Makkum, where the word "Flower" stands for the dutch word "Bloem". She has been well maintained throughout her life, recently repainted and fitted with a new set of sails, which further enhances her appeal. With her classic design, robust construction and careful maintenance, she is an excellent opportunity for her next owner. She is now ready to be admired and viewed at our sales marina in Hindeloopen.

Johan Nooitgedagt

SPECIFICATIONS

Dimensions	11.70 x 3.85 x 1.75 (m)	Builder	Bloemsma Makkum
Built	1981	Cabins	1
Material	Steel	Berths	6
Engine(s)	1 x Ford Lehman 2712E diesel	Hp/Kw	80.00 (hp), 58.88 (kw)
Asking price	€ 89.500 (VAT Exempt)	Lying	contact Hindeloopen

CONTACT

Sales office	De Valk Hindeloopen B.V.	Telephone	+31 514 52 40 00
Address	Oosterstrand 1 8713 JS Hindeloopen NL	E-mail	hindeloopen@devalk.nl

DISCLAIMER

These particulars are given in good faith as supplied but cannot be guaranteed.



GENERAL

Model	DANISH FLOWER 38
Type	motorsailer
LOA (m)	11,70
LWL (m)	10,40
Beam (m)	3,85
Draft (m)	1,75
Year built	1981
Builder	Bloemsma Makkum
Country	The Netherlands
Designer	Martin Bekebrede
Displacement (t)	15
Ballast (tonnes)	cast iron
Hull material	steel
Hull colour	blue
Hull shape	round-bilged
Keel type	long keel
Superstructure material	steel
Rubbing strake	stainless steel
Deck material	steel
Deck finish	non-skid paint
Superstructure deck finish	non-skid paint
Antifouling (year)	2023
Dorades	yes
Window frame	aluminium
Portholes	yes
Fuel tank (litre)	stainless steel 400
Freshwater tank (litre)	stainless steel 2x 200liter
Blackwater tank (litre)	yes
Wheel steering	mechanical Vetust MT 105
Outside helm position	mechanical



ACCOMMODATION

Cabins	1
Berths	6
Interior	mahogany
Floor	wood
Pilot house	yes
Heating	diesel ducted hot air Webasto airtop 24/32
Heating 2	stove diesel Dickinson
Countertop	plastic
Sink	stainless steel 3 Burner
Oven	yes
Fridge	yes
Freezer	In the top of fridge
Hot water system	by engine AEG Thermofix
Water pressure system	electrical
Owners cabin	v-bed Front
Bed length (m)	2.0
Wardrobe	hanging and shelves
Toilet	shared
Toilet system	manual
Wash basin	at the toilet

MACHINERY

No of engines	1
Make	Ford Lehman
Type	2712E
HP	80
kW	58.88
Fuel	diesel
Maximum speed (kn)	7
Cruising speed (kn)	6



Consumption (l/hr)	3
Engine cooling system	freshwater heat exchanger
Drive	shaft
Shaft seal	yes
Engine controls	mechanical
Gearbox	mechanical Newage Coventry 502402
Bowthruster	electric Vetus 75kgf
Exhaust	watercooled
Propeller type	fixed
Propeller blades	3
Propeller shaft material	stainless steel
Manual bilge pump	yes
Electric bilge pump	yes
Batteries	yes
Start battery	yes
Battery charger	Mastervolt
Solar panel	2 SPanels, Fox-MD1 Multi Display, Fox-320 Solar charge regulator

NAVIGATION

Compass	yes
Electric compass	Autohelm compass
Depth sounder	Clipper Depth
Log	Raymarine i60 Display
VHF	2020 Raymarine
Autopilot	Robertson
Radar	Does not work
GPS	AP Navigator MK8
Navtex	K41 Vecom Navtex ontvanger

EQUIPMENT



Fixed windscreen	yes
Cockpit cushions	yes
Cockpit table	yes
Boarding ladder	stainless steel
Anchor	CQR Plough
Anchor chain	yes
Windlass	manual
Sea railing	wire
Grab rail (superstructure)	wood
Pushpit	yes
Pulpit	yes
Life raft	container Plastimo
Life raft (pers)	container 6
Last life raft survey	No survey
Fenders	yes
Mooring lines	yes
Radio-cd player	Pioneer
Cockpit speakers	yes
Speakers in salon	yes
Clock - barometer	yes

RIGGING

Rigging	ketch
Standing rigging	wire
Brand mast	Seldén
Material mast	aluminium
Spreaders	yes
Mainsail	2024 28m2
Mainsail cover	yes
Battcars	yes
Mizzen	2024 16m2



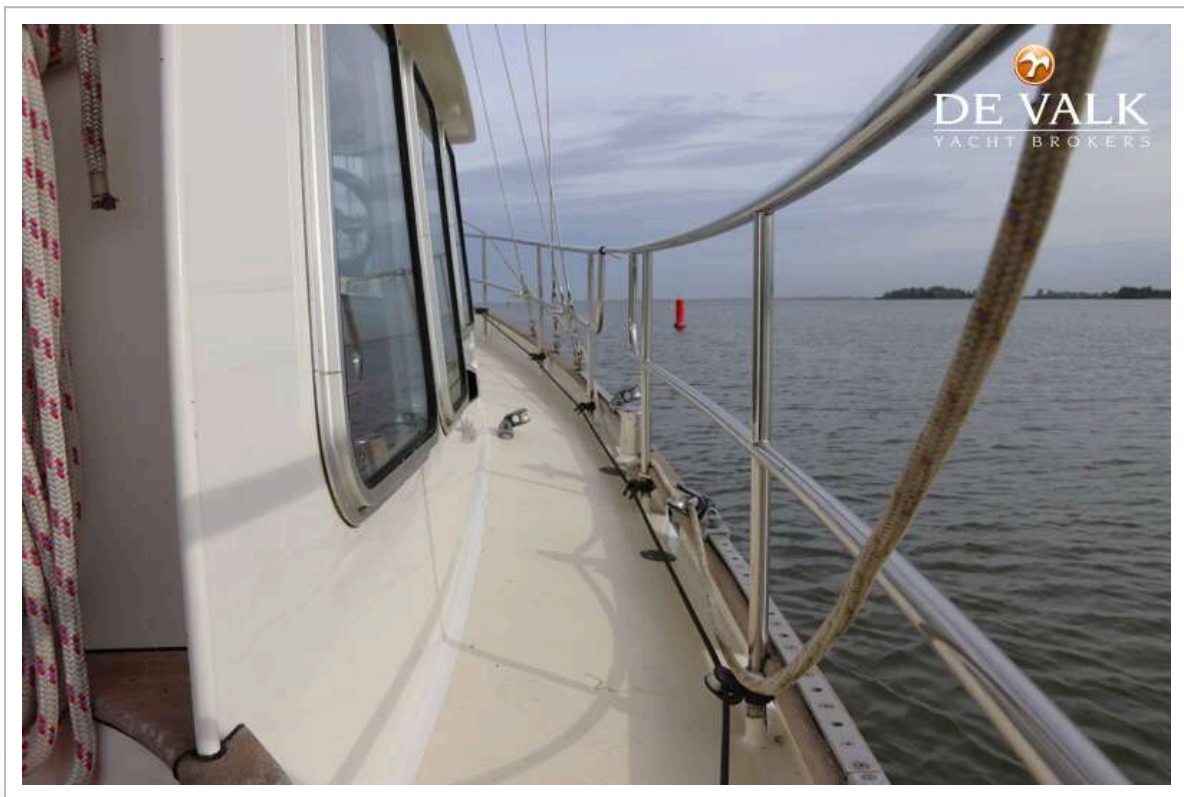
Mizzen sailcover	yes
Jib	2024 23m2
Genoa	2024 44m2
Genoa furler	yes
Cutter furler	Needs to be serviced
Reefing System	quick-one-line-reefing
Backstay adjuster	mechanical
Boomvang	tackle
Secondary sheet winch	2x Lewmar ST44
Genoa sheetwinches	2x Lewmar ST 50



DANISH FLOWER 38



DANISH FLOWER 38



DANISH FLOWER 38



DANISH FLOWER 38



DANISH FLOWER 38



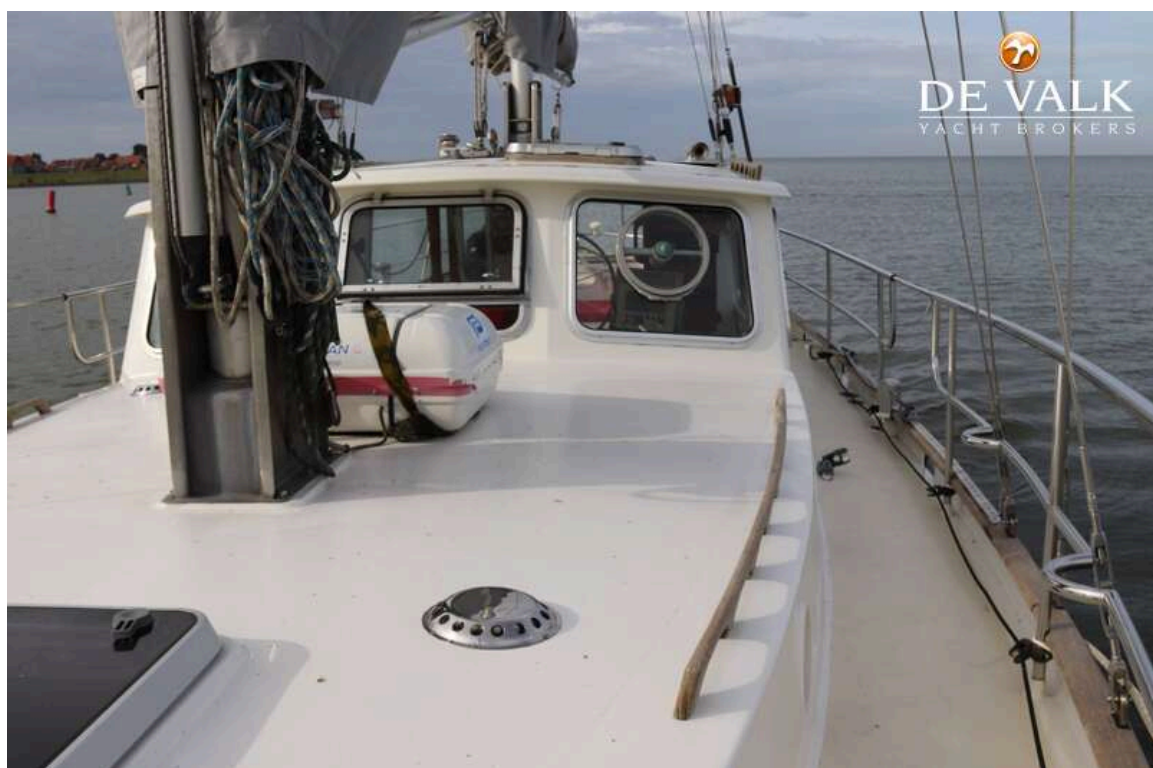
DANISH FLOWER 38



DANISH FLOWER 38



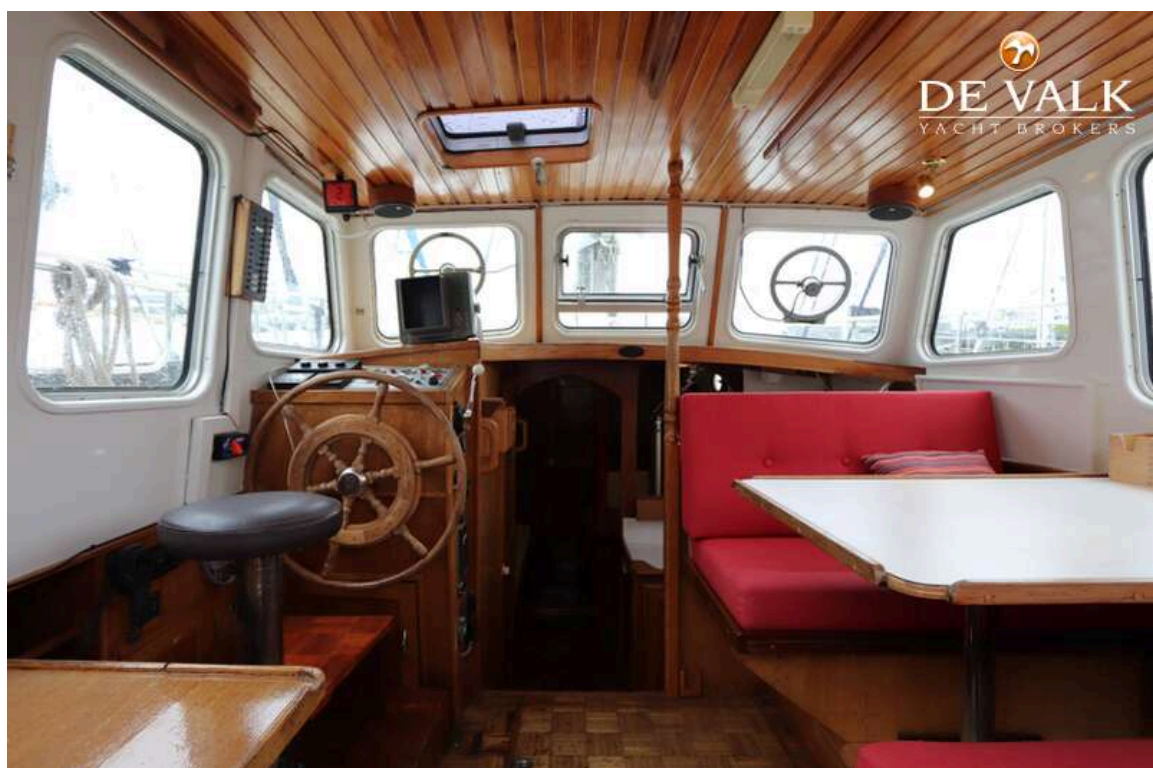
DANISH FLOWER 38



DANISH FLOWER 38



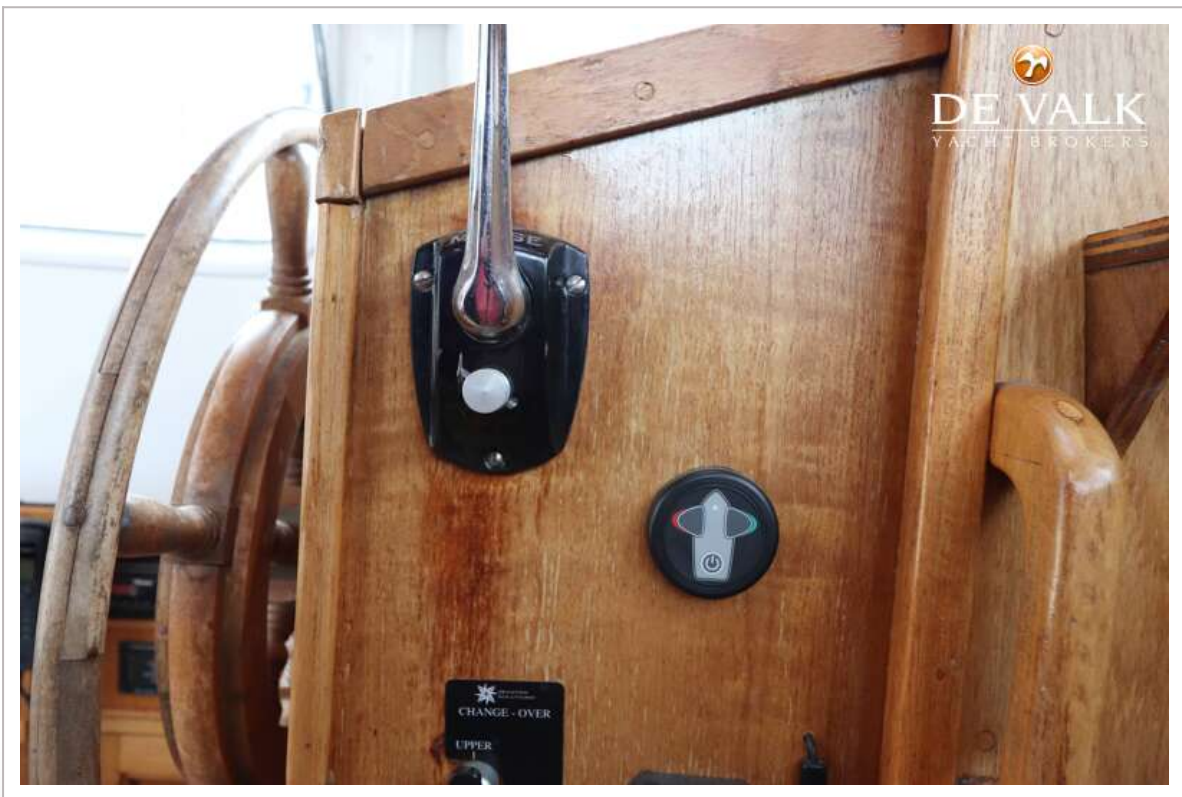
DANISH FLOWER 38

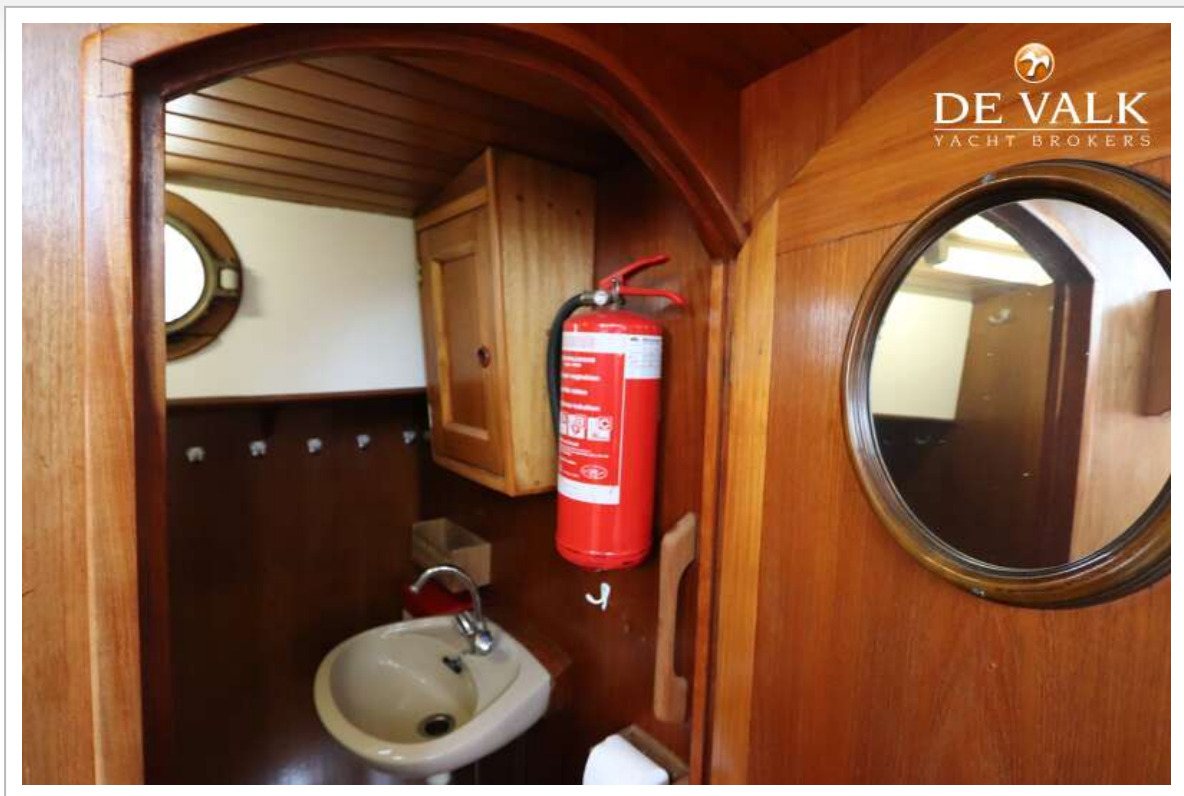


DANISH FLOWER 38

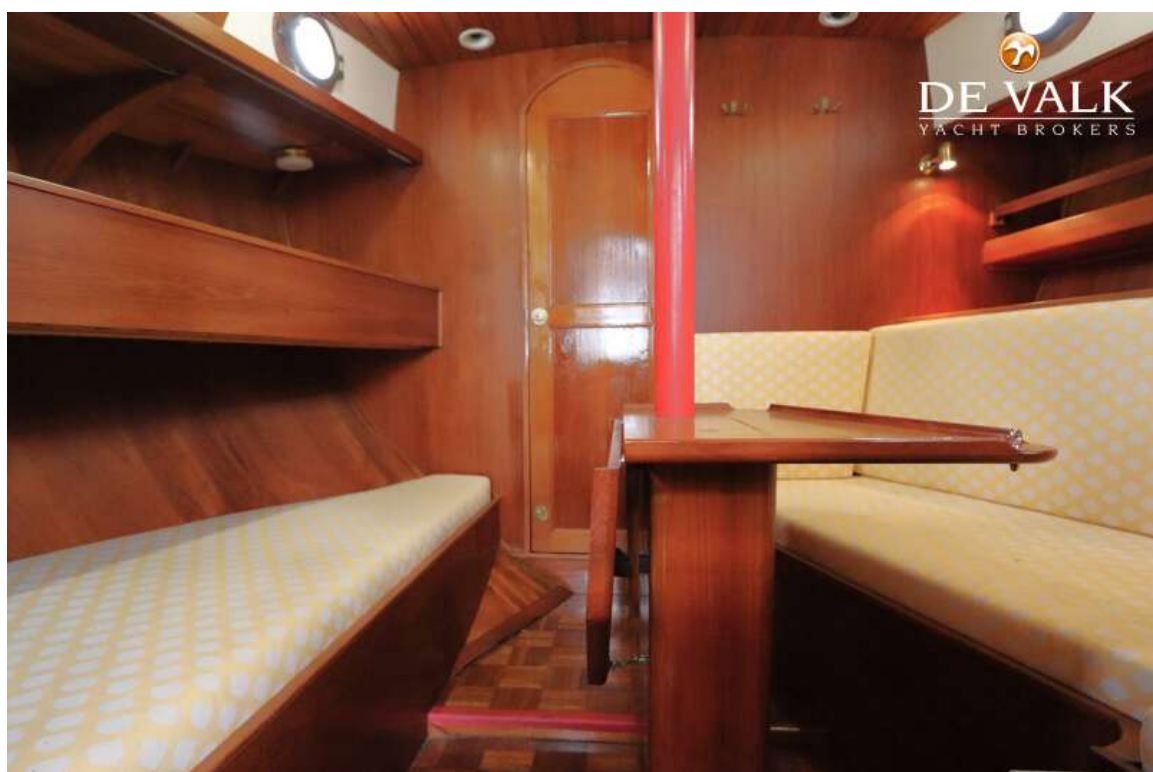


DANISH FLOWER 38





DANISH FLOWER 38



DANISH FLOWER 38



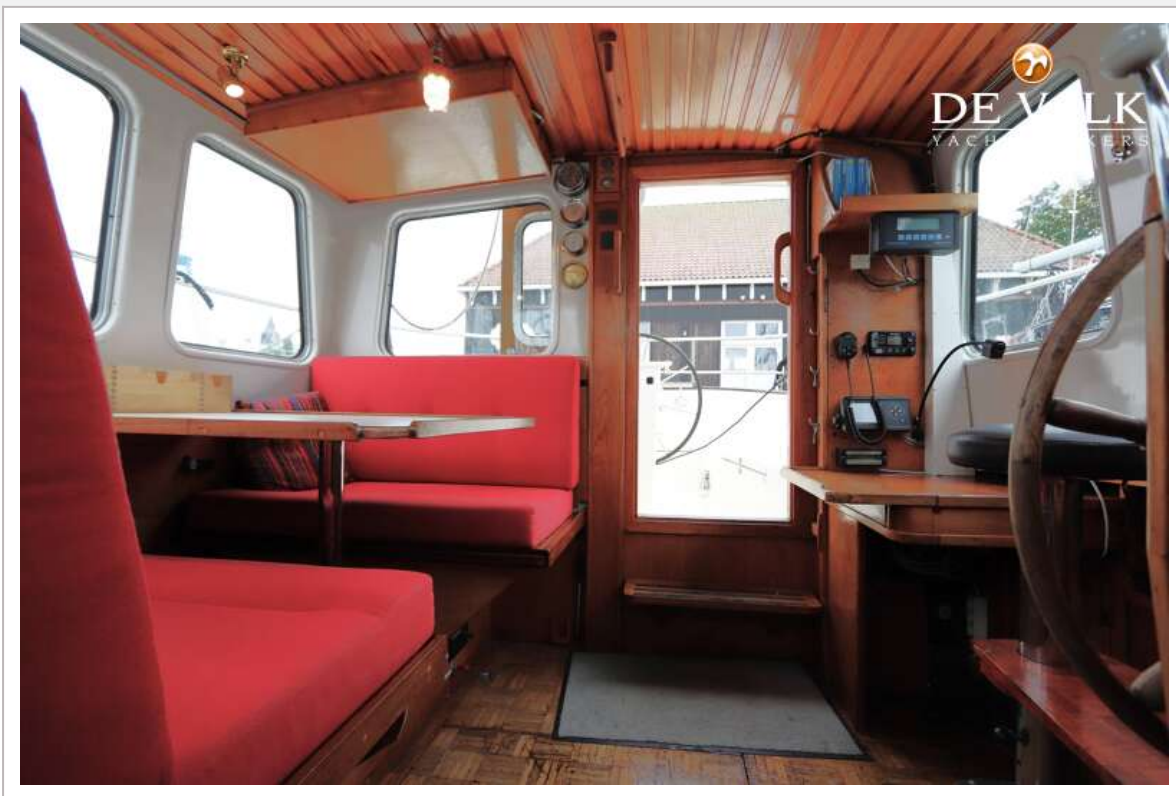
DANISH FLOWER 38



DANISH FLOWER 38



DANISH FLOWER 38



DANISH FLOWER 38

