



## BENETEAU OCEANIS 411 ELECTRIC



DE VALK  
YACHT BROKERS

# BENETEAU OCEANIS 411 ELECTRIC

## BROKER'S COMMENTS

The Beneteau Oceanis 411 is known as a comfortable and seaworthy yacht and this model takes that to a whole new level. This is the ultimate eco-friendly Oceanis: fully equipped with a powerful 20 kW electric motor. That means whisper-quiet sailing and carefree enjoyment of sailing with a minimal ecological footprint. The electric drive makes short trips and longer voyages enjoyable. This Beneteau Oceanis 411 Electric is being auctioned online, bidding is only possible through Bright Auctions. All auction information can be found at:

<https://brightauctions.com/en/lot-details/20580/>

*Stein Dubbeldam*

## SPECIFICATIONS

<b>Dimensions</b>	12.28 x 3.96 x 1.70 (m)	<b>Builder</b>	Beneteau
<b>Built</b>	1998	<b>Cabins</b>	3
<b>Material</b>	GRP	<b>Berths</b>	6
<b>Engine(s)</b>	1 x BellMarine e17.5 elec	<b>Hp/Kw</b>	28.00 (hp), 20.61 (kw)
<b>Asking price</b>	€ 25.000 (VAT Paid)	<b>Lying</b>	at sales office

## CONTACT

<b>Sales office</b>	De Valk Hindeloopen B.V.	<b>Telephone</b>	+31 514 52 40 00
<b>Address</b>	Oosterstrand 1 8713 JS Hindeloopen NL	<b>E-mail</b>	hindeloopen@devalk.nl

## DISCLAIMER

These particulars are given in good faith as supplied but cannot be guaranteed.



# BENETEAU OCEANIS 411 ELECTRIC

## GENERAL

<b>Model</b>	BENETEAU OCEANIS 411 ELECTRIC
<b>Type</b>	sailing yacht
<b>LOA (m)</b>	12,28
<b>Beam (m)</b>	3,96
<b>Draft (m)</b>	1,70
<b>Air draft (m)</b>	18,00
<b>Headroom (m)</b>	2,00
<b>Year built</b>	1998
<b>Builder</b>	Beneteau
<b>Country</b>	France
<b>Designer</b>	Groupe Finot
<b>Displacement (t)</b>	7,8
<b>Ballast (tonnes)</b>	cast iron and lead
<b>CE norm</b>	A
<b>Hull material</b>	GRP
<b>Hull colour</b>	white
<b>Hull shape</b>	round-bilged
<b>Keel type</b>	fin keel with bulb
<b>Superstructure material</b>	GRP
<b>Rubbing strake</b>	wood
<b>Deck material</b>	GRP
<b>Deck finish</b>	non-skid moulded in
<b>Superstructure deck finish</b>	non-skid moulded in
<b>Cockpit deck finish</b>	non-skid moulded in
<b>Antifouling (year)</b>	2025
<b>Window frame</b>	aluminium
<b>Window material</b>	perspex
<b>Deckhatch</b>	7
<b>Portholes</b>	aluminium
<b>Freshwater tank (litre)</b>	polyethylene 2x 150 ltr.



# BENETEAU OCEANIS 411 ELECTRIC

Level indicator (freshwater)	yes
Blackwater tank (litre)	polyethylene
Level indicator (blackwater)	yes
Blackwater tank extraction	deck extraction + pump
Wheel steering	chain steering
Outside helm position	yes
Emergency tiller	yes
Extra info	2025 All valves replaced

## ACCOMMODATION

Cabins	3
Berths	6
Interior	mahogany
Floor	wood
Headroom saloon (m)	2 mtr.
Galley	yes
Countertop	Duropol
Sink	stainless steel   Double
Cooker	calor gas Voyager 4500
Oven	In cooker
Fridge	Isotherm GE-150   refrigeration unit 2024
Hot water system	220V Albin pump premium water heater 22L
Water pressure system	electrical
Owners cabin	double bed
Bed length (m)	2,00x1,40 mtr.
Wardrobe	hanging and shelves
Bathroom	en suite
Toilet	en suite
Toilet system	manual   Jabsco
Wash basin	in the bathroom
Shower	shared



# BENETEAU OCEANIS 411 ELECTRIC

<b>Guest cabin 1</b>	double bed
<b>Bed length (m)</b>	1,95x1,45 mtr.
<b>Wardrobe</b>	hanging and shelves
<b>Bathroom</b>	shared
<b>Toilet</b>	shared
<b>Toilet system</b>	manual
<b>Wash basin</b>	at the toilet
<b>Guest cabin 2</b>	double bed
<b>Bed length (m)</b>	1,95 x 1,45 mtr.
<b>Wardrobe</b>	hanging and shelves

## MACHINERY

<b>No of engines</b>	1
<b>Make</b>	BellMarine
<b>Type</b>	E17.5
<b>HP</b>	28
<b>kW</b>	20.61
<b>Fuel</b>	electric
<b>Year installed</b>	2024
<b>Maximum speed (kn)</b>	8,5
<b>Cruising speed (kn)</b>	4
<b>Engine cooling system</b>	freshwater heat exchanger
<b>Drive</b>	shaft
<b>Shaft seal</b>	2024
<b>Engine controls</b>	electrical
<b>Bowthruster</b>	electric 2024
<b>Exhaust</b>	dry
<b>Propeller type</b>	fixed
<b>Propeller shaft material</b>	stainless steel 2024
<b>Shaft lubrication</b>	water
<b>Manual bilge pump</b>	yes



# BENETEAU OCEANIS 411 ELECTRIC

Electric bilge pump	yes
Electrical installation	12/ 230 V
Generator	3 kW
Running hours generator	10
Service battery	2x Varta 12V 140Ah
Electric engine battery	4x E-werf 51.2V 100Ah
Battery monitor	Victron
Battery charger	Victron MultiPlus-II 50 Ah
Inverter	Victron Multiplus 48/5000
Solar panel	2x Victron Bleu solarSPM041151202
Shorepower	with cable

## NAVIGATION

Multi control display	2023   Raymarine I70
Windset	Raymarine I60 wind
VHF	2023   Raymarine ray 63
Plotter/GPS	2023   Raymarine Axiom+ 9
AIS transponder	2023

## EQUIPMENT

Sprayhood	yes
Bimini	yes
Cockpit cushions	yes
Cockpit table	yes
Boarding ladder	yes
Gangway	yes
Deck shower	yes
Anchor	Danforth
Anchor chain	yes
Windlass	electrical
Grab rail (superstructure)	yes



Railing side opening gates	yes
Pushpit	yes
Pulpit	yes

## RIGGING

Rigging	sloop
Standing rigging	wire
Brand mast	Z-Spar
Material mast	aluminium
Spreaders	yes
Mainsail	Quantum Sails   2022
Stoway mast	yes
Genoa	Quantum Sails   2022
Reefing System	main in-mast furling
Boomvang	gasspring
Genoa sheetwinches	2x Lewmar 48 2 speed self tailing
Multifunctional winches	2x Lewmar 30 2 speed self tailing



# BENETEAU OCEANIS 411 ELECTRIC



# BENETEAU OCEANIS 411 ELECTRIC



BENETEAU OCEANIS 411 ELECTRIC



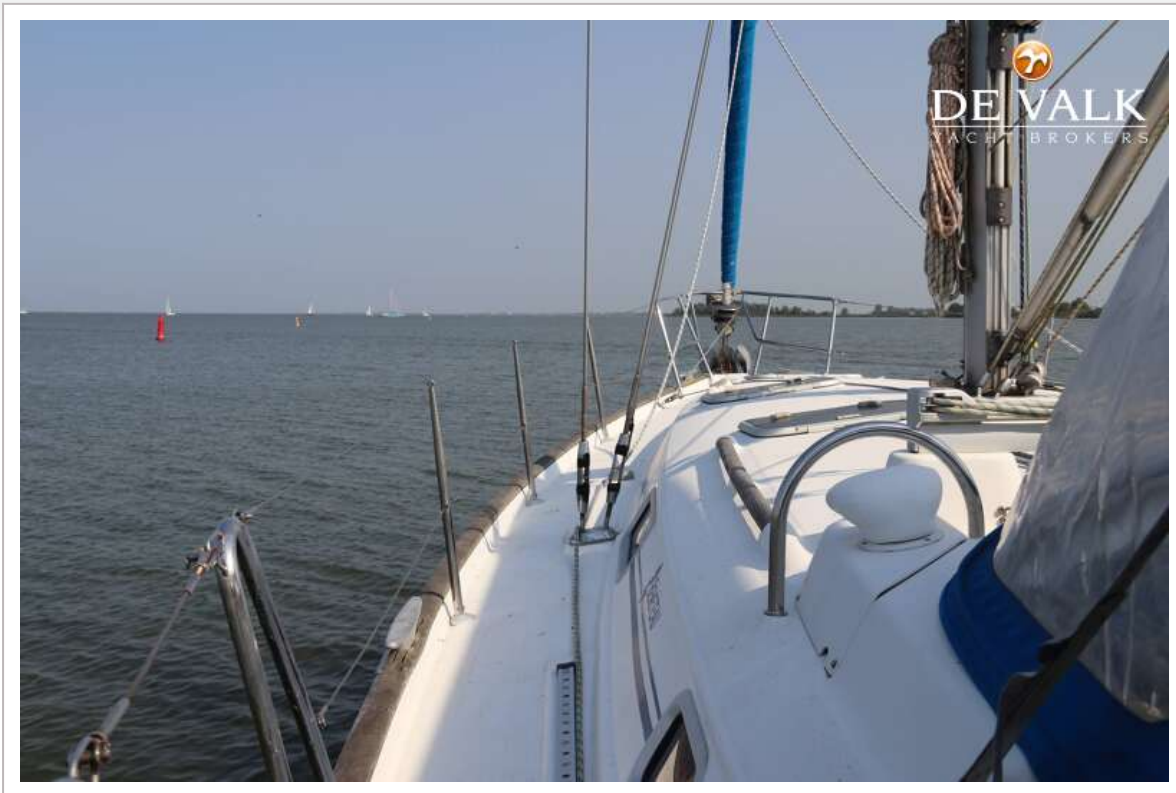
# BENETEAU OCEANIS 411 ELECTRIC



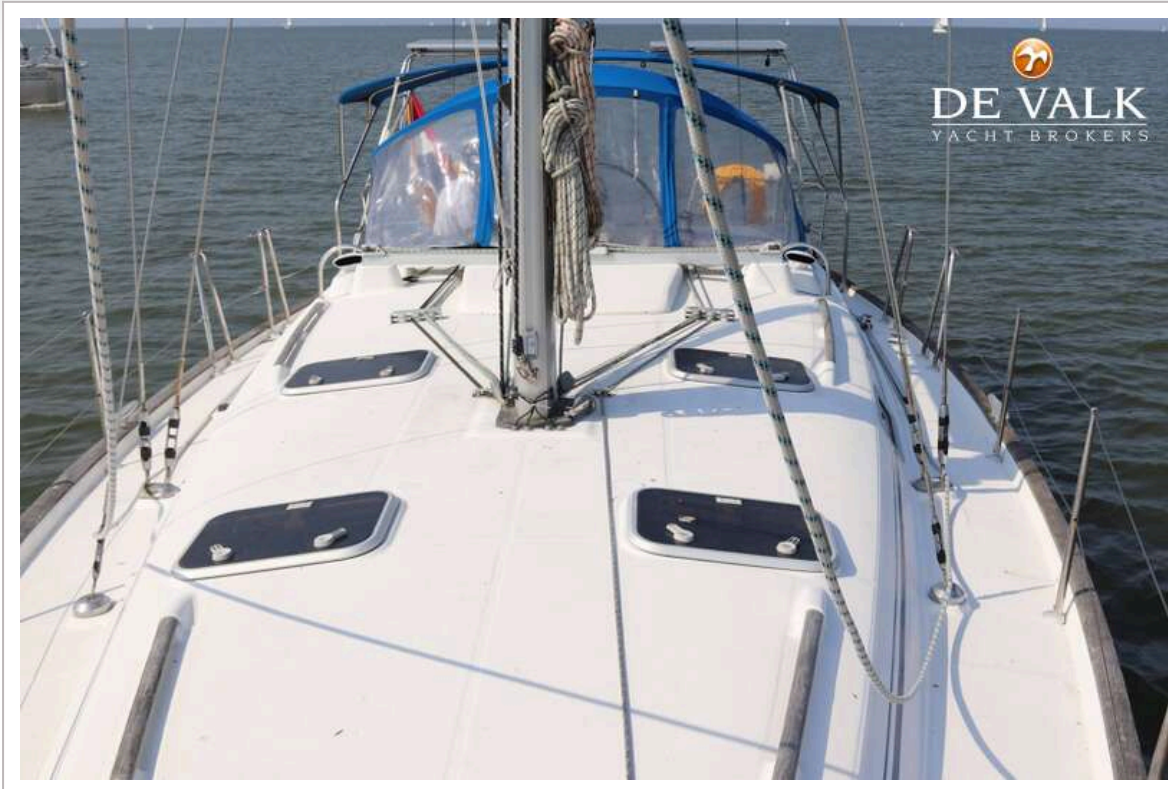
# BENETEAU OCEANIS 411 ELECTRIC



# BENETEAU OCEANIS 411 ELECTRIC



# BENETEAU OCEANIS 411 ELECTRIC



# BENETEAU OCEANIS 411 ELECTRIC



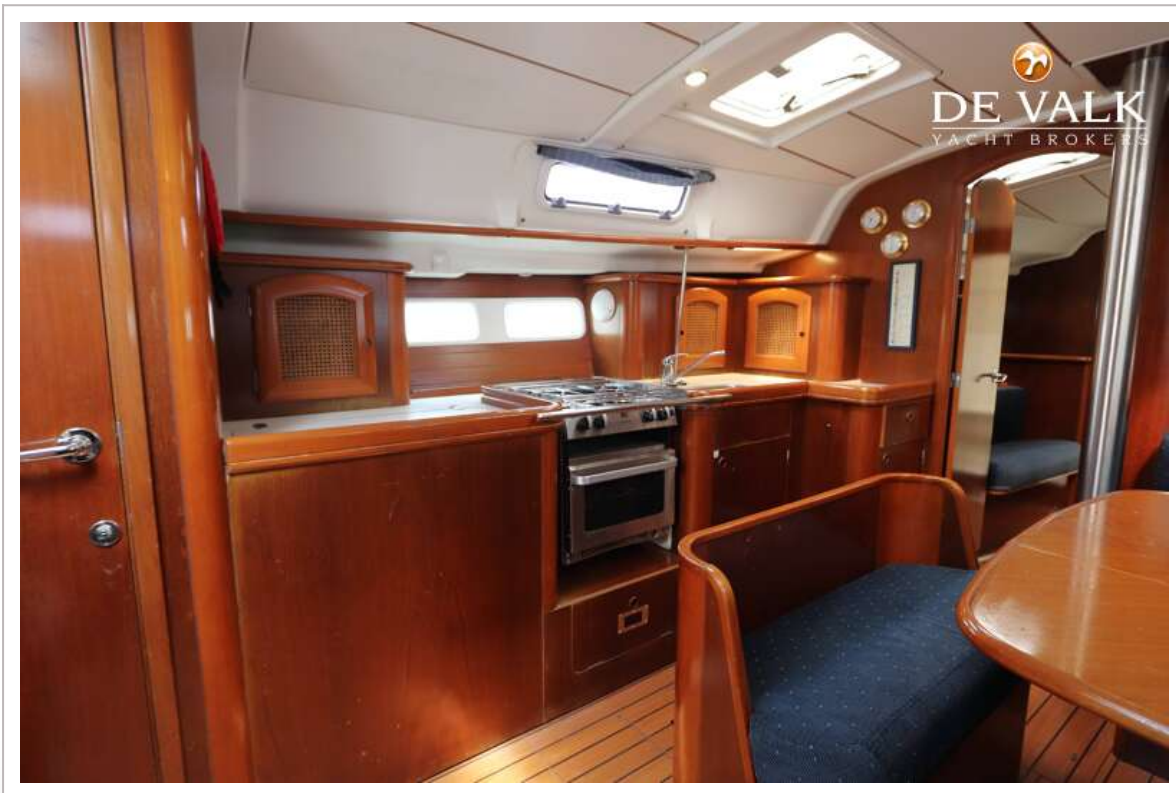
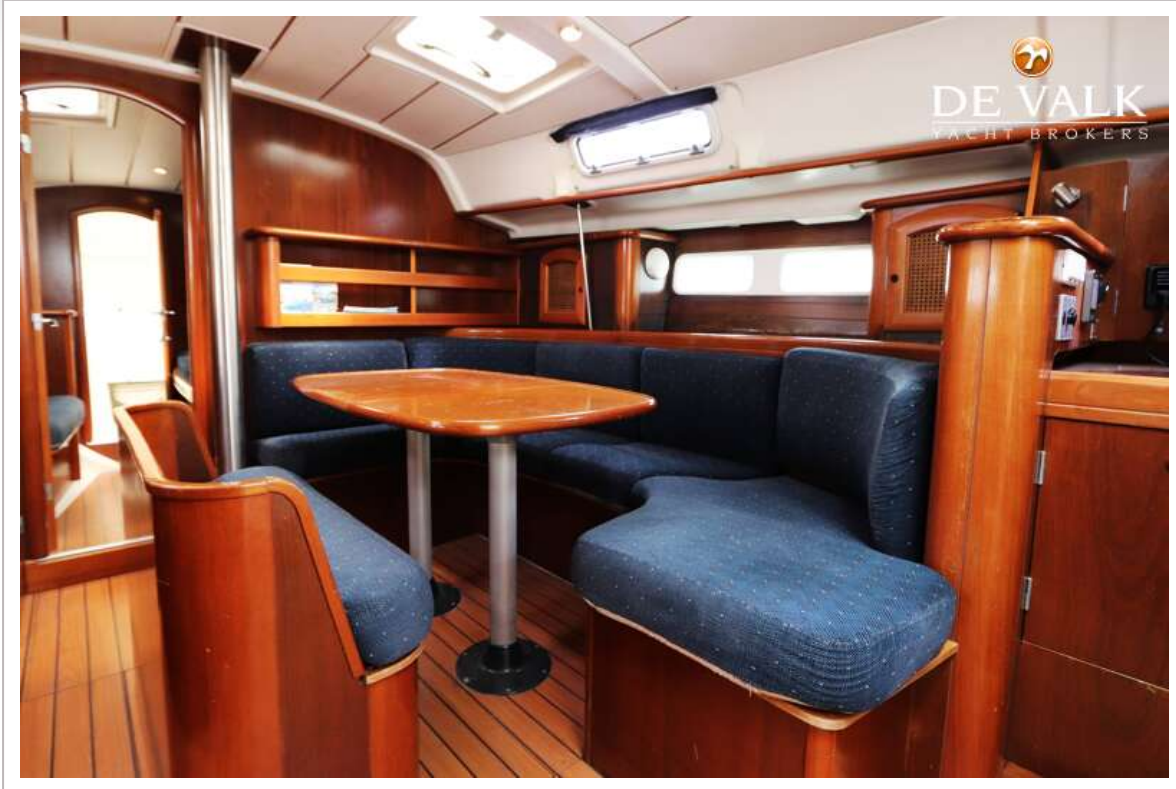
# BENETEAU OCEANIS 411 ELECTRIC



# BENETEAU OCEANIS 411 ELECTRIC



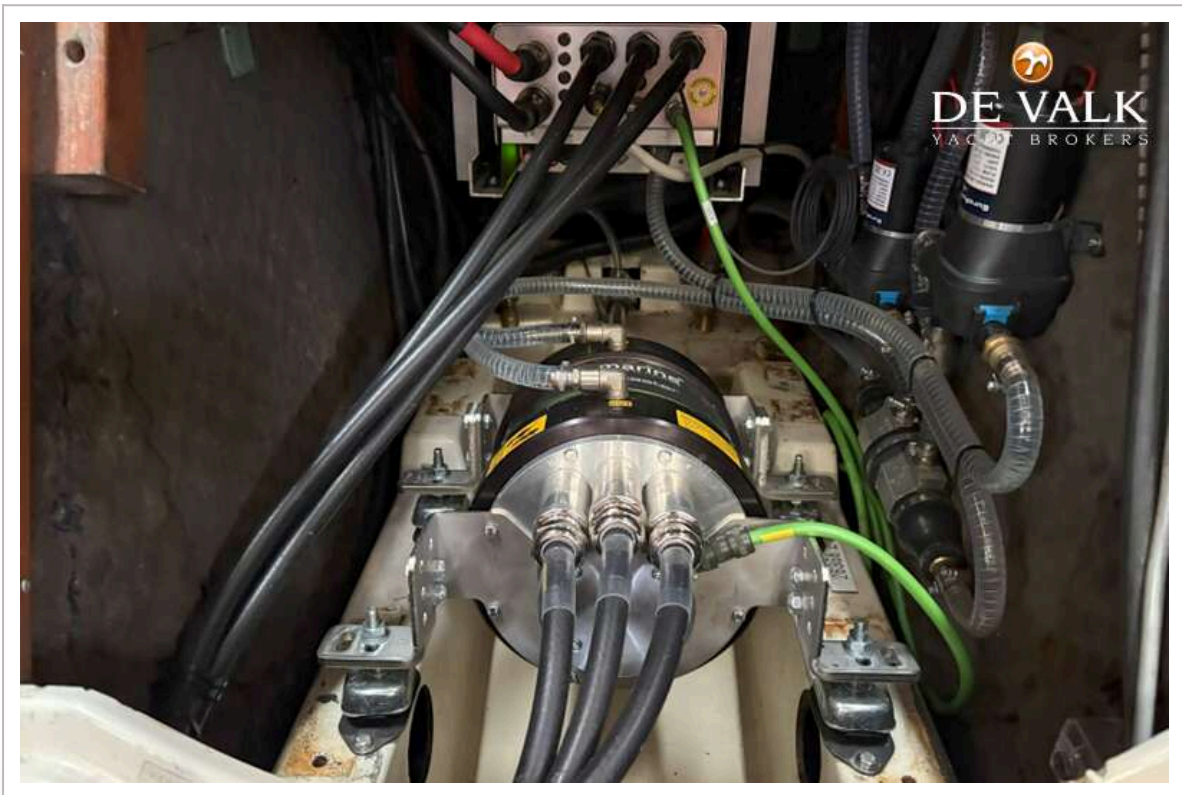
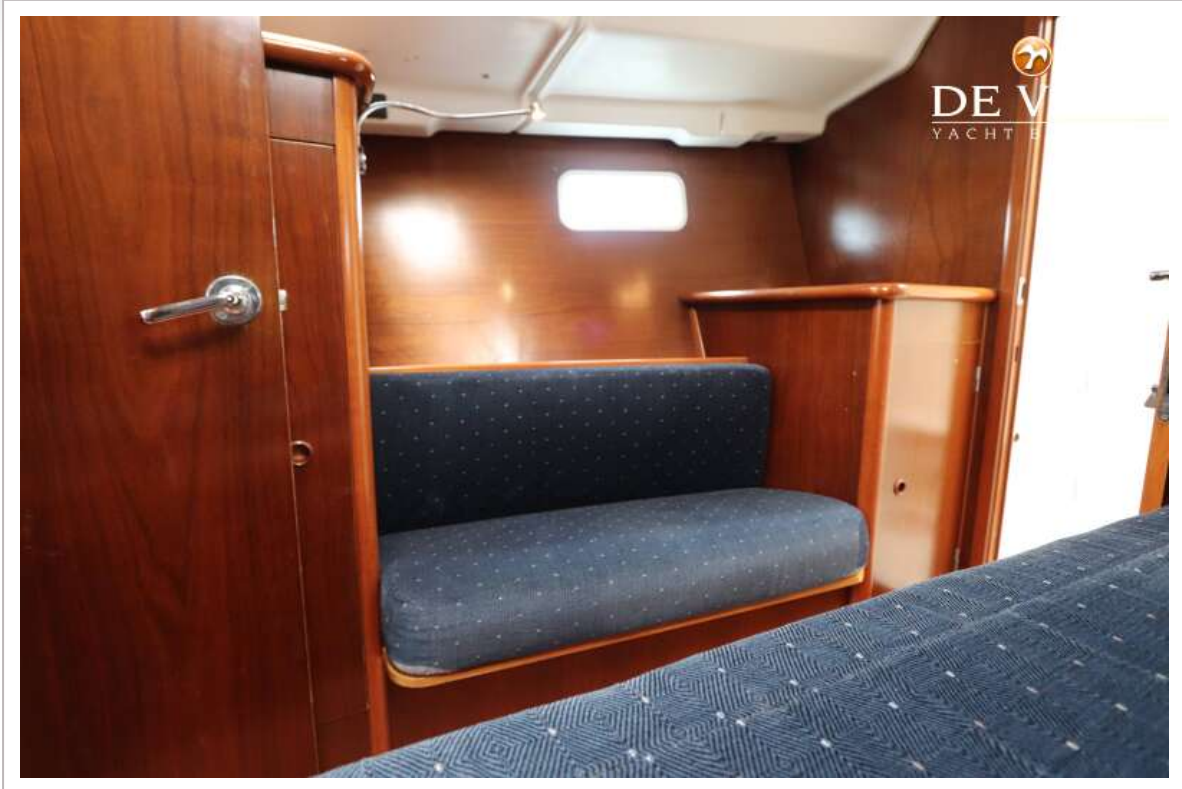
# BENETEAU OCEANIS 411 ELECTRIC



# BENETEAU OCEANIS 411 ELECTRIC



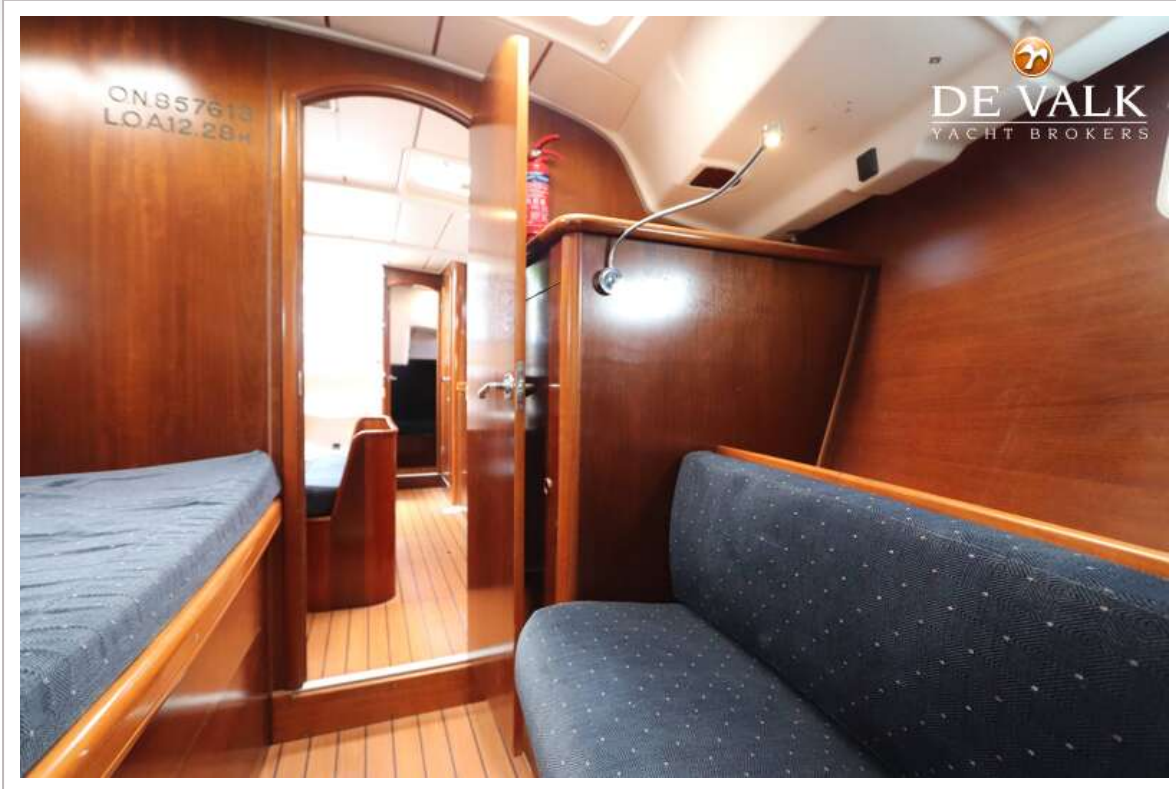
# BENETEAU OCEANIS 411 ELECTRIC



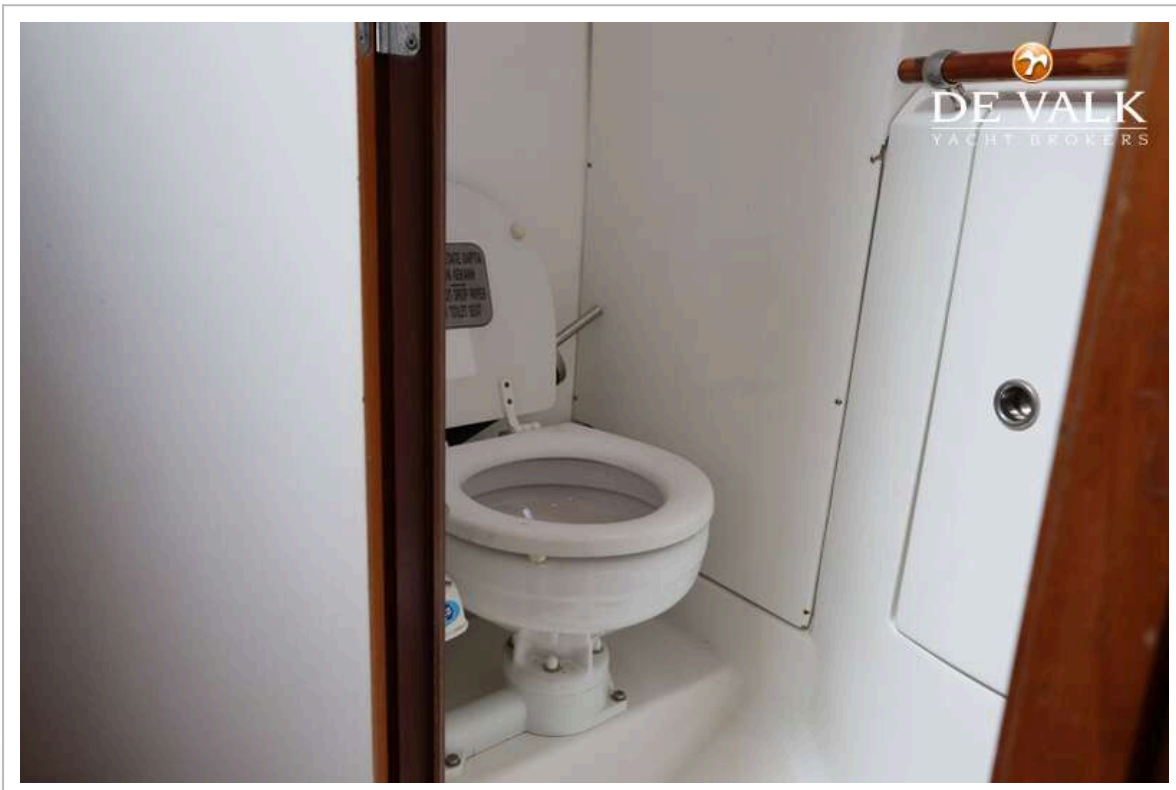
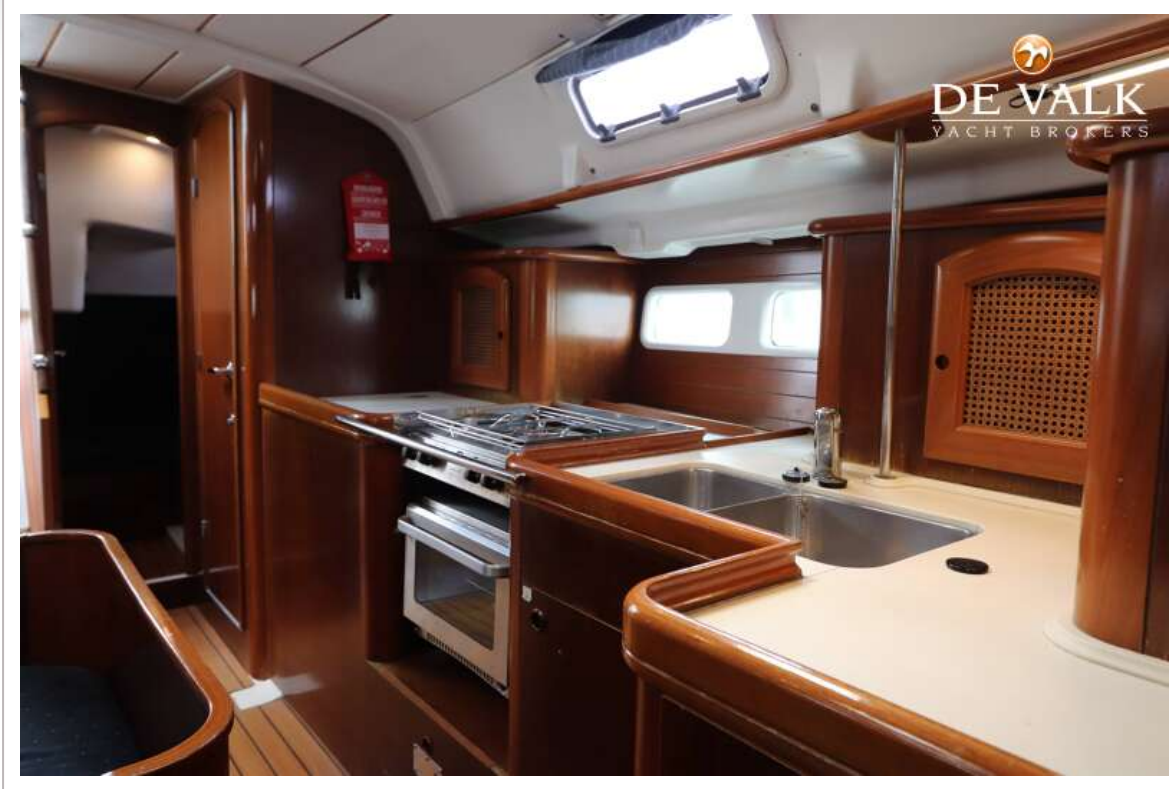
# BENETEAU OCEANIS 411 ELECTRIC



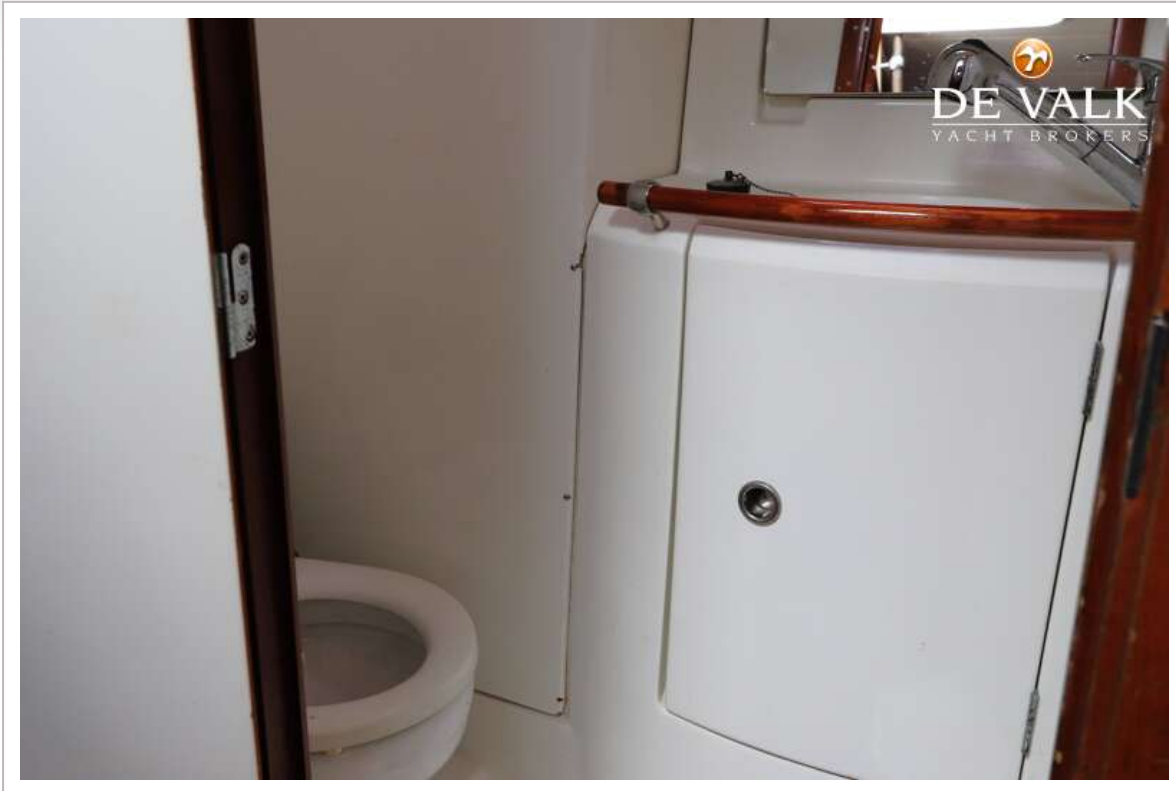
# BENETEAU OCEANIS 411 ELECTRIC



# BENETEAU OCEANIS 411 ELECTRIC



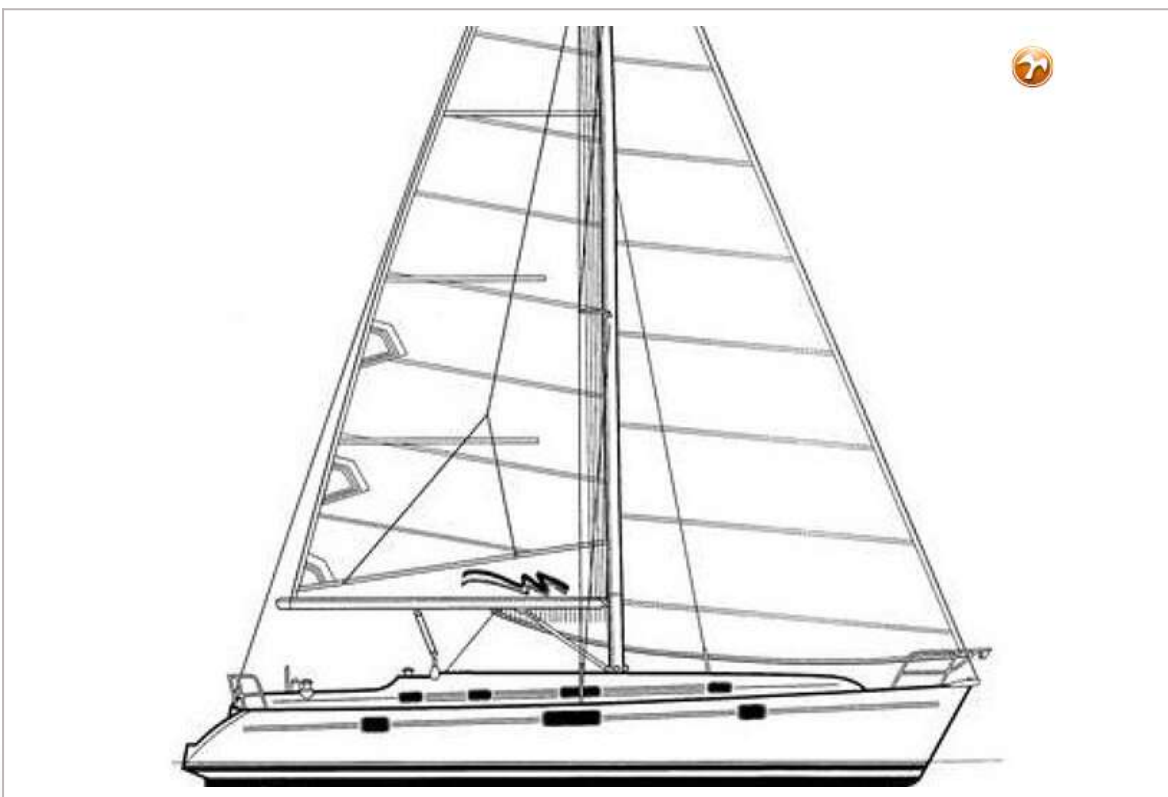
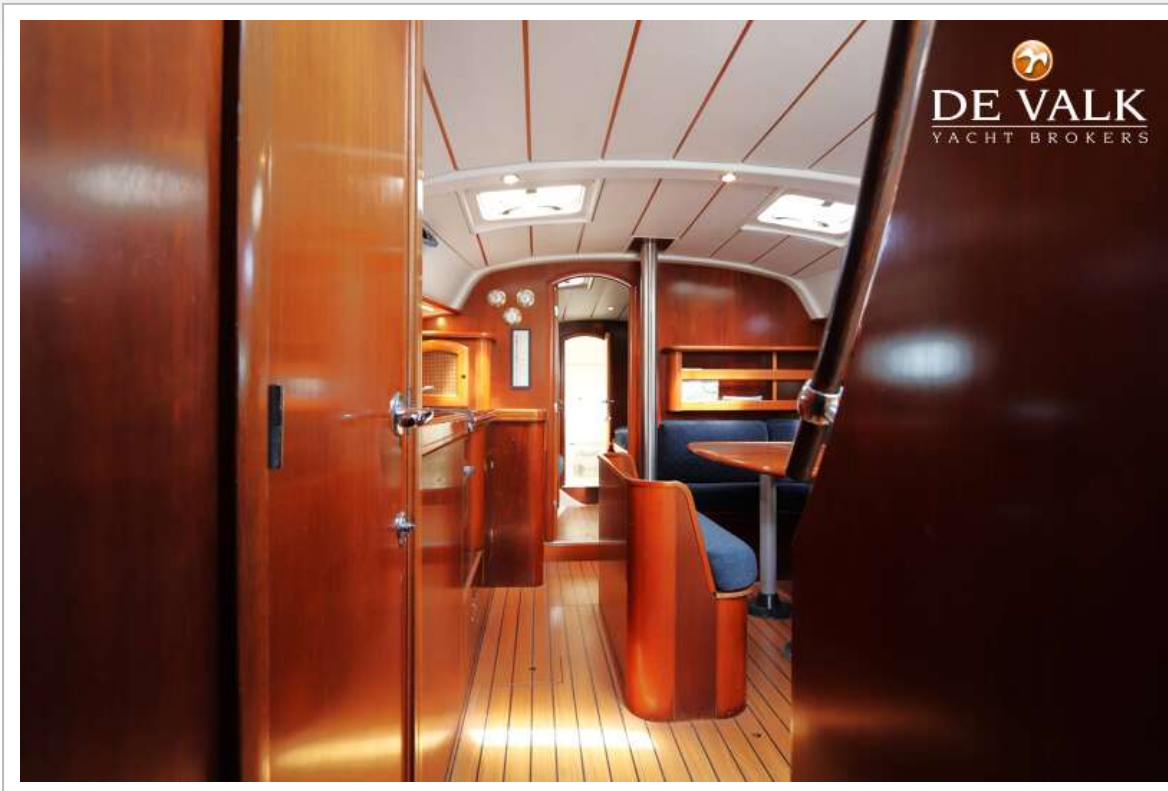
# BENETEAU OCEANIS 411 ELECTRIC



# BENETEAU OCEANIS 411 ELECTRIC



# BENETEAU OCEANIS 411 ELECTRIC



# BENETEAU OCEANIS 411 ELECTRIC

