



KOOPMANS 1150 VANGUARD



KOOPMANS 1150 VANGUARD

BROKER'S COMMENTS

A very neat steel built Koopmans 1150 vanguard in very good condition. She has proven to be very seaworthy by her owners. The center cockpit and raised aft deck offers a safe place on the ocean. With the large aft cabin she offers a sea of space inside for a 38ft yacht. A perfect live aboard for a couple that likes to do long distance cruising.

Reinoud Bicker Caarten

SPECIFICATIONS

Dimensions	11.50 x 3.50 x 1.70 (m)	Builder	Escher Jachtbouw
Built	1987	Cabins	2
Material	Steel	Berths	6
Engine(s)	1 x Yanmar 4JHE diesel	Hp/Kw	44.00 (hp), 32.38 (kw)
Asking price	€ 46.000 (VAT Paid)	Lying	contact Portugal

CONTACT

Sales office	De Valk Portugal	Telephone	+351 308 812321
Address	Edifício Administrativo - Ponta da Areia 8500 - 345 Portimão PT	E-mail	portugal@devalk.nl

DISCLAIMER

These particulars are given in good faith as supplied but cannot be guaranteed.



KOOPMANS 1150 VANGUARD

GENERAL

Model	KOOPMANS 1150 VANGUARD
Type	sailing yacht
LOA (m)	11,50
LWL (m)	9,70
Beam (m)	3,50
Draft (m)	1,70
Air draft (m)	15,50
Headroom (m)	1,95
Year built	1987
Builder	Escher Jachtbouw
Country	The Netherlands
Designer	Dick Koopmans
Displacement (t)	9,5
Ballast (tonnes)	3,4
CE norm	NA
Hull material	steel
Hull colour	off-white Blue stripe
Hull thickness (mm)	4
Hull shape	multi hard chine
Keel type	long keel
Superstructure material	steel
Superstructure (mm)	3
Deck plate thickness (mm)	4
Rubbing strake	steel
Deck material	steel
Deck finish	non-skid paint
Cockpit deck finish	non-skid paint
Antifouling (year)	2024
Window frame	aluminium
Window material	tempered glass



KOOPMANS 1150 VANGUARD

Deckhatch	3x
Portholes	4
Insulation	foam PIR
Fuel tank (litre)	380L
Level indicator (fuel tank)	Steel
Freshwater tank (litre)	2x350L
Wheel steering	cable steering
Emergency tiller	yes
More info on hull	Anchor locker renewed 2022
More info on paintwork	In good condition
Extra info	Winter cover included

ACCOMMODATION

Cabins	2
Berths	6
Interior	mahogany High quality, handmade by carpenter
Floor	wood
Open cockpit	Centre cockpit
Aft deck	yes
Heating	diesel ducted hot air Taylor
Navigation center	yes
Chart table	yes
Aft Cabin	yes
Dinette	yes
Convertible berth	2x
Galley	yes
Countertop	Formica
Sink	stainless steel Double
Cooker	calor gas 2 burners
Gas alarm	gas blocked by electric valve on gasbottle
Fridge	Efficient box in countertop



KOOPMANS 1150 VANGUARD

Manual and/or foot pump	Footpump in galley and head
Crockery	yes
Owners cabin	double bed Aft
Bed length (m)	2m x 1,6m
Bathroom	separate
Toilet	yes
Toilet system	vacuum Manual
Wash basin	at the toilet
Guest cabin 1	v-bed In bow
Bed length (m)	2m
Guest cabin 2	bunk bed 2 in Saloon
Bed length (m)	2m

MACHINERY

No of engines	1
Make	Yanmar
Type	4JHE
HP	44
kW	32.38
Fuel	diesel
Year installed	1987
Maximum speed (kn)	7
Cruising speed (kn)	5
Consumption (l/hr)	2
Range (nm)	1000
Engine cooling system	freshwater heat exchanger
Drive	shaft
Engine controls	electrical & bowden cable At helm and inside
Gearbox	HURTH
Engine controls	bowden cable At helm
Propeller type	fixed



Propeller blades	3
Propeller shaft material	stainless steel
Shaft lubrication	oilbath
Manual bilge pump	2x
Electric bilge pump	1x portable
Electrical installation	12v
Start battery	Open cell 2021
Service battery	2x AMG 75Ah new 2023
Battery monitor	Mastervolt BTM 3
Battery charger	Sterling 30A, 3channel
Inverter	Dometic 150W sinus
Wind generator	KISS 10 Amp
Solar panel	200W and 65W
Diode battery combiners	yes
Shorepower	with cable Automatic switch
Auto positioning system	AIS

NAVIGATION

Compass	Cassens Plath at wheel
Depth sounder	Nasa with new sensor 2015
Log	VDO Electronic
Windset	Available
VHF	Uniden DSC + Seavoice RT680
VHF handheld	yes
Autopilot	CPT on wheel
Wind vane steering install.	Windpilot
Radar	Raytheon SL 70, LCD in cockpit
GPS	GArcin 152
Plotter	On PC with Open CPN
Navtex	Nasa target Pro, antenna defect
Personal computer	2022 fanless with open CPN charts



PC connection	To GPS and Pactor modem
Electronic chart(s)	CM93
AIS transponder	Transmitter Raymarine 650 from 2021
Transmitter	Kenwood TS 50 + pactor3 modem
EPIRB	Out of date
Searchlight	yes

EQUIPMENT

Sprayhood	yes
Cockpit cover	In 3 separate parts
Bimini	Raincatcher with solar panel
Window cover	From 2016 in 4 parts for complete coverage
Cockpit cushions	yes
Cockpit table	Teak
Cockpit chairs	yes
Boarding ladder	yes
Anchor	Plastimo 25kg
Anchor chain	10mm galvanized steel, 60m
Anchor 2	Fortress Aft16kg aluminium
Anchor chain	10M steel + line
Windlass	manual SL 555, serviced 2025
Dinghy	inflatable 3D tender 2,8m
Outboard	Yamaha 2CMH
Davits	stainless steel
Deck crane	manual Used for small moped max: 100kg
Sea railing	stainless steel Very solid
Pushpit	yes
Life raft	yes
Life raft (pers)	yes
Last life raft survey	2024
Lifejackets	yes



KOOPMANS 1150 VANGUARD

Safety harness	yes
Horn	air pressure Manual
Fenders	10x
Mooring lines	yes
Tools	Large collection
Radio-cd player	yes
Speakers in salon	yes
Clock - barometer	Digital
Fire extinguisher	3x

RIGGING

Standing rigging	wire Stainless steel , above grade
Brand mast	Isomat
Material mast	aluminium
Mainsail	31m2 New Quantum 2025
Mainsail cover	yes
Jib	good condition Quantum 2007 13m2
Booster	70m2 Cruising shute



KOOPMANS 1150 VANGUARD



KOOPMANS 1150 VANGUARD



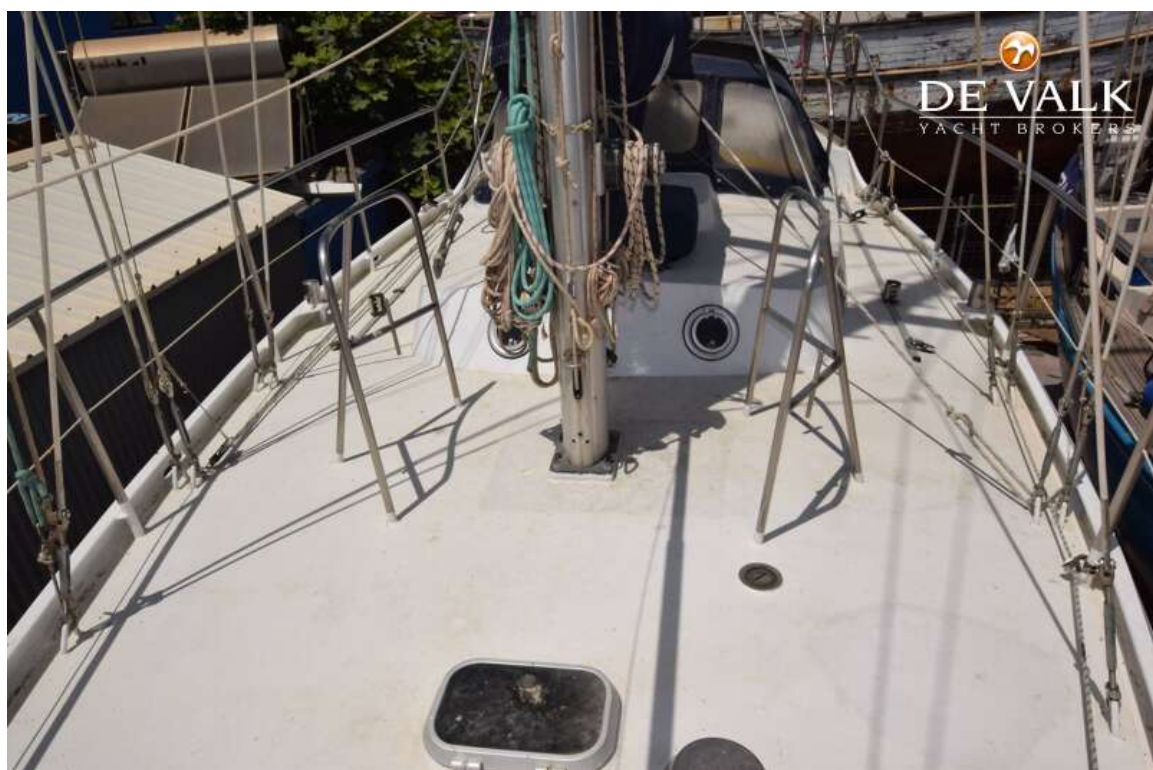
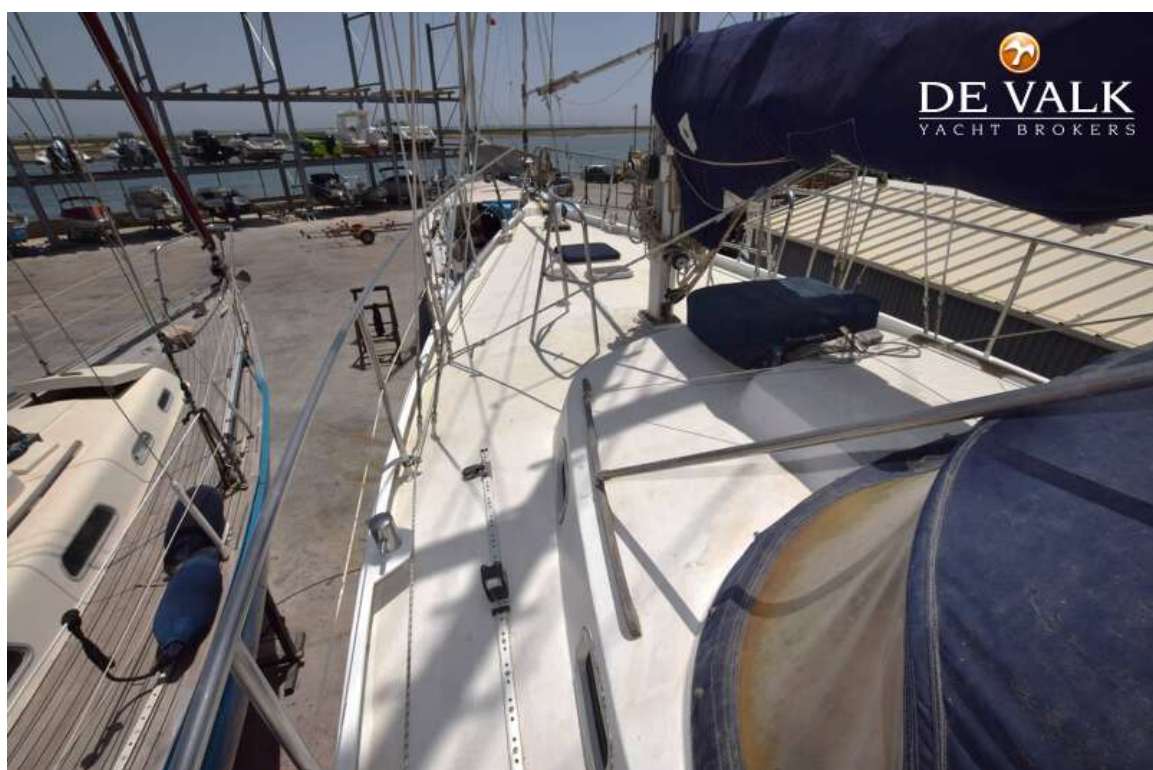
KOOPMANS 1150 VANGUARD



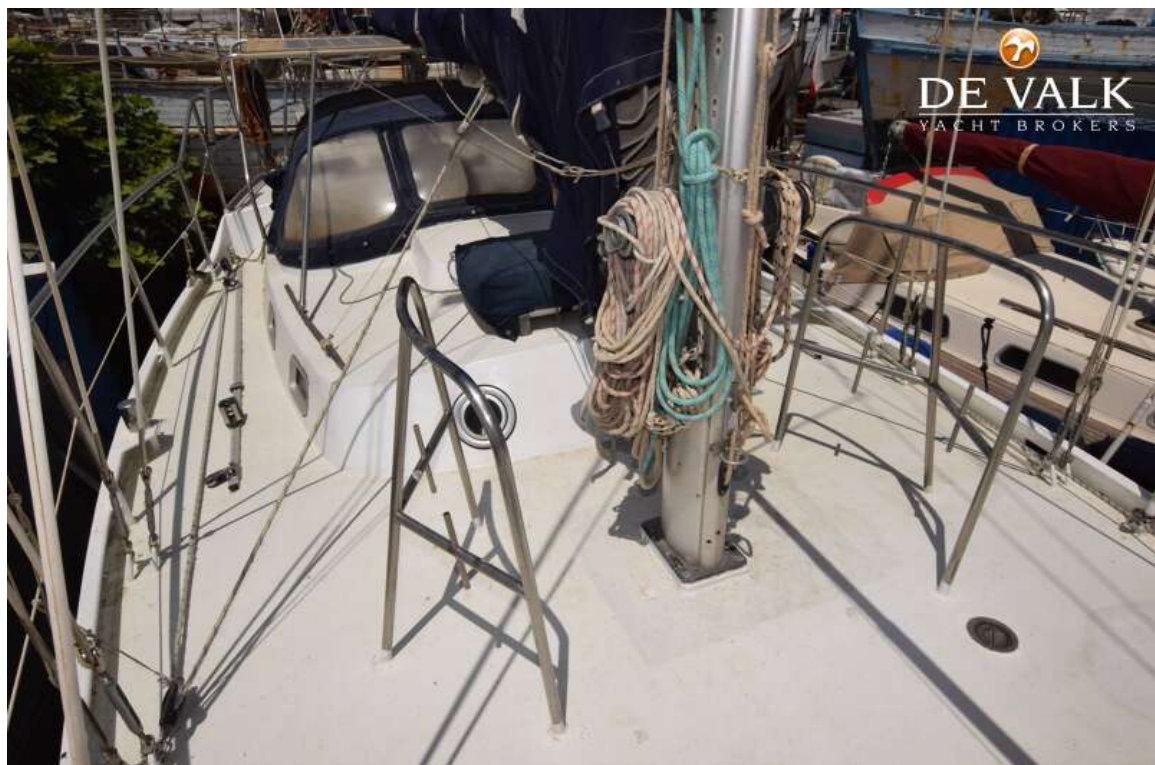
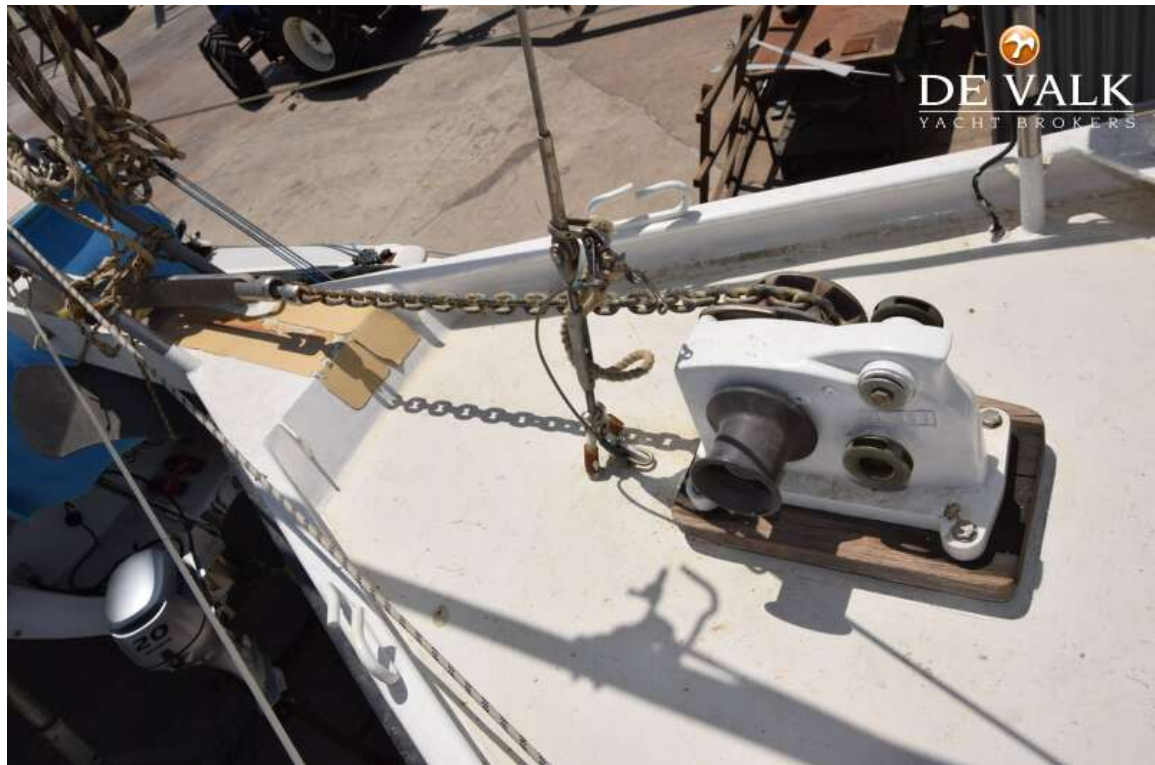
KOOPMANS 1150 VANGUARD



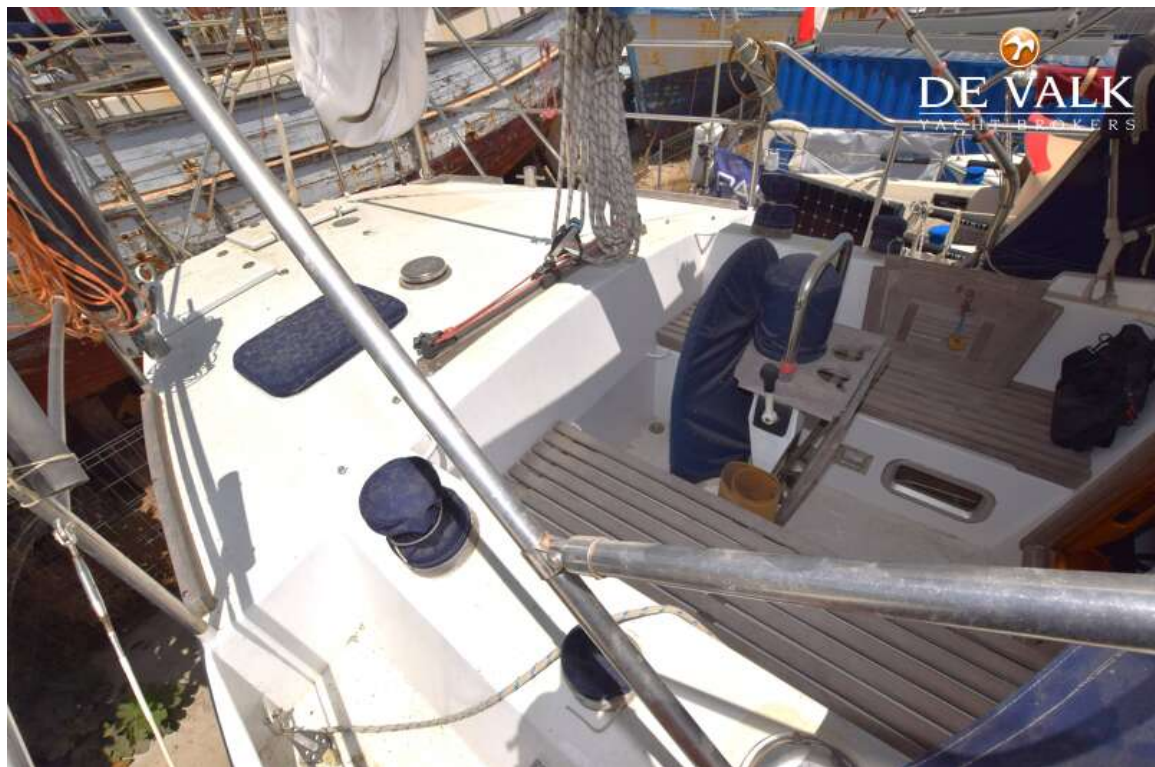
KOOPMANS 1150 VANGUARD



KOOPMANS 1150 VANGUARD



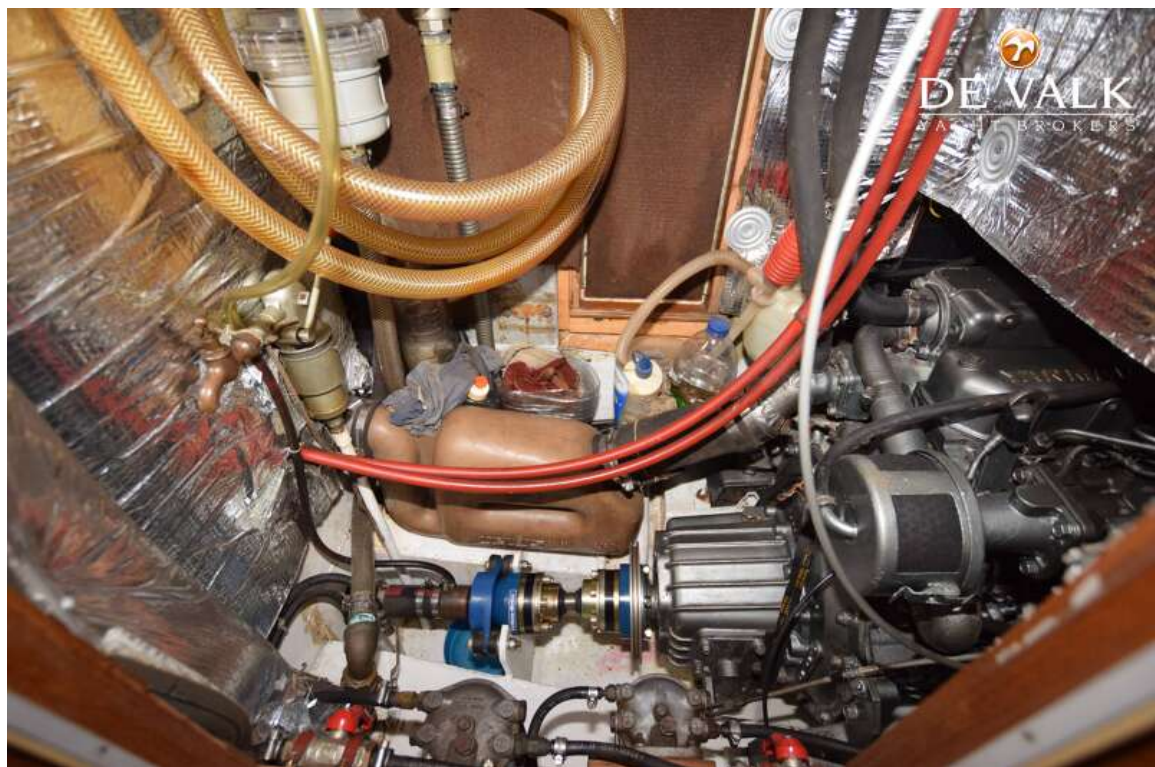
KOOPMANS 1150 VANGUARD



KOOPMANS 1150 VANGUARD



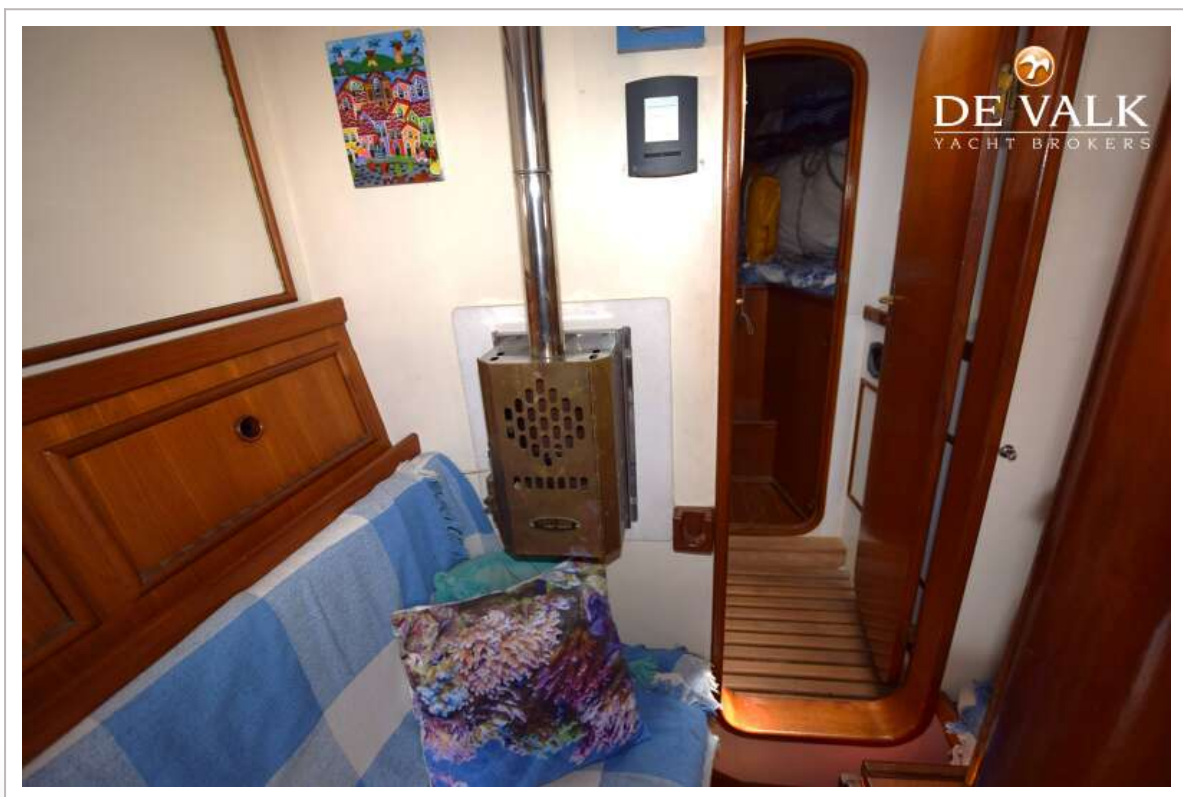
KOOPMANS 1150 VANGUARD

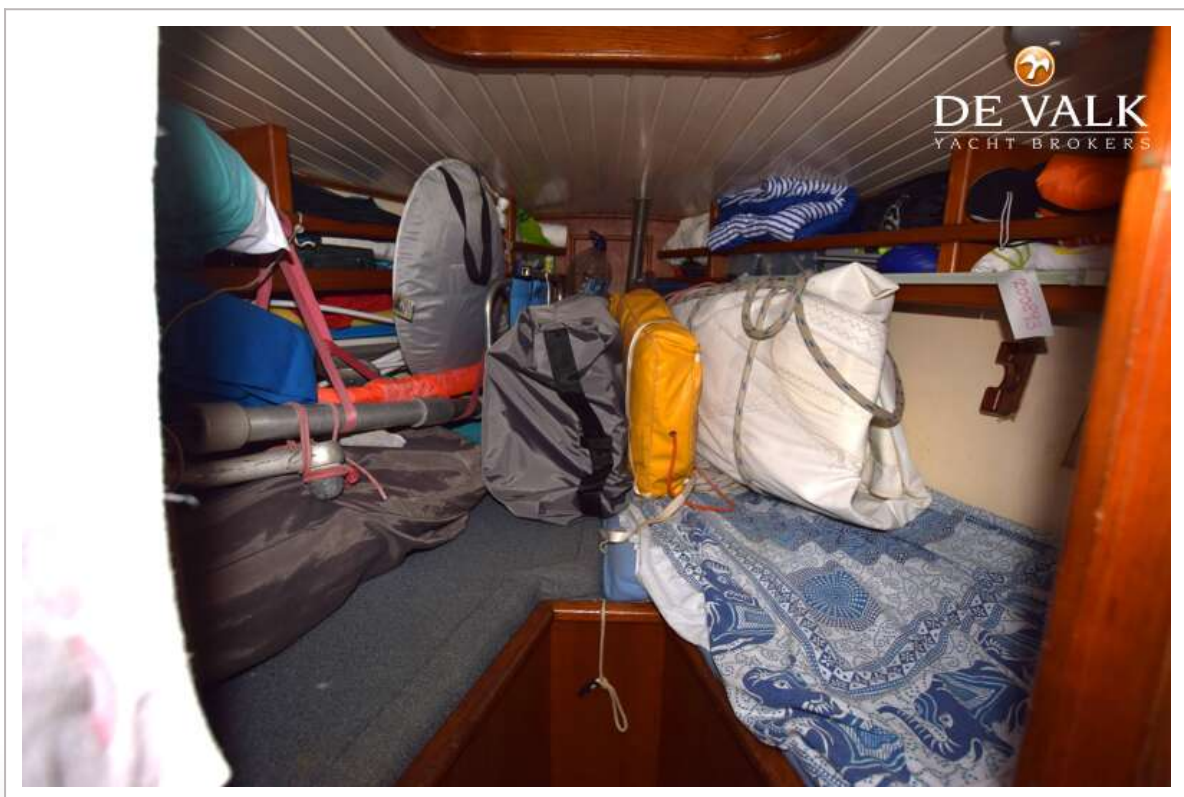
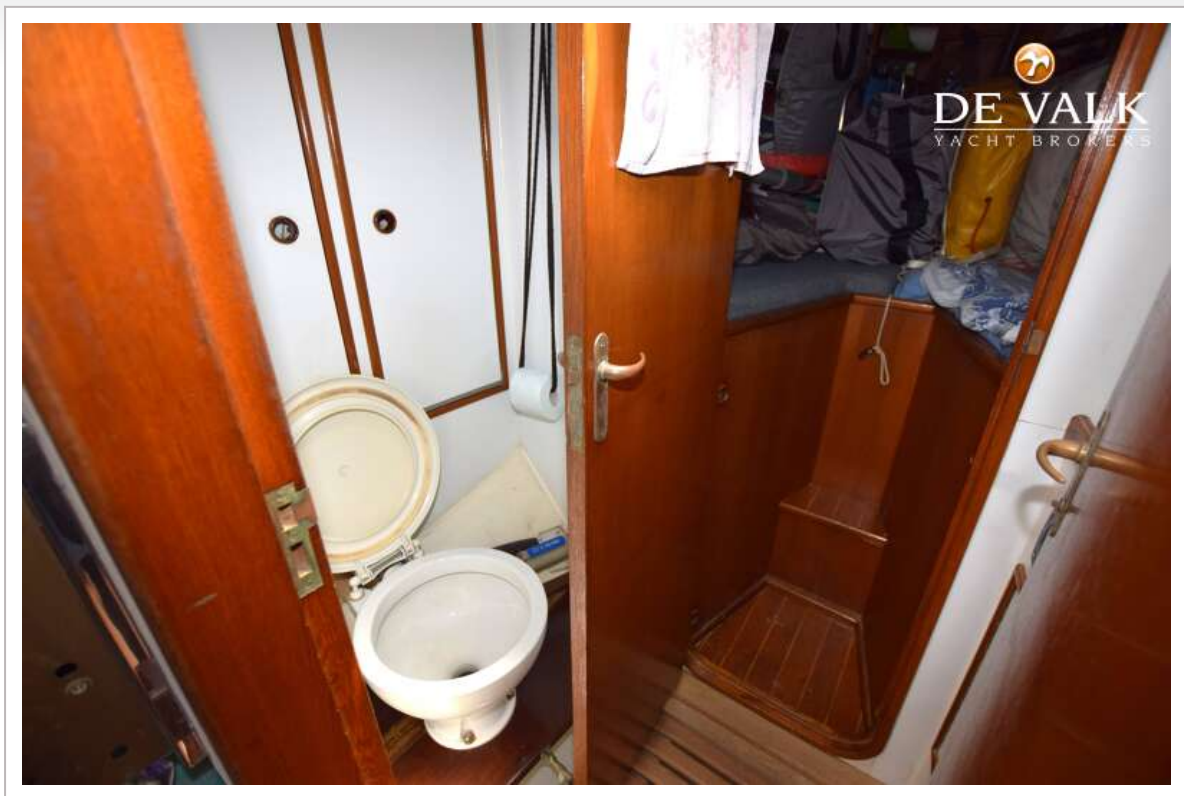


KOOPMANS 1150 VANGUARD



KOOPMANS 1150 VANGUARD





KOOPMANS 1150 VANGUARD

