



## HALLBERG RASSY 31



# HALLBERG RASSY 31

## BROKER'S COMMENTS

Have you always dreamed of owning a quality sailing yacht like a Hallberg-Rassy ? "Sailaway" is a fine example of one of the best Hallberg-Rassy models ever designed and built. This Hallberg-Rassy 31 boasts new sails and rigging and is extensively equipped with many recent upgrades. She has been well maintained, with a clean and inviting interior. The current owners have invested considerable time, work, and care into her upkeep. Now ready for viewing and inspection at our sales harbour in Hindeloopen.

*Johan Nooitgedagt*

## SPECIFICATIONS

<b>Dimensions</b>	9.62 x 3.30 x 1.71 (m)	<b>Builder</b>	Rassy Varvt
<b>Built</b>	1993	<b>Cabins</b>	2
<b>Material</b>	GRP	<b>Berths</b>	6
<b>Engine(s)</b>	1 x Volvo Penta MD2002 B868612 diesel	<b>Hp/Kw</b>	19.00 (hp), 13.98 (kw)
<b>Asking price</b>	€ 58.000 (VAT Paid)	<b>Lying</b>	contact Hindeloopen

## CONTACT

<b>Sales office</b>	De Valk Hindeloopen B.V.	<b>Telephone</b>	+31 514 52 40 00
<b>Address</b>	Oosterstrand 1 8713 JS Hindeloopen NL	<b>E-mail</b>	hindeloopen@devalk.nl

## DISCLAIMER

These particulars are given in good faith as supplied but cannot be guaranteed.



## GENERAL

Model	HALLBERG RASSY 31
Type	sailing yacht
LOA (m)	9,62
LWL (m)	8,26
Beam (m)	3,30
Draft (m)	1,71
Air draft (m)	14,80
Headroom (m)	1,90
Year built	1993
Builder	Rassy Varvt
Country	Sweden
Designer	German Frers
Displacement (t)	4,5
Ballast (tonnes)	lead 2
Hull material	GRP
Hull colour	white
Hull shape	round-bilged
Keel type	fin keel
Superstructure material	GRP
Rubbing strake	stainless steel
Deck material	GRP
Deck finish	teak
Superstructure deck finish	non-skid moulded in
Cockpit deck finish	teak
Antifouling (year)	2025
Dorades	2x
Window frame	yes
Window material	tempered glass
Deckhatch	2x
Fuel tank (litre)	stainless steel 60



Level indicator (fuel tank)	2020 Simarine Pico Display
Freshwater tank (litre)	stainless steel 190
Level indicator (freshwater)	2020 Simarine Pico Display
Tiller	yes
More info on hull	2024 entire hull and superstructure polished

## ACCOMMODATION

Cabins	2
Berths	6
Interior	mahogany
Floor	teak and holly
Open cockpit	yes
Saloon	yes
Headroom saloon (m)	1,90
Heating	diesel ducted hot air 2024 Webasto Airtop Evo 40D fitted
Galley	yes
Countertop	wood
Sink	stainless steel
Cooker	calor gas 2 burner
Fridge	yes
Hot water system	220V + engine 2019 Quick 20L boiler
Water pressure system	2019
Owners cabin	v-bed Front
Bed length (m)	2,12
Wardrobe	shelves
Bathroom	shared
Toilet	shared
Toilet system	manual 2020 Jabsco
Wash basin	at the toilet
Guest cabin 1	double bed Rear
Bed length (m)	2,25



**Wardrobe**

hanging and shelves

## MACHINERY

**No of engines**

1

**Make**

Volvo Penta

**Type**

MD2002 B868612

**HP**

19

**kW**

13.98

**Fuel**

diesel

**Maximum speed (kn)**

5

**Cruising speed (kn)**

4

**Consumption (l/hr)**

2

**Engine hours**

1798

**Engine cooling system**

freshwater heat exchanger

**Drive**

sail-drive

**Saildrive seal**

2017

**Engine controls**

bowden cable

**Gearbox**

mechanical

**Exhaust**

watercooled

**Propeller type**

folding

**Propeller blades**

3

**Manual bilge pump**

yes

**Batteries**

2

**Start battery**

2020 Varta LFD75 75Ah

**Service battery**

2023 Varta LFD140 140Ah

**Battery monitor**

2020 Simarine Pico Batt monitor, Simarine SC501 Digital shunt

**Battery charger**

2023 Victron Blue Smart IP22

## NAVIGATION

**Compass**

2021 B&G Precision 9

**Multi control display**

2019 B&G DST810



Depth sounder	2019 B&G DST810
Log	2019 B&G DST810
Windset	2019 B&G WS310
Repeater	2021 2x B&G Triton2 display
VHF	2019 B&G V90S with AIS
Autopilot	2022 B & G Triton controller
Rudder angle indicator	yes
Plotter	2021 B&G Vulcan 9 & navionics
Electronic chart(s)	2021 Navionics NL, UK, IE.
AIS transponder	2019
AIS transceiver	2019
Navigation lights	2021 Lopolight 3
Extra info	2024 Philippi instrument panel

## EQUIPMENT

Fixed windscreen	yes
Sprayhood	2020 Original Hallberg Rassy
Cockpit chairs	2x comfort seats
Boarding ladder	stainless steel
Bow ladder	yes
Anchor	Bruce
Sea railing	wire
Grab rail (superstructure)	wood
Pushpit	yes
Pulpit	yes
Fenders	yes
Mooring lines	2022
Tools	yes
Radio	yes
Speakers in salon	yes
Fire extinguisher	2018



## RIGGING

Rigging	sloop 2019
Standing rigging	wire 2022
Brand mast	Seldén
Material mast	aluminium
Spreaders	yes
Mainsail	2022 Uk de Vries
Mainsail cover	2022
Battcars	yes
Genoa	2020 Sailservice Germany
Genoa furler	2022 Furlex 104-S
Reefing System	quick-one-line-reefing
Backstay adjuster	tackle
Boomvang	mechanical and tackle 2019 Selden Rodkicker 10S
Genoa sheetwinches	Lewmar 2 x 40ST
Halyard winches	Lewmar 2 x 16
Spi-pole	aluminium



# HALLBERG RASSY 31

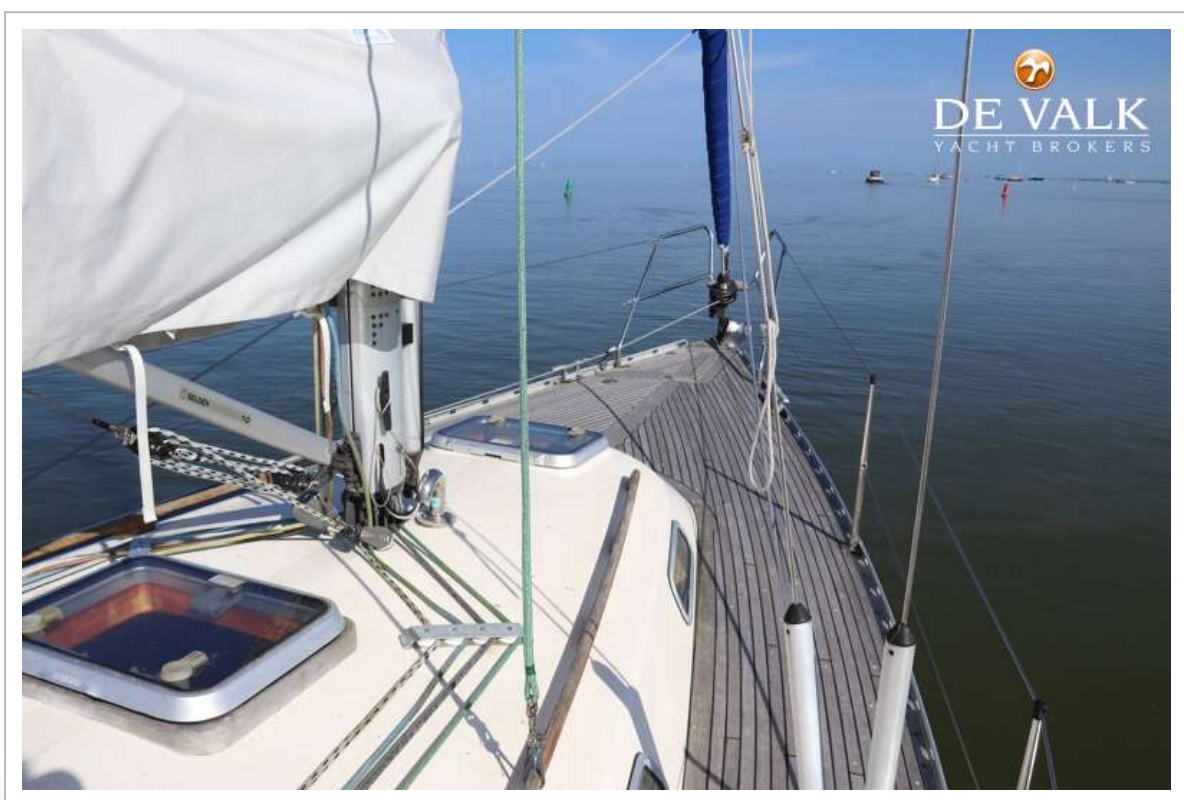




# HALLBERG RASSY 31



# HALLBERG RASSY 31



# HALLBERG RASSY 31





# HALLBERG RASSY 31



# HALLBERG RASSY 31



# HALLBERG RASSY 31

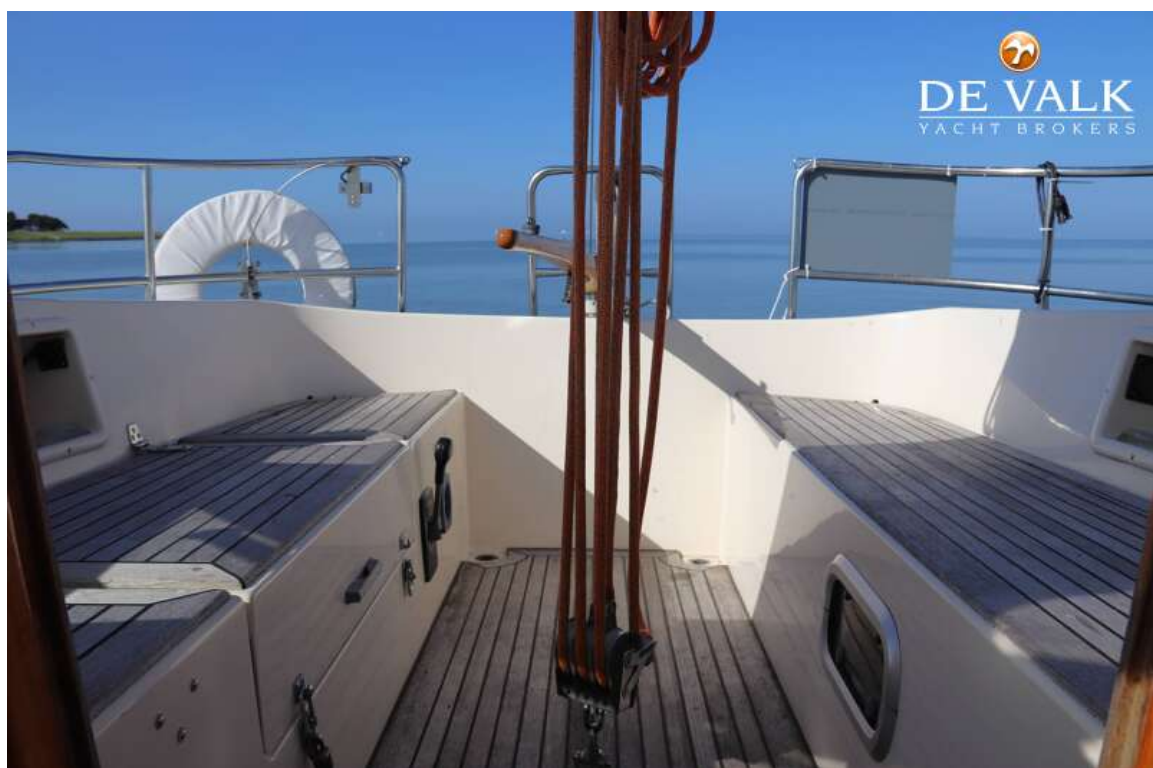




# HALLBERG RASSY 31



# HALLBERG RASSY 31

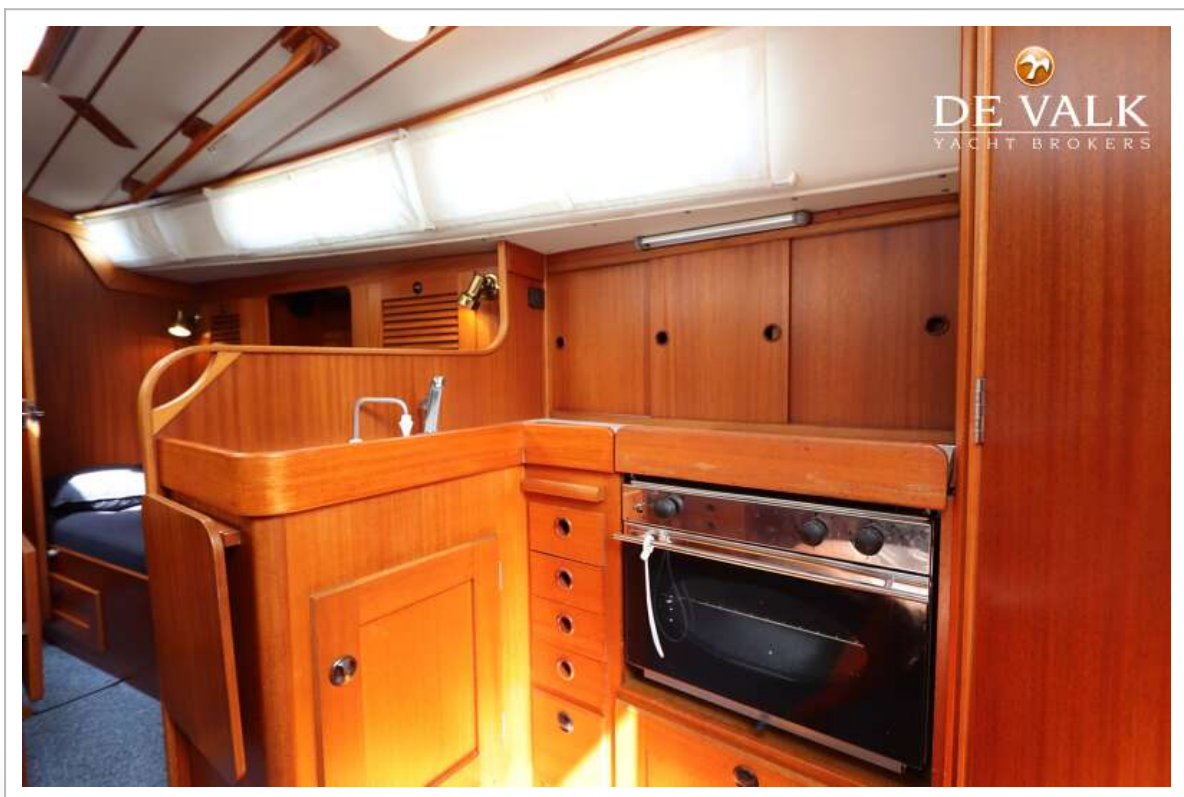




# HALLBERG RASSY 31



# HALLBERG RASSY 31

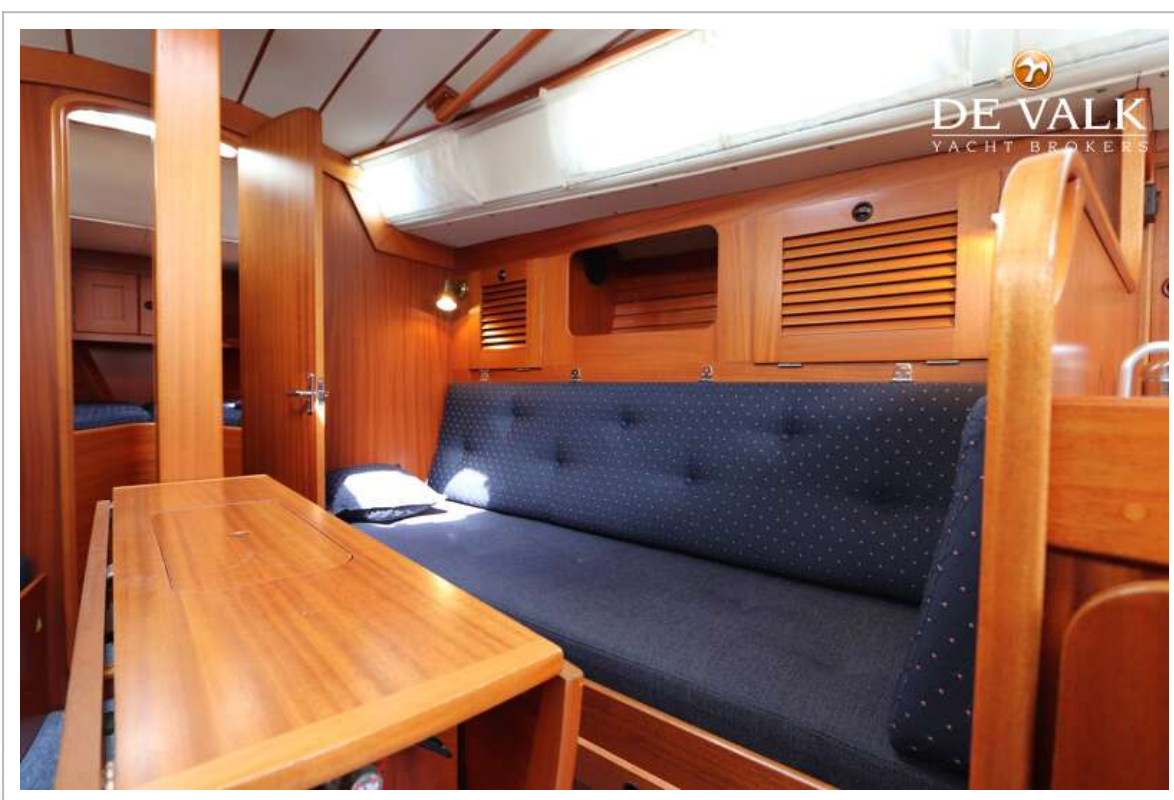




# HALLBERG RASSY 31



# HALLBERG RASSY 31

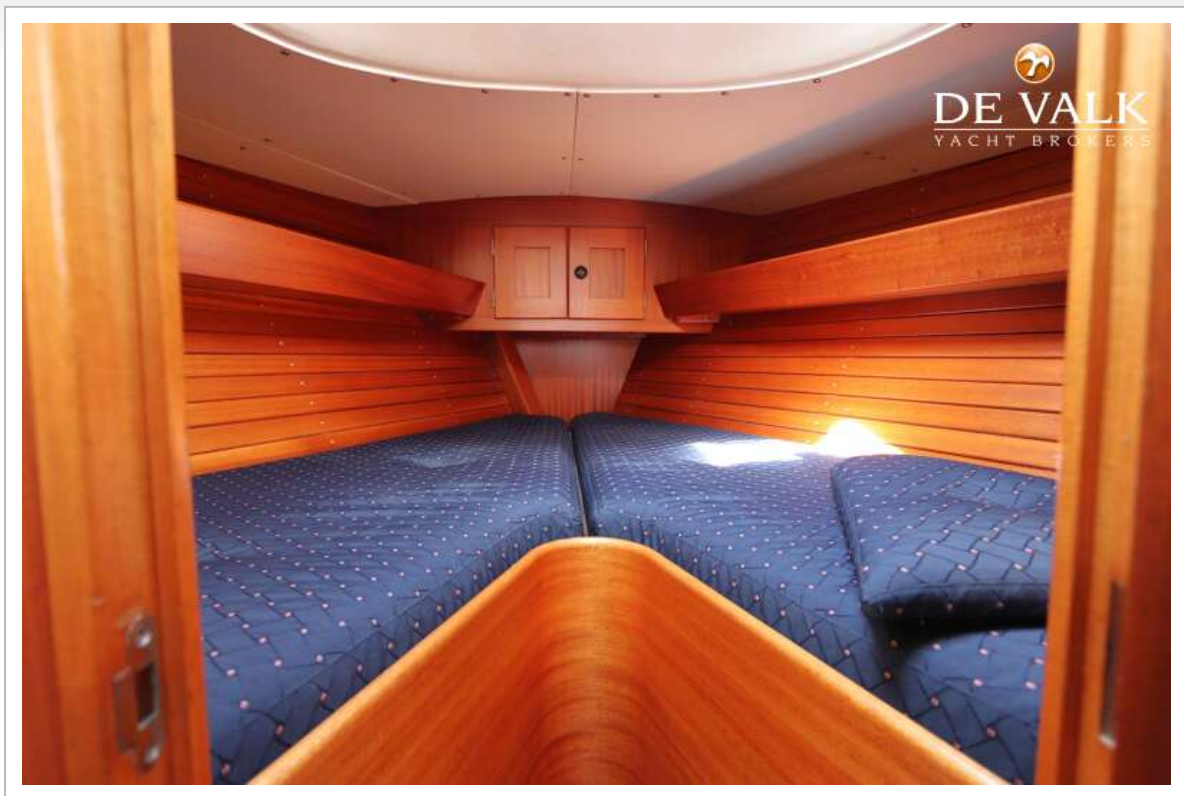




# HALLBERG RASSY 31

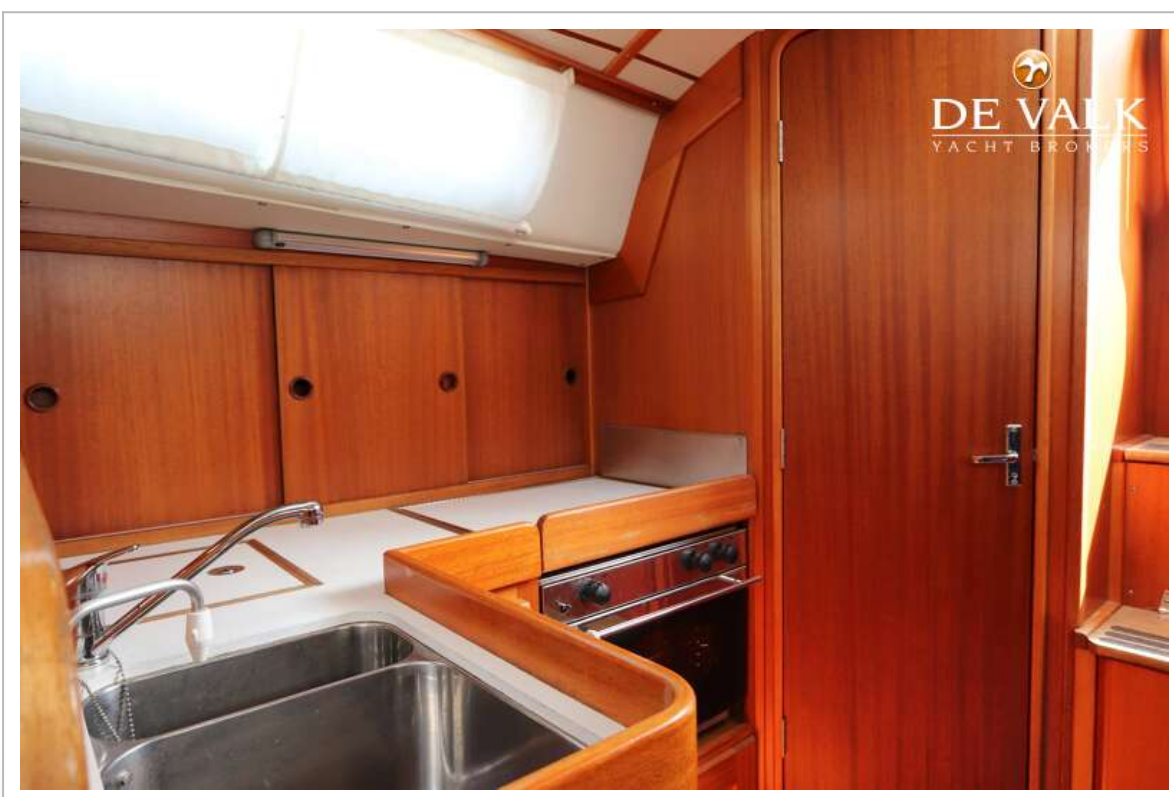


# HALLBERG RASSY 31





# HALLBERG RASSY 31

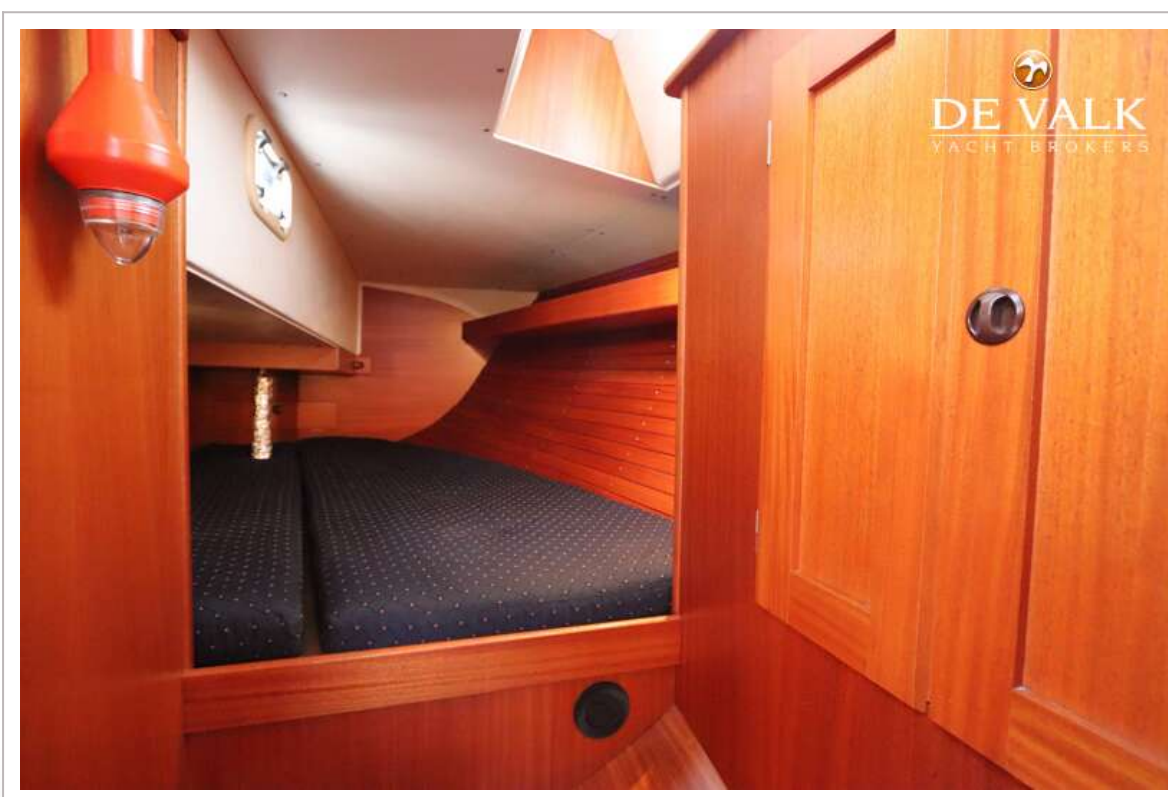


# HALLBERG RASSY 31





# HALLBERG RASSY 31



# HALLBERG RASSY 31

