



DE VALK  
YACHT BROKERS



CONTEST 35S



DE VALK  
YACHT BROKERS

## BROKER'S COMMENTS

The Contest 35 Sy AJA is a proven offshore cruiser from renowned Dutch builder Conyplex, with timeless lines and a solid reputation. Well equipped for extended cruising, she features a reliable Volvo Penta engine (2016), upgraded rigging, windvane steering, solar and wind power, and a comprehensive Raymarine setup. Lovingly maintained and in the same ownership since 2009, she offers safety, comfort, and self-sufficiency for serious sailors. VAT paid and ready to sail. A capable yacht with a strong pedigree.

*Sofia Iliia-Salvanou*

## SPECIFICATIONS

<b>Dimensions</b>	10.90 x 3.52 x 1.90 (m)	<b>Builder</b>	Conyplex b.v.
<b>Built</b>	1989	<b>Cabins</b>	2
<b>Material</b>	GRP	<b>Berths</b>	6
<b>Engine(s)</b>	1 x VOLVO PENTA D2-40 diesel	<b>Hp/Kw</b>	40.00 (hp), 29.44 (kw)
<b>Asking price</b>	€ 58.000 (VAT Paid)	<b>Lying</b>	at sales office

## CONTACT

<b>Sales office</b>	De Valk Corfu	<b>Telephone</b>	(+30) 6948681503
<b>Address</b>	New Port of Corfu, near Gouvia Marina 490 83 Corfu GR	<b>E-mail</b>	corfu@devalk.nl

## DISCLAIMER

These particulars are given in good faith as supplied but cannot be guaranteed.



## GENERAL

<b>Model</b>	CONTEST 35S
<b>Type</b>	sailing yacht
<b>LOA (m)</b>	10,90
<b>LWL (m)</b>	9,30
<b>Beam (m)</b>	3,52
<b>Draft (m)</b>	1,90
<b>Headroom (m)</b>	1,90
<b>Year built</b>	1989
<b>Launched</b>	1989
<b>Builder</b>	Conyplex b.v.
<b>Country</b>	The Netherlands
<b>Designer</b>	Dick Zaal
<b>Displacement (t)</b>	8,42
<b>Gross tonnage</b>	8
<b>Net tonnage</b>	2
<b>Hull material</b>	GRP
<b>Hull colour</b>	white
<b>Fuel tank (litre)</b>	120 liters, monitored + 3x 20-liter jerrycans
<b>Freshwater tank (litre)</b>	stainless steel (2x120 liters), with float and monitor
<b>Blackwater tank (litre)</b>	30
<b>Wheel steering</b>	With cover
<b>Emergency tiller</b>	Stainless steel

## ACCOMMODATION

<b>Cabins</b>	2
<b>Berths</b>	6
<b>Saloon</b>	Upholstery of salon benches (dark blue) replaced Dec. 2014
<b>Heating</b>	Webasto heater Airtop Evo 3900
<b>Chart table</b>	yes
<b>Aft Cabin</b>	yes



Dining room	yes
Dinette	yes
Dinette to convert into berth	yes
Galley	yes
Countertop	yes
Sink	yes
Cooker	yes
Oven	ENO 2-burner gas stove Grand Large (2020)
Fridge	yes
Hot water system	Quick boiler (20 liters) 1200W + switch
Kettle	yes
Owners cabin	double bed
Wardrobe	yes
Bathroom	separate
Toilet	separate
Toilet system	manual Jabsco
Wash basin	in the bathroom
Shower	yes
Guest cabin 1	double bed With extra wash basin
Wardrobe	yes

## MACHINERY

No of engines	1
Make	VOLVO PENTA
Type	D2-40
HP	40
kW	29.44
Fuel	diesel
Year installed	2016
Drive	shaft
Propeller blades	3



<b>Propeller shaft material</b>	stainless steel Replaced March 2024
<b>Manual bilge pump</b>	yes
<b>Electric bilge pump</b>	yes
<b>Batteries</b>	yes
<b>Start battery</b>	75Ah 2022
<b>Service battery</b>	3x120Ah New Sept. 2025 (not Lithium but standard)
<b>Battery monitor</b>	Victron BMV-600s 2013
<b>Battery charger/inverter</b>	Victron EasyPlus 12/1600/70 replaced 2019
<b>Wind generator</b>	Superwind 350 + Shutoff switch
<b>Solar panel</b>	Victron: 1x130W + 2x110W
<b>Diode battery combiners</b>	Victron Cyrix 2013
<b>Insulation transformer</b>	Victron 2000
<b>Watermaker</b>	Katadyn, Power Survivor 40E (Bought but not connected)

## NAVIGATION

<b>Depth sounder</b>	Raymarine
<b>Windset</b>	Raymarine
<b>VHF</b>	Icom IC-M 323G (incl.GPS)
<b>VHF handheld</b>	Icom M91D
<b>Autopilot</b>	Raymarine SPX5 (2010) needs inspection
<b>Wind vane steering install.</b>	(2016), barely used
<b>Plotter</b>	Raymarine chartplotter c95 (2016)
<b>AIS transponder</b>	Raymarine
<b>Radio receiver</b>	Icom IC-7200 SSB + ground plate
<b>Navigation lights</b>	yes
<b>Extra info</b>	Below-deck autopilot Jefa drive unit Type 1, Raymarine EV200

## EQUIPMENT

<b>Sprayhood</b>	2017
<b>Bimini</b>	2017 + removable side panels
<b>Boarding ladder</b>	yes



<b>Gangway</b>	(needs to be installed)
<b>Deck shower</b>	Plastimo
<b>Anchor</b>	Rocna 20kg
<b>Anchor chain</b>	Galvanized - 8mm - 60m
<b>Anchor 2</b>	CQR Plough 18kg
<b>Windlass</b>	electrical Lewmar + Remote control (Lofrans)
<b>Dinghy</b>	inflatable Zodiac 2,70m
<b>Outboard</b>	Yamaha 4HP (needs inspection)
<b>Sea railing</b>	+ new stern railing with bracket
<b>Life raft</b>	yes
<b>Life raft (pers)</b>	4
<b>Last life raft survey</b>	2017
<b>Safety lines on deck</b>	yes
<b>Radar reflector</b>	yes
<b>Fenders</b>	yes
<b>Radio</b>	Built-in Kenwood
<b>Cockpit speakers</b>	2 (2016)
<b>Speakers in salon</b>	2 (2016)
<b>Extra info</b>	All lighting is LED

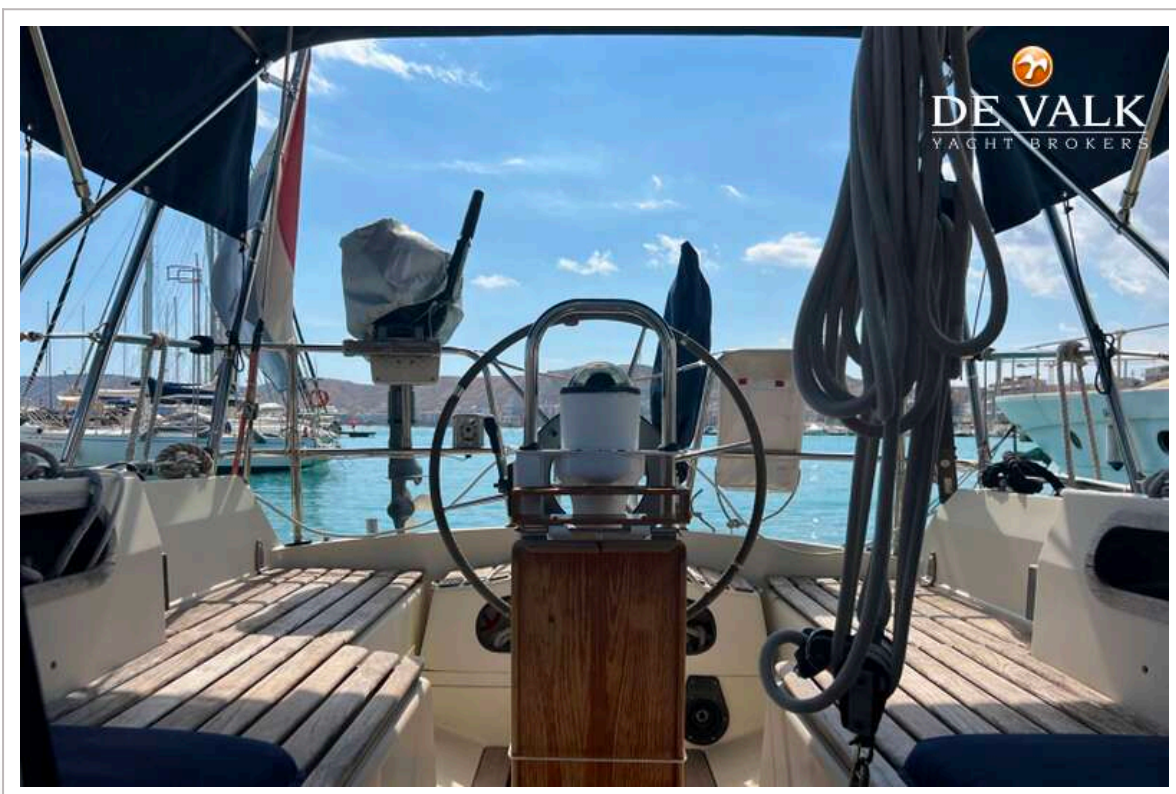
## RIGGING

<b>Standing rigging</b>	Replaced in 2016/2017
<b>Brand mast</b>	Seldén + tri-color top light
<b>Material mast</b>	aluminium
<b>Mainsail</b>	23,9 sq m
<b>Genoa</b>	33 sq m
<b>Genoa furler</b>	Furlex
<b>Gennaker</b>	Momentum
<b>Genoa sheetwinches</b>	Self-tailing Lewmar EVO
<b>Extra info</b>	Removable inner forestay - Navtec backstay tensioner
<b>Extra info</b>	Foldable mast steps

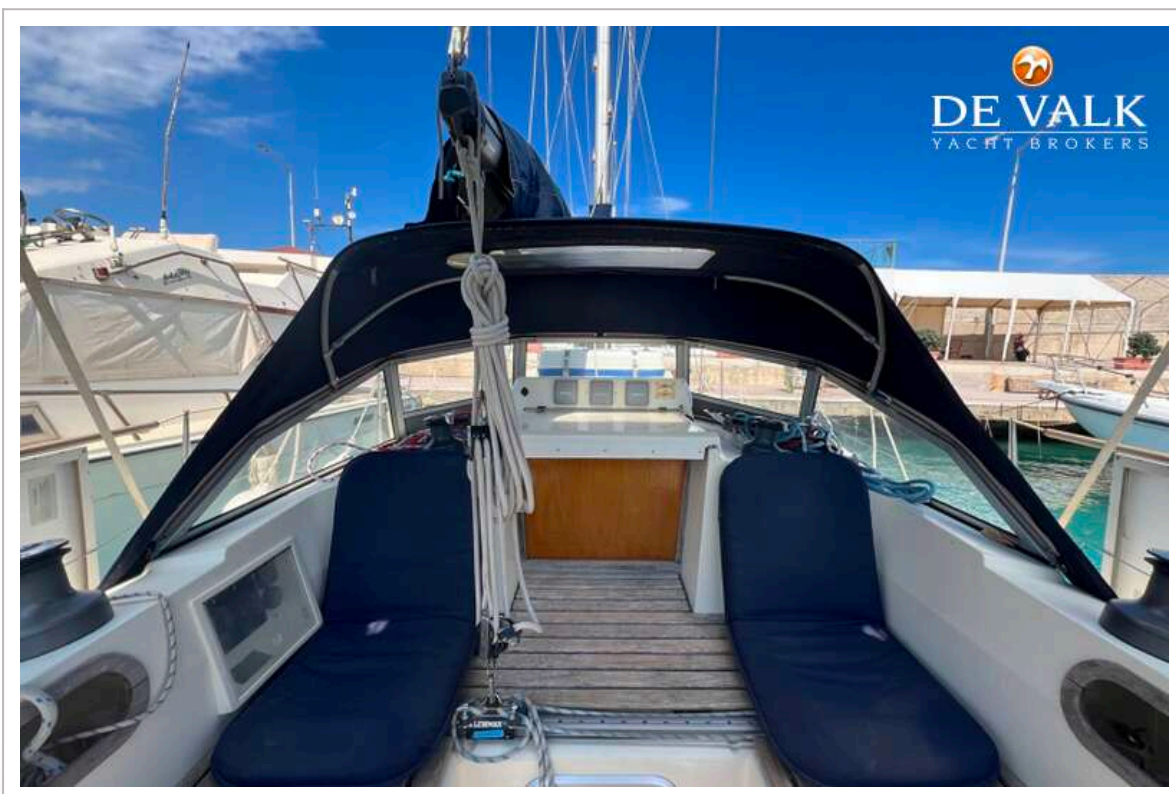
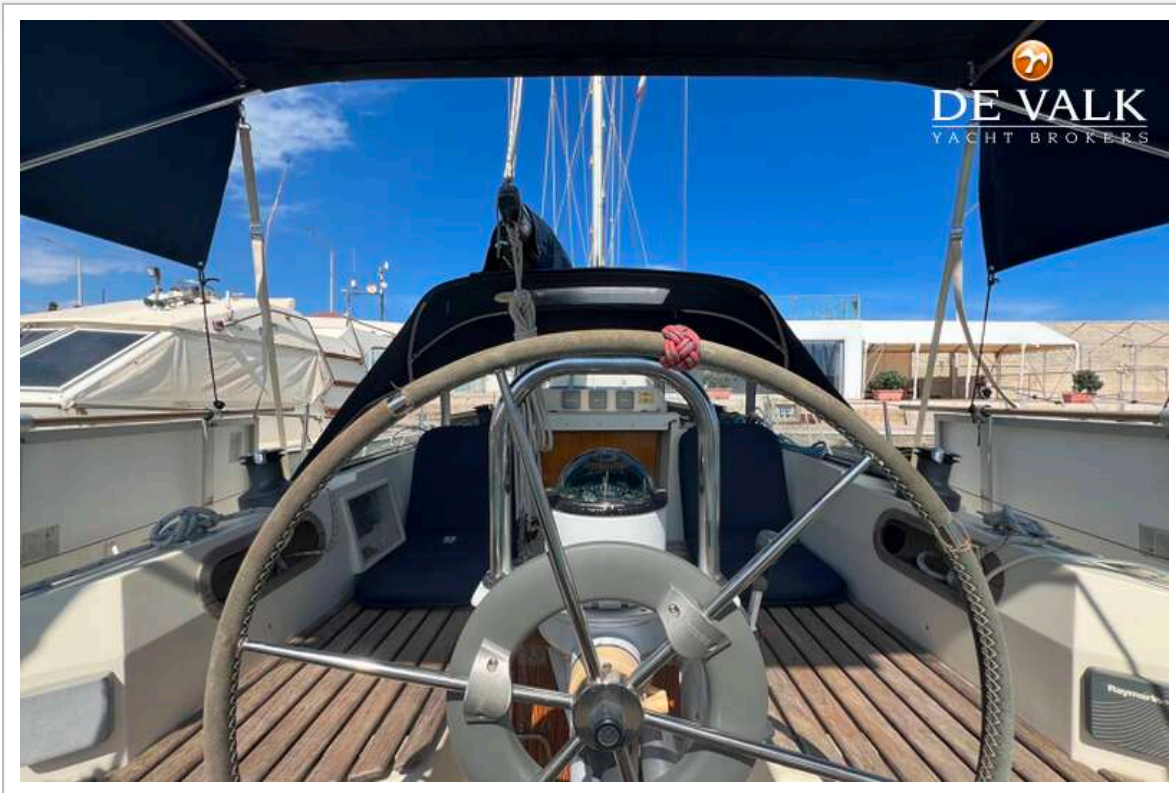




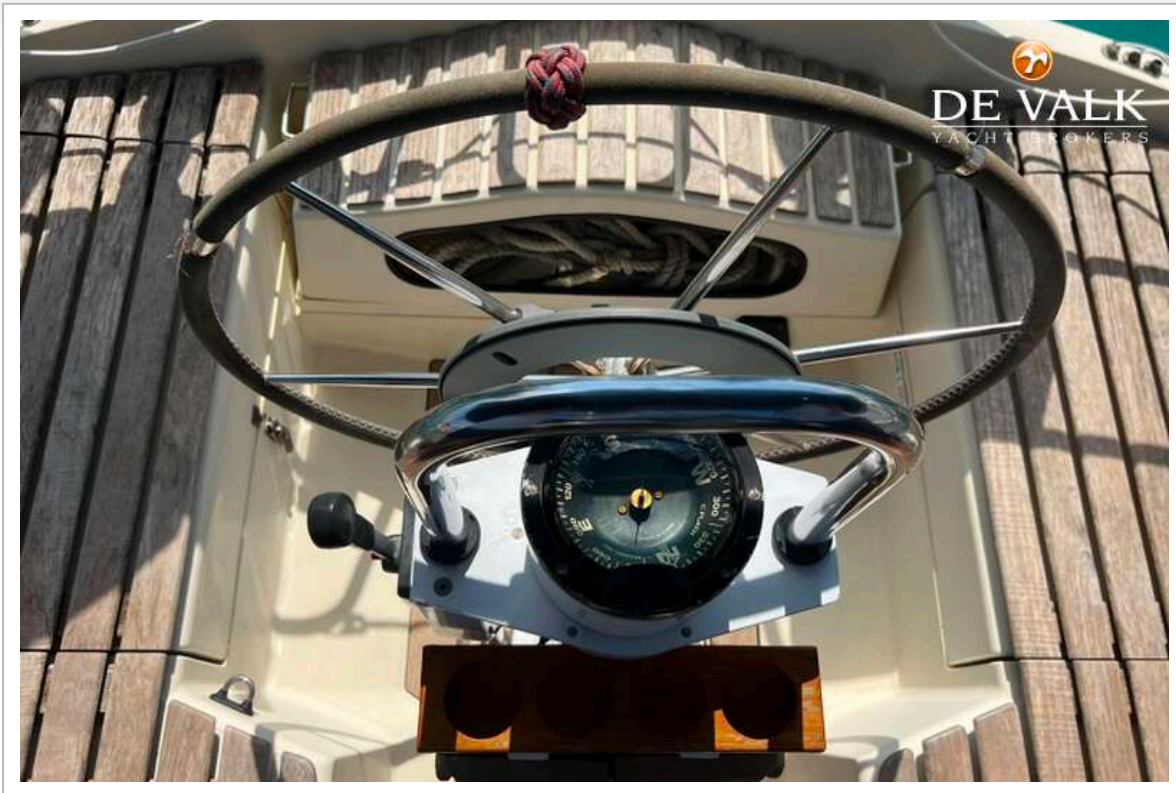


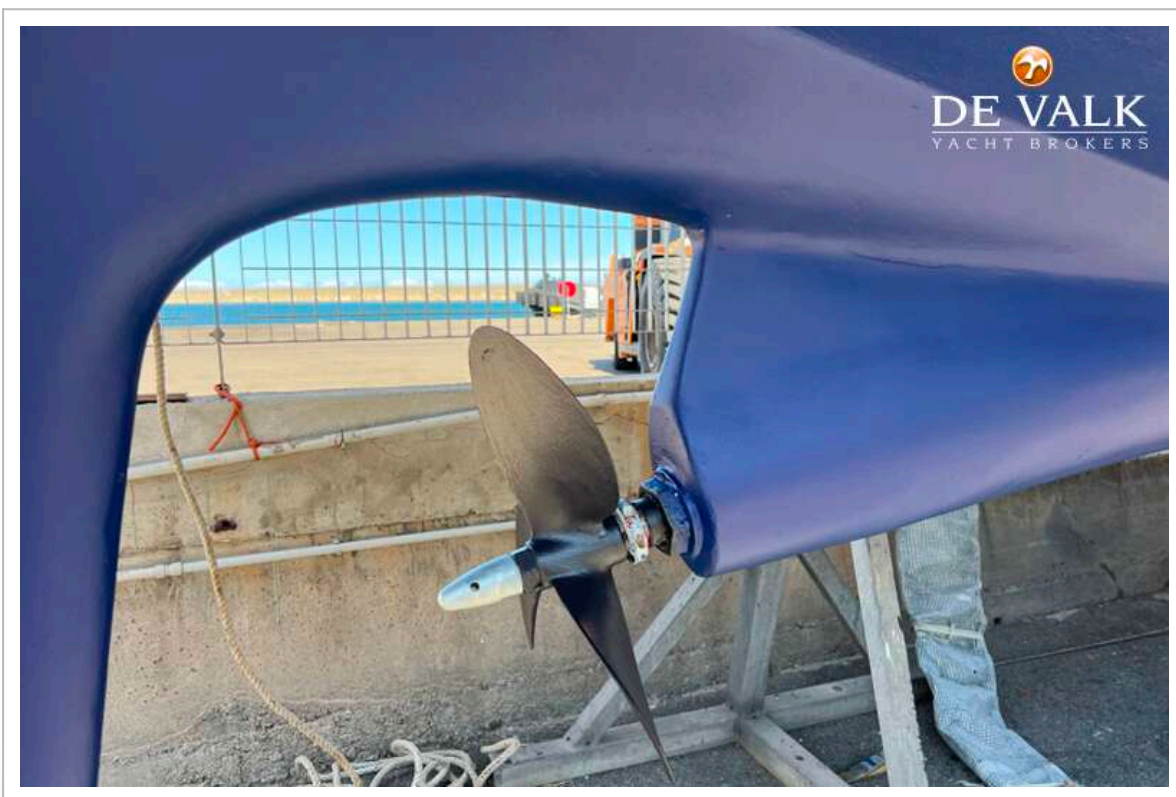


# CONTEST 35S

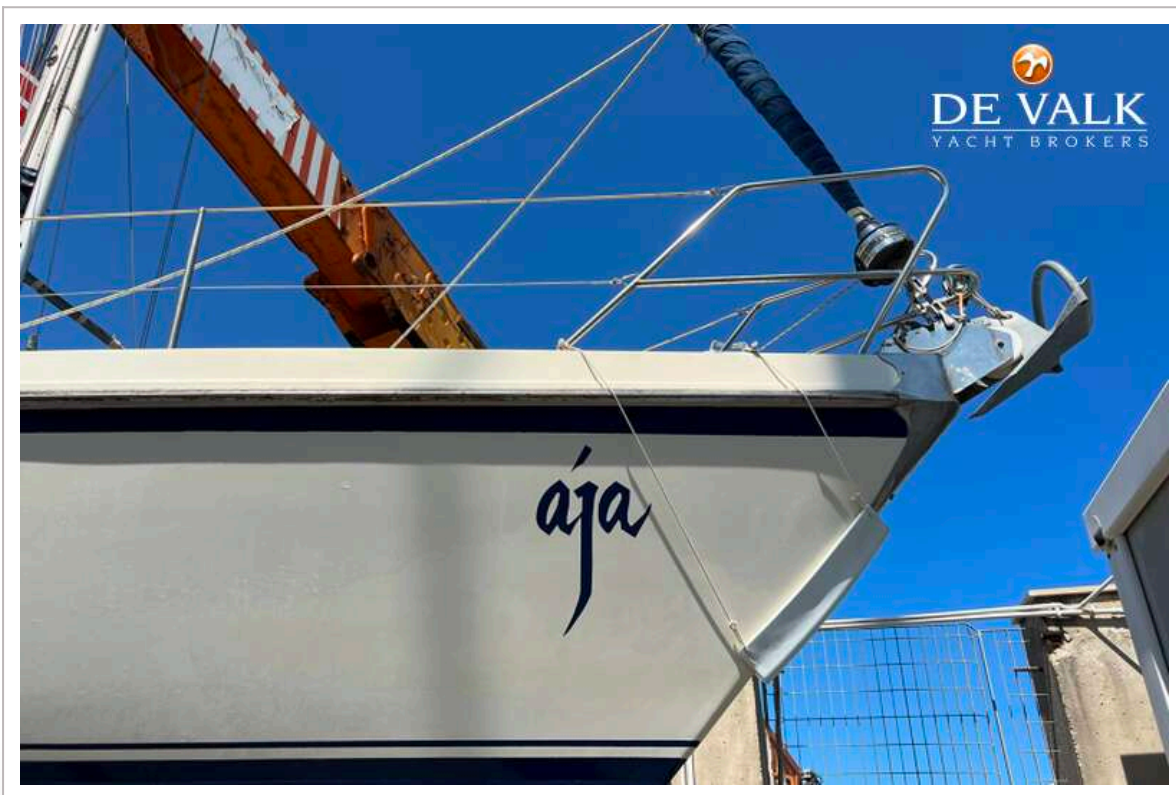
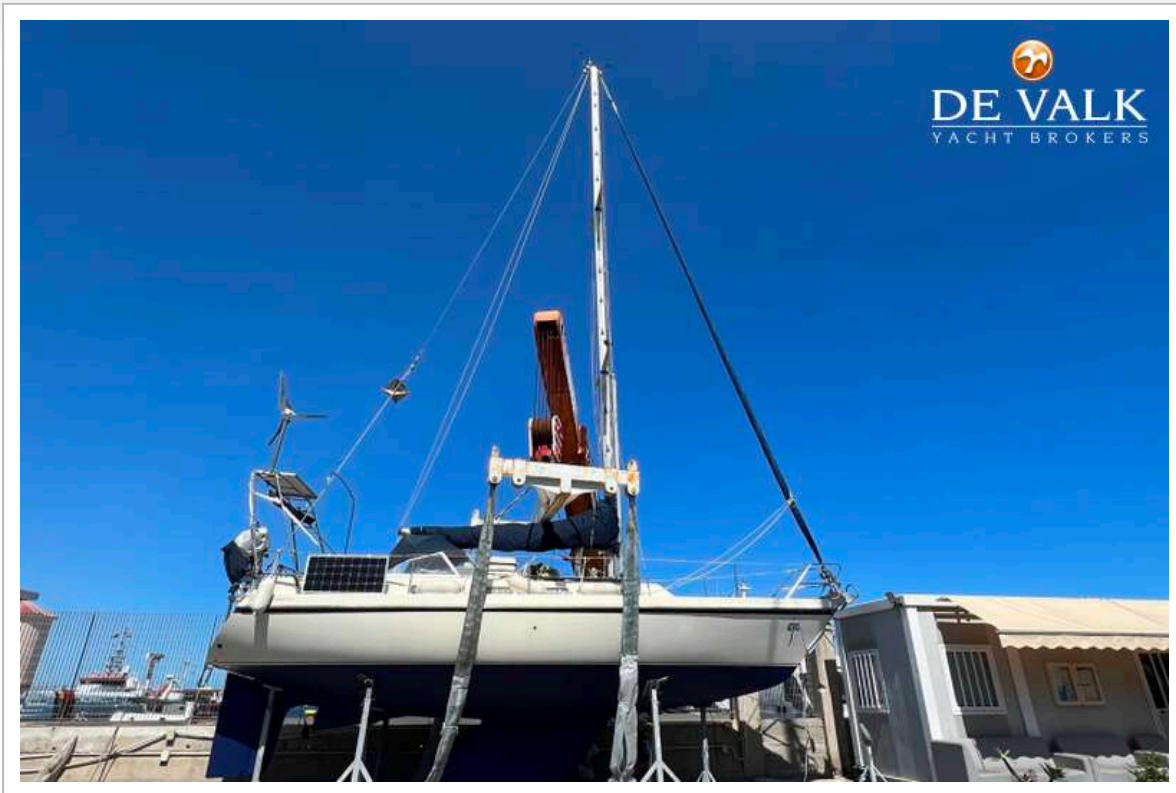


# CONTEST 35S

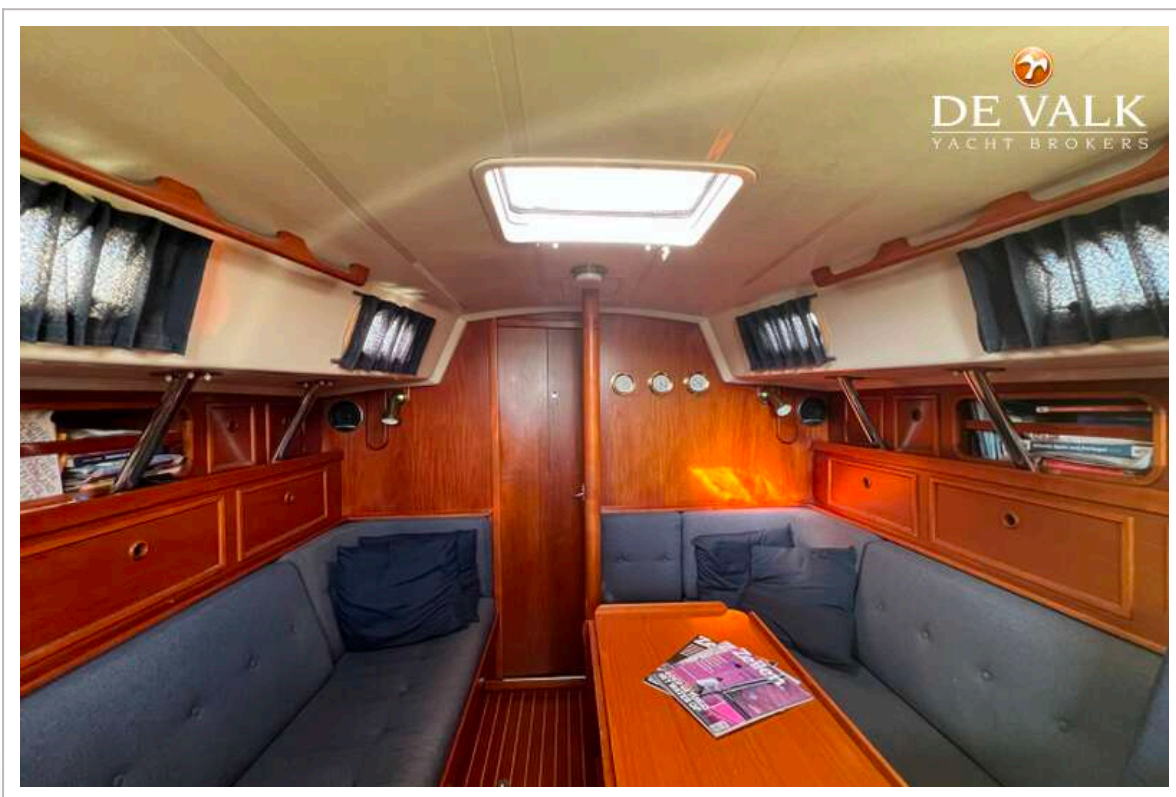




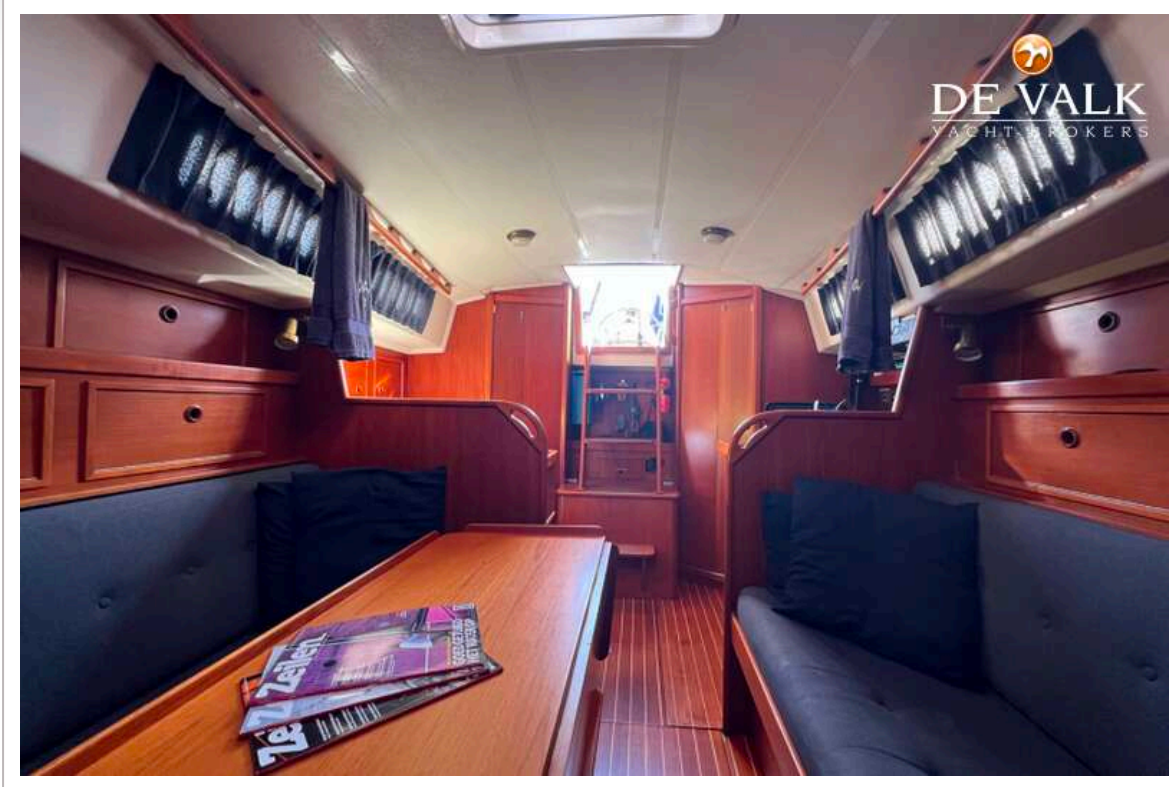




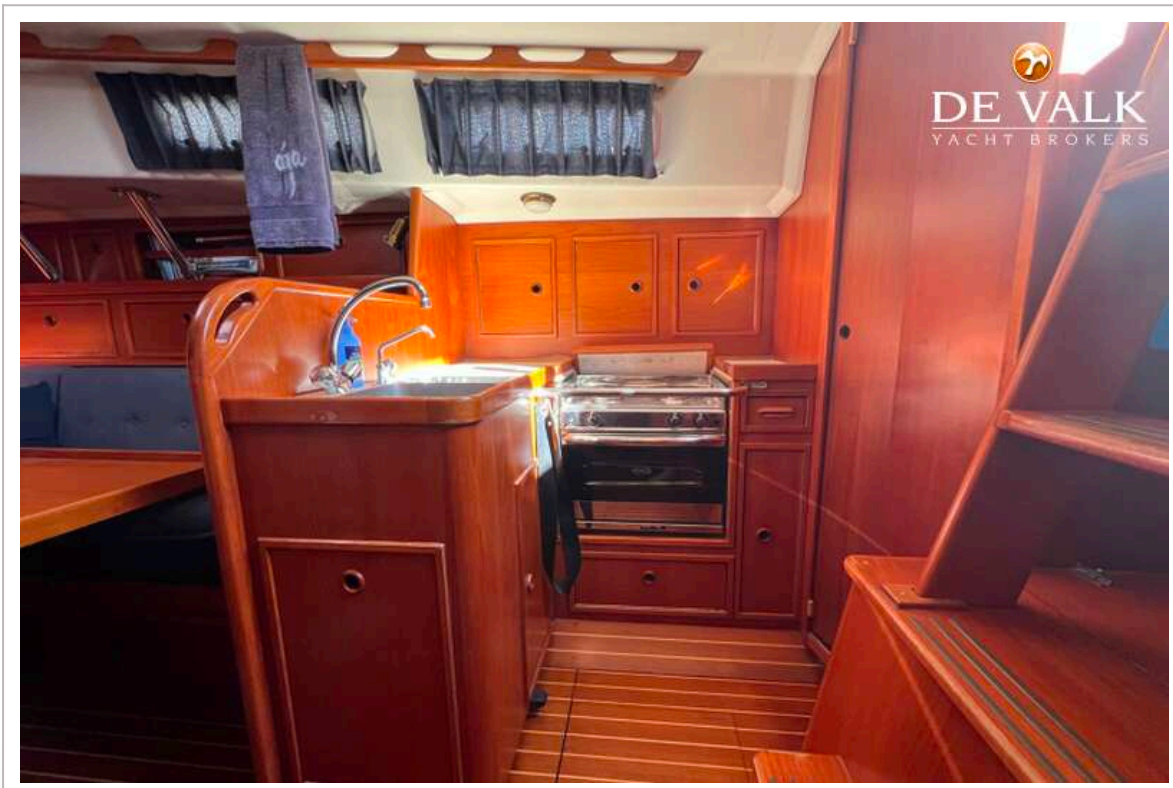
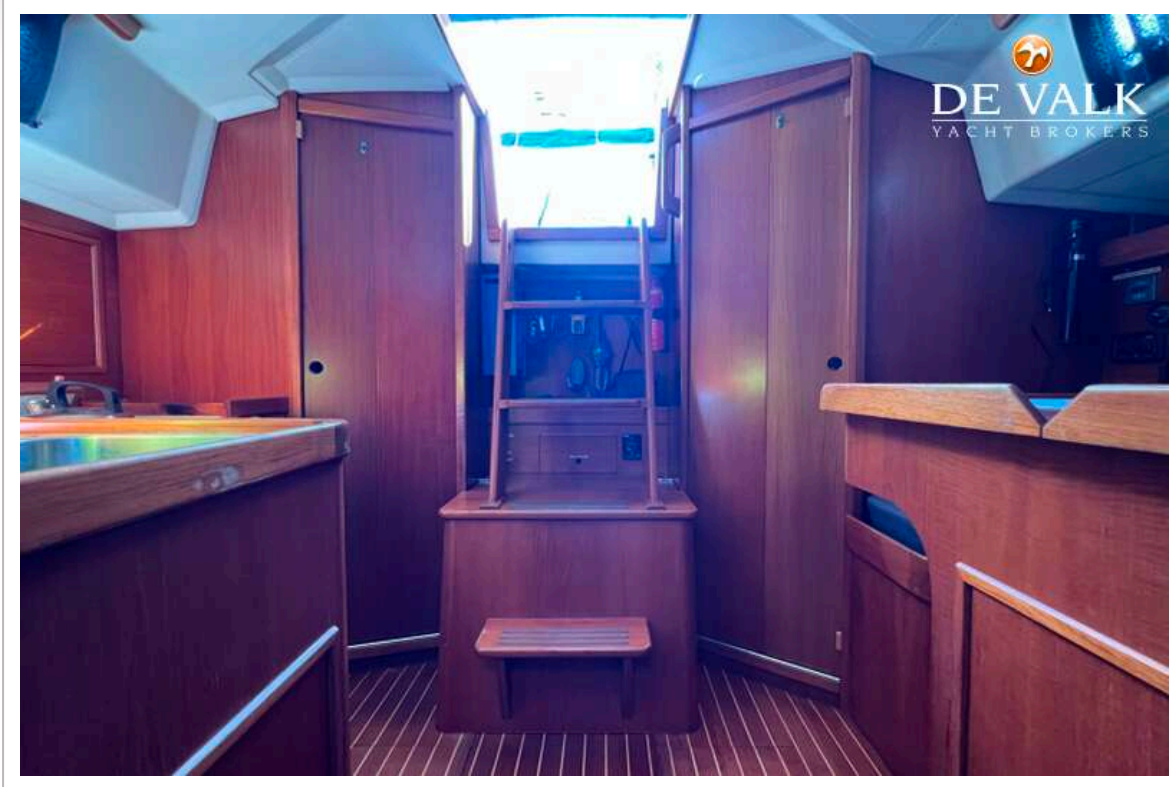
# CONTEST 35S



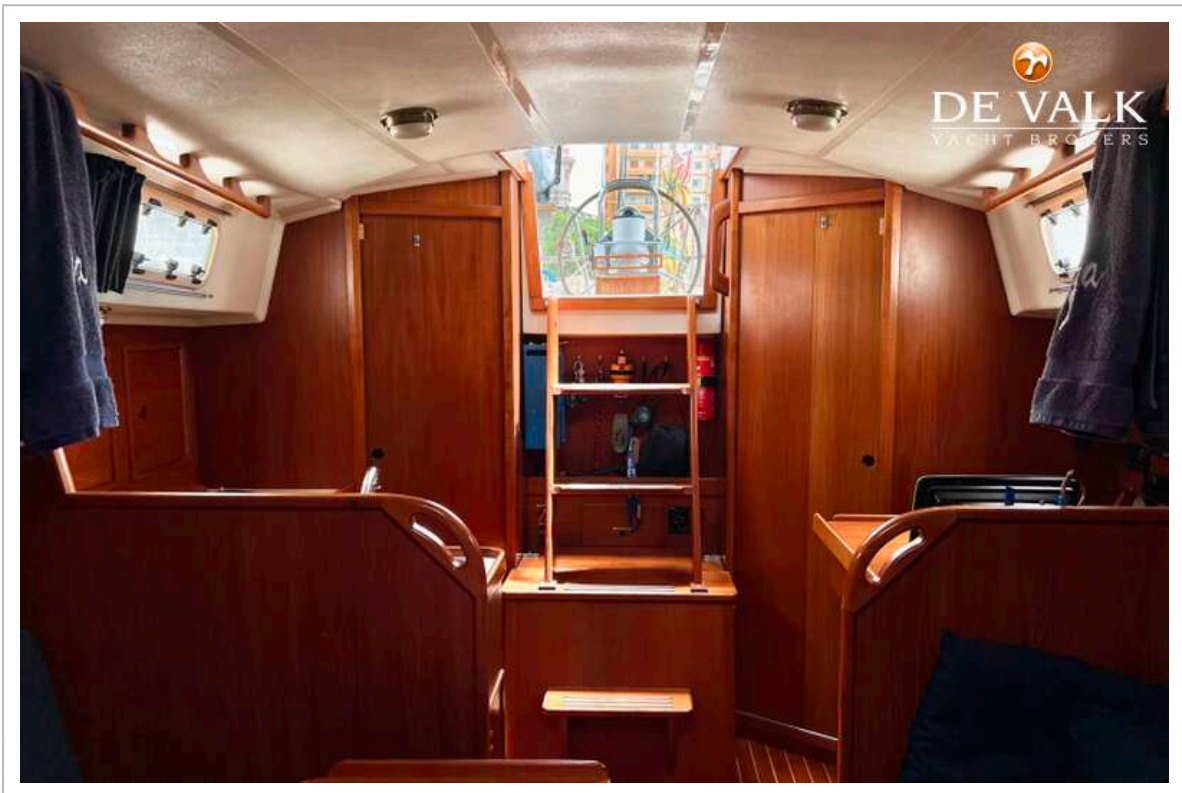
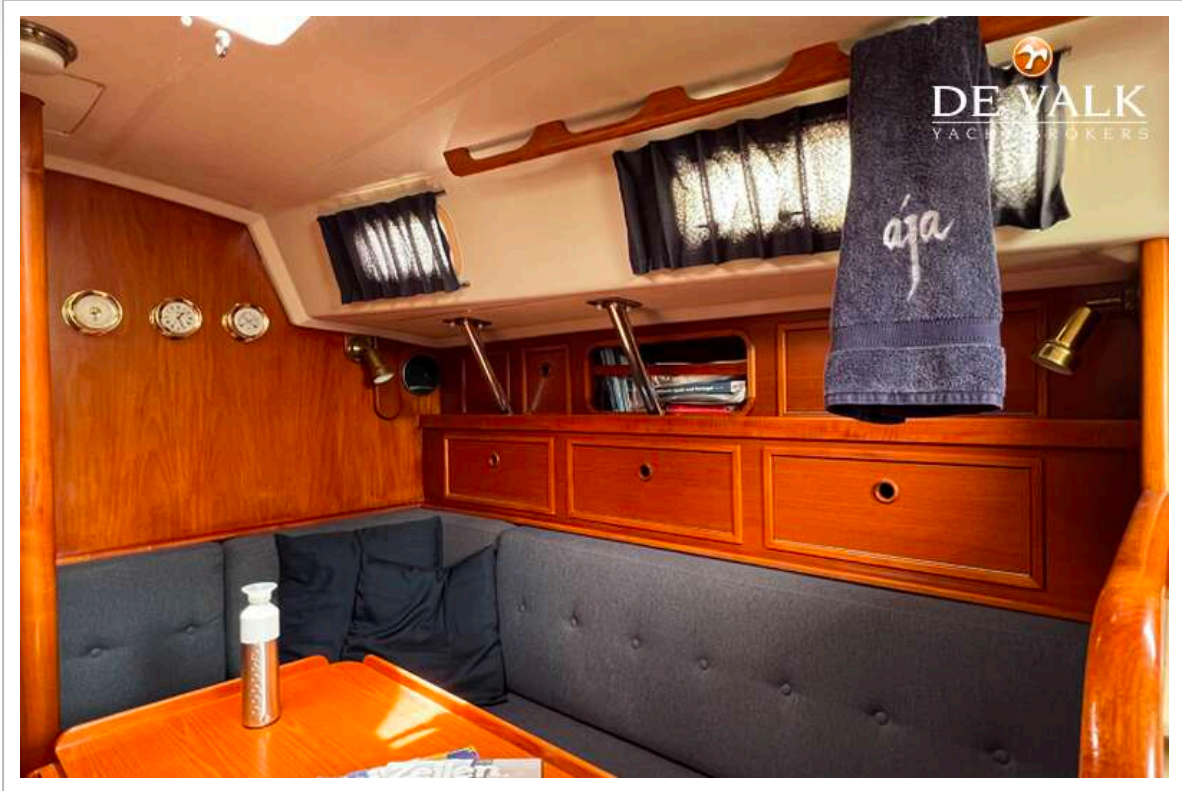
# CONTEST 35S



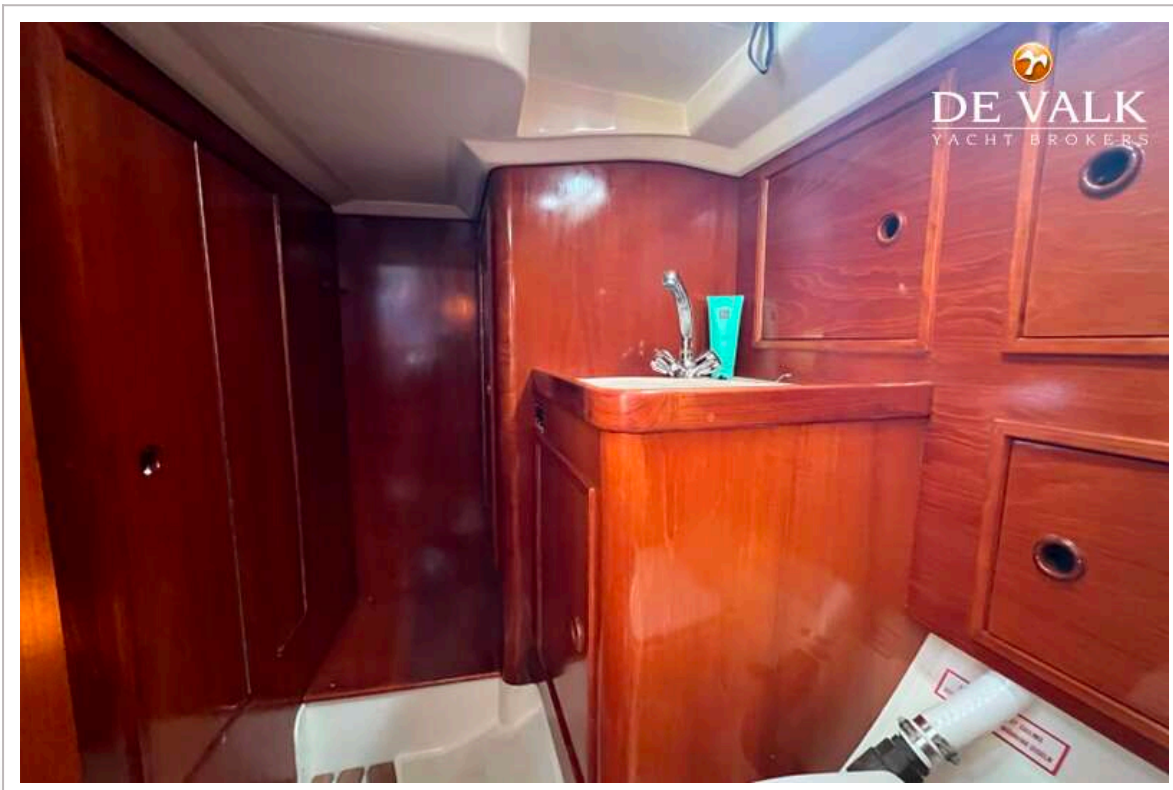
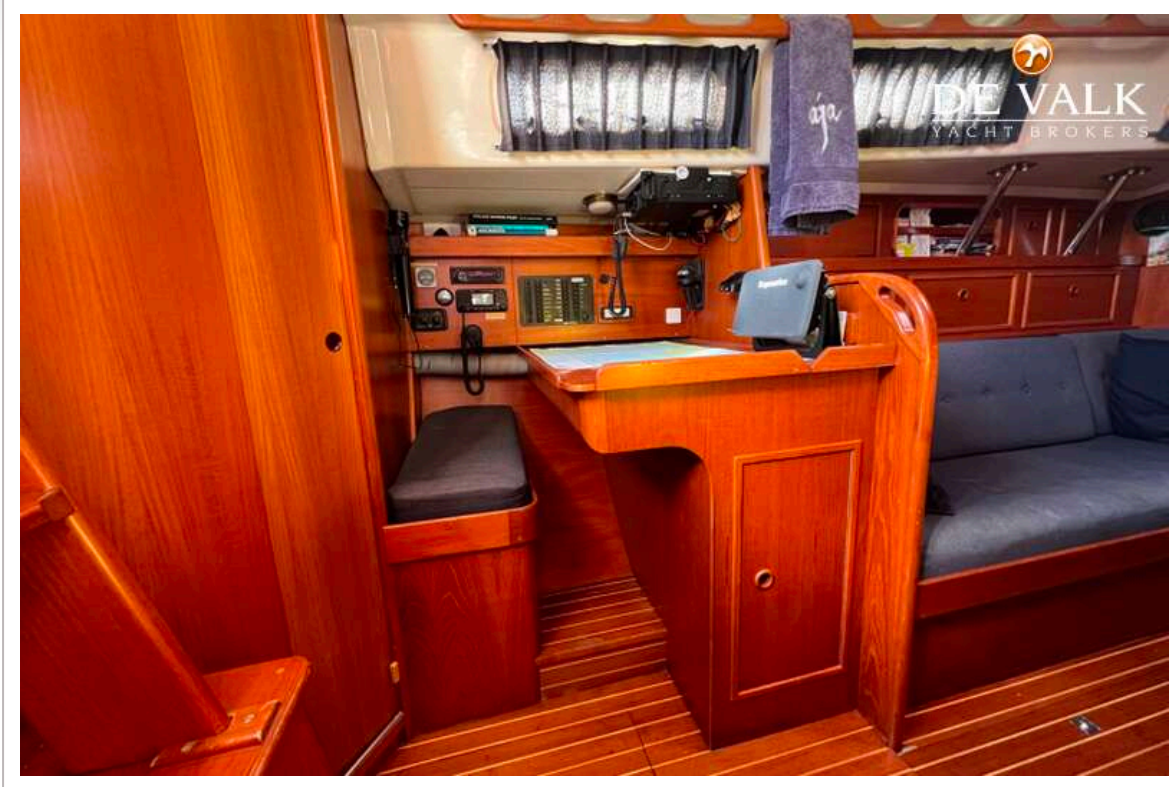
# CONTEST 35S



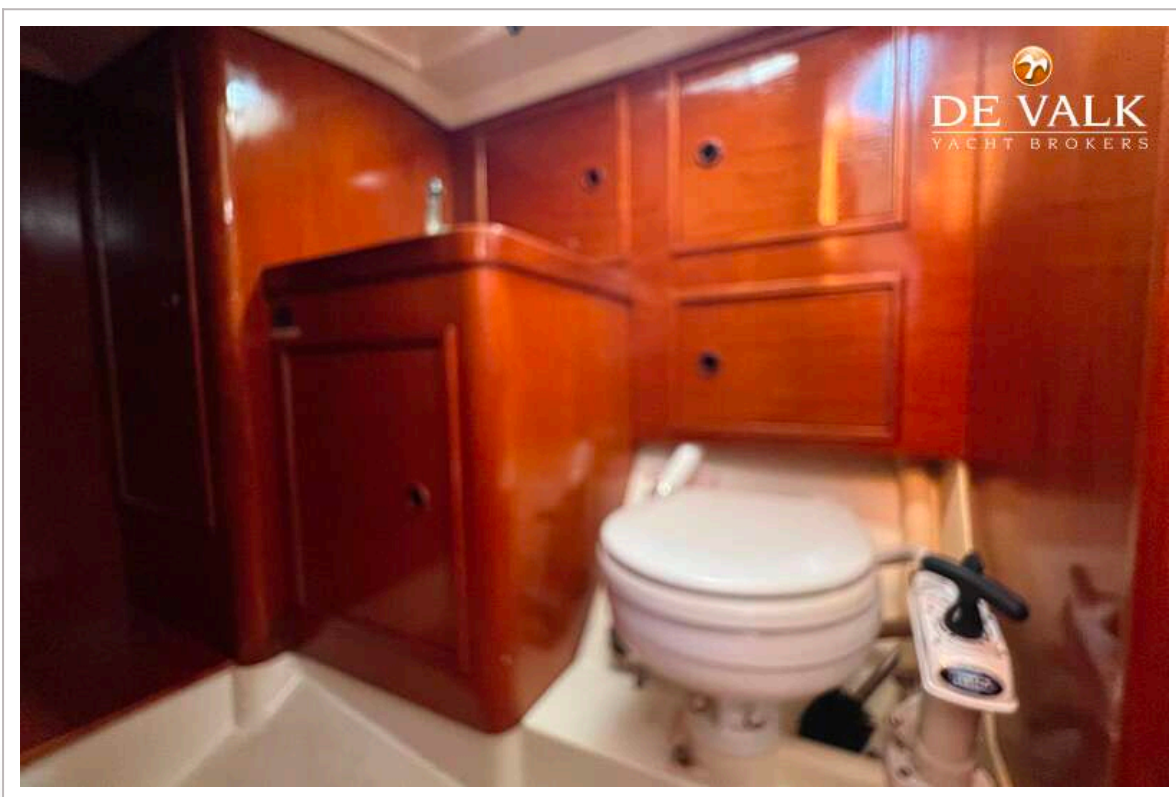
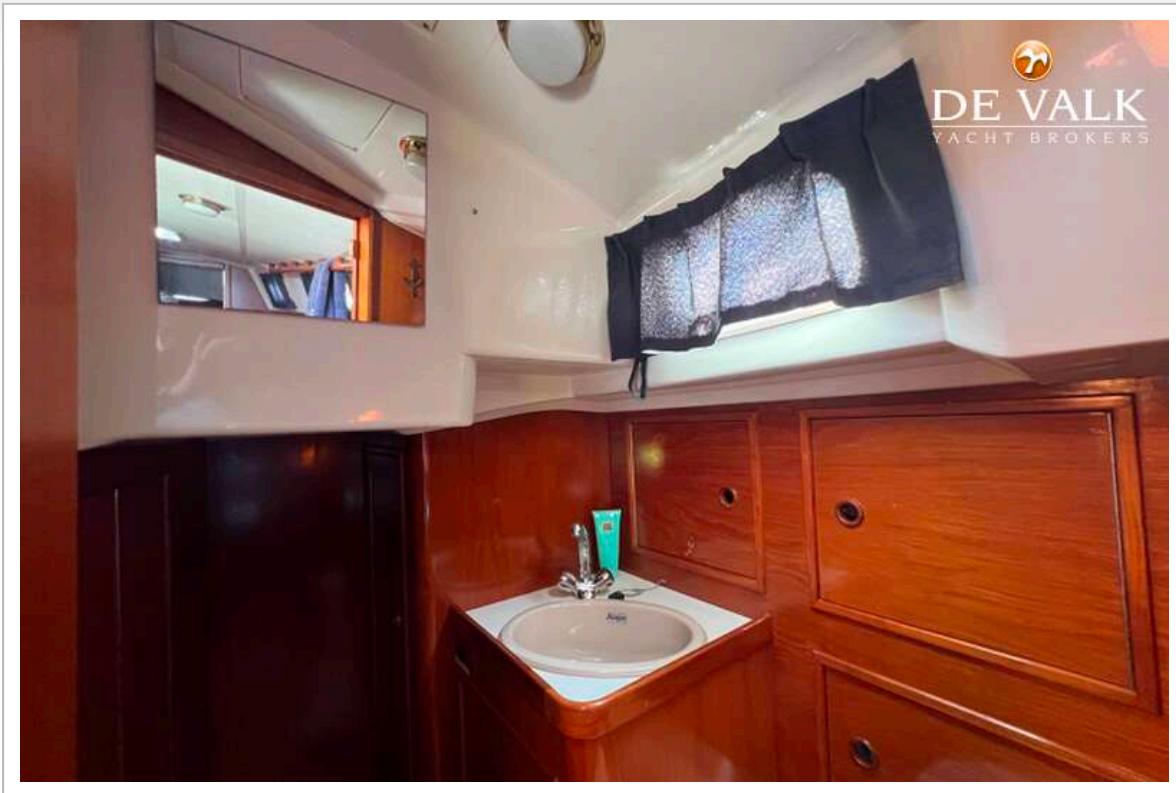
# CONTEST 35S



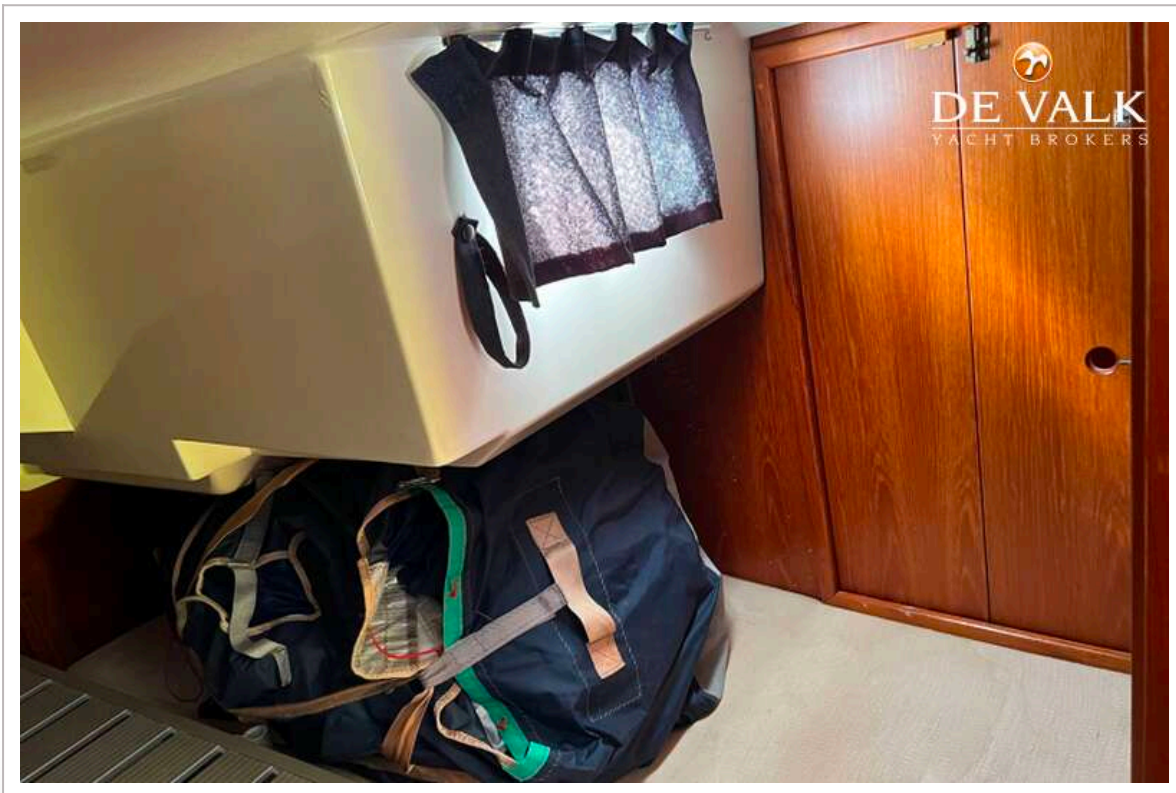
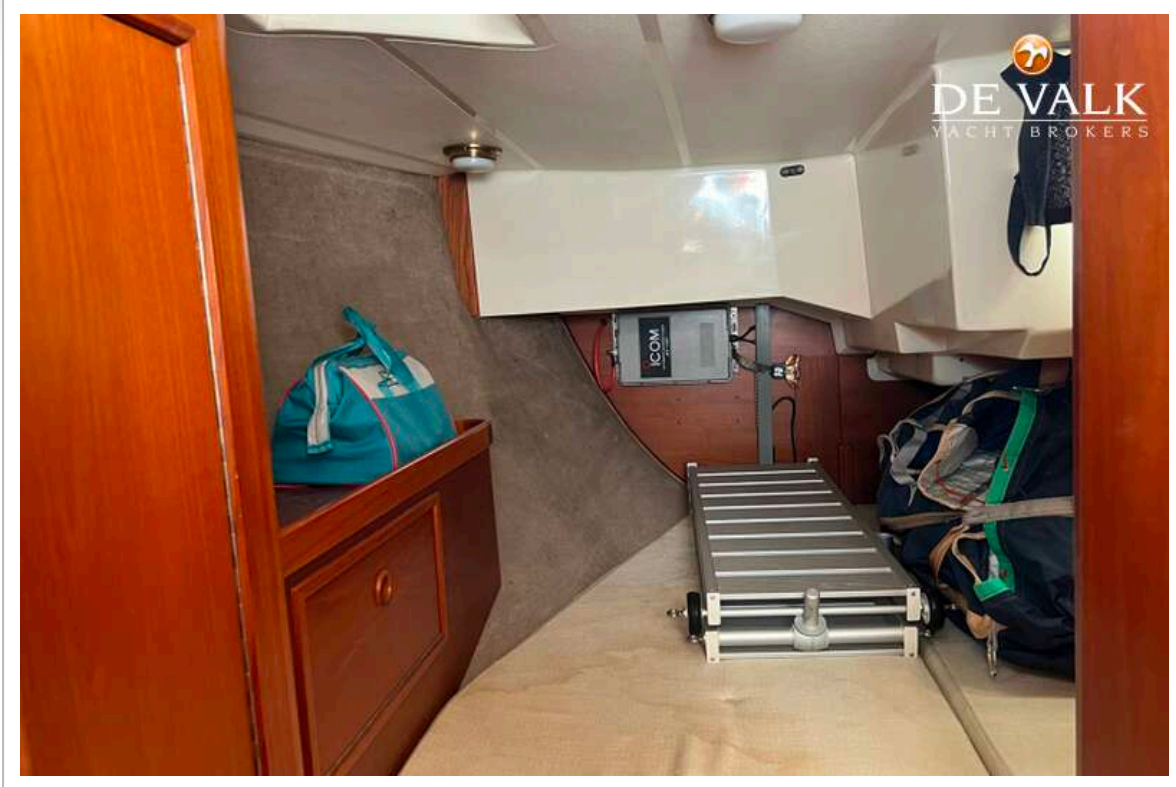
# CONTEST 35S



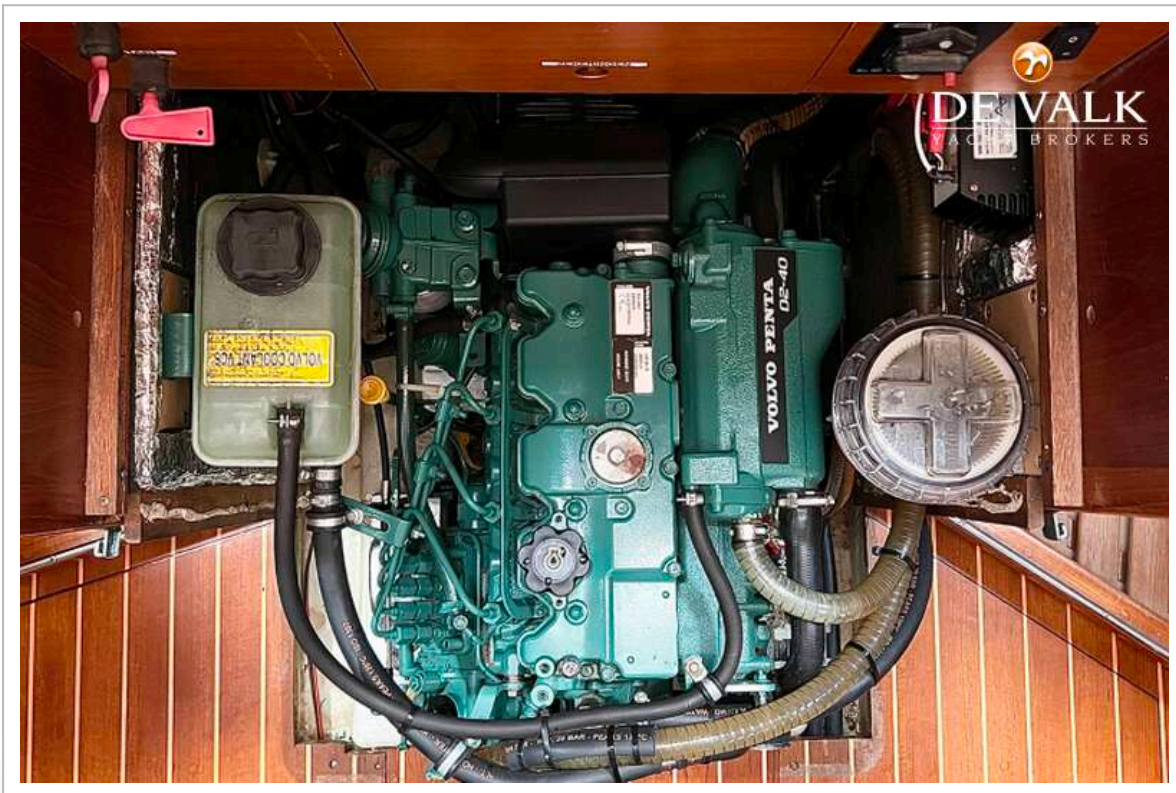
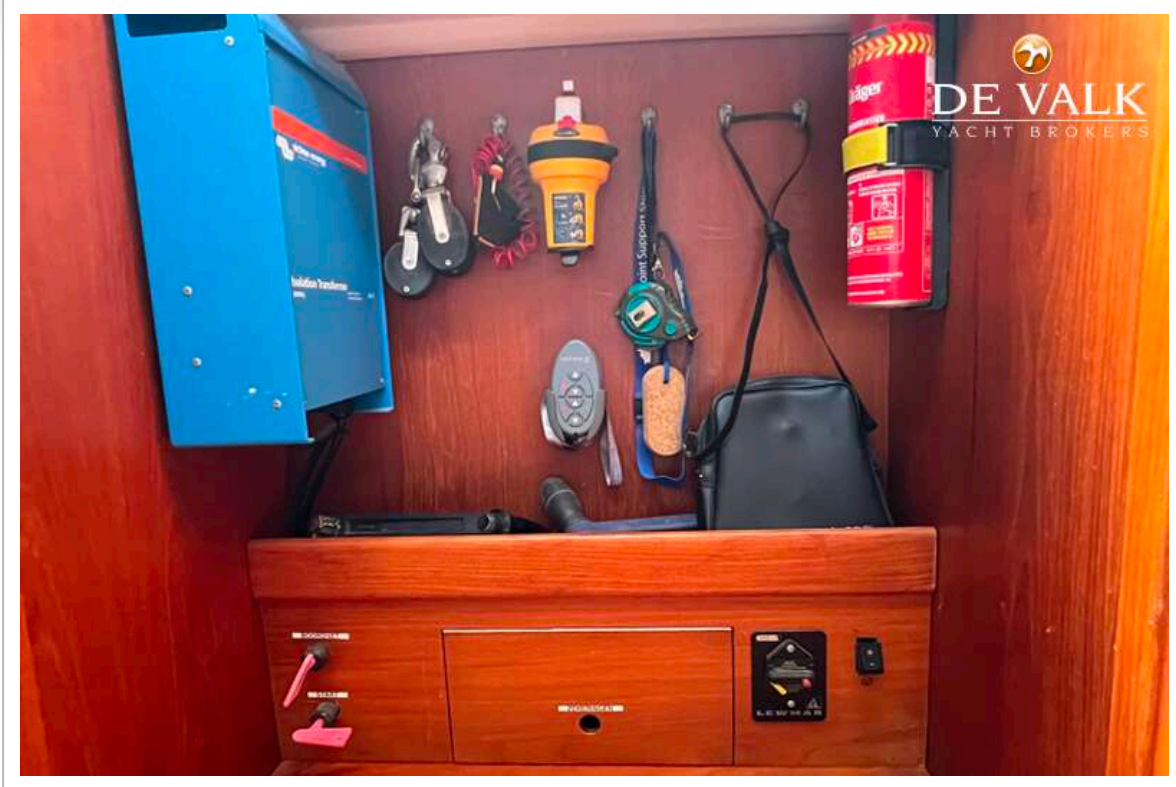
# CONTEST 35S



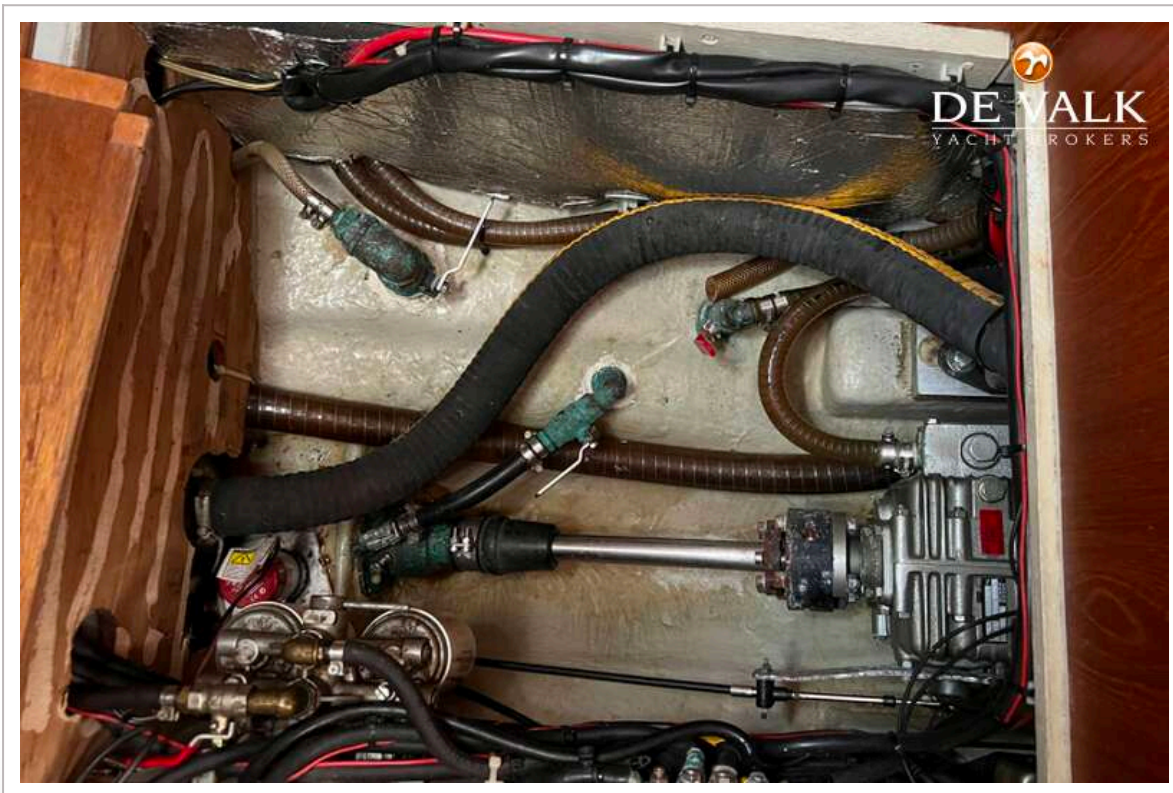
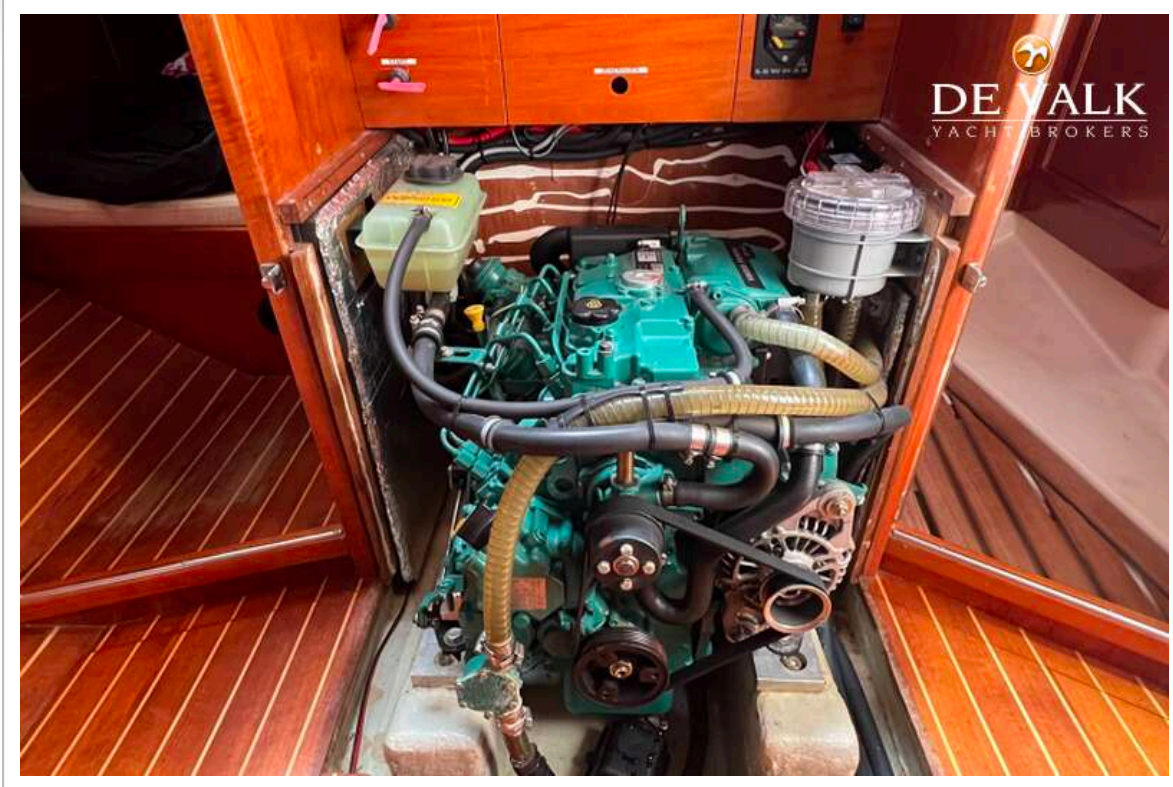
# CONTEST 35S



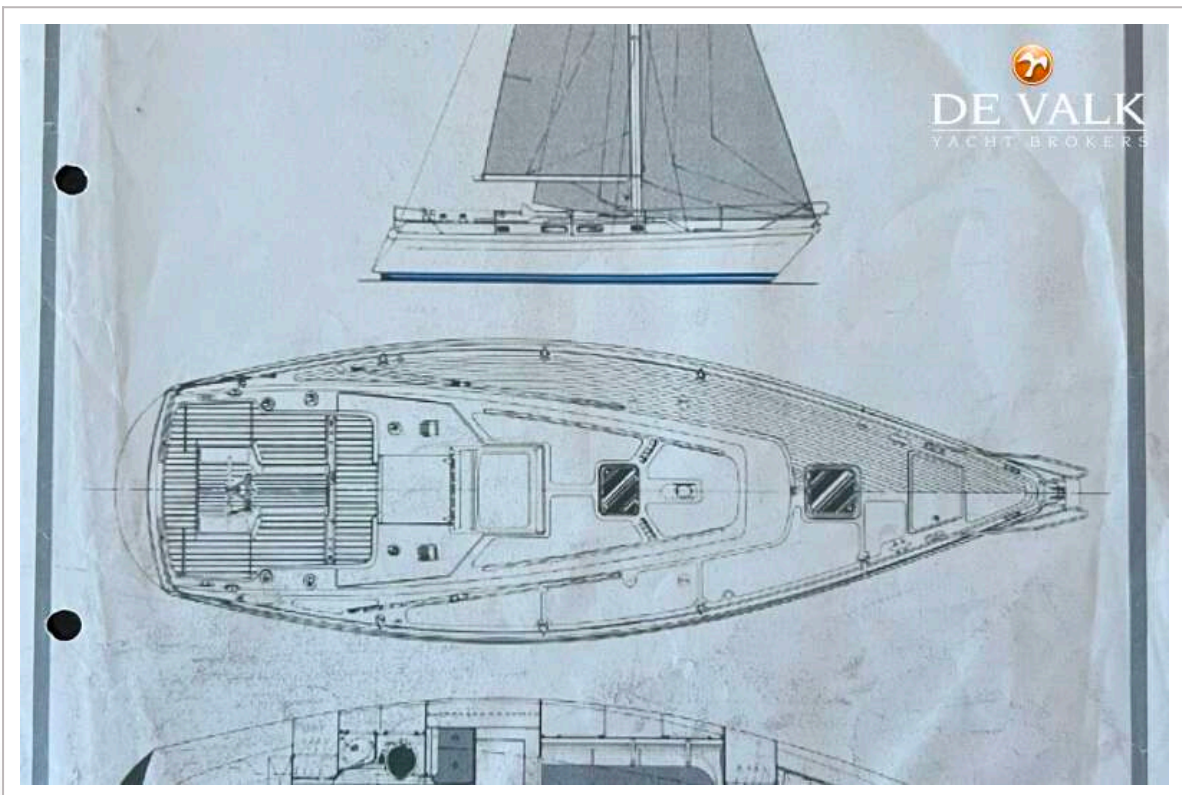
# CONTEST 35S

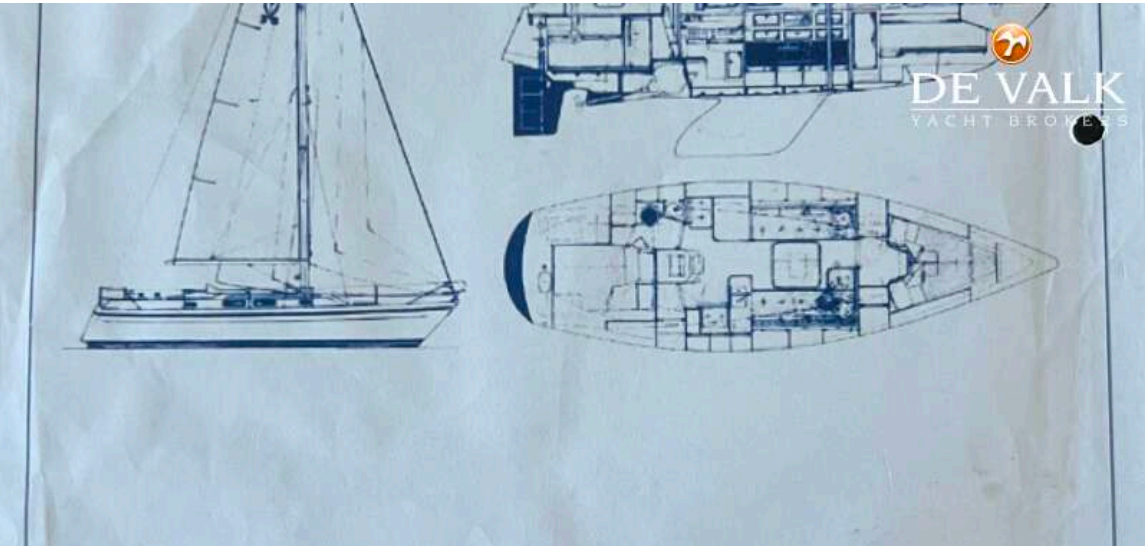


# CONTEST 35S



# CONTEST 35S

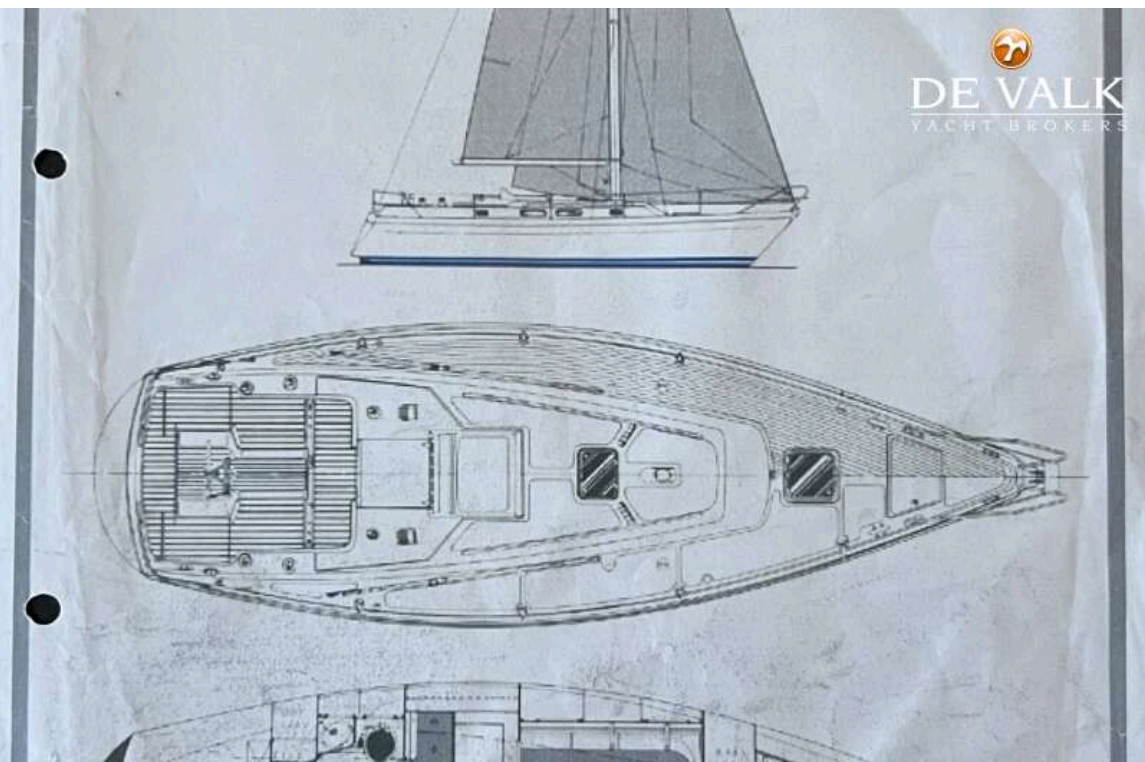




**DE VALK**  
YACHT BROKERS

## SPECIFICATIONS AND ORDER FORM

Length hull	10.90 m	35' 8"	Mastheight above waterline	15.70 m	53' 11"
Length waterline	9.30 m	30' 5"	Mainsail	23.9 m <sup>2</sup>	257 sq.ft.
Maximum beam	3.52 m	11' 5"	Genoa	33.0 m <sup>2</sup>	355 sq.ft.
Draft standard keel	1.90 m	6' 2"			



**DE VALK**  
YACHT BROKERS

