



DE VALK
YACHT BROKERS



LONG ISLAND 33 RUNABOUT HYBRID



DE VALK
YACHT BROKERS

LONG ISLAND 33 RUNABOUT HYBRID

BROKER'S COMMENTS

The Long Island 33 Runabout Hybrid (2020) is a 10.20 m day boat with a blue deep-V hull and teak decking. Powered by a 270 hp Mercury diesel engine and a 15 kW electric motor, she offers silent cruising for up to 5 hours. The layout features two seating areas (one convertible to a sunbed), a galley, wet bar, toilet, and sun deck. Equipped with Mercury joystick piloting (JPO) for effortless manoeuvring, Raymarine navigation display, electric windlass with chain counter, and extended swim platform. This stunning Long Island is now available for viewing in our covered sales marina.

Julian de Heer

SPECIFICATIONS

Dimensions	10.20 x 2.85 x 0.75 (m)	Builder	Long Island Yachts
Built	2020	Cabins	1
Material	GRP	Berths	
Engine(s)	1 x Mercury V6 delec	Hp/Kw	270.00 (hp), 198.72 (kw)
Asking price	€ 298.000 (VAT Paid)	Lying	at sales office

CONTACT

Sales office	De Valk Loosdrecht B.V.	Telephone	+31 (0)35 582 90 30
Address	't Breukeleveense Meentje 6 1231LM Loosdrecht / Wijdemeren NL	E-mail	loosdrecht@devalk.nl

DISCLAIMER

These particulars are given in good faith as supplied but cannot be guaranteed.



LONG ISLAND 33 RUNABOUT HYBRID

GENERAL

Model	LONG ISLAND 33 RUNABOUT HYBRID
Type	motor yacht
LOA (m)	10,20
Beam (m)	2,85
Draft (m)	0,75
Year built	2020
Builder	Long Island Yachts
Country	The Netherlands
Displacement (t)	4
CE norm	C
Hull material	GRP
Hull colour	blue
Hull shape	deep-V
Superstructure material	GRP
Deck material	GRP
Deck finish	teak
Superstructure deck finish	teak
Cockpit deck finish	teak
Window frame	stainless steel
Window material	glass
Deckhatch	1x
Fuel tank (litre)	polyethylene 325
Level indicator (fuel tank)	Integrated in Raymarine Aixom Pro 9
Freshwater tank (litre)	polyethylene 115
Level indicator (freshwater)	Integrated in Raymarine Aixom Pro 9
Blackwater tank (litre)	polyethylene
Level indicator (blackwater)	Integrated in Raymarine Aixom Pro 9
Blackwater tank extraction	deck extraction + pump
Outside helm position	hydraulic Seastar



LONG ISLAND 33 RUNABOUT HYBRID

ACCOMMODATION

Cabins	1
Interior	Gebroken wit bekleding
Floor	teak
Open cockpit	Two spacious seating areas, one of which can be converted into a sunbed.
Galley	yes
Countertop	corian
Sink	stainless steel
Cooker	ceramic Wallas 85D two-burner
Fridge	Domestic
Freezer	Inside fridge
Hot water system	220V + engine
Water pressure system	electrical Jabsco
Toilet	separate
Toilet system	electric Tecma
Wet bar	Stainless steel sink and Eno Vitroplancha electric grill plate.

MACHINERY

No of engines	1
Make	Mercury
Type	V6
HP	270
kW	198.72
Fuel	diesel electric
Maximum speed (kn)	27
Engine hours	87
Engine cooling system	freshwater heat exchanger
Drive	shaft
Engine controls	electrical
Gearbox	hydraulic ZF 63 A



LONG ISLAND 33 RUNABOUT HYBRID

Electric engine	Combi BK400 15 kW, installed in 2023.
kW	15
Engine controls	electrical
Bowthruster	electric Mercury JPO (joystick control)
Sternthruster	electric Mercury JPO (joystick control)
Electric hybride drive	Fully electric sailing for over 5 hours, depending on speed, current, and wind.
Exhaust	watercooled
Propeller type	fixed
Propeller shaft material	stainless steel
Shaft lubrication	water
Manual bilge pump	Whale
Electric bilge pump	yes
Bilge alarm	yes
Electrical installation	12V/220V
Batteries	8x Lithium 51.2V/100Ah/5120Wh for electric engine
Service battery	3x Mastervolt AGM 12V/130Ah
Battery monitor	Mastervolt control panel
Battery charger/inverter	1.500 Watt Mastervolt AC Master 12/1500-220 Volt - 50/60 Hz
Shorepower	with cable

NAVIGATION

Electric compass	Integrated in Raymarine Axiom 9 Pro
Depth sounder/log	Integrated in Raymarine Axiom 9 Pro
Rudder angle indicator	yes
Plotter	Raymarine Axiom 9 Pro
Camera	Camera integrated in bow and Raymarine Axiom 9 Pro.
Navigation lights	yes
Extra info	The TrackJack Plus subscription for security is valid until July 2026 and can be transferred to the new owner.



EQUIPMENT

Fixed windscreen	yes
Sprayhood	yes
Cockpit cover	yes
Cockpit cushions	yes
Bathing platform	Extended by 20 cm
Boarding ladder	stainless steel
Deck shower	yes
Anchor	yes
Anchor chain	yes
Chain counter	Quick
Windlass	electrical
Horn	electric
Fenders	yes
Mooring lines	yes



LONG ISLAND 33 RUNABOUT HYBRID



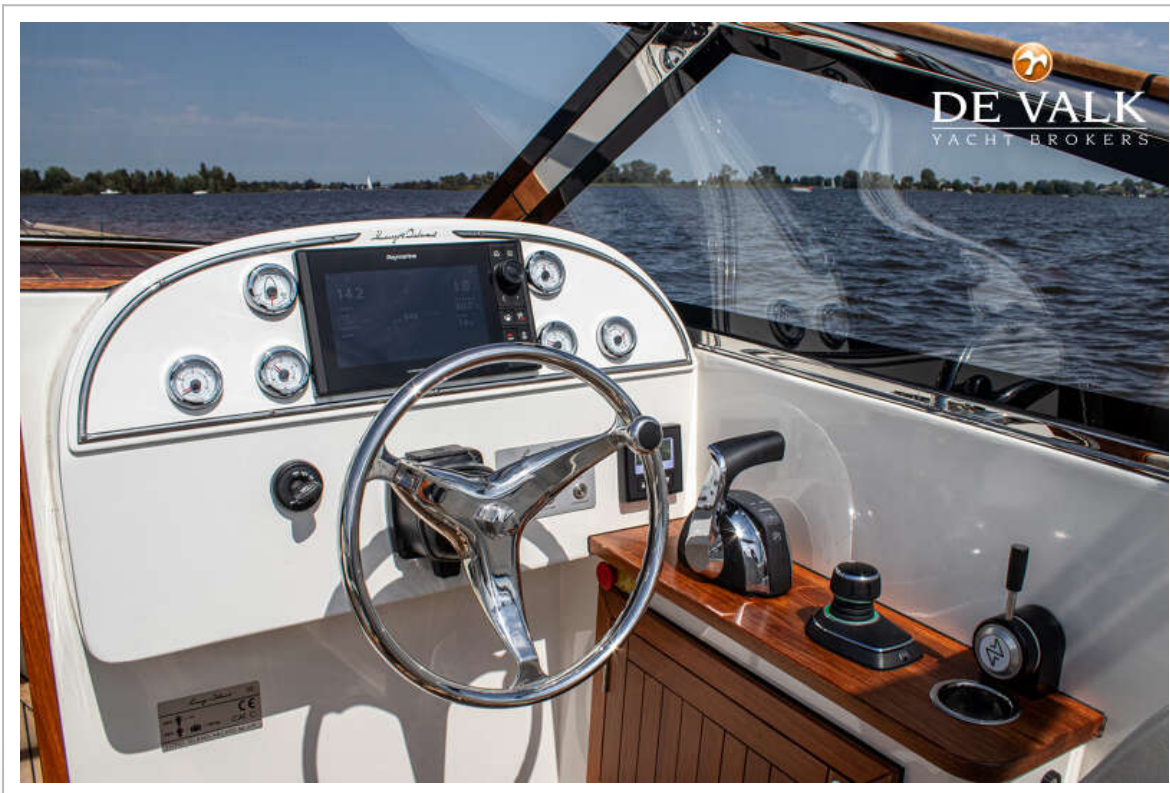
LONG ISLAND 33 RUNABOUT HYBRID



LONG ISLAND 33 RUNABOUT HYBRID



LONG ISLAND 33 RUNABOUT HYBRID



LONG ISLAND 33 RUNABOUT HYBRID



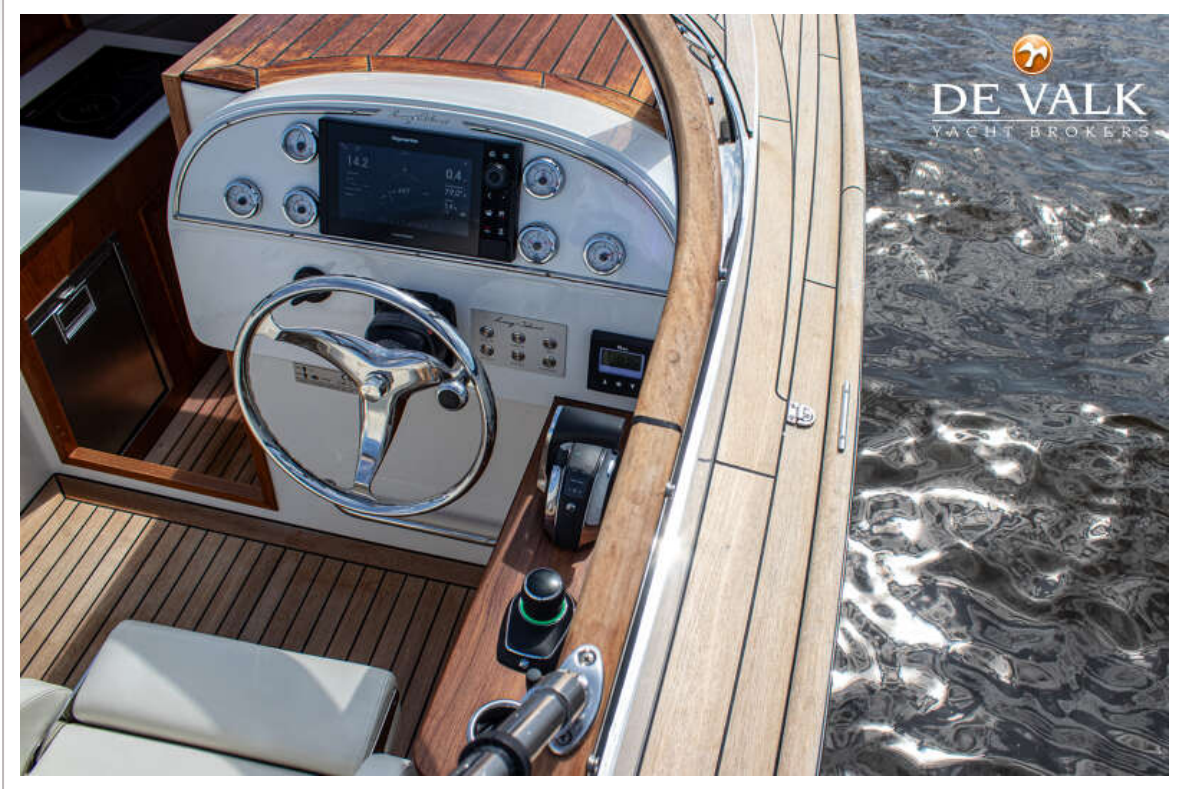
LONG ISLAND 33 RUNABOUT HYBRID



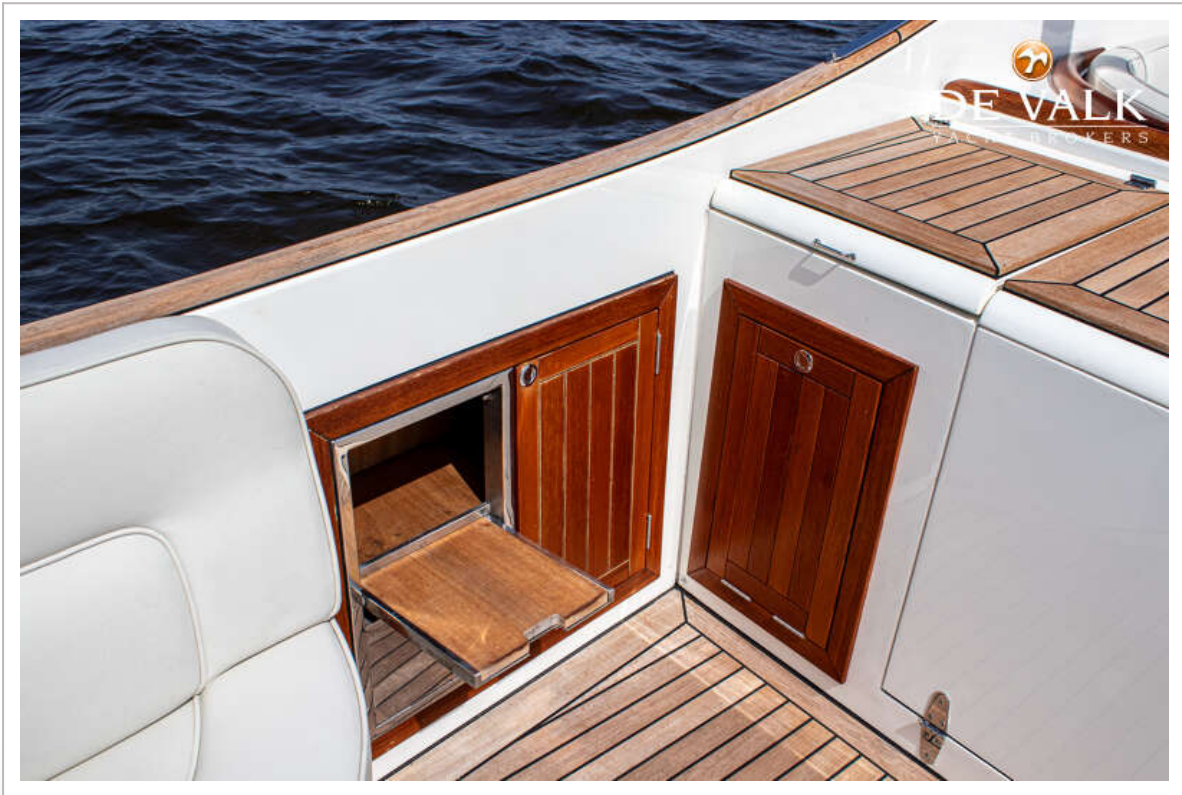
LONG ISLAND 33 RUNABOUT HYBRID



LONG ISLAND 33 RUNABOUT HYBRID



LONG ISLAND 33 RUNABOUT HYBRID



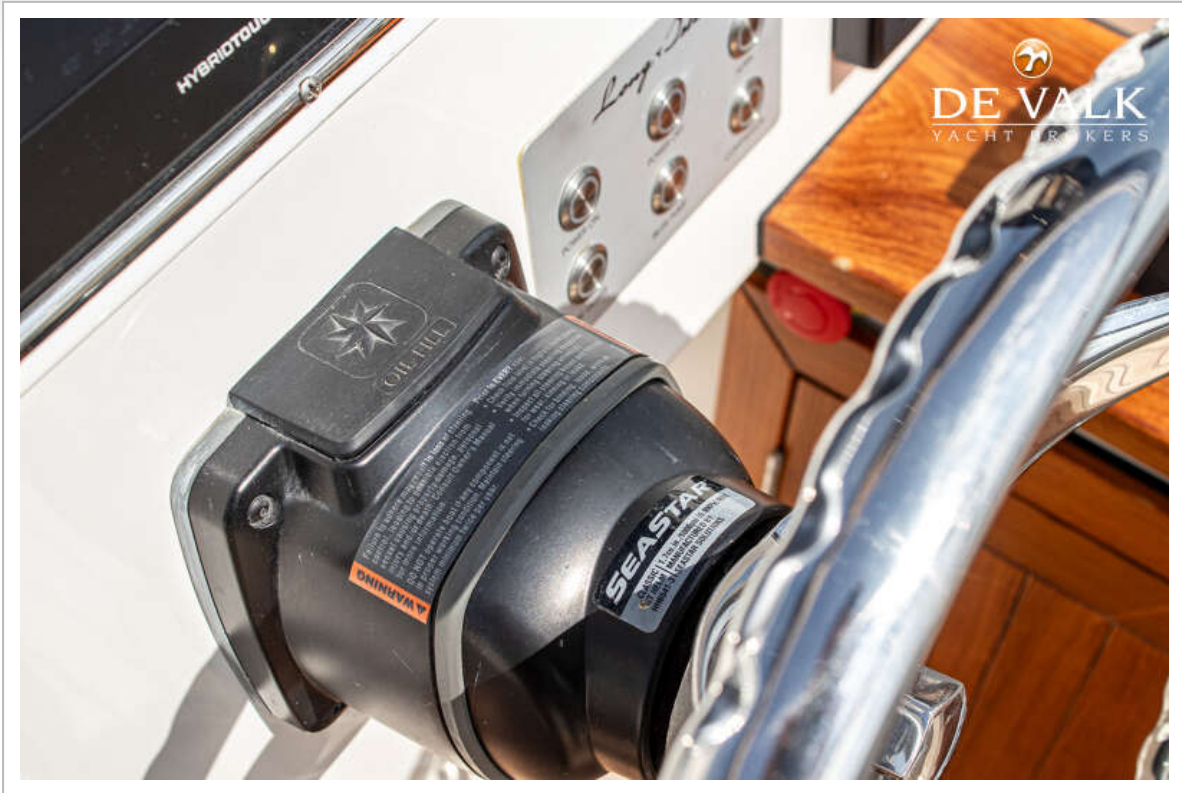
LONG ISLAND 33 RUNABOUT HYBRID



LONG ISLAND 33 RUNABOUT HYBRID



LONG ISLAND 33 RUNABOUT HYBRID



LONG ISLAND 33 RUNABOUT HYBRID



LONG ISLAND 33 RUNABOUT HYBRID



LONG ISLAND 33 RUNABOUT HYBRID



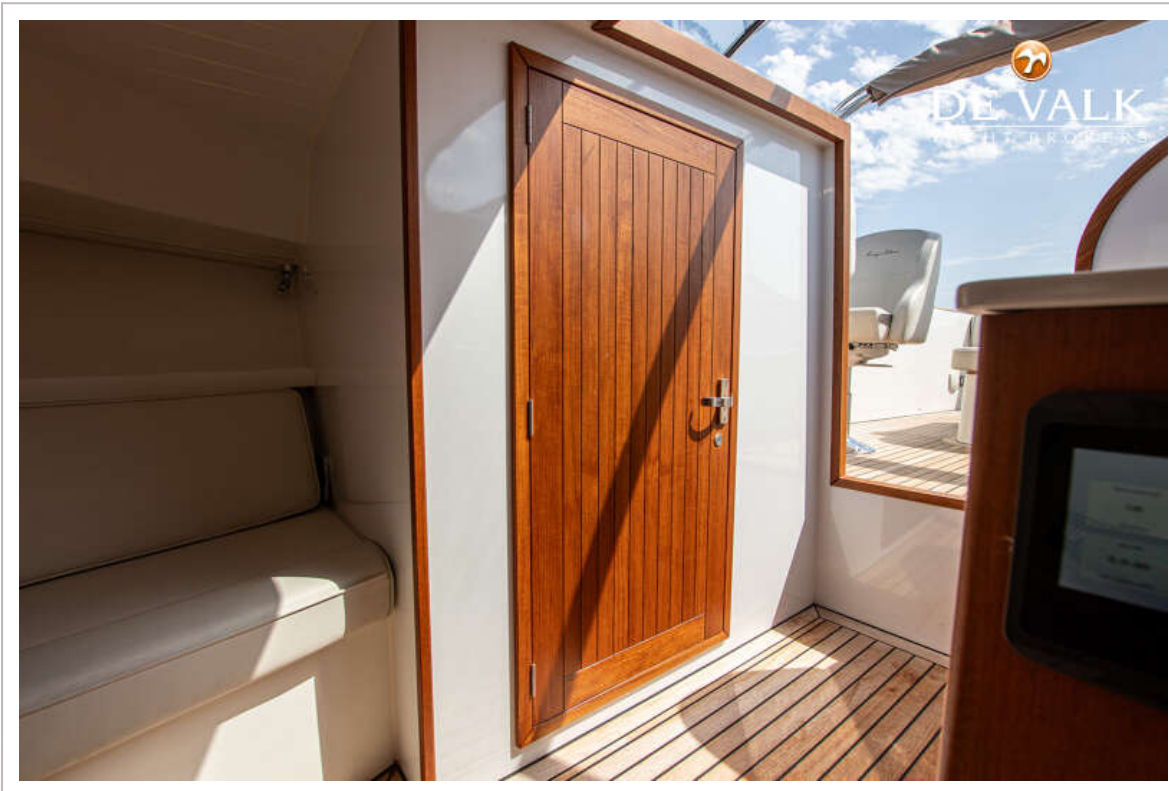
LONG ISLAND 33 RUNABOUT HYBRID



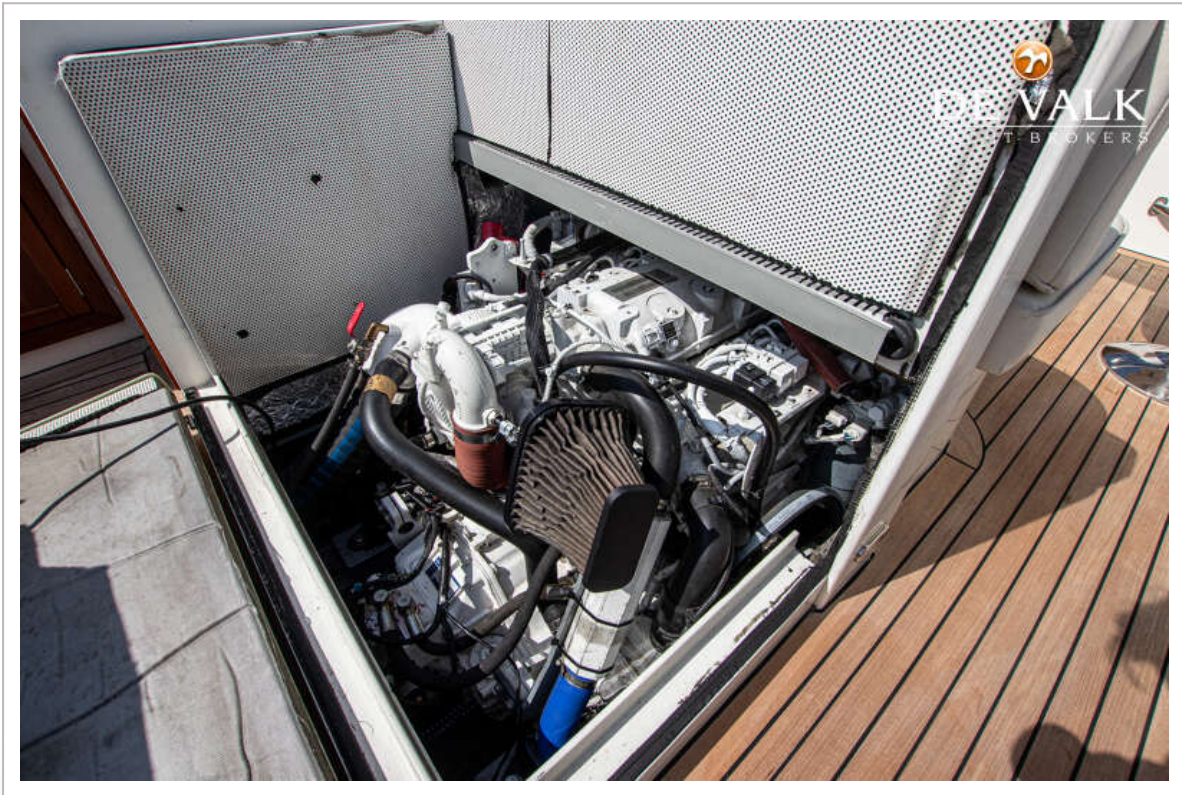
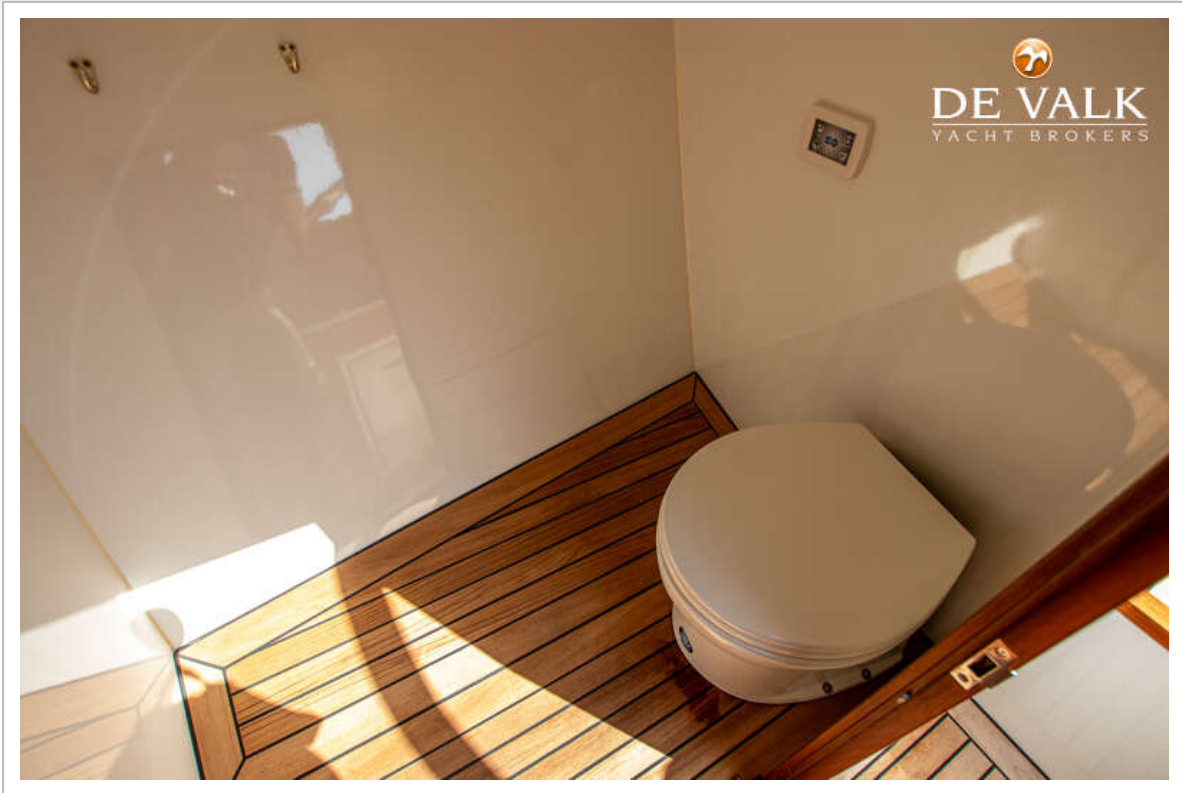
LONG ISLAND 33 RUNABOUT HYBRID



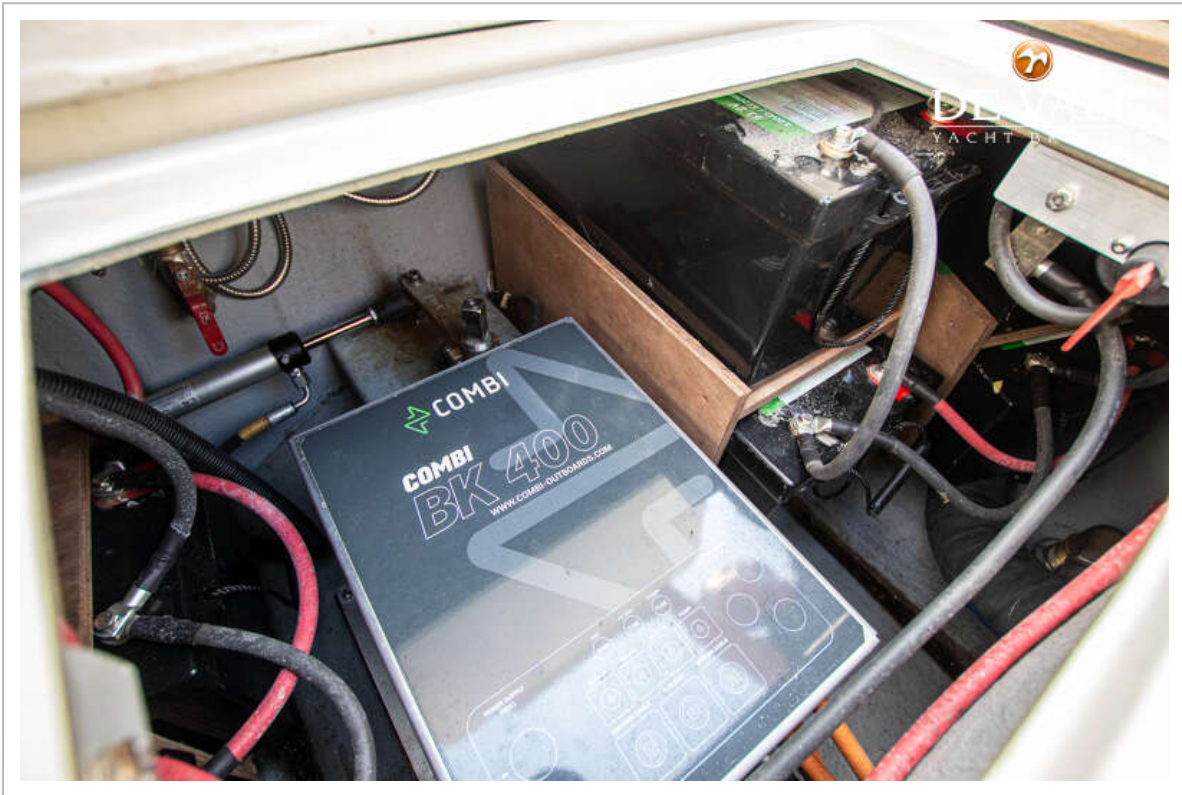
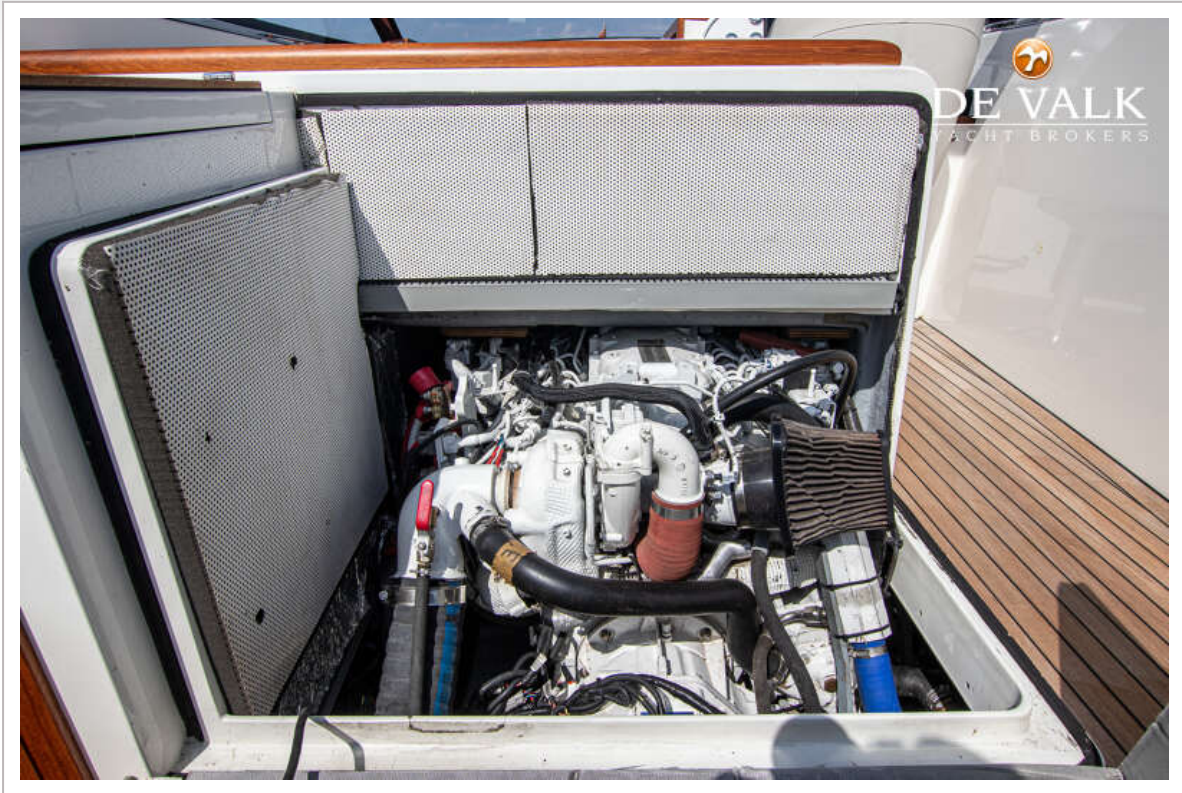
LONG ISLAND 33 RUNABOUT HYBRID



LONG ISLAND 33 RUNABOUT HYBRID



LONG ISLAND 33 RUNABOUT HYBRID



LONG ISLAND 33 RUNABOUT HYBRID

