



DE VALK  
YACHT BROKERS



GALEON 300 FLY



DE VALK  
YACHT BROKERS

BROKERAGE | CHARTER | BERTHS | FINANCE | INSURANCE | YACHT MANAGEMENT

# GALEON 300 FLY

## BROKER'S COMMENTS

The Galeon 300 Fly was designed with improved handling and stability, both with water-repellent features. She is fully equipped and very well maintained. The cockpit offers a long service platform, and the lounge has a spacious layout and a pleasant combination with the helm position. The interior design is in white and Alcantara wall decoration. In the cabins with toilets, the guests enjoy two double beds and a bath with toilet and shower. This beautiful Galeon 300 Fly is ready to go immediately.

*Ralph Weil*

## SPECIFICATIONS

<b>Dimensions</b>	10.40 x 2.99 x 0.95 (m)	<b>Builder</b>	Galeon
<b>Built</b>	2021	<b>Cabins</b>	2
<b>Material</b>	GRP	<b>Berths</b>	4
<b>Engine(s)</b>	1 x Mercrusier MD 3,0l diesel	<b>Hp/Kw</b>	270.00 (hp), 198.72 (kw)
<b>Asking price</b>	€ 249.500 (VAT Paid)	<b>Lying</b>	contact Berlin

## CONTACT

<b>Sales office</b>	De Valk Berlin	<b>Telephone</b>	+49 30 325 99 651
<b>Address</b>	Siegfried-Berger Str.13 12557 Berlin DE	<b>E-mail</b>	berlin@devalk.nl

## DISCLAIMER

These particulars are given in good faith as supplied but cannot be guaranteed.



# GALEON 300 FLY

## GENERAL

Model	GALEON 300 FLY
Type	motor yacht
LOA (m)	10,40
LWL (m)	8,99
Beam (m)	2,99
Draft (m)	0,95
Air draft min (m)	3,50
Headroom (m)	2,00
Year built	2021
Builder	Galeon
Country	Poland
Displacement (t)	5,3
CE norm	C
Hull material	GRP
Hull colour	white
Hull shape	V-shaped hull
Superstructure material	GRP
Rubbing strake	rubber
Deck material	GRP
Deck finish	non-skid moulded in
Cockpit deck finish	teak
Antifouling (year)	2024
Window material	tempered glass Windshield / Frontscheibe
Deckhatch	1
Portholes	4
Flybridge	yes
Flybridge cover	yes
Flybridge suncover	yes
Radar arch	yes
Fuel tank (litre)	415



Level indicator (fuel tank)	Analog
Freshwater tank (litre)	polyethylene 200
Level indicator (freshwater)	Analog
Blackwater tank (litre)	polyethylene 100
Level indicator (blackwater)	Analog
Blackwater tank extraction	deck extraction + pump
Greywater tank (litre)	polyethylene 86
Level indicator (greywater)	Analog
Wheel steering	hydraulic
Inside helm position	yes
Outside helm position	yes
Flybridge helm position	hydraulic
Extra info	extended bathing platform (80 cm) with teak decking
Extra info	The dinghy and bicycle shown are not part of the offer.

## ACCOMMODATION

Cabins	2
Berths	4
Interior	Artificial White Oak
Layout	2 cabins, 1 head
Floor	With carpet
Aft deck	Sliding bench convertible into a sun lounger
Deck saloon	yes
Headroom saloon (m)	2,00
Heating	diesel ducted hot air Webasto with outlets in all cabins
Dinette	yes
Sliding door to cockpit	yes
Galley	yes
Countertop	corian
Sink	stainless steel
Cooker	electric 2 burner induction working with shorepower and inverter



# GALEON 300 FLY

Fridge	Isotherm 85 l.
Hot water system	220V + engine Quick 40 l
Water pressure system	electrical
Hot water tap	Bathroom, pantry and deck shower
Owners cabin	double bed
Bed length (m)	2,00 x 1,60/1,80
Wardrobe	hanging and drawers
Bathroom	separate
Toilet	separate
Toilet system	electric
Wash basin	in the bathroom
Shower	In the bathroom
Guest cabin 1	double bed
Bed length (m)	2,00m x 1,80m
Wardrobe	hanging and drawers
Flybridge	2nd helm station, double bench seat, sun lounger, Teak Deck
Extra info	LED lights in the cockpit, steps and fly

## MACHINERY

No of engines	1
Make	Mercusier
Type	MD 3,0l
HP	270
kW	198.72
Fuel	diesel
Year installed	2021
Maximum speed (kn)	32
Cruising speed (kn)	24
Engine cooling system	freshwater heat exchanger
Drive	Z-drive
Engine controls	electrical



<b>Bowthruster</b>	electric
<b>Exhaust</b>	watercooled
<b>Manual bilge pump</b>	2
<b>Electric bilge pump</b>	3
<b>Start battery</b>	1 x 170AH
<b>Service battery</b>	2 x 220AH
<b>Bowthruster battery</b>	1 x 110
<b>Inverter</b>	yes
<b>Battery charger/inverter</b>	yes
<b>Wind generator</b>	Victron Multiplus 12/3000/120 12V 3000W 120A
<b>Shorepower</b>	with cable
<b>Trimtabs</b>	yes

## NAVIGATION

<b>Compass</b>	yes
<b>Depth sounder</b>	yes
<b>Log</b>	yes
<b>VHF</b>	Raymarine Ray 91 AIS (passiv) mit Handset für Fly
<b>Autopilot</b>	Raymarine Salon & Fly
<b>Rudder angle indicator</b>	Inboarding position & Fly Raymarine
<b>Plotter/GPS</b>	Inboarding position & Fly Raymarine MFD Axiom 9"
<b>AIS receiver</b>	yes
<b>Navigation lights</b>	BSH konform

## EQUIPMENT

<b>Cockpit cover</b>	yes
<b>Bimini</b>	Flybridge
<b>Winter cover</b>	new, for the entire ship
<b>Window cover</b>	Mesh, black
<b>Cockpit cushions</b>	yes
<b>Cockpit table</b>	yes



<b>Bathing platform</b>	extended (80 cm) with teak deck
<b>Boarding ladder</b>	stainless steel
<b>Transom door</b>	yes
<b>Deck shower</b>	warm & cold
<b>Anchor</b>	Delta
<b>Anchor chain</b>	Stainless Steel 25m
<b>Chain counter</b>	yes
<b>Windlass</b>	electrical With chain counter, and remote controll
<b>Sea railing</b>	stainless steel Two rows, 2 rijen, 2 reihig
<b>Grab rail (superstructure)</b>	stainless steel
<b>Wiper</b>	2 x
<b>Horn</b>	yes
<b>Fenders</b>	yes
<b>Mooring lines</b>	yes
<b>TV</b>	TV preparation in the salon
<b>Radio</b>	with 2 control panels (Salon & Fly) Fusion
<b>iPod connection</b>	yes
<b>Cockpit speakers</b>	2 x on Flybridge
<b>Speakers in salon</b>	2 x
<b>Fire extinguisher</b>	yes
<b>Extra info</b>	Dinghy mount "Tender Connect"





# GALEON 300 FLY





# GALEON 300 FLY



# GALEON 300 FLY

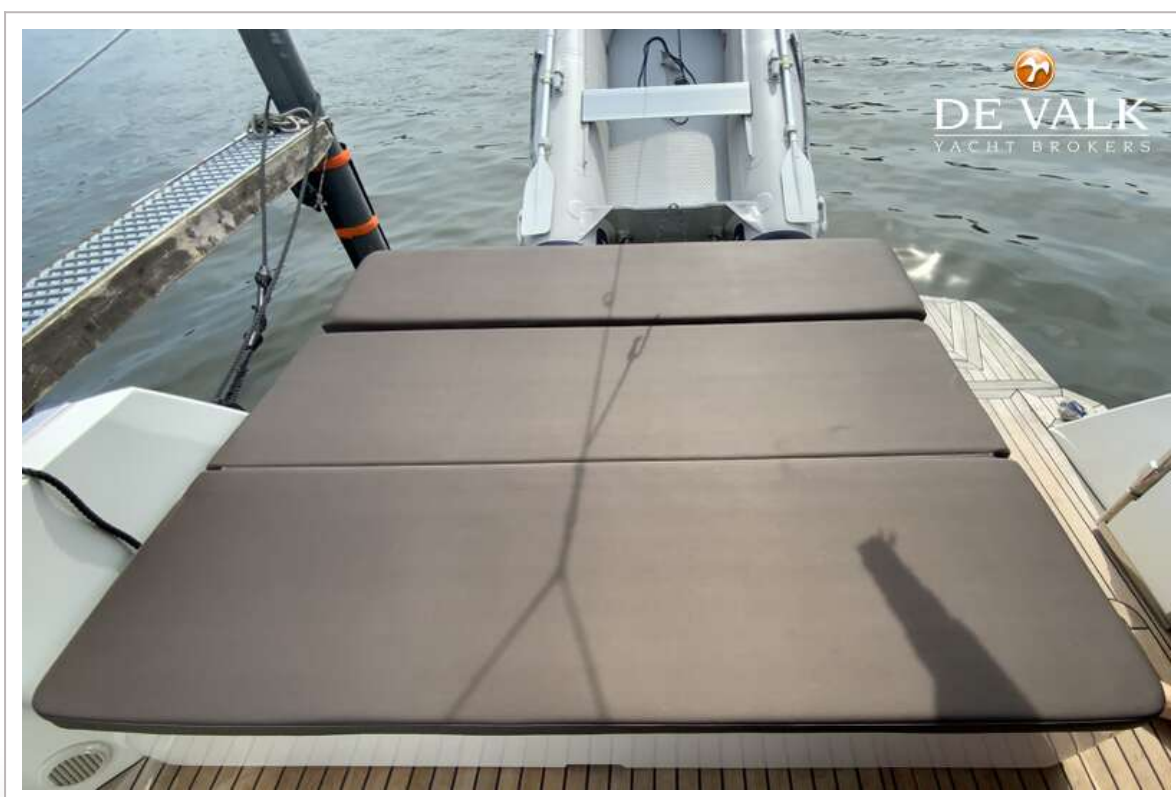




# GALEON 300 FLY



# GALEON 300 FLY





# GALEON 300 FLY

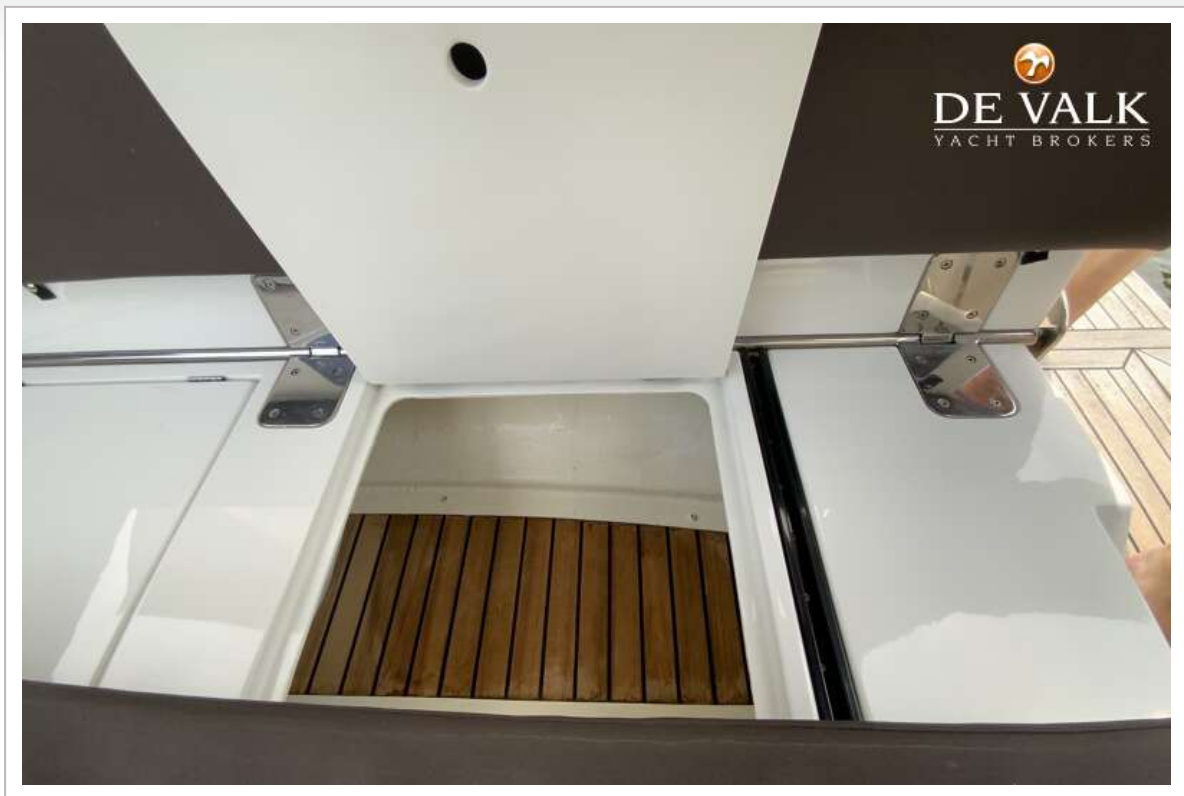


# GALEON 300 FLY





# GALEON 300 FLY

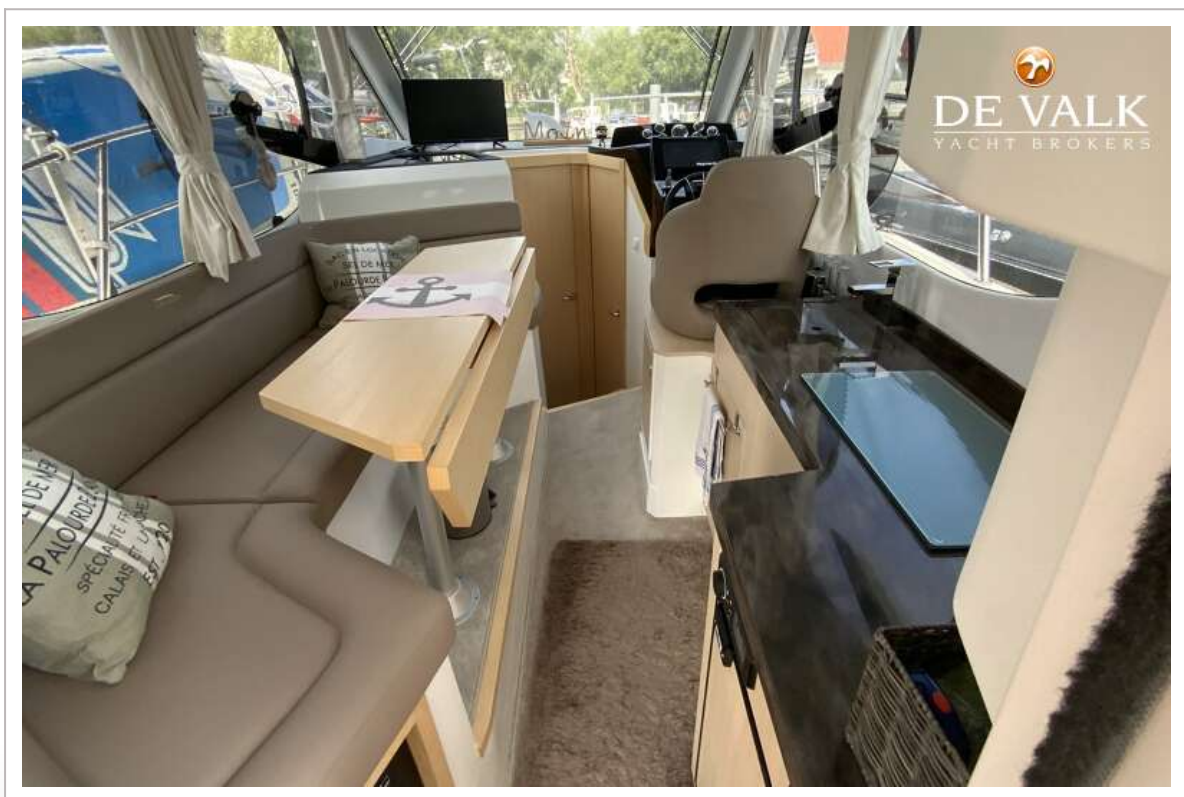




# GALEON 300 FLY

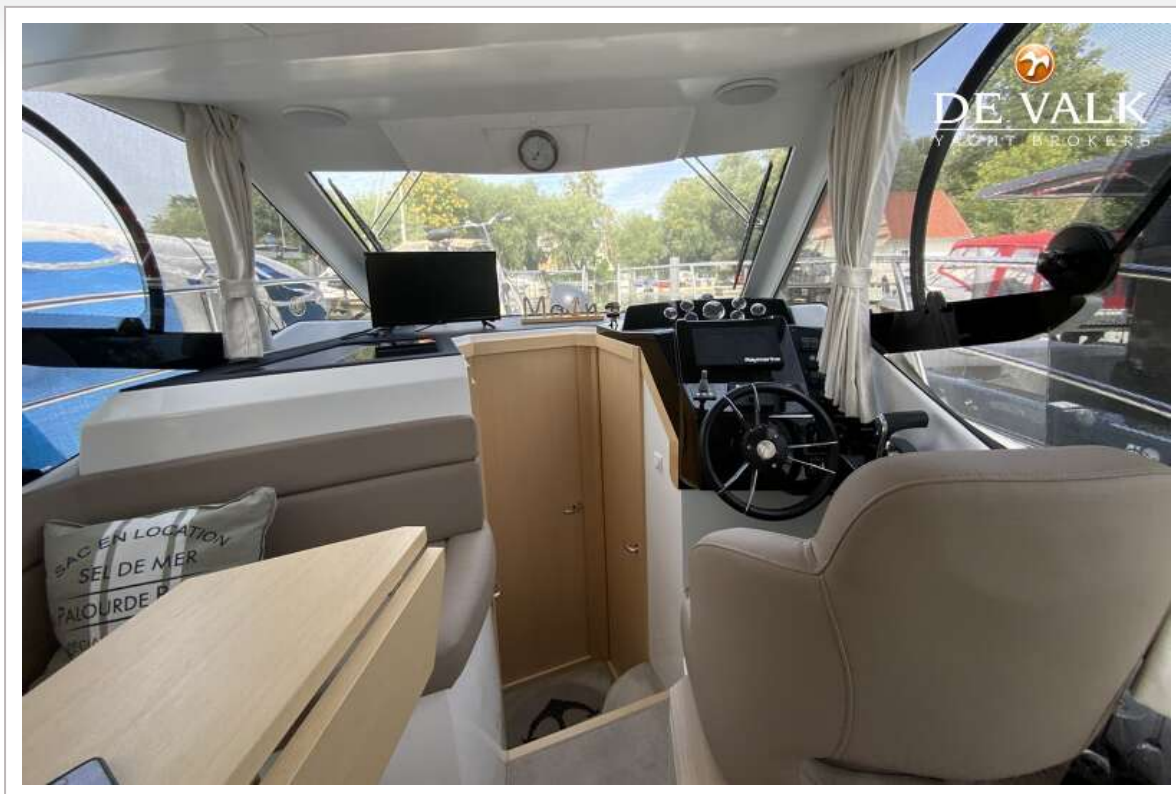


# GALEON 300 FLY





# GALEON 300 FLY



# GALEON 300 FLY





# GALEON 300 FLY



# GALEON 300 FLY

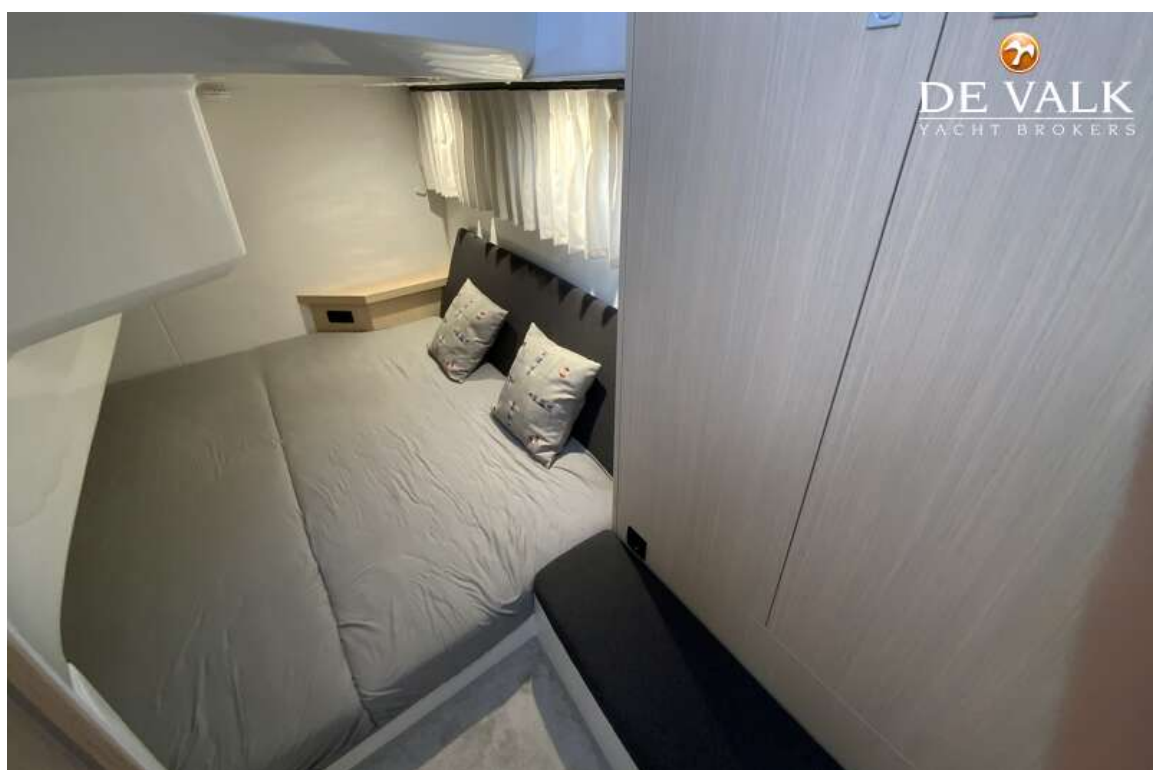


# GALEON 300 FLY

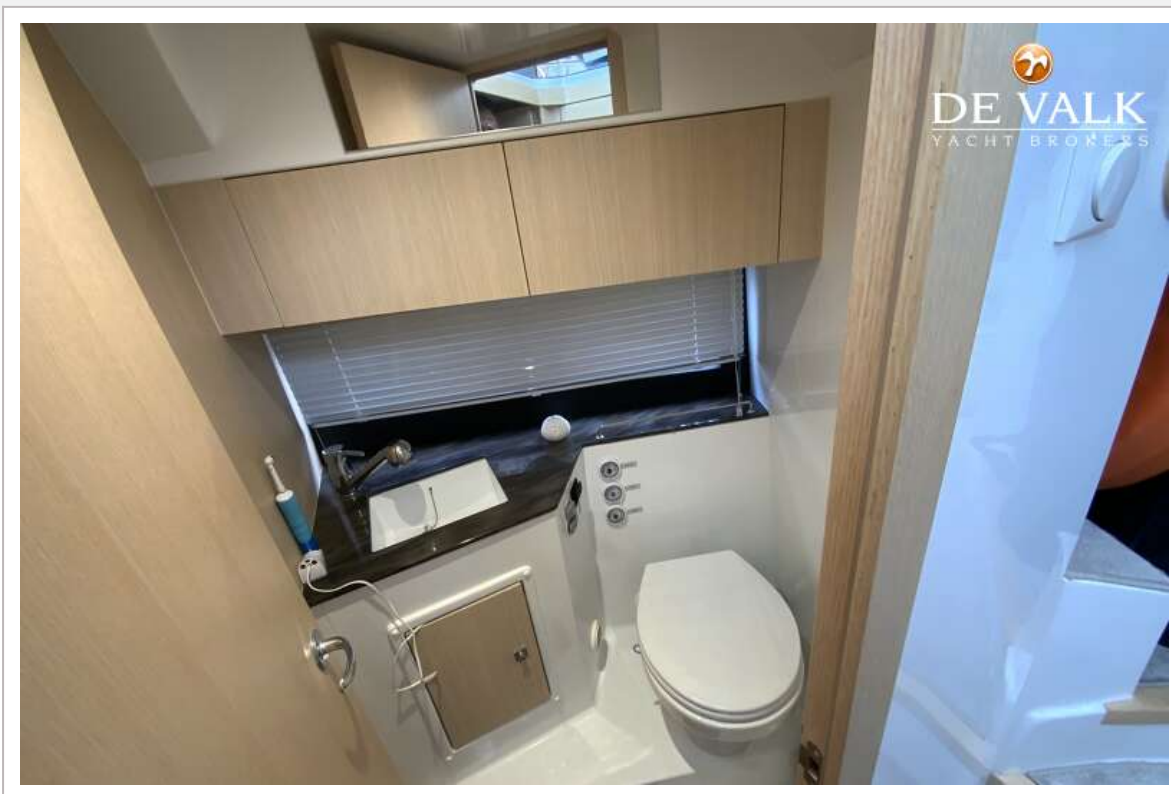




# GALEON 300 FLY



# GALEON 300 FLY







# GALEON 300 FLY



# GALEON 300 FLY

