



DE VALK
YACHT BROKERS



BAVARIA MOTOR BOATS 42 SPORT



DE VALK
YACHT BROKERS

BAVARIA MOTOR BOATS 42 SPORT

BROKER'S COMMENTS

This 2007 Bavaria 42 Sport is a comfortable and stylish sports cruiser, upgraded in 2022 with a brand-new Volvo Penta IPS propulsion system, renowned for its efficiency, maneuverability, and comfort. The sporty design combines sleek lines with a spacious interior. The cockpit of this Bavaria 42 Sport offers a generous seating area, a well-organized helm position, and a sundeck. Inside, the bright and well-maintained interior features two cabins, a full galley, and a cozy saloon. Thanks to IPS, mooring is exceptionally easy. Now available for viewing in Sint Annaland.

Nick Lanting

SPECIFICATIONS

Dimensions	13.40 x 4.28 x 1.20 (m)	Builder	Bavaria Yachtbau GmbH
Built	2007	Cabins	2
Material	GRP	Berths	5
Engine(s)	2 x Volvo Penta D6-370D-B IPS diesel	Hp/Kw	2 x 370.00 (hp), 272.32 (kw)
Asking price	Under Offer (VAT)	Lying	at sales office

CONTACT

Sales office	De Valk Sint Annaland B.V.	Telephone	+31 (0)166 601 000
Address	Koelhuisweg 4 4697 RM Sint Annaland NL	E-mail	sintannaland@devalk.nl

DISCLAIMER

These particulars are given in good faith as supplied but cannot be guaranteed.



GENERAL

Model	BAVARIA MOTOR BOATS 42 SPORT
Type	motor yacht
LOA (m)	13,40
Beam (m)	4,28
Draft (m)	1,20
Headroom (m)	2,20
Year built	2007
Builder	Bavaria Yachtbau GmbH
Country	Germany
Displacement (t)	11,2
CE norm	B
Hull material	GRP
Hull colour	white
Hull shape	deep-V
Superstructure material	GRP
Rubbing strake	stainless steel
Deck material	GRP
Deck finish	teak
Superstructure deck finish	non-skid moulded in
Cockpit deck finish	teak
Window material	polycarbonate
Deckhatch	yes
Radar arch	non collapsible
Fuel tank (litre)	1500
Level indicator (fuel tank)	yes
Freshwater tank (litre)	410
Level indicator (freshwater)	yes
Blackwater tank (litre)	2 x
Level indicator (blackwater)	yes
Blackwater tank extraction	deck extraction + uw line



Wheel steering	powersteer
More info on hull	Underwaterbody new primers + antifouling 2021
Extra info	Through-hull fittings + seacocks toilet replaced 2024.

ACCOMMODATION

Cabins	2
Berths	5
Interior	mahogany
Floor	woodprint
Open cockpit	yes
Saloon	yes
Headroom saloon (m)	2,20
Heating	diesel ducted hot air Webasto
Navigation center	yes
Aft Cabin	yes
Dinette	yes
Sliding door to cockpit	yes
Galley	yes
Countertop	plastic
Sink	stainless steel
Cooker	induction Novy 2 burner (2021) + grill in cockpit
Microwave/oven combi	Sharp
Fridge	Waeco in Galley (2021) + Coolmatic in cockpit
Freezer	In fridges
Hot water system	220V + engine
Water pressure system	electrical
Owners cabin	double bed
Bed length (m)	2,05 x 1,60
Wardrobe	hanging and shelves
Bathroom	en suite
Toilet	en suite



BAVARIA MOTOR BOATS 42 SPORT

Toilet system	electric Jabsco
Wash basin	in the bathroom
Shower	en suite
Guest cabin 1	twin single
Bed length (m)	2,00 x 0,85
Wardrobe	hanging and shelves
Bathroom	en suite
Toilet	en suite
Toilet system	electric Jabsco
Wash basin	in the bathroom
Shower	en suite
Wet bar	With grill, fridge and washbasin

MACHINERY

No of engines	2
Make	Volvo Penta
Type	D6-370D-B IPS
HP	370
kW	272.32
Fuel	diesel
Year installed	2007
Engine hours	1118
Engine cooling system	freshwater heat exchanger
Drive	IPS
Engine controls	electrical Volvo Penta handles + IPS joystick
Bowthruster	electric Side Power
Manual bilge pump	yes
Electric bilge pump	yes
Electrical installation	12V / 220V
Generator	Fischer Panda 6,5 kVA
Running hours generator	147



Start battery	yes
Service battery	4 x
Generator battery	yes
Battery monitor	Mastervolt
Battery charger	Mastervolt 12-50 + Mastervolt 12-100
Inverter	Mastervolt Mass Sine 12/2000
Shorepower	with cable
Trimtabs	QL
Extra info	IPS-drive of both engines replaced in 2022

NAVIGATION

Compass	yes
Depth sounder	On Garmin plotter (2015)
VHF	Garmin (2015)
VHF handheld	Icom
Rudder angle indicator	yes
Plotter	Garmin (2015)
Electronic chart(s)	yes
AIS transponder	(2015)
Searchlight	Marinco with remote control (2015)

EQUIPMENT

Fixed windscreen	yes
Cockpit cover	yes
Bimini	In cockpitcover
Cockpit cushions	Yes + front deck cushions
Cockpit table	yes
Bathing platform	yes
Boarding ladder	stainless steel
Deck shower	Hot + cold on swimming platform
Anchor	CQR Plough



BAVARIA MOTOR BOATS 42 SPORT

Anchor chain	yes
Windlass	electrical Quick (2023)
Dinghy	rigid inflatable Grand S250
Outboard	Yamaha 6
Davits	Hurley marine H2O
Davits controls	manual
Sea railing	stainless steel
Grab rail (superstructure)	stainless steel
Lifebuoy	yes
Wiper	2 x
Radar reflector	yes
Fenders	yes
Mooring lines	yes
TV	Samsung in salon + JVC in owners cabin + Quali in guest cabin
TracVision ball	TV6
Radio-cd player	Jensen with cockpit control
Cockpit speakers	yes
Speakers in salon	yes
Fire extinguisher	yes
Extinguisher in engine room	New 2021



BAVARIA MOTOR BOATS 42 SPORT



BAVARIA MOTOR BOATS 42 SPORT



BAVARIA MOTOR BOATS 42 SPORT



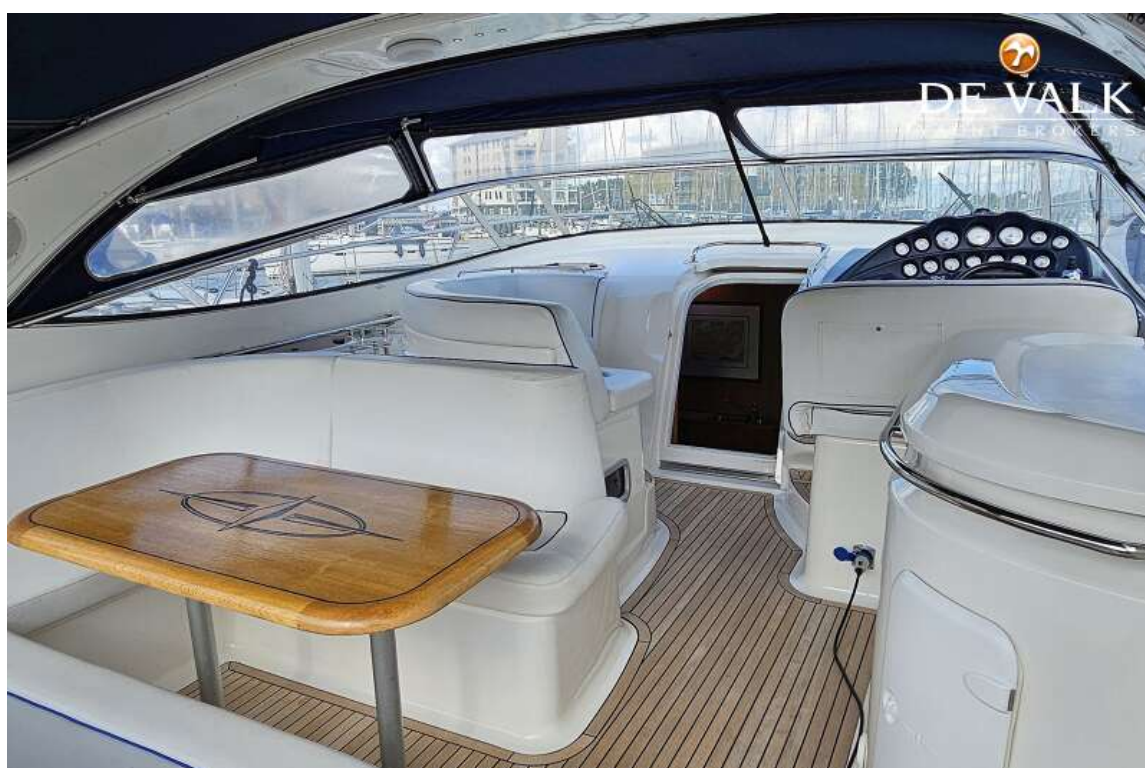
BAVARIA MOTOR BOATS 42 SPORT



BAVARIA MOTOR BOATS 42 SPORT



BAVARIA MOTOR BOATS 42 SPORT



BAVARIA MOTOR BOATS 42 SPORT



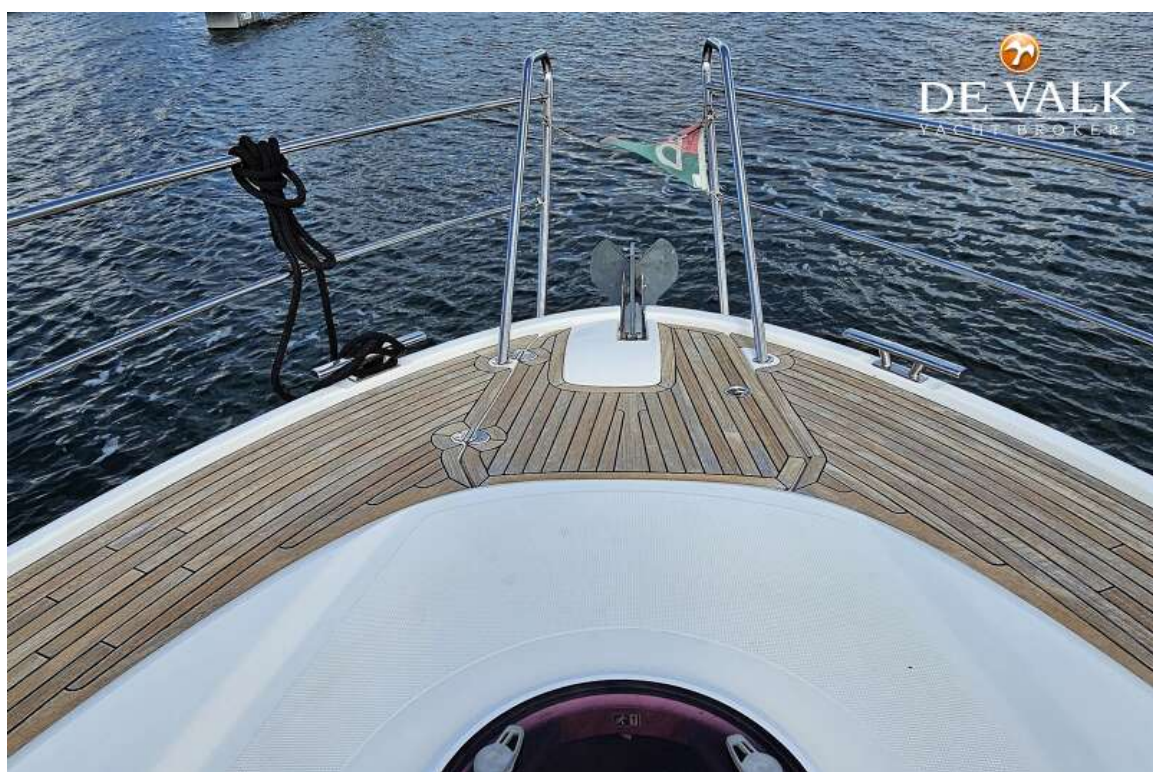
BAVARIA MOTOR BOATS 42 SPORT



BAVARIA MOTOR BOATS 42 SPORT



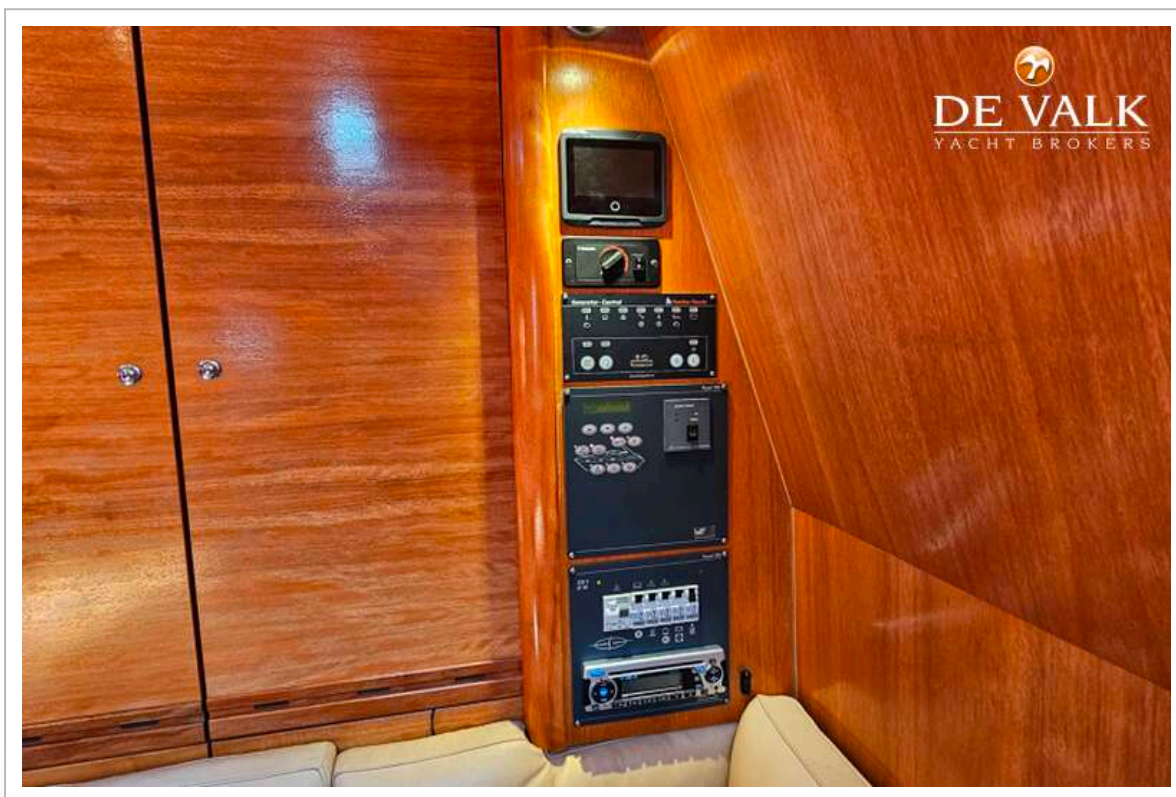
BAVARIA MOTOR BOATS 42 SPORT



BAVARIA MOTOR BOATS 42 SPORT



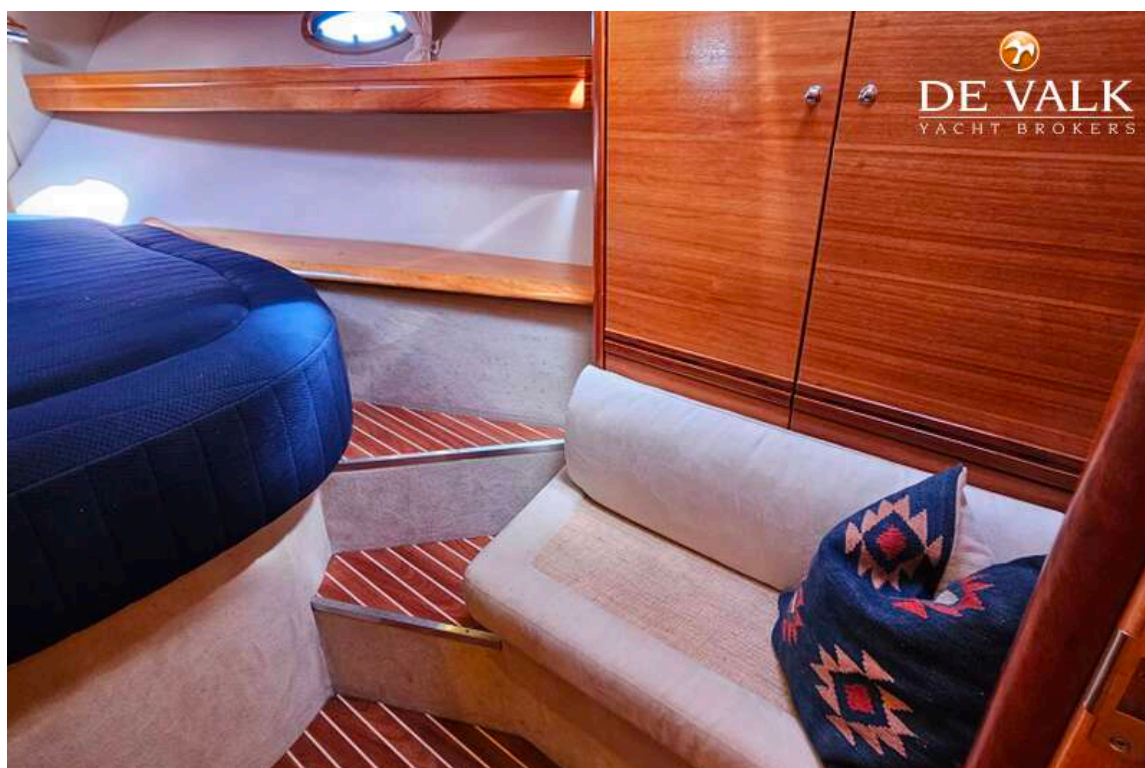
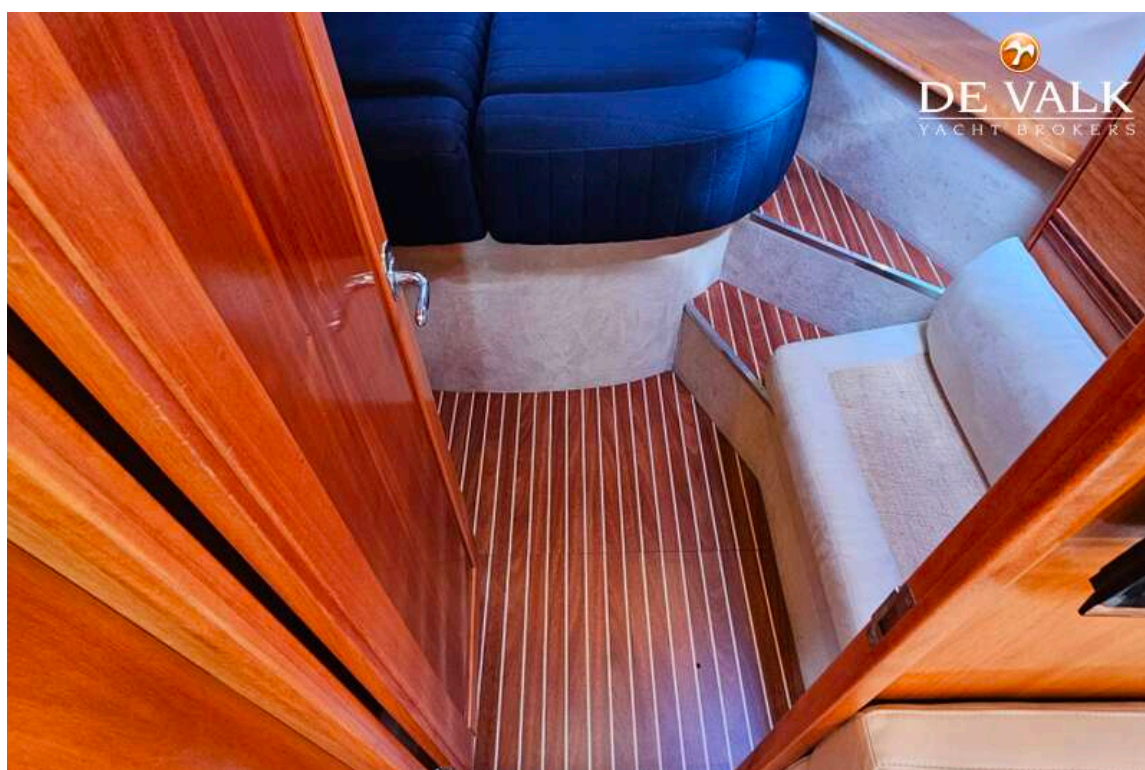
BAVARIA MOTOR BOATS 42 SPORT



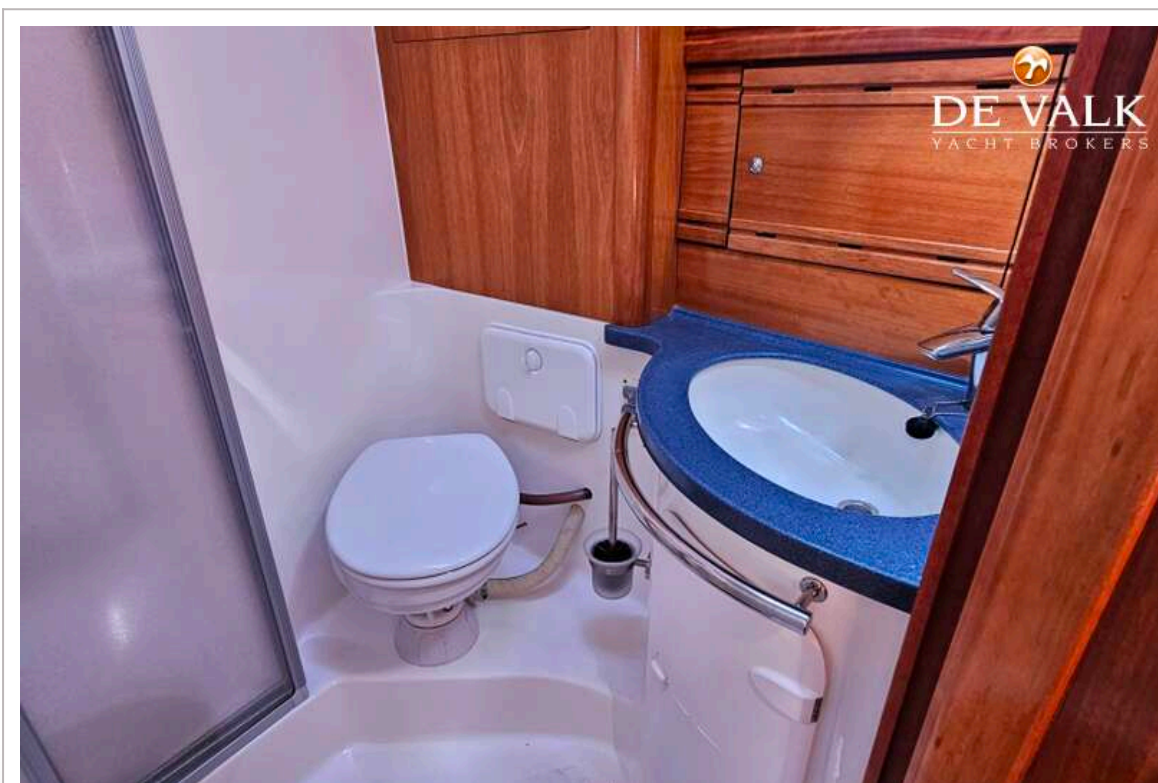
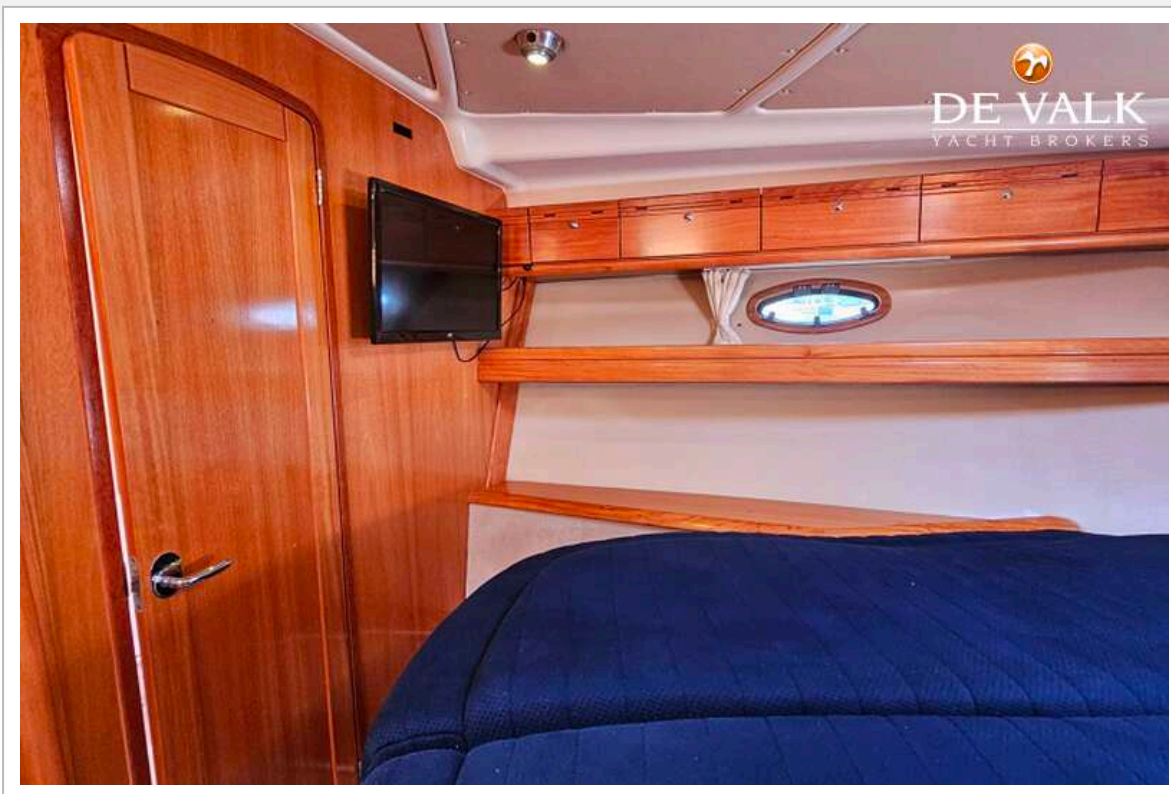
BAVARIA MOTOR BOATS 42 SPORT



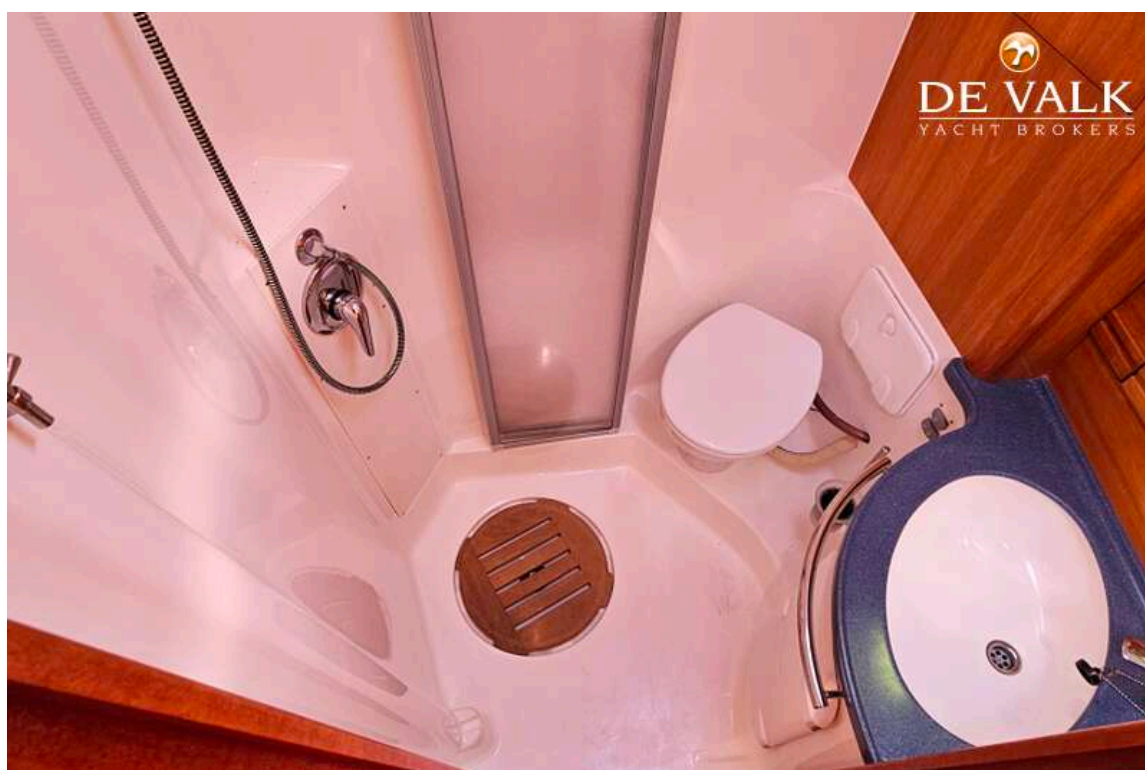
BAVARIA MOTOR BOATS 42 SPORT



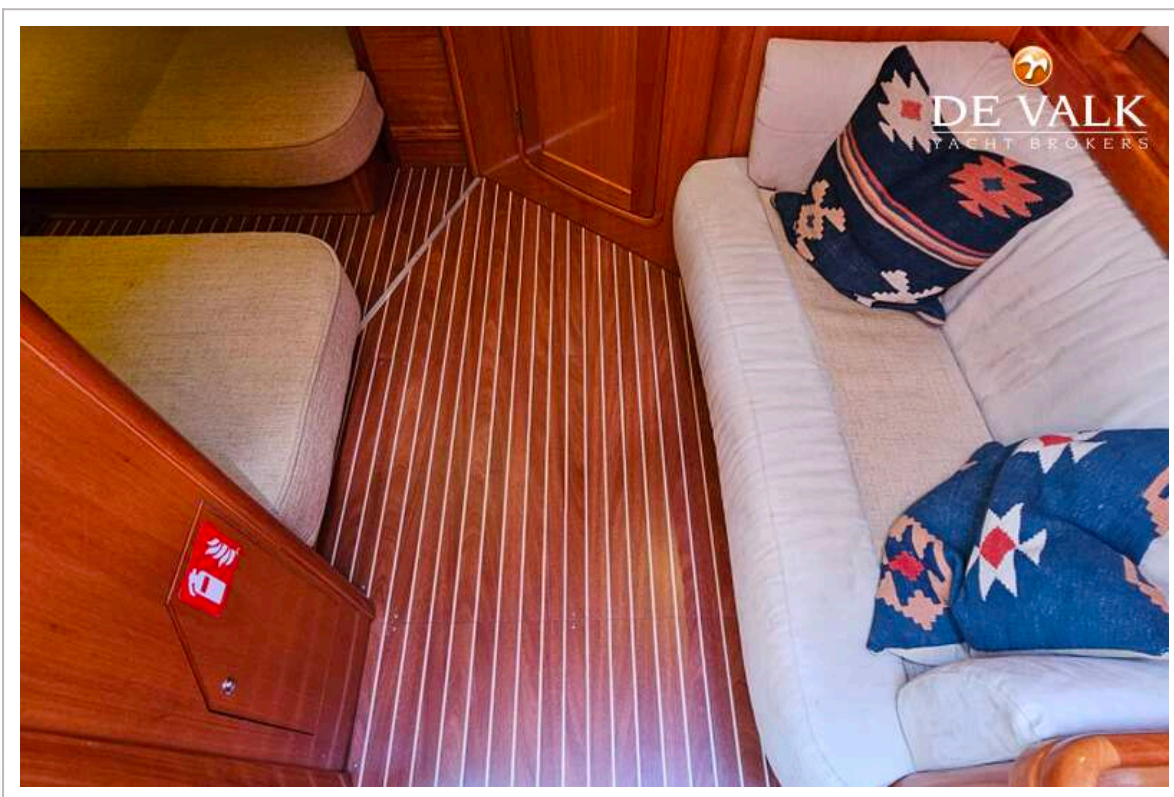
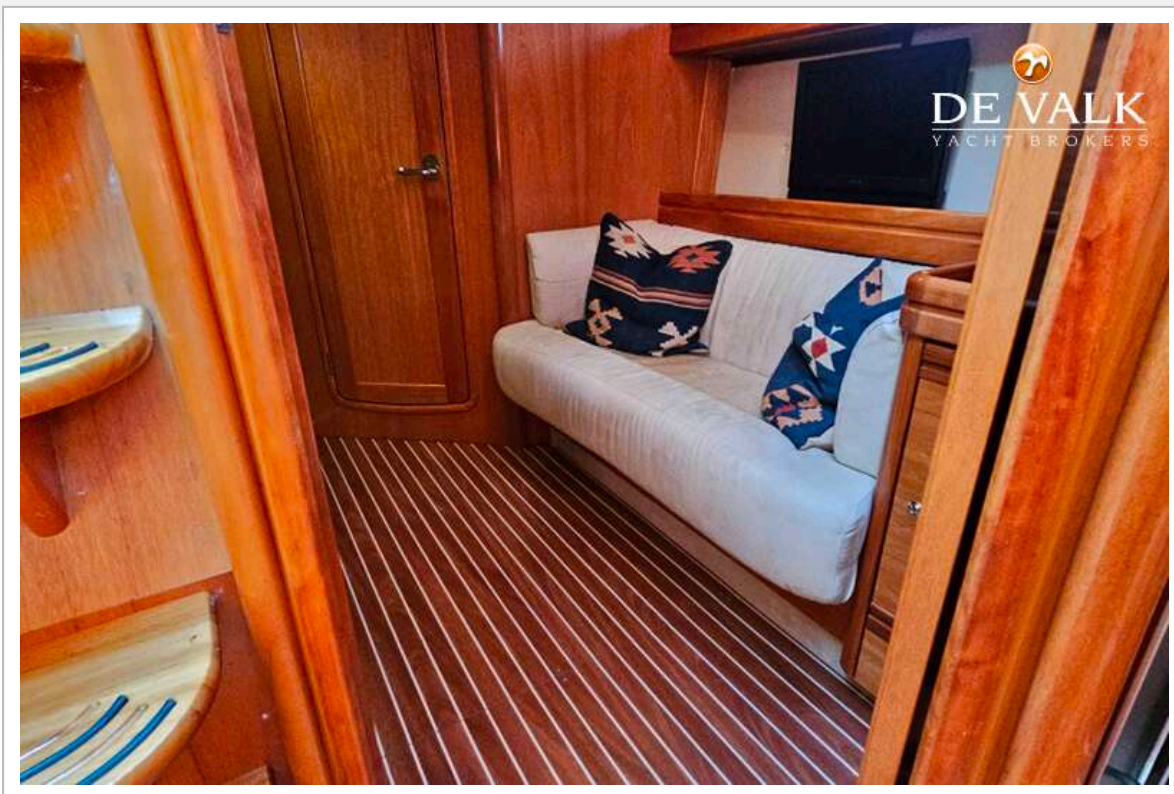
BAVARIA MOTOR BOATS 42 SPORT



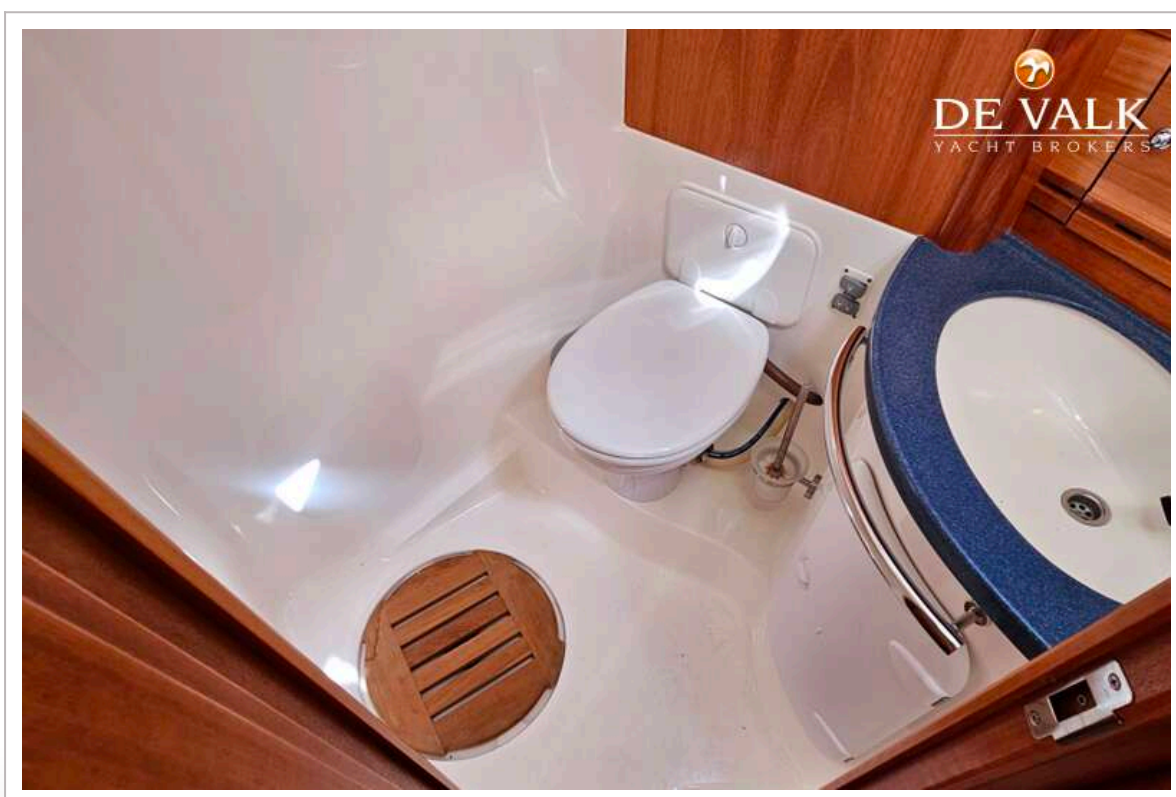
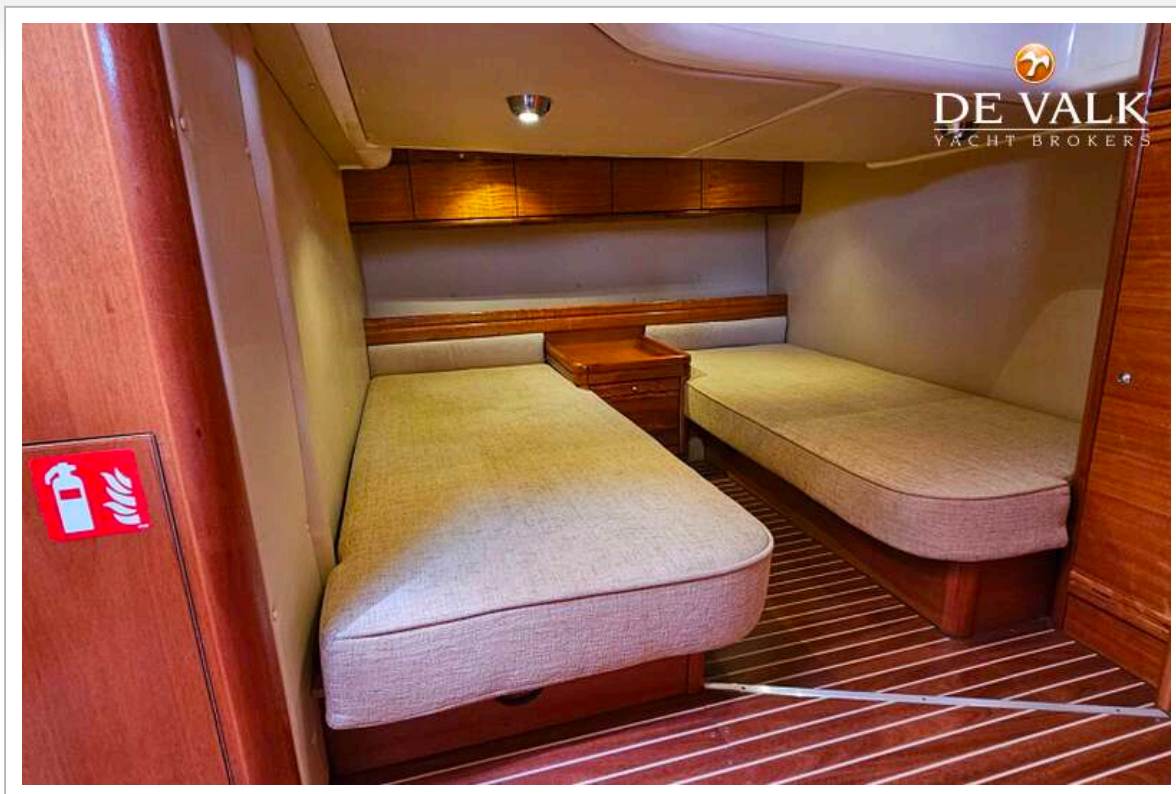
BAVARIA MOTOR BOATS 42 SPORT



BAVARIA MOTOR BOATS 42 SPORT



BAVARIA MOTOR BOATS 42 SPORT



BAVARIA MOTOR BOATS 42 SPORT

