



HALLBERG RASSY 45

HALLBERG RASSY 45

BROKER'S COMMENTS

Super maintained Hallberg Rassy 45 with fully rebuilt mast and rigging including new Elvstrøm sails. Designed by Germán Frers. This mid-cockpit yacht offers a spacious and comfortable layout, featuring a saloon with two lounge chairs and a corner seat, all elegantly finished in mahogany. The Hallberg Rassy 45 is celebrated for its excellent sailing performance, solid Scandinavian build quality, and safe offshore handling. Equipped with a fixed doghouse, furling mainsail, genoa, and cutter rig, it provides superb control and ease of handling, making it ideal for extended cruising.

Hans Visser

SPECIFICATIONS

Dimensions	14.28 x 4.34 x 1.88 (m)	Builder	HALLBERG-RASSY VARVS AB
Built	1993	Cabins	3
Material	GRP	Berths	6
Engine(s)	1 x Volvo Penta TMD 31B diesel	Hp/Kw	95.00 (hp), 69.83 (kw)
Asking price	€ 269.000 (VAT Paid)	Lying	at sales office

CONTACT

Sales office	De Valk Hindeloopen B.V.	Telephone	+31 514 52 40 00
Address	Oosterstrand 1 8713 JS Hindeloopen NL	E-mail	hindeloopen@devalk.nl

DISCLAIMER

These particulars are given in good faith as supplied but cannot be guaranteed.



HALLBERG RASSY 45

GENERAL

Model	HALLBERG RASSY 45
Type	sailing yacht
LOA (m)	14,28
LWL (m)	11,60
Beam (m)	4,34
Draft (m)	1,88
Air draft (m)	21,00
Headroom (m)	1,95
Year built	1993
Builder	HALLBERG-RASSY VARVS AB
Country	Sweden
Designer	Germán Frers
Displacement (t)	16
Ballast (tonnes)	lead 6,4 tonnes
CE norm	NA
Hull material	GRP
Hull colour	white blue striping
Hull shape	round-bilged
Keel type	fin keel with bulb
Superstructure material	GRP
Rubbing strake	stainless steel
Deck material	GRP
Deck finish	teak new 2018
Superstructure deck finish	teak
Cockpit deck finish	teak
Antifouling (year)	2023
Dorades	4x
Window frame	aluminium
Window material	polycarbonate
Deckhatch	3x



HALLBERG RASSY 45

Portholes	aluminium
Fuel tank (litre)	stainless steel 590 liters
Level indicator (fuel tank)	yes
Freshwater tank (litre)	stainless steel 1000 liters in total, divided over 4 tanks.
Level indicator (freshwater)	yes
Blackwater tank (litre)	stainless steel Two tanks, 80 liters each
Blackwater tank extraction	pump
Wheel steering	cable steering Solimar
Emergency tiller	yes

ACCOMMODATION

Cabins	3
Berths	6
Interior	mahogany In perfect condition
Floor	teak and holly with carpet
Saloon	With two lounge chairs
Headroom saloon (m)	1,96 m
Heating	diesel ducted hot air 1x Webasto Autotherm Air 4D new 2023
Navigation center	yes
Chart table	yes
Aft Cabin	yes
Galley	L-shaped
Countertop	wood
Sink	stainless steel Double
Cooker	electric Force10 4 burner stainless steel stove
Oven	built in under the cooker
Microwave	Electrolux
Fridge	Frigomatic Water cooled (with light)
Freezer	Frigomatic Water cooled can also be used as a fridge
Hot water system	220V + engine 60 liter boiler
Water pressure system	electrical new stainless steel pressure tank



HALLBERG RASSY 45

Manual and/or foot pump	yes
Owners cabin	double bed + single bed aft cabin
Bed length (m)	2,00 x 1,20 m + 2,05 x 0,90 m
Wardrobe	hanging/drawers/shelves
Bathroom	en suite
Toilet	Jabsco
Toilet system	manual
Wash basin	yes
Shower	yes
Guest cabin 1	single bed forward starboard side
Bed length (m)	2,00 x 0,50 m
Wardrobe	hanging and drawers
Guest cabin 2	bunk bed forward port side
Bed length (m)	2,00 x 0,50 m
Wardrobe	hanging and drawers
Bathroom	shared
Toilet	Jabsco
Toilet system	electric
Wash basin	yes
Shower	yes

MACHINERY

No of engines	1
Make	Volvo Penta
Type	TMD 31B
HP	95
kW	69.83
Fuel	diesel
Maximum speed (kn)	8
Cruising speed (kn)	7
Engine cooling system	freshwater heat exchanger Overhauled in 2024



HALLBERG RASSY 45

Drive	shaft
Shaft seal	Volvo
Engine controls	bowden cable
Gearbox	mechanical
Bowthruster	hydraulic
Exhaust	watercooled
Propeller type	fixed
Propeller blades	3
Propeller shaft material	stainless steel
Shaft lubrication	water
Manual bilge pump	yes
Electric bilge pump	2x
Electrical installation	12 V 24 V 220 V
Generator	Northern Light 5 Kw
Running hours generator	Approx. 1059
Start battery	1x 12V
Service battery	24 volt 4x AGM 270Ah
Generator battery	1x
Battery monitor	BMV 501
Battery charger	2x CTEK 12V
Battery charger/inverter	Victron Phoenix Multi 24V 70Amp 3000W
Wind generator	Aerogen
Solar panel	Philips 24V / 110W
Shorepower	with cable
Watermaker	Spectra 50 L/hr (filled with preservation fluid since 2020)
Extra info	1x 12V / 100A alternator 1x 24V / 100A alternator
Extra info	Main engine injectors replaced 2024

NAVIGATION

Compass	Suunto D135
Electric compass	Raymarine new 2024



HALLBERG RASSY 45

Multi control display	Raymarine new 2024
Depth sounder	Raymarine new 2024
Log	Raymarine new 2024
Windset	Raymarine 2024
VHF	Simrad RS87
VHF handheld	Raymarine 101E
Autopilot	New 2022 Raymarine P70S inside & outside remote control
Rudder angle indicator	Raymarine new 2024
Radar	Raymarine 4kw / 36Nm
GPS	Raymarine new 2024
Plotter	Raymarine E80 (not installed)
Radar/GPS/plotter	Raymarine new 2023 at helm
Electronic chart(s)	yes
AIS transceiver	ICOM IC 706 MK IIG inside
EPIRB	MC Murdo smartfind
Navigation lights	yes

EQUIPMENT

Fixed hardtop	yes
Cockpit cover	yes
Bimini	yes
Sun awning	yes
Cockpit cushions	yes
Cockpit table	yes
Bathing platform	yes
Boarding ladder	stainless steel
Bow ladder	yes
Gangway	yes
Anchor	Delta
Anchor chain	80 mtr.
Anchor 2	Para Sea with 100 m line and spare CQR anchor.



HALLBERG RASSY 45

Windlass	electrical Lofrans 1500W
Davits	stainless steel
Davits controls	manual
Sea railing	yes
Grab rail (superstructure)	yes
Railing side opening gates	yes
Pushpit	yes
Pulpit	yes
Danbuoy	With light and line
Rope cutter	yes
Fenders	yes
Mooring lines	yes
Spare parts	Many spare parts available
Tools	yes
TV	With DVD
Radio-cd player	Pioneer
Cockpit speakers	yes
Speakers in salon	yes
Fire extinguisher	yes
Auto extinguisher system	In engine room

RIGGING

Rigging	sloop-cutter
Standing rigging	wire Replaced 2024
Brand mast	Proctor
Material mast	aluminium coated Sandblasted, white-coated in 2024
Spreaders	2 sets
Mainsail	Elvstrøm new 2024, spare 2010
Stoway mast	Electric hydraulic, engine rebuilt in 2024 & hydraulic outhaul
Cutterstay	yes
Genoa	Elvstrøm new 2024 (69 m ²), also spare from 2010



HALLBERG RASSY 45

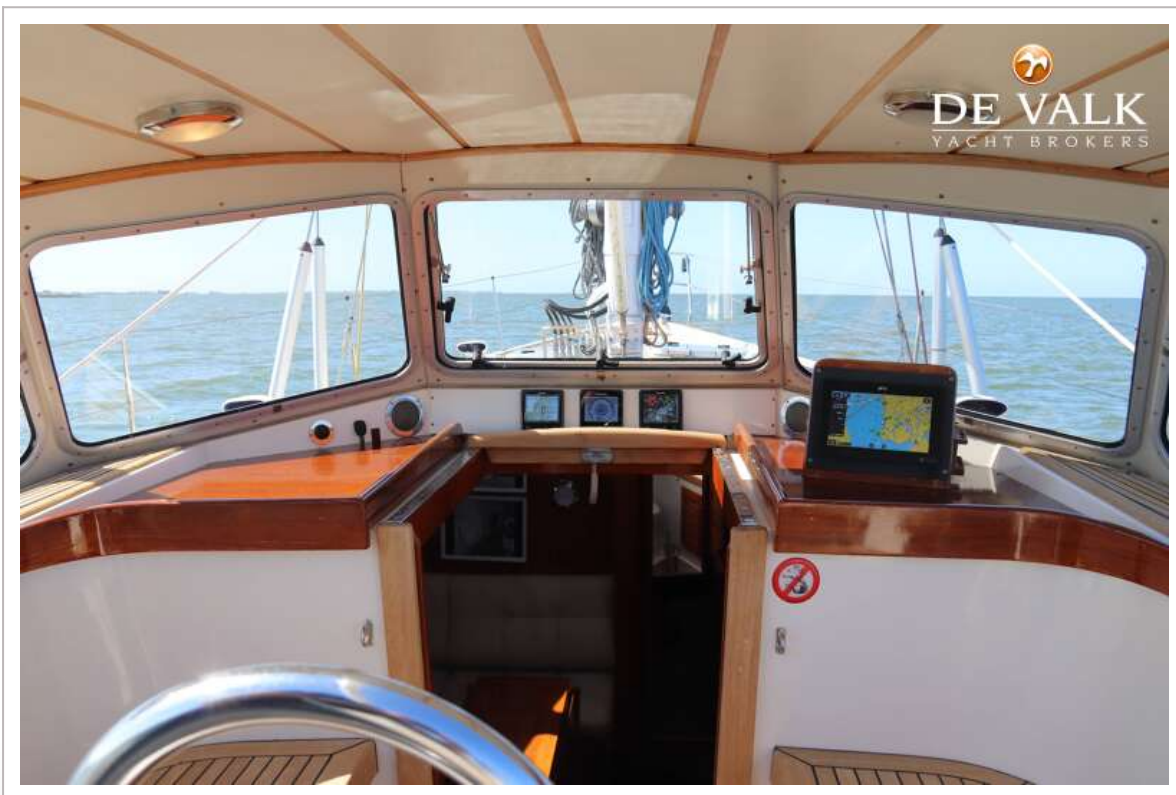
Genoa furler	Reckmann Electric hydraulic system
Cutter jib	Elvstrøm new 2024, spare 2009
Cutter furler	Reckmann Electric hydraulic system
Booster	Equipped with squeezer
Backstay adjuster	hydraulic Navtec manual
Boomvang	mechanical Fully repainted and rebuilt in 2022
Primary sheet winch	2x Lewmar 46 ST
Genoa sheetwinches	2x Lewmar 66ST
Halyard winches	2x Lewmar 46 ST
Winchcovers	Also for furling motors and mast foot
Spi-pole	aluminium Repainted white: 2024 Stored against the mast
Extra info	Removable bowsprit
Extra info	running rigging, also replaced in 2024



HALLBERG RASSY 45



HALLBERG RASSY 45



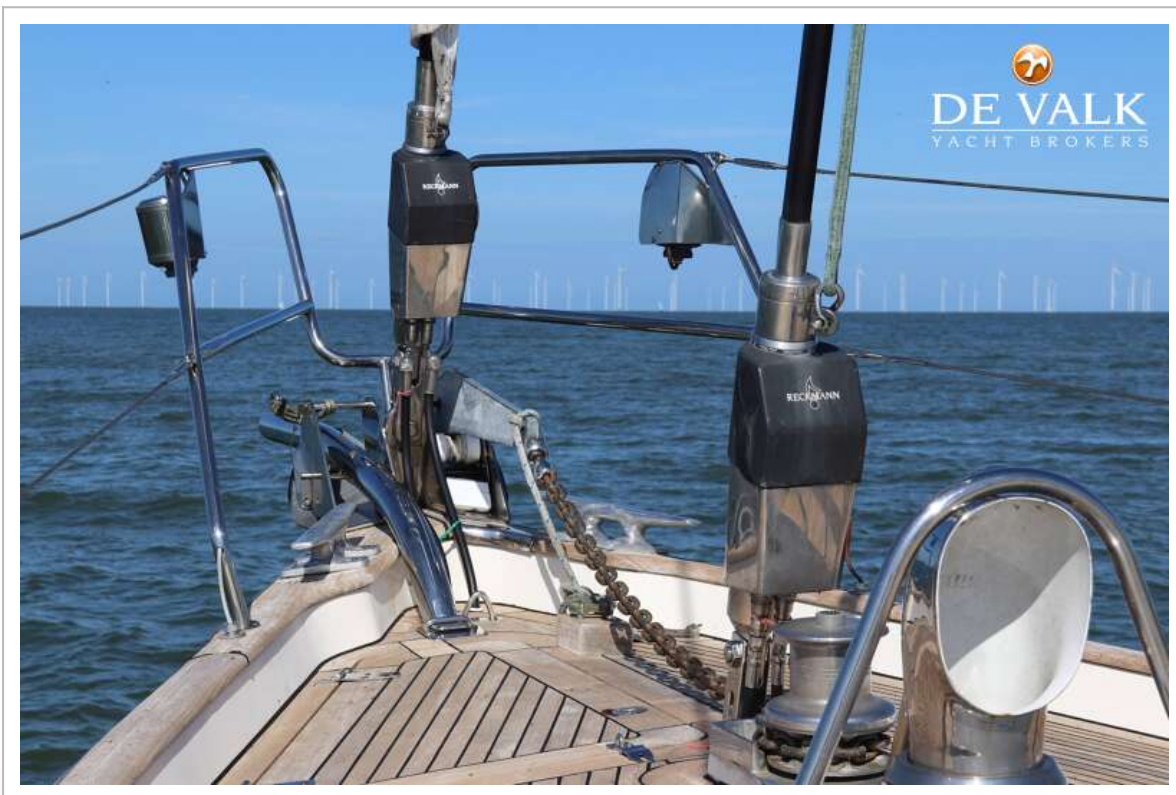
HALBERG RASSY 45



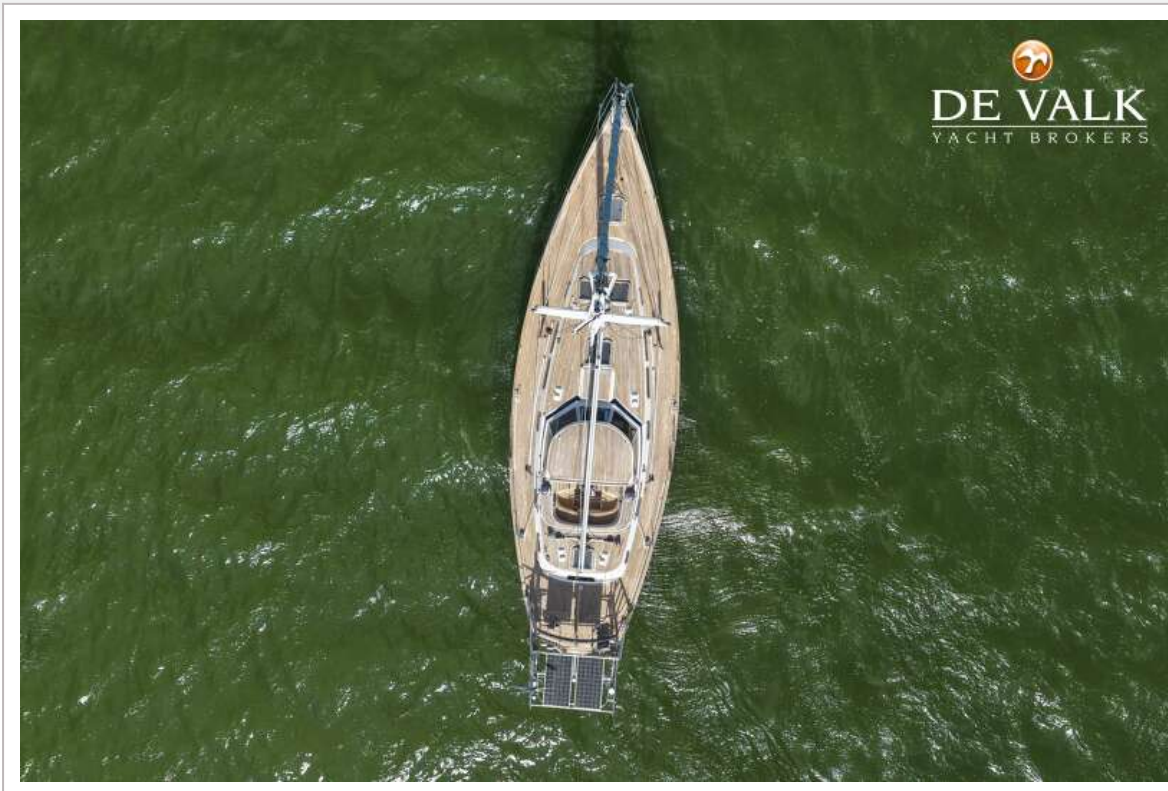
HALLBERG RASSY 45



HALLBERG RASSY 45



HALLBERG RASSY 45



HALLBERG RASSY 45



HALLBERG RASSY 45



HALLBERG RASSY 45



HALLBERG RASSY 45



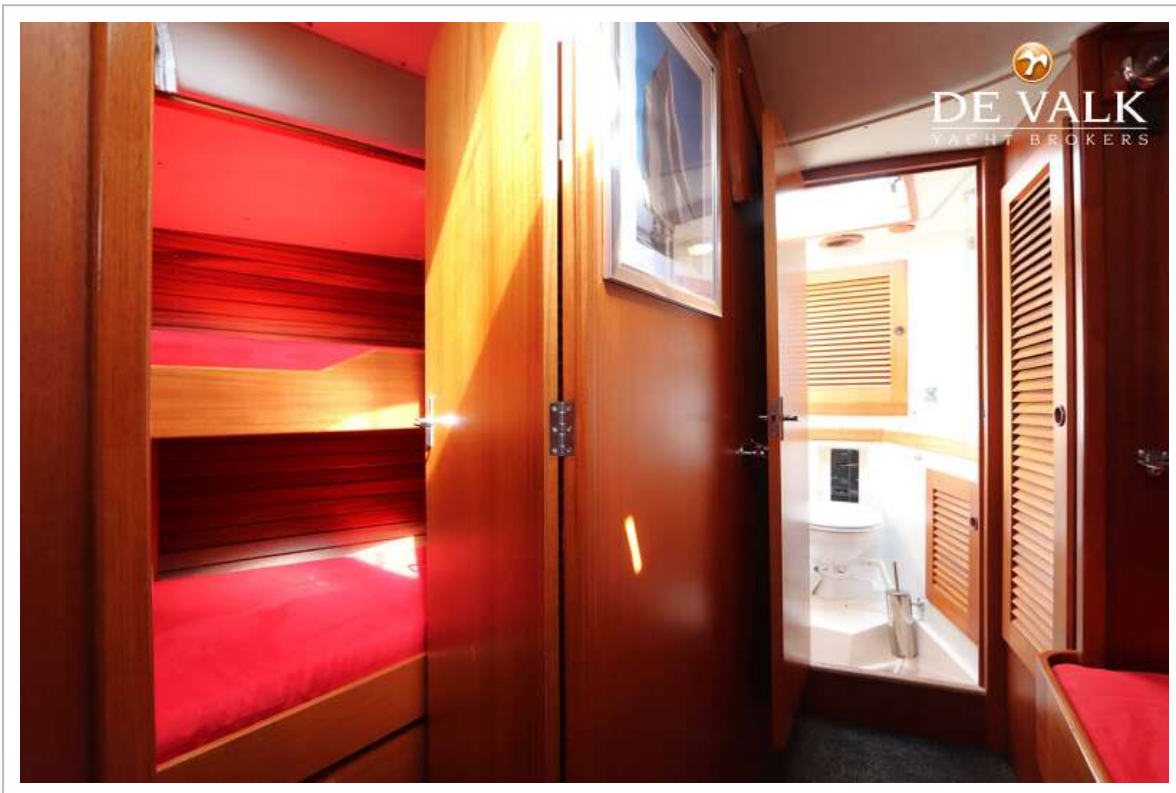
HALLBERG RASSY 45



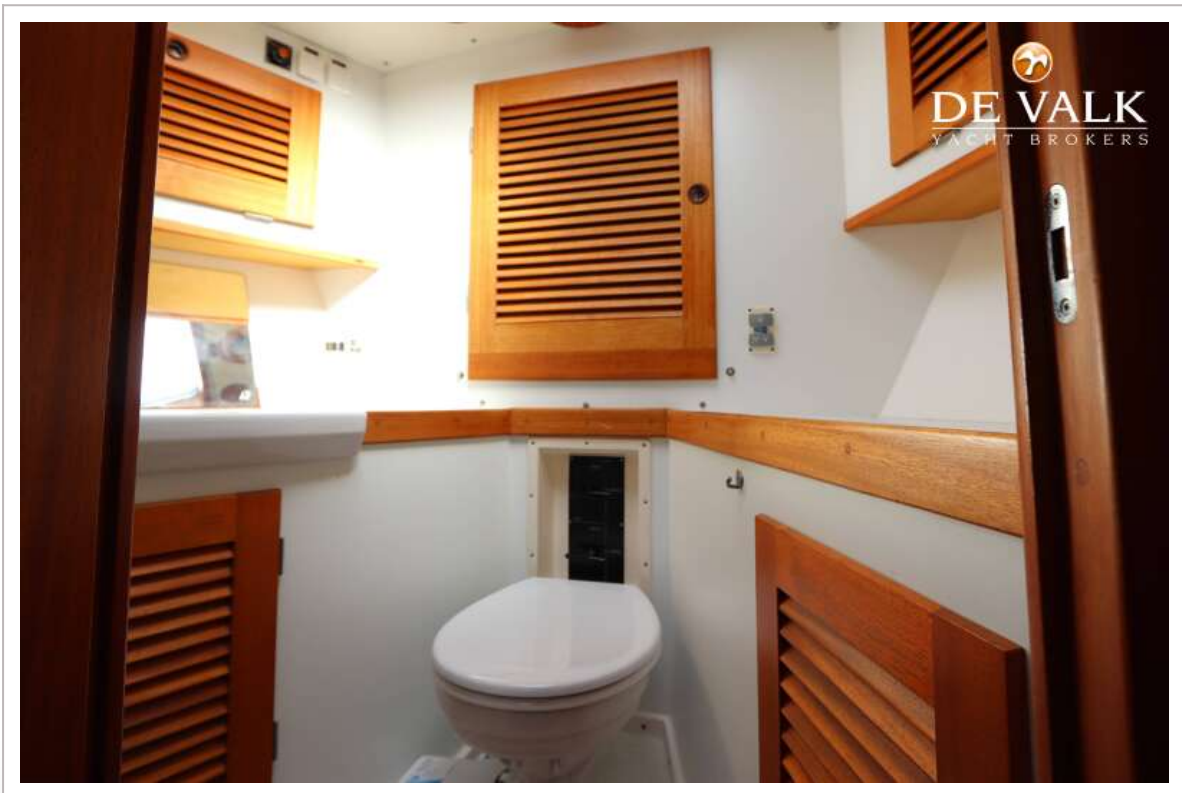
HALLBERG RASSY 45



HALLBERG RASSY 45



HALLBERG RASSY 45



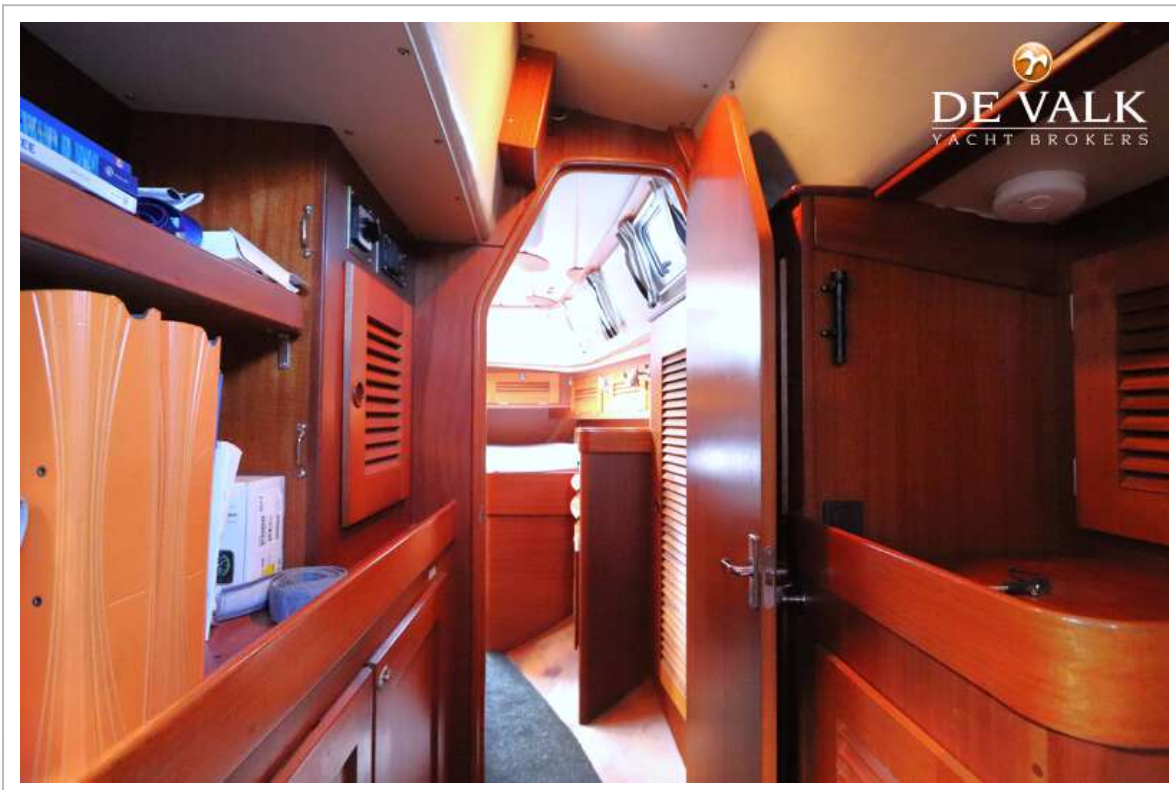
HALLBERG RASSY 45



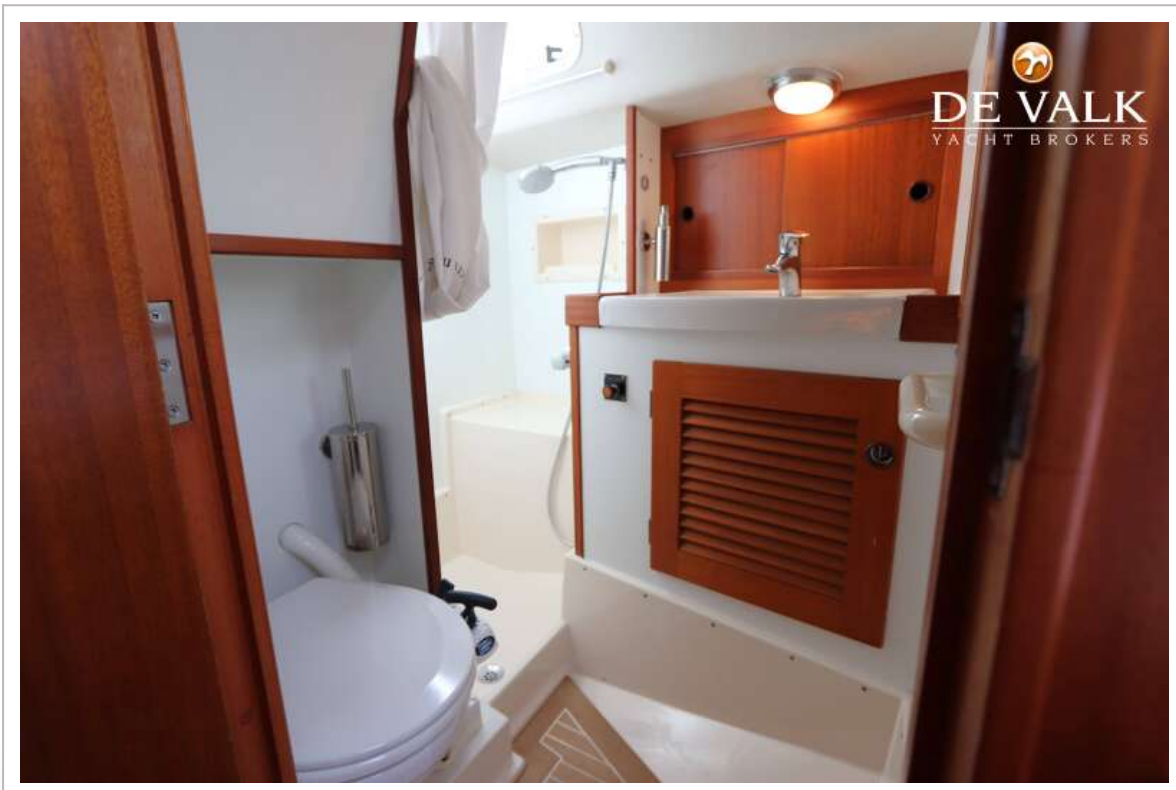
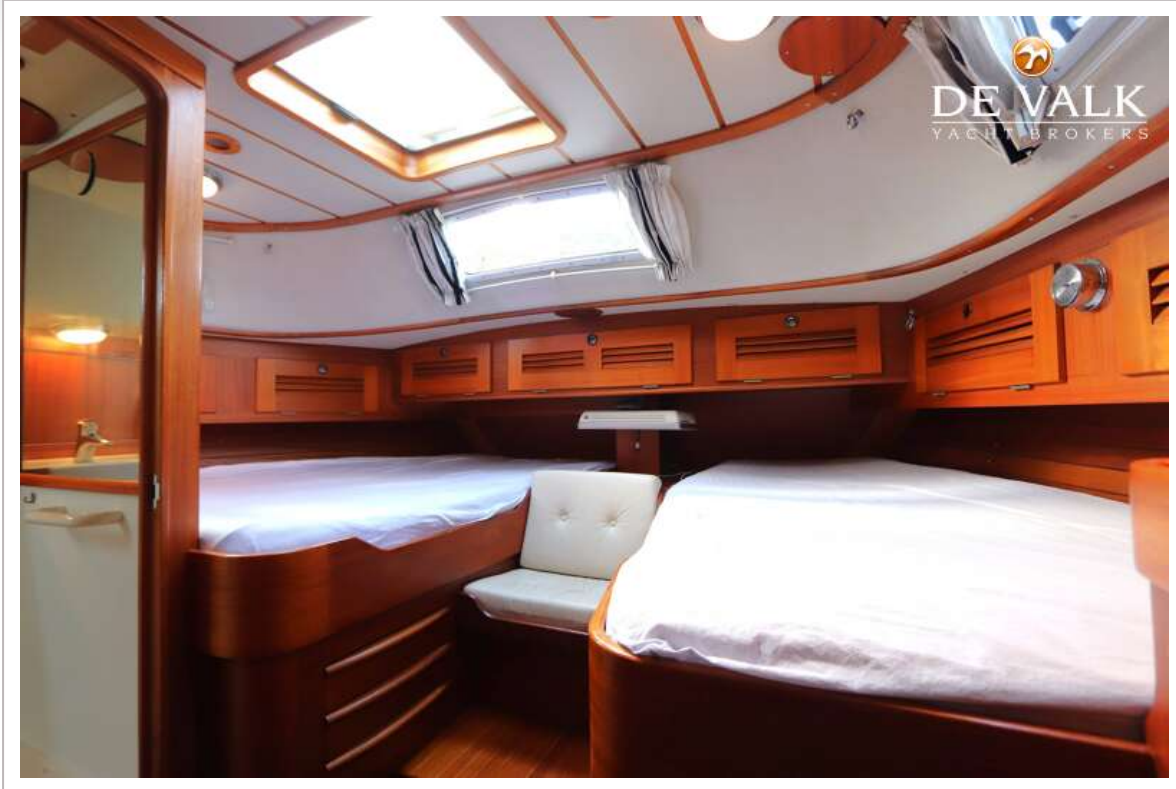
HALLBERG RASSY 45



HALLBERG RASSY 45



HALLBERG RASSY 45



HALLBERG RASSY 45

