



APREAMARE 11

BROKER'S COMMENTS

For more than half a century, Apreamare has not only produced boats, but it has produced authentic jewels. Their gozzo's are real treasures, handcrafted and well thought out whilst constructed with the most modern and advanced equipment. Highly skilled carpenters and shipwrights work closely together on each model of the standard range as well as the custom built boats. Apreamare today enjoys the reputation of being one of the most prestigious Italian sailing brands in the world, catering to a clientele with a passion for craftsmanship, luxury and exclusivity.

Mark Hesselmans

SPECIFICATIONS

Dimensions	10.75 x 3.95 x 0.70 (m)	Builder	Aprea Mare
Built	2000	Cabins	2
Material	GRP	Berths	4
Engine(s)	2 x Volvo TAMD 63 diesel	Hp/Kw	2 x 370.00 (hp), 271.00 (kw)
Asking price	€ 179.500 (VAT Paid)	Lying	at sales office

CONTACT

Sales office	De Valk Loosdrecht B.V.	Telephone	+31 (0)35 582 90 30
Address	't Breukeleveense Meentje 6 1231LM Loosdrecht / Wijdemeren NL	E-mail	loosdrecht@devalk.nl

DISCLAIMER

These particulars are given in good faith as supplied but cannot be guaranteed.



GENERAL

Model	APREAMARE 11
Type	motor yacht
LOA (m)	10,75
LWL (m)	9,20
Beam (m)	3,95
Draft (m)	0,70
Air draft (m)	3,10
Headroom (m)	1,95
Year built	2000
Builder	Apra Mare
Country	Italy
Designer	Spadolini
Displacement (t)	8
CE norm	B
Hull material	GRP
Hull colour	green
Hull shape	deep-V
Superstructure material	GRP
Rubbing strake	stainless steel
Deck material	GRP
Deck finish	synthetic teak June 2025
Superstructure deck finish	paint
Cockpit deck finish	synthetic teak June 2025
Antifouling (year)	2025
Window frame	stainless steel
Window material	glass
Deckhatch	yes
Portholes	stainless steel
Radar arch	collapsible
Fuel tank (litre)	stainless steel 500



Fuel tank 2 (litre)	stainless steel 500
Level indicator (fuel tank)	Tankwatch 4
Freshwater tank (litre)	stainless steel 300
Level indicator (freshwater)	yes
Blackwater tank (litre)	GRP 50
Wheel steering	hydraulic
Outside helm position	hydraulic
Extra info	New exterior varnish October 2025

ACCOMMODATION

Cabins	2
Berths	4
Interior	cherry High gloss finished
Floor	teak and holly
Open cockpit	yes
Saloon	yes
Headroom saloon (m)	1,95
Heating	Condaria Climate Organizer
Air-conditioning	reverse cycle airco Condaria Climate Organizer
Dinette	L-shaped
Opening door to aft deck	yes
Galley	yes
Countertop	corian
Sink	stainless steel
Cooker	electric Can 2-burner
Extractor	Vortrice
Microwave/oven combi	Smeg
Fridge	with freezer compartment Indel B
Hot water system	220V + engine New boiler August 2025
Water pressure system	electrical
Owners cabin	double bed New mattresses in 2022



Bed length (m)	1,95
Wardrobe	hanging/drawers/shelves
Bathroom	shared
Toilet	shared
Toilet system	electric
Wash basin	in the bathroom
Shower	shared
Guest cabin 1	bunk bed
Bed length (m)	1,85
Wardrobe	hanging and drawers
Extra info	Lights replaced for LED

MACHINERY

No of engines	2
Make	Volvo
Type	TAMD 63
HP	370
kW	271
Fuel	diesel
Year installed	2000
Maximum speed (kn)	30,00
Cruising speed (kn)	24,00
Engine hours	550
Engine cooling system	freshwater heat exchanger
Drive	V-drive
Shaft seal	yes
Engine controls	bowden cable
Gearbox	hydraulic ZF
Bowthruster	electric Vetus (2025 new propeller)
Exhaust	watercooled
Propeller type	fixed 2025 replaced



Propeller shaft material	stainless steel
Shaft lubrication	water
Electric bilge pump	yes
Electrical installation	12/230V
Generator	Morse 3,5 kW
Running hours generator	376
Batteries	2021
Start battery	2x Varta 12V 190Ah
Service battery	yes
Generator battery	New november 2025
Battery monitor	yes
Battery charger	Mastervolt 12V/50A
Shorepower	with cable
Trimtabs	Revised 2025
Extra info	Engines serviced in 2024

NAVIGATION

Compass	Ritchie
Electric compass	On autopilot
Depth sounder	Raymarine
Log	Raymarine Hybridtouch 2017
Fish finder	Raymarine Hybridtouch 2017
VHF handheld	Raymarine RayMic 260E
Autopilot	Raymarine
Rudder angle indicator	VDO
Radar/GPS/plotter	Raymarine Hybridtouch 2017
Navigation lights	yes
Searchlight	2024
Extra info	Quick anchoring control

EQUIPMENT



Fixed windscreen	SST Frame
Sprayhood	yes
Cockpit cover	yes
Sun awning	yes
Cockpit cushions	New June 2025
Cockpit chairs	New June 2025
Bathing platform	Teak
Boarding ladder	stainless steel
Gangway	Opacmare 160 kg hydraulic
Deck shower	yes
Anchor	yes
Anchor chain	yes
Chain counter	yes
Windlass	electrical Lofrans with remote control
Deck wash	yes
Sea railing	stainless steel
Grab rail (superstructure)	stainless steel
Wiper	2x (2025)
Clearview window	yes
Horn	electric
Radio	Pioneer
Cockpit speakers	yes
Speakers in salon	yes
Clock - barometer	yes
Extra info	Fridge in cockpit outside, spacious sundeck







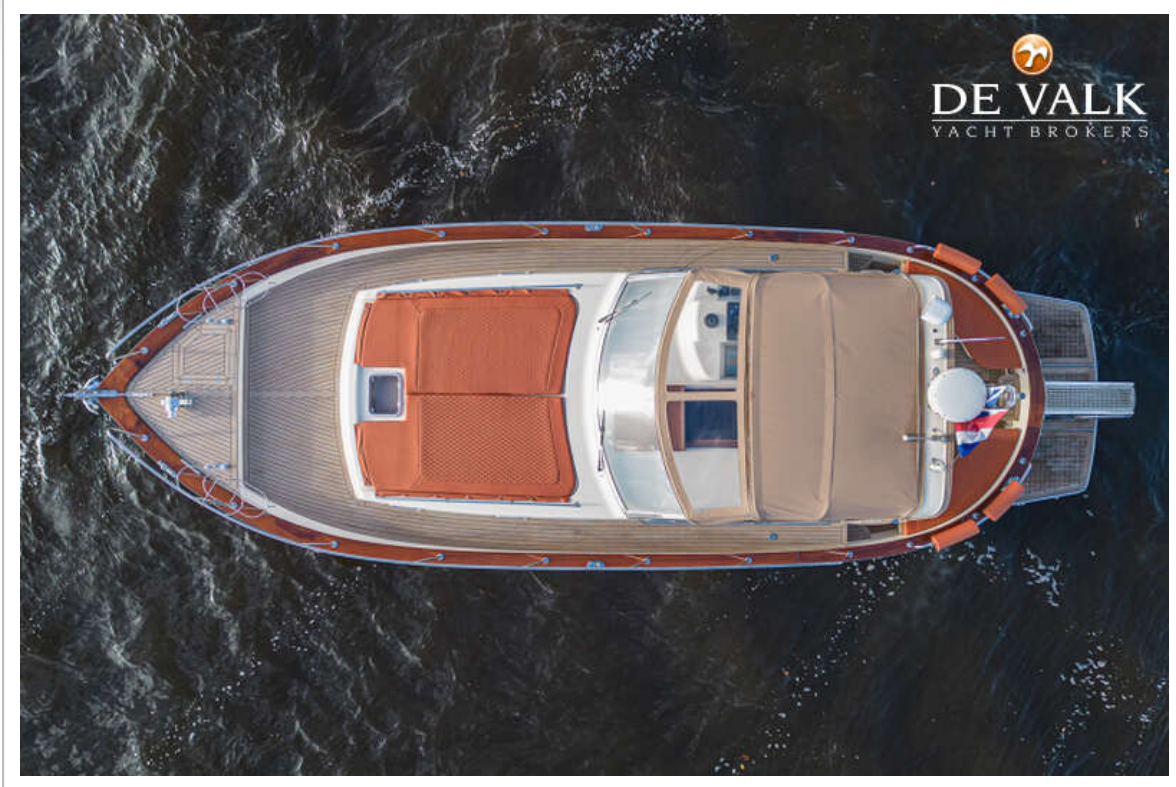




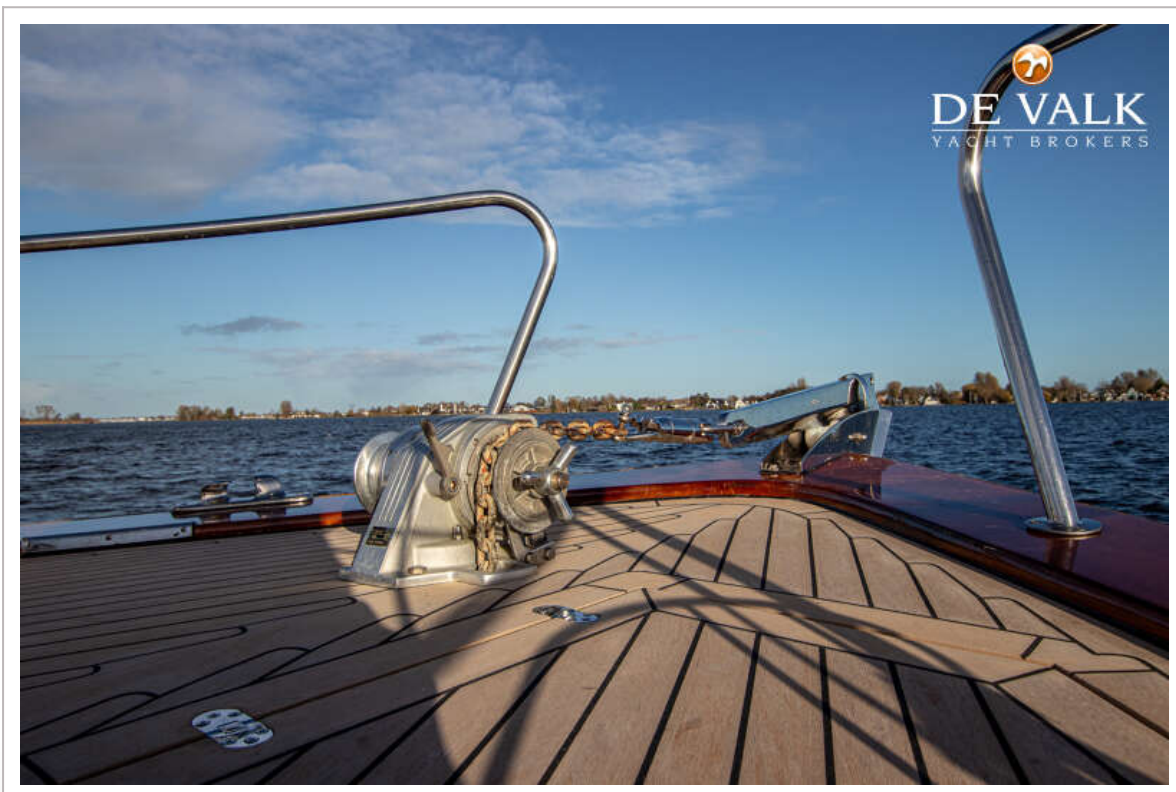


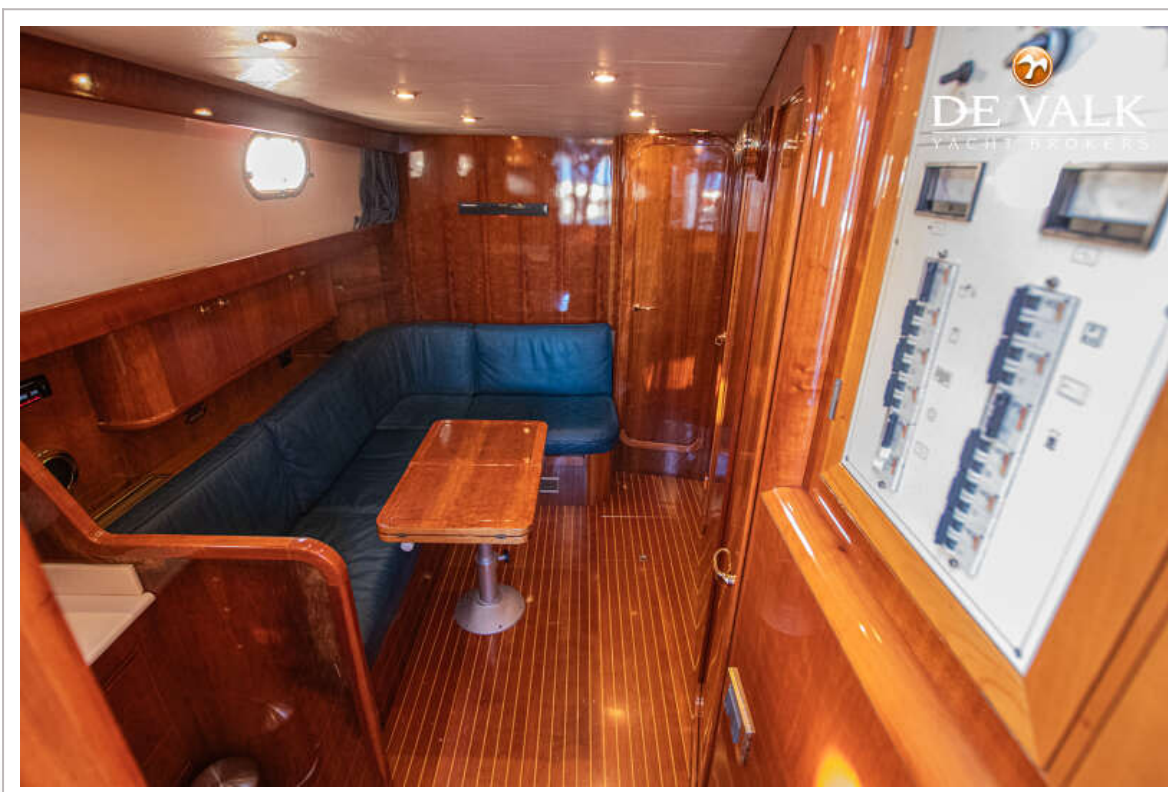
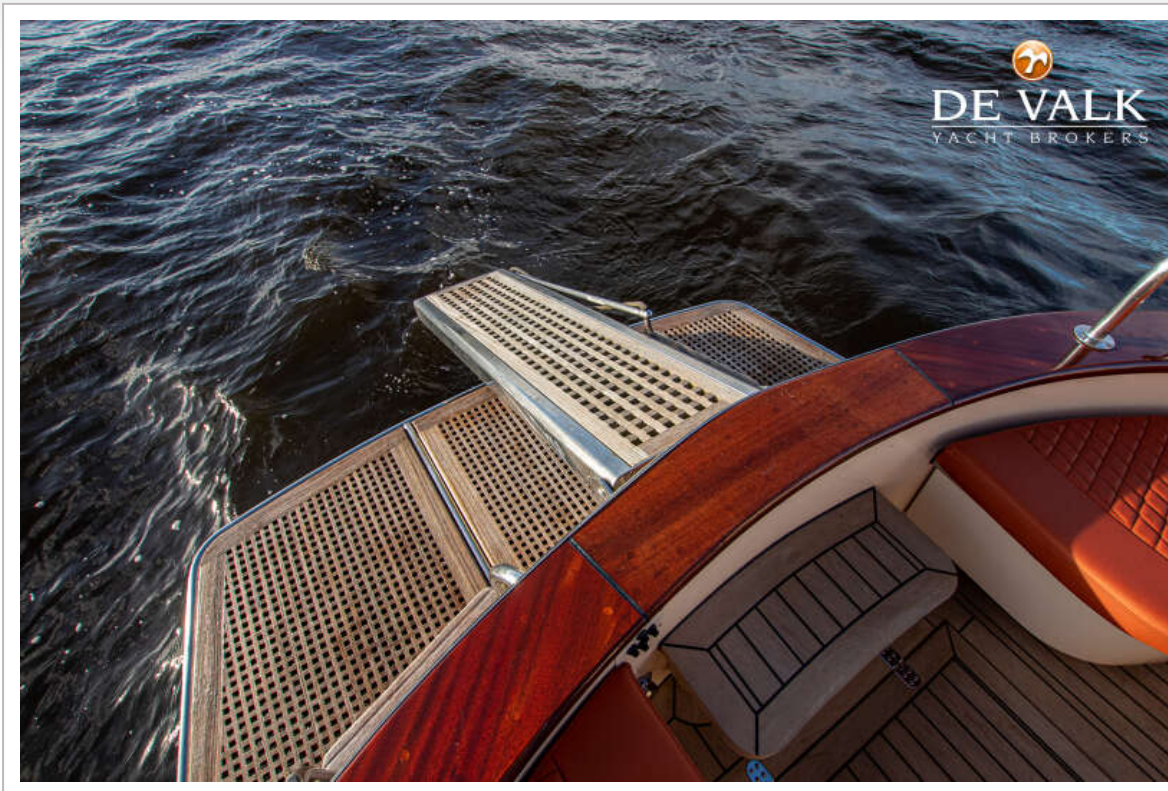


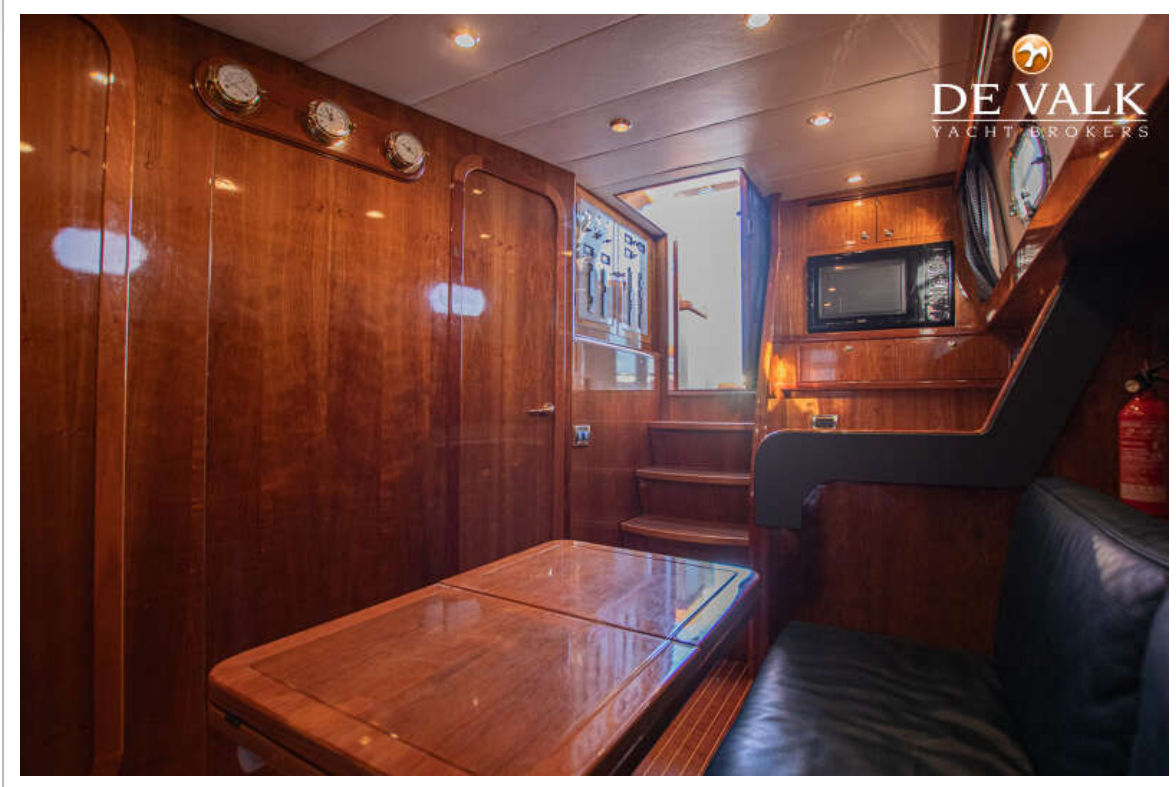
APREAMARE 11







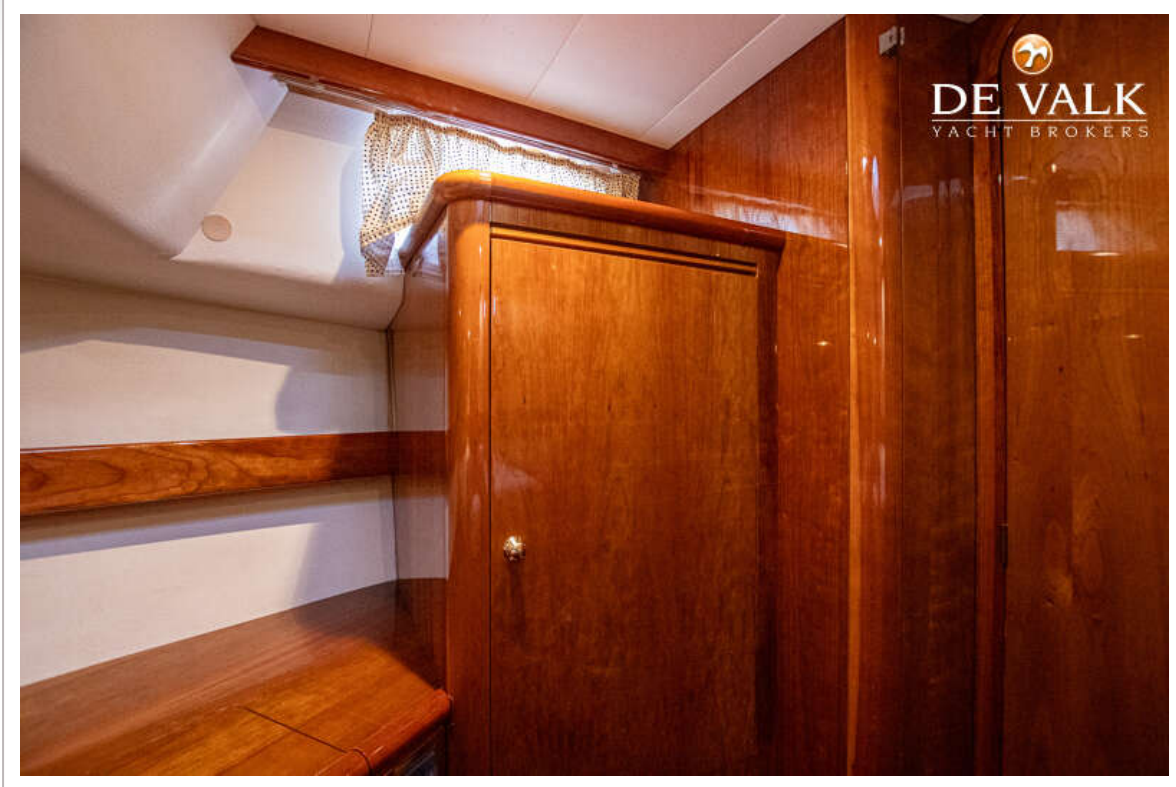


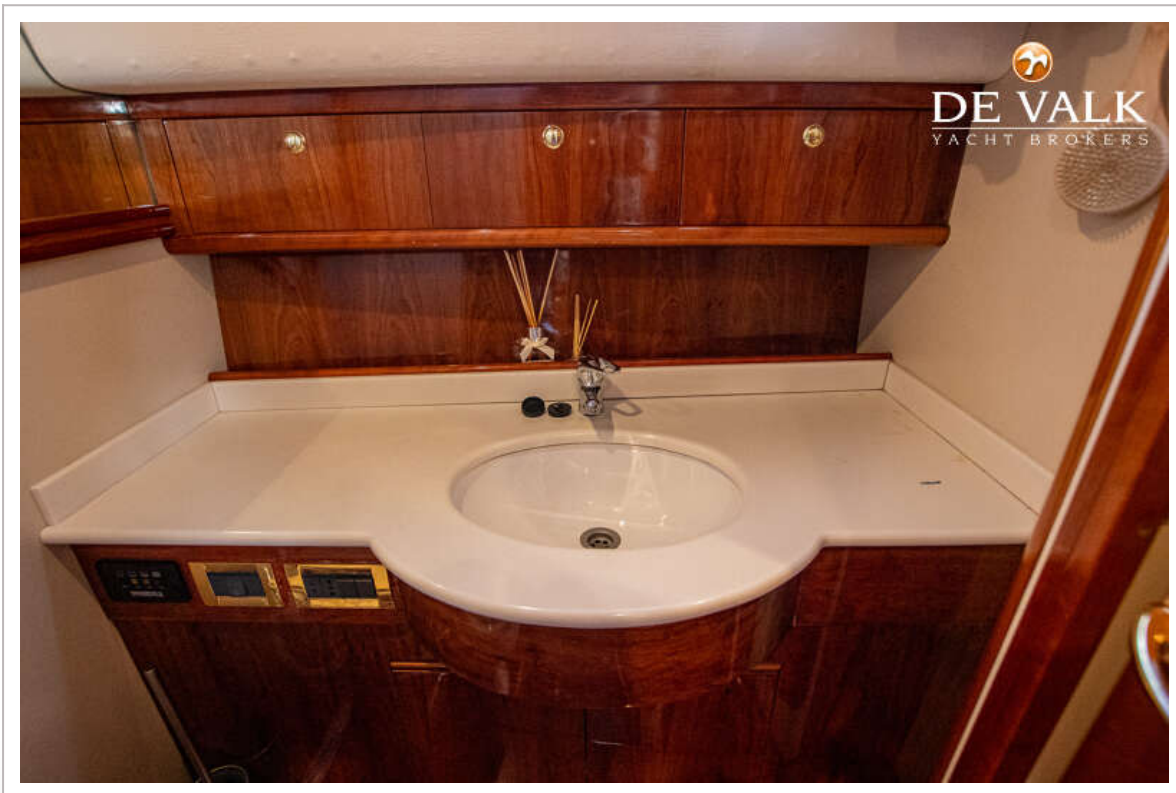


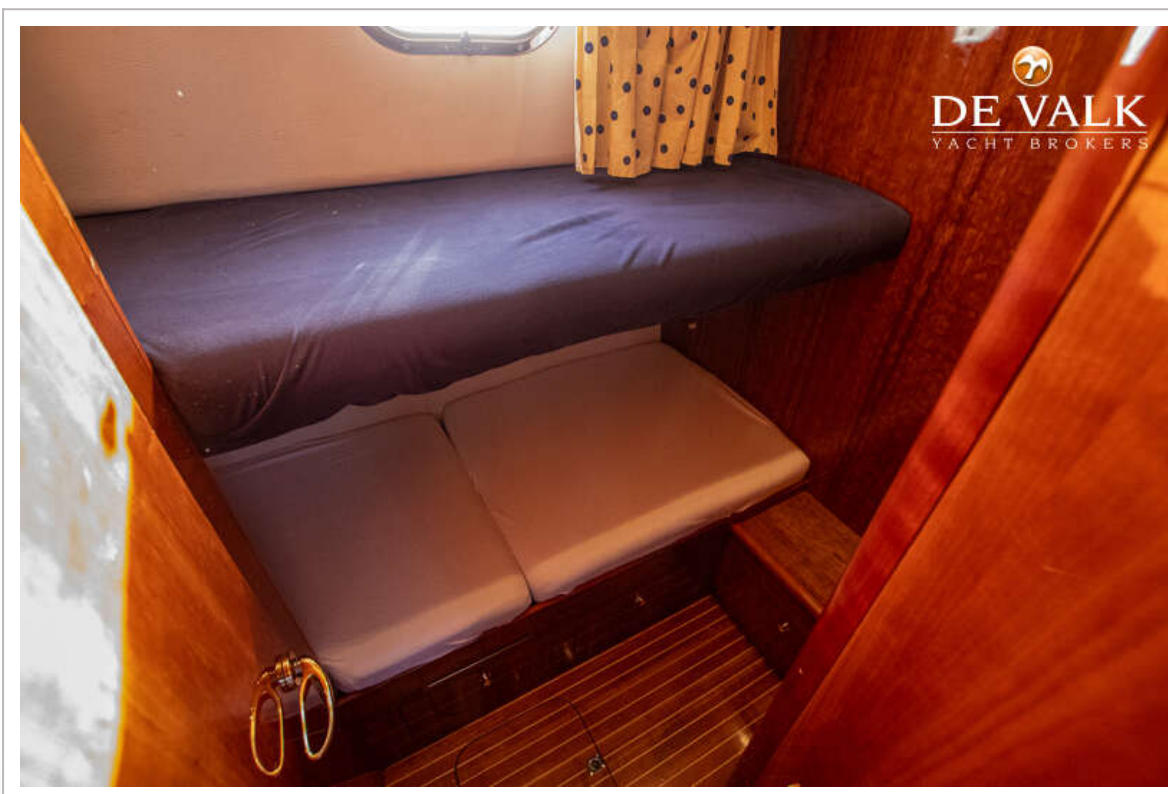
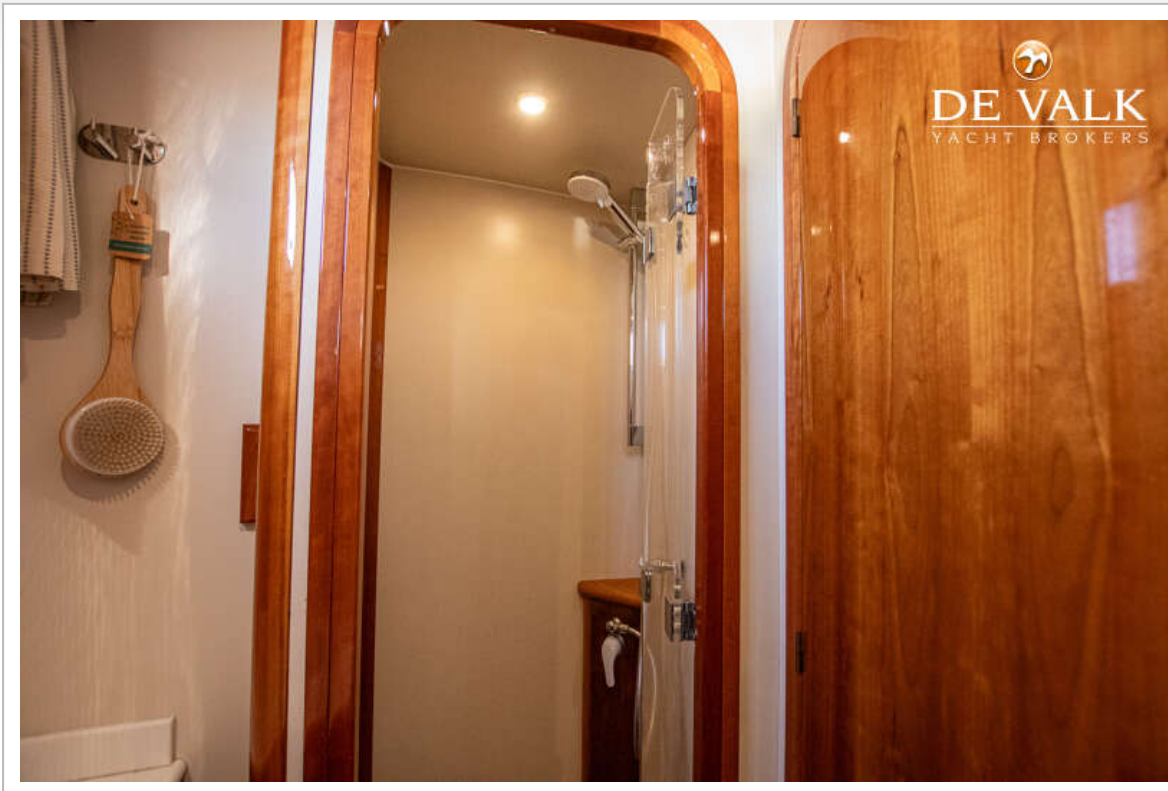


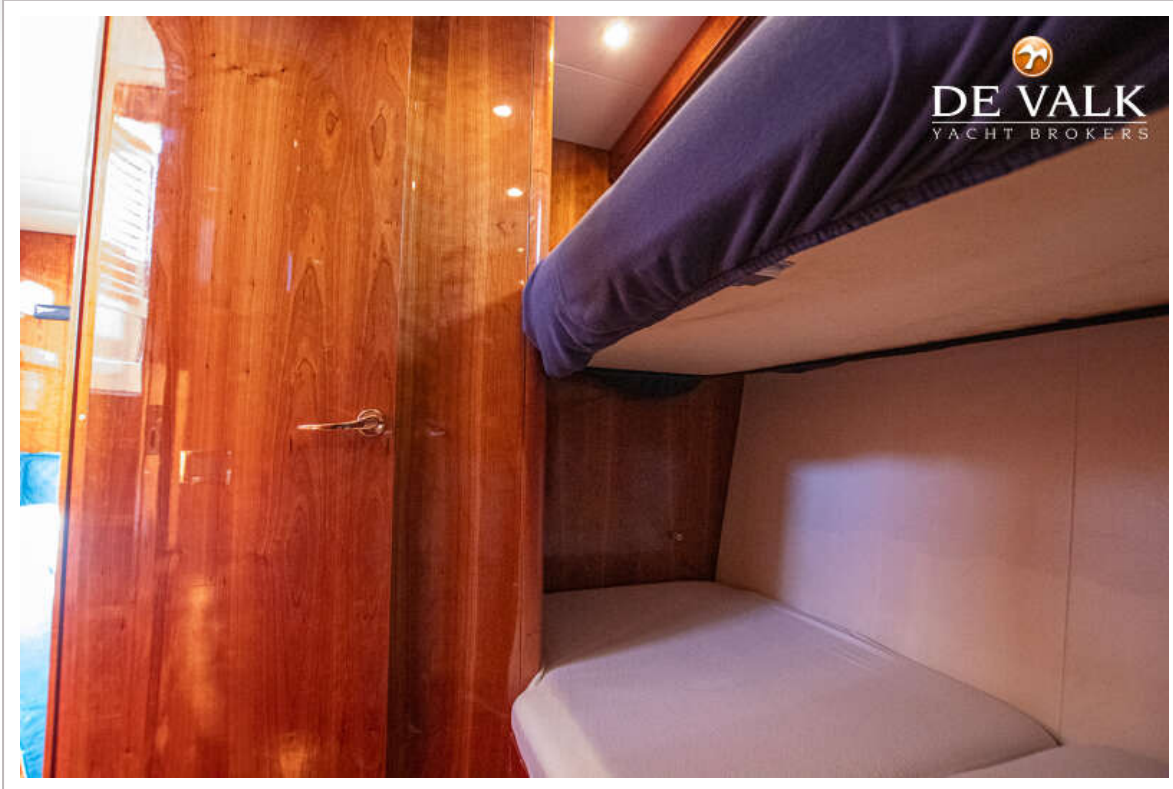












APREAMARE 11

