



DICK ZAAL POLAR BEAR



DE VALK
YACHT BROKERS

DICK ZAAL POLAR BEAR

BROKER'S COMMENTS

This excellent maintained Dick Zaal Polar bear is a true quality yacht, designed by Dick Zaal and built in the Netherlands. This boat is perfect at all sea conditions, she moves pleasantly smooth and is easy to maneuver at sea as well as in narrow marinas. Double ender with solid keel, but in no way a lame. "Pollux" is a really good sailor, single handled. On anchor the Dick Zaal Polar Bear lies calm as a stone, just reef the mizzen. Completely healthy steel Lots of high quality investments and professional upgrades have been done recent

Hans Visser

SPECIFICATIONS

Dimensions	12.62 x 3.50 x 1.80 (m)	Builder	Jachtwerf M.G. Leijnse Oude Niedorp
Built	1992	Cabins	2
Material	Steel	Berths	5
Engine(s)	1 x Yanmar 4JH2E diesel	Hp/Kw	50.00 (hp), 36.75 (kw)
Asking price	sold (VAT)	Lying	at sales office

CONTACT

Sales office	De Valk Hindeloopen B.V.	Telephone	+31 514 52 40 00
Address	Oosterstrand 1 8713 JS Hindeloopen NL	E-mail	hindeloopen@devalk.nl

DISCLAIMER

These particulars are given in good faith as supplied but cannot be guaranteed.



DICK ZAAL POLAR BEAR

GENERAL

Model	DICK ZAAL POLAR BEAR
Type	sailing yacht
LOA (m)	12,62
LWL (m)	9,50
Beam (m)	3,50
Draft (m)	1,80
Air draft (m)	17,80
Headroom (m)	1,95
Year built	1992
Builder	Jachtwerf M.G. Leijnse Oude Niedorp
Country	The Netherlands
Designer	Dick Zaal
Displacement (t)	13,5
Ballast (tonnes)	lead 5
Hull material	steel
Hull colour	black
Hull thickness (mm)	4
Hull shape	yes
Keel type	long keel
Rubbing strake	stainless steel
Deck finish	teak
Superstructure deck finish	teak
Cockpit deck finish	teak
Dorades	1
Window frame	brass
Window material	tempered glass
Deckhatch	escape hatch and skylight
Insulation	rockwool
Fuel tank (litre)	750 ltr.
Level indicator (fuel tank)	yes



DICK ZAAL POLAR BEAR

Fuel daytank (litre)	30 ltr.
Level indicator (daytank)	yes
Freshwater tank (litre)	500 ltr.
Blackwater tank (litre)	Optional
Greywater tank (litre)	GRP 5 ltr. with central extrusion pump
Wheel steering	yes
Emergency tiller	yes
More info on hull	LOD 11,35

ACCOMMODATION

Cabins	2
Berths	5
Interior	teak
Floor	teak and holly
Open cockpit	yes
Saloon	yes
Headroom saloon (m)	1,90 mtr.
Heating	diesel ducted hot air Webasto
Chart table	yes
Aft Cabin	yes
Galley	yes
Countertop	wood
Sink	3 x
Cooker	Force 10 3-burner
Oven	yes
Fridge	yes
Hot water system	220V + engine 30L
Water pressure system	electrical New 2024
Manual and/or foot pump	yes
Owners cabin	double bed + single bed
Bed length (m)	1,92



DICK ZAAL POLAR BEAR

Wardrobe	drawers
Bathroom	shared
Toilet	yes
Toilet system	Separett Tiny "Dry" toilet
Wash basin	3X
Guest cabin 1	v-bed
Wardrobe	drawers

MACHINERY

No of engines	1
Make	Yanmar
Type	4JH2E
HP	50
kW	36.75
Fuel	diesel
Year installed	1992
Maximum speed (kn)	8
Cruising speed (kn)	6
Consumption (l/hr)	1,9
Range (nm)	1600
Engine hours	4260
Engine cooling system	freshwater heat exchanger
Drive	shaft
Engine controls	yes
Gearbox	yes
Bowthruster	yes
Thrust bearing	New 2024
Propeller type	folding Volvo, fixed in spare
Propeller blades	3
Propeller shaft material	stainless steel
Shaft lubrication	water



Manual bilge pump	yes
Electric bilge pump	yes
Electrical installation	yes
Start battery	yes
Service battery	yes
Battery monitor	yes
Battery charger	yes
Shorepower	yes
Extra info	Aft shaftbearing replaced 2024
Extra info	Engine reallignment 2024 incl new fillingplates
Extra info	New aodes 2024

NAVIGATION

Compass	Sestrel & Moore
Electric compass	Raymarine ES75
Depth sounder	Raymarine ES75
Windset	yes
VHF	Raymarine With DSC 2017
Autopilot	Raymarine ES75
Radar	Furuno (2010)
GPS	Raymarine
Plotter	Raymarine
Navtex	yes
Personal computer	yes
PC connection	yes
Electronic chart(s)	yes
AIS transceiver	Raymarine 2017
Radio receiver	yes
EPIRB	Valid untill 2028
Personal MOB transmitter	yes



EQUIPMENT

Fixed windscreen	yes
Sprayhood	2017 incl covers dackhatches
Cockpit cover	yes
Winter cover	yes
Boarding ladder	yes
Anchor	yes
Anchor chain	yes
Anchor 2	yes
Windlass	electrical Vetus Alexander II 1000W 12V
Sea railing	yes
Pushpit	yes
Pulpit	yes
Mooring lines	yes
Spare parts	yes
Speakers in cabin	yes
Clock - barometer	yes
Fire extinguisher	yes
Extra info	Searailing replaced 2018

RIGGING

Rigging	ketch-cutter
Standing rigging	2018 by CS rigging Zaandam
Brand mast	Brasker
Material mast	aluminium White painted
Spreaders	yes
Mainsail cover	2017
Fully battened mainsail	"Diekow" 2008 with Lazy jacks
Mizzen	Full batten "Diekow"
Mizzen sailcover	2017
Jib	yes



DICK ZAAL POLAR BEAR

Genoa	yes
Genoa furler	Reckmann RS200 (2010)
Booster	110 m2
Yankee	2007
Removable innerforestay	yes
Stormjib	not used
Backstay adjuster	2008
Multifunctional winches	Selftailing Meissner
Spi-pole	aluminium
Extra info	old mainsail available



DICK ZAAL POLAR BEAR



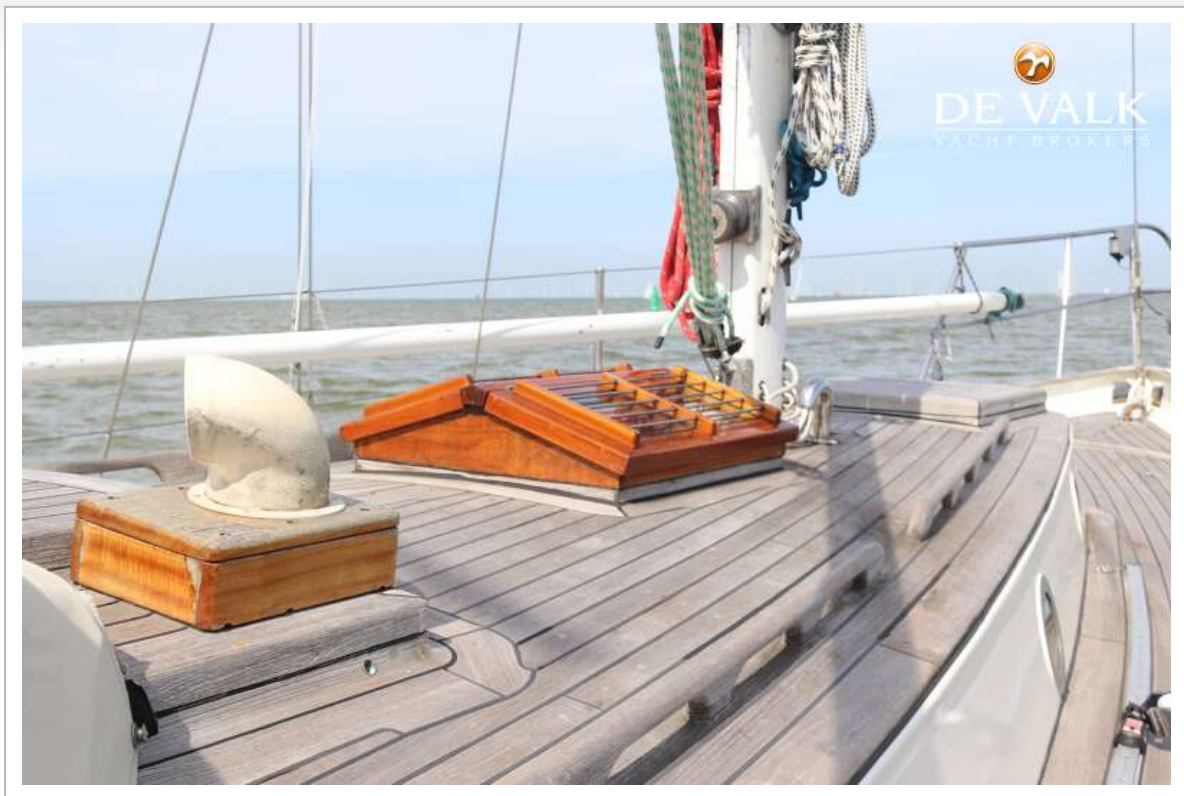
DICK ZAAL POLAR BEAR



DICK ZAAL POLAR BEAR



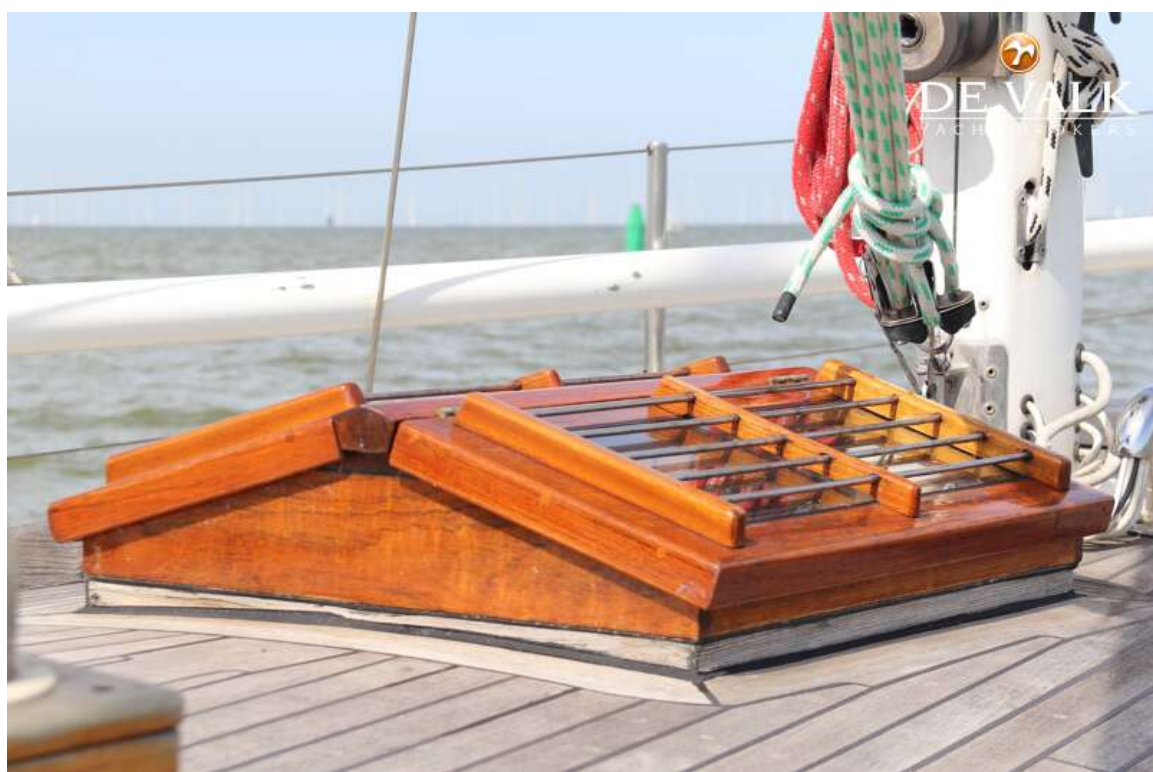
DICK ZAAL POLAR BEAR



DICK ZAAL POLAR BEAR



DICK ZAAL POLAR BEAR



DICK ZAAL POLAR BEAR



DICK ZAAL POLAR BEAR



DICK ZAAL POLAR BEAR



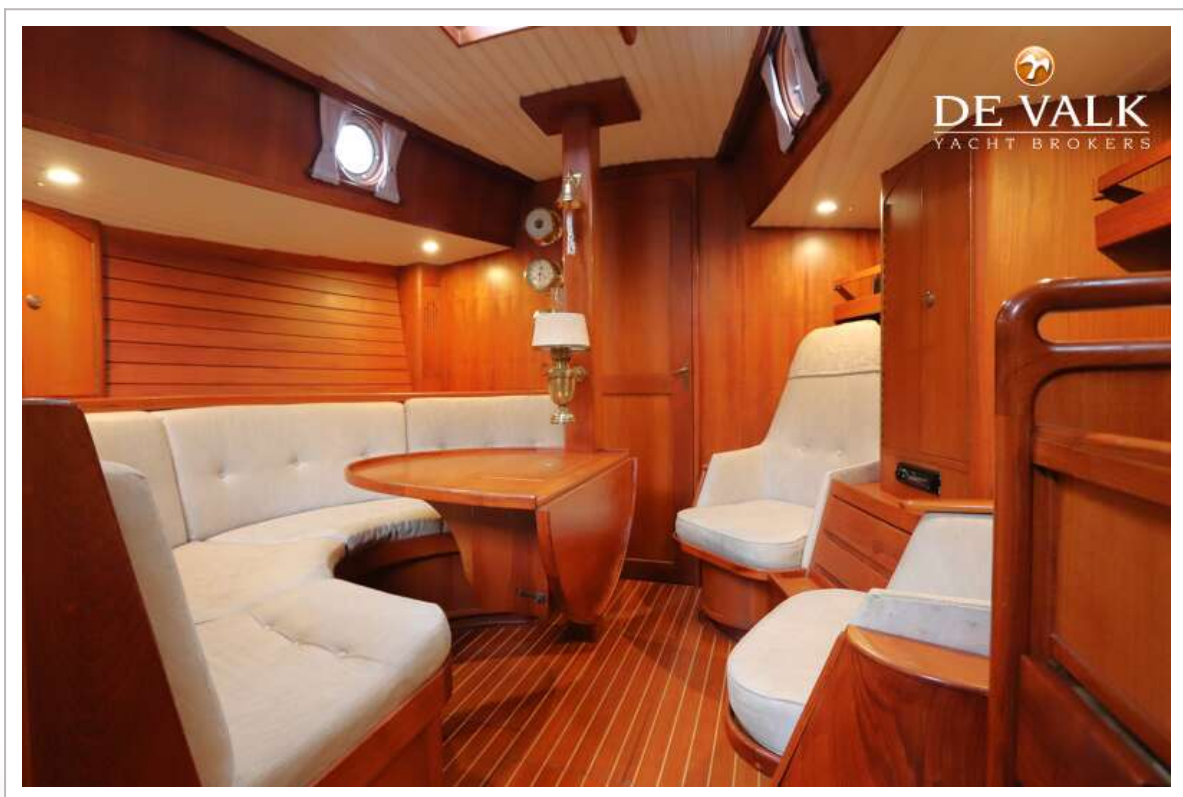
DICK ZAAL POLAR BEAR



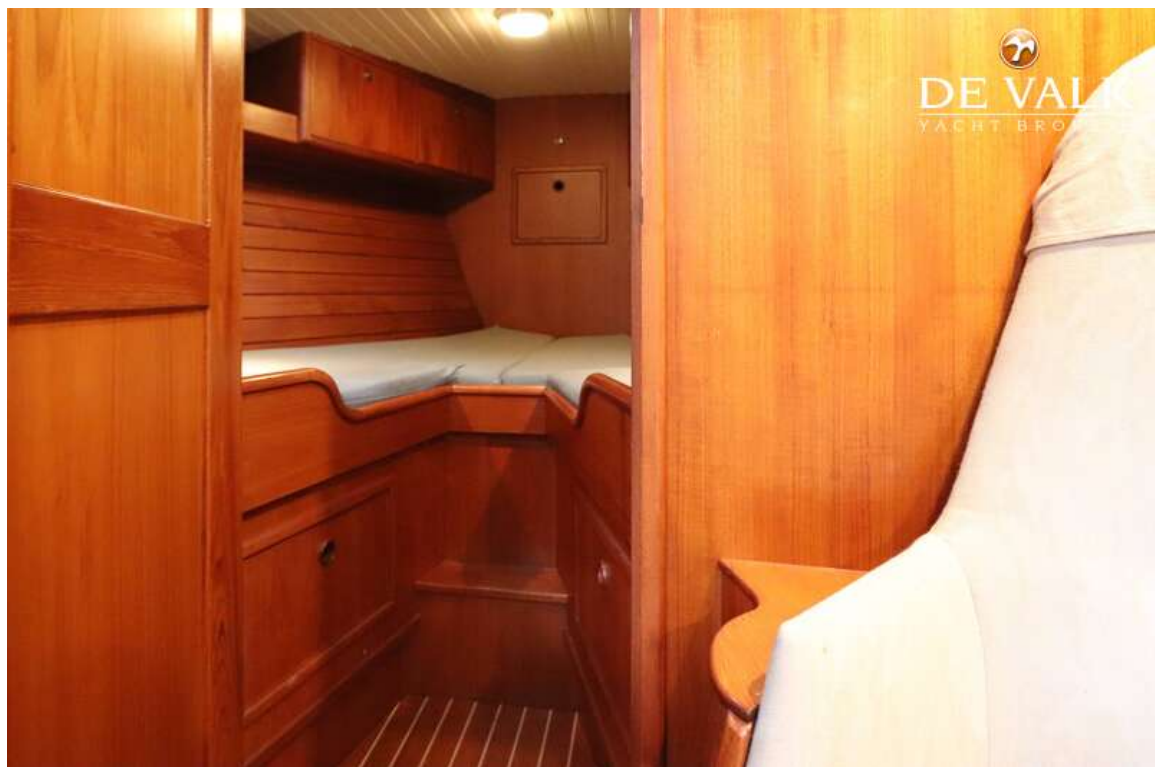
DICK ZAAL POLAR BEAR



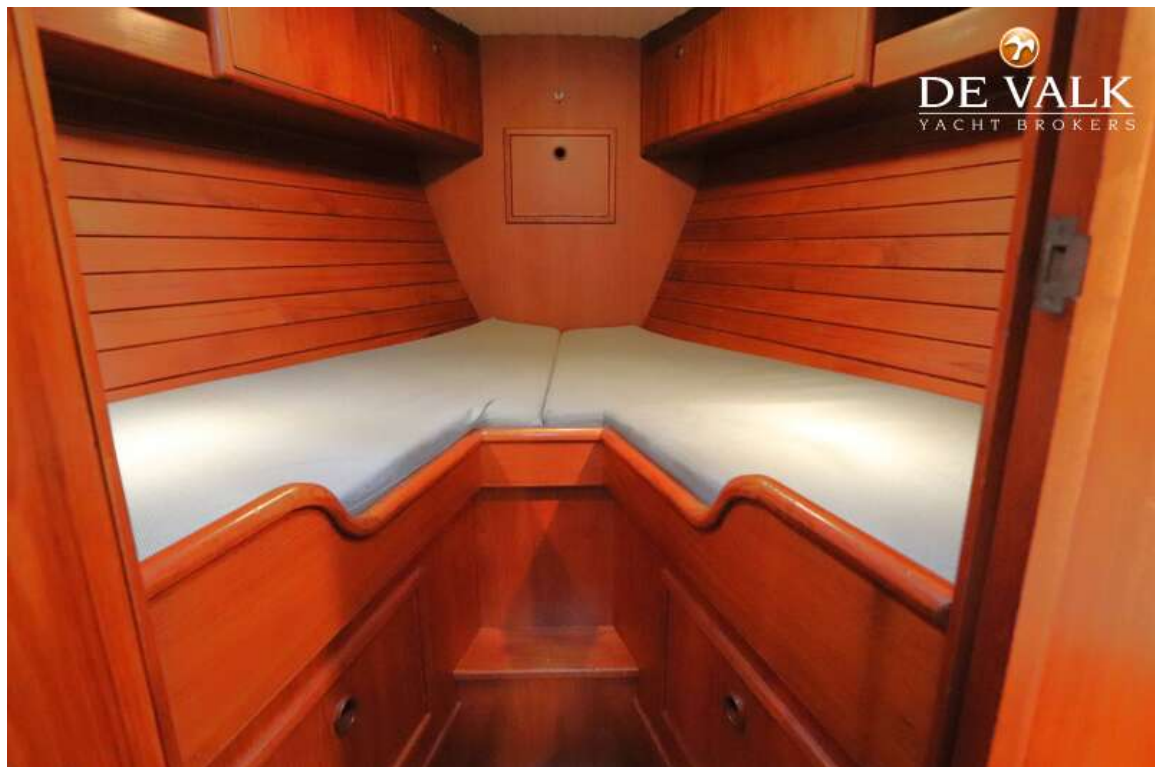
DICK ZAAL POLAR BEAR



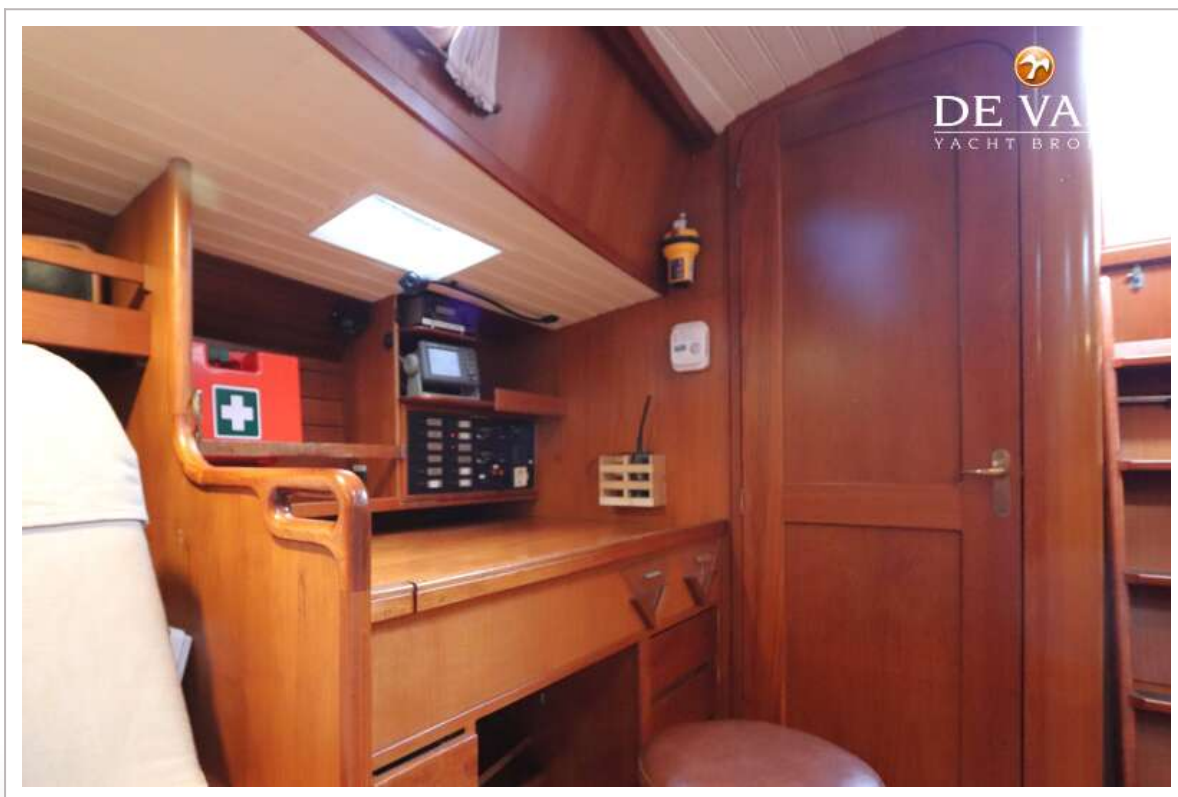
DICK ZAAL POLAR BEAR



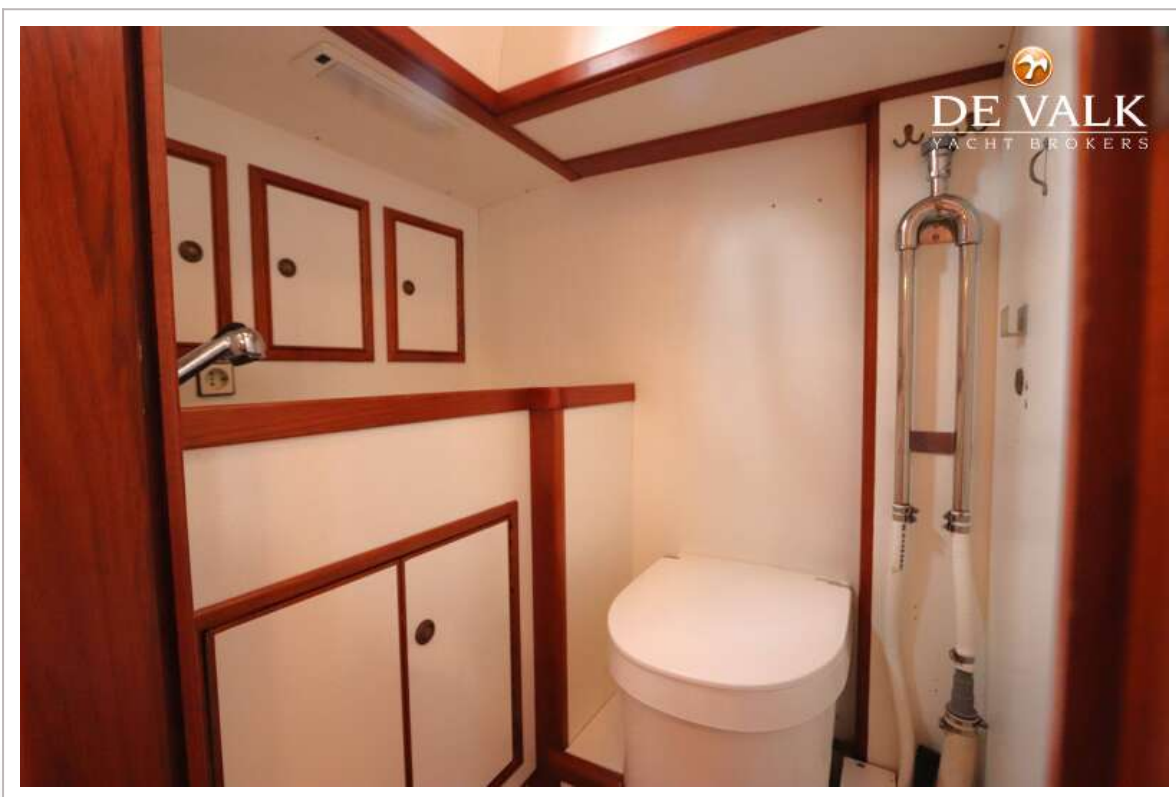
DICK ZAAL POLAR BEAR



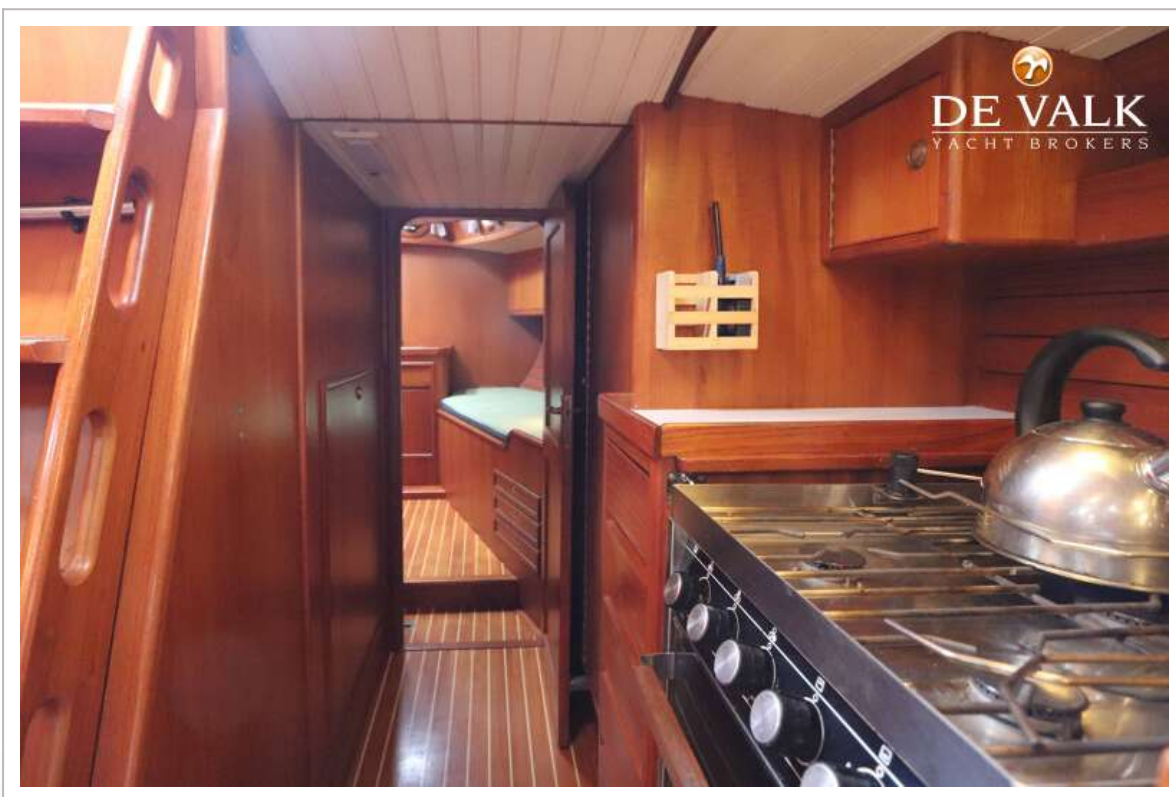
DICK ZAAL POLAR BEAR



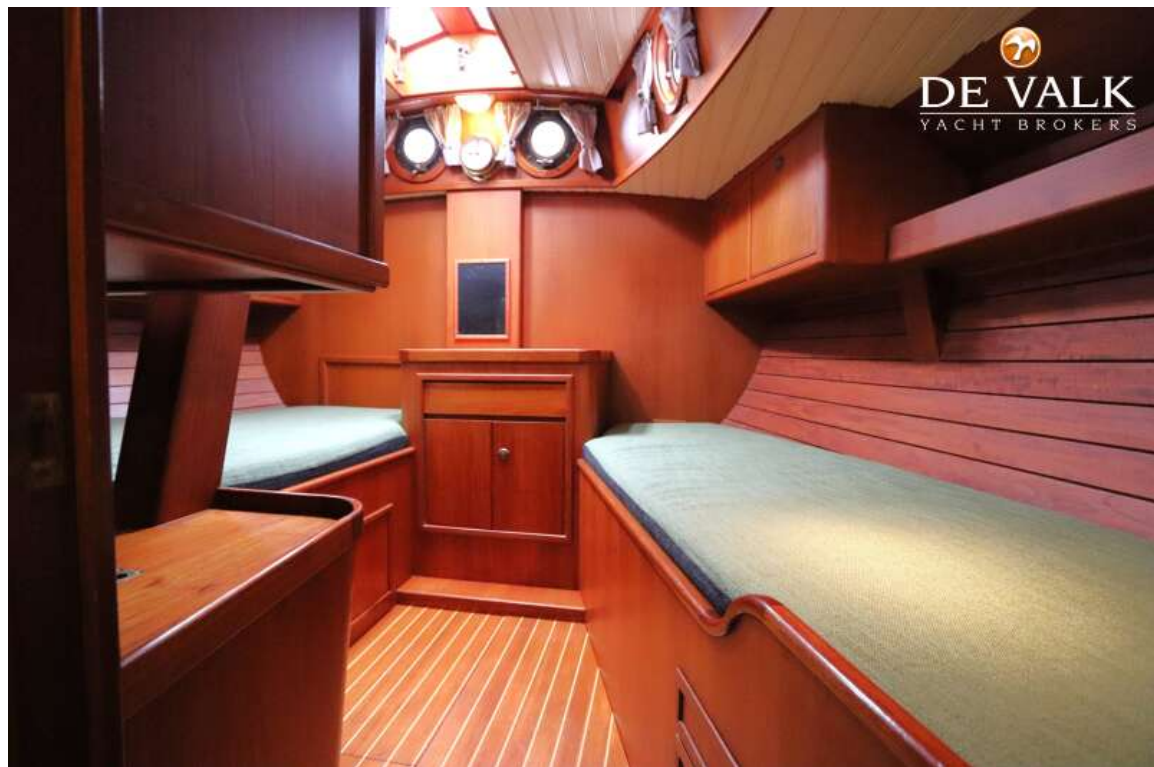
DICK ZAAL POLAR BEAR



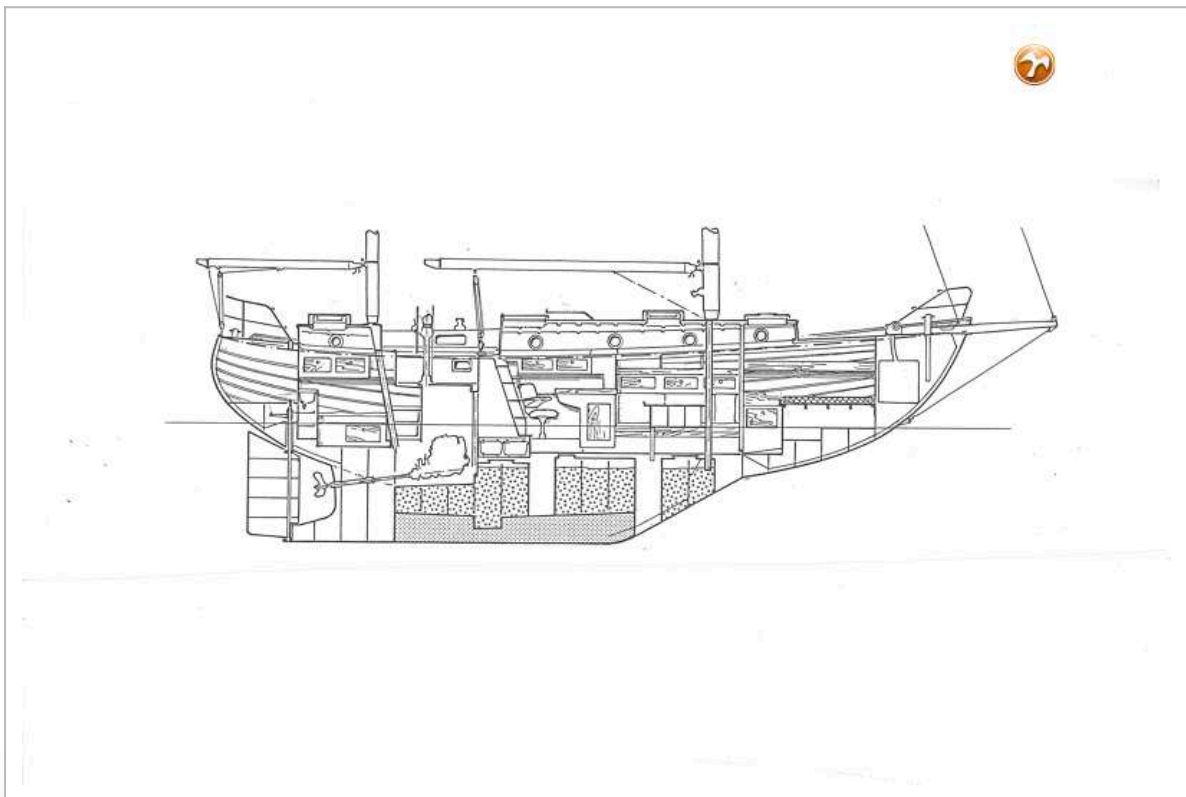
DICK ZAAL POLAR BEAR



DICK ZAAL POLAR BEAR



DICK ZAAL POLAR BEAR



DICK ZAAL POLAR BEAR

