



DE VALK
YACHT BROKERS



SUPER KAAGKRUISER VISCH 45



DE VALK
YACHT BROKERS

SUPER KAAGKRUISER VISCH 45

BROKER'S COMMENTS

The SUPER KAAGKRUISER VISCH 45 is being sold by auction. Full details can be found at: <https://brightauctions.com/de/lot-details/22172/> The Visch 45 Classic steel motor yacht was built by the renowned Visch shipyard in Warmond, Holland. Her classic hull lines and period-authentic wooden superstructure lend this motor yacht a special charm. Everything remains in its original condition. The Volvo Penta engines-along with the propellers-were newly installed in 1998. In 1999, the engine room was fitted with new sound insulation.

Hartmut Ross

SPECIFICATIONS

Dimensions	13.87 x 4.06 x 1.30 (m)	Builder	Gebrüder Visch Burg
Built	1966	Cabins	2
Material	Steel	Berths	4
Engine(s)	2 x Volvo Penta TAMD41M diesel	Hp/Kw	2 x 170.00 (hp), 125.12 (kw)
Asking price	€ 20.000 (VAT Exempt)	Lying	contact Kiel

CONTACT

Sales office	De Valk Kiel	Telephone	+49 1712312133
Address	Hermann Rennerstrasse 12 22609 Hamburg DE	E-mail	kiel@devalk.nl

DISCLAIMER

These particulars are given in good faith as supplied but cannot be guaranteed.



SUPER KAAGKRUISER VISCH 45

GENERAL

Model	SUPER KAAGKRUISER VISCH 45
Type	motor yacht
LOA (m)	13,87
Beam (m)	4,06
Draft (m)	1,30
Headroom (m)	1,90
Year built	1966
Builder	Gebrüder Visch Burg
Country	The Netherlands
Displacement (t)	16,5
Hull material	steel
Hull colour	white
Superstructure material	mahogany
Superstructure (mm)	Ca.8
Rubbing strake	steel
Deck material	steel
Deck finish	teak
Cockpit deck finish	teak
Antifouling (year)	Regularly
Dorades	yes
Deckhatch	yes
Insulation	foam
Radar arch	collapsible
Mast can be lowered	manual
Fuel tank (litre)	1.700
Level indicator (fuel tank)	yes
Freshwater tank (litre)	2 x 800
Level indicator (freshwater)	yes
Wheel steering	yes
Inside helm position	yes



More info on paintwork

Annual painting work

ACCOMMODATION

Cabins	2
Berths	4
Floor	carpet
Aft deck	yes
Saloon	yes
Headroom saloon (m)	2,00
Sliding roof	yes
Heating	diesel ducted hot air
Navigation center	yes
Chart table	yes
Aft Cabin	yes
Dining room	yes
Opening door to cockpit	yes
Galley	yes
Countertop	wood
Sink	stainless steel
Cooker	calor gas
Oven	yes
Gas alarm	yes
Fridge	yes
Hot water system	yes
Water pressure system	yes
Crockery	yes
Owners cabin	twin single
Bed length (m)	1,90 x 0,80
Wardrobe	hanging/drawers/shelves
Bathroom	separate
Toilet	en suite



SUPER KAAGKRUISER VISCH 45

Toilet system	manual
Wash basin	in the bathroom
Shower	en suite
Guest cabin 1	bunk bed
Bed length (m)	1,98 x 0,60
Wardrobe	hanging/drawers/shelves
Bathroom	separate
Toilet	en suite
Toilet system	manual
Wash basin	in the bathroom

MACHINERY

No of engines	2
Make	Volvo Penta
Type	TAMD41M
HP	170
kW	125.12
Fuel	diesel
Year installed	1998
Year of overhaul	Regularly
Engine hours	1900
Drive	shaft
Exhaust	yes
Manual bilge pump	yes
Electric bilge pump	yes
Batteries	yes
Start battery	2
Service battery	2 x DYNO Europe 12V/ 246 Ah
Battery charger	MASTERVOLT MASS 24/ 50
Inverter	MASTERVOLT MASS Sine 24/ 1800
Shorepower	with cable



SUPER KAAGKRUISER VISCH 45

Stabilizers fin

NAVIGATION

Compass yes
Electric compass yes
Depth sounder yes
Depth sounder/log yes
Autopilot SIMRAD AP/ ROBERTSON
Plotter RAYTHEON KP RC 30 GPS-
Radio receiver yes
Navigation lights yes
Searchlight yes
Loudhailer yes

EQUIPMENT

Fixed hardtop yes
Cockpit table yes
Cockpit chairs yes
Boarding ladder wood
Transom door yes
Anchor yes
Anchor chain yes
Windlass electrical
Sea railing stainless steel
Grab rail (superstructure) wood
Pushpit yes
Wiper yes
Horn yes
Fenders yes
Mooring lines yes
Spare parts yes





SUPER KAAGKUIJZER VISCH 45



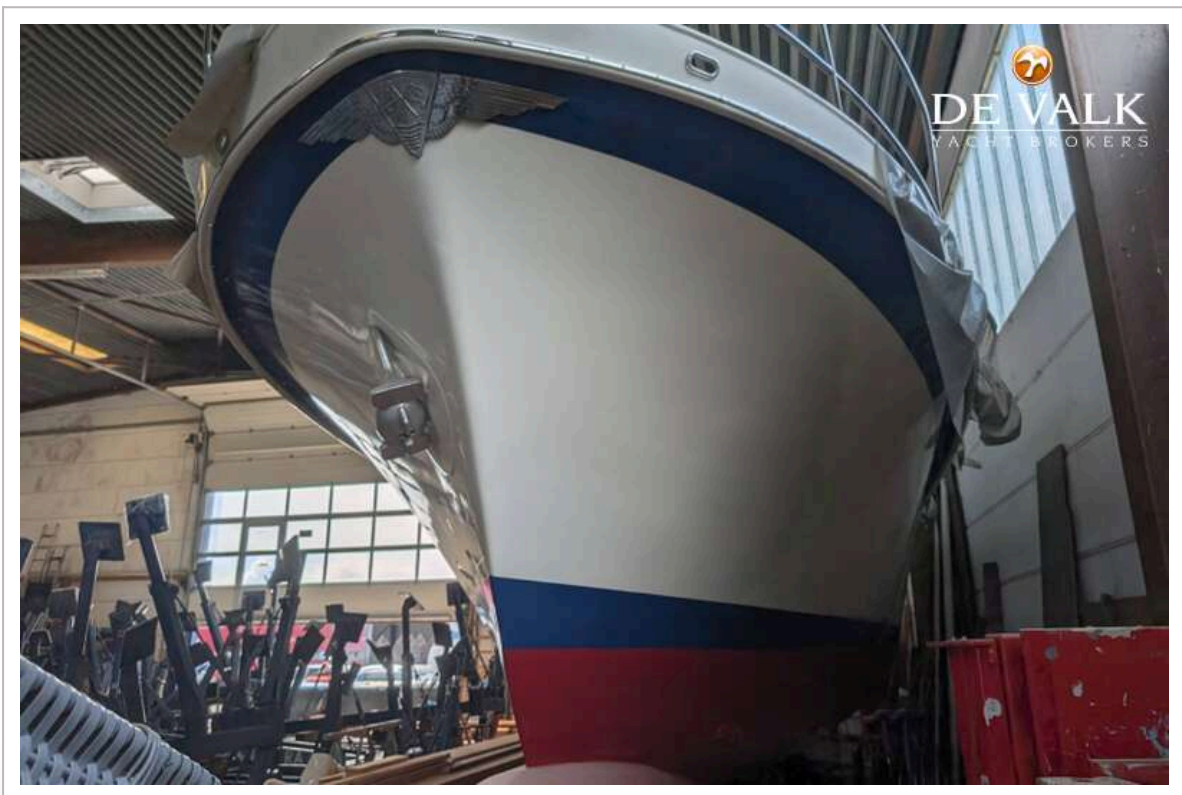
SUPER KAAGKUIZER VISCH 45



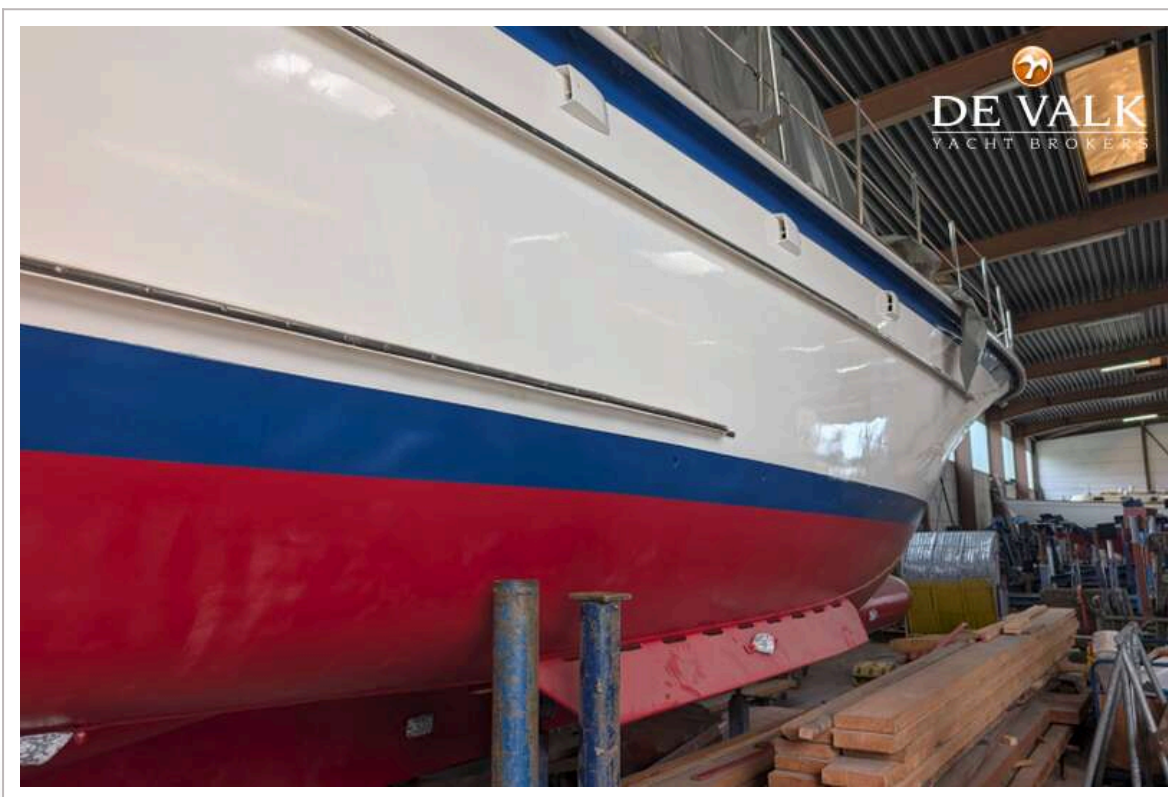
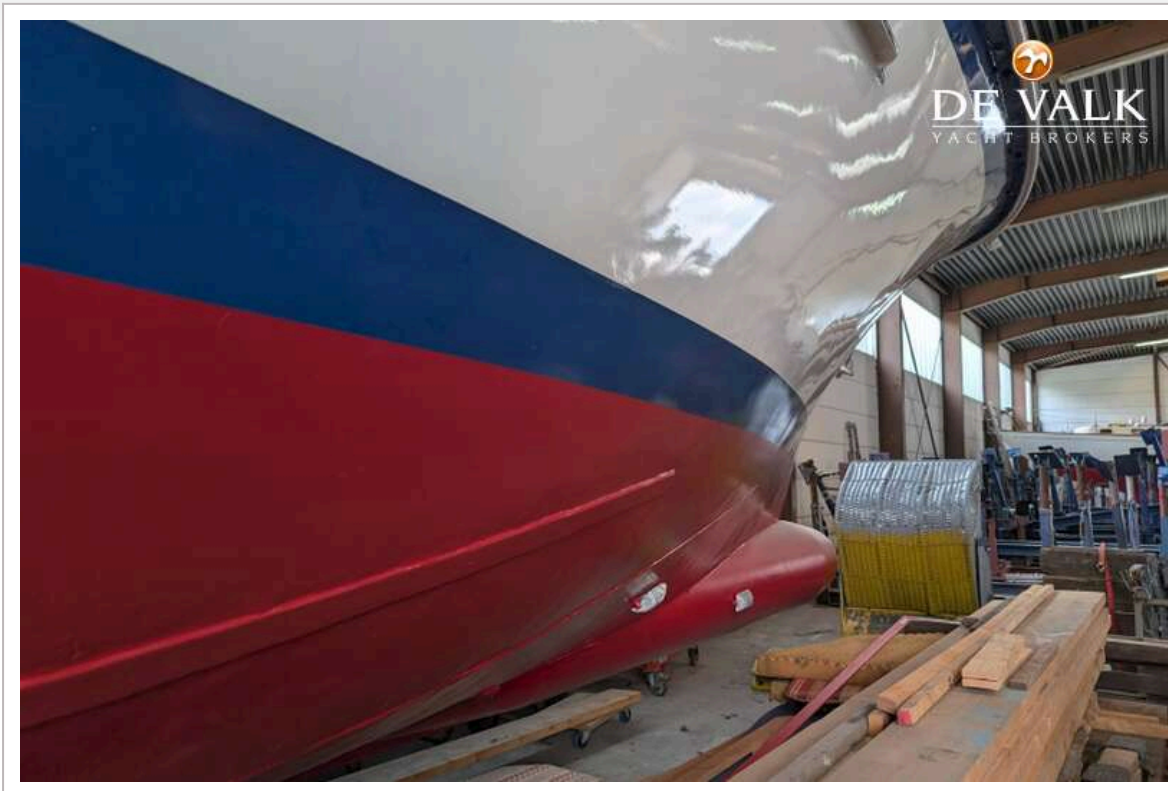
SUPER KAAGKUIJZER VISCH 45



SUPER KAAGKRUISER VISCH 45



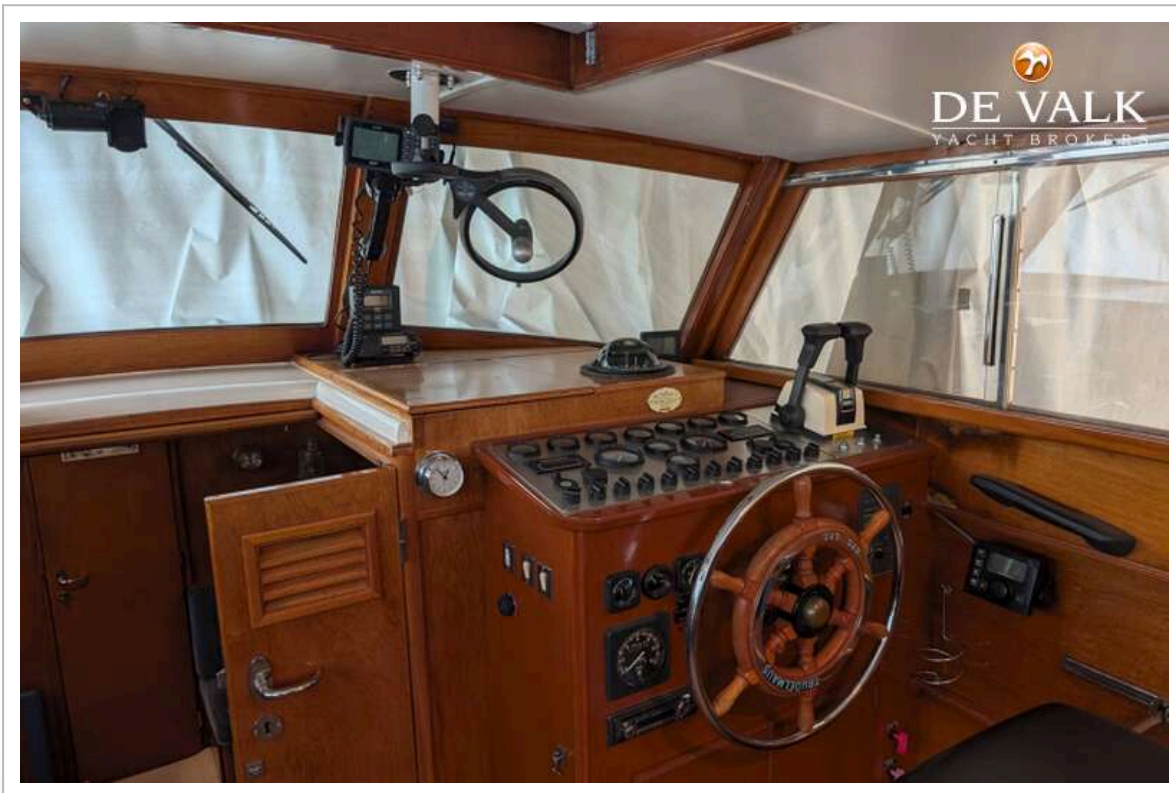
SUPER KAAGKRUISER VISCH 45



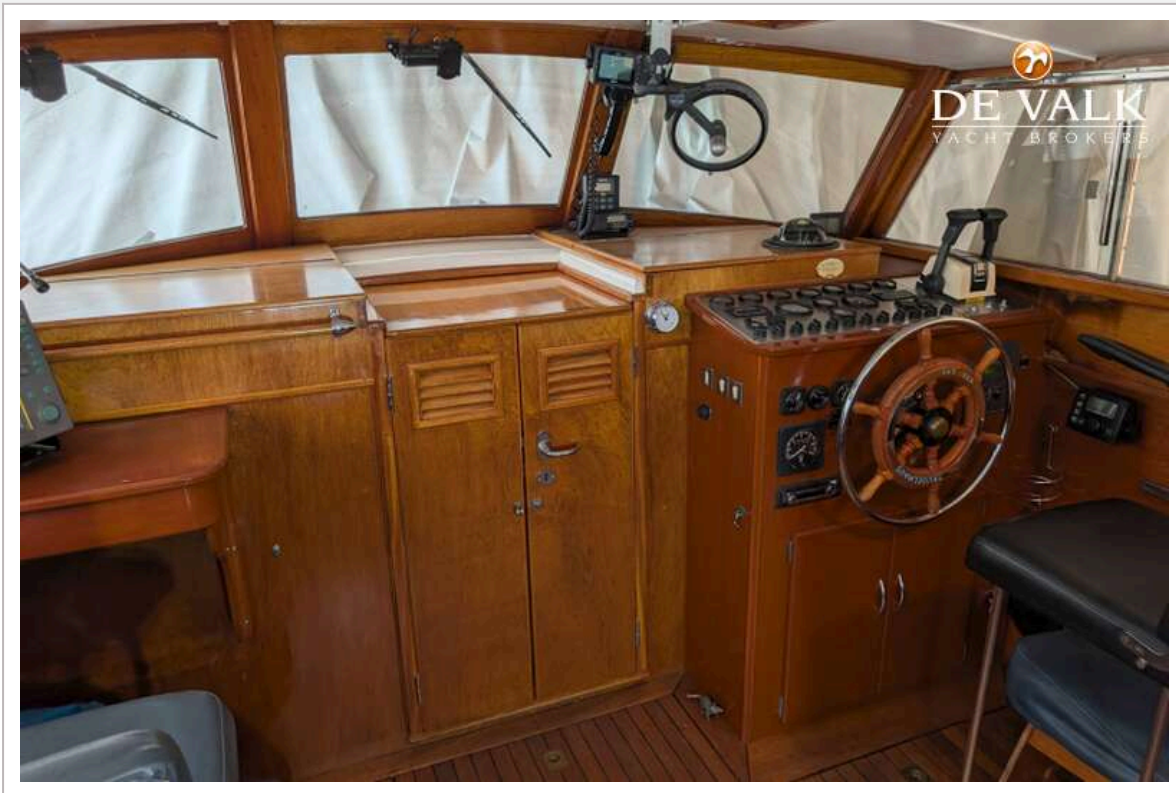
SUPER KAAGKUIZER VISCH 45



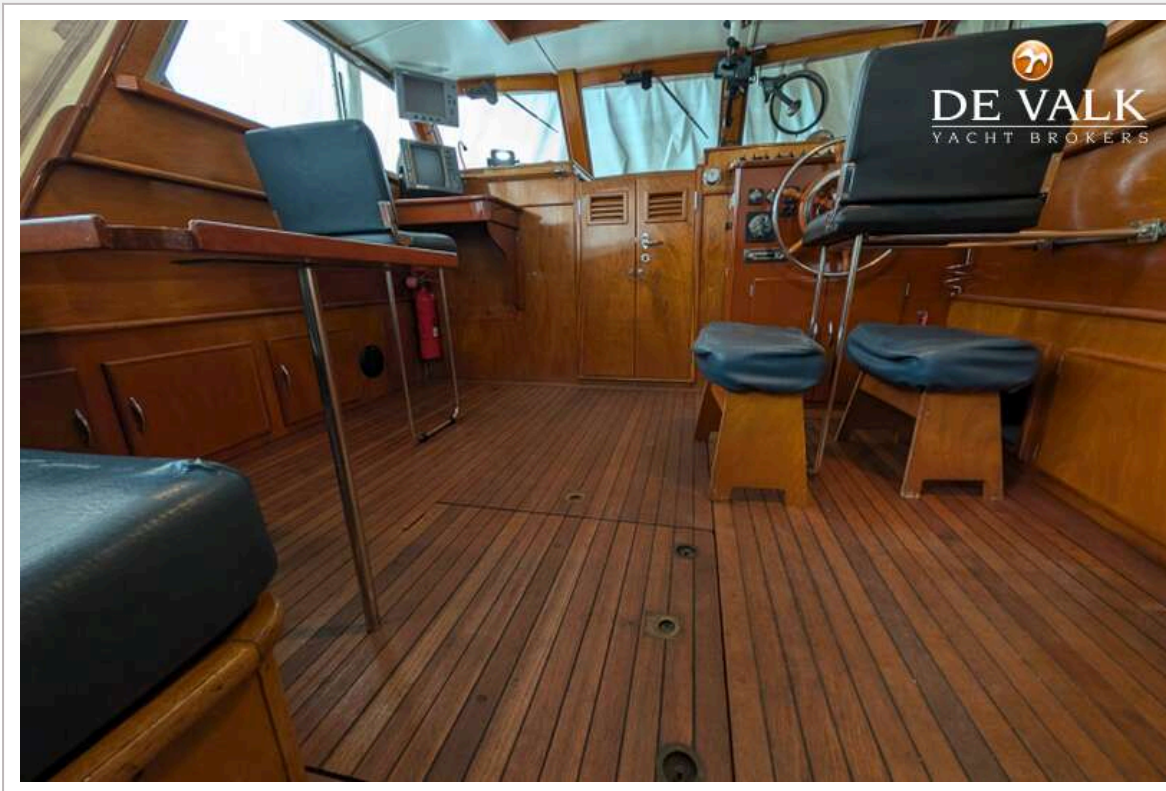
SUPER KAAGKUIJZER VISCH 45



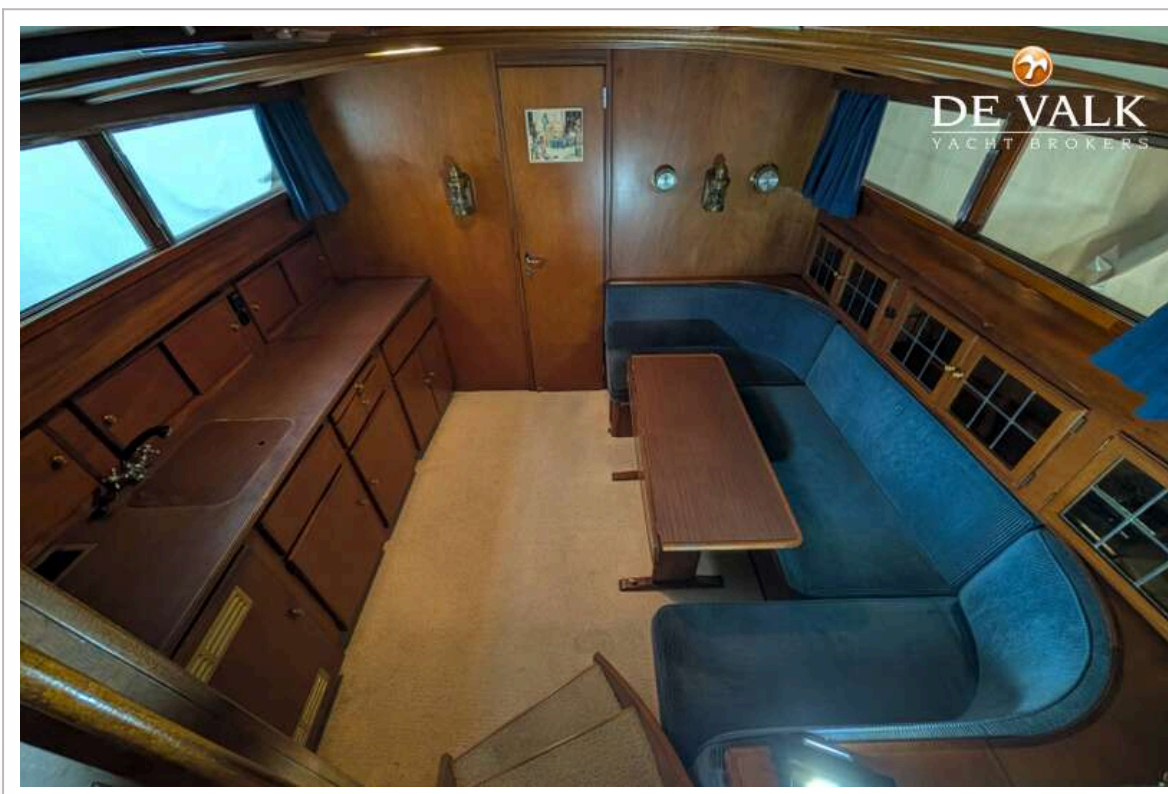
SUPER KAAGKUISEK VISCH 45



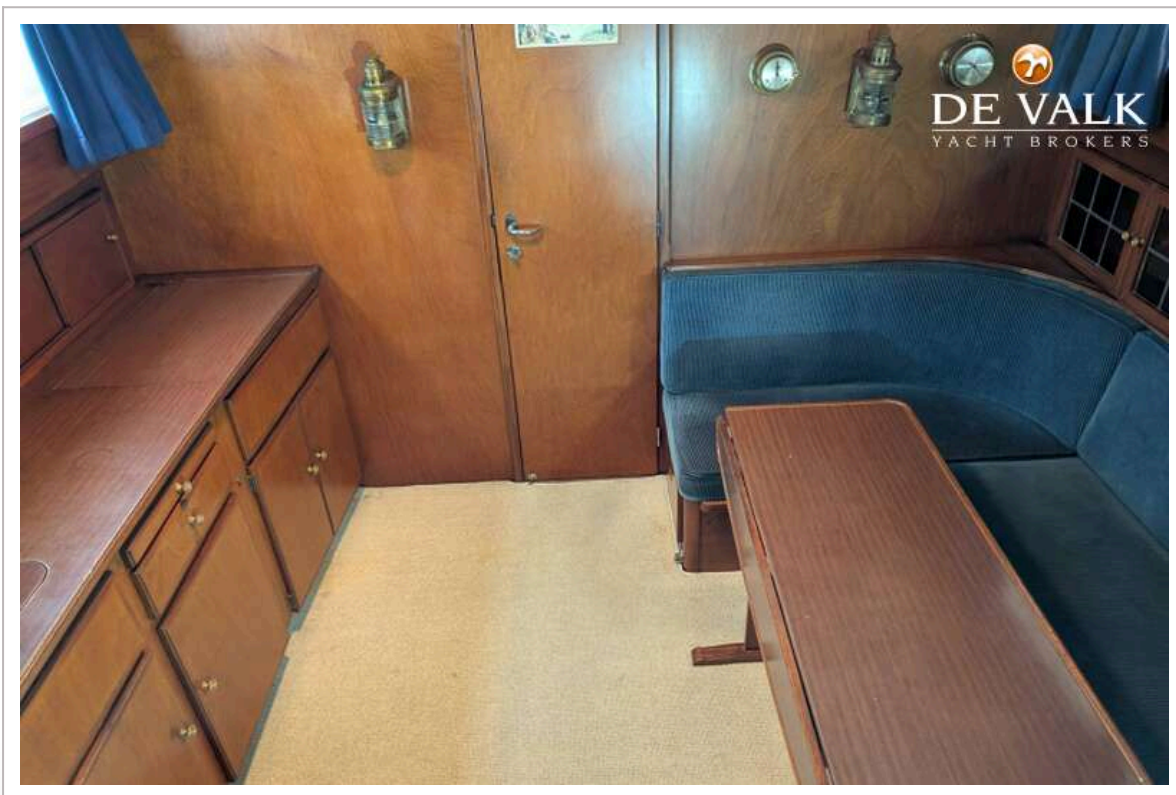
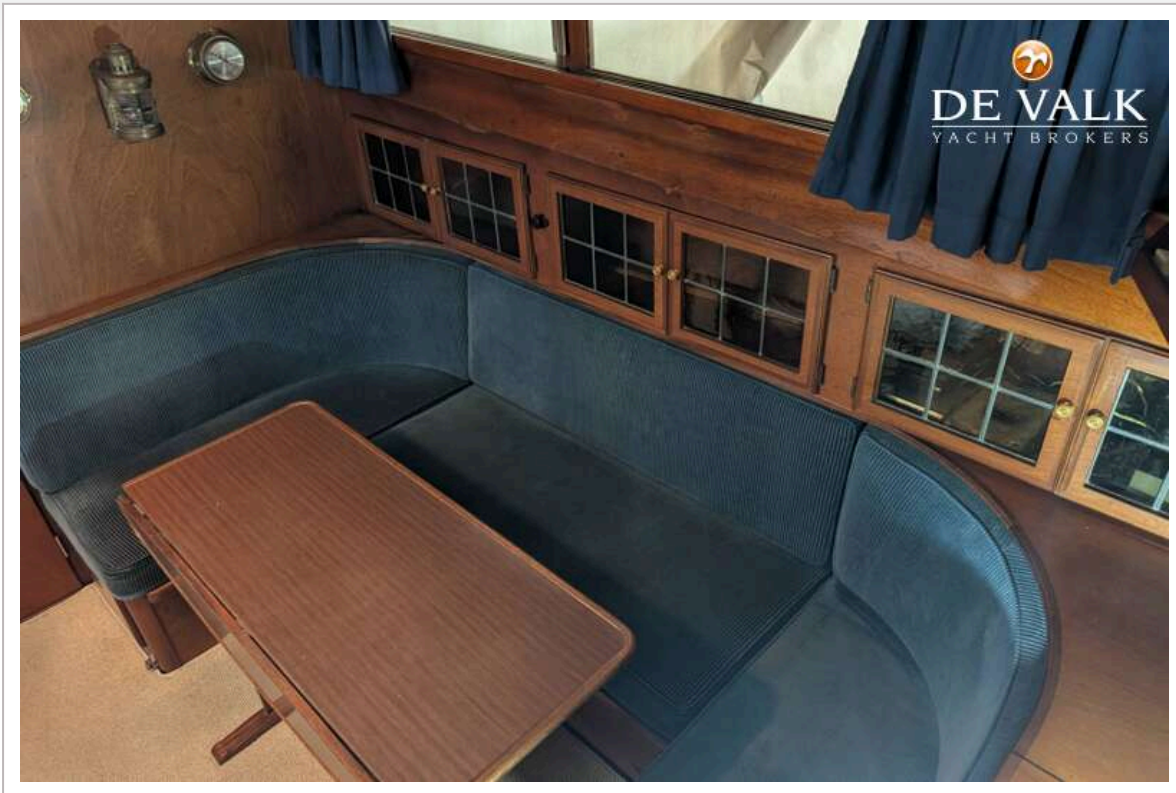
SUPER KAAGKUIJZER VISCH 45



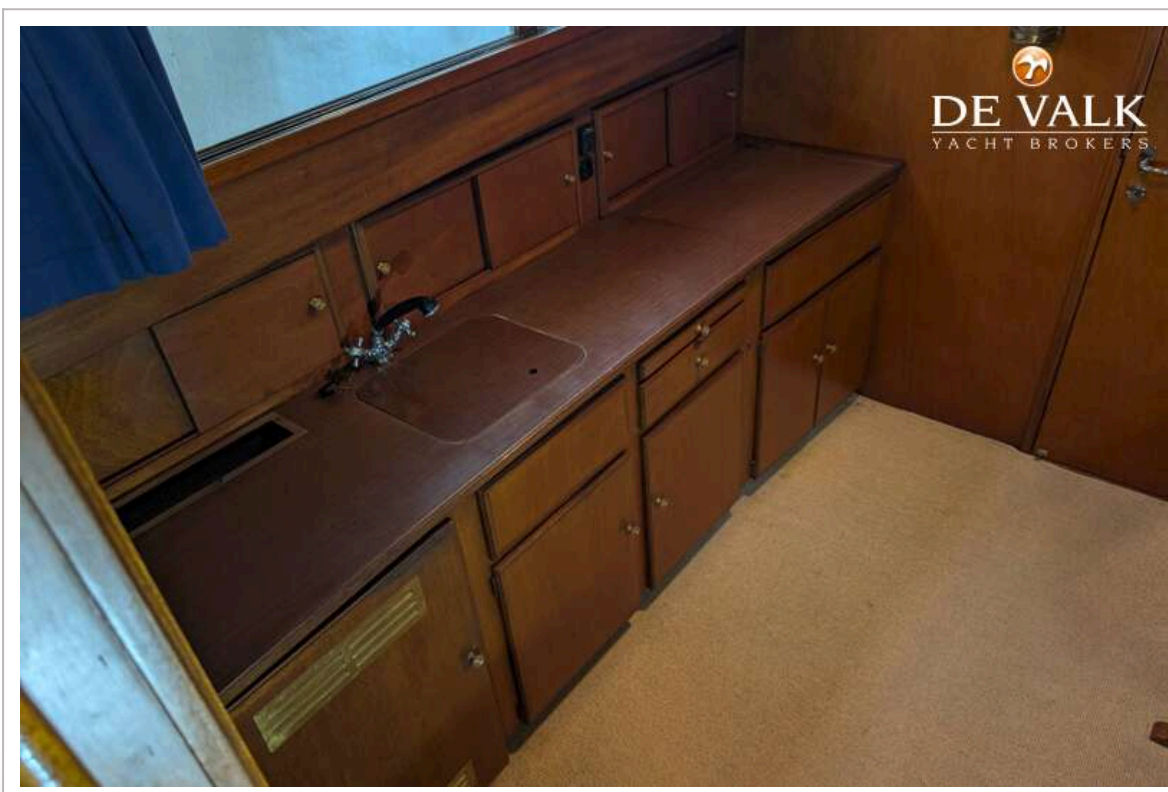
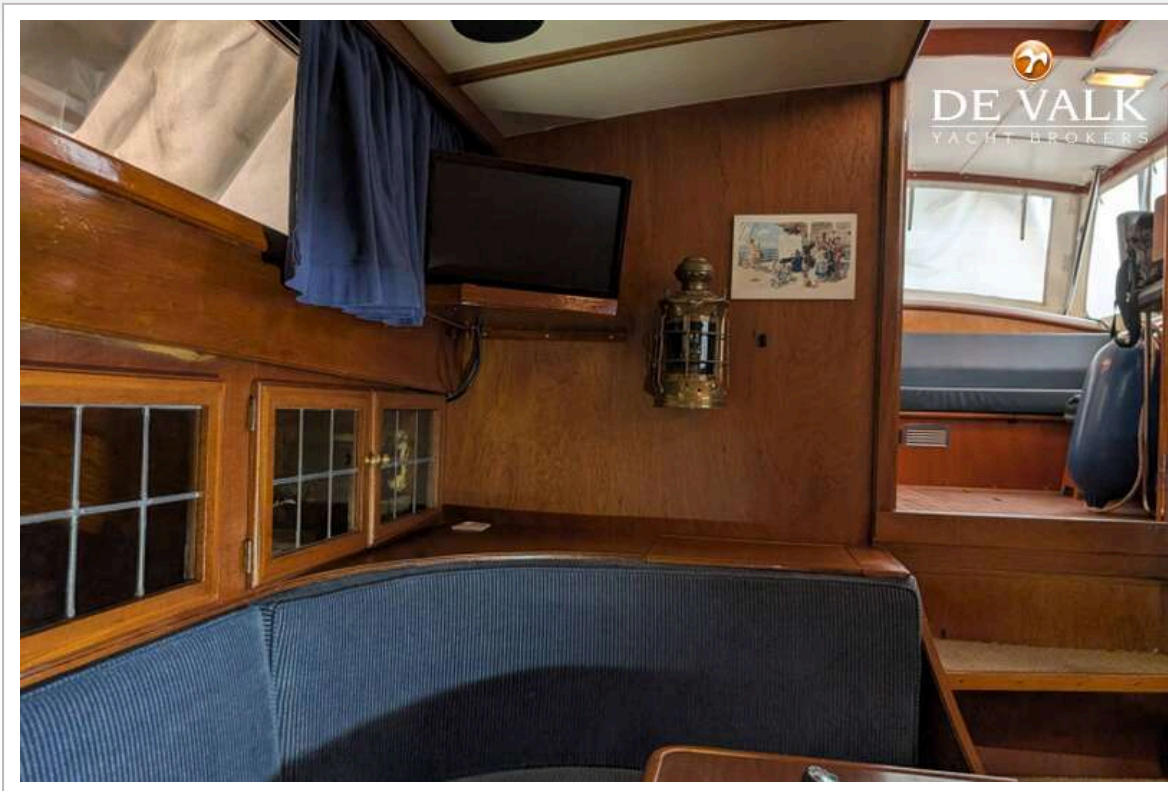
SUPER KAAGKUIJZER VISCH 45



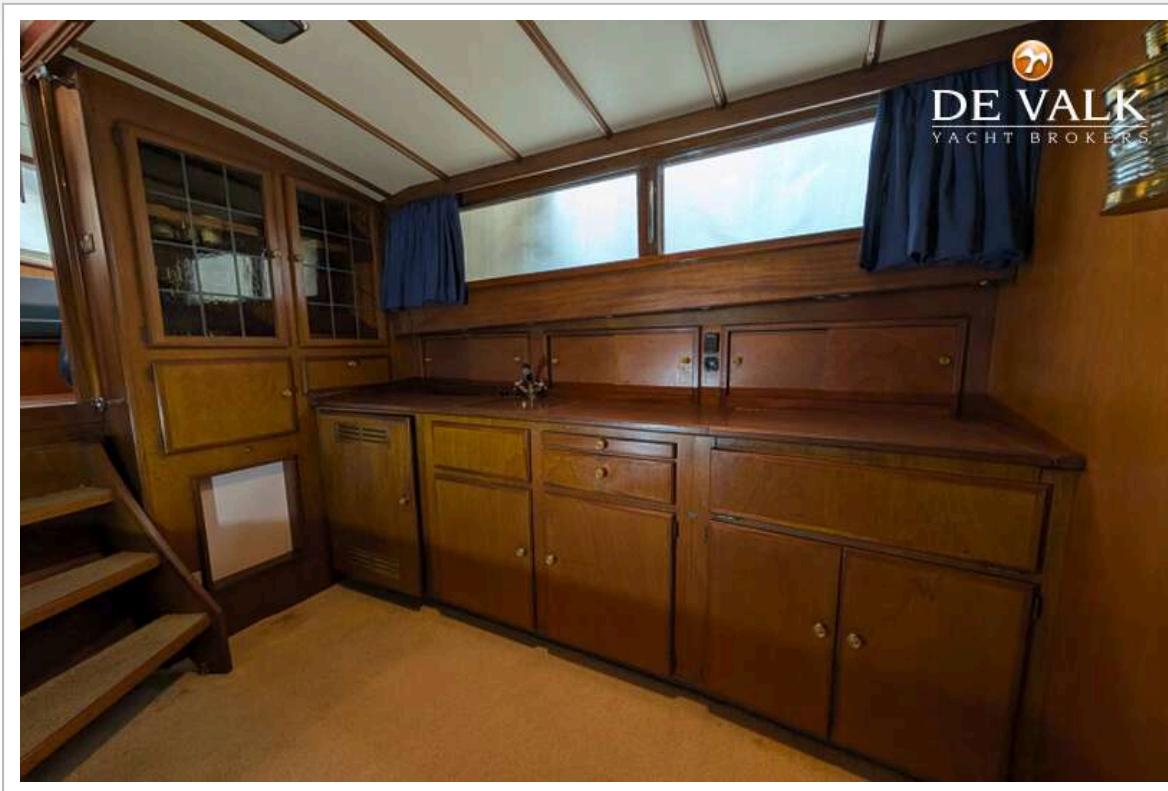
SUPER KAAGKRUISER VISCH 45



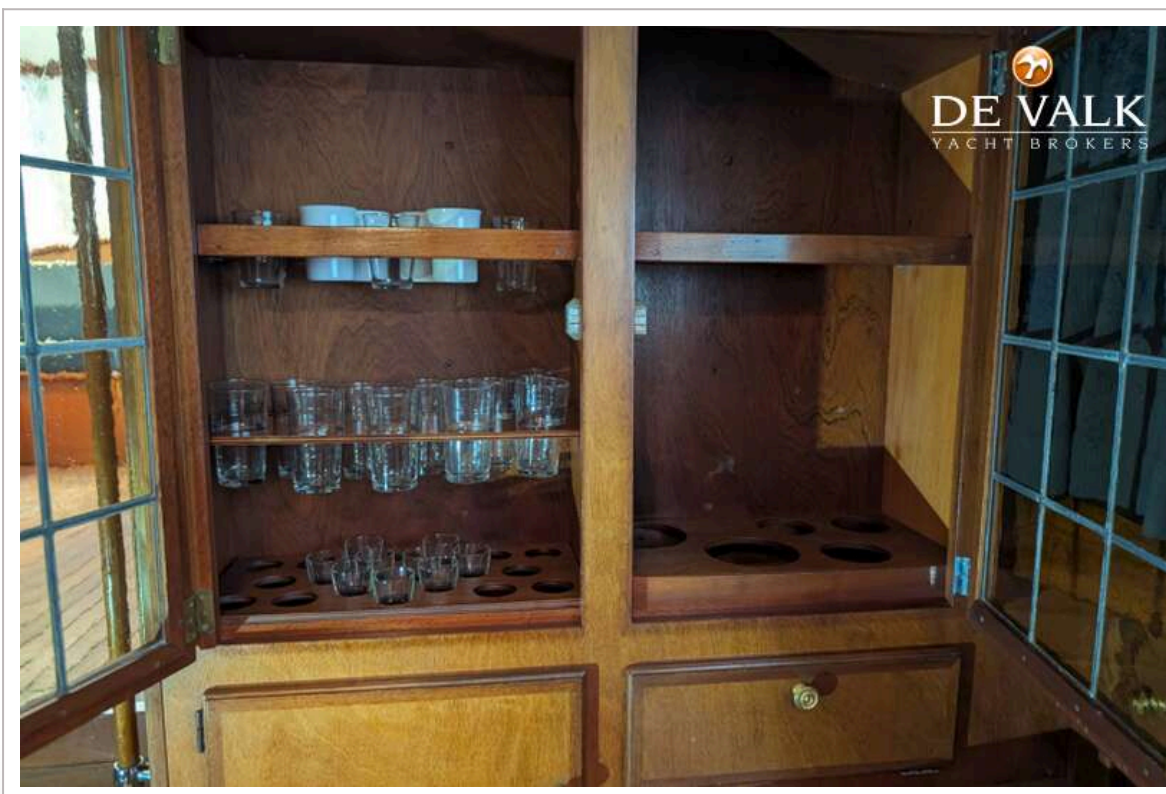
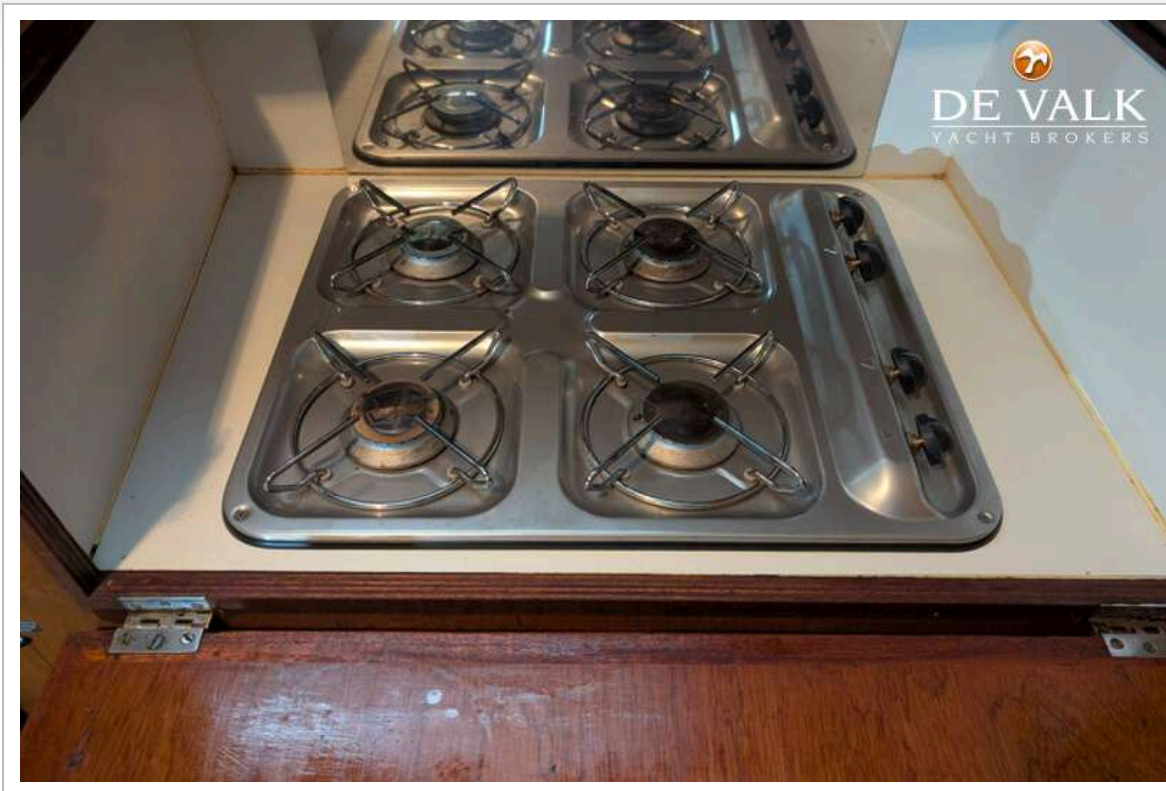
SUPER KAAGKUIZER VISCH 45



SUPER KAAGKRUISER VISCH 45



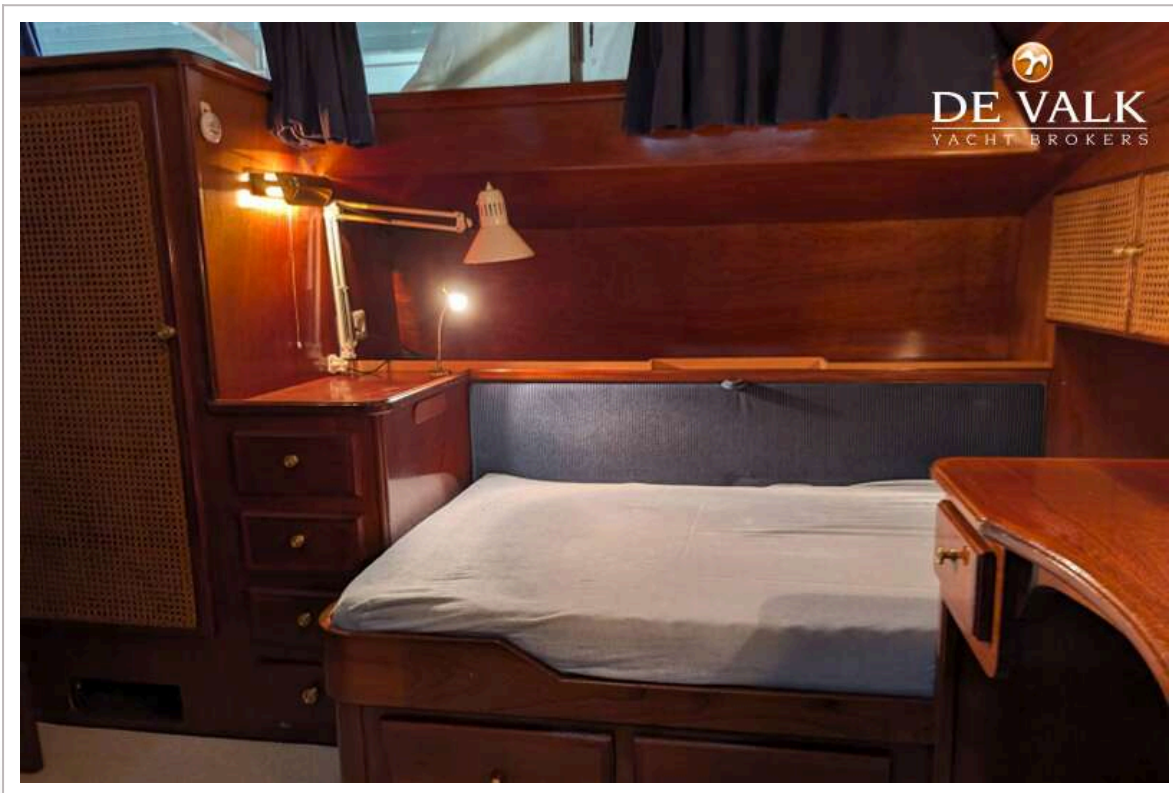
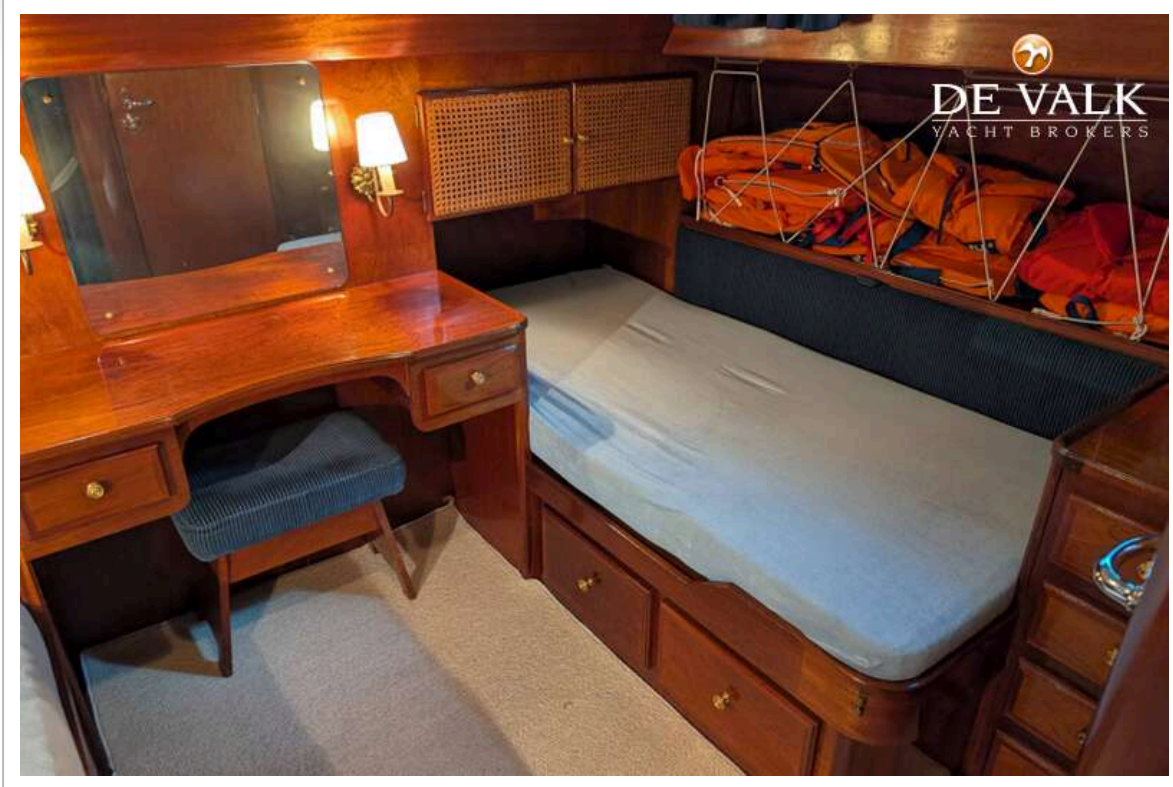
SUPER KAAGKUIJZER VISCH 45



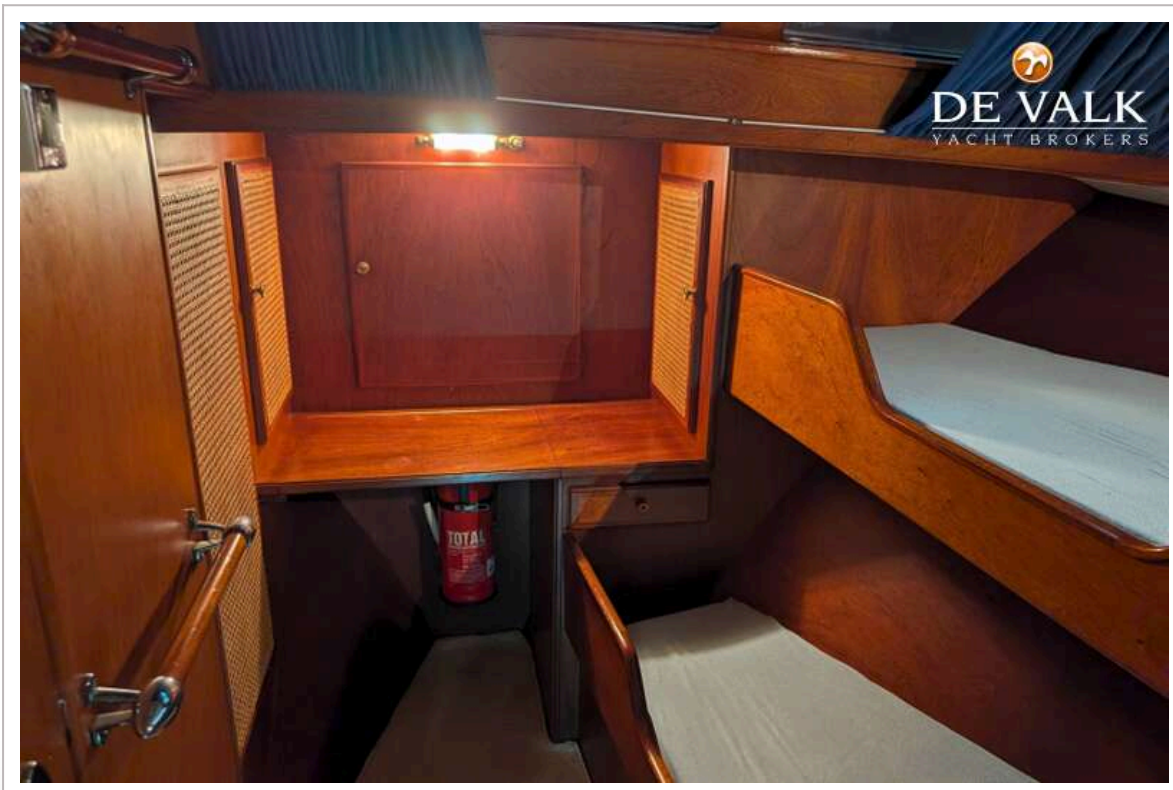
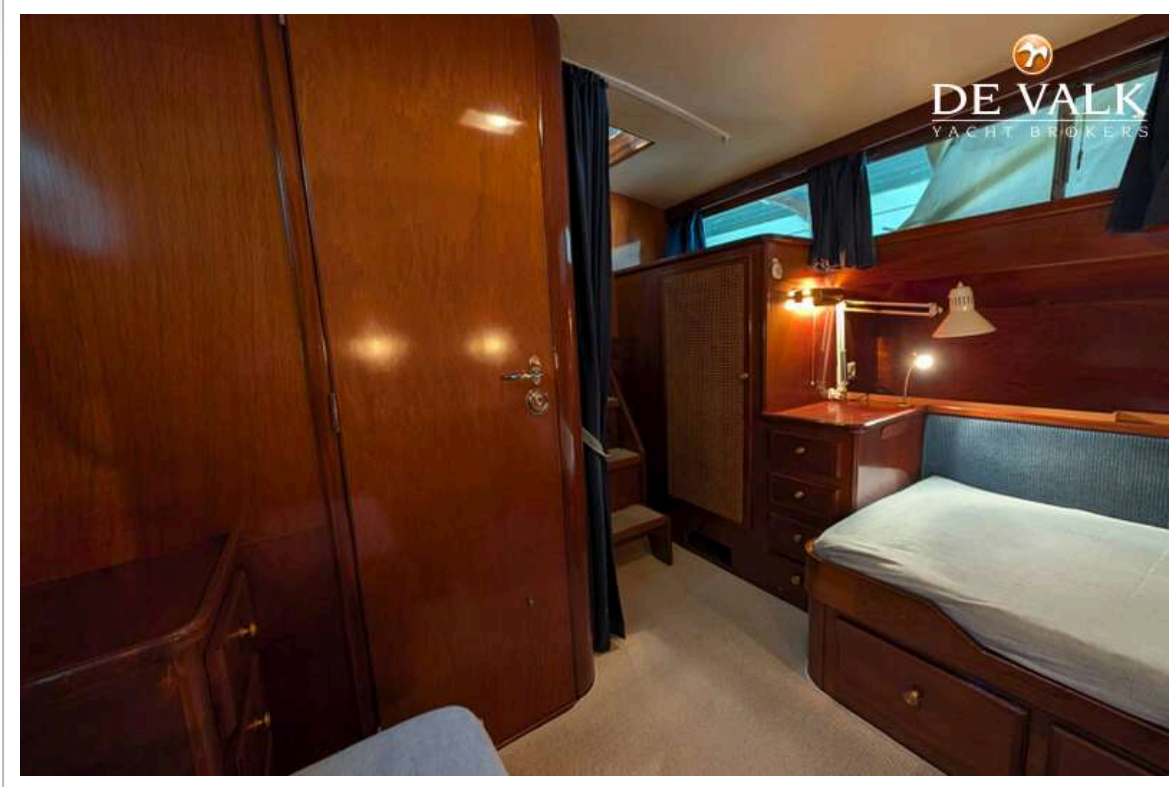
SUPER KAAGKRUISER VISCH 45



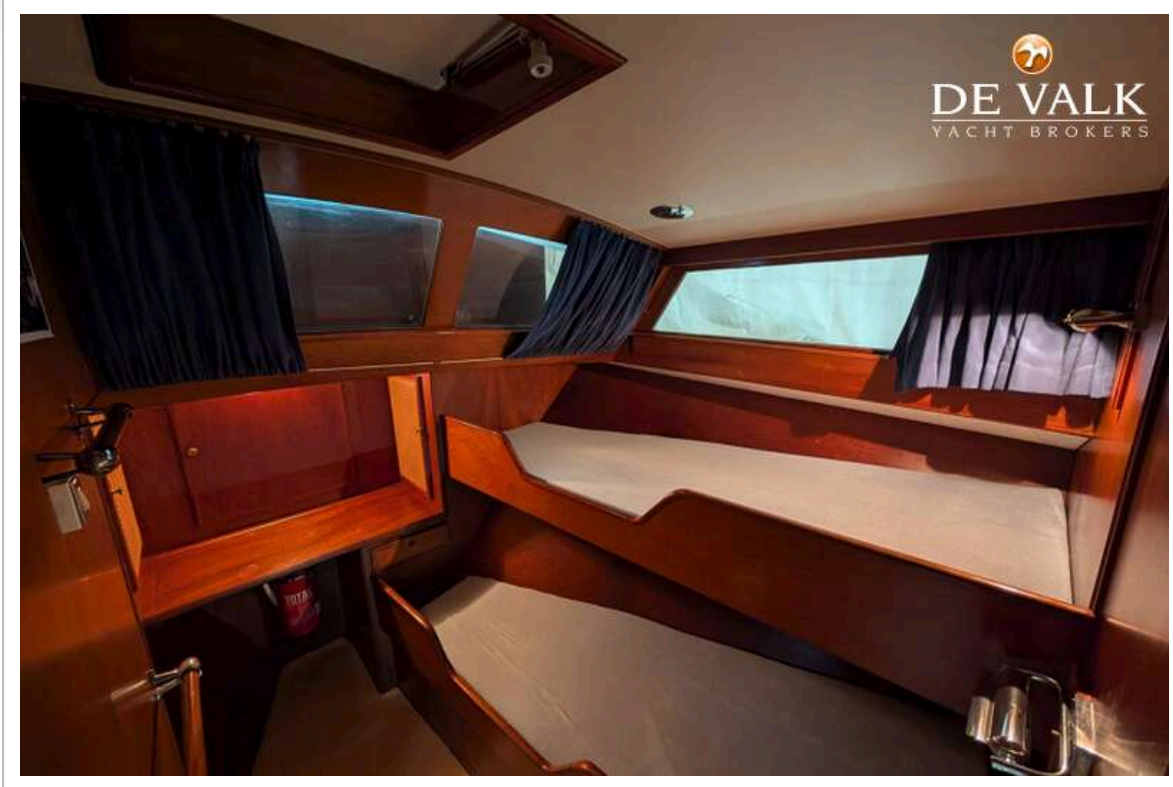
SUPER KAAGKRUISER VISCH 45



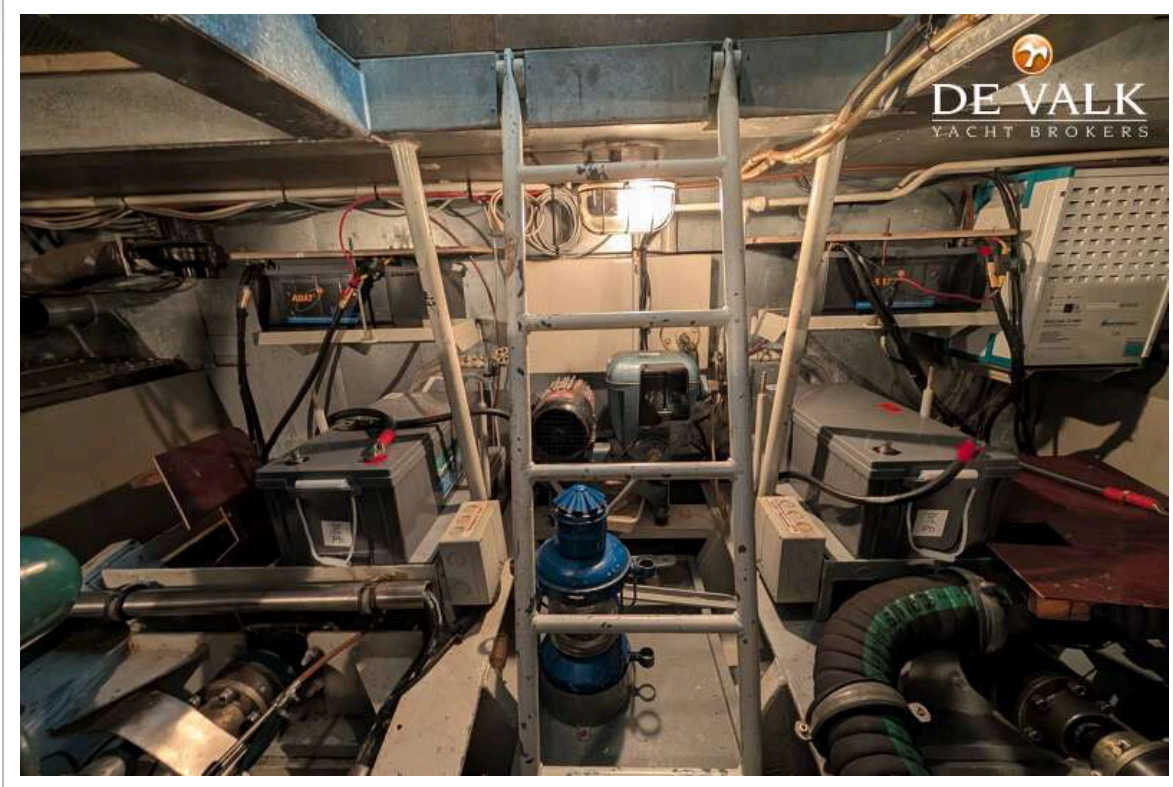
SUPER KAAGKUIZER VISCH 45



SUPER KAAGKUIZER VISCH 45



SUPER KAAGKRUISER VISCH 45



SUPER KAAGKUIZER VISCH 45

