



DE VALK
YACHT-BROKERS



PROTON 28L



DE VALK
YACHT BROKERS

PROTON 28L

BROKER'S COMMENTS

The Proton 28 Lounge (built 2022) combines luxury, comfort and power. Equipped with a Mercury 3.0L V6 diesel (270 hp), bow thruster and 12" Garmin navigation, this tender delivers ultimate cruising pleasure. The aluminum hull with eco teak deck, spacious swim platform and stylish convertible top exude quality. Always stored indoors during the winter. Features include hot/cold water, electric toilet, dimmable cockpit lighting, premium audio system and extra fridge. Perfect for lounge cruising and waterskiing.

Sjoerd Paddenburg

SPECIFICATIONS

Dimensions	8.85 x 2.70 x 0.60 (m)	Builder	Proton Yachts
Built	2021	Cabins	1
Material	Aluminium	Berths	2
Engine(s)	1 x Mercruiser 3.0 V6 diesel	Hp/Kw	270.00 (hp), 198.72 (kw)
Asking price	€ 189.000 (VAT Paid)	Lying	at sales office

CONTACT

Sales office	De Valk Loosdrecht B.V.	Telephone	+31 (0)35 582 90 30
Address	't Breukeleveense Meentje 6 1231LM Loosdrecht / Wijdmeren NL	E-mail	loosdrecht@devalk.nl

DISCLAIMER

These particulars are given in good faith as supplied but cannot be guaranteed.



GENERAL

Model	PROTON 28L
Type	motor yacht
LOA (m)	8,85
LWL (m)	8,30
Beam (m)	2,70
Draft (m)	0,60
Air draft (m)	1,65
Year built	2021
Launched	2022
Builder	Proton Yachts
Country	The Netherlands
Displacement (t)	3,3
CE norm	C
Hull material	aluminium
Hull colour	Champagne
Hull thickness (mm)	5
Hull shape	Fast Displacement Hull
Rubbing strake	stainless steel
Deck material	aluminium
Deck finish	synthetic teak
Cockpit deck finish	synthetic teak
Antifouling (year)	2022
Window material	glass
Deckhatch	yes
Fuel tank (litre)	300
Level indicator (fuel tank)	On Garmin
Freshwater tank (litre)	98
Level indicator (freshwater)	On Garmin
Blackwater tank (litre)	98
Level indicator (blackwater)	On Garmin



PROTON 28L

Blackwater tank extraction	deck extraction + pump
Wheel steering	hydraulic
Outside helm position	yes
More info on hull	Polished in 2024

ACCOMMODATION

Cabins	1
Berths	2
Floor	Synthetic teak
Sink	stainless steel
Fridge	seperate cooling shelf + Dometic 65L
Hot water system	220V + engine Boiler
Water pressure system	electrical
Owners cabin	v-bed
Wardrobe	shelves
Toilet	separate
Toilet system	electric Vetus

MACHINERY

No of engines	1
Make	MerCruiser
Type	3.0 V6
HP	270
kW	198.72
Fuel	diesel
Maximum speed (kn)	23
Engine cooling system	freshwater heat exchanger
Drive	shaft
Engine controls	electrical
Gearbox	hydraulic
Bowthruster	electric Quick



Propeller type	fixed
Propeller shaft material	stainless steel
Shaft lubrication	water
Electric bilge pump	yes
Electrical installation	12V/230V
Start battery	Red top Optima
Service battery	Victon AGM 12/220
Bowthruster battery	Red top Optima
Battery monitor	On Garmin display
Battery charger/inverter	Victron Multiplus 12/3000/120
Diode battery combiners	yes
Shorepower	with cable

NAVIGATION

Multi control display	Garmin
Depth sounder/log	Garmin display
Plotter/GPS	Garmin
Navigation lights	yes

EQUIPMENT

Fixed windscreen	Glass
Cockpit cover	yes
Bimini	yes
Window cover	yes
Cockpit cushions	yes
Bathing platform	yes
Boarding ladder	stainless steel
Deck shower	Warm water
Rope cutter	yes
Fenders	yes
Mooring lines	yes



PROTON 28L

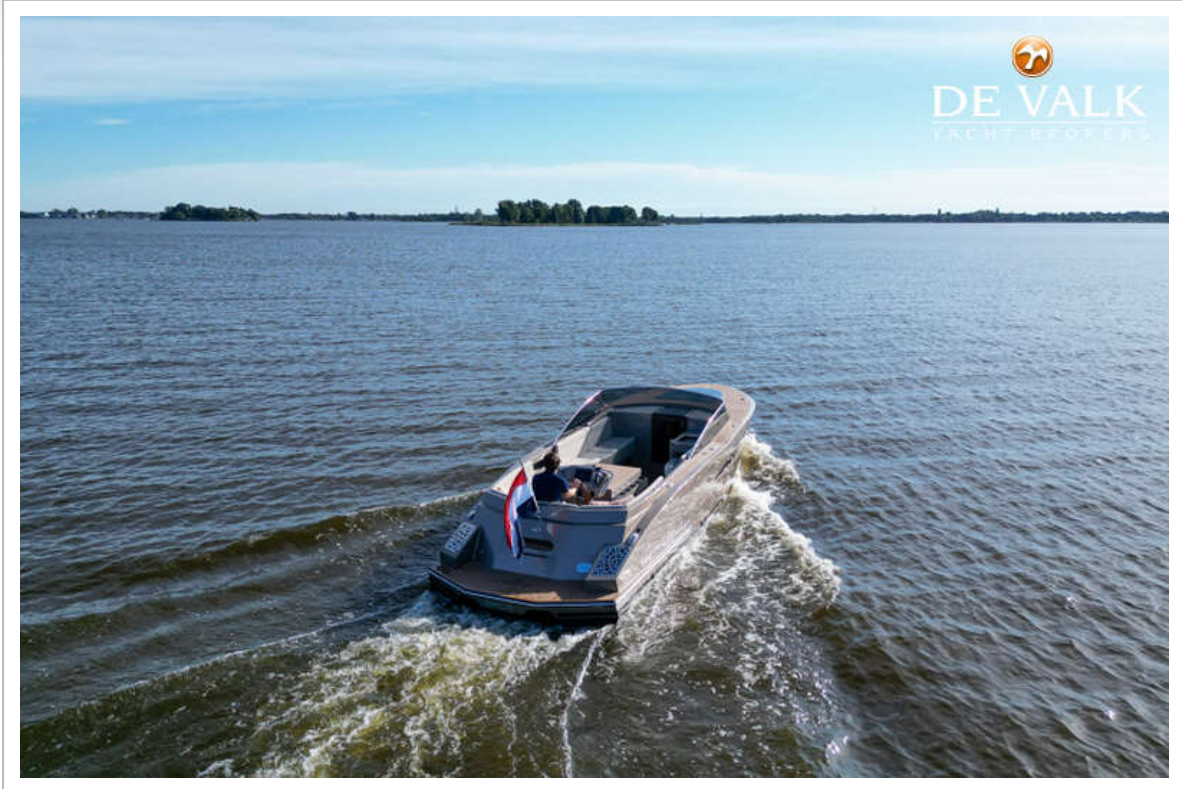
Radio	Fusion
Sub-woofer	yes
Cockpit speakers	4x LTC



PROTON 28L



PROTON 28L



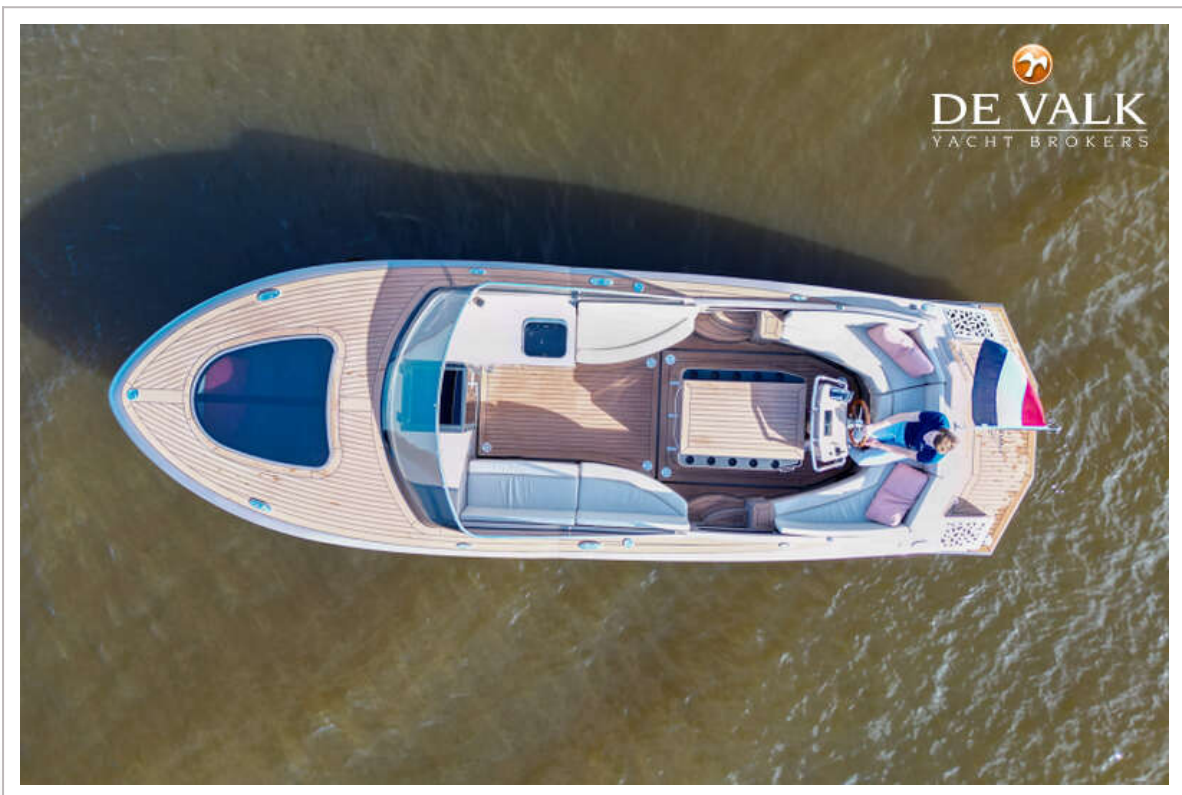
PROTON 28L



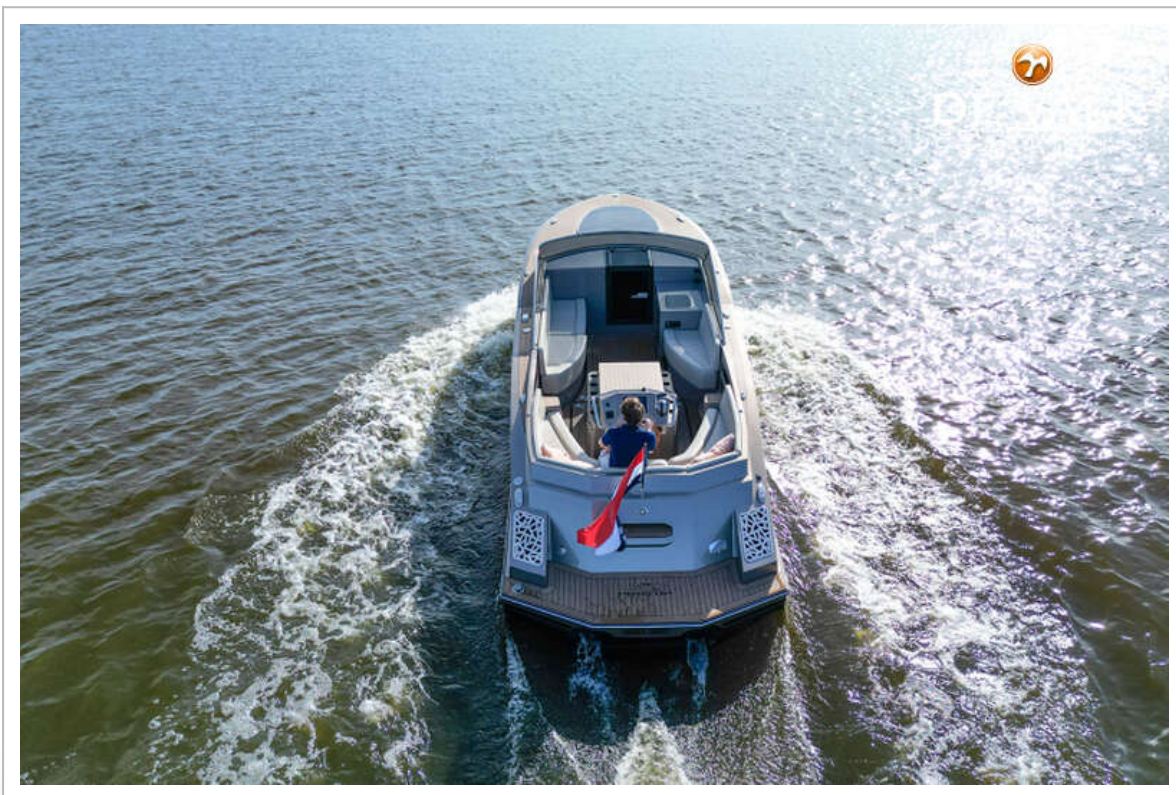
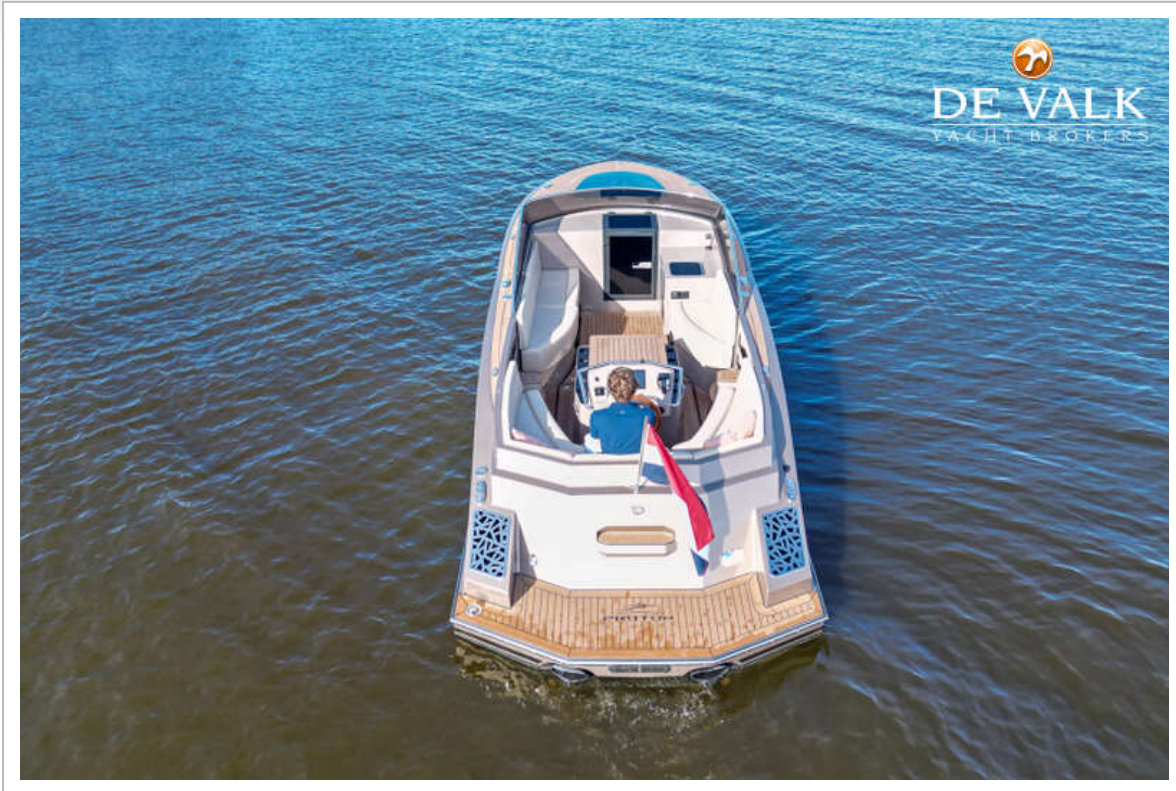
PROTON 28L



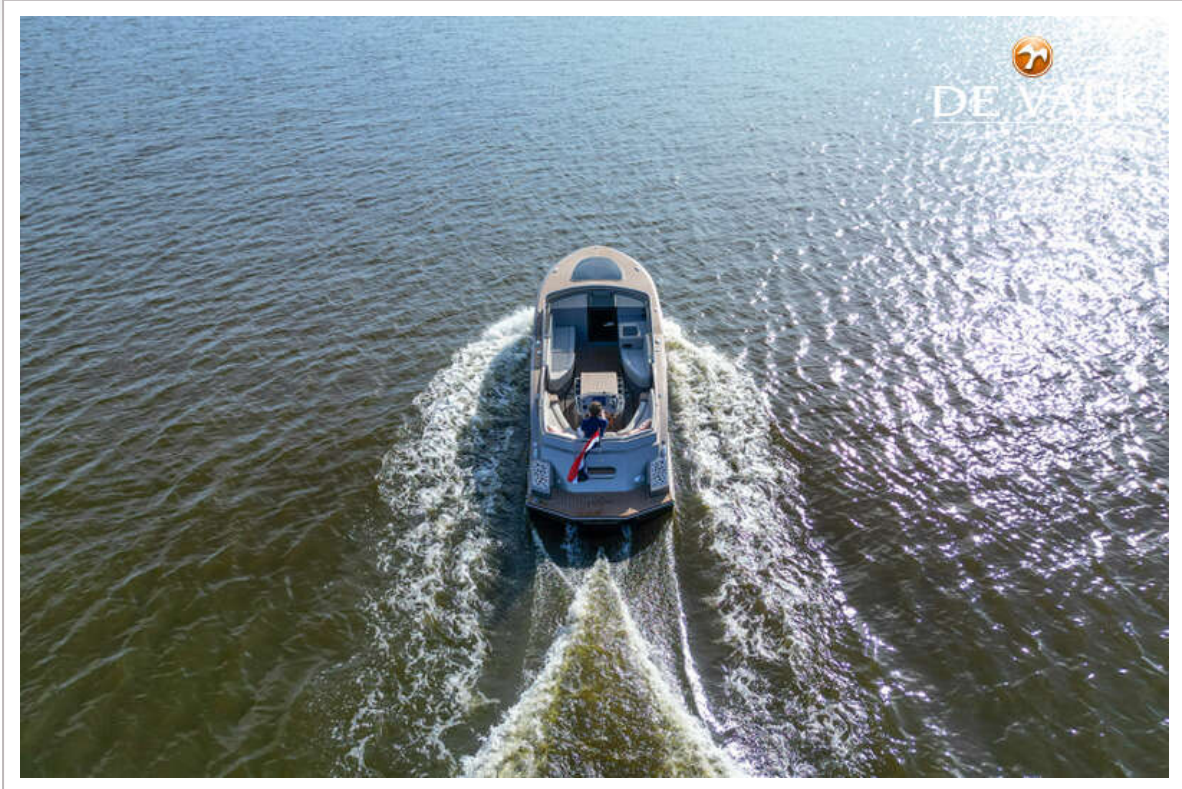
PROTON 28L



PROTON 28L



PROTON 28L



PROTON 28L



PROTON 28L



PROTON 28L



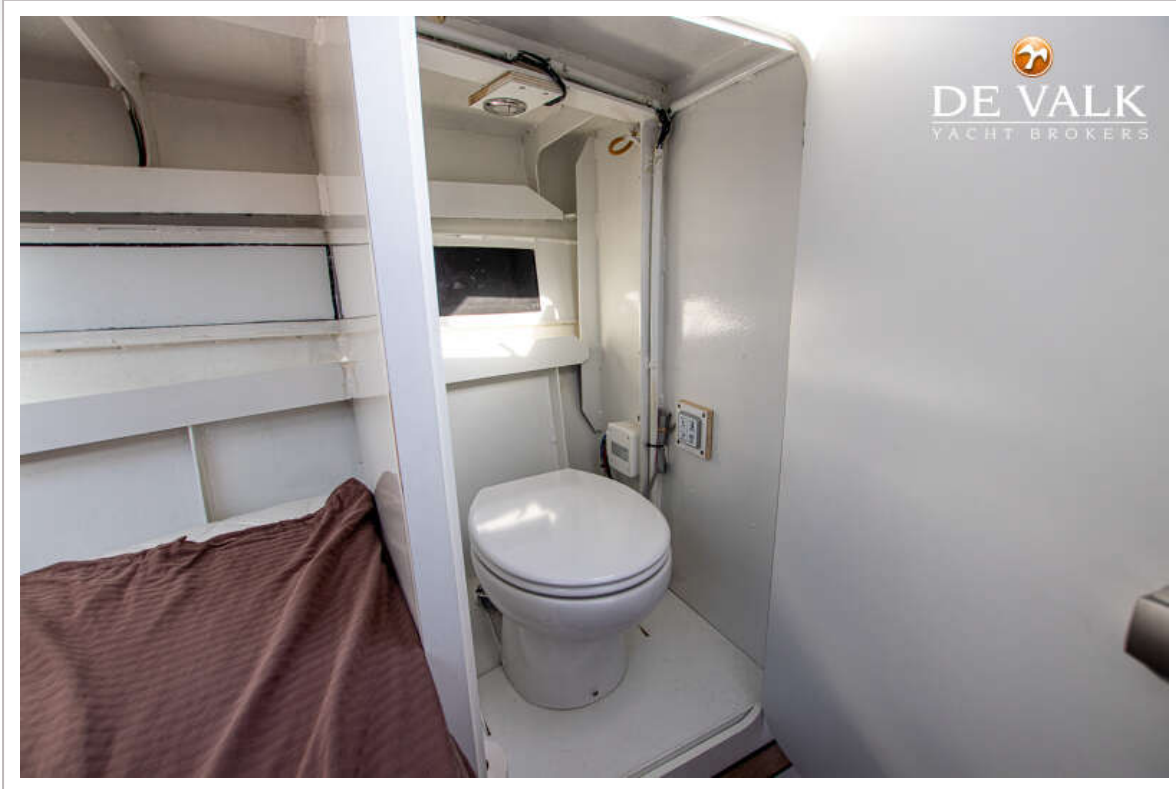
PROTON 28L



PROTON 28L



PROTON 28L



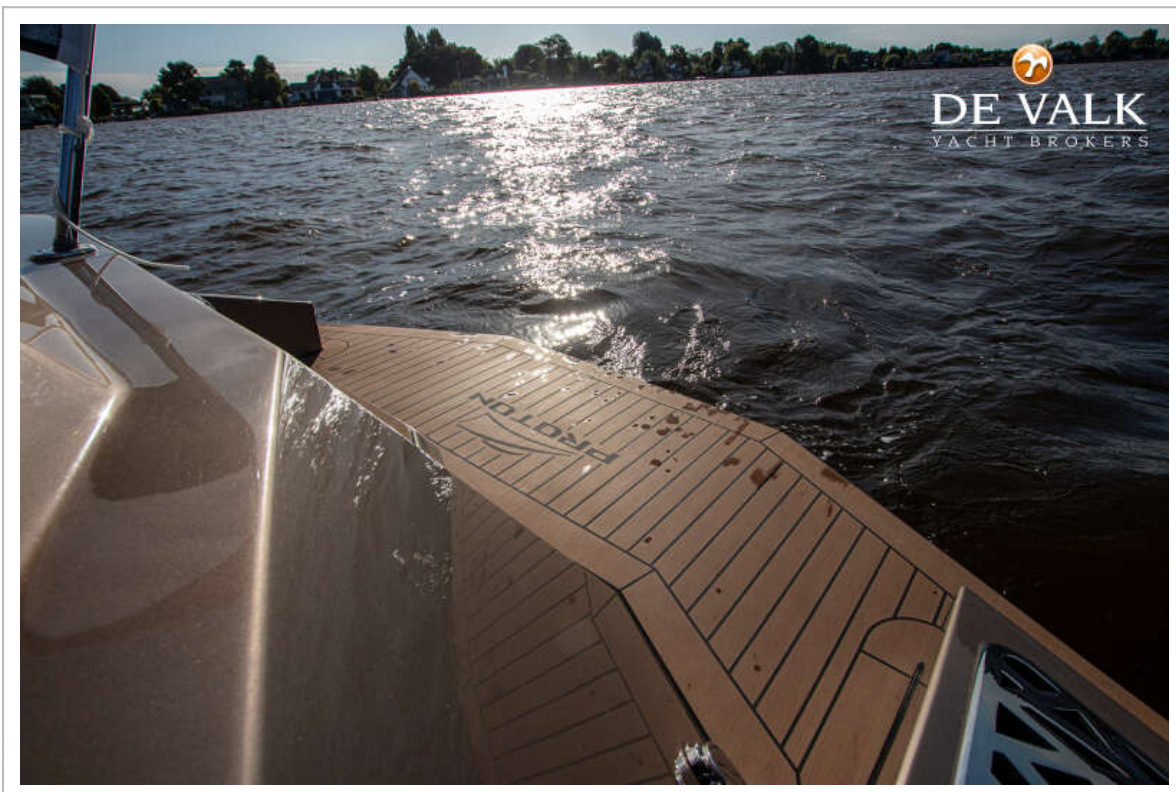
PROTON 28L



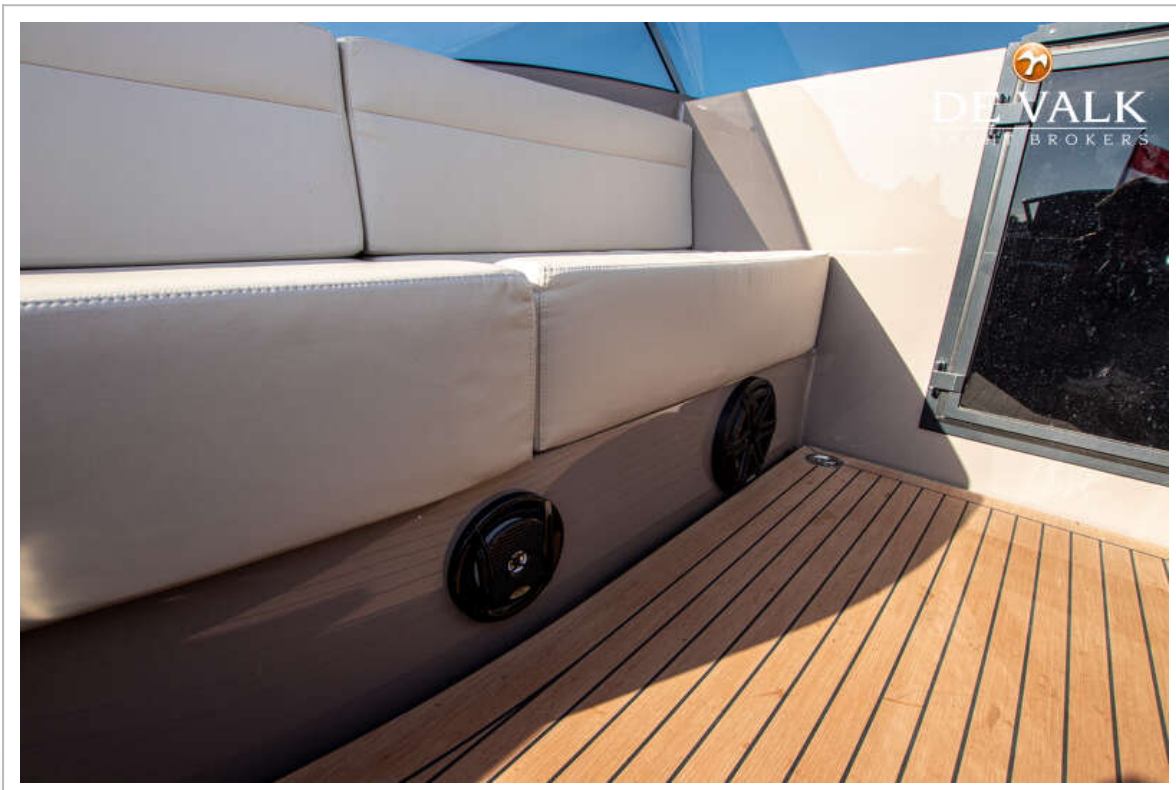
PROTON 28L



PROTON 28L



PROTON 28L



PROTON 28L



PROTON 28L



