



HAINES 32 SEDAN



HAINES 32 SEDAN

BROKER'S COMMENTS

The Haines 32 Sedan (2014) is a 9.75 m GRP motor yacht with CE-C certification, ideal for inland and coastal cruising. Powered by a 110 hp Yanmar diesel engine, bow and stern thrusters, and a generator, she is a very complete vessel. The cherry wood interior features a saloon with electric sunroof, spacious galley with two-burner hob, and a separate bathroom with shower. Equipped with solar panels, Garmin navigation, and a generous aft deck with sliding roof and swim platform. The Haines 32 Sedan is now available for viewing in our covered sales marina.

Julian de Heer

SPECIFICATIONS

Dimensions	9.75 x 3.51 x 0.81 (m)	Builder	
Built	2014	Cabins	1
Material	GRP	Berths	4
Engine(s)	1 x Yanmar 4JH4-TE diesel	Hp/Kw	110.00 (hp), 80.96 (kw)
Asking price	€ 169.500 (VAT Paid)	Lying	at sales office

CONTACT

Sales office	De Valk Loosdrecht B.V.	Telephone	+31 (0)35 582 90 30
Address	't Breukeleveense Meentje 6 1231LM Loosdrecht / Wijdmeren NL	E-mail	loosdrecht@devalk.nl

DISCLAIMER

These particulars are given in good faith as supplied but cannot be guaranteed.



HAINES 32 SEDAN

GENERAL

Model	HAINES 32 SEDAN
Type	motor yacht
LOA (m)	9,75
Beam (m)	3,51
Draft (m)	0,81
Air draft min (m)	2,51
Year built	2014
Country	United Kingdom
Displacement (t)	6,5
CE norm	C
Hull material	GRP
Hull colour	white
Hull shape	hard chine
Superstructure material	GRP
Rubbing strake	stainless steel
Deck material	GRP
Deck finish	synthetic teak
Cockpit deck finish	synthetic teak
Antifouling (year)	2025
Window frame	aluminium
Window material	glass
Deckhatch	1x
Mast can be lowered	manual
Fuel tank (litre)	stainless steel 320
Fuel tank 2 (litre)	stainless steel 320
Level indicator (fuel tank)	yes
Freshwater tank (litre)	stainless steel 350
Level indicator (freshwater)	yes
Blackwater tank (litre)	polyethylene 120
Level indicator (blackwater)	yes



HAINES 32 SEDAN

Wheel steering	hydraulic
Inside helm position	Ultraflex

ACCOMMODATION

Cabins	1
Berths	4
Interior	cherry
Floor	woodprint
Saloon	yes
Headroom saloon (m)	+/- 2,00 m
Sliding roof	electric Webasto
Heating	diesel ducted hot air Eberspächer
Dinette	yes
Sliding door to cockpit	All doors can be opened completely
Galley	yes
Countertop	corian
Sink	stainless steel
Cooker	induction Gaggenau two-burner
Extractor	Gaggenau
Fridge	Isotherm
Freezer	Inside fridge
Hot water system	220V + engine New 2023
Water pressure system	electrical New water pump 2023
Owners cabin	double bed
Wardrobe	shelves
Bathroom	separate
Toilet	separate
Toilet system	electric Tecma
Wash basin	in the bathroom
Shower	separate



HAINES 32 SEDAN

MACHINERY

No of engines	1
Make	Yanmar
Type	4JH4-TE
HP	110
kW	80.96
Fuel	diesel
Maximum speed (kn)	10
Cruising speed (kn)	6.5
Consumption (l/hr)	3
Engine cooling system	freshwater heat exchanger
Drive	shaft
Engine controls	bowden cable
Gearbox	hydraulic
Bowthruster	electric Sidepower
Sternthruster	electric Sidepower
Propeller type	fixed
Propeller blades	3
Propeller shaft material	stainless steel
Shaft lubrication	water
Electric bilge pump	yes
Generator	Panda Fischer
Running hours generator	60
Batteries	6 x 110 Ah Victron AGM 2022
Battery monitor	Victron control panel
Battery charger	900 A Victron
Inverter	1.200 Watt
Solar panel	2x 180 watt
Shorepower	with cable

NAVIGATION



HAINES 32 SEDAN

Depth sounder/log	Garmin GMI 10
VHF	Icom
Rudder angle indicator	VDO
GPS	yes
Plotter	Garmin GPSmap 556
Navigation lights	yes

EQUIPMENT

Winter cover	yes
Cockpit cushions	yes
Cockpit table	yes
Cockpit chairs	yes
Bathing platform	yes
Boarding ladder	stainless steel
Transom door	yes
Anchor	yes
Anchor chain	yes
Windlass	electrical
Deck wash	yes
Sea railing	stainless steel
Grab rail (superstructure)	stainless steel
Wiper	2x
Horn	electric
Fenders	yes
Mooring lines	yes
TV	Panasonic
Radio-cd player	Sony
Surround Sound System	Harman/Kardon
Speakers in salon	Harman/Kardon
Clock - barometer	yes



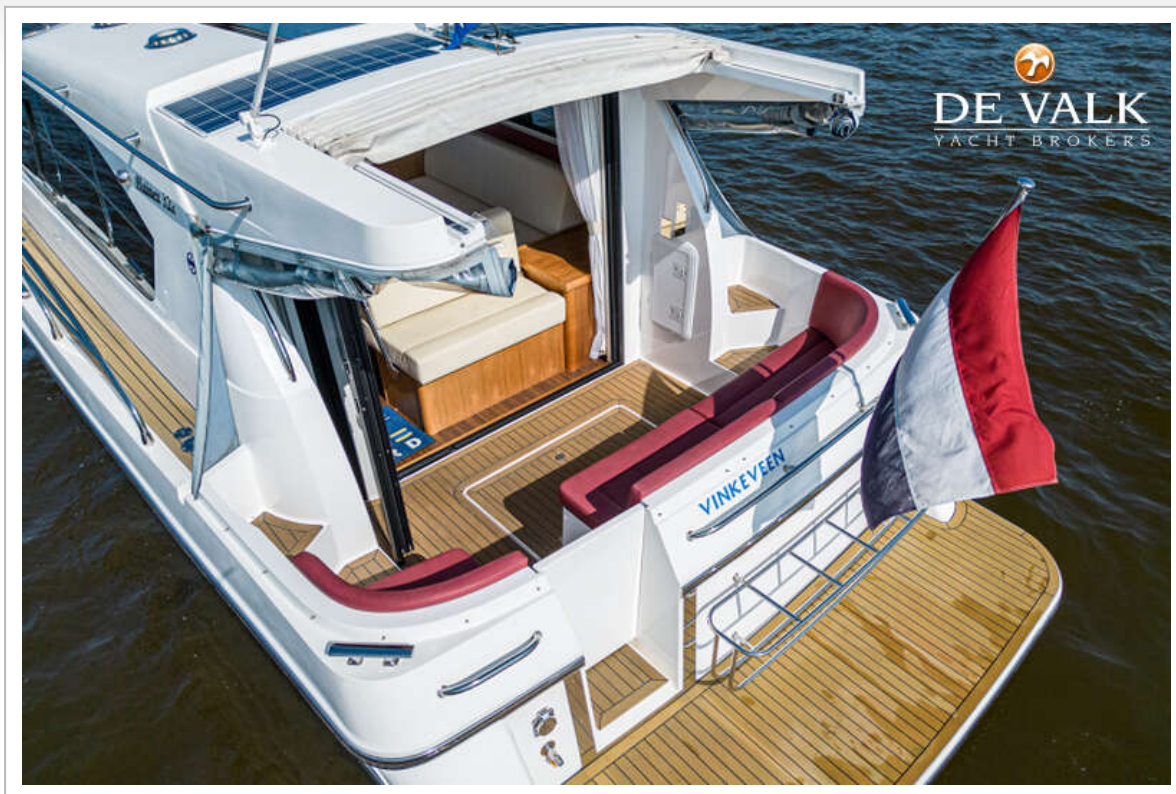
HAINES 32 SEDAN



HAINES 32 SEDAN



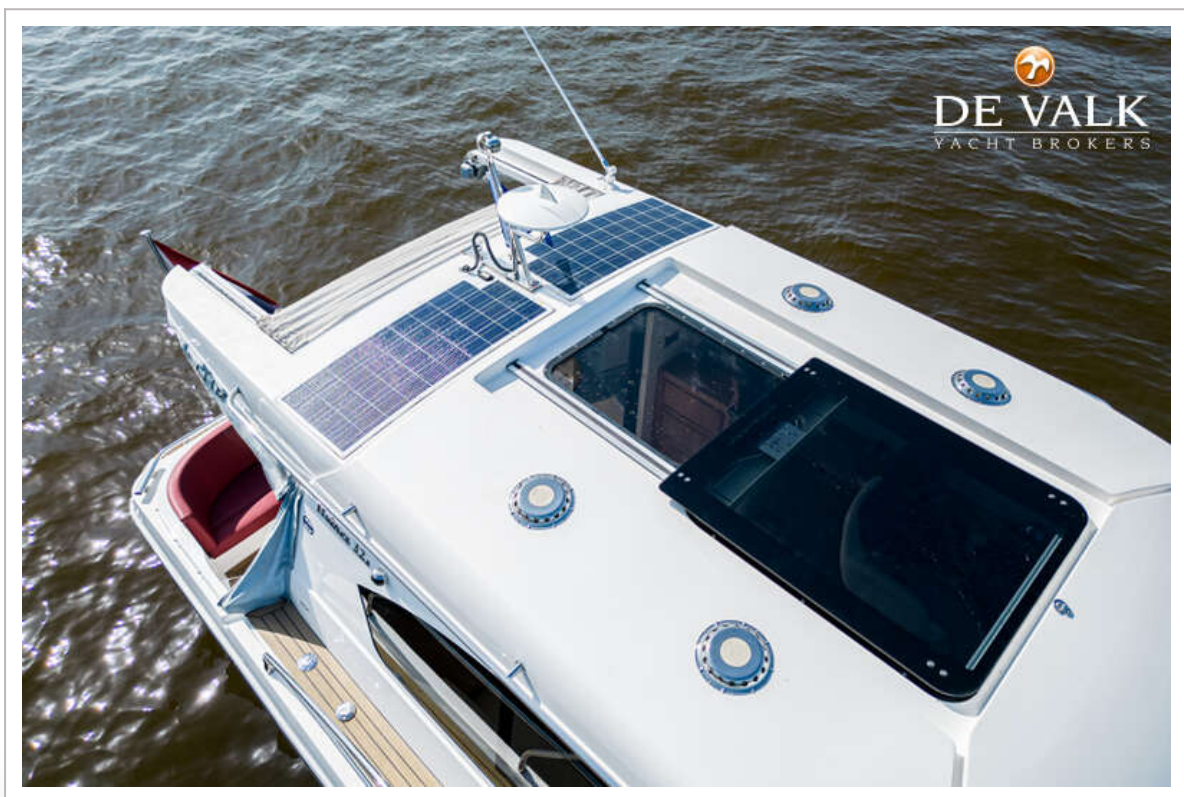
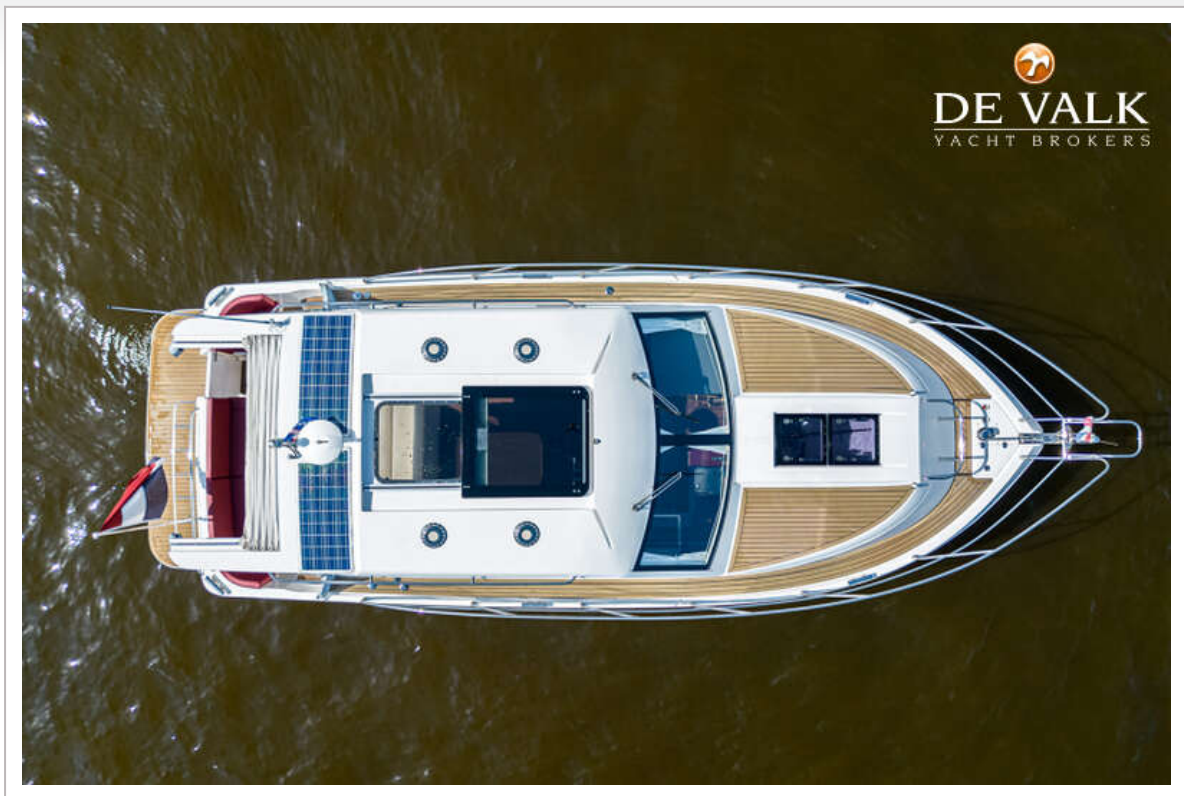
HAINES 32 SEDAN



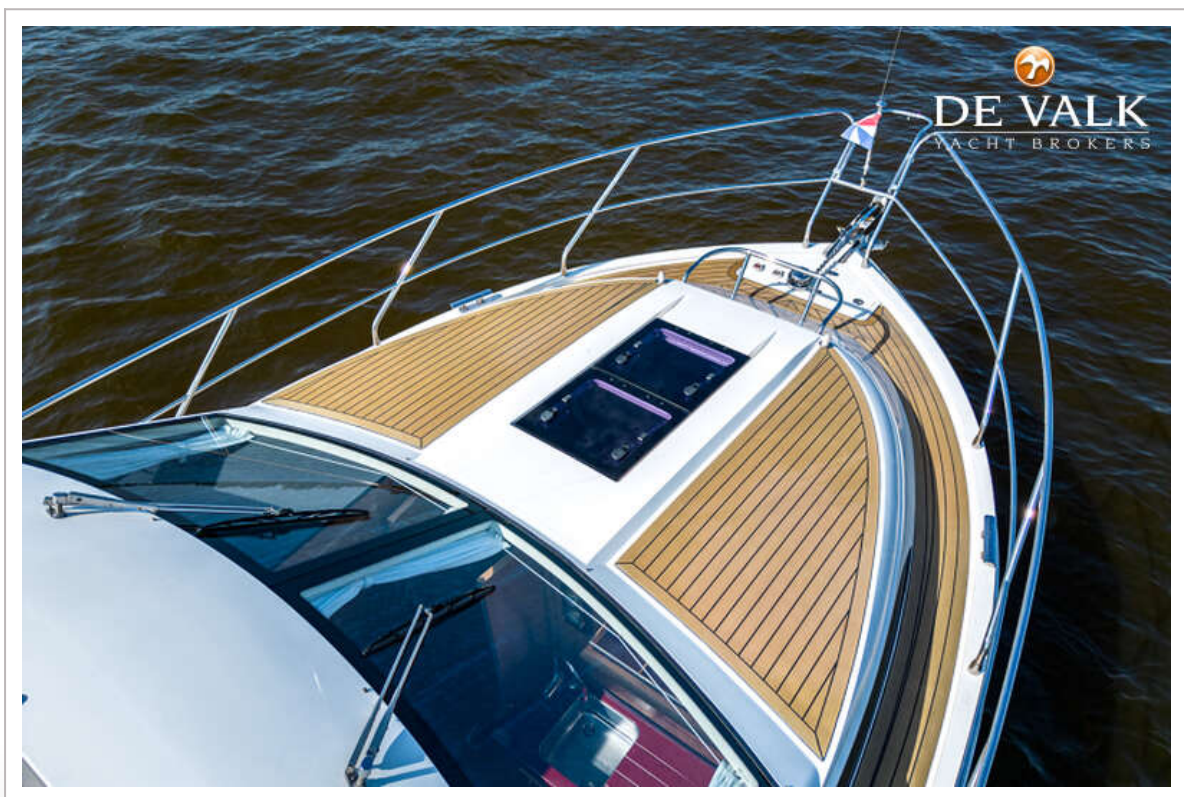
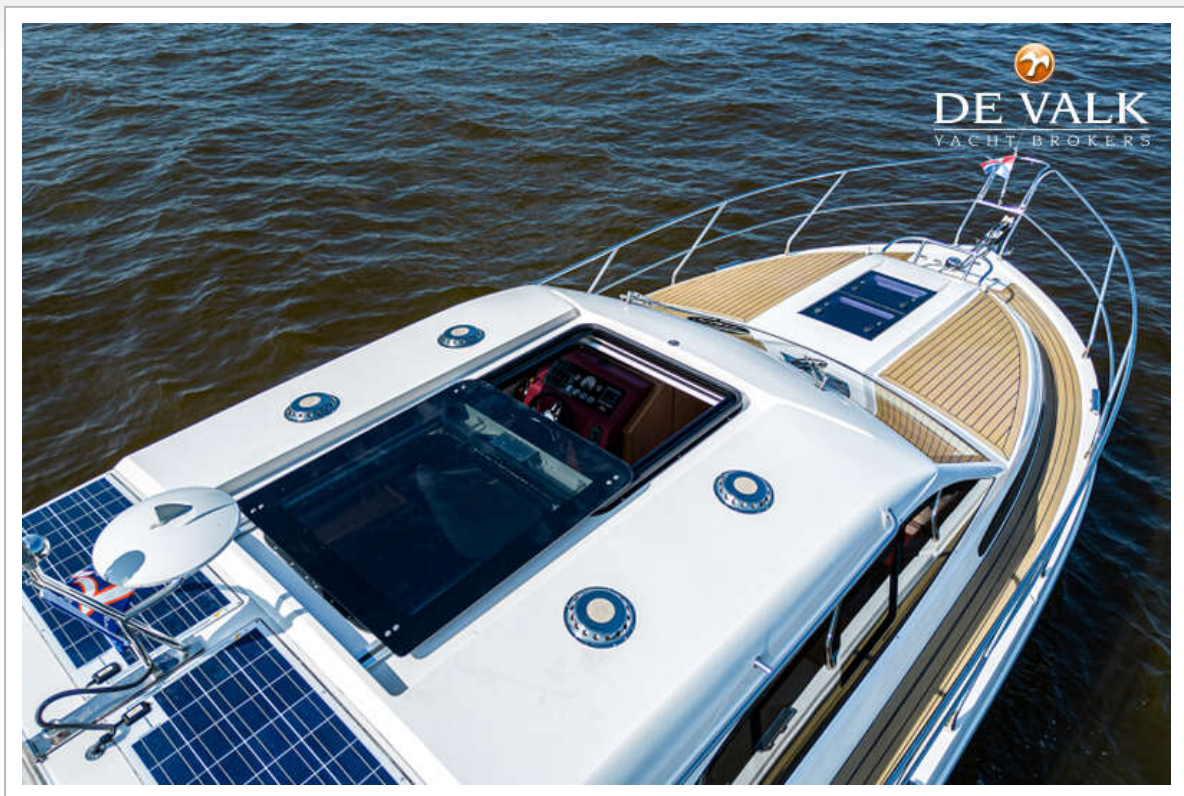
HAINES 32 SEDAN



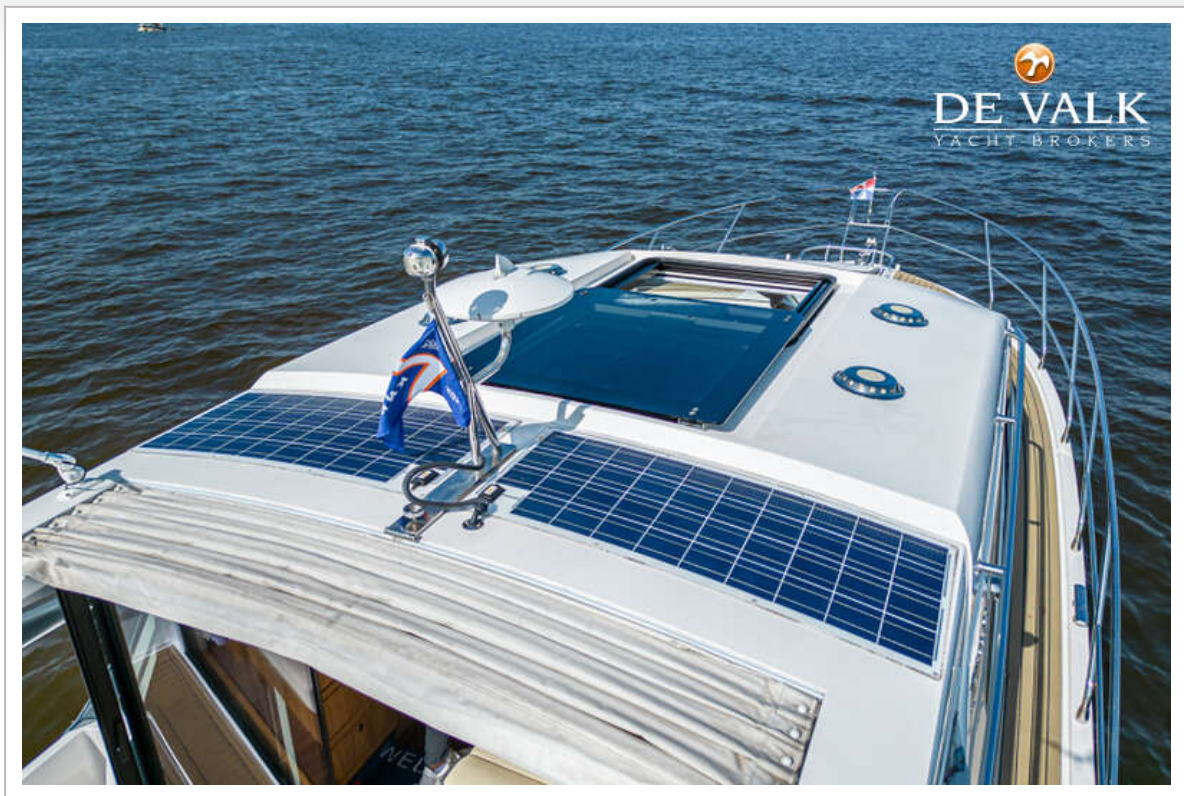
HAINES 32 SEDAN



HAINES 32 SEDAN



HAINES 32 SEDAN



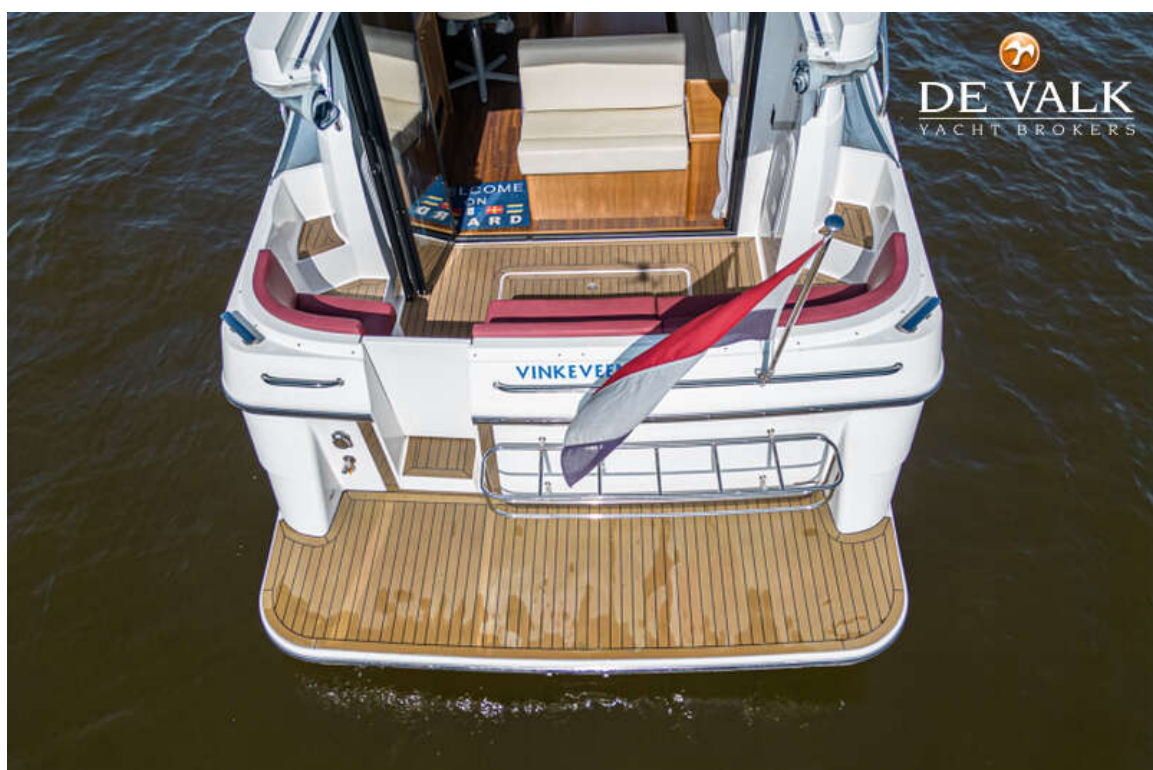
HAINES 32 SEDAN



HAINES 32 SEDAN



HAINES 32 SEDAN



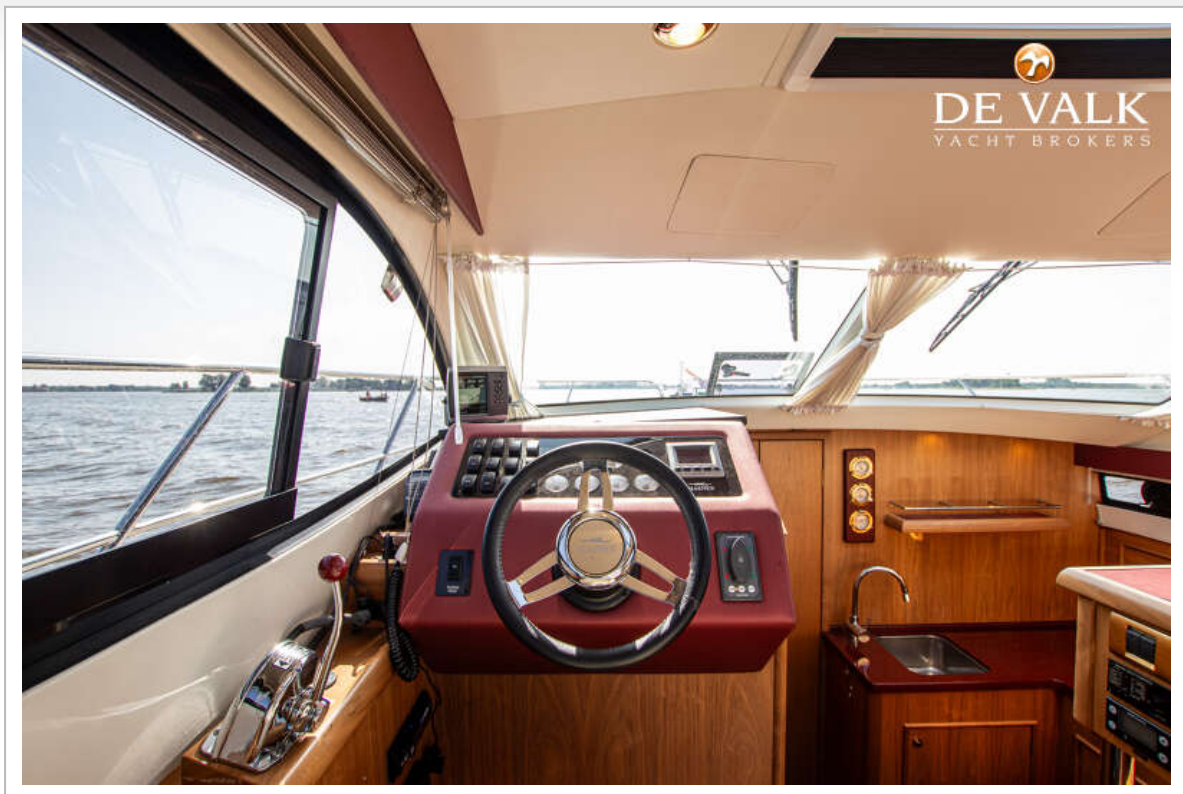
HAINES 32 SEDAN



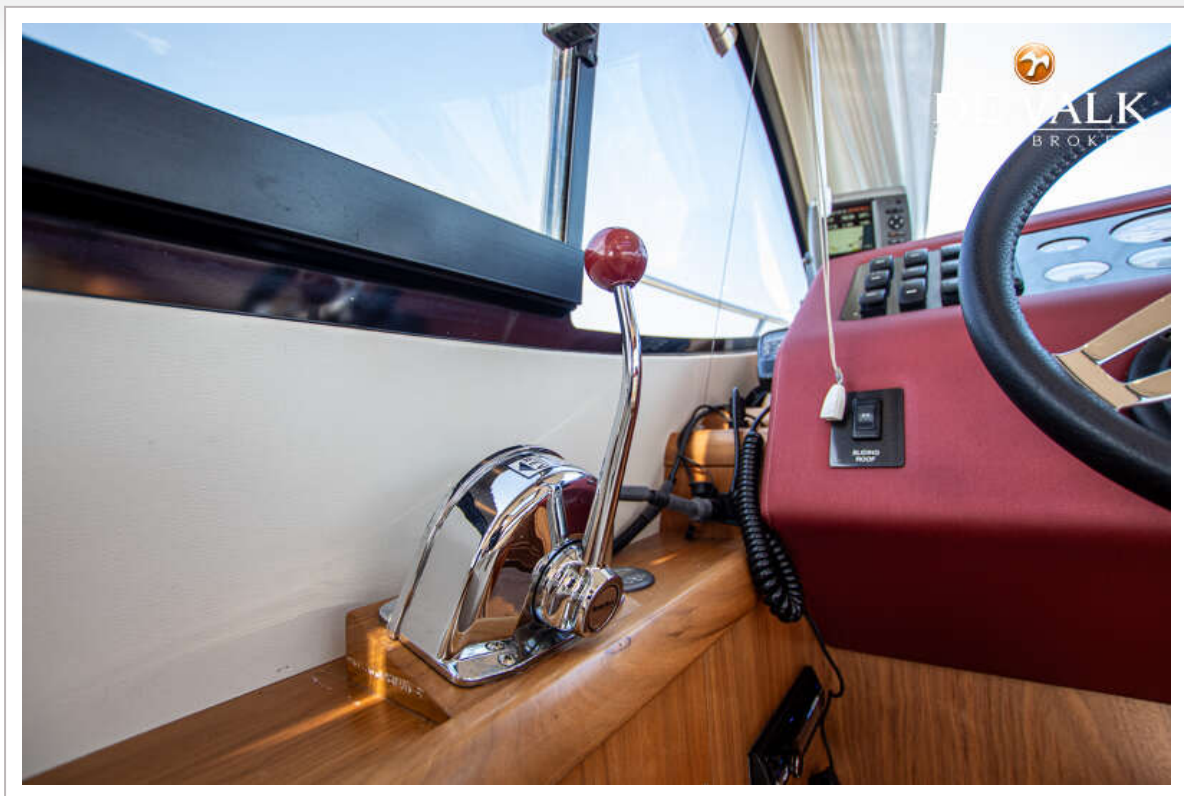
HAINES 32 SEDAN



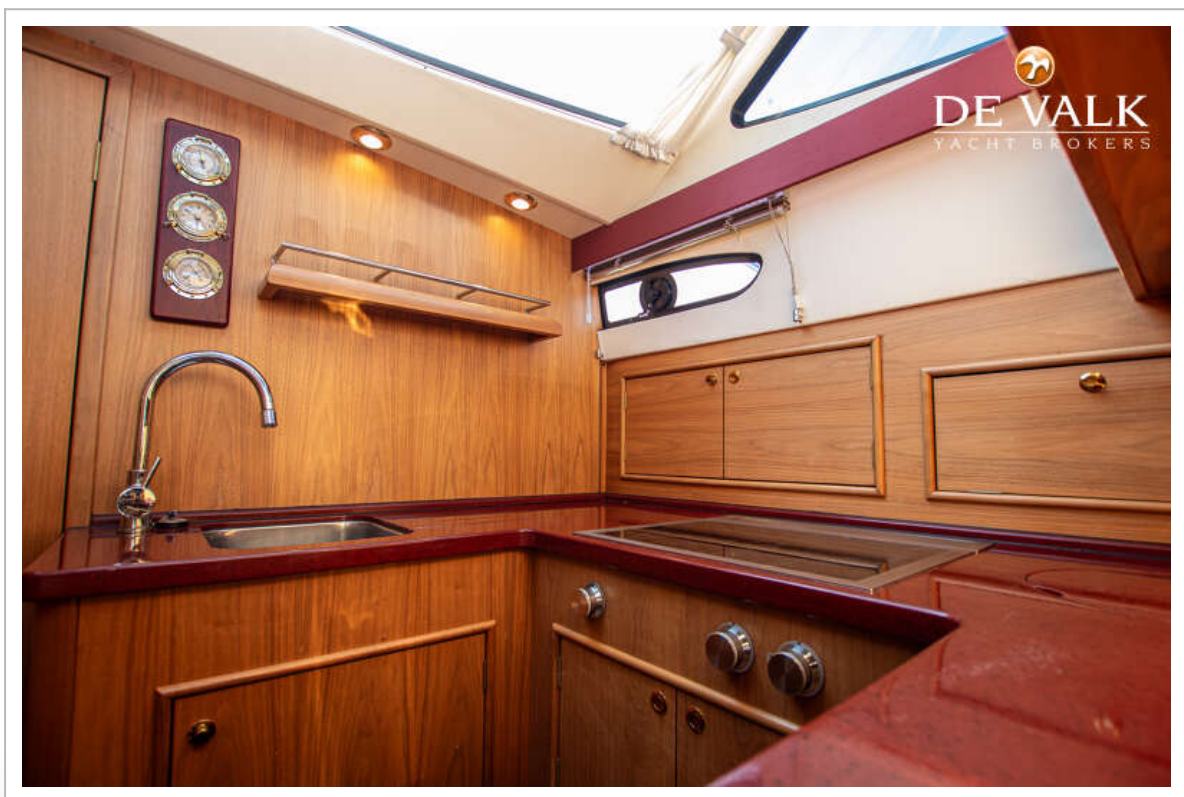
HAINES 32 SEDAN



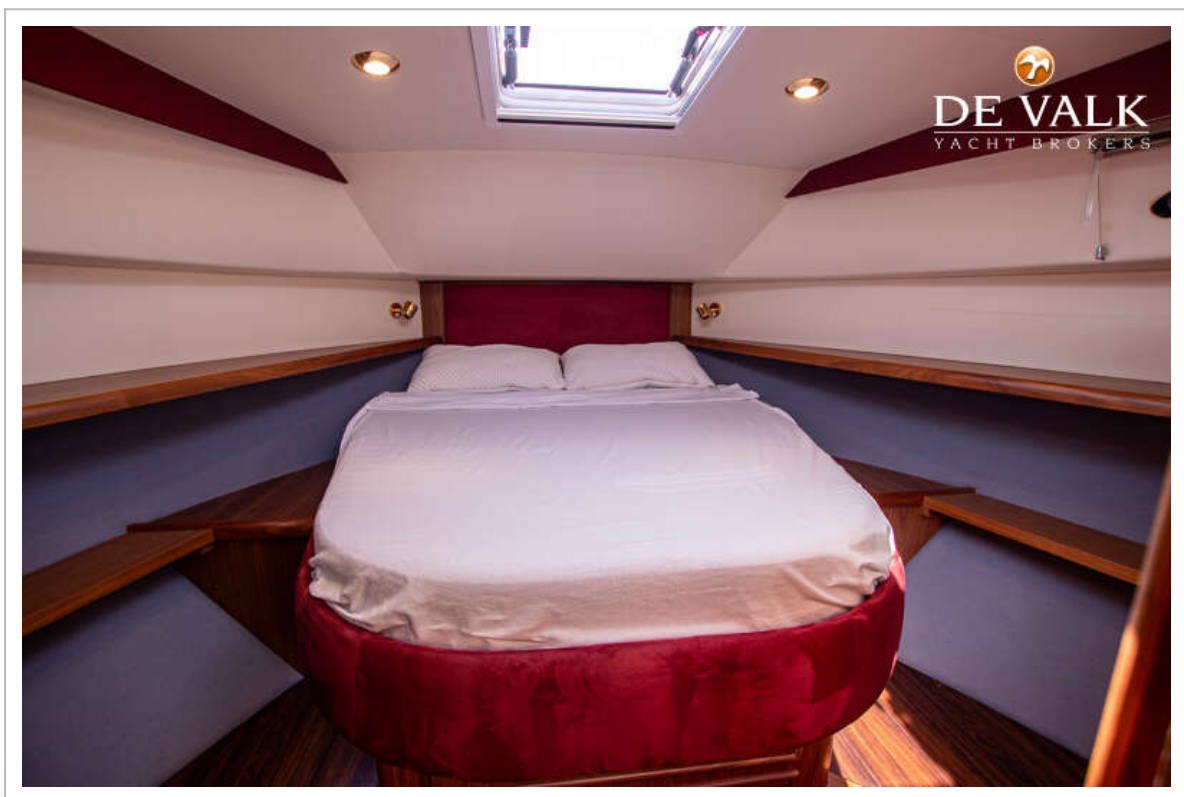
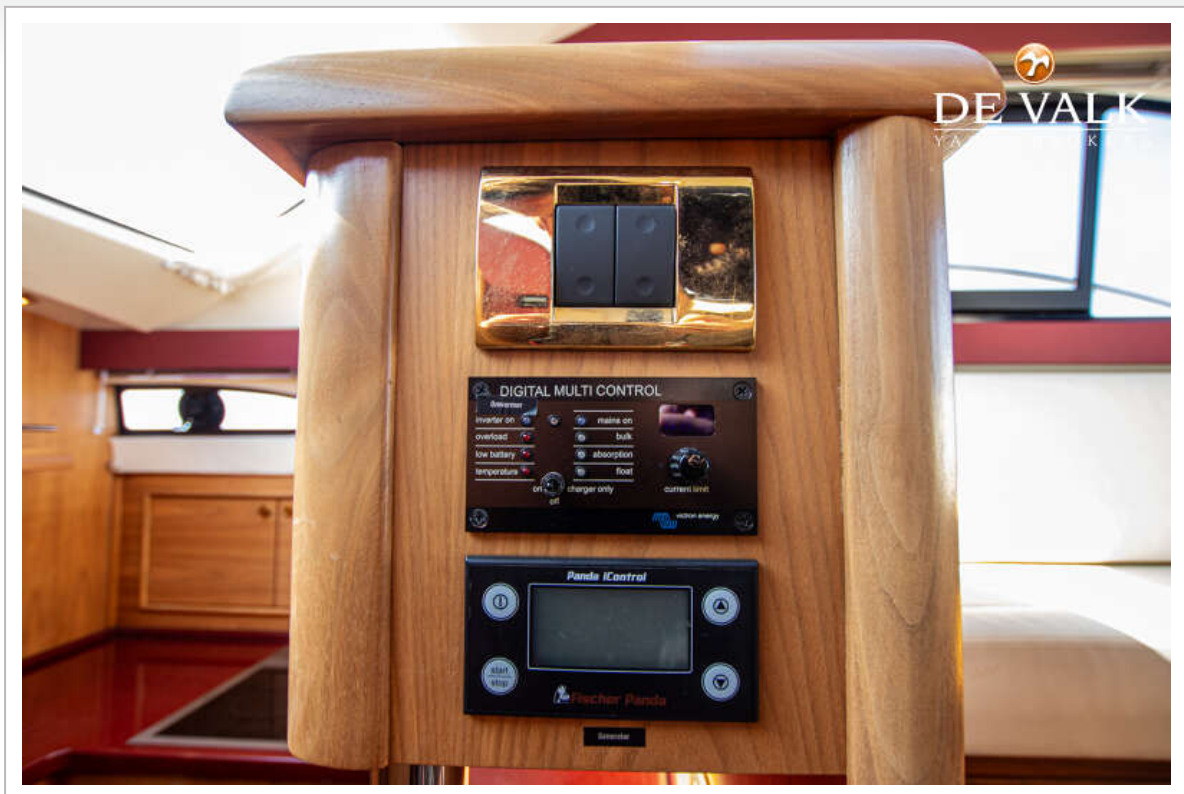
HAINES 32 SEDAN



HAINES 32 SEDAN



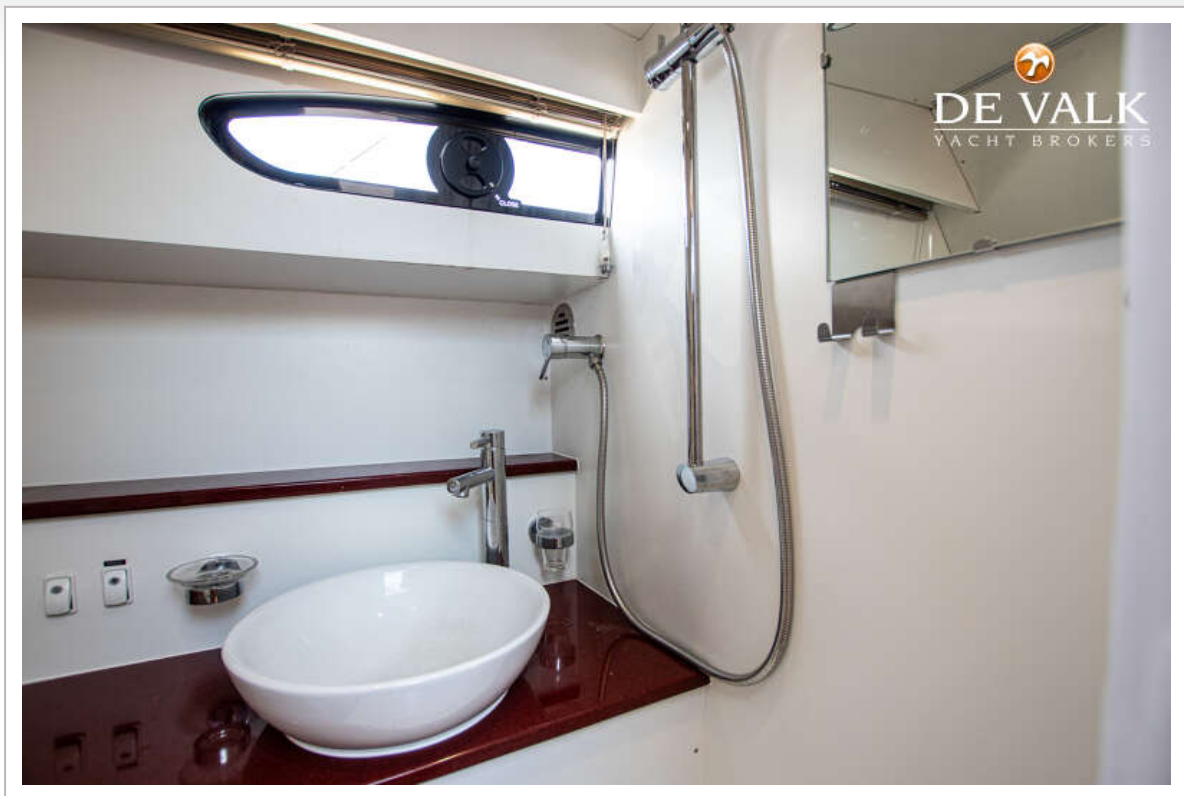
HAINES 32 SEDAN



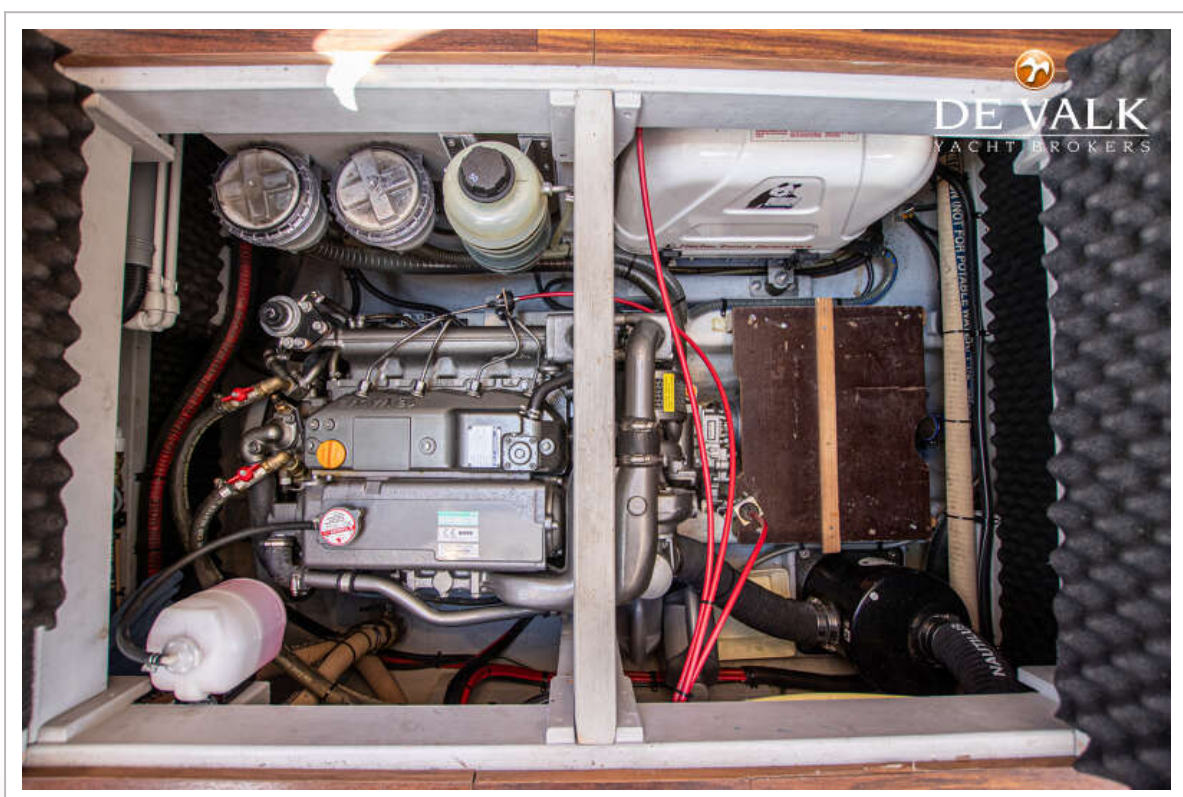
HAINES 32 SEDAN



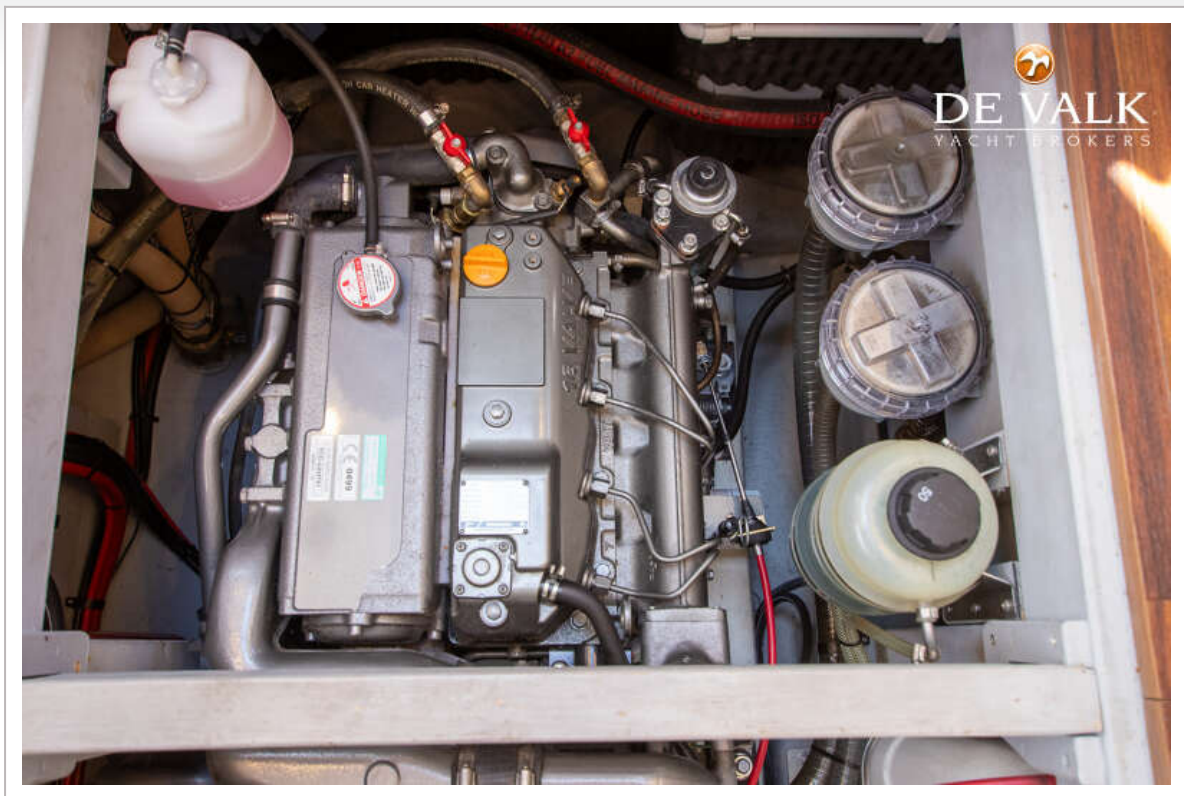
HAINES 32 SEDAN



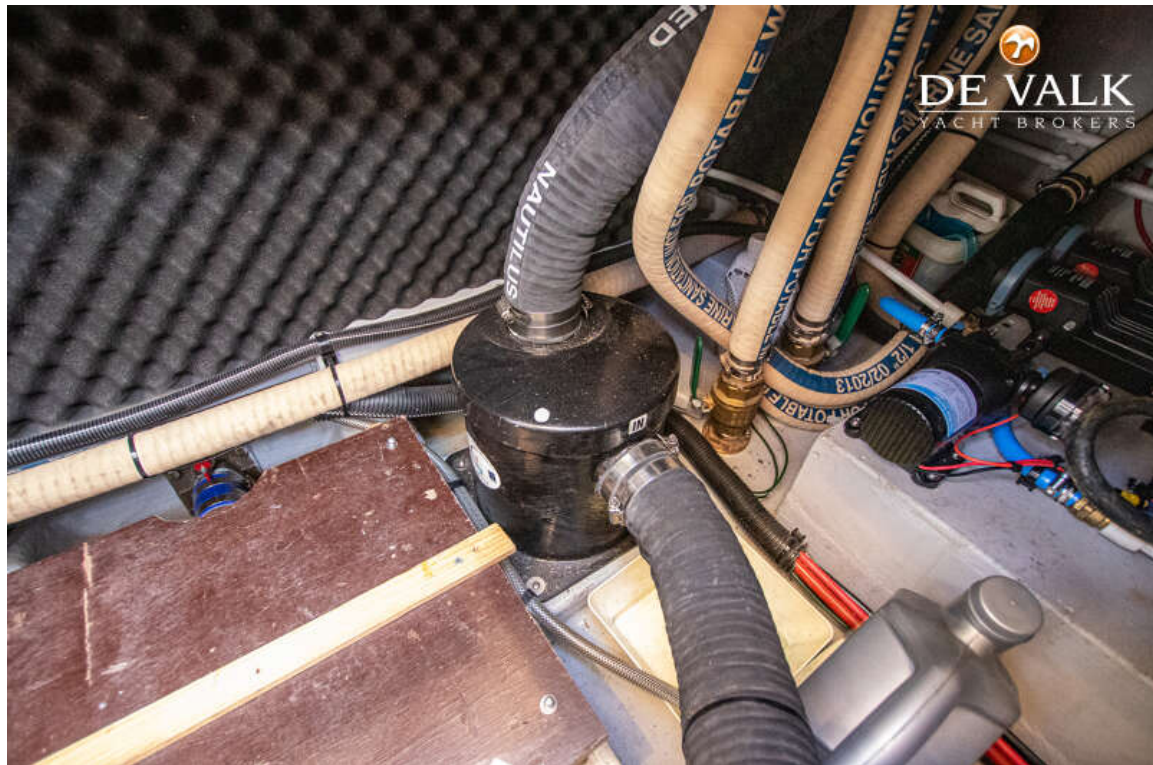
HAINES 32 SEDAN



HAINES 32 SEDAN



HAINES 32 SEDAN



HAINES 32 SEDAN

