



DE VALK  
YACHT BROKERS



HALLBERG RASSY 43 MK I



DE VALK  
YACHT BROKERS

BROKERAGE | CHARTER | BERTHS | FINANCE | INSURANCE | YACHT MANAGEMENT

# HALLBERG RASSY 43 MK I

## BROKER'S COMMENTS

This Hallberg Rassy 43 from 2003 is an outstanding example of the model, combining proven bluewater capability with timeless elegance. Meticulously maintained and superbly equipped, she is presented in excellent condition throughout. Known for her strength, comfort, and sailing performance, the Hallberg Rassy 43 is highly regarded among long-distance cruisers. This yacht is fully prepared and ready to set sail on an extended voyage, offering her next owner reliability, safety, and the confidence to explore oceans in style and comfort.

*Johan Schootstra*

## SPECIFICATIONS

<b>Dimensions</b>	13.57 x 4.08 x 2.00 (m)	<b>Builder</b>	Hallberg Rassy Varv AB
<b>Built</b>	2003	<b>Cabins</b>	2
<b>Material</b>	GRP	<b>Berths</b>	7
<b>Engine(s)</b>	1 x Volvo Penta D2-55 diesel	<b>Hp/Kw</b>	55.00 (hp), 40.48 (kw)
<b>Asking price</b>	€ 339.000 (VAT Paid)	<b>Lying</b>	at sales office

## CONTACT

<b>Sales office</b>	De Valk Hindeloopen B.V.	<b>Telephone</b>	+31 514 52 40 00
<b>Address</b>	Oosterstrand 1 8713 JS Hindeloopen NL	<b>E-mail</b>	hindeloopen@devalk.nl

## DISCLAIMER

These particulars are given in good faith as supplied but cannot be guaranteed.



# HALLBERG RASSY 43 MK I

## GENERAL

Model	HALLBERG RASSY 43 MK I
Type	sailing yacht
LOA (m)	13,57
LWL (m)	11,75
Beam (m)	4,08
Draft (m)	2,00
Air draft (m)	20,00
Year built	2003
Builder	Hallberg Rassy Varv AB
Country	Sweden
Designer	Germán Frers
Displacement (t)	12,7
Ballast (tonnes)	lead   4,5 t.
CE norm	A
Hull material	GRP
Hull colour	off-white
Hull shape	round-bilged
Keel type	fin keel with bulb
Superstructure material	GRP
Rubbing strake	yes
Deck material	GRP
Deck finish	teak
Superstructure deck finish	teak
Cockpit deck finish	teak
Antifouling (year)	New antifouling applied and anodes replaced in 2025
Dorades	5x
Window frame	aluminium
Window material	polycarbonate
Deckhatch	4x Lewmar
Fuel tank (litre)	stainless steel   395 ltr.



# HALLBERG RASSY 43 MK I

Level indicator (fuel tank)	yes
Freshwater tank (litre)	stainless steel   650 ltr.
Level indicator (freshwater)	yes
Blackwater tank (litre)	stainless steel   60 ltr.
Blackwater tank extraction	deck extraction + uw line
Wheel steering	rack & pinion
Emergency tiller	yes
More info on hull	Underwater hull dry-ice blasted and antifouling system rebuilt in 2019.
Extra info	Lewmar Ocean Low-profile hatches (renewed in 2010 with sun-protective hatches) and Lewmar portholes, all hatches and portholes fitted with renewed curtains 2024

## ACCOMMODATION

Cabins	2
Berths	7
Interior	mahogany
Layout	Comfortable saloon with L-shaped settee, two free-standing chairs, navigation station and galley. Forward is a spacious guest cabin with private bathroom. A generous owner's cabin aft comes with an ensuite bathroom.
Floor	teak and holly With carpet
Saloon	yes
Headroom saloon (m)	1,97 mtr.
Heating	diesel ducted hot air   Webasto Airtop 5000
Navigation center	yes
Chart table	yes
Aft Cabin	Owners cabin
Galley	yes
Countertop	Duropol
Sink	stainless steel   Double
Cooker	calor gas   Eno two burner
Oven	In cooker



# HALLBERG RASSY 43 MK I

Fridge	Isotherm top-loading refrigerator with water-cooled compressor.
Hot water system	220V/engine/heating   Webasto Isotemp 40L   new 2022   Autoterm new 2022
Water pressure system	electrical
Owners cabin	double bed + single bed   aft cabin
Bed length (m)	2 mtr.
Wardrobe	hanging/drawers/shelves
Bathroom	en suite
Toilet	Jabsco
Toilet system	electric
Wash basin	yes
Shower	yes
Guest cabin 1	v-bed
Bed length (m)	2 mtr.
Wardrobe	hanging and shelves
Bathroom	en suite
Toilet	Jabsco
Toilet system	manual
Wash basin	yes
Shower	yes
Washing machine	Candi wasmachine 4kg   new 2016
Extra info	Autoterm diesel heater for producing hot water without using the main engine or shore power.

## MACHINERY

No of engines	1
Make	Volvo Penta
Type	D2-55
HP	55
kW	40.48
Fuel	diesel
Maximum speed (kn)	7,5



# HALLBERG RASSY 43 MK I

<b>Cruising speed (kn)</b>	6,5
<b>Engine cooling system</b>	freshwater heat exchanger
<b>Drive</b>	shaft
<b>Shaft seal</b>	Propeller shaft bearings and seals replaced in 2016.
<b>Engine controls</b>	bowden cable
<b>Gearbox</b>	mechanical
<b>Bowthruster</b>	electric   Sidepower 8 hp
<b>Exhaust</b>	watercooled
<b>Propeller type</b>	Max Prop Easy 90   new 2016
<b>Propeller blades</b>	3
<b>Propeller shaft material</b>	stainless steel   Ø 35mm
<b>Shaft lubrication</b>	water
<b>Manual bilge pump</b>	yes
<b>Electric bilge pump</b>	yes
<b>Bilge alarm</b>	yes
<b>Electrical installation</b>	12 / 220 volt
<b>Service battery</b>	4 x 125 Ah lithium batteries   2017
<b>Bowthruster battery</b>	With separate Mastervolt 60A shore power charger and 2 x 12V Optima Redtop RTS 4.2 traction batteries.
<b>Battery monitor</b>	Mass Inverter Charger Control
<b>Battery charger/inverter</b>	Mastervolt Mass Combi 12/2200-100   2016
<b>Shorepower</b>	with cable
<b>Extra info</b>	Mastervolt alternator 12/130 incl. Alpha Pro II charge regulator   2016

## NAVIGATION

<b>Compass</b>	yes
<b>Multi control display</b>	Raymarine 3 x ST 70 en E-90   2017
<b>VHF</b>	Raymarine Ray 240E DSC Class D with 2nd horn and active speaker at helm   2017
<b>Autopilot</b>	Raymarine P-70 with EV-100 gyro compass - 2017   Whitlock / Lewmar autopilot drive



# HALLBERG RASSY 43 MK I

<b>Radar</b>	Raymarine RD418HD Color   new 2021
<b>Radar/GPS/plotter</b>	Raymarine Axiom plotter HybridTouch 9" - 2024   Raymarine Axiom plotter Multi 7" - 2024   Raymarine RMK-10 control at helm - 2017
<b>Navtex</b>	Furuno NX-300
<b>AIS receiver</b>	Garmin, with separate antenna on pushpit
<b>Extra info</b>	R&R DSC-Pacific combination antenna (VHF-GSM-TV-SSB-AM/FM radio)
<b>Extra info</b>	Raymarine RS150 GPS antenna

## EQUIPMENT

<b>Fixed windscreen</b>	Sunscreens over fixed windows sprayhood   2024
<b>Sprayhood</b>	2016
<b>Cockpit cover</b>	2016
<b>Sun awning</b>	Cockpit sun awning
<b>Winter cover</b>	2016
<b>Bathing platform</b>	yes
<b>Boarding ladder</b>	yes
<b>Deck shower</b>	Hot and cold water
<b>Anchor</b>	Delta   25kg
<b>Anchor chain</b>	70 mtr.   8 mm
<b>Windlass</b>	electrical   lewmar
<b>Capstan</b>	yes
<b>Deck wash</b>	yes
<b>Outboard support</b>	yes
<b>Davits</b>	stainless steel
<b>Davits controls</b>	manual
<b>Sea railing</b>	yes
<b>Grab rail (superstructure)</b>	teak
<b>Pushpit</b>	yes
<b>Pulpit</b>	yes
<b>Radar reflector</b>	yes



Fenders	yes
Mooring lines	yes

## RIGGING

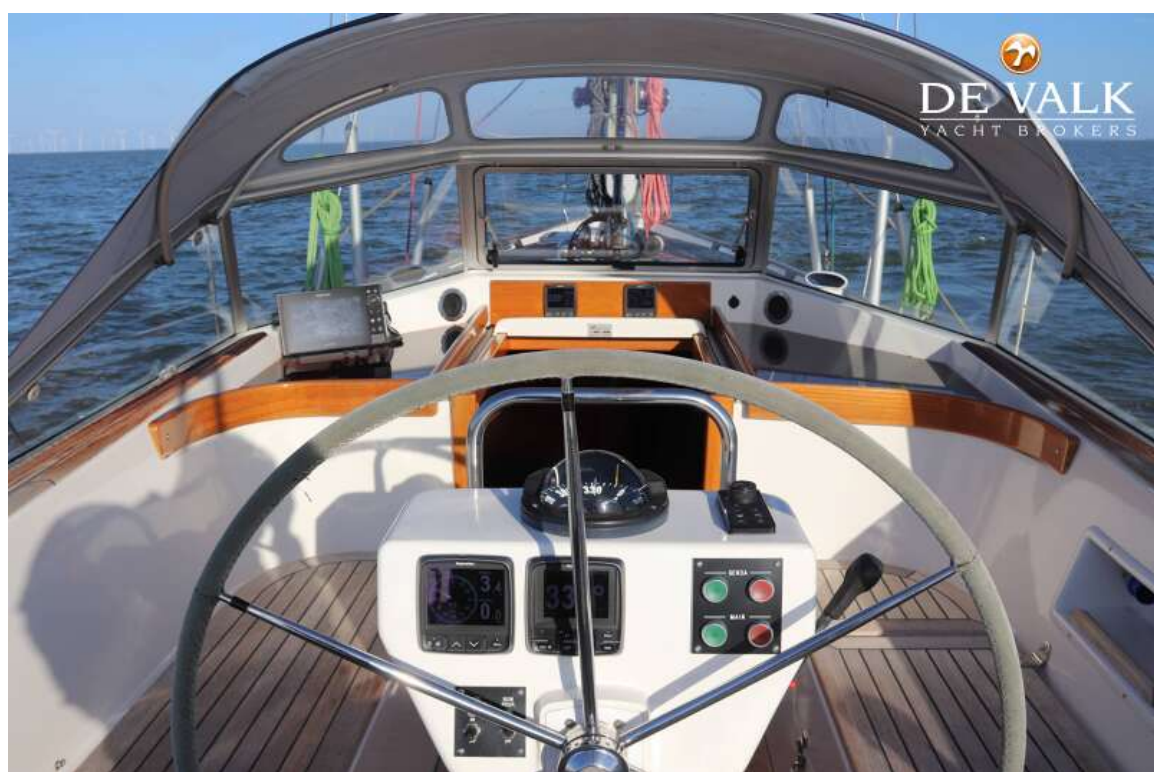
Rigging	sloop-cutter
Standing rigging	wire   new 2021
Brand mast	Seldén
Material mast	aluminium
Spreaders	2 pair
Mainsail	Elvstrøm EPEX Vectron/Technora sail, new in 2016 and professionally serviced in 2025.
Fully battened mainsail	yes
Stoway mast	hydraulic Seldén furling mainsail system
Cutterstay	removable
Jib	Cutter jib   UK de Vries Sails   new 2021
Genoa	1x Elvstrøm Hydranet 380 (Crosscut by Dimension Polyant) furling genoa with new (2021) UV strip and 1x Elvstrøm Offshore furling genoa 136%   2013
Genoa furler	hydraulic Seldén Furlex furling genoa system
Gennaker	North Sails Gennaker G2 – 2012 (in Mailite 150 and ORC measured) with Stripper – 2019
Reefing System	main in-mast furling
Backstay adjuster	hydraulic   Navtec
Boomvang	gasspring
Primary sheet winch	2 x 40 CEST mainsheet winch, 1 electric
Genoa sheetwinches	2 x 50 CEST electric genoa sheet winch
Halyard winches	2x Lewmar 40 on mast
Spi-pole	carbon   new 2016
Gennaker pole	stainless steel
Extra info	In 2021 all mast lighting was replaced by Aqua Signal LED fixtures
Extra info	In 2021 a removable cutter stay was installed with reinforcement on the bulkhead and running backstays







# HALLBERG RASSY 43 MK I

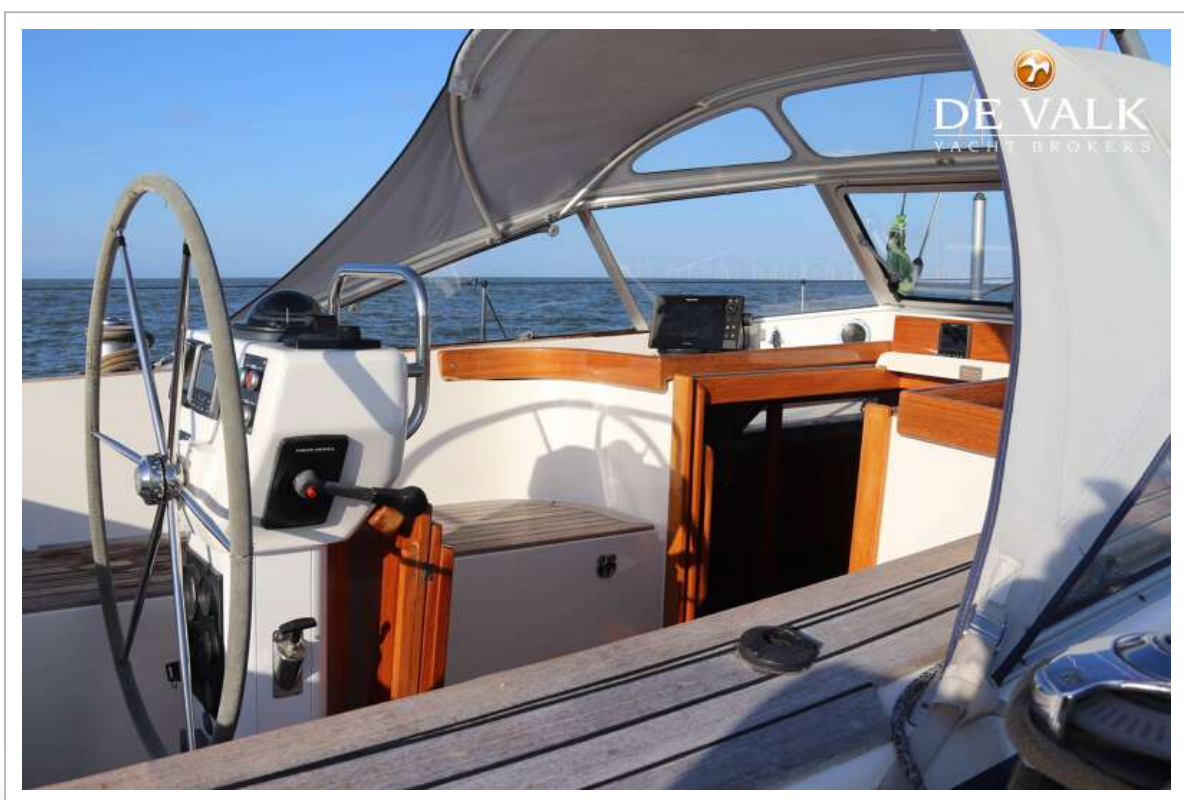


# HALLBERG RASSY 43 MK I





# HALLBERG RASSY 43 MK I

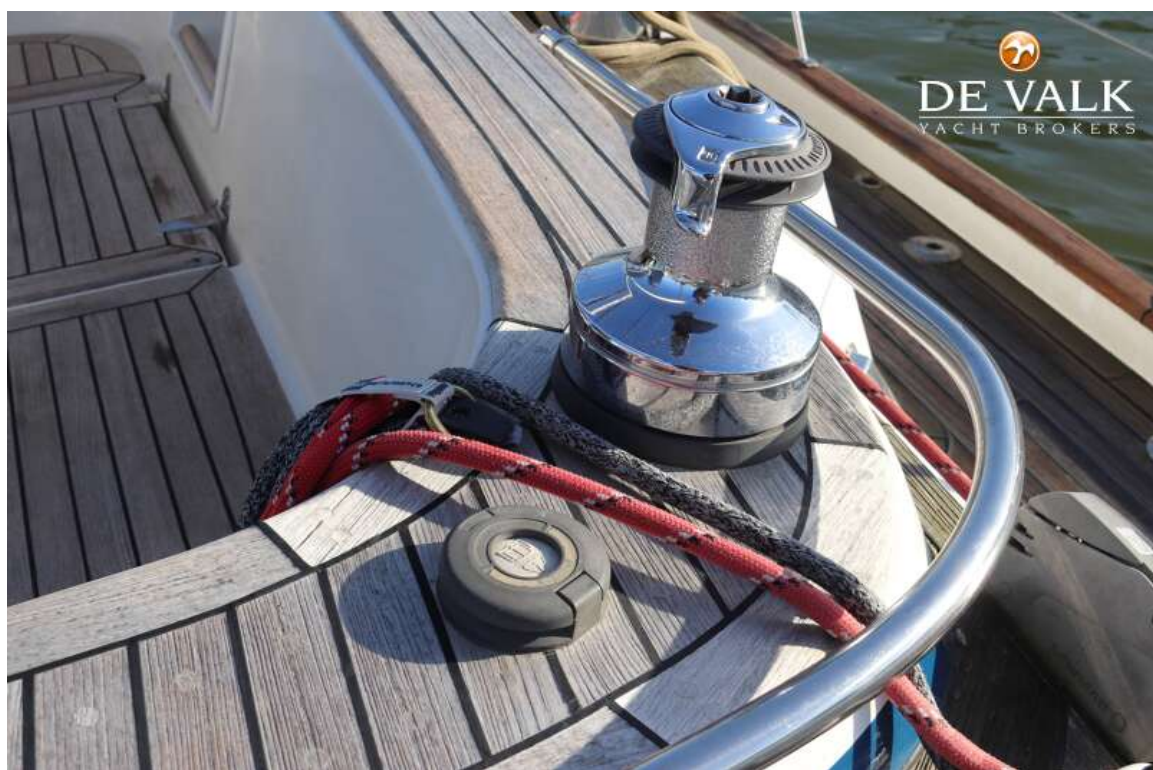


# HALLBERG RASSY 43 MK I

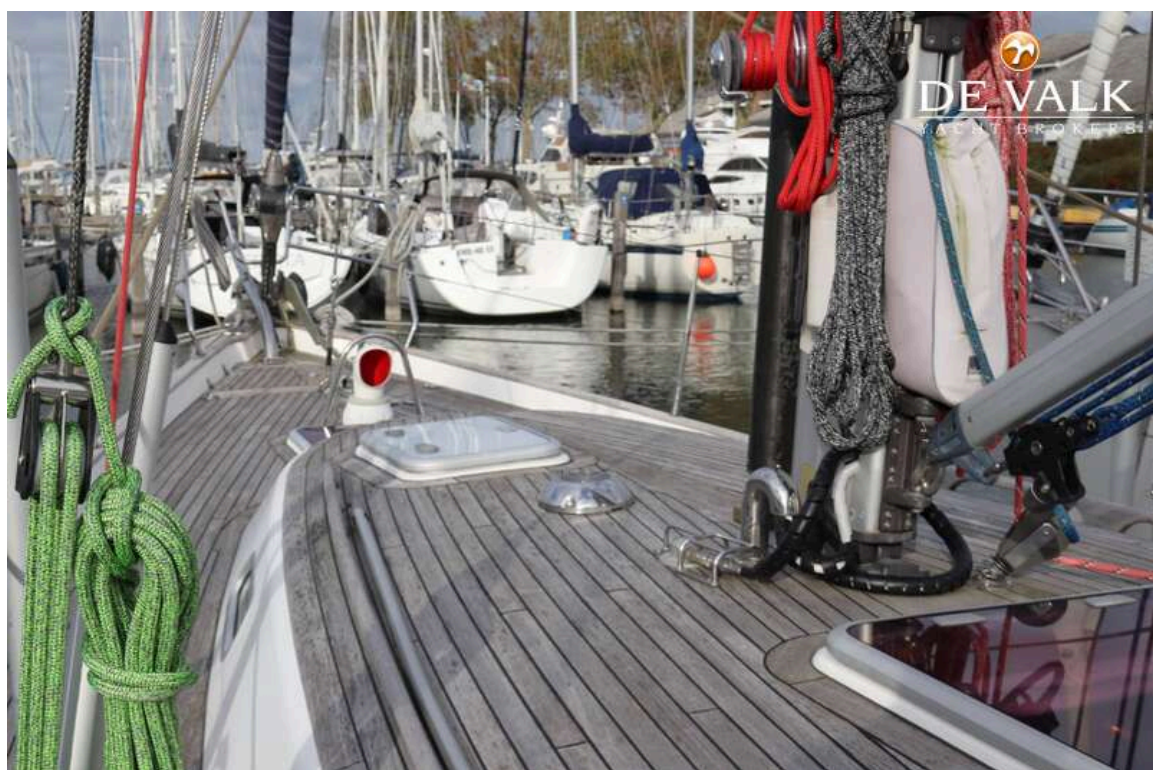




# HALLBERG RASSY 43 MK I

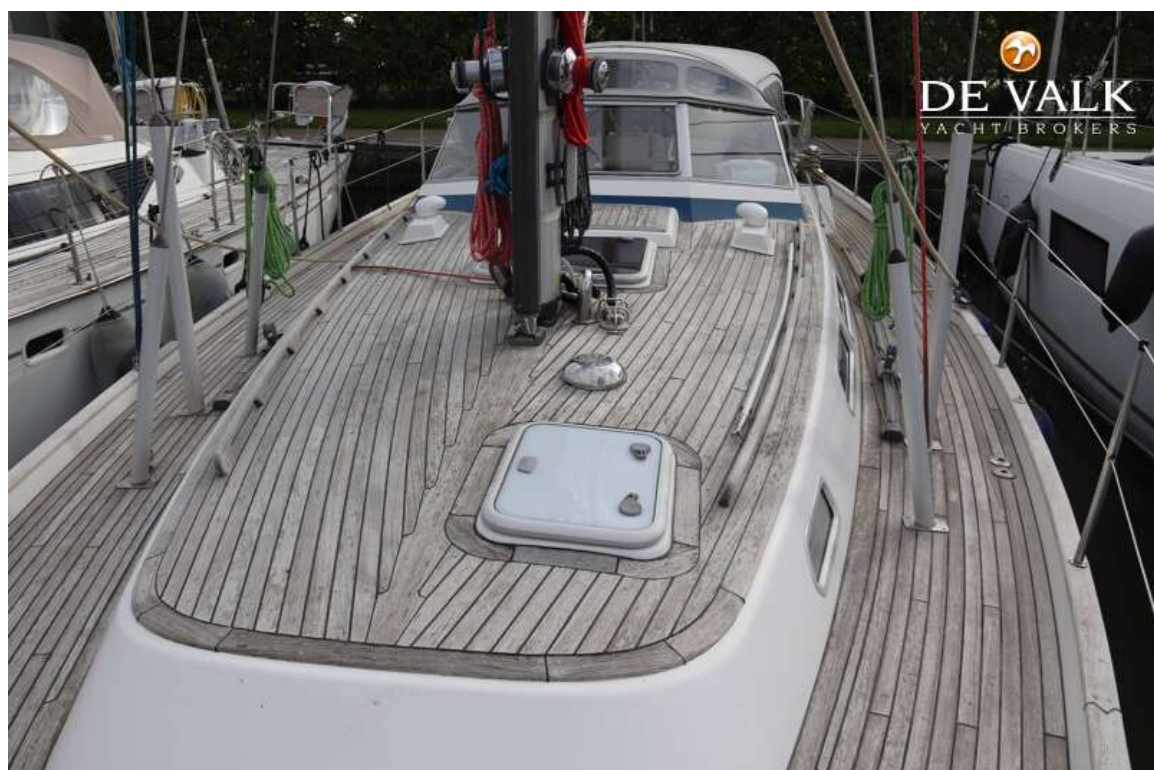


# HALLBERG RASSY 43 MK I



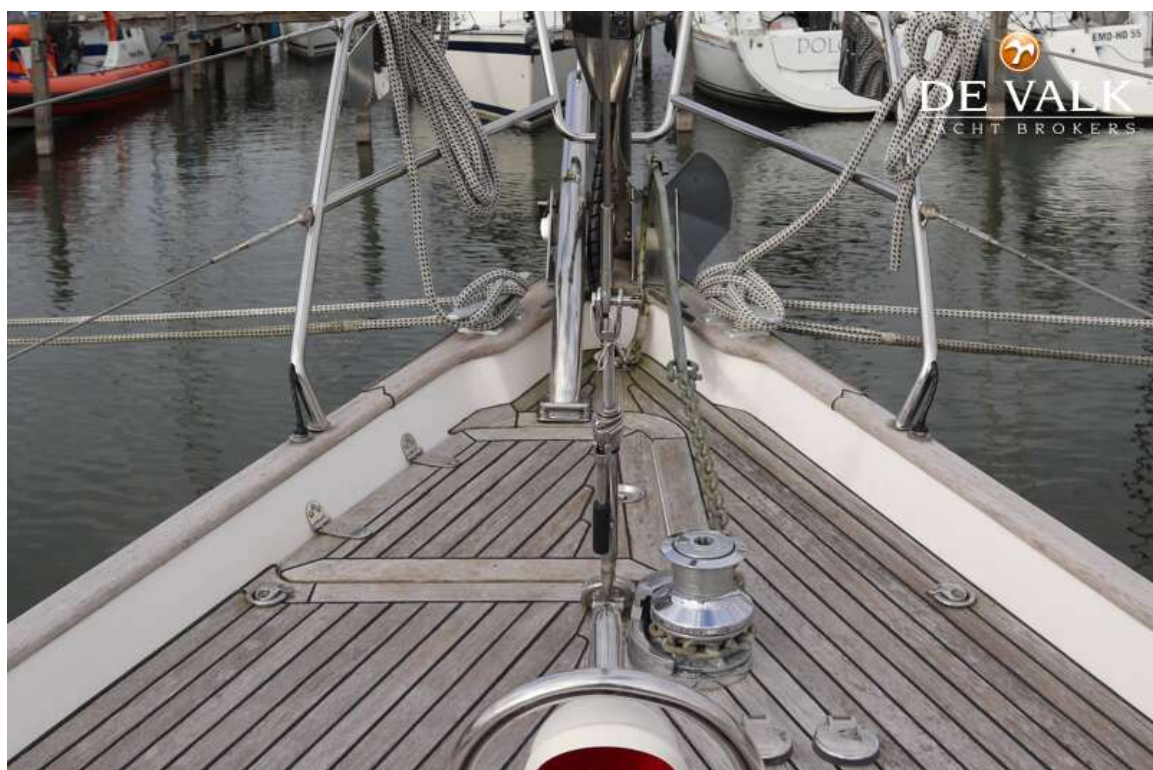


# HALLBERG RASSY 43 MK I





# HALLBERG RASSY 43 MK I



# HALLBERG RASSY 43 MK I





# HALLBERG RASSY 43 MK I

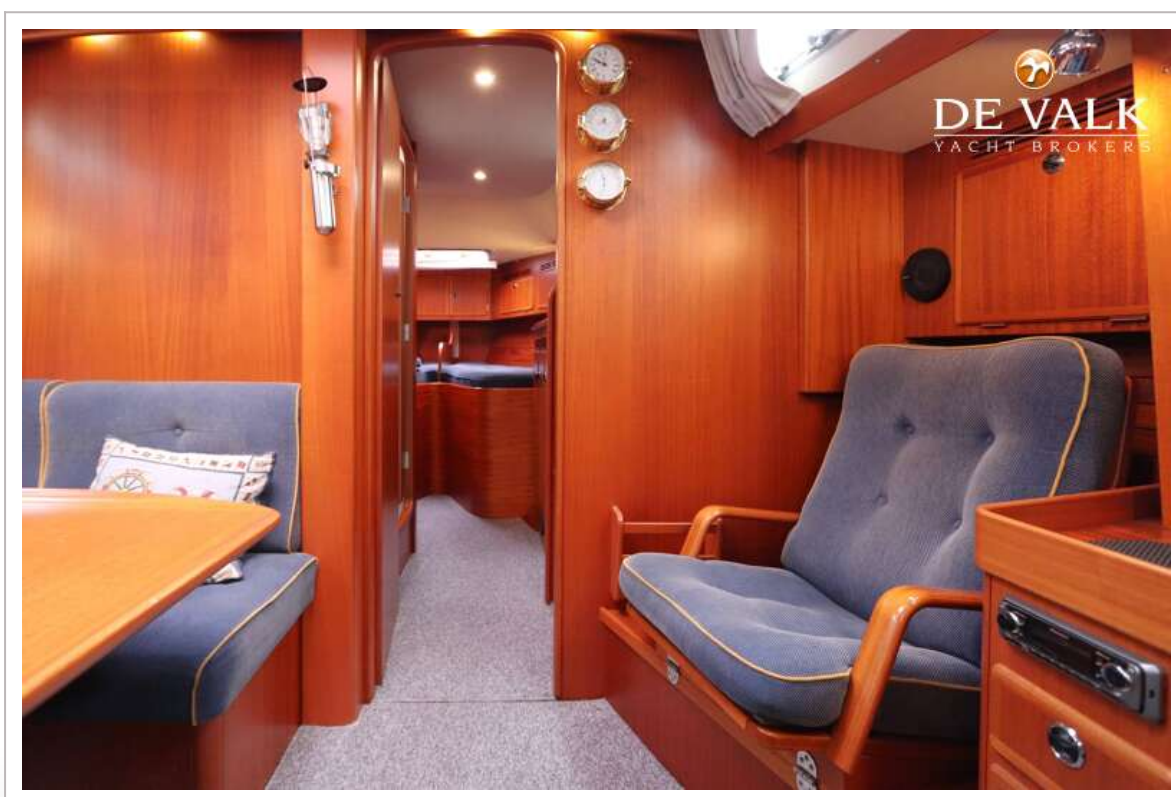


# HALLBERG RASSY 43 MK I

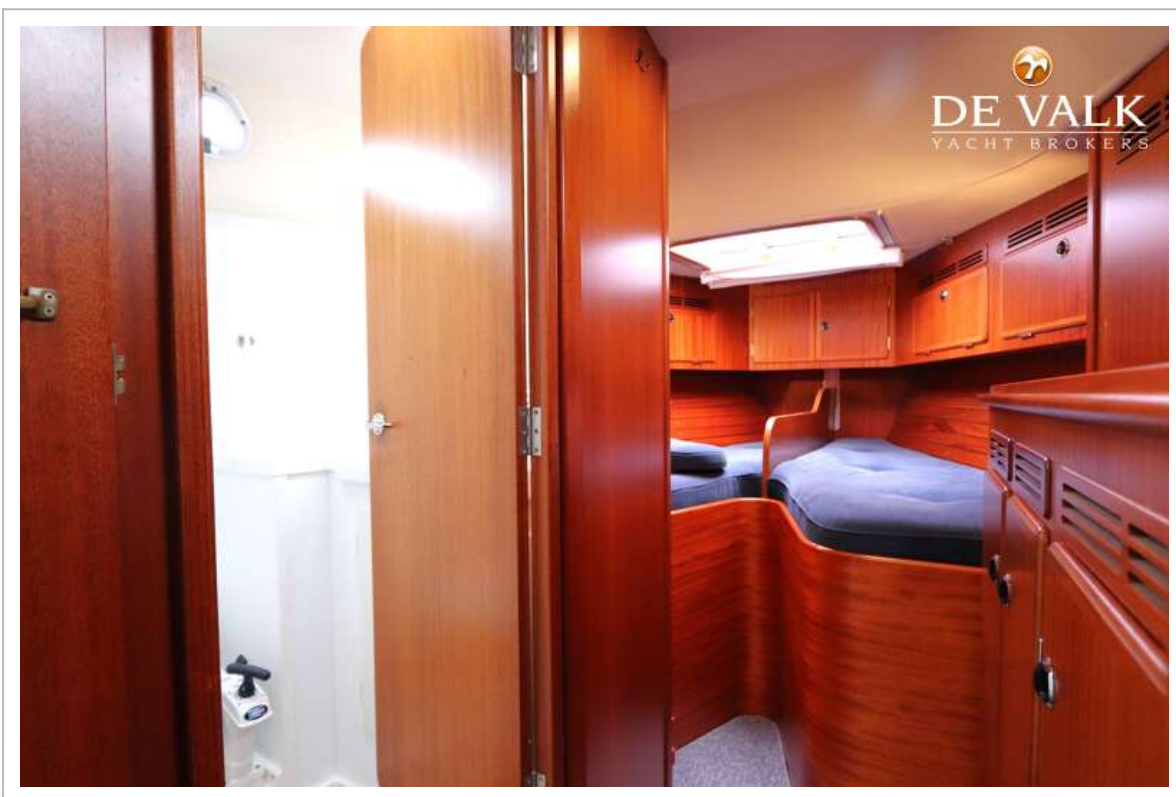




# HALLBERG RASSY 43 MK I



# HALLBERG RASSY 43 MK I

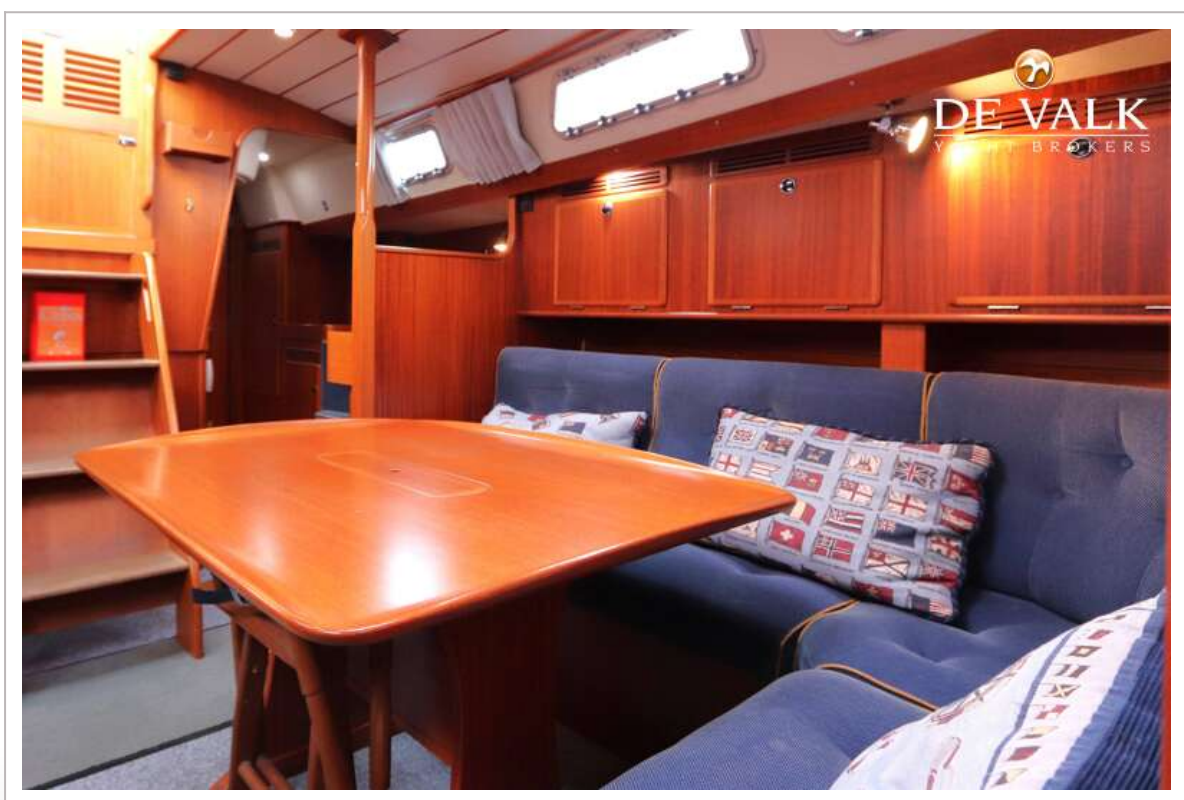




# HALLBERG RASSY 43 MK I

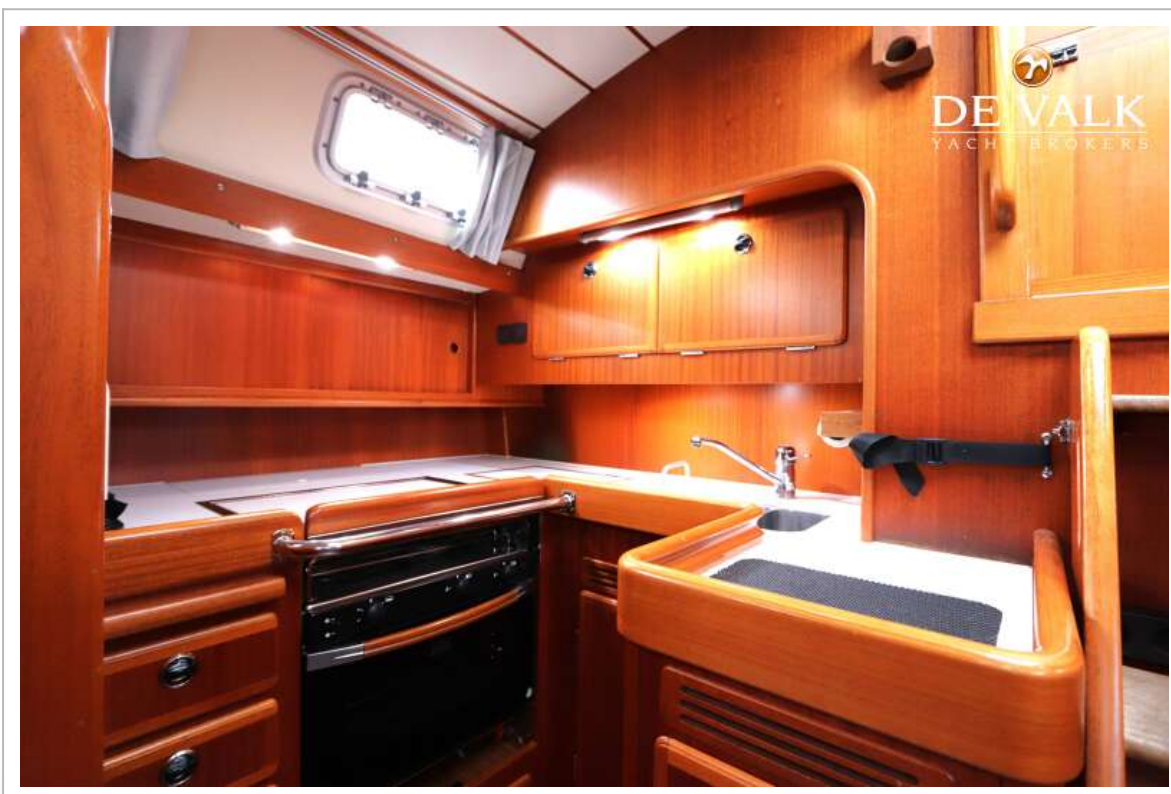


# HALLBERG RASSY 43 MK I





# HALLBERG RASSY 43 MK I

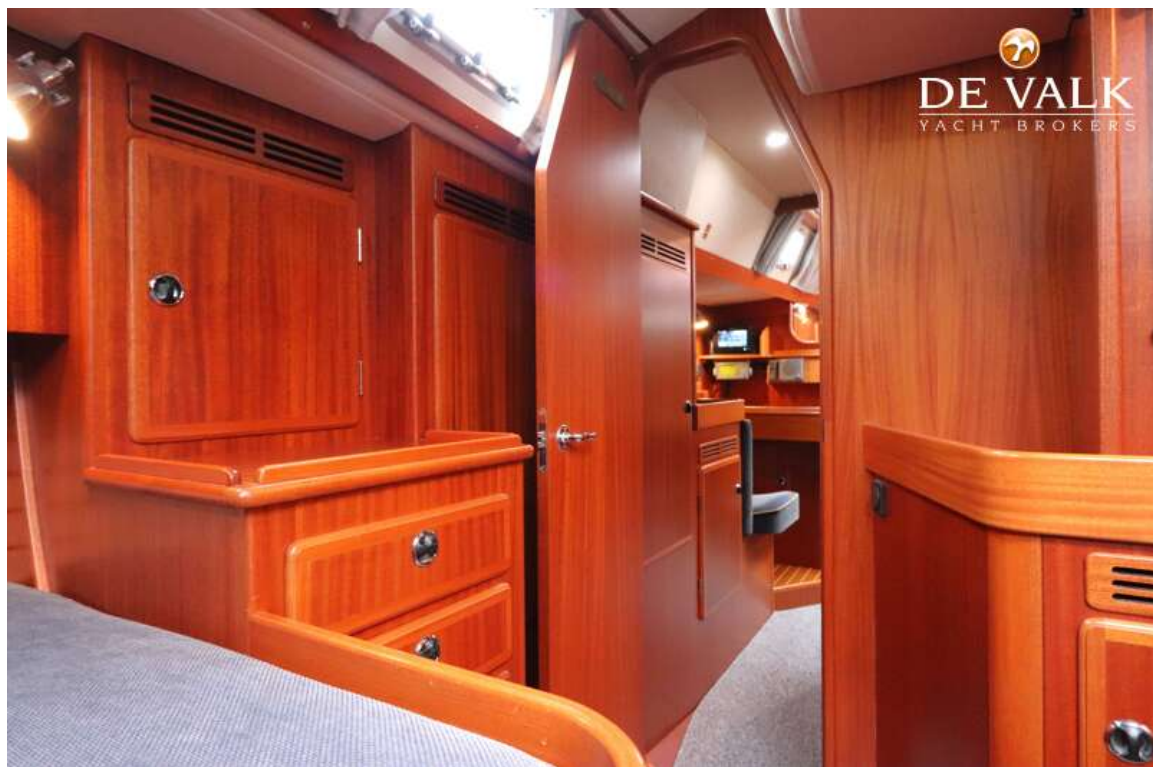


# HALLBERG RASSY 43 MK I

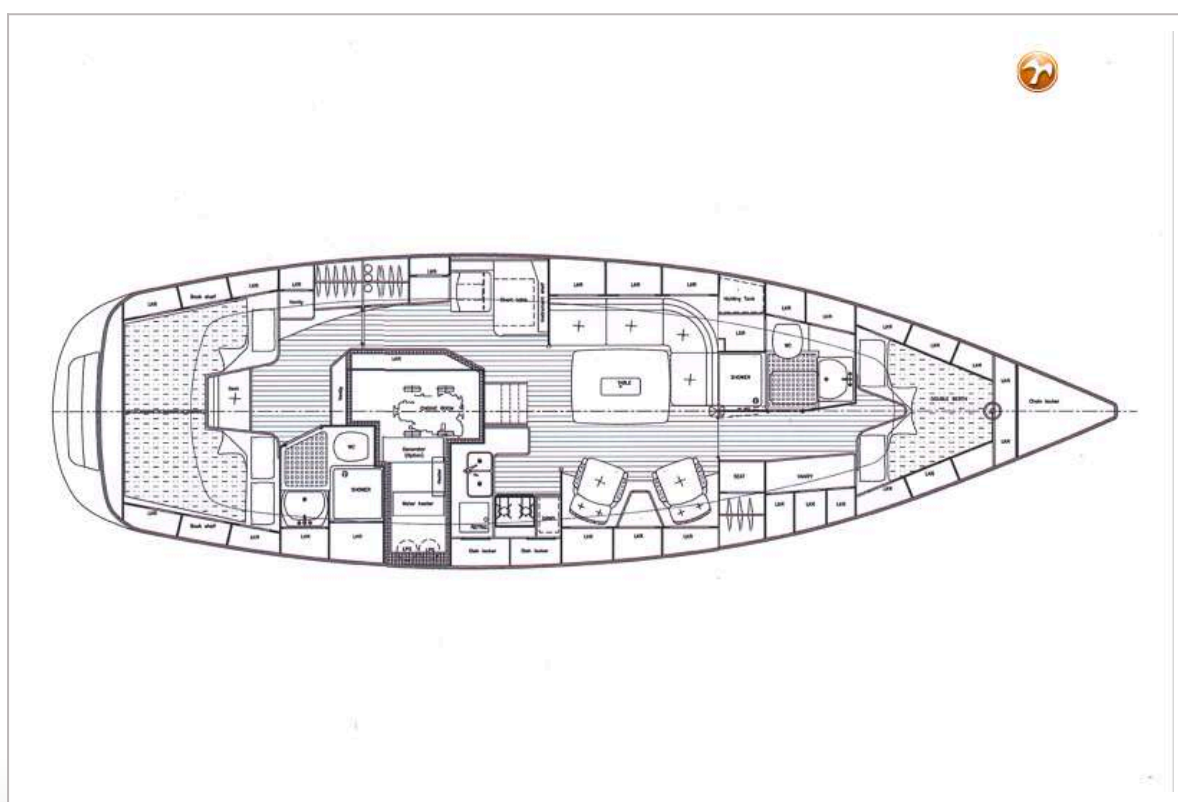
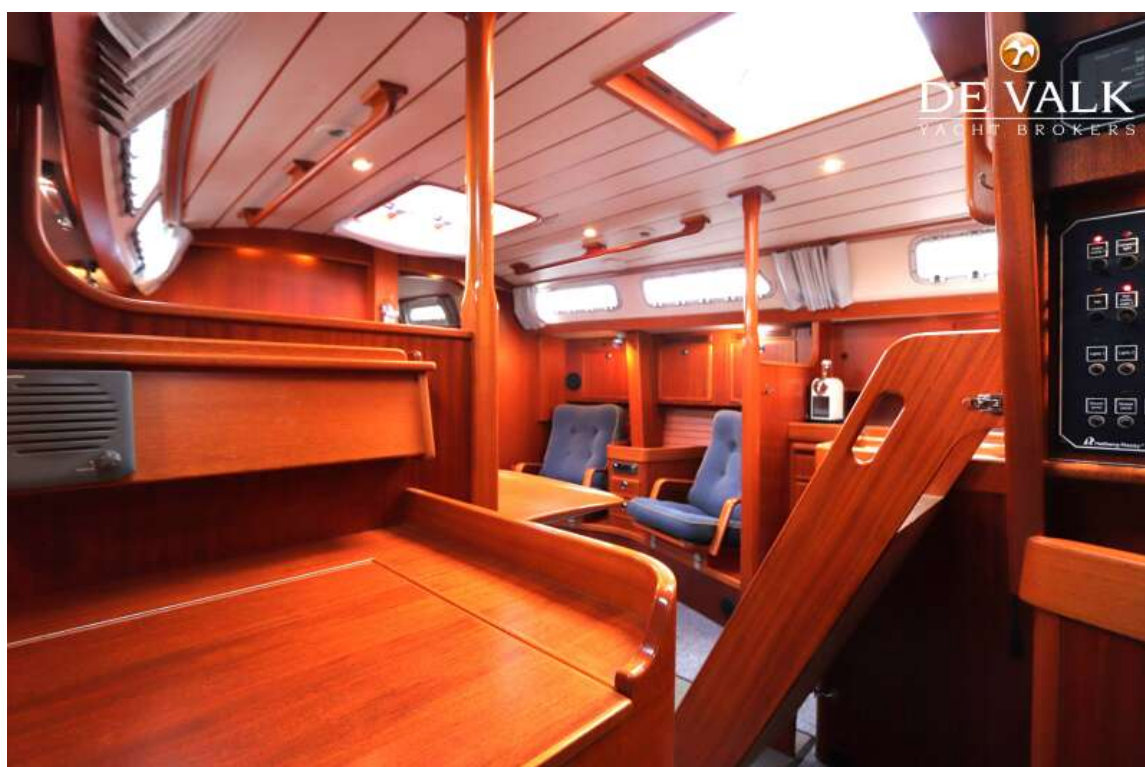




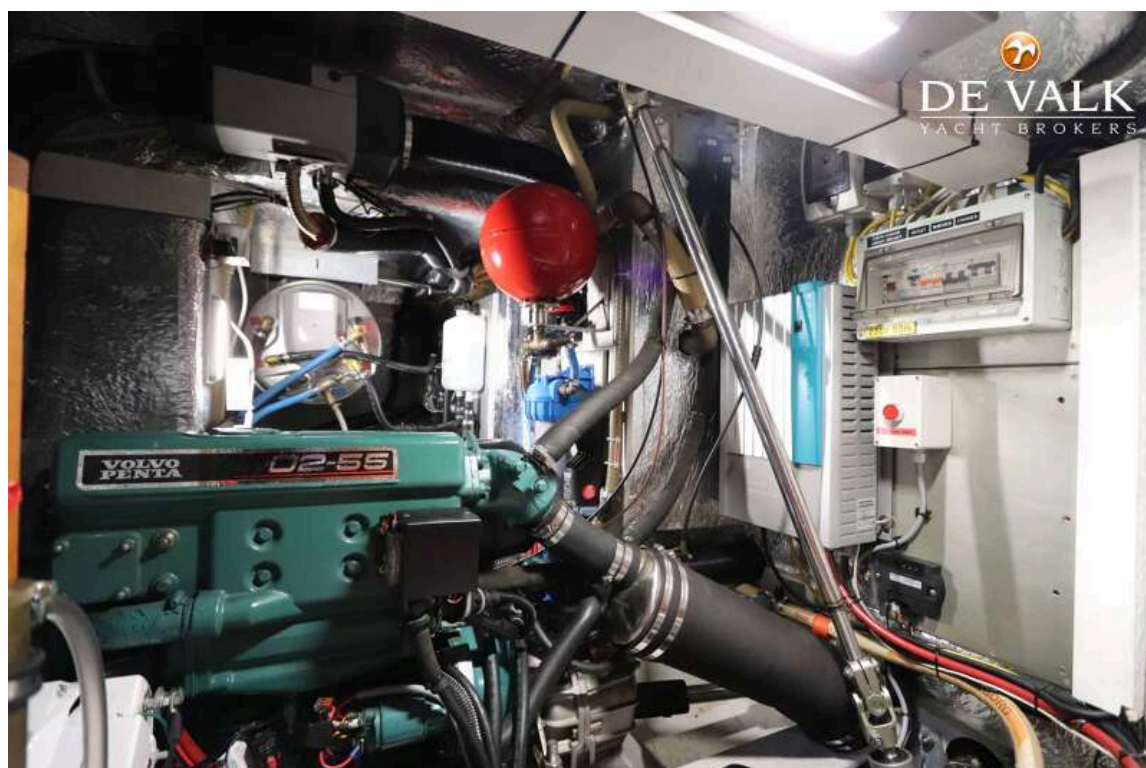
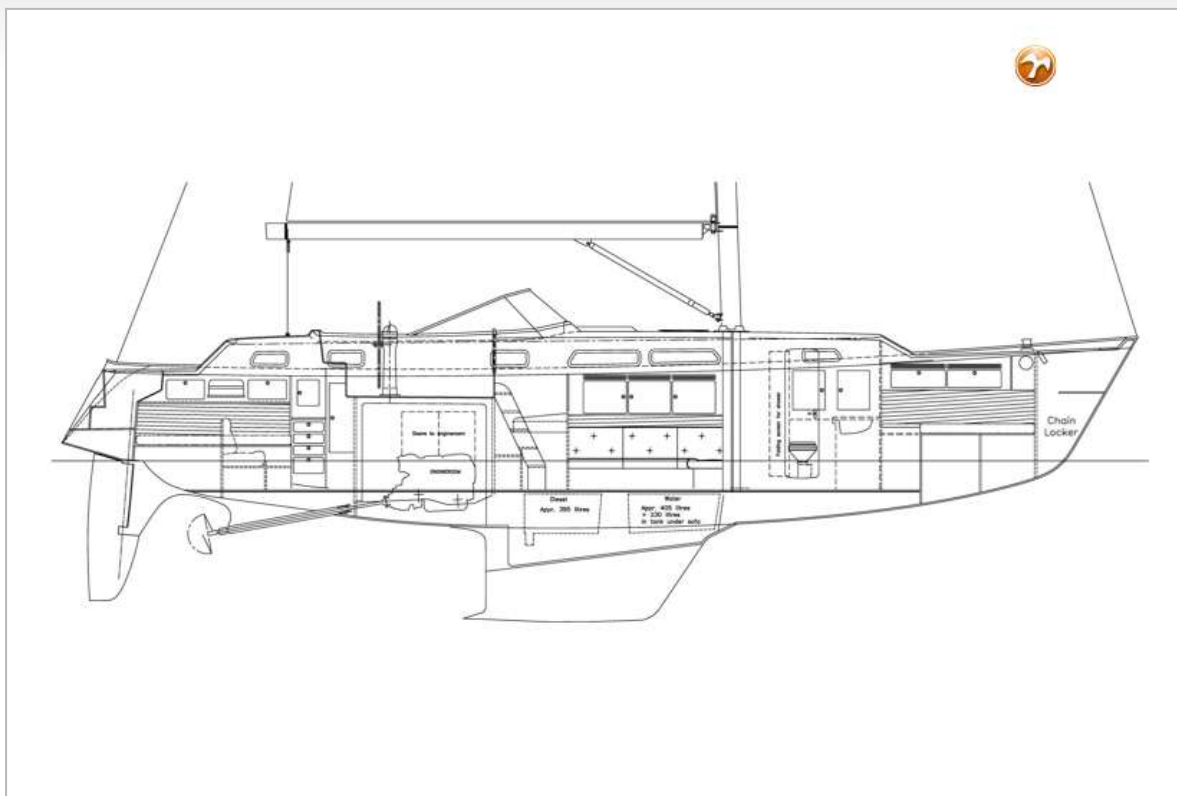
# HALLBERG RASSY 43 MK I



# HALLBERG RASSY 43 MK I



# HALLBERG RASSY 43 MK I





# HALLBERG RASSY 43 MK I

