



DE VALK
YACHT BROKERS



SEALINE T50



DE VALK
YACHT BROKERS

BROKERAGE | CHARTER | BERTHS | FINANCE | INSURANCE | YACHT MANAGEMENT

SEALINE T50

BROKER'S COMMENTS

This 2006 Sealine T50 offers an exceptional blend of style, comfort, and performance. Powered by twin diesel engines, she delivers a smooth and confident ride, ideal for coastal cruising or extended passages. The spacious flybridge and aft deck provide excellent entertaining space, while the light-filled saloon, fully equipped galley, and three well-appointed cabins offer luxurious accommodation for family and guests. Meticulously maintained and presented in excellent condition, this T50 is ready to be enjoyed immediately by her next discerning owner.

Sofia Iliia-Salvanou

SPECIFICATIONS

Dimensions	15.34 x 0.00 x 0.00 (m)	Builder	
Built	2006	Cabins	
Material	GRP	Berths	
Engine(s)	2 x Cummins QSC 8.3 diesel	Hp/Kw	2 x 1,080.00 (hp), 794.88 (kw)
Asking price	€ 330.000 (VAT Not paid)	Lying	at sales office

CONTACT

Sales office	De Valk Corfu	Telephone	(+30) 266 111 8095
Address	New Port of Corfu, near Gouvia Marina 490 83 Corfu GR	E-mail	corfu@devalk.nl

DISCLAIMER

These particulars are given in good faith as supplied but cannot be guaranteed.



SEALINE T50

GENERAL

Model	SEALINE T50
Type	motor yacht
LOA (m)	15,34
Year built	2006
Hull material	GRP
Cockpit deck finish	teak Self-draining, non- slip
Radar arch	Forward-facing with lights
Wheel steering	hydraulic
Flybridge helm position	Central

ACCOMMODATION

Aft deck	90cm extendable and moveable
Air-conditioning	230V + shore support system
Sliding door to aft deck	3 part - curved - stainless steel
Sink	+ mixer tap, recessed
Oven	Combined with grill
Extractor	yes
Microwave	yes
Fridge	yes
Freezer	yes
Dishwasher	Built-in
Ice maker	On flybridge
Owners cabin	double bed
Wardrobe	yes
Bathroom	en suite
Toilet system	vacuum NEW silent
Guest cabin 1	double bed
Wardrobe	yes
Bathroom	separate
Toilet system	vacuum NEW silent



SEALINE T50

Guest cabin 2	bunk bed
Wardrobe	yes
Bathroom	separate
Wet bar	With cool box, sink and waste bin
Extra info	NEW Italian latex ultra-comfort mattress in all cabins
Extra info	NEW carpets throughout

MACHINERY

No of engines	2
Make	Cummins
Type	QSC 8.3
HP	1080
kW	794.88
Fuel	diesel
Drive	shaft
Bowthruster	yes
Manual bilge pump	yes
Electric bilge pump	yes
Generator	Koehler
Batteries	yes
Battery charger	yes
Solar panel	Victron regulator + inverter
Watermaker	Idromar
Trimtabs	+ Lenco controls
Extra info	Engine diagnostics indicator
Extra info	Engine room fans

NAVIGATION

Compass	yes
Compass on flybridge	yes
VHF	X2 Raymarine



Autopilot	yes
GPS	Raymarine
Camera	Interior + exterior
Navigation lights	Full set + underwater lights
Searchlight	Remote control at both stations

EQUIPMENT

Fixed windscreen	Curved, tinted with stainless steel trim
Cockpit cover	Full set
Bimini	yes
Bathing platform	Teak laid with built-in storage locker
Boarding ladder	stainless steel
Transom door	Port
Deck shower	Hot + cold water
Anchor	+ electric windlass + deck and helm controls
Anchor chain	yes
Dinghy	Williams Jet 285
Grab rail (superstructure)	stainless steel
Life raft	yes
Wiper	X2 + screen wash
Horn	air pressure
TV	X1 in saloon + x2 in cabins
Surround Sound System	yes
Cockpit speakers	yes
Speakers in salon	yes
Speakers in cabin	yes
Extra info	Self-draining anchor locker with fender storage



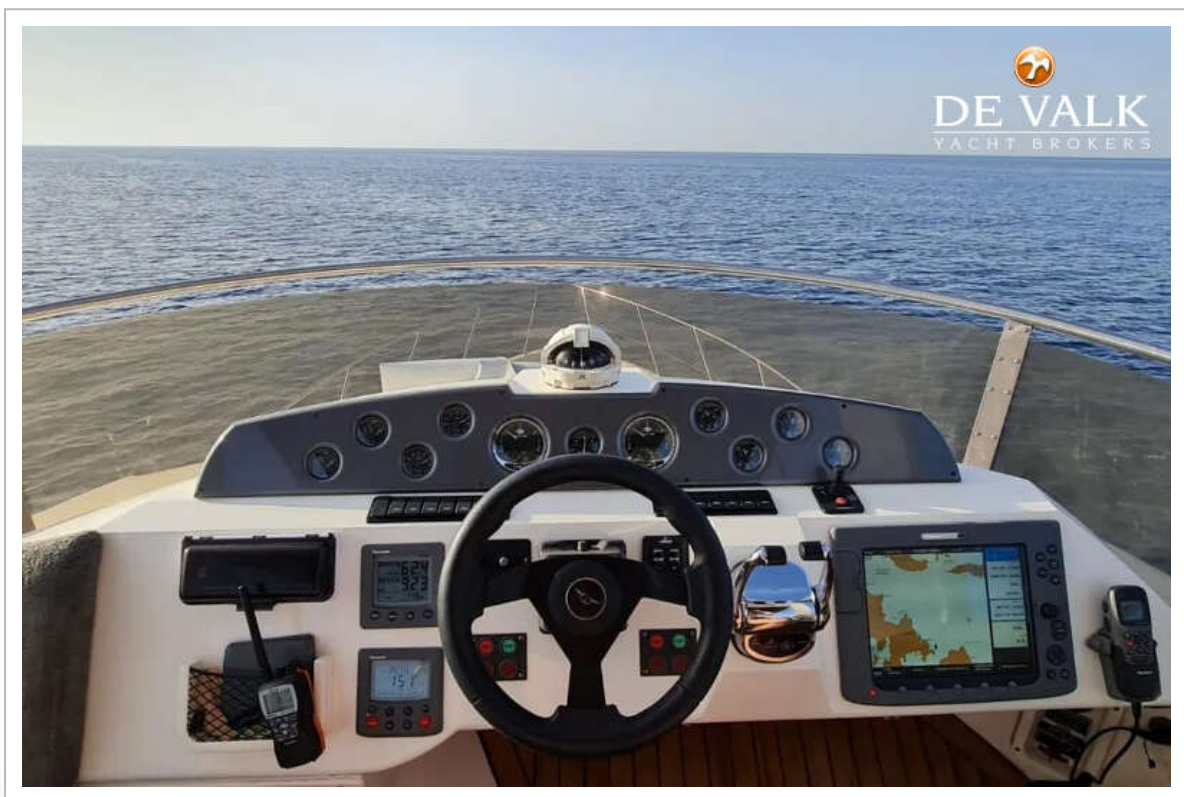
SEALINE T50



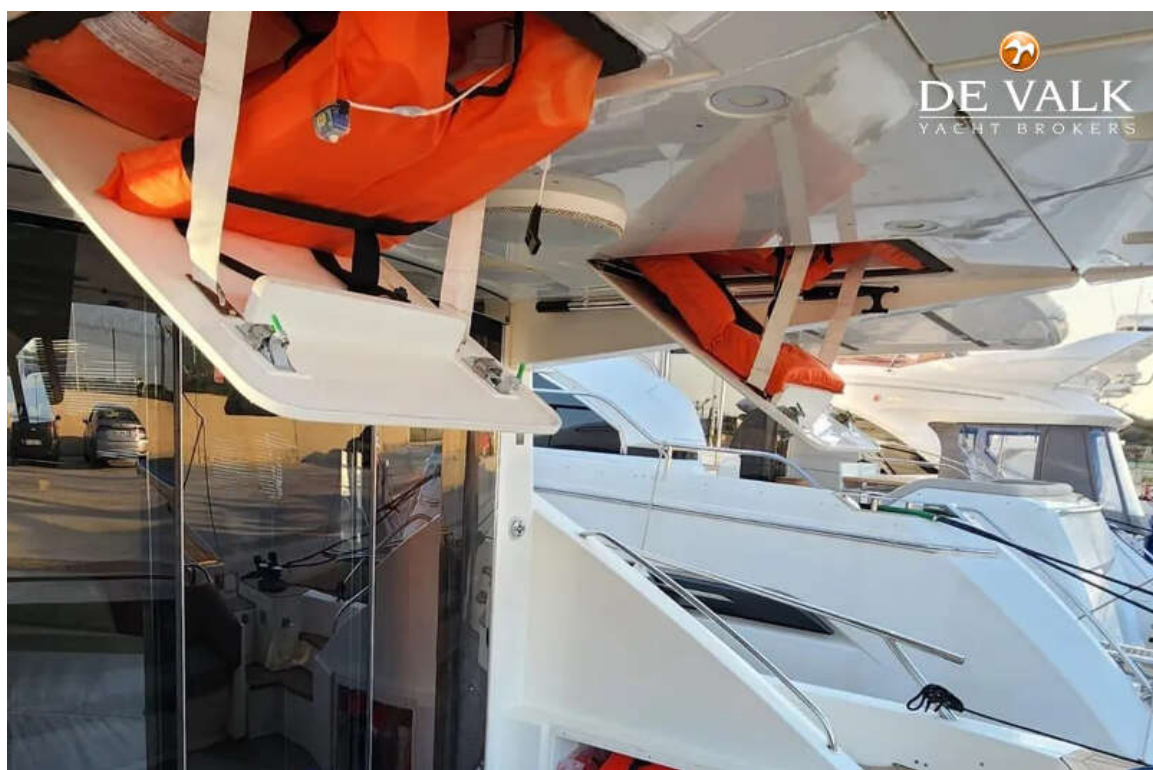
SEALINE T50



SEALINE T50



SEALINE T50



SEALINE T50



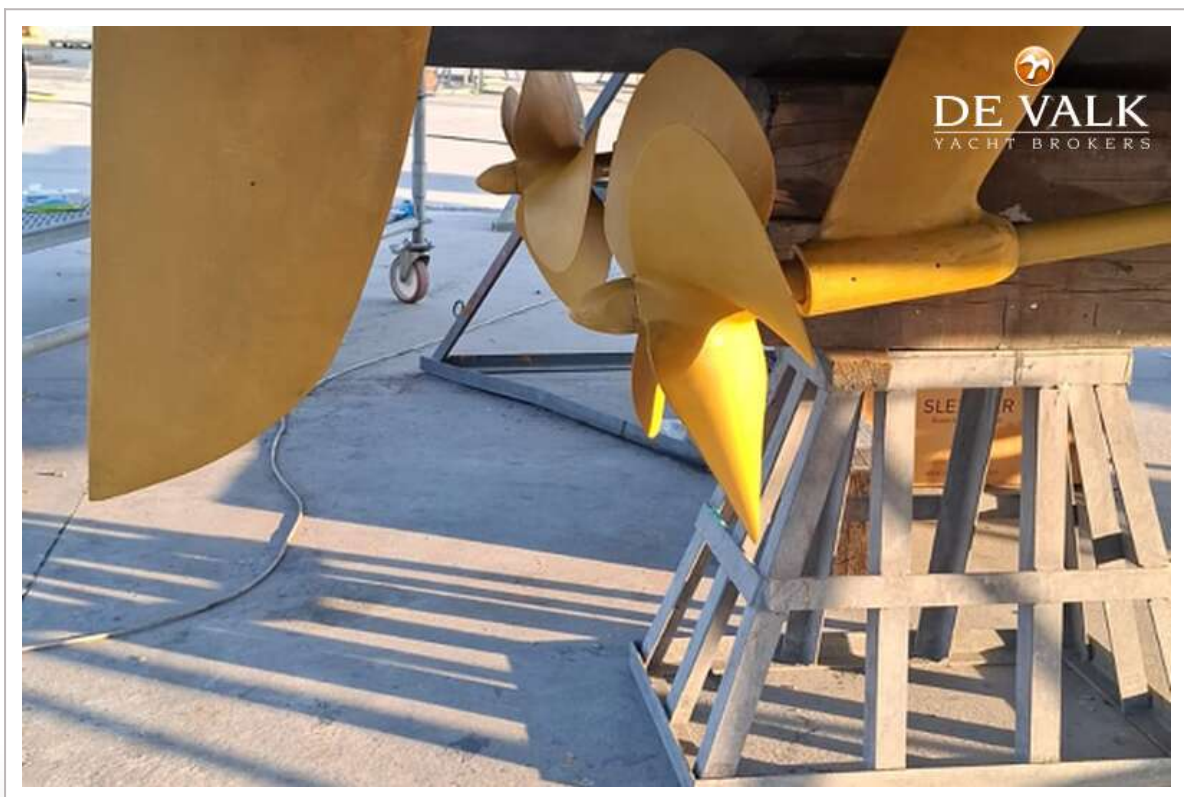
SEALINE T50



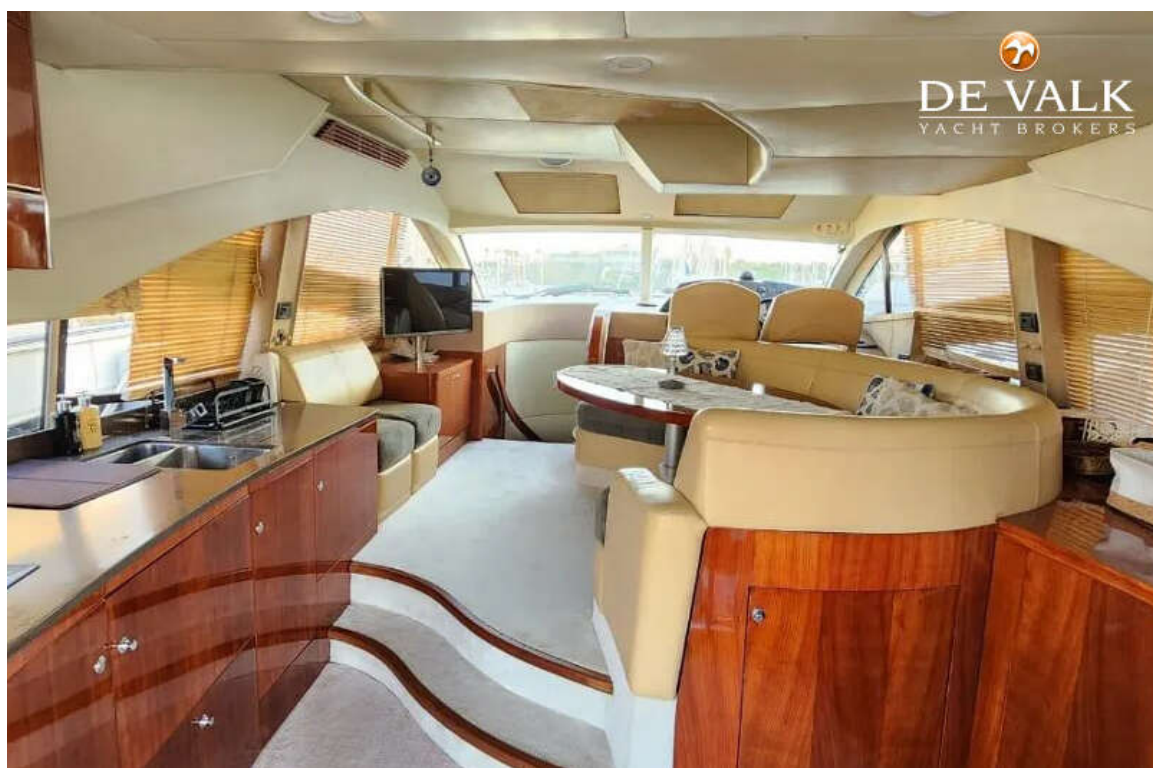
SEALINE T50



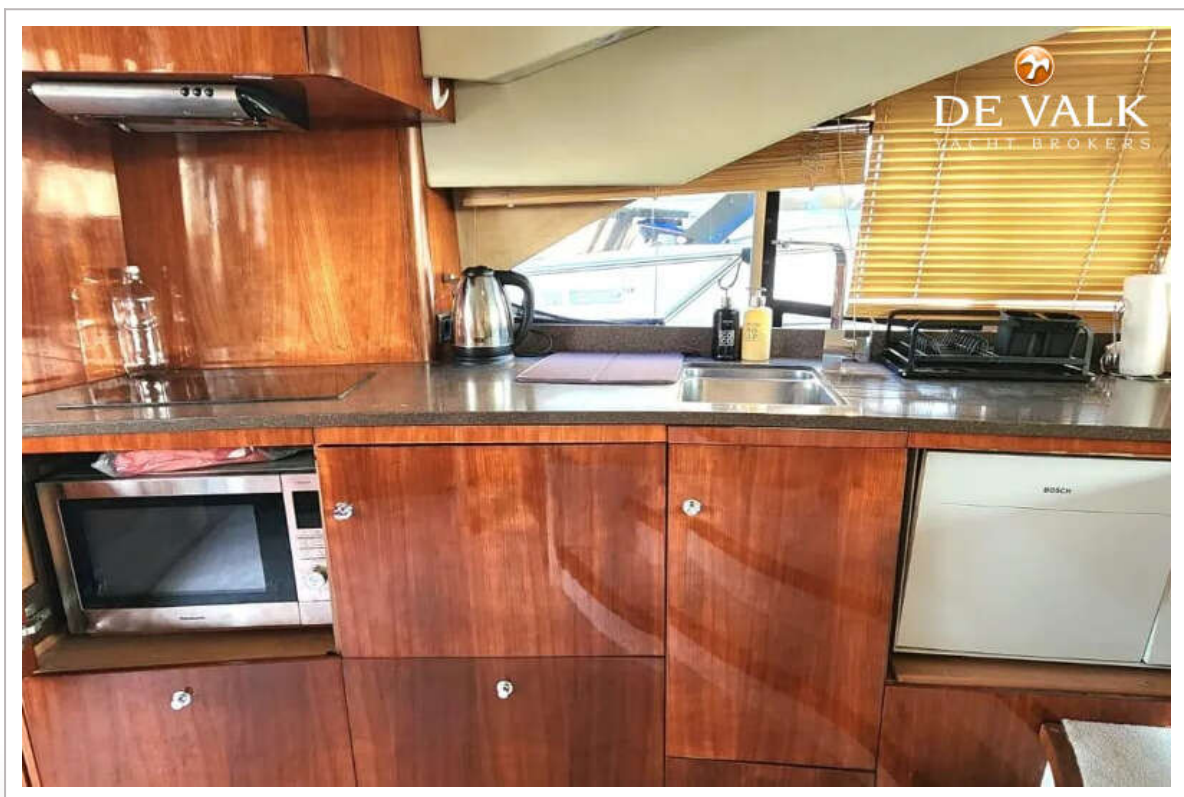
SEALINE T50



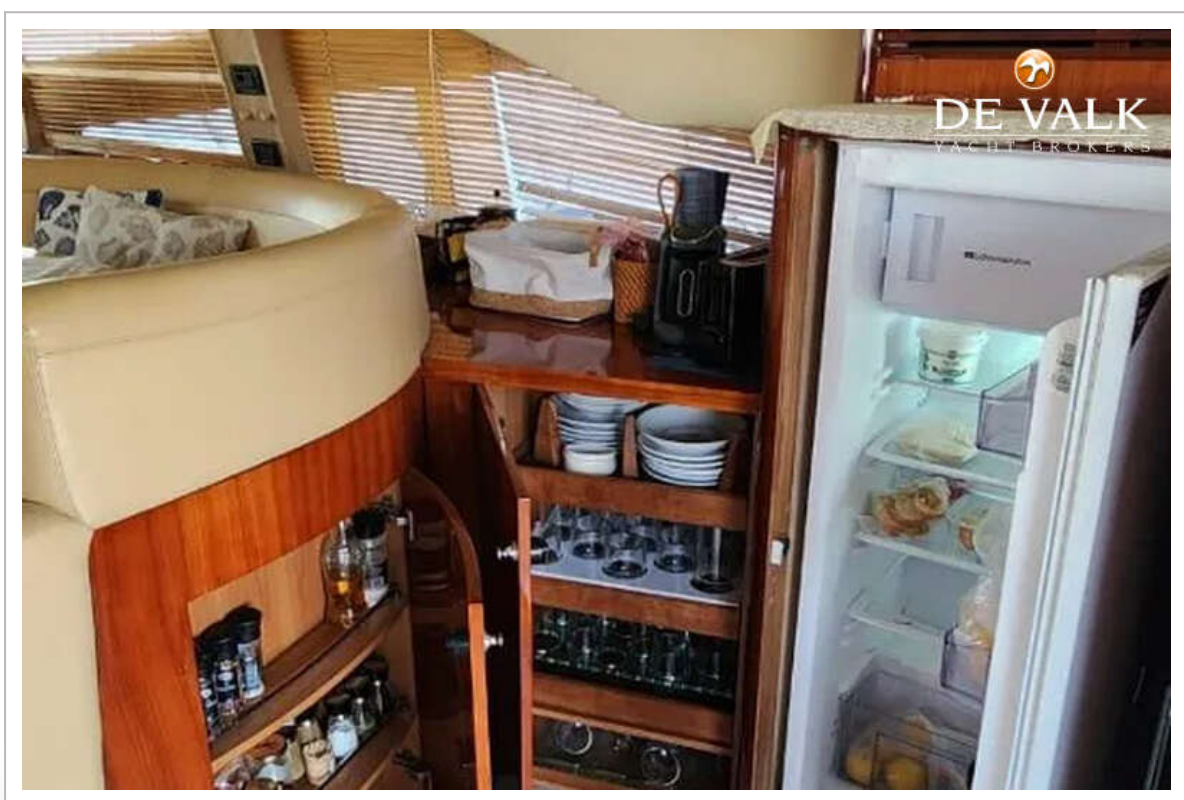
SEALINE T50



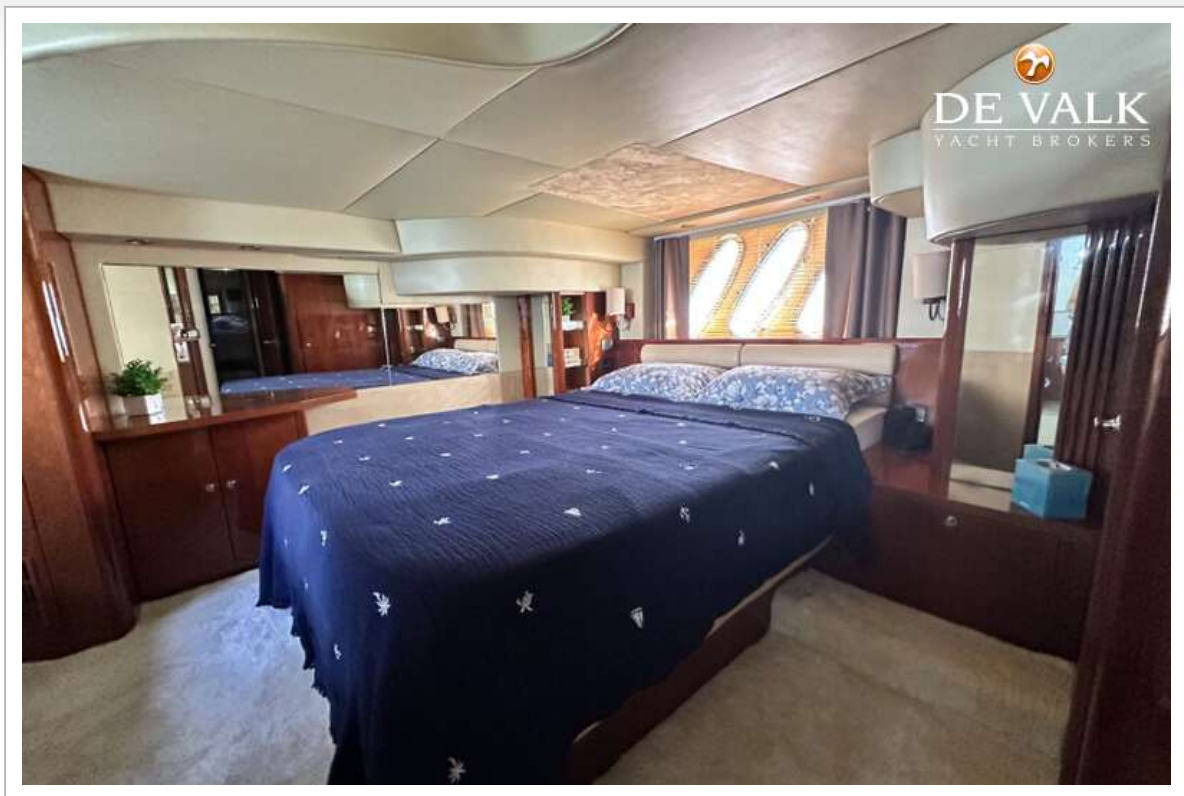
SEALINE T50



SEALINE T50



SEALINE T50



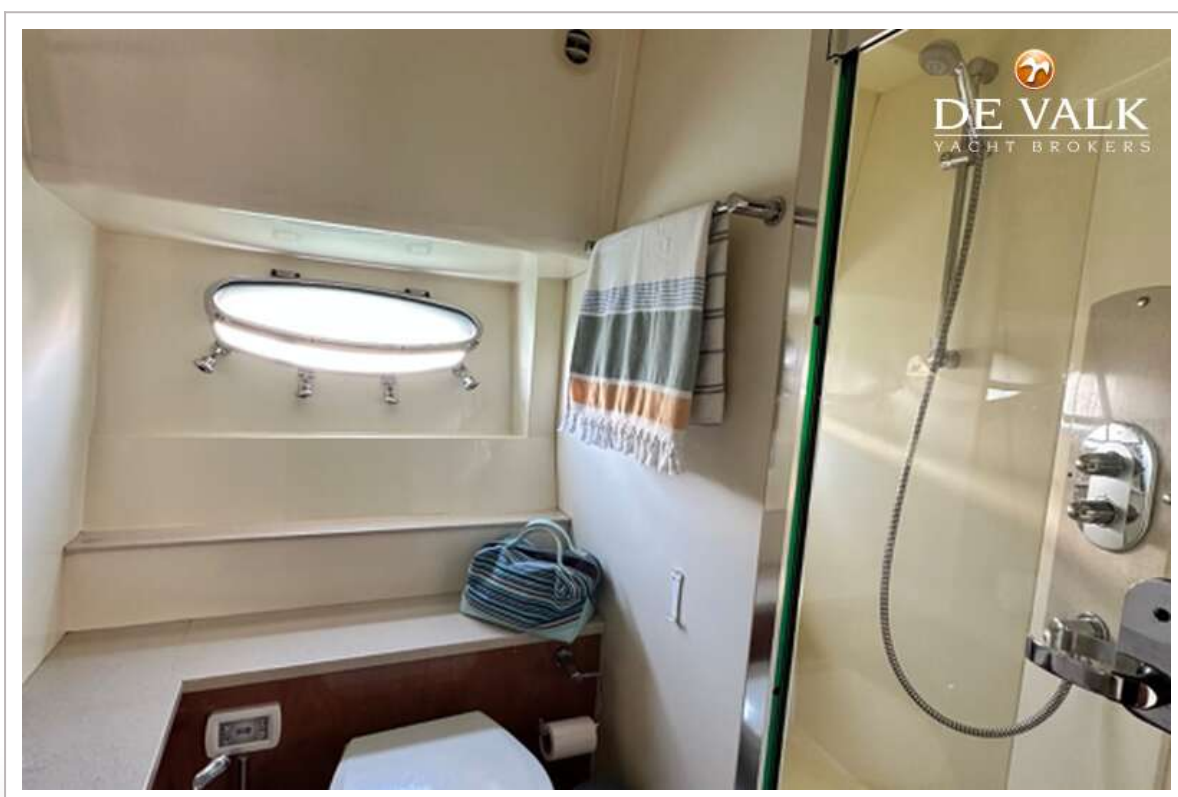
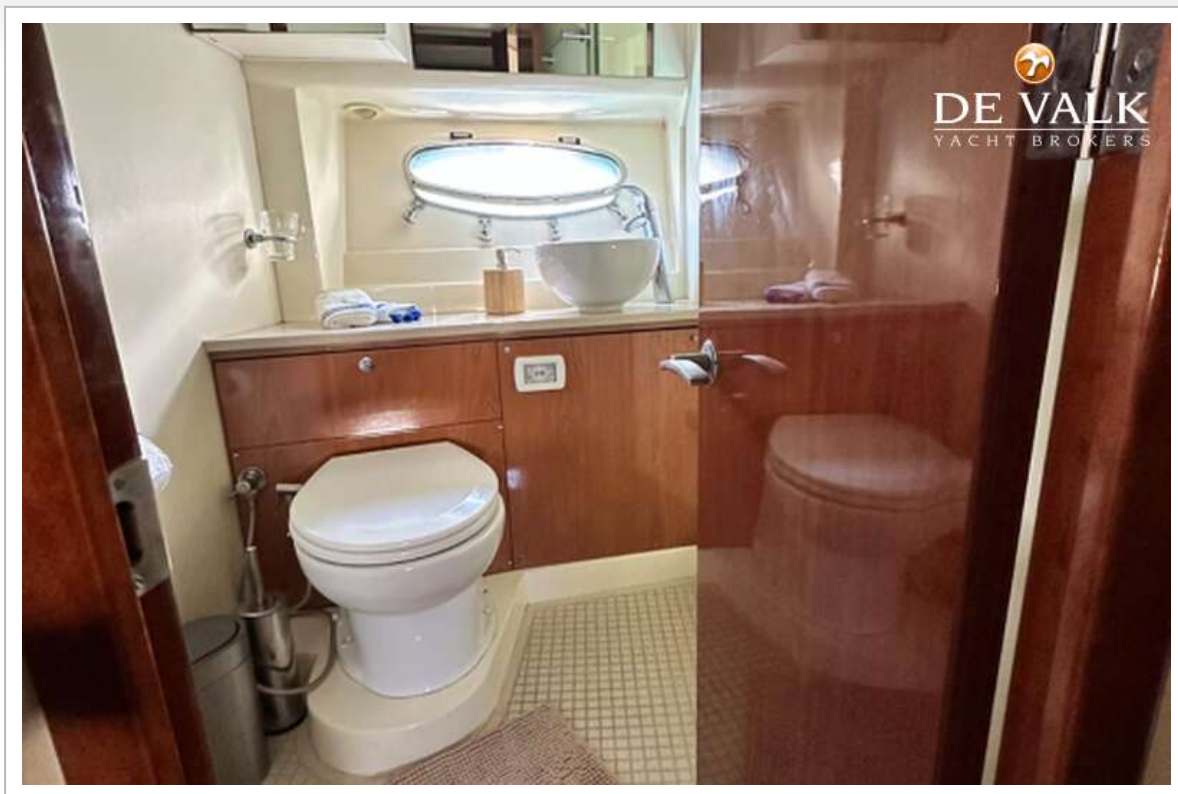
SEALINE T50



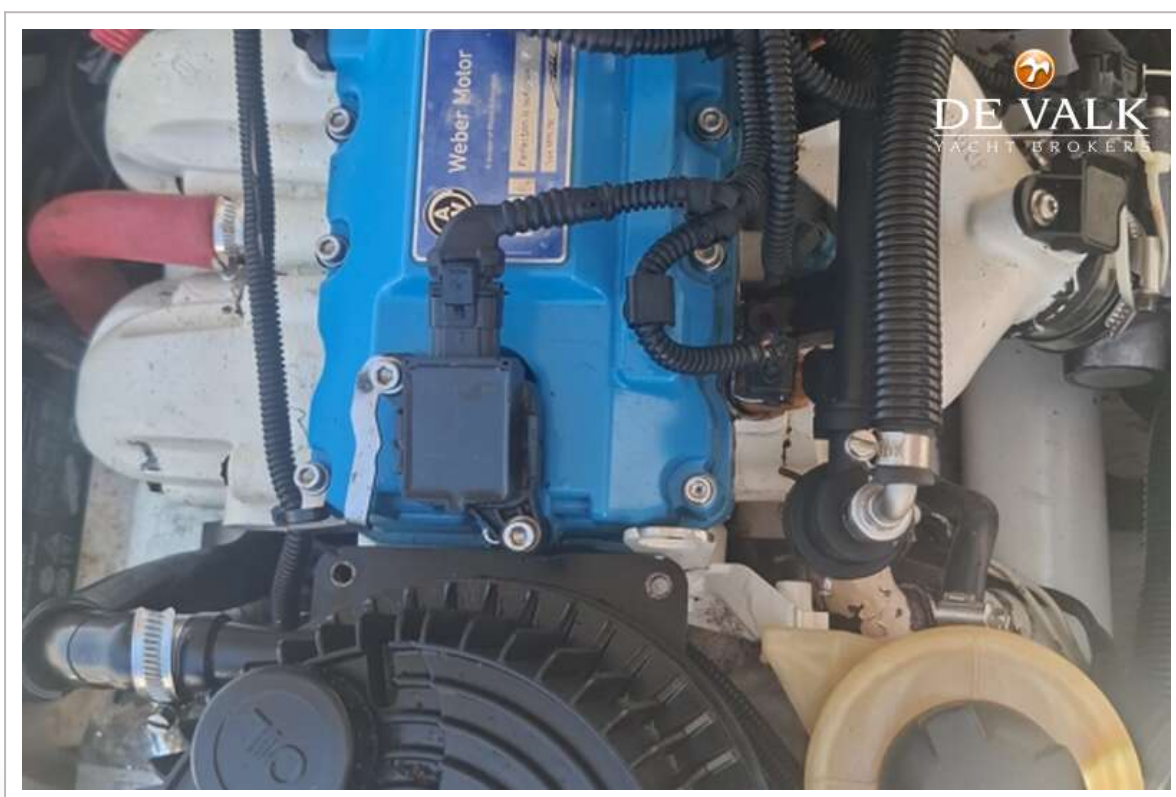
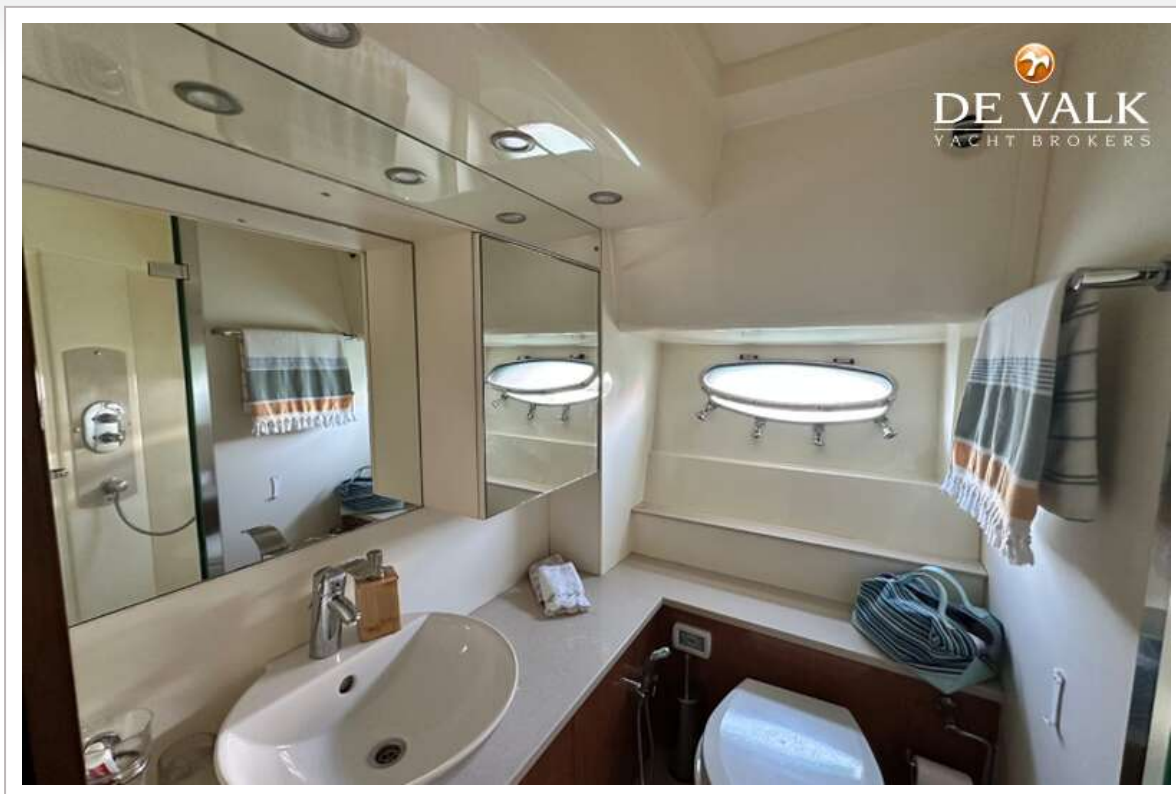
SEALINE T50



SEALINE T50



SEALINE T50



SEALINE T50

