



DE VALK
YACHT BROKERS



DE RUITER KOTTER 1550



DE VALK
YACHT BROKERS

DE RUITER KOTTER 1550

BROKER'S COMMENTS

The De Ruiter 1550 Canoe Stern is a highly seaworthy and solidly built vessel, fully equipped for long and comfortable voyages. This robust classic features modern Mitsubishi engines, a spacious engine room with standing height, and high-quality insulation combined with double glazing, ensuring a quiet, safe, and energy-efficient cruising experience. Thanks to its practical layout, sturdy construction, and thoughtful details, you will feel at home on board immediately. The vessel is equipped with aspudpole for easy anchoring at shallow locations.

Sofia Iliia-Salvanou

SPECIFICATIONS

Dimensions	15.50 x 4.80 x 1.60 (m)	Builder	De Ruiter
Built	1984	Cabins	2
Material	Steel	Berths	6
Engine(s)	2 x Mitsubishi diesel	Hp/Kw	2 x 162.00 (hp), 119.23 (kw)
Asking price	€ 250.000 (VAT)	Lying	contact Loosdrecht

CONTACT

Sales office	De Valk Corfu	Telephone	(+30) 6948681503
Address	New Port of Corfu, near Gouvia Marina 490 83 Corfu GR	E-mail	corfu@devalk.nl

DISCLAIMER

These particulars are given in good faith as supplied but cannot be guaranteed.



GENERAL

Model	DE RUITER KOTTER 1550
Type	motor yacht
LOA (m)	15,50
Beam (m)	4,80
Draft (m)	1,60
Air draft (m)	3,50
Headroom (m)	2,20
Year built	1984
Builder	De Ruiter
Country	The Netherlands
Designer	De Ruiter
Displacement (t)	36
CE norm	NA
Hull material	steel
Hull colour	white
Hull shape	round-bilged
Keel type	long keel
Bilge keels	yes
Superstructure material	steel
Superstructure (mm)	4
Rubbing strake	stainless steel
Deck material	steel
Deck finish	teak
Superstructure deck finish	teak
Cockpit deck finish	teak
Antifouling (year)	2024
Dorades	yes
Window frame	aluminium
Window material	double glazing
Portholes	steel



DE RUITER KOTTER 1550

Radar arch	collapsible
Fuel tank (litre)	steel 1500
Fuel tank 2 (litre)	steel 1500
Level indicator (fuel tank)	yes
Freshwater tank (litre)	2000
Blackwater tank (litre)	stainless steel 300
Blackwater tank extraction	pump
Wheel steering	hydraulic
Inside helm position	yes

ACCOMMODATION

Cabins	2
Berths	6
Interior	yes
Layout	yes
Floor	carpet
Deck saloon	yes
Saloon	yes
Headroom saloon (m)	2,2
Heating	central heating Diesel
Chart table	yes
Aft Cabin	yes
Dinette	yes
Dinette to convert into berth	yes
Galley	yes
Countertop	granite
Sink	stainless steel
Cooker	ceramic
Oven	yes
Microwave	yes
Fridge	yes



DE RUITER KOTTER 1550

Freezer	In fridge
Hot water system	on central heating
Water pressure system	electrical
Dishwasher	yes
Owners cabin	double bed And a single bed
Wardrobe	hanging and shelves
Bathroom	en suite
Toilet	en suite
Toilet system	electric
Wash basin	at the toilet
Shower	en suite
Guest cabin 1	v-bed
Bed length (m)	yes
Wardrobe	hanging and shelves
Toilet	shared
Toilet system	electric
Wash basin	at the toilet

MACHINERY

No of engines	2
Make	Mitsubishi
HP	162
kW	119.23
Fuel	diesel
Year installed	2010
Maximum speed (kn)	8
Cruising speed (kn)	7
Engine cooling system	freshwater heat exchanger
Drive	shaft
Engine controls	electrical
Gearbox	hydraulic



Bowthruster	electric
Exhaust	watercooled
Propeller type	fixed
Propeller shaft material	stainless steel
Shaft lubrication	water
Electric bilge pump	yes
Bilge alarm	yes
Generator	wet exhaust
Batteries	yes
Start battery	yes
Service battery	yes
Generator battery	yes
Bowthruster battery	yes
Windlass battery	yes
Battery charger/inverter	yes
Solar panel	yes
Shorepower	with cable

NAVIGATION

Compass	yes
Depth sounder	yes
Log	yes
VHF	2X
Autopilot	yes
Wind vane steering install.	yes
Radar	yes
GPS	yes
Plotter	yes
AIS receiver	yes
Camera	yes
Navigation lights	yes



Searchlight yes

EQUIPMENT

Sun awning yes

Boarding ladder stainless steel

Transom door yes

Anchor Rocna

Anchor chain 100 m stainless steel 316L

Anchor 2 Rocna

Windlass electrical

Windlass aft electrical

Deck wash yes

Dinghy rigid inflatable

Davits stainless steel

Davits controls manual

Sea railing stainless steel

Grab rail (superstructure) stainless steel With teak

Railing side opening gates yes

Wiper yes

Horn electric

Fenders yes

TV yes

Radio-cd player yes

Speakers in salon yes

Clock - barometer yes



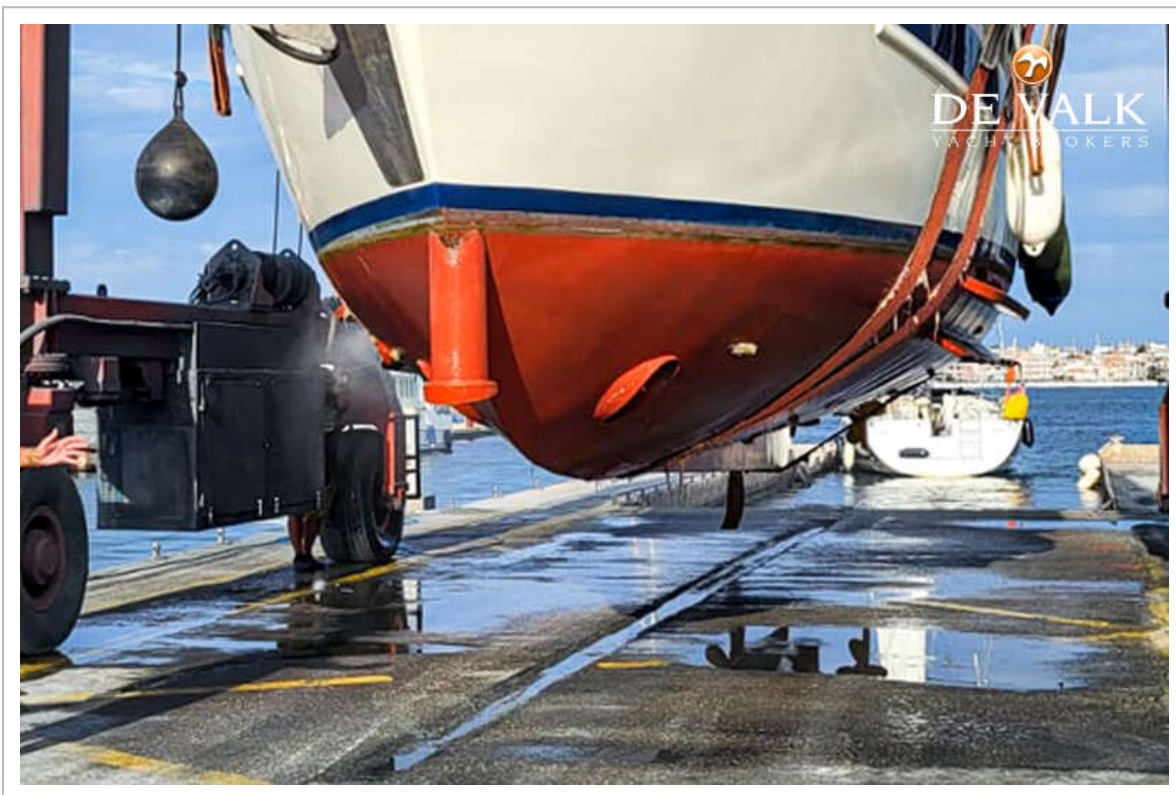
DE RUITER KOTTER 1550



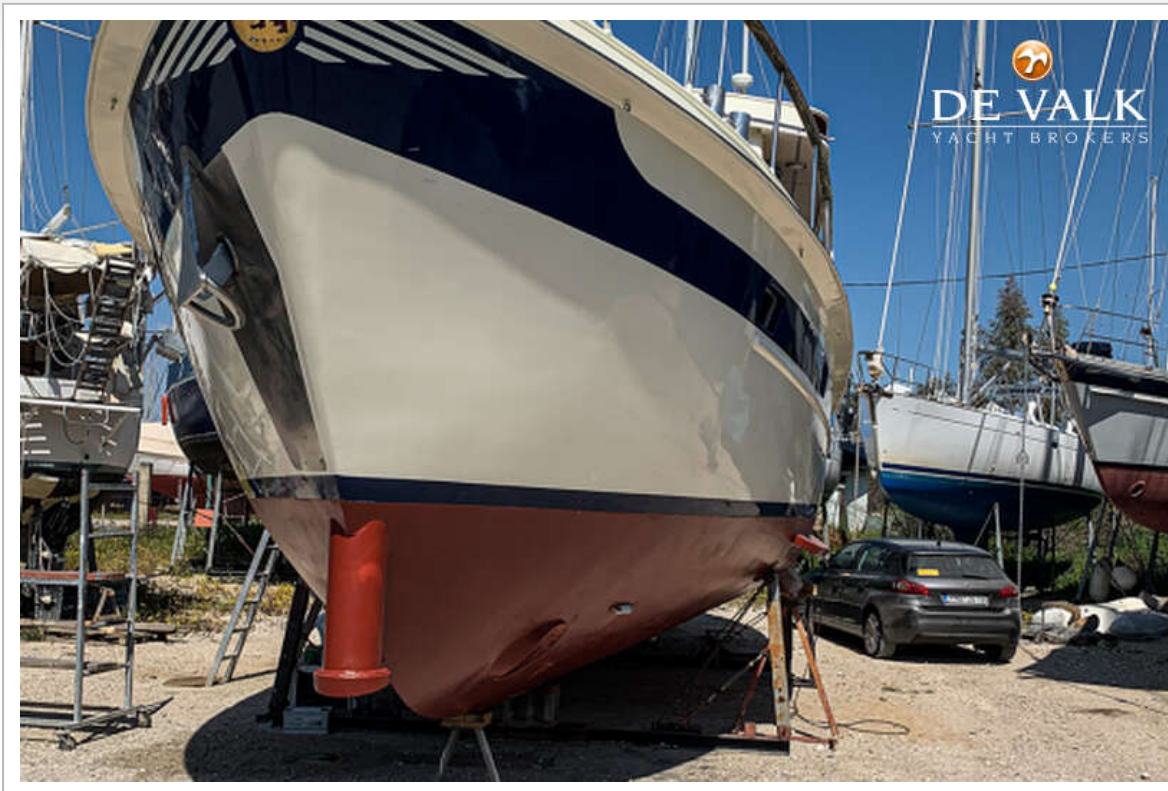
DE RUITER KOTTER 1550



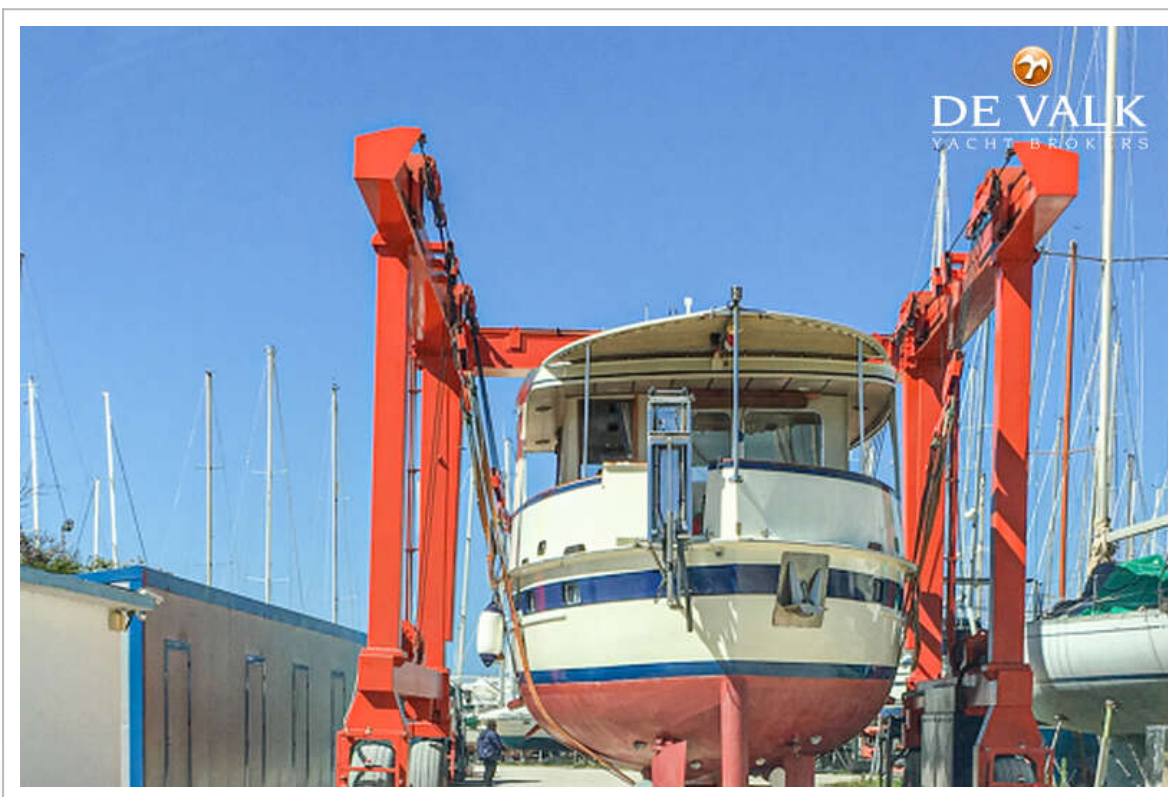
DE RUITER KOTTER 1550



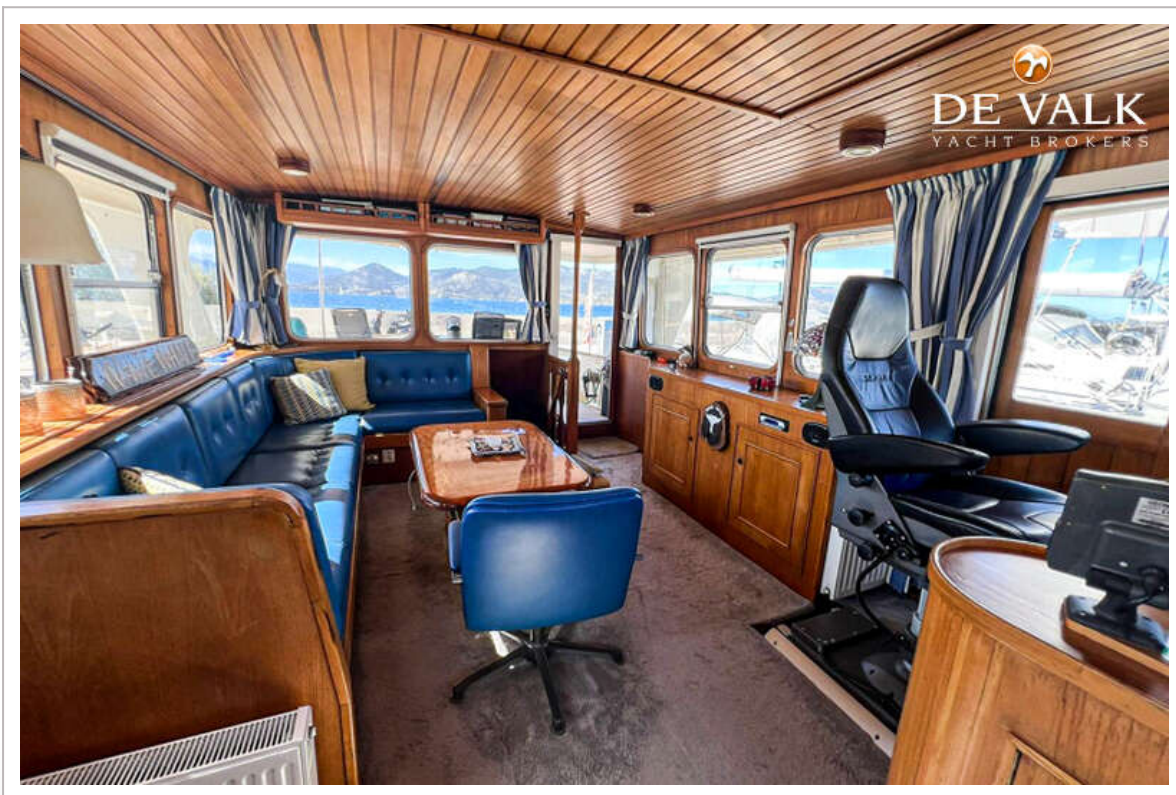
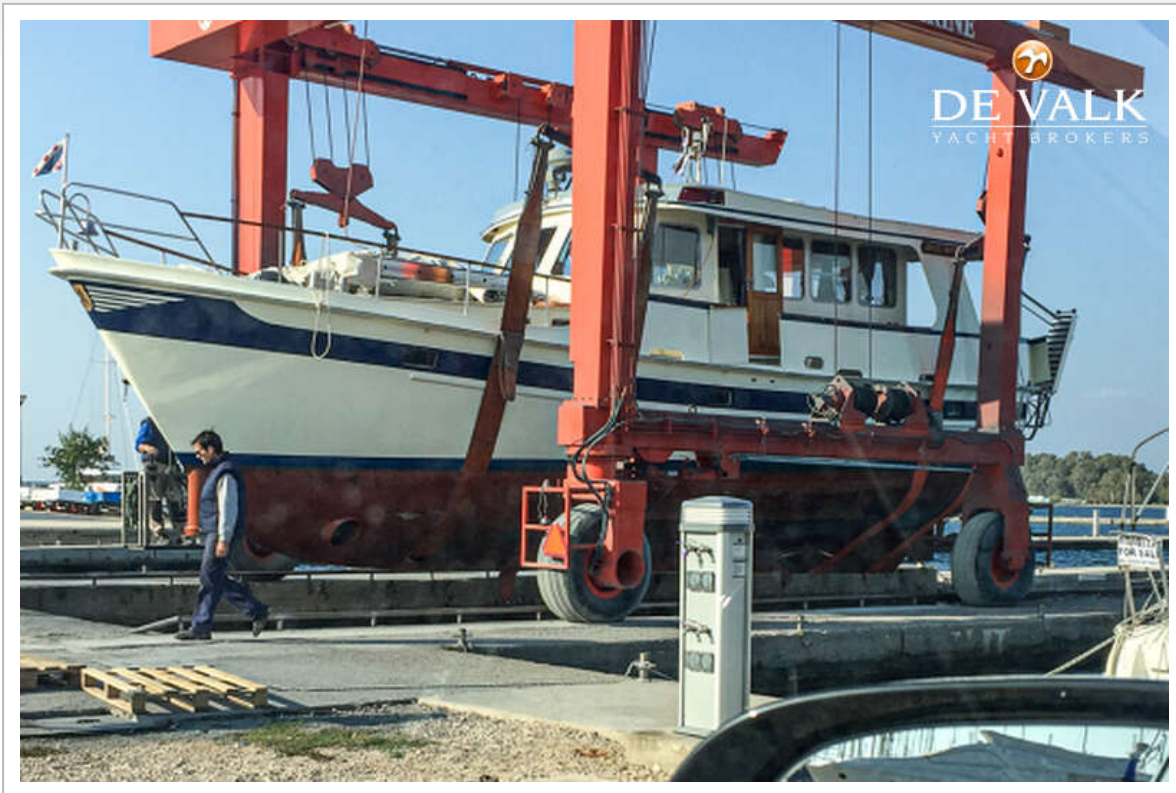
DE RUITER KOTTER 1550



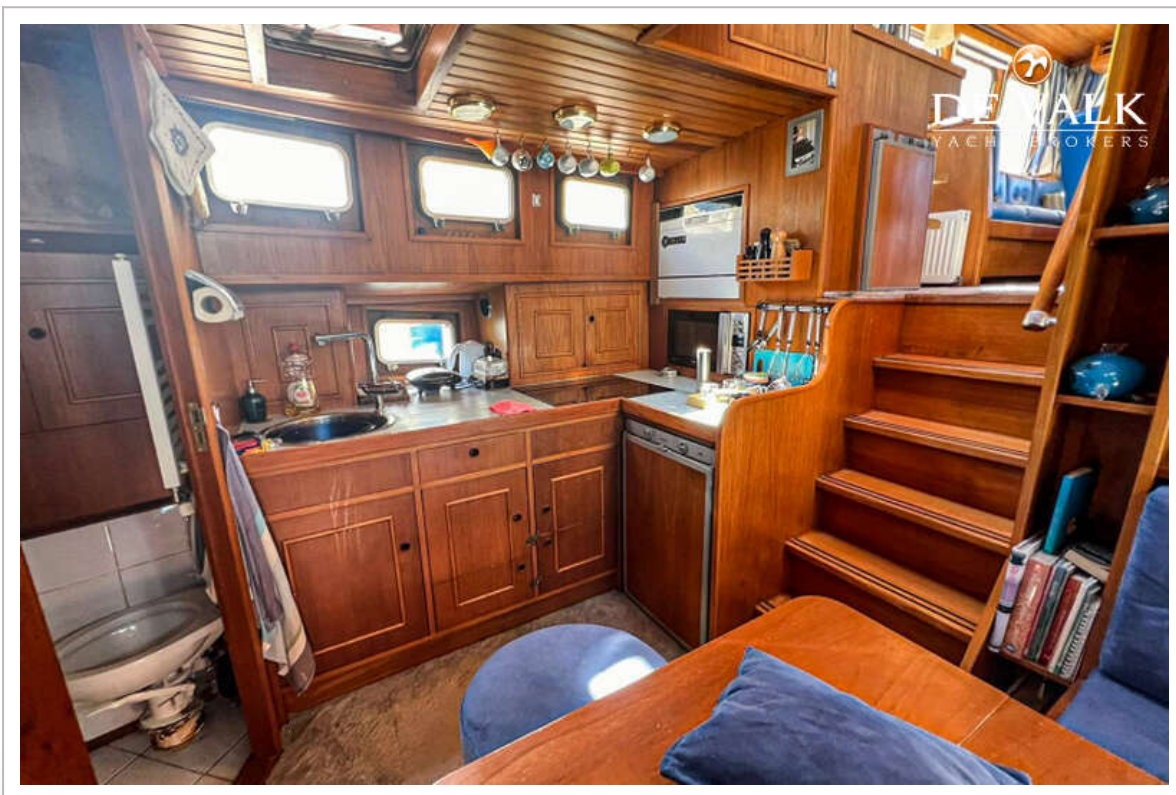
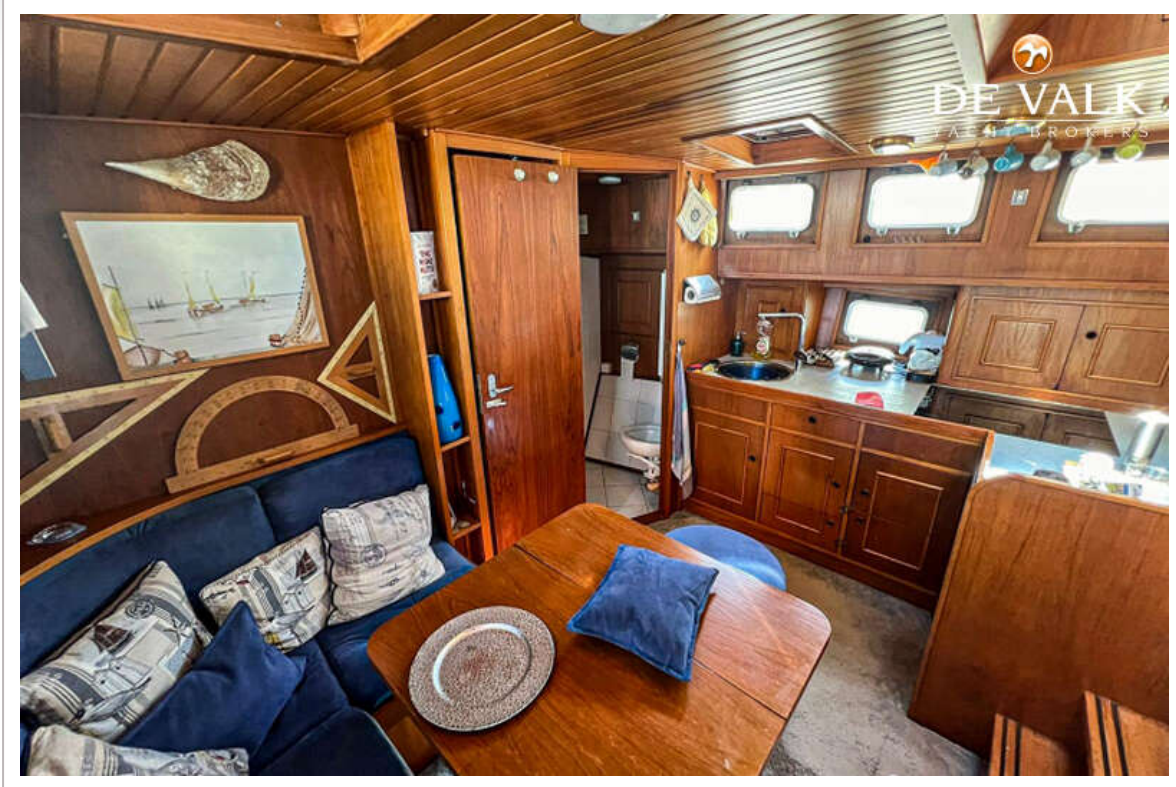
DE RUITER KOTTER 1550



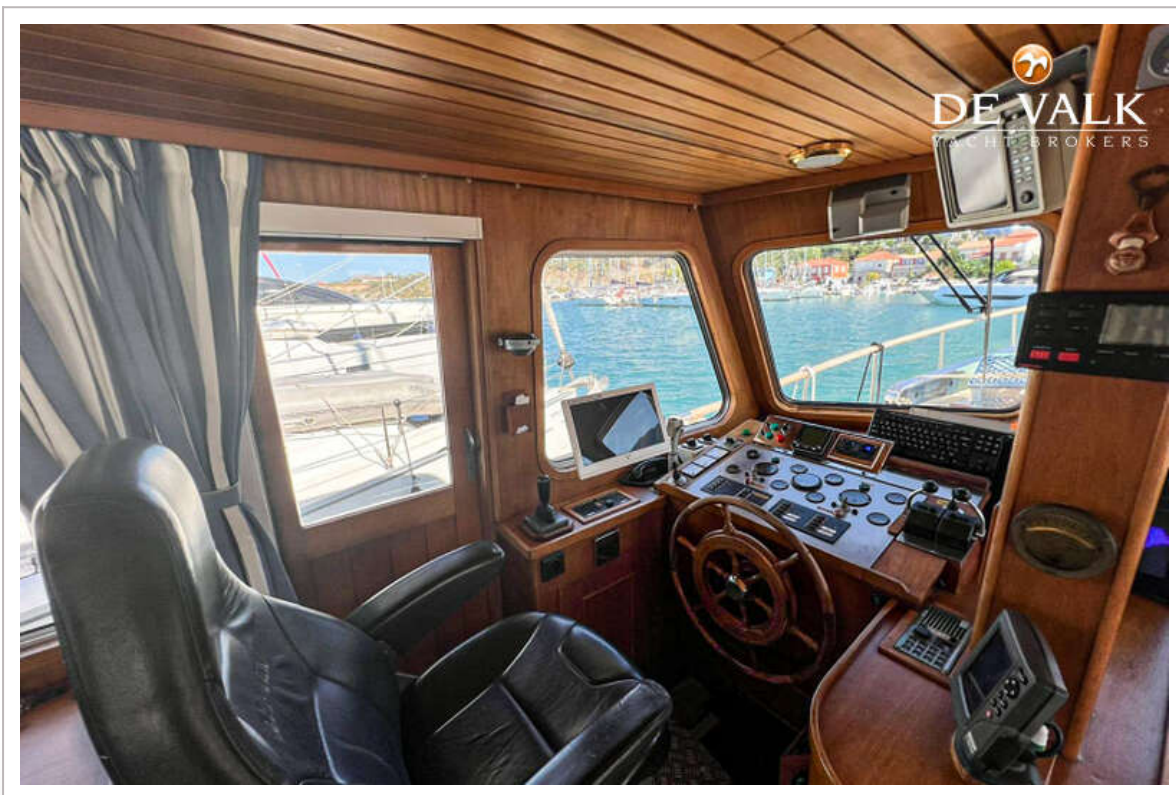
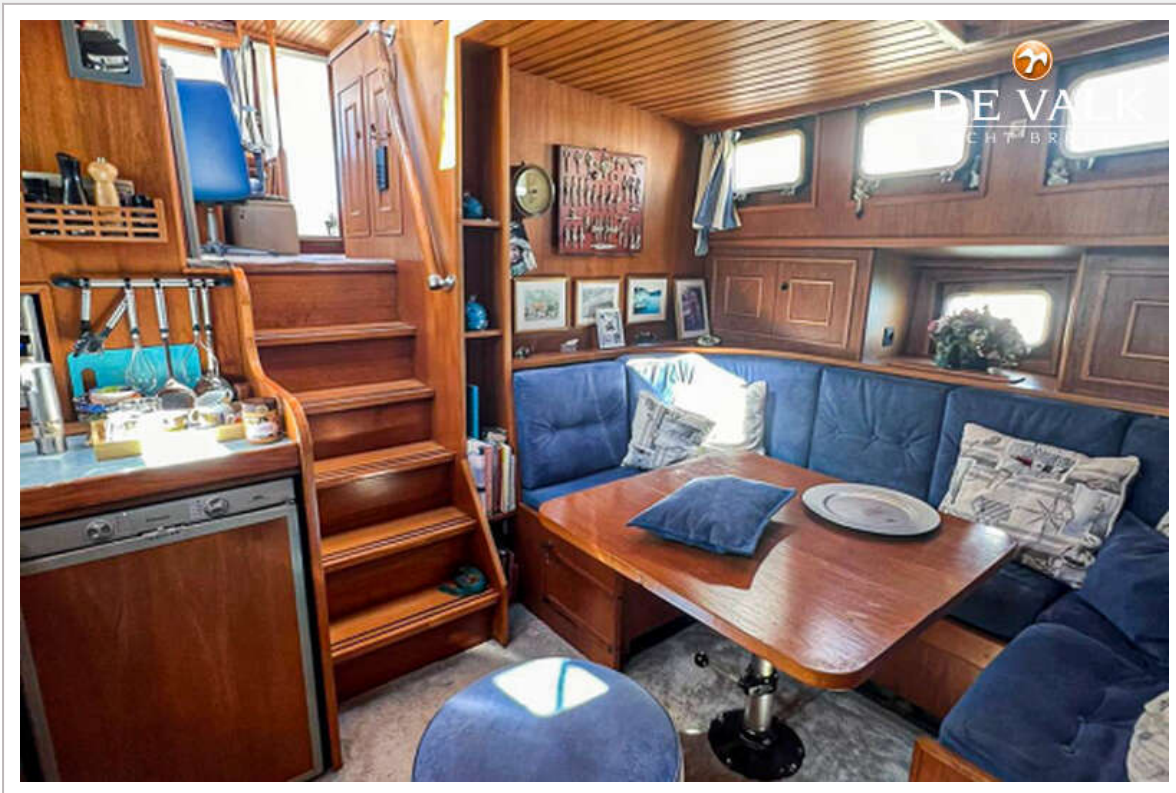
DE RUITER KOTTER 1550



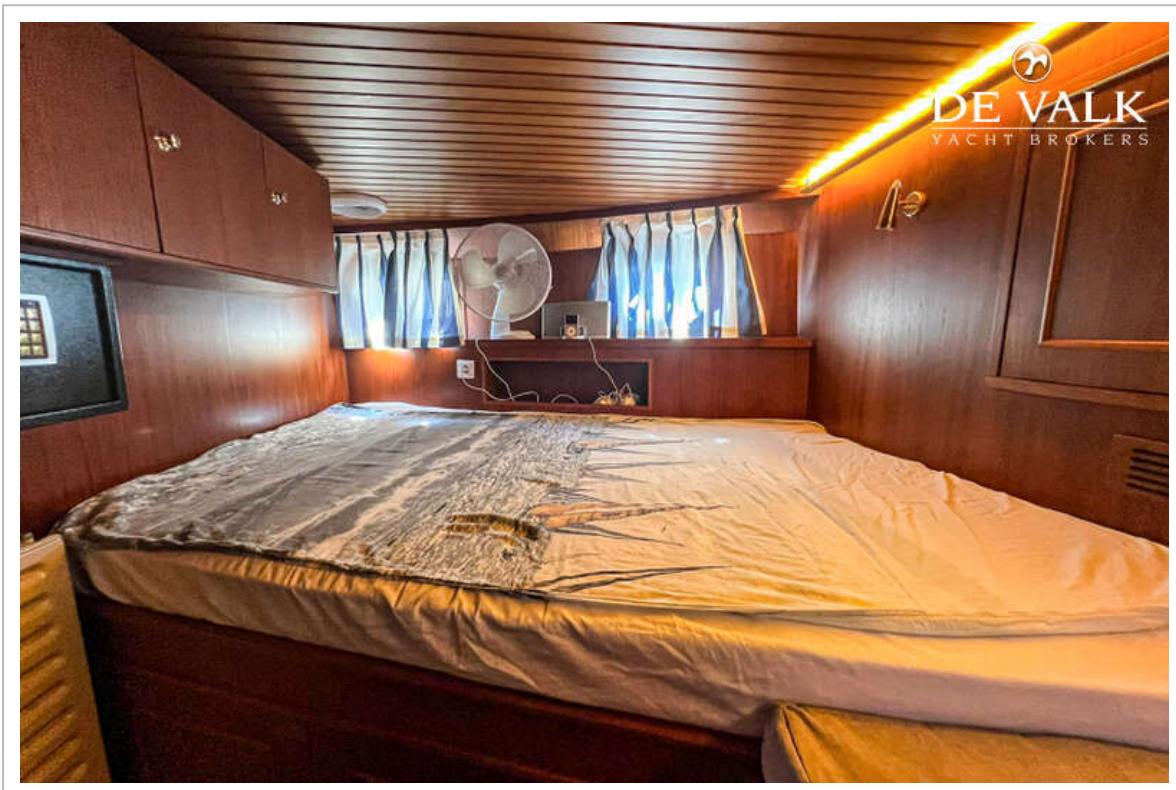
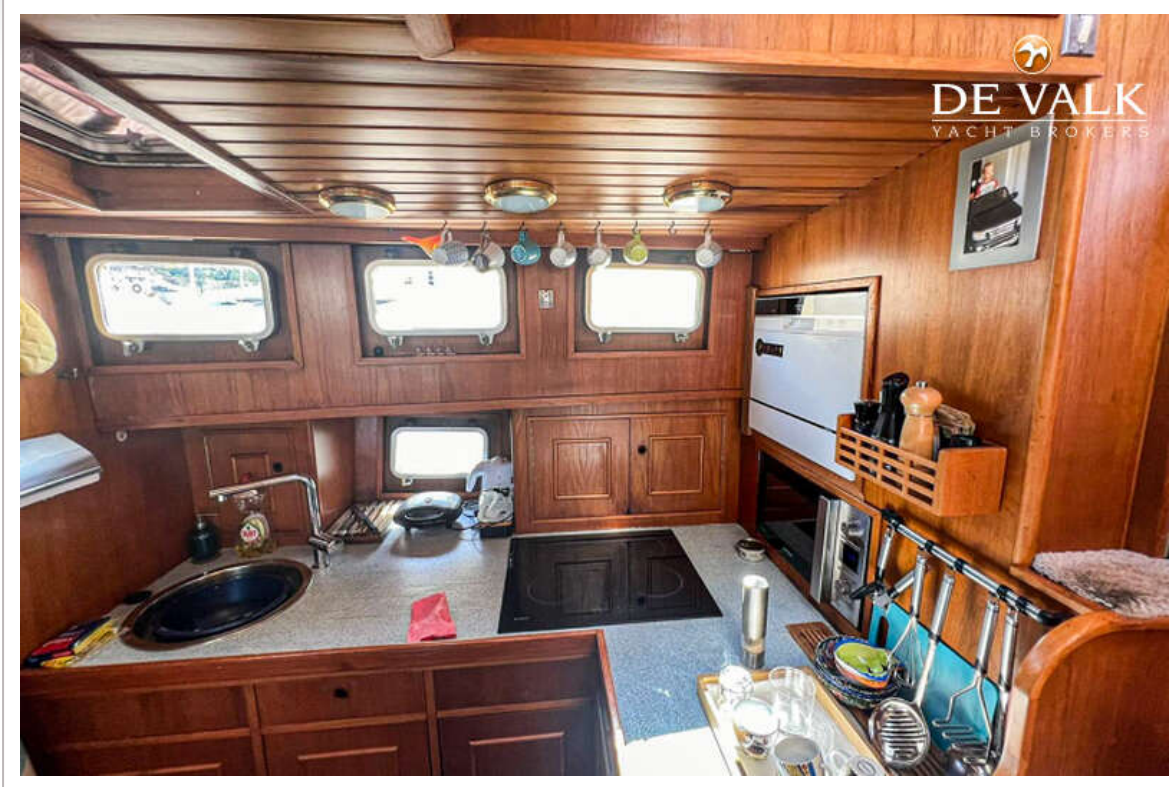
DE RUITER KOTTER 1550



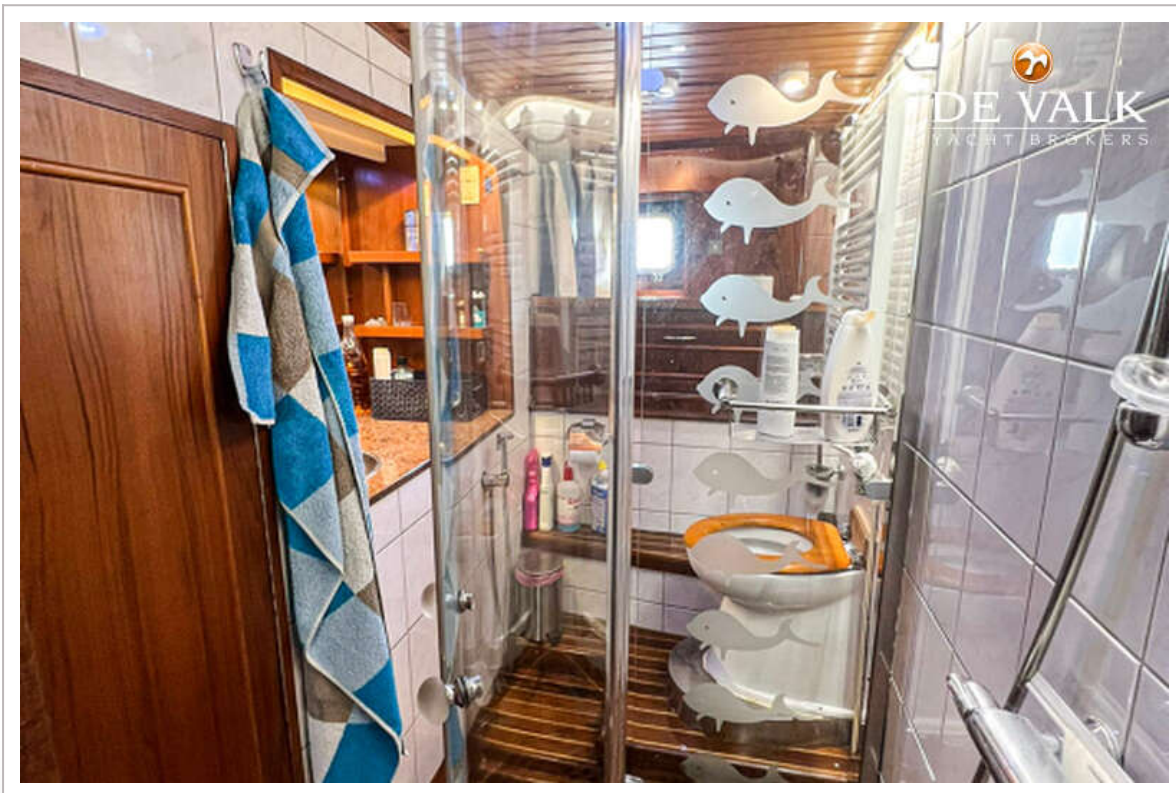
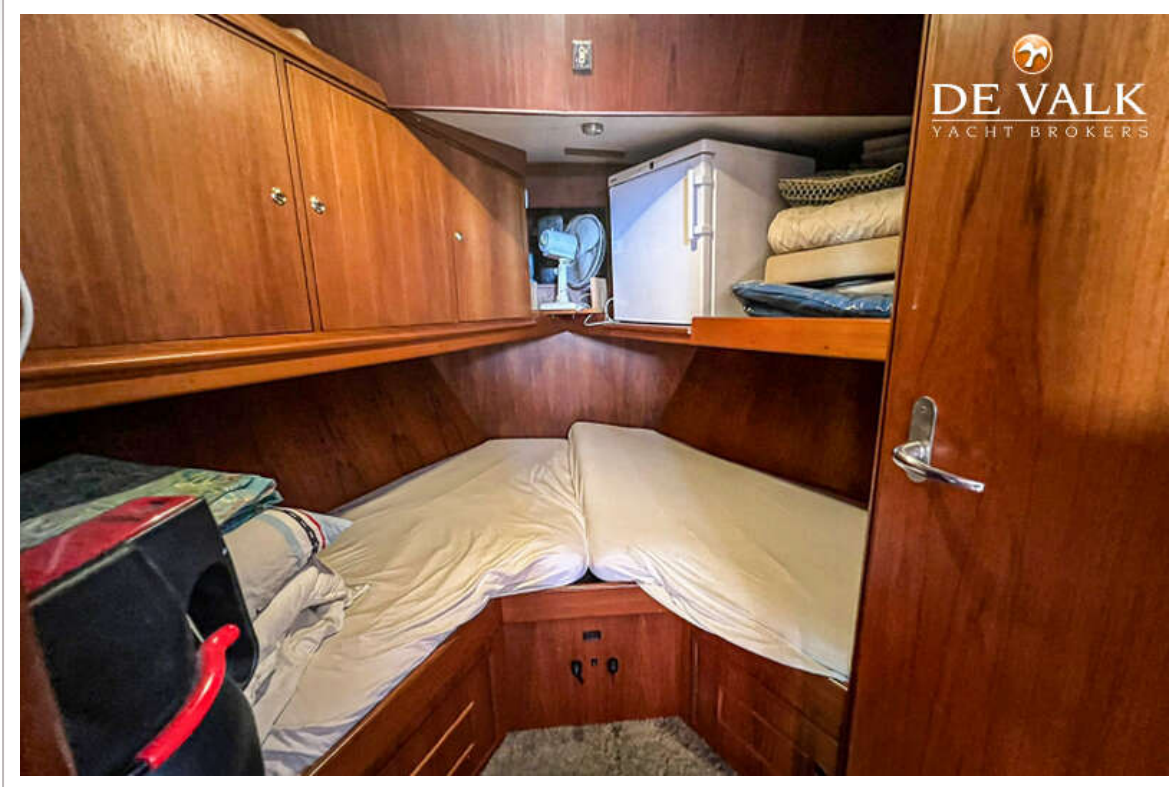
DE RUITER KOTTER 1550



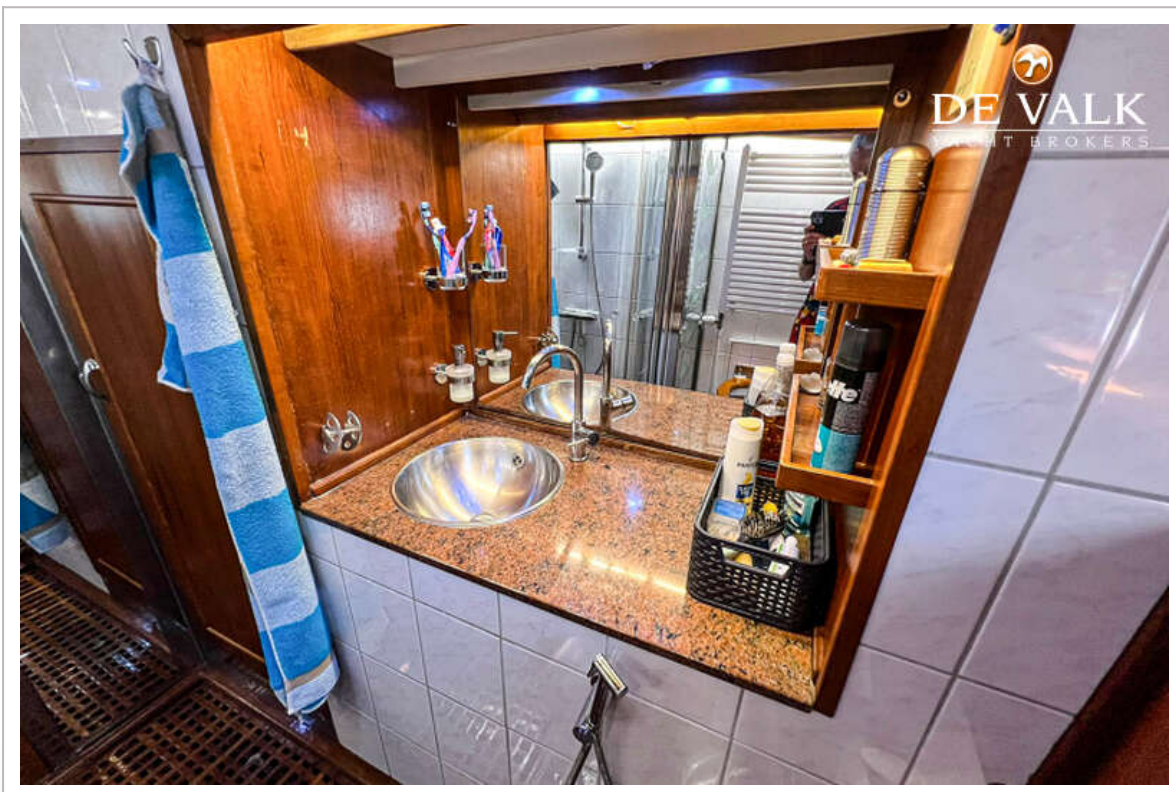
DE RUITER KOTTER 1550



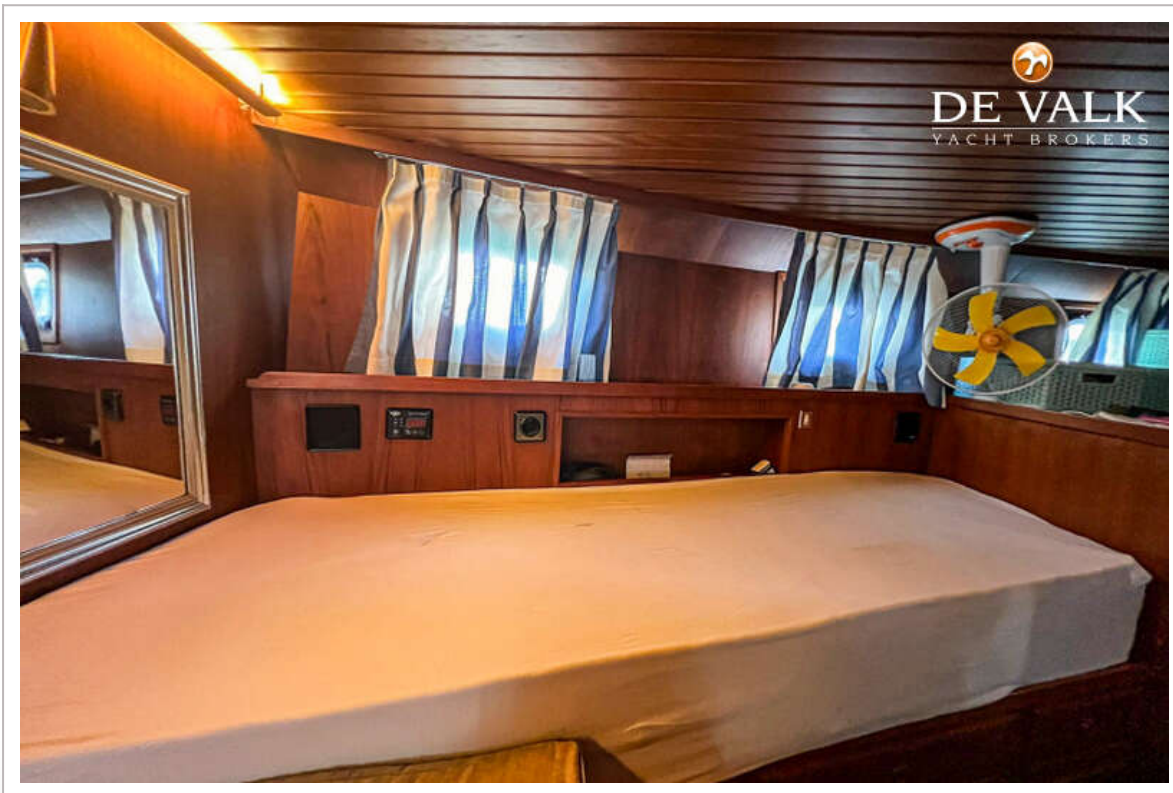
DE RUITER KOTTER 1550



DE RUITER KOTTER 1550



DE RUITER KOTTER 1550



DE RUITER KOTTER 1550

