



DE VALK
YACHT BROKERS



DANISH ROSE 37



DE VALK
YACHT BROKERS

DANISH ROSE 37

BROKER'S COMMENTS

This Danish Rose 37 is a well-maintained sailing yacht featuring a spacious deck saloon with plenty of light and comfort. Equipped with furling sails, practical rigging, and a bow thruster, she is easily sailed single-handed. The centreboard keel adds versatility, allowing access to shallow waters as well as confident offshore cruising. Recently repainted and fitted with new cushions, she has a fresh, inviting look. Carefully maintained throughout, this yacht offers reliability, comfort, and safety. Ready for new owners and adventures.

Stein Dubbeldam

SPECIFICATIONS

Dimensions	12.62 x 3.61 x 1.20 (m)	Builder	Kuipers Woudsend & Timmerfabriek De Jong
Built	1995	Cabins	1
Material	Steel	Berths	6
Engine(s)	1 x Yanmar 4JH-TE diesel	Hp/Kw	50.00 (hp), 37.00 (kw)
Asking price	Under Offer (VAT)	Lying	elsewhere / Not at sales office

CONTACT

Sales office	De Valk Hindeloopen B.V.	Telephone	+31 514 52 40 00
Address	Oosterstrand 1 8713 JS Hindeloopen NL	E-mail	hindeloopen@devalk.nl

DISCLAIMER

These particulars are given in good faith as supplied but cannot be guaranteed.



DANISH ROSE 37

GENERAL

Model	DANISH ROSE 37
Type	motorsailer
LOA (m)	12,62
Beam (m)	3,61
Draft (m)	1,20
Air draft (m)	13,50
Headroom (m)	2,05
Year built	1995
Builder	Kuipers Woudsend & Timmerfabriek De Jong
Country	The Netherlands
Designer	Martin Bekebrede
Displacement (t)	14
Hull material	steel
Hull colour	black
Hull thickness (mm)	Keel: 8 mm Underwater: 5 mm Abovewater: 4 mm
Hull shape	multi hard chine
Keel type	centreboard 1,20 - 2,20 mtr. with manual operated winch cable
Superstructure material	aluminium
Superstructure (mm)	5 mm
Deck plate thickness (mm)	4 mm
Rubbing strake	steel
Deck material	steel
Deck finish	non-skid paint
Antifouling (year)	2025
Window frame	aluminium Technautic
Window material	double glazing Front and aft 6/4/4, side windows single 6 mm
Deckhatch	3x 50 x 50 Boomsma
Portholes	8x Boomsma 236 mm
Insulation	glasswool 50 MM to waterline
Fuel tank (litre)	stainless steel Aprox 375 ltr.



Level indicator (fuel tank)	yes
Freshwater tank (litre)	stainless steel Aprox 375 ltr.
Level indicator (freshwater)	yes
Wheel steering	hydraulic Both
Inside helm position	yes
Outside helm position	Custom pedestal with a 80 cm diameter wheel spair wheel 60 cm
More info on hull	LOD 10,90
More info on paintwork	Repainted 2025

ACCOMMODATION

Cabins	1
Berths	6
Interior	teak
Floor	teak and holly
Pilot house/deck saloon	yes
Saloon	yes
Heating	calogas ducted hot air Truma
Navigation center	yes
Dinette to convert into berth	Lower salon seating
Convertible berth	Wheelhouse seating
Opening door to cockpit	yes
Countertop	wood Teak
Sink	stainless steel Double
Cooker	calor gas Allpa 3 burner New 2025
Oven	In Cooker
Gas alarm	1x Vetus GD90 gasalarms
Fridge	Transcolar with seperate compressor
Hot water system	220V + engine Boiler 31 ltr. 500 W
Water pressure system	electrical Vetus
Owners cabin	double bed



Wardrobe	hanging and shelves
Wash basin	in the cabin
Toilet	separate
Toilet system	manual Talamex 2024
Wash basin	at the toilet
Extra info	Upholstery renewed in 2025

MACHINERY

No of engines	1
Make	Yanmar
Type	4JH-TE
HP	50
kW	37
Fuel	diesel
Year installed	1994
Maximum speed (kn)	6
Cruising speed (kn)	5
Engine hours	2931
Engine cooling system	freshwater heat exchanger
Drive	shaft
Shaft seal	yes
Engine controls	bowden cable 2024
Gearbox	mechanical Overhauled in 2024
Bowthruster	electric 24 Volt CP 50 Cupa
Thrust bearing	yes
Propeller type	fixed
Propeller blades	4
Shaft lubrication	oilbath
Electric bilge pump	yes
Electrical installation	12 V DC & 220 V AC
Batteries	4 x



DANISH ROSE 37

Start battery	1x 12 V 230 Ah
Service battery	2x 12 V 230 Ah 2024
Bowthruster battery	yes
Battery charger	Victron 12 V 40 Ah Victron 24 Volt 15 Ah
Solar panel	2x

NAVIGATION

Compass	Mendes magnetic pedestal compass
Depth sounder	Autohelm ST 50
Log	Autohelm ST 50
Windset	Autohelm ST 50
VHF	Icom IC-M330
GPS	Autohelm ST 50
Plotter	Raymarine C80

EQUIPMENT

Cockpit cover	De Vries Lemmer
Winter cover	yes
Anchor	CQR Plough 15 KG
Anchor chain	7 mm 30 mtr.
Windlass	manual Allpa Royal
Deck wash	yes
Sea railing	stainless steel
Railing side opening gates	yes
Wiper	4x Lankhorst 110 GR 12 Volt
Fenders	yes
Mooring lines	yes
Radio	New Kenwood radio is present, needs to be installed
Speakers in salon	4x Kenwood

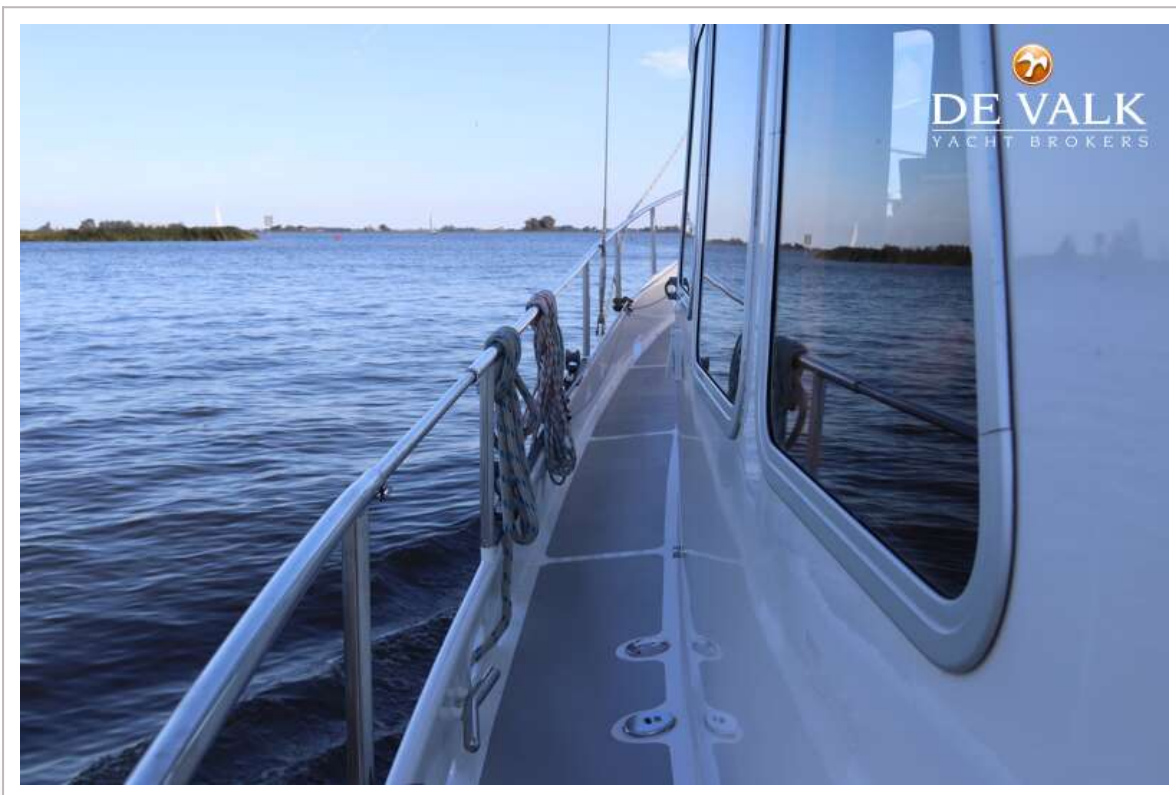


RIGGING

Rigging	ketch-cutter
Brand mast	Sparcraft
Material mast	aluminium
Spreaders	Single
Mainsail	20m ² De Vries Lemmer
Stoway mast	Furlex
Cutterstay	yes
Mizzen	Zeilmakerij Zwaan 11m ²
Jib	15m ²
Genoa	33,5 m ²
Genoa furler	Profurl
Cutter furler	Profurl
Primary sheet winch	2x Allpa 39.2 2 speed ST
Halyard winches	2x Allpa 30 2 speed ST
Multifunctional winches	1x Allpa 30 2 speed ST



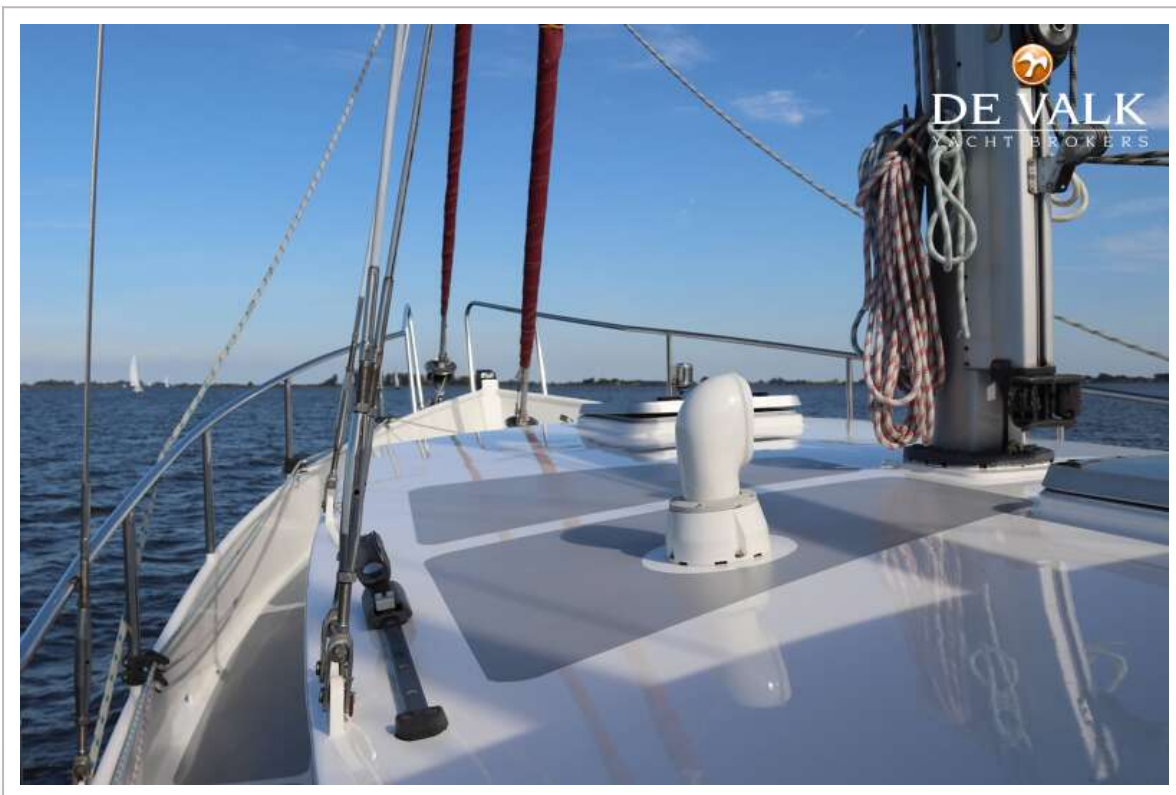
DANISH ROSE 37



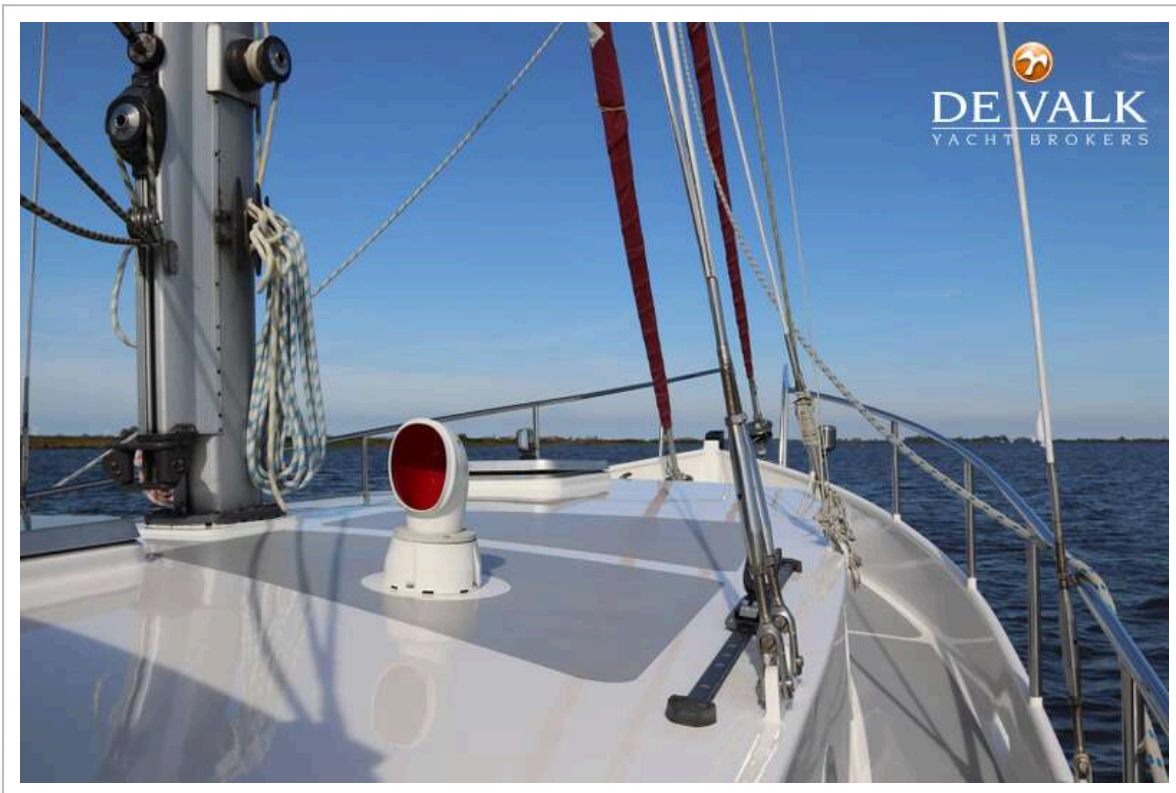
DANISH ROSE 37



DANISH ROSE 37



DANISH ROSE 37



DANISH ROSE 37



DANISH ROSE 37



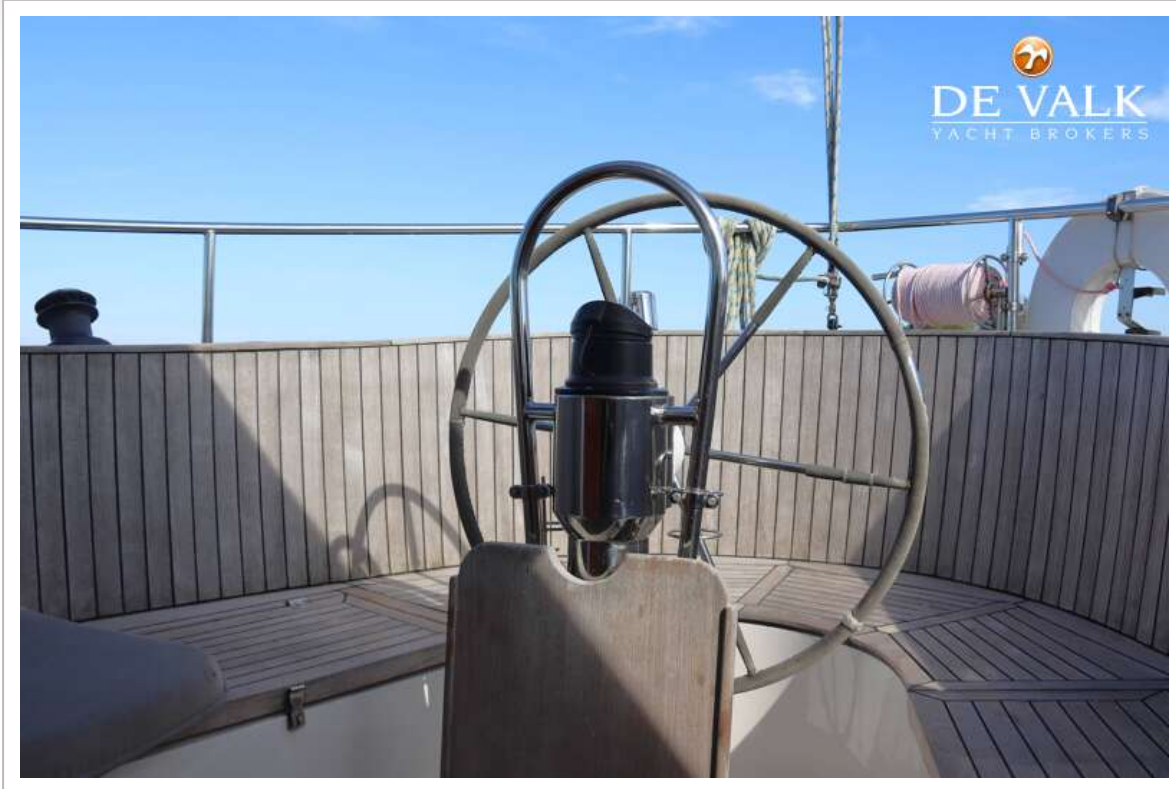
DANISH ROSE 37



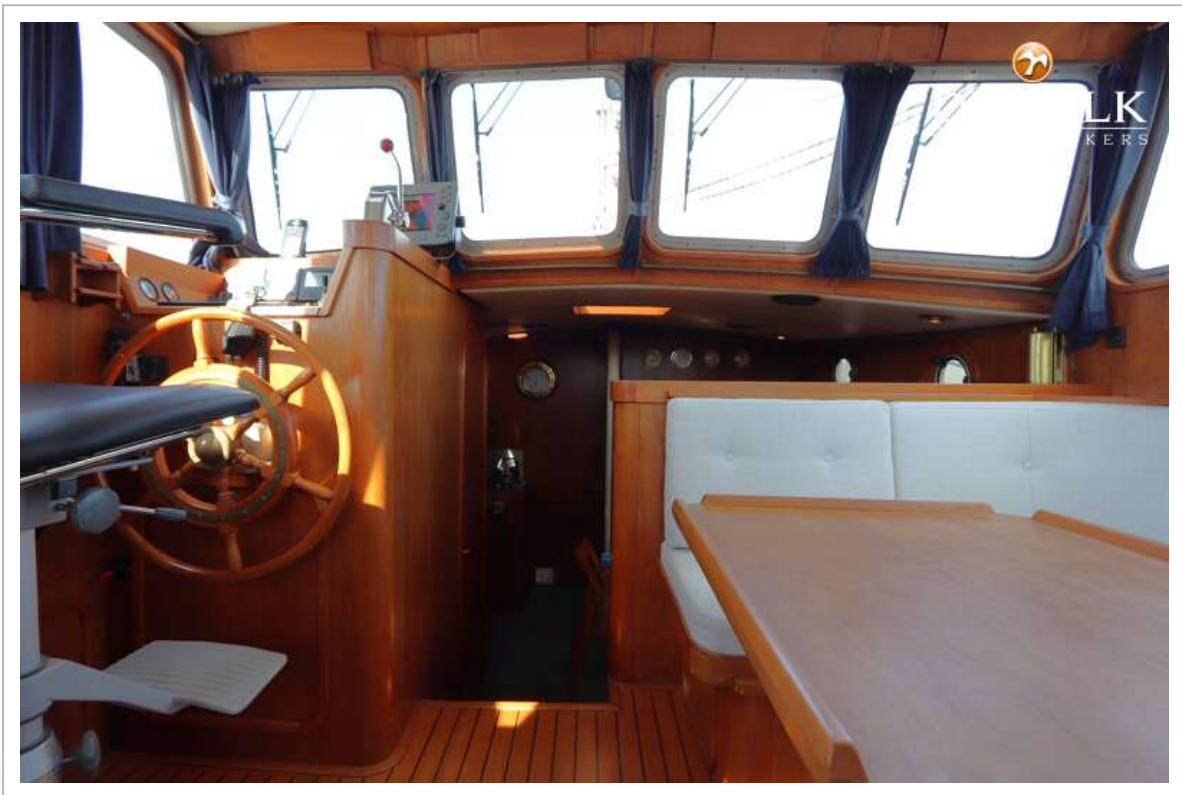
DANISH ROSE 37



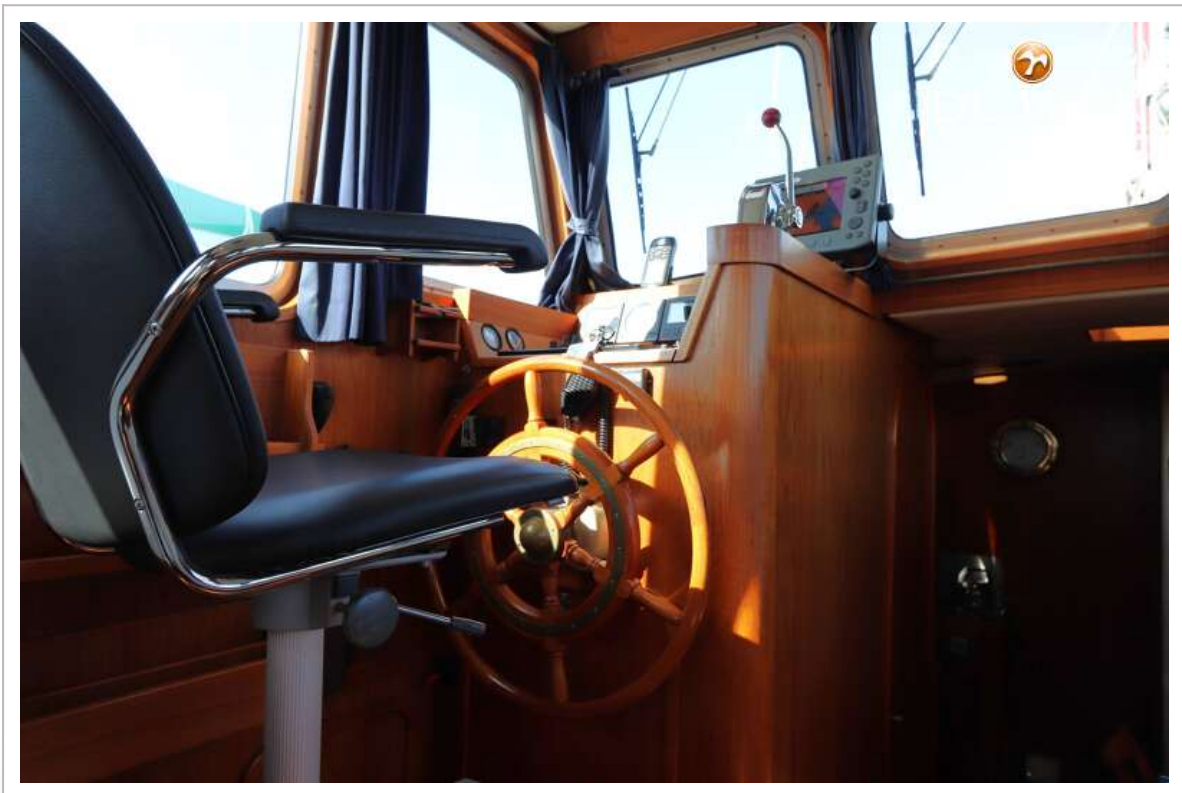
DANISH ROSE 37



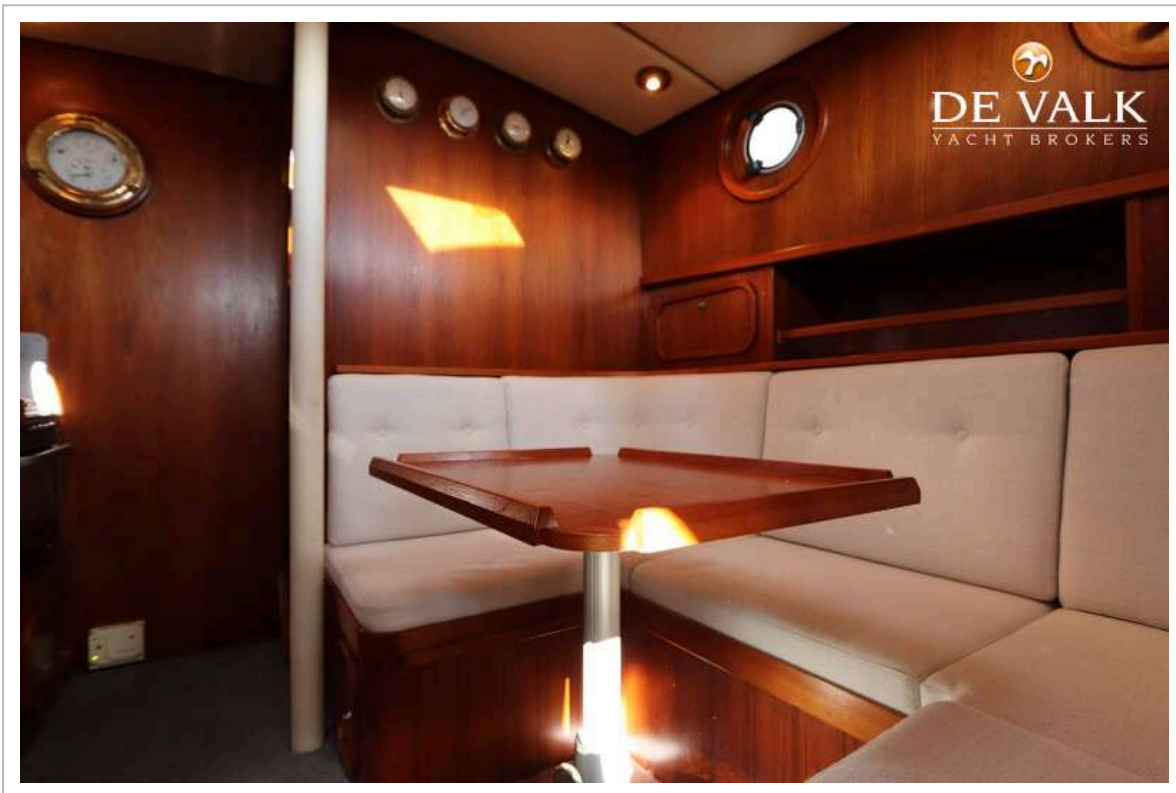
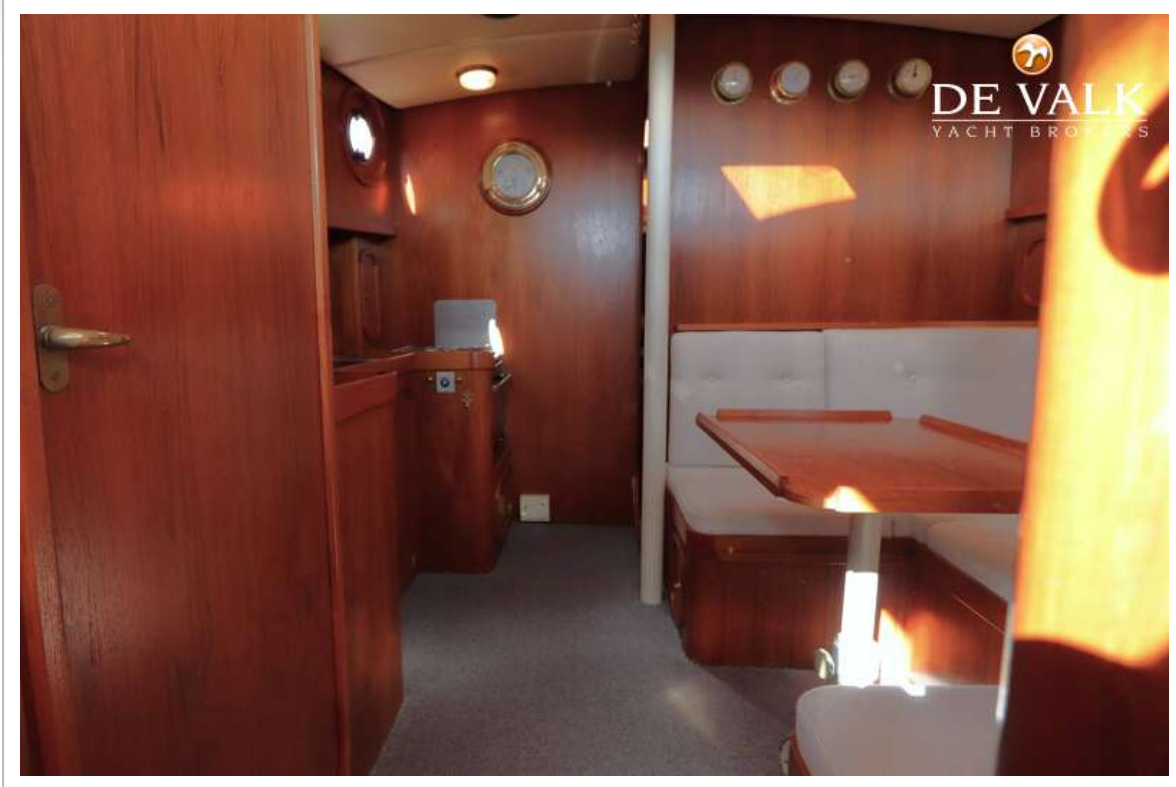
DANISH ROSE 37



DANISH ROSE 37



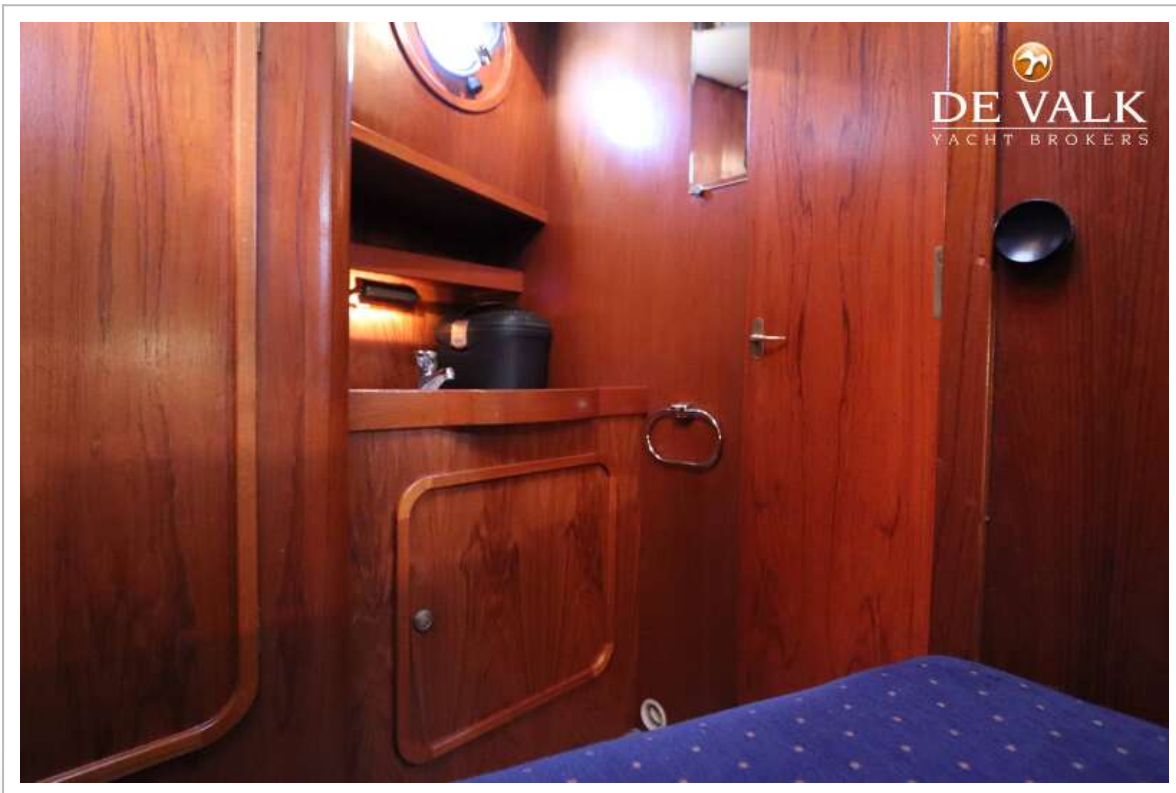
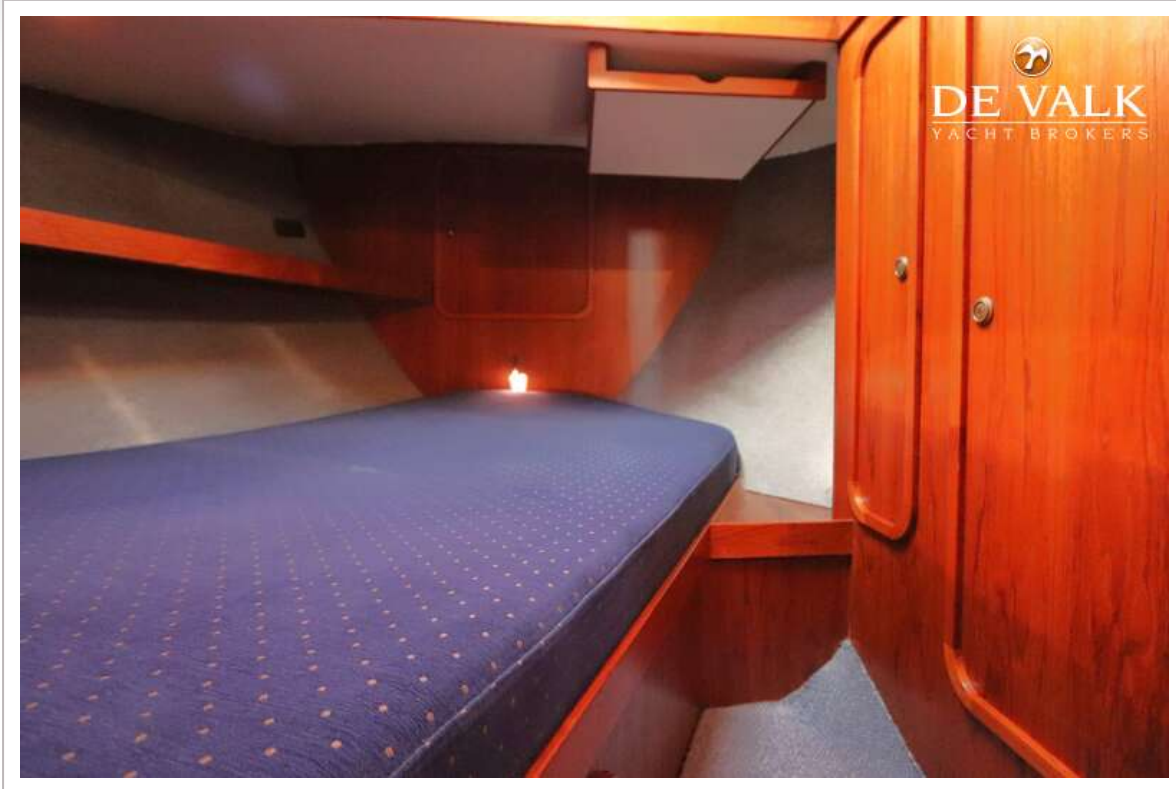
DANISH ROSE 37



DANISH ROSE 37



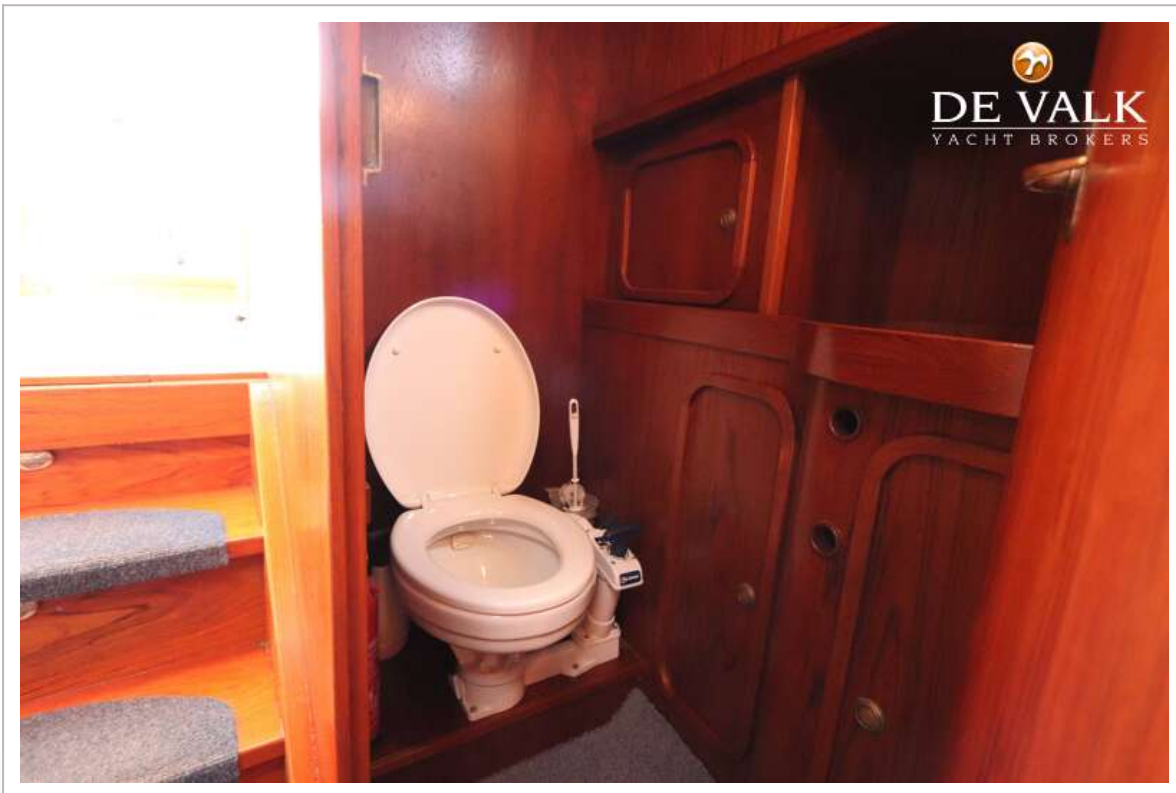
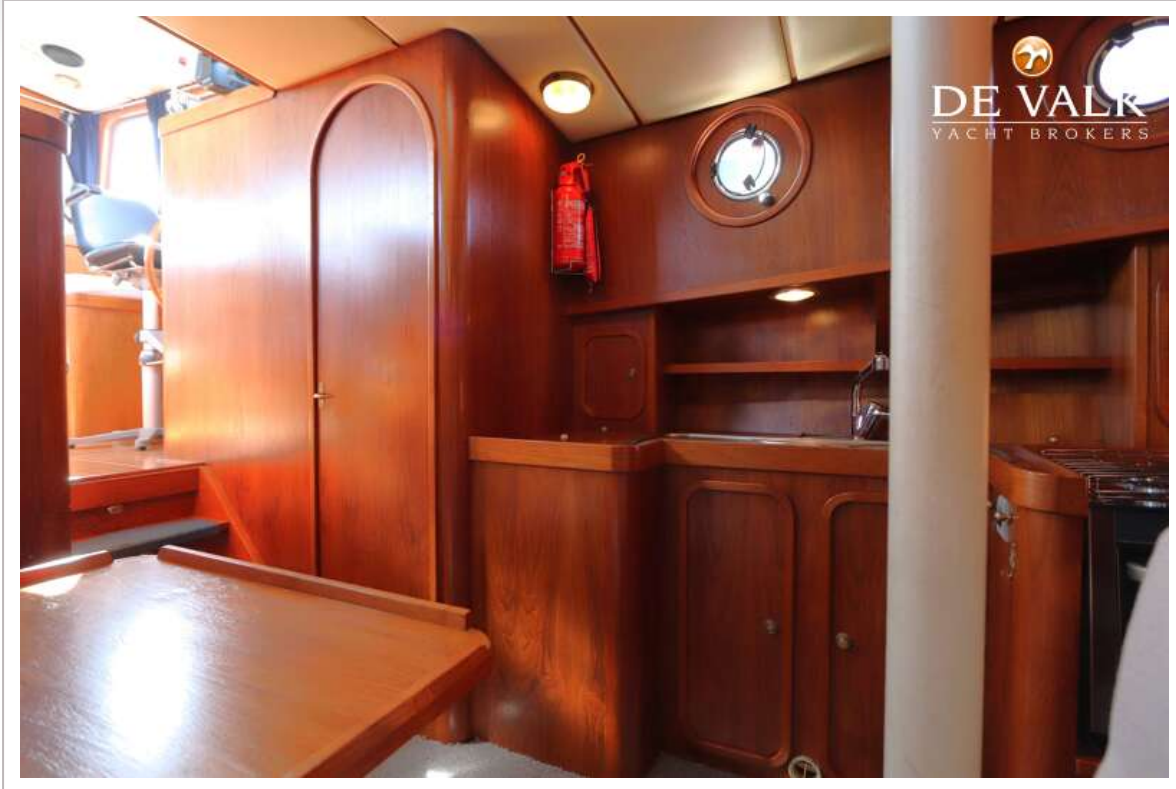
DANISH ROSE 37



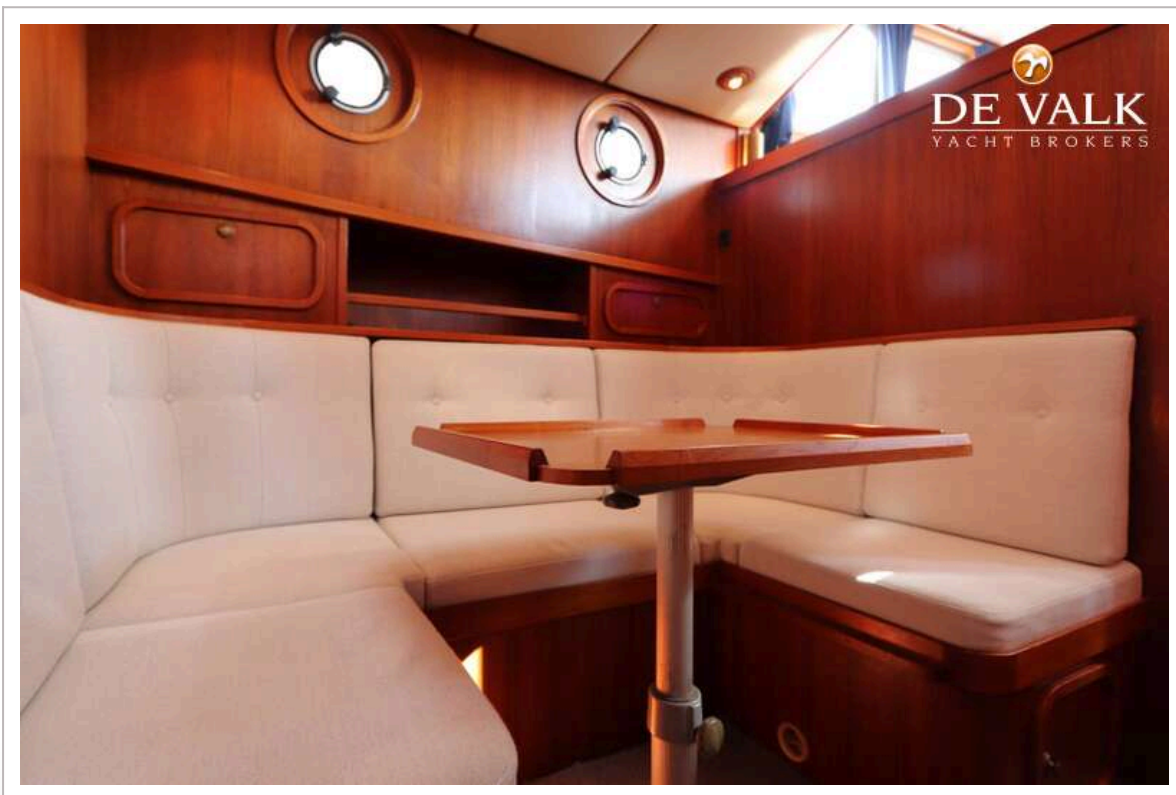
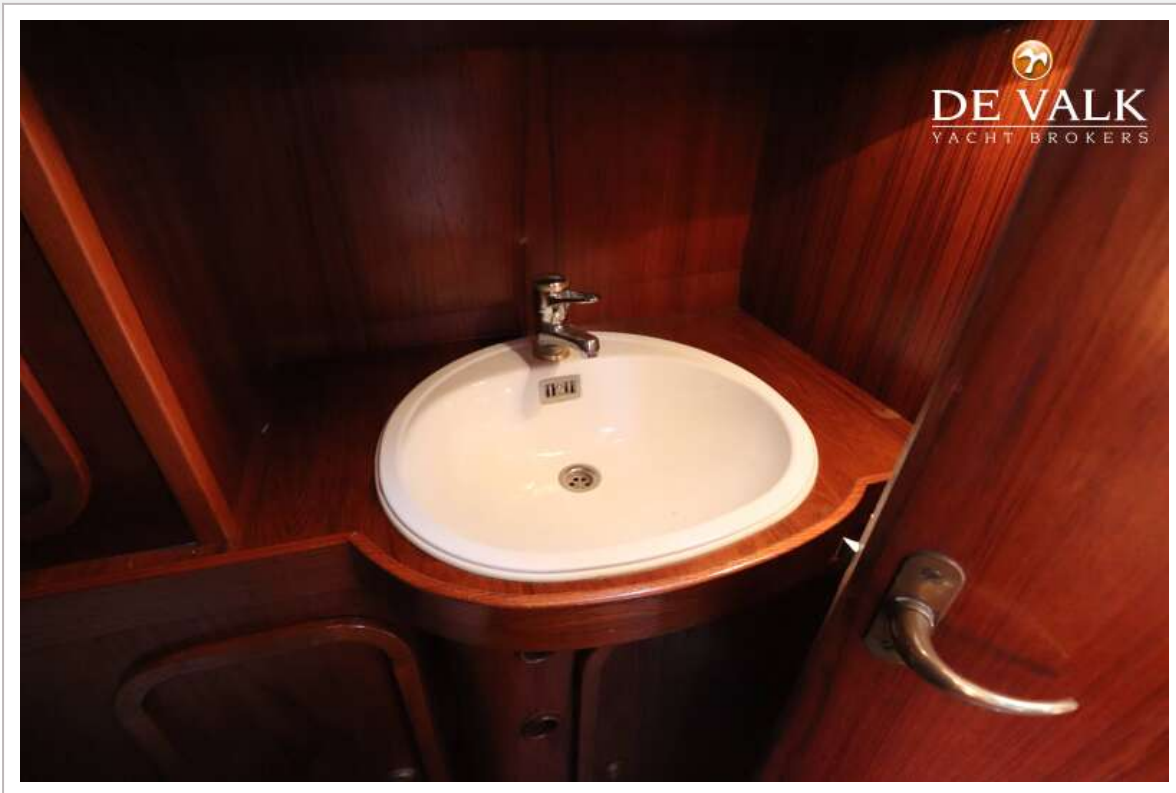
DANISH ROSE 37



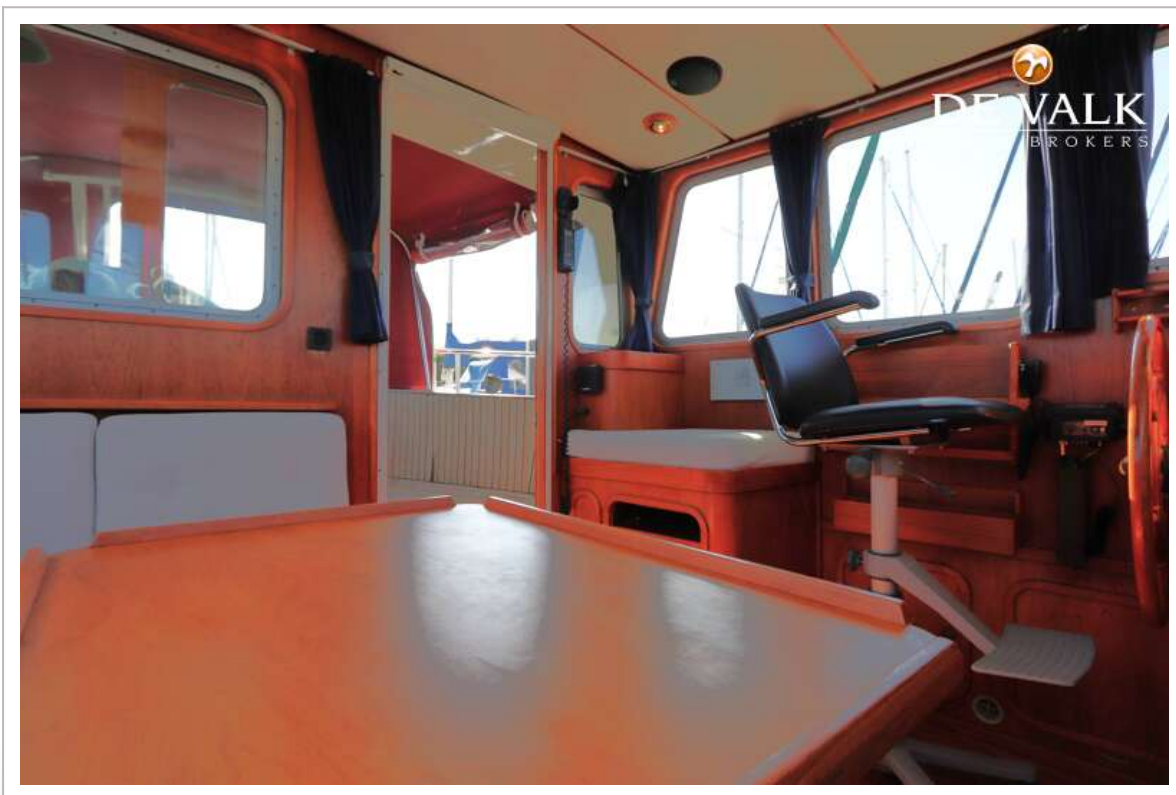
DANISH ROSE 37



DANISH ROSE 37



DANISH ROSE 37



DANISH ROSE 37

