



DE VALK
YACHT BROKERS



COMET 33



DE VALK
YACHT BROKERS

BROKERAGE | CHARTER | BERTHS | FINANCE | INSURANCE | YACHT MANAGEMENT

BROKER'S COMMENTS

Performance cruiser from Italian Comar yachts in good condition. Extra equipped with larger engine 30hp, American cherry interior, Corian Kitchen counter etc.

Henrik Trygg

SPECIFICATIONS

Dimensions	10.30 x 3.29 x 1.90 (m)	Builder	Comar
Built	2007	Cabins	2
Material	GRP	Berths	6
Engine(s)	1 x Lombardini LDW 1003 diesel	Hp/Kw	30.00 (hp), 22.08 (kw)
Asking price	€ 55.000 (VAT Paid)	Lying	

CONTACT

Sales office	De Valk Stockholm	Telephone	+46 70 55 26 545
Address	Stockholm Region Stockholm SE	E-mail	stockholm@devalk.nl

DISCLAIMER

These particulars are given in good faith as supplied but cannot be guaranteed.



GENERAL

Model	COMET 33
Type	sailing yacht
LOA (m)	10,30
LWL (m)	9,99
Beam (m)	3,29
Draft (m)	1,90
Headroom (m)	185,00
Year built	2007
Builder	Comar
Country	Italy
Designer	Sergio Lupoli
Displacement (t)	4,1
Ballast (tonnes)	1350
CE norm	B
Hull material	GRP
Hull colour	White
Keel type	Led keel
Deck material	Insulated with Termantocore, vaccum bagged
Deck finish	Non skid texture
Cockpit deck finish	Teak
Antifouling (year)	2025
Window frame	Aluminium
Deckhatch	2 moonlight
Portholes	Hinged portholes with Mosquito net
Fuel tank (litre)	120
Level indicator (fuel tank)	yes
Freshwater tank (litre)	150
Blackwater tank (litre)	yes
Wheel steering	yes
Emergency tiller	yes



More info on hull

In good condition but there are some small scratches

ACCOMMODATION

Cabins	2
Berths	6
Floor	Teak
Open cockpit	yes
Aft deck	yes
Headroom saloon (m)	1,85
Heating	Eberspracher
Chart table	yes
Aft Cabin	yes
Galley	yes
Countertop	Corian
Sink	2 sinks
Cooker	yes
Oven	yes
Fridge	Isotherm
Hot water system	Quick
Water pressure system	yes
Manual and/or foot pump	Manual foot pump for seawater
Hot water tap	yes
Bed length (m)	1,90
Bathroom	yes
Toilet	yes
Shower	yes

MACHINERY

No of engines	1
Make	Lombardini
Type	LDW 1003



HP	30
kW	22.08
Fuel	diesel
Year installed	2007
Year of overhaul	2025 changed timingbelt, cleand cooling, oil, filters
Maximum speed (kn)	7
Cruising speed (kn)	6
Engine hours	854
Engine cooling system	Freshwater
Drive	sail-drive
Shaft seal	2025
Engine controls	yes
Gearbox	yes
Propeller type	Folding
Propeller blades	2
Manual bilge pump	In engine room
Electric bilge pump	In shower and cabin
Electrical installation	From factory
Generator	yes
Batteries	yes
Start battery	1 76ah 2025
Service battery	2 100ah Agm 2025
Battery charger	Quick
Solar panel	65w 2025
Shorepower	yes

NAVIGATION

Compass	yes
Depth sounder/log	Raymarine St 60
Windset	Raymarine St 60
VHF	Simrad RD 68



Autopilot	yes
Rudder angle indicator	yes
Plotter/GPS	Simrad Go7
Navigation lights	yes

EQUIPMENT

Sprayhood	2025
Bathing platform	yes
Bow ladder	yes
Deck shower	yes
Anchor	10 kg Stainless Bruce
Windlass	Electric
Safety harness	yes
Fenders	yes
Mooring lines	yes
Spare parts	yes
Radio	Carplay
Cockpit speakers	2
Speakers in salon	2
Fire extinguisher	yes

RIGGING

Rigging	yes
Standing rigging	Wire
Brand mast	VMG Soromap
Material mast	Aluminium
Spreaders	2
Keel stepped mast	yes
Mainsail	Dacron 4 battens
Mainsail cover	Lazybag 2025
Genoa	Furling Dacron



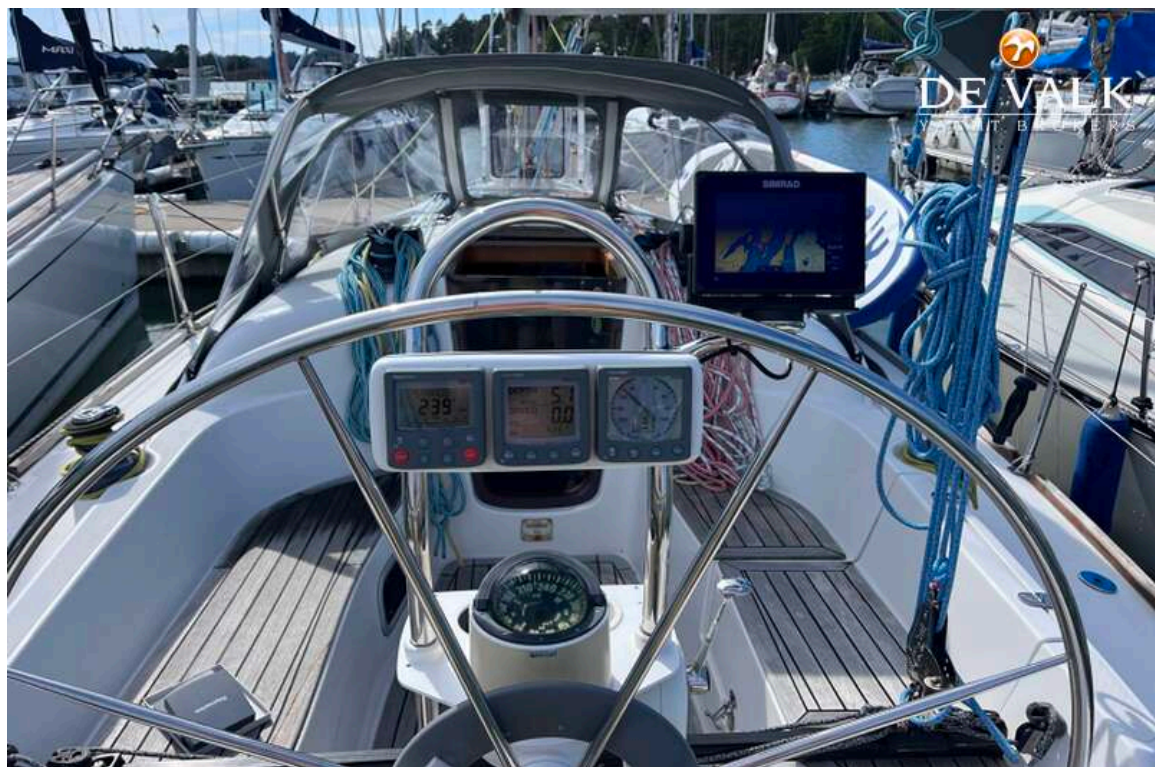
Genoa furler	Bamar C1
Reefing System	2 reef
Boomvang	Harken
Primary sheet winch	2 harken 40
Halyard winches	2 harken 32



COMET 33



COMET 33



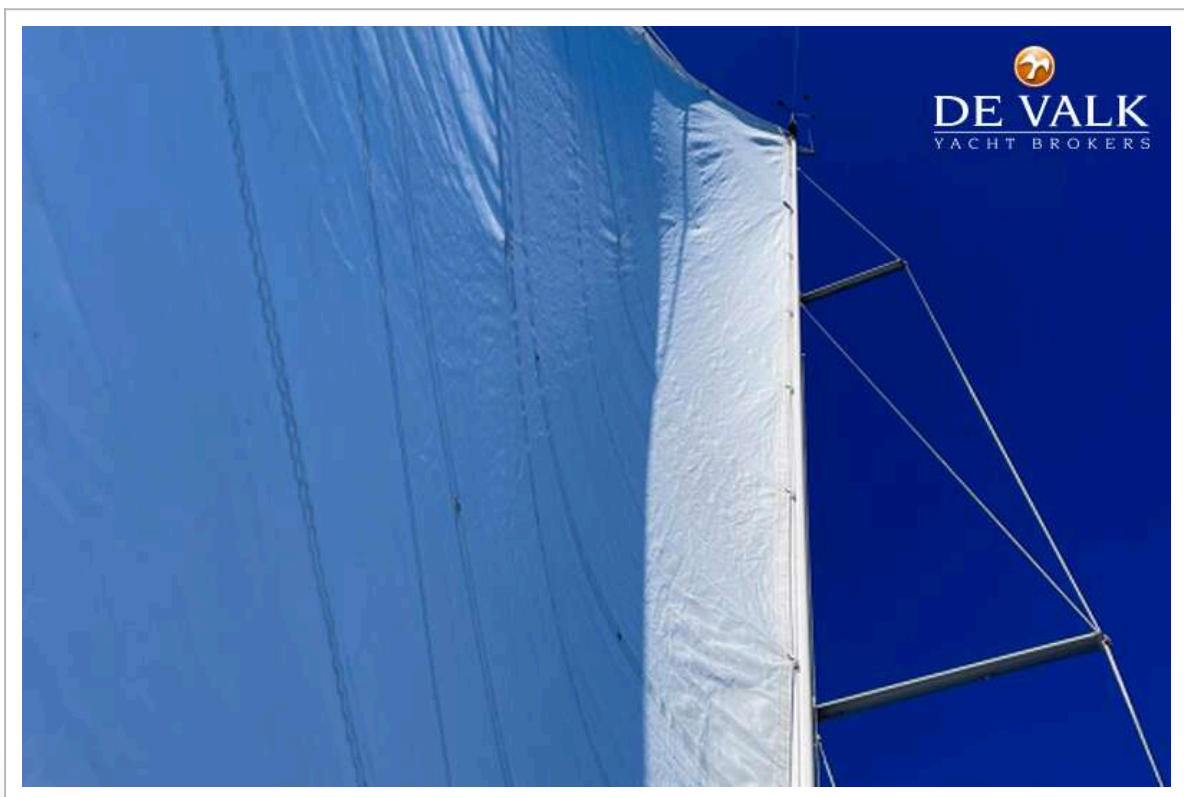
COMET 33



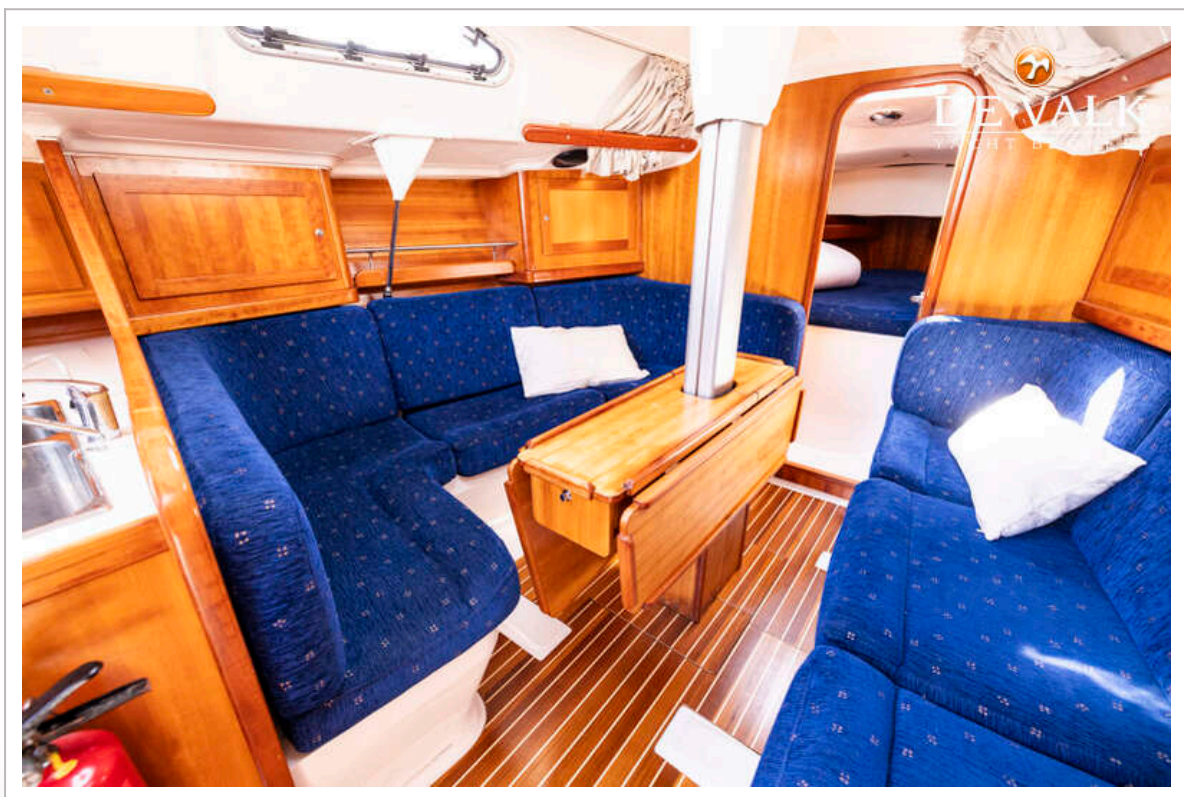
COMET 33



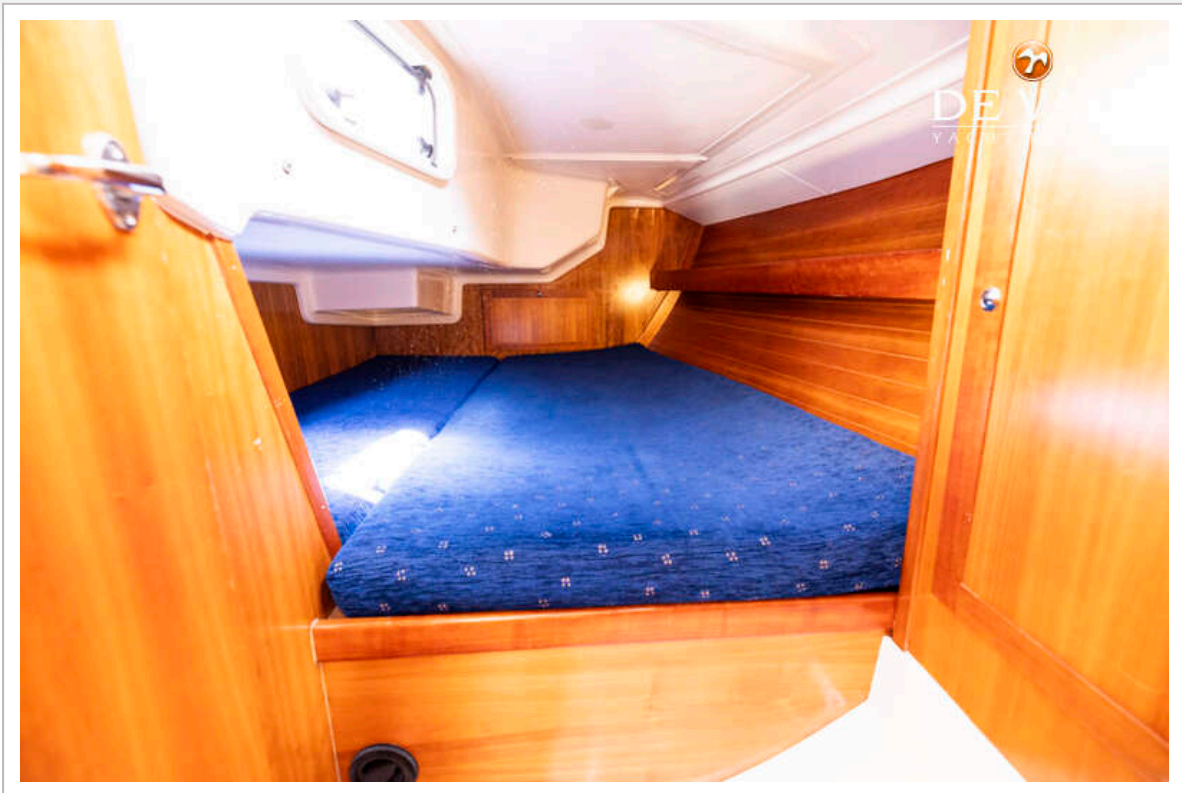




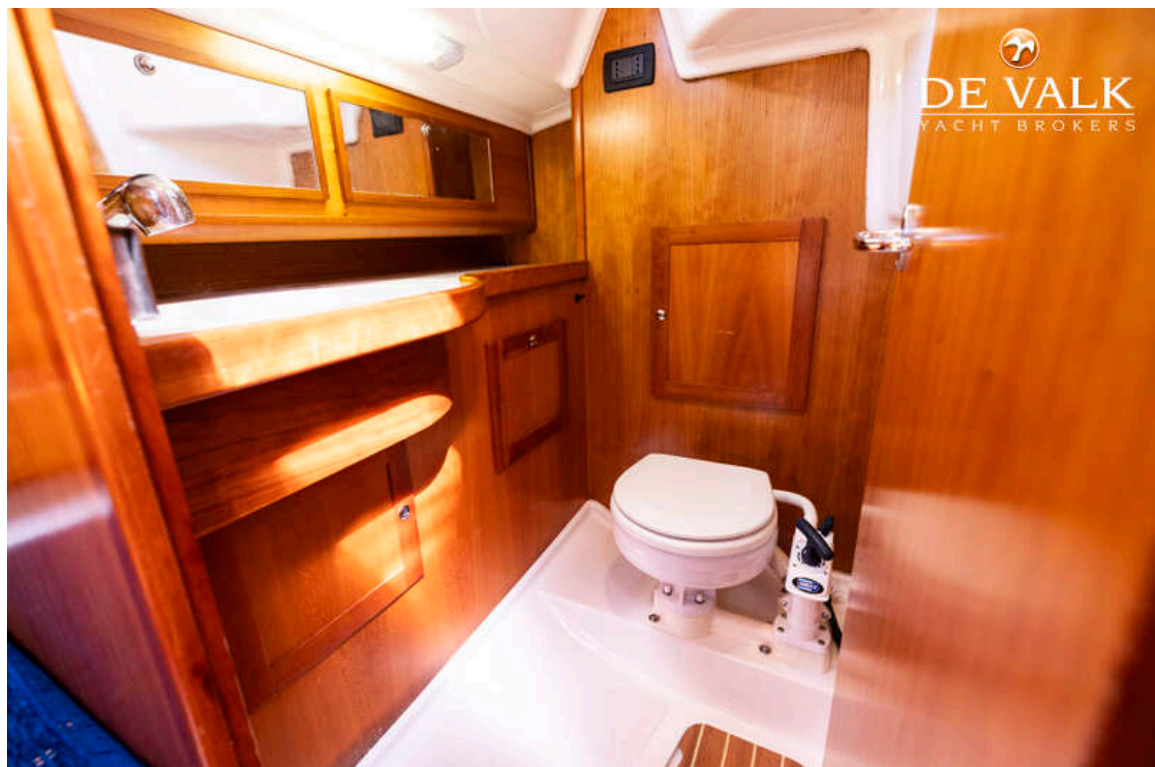
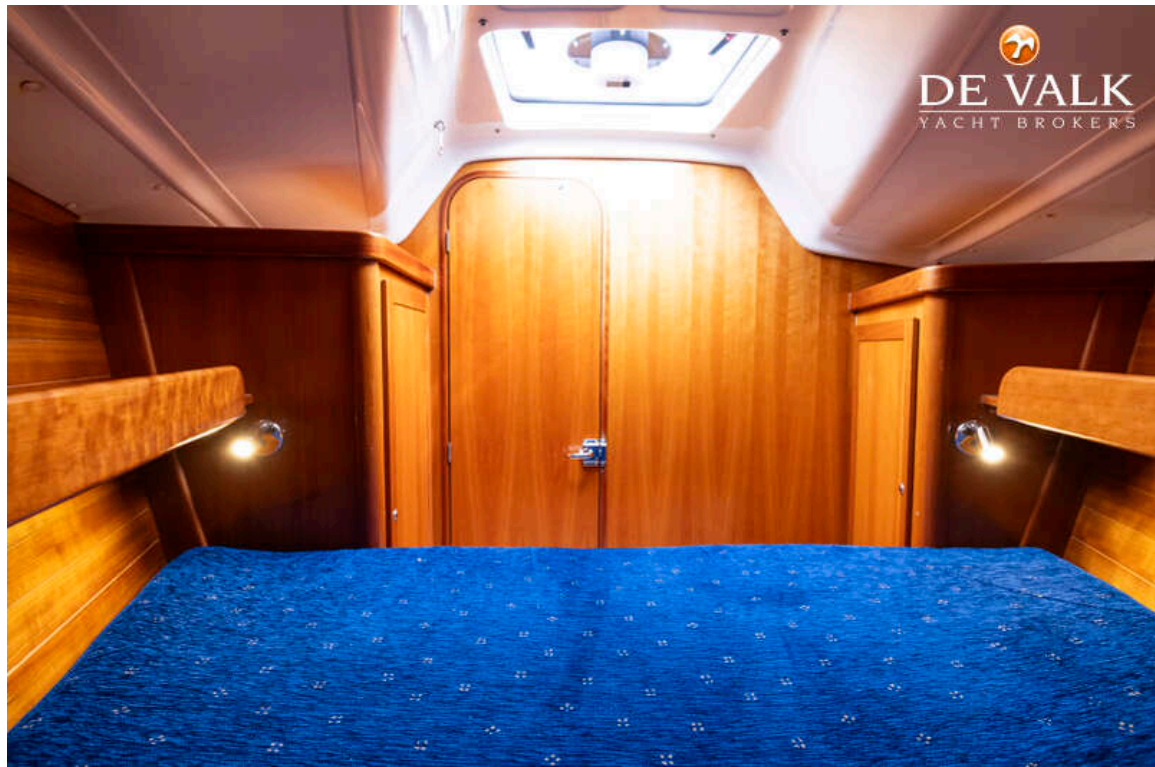
COMET 33



COMET 33



COMET 33



COMET 33

