



VRIPACK TRAWLER 1950



VRIPACK TRAWLER 1950

BROKER'S COMMENTS

This Vripack Aluminium Long Range round bilge Trawler is ideal for both inland and open water and long stays on board or living on board. It has two 280 Hp engines and a home delivery service/ generator 20 Kw, three cabins and six berths, double glazing and Kabola central heating. In short, a very professionally built ship by Spiro Shipyard in Enkhuizen.

Peter Spruyt

SPECIFICATIONS

Dimensions	19.50 x 5.00 x 1.45 (m)	Builder	Spiro Shipyards
Built	1992	Cabins	3
Material	Aluminium	Berths	6
Engine(s)	1 x Vovo-Penta TAMD 61A diesel	Hp/Kw	306.00 (hp), 225.22 (kw)
Asking price	€ 370.000 (VAT Paid)	Lying	

CONTACT

Sales office	De Valk Sneek	Telephone	+31 (0)515 42 80 30
Address	Zwolsmanweg 7 8606 KC Sneek NL	E-mail	sneek@devalk.nl

DISCLAIMER

These particulars are given in good faith as supplied but cannot be guaranteed.



VRIPACK TRAWLER 1950

GENERAL

Model	VRIPACK TRAWLER 1950
Type	motor yacht
LOA (m)	19,50
Beam (m)	5,00
Draft (m)	1,45
Air draft min (m)	5,30
Headroom (m)	2,00
Year built	1992
Builder	Spiro Shipyards
Country	The Netherlands
Designer	Vripack Sneek
Displacement (t)	38
CE norm	NA
Hull material	aluminium
Hull colour	blue
Hull shape	round-bilged
Keel type	fin keel
Superstructure material	aluminium
Rubbing strake	stainless steel
Deck material	aluminium
Deck finish	non-skid paint
Superstructure deck finish	paint
Cockpit deck finish	paint
Window frame	aluminium
Window material	double glazing
Portholes	aluminium
Flybridge	yes
Mast can be lowered	hydraulic
Fuel tank (litre)	steel Ca. 5000 Ltr
Fuel tank 2 (litre)	yes



VRIPACK TRAWLER 1950

Freshwater tank (litre)	stainless steel Ca. 3000 Ltr
Level indicator (freshwater)	yes
Greywater tank (litre)	polyethylene Ca. 500 Ltr
Level indicator (greywater)	yes
Wheel steering	hydraulic
Inside helm position	yes
Outside helm position	electric Remote Control
Tiller	yes
Emergency tiller	yes
More info on paintwork	yes

ACCOMMODATION

Cabins	3
Berths	6
Interior	teak
Floor	teak and holly
Aft deck	yes
Saloon	yes
Headroom saloon (m)	1,95 Mtr
Heating	central heating Kabola
Dinette	yes
Dinette to convert into berth	2 x
Opening door to cockpit	yes
Opening door to aft deck	yes
Galley	yes
Countertop	Duropal
Sink	stainless steel
Cooker	induction 4x
Microwave	Bosch Gourmet 3201
Fridge	Liebherr 80 Ltr
Freezer	Liebherr



VRIPACK TRAWLER 1950

Hot water system	220V + engine Boiler 60 Ltr/ Kabola
Water pressure system	electrical
Crockery	yes
Owners cabin	French bed
Bed length (m)	2.00 x 1.40 Mtr
Wardrobe	hanging and shelves
Bathroom	en suite
Toilet	en suite
Toilet system	electric
Wash basin	in the bathroom
Guest cabin 1	double bed + single bed
Bed length (m)	2.00 x 090 Mtr
Wardrobe	hanging and shelves
Toilet	en suite
Toilet system	electric
Wash basin	at the toilet
Guest cabin 2	double bed + single bed
Bed length (m)	2.00 x 0.90 Mtr
Wardrobe	hanging and shelves
Toilet system	electric
Wash basin	at the toilet

MACHINERY

No of engines	1
Make	Vovo-Penta
Type	TAMD 61A
HP	306
kW	225.22
Fuel	diesel
Engine hours	3000
Engine cooling system	freshwater heat exchanger



VRIPACK TRAWLER 1950

Drive	shaft
Engine controls	electrical
Gearbox	hydraulic
Homer	Westerbeke 20 Kw + auxiliary drive
Bowthruster	hydraulic 18 Hp
Gearbox	hydraulic
Exhaust	watercooled
Propeller type	fixed
Propeller shaft material	stainless steel
Electric bilge pump	yes
Electrical installation	yes
Generator	wet exhaust Westerbeke 20 Kw
Batteries	yes
Start battery	2 x 140 Amp
Service battery	12 x 2 volt
Generator battery	1 x 140 Amp
Battery charger	Mastervolt Mass 24/ 75 Amp
Inverter	Mastervolt Mass 24/ 4500 W
Shorepower	with cable
Stabilizers	fin Sea Rock

NAVIGATION

Compass	Liquid Plath
Depth sounder	VDO
Depth sounder/log	VDO
VHF	Debeg 6348
Autopilot	C.Plath Navipilot v
Radar	Furuno 1935
GPS	NVT
Plotter	NVT
Navigation lights	yes



VRIPACK TRAWLER 1950

Searchlight	yes
Loudhailer	yes

EQUIPMENT

Anchor	CQR Plough
Anchor chain	yes
Windlass	electrical Maxwell
Dinghy	Zodiac Pro 11 4.20
Outboard	Yamaha 40 Hp
Deck crane	Comeup DV4500I
Sea railing	stainless steel
Wiper	4 x
Horn	electric
Fenders	yes
Mooring lines	yes
TV	Samsung
Cockpit speakers	yes
Speakers in salon	yes
Fire extinguisher	yes
Extinguisher in engine room	yes



VRIPACK TRAWLER 1950



VRIPACK TRAWLER 1950



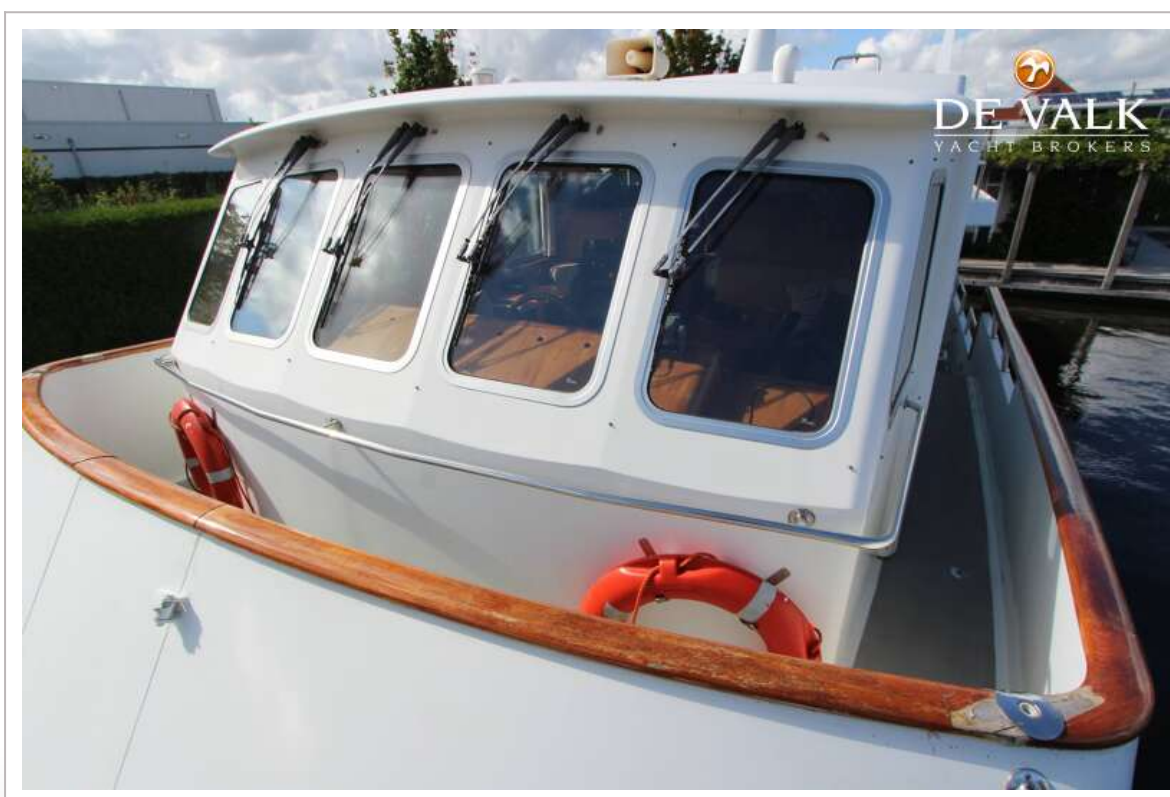
VRIPACK TRAWLER 1950



VRIPACK TRAWLER 1950



VRIPACK TRAWLER 1950



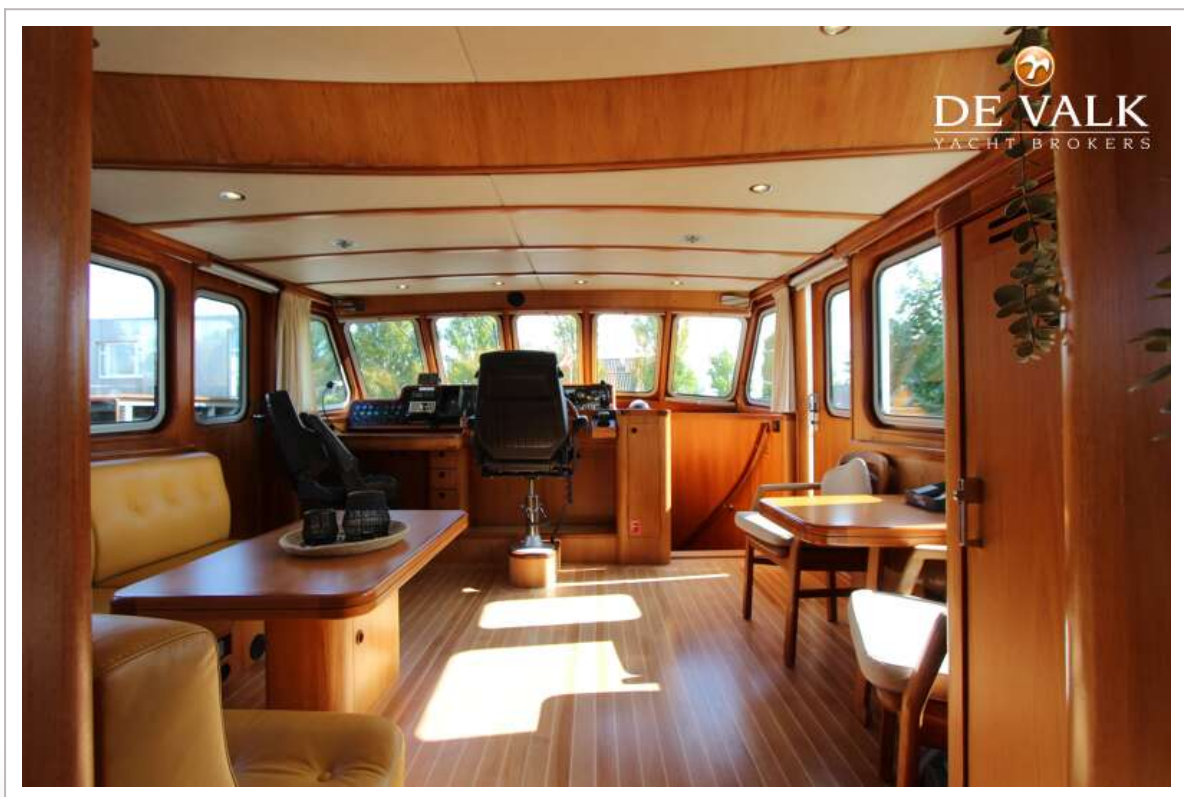
VRIPACK TRAWLER 1950



VRIPACK TRAWLER 1950



VRIPACK TRAWLER 1950



VRIPACK TRAWLER 1950



VRIPACK TRAWLER 1950



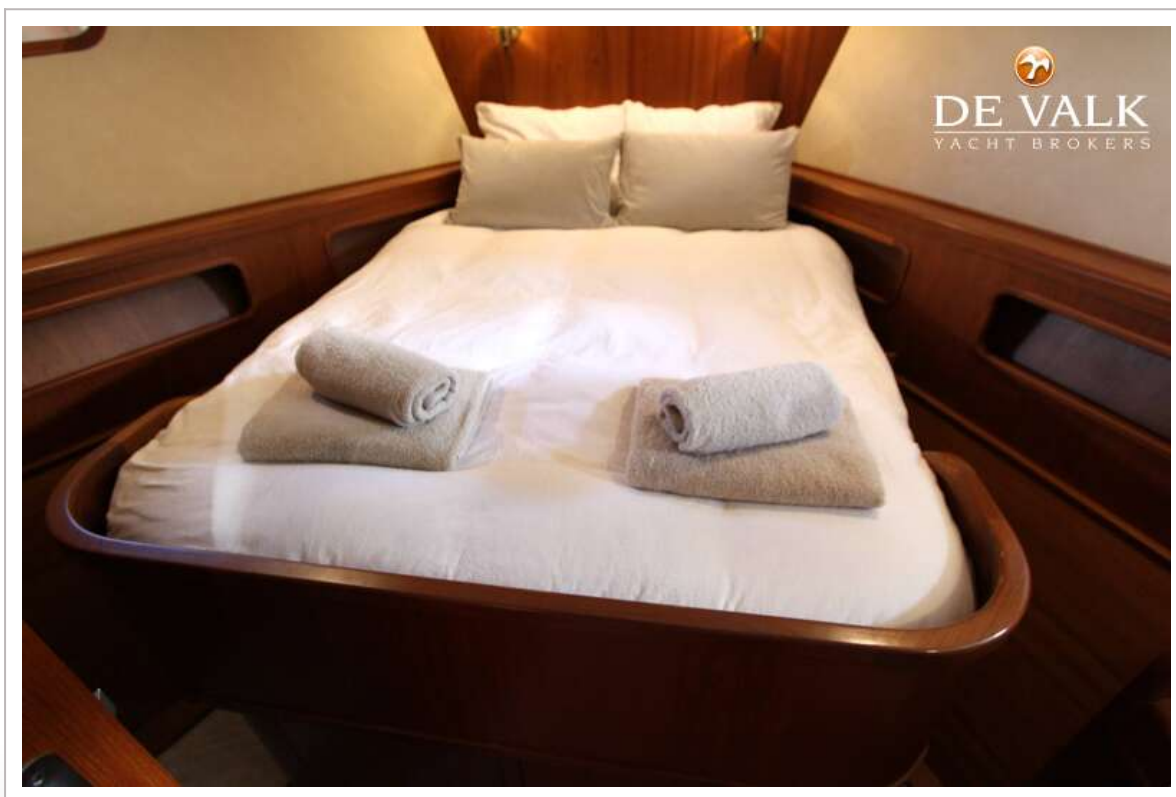
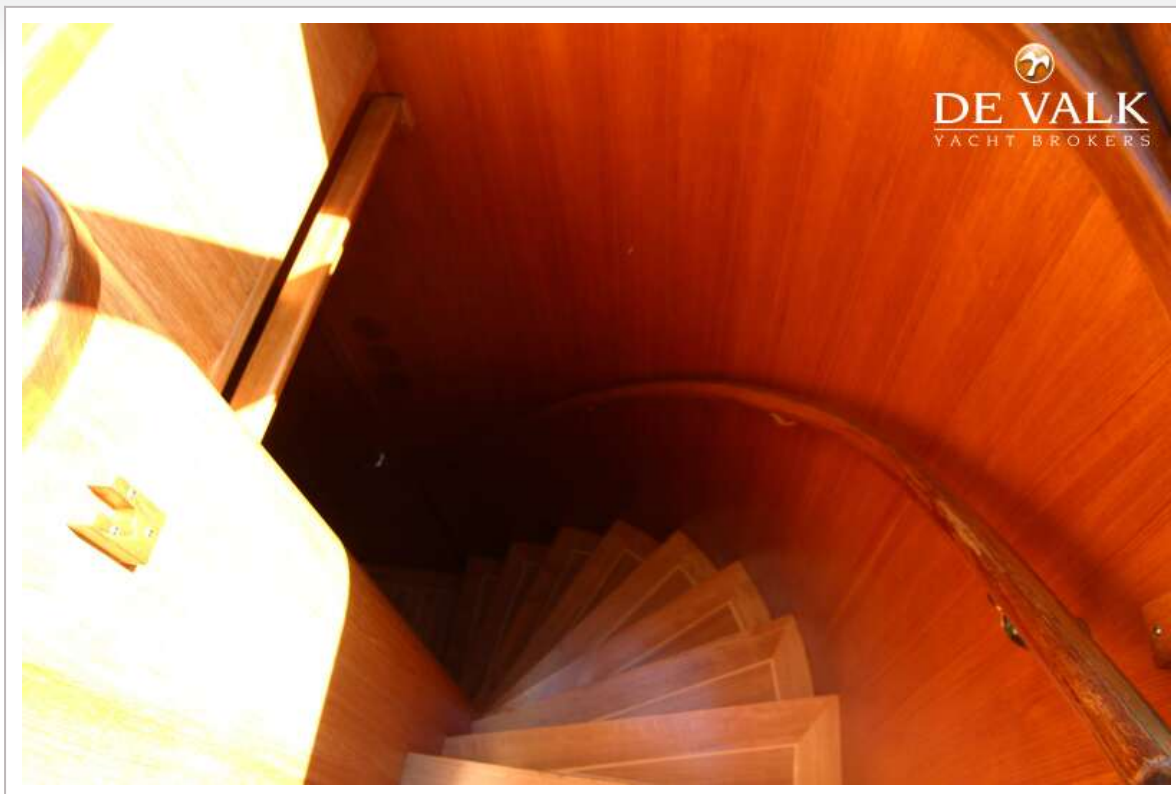
VRIPACK TRAWLER 1950



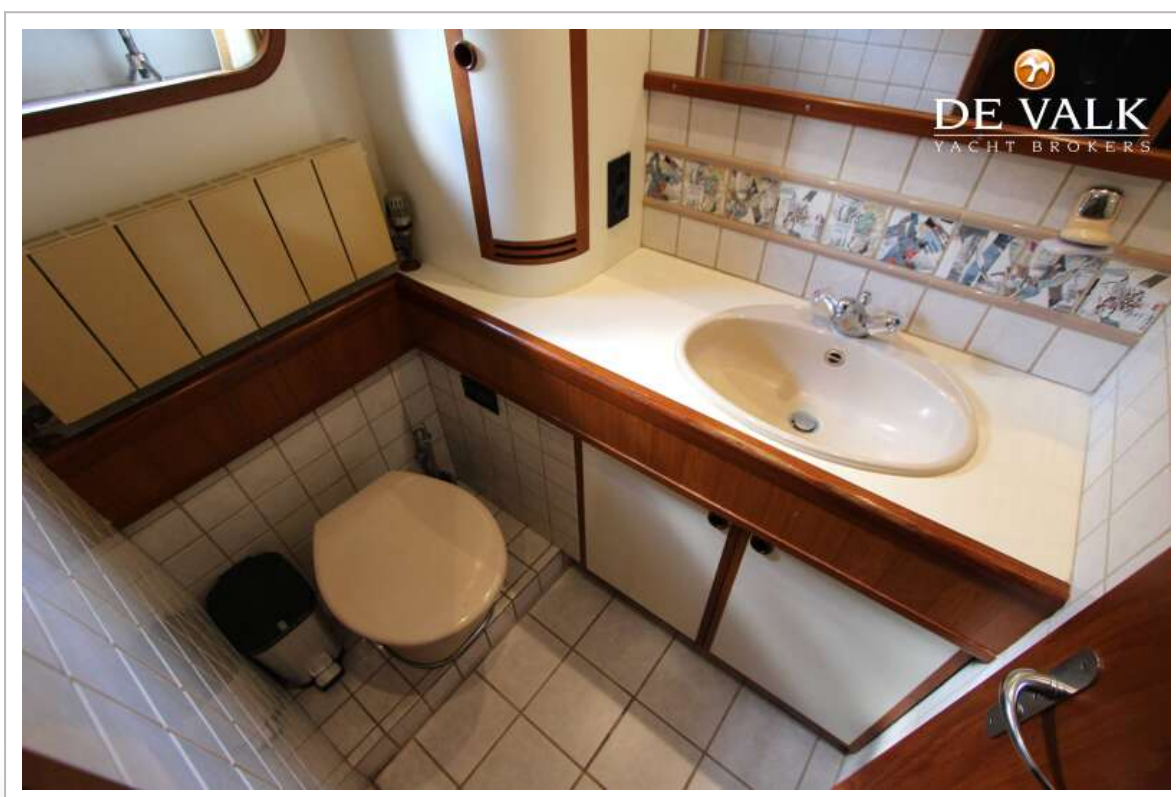
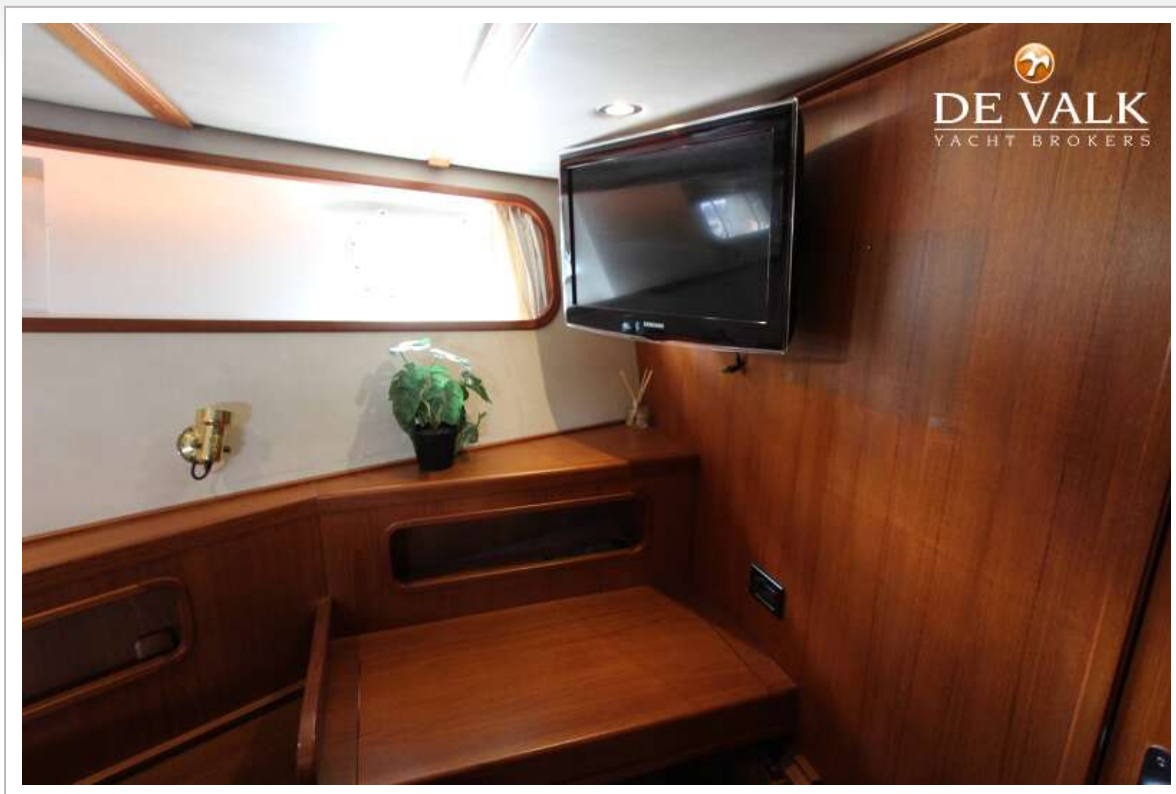
VRIPACK TRAWLER 1950



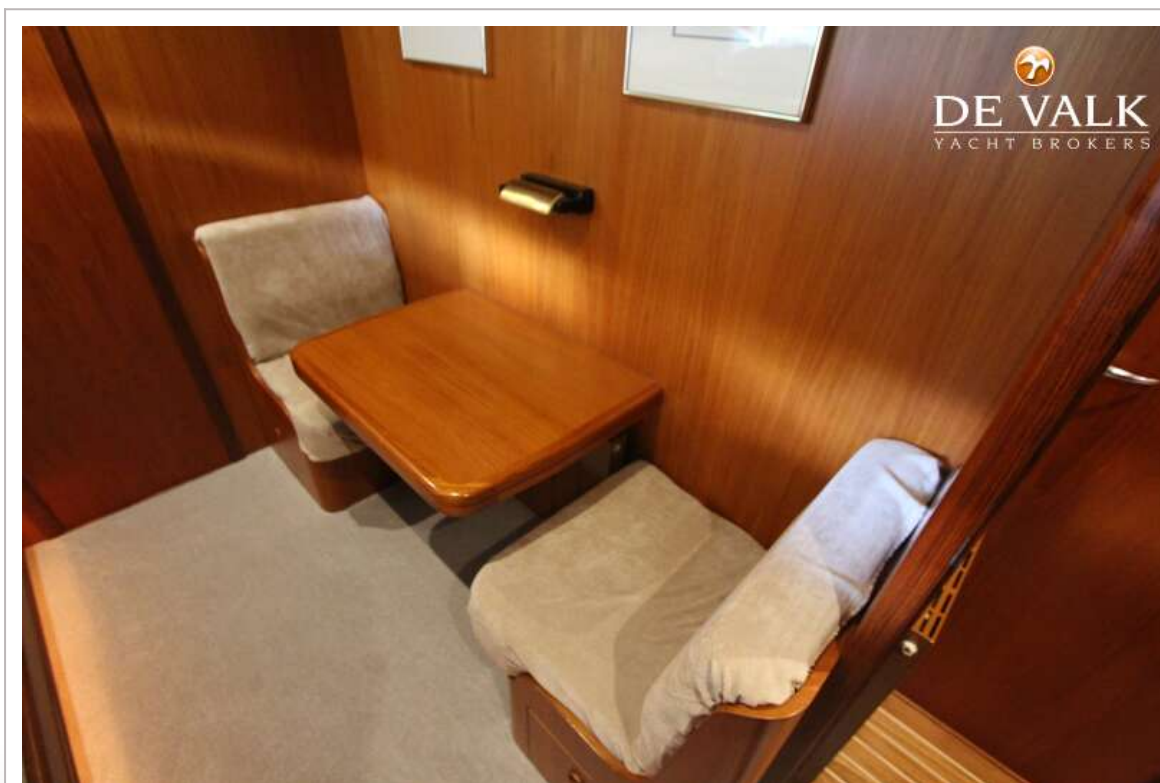
VRIPACK TRAWLER 1950



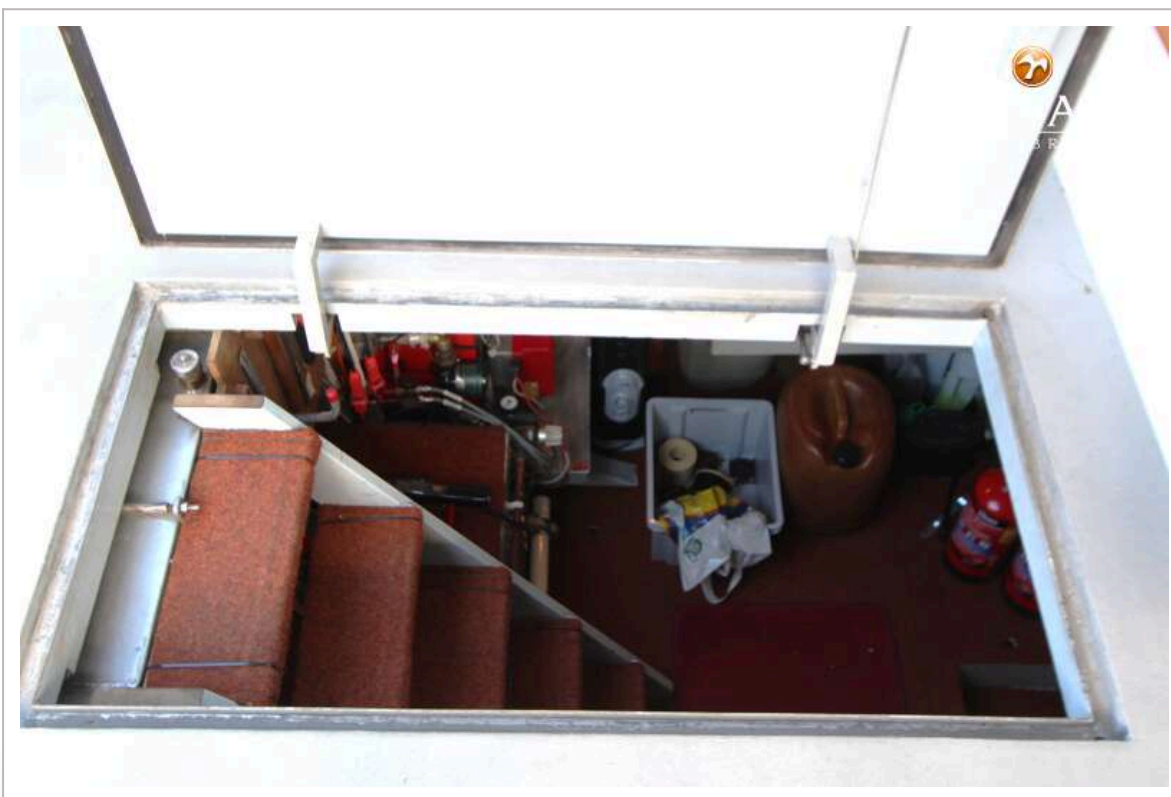
VRIPACK TRAWLER 1950



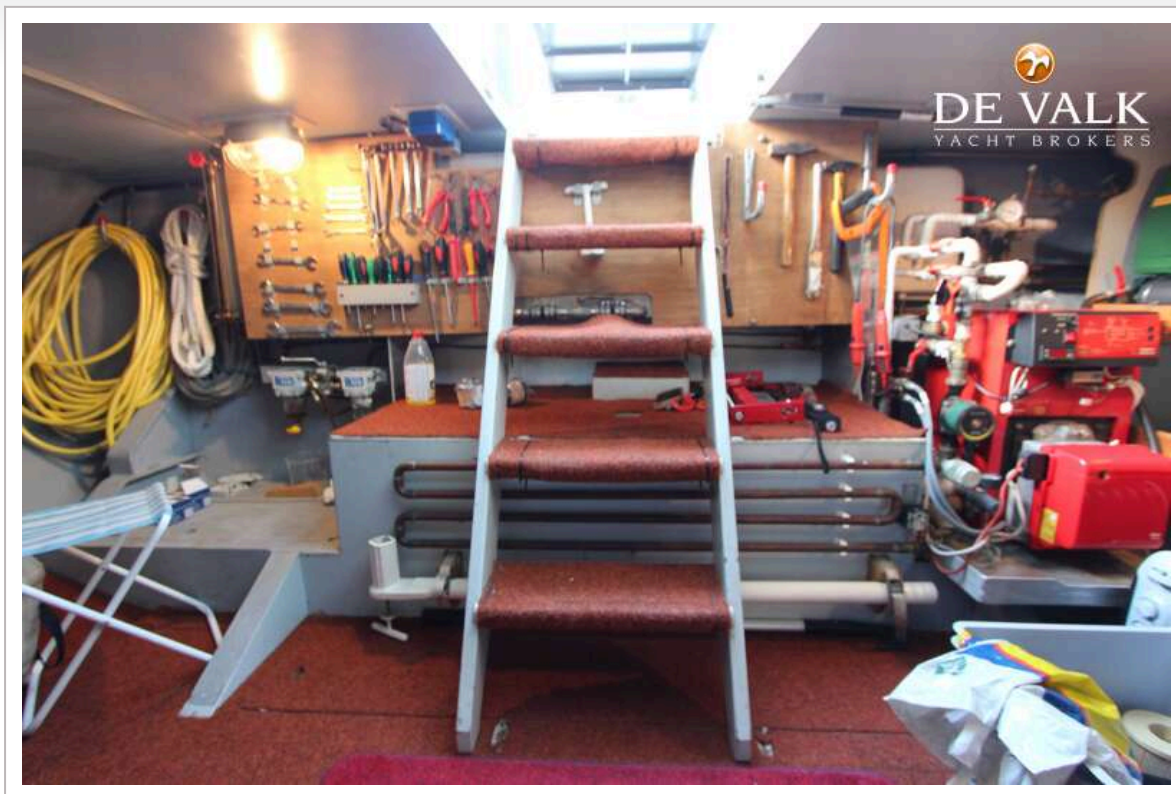
VRIPACK TRAWLER 1950



VRIPACK TRAWLER 1950



VRIPACK TRAWLER 1950



VRIPACK TRAWLER 1950



VRIPACK TRAWLER 1950

