



DE VALK  
YACHT BROKERS



SIGMA 38



DE VALK  
YACHT BROKERS

BROKERAGE | CHARTER | BERTHS | FINANCE | INSURANCE | YACHT MANAGEMENT

## BROKER'S COMMENTS

Sigma 38 (1989) is a classic performance cruiser–racer designed by David Thomas and built by Marine Projects in the UK. It features a fin keel, spade rudder, and a powerful fractional sloop rig, making it fast and responsive under sail. With a solid GRP (fiberglass) hull, spacious cockpit, and practical interior layout for up to eight berths, the Sigma 38 was created as a one-design offshore racing yacht following the success of the 1985–86 Whitbread Round the World Race. Its reputation for seaworthiness, durability, and performance has made it a sought-after classic among offshore sailors.

*Sofia Iliia-Salvanou*

## SPECIFICATIONS

<b>Dimensions</b>	11.58 x 3.75 x 2.03 (m)	<b>Builder</b>	Marine Projects
<b>Built</b>	1989	<b>Cabins</b>	3
<b>Material</b>	GRP	<b>Berths</b>	6
<b>Engine(s)</b>	1 x VOLVO PENTA D1 30 diesel	<b>Hp/Kw</b>	30.00 (hp), 22.08 (kw)
<b>Asking price</b>	€ 52.000 (VAT Not paid)	<b>Lying</b>	elsewhere / Not at sales office

## CONTACT

<b>Sales office</b>	De Valk Corfu	<b>Telephone</b>	(+30) 266 111 8095
<b>Address</b>	New Port of Corfu, near Gouvia Marina 490 83 Corfu GR	<b>E-mail</b>	corfu@devalk.nl

## DISCLAIMER

These particulars are given in good faith as supplied but cannot be guaranteed.



## GENERAL

Model	SIGMA 38
Type	sailing yacht
LOA (m)	11,58
Beam (m)	3,75
Draft (m)	2,03
Year built	1989
Builder	Marine Projects
Country	United Kingdom
Designer	David Thomas
Displacement (t)	6,6
Ballast (tonnes)	2,6
CE norm	A
Hull material	GRP
Hull colour	white
Superstructure material	GRP
Rubbing strake	rubber
Deck material	GRP
Deck finish	non-skid moulded in
Superstructure deck finish	non-skid moulded in
Cockpit deck finish	teak
Antifouling (year)	Copper coat 2022 (5 layers of primer after being scraped)
Deckhatch	yes
Portholes	yes
Fuel tank (litre)	90 Lt
Fuel tank 2 (litre)	Spare tanks: 2x 10 Lt and 3x 5Lt
Freshwater tank (litre)	2x 60 Lt (extra Jabsco water filter) New pamp 2025. Renewal pipe
Wheel steering	yes
Outside helm position	yes
Emergency tiller	yes



## ACCOMMODATION

Cabins	3
Berths	6
Saloon	yes
Heating	yes
Dinette	yes
Galley	yes
Countertop	yes
Sink	yes
Cooker	diesel
Oven	yes
Fridge	yes
Hot water system	New boiler 20 Lt
Crockery	For 6 persons
Owners cabin	double bed
Toilet	separate
Guest cabin 1	double bed
Toilet	separate

## MACHINERY

No of engines	1
Make	VOLVO PENTA
Type	D1 30
HP	30
kW	22.08
Fuel	diesel
Bowthruster	New 2023
Propeller type	folding
Electrical installation	Complete rewiring of all electrical systems
Start battery	New 2024
Service battery	New Lithium 2023



Battery charger	yes
Shorepower	with cable

## NAVIGATION

Compass	yes
Depth sounder	yes
Windset	yes
VHF	yes
Autopilot	yes
Plotter/GPS	RAYMARINE
Electronis chart(s)	yes
Navigation lights	yes

## EQUIPMENT

Sprayhood	New
Bimini	New
Windlass	electrical
Life raft	yes
Lifejackets	X 5
Safety harness	yes
Radio-cd player	yes

## RIGGING

Rigging	yes
Standing rigging	yes
Material mast	aluminium
Mainsail	X 2 (Lazy jack new)
Genoa	X 2 (one brand new & one that needs repairs)
Spinnaker	yes
Stormjib	yes



**Halyard winches**

**Multifunctional winches**

X1 electric

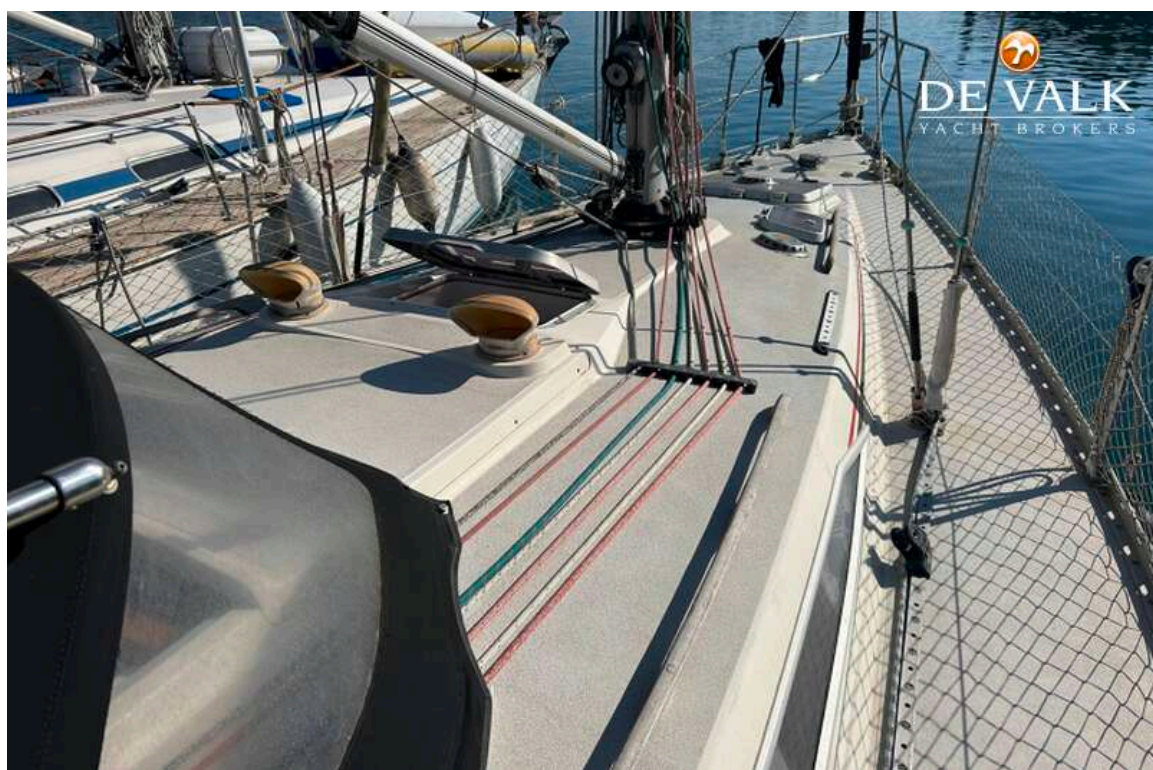
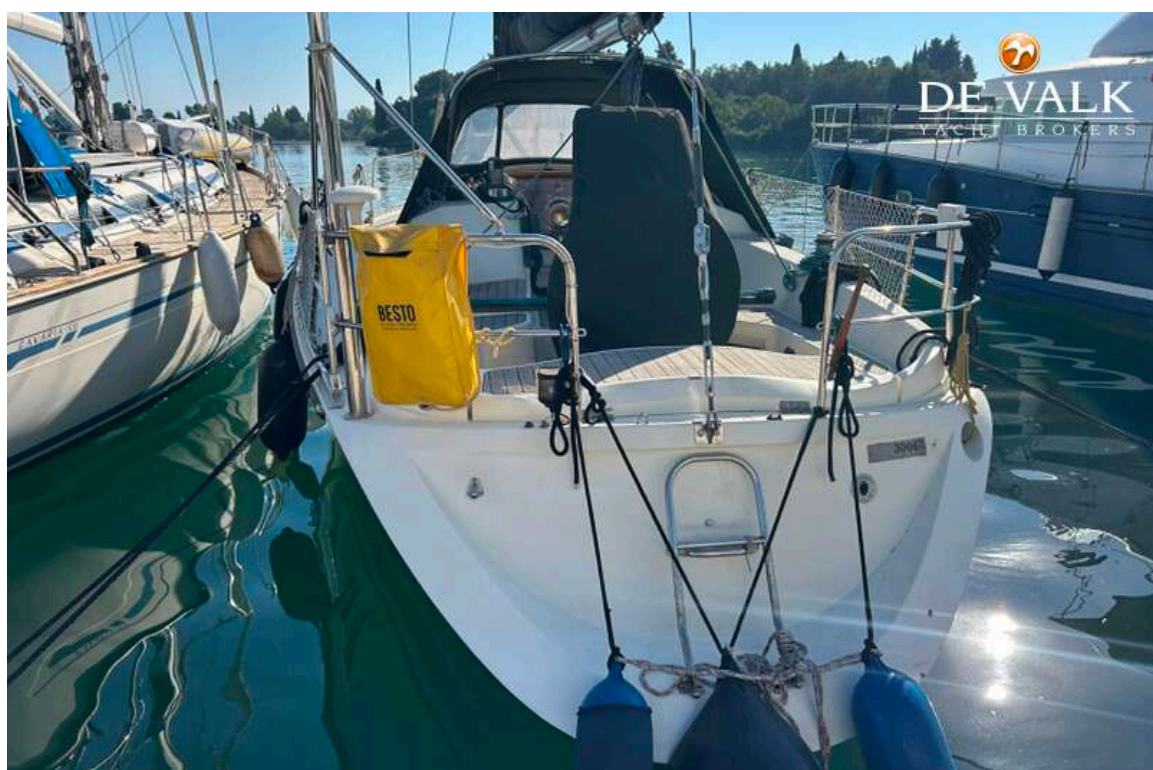
Manual x 5



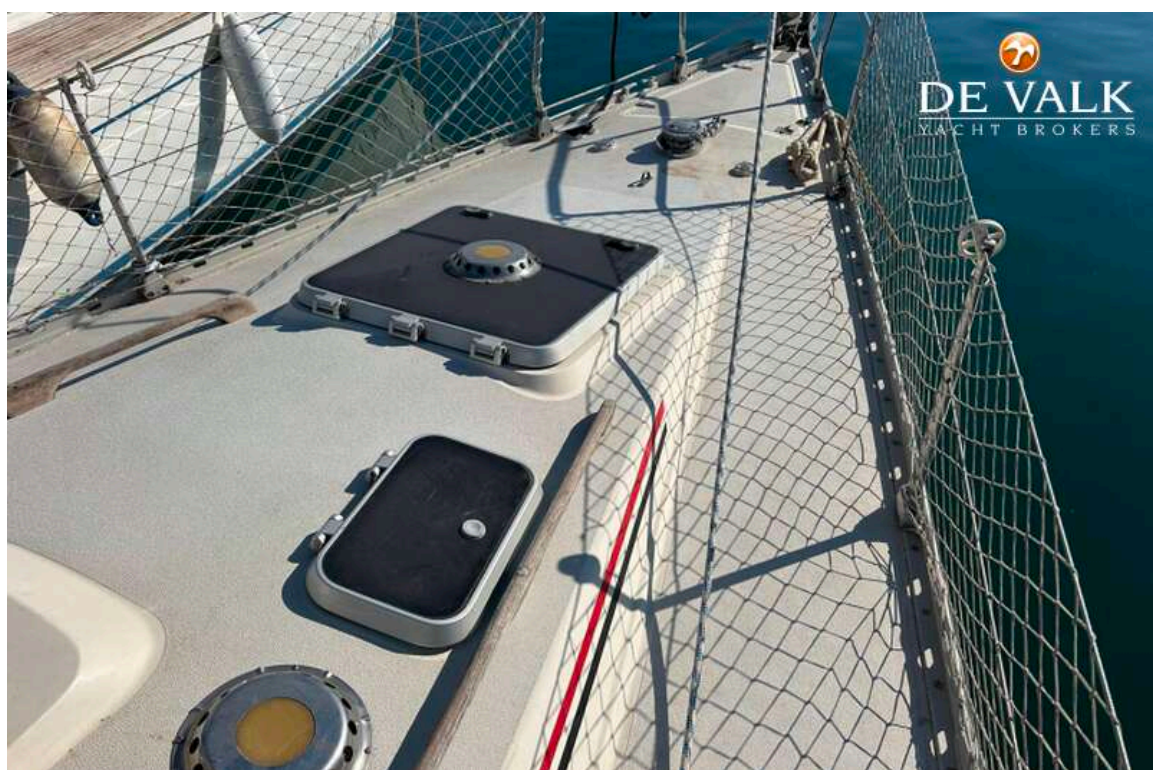




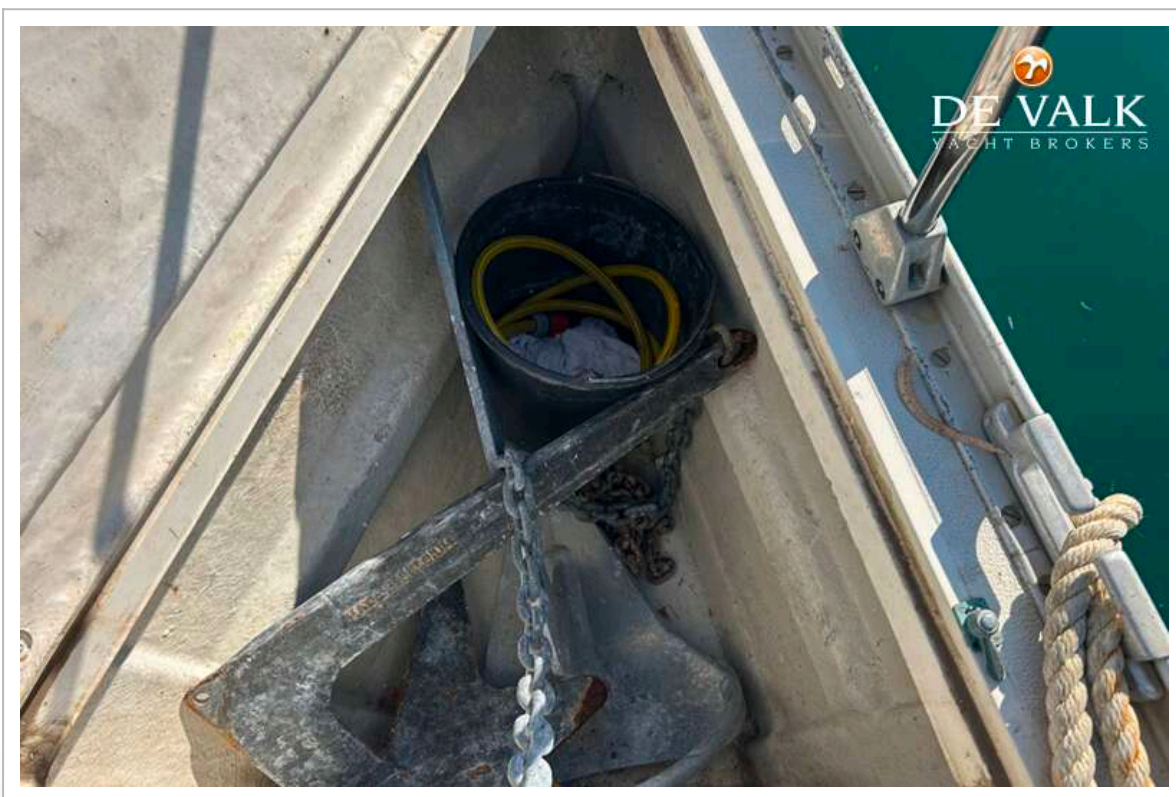




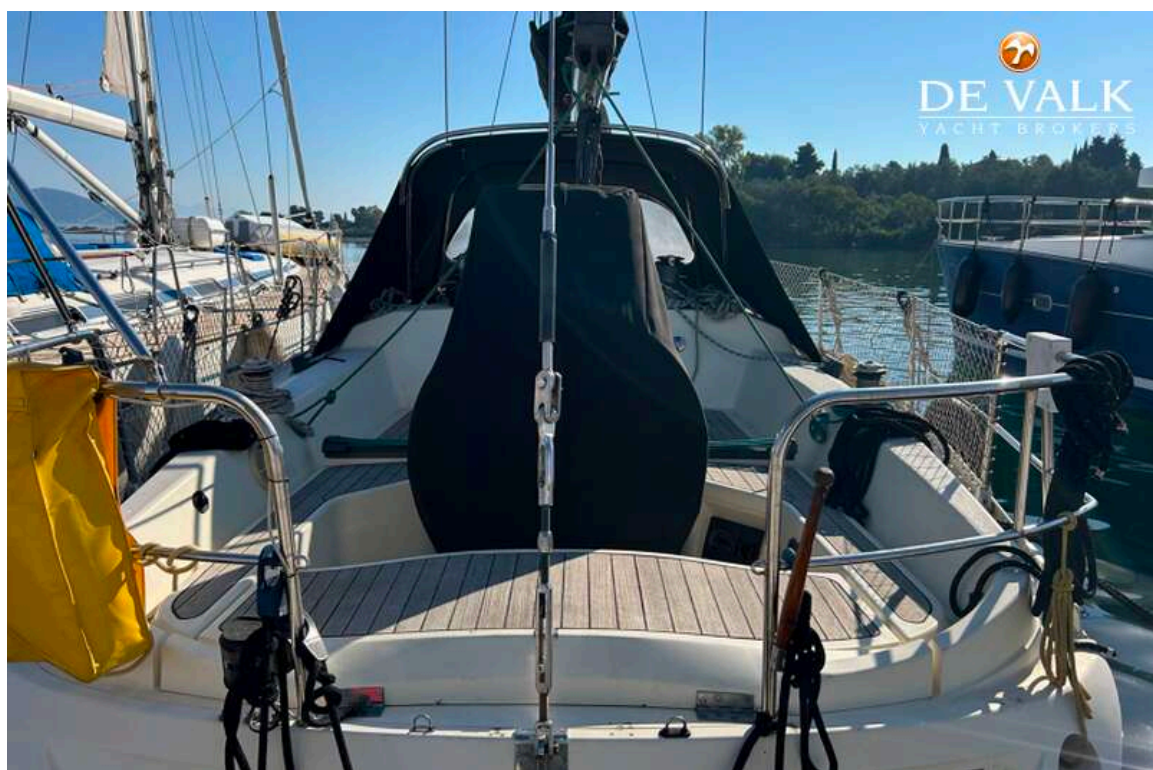
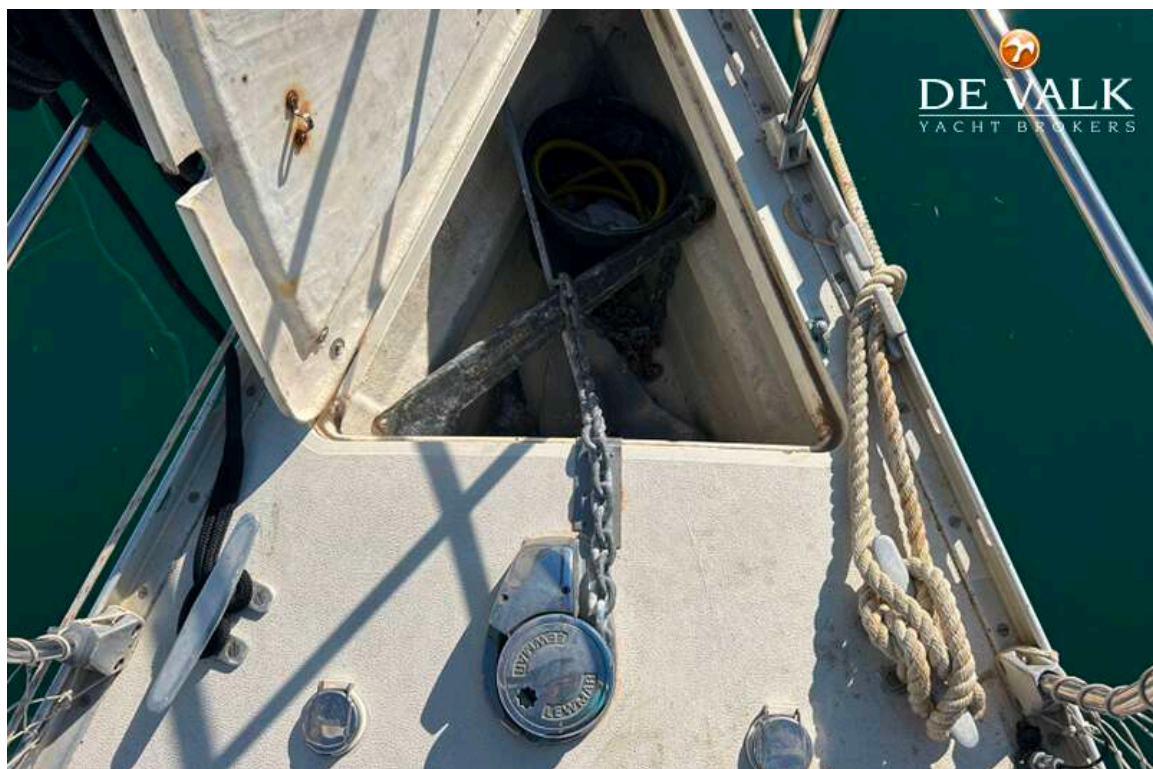




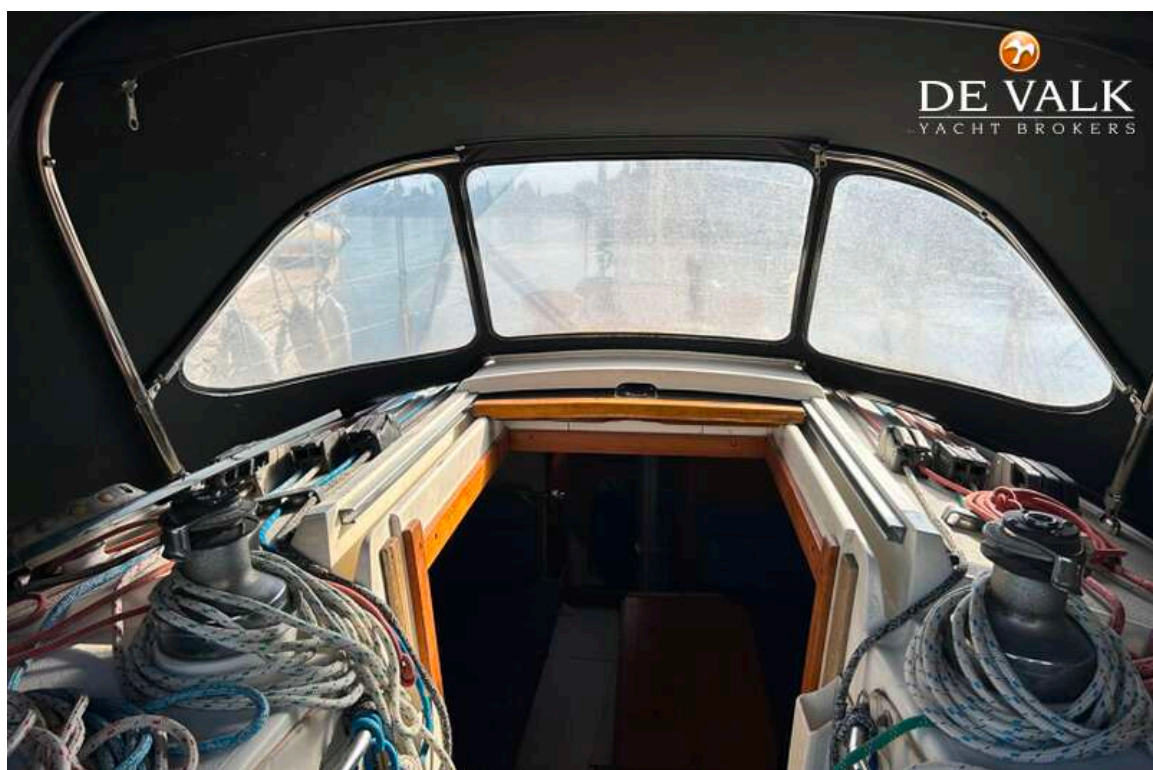




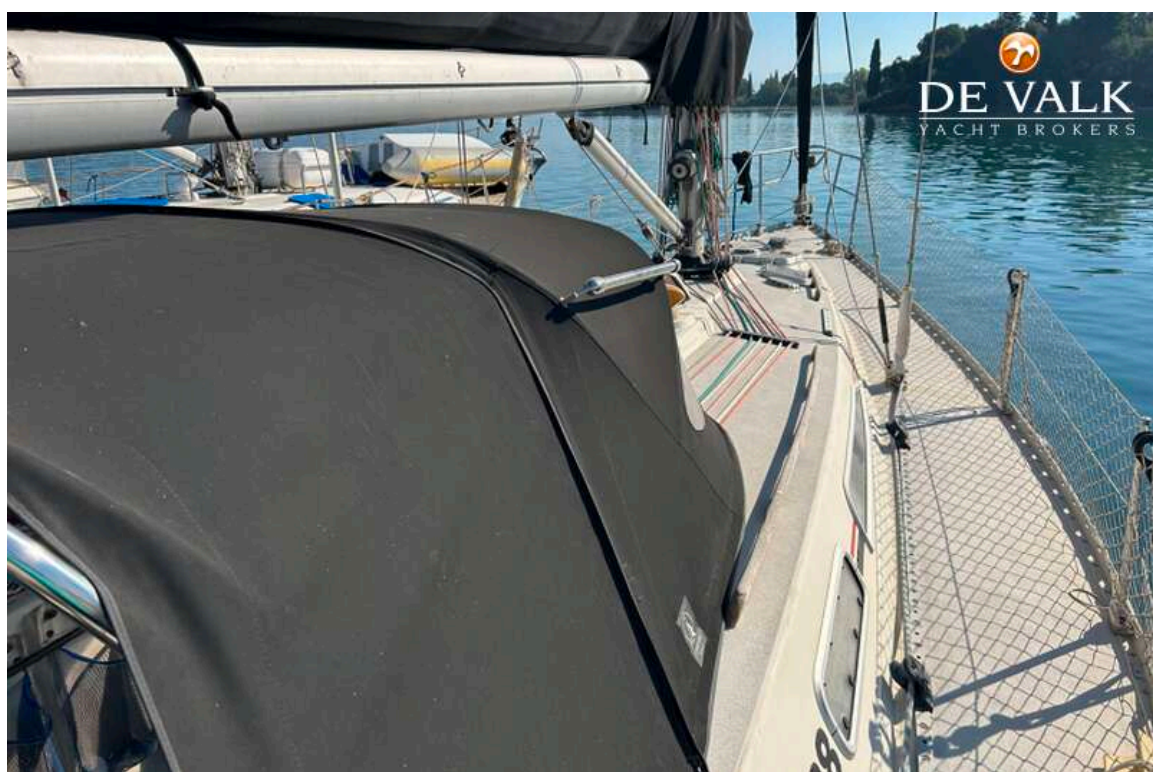












# SIGMA 38

