



DE VALK
YACHT BROKERS



ALUYACHT 49



DE VALK
YACHT BROKERS

ALUYACHT 49

BROKER'S COMMENTS

The Aluyacht 49, first time in water 2017, is a high-quality aluminium sailing yacht designed by Jan Visser. Offered by her first and only owner, she has been meticulously maintained and remains in pristine condition. With 900 liters of water ballast and responsive tiller steering, she is a true sailor's yacht – straightforward, powerful, and free of unnecessary complications. A no-nonsense, robust vessel built for serious cruising and adventure. Now ready to be admired and inspected in our salesharbour in Hindeloopen.

Johan Nooitgedagt

SPECIFICATIONS

Dimensions	15.00 x 4.20 x 2.00 (m)	Builder	Folmer
Built	2014	Cabins	2
Material	Aluminium	Berths	5
Engine(s)	1 x Yanmar 4JH4-HTE diesel	Hp/Kw	110.00 (hp), 80.96 (kw)
Asking price	€ 498.000 (VAT Paid)	Lying	at sales office

CONTACT

Sales office	De Valk Hindeloopen B.V.	Telephone	+31 514 52 40 00
Address	Oosterstrand 1 8713 JS Hindeloopen NL	E-mail	hindeloopen@devalk.nl

DISCLAIMER

These particulars are given in good faith as supplied but cannot be guaranteed.



GENERAL

Model	ALUYACHT 49
Type	sailing yacht
LOA (m)	15,00
LWL (m)	14,60
Beam (m)	4,20
Draft (m)	2,00
Air draft (m)	22,50
Headroom (m)	1,90
Year built	2014
Launched	2017
Builder	Folmer
Country	The Netherlands
Designer	Jan Visser
Displacement (t)	19
Ballast (tonnes)	lead in aluminum
Gross tonnage	19
Net tonnage	5
CE norm	A
Hull material	aluminium
Hull colour	green
Hull thickness (mm)	10
Hull shape	round-bilged
Keel type	bulb keel
Superstructure material	aluminium
Superstructure (mm)	5
Deck plate thickness (mm)	5
Deck material	aluminium
Deck finish	non-skid paint
Superstructure deck finish	non-skid paint
Cockpit deck finish	synthetic teak



ALUYACHT 49

Antifouling (year)	2025
Dorades	2
Window frame	aluminium
Window material	tempered glass
Deckhatch	5x
Insulation	foam
Fuel tank (litre)	aluminium 300
Fuel tank 2 (litre)	aluminium 300
Level indicator (fuel tank)	yes
Freshwater tank (litre)	aluminium 2x 550
Blackwater tank (litre)	aluminium 800
Blackwater tank extraction	deck extraction + pump
Tiller	yes
More info on paintwork	Awl grip

ACCOMMODATION

Cabins	2
Berths	5
Interior	oak
Layout	yes
Floor	carpet
Open cockpit	yes
Doghouse	yes
Saloon	yes
Headroom saloon (m)	1,90
Heating	central hot water Kabola Maritime booster
Chart table	yes
Aft Cabin	yes
Galley	yes
Countertop	corian
Sink	stainless steel



ALUYACHT 49

Cooker	calor gas 3 burner Dometic
Oven	yes
Gas alarm	Truma
Fridge	yes
Hot water system	220V/engine/heating
Water pressure system	electrical
Crockery	yes
Owners cabin	French bed Front
Bed length (m)	2,0m
Wardrobe	shelves
Bathroom	separate
Toilet	separate
Toilet system	electric
Wash basin	in the cabin
Shower	en suite
Guest cabin 1	double bed Rear
Bed length (m)	2,0m
Wardrobe	shelves
Washing machine	OK 6kg

MACHINERY

No of engines	1
Make	Yanmar
Type	4JH4-HTE
HP	110
kW	80.96
Fuel	diesel
Maximum speed (kn)	8
Cruising speed (kn)	6
Consumption (l/hr)	4
Engine hours	1259



Engine cooling system	freshwater heat exchanger
Drive	shaft
Engine controls	mechanical
Gearbox	mechanical
Bowthruster	electric
Exhaust	watercooled
Thrust bearing	yes
Propeller type	reversible
Propeller blades	3
Propeller shaft material	stainless steel
Shaft lubrication	water
Manual bilge pump	yes
Electric bilge pump	yes
Bilge alarm	yes
Electrical installation	yes
Start battery	yes
Service battery	2025 Lithium 3 x 200Ah 24v
Bowthruster battery	yes
Windlass battery	yes
Battery monitor	Victron
Battery charger	Victron Blue Smart Charger
Battery charger/inverter	Victron Orion-Tr 24/12 - 9 110w Victron Quattro 24v
Solar panel	4x Sunware panels
Shorepower	with cable
Insulation transformer	Victron 3600 watt

NAVIGATION

Electric compass	Raymarine i70s
Multi control display	Raymarine i70s
Depth sounder/log	Raymarine
Windset	Raymarine



VHF	ICOM IC - M423G
VHF handheld	yes
Autopilot	Raymarine P70s
Rudder angle indicator	Raymarine P70s
Radar	Raymarine Radar doppler dome
Radar/GPS/plotter	Raymarine Axiom+ 12"
Wifi antenna	Victron Cerbo GX
Electronic chart(s)	yes
AIS transceiver	Raymarine AIS 700 Class B
Personal MOB transmitter	yes
Navigation lights	yes
Searchlight	yes

EQUIPMENT

Fixed windscreen	yes
Bimini	yes
Boarding ladder	stainless steel
Deck shower	yes
Anchor	Rocna
Anchor chain	100m
Anchor chain	20kg
Windlass	electrical Lewmar
Deck wash	yes
Dinghy	rigid hull
Outboard	yes
Davits	aluminum
Davits controls	manual
Sea railing	stainless steel Tube & Dynema
Grab rail (superstructure)	aluminium
Railing side opening gates	yes
Pushpit	yes



Pulpit	yes
Life raft	valise (or bag)
Lifebuoy	yes
Horn	yes
Fenders	yes
Mooring lines	yes
Spare parts	yes
TV	Sony
Satellite	yes
Clock - barometer	Barometer
Fire extinguisher	yes
Extinguisher in engine room	Automatic

RIGGING

Rigging	fractional with backstays
Standing rigging	wire
Brand mast	Seldén
Material mast	aluminium
Spreaders	yes
Keel stepped mast	yes
Mainsail	De Vuurtoren Lemmer
Mainsail cover	De Vuurtoren Lemmer
Battcars	yes
Fully battened mainsail	yes
Genoa	De Vuurtoren Lemmer
Genoa furler	Furlex 404S
Code Zero	De Vuurtoren Lemmer
Staysail furler	Selden CX45
Removable innerforestay	yes
Stormjib	De Vuurtoren Lemmer
Reefing System	quick-one-line-reefing



Backstay adjuster	mechanical
Boomvang	mechanical and tackle Selden rodkicker 30
Genoa sheetwinches	1x Lewmar ST55 manual 1x Lewmar ST55 Electric
Halyard winches	1x Lewmar ST45 on mast
Spinnaker winch	2x Lewmar ST50
Spi-pole	aluminium



ALUYACHT 49



ALUYACHT 49



ALUYACHT 49



ALUYACHT 49



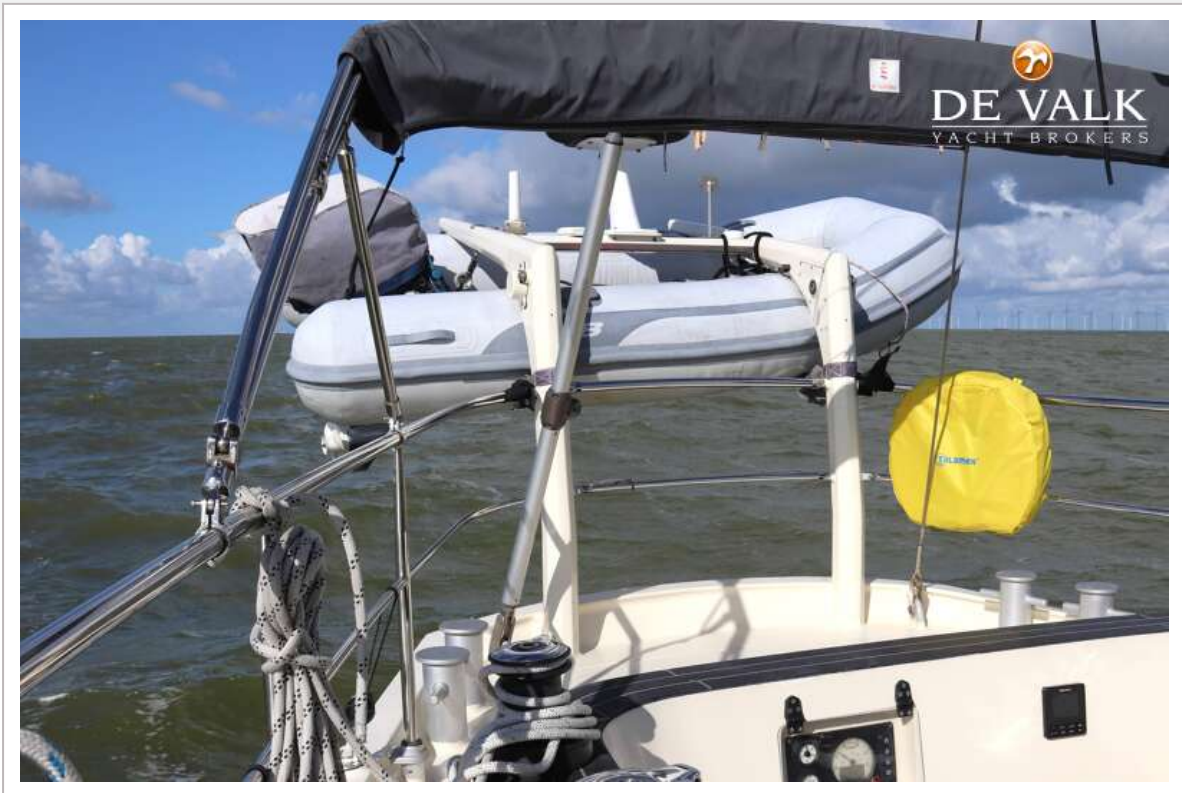
ALUYACHT 49





ALUYACHT 49







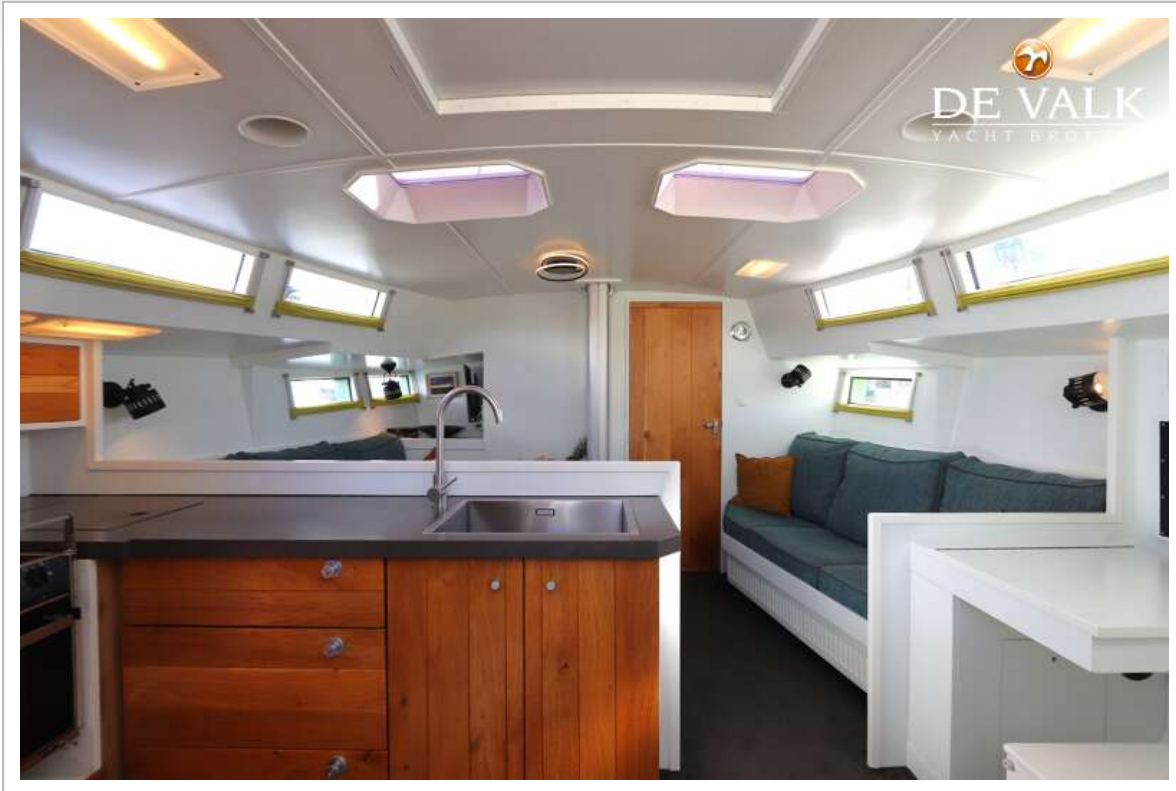
ALUYACHT 49



ALUYACHT 49



ALUYACHT 49



ALUYACHT 49









