



DE VALK

YACHT BROKERS



BENETEAU OCEANIS 40.1



DE VALK  
YACHT BROKERS

BROKERAGE | CHARTER | BERTHS | FINANCE | INSURANCE | YACHT MANAGEMENT

# BENETEAU OCEANIS 40.1

## BROKER'S COMMENTS

This Beneteau Oceanis 40.1 is in splendid, like-new condition and combines elegant design with excellent performance and comfort. The Beneteau Oceanis 40.1 features spacious interiors, modern amenities, and a well-balanced hull, making her ideal for both family cruising and extended voyages. She has been used privately only. Easy handling, generous deck space, and stylish finishes make this yacht the perfect choice for sailors seeking quality, versatility, and pure pleasure on the water. Located in Barcelona.

*Hans Visser*

## SPECIFICATIONS

<b>Dimensions</b>	12.87 x 4.18 x 1.68 (m)	<b>Builder</b>	Beneteau
<b>Built</b>	2022	<b>Cabins</b>	3
<b>Material</b>	GRP	<b>Berths</b>	7
<b>Engine(s)</b>	1 x Yanmar 4JH45 CR diesel	<b>Hp/Kw</b>	45.00 (hp), 33.12 (kw)
<b>Asking price</b>	sold (VAT )	<b>Lying</b>	elsewhere / Not at sales office

## CONTACT

<b>Sales office</b>	De Valk Hindeloopen B.V.	<b>Telephone</b>	+31 514 52 40 00
<b>Address</b>	Oosterstrand 1 8713 JS Hindeloopen NL	<b>E-mail</b>	hindeloopen@devalk.nl

## DISCLAIMER

These particulars are given in good faith as supplied but cannot be guaranteed.



## GENERAL

Model	BENETEAU OCEANIS 40.1
Type	sailing yacht
LOA (m)	12,87
LWL (m)	11,70
Beam (m)	4,18
Draft (m)	1,68
Air draft (m)	18,33
Headroom (m)	1,95
Year built	2022
Launched	2022
Builder	Beneteau
Country	France
Designer	Marc Lombard & Nauta design
Displacement (t)	7,98
Ballast (tonnes)	cast iron   2237 kg shallow draft
CE norm	A
Hull material	GRP
Hull colour	grey   Pearl
Hull shape	round-bilged
Keel type	fin keel
Superstructure material	GRP
Deck material	GRP
Deck finish	non-skid moulded in
Superstructure deck finish	non-skid moulded in
Cockpit deck finish	teak 15 mm
Antifouling (year)	2 x epoxy & 3 x antifouling Hempel from new 2022
Window frame	yes
Window material	polycarbonate   Glued
Deckhatch	2
Portholes	With fly screens



Fuel tank (litre)	polyethylene   195 ltr.
Level indicator (fuel tank)	yes
Freshwater tank (litre)	polyethylene   235 + 330 ltr.
Level indicator (freshwater)	yes
Blackwater tank (litre)	1x 80 ltr. and 1x 50 ltr.
Blackwater tank extraction	deck extraction + uw line
Wheel steering	Twin helm position with twin rudders
Emergency tiller	yes

## ACCOMMODATION

Cabins	3
Berths	7
Interior	oak   White Alpi light with Neo 05 grey upholstery
Layout	3 cabins & 2 heads version
Floor	parquet
Open cockpit	yes
Saloon	yes
Headroom saloon (m)	1,95 mtr.
Heating	diesel ducted hot air   Webasto
Air-conditioning	reverse cycle airco
Navigation center	yes
Chart table	yes
Aft Cabin	2 x
Convertible berth	In saloon
Galley	C-shaped
Countertop	Duropol
Sink	stainless steel   Double
Cooker	calor gas   2 burner   Stainless steel
Oven	In cooker
Fridge	With top-opening + front door
Freezer	In fridge



# BENETEAU OCEANIS 40.1

Hot water system	220V + engine
Water pressure system	electrical
Owners cabin	French bed
Bed length (m)	2,03 x 1,60 - 1,31 mtr.
Wardrobe	hanging/drawers/shelves
Bathroom	en suite
Toilet	Jabsco Quiet flush
Toilet system	electric
Wash basin	yes
Shower	yes
Guest cabin 1	double bed   Starboard
Bed length (m)	2,04 mtr.
Wardrobe	hanging and shelves
Guest cabin 2	double bed   Port
Bed length (m)	2,04 mtr.
Wardrobe	hanging and shelves
Bathroom	shared
Toilet	Jabsco Quiet flush
Toilet system	electric
Wash basin	yes
Shower	yes

## MACHINERY

No of engines	1
Make	Yanmar
Type	4JH45 CR
HP	45
kW	33.12
Fuel	diesel
Year installed	2022
Maximum speed (kn)	8



Cruising speed (kn)	7
Engine hours	575
Engine cooling system	freshwater heat exchanger
Drive	sail-drive
Saildrive seal	yes
Engine controls	bowden cable
Gearbox	mechanical
Bowthruster	electric   retractable
Exhaust	watercooled
Propeller type	folding
Propeller blades	3
Manual bilge pump	yes
Electric bilge pump	yes
Electrical installation	12 V DC & 220 V AC
Batteries	AGM
Start battery	yes
Service battery	2 x AGM
Battery monitor	Navicolor display
Battery charger/inverter	12 V 220 V 3000W
Shorepower	with cable

## NAVIGATION

Compass	yes
Electric compass	B&G
Depth sounder	B&G
Log	B&G
Windset	B&G
VHF	B&G V60
Autopilot	B&G NAC3 with control display & WR 10 remote
Rudder angle indicator	yes
GPS	yes



Plotter/GPS	2 x Zeus S7 one at each helm
PC connection	Interface
Electronic chart(s)	"Navionics Silver
AIS receiver	B&G
Navigation lights	yes

## EQUIPMENT

Sprayhood with grab rail	Luxery version
Bimini	Cadet grey
Cockpit cushions	yes
Cockpit table	Integrated
Anchor	Delta   galvanised
Anchor chain	50 meter chain with colors
Capstan	Electric   1000 W 12 V with remote
Sea railing	wire
Grab rail (superstructure)	stainless steel
Railing side opening gates	yes
Pushpit	yes
Pulpit	yes
Life raft	valise (or bag)
Life raft (pers)	4
Lifejackets	3 x
Lifebuoy	yes
Fenders	yes
Mooring lines	yes
Radio-cd player	Fusion
DVD player	yes
iPod connection	yes
Cockpit speakers	Waterproof
Speakers in salon	yes
Fire extinguisher	yes



## RIGGING

Rigging	sloop   fractional without backstays
Standing rigging	Rod
Brand mast	Z-Diffusion
Material mast	aluminium
Spreaders	2 Aft swept spreaders
Mainsail	34,7 m²   laminated Technique Voile Performance
Fully battened mainsail	Verticle
Stoway mast	yes
Jib	Laminated Technique Voile Performance
Genoa furler	yes
Code Zero	yes
Self tacking jib installation	yes
Reefing System	main in-mast furling
Boomvang	gasspring
Primary sheet winch	2 x H46.2 STA self tailing
Halyard winches	1 x harken 2 speed self tailing with 4 stoppers
Multifunctional winches	Harken H40.2STAH electric self tailing
Gennaker pole	Hull integrated GRP including anchorrole
Extra info	All running rigging leads to the cockpit, except the topping lift
Extra info	Line stoppers at the multifunctional electric winch





# BENETEAU OCEANIS 40.1



# BENETEAU OCEANIS 40.1



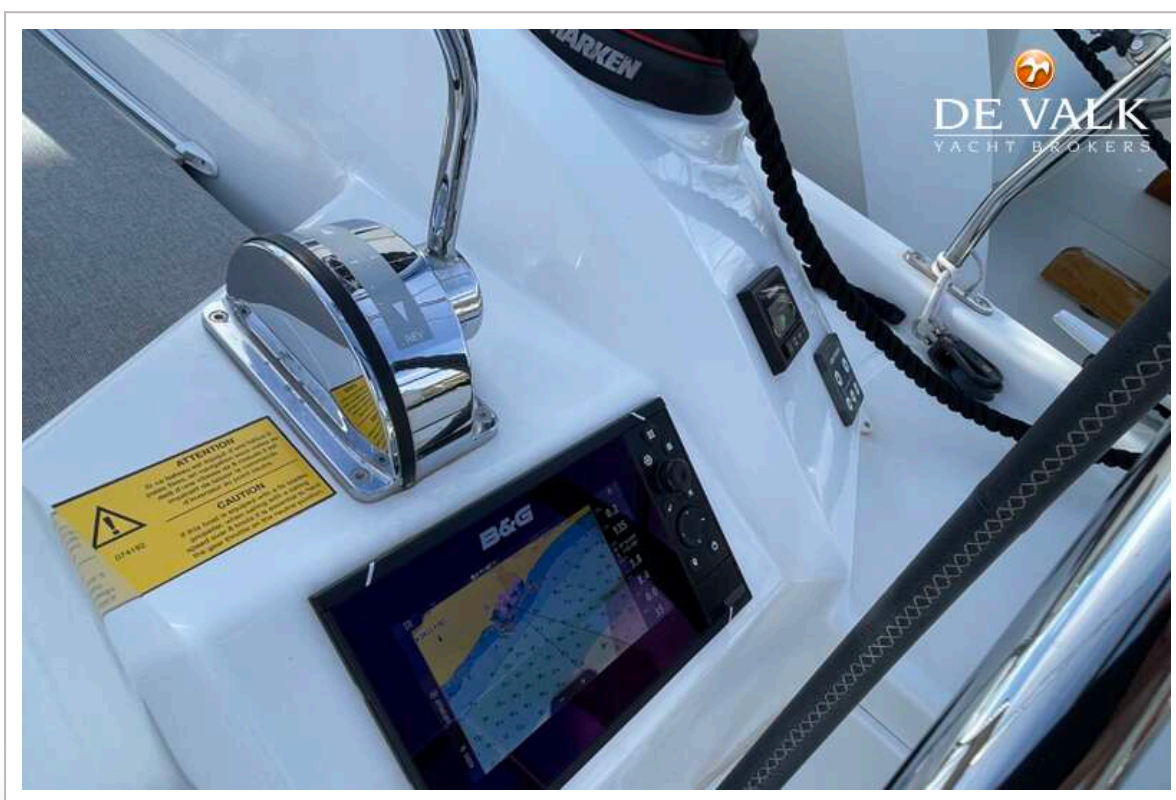


# BENETEAU OCEANIS 40.1



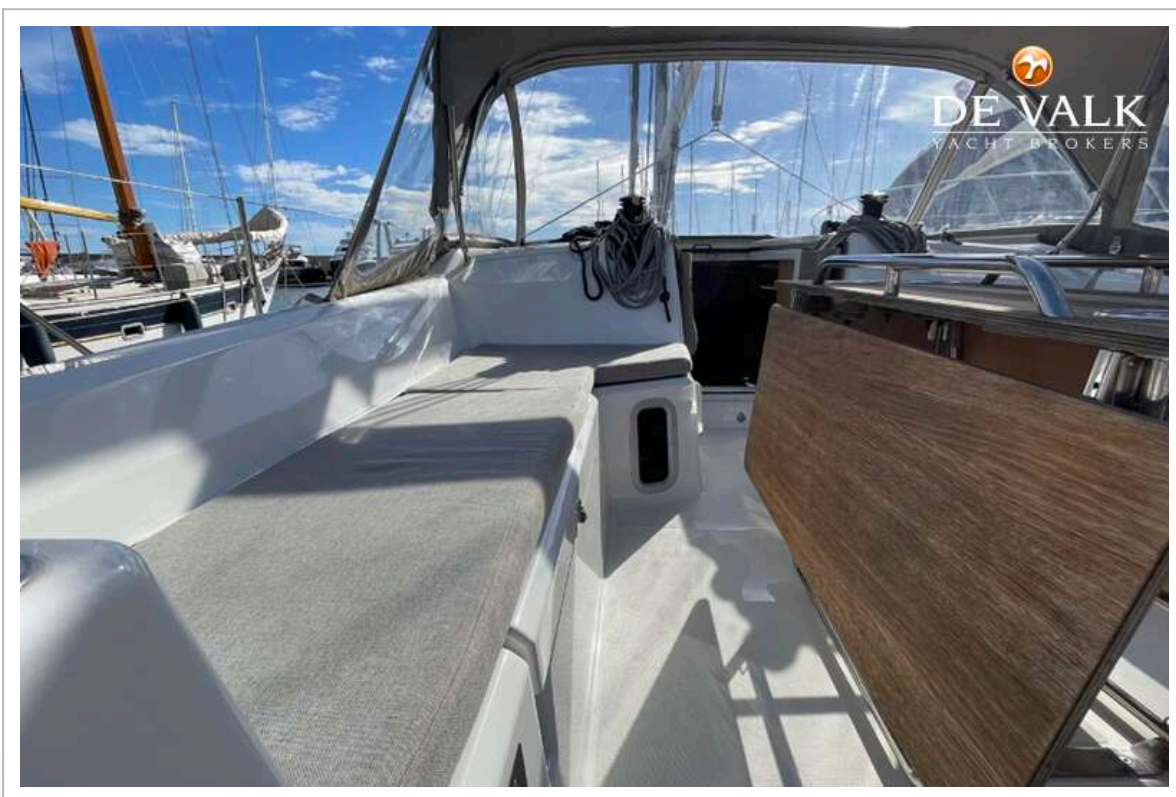


# BENETEAU OCEANIS 40.1





# BENETEAU OCEANIS 40.1





# BENETEAU OCEANIS 40.1

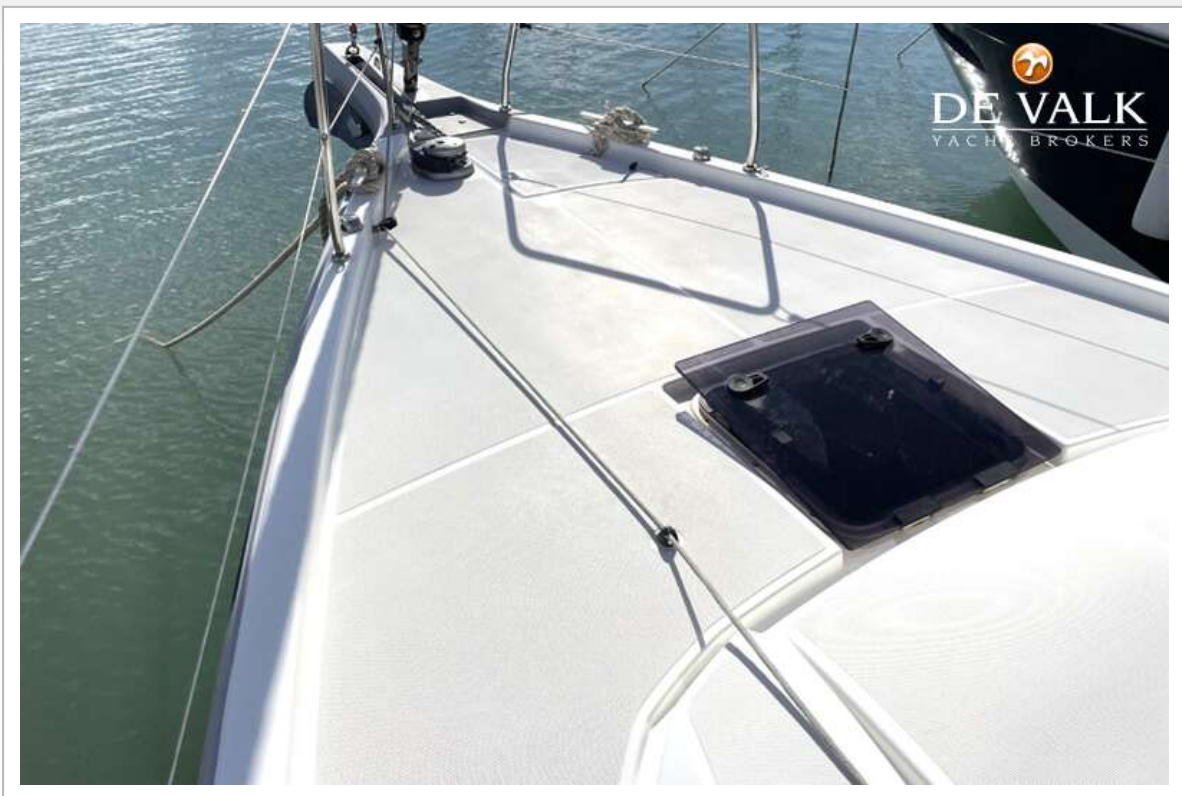


# BENETEAU OCEANIS 40.1

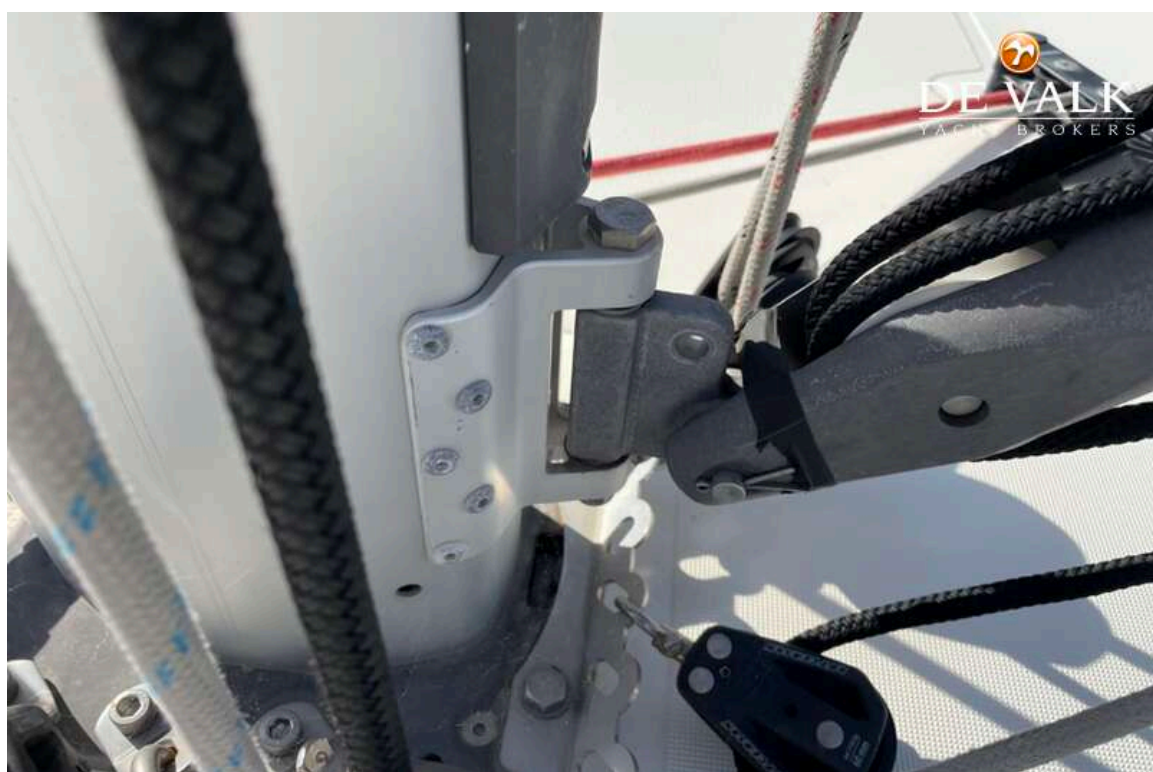




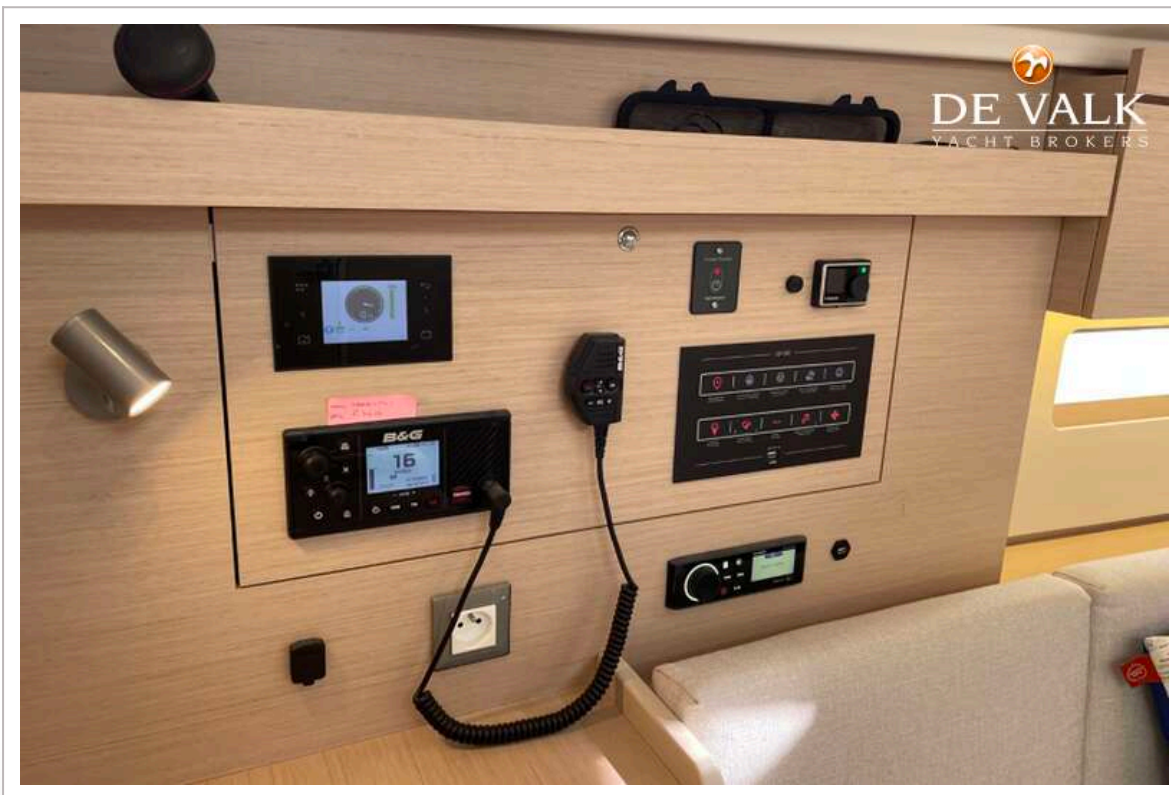
# BENETEAU OCEANIS 40.1







# BENETEAU OCEANIS 40.1





# BENETEAU OCEANIS 40.1

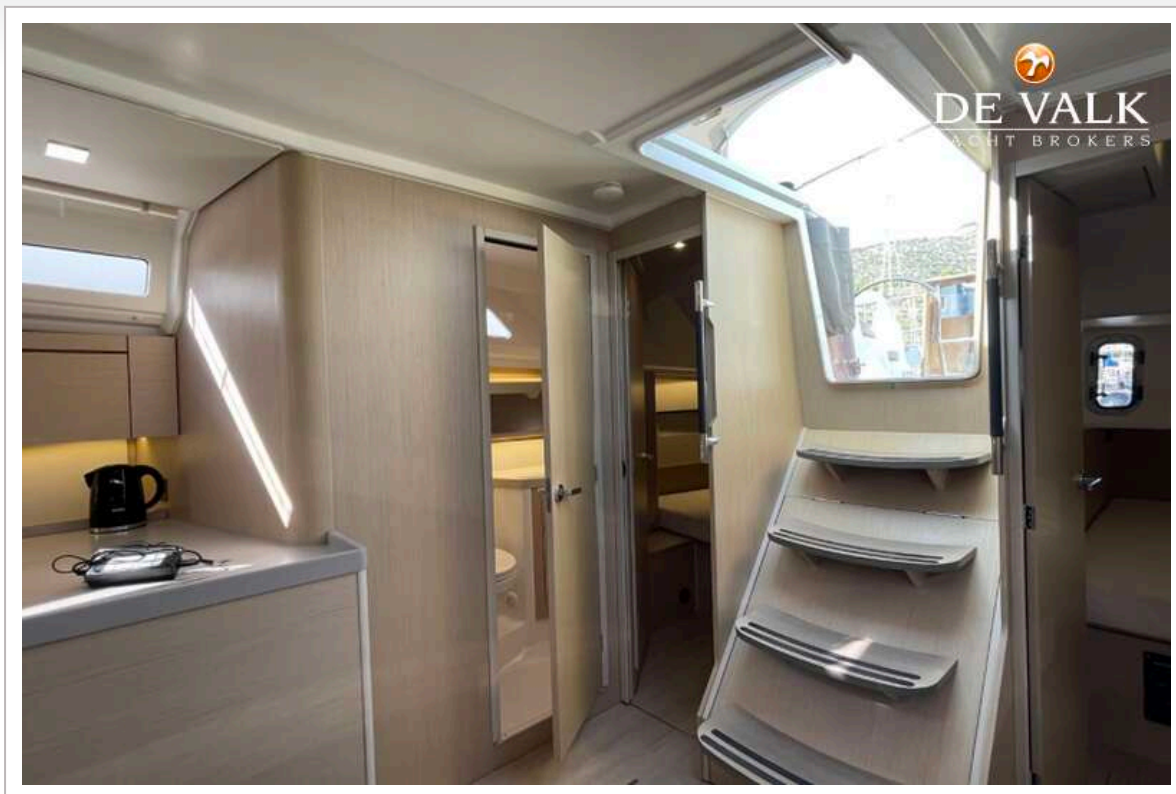


# BENETEAU OCEANIS 40.1





# BENETEAU OCEANIS 40.1

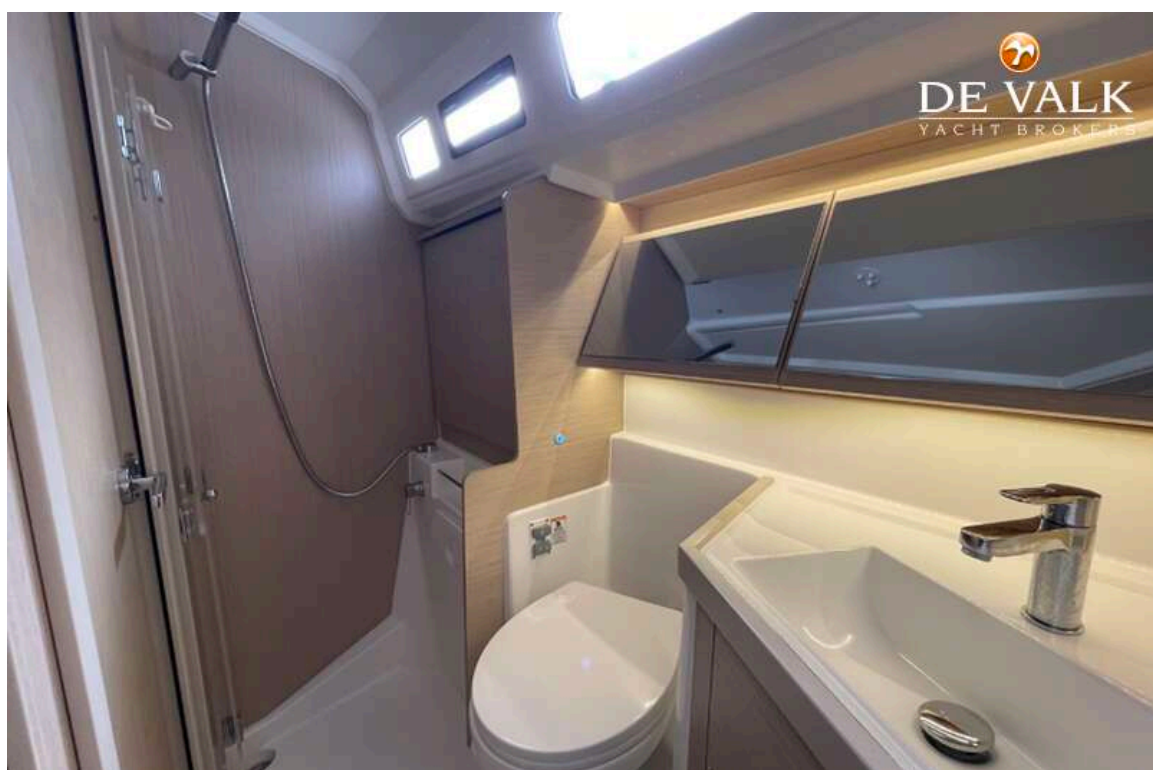


# BENETEAU OCEANIS 40.1

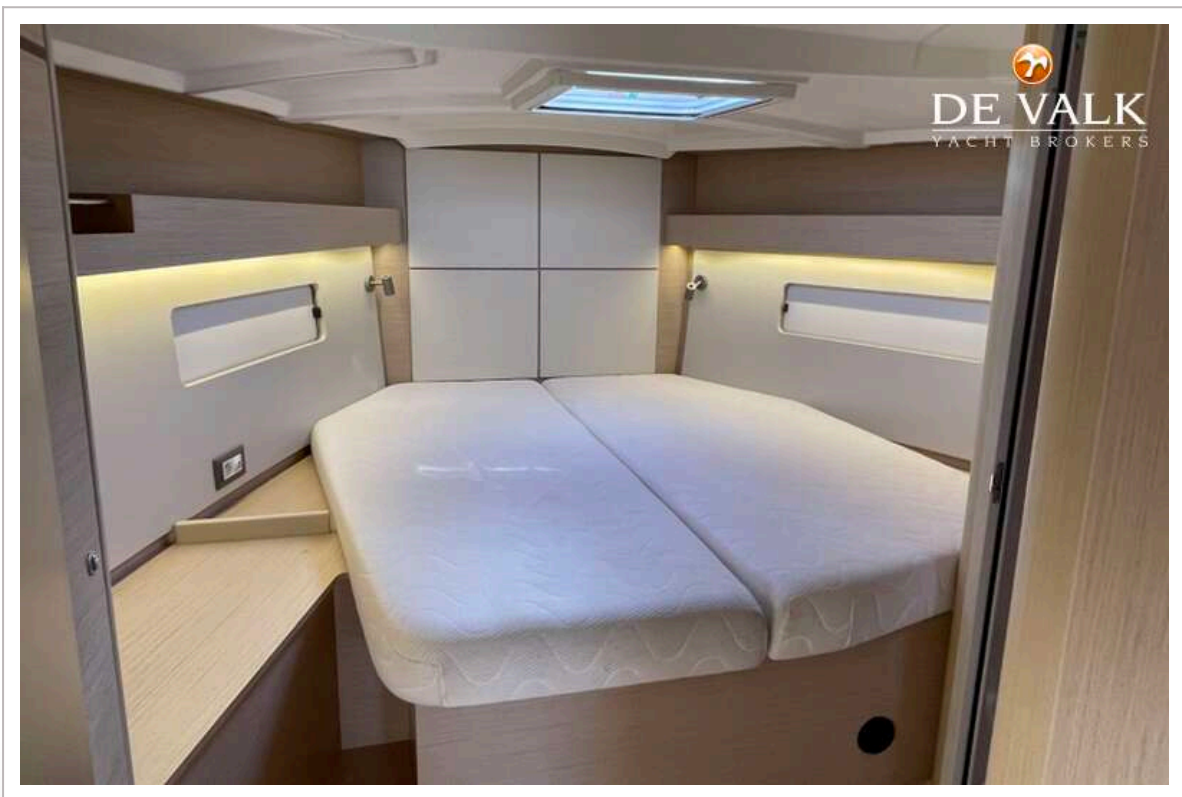




# BENETEAU OCEANIS 40.1

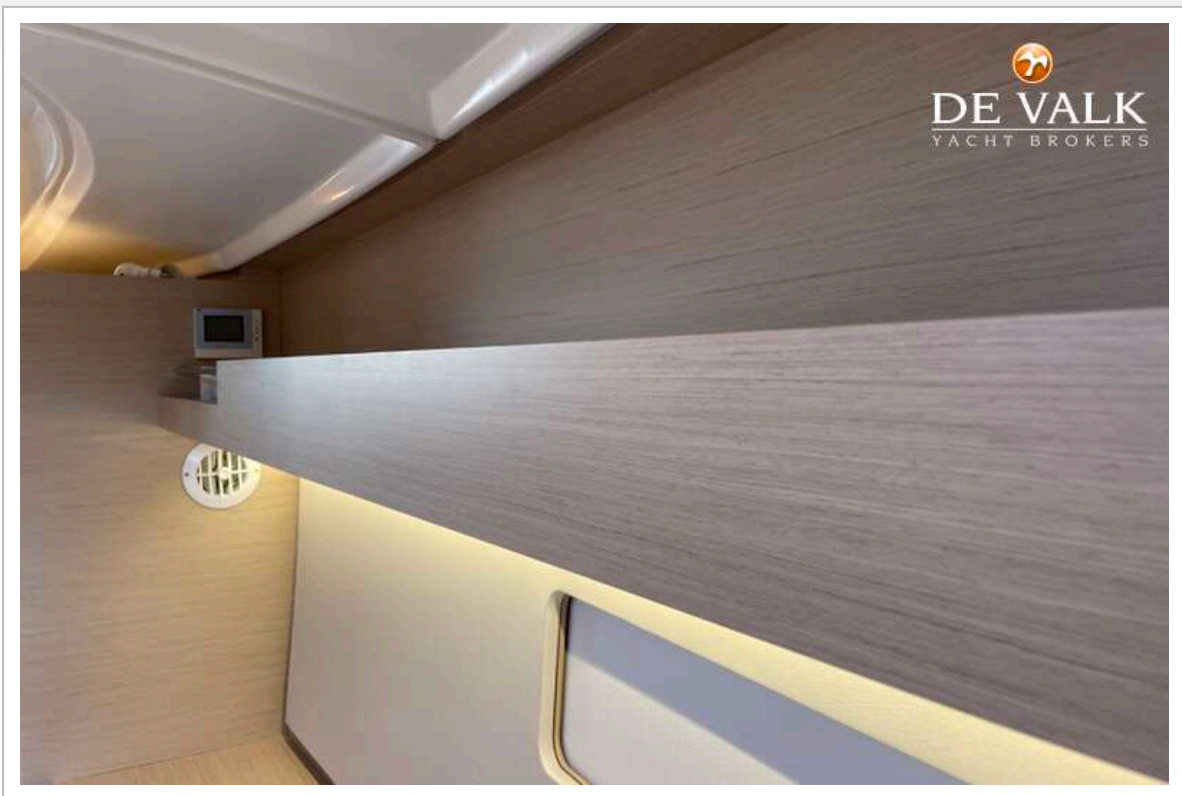


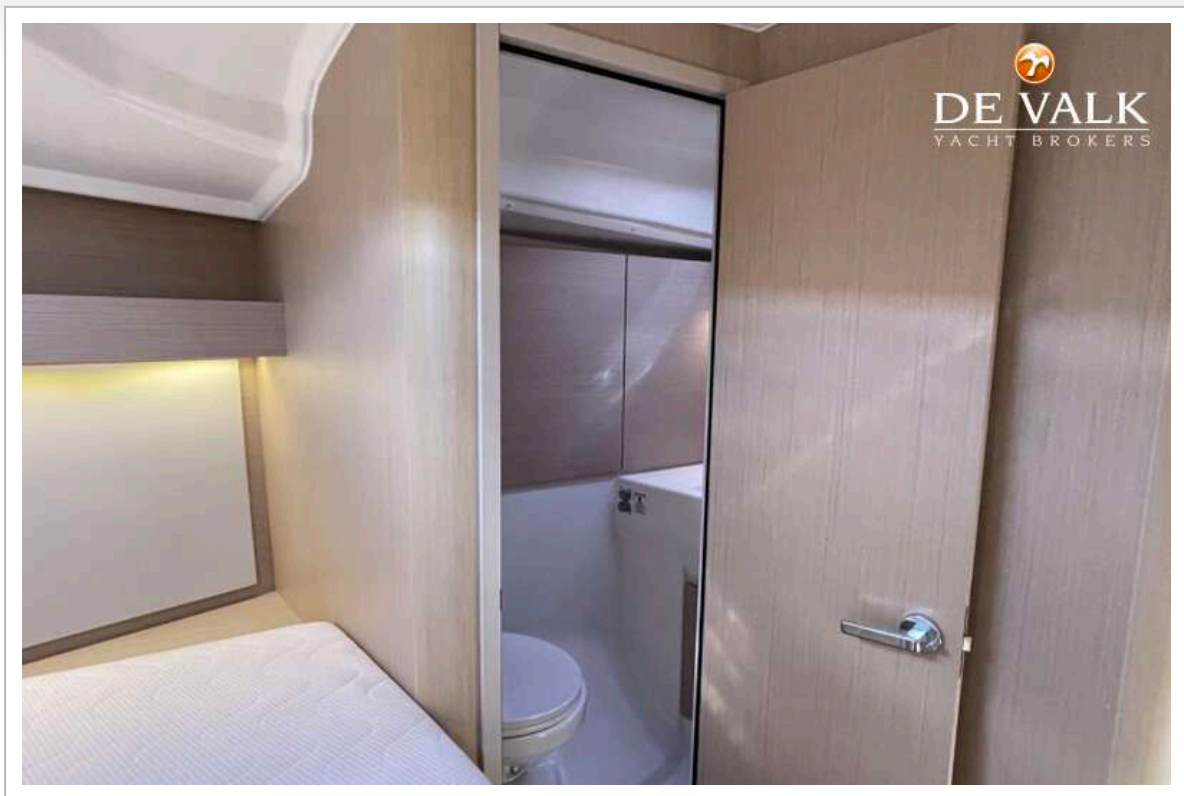
# BENETEAU OCEANIS 40.1





# BENETEAU OCEANIS 40.1







## 3 cabins 2 heads version

