



DE VALK
YACHT BROKERS



FLEUR DE LYS 58



DE VALK
YACHT BROKERS

BROKERAGE | CHARTER | BERTHS | FINANCE | INSURANCE | YACHT MANAGEMENT

BROKER'S COMMENTS

This stunning classic is an absolute eye-catcher in every marina. Hull, deck and super structure are in very good condition. The seams of the wooden hull have all been checked and treated in November 2024 and freshly painted the hull. In 2016 a new 15 mm teak deck was placed. A true beauty for anyone who loves a real "gentleman's" yacht as an affordable live aboard in a very decent state.

Reinoud Bicker Caarten

SPECIFICATIONS

Dimensions	17.37 x 4.57 x 1.75 (m)	Builder	Dagless Ltd.
Built	1961	Cabins	3
Material	Wood	Berths	7
Engine(s)	2 x Rootes Listler TS3 MGR diesel	Hp/Kw	2 x 120.00 (hp), 88.32 (kw)
Asking price	€ 64.000 (VAT Exempt)	Lying	contact sales office

CONTACT

Sales office	De Valk Portugal	Telephone	+351 308 812321
Address	Edifício Administrativo - Ponta da Areia 8500 - 345 Portimão PT	E-mail	portugal@devalk.nl

DISCLAIMER

These particulars are given in good faith as supplied but cannot be guaranteed.



GENERAL

Model	FLEUR DE LYS 58
Type	motor yacht
LOA (m)	17,37
Beam (m)	4,57
Draft (m)	1,75
Headroom (m)	1,85
Year built	1961
Launched	1962
Builder	Dagless Ltd.
Country	United Kingdom
Displacement (t)	36
Ballast (tonnes)	7
Gross tonnage	36
Net tonnage	36
CE norm	NA
Hull material	wood
Hull colour	off-white Painted 10/2024 International
Hull thickness (mm)	75 mm Irokko on Oak frames
Hull shape	Fast Displacement Hull
Bilge keels	yes
Superstructure material	wood
Deck material	wood
Deck finish	teak New 2015, 15 to 18 mm solid
Superstructure deck finish	non-skid paint
Cockpit deck finish	teak New 2015, 15 to 18 mm solid
Antifouling (year)	11/2024
Dorades	yes
Window frame	brass
Window material	glass
Portholes	stainless steel 17



Mast can be lowered	yes
Fuel tank (litre)	3000
Fuel tank 2 (litre)	steel 3.000 (in total 6.000 ltr)
Level indicator (fuel tank)	yes
Freshwater tank (litre)	steel Total 4.000 in galvanized tanks
Level indicator (freshwater)	yes
Blackwater tank (litre)	1.000
Wheel steering	yes
Inside helm position	yes
Emergency tiller	yes
More info on hull	all seams checked and treated Cream color painted in 09/2024
More info on paintwork	New 2024
Extra info	For her age in amazing good condition!

ACCOMMODATION

Cabins	3
Berths	7
Pilot house	yes
Deck saloon	yes
Headroom saloon (m)	1.85
Heating	diesel ducted hot air
Heating 2	diesel ducted hot air
Air-conditioning	reverse cycle airco 2 loose systems, not built-in
Navigation center	yes
Aft Cabin	Master
Dining room	yes
Dinette	yes
Sliding door to aft deck	yes
Galley	yes
Countertop	stainless steel
Sink	yes



Cooker	yes
Microwave	yes
Fridge	yes
Freezer	yes
Hot water system	220V
Water pressure system	yes
Owners cabin	double bed
Bed length (m)	200
Wardrobe	hanging/drawers/shelves
Bathroom	en suite
Toilet	en suite
Toilet system	electric
Wash basin	in the bathroom
Shower	en suite
Guest cabin 1	twin single
Bed length (m)	1.95
Wardrobe	hanging and shelves
Bathroom	shared
Toilet	shared
Toilet system	electric
Wash basin	in the bathroom
Shower	shared
Guest cabin 2	bunk bed
Bed length (m)	1.95
Wardrobe	hanging and shelves
Bathroom	shared
Toilet	shared
Toilet system	electric
Wash basin	in the bathroom
Shower	shared
Washing machine/dryer combi	Zanussi Studio Line



MACHINERY

No of engines	2
Make	Rootes Listler
Type	TS3 MGR
HP	120
kW	88.32
Fuel	diesel
Year installed	1961
Year of overhaul	2015
Maximum speed (kn)	12
Cruising speed (kn)	8
Consumption (l/hr)	14
Engine hours	2500
Engine cooling system	freshwater heat exchanger
Drive	shaft
Engine controls	yes
Bowthruster	N/a
Exhaust	watercooled
Propeller type	fixed Bronze, new 2017
Propeller blades	3
Propeller shaft material	stainless steel
Manual bilge pump	yes
Electric bilge pump	yes
Electrical installation	12/24/220
Generator	Lombardini Marine
Batteries	yes
Start battery	2
Service battery	10
Windlass battery	yes
Battery monitor	EMUS BMS Mgt system
Inverter	Victron Phoenix



Battery charger/inverter

Victron

Solar panel

16 x 180 Watt, no need for shore power

NAVIGATION

Compass

yes

Electric compass

On pilot

Depth sounder

Raymarine ST40

Windset

Raymarine ST40

VHF

Standard Horizon GX 200 E VHF/AIS

Autopilot

Raymarine 8001

Rudder angle indicator

On pilot display

Radar

Raymarine Axiom 2

GPS

yes

Radar/GPS

yes

Radar/GPS/plotter

Raymarine Axiom 2

Weather receiver

yes

Wifi antenna

yes

Electronic chart(s)

yes

AIS transponder

yes

EPIRB

yes

Camera

Security

Navigation lights

yes

Searchlight

yes

EQUIPMENT

Fixed hardtop

Solar panels on top

Bimini

yes

Sun awning

yes

Winter cover

At cockpit, living all year around

Cockpit cushions

yes

Cockpit table

yes



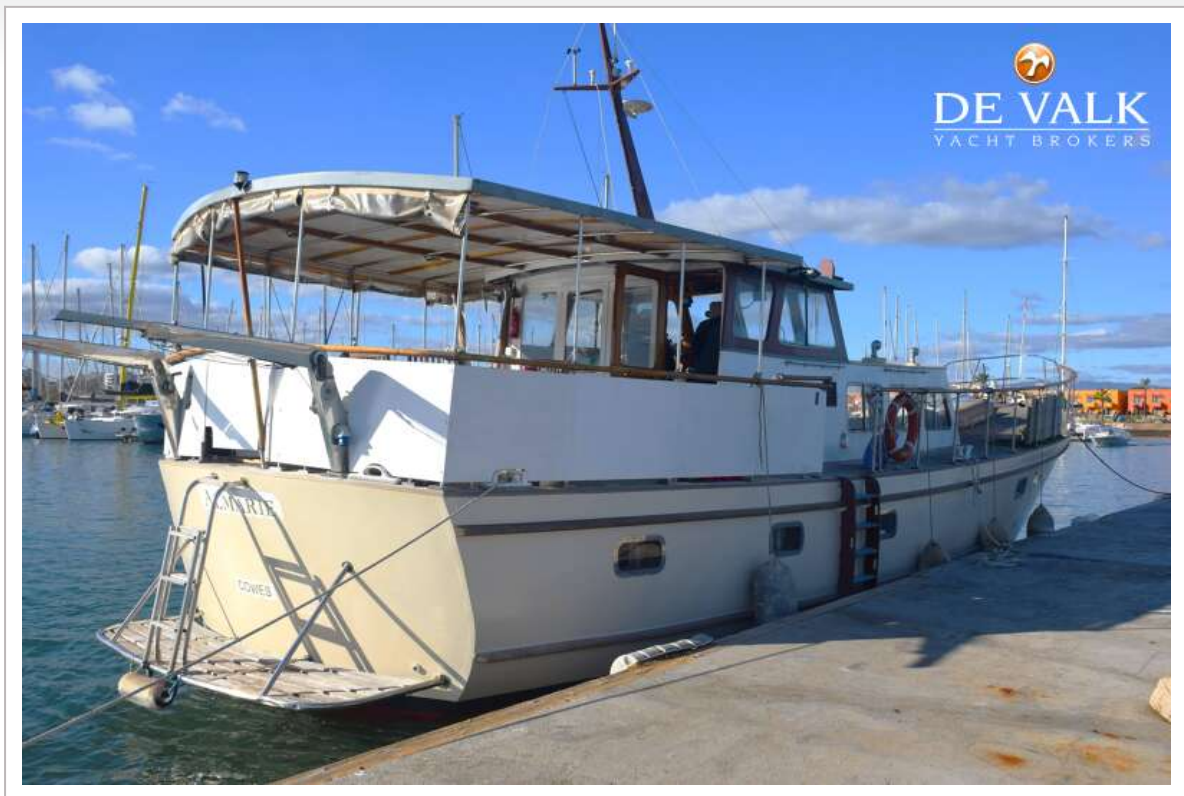
Cockpit chairs	yes
Bathing platform	yes
Transom door	yes
Gangway	Wide acces
Deck shower	yes
Anchor chain	yes
Windlass	electrical
Dinghy	3,10
Outboard	6 hp Person
Outboard support	yes
Davits	stainless steel
Davits controls	manual
Sea railing	yes
Grab rail (superstructure)	teak Protected by covers (see pics)
Lifejackets	yes
Wiper	yes
Horn	yes
Radar reflector	yes
Fenders	yes
Mooring lines	yes
Spare parts	Many spare parts
Radio	yes
Cockpit speakers	yes
Speakers in salon	yes
Clock - barometer	yes
Fire extinguisher	Needs check for insurance
Extinguisher in engine room	Needs check for insurance



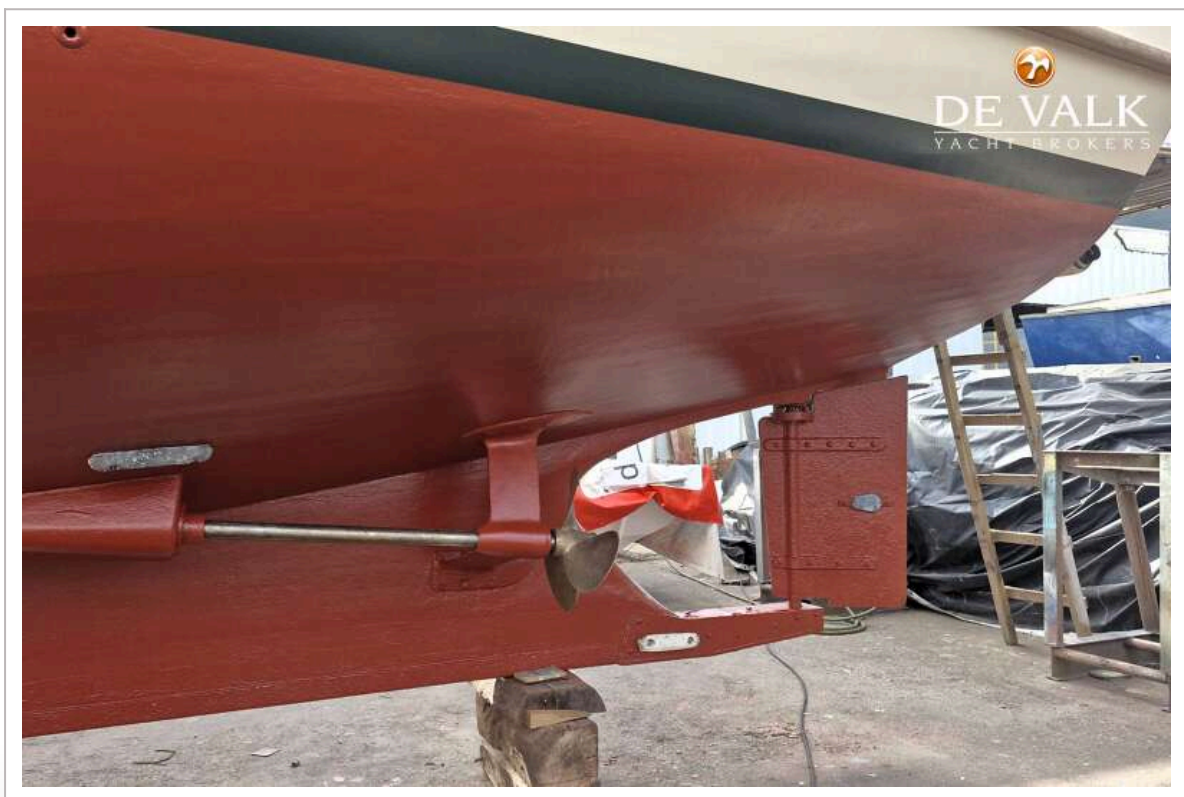
FLEUR DE LYS 58



FLEUR DE LYS 58



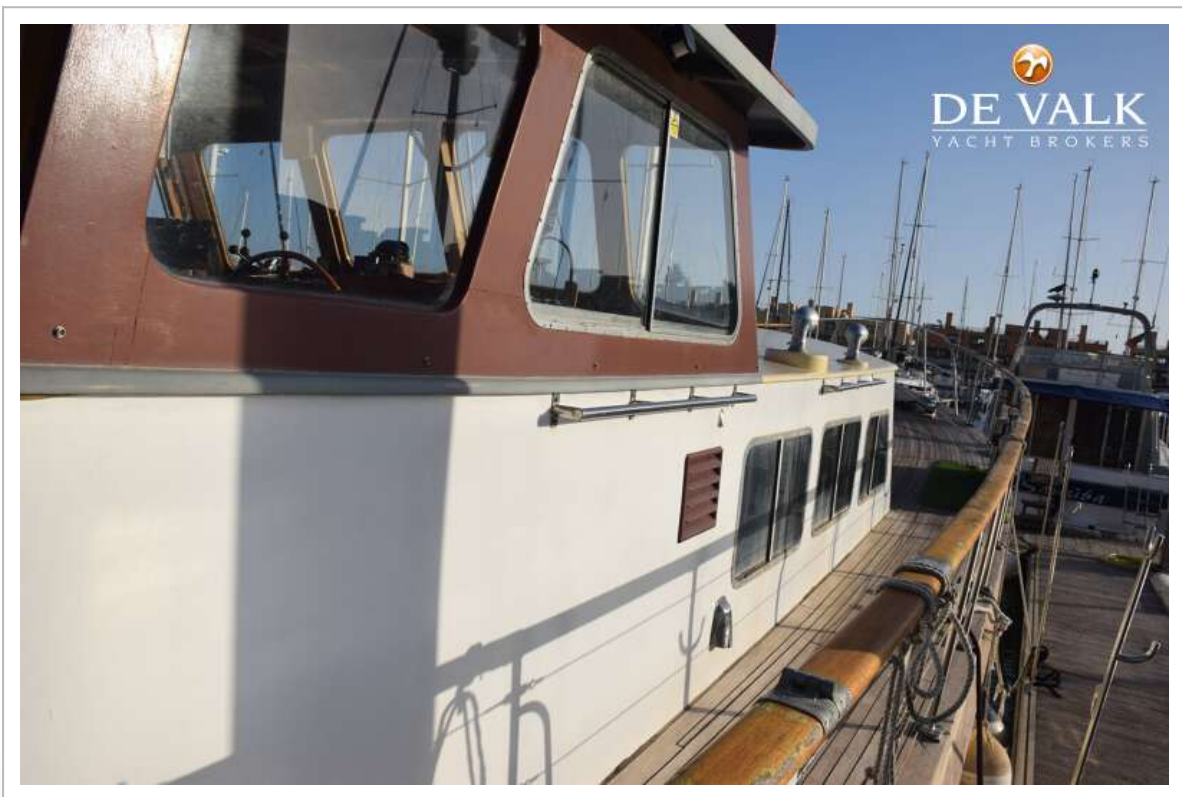
FLEUR DE LYS 58



FLEUR DE LYS 58



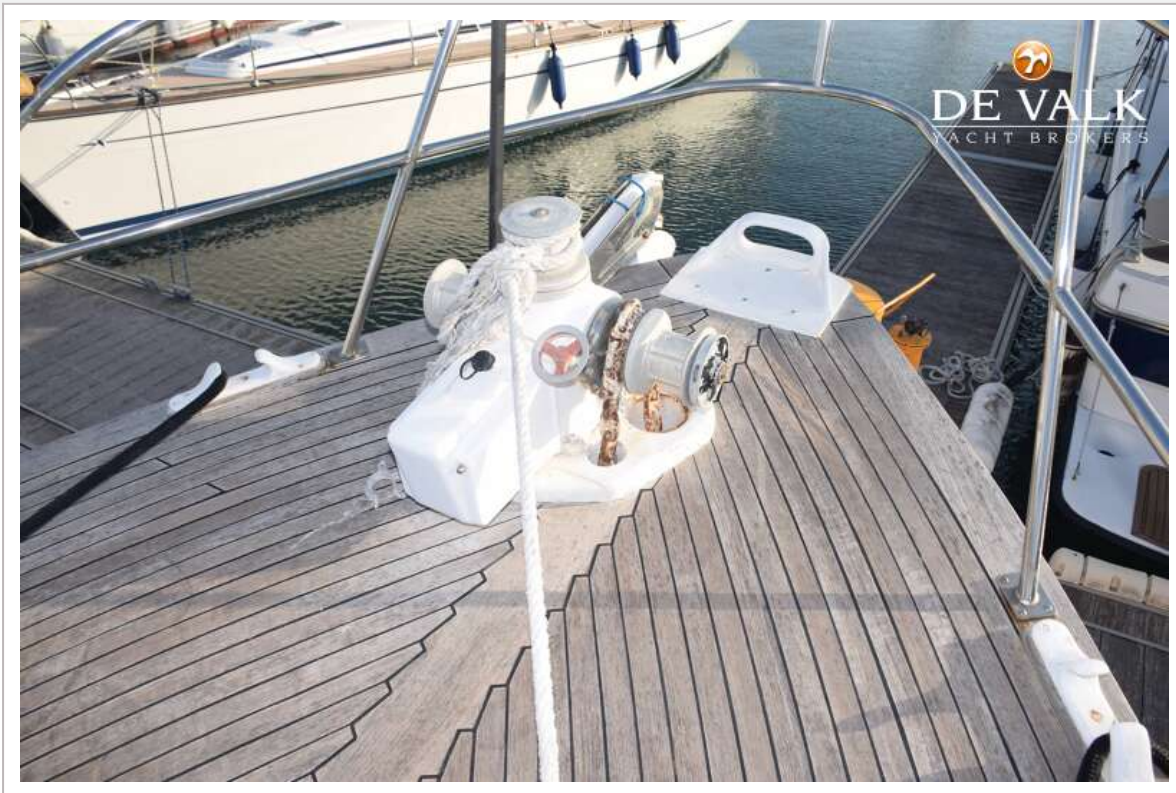
FLEUR DE LYS 58



FLEUR DE LYS 58

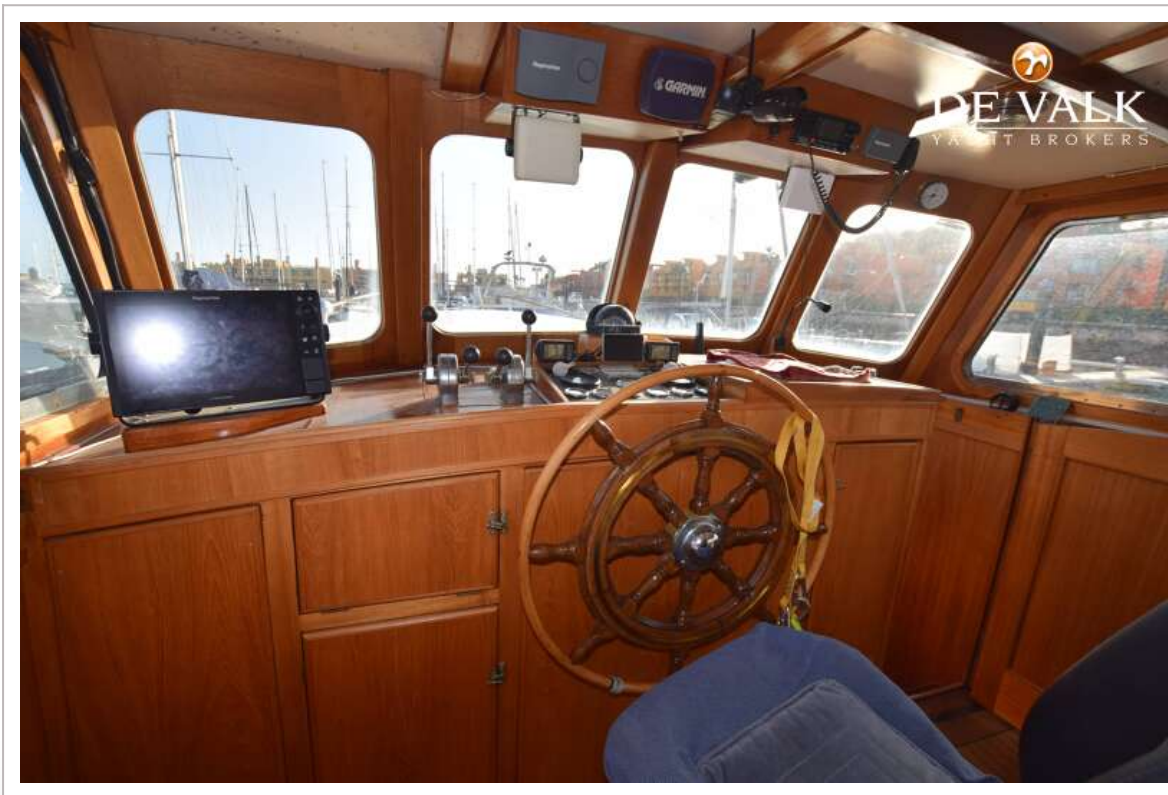
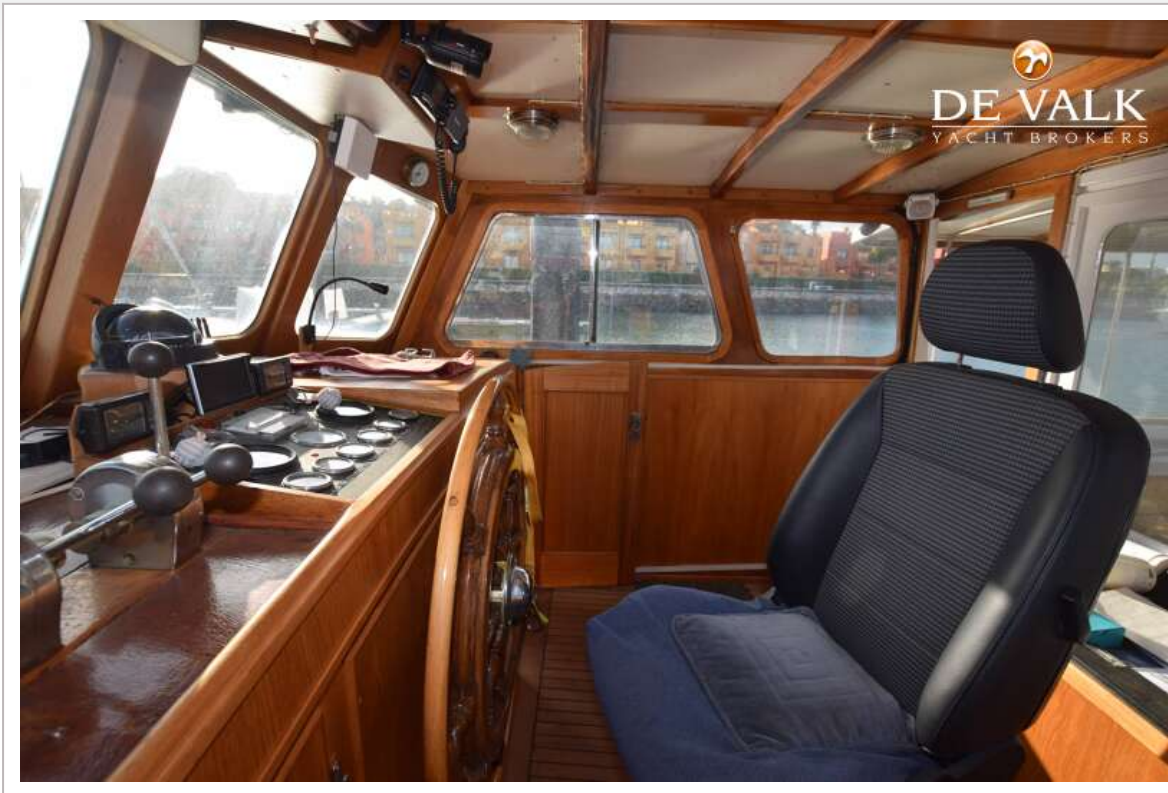


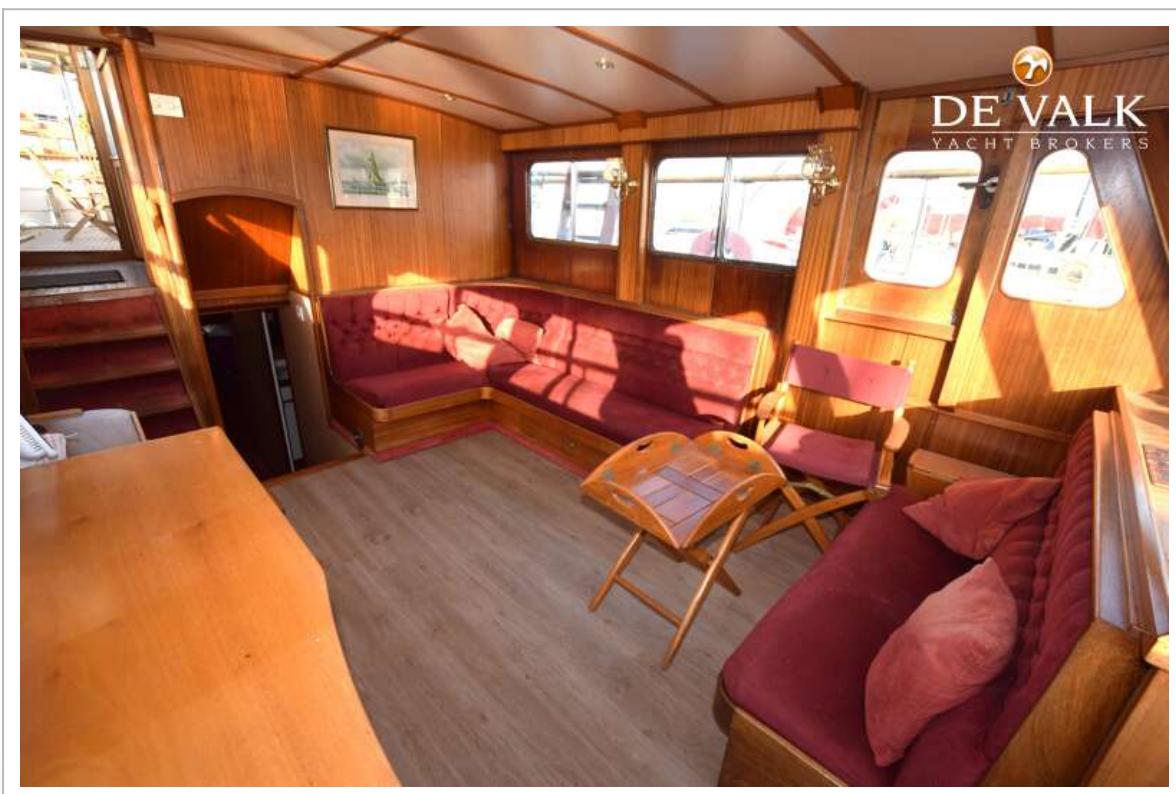
FLEUR DE LYS 58





FLEUR DE LYS 58





FLEUR DE LYS 58



FLEUR DE LYS 58

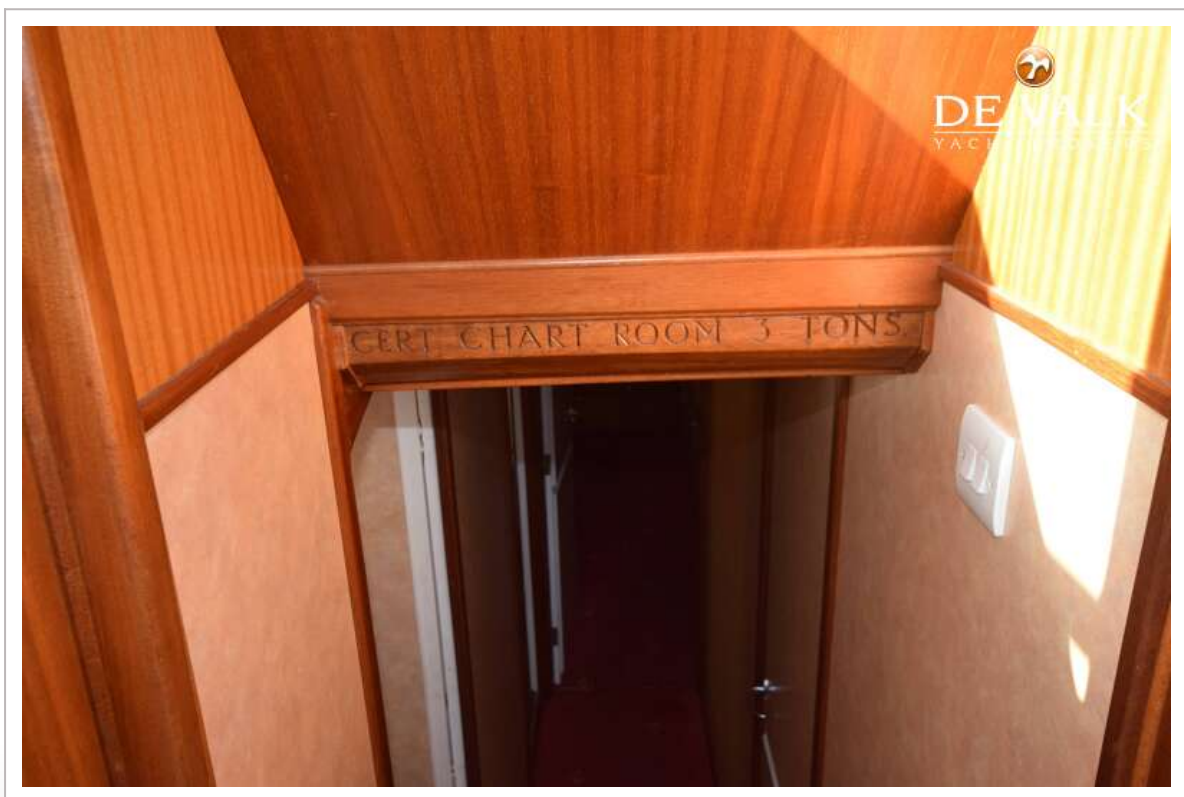




FLEUR DE LYS 58



FLEUR DE LYS 58



FLEUR DE LYS 58



FLEUR DE LYS 58

