



DE VALK
YACHT BROKERS



NORD STAR 37 PATROL



DE VALK
YACHT BROKERS

NORD STAR 37 PATROL

BROKER'S COMMENTS

This very fresh sturdy Nord-Star 37 CE-B is a great ship for in and outdoor water, with 2 x 300 Hp diesel engines, bow and stern thrusters, 2 cabins and 4/5 berths, and solar panels. If you are interested, you can view this boat at our covered sales marina in Sneek.

Peter Spruyt

SPECIFICATIONS

Dimensions	11.95 x 3.85 x 1.20 (m)	Builder	Linex Boat OY
Built	2010	Cabins	2
Material	GRP	Berths	5
Engine(s)	2 x Volvo-Penta D4 diesel	Hp/Kw	2 x 300.00 (hp), 220.80 (kw)
Asking price	€ 249.500 (VAT Paid)	Lying	at sales office

CONTACT

Sales office	De Valk Sneek	Telephone	+31 (0)515 42 80 30
Address	Zwolsmanweg 7 8606 KC Sneek NL	E-mail	sneek@devalk.nl

DISCLAIMER

These particulars are given in good faith as supplied but cannot be guaranteed.



NORD STAR 37 PATROL

GENERAL

Model	NORD STAR 37 PATROL
Type	motor yacht
LOA (m)	11,95
Beam (m)	3,85
Draft (m)	1,20
Air draft (m)	4,60
Air draft min (m)	4,20
Headroom (m)	2,10
Year built	2010
Builder	Linex Boat OY
Country	Finland
Displacement (t)	9
CE norm	B
Hull material	GRP
Hull colour	blue
Hull shape	deep-V
Superstructure material	GRP
Rubbing strake	rubber
Deck material	GRP
Deck finish	teak
Superstructure deck finish	paint
Cockpit deck finish	paint
Antifouling (year)	April 2025
Window frame	aluminium
Window material	glass
Deckhatch	yes
Portholes	aluminium
Radar arch	non collapsible
Fuel tank (litre)	stainless steel 400 ltr
Fuel tank 2 (litre)	stainless steel 400 Ltr



NORD STAR 37 PATROL

Level indicator (fuel tank)	yes
Freshwater tank (litre)	stainless steel 250 ltr
Level indicator (freshwater)	yes
Blackwater tank (litre)	aluminium 200 ltr
Level indicator (blackwater)	yes
Wheel steering	hydraulic
Inside helm position	yes

ACCOMMODATION

Cabins	2
Berths	5
Interior	teak
Floor	carpet
Aft deck	yes
Saloon	yes
Headroom saloon (m)	(2,10)
Heating	diesel ducted hot air
Dinette	yes
Sliding door to aft deck	yes
Galley	yes
Countertop	corian
Sink	stainless steel
Cooker	calor gas 2 x
Oven	ENO
Fridge	Isotherm 85 Ltr
Freezer	yes
Hot water system	220V + engine Boiler
Water pressure system	electrical
Owners cabin	yes
Bed length (m)	1,95 Mtr
Wardrobe	hanging/drawers/shelves



NORD STAR 37 PATROL

Bathroom	en suite
Toilet	en suite
Toilet system	electric Jabsco
Wash basin	at the toilet Douche
Shower	en suite
Guest cabin 1	twin single 1 x 1,20/ 1 x 0,85 Mtr
Bed length (m)	2,00 Mtr
Wardrobe	hanging and drawers

MACHINERY

No of engines	2
Make	Volvo-Penta
Type	D4
HP	300
kW	220.80
Fuel	diesel
Maximum speed (kn)	30
Cruising speed (kn)	20
Engine hours	1104
Engine cooling system	freshwater heat exchanger
Drive	Z-drive
Engine controls	electrical Volvo-Penta
Gearbox	hydraulic
Bowthruster	electric
Sternthruster	electric
Propeller type	fixed Dual Prop/ Conter-rotating propeller.
Propeller blades	yes
Propeller shaft material	stainless steel
Shaft lubrication	water
Manual bilge pump	yes
Electric bilge pump	yes



NORD STAR 37 PATROL

Batteries	yes
Start battery	1 x 90
Service battery	3 x 90
Bowthruster battery	yes
Sternthruster battery	yes
Battery charger	12/ 4 Mastervolt
Inverter	1200 VA
Battery charger/inverter	12/ 35/ 3 Mastervolt
Solar panel	2 x
Shorepower	yes
Trimtabs	QL-Interceptor

NAVIGATION

Compass	Liquid
Depth sounder/log	Raymarine ST60 Tridata
Windset	Raymarine ST60
VHF	2 x B&G / AIS Transponder
Autopilot	Raymarine +Remote Control
Radar	yes
Plotter/GPS	Raymarine 9/ 3D HV-100
Radar/plotter	yes
Radar/GPS/plotter	Raymarine C120
Camera	3 x
Navigation lights	yes
Searchlight	yes

EQUIPMENT

Cockpit cover	yes
Bathing platform	yes
Boarding ladder	yes
Deck shower	yes



NORD STAR 37 PATROL

Anchor	CQR Plough 15 Kg
Anchor chain	yes
Anchor 2	CQR Plough 15 Kg
Anchor chain	yes
Windlass	electrical Lewman
Windlass aft	electrical Lewman
Sea railing	stainless steel
Wiper	3 x
Horn	electric
Fenders	yes
Mooring lines	yes
Radio	JVC
Speakers in salon	yes
Clock - barometer	yes
Fire extinguisher	3x
Auto extinguisher system	yes



NORD STAR 37 PATROL



NORD STAR 37 PATROL



NORD STAR 37 PATROL



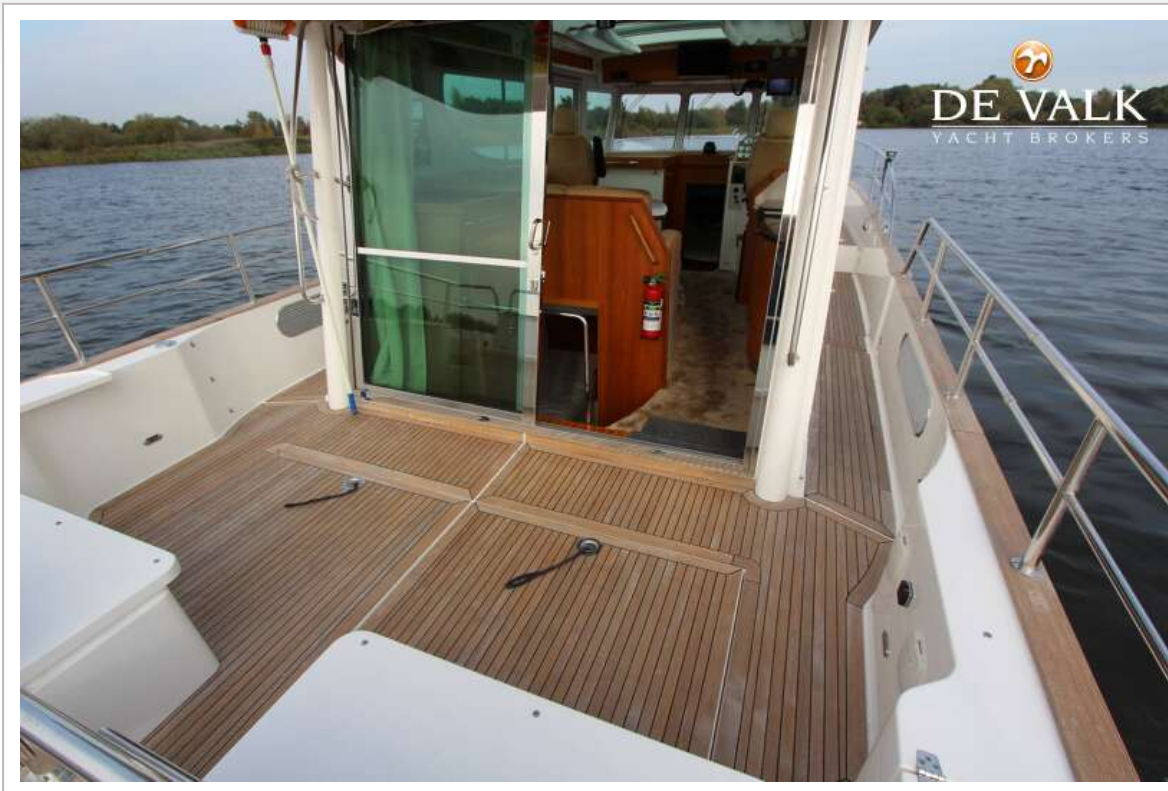
NORD STAR 37 PATROL



NORD STAR 37 PATROL



NORD STAR 37 PATROL



NORD STAR 37 PATROL



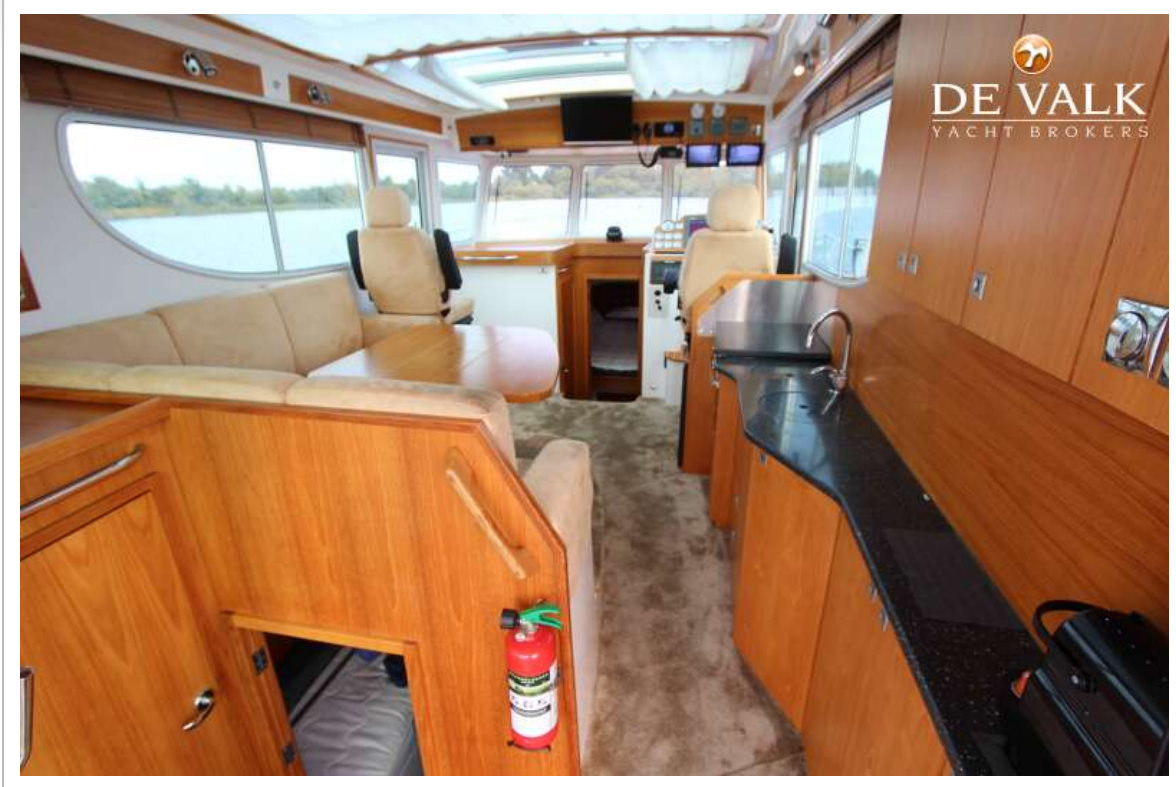
NORD STAR 37 PATROL



NORD STAR 37 PATROL



NORD STAR 37 PATROL



NORD STAR 37 PATROL



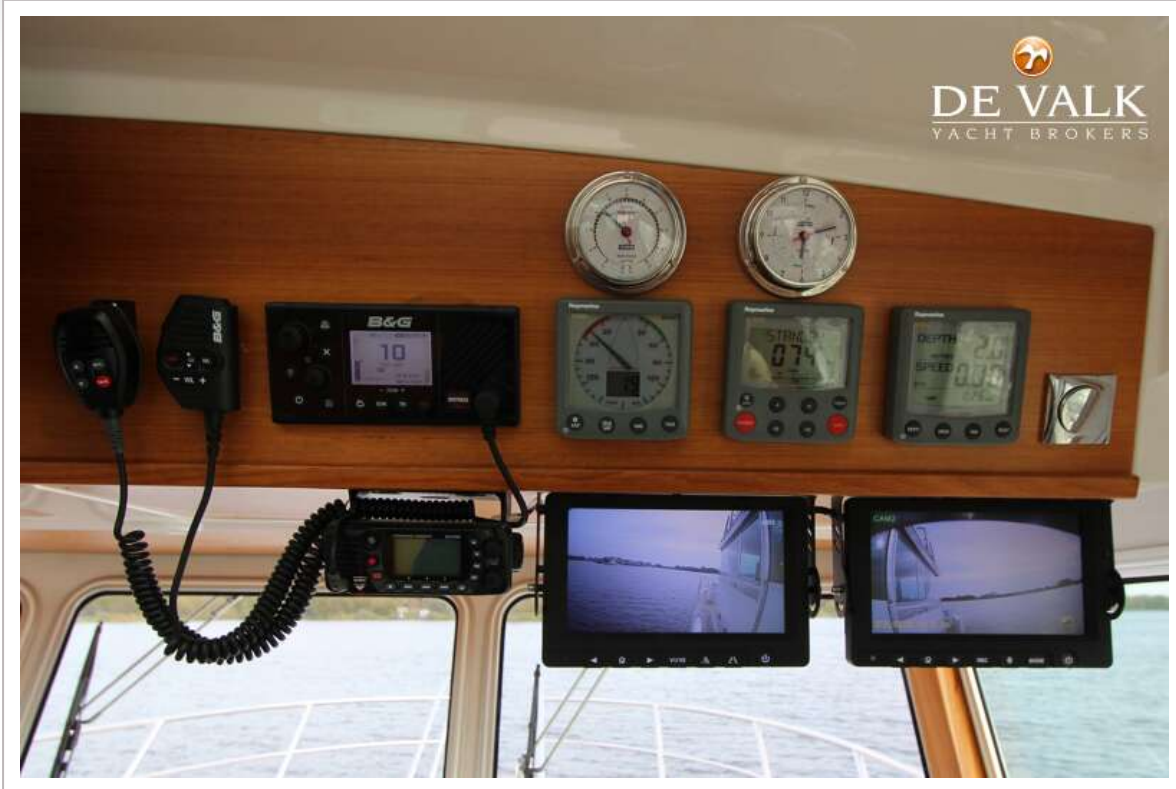
NORD STAR 37 PATROL



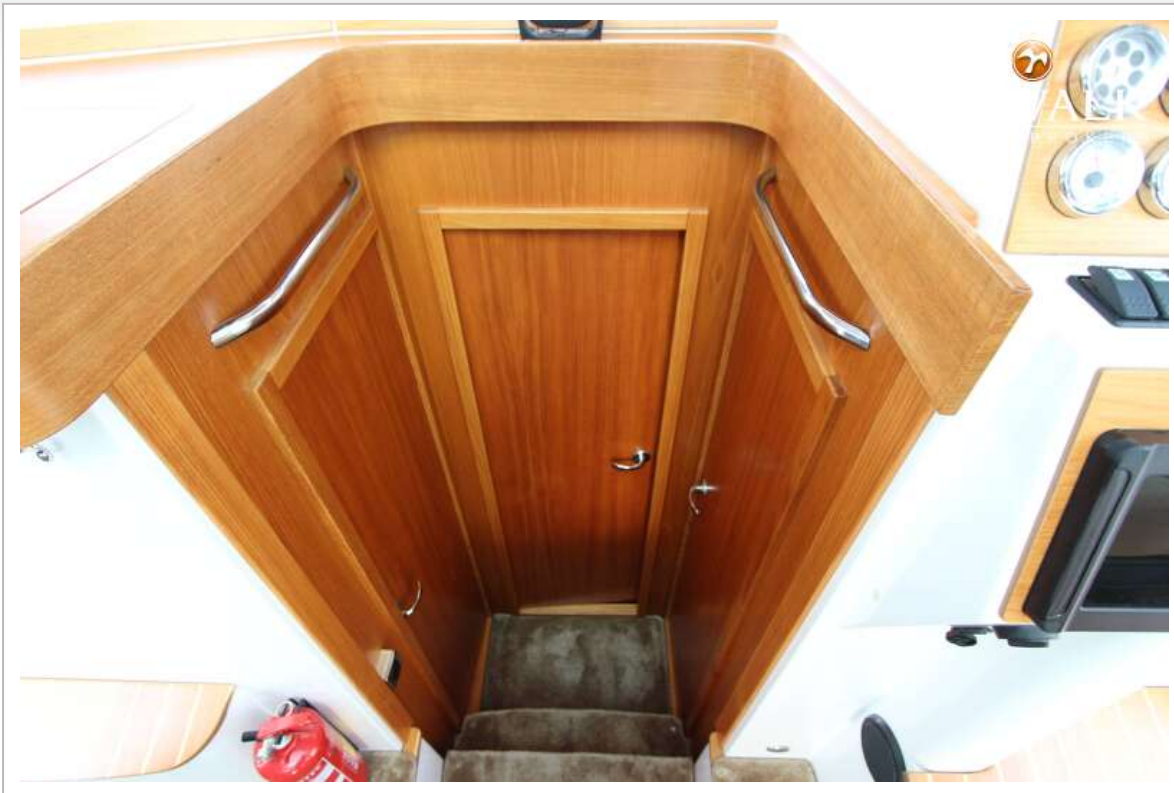
NORD STAR 37 PATROL



NORD STAR 37 PATROL



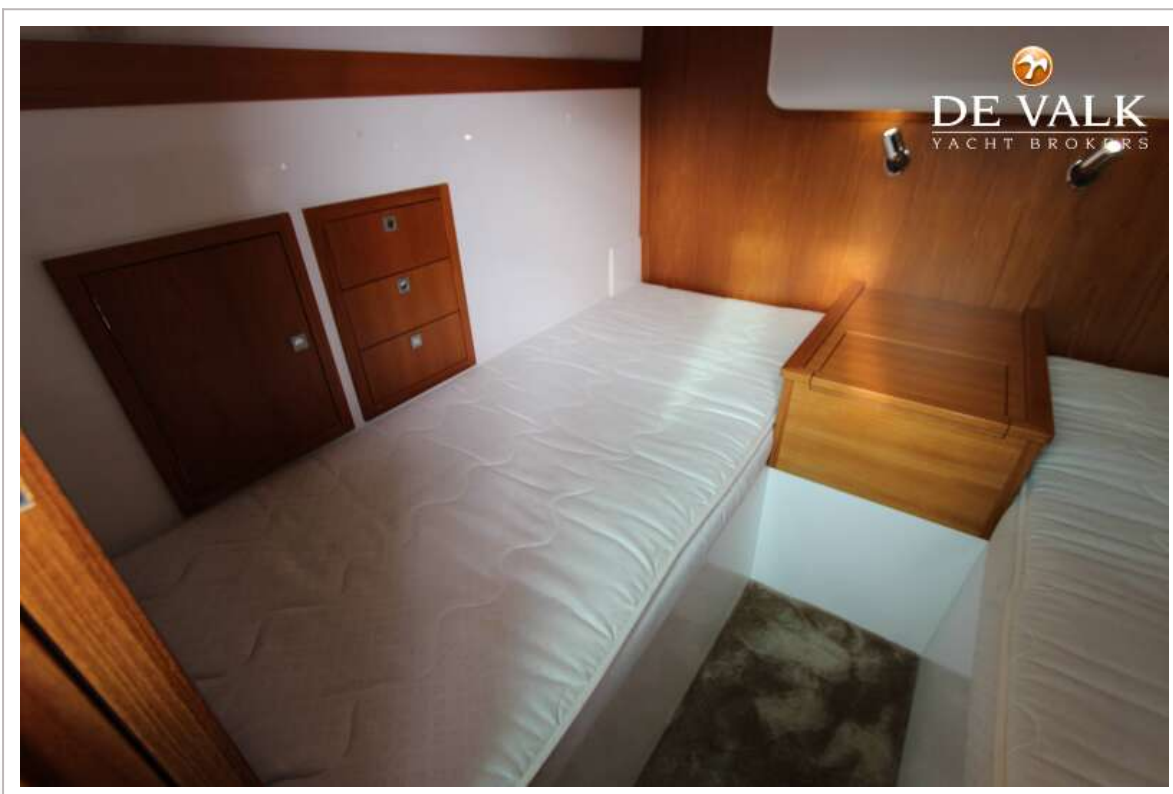
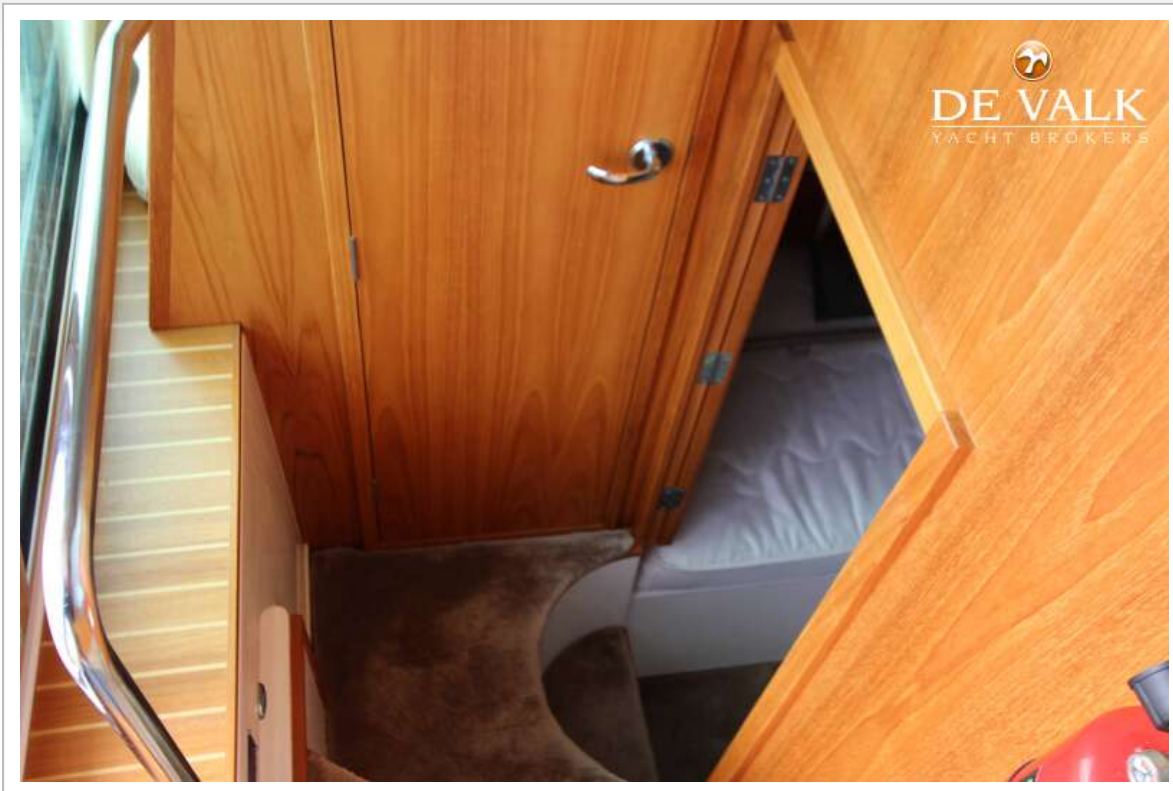
NORD STAR 37 PATROL



NORD STAR 37 PATROL



NORD STAR 37 PATROL



NORD STAR 37 PATROL



NORD STAR 37 PATROL



NORD STAR 37 PATROL

