



DE VALK  
YACHT BROKERS



SUNREEF 62



DE VALK  
YACHT BROKERS

## BROKER'S COMMENTS

The Sunreef 62 Capolino offers a perfect blend of elegance, comfort, and seaworthiness. Recent upgrades including a new generator, hull paint system, and sliding doors make her immediately ready to cruise. The interior is spacious and bright, ideal for extended stays on board. Outside, generous deck areas and a comfortable cockpit provide space for relaxation and entertaining. Known for her stability and smooth sailing performance, the Capolino is well suited for both coastal cruising and long passages. A complete and stylish catamaran, ready for her next owner.

*Jochem Heijermans*

## SPECIFICATIONS

<b>Dimensions</b>	18.28 x 9.30 x 1.60 (m)	<b>Builder</b>	Sunreef Yachts
<b>Built</b>	2006	<b>Cabins</b>	4
<b>Material</b>	GRP	<b>Berths</b>	10
<b>Engine(s)</b>	2 x Yanmar 4JH3-DTE diesel	<b>Hp/Kw</b>	2 x 123.00 (hp), 90.53 (kw)
<b>Asking price</b>	€ 795.000 (VAT Paid)	<b>Lying</b>	elsewhere / Not at sales office

## CONTACT

<b>Sales office</b>	De Valk Belgium	<b>Telephone</b>	+32 586 80 218
<b>Address</b>	1401 PT Nieuwpoort BE	<b>E-mail</b>	belgium@devalk.nl

## DISCLAIMER

These particulars are given in good faith as supplied but cannot be guaranteed.



## GENERAL

Model	SUNREEF 62
Type	catamaran sailing yacht
LOA (m)	18,28
Beam (m)	9,30
Draft (m)	1,60
Air draft (m)	27,00
Headroom (m)	2,00
Year built	2006
Builder	Sunreef Yachts
Country	Poland
Displacement (t)	41
Hull material	GRP
Hull colour	grey
Superstructure material	GRP
Deck material	GRP
Deck finish	teak
Superstructure deck finish	non-skid moulded in
Cockpit deck finish	teak
Antifouling (year)	2025
Window material	tempered glass (2015)
Deckhatch	14
Portholes	stainless steel
Fuel tank (litre)	stainless steel 2x 900
Level indicator (fuel tank)	yes
Fuel daytank (litre)	stainless steel 2x 70
Freshwater tank (litre)	polyethylene 400
Level indicator (freshwater)	yes
Blackwater tank (litre)	polyethylene 2x 80
Level indicator (blackwater)	yes
Blackwater tank extraction	deck extraction + pump



Wheel steering	hydraulic
Inside helm position	yes
Outside helm position	hydraulic
Emergency tiller	yes
More info on paintwork	Hull repainted awlgrip (2022)
Extra info	Trampolines (2019)
Extra info	New cockpit sliding doors (2018)

## ACCOMMODATION

Cabins	4
Berths	10
Crew cabin	2
Crew berths	2
Interior	birch Wenge
Floor	wood
Open cockpit	yes
Saloon	yes
Headroom saloon (m)	2,00
Heating	diesel ducted hot air Webasto
Air-conditioning	reverse cycle airco 60.000 BTU
Chart table	(2020)
Sliding door to cockpit	yes
Galley	yes
Countertop	plastic Composite
Sink	stainless steel 2x
Cooker	calor gas 4 burner
Oven	(2025)
Extractor	yes
Gas alarm	yes
Fridge	2x (whirlpool 2022)
Freezer	1x



Wine cooler	yes
Hot water system	220V + engine (2018)
Water pressure system	electrical
Dishwasher	Bosch (2023)
Owners cabin	double bed
Bed length (m)	2,00 x 1,60
Wardrobe	hanging and shelves
Bathroom	en suite
Toilet	en suite
Toilet system	electric Tecma
Wash basin	in the bathroom
Shower	en suite
Guest cabin 1	double bed
Bed length (m)	2.00 x 1.60
Wardrobe	hanging and shelves
Bathroom	en suite
Toilet	en suite Tecma
Toilet system	electric
Wash basin	in the bathroom
Shower	en suite
Guest cabin 2	bunk bed
Bed length (m)	2,00 x 0,70
Wardrobe	hanging and shelves
Bathroom	en suite
Toilet	en suite Tecma
Toilet system	electric
Wash basin	in the bathroom
Guest cabin 3	bunk bed
Bed length (m)	2,00 x 0,75 - 2,00 x 0,50
Wardrobe	hanging and shelves
Toilet	en suite
Toilet system	electric Tecma



Wash basin	in the bathroom
Shower	en suite
Washing machine	Bosch serie 6 (2023)

## MACHINERY

No of engines	2
Make	Yanmar
Type	4JH3-DTE
HP	123
kW	90.53
Fuel	diesel
Year installed	2006
Maximum speed (kn)	12
Cruising speed (kn)	8
Consumption (l/hr)	15
Engine hours	5850
Engine cooling system	freshwater heat exchanger
Drive	shaft
Engine controls	electrical 2x ZF (commander steering 2018)
Gearbox	hydraulic
Exhaust	watercooled
Thrust bearing	yes
Propeller type	folding
Propeller blades	3
Propeller shaft material	stainless steel
Shaft lubrication	water
Manual bilge pump	yes
Electric bilge pump	yes
Bilge alarm	yes
Electrical installation	12V/24V/220V
Generator	silent separator Mass 16Kva 2024



Running hours generator	150
Start battery	2x 12V/140AH 2024
Service battery	2x 24V/440Ah
Generator battery	yes
Battery monitor	Mastervolt
Inverter	yes
Battery charger/inverter	Mass combi 24V/4000W/120Ah
Shorepower	with cable
Watermaker	220V 220l/hour & 24V 90l/hour

## NAVIGATION

Electric compass	On autopilot
Depth sounder	Raymarine
Depth sounder/log	Raymarine ST60
Log	Raymarine
Windset	Raymarine ST60+
Repeater	yes
VHF	Raymarine
Rudder angle indicator	On autopilot
Radar/GPS/plotter	2x raymarine E80
AIS transponder	Raymarine
Navigation lights	yes

## EQUIPMENT

Sprayhood	Flybridge
Cockpit cover	yes
Bimini	(2022)
Cockpit cushions	(2015)
Cockpit table	(2017)
Cockpit chairs	4x
Boarding ladder	yes



Transom door	yes
Gangway	(2020)
Deck shower	yes
Anchor	Rocna Rocna 55
Anchor chain	120m
Anchor 2	yes
Windlass	electrical
Deck wash	yes
Dinghy	rigid hull Lomac 430 - Tubes (2015)
Outboard	Yamah 40
Sea railing	wire
Grab rail (superstructure)	stainless steel
Railing side opening gates	2x
Pushpit	yes
Pulpit	yes
Life raft	container 2x
Life raft (pers)	6
Horn	yes
Fenders	yes
Mooring lines	yes
TV	yes
TracVision ball	yes
Surround Sound System	yes

## RIGGING

Rigging	sloop
Standing rigging	Dyform Inspected (2025)
Brand mast	Sunreef
Material mast	carbon
Mainsail cover	(2017)
Fully battened mainsail	Northsails Dacron (2020)



Genoa	One sails Dacron (2022)
Genoa furler	yes
Gennaker	(2012)
Staysail	Northsails (2012)
Reefing System	slabreefing
Primary sheet winch	Electric
Secondary sheet winch	Electric
Genoa sheetwinches	Electric





BROKERAGE | CHARTER | BERTHS | FINANCE | INSURANCE | YACHT MANAGEMENT

**DE VALK**  
YACHT BROKERS



**This yacht will be auctioned,  
for further details please visit [www.devalk.nl](http://www.devalk.nl)**

**Dit schip zal worden geveild,  
voor meer informatie gaat u naar [www.devalk.nl](http://www.devalk.nl)**

**Dieses Schiff wird versteigert,  
für weitere informationen besuchen Sie [www.devalk.nl](http://www.devalk.nl)**

[WWW.DEVALK.NL](http://WWW.DEVALK.NL)



**DE VALK**  
YACHT BROKERS



# SUNREEF 62



# SUNREEF 62



## SUNREEF 62



## SUNREEF 62



## SUNREEF 62



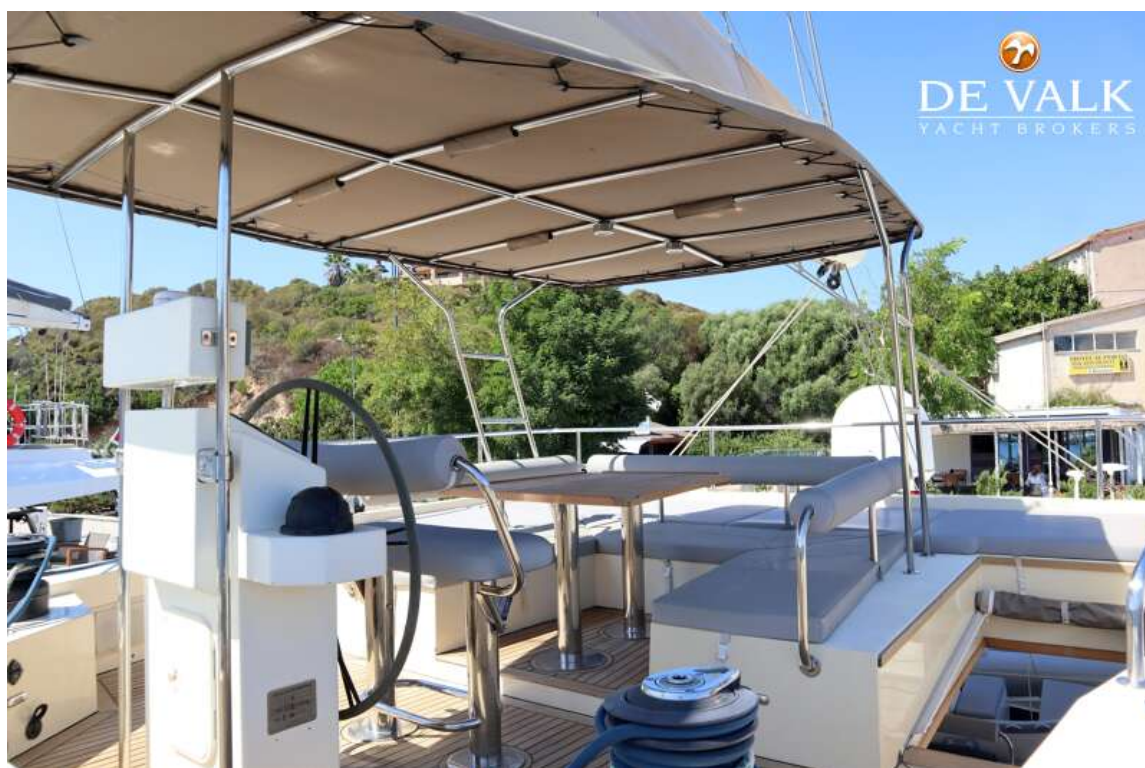
## SUNREEF 62



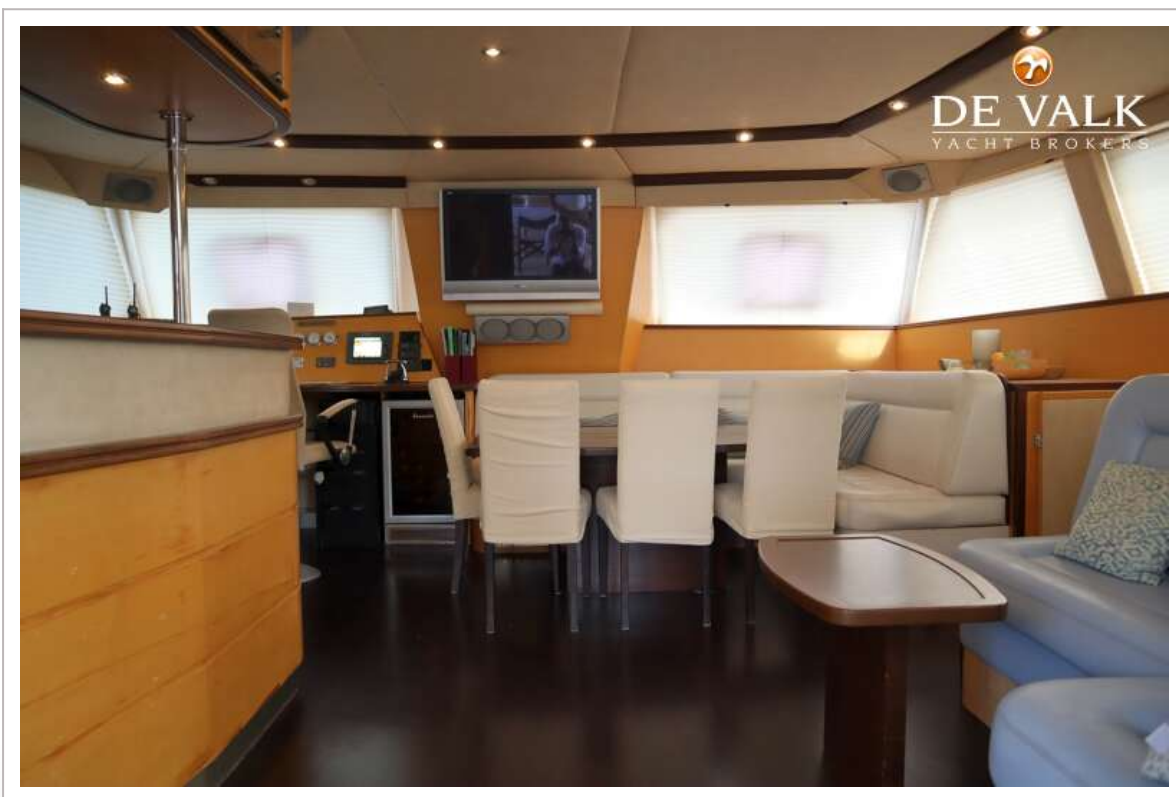
# SUNREEF 62



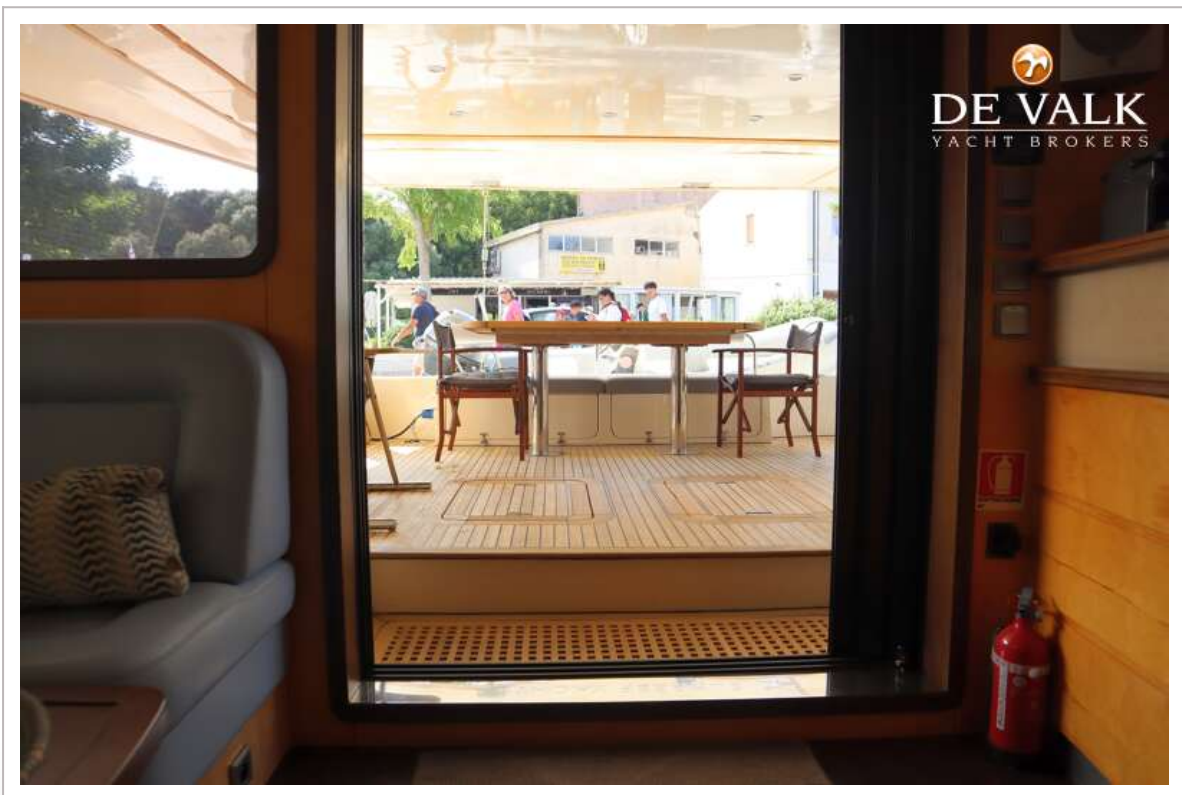
## SUNREEF 62



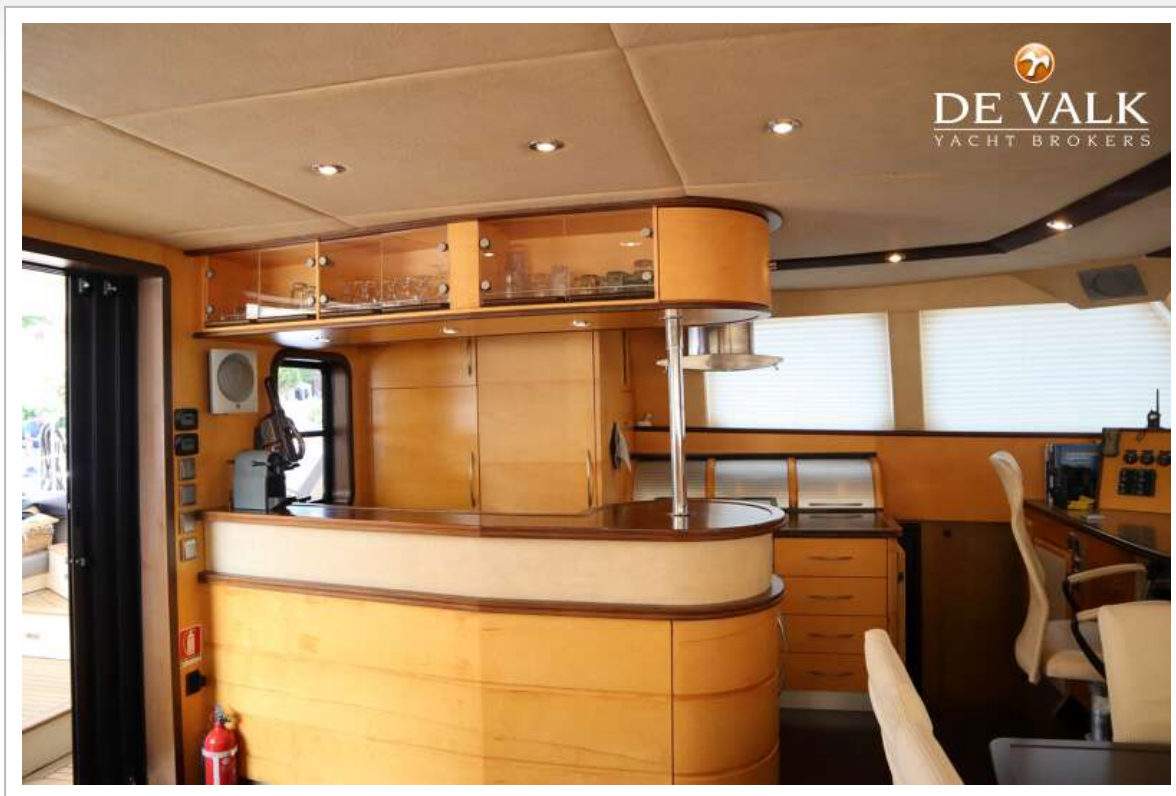
## SUNREEF 62



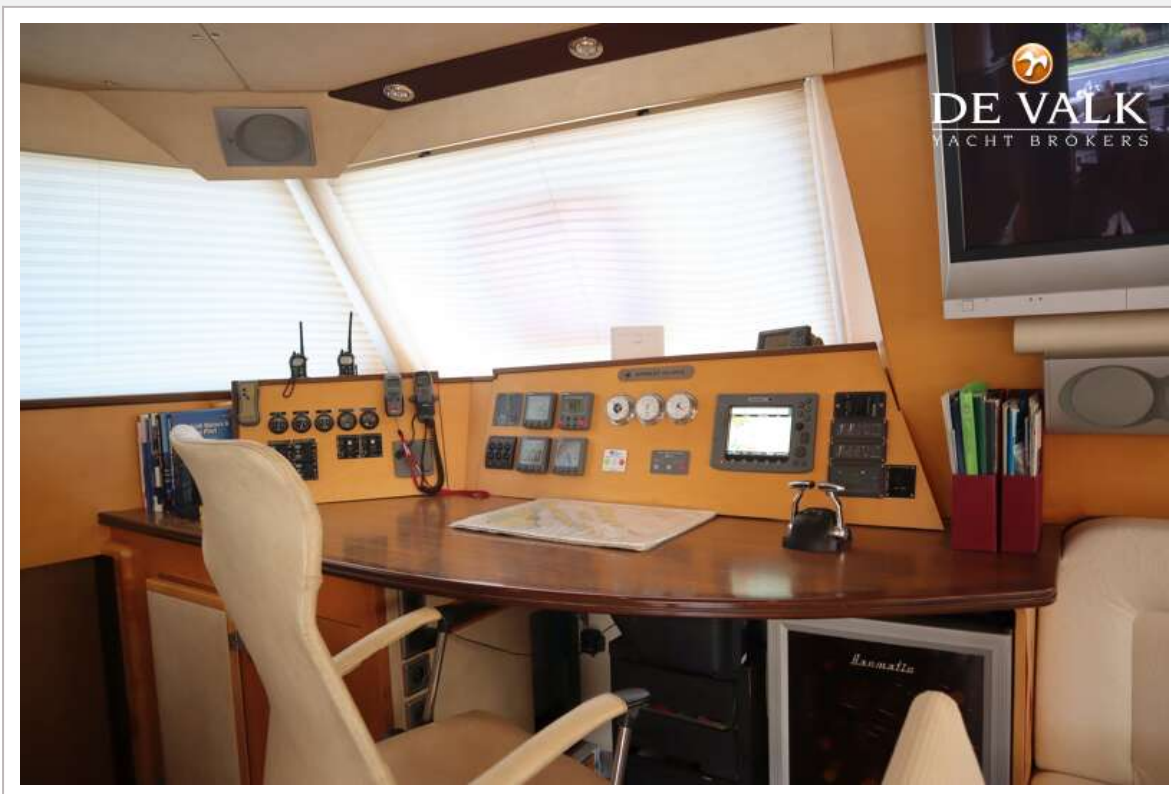
## SUNREEF 62



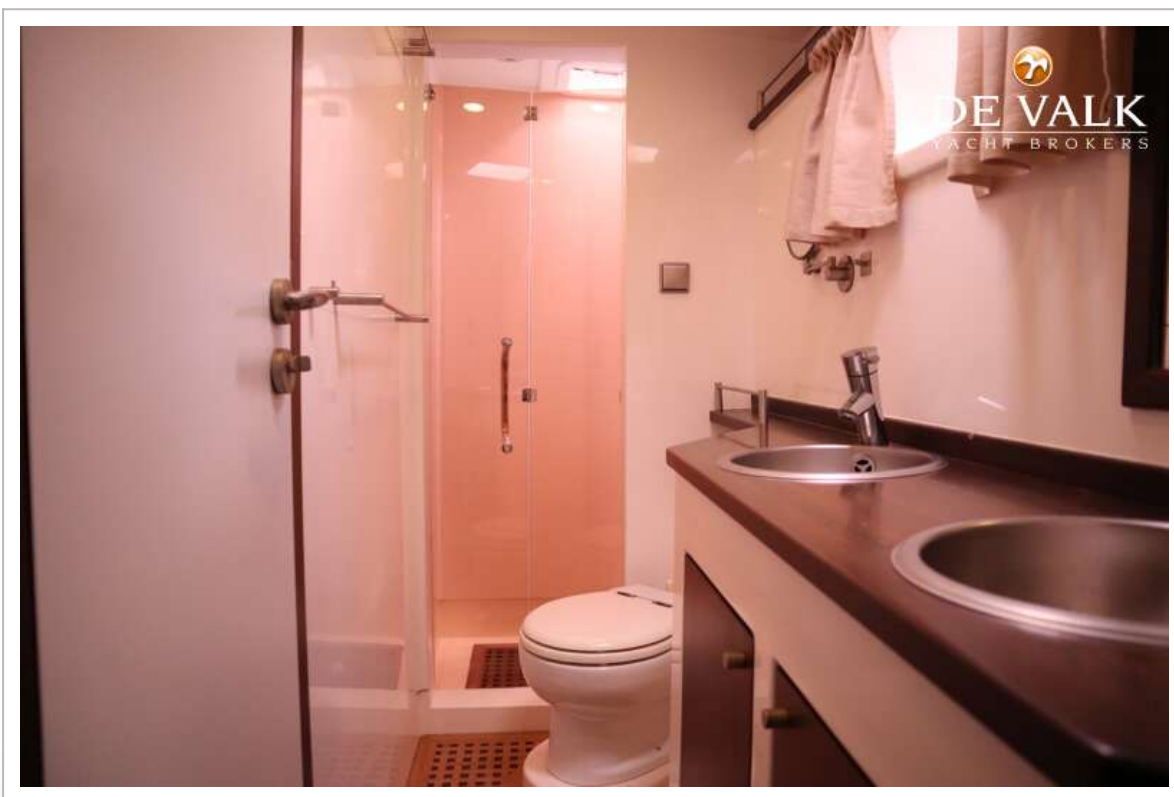
## SUNREEF 62



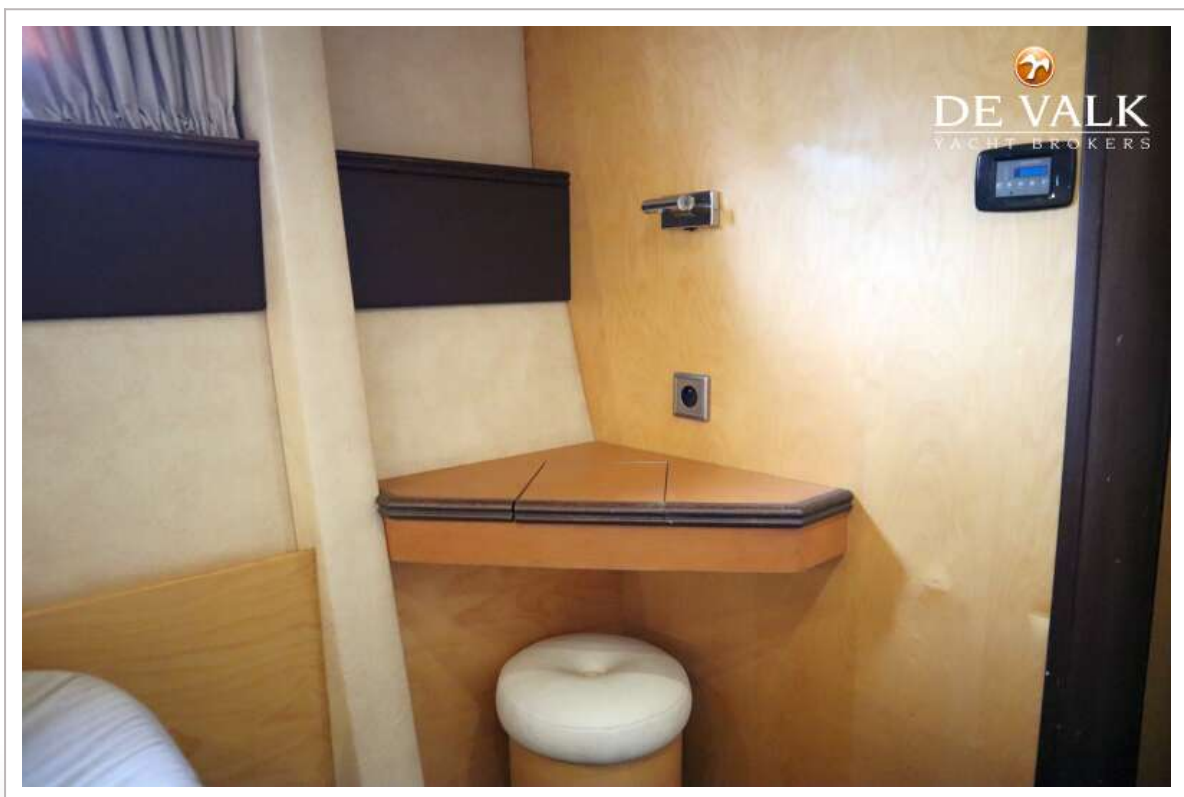
## SUNREEF 62



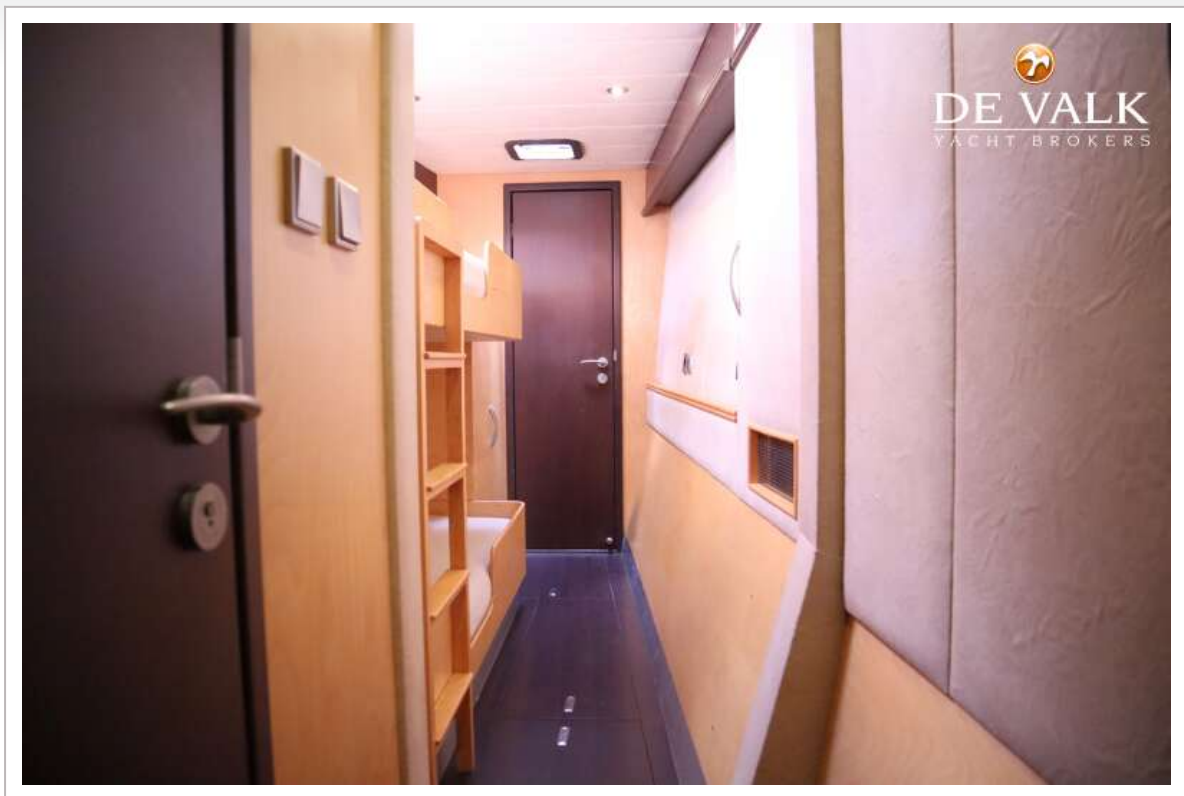
## SUNREEF 62



## SUNREEF 62







## SUNREEF 62



## SUNREEF 62

