



ABIM CLASSIC 128 EXCLUSIVE

## BROKER'S COMMENTS

The Abim 128 is a lovingly maintained cruising yacht, equipped with practical features and details for long journeys. It offers comfortable accommodation for four people. In excellent visual and technical condition, it is a good choice for owners seeking an outstanding displacement yacht.

*Ralph Weil*

## SPECIFICATIONS

<b>Dimensions</b>	12.82 x 4.25 x 1.00 (m)	<b>Builder</b>	Abim
<b>Built</b>	2013	<b>Cabins</b>	2
<b>Material</b>	Steel	<b>Berths</b>	4
<b>Engine(s)</b>	1 x Volvo-Penta D3-150 diesel	<b>Hp/Kw</b>	150.00 (hp), 110.40 (kw)
<b>Asking price</b>	€ 329.000 (VAT Paid)	<b>Lying</b>	contact Berlin

## CONTACT

<b>Sales office</b>	De Valk Berlin	<b>Telephone</b>	+49 30 325 99 651
<b>Address</b>	Siegfried-Berger Str.13 12557 Berlin DE	<b>E-mail</b>	berlin@devalk.nl

## DISCLAIMER

These particulars are given in good faith as supplied but cannot be guaranteed.



# ABIM CLASSIC 128 EXCLUSIVE

## GENERAL

Model	ABIM CLASSIC 128 EXCLUSIVE
Type	motor yacht
LOA (m)	12,82
Beam (m)	4,25
Draft (m)	1,00
Air draft (m)	4,50
Air draft min (m)	2,45
Headroom (m)	2,10
Year built	2013
Launched	yes
Builder	Abim
Country	The Netherlands
Displacement (t)	15
CE norm	B
Hull material	steel
Hull colour	beige
Hull shape	hard chine
Keel type	long keel
Superstructure material	steel
Rubbing strake	fender rope
Deck material	steel
Deck finish	cork
Superstructure deck finish	paint
Cockpit deck finish	cork
Antifouling (year)	2024
Window frame	aluminium
Window material	tempered glass
Deckhatch	with mosquito screen
Portholes	aluminium Mosquito screen/hor/Fliegengitter
Insulation	foam 30mm PU



<b>Mast can be lowered</b>	electric
<b>Fuel tank (litre)</b>	stainless steel 750
<b>Level indicator (fuel tank)</b>	Analog
<b>Freshwater tank (litre)</b>	stainless steel 750
<b>Level indicator (freshwater)</b>	Analog
<b>Blackwater tank (litre)</b>	polyethylene 225
<b>Level indicator (blackwater)</b>	Analog
<b>Blackwater tank extraction</b>	deck extraction + pump
<b>Wheel steering</b>	hydraulic
<b>Extra info</b>	wide stairs to the bathing platform

## ACCOMMODATION

<b>Cabins</b>	2
<b>Berths</b>	4
<b>Interior</b>	cherry
<b>Floor</b>	wood Kirsche
<b>Aft deck</b>	with large locker and cork floor
<b>Headroom saloon (m)</b>	2,00
<b>Heating</b>	diesel ducted hot air 5 kW Eberspächer
<b>Air-conditioning</b>	reverse cycle airco Achterkajüte / aft cabin / achterkajuit
<b>Aft Cabin</b>	yes
<b>Dinette</b>	yes
<b>Opening door to cockpit</b>	yes
<b>Galley</b>	yes
<b>Countertop</b>	corian
<b>Sink</b>	stainless steel
<b>Cooker</b>	induction 4 Flammen
<b>Microwave/oven combi</b>	Casio
<b>Fridge</b>	1 x 180 l incl. freezer 1 x 30 l drawer
<b>Hot water system</b>	220V + engine 75 l. Boiler
<b>Water pressure system</b>	electrical



Hot water tap	yes
Coffee maker	yes
Owners cabin	double bed
Bed length (m)	2,00 x 1,80
Wardrobe	hanging/drawers/shelves
Toilet	separate
Toilet system	electric
Wash basin	in the bathroom
Shower	separate
Extra info	TV in der AK
Guest cabin 1	bunk bed
Bed length (m)	1,90
Wardrobe	yes
Washing machine/dryer combi	in bathroom

## MACHINERY

No of engines	1
Make	Volvo-Penta
Type	D3-150
HP	150
kW	110.40
Fuel	diesel
Year installed	2013
Maximum speed (kn)	12
Cruising speed (kn)	10
Engine hours	2500
Engine cooling system	freshwater heat exchanger
Drive	shaft
Engine controls	electrical
Bowthruster	electric 95 kgf with remote control
Sternthruster	electric 95 kgf with remote control



Exhaust	watercooled
Propeller type	fixed
Propeller blades	4
Shaft lubrication	water
Manual bilge pump	yes
Electric bilge pump	yes
Electrical installation	Shore connection with adjustable power consumption
Generator	Fischer Panda 5000i
Running hours generator	50
Start battery	yes
Service battery	yes
Battery monitor	Phillippi
Battery charger	Sterling Pro Charge Ultra for Bow/Sternthruster Batterie
Battery charger/inverter	Victron Quattro 12V/3.000W/120Ah
Shorepower	with cable
Insulation transformer	Victron
Extra info	The generator sometimes only starts after several attempts
Extra info	Double diesel filters switchable
Extra info	Double cooling water filters switchable

## NAVIGATION

Compass	yes
Multi control display	yes
Depth sounder	yes
Log	yes
VHF	Garmin
Rudder angle indicator	yes
Plotter/GPS	Garmin
Electronis chart(s)	yes
Navigation lights	yes
Searchlight	remote controll



## EQUIPMENT

Fixed windscreen	yes
Sprayhood	Elaborately crafted, variable opening, with rails for lowering the entire top. Sun visor on the top windows at the helm.
Winter cover	custom-made across the entire ship with wooden substructure
Window cover	small tarpaulin that covers the helm station and companionway to the salon.
Cockpit cushions	yes
Cockpit table	yes
Cockpit chairs	yes
Bathing platform	cork flooring
Boarding ladder	stainless steel Custom-made, extra wide with high handrails, 4 steps
Transom door	yes
Bow ladder	stainless steel
Gangway	yes
Deck shower	yes
Anchor	20 KG Edelstahl
Anchor chain	stainless steel 30 m
Anchor 2	yes
Anchor chain	Folding anchor 10KG with 20m line in stainless steel holder on the bathing platform
Deck wash	yes
Sea railing	stainless steel
Grab rail (superstructure)	stainless steel
Railing side opening gates	yes
Wiper	3 x Parallel
Horn	electric
Fenders	yes
Mooring lines	yes
Spare parts	yes
TV	In Salon mit Bose TV Sound 2.TV in der AK



# ABIM CLASSIC 128 EXCLUSIVE

TV receiver	yes
Radio	yes
Speakers in salon	yes
Clock - barometer	yes
Extra info	yes
Extra info	folding bike Bocas FB 700





# ABIM CLASSIC 128 EXCLUSIVE



# ABIM CLASSIC 128 EXCLUSIVE





# ABIM CLASSIC 128 EXCLUSIVE



# ABIM CLASSIC 128 EXCLUSIVE





# ABIM CLASSIC 128 EXCLUSIVE



# ABIM CLASSIC 128 EXCLUSIVE





# ABIM CLASSIC 128 EXCLUSIVE



## ABIM CLASSIC 128 EXCLUSIVE





# ABIM CLASSIC 128 EXCLUSIVE





# ABIM CLASSIC 128 EXCLUSIVE

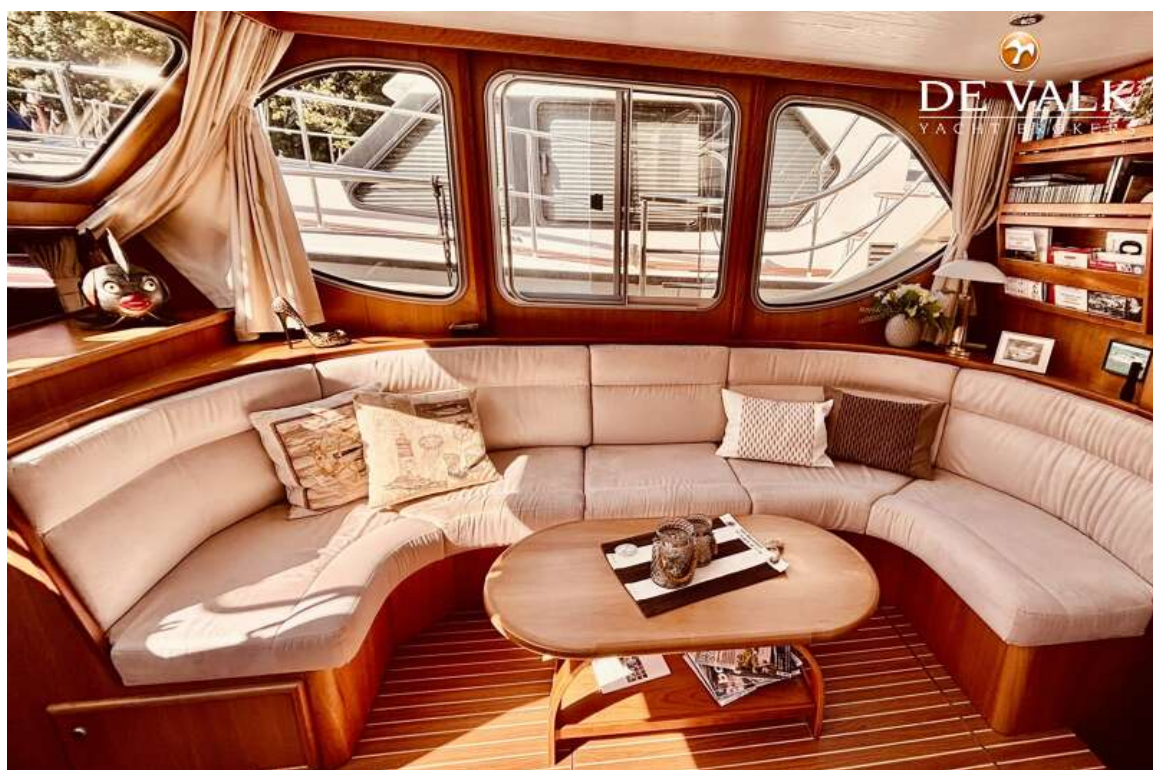


## ABIM CLASSIC 128 EXCLUSIVE





## ABIM CLASSIC 128 EXCLUSIVE





# ABIM CLASSIC 128 EXCLUSIVE



## ABIM CLASSIC 128 EXCLUSIVE

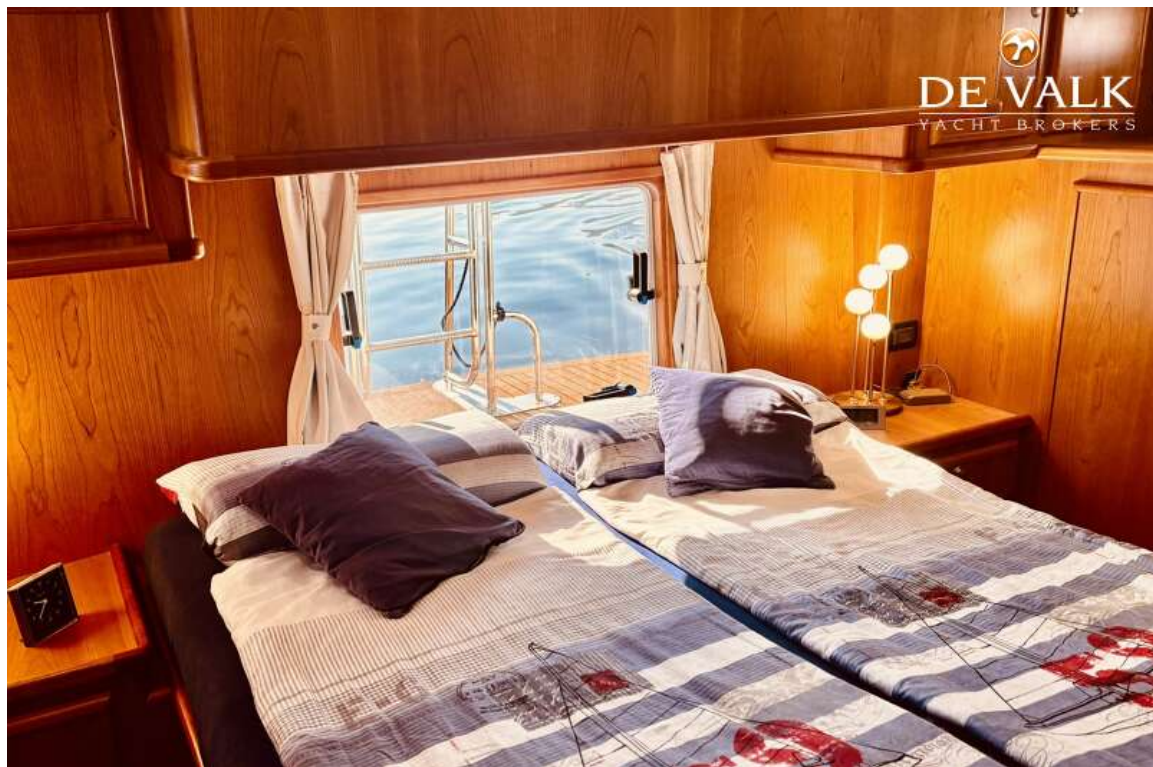




## ABIM CLASSIC 128 EXCLUSIVE

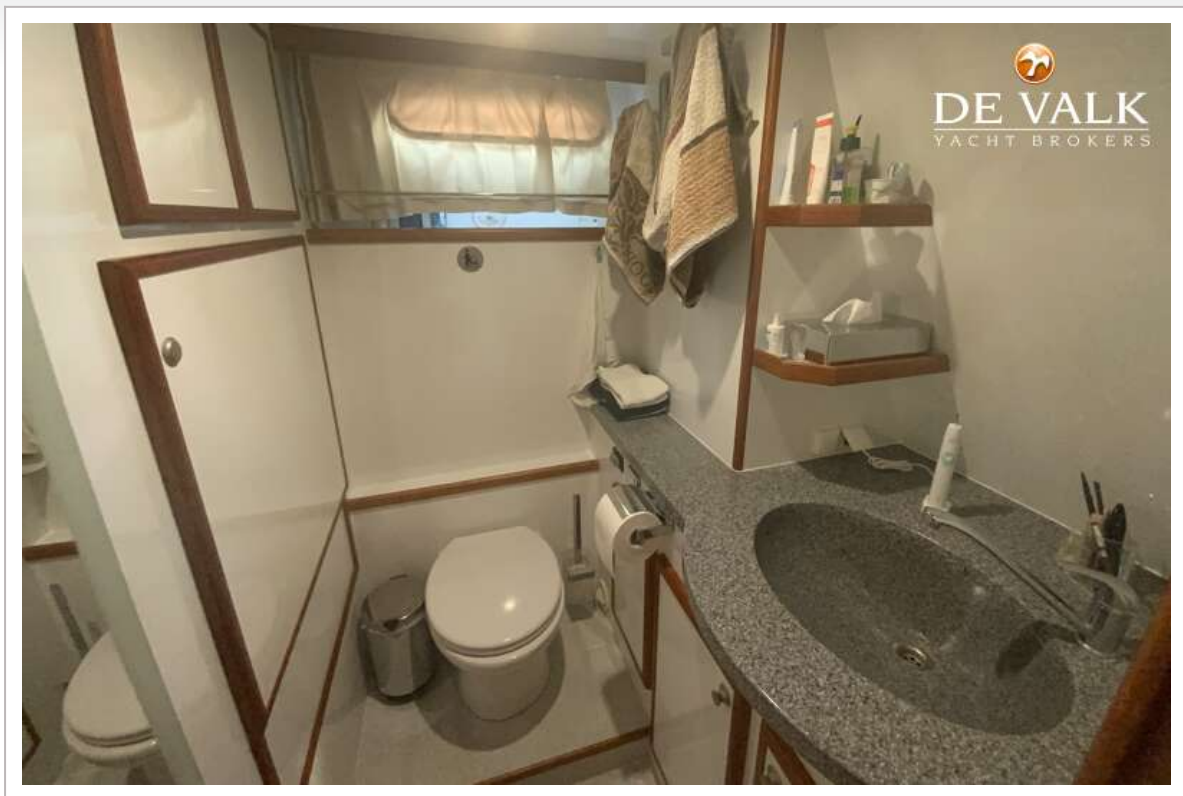


## ABIM CLASSIC 128 EXCLUSIVE





## ABIM CLASSIC 128 EXCLUSIVE



## ABIM CLASSIC 128 EXCLUSIVE

