



DE VALK  
YACHT BROKERS

## BEAUFORT 16 KETCH



DE VALK  
YACHT BROKERS

# BEAUFORT 16 KETCH

## BROKER'S COMMENTS

The Beaufort 16 is a classic cruising ketch designed by the notable naval architect J.J. Herbulot and built in France in 1974. Beaufort 16 Ketch is a finely crafted, elegant sailing yacht—built with both style and seaworthiness in mind. With its teak finishes, reliable engine & spacious layout, it's a classic cruiser for long-range & comfortable sailing.

*Sofia Iliia-Salvanou*

## SPECIFICATIONS

<b>Dimensions</b>	16.00 x 4.00 x 2.10 (m)	<b>Builder</b>	SEC St. Mandrier - Architect: Galliant
<b>Built</b>	1974	<b>Cabins</b>	3
<b>Material</b>	Wood Epoxy	<b>Berths</b>	8
<b>Engine(s)</b>	1 x PERKINS diesel	<b>Hp/Kw</b>	66.00 (hp), 48.58 (kw)
<b>Asking price</b>	€ 139.000 (VAT Paid)	<b>Lying</b>	elsewhere / Not at sales office

## CONTACT

<b>Sales office</b>	De Valk Corfu	<b>Telephone</b>	(+30) 266 111 8095
<b>Address</b>	New Port of Corfu, near Gouvia Marina 490 83 Corfu GR	<b>E-mail</b>	corfu@devalk.nl

## DISCLAIMER

These particulars are given in good faith as supplied but cannot be guaranteed.



# BEAUFORT 16 KETCH

## GENERAL

Model	BEAUFORT 16 KETCH
Type	sailing yacht
LOA (m)	16,00
Beam (m)	4,00
Draft (m)	2,10
Year built	1974
Builder	SEC St. Mandrier - Architect: Galliant
Country	France
Designer	J.J. Herbulot
Hull material	wood epoxy
Hull colour	off-white
Deck material	wood epoxy
Deck finish	teak
Cockpit deck finish	teak
Window frame	aluminium
Window material	glass
Deckhatch	yes
Portholes	yes
Fuel tank (litre)	yes
Blackwater tank (litre)	yes
Wheel steering	yes
Outside helm position	yes

## ACCOMMODATION

Cabins	3
Berths	8
Floor	teak
Saloon	yes
Air-conditioning	yes
Dinette	yes



# BEAUFORT 16 KETCH

Opening door to cockpit	yes
Galley	yes
Countertop	yes
Sink	yes
Cooker	yes
Oven	yes
Fridge	yes
Hot water system	yes
Crockery	yes
Owners cabin	double bed
Bathroom	yes
Toilet	yes
Wash basin	yes
Shower	yes
Guest cabin 1	double bed
Wardrobe	yes
Bathroom	yes
Toilet	yes
Wash basin	yes
Shower	yes
Guest cabin 2	double bed
Wardrobe	yes
Bathroom	yes
Toilet	yes
Wash basin	yes
Shower	yes

## MACHINERY

No of engines	1
Make	PERKINS
HP	66



# BEAUFORT 16 KETCH

kW	48.58
Fuel	diesel
Drive	shaft
Propeller type	fixed
Propeller shaft material	stainless steel
Generator	yes
Batteries	yes
Start battery	yes
Service battery	yes
Shorepower	yes
Watermaker	yes

## NAVIGATION

Compass	yes
Depth sounder	yes
VHF	yes
Autopilot	yes
Radar	yes
Plotter/GPS	yes
Navigation lights	yes

## EQUIPMENT

Sun awning	yes
Cockpit cushions	yes
Cockpit table	yes
Boarding ladder	yes
Gangway	yes
Anchor	yes
Anchor chain	yes
Lifejackets	yes
Fenders	yes



# BEAUFORT 16 KETCH

## RIGGING

Rigging	yes
Mainsail	yes
Mizzen	yes
Genoa	yes
Multifunctional winches	yes





# BEAUFORT 16 KETCH





# BEAUFORT 16 KETCH





# BEAUFORT 16 KETCH





# BEAUFORT 16 KETCH





# BEAUFORT 16 KETCH



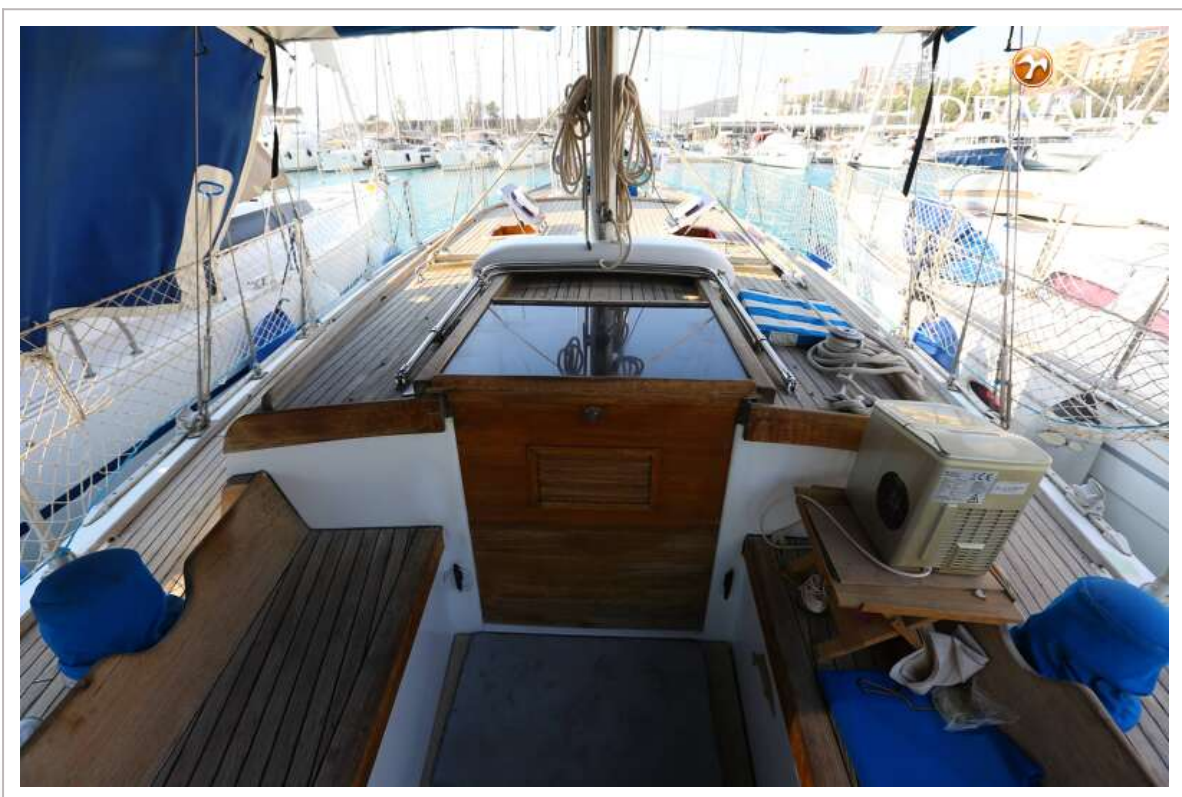


# BEAUFORT 16 KETCH



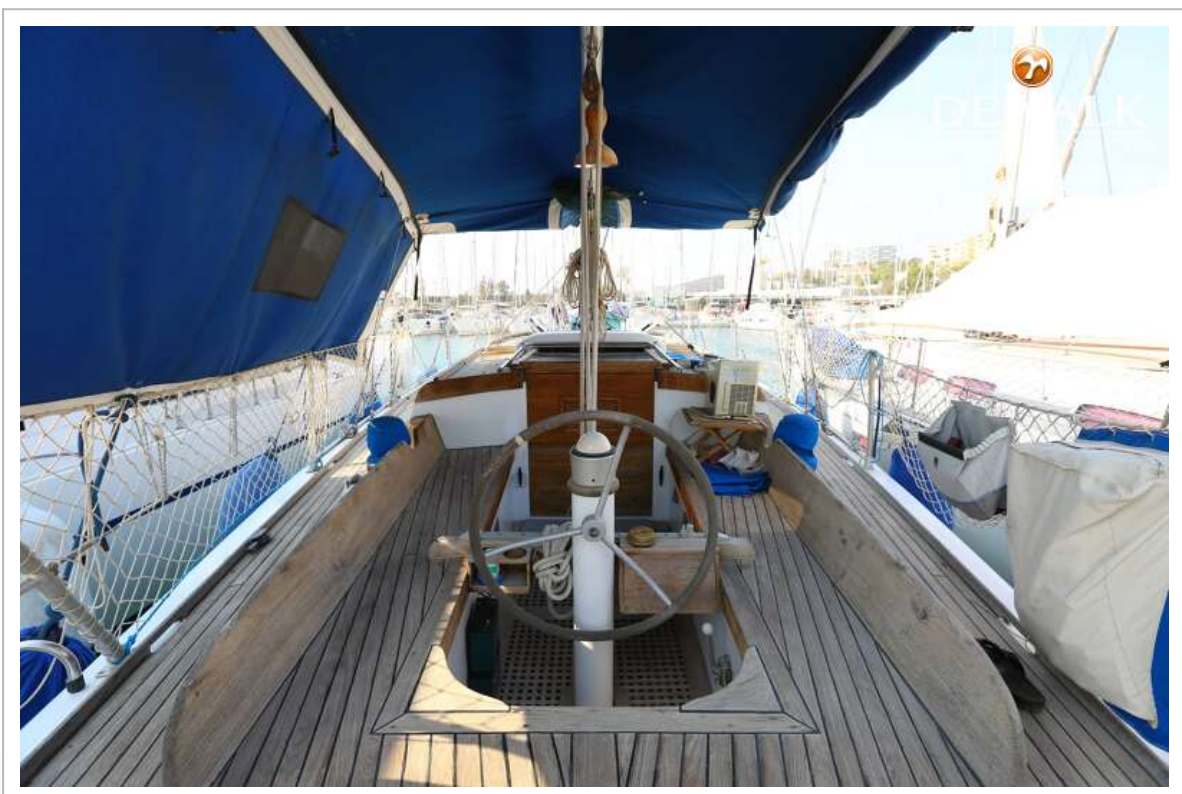
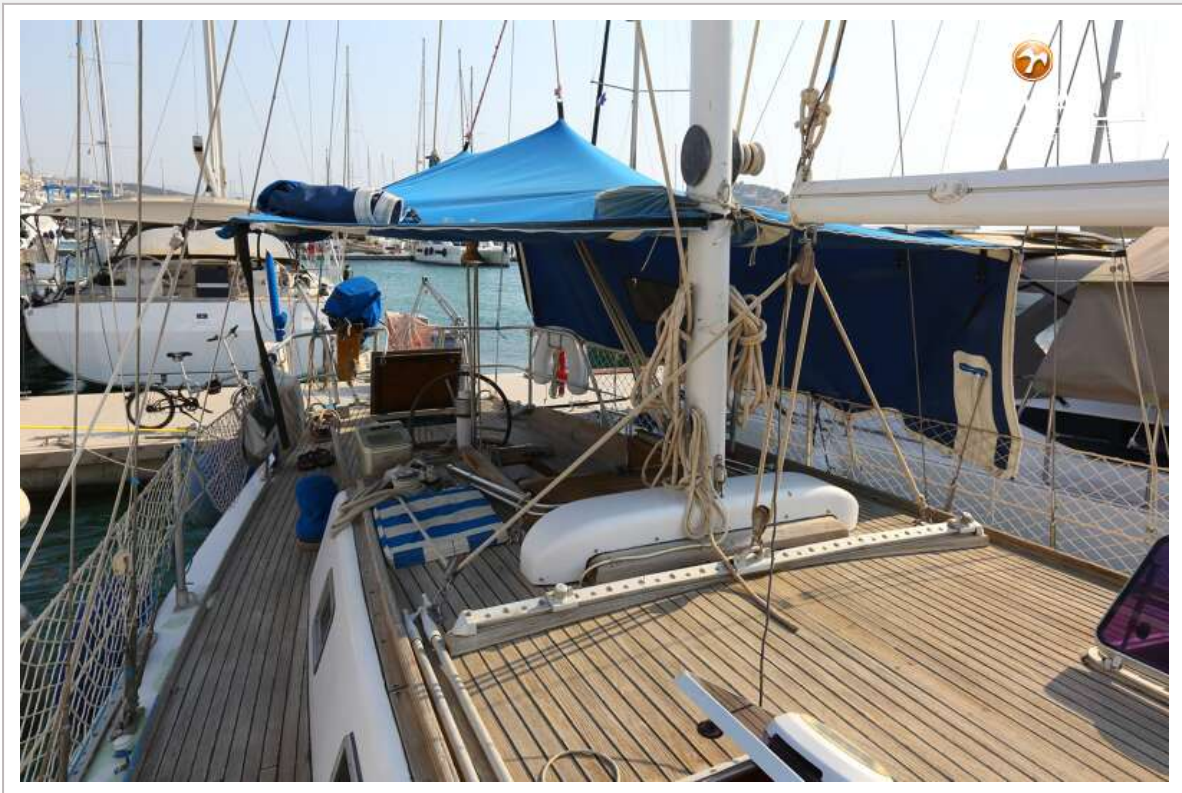


# BEAUFORT 16 KETCH





# BEAUFORT 16 KETCH



# BEAUFORT 16 KETCH



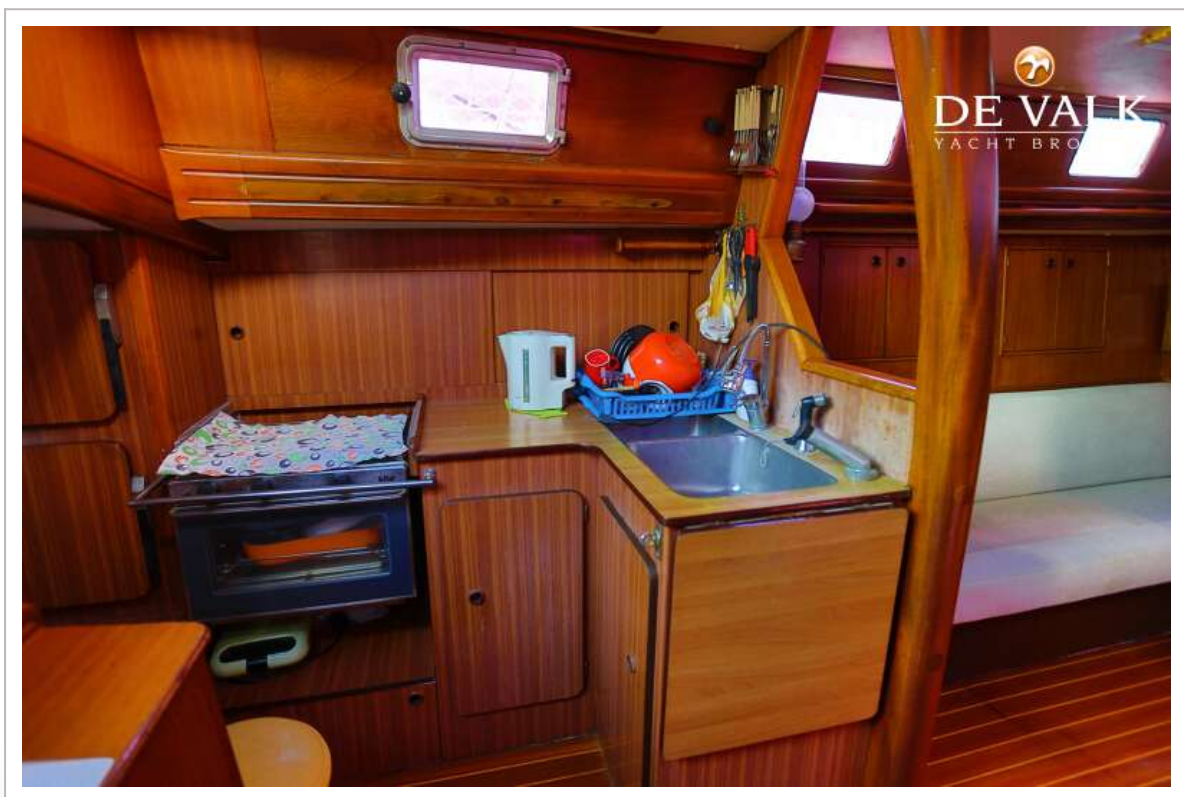


# BEAUFORT 16 KETCH

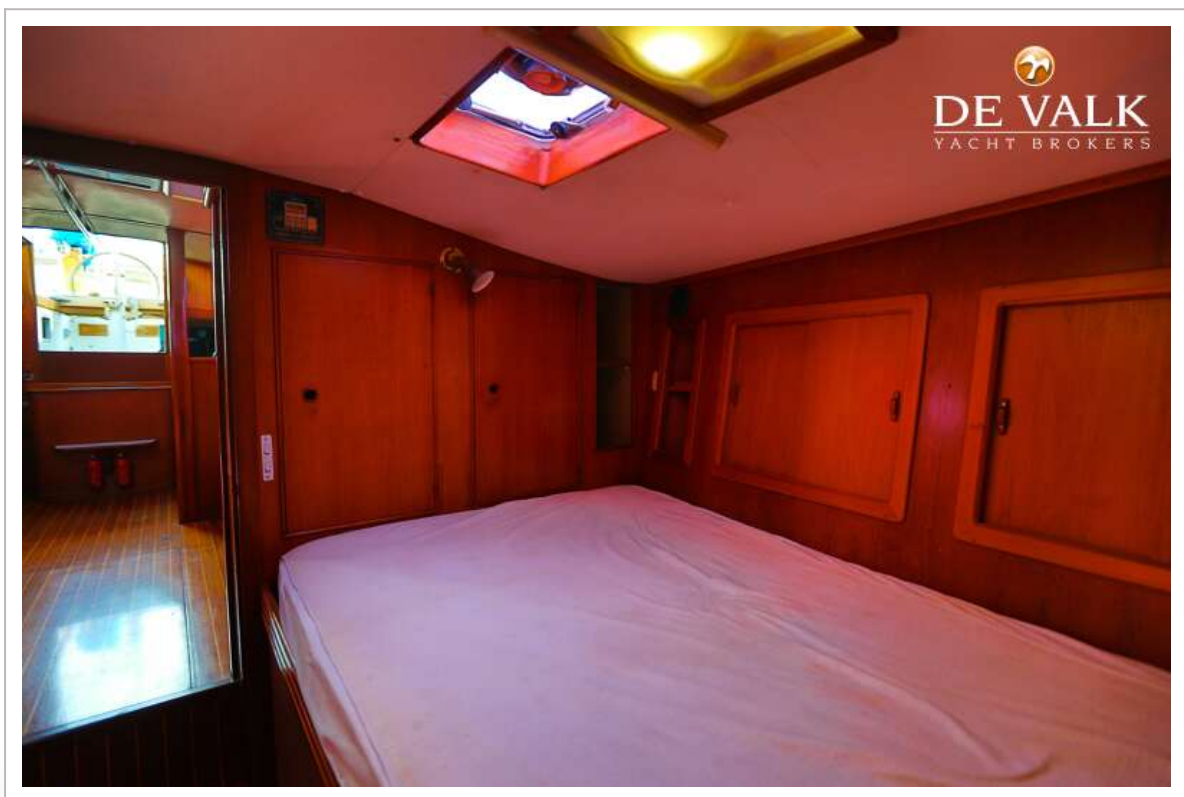
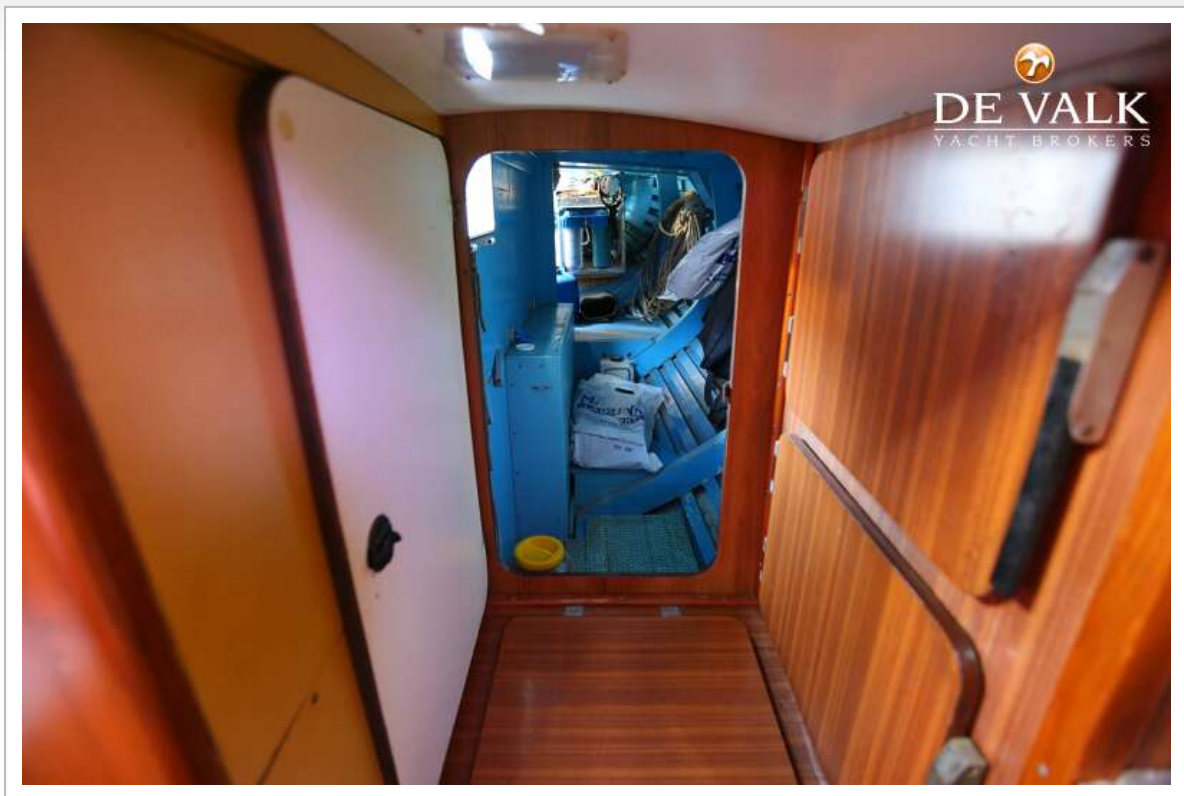




# BEAUFORT 16 KETCH



# BEAUFORT 16 KETCH

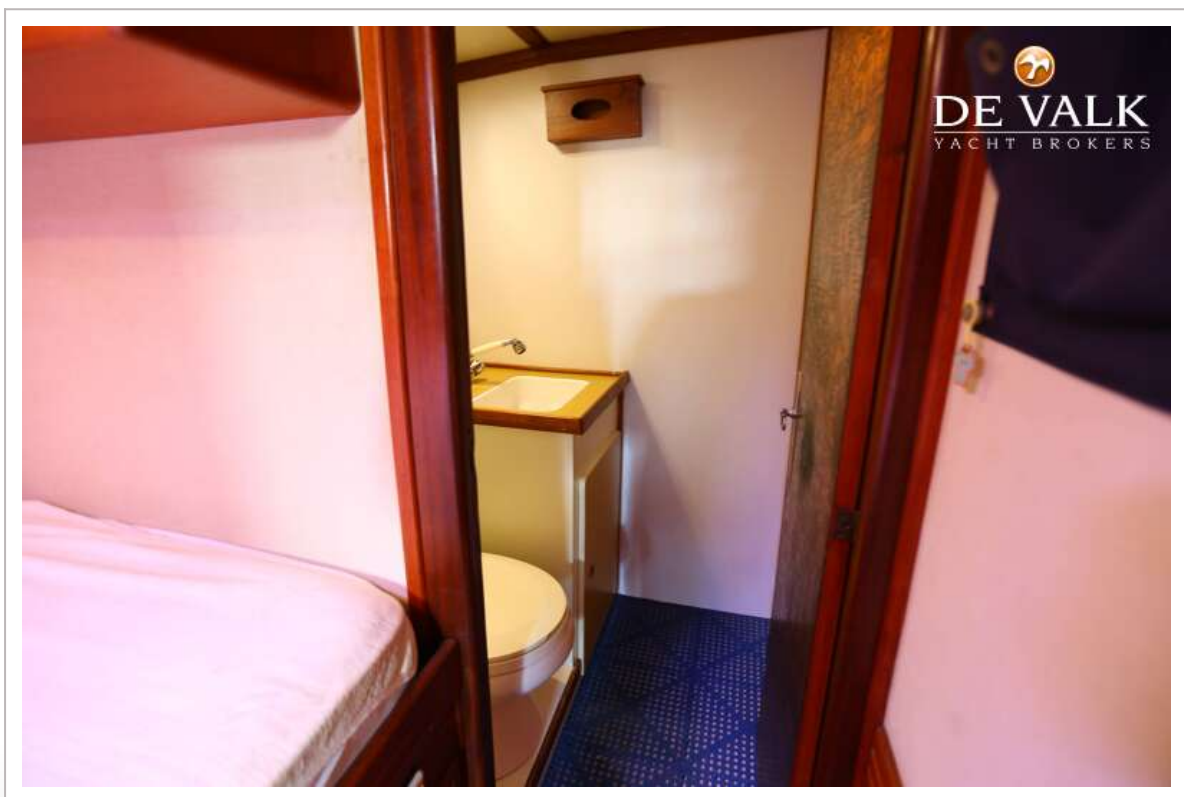
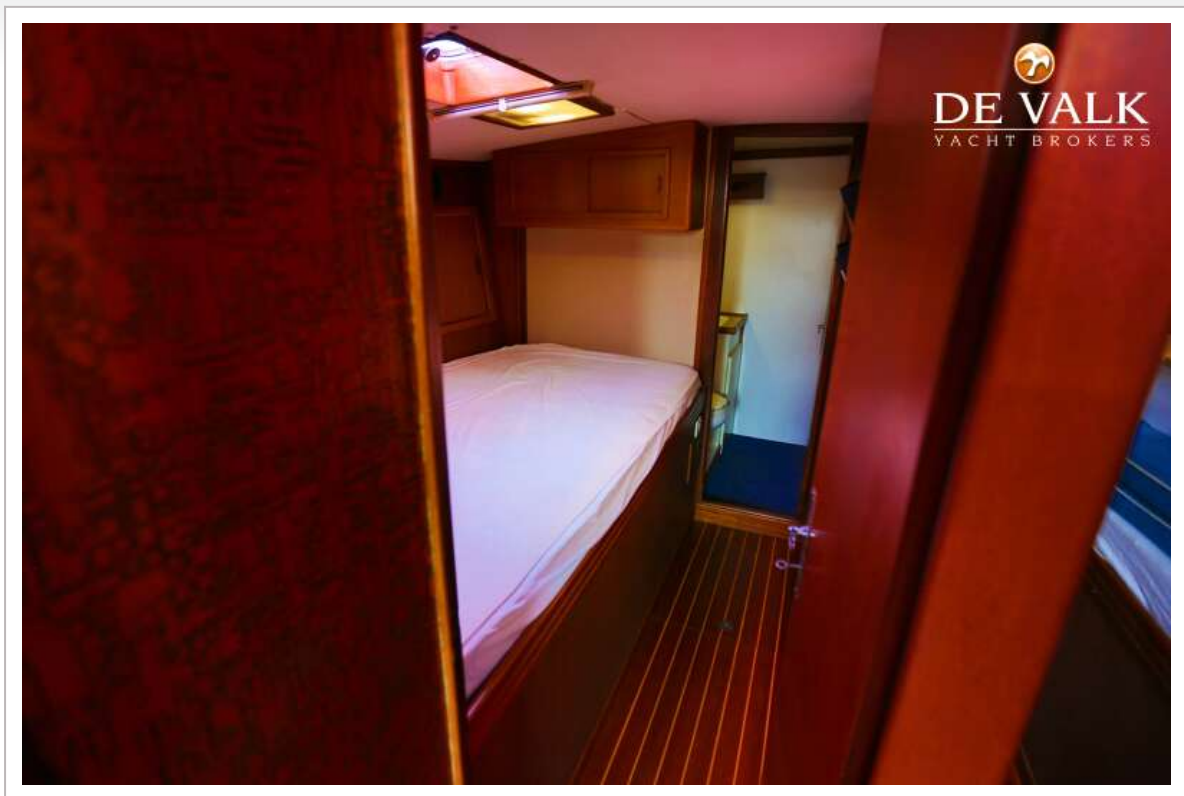




# BEAUFORT 16 KETCH

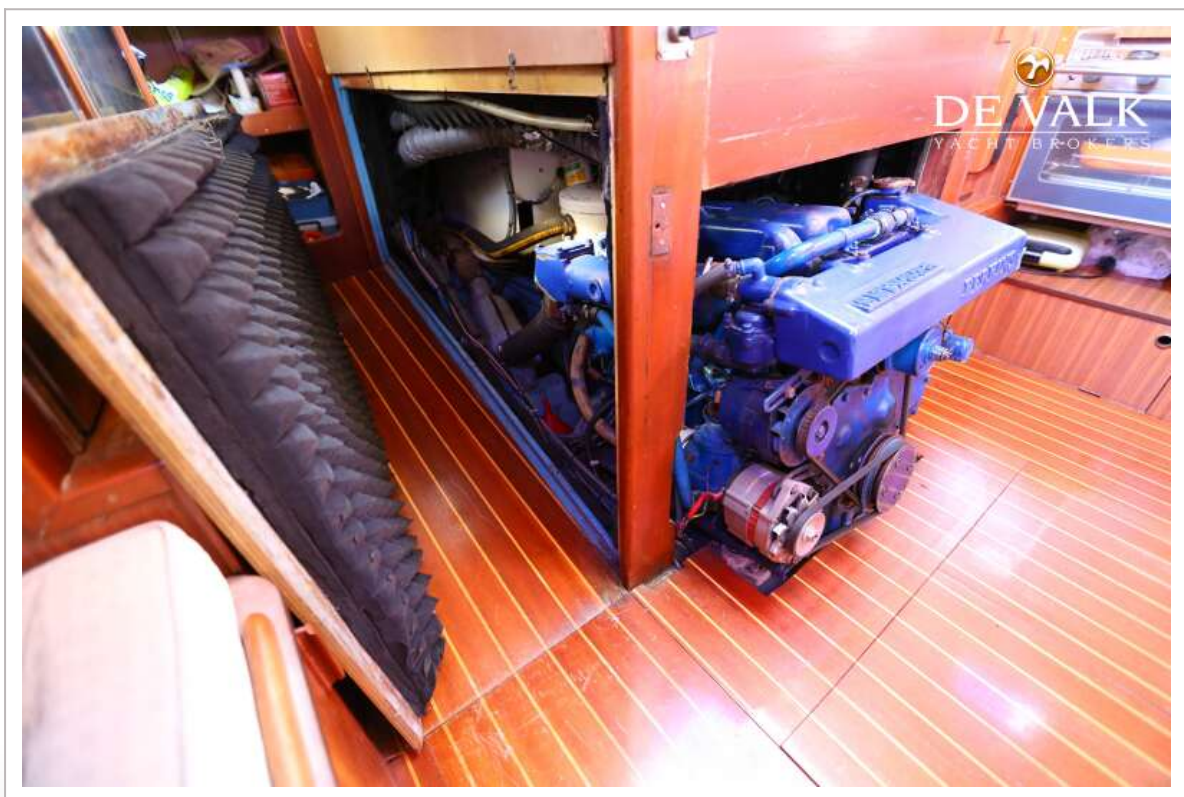
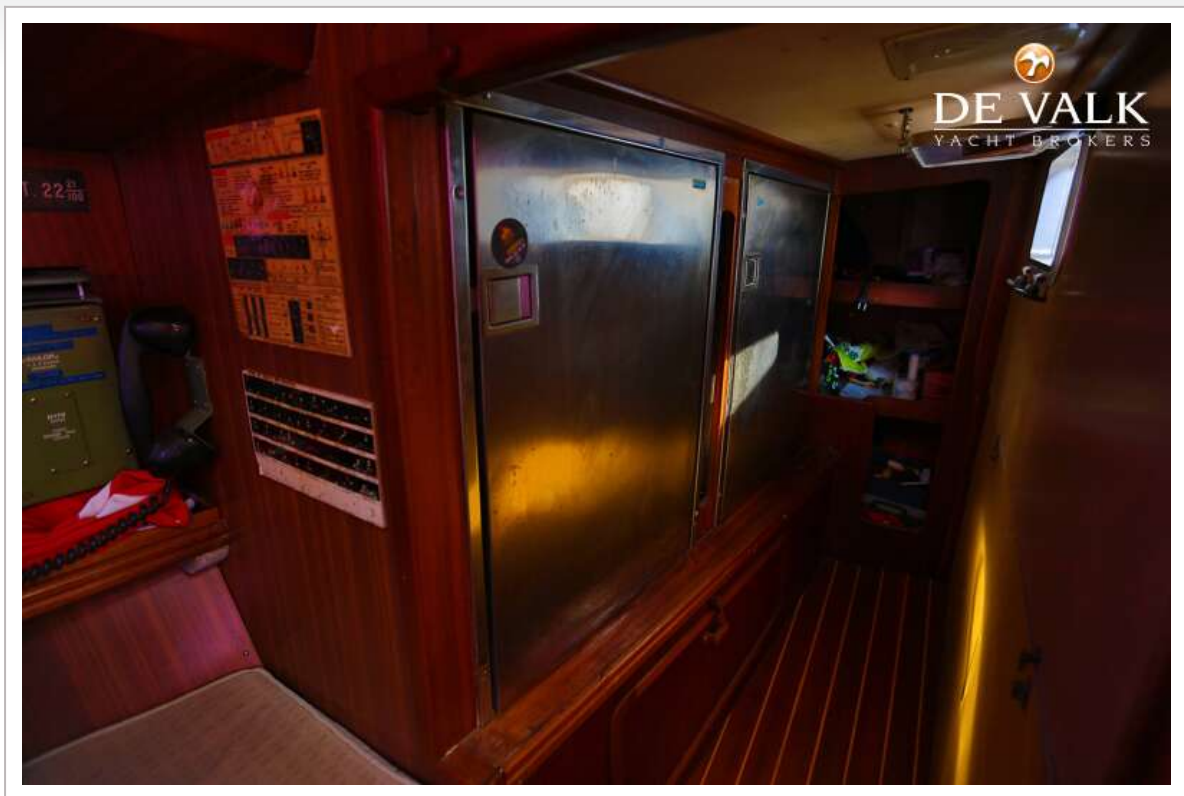


# BEAUFORT 16 KETCH

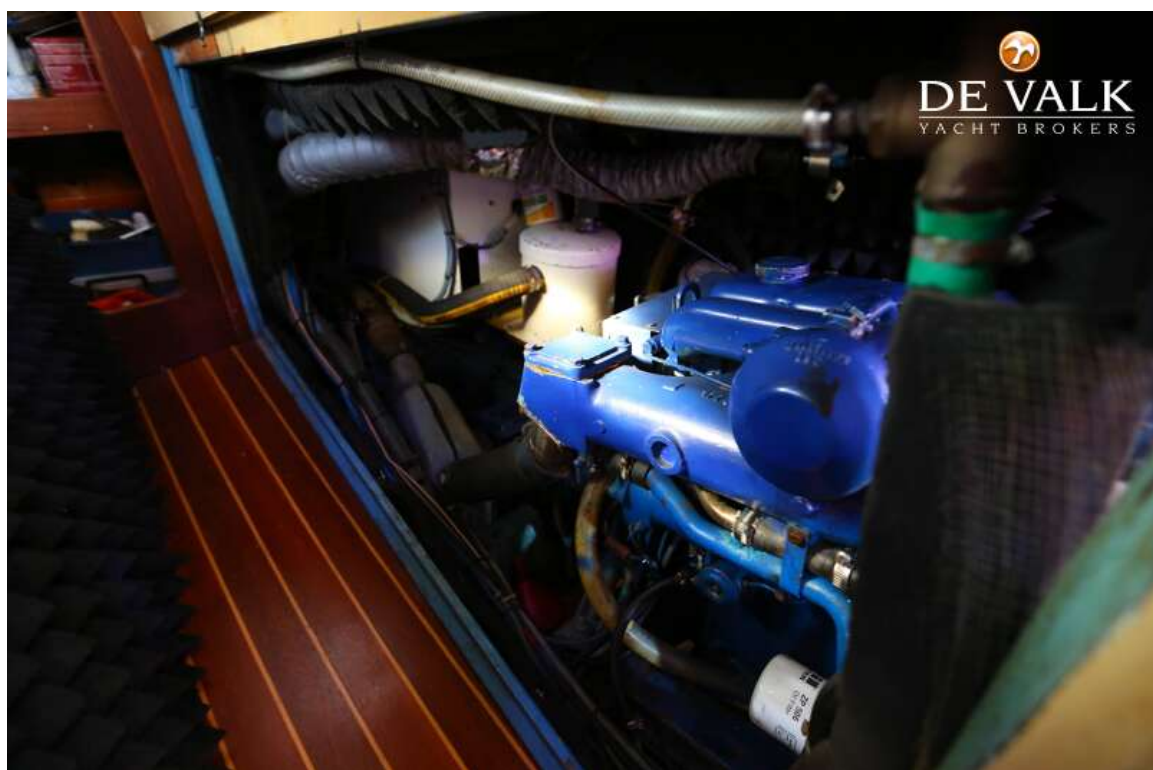




# BEAUFORT 16 KETCH

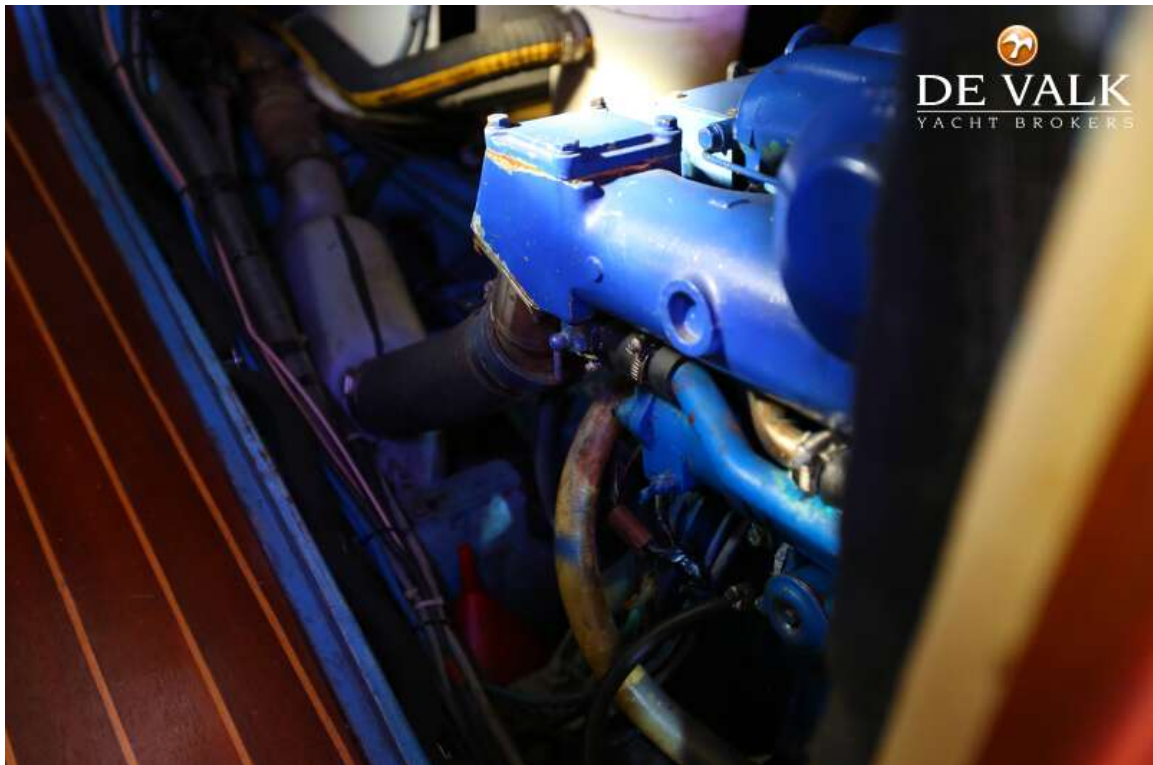


# BEAUFORT 16 KETCH





# BEAUFORT 16 KETCH



# BEAUFORT 16 KETCH

