



DE VALK  
YACHT BROKERS



BRANDARIS BARKAS 900 - 2X 5KW



DE VALK  
YACHT BROKERS

# BRANDARIS BARKAS 900 - 2X 5KW

## BROKER'S COMMENTS

The Brandaris Barkas 900 Twin Electric combines classic craftsmanship with modern, silent propulsion. Equipped with two 12 hp electric motors, she glides smoothly and quietly through the water. The high-quality teak, mahogany, and stainless steel finishing exude pure elegance. With her solid composite hull and attention to detail, this Barkas offers a unique blend of luxury, sustainability, and timeless design.

*Sjoerd Paddenburg*

## SPECIFICATIONS

<b>Dimensions</b>	9.15 x 2.70 x 0.62 (m)	<b>Builder</b>	Mogano Shipbuilding
<b>Built</b>	2025	<b>Cabins</b>	1
<b>Material</b>	GRP	<b>Berths</b>	
<b>Engine(s)</b>	2 x Combi 5 KW ACA LQ hybride	<b>Hp/Kw</b>	2 x 12.00 (hp), 8.83 (kw)
<b>Asking price</b>	on request (VAT Not paid)	<b>Lying</b>	at sales office

## CONTACT

<b>Sales office</b>	De Valk Loosdrecht B.V.	<b>Telephone</b>	+31 (0)35 582 90 30
<b>Address</b>	't Breukeleveense Meentje 6 1231LM Loosdrecht / Wijdmeren NL	<b>E-mail</b>	loosdrecht@devalk.nl

## DISCLAIMER

These particulars are given in good faith as supplied but cannot be guaranteed.



# BRANDARIS BARKAS 900 - 2X 5KW

## GENERAL

<b>Model</b>	BRANDARIS BARKAS 900 - 2X 5KW
<b>Type</b>	motor yacht
<b>LOA (m)</b>	9,15
<b>Beam (m)</b>	2,70
<b>Draft (m)</b>	0,62
<b>Air draft (m)</b>	1,30
<b>Year built</b>	2025
<b>Builder</b>	Mogano Shipbuilding
<b>Country</b>	The Netherlands
<b>Designer</b>	Mogano Shipbuilding
<b>CE norm</b>	C
<b>Hull material</b>	GRP
<b>Hull colour</b>	black
<b>Hull shape</b>	V-shaped hull
<b>Superstructure material</b>	teak
<b>Rubbing strake</b>	stainless steel
<b>Deck material</b>	GRP
<b>Deck finish</b>	teak
<b>Superstructure deck finish</b>	teak
<b>Cockpit deck finish</b>	teak
<b>Antifouling (year)</b>	2025
<b>Freshwater tank (litre)</b>	polyethylene 47
<b>Level indicator (freshwater)</b>	yes
<b>Blackwater tank (litre)</b>	stainless steel 40
<b>Level indicator (blackwater)</b>	yes
<b>Wheel steering</b>	hydraulic

## ACCOMMODATION

<b>Cabins</b>	1
<b>Interior</b>	mahogany



# BRANDARIS BARKAS 900 - 2X 5KW

Floor	teak
Countertop	wood
Sink	Glass
Fridge	LG CR85X
Water pressure system	electrical
Toilet	yes
Toilet system	electric
Wash basin	in the cabin

## MACHINERY

No of engines	2
Make	Combi
Type	5 KW ACA LQ
HP	12
kW	8.83
Fuel	hybride
Maximum speed (kn)	6,5
Cruising speed (kn)	5
Drive	shaft
Shaft seal	yes
Engine controls	electrical
Electric engine	2x
kW	8,83
Bowthruster	yes
Propeller type	fixed
Propeller shaft material	stainless steel
Shaft lubrication	water
Electric bilge pump	yes
Electrical installation	12V / 48V
Batteries	yes
Electric engine battery	2x 9,3KWh Lithium ACES 48V



# BRANDARIS BARKAS 900 - 2X 5KW

<b>Bowthruster battery</b>	12V
<b>Battery monitor</b>	Raymarine
<b>Battery charger</b>	ACES ABC3300-4850LI 3300W
<b>Inverter</b>	2x Combi BK 200
<b>Diode battery combiners</b>	yes
<b>Shorepower</b>	with cable
<b>Extra info</b>	At a speed of 6 km/h, a sailing time of 13 hours.

## NAVIGATION

<b>Electric compass</b>	Raymarine Axiom Plus 9
<b>Multi control display</b>	Raymarine Axiom Plus 9
<b>Log</b>	Raymarine Axiom Plus 9
<b>GPS</b>	Raymarine Axiom Plus 9
<b>Navigation lights</b>	yes

## EQUIPMENT

<b>Sprayhood</b>	yes
<b>Cockpit cover</b>	yes
<b>Bimini</b>	yes
<b>Cockpit cushions</b>	yes
<b>Cockpit chairs</b>	yes
<b>Bathing platform</b>	yes
<b>Boarding ladder</b>	stainless steel
<b>Anchor</b>	yes
<b>Clearview window</b>	yes



# BRANDARIS BARKAS 900 - 2X 5KW



# BRANDARIS BARKAS 900 - 2X 5KW



# BRANDARIS BARKAS 900 - 2X 5KW



# BRANDARIS BARKAS 900 - 2X 5KW



# BRANDARIS BARKAS 900 - 2X 5KW



# BRANDARIS BARKAS 900 - 2X 5KW



# BRANDARIS BARKAS 900 - 2X 5KW



# BRANDARIS BARKAS 900 - 2X 5KW



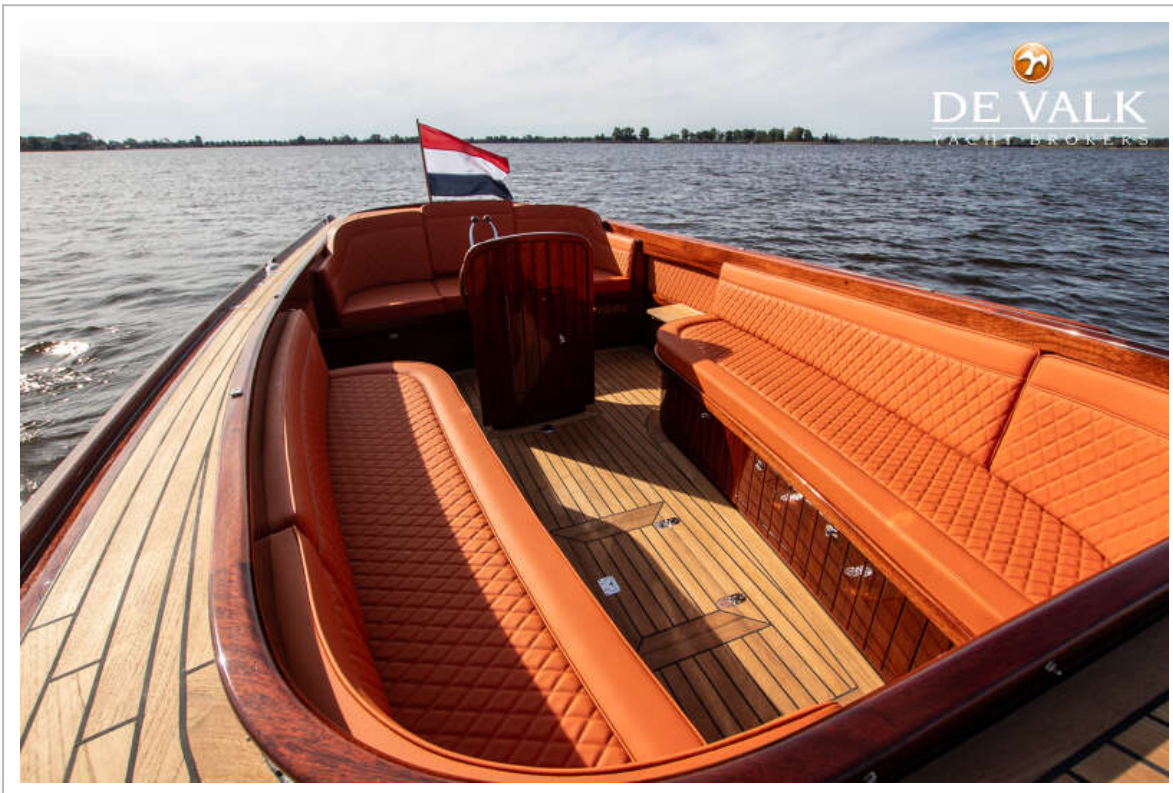
# BRANDARIS BARKAS 900 - 2X 5KW



# BRANDARIS BARKAS 900 - 2X 5KW



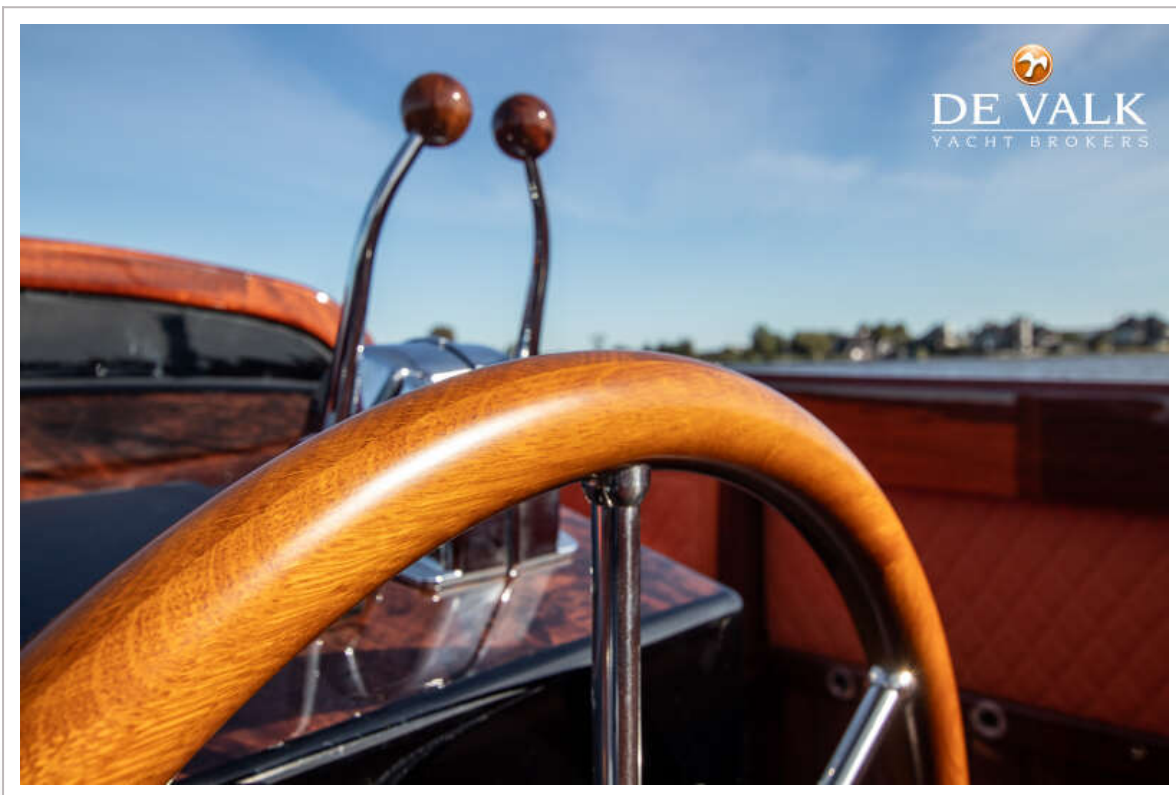
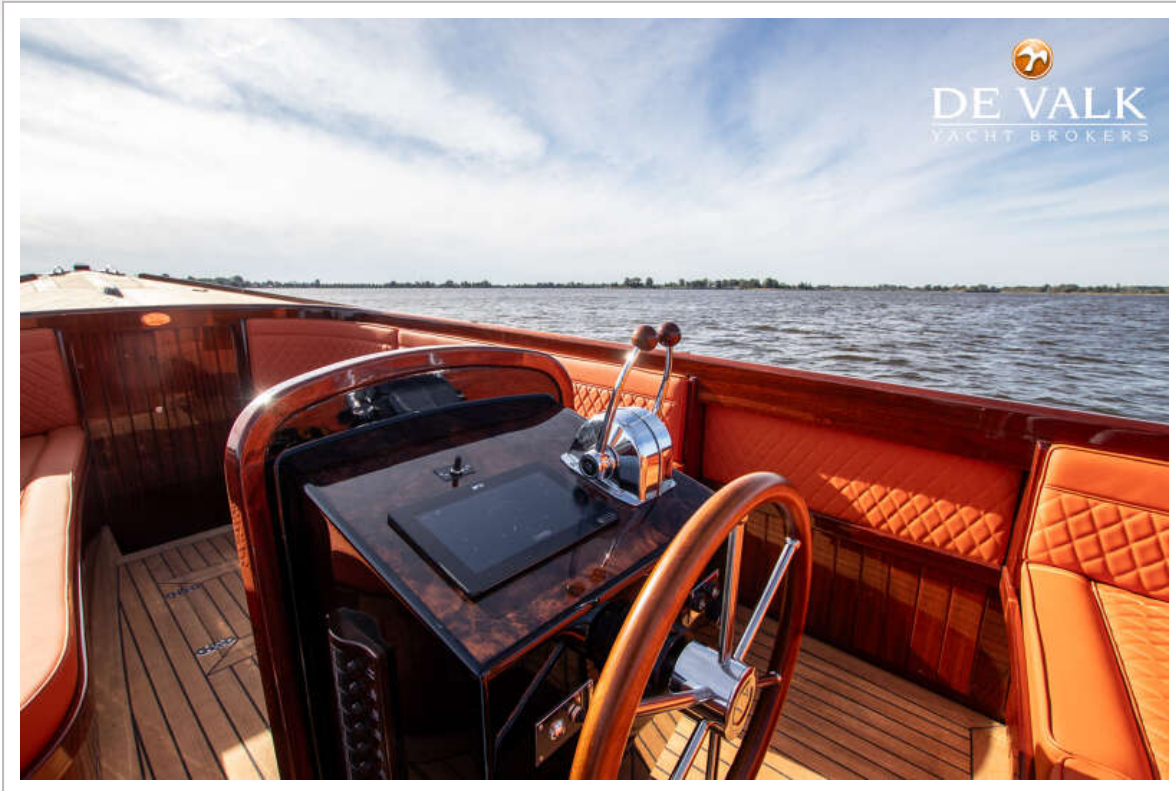
# BRANDARIS BARKAS 900 - 2X 5KW



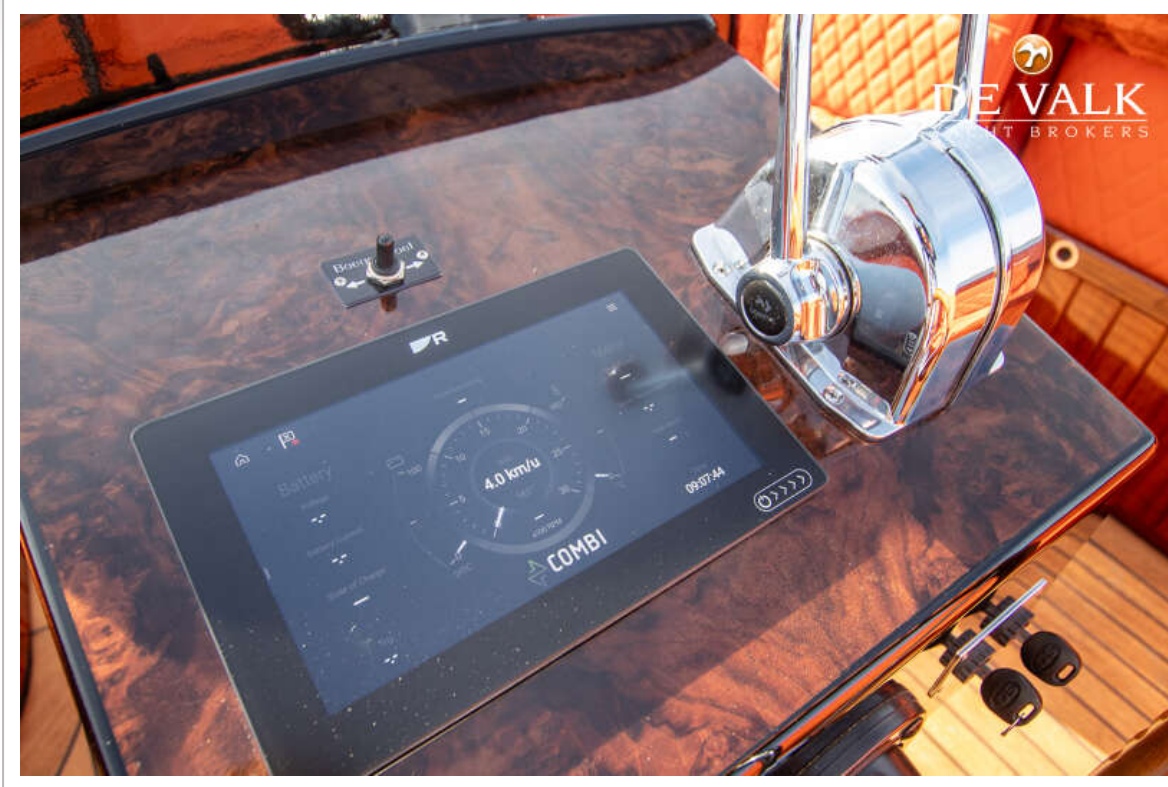
# BRANDARIS BARKAS 900 - 2X 5KW



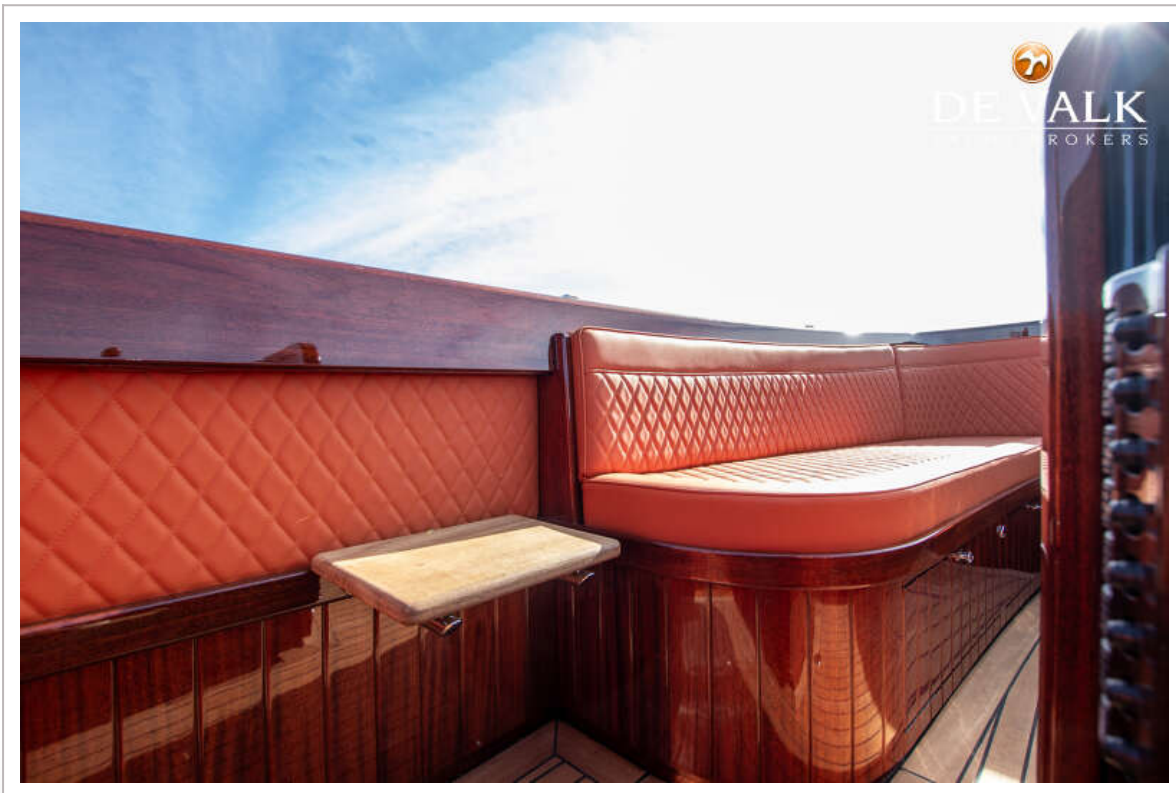
# BRANDARIS BARKAS 900 - 2X 5KW



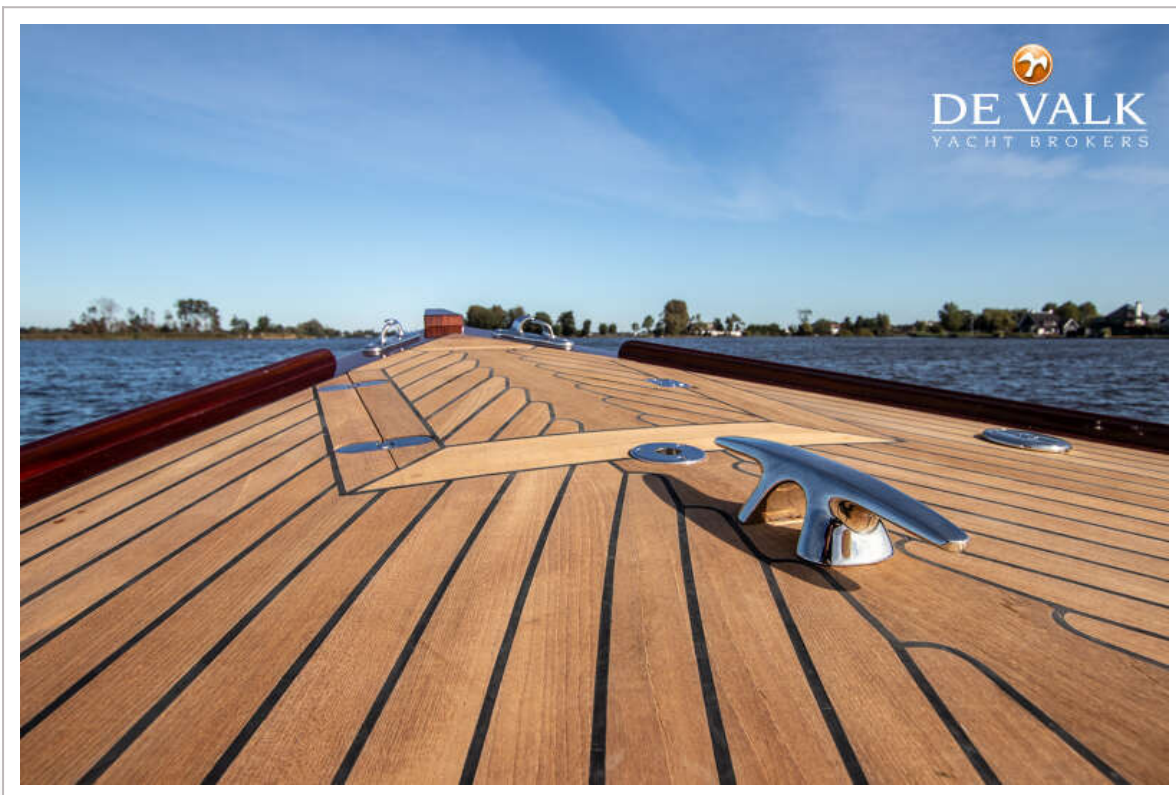
# BRANDARIS BARKAS 900 - 2X 5KW



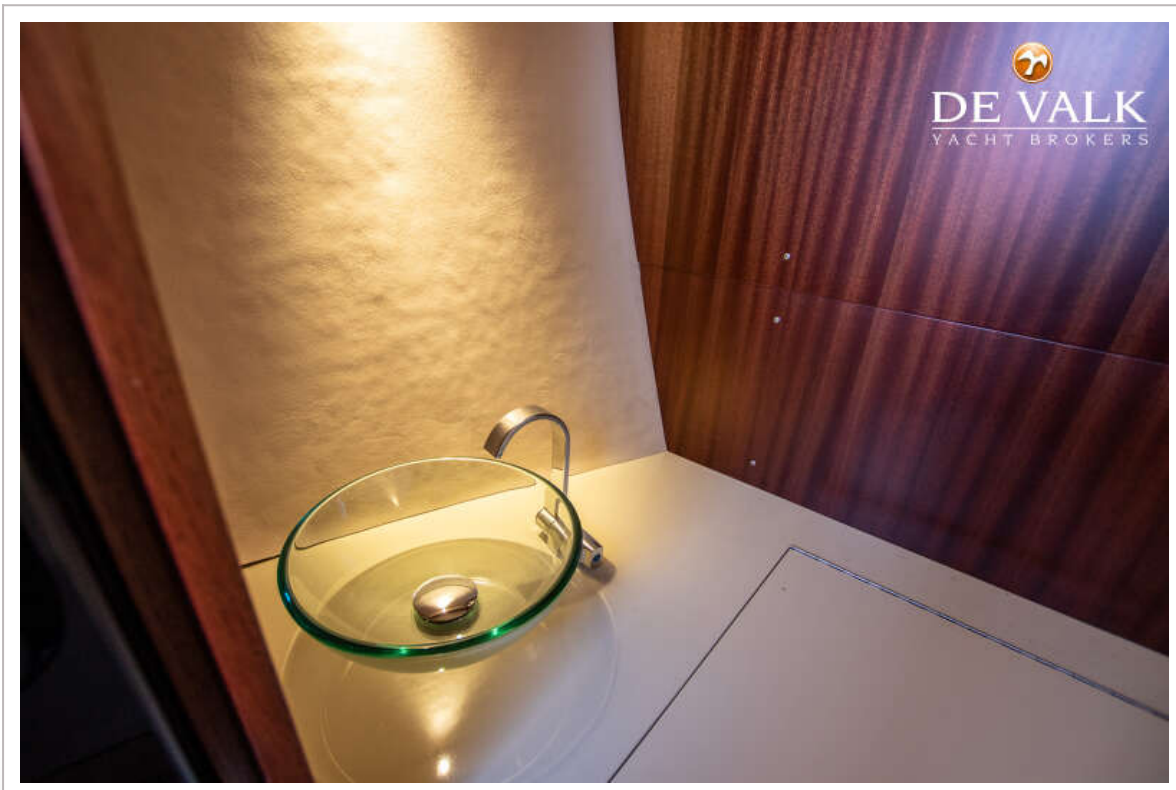
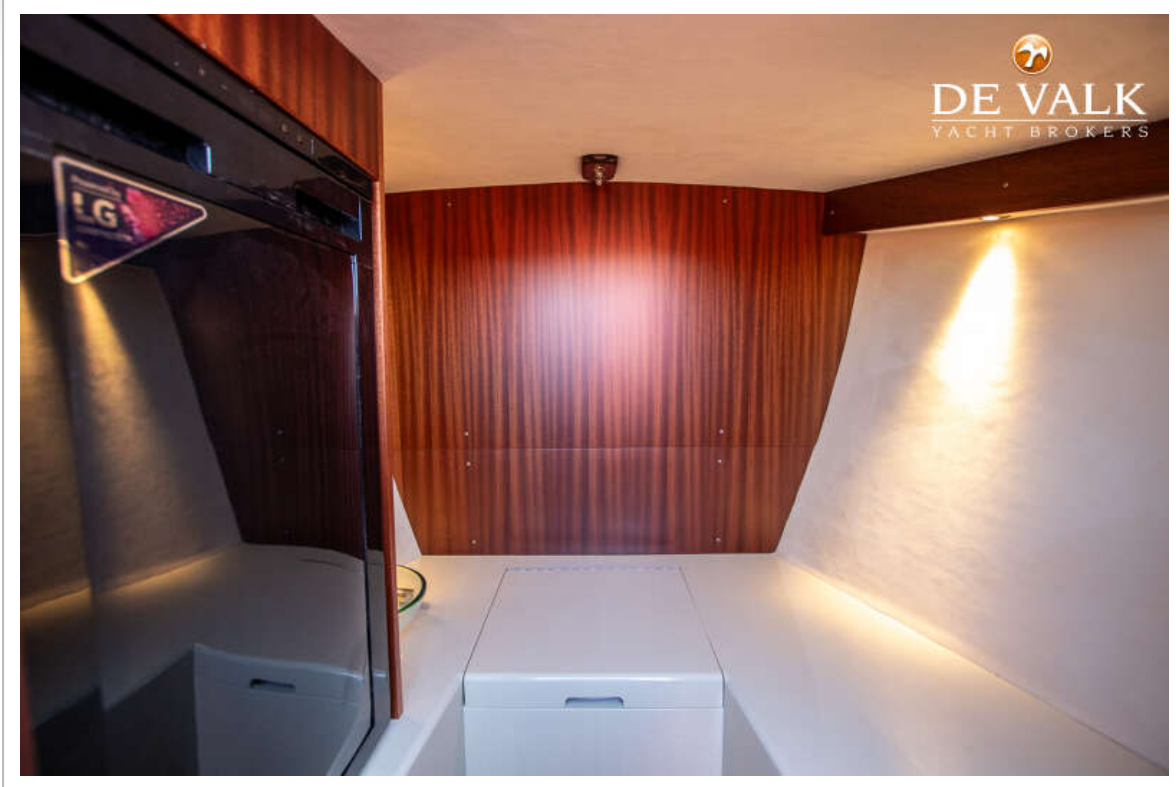
# BRANDARIS BARKAS 900 - 2X 5KW



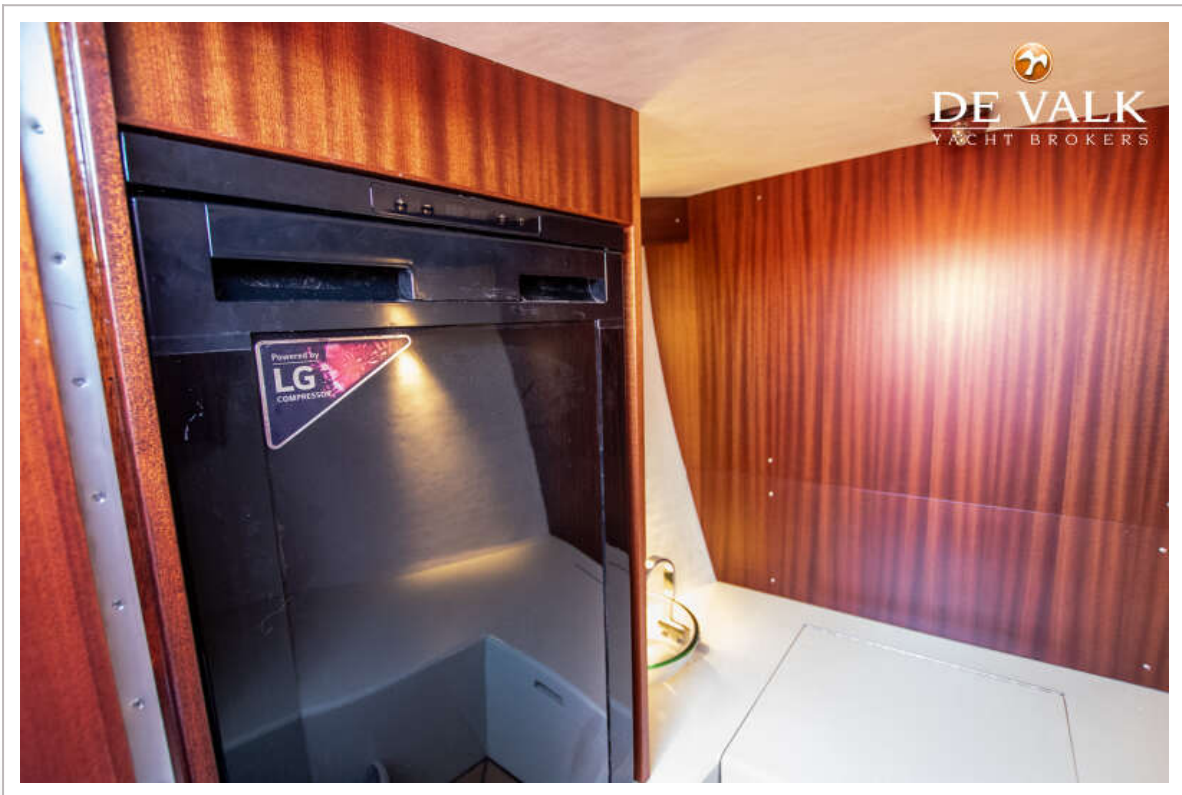
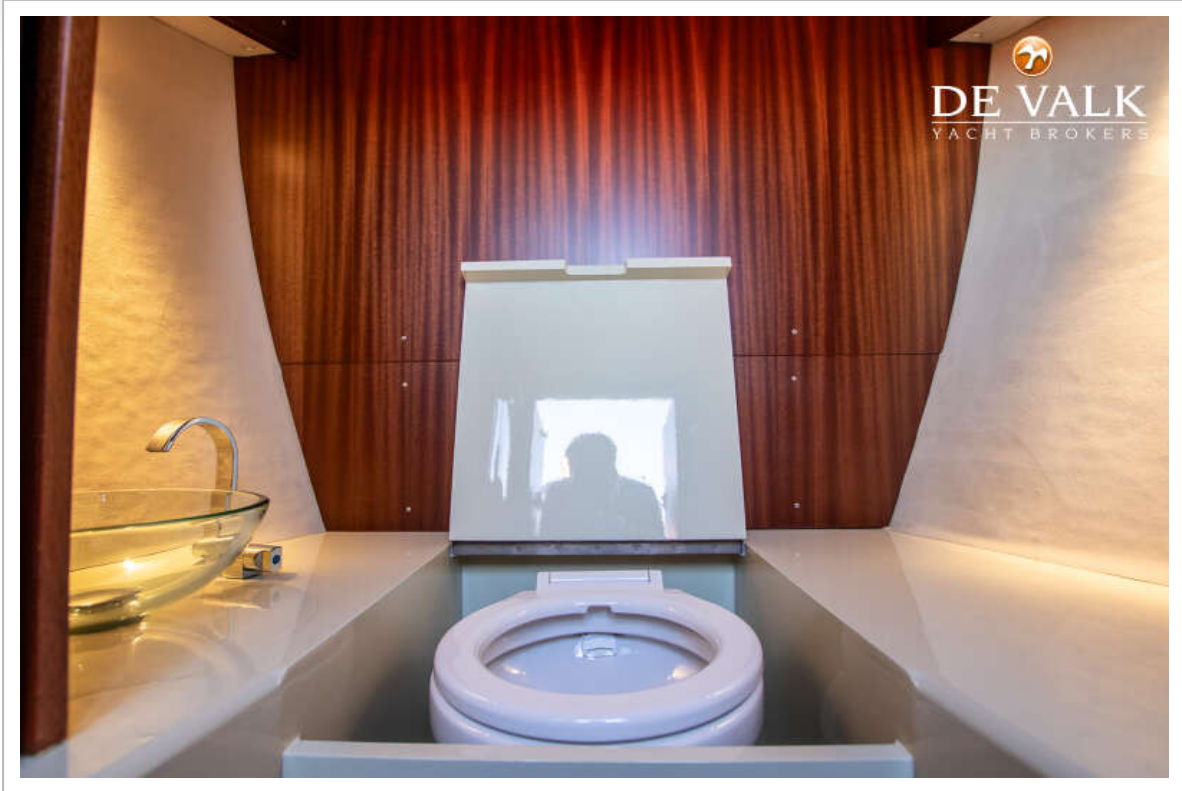
# BRANDARIS BARKAS 900 - 2X 5KW



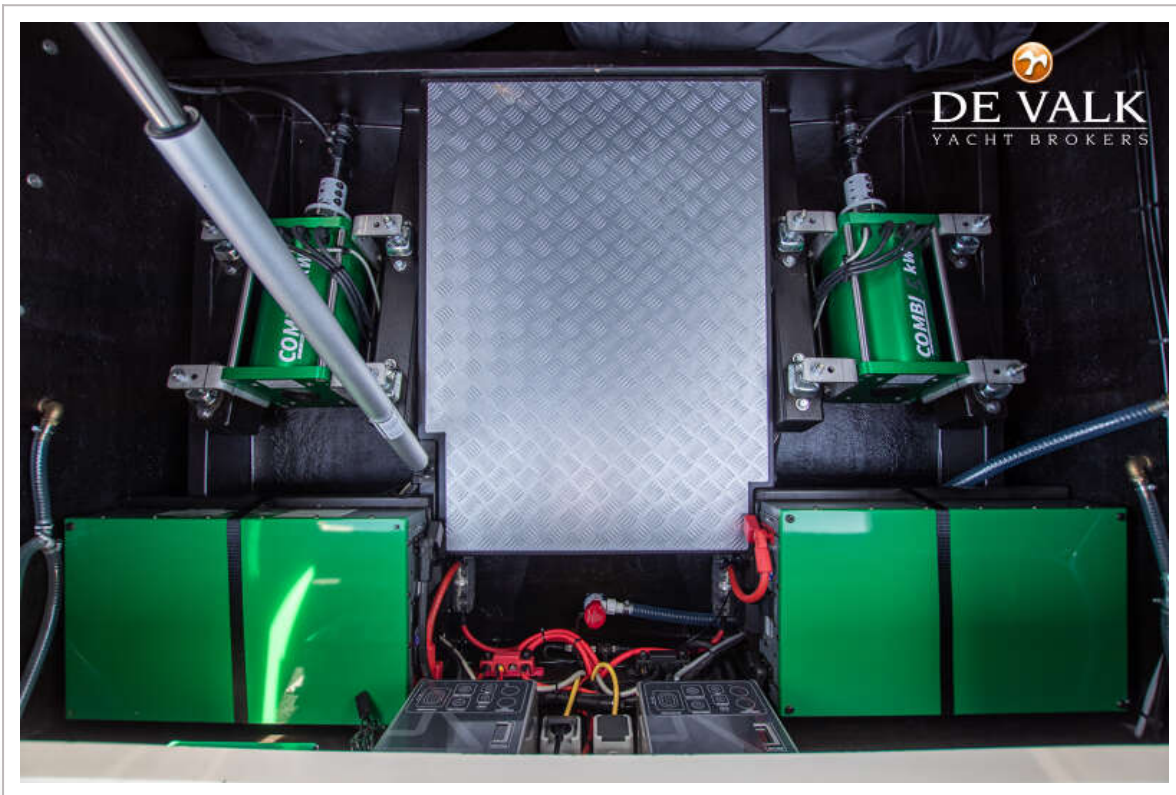
# BRANDARIS BARKAS 900 - 2X 5KW



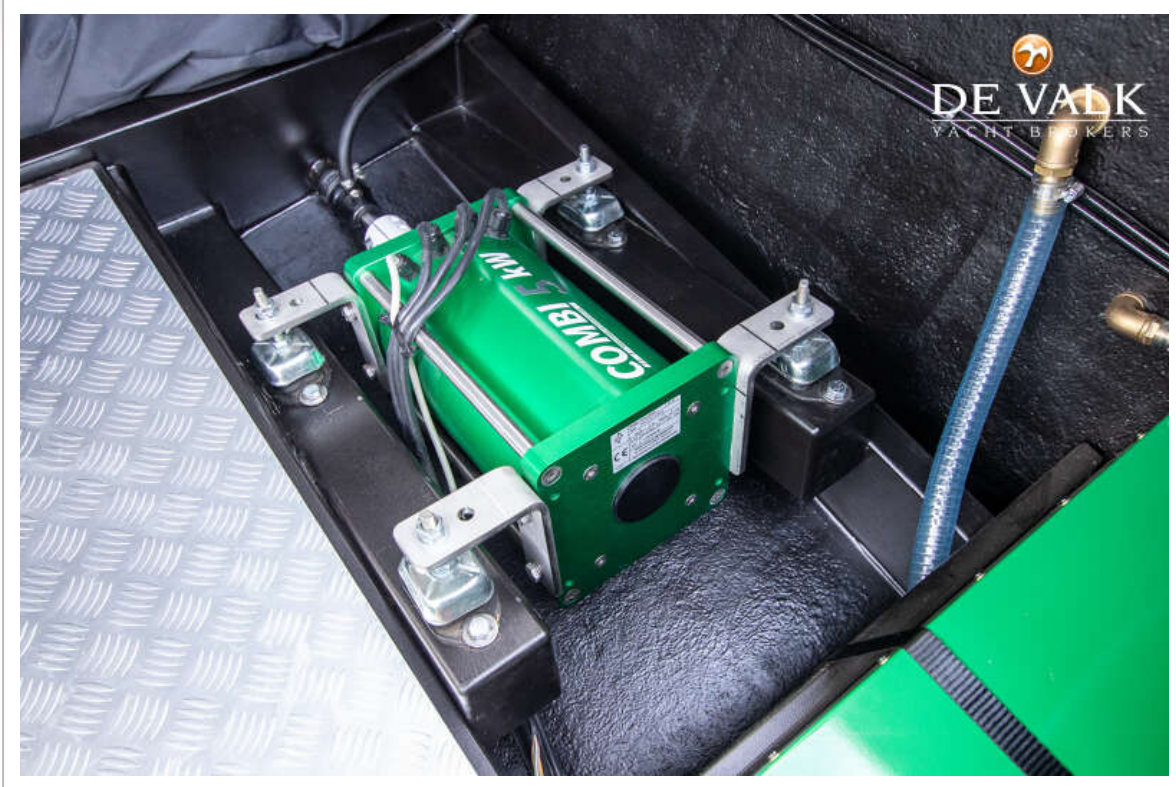
# BRANDARIS BARKAS 900 - 2X 5KW



# BRANDARIS BARKAS 900 - 2X 5KW



# BRANDARIS BARKAS 900 - 2X 5KW



# BRANDARIS BARKAS 900 - 2X 5KW



# BRANDARIS BARKAS 900 - 2X 5KW

