



DE VALK
YACHT BROKERS



BRANDARIS BARKAS 900 TWIN ELECTRIC



DE VALK
YACHT BROKERS

BRANDARIS BARKAS 900 TWIN ELECTRIC

BROKER'S COMMENTS

The Brandaris Barkas 900 Twin Electric combines classic craftsmanship with modern, silent propulsion. Equipped with two 12 hp electric motors, she glides smoothly and quietly through the water. The high-quality teak, mahogany, and stainless steel finishing exude pure elegance. With her solid composite hull and attention to detail, this Barkas offers a unique blend of luxury, sustainability, and timeless design.

Sjoerd Paddenburg

SPECIFICATIONS

Dimensions	9.15 x 2.70 x 0.62 (m)	Builder	Mogano Shipbuilding
Built	2025	Cabins	1
Material	GRP	Berths	
Engine(s)	2 x Combi 5 KW ACA LQ elec	Hp/Kw	2 x 12.00 (hp), 8.83 (kw)
Asking price	€ 242.500 (VAT Not paid)	Lying	at sales office

CONTACT

Sales office	De Valk Loosdrecht B.V.	Telephone	+31 (0)35 582 90 30
Address	't Breukeleveense Meentje 6 1231LM Loosdrecht / Wijdmeren NL	E-mail	loosdrecht@devalk.nl

DISCLAIMER

These particulars are given in good faith as supplied but cannot be guaranteed.



BRANDARIS BARKAS 900 TWIN ELECTRIC

GENERAL

Model	BRANDARIS BARKAS 900 TWIN ELECTRIC
Type	motor yacht
LOA (m)	9,15
Beam (m)	2,70
Draft (m)	0,62
Air draft (m)	1,30
Year built	2025
Builder	Mogano Shipbuilding
Country	The Netherlands
Designer	Mogano Shipbuilding
CE norm	C
Hull material	GRP
Hull colour	black
Hull shape	V-shaped hull
Superstructure material	teak
Rubbing strake	stainless steel
Deck material	GRP
Deck finish	teak
Superstructure deck finish	teak
Cockpit deck finish	teak
Antifouling (year)	2025
Freshwater tank (litre)	polyethylene 47
Level indicator (freshwater)	yes
Blackwater tank (litre)	stainless steel 40
Level indicator (blackwater)	yes
Wheel steering	hydraulic

ACCOMMODATION

Cabins	1
Interior	mahogany



BRANDARIS BARKAS 900 TWIN ELECTRIC

Floor	teak
Countertop	wood
Sink	Glass
Fridge	LG CR85X
Water pressure system	electrical
Toilet	yes
Toilet system	electric
Wash basin	in the cabin

MACHINERY

No of engines	2
Make	Combi
Type	5 KW ACA LQ
HP	12
kW	8.83
Fuel	electric
Maximum speed (kn)	6,5
Cruising speed (kn)	5
Drive	shaft
Shaft seal	yes
Engine controls	electrical
Electric engine	2x
kW	8,83
Bowthruster	yes
Propeller type	fixed
Propeller shaft material	stainless steel
Shaft lubrication	water
Electric bilge pump	yes
Electrical installation	12V / 48V
Batteries	yes
Electric engine battery	2x 9,3KWh Lithium ACES 48V



BRANDARIS BARKAS 900 TWIN ELECTRIC

Bowthruster battery	12V
Battery monitor	Raymarine
Battery charger	ACES ABC3300-4850LI 3300W
Inverter	2x Combi BK 200
Diode battery combiners	yes
Shorepower	with cable
Extra info	At a speed of 6 km/h, a sailing time of 13 hours.

NAVIGATION

Electric compass	Raymarine Axiom Plus 9
Multi control display	Raymarine Axiom Plus 9
Log	Raymarine Axiom Plus 9
GPS	Raymarine Axiom Plus 9
Navigation lights	yes

EQUIPMENT

Sprayhood	yes
Cockpit cover	yes
Bimini	yes
Cockpit cushions	yes
Cockpit chairs	yes
Bathing platform	yes
Boarding ladder	stainless steel
Anchor	yes
Clearview window	yes



BRANDARIS BARKAS 900 TWIN ELECTRIC



BRANDARIS BARKAS 900 TWIN ELECTRIC



BRANDARIS BARKAS 900 TWIN ELECTRIC



BRANDARIS BARKAS 900 TWIN ELECTRIC



BRANDARIS BARKAS 900 TWIN ELECTRIC



BRANDARIS BARKAS 900 TWIN ELECTRIC



BRANDARIS BARKAS 900 TWIN ELECTRIC



BRANDARIS BARKAS 900 TWIN ELECTRIC



BRANDARIS BARKAS 900 TWIN ELECTRIC



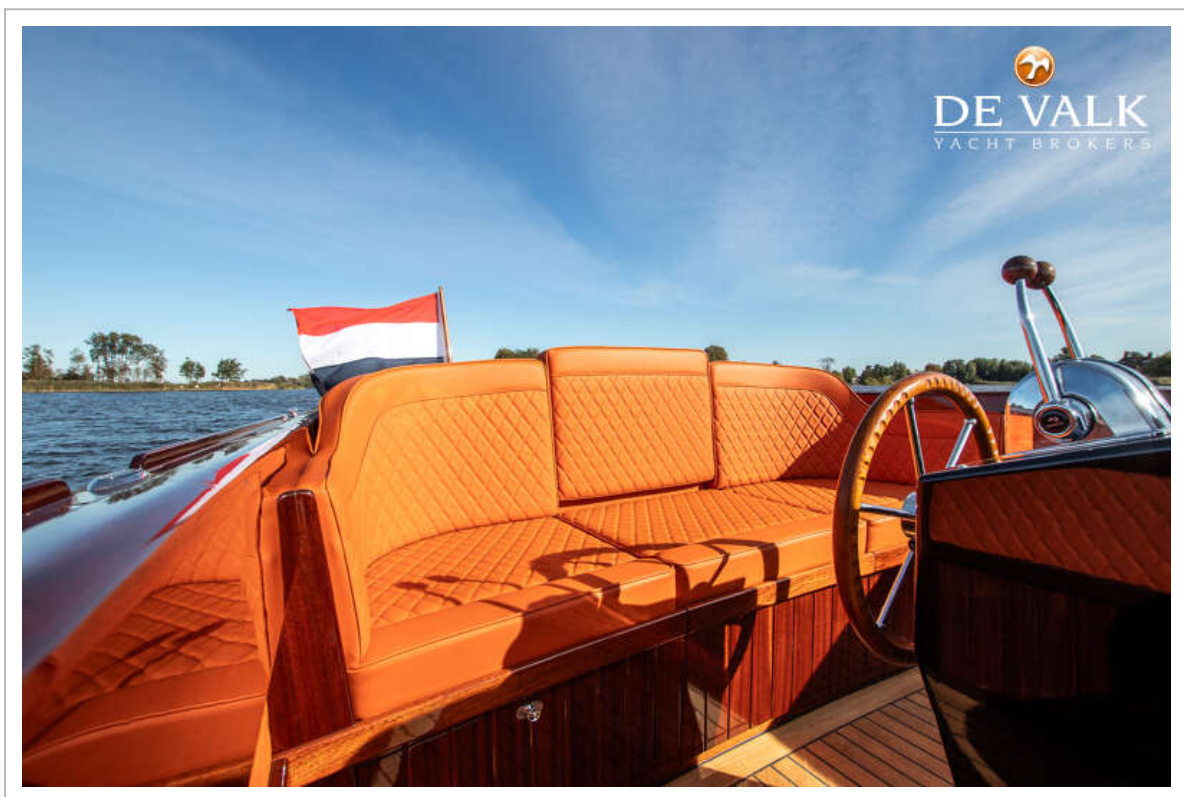
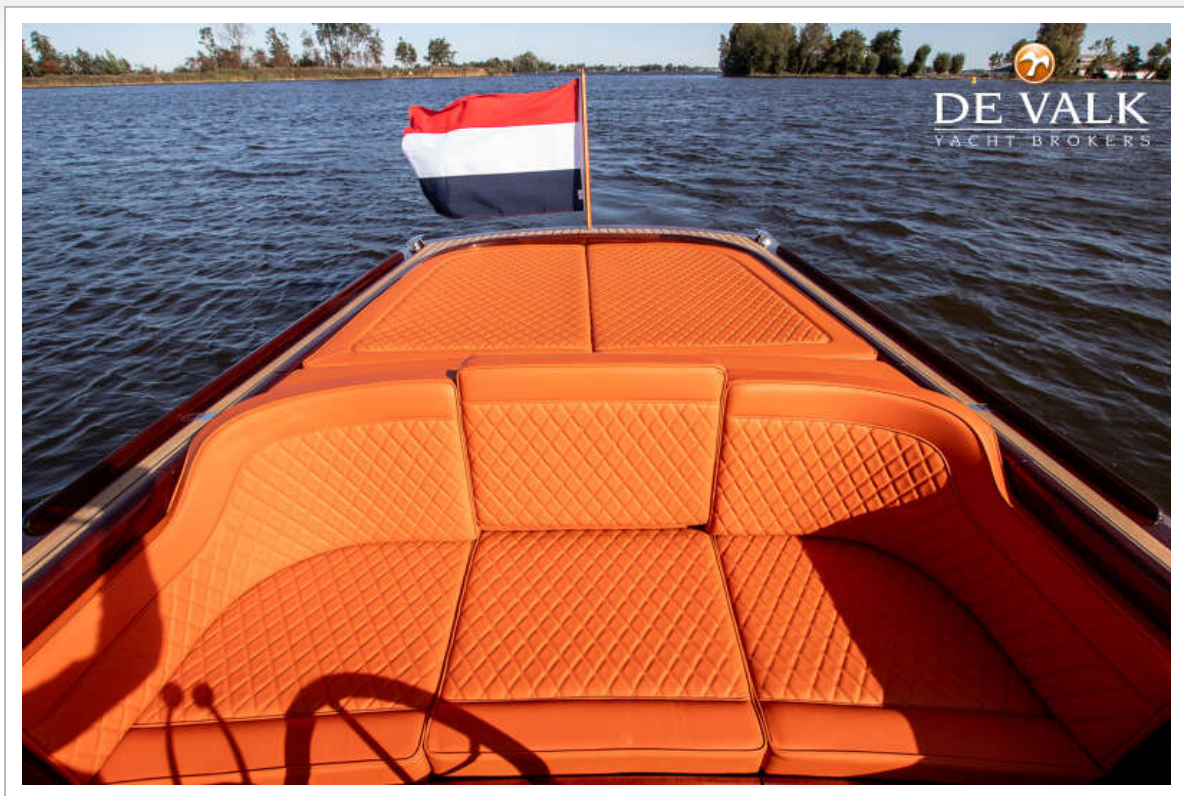
BRANDARIS BARKAS 900 TWIN ELECTRIC



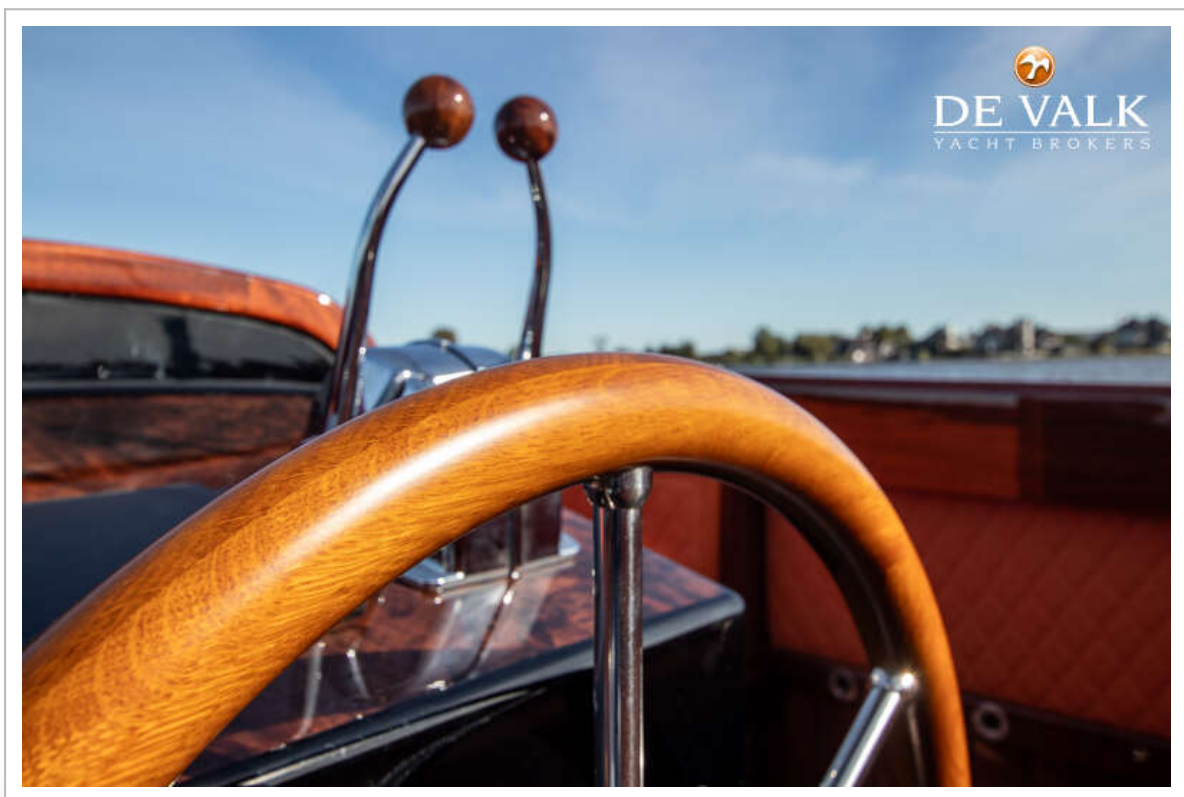
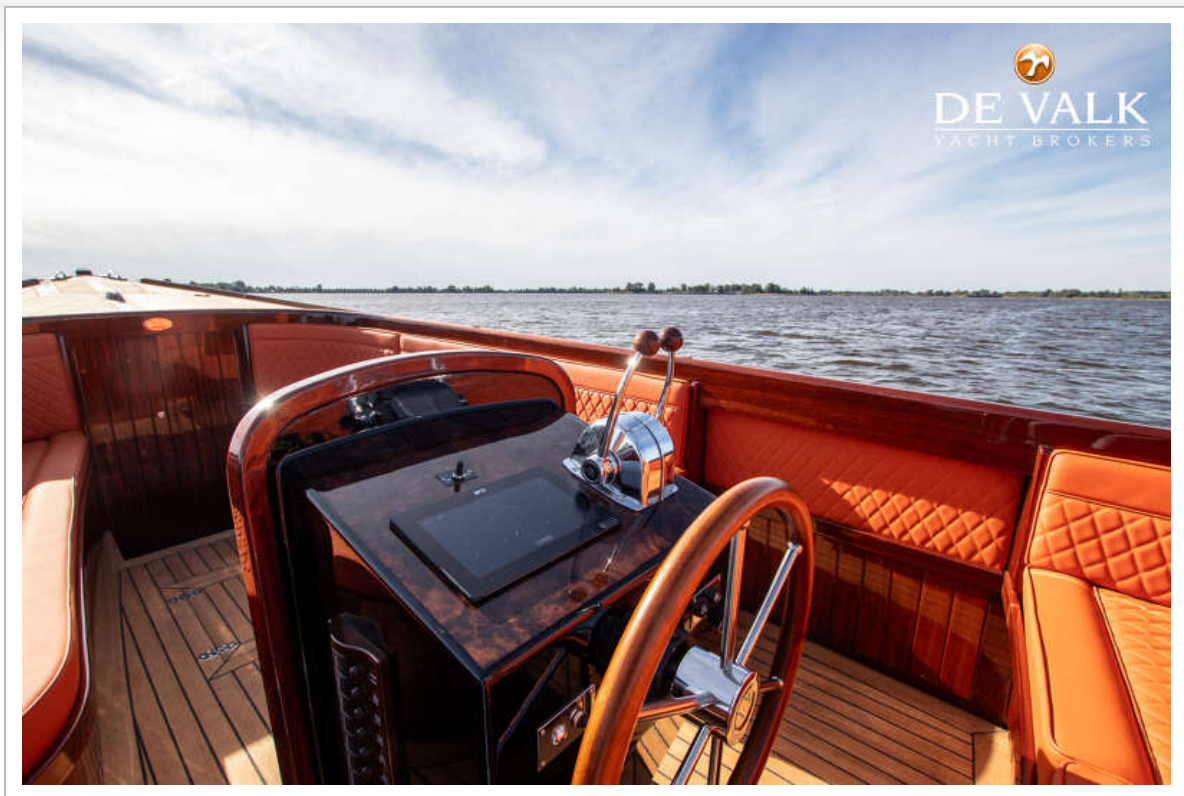
BRANDARIS BARKAS 900 TWIN ELECTRIC



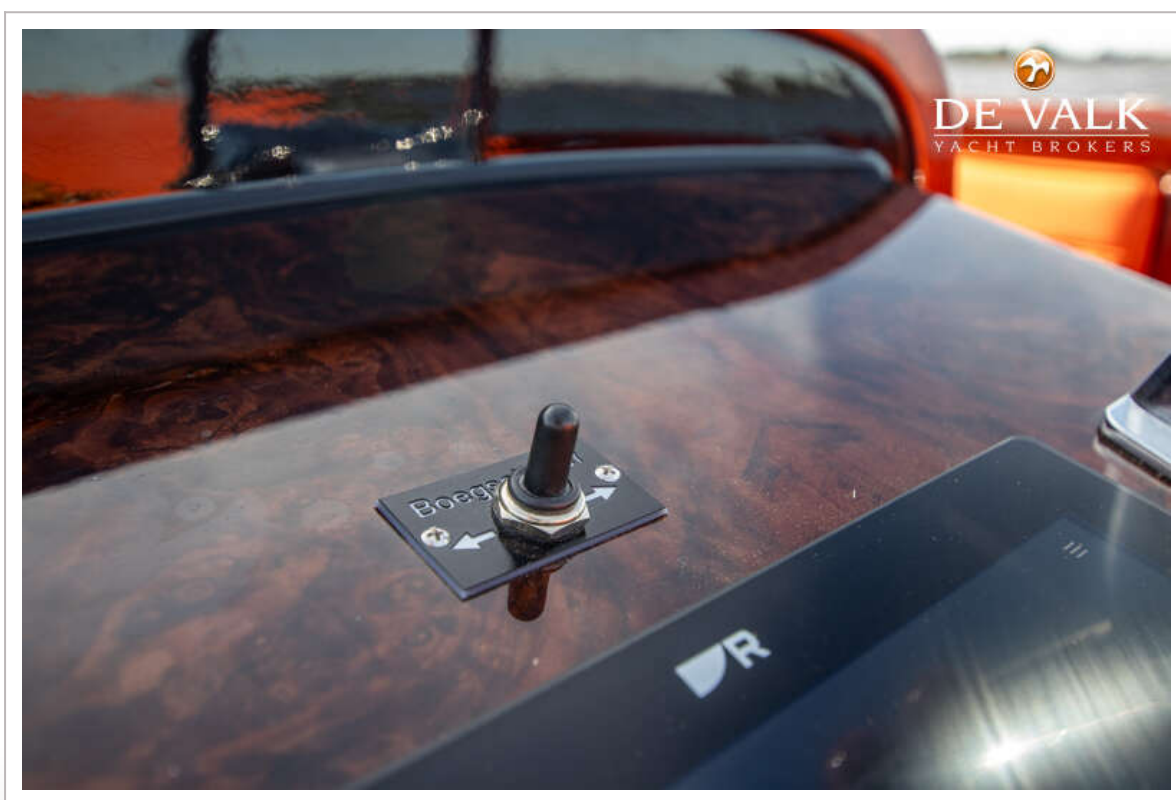
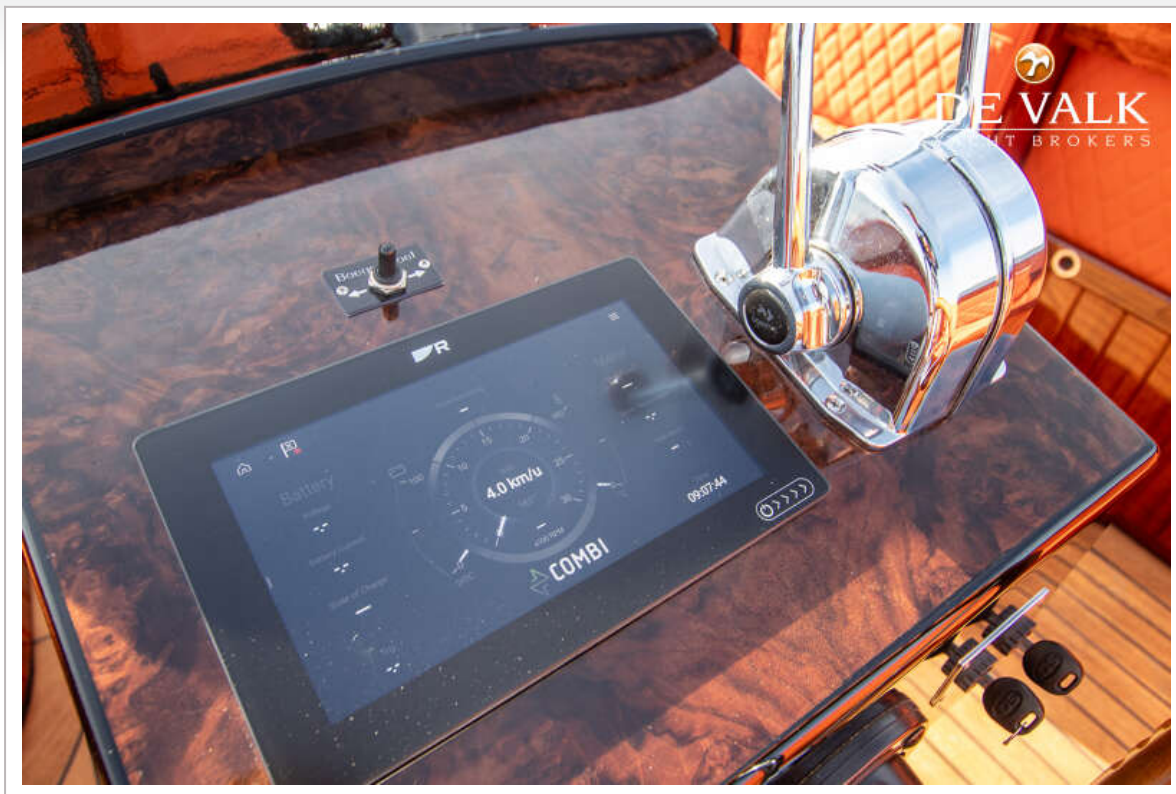
BRANDARIS BARKAS 900 TWIN ELECTRIC



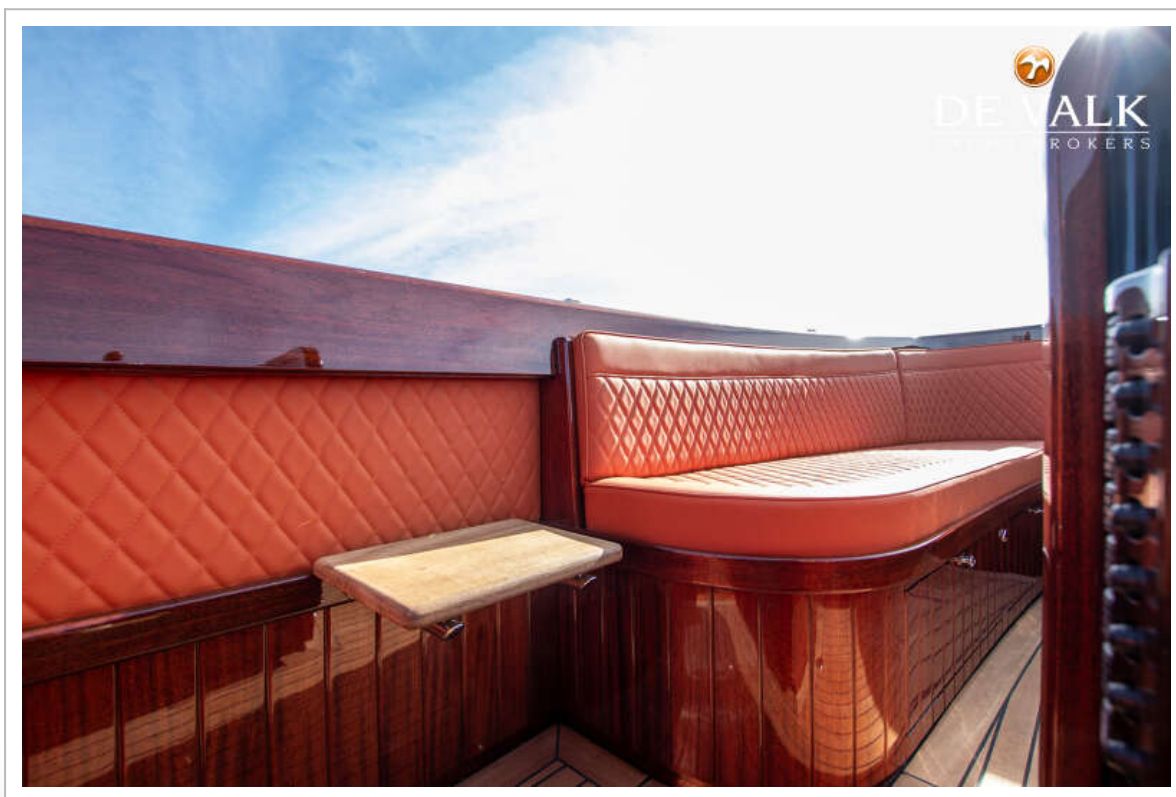
BRANDARIS BARKAS 900 TWIN ELECTRIC



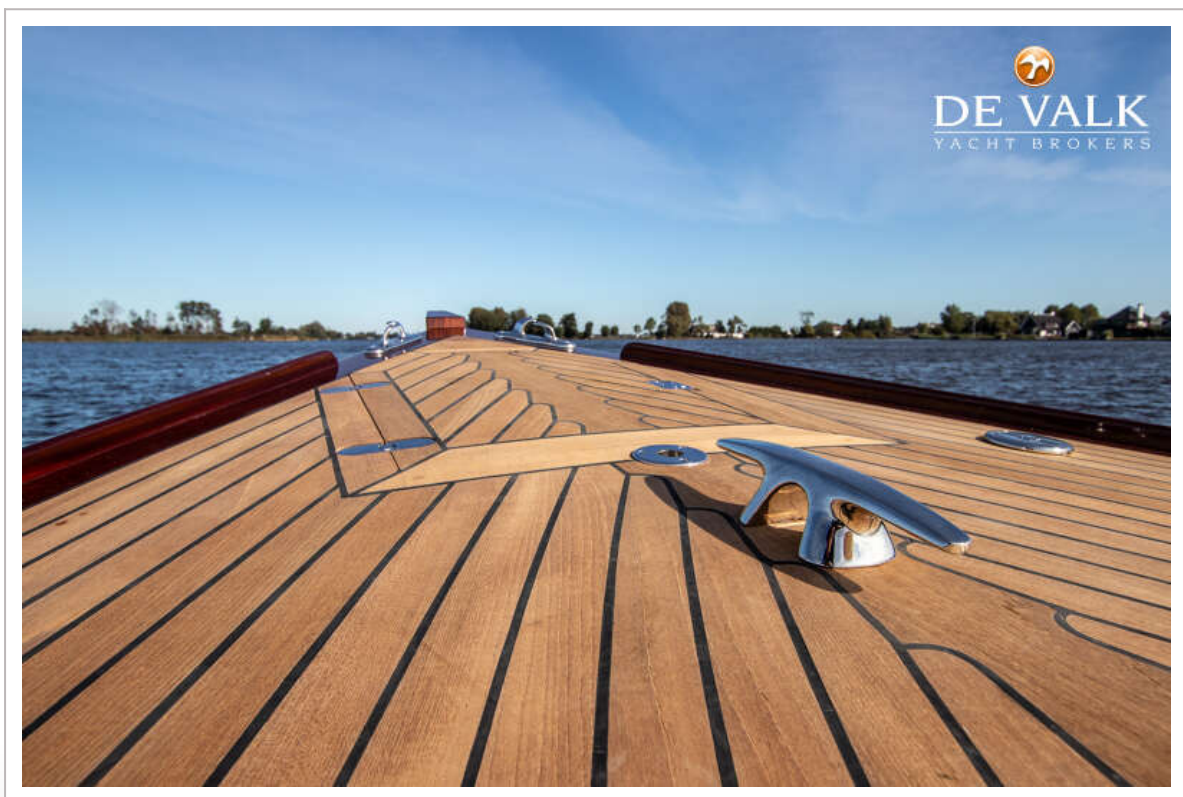
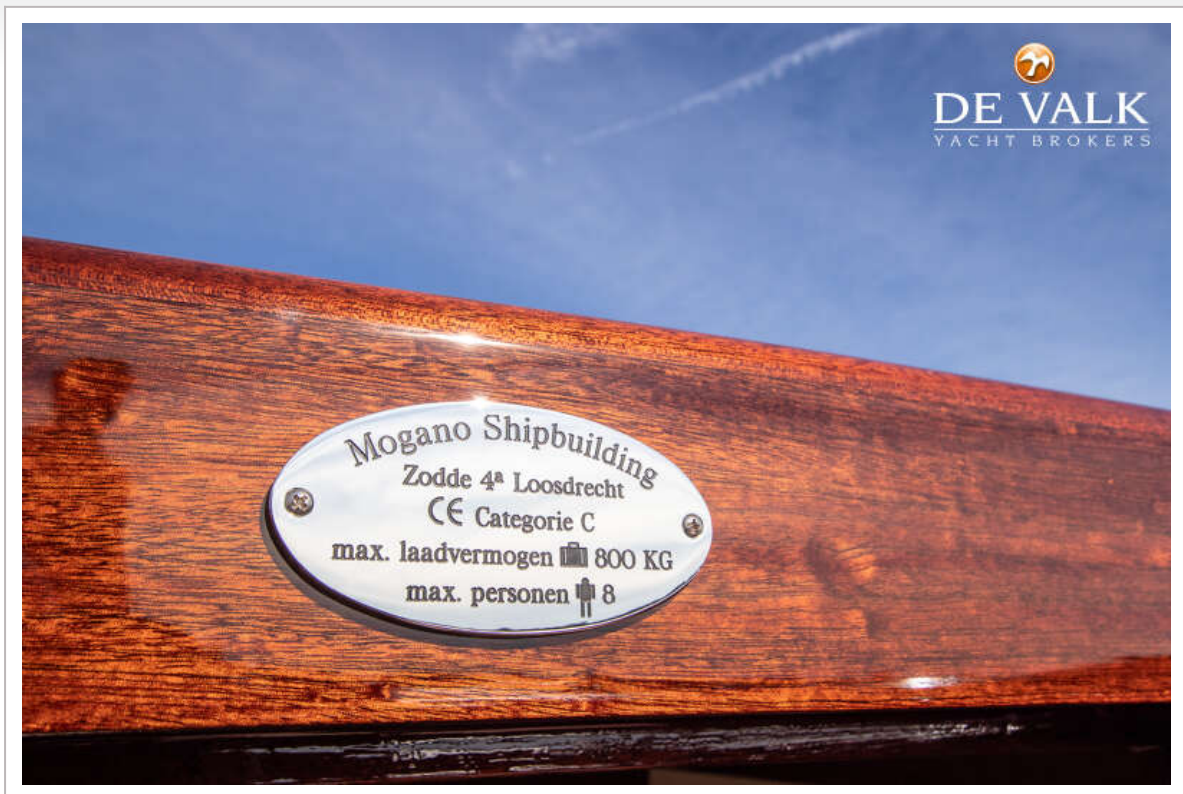
BRANDARIS BARKAS 900 TWIN ELECTRIC



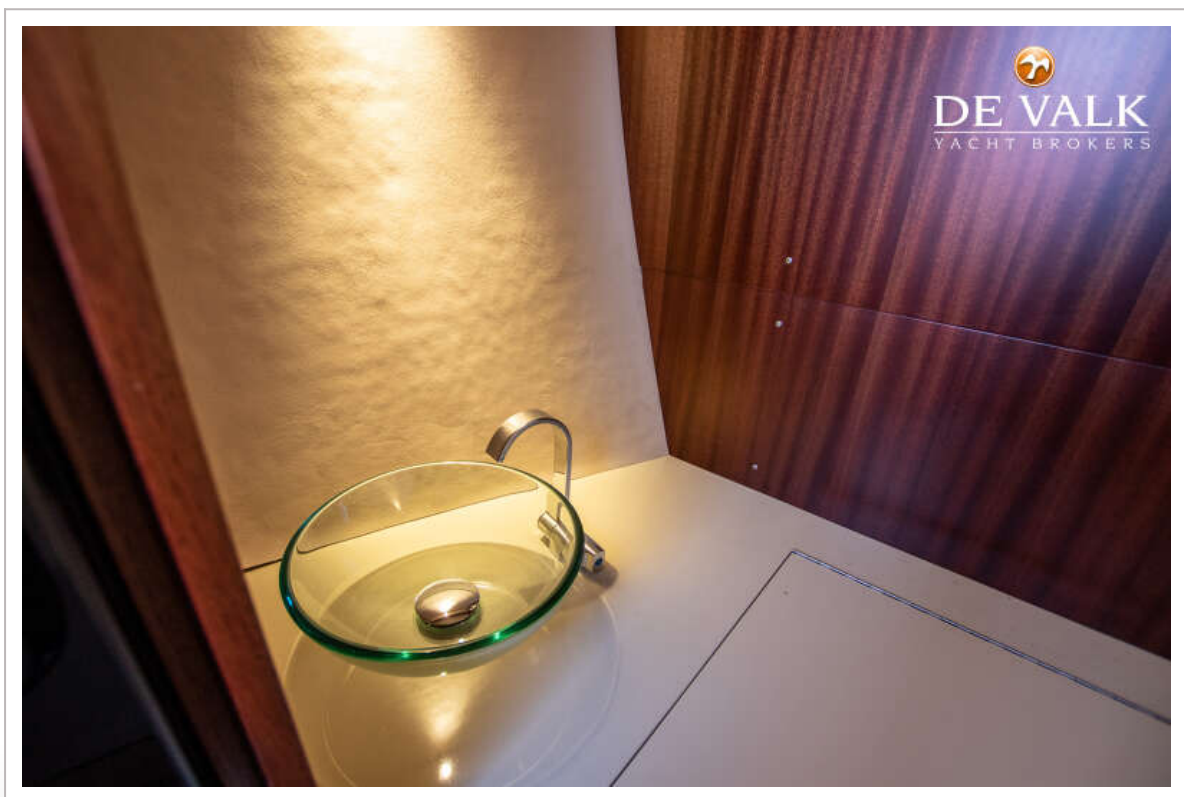
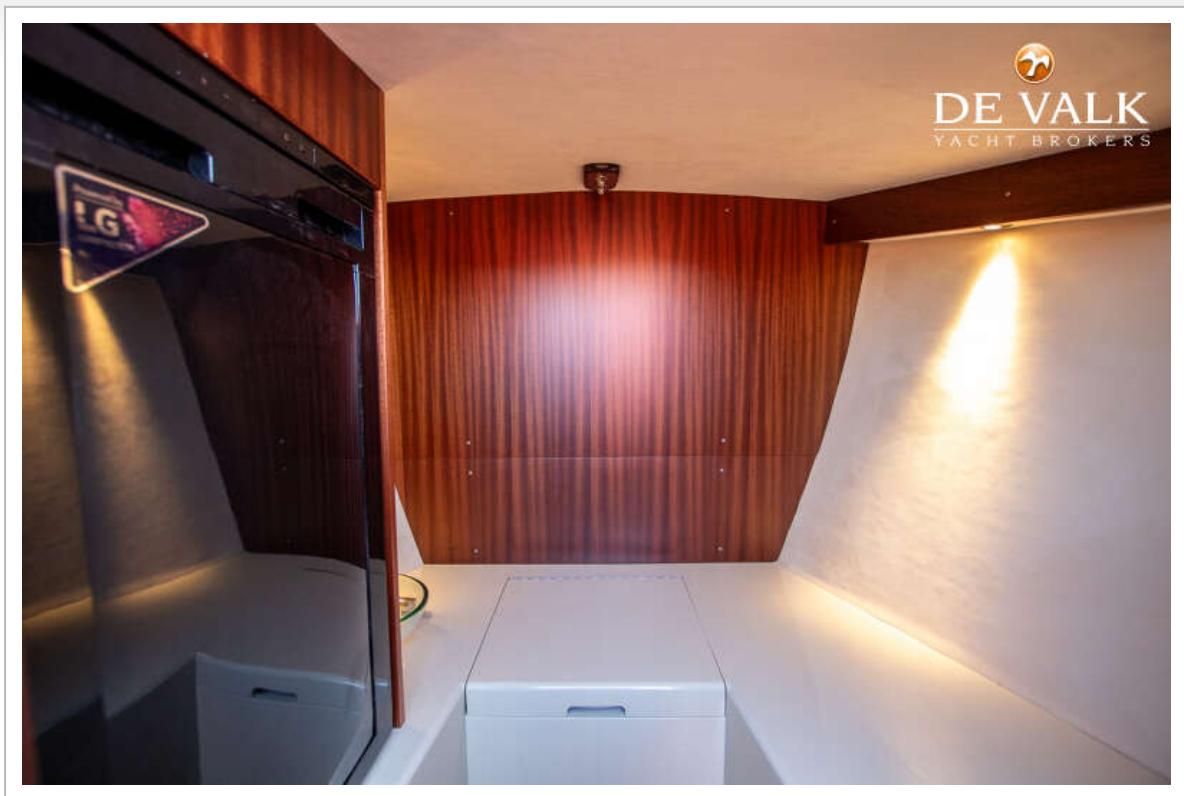
BRANDARIS BARKAS 900 TWIN ELECTRIC



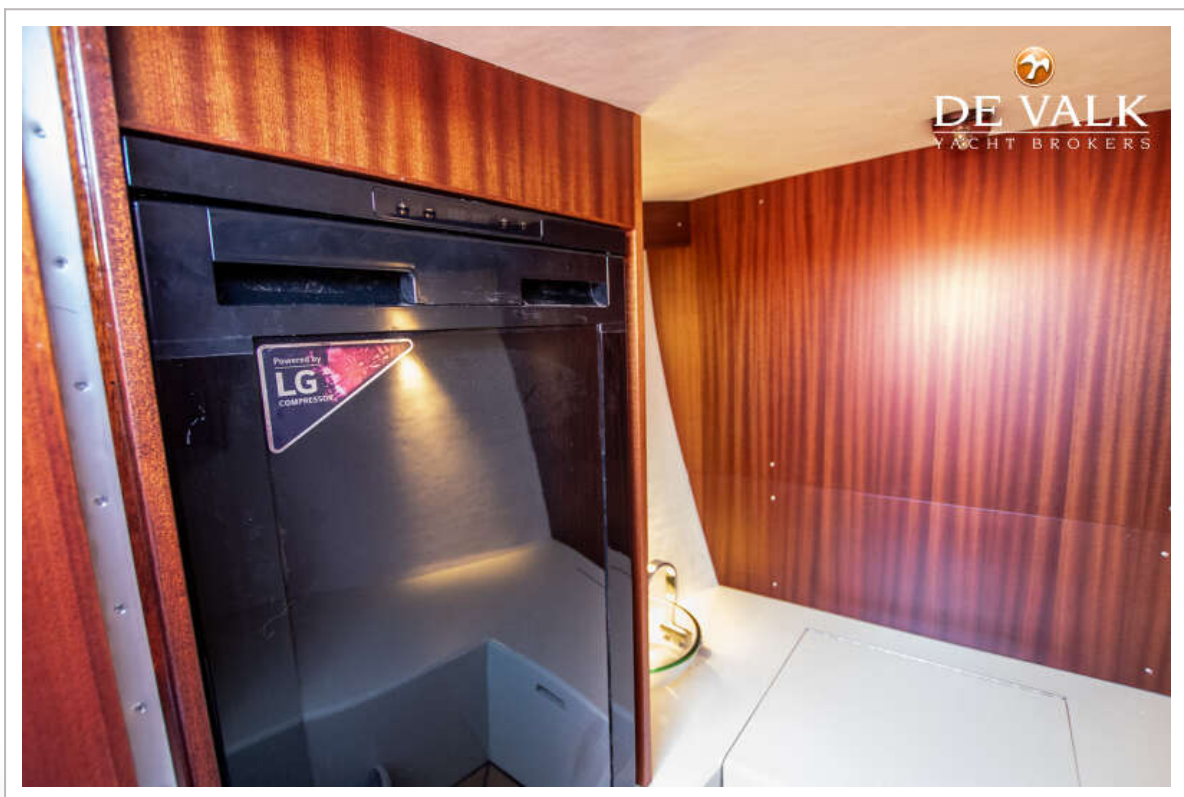
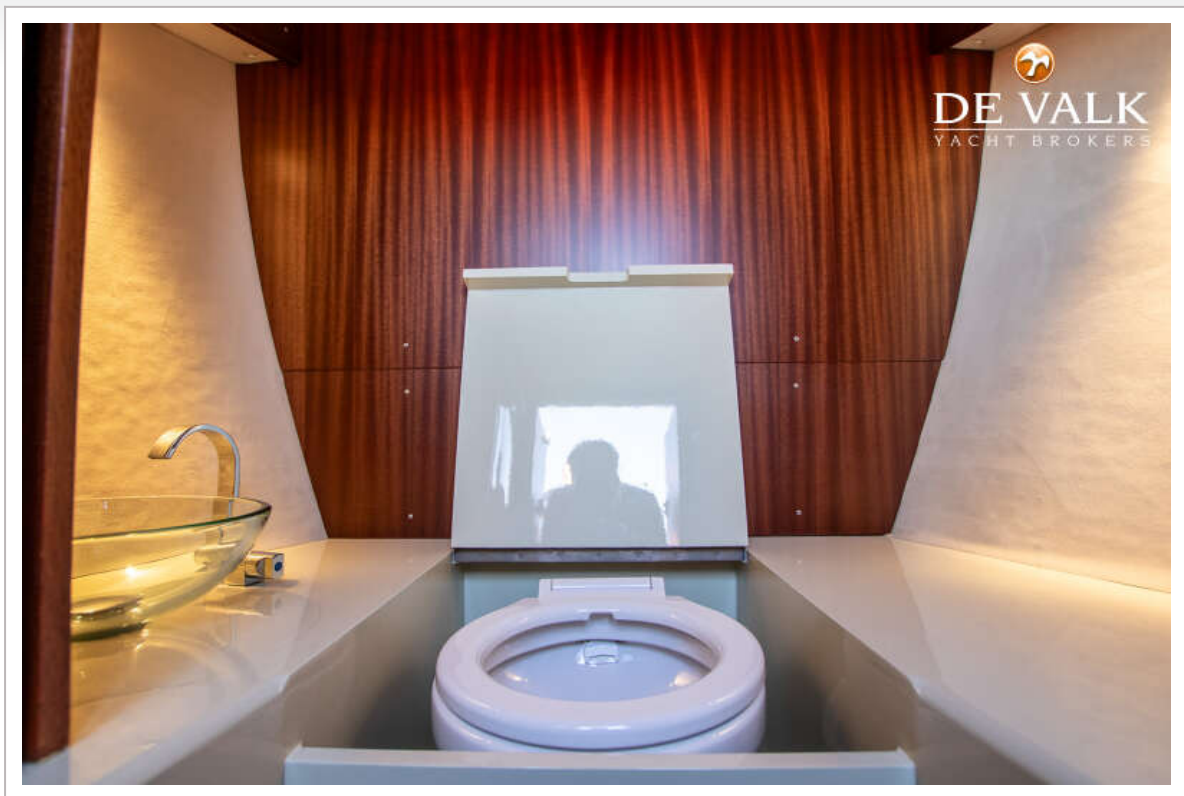
BRANDARIS BARKAS 900 TWIN ELECTRIC



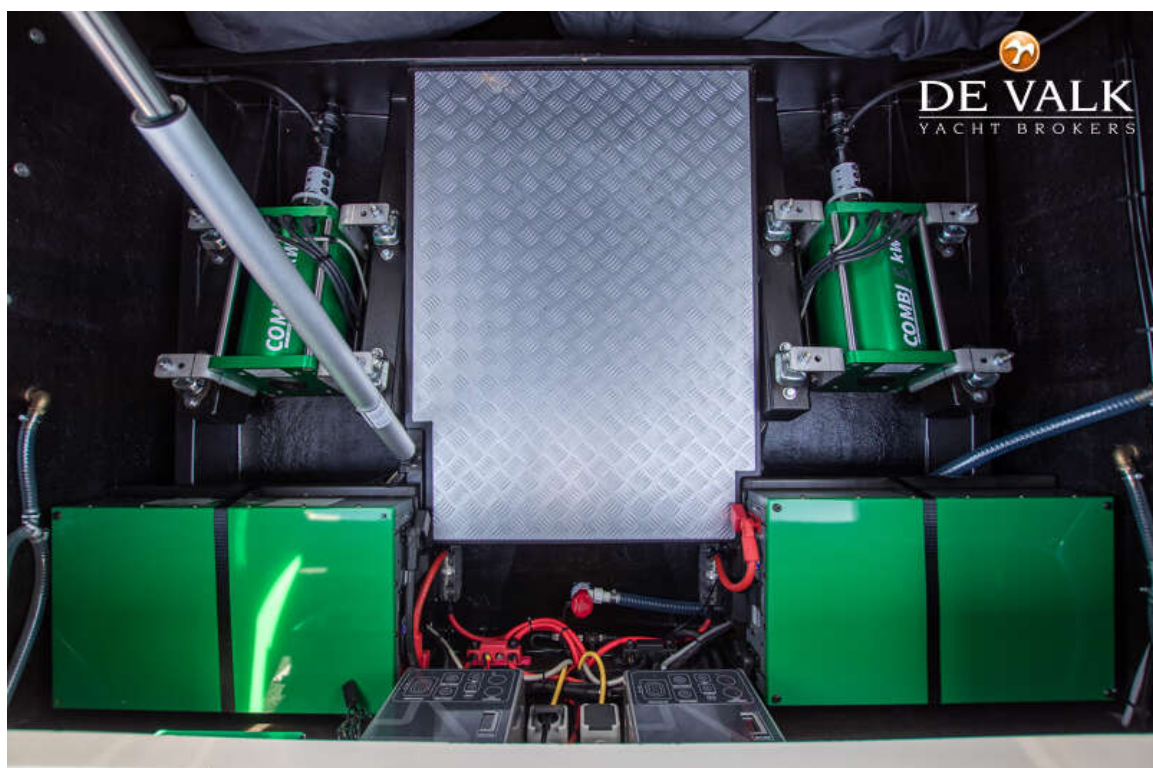
BRANDARIS BARKAS 900 TWIN ELECTRIC



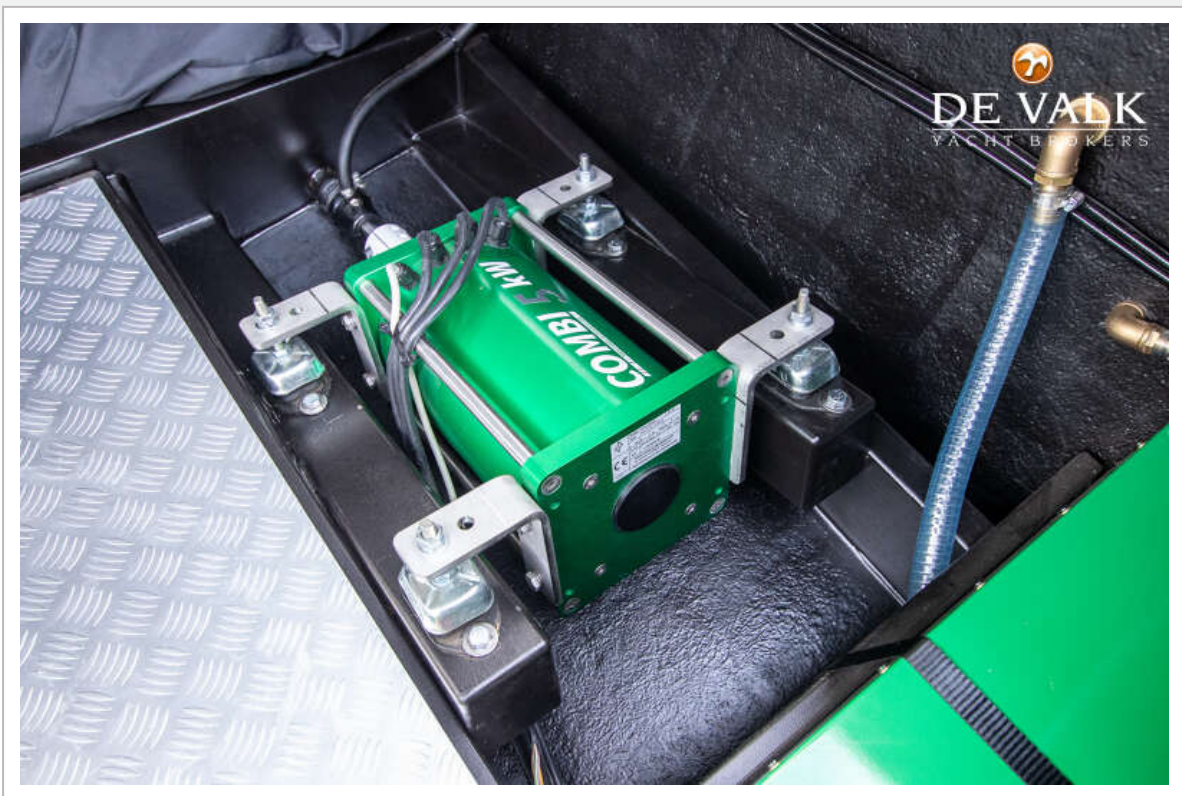
BRANDARIS BARKAS 900 TWIN ELECTRIC



BRANDARIS BARKAS 900 TWIN ELECTRIC



BRANDARIS BARKAS 900 TWIN ELECTRIC



BRANDARIS BARKAS 900 TWIN ELECTRIC



