



DE VALK  
YACHT BROKERS



FERRETTI 550



DE VALK  
YACHT BROKERS

## BROKER'S COMMENTS

Step aboard the Ferretti 550 #07 and feel the essence of Italian elegance at sea. Built in 2005, this 17.37 m yacht blends timeless design with exhilarating performance. Twin MAN 900 HP engines push her to an impressive 34 knots while offering a smooth, confident cruise at 28 knots. Inside, three refined cabins and a private crew area create a haven of comfort for family and friends. Expansive teak decks, a bright saloon and meticulous details ensure every journey becomes an unforgettable escape.

*Sjoerd Paddenburg*

## SPECIFICATIONS

<b>Dimensions</b>	17.37 x 4.93 x 1.50 (m)	<b>Builder</b>	
<b>Built</b>	2005	<b>Cabins</b>	3
<b>Material</b>	GRP	<b>Berths</b>	6
<b>Engine(s)</b>	2 x MAN diesel	<b>Hp/Kw</b>	2 x 900.00 (hp), 662.40 (kw)
<b>Asking price</b>	€ 489.000 (VAT Paid)	<b>Lying</b>	

## CONTACT

<b>Sales office</b>	De Valk Loosdrecht B.V.	<b>Telephone</b>	+31 (0)35 582 90 30
<b>Address</b>	't Breukeleveense Meentje 6 1231LM Loosdrecht / Wijdmeren NL	<b>E-mail</b>	loosdrecht@devalk.nl

## DISCLAIMER

These particulars are given in good faith as supplied but cannot be guaranteed.



## GENERAL

Model	FERRETTI 550
Type	motor yacht
LOA (m)	17,37
Beam (m)	4,93
Draft (m)	1,50
Year built	2005
Country	Italy
Displacement (t)	24
CE norm	B
Hull material	GRP
Hull colour	white
Hull shape	deep-V
Superstructure material	GRP
Rubbing strake	stainless steel
Deck material	GRP
Deck finish	non-skid moulded in
Superstructure deck finish	paint
Cockpit deck finish	teak
Antifouling (year)	2024
Window material	glass
Deckhatch	yes
Portholes	aluminium 6x
Flybridge	yes
Flybridge cover	yes
Radar arch	collapsible
Fuel tank (litre)	3100
Level indicator (fuel tank)	yes
Freshwater tank (litre)	620
Level indicator (freshwater)	yes
Blackwater tank (litre)	150



Level indicator (blackwater)	yes
Blackwater tank extraction	deck extraction + pump
Wheel steering	hydraulic
Inside helm position	yes
Flybridge helm position	hydraulic

## ACCOMMODATION

Cabins	3
Berths	6
Crew cabin	1
Crew berths	2
Interior	oak
Floor	wood
Saloon	yes
Headroom saloon (m)	2,00
Heating	diesel ducted hot air Webasto in salon
Air-conditioning	reverse cycle airco
Dinette	yes
Sliding door to cockpit	yes
Galley	yes
Countertop	granite
Sink	stainless steel
Cooker	ceramic
Oven	Bauknecht
Fridge	yes
Freezer	yes
Hot water system	220V Boiler
Water pressure system	electrical Hydrophore renewed in 2023
Dishwasher	yes
Owners cabin	French bed
Bed length (m)	2,00



Wardrobe	hanging/drawers/shelves
Bathroom	en suite
Toilet	en suite
Toilet system	electric
Wash basin	in the bathroom
Shower	en suite
Guest cabin 1	double bed
Bathroom	shared
Toilet	yes
Toilet system	electric
Wash basin	in the bathroom
Shower	shared
Guest cabin 2	twin single
Washing machine/dryer combi	yes
Flybridge	yes

## MACHINERY

No of engines	2
Make	MAN
HP	900
kW	662.40
Fuel	diesel
Maximum speed (kn)	32
Engine hours	1720
Engine cooling system	freshwater heat exchanger
Drive	shaft
Shaft seal	yes
Engine controls	electrical
Gearbox	hydraulic
Bowthruster	electric Side power
Sternthruster	electric Side power



Propeller type	fixed
Propeller blades	5
Propeller shaft material	stainless steel
Shaft lubrication	water
Manual bilge pump	yes
Electric bilge pump	3x
Bilge alarm	yes
Electrical installation	24V / 230 V
Generator	wet exhaust
Running hours generator	2100
Start battery	yes
Service battery	yes
Bowthruster battery	yes
Battery monitor	yes
Battery charger/inverter	Victron 24/3000/120
Shorepower	with cable
Insulation transformer	yes

## NAVIGATION

Depth sounder/log	Raymarine
VHF	Simrad
Autopilot	Raymarine
Rudder angle indicator	yes
Radar/GPS/plotter	2x Raymarine E120 and 1x Raymarine E90 on flybridge
Navigation lights	yes

## EQUIPMENT

Cockpit cushions	yes
Cockpit chairs	yes
Bathing platform	yes
Boarding ladder	stainless steel



Transom door	yes
Gangway	Besenzoni
Deck shower	yes
Anchor	yes
Anchor chain	yes
Windlass	electrical
Sea railing	stainless steel
Grab rail (superstructure)	yes
Railing side opening gates	yes
Wiper	yes





# FERRETTI 550





# FERRETTI 550



# FERRETTI 550





# FERRETTI 550





# FERRETTI 550



# FERRETTI 550





## FERRETTI 550





# FERRETTI 550



# FERRETTI 550

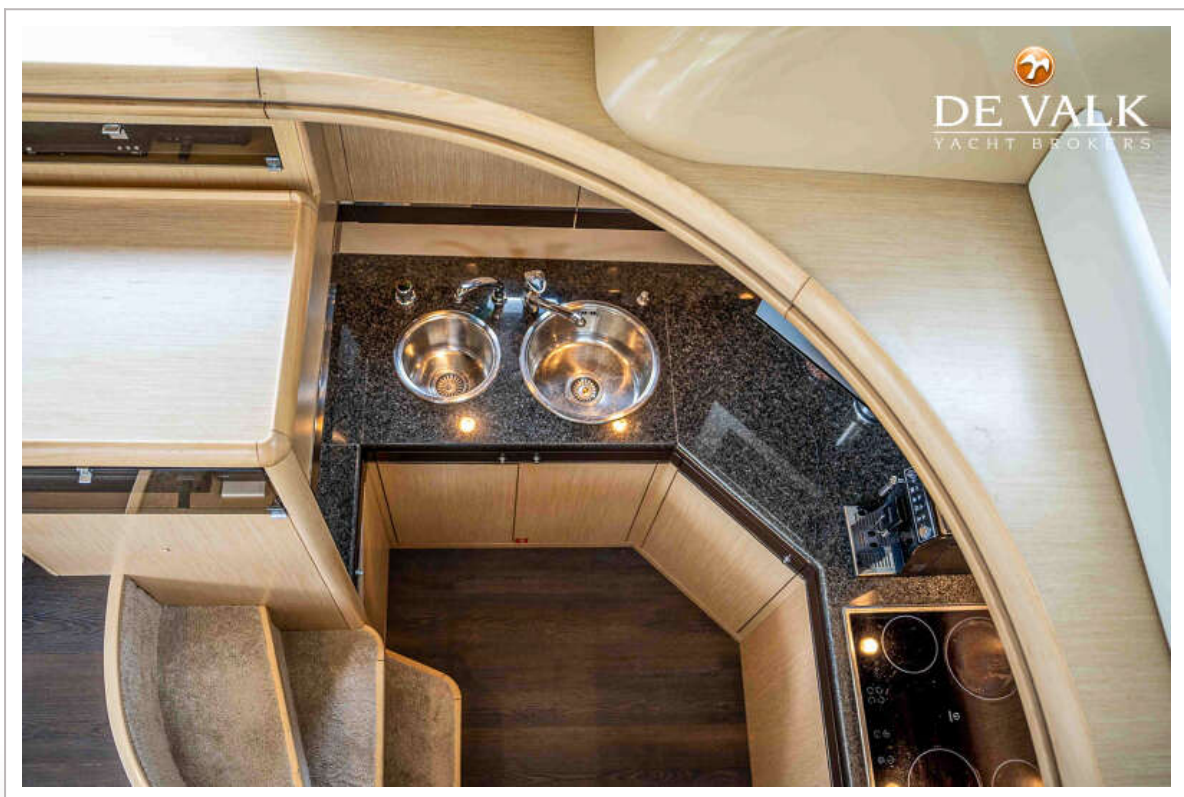
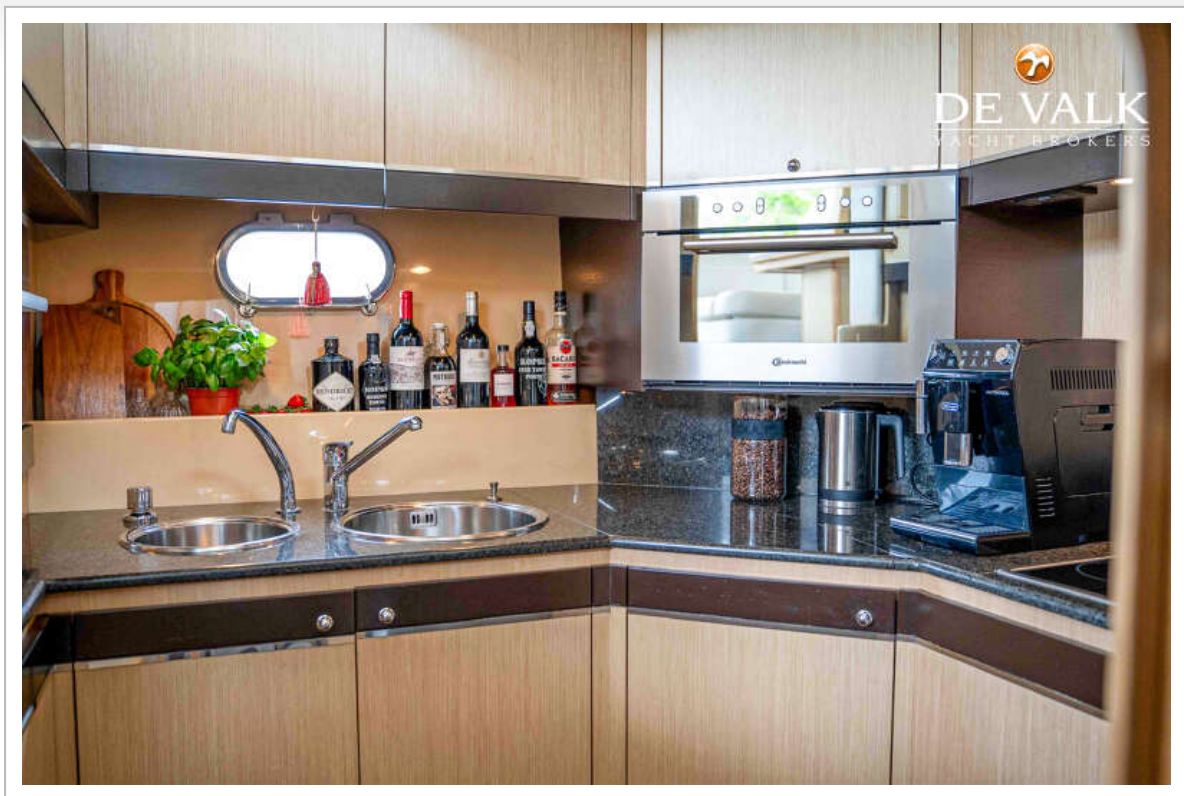




# FERRETTI 550



## FERRETTI 550





## FERRETTI 550



## FERRETTI 550

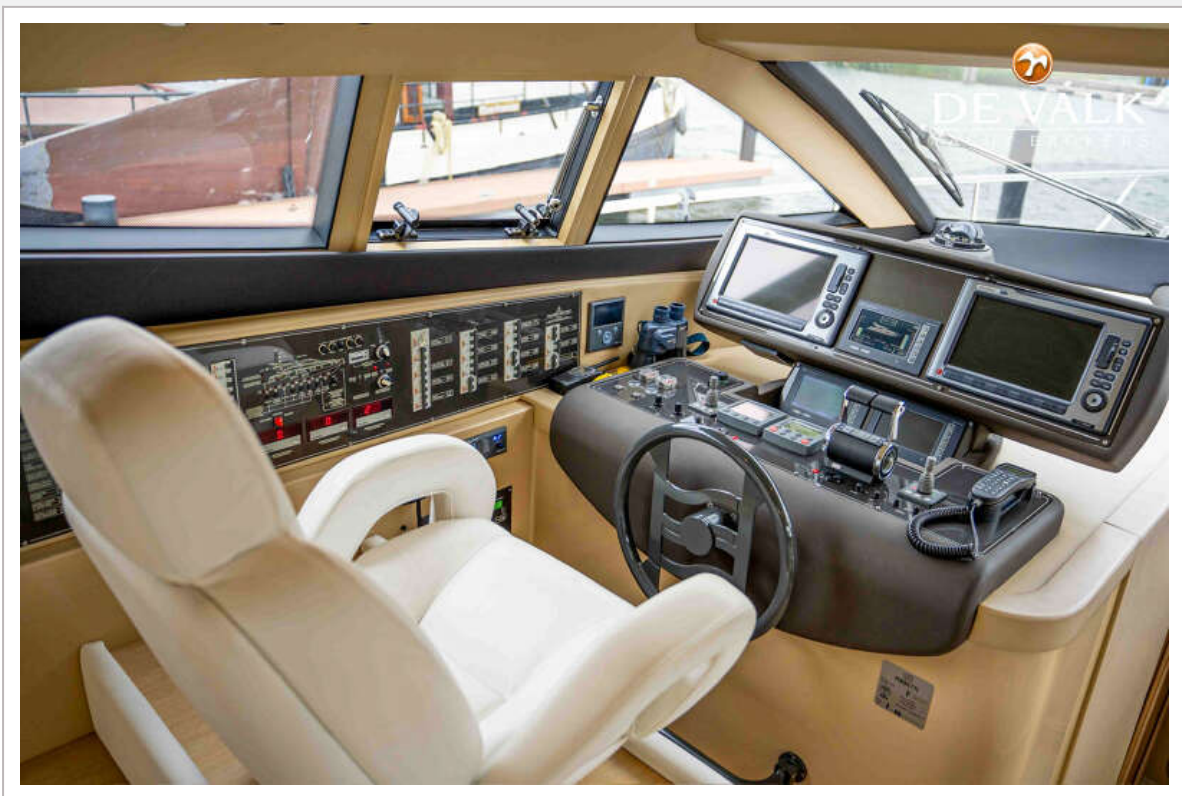




# FERRETTI 550

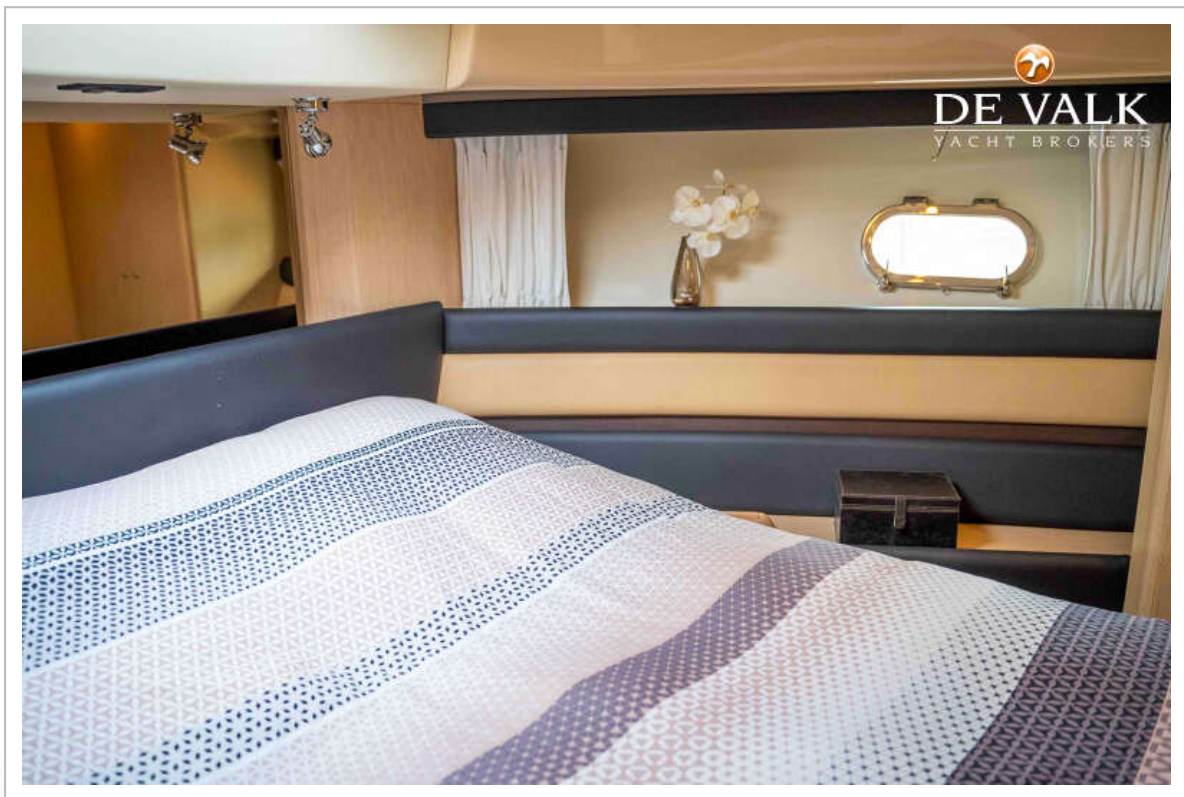
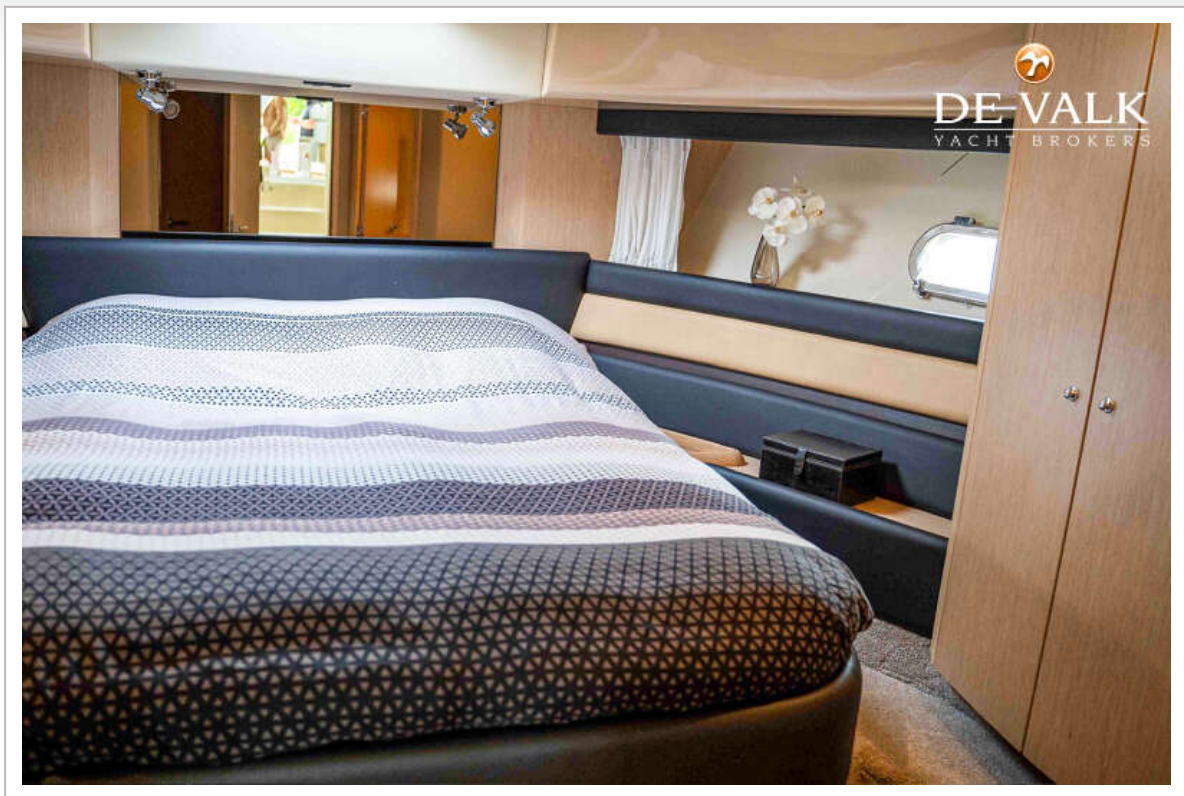


# FERRETTI 550





## FERRETTI 550



## FERRETTI 550

