



X-YACHTS X-50

X-YACHTS X-50

BROKER'S COMMENTS

Miss Sophie is a high performance X-50 for sale by her second owner. She comes with carbon mast and park-avenue boom, Reckmann genoa furler with carbon foils, generator, air conditioning etc. Extensively refitted in 2016 and since then regularly maintained by X-Yachts dealer in Slovenia.

Miha Spendal

SPECIFICATIONS

Dimensions	15.24 x 4.28 x 2.90 (m)	Builder	X-Yachts A/S
Built	2005	Cabins	3
Material	GRP	Berths	6
Engine(s)	1 x Volvo D2-75 diesel	Hp/Kw	75.00 (hp), 55.20 (kw)
Asking price	€ 329.900 (VAT Paid)	Lying	at sales office

CONTACT

Sales office	De Valk Istria	Telephone	+386 (1) 600 2704
Address	(Marina Izola) Dantejeva Ulica 22 6310 Izola SI	E-mail	istria@devalk.nl

DISCLAIMER

These particulars are given in good faith as supplied but cannot be guaranteed.



GENERAL

Model	X-YACHTS X-50
Type	sailing yacht
LOA (m)	15,24
LWL (m)	13,14
Beam (m)	4,28
Draft (m)	2,90
Headroom (m)	2,05
Year built	2005
Launched	2005
Builder	X-Yachts A/S
Country	Denmark
Designer	Niels Jeppesen
Displacement (t)	12,4
Ballast (tonnes)	lead 4,96
CE norm	A
Hull material	GRP
Hull colour	blue AWL CRAFT painted
Keel type	bulb keel
Superstructure material	GRP
Deck material	GRP
Deck finish	teak
Cockpit deck finish	teak
Antifouling (year)	2025
Window frame	aluminium
Window material	polycarbonate
Fuel tank (litre)	242
Level indicator (fuel tank)	yes
Fuel daytank (litre)	aluminium 70
Level indicator (daytank)	yes
Freshwater tank (litre)	550



Level indicator (freshwater)	yes
Blackwater tank (litre)	yes
Blackwater tank extraction	deck extraction + pump
Wheel steering	cable steering
Emergency tiller	yes
More info on hull	Closed foam sandwich

ACCOMMODATION

Cabins	3
Berths	6
Saloon	yes
Headroom saloon (m)	2,05
Heating	With reverse cycle aircon
Air-conditioning	reverse cycle airco
Chart table	yes
Dinette	yes
Galley	yes
Countertop	plastic
Sink	stainless steel
Cooker	calor gas
Oven	yes
Microwave	yes
Fridge	yes
Hot water system	220V + engine
Water pressure system	electrical
Owners cabin	double bed
Bed length (m)	2,1
Wardrobe	hanging/drawers/shelves
Bathroom	en suite
Toilet	en suite
Toilet system	vacuum



Shower	en suite
Guest cabin 1	double bed
Bed length (m)	2,1
Wardrobe	hanging and shelves
Bathroom	en suite
Toilet	en suite
Toilet system	manual
Wash basin	in the bathroom
Shower	en suite
Guest cabin 2	double bed
Bed length (m)	2,1
Wardrobe	hanging and shelves
Bathroom	en suite
Toilet	en suite
Toilet system	manual
Wash basin	in the bathroom
Shower	en suite

MACHINERY

No of engines	1
Make	Volvo
Type	D2-75
HP	75
kW	55.20
Fuel	diesel
Year installed	2005
Year of overhaul	Yearly service
Maximum speed (kn)	10
Cruising speed (kn)	8
Consumption (l/hr)	5
Engine hours	1500



Engine cooling system	freshwater heat exchanger
Drive	sail-drive
Saildrive seal	Exchanged 2020
Engine controls	bowden cable
Gearbox	mechanical
Bowthruster	electric Max Power retractable
Propeller type	folding 3-Blade
Propeller blades	NiBron
Manual bilge pump	yes
Electric bilge pump	yes
Electrical installation	yes
Generator	Fischer Panda
Batteries	yes
Start battery	New 2025
Service battery	4x180Ah, AGM New 2025
Generator battery	yes
Bowthruster battery	yes
Battery monitor	yes
Battery charger/inverter	Mastervolt
Shorepower	with cable

NAVIGATION

Compass	yes
Electric compass	yes
Depth sounder	B&G
Log	B&G
Windset	B&G
VHF	Sailor
VHF handheld	yes
Autopilot	B&G
Rudder angle indicator	yes



GPS	B&G
Plotter/GPS	yes
Radar/GPS/plotter	B&G
AIS transceiver	yes
Radio receiver	yes
Navigation lights	yes

EQUIPMENT

Sprayhood with grab rail	yes
Bimini	yes
Cockpit table	Removable, teak top, foldable
Boarding ladder	stainless steel
Gangway	Carbon, GS
Deck shower	yes
Anchor	Delta
Anchor chain	50m
Windlass	electrical
Fenders	yes
Mooring lines	yes
Cockpit speakers	yes
Speakers in salon	yes
Fire extinguisher	yes

RIGGING

Rigging	sloop
Standing rigging	Rod Exchanged 2017
Brand mast	Nordic
Material mast	carbon
Spreaders	3, Aluminium
Keel stepped mast	yes
Mainsail	Park Avenue carbon boom



Mainsail cover	yes
Battcars	Frederiksen - Ronstan
Fully battened mainsail	yes
Jib	Self tacking
Genoa	yes
Genoa furler	yes
Gennaker	yes
Self tacking jib installation	yes
Reefing System	quick-one-line-reefing
Backstay adjuster	hydraulic
Boomvang	hydraulic
Secondary sheet winch	2 x Harken Manual for main sail (german system)
Genoa sheetwinches	2 x Harken Electric
Halyard winches	2 x Harken Manual (can be driven with the genoa electric winches
Spi-pole	carbon



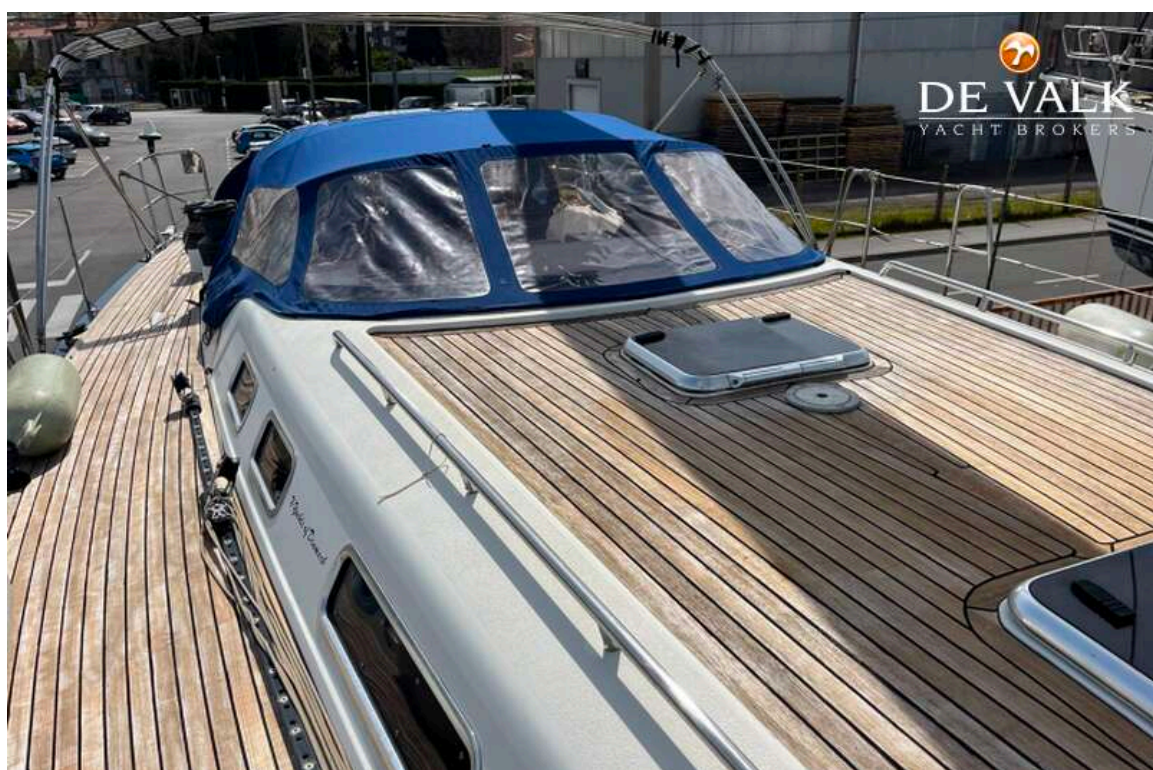
X-YACHTS X-50



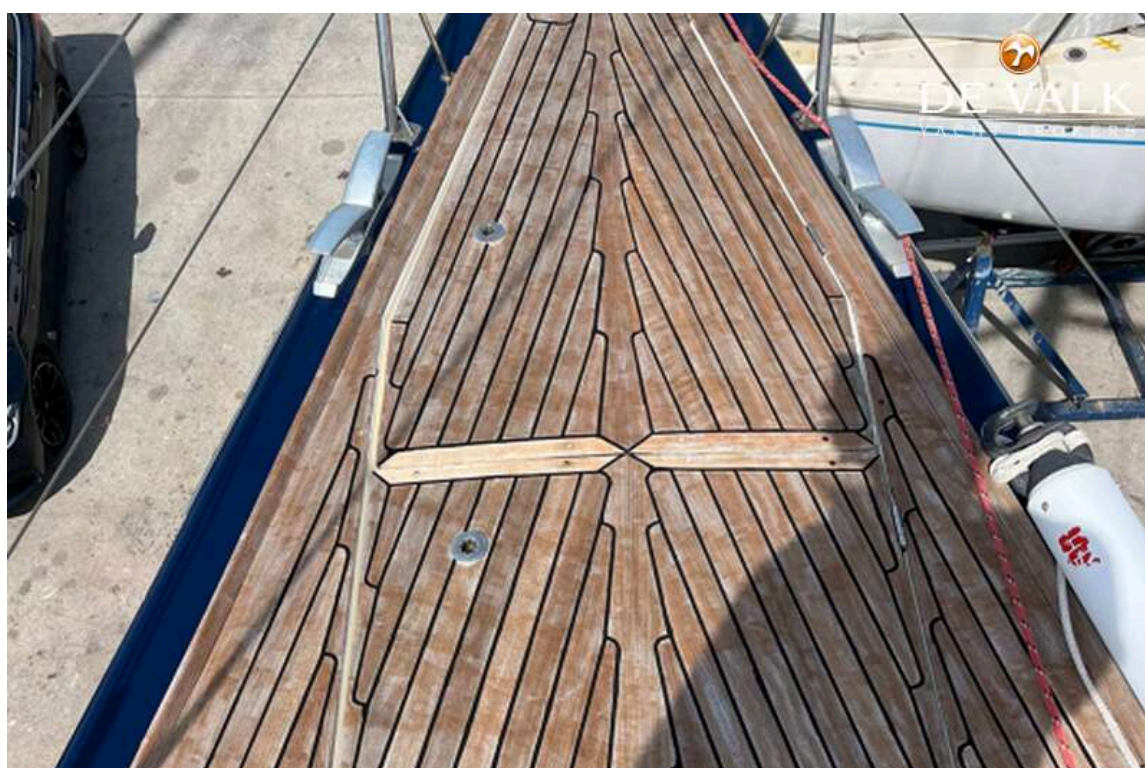
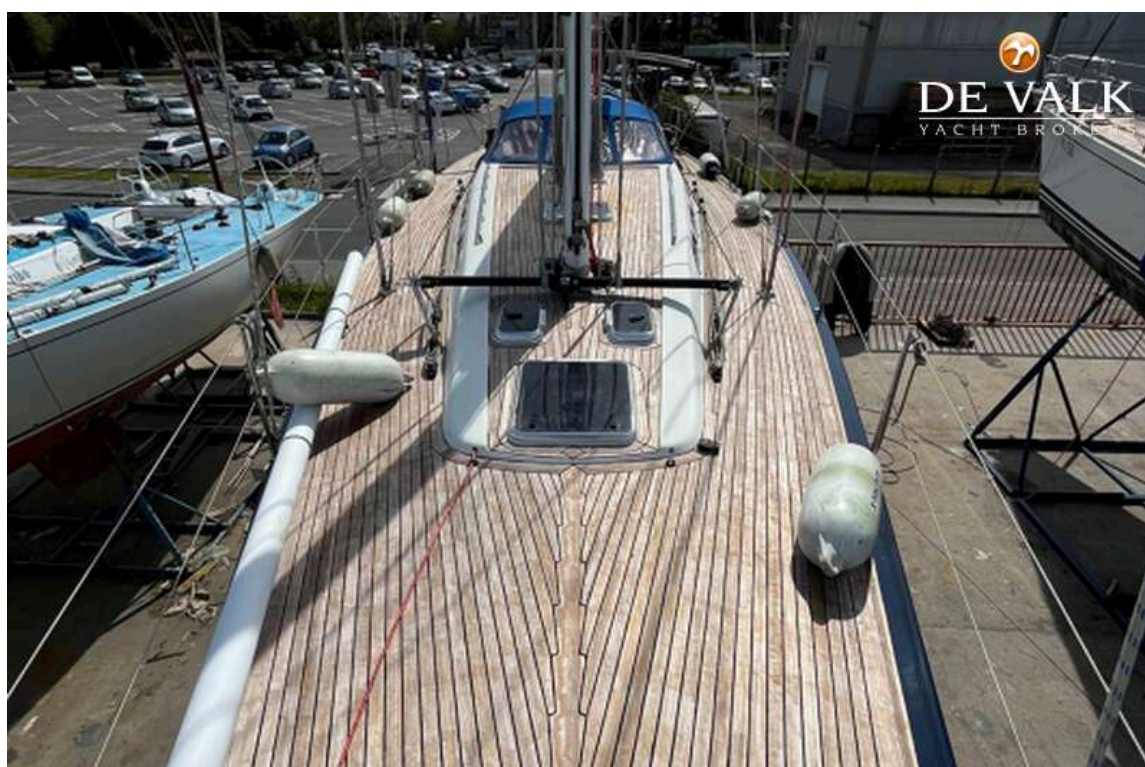
X-YACHTS X-50



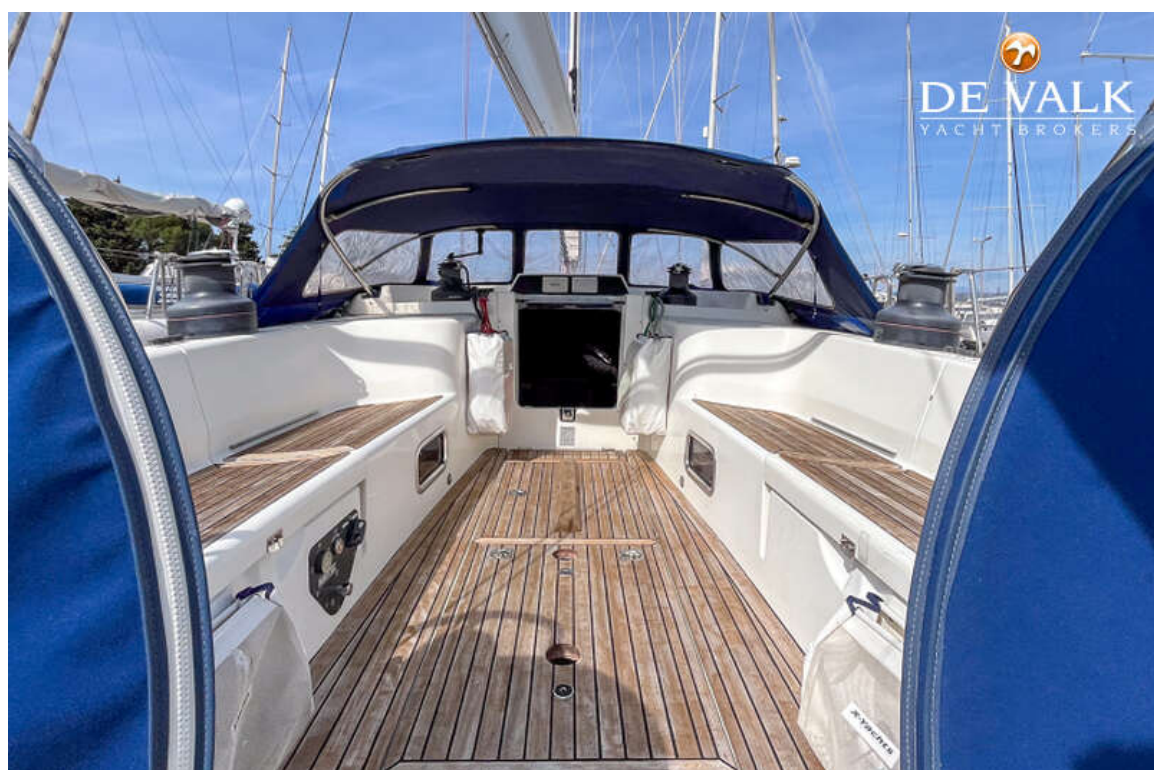
X-YACHTS X-50



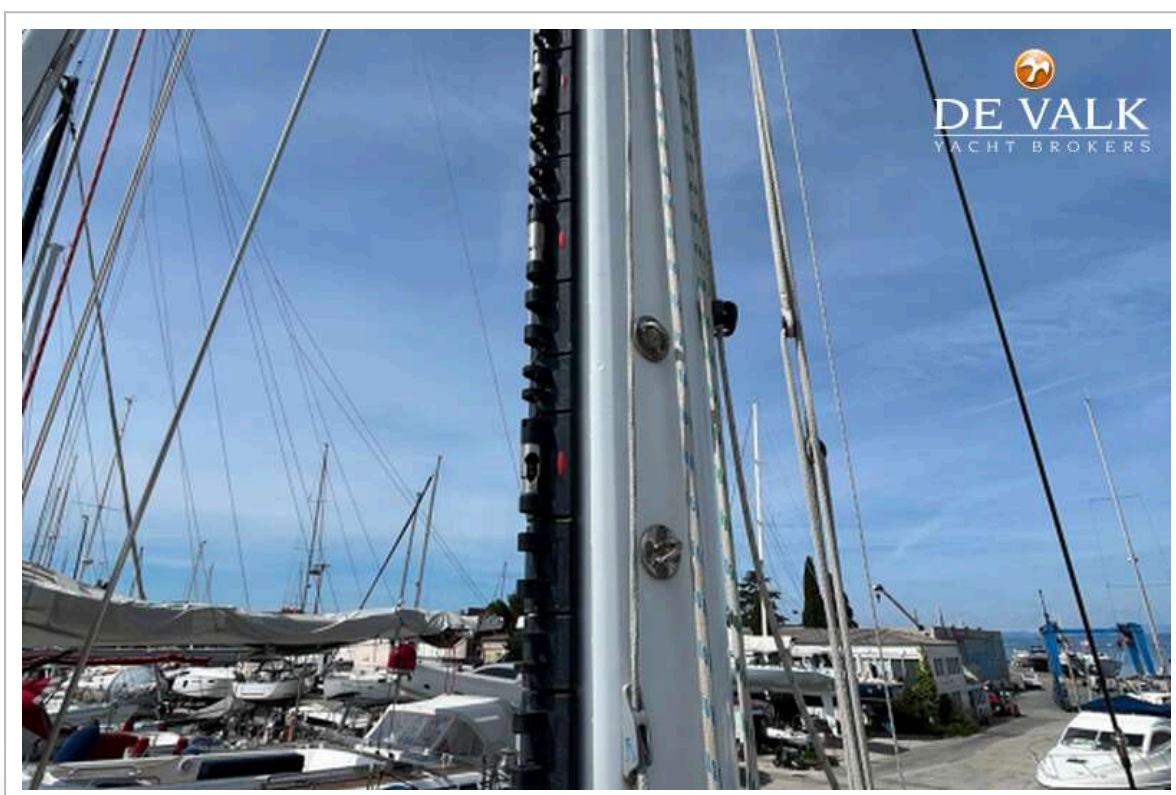
X-YACHTS X-50



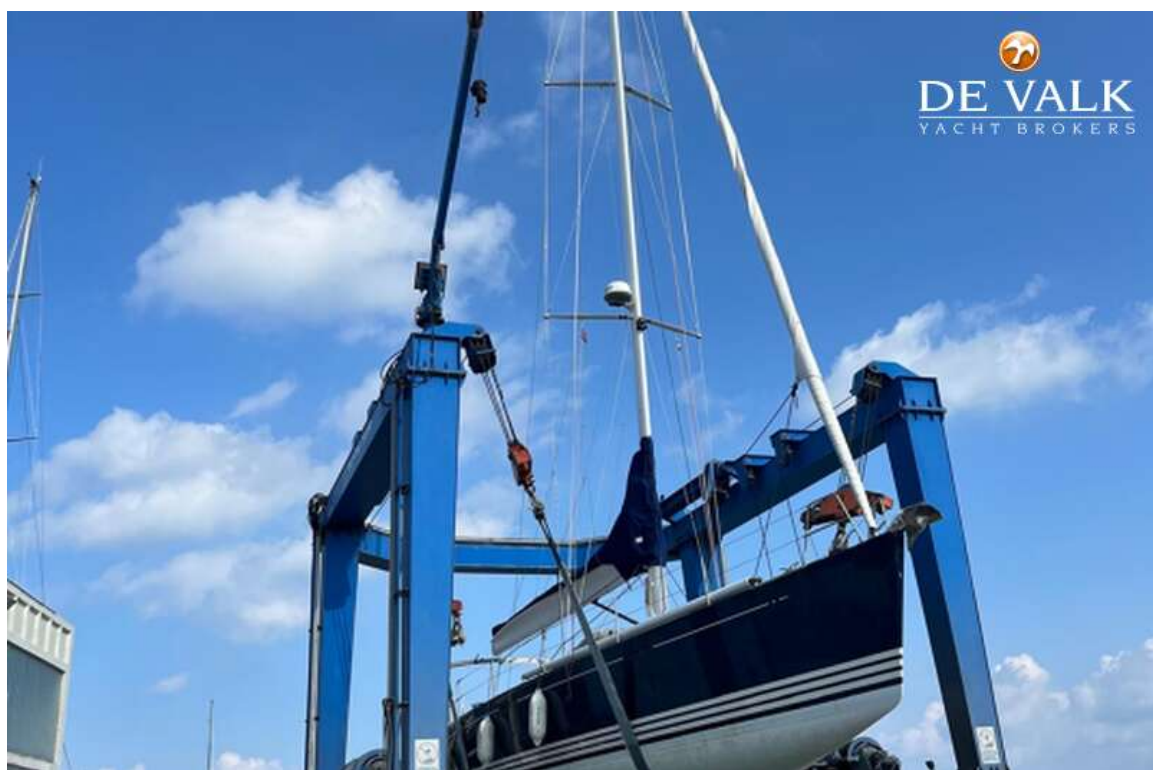
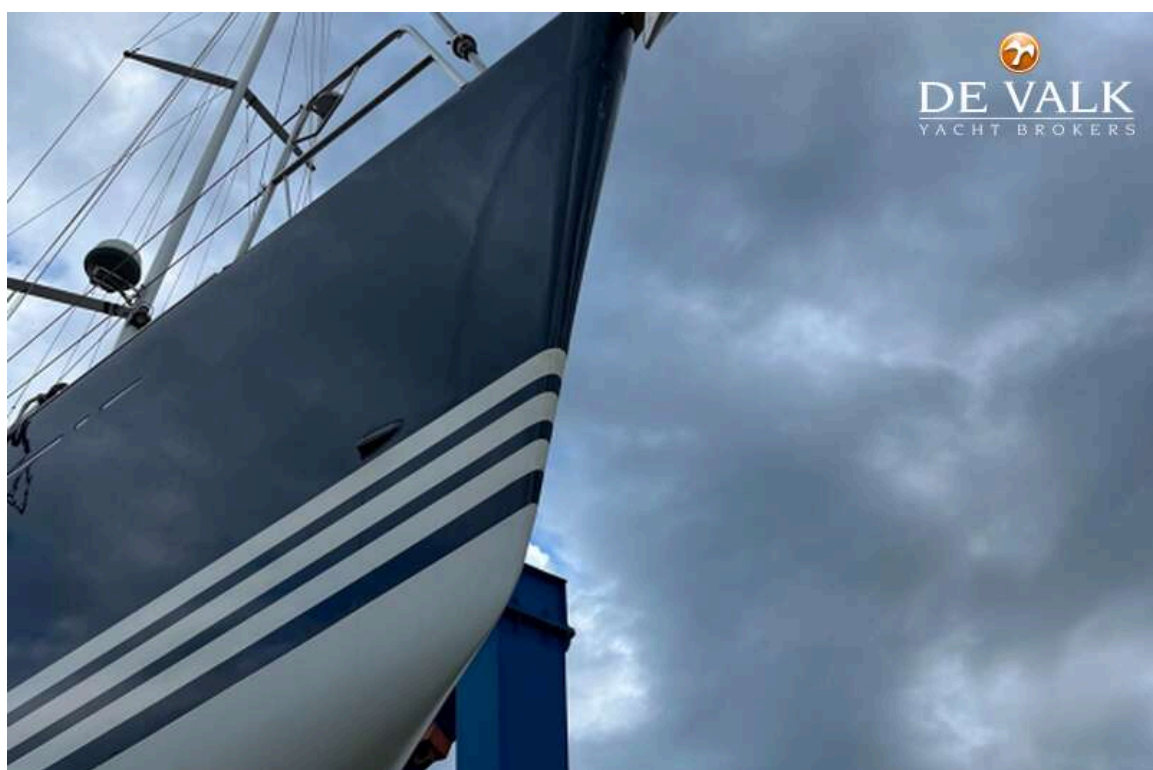
X-YACHTS X-50



X-YACHTS X-50



X-YACHTS X-50



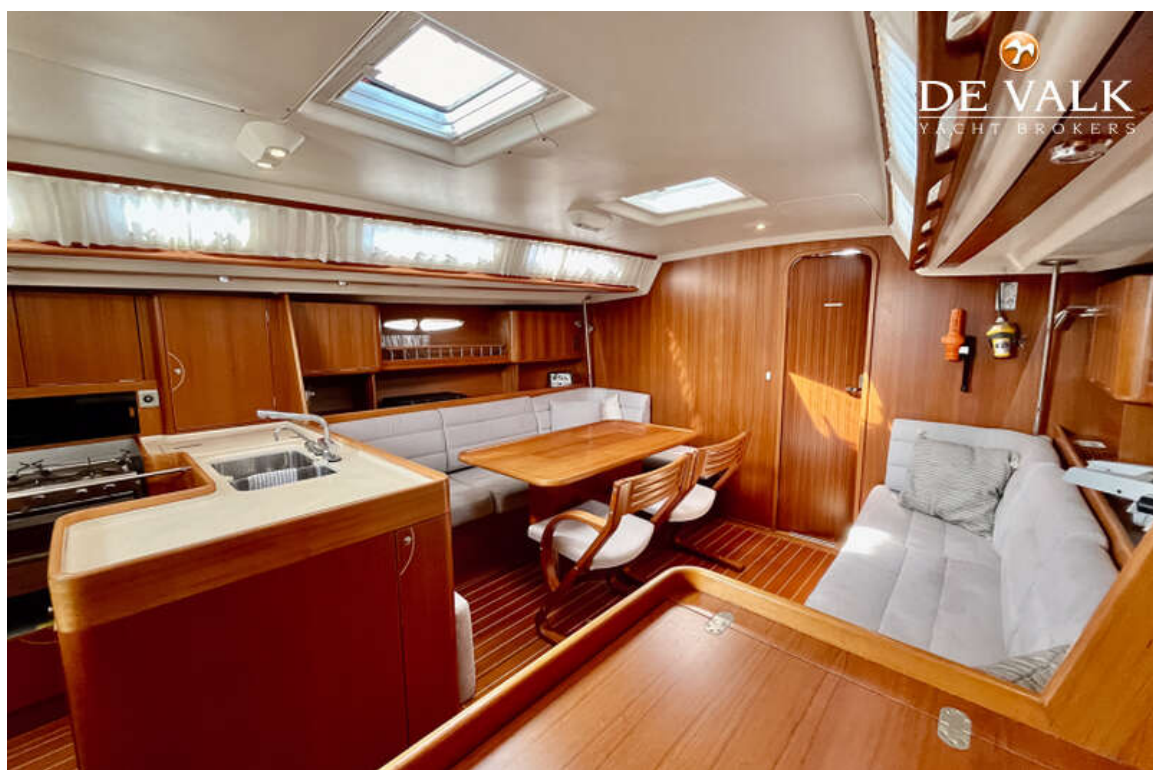
X-YACHTS X-50



X-YACHTS X-50



X-YACHTS X-50



X-YACHTS X-50



X-YACHTS X-50



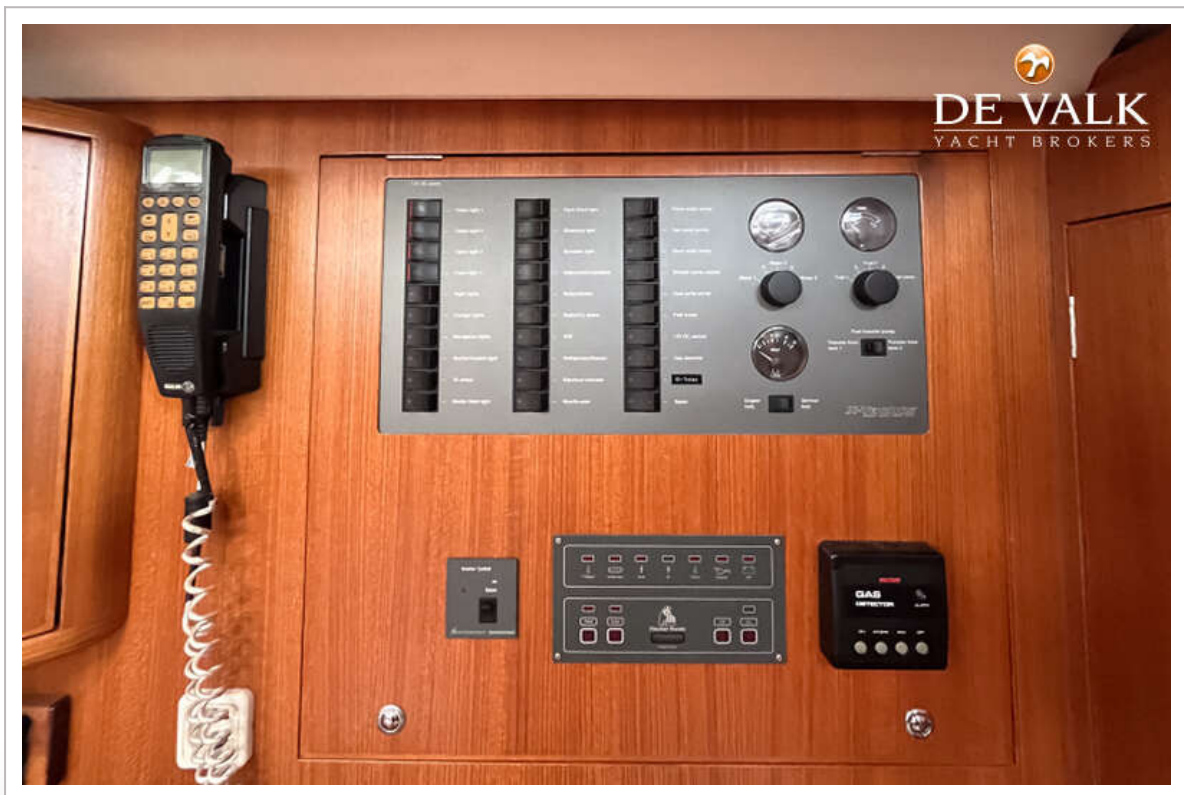
X-YACHTS X-50



X-YACHTS X-50



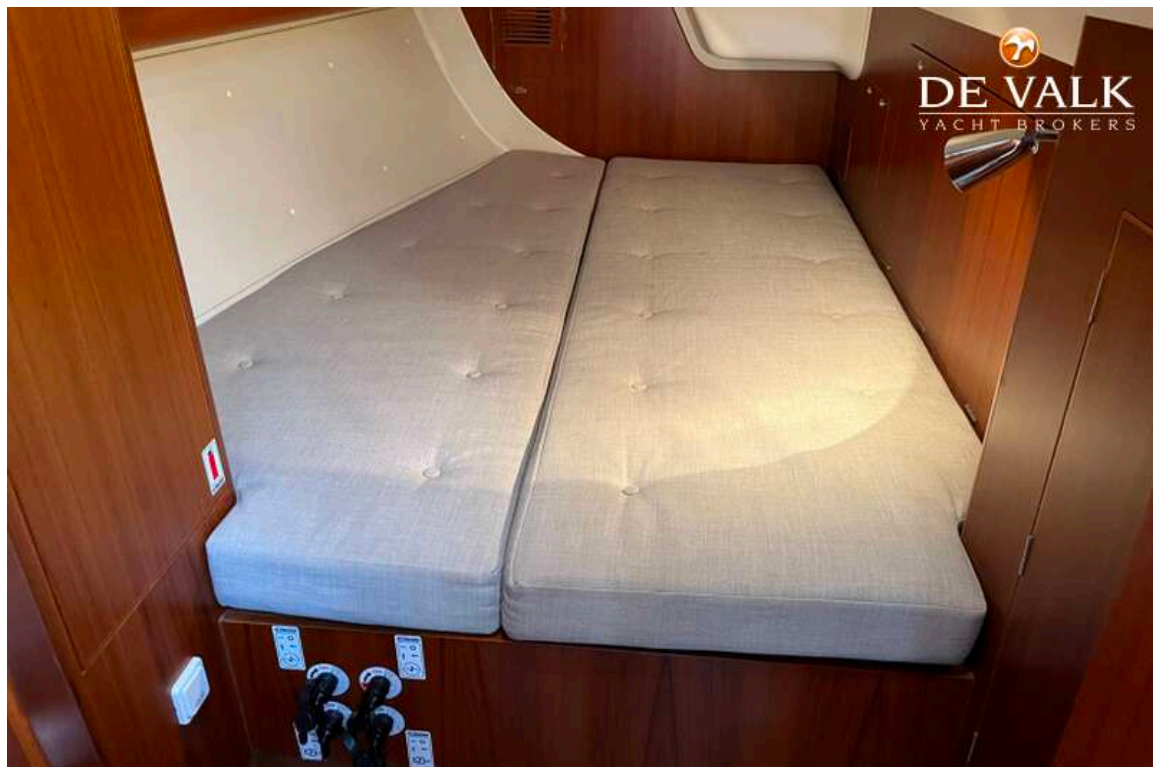
X-YACHTS X-50



X-YACHTS X-50



X-YACHTS X-50



X-YACHTS X-50



X-YACHTS X-50

