



DE VALK  
YACHT BROKERS



## MAREX 370 AFT CABIN CRUISER



DE VALK  
YACHT BROKERS

# MAREX 370 AFT CABIN CRUISER

## BROKER'S COMMENTS

Marex 370 ACC 'the Sun' built in 2012, equipped with a Volvo Penta D6 with 435 hp, a solid Norwegian-built polyester motor yacht. The 370 ACC has a fantastic layout and is well equipped: bow and stern thrusters with remote control, heating, optional luxury upholstery, large sun deck aft, electrically operated anchor winch with remote control. A truly beautiful and complete Marex 370 ACC. In terms of looks, technology and technical condition, it's ready to set sail and head for the Sun. The Marex is located in our covered sales marina in Sneek.

*Henk de Vries*

## SPECIFICATIONS

<b>Dimensions</b>	11.30 x 3.50 x 1.00 (m)	<b>Builder</b>	Marex Yachts
<b>Built</b>	2012	<b>Cabins</b>	2
<b>Material</b>	GRP	<b>Berths</b>	5
<b>Engine(s)</b>	1 x Volvo Penta D6 435I-E diesel	<b>Hp/Kw</b>	435.00 (hp), 320.16 (kw)
<b>Asking price</b>	Under Offer (VAT )	<b>Lying</b>	contact Sneek

## CONTACT

<b>Sales office</b>	De Valk Sneek	<b>Telephone</b>	+31 (0)515 42 80 30
<b>Address</b>	Zwolsmanweg 7 8606 KC Sneek NL	<b>E-mail</b>	sneek@devalk.nl

## DISCLAIMER

These particulars are given in good faith as supplied but cannot be guaranteed.



# MAREX 370 AFT CABIN CRUISER

## GENERAL

Model	MAREX 370 AFT CABIN CRUISER
Type	motor yacht
LOA (m)	11,30
LWL (m)	8,98
Beam (m)	3,50
Draft (m)	1,00
Air draft (m)	3,70
Air draft min (m)	2,40
Headroom (m)	1,95
Year built	2012
Launched	2012
Builder	Marex Yachts
Country	Norway
Designer	Willem Nieland
Displacement (t)	7
CE norm	B
Hull material	GRP
Hull colour	beige
Hull shape	V-shaped hull
Superstructure material	GRP
Rubbing strake	stainless steel
Deck material	GRP
Deck finish	teak
Superstructure deck finish	teak
Cockpit deck finish	teak
Dorades	yes
Window frame	aluminium
Window material	glass Ertec Pilkington, toughend safety glass.
Deckhatch	yes
Portholes	yes



# MAREX 370 AFT CABIN CRUISER

Insulation	foam
Fuel tank (litre)	polyethylene 660
Level indicator (fuel tank)	yes
Freshwater tank (litre)	polyethylene 385
Level indicator (freshwater)	yes
Blackwater tank (litre)	polyethylene 120
Level indicator (blackwater)	yes
Blackwater tank extraction	deck extraction
Wheel steering	hydraulic
Inside helm position	yes

## ACCOMMODATION

Cabins	2
Berths	5
Floor	teak and holly
Open cockpit	yes
Aft deck	yes
Deck saloon	yes
Headroom saloon (m)	2,0
Sliding roof	manual
Heating	diesel ducted hot air Eberspacher
Aft Cabin	yes
Galley	yes
Countertop	corian
Sink	corian
Cooker	calor gas 3-pits ENO
Oven	ENO
Fridge	Isotherm 1130BB with small freezer
Freezer	Isotherm
Hot water system	220V + engine & Boiler Quick
Water pressure system	electrical



# MAREX 370 AFT CABIN CRUISER

Owners cabin	French bed
Bed length (m)	2,0
Wardrobe	hanging/drawers/shelves
Bathroom	shared
Toilet	shared
Toilet system	electric
Wash basin	at the toilet
Shower	yes
Guest cabin 1	double bed & 1 single
Bed length (m)	2,0
Wardrobe	drawers and shelves
Bathroom	shared
Toilet	shared
Toilet system	electric
Wash basin	in the cabin
Shower	shared

## MACHINERY

No of engines	1
Make	Volvo Penta
Type	D6 435I-E
HP	435
kW	320.16
Fuel	diesel
Maximum speed (kn)	35
Cruising speed (kn)	25
Engine hours	Ca.845
Engine cooling system	freshwater heat exchanger
Drive	shaft
Shaft seal	yes
Engine controls	Volvo Penta



# MAREX 370 AFT CABIN CRUISER

<b>Gearbox</b>	hydraulic
<b>Bowthruster</b>	electric Side Power with remote control
<b>Sternthruster</b>	electric Side Power with remote control
<b>Exhaust</b>	watercooled
<b>Propeller type</b>	fixed
<b>Propeller blades</b>	4
<b>Propeller shaft material</b>	stainless steel
<b>Shaft lubrication</b>	water
<b>Manual bilge pump</b>	2x
<b>Electric bilge pump</b>	2x
<b>Electrical installation</b>	12V / 220V
<b>Batteries</b>	7x
<b>Start battery</b>	1x 100 Ah
<b>Service battery</b>	4x 100 Ah
<b>Bowthruster battery</b>	1x
<b>Sternthruster battery</b>	1x
<b>Battery monitor</b>	yes
<b>Battery charger/inverter</b>	Victron Energy MultiPlus 12/3000/120
<b>Shorepower</b>	with cable

## NAVIGATION

<b>Compass</b>	Ritchie
<b>Electric compass</b>	Raymarine Hybrid Touch
<b>Plotter/GPS</b>	Raymarine Hybrid Touch

## EQUIPMENT

<b>Fixed windscreen</b>	yes
<b>Cockpit cushions</b>	yes
<b>Bathing platform</b>	yes
<b>Anchor</b>	yes
<b>Anchor chain</b>	yes



# MAREX 370 AFT CABIN CRUISER

Windlass	electrical With remote control
Sea railing	yes
Grab rail (superstructure)	yes
Wiper	3x
Horn	electric
Fenders	yes
Mooring lines	yes
TV	Flatscreen
Speakers in salon	Sony
Clock - barometer	Wempe
Fire extinguisher	yes
Auto extinguisher system	In engine room





# MAREX 370 AFT CABIN CRUISER





# MAREX 370 AFT CABIN CRUISER



# MAREX 370 AFT CABIN CRUISER





# MAREX 370 AFT CABIN CRUISER



# MAREX 370 AFT CABIN CRUISER





# MAREX 370 AFT CABIN CRUISER



## MAREX 370 AFT CABIN CRUISER



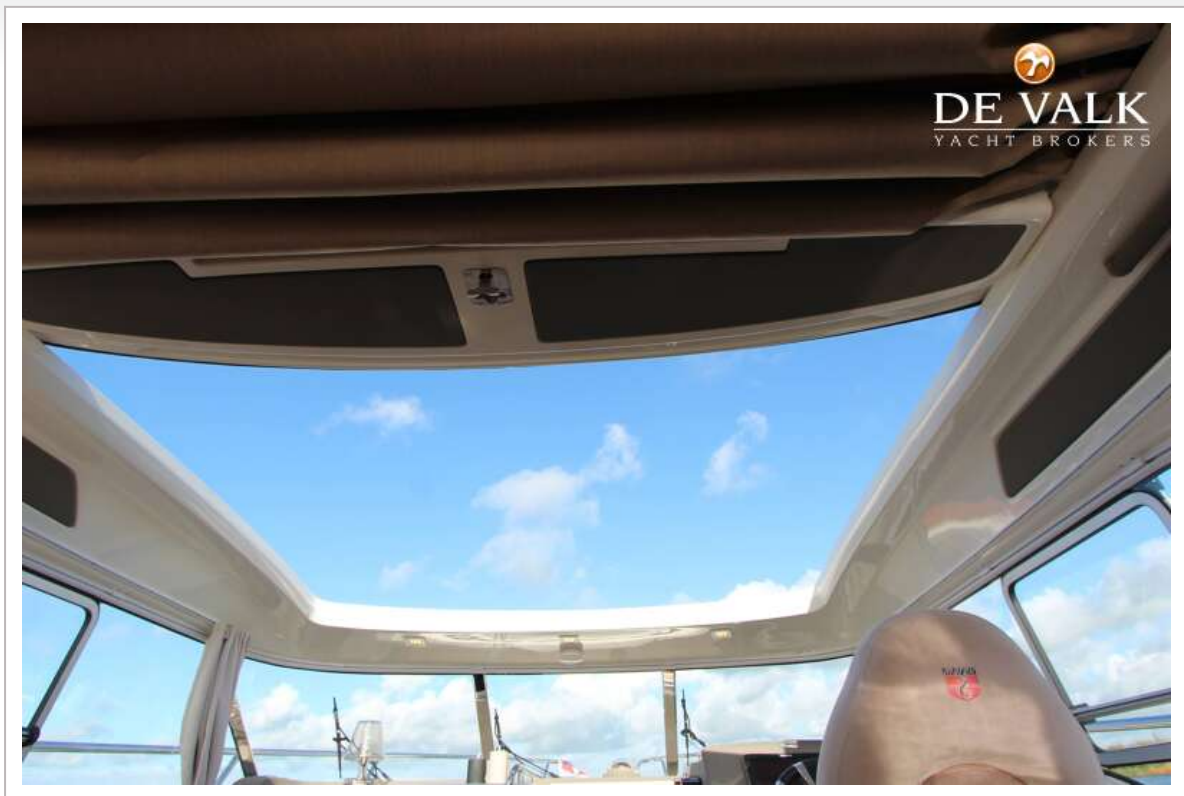


# MAREX 370 AFT CABIN CRUISER





# MAREX 370 AFT CABIN CRUISER



## MAREX 370 AFT CABIN CRUISER

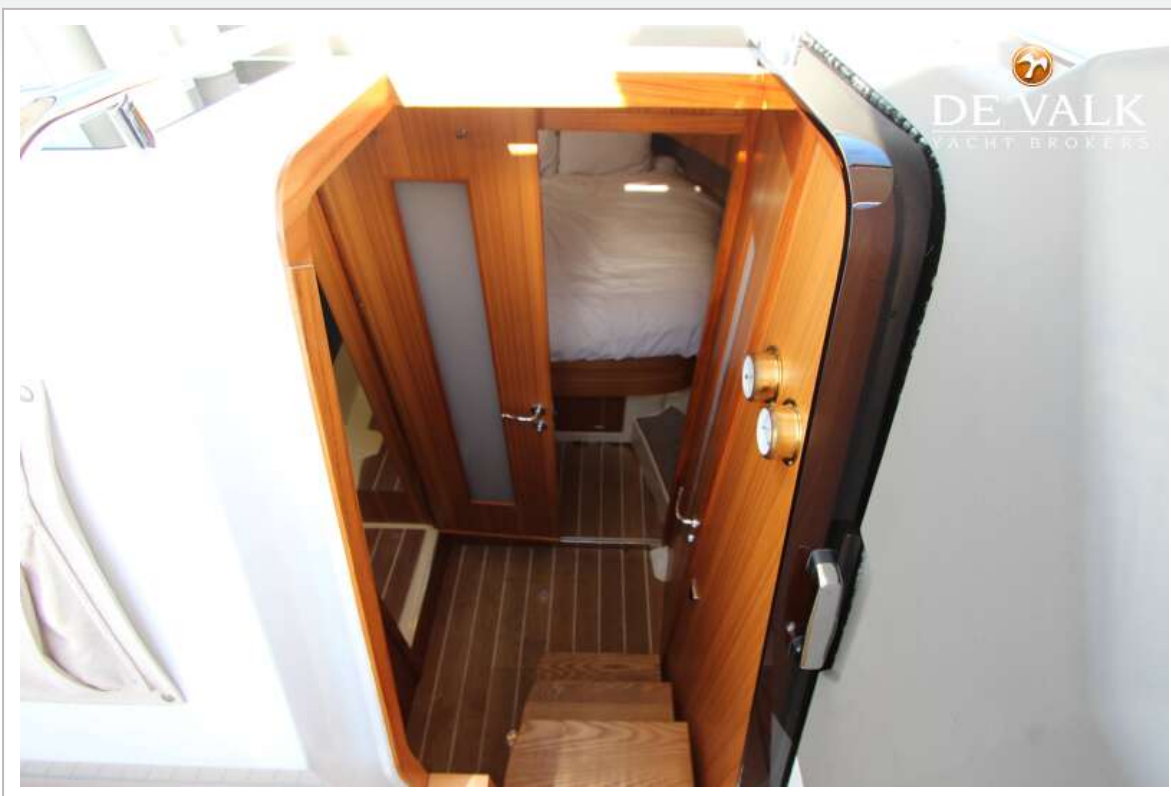




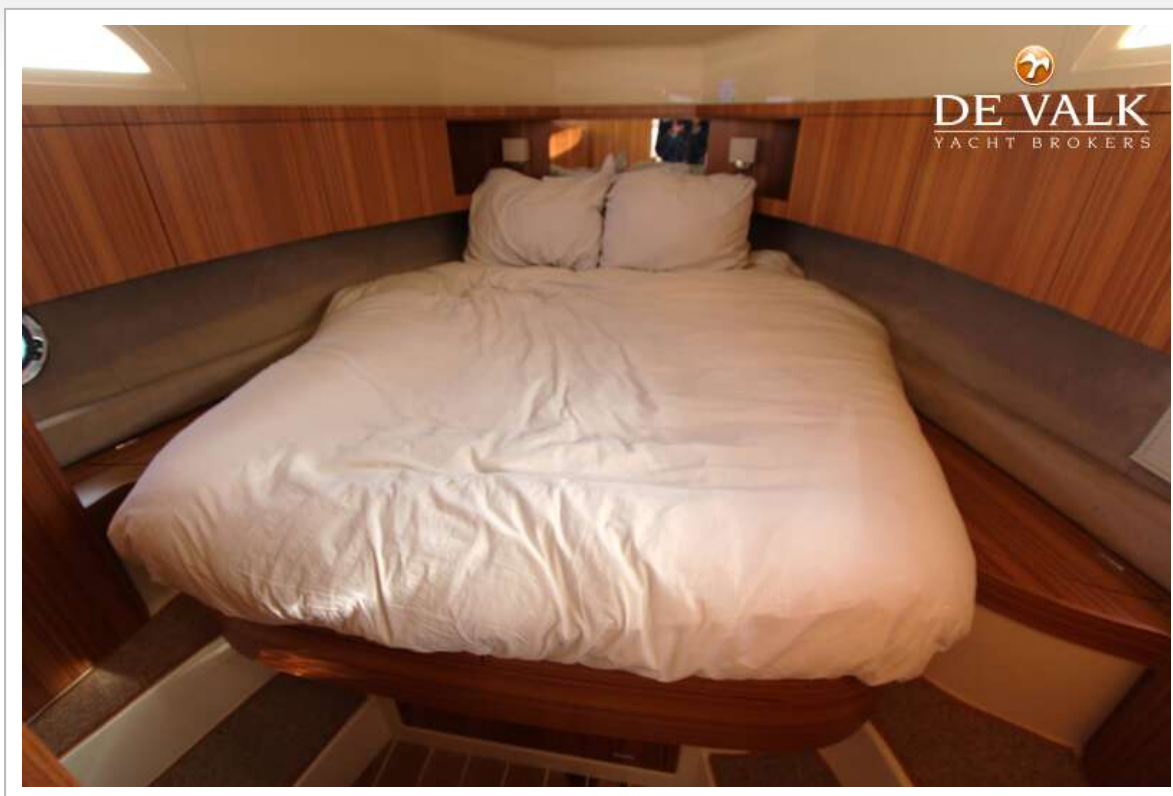
## MAREX 370 AFT CABIN CRUISER



## MAREX 370 AFT CABIN CRUISER

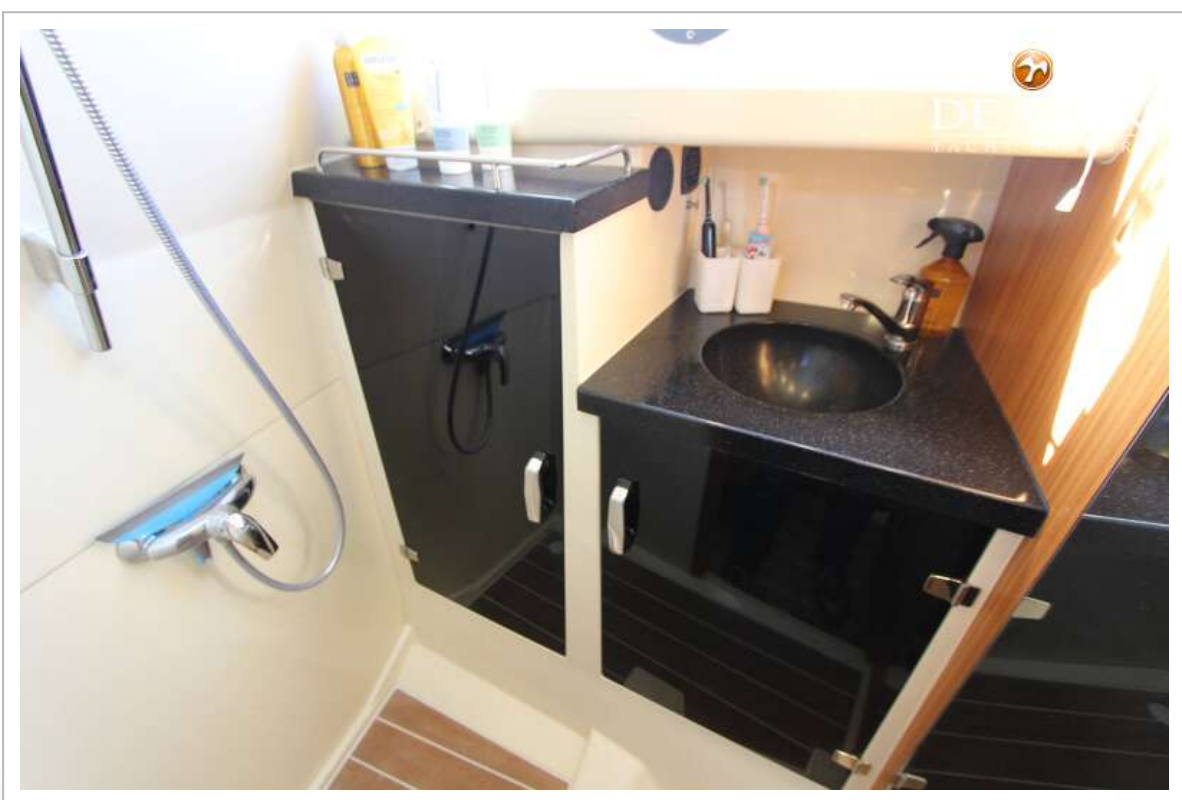
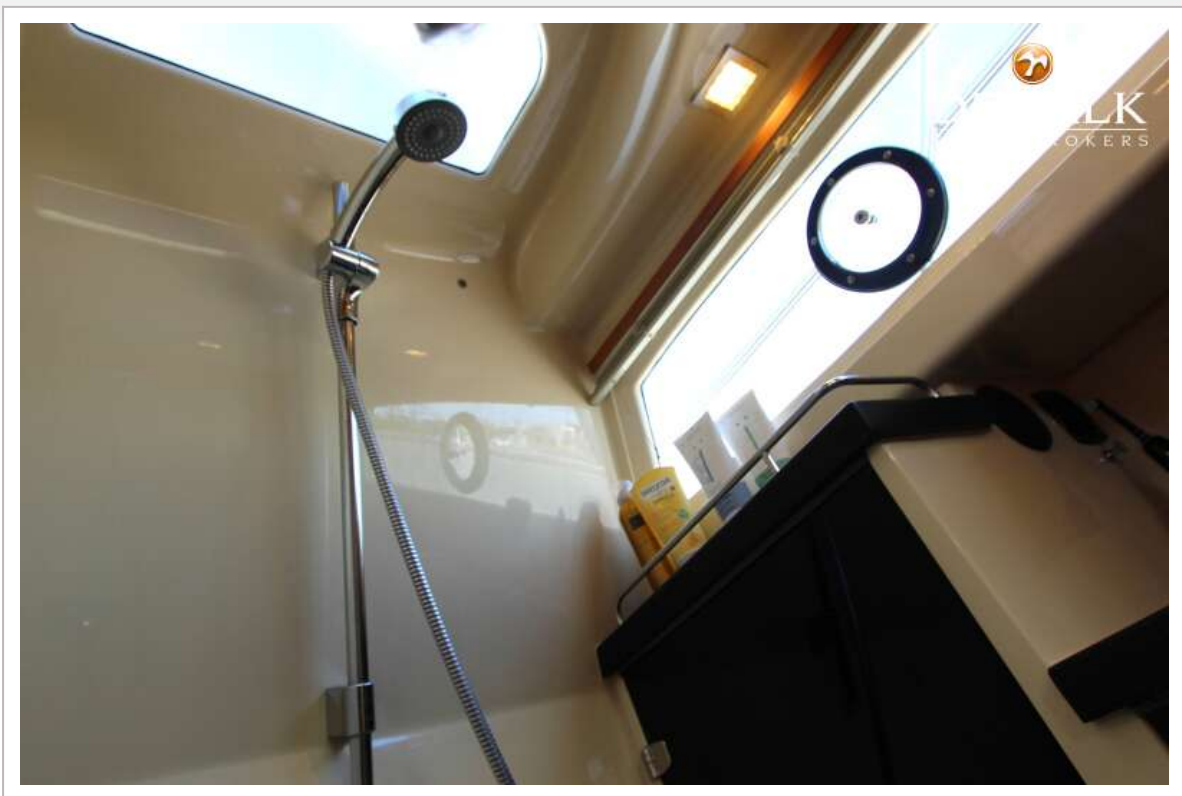


## MAREX 370 AFT CABIN CRUISER





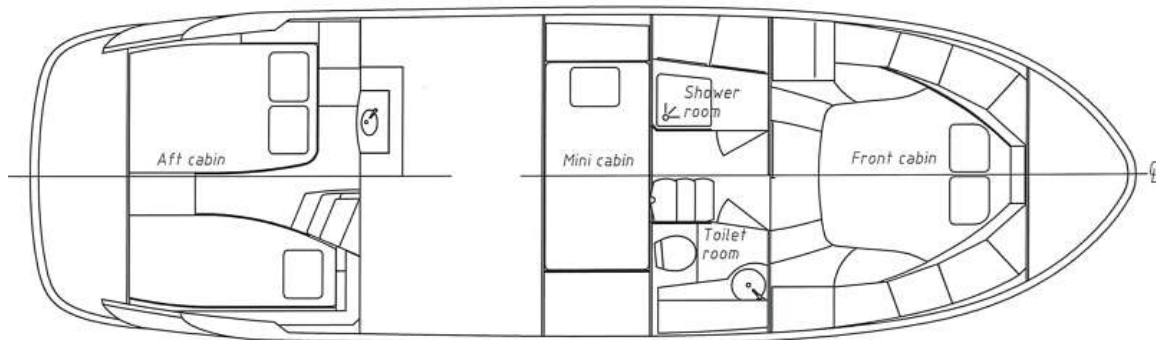
# MAREX 370 AFT CABIN CRUISER



# MAREX 370 AFT CABIN CRUISER



*Top view - interior layout*



*Top view - main deck*

