



DE VALK
YACHT BROKERS



STENTOR 1600 (STABILIZERS)



DE VALK
YACHT BROKERS

STENTOR 1600 (STABILIZERS)

BROKER'S COMMENTS

Stentor 1600 "Aristo" is designed by Vripack and launched at the Stentor shipyard in 2004. A real long range motor yacht (range approx 3750 nm @ 7.5 kn) with all the luxury for a comfortable time on board! Equipped with a 185 hp. Perkins diesel engine, hydraulic bow- & stern thruster, Kohler (11 Kva) generator & Vetus stabilizers. The double glazed windows, Kabola central heating, two cabins with both an ensuite bathroom makes a stay on board very comfortable. This Stentor is complete equipped, and ready to explore the world! Come and see her in our covered salesmarina in Sneek

Henk de Vries

SPECIFICATIONS

Dimensions	16.00 x 4.65 x 1.30 (m)	Builder	Stentor Yachts SRL
Built	2004	Cabins	2
Material	Steel	Berths	6
Engine(s)	1 x Perkins Sabre M185C diesel	Hp/Kw	185.00 (hp), 136.16 (kw)
Asking price	€ 395.000 (VAT Paid)	Lying	at sales office

CONTACT

Sales office	De Valk Sneek	Telephone	+31 (0)515 42 80 30
Address	Zwolsmanweg 7 8606 KC Sneek NL	E-mail	sneek@devalk.nl

DISCLAIMER

These particulars are given in good faith as supplied but cannot be guaranteed.



STENTOR 1600 (STABILIZERS)

GENERAL

Model	STENTOR 1600 (STABILIZERS)
Type	motor yacht
LOA (m)	16,00
LWL (m)	14,95
Beam (m)	4,65
Draft (m)	1,30
Air draft min (m)	3,25
Headroom (m)	2,00
Year built	2004
Launched	06-2004
Builder	Stentor Yachts SRL
Country	The Netherlands
Designer	Vripack Yacht Design Sneek
Displacement (t)	33
CE norm	A
Hull material	steel
Hull colour	off-white
Hull thickness (mm)	5
Hull shape	multi hard chine
Keel type	long keel
Superstructure material	steel
Superstructure (mm)	4
Deck plate thickness (mm)	4
Rubbing strake	stainless steel
Deck material	steel
Deck finish	non-skid paint
Superstructure deck finish	paint
Cockpit deck finish	teak
Dorades	yes
Window frame	aluminium



STENTOR 1600 (STABILIZERS)

Window material	double glazing Hora
Deckhatch	3x
Portholes	yes
Insulation	foam plates
Mast can be lowered	hydraulic
Fuel tank (litre)	steel 5.000 (2x 2.500ltr.)
Fuel tank 2 (litre)	yes
Level indicator (fuel tank)	VDO
Freshwater tank (litre)	stainless steel 2.500 (2x1.250ltr.)
Level indicator (freshwater)	VDO
Blackwater tank (litre)	stainless steel 325
Level indicator (blackwater)	VDO
Blackwater tank extraction	deck extraction + pump
Greywater tank (litre)	stainless steel 430
Level indicator (greywater)	VDO
Wheel steering	hydraulic
Inside helm position	yes
Outside helm position	hydraulic

ACCOMMODATION

Cabins	2
Berths	6
Interior	teak
Floor	teak and holly
Aft deck	yes
Saloon	yes
Headroom saloon (m)	2,0
Heating	central heating Kabola B12 Tap
Air-conditioning	single cycle airco The whole yacht
Dining room	yes
Dinette to convert into berth	yes



STENTOR 1600 (STABILIZERS)

Opening door to aft deck	yes
Galley	yes
Countertop	corian
Sink	stainless steel Double
Cooker	ceramic 4-burner Siemens
Extractor	Etna
Microwave/oven combi	Siemens Microwelle Plus
Fridge	Siemens
Freezer	Siemens
Hot water system	on central heating
Water pressure system	electrical
Dishwasher	Siemens
Owners cabin	French bed
Bed length (m)	2,0
Wardrobe	hanging/drawers/shelves
Bathroom	en suite
Toilet	en suite
Toilet system	electric
Wash basin	in the bathroom
Shower	en suite
Guest cabin 1	French bed
Bed length (m)	2,0
Wardrobe	hanging and drawers
Bathroom	en suite
Toilet	en suite
Toilet system	electric
Wash basin	in the bathroom
Shower	en suite
Washing machine/dryer combi	Miele SoftTronic WT946S
Central vacuum cleaner	yes
Wet bar	Sink and fridge on aftdeck.



STENTOR 1600 (STABILIZERS)

MACHINERY

No of engines	1
Make	Perkins Sabre
Type	M185C
HP	185
kW	136.16
Fuel	diesel
Maximum speed (kn)	8,5
Cruising speed (kn)	8
Consumption (l/hr)	10
Range (nm)	3750
Engine cooling system	freshwater heat exchanger
Drive	shaft
Shaft seal	yes
Engine controls	electrical ZF
Gearbox	hydraulic PRM Newage coventry with trollingvalve
Bowthruster	hydraulic Proportional with remote control
Sternthruster	hydraulic Proportional with remote control
Exhaust	watercooled
Thrust bearing	yes
Propeller type	yes
Propeller blades	5
Propeller shaft material	stainless steel
Shaft lubrication	water
Manual bilge pump	yes
Electric bilge pump	yes
Electrical installation	12V/24V/220V
Generator	silent separator Kohler 11kVa, 1.500rpm
Batteries	9x
Start battery	2x 180 Ah Mastervolt Gel
Service battery	6x 200 Ah Mastervolt Gel



STENTOR 1600 (STABILIZERS)

Generator battery	1x 80 Ah
Battery monitor	Mastervolt BTM-1 & Mastervolt charger control
Battery charger	Mastervolt Mass 24/100
Inverter	Mastervolt (2x) Mass Sine 24/2500
Shorepower	with cable
Insulation transformer	Mastervolt 4,5 kW with soft start.
Stabilizers	fin Vetus Roll Damping system
Extra info	Double separ filter

NAVIGATION

Navigation lights	yes
--------------------------	-----

EQUIPMENT

Fixed windscreen	yes
Sprayhood	yes
Cockpit cushions	yes
Cockpit table	yes
Cockpit chairs	yes
Bathing platform	Finished with teak
Boarding ladder	stainless steel
Gangway	Stainless steel and teak
Deck shower	Warm & cold
Anchor	Stainless steel
Anchor chain	100 m. stainless steel
Anchor 2	Stainles steel with rope
Windlass	Vetus hydraulic
Deck wash	yes
Davits	stainless steel
Davits controls	manual
Deck crane	hydraulic
Sea railing	stainless steel



STENTOR 1600 (STABILIZERS)

Grab rail (superstructure)	stainless steel
Railing side opening gates	3x
Wiper	6x
Horn	electric
Radar reflector	Serpe-lesm active reflector
Fenders	yes
Mooring lines	yes
TV	Samsung
TV receiver	M7
TracVision ball	Intellian
Radio-cd player	Pioneer
DVD player	Sony
Speakers in salon	yes
Fire extinguisher	yes
Extinguisher in engine room	yes



STENTOR 1600 (STABILIZERS)



STENTOR 1600 (STABILIZERS)



STENTOR 1600 (STABILIZERS)



STENTOR 1600 (STABILIZERS)



STENTOR 1600 (STABILIZERS)



STENTOR 1600 (STABILIZERS)



STENTOR 1600 (STABILIZERS)



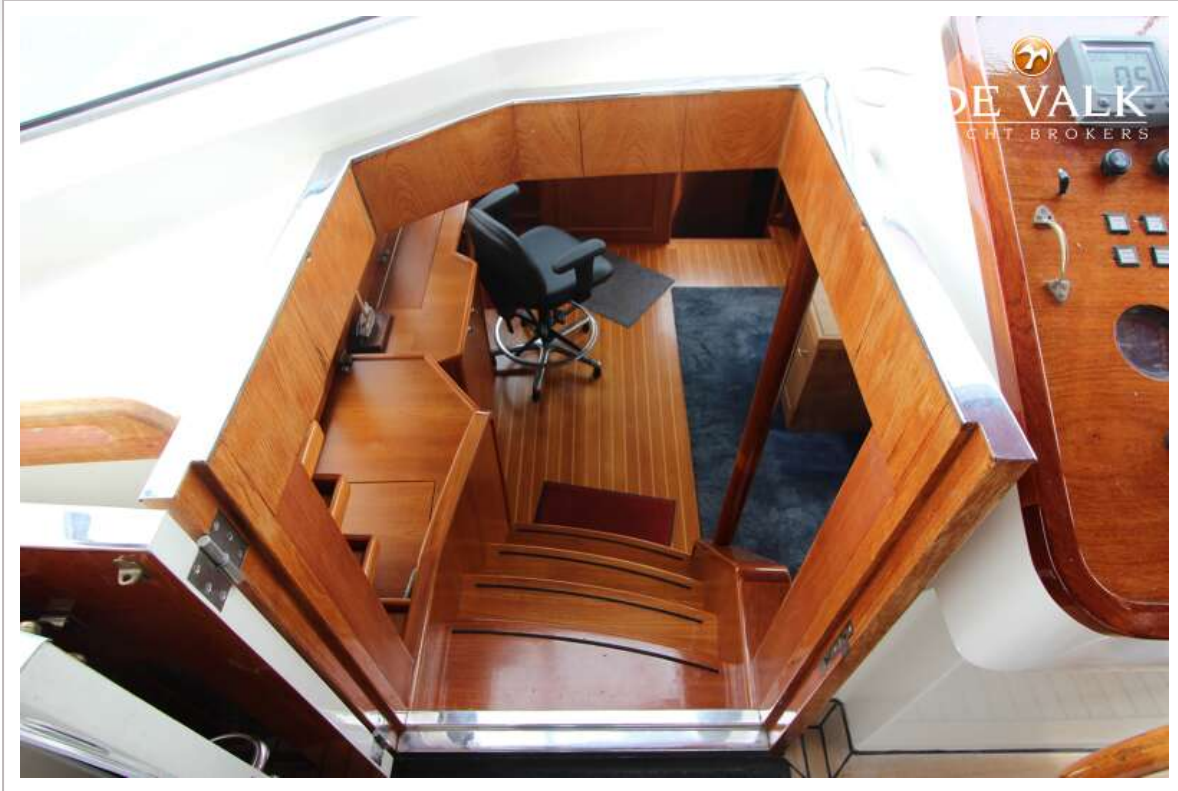
STENTOR 1600 (STABILIZERS)



STENTOR 1600 (STABILIZERS)



STENTOR 1600 (STABILIZERS)



STENTOR 1600 (STABILIZERS)



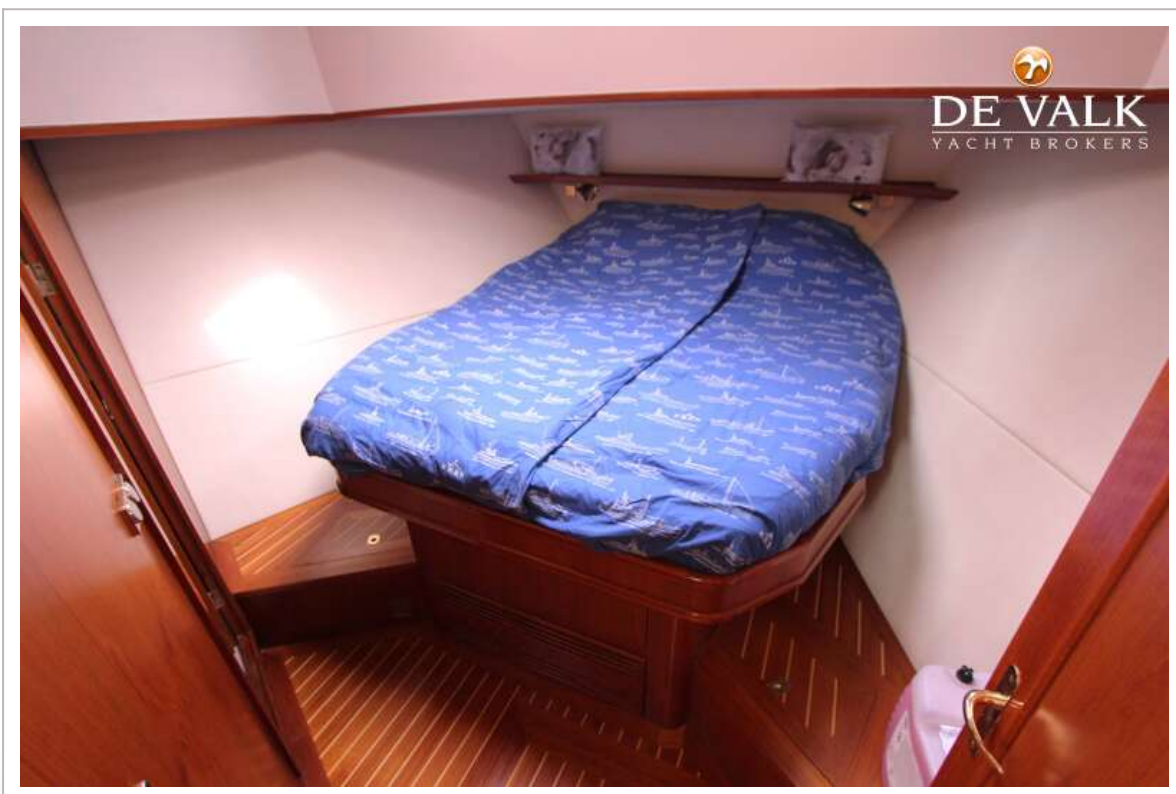
STENTOR 1600 (STABILIZERS)



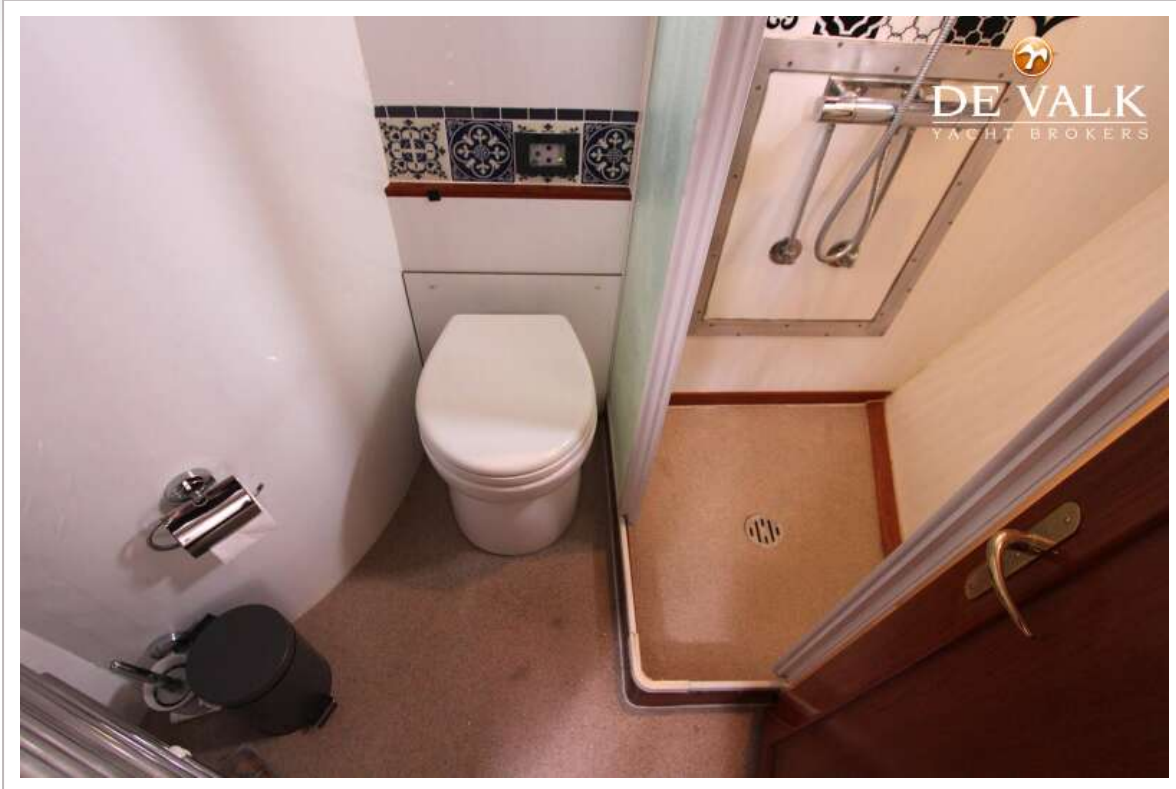
STENTOR 1600 (STABILIZERS)



STENTOR 1600 (STABILIZERS)



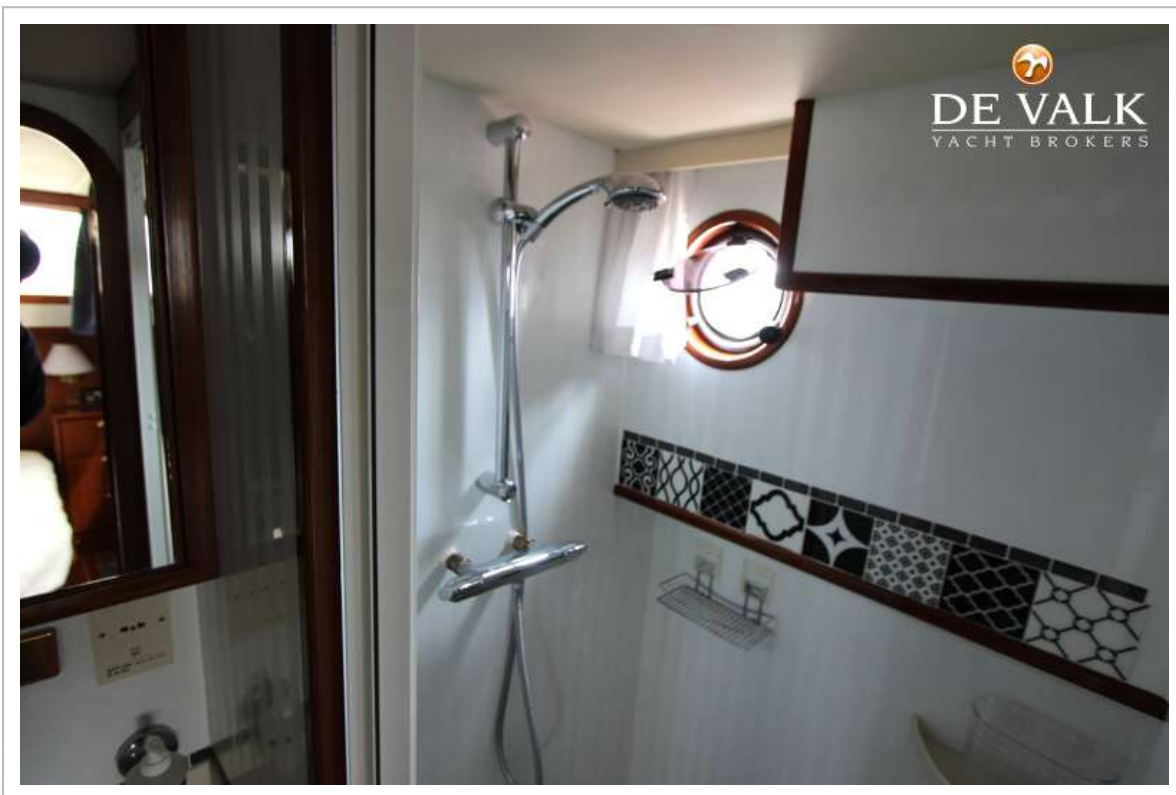
STENTOR 1600 (STABILIZERS)



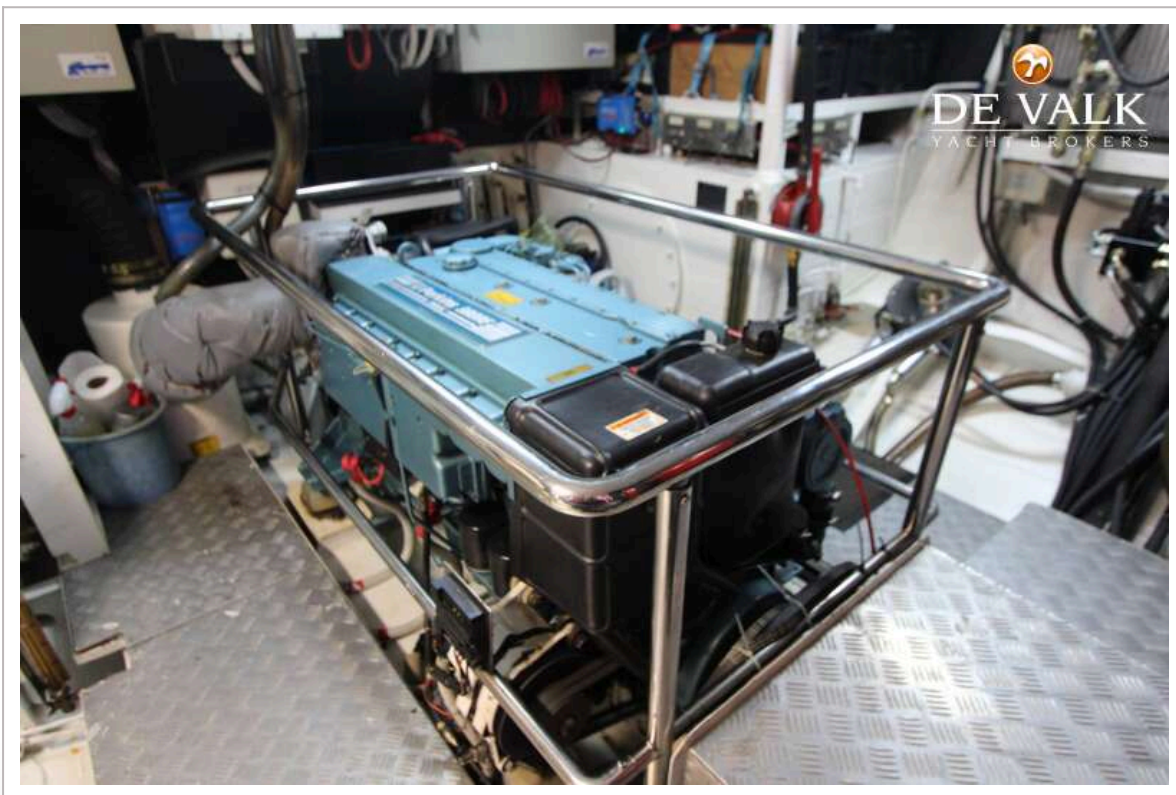
STENTOR 1600 (STABILIZERS)



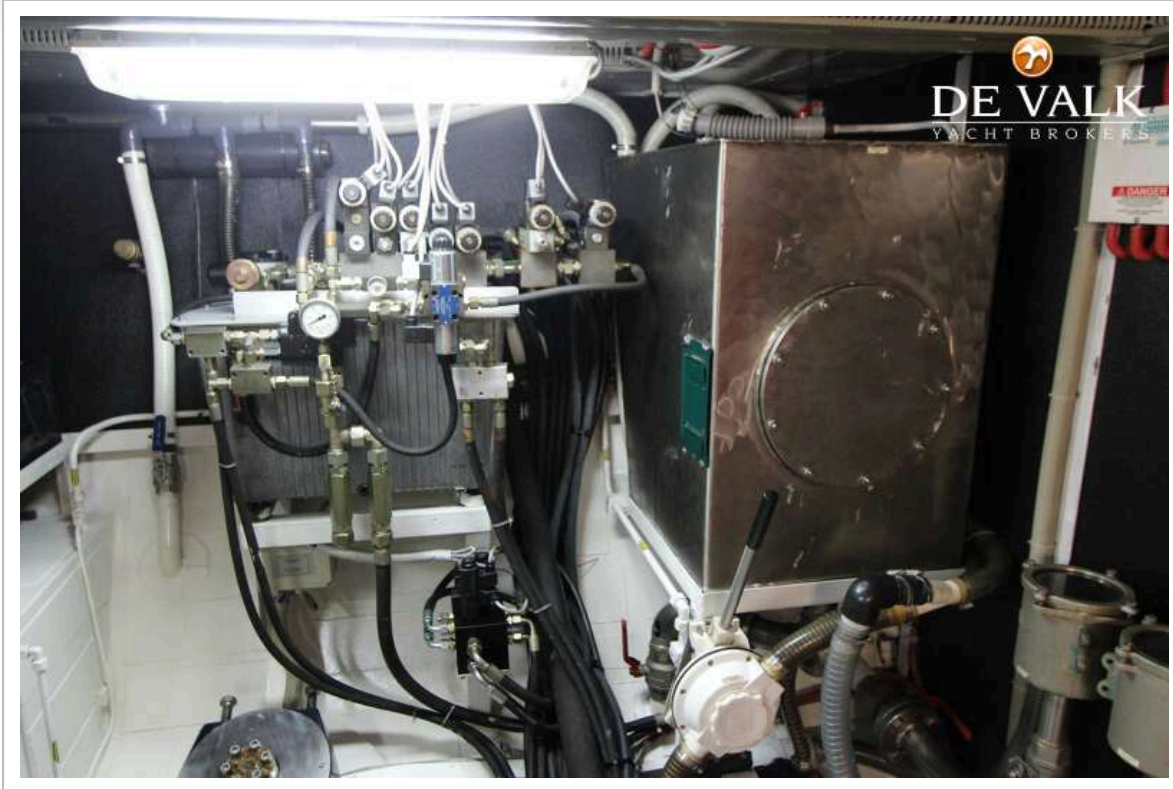
STENTOR 1600 (STABILIZERS)



STENTOR 1600 (STABILIZERS)



STENTOR 1600 (STABILIZERS)



STENTOR 1600 (STABILIZERS)

