



DE VALK

YACHT BROKERS



PHOTO SISTERSHIP

NIMBUS 365 COUPE



DE VALK  
YACHT BROKERS

# NIMBUS 365 COUPE

## BROKER'S COMMENTS

Meet the Nimbus 365 Coupé Mk2, the Scandinavian answer to doing everything, beautifully and uncomplicated and precision, safety, and understated elegance come standard. Every detail purposeful, everything built to last, reflecting Nimbus' uncompromising build philosophy. The Swiss Army knife family cruiser, commuter or long-range explorer. The single-engine setup delivers less fuel consumption, less complex and cost-effective maintenance. By choosing Nimbus you're joining an exclusive circle of owners who value intelligent design, real-world usability, and timeless Scandinavian craftsmanship.

*Marc Weijenberg*

## SPECIFICATIONS

|                     |                               |                |                          |
|---------------------|-------------------------------|----------------|--------------------------|
| <b>Dimensions</b>   | 11.56 x 3.45 x 1.14 (m)       | <b>Builder</b> | Nimbus Boat AB           |
| <b>Built</b>        | 2018                          | <b>Cabins</b>  | 2                        |
| <b>Material</b>     | GRP                           | <b>Berths</b>  | 6                        |
| <b>Engine(s)</b>    | 1 x Volvo Penta D6-435 diesel | <b>Hp/Kw</b>   | 435.00 (hp), 320.16 (kw) |
| <b>Asking price</b> | € 330.000 (VAT Paid)          | <b>Lying</b>   | contact sales office     |

## CONTACT

|                     |                                     |                  |                      |
|---------------------|-------------------------------------|------------------|----------------------|
| <b>Sales office</b> | De Valk Thuishaven                  | <b>Telephone</b> | +31 35 5829042       |
| <b>Address</b>      | Marinaweg 8<br>1361 AC Almere<br>NL | <b>E-mail</b>    | thuishaven@devalk.nl |

## DISCLAIMER

These particulars are given in good faith as supplied but cannot be guaranteed.



# NIMBUS 365 COUPE

## GENERAL

|                                    |  |
|------------------------------------|--|
| <b>Model</b>                       | NIMBUS 365 COUPE                             |
| <b>Type</b>                        | motor yacht                                  |
| <b>LOA (m)</b>                     | 11,56  |
| <b>Beam (m)</b>                    | 3,45   |
| <b>Draft (m)</b>                   | 1,14   |
| <b>Air draft (m)</b>               | 2,65   |
| <b>Air draft min (m)</b>           | 3,90   |
| <b>Headroom (m)</b>                | 1,90   |
| <b>Year built</b>                  | 2018   |
| <b>Builder</b>                     | Nimbus Boat AB                               |
| <b>Country</b>                     | Denmark                                      |
| <b>Designer</b>                    | Nimbus Boat AB                               |
| <b>Displacement (t)</b>            | 8,47   |
| <b>CE norm</b>                     | B  |
| <b>Hull material</b>               | GRP  |
| <b>Hull colour</b>                 | white  |
| <b>Hull shape</b>                  | deep-V                                       |
| <b>Superstructure material</b>     | GRP  |
| <b>Rubbing strake</b>              | rubber                                       |
| <b>Deck material</b>               | GRP  |
| <b>Deck finish</b>                 | teak   |
| <b>Cockpit deck finish</b>         | teak   |
| <b>Antifouling (year)</b>          | 2026   |
| <b>Window frame</b>                | aluminium                                    |
| <b>Window material</b>             | tempered glass                               |
| <b>Deckhatch</b>                   | aluminium / polycarbonate 1 x (flushmounted) |
| <b>Portholes</b>                   | aluminium                                    |
| <b>Mast can be lowered</b>         | manual                                       |
| <b>Fuel tank (litre)</b>           | stainless steel 700                          |
| <b>Level indicator (fuel tank)</b> | yes  |



# NIMBUS 365 COUPE

|                                     |   |
|-------------------------------------|---|
| <b>Freshwater tank (litre)</b>      | stainless steel 270   |
| <b>Level indicator (freshwater)</b> | yes   |
| <b>Blackwater tank (litre)</b>      | stainless steel 120   |
| <b>Level indicator (blackwater)</b> | yes   |
| <b>Blackwater tank extraction</b>   | deck extraction + pump  |
| <b>Wheel steering</b>               | hydraulic   |
| <b>Inside helm position</b>         | The helmseat is adjustable and swivels. It also has a bolster-seat and flips up for extra worktop space.  |
| <b>Emergency tiller</b>             | yes   |
| <b>More info on hull</b>            | Vacuum infusion GRP-Divinycell construction for added strength and insulation. The windows are laminated glass for extra strength and visibility.   |
| <b>Extra info</b>                   | A-symmetric decklayout with big sliding door next to the helmstation and wide, deep side decks on starboardside. The large sliding door offers outstanding visibility, ventilation and docking ergonomics. Sundeck forward with cushions. |
| <b>Extra info</b>                   | Headway mast up 3,90m, mast down 3,10m, mast removed 2,60m  |
| <b>Extra info</b>                   | Twin rudder setup for more efficient and precise steering at lower and higher speeds. Currently in winterstorage in Denmark.  |

## ACCOMMODATION

|                                      |   |
|--------------------------------------|---|
| <b>Cabins</b>                        | 2   |
| <b>Berths</b>                        | 6   |
| <b>Interior</b>                      | mahogany  |
| <b>Floor</b>                         | yes   |
| <b>Open cockpit</b>                  | yes   |
| <b>Pilot house/deck saloon</b>       | including U-shape dinette with "easy fold up-down buddy seat" |
| <b>Saloon</b>                        | with curtains and blinds for sunroof                          |
| <b>Headroom saloon (m)</b>           | 1,90  |
| <b>Sliding roof</b>                  | electric 2 x  |
| <b>Heating</b>                       | diesel ducted hot air Webasto                                 |
| <b>Dinette to convert into berth</b> | 1,95 x 1,00m (table in lower position and fill-in cushion)    |



# NIMBUS 365 COUPE

|                                |  |
|--------------------------------|--|
| <b>Sliding door to cockpit</b> | yes  |
| <b>Galley</b>                  | yes  |
| <b>Countertop</b>              | Corian   |
| <b>Sink</b>                    | stainless steel  |
| <b>Cooker</b>                  | calor gas Ceramic 2 burner   |
| <b>Oven</b>                    | calor gas Eno  |
| <b>Extractor</b>               | electric   |
| <b>Fridge</b>                  | Isotherm 85ltr (12v) frontloading and extra Isotherm drawer fridge (12v)   |
| <b>Hot water system</b>        | 220V + engine Boiler (20 ltr)  |
| <b>Water pressure system</b>   | electrical   |
| <b>Crockery</b>                | Nimbus glasses and dinnerware  |
| <b>Owners cabin</b>            | double bed   |
| <b>Bed length (m)</b>          | 2,00 x 1,70m, headroom 1,85m, extra top mattresses   |
| <b>Wardrobe</b>                | hanging/drawers/shelves  |
| <b>Bathroom</b>                | shared 1 (Jack&Jill access doors)  |
| <b>Toilet</b>                  | shared   |
| <b>Toilet system</b>           | electric   |
| <b>Wash basin</b>              | in the bathroom  |
| <b>Shower</b>                  | separate   |
| <b>Extra info</b>              | Ownercabin is fitted with generous storage and make-up drawer.   |
| <b>Guest cabin 1</b>           | double bed   |
| <b>Bed length (m)</b>          | 2,03 x 1,14m, headroom 1,80 mtr, extra top mattresses  |
| <b>Wardrobe</b>                | hanging and shelves  |
| <b>Extra info</b>              | The Pilothouse/Salon has excellent 360 degree visibility and plenty of light and ventilation (including side door and opening windows & sunroof). LED dimmable interior lights and decorative deck-lighting. |
| <b>Extra info</b>              | Covers for front window (blue)   |

## MACHINERY



# NIMBUS 365 COUPE

|                          |                                   |
|--------------------------|-----------------------------------|
| No of engines            | 1                                 |
| Make                     | Volvo Penta                       |
| Type                     | D6-435                            |
| HP                       | 435                               |
| kW                       | 320.16                            |
| Fuel                     | diesel                            |
| Year installed           | 2018                              |
| Maximum speed (kn)       | 26                                |
| Cruising speed (kn)      | 7                                 |
| Consumption (l/hr)       | 9                                 |
| Engine hours             | 540                               |
| Engine cooling system    | freshwater heat exchanger         |
| Drive                    | shaft                             |
| Engine controls          | electrical Volvo Penta EVC        |
| Gearbox                  | hydraulic ZF V-Drive              |
| Bowthruster              | electric (+ remote)               |
| Sternthruster            | electric                          |
| Exhaust                  | watercooled                       |
| Propeller type           | fixed                             |
| Propeller blades         | 4                                 |
| Propeller shaft material | stainless steel                   |
| Shaft lubrication        | water                             |
| Manual bilge pump        | 1 x                               |
| Electric bilge pump      | 1 x                               |
| Electrical installation  | 12v/220v                          |
| Start battery            | 1 x (2024)                        |
| Service battery          | (2021 + 2024)                     |
| Battery monitor          | yes                               |
| Battery charger          | yes                               |
| Shorepower               | with cable                        |
| Trimtabs                 | Volvo Penta                       |
| Extra info               | Soundproof box around the engine. |



# NIMBUS 365 COUPE

## NAVIGATION

|                     |               |
|---------------------|---------------|
| Compass             | yes           |
| Depth sounder       | Simrad (2018) |
| Log                 | Simrad (2018) |
| VHF                 | Simrad (2018) |
| GPS                 | Simrad (2018) |
| Plotter             | Simrad (2018) |
| Electronic chart(s) | Navionics     |
| AIS receiver        | Simrad (2018) |
| Navigation lights   | yes           |

## EQUIPMENT

|                            |   |
|----------------------------|---|
| Cockpit cover              | The fixed cockpitroof extends over the cockpit-area which adds more shade and easy setup for the cockpit cover. |
| Cockpit cushions           | cockpit seating with cushions   |
| Cockpit table              | yes   |
| Bathing platform           | with storage space  |
| Transom door               | yes   |
| Deck shower                | hot & cold  |
| Anchor                     | yes   |
| Windlass                   | electrical Lewmar 12v (with remote from helmstation)  |
| Windlass aft               | electrical (with remote)  |
| Sea railing                | stainless steel   |
| Grab rail (superstructure) | stainless steel   |
| Pulpit                     | stainless steel   |
| Life raft                  | container Plastimo  |
| Life raft (pers)           | 4   |
| Wiper                      | 2 x concealed with wash function  |
| Window ventilator          | Eberspaecher hot air blower   |
| Horn                       | yes   |
| Fenders                    | yes   |



# NIMBUS 365 COUPE

Mooring lines

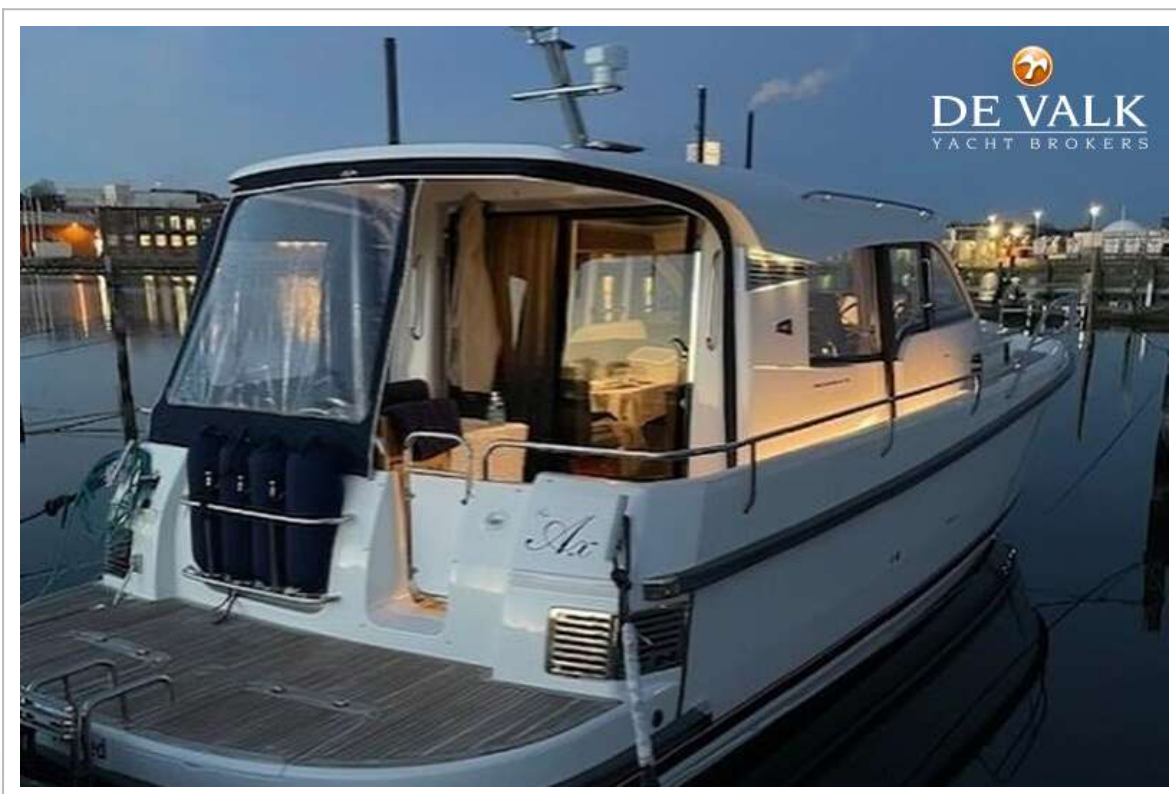
yes



# NIMBUS 365 COUPE



# NIMBUS 365 COUPE



# NIMBUS 365 COUPE



# NIMBUS 365 COUPE



# NIMBUS 365 COUPE



# NIMBUS 365 COUPE



# NIMBUS 365 COUPE





# DE VALK

YACHT BROKERS

SOON MORE PICTURES ON OUR WEBSITE  
BINNENKORT MEER FOTO'S OP ONZE WEBSITE  
BALD MEHR BILDER AUF UNSERE WEBSITE



# NIMBUS 365 COUPE



# NIMBUS 365 COUPE



# NIMBUS 365 COUPE



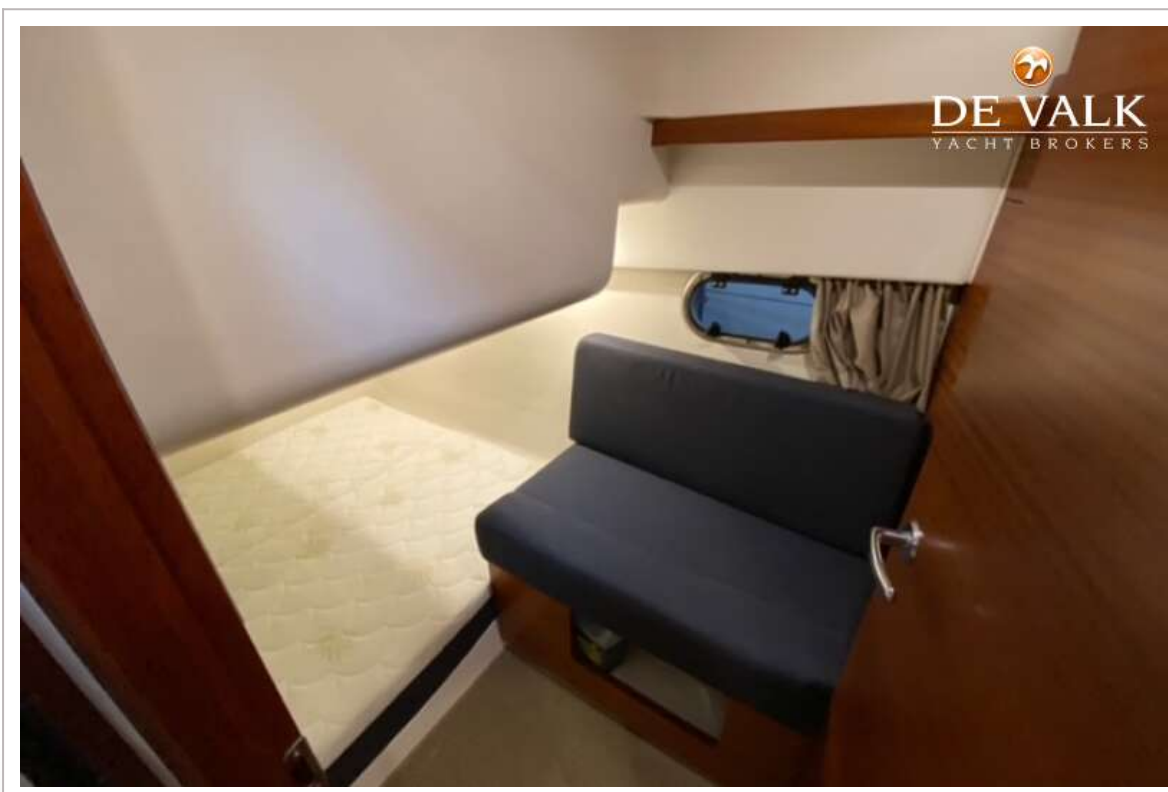
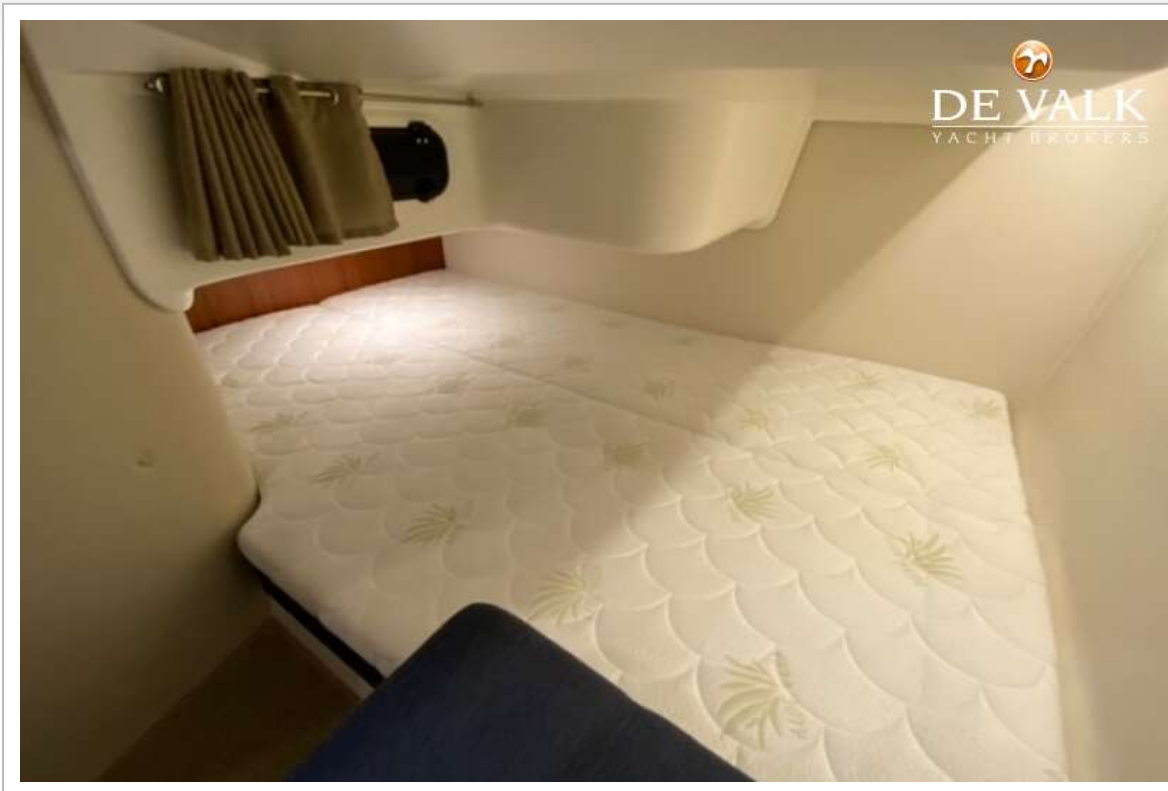
# NIMBUS 365 COUPE



# NIMBUS 365 COUPE



# NIMBUS 365 COUPE



# NIMBUS 365 COUPE



# NIMBUS 365 COUPE



# NIMBUS 365 COUPE



